

June 2015

Staley State-Williams Federal Remediation Plan



View south-southwest from Williams A Federal #5 production pad to stockpiled, chloride-impacted soil at release site.

**Prepared For:
LRE Operating LLC.**

**Prepared by
R.T. Hicks Consultants, Ltd.
Albuquerque, New Mexico**

Description of Release

The release occurred on the Federal lease associated with the Williams A Federal wells #5 and #10. On May 5, 2015 a 10-inch transfer line moving treated waters from the NW State 19 Recycling Containment to the Staley State No.20 well ruptured and released about 65 barrels of treated produced water. Plate 1 shows the release area relative to nearby wells and Plate 2 shows the topography of this same area. The pad of the Williams A Federal wells is less than 100 feet north of the release location. The release area is located in Unit M Sec. 29, T17S-R28E. Appendix A is the initial notification report (C-141).

Service work was being performed on the Staley State #20 at the time of the release, located south of the release site. A valve on the transfer line vibrated shut, maximum operating pressure for the 10-inch line was exceeded, and the line ruptured. As Blue Water Transfer Personnel were at the site monitoring the water transfer; the transfer line was immediately shut-in, a vacuum truck was brought to the location, standing water in the transfer line was removed, and free fluids were recovered from the impacted area.

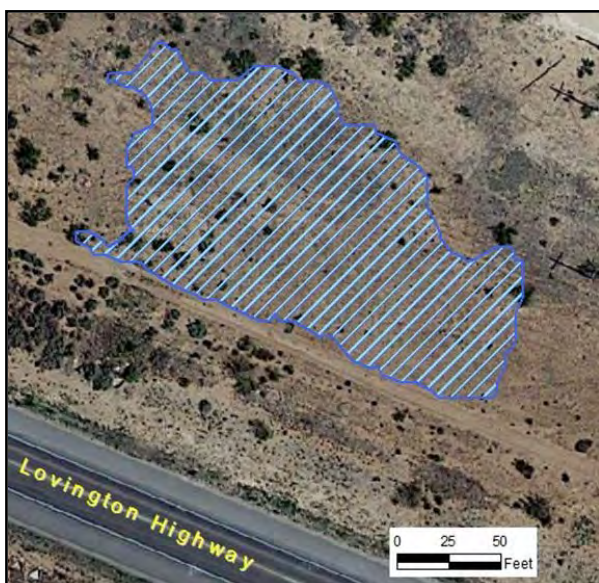


Figure 1: Cross hatched area is the release area.
North is up the page.

Of the release volume (65 bbls) and estimated 5-10 bbls was recovered. Produced water pumped from the NW State 19 Recycling Containment had been treated to remove hydrocarbons and consisted only of brine water. The impacted area was pasture land next to the transfer line. The impacted area measures 195 feet by 108 feet. Figure 1 shows the area of impact. The southwest corner of the Williams A #5 production pad is in the northeast corner of the image.

Characterization of Impacted Area

On May 15, 2015, Hicks Consultants collected soil samples from the release area. Locations are shown on Figure 2. The area was divided into six grid sections with each having dimensions of about 65 feet by 36 feet. Utilizing a backhoe, soil samples were collected from trenches configured in a five (5) spot pattern within each grid section. The samples were collected from the surface to 4-feet below ground surface (bgs). Soil samples were transported to Cardinal Laboratories located in Hobbs, New Mexico for analysis.

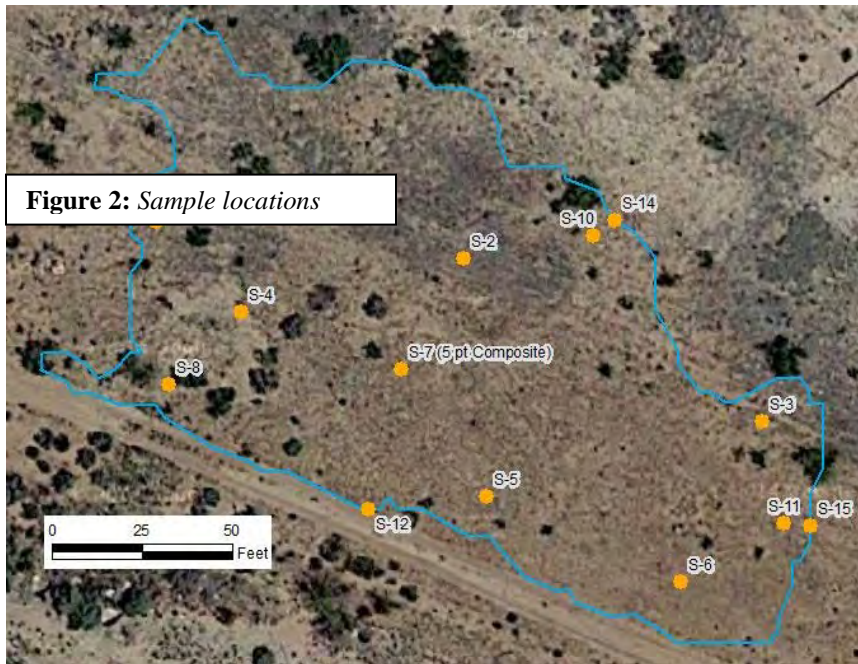


Figure 2: Sample locations

Table 1 presents Lab results for samples collected on May 15, 2015. Analytical results demonstrate that the chloride impact from the release to be less than 1-foot bgs in the majority of the impacted area. Greatest depth of impact was observed at sample location S-2.

Soil samples were analyzed for BTEX in sample location S-1 and

S-2 (1-foot depth). As shown in the laboratory reports and the table below, BTEX components were not detected.

Table 1: Laboratory results from the six trench sample locations.

Sample Location and Depth	Chloride	BTEX	Sample Location and Depth	Chloride	BTEX	Sample Location and Depth	Chloride
	mg/kg			mg/kg			mg/kg
S-1, 0.0'	12900		S-2, 0.0'	26400		S-3, 0.0'	15200
S-1, 0.5'	4280		S-2, 0.5'	4960		S-3, 0.5'	2200
S-1, 1.0'	496	<0.300	S-2, 1.0'	3920	<0.300	S-3, 1.0'	736
S-1, 2.0'	960		S-2, 2.0'	144		S-3, 2.0'	160
S-1, 3.0'	128		S-2, 3.0'	144		S-3, 3.0'	112
S-1, 4.0'	48		S-2, 4.0'	96		S-3, 4.0'	80
S-4, 0.0'	15600		S-5, 0.0'	18800		S-6, 0.0'	16600
S-4, 0.5'	64		S-5, 0.5'	272		S-6, 0.5'	
S-4, 1.0'	112		S-5, 1.0'	672		S-6, 1.0'	160
S-4, 2.0'	80		S-5, 2.0'	48		S-6, 2.0'	128
S-4, 3.0'	64		S-5, 3.0'	80		S-6, 3.0'	112
S-4, 4.0'	48		S-5, 4.0'	80		S-6, 4.0'	128
Background	<16.0						

Table 2 presents laboratory results from five-point composite samples taken from the walls and floor of the excavated release area. After initial excavation, chloride concentrations of the samples from the west, north, and east walls of the excavated area exceeded 7000 mg/kg (results in Appendix A). The excavation footprint was extended approximately five-feet further in each of these directions. After the additional excavation, no wall concentration exceeded 225 mg/kg.

The laboratory concentration for the composite sample taken from the excavated material (stockpiled soil) was 2720 mg/kg (Table 2).

Table 2: *Laboratory results from the wall and floor of the excavation and from the excavated material.*

Sample Location (all samples are 5-point composites)	Chloride in mg/kg			
	Sample Location	May 26	Sample Location	May 29
West Wall	S-9	11600	S-13	48
North Wall	S-10	7040	S-14	64
East Wall	S-11	8800	S-15	224
South wall	S-12	48		
Excavation Floor	S-8	480		
Stockpiled Material	S-7	2720		

Environmental Setting

Geology

The Staley State 20 release site is located in the Great Plains physiographic province. The Plains are considered a Cenozoic depositional feature composed of erosional materials from the eastern front of the Rocky Mountains and similarly aligned Basin and Range mountain chains further to the south. Cenozoic erosional materials (Quaternary alluvium and piedmont deposits) are unconformably deposited on top of the Permian Salado Formation (Psl on Plate 3) and the Permian Rustler Formation (Pr) near the release location (Plate 3).

Much of the Plains material that comprises the surface was deposited between 40 and 50 million years ago (ma). With some uplift of the Plains, depositional rates slowed or stopped from 30 to 40 ma. Beginning 30 ma, additional deposition spreading from the north to the south and reworking of the earlier materials resulted in the deposition of the Ogallala formation. The later formation of the Pecos Valley by headward erosion due to either uplift to the west or solution/subsidence of the valley resulted in partial stripping of material from the fronts of the mountains (Reeves, 1972). This action has left the Great Plains isolated from the mountain fronts.

The release location is between the Mescalero rim (the western edge of the Ogallala formation) and the Pecos River. The above mentioned development of the Pecos Drainage removed and reworked the remnants of the Ogallala formation between the Mescalero rim and the Pecos River. This surface is called the Mescalero Plain and is composed of relatively thin pediment deposits and alluvium of fluvial and eolian origins deposited on top of the older Triassic and Permian formations.

As shown on Plate 3, the release location is in the eastern edge of an area mapped as Salado. As the Salado is not considered a potable aquifer, the location of two wells (Misc-60 and Misc-59) about 1.5 miles south of the release location suggests that bedrock in that area is probably

lower Rustler Formation. As the Salado is not considered a potable aquifer, the location of two wells (Misc-60 and Misc-59) about 1.5 miles south of the release location suggests that bedrock in that area is probably lower Rustler Formation. deposit of newer materials. To the north and northeast this alluvium overlies the Rustler Formation (Pr).

At the release site, our foot survey did not identify any exposed bedrock that would permit a determination if the mapped Older Alluvium to the east overlies the upper Salado or lower Rustler.

Hydrology

Neither the Salado nor the lower Rustler are considered potable aquifers due to the presence of abundant evaporates in these rock units. Plate 3 shows that the distribution of wells in the area does not include wells on the Salado exposure. Water supply wells are present on exposures of the middle/lower Rustler (e.g. Misc-17, USGS 1393 and probably Misc 60 and Misc 59). Exposures of the Artesia Group (Pat) to the west of the site also show water supply wells on this surface (e.g. Misc 21 and USGS 1520). We cannot verify the location of nearby wells shown on the OSE database. We were unable to find any evidence of well RA-4554 located about 3 miles northwest of the release site. Well L-1370 is a Lea County well that the database plots in the southwest corner of Plate 3.

Plate 4 shows the elevation of the top of groundwater. At the release site, the depth to groundwater is calculated as follows:

Surface Elevation – Groundwater Elevation = Depth to Groundwater

The surveyed ground surface elevation of the nearby Williams A Federal #10 is 3645 and the groundwater elevation in the area of the release is about 3350 feet asl. Thus, the depth to groundwater is about 295 feet. If the Salado Formation is close to the thickness of 575 feet described for the Loco Hills area in the New Mexico Bureau of Mines and Mineral Resources Open File Report 67¹, then any groundwater beneath the release site will probably be brine. More than likely, the thickness of the Salado is less than 575 feet due to solution and removal of the salt. Nevertheless, we believe any groundwater in the Salado would not be fresh.

With respect to surface water, Plate 5 shows the nearby intermittent streams mapped by the USGS. The nearest mapped arroyo is about 1 mile north. Our foot survey of the area identified no watercourses within several hundred feet. While we witnessed some erosion channels north of the Williams A #5 & #10 pad that appeared to be associated with oilfield activity (roads and pipelines), these features were not present downhill where the topographic gradient flattened.

Other Environmental Characteristics

- The release site location is in the southwestern quarter of Section 29 on a relatively flat area that drains to the northwest.

¹ https://geoinfo.nmt.edu/publications/openfile/downloads/0-99/67/ofr_67.pdf

- The nearest surface body of water is an intermittent “Freshwater Pond” about 1.15 miles southeast of the release location. See Plate 4. These “pond” features are playas that have developed within the alluvium overlaying the Permian Salado and Rustler Formations (see Plate 5).
- Wetlands are mapped in the area (Plate 6) but the closest wetland is a freshwater pond about 1 mile southeast
- Plate 7 is a map of karst potential for the area around the release site. The surrounding area is mapped as having either “high potential” or “medium” potential”. The boundaries are generalized as is obvious from the straight line character of the contact between the two regions. Comparison with Plate 1 explains that the area of “high potential” karst is an approximation of the contact between the Permian Salado formation and the Quaternary alluvium.
- Our foot survey of the area and the trench sampling identified no evidence of unstable ground.
- We found no evidence that suggests the area is subject to a 100-year flood. FEMA mapping of the area confirms this observation (Plate .
- As Plate 1 and the site visit demonstrate that
 - there are no residences near the release site
 - the site does not lie within a municipal boundary. Artesia is about 10 miles west-northwest.
 - The closest mines are caliche pits and subsurface mines are absent in this area

Remediation Plan

The first phase of the surface remedy is complete:

- Impacted material in the release area has been excavated and stockpiled.
- Sampling demonstrates that the remaining soil is less than 600 mg/kg chloride

The remediation plan is attached as Contractor Instructions. A closure report with a final C-141 form will be submitted for the Staley State 20 release after implementation of the plan to the satisfaction of BLM and OCD. Please contact me or Mike Stubblefield if further information is required.

References

Reeves, C.C., Jr., 1972, Tertiary-Quaternary Stratigraphy and Geomorphology of West Texas and Southeastern New Mexico, In Guidebook, East-Central New Mexico, ed. V.C. Kelley and F. D. Trauger, 103-17, New Mexico Geological Society 23

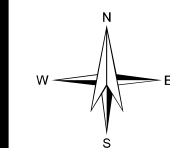
Contractor Instructions – Lime Rock Staley 20 Release

1. Excavate a trench with dimensions of 30 feet wide by 80 feet long by 11 feet deep on the north side of the production pad shared by the Williams A Federal #5 and Williams A Federal #10 wells (see Plate 9).. This trench area will be staked by Lime Rock or their representatives with the selected contractor on site.
2. Lime Rock or their representative will inspect the bottom and walls of the trench for subsidence features or evidence of instability. Any features that suggest unstable ground will be reported to BLM and, if necessary, the project will halt to enable the design and implementation of appropriate measures. A sampling trench at the nearby release showed no features of instability, solution cavities, etc.
3. The impacted (stockpiled) material will be placed into the trench such that all material will be at least 4-feet below ground surface
4. Clean fill material will be used to backfill the trench and capped by compacted caliche to restore the production pad surface. The total thickness of the soil cover will be greater than 4 feet.
5. The excavated area will be graded to match with the surrounding terrain.
6. The graded release footprint will be reseeded using the BLM approved seed mixture for the area.
7. The burial of the impacted soil will be noted in the BLM and OCD files by appropriate forms (e.g. C-141 for the OCD file) associated with the Williams A Federal #5 *and* #10 wells, which is on the same lease as the release site.
8. A surface marker will also identify the burial trench to allow for appropriate reclamation of the surface when the last of the two wells are plugged and abandoned.
9. Excess soil generated by the burial trench excavation will be added to the soil stockpile on the north side of the Williams A production pad.

Plates

R.T. Hicks Consultants, Ltd.

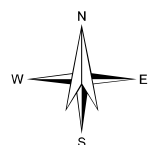
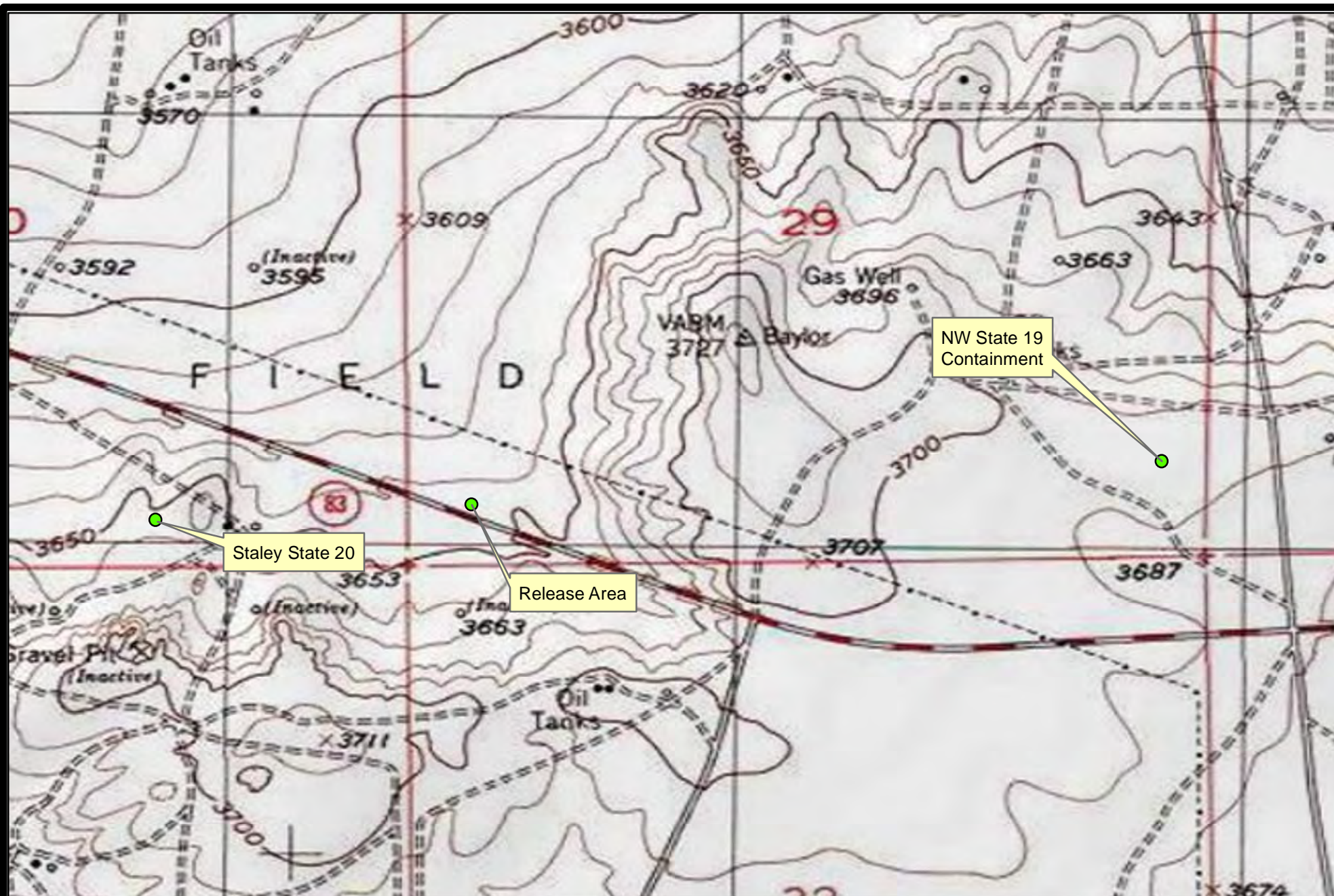
901 Rio Grande Blvd. NW, Suite F-142
Albuquerque, NM 87104



R.T. Hicks Consultants, Ltd
901 Rio Grande Blvd NW Suite F-142
Albuquerque, NM 87104
Ph: 505.266.5004

Location Map
Lime Rock Resources Staley State 20

Plate 1
July 2015



0 1,000
Feet

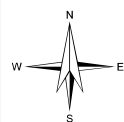
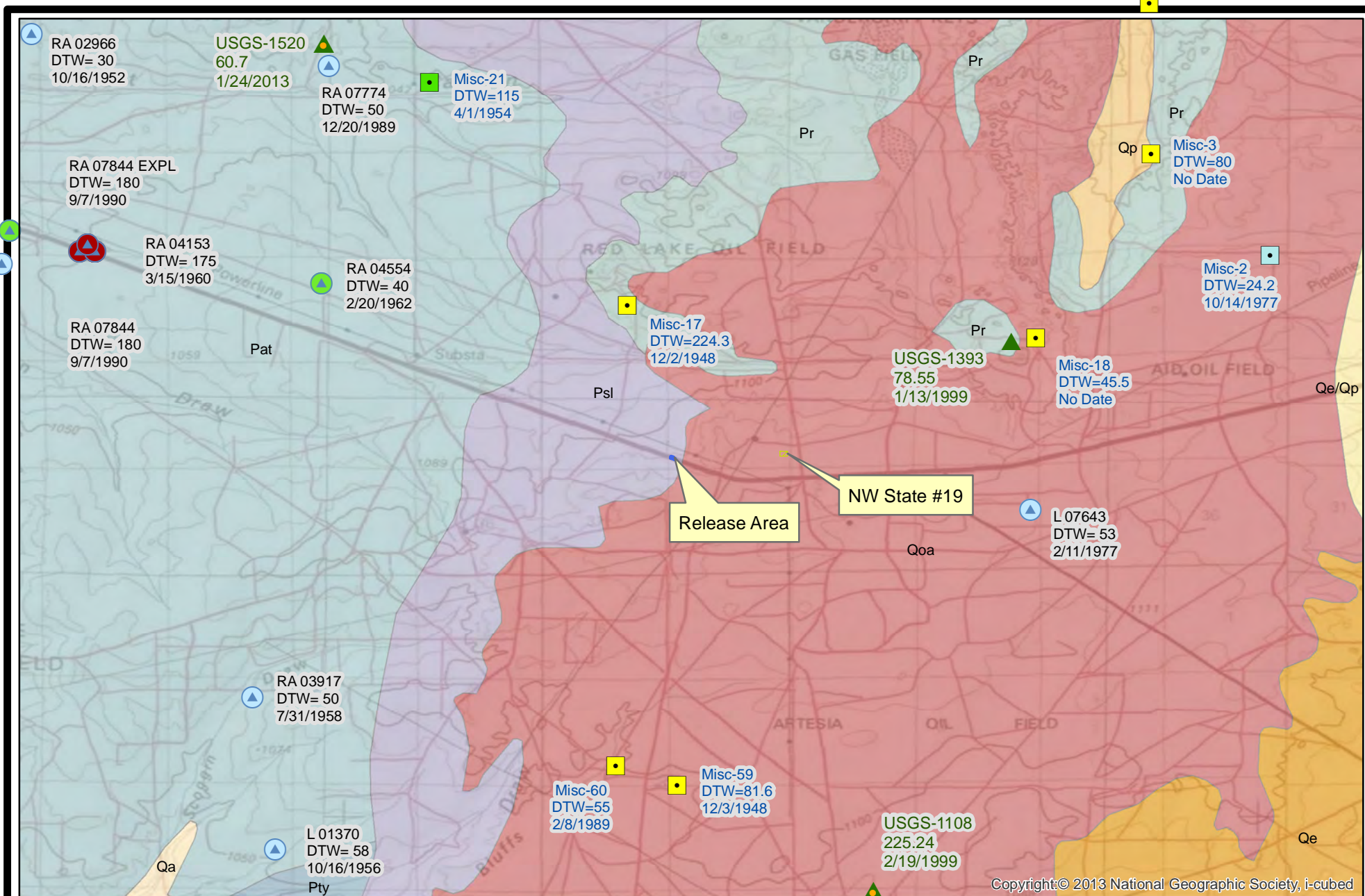
R.T. Hicks Consultants, Ltd
901 Rio Grande Blvd NW Suite F-142
Albuquerque, NM 87104
Ph: 505.266.5004

Topographic Map

Plate 2

Lime Rock Resources
Staley State 20

July 2015



0 1 2
Miles

R.T. Hicks Consultants, Ltd
901 Rio Grande Blvd NW Suite F-142
Albuquerque, NM 87104
Ph: 505.266.5004



Depth To Water and Geology

Lime Rock Resources
Staley State 20




Plate 3

June 2015

Legend**USGS Gauging Station (DTW, Date)****Aquifer Code, Well Status**

-  Alluvium/Bolsom
-  Artesia Group








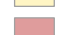
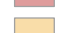
Misc. Water Wells (Well ID, DTW)**Well Depth (ft)**

-  No Data
-  <=150
-  151 - 350

OSE Water Wells**Well Depth (ft)**

-  <= 150
-  151 - 350
-  501 - 1000
-  > 1000

NM Geology**Map Unit, Description**

-  Pat, Permian-Artesia Group; shelf facies forming south-southeast trending outcrop
-  Pr, Paleozoic-Ruster Formation; siltstone, gypsum, sandstone, and dolomite; Upper Permian
-  Psl, Paleozoic-Salado Formation; evaporite sequence; Upper Permian
-  Pty, Paleozoic-Yates and Tansill Formations; sandstones, siltstones, limestone, dolomite, and anhydrite
-  Qa, Quaternary Alluvium
-  Qe, Quaternary-Eolian Deposits
-  Qe/Qp, Quaternary-Eolian Piedmont Deposits
-  Qoa, Quaternary-Older Alluvial Deposits
-  Qp, Quaternary-Piedmont Alluvial Deposits

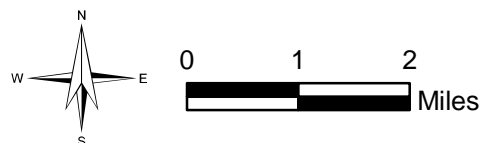
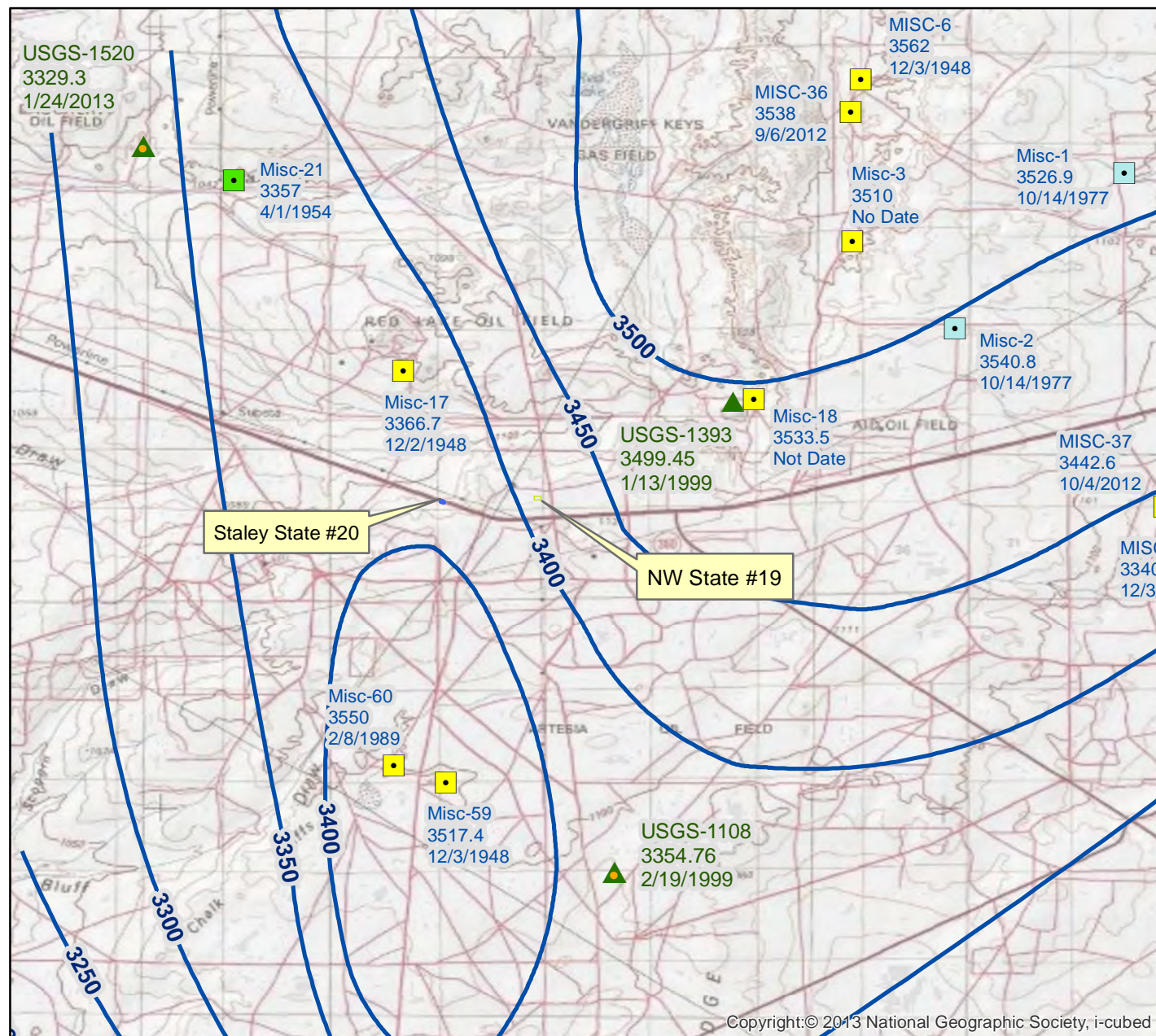
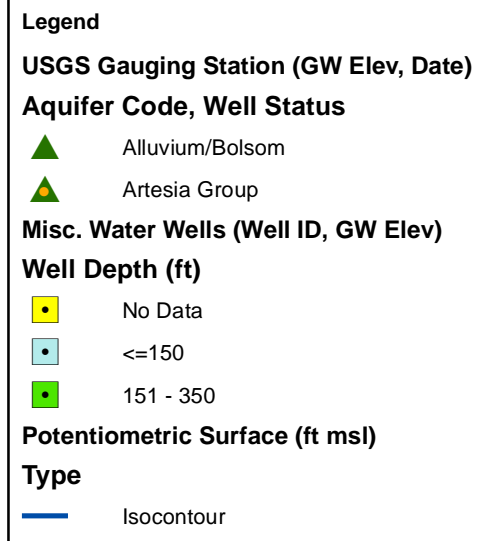
R.T. Hicks Consultants, Ltd
 901 Rio Grande Blvd NW Suite F-142
 Albuquerque, NM 87104
 Ph: 505.266.5004

Legend - Depth To Water and Geology

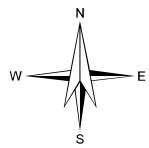
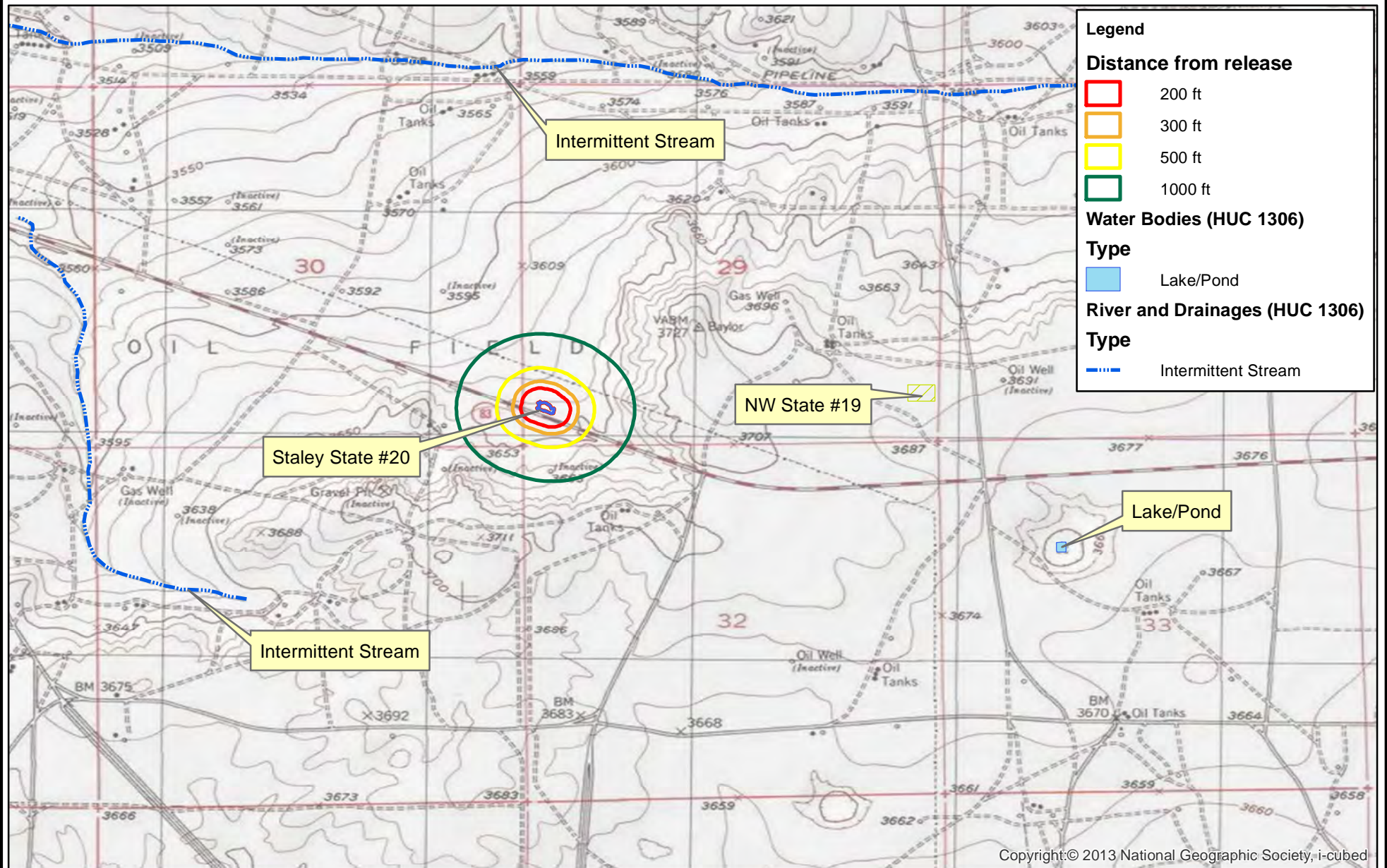
Lime Rock Resources
 Stately State 20

Plate 3
 Legend

June 2015



R.T. Hicks Consultants, Ltd 901 Rio Grande Blvd NW Suite F-142 Albuquerque, NM 87104 Ph: 505.266.5004	Potentiometric Surface and Groundwater Elevation at Nearby Water Wells Lime Rock Resources Staley State 20	Plate 4 June 2015
--	---	--------------------------



0 1,000 2,000
Feet

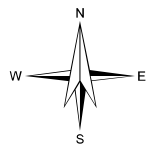
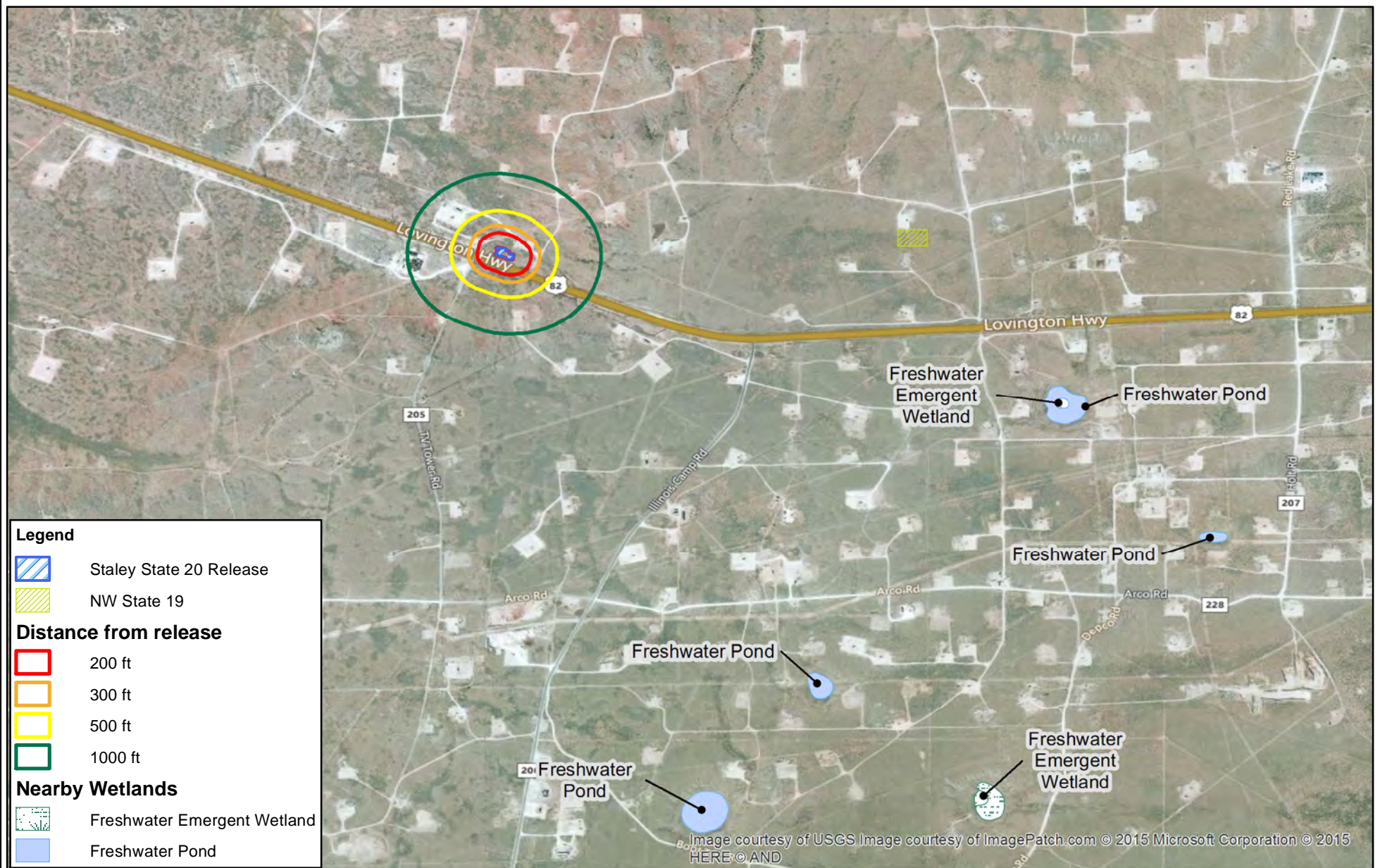
R.T. Hicks Consultants, Ltd
901 Rio Grande Blvd NW Suite F-142
Albuquerque, NM 87104
Ph: 505.266.5004

Surface Water and Topography

Lime Rock Resources
Staley State 20

Plate 5

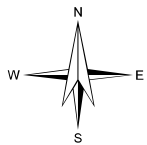
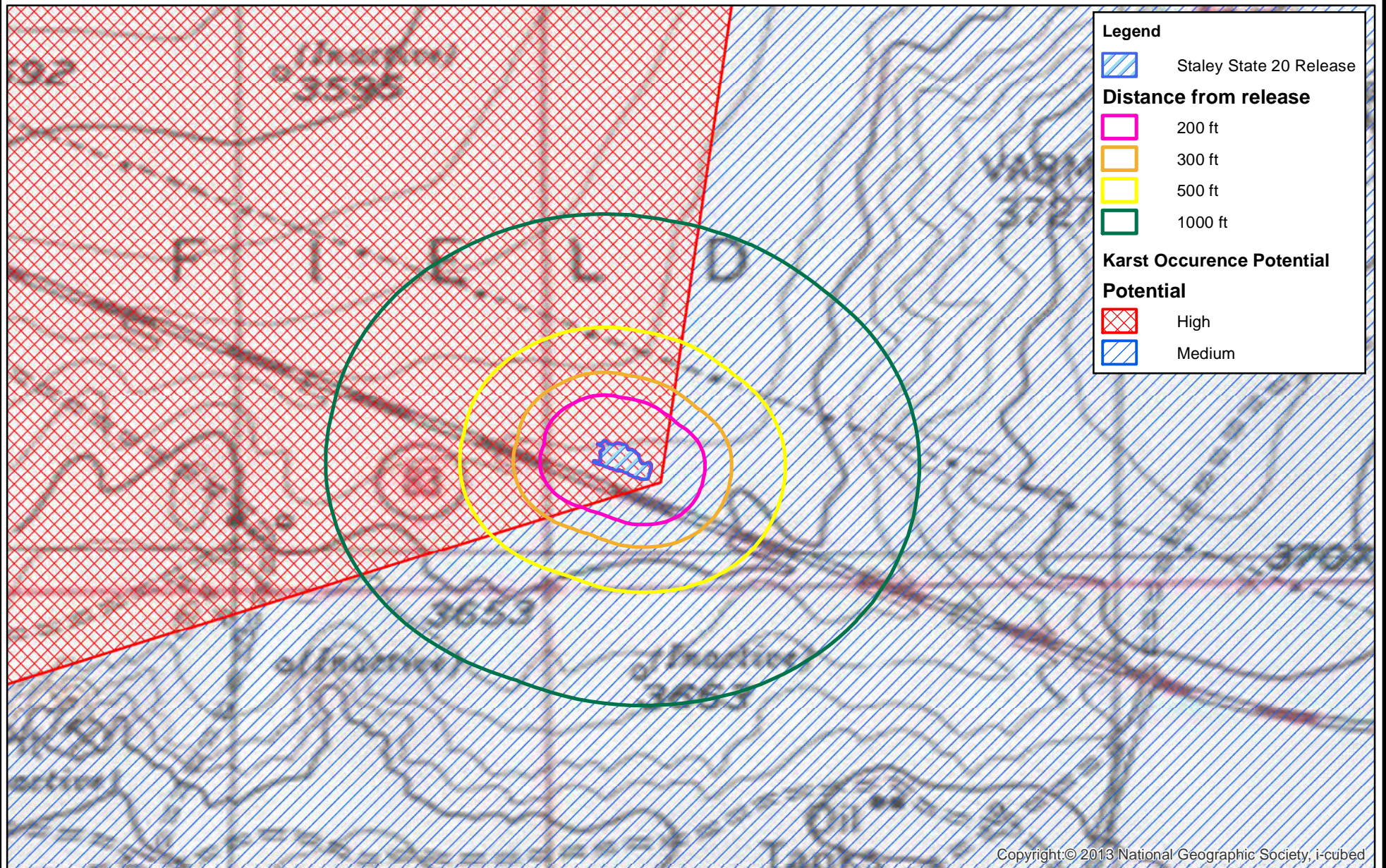
June 2015



0 1,000 2,000
Feet

R.T. Hicks Consultants, Ltd
901 Rio Grande Blvd NW Suite F-142
Albuquerque, NM 87104
Ph: 505.266.5004

Nearby Wetlands	Plate 6
Lime Rock Resources Staley State 20	June 2015



0 300 600
Feet

R.T. Hicks Consultants, Ltd
901 Rio Grande Blvd NW Suite F-142
Albuquerque, NM 87104
Ph: 505.266.5004

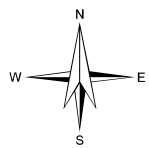
Karst Potential
Lime Rock Resources
Staley State 20

Plate 7
June 2015



Google

Imagery ©2015 , DigitalGlobe, NMRGIS, Texas Orthoimagery Program, USDA Farm Service Agency



0 200
Feet

R.T. Hicks Consultants, Ltd
901 Rio Grande Blvd NW Suite F-142
Albuquerque, NM 87104
Ph: 505.266.5004

Trench and Release Location

Plate 9

Lime Rock Resources
Staley State 20

July 2015

Appendix A

R.T. Hicks Consultants, Ltd.

901 Rio Grande Blvd. NW, Suite F-142
Albuquerque, NM 87104

Appendix B

R.T. Hicks Consultants, Ltd.

901 Rio Grande Blvd. NW, Suite F-142
Albuquerque, NM 87104

June 01, 2015

MIKE STUBBLEFIELD

R T HICKS CONSULTANTS

901 RIO GRANDE BLVD SUITE F-142

ALBUQUERQUE, NM 87104

RE: STALEY STATE NO. 20

Enclosed are the results of analyses for samples received by the laboratory on 05/29/15 16:35.

Cardinal Laboratories is accredited through Texas NELAP under certificate number T104704398-13-5. Accreditation applies to drinking water, non-potable water and solid and chemical materials. All accredited analytes are denoted by an asterisk (*). For a complete list of accredited analytes and matrices visit the TCEQ website at www.tceq.texas.gov/field/qa/lab_accred_certif.html.

Cardinal Laboratories is accredited through the State of Colorado Department of Public Health and Environment for:

Method EPA 552.2	Haloacetic Acids (HAA-5)
Method EPA 524.2	Total Trihalomethanes (TTHM)
Method EPA 524.4	Regulated VOCs (V1, V2, V3)

Accreditation applies to public drinking water matrices.

This report meets NELAP requirements and is made up of a cover page, analytical results, and a copy of the original chain-of-custody. If you have any questions concerning this report, please feel free to contact me.

Sincerely,



Celey D. Keene

Lab Director/Quality Manager

Analytical Results For:

R T HICKS CONSULTANTS
MIKE STUBBLEFIELD
901 RIO GRANDE BLVD SUITE F-142
ALBUQUERQUE NM, 87104
Fax To: NONE

Received: 05/29/2015
Reported: 06/01/2015
Project Name: STALEY STATE NO. 20
Project Number: 30-015-40983
Project Location: UT M SEC. 29 -T17S- R28E

Sampling Date: 05/29/2015
Sampling Type: Soil
Sampling Condition: ** (See Notes)
Sample Received By: Celey D. Keene

Sample ID: S-13 WESTSIDE WALL (H501386-01)

Chloride, SM4500Cl-B		mg/kg		Analyzed By: CK					
Analyte	Result	Reporting Limit	Analyzed	Method Blank	BS	% Recovery	True Value QC	RPD	Qualifier
Chloride	48.0	16.0	06/01/2015	ND	416	104	400	0.00	

Sample ID: S-14 NORTHSIDE WALL (H501386-02)

Chloride, SM4500Cl-B		mg/kg		Analyzed By: CK					
Analyte	Result	Reporting Limit	Analyzed	Method Blank	BS	% Recovery	True Value QC	RPD	Qualifier
Chloride	64.0	16.0	06/01/2015	ND	416	104	400	0.00	

Sample ID: S-15 EASTSIDE WALL (H501386-03)

Chloride, SM4500Cl-B		mg/kg		Analyzed By: CK					
Analyte	Result	Reporting Limit	Analyzed	Method Blank	BS	% Recovery	True Value QC	RPD	Qualifier
Chloride	224	16.0	06/01/2015	ND	416	104	400	0.00	

Cardinal Laboratories

*=Accredited Analyte

PLEASE NOTE: Liability and Damages. Cardinal's liability and client's exclusive remedy for any claim arising, whether based in contract or tort, shall be limited to the amount paid by client for analyses. All claims, including those for negligence and any other cause whatsoever shall be deemed waived unless made in writing and received by Cardinal within thirty (30) days after completion of the applicable service. In no event shall Cardinal be liable for incidental or consequential damages, including, without limitation, business interruptions, loss of use, or loss of profits incurred by client, its subsidiaries, affiliates or successors arising out of or related to the performance of the services hereunder by Cardinal, regardless of whether such claim is based upon any of the above stated reasons or otherwise. Results relate only to the samples identified above. This report shall not be reproduced except in full with written approval of Cardinal Laboratories.



Celey D. Keene, Lab Director/Quality Manager

Notes and Definitions

ND	Analyte NOT DETECTED at or above the reporting limit
RPD	Relative Percent Difference
**	Samples not received at proper temperature of 6°C or below.
***	Insufficient time to reach temperature.
-	Chloride by SM4500Cl-B does not require samples be received at or below 6°C Samples reported on an as received basis (wet) unless otherwise noted on report

Cardinal Laboratories

*=Accredited Analyte

PLEASE NOTE: Liability and Damages. Cardinal's liability and client's exclusive remedy for any claim arising, whether based in contract or tort, shall be limited to the amount paid by client for analyses. All claims, including those for negligence and any other cause whatsoever shall be deemed waived unless made in writing and received by Cardinal within thirty (30) days after completion of the applicable service. In no event shall Cardinal be liable for incidental or consequential damages, including, without limitation, business interruptions, loss of use, or loss of profits incurred by client, its subsidiaries, affiliates or successors arising out of or related to the performance of the services hereunder by Cardinal, regardless of whether such claim is based upon any of the above stated reasons or otherwise. Results relate only to the samples identified above. This report shall not be reproduced except in full with written approval of Cardinal Laboratories.



Celey D. Keene, Lab Director/Quality Manager



Page 4 of 4

101 East Marland, Hobbs, NM 88240
(575) 393-2326 FAX (575) 393-2476

Company Name: R.T. Hicks Consultants		P.O. #:		BILL TO										ANALYSIS REQUEST																									
Project Manager: Mike Stushfield		Company: LRE Operating LLC																																					
Address: 2411 South 13th Street		Attn: Mike Burnett																																					
City: Afton		Address:																																					
Phone #: 505-365-5034/Fax #:		City:																																					
Project #: 30-01546983		State: NM																																					
Project Name: STACY STATE RD		Zip:																																					
Project Location: 41 N sec. 29. T19S. R28E		Phone #:																																					
Sample Name: Mike Stushfield		Fax #:																																					
FOR LAB USE ONLY																																							
Lab I.D.		Sample I.D.		(G)RAB OR (C)OMP.		# CONTAINERS		GROUNDWATER		WASTEWATER		SOIL		OIL		SLUDGE		OTHER :		ACID/BASE:		ICE / COOL		OTHER :		DATE		TIME											
H501386		1 5-13 Westside wall		a								/														5/29/15		11:19 A											
		2 5-14 Northside wall		a								/														5/29/15		11:38 A											
		3 5-15 Eastside wall		a																						5/29/15		11:31 A											
						</																																	

May 27, 2015

MIKE STUBBLEFIELD

R T HICKS CONSULTANTS

901 RIO GRANDE BLVD SUITE F-142

ALBUQUERQUE, NM 87104

RE: STALEY STATE NO. 20

Enclosed are the results of analyses for samples received by the laboratory on 05/26/15 16:20.

Cardinal Laboratories is accredited through Texas NELAP under certificate number T104704398-13-5. Accreditation applies to drinking water, non-potable water and solid and chemical materials. All accredited analytes are denoted by an asterisk (*). For a complete list of accredited analytes and matrices visit the TCEQ website at www.tceq.texas.gov/field/qa/lab_accred_certif.html.

Cardinal Laboratories is accredited through the State of Colorado Department of Public Health and Environment for:

Method EPA 552.2	Haloacetic Acids (HAA-5)
Method EPA 524.2	Total Trihalomethanes (TTHM)
Method EPA 524.4	Regulated VOCs (V1, V2, V3)

Accreditation applies to public drinking water matrices.

This report meets NELAP requirements and is made up of a cover page, analytical results, and a copy of the original chain-of-custody. If you have any questions concerning this report, please feel free to contact me.

Sincerely,



Celey D. Keene

Lab Director/Quality Manager

Analytical Results For:

R T HICKS CONSULTANTS
MIKE STUBBLEFIELD
901 RIO GRANDE BLVD SUITE F-142
ALBUQUERQUE NM, 87104
Fax To: NONE

Received: 05/26/2015
Reported: 05/27/2015
Project Name: STALEY STATE NO. 20
Project Number: 30-015-40983
Project Location: UT M SEC. 29 -T17S- R30E

Sampling Date: 05/26/2015
Sampling Type: Soil
Sampling Condition: ** (See Notes)
Sample Received By: Jodi Henson

Sample ID: S-7 STOCKPILED MATERIAL (H501309-01)**Chloride, SM4500Cl-B****mg/kg****Analyzed By: AP**

Analyte	Result	Reporting Limit	Analyzed	Method Blank	BS	% Recovery	True Value QC	RPD	Qualifier
Chloride	2720	16.0	05/27/2015	ND	416	104	400	3.92	

Cardinal Laboratories

*=Accredited Analyte

PLEASE NOTE: Liability and Damages. Cardinal's liability and client's exclusive remedy for any claim arising, whether based in contract or tort, shall be limited to the amount paid by client for analyses. All claims, including those for negligence and any other cause whatsoever shall be deemed waived unless made in writing and received by Cardinal within thirty (30) days after completion of the applicable service. In no event shall Cardinal be liable for incidental or consequential damages, including, without limitation, business interruptions, loss of use, or loss of profits incurred by client, its subsidiaries, affiliates or successors arising out of or related to the performance of the services hereunder by Cardinal, regardless of whether such claim is based upon any of the above stated reasons or otherwise. Results relate only to the samples identified above. This report shall not be reproduced except in full with written approval of Cardinal Laboratories.



Celey D. Keene, Lab Director/Quality Manager

Notes and Definitions

ND	Analyte NOT DETECTED at or above the reporting limit
RPD	Relative Percent Difference
**	Samples not received at proper temperature of 6°C or below.
***	Insufficient time to reach temperature.
-	Chloride by SM4500Cl-B does not require samples be received at or below 6°C Samples reported on an as received basis (wet) unless otherwise noted on report

Cardinal Laboratories

*=Accredited Analyte

PLEASE NOTE: Liability and Damages. Cardinal's liability and client's exclusive remedy for any claim arising, whether based in contract or tort, shall be limited to the amount paid by client for analyses. All claims, including those for negligence and any other cause whatsoever shall be deemed waived unless made in writing and received by Cardinal within thirty (30) days after completion of the applicable service. In no event shall Cardinal be liable for incidental or consequential damages, including, without limitation, business interruptions, loss of use, or loss of profits incurred by client, its subsidiaries, affiliates or successors arising out of or related to the performance of the services hereunder by Cardinal, regardless of whether such claim is based upon any of the above stated reasons or otherwise. Results relate only to the samples identified above. This report shall not be reproduced except in full with written approval of Cardinal Laboratories.



Celey D. Keene, Lab Director/Quality Manager



CARDINAL Laboratories

CHAIN-OF-CUSTODY AND ANALYSIS REQUEST

101 East Marland, Hobbs, NM 88240
(575) 393-2326 FAX (575) 393-2476

Company Name: <u>R.T. Hilde Consultants</u>		BILL TO		ANALYSIS REQUEST											
Project Manager: <u>Mike Stubblefield</u>		P.O. #:													
Address: <u>2411 South 13th Street</u>		Company: <u>URE Operating LLC</u>													
City: <u>Artesia</u>		Attn: <u>Mike Bahrer</u>													
State: <u>NM</u>		Address:													
Zip: <u>88210</u>		City:													
Phone #: <u>505-365-5034</u>		State:													
Fax #: <u>505-365-5034</u>		Zip:													
Project #: <u>30-015-40983</u>		Project Owner: <u>URE Operating LLC</u>													
Project Name: <u>Staley Site No. 20</u>		City:													
Project Location: <u>Ut. M sec 29-T10S-R30E</u>		State:													
Sampler Name: <u>Mike Stubblefield</u>		Phone #:													
Fax #:															
FOR LAB USE ONLY															
Lab I.D.	Sample I.D.	(G)RAB OR (C)OMP.	# CONTAINERS	MATRIX			PRESERV.	SAMPLING							
		GROUNDWATER		SOIL											
		WASTEWATER		OIL											
		SLUDGE		OTHER:											
		ACID/BASE:		ICE / COOL											
		OTHER:		DATE	TIME										
<u>H5E1329</u>	<u>5-7 stockpiled material</u>	<u>C</u>		<u>5/26/15</u>	<u>3:06P</u>	<u>Total chlorides</u>									
PLEASE NOTE: Liability and Damages, Cardinal's liability and client's exclusive remedy for any claim arising whether based in contract or tort, shall be limited to the amount paid by the client for the analyses. All claims including those for negligence and any other cause whatsoever shall be deemed waived unless made in writing and received by Cardinal within 30 days after completion of the applicable service. In no event shall Cardinal be liable for incidental or consequential damages, including without limitation, business interruption, loss of use, or loss of profits incurred by client, its subsidiaries, affiliates or successors arising out of or related to the performance of services rendered by Cardinal, regardless of whether such claim is based upon any of the above stated reasons or otherwise.															
Relinquished By: <u>Mike Stubblefield</u>	Date: <u>5/26/15</u>	Received By: <u>Mike Bahrer</u>	Phone Result: <input type="checkbox"/> Yes <input type="checkbox"/> No Add'l Phone #:												
Relinquished By: <u>Mike Stubblefield</u>	Date: <u>5/26/15</u>	Received By: <u>Mike Bahrer</u>	Fax Result: <input type="checkbox"/> Yes <input type="checkbox"/> No Add'l Fax #:												
REMARKS: <u>RUSTY!!</u>															
Delivered By: (Circle One) <u>23.62</u> Sample Condition Cool <input checked="" type="checkbox"/> Intact <input type="checkbox"/> Yes <input type="checkbox"/> No															
Sampler - UPS - Bus - Other: <u>23.62</u> CHECKED BY: <u>[Signature]</u> (Initials)															

† Cardinal cannot accept verbal changes. Please fax written changes to (575) 393-2326

May 20, 2015

MIKE STUBBLEFIELD

R T HICKS CONSULTANTS

901 RIO GRANDE BLVD SUITE F-142

ALBUQUERQUE, NM 87104

RE: STALEY STATE NO. 20

Enclosed are the results of analyses for samples received by the laboratory on 05/18/15 13:03.

Cardinal Laboratories is accredited through Texas NELAP under certificate number T104704398-13-5. Accreditation applies to drinking water, non-potable water and solid and chemical materials. All accredited analytes are denoted by an asterisk (*). For a complete list of accredited analytes and matrices visit the TCEQ website at www.tceq.texas.gov/field/qa/lab_accred_certif.html.

Cardinal Laboratories is accredited through the State of Colorado Department of Public Health and Environment for:

Method EPA 552.2	Haloacetic Acids (HAA-5)
Method EPA 524.2	Total Trihalomethanes (TTHM)
Method EPA 524.4	Regulated VOCs (V1, V2, V3)

Accreditation applies to public drinking water matrices.

This report meets NELAP requirements and is made up of a cover page, analytical results, and a copy of the original chain-of-custody. If you have any questions concerning this report, please feel free to contact me.

Sincerely,



Celey D. Keene

Lab Director/Quality Manager

Analytical Results For:

R T HICKS CONSULTANTS
MIKE STUBBLEFIELD
901 RIO GRANDE BLVD SUITE F-142
ALBUQUERQUE NM, 87104
Fax To: NONE

Received: 05/18/2015
Reported: 05/20/2015
Project Name: STALEY STATE NO. 20
Project Number: 30-015-40983
Project Location: UT M SEC. 29 -T175- R30E

Sampling Date: 05/15/2015
Sampling Type: Soil
Sampling Condition: ** (See Notes)
Sample Received By: Jodi Henson

Sample ID: S - 1 0 ' (H501260-01)

Chloride, SM4500CI-B			mg/kg		Analyzed By: AP				
Analyte	Result	Reporting Limit	Analyzed	Method Blank	BS	% Recovery	True Value QC	RPD	Qualifier
Chloride	12900	16.0	05/20/2015	ND	400	100	400	3.92	

Sample ID: S- 1 .5 ' (H501260-02)

Chloride, SM4500CI-B			mg/kg		Analyzed By: AP				
Analyte	Result	Reporting Limit	Analyzed	Method Blank	BS	% Recovery	True Value QC	RPD	Qualifier
Chloride	4280	16.0	05/20/2015	ND	400	100	400	3.92	

Sample ID: S- 1 1 ' (H501260-03)

BTX 8021B			mg/kg		Analyzed By: MS				
Analyte	Result	Reporting Limit	Analyzed	Method Blank	BS	% Recovery	True Value QC	RPD	Qualifier
Benzene*	<0.050	0.050	05/19/2015	ND	1.81	90.7	2.00	1.58	
Toluene*	<0.050	0.050	05/19/2015	ND	1.97	98.4	2.00	3.91	
Ethylbenzene*	<0.050	0.050	05/19/2015	ND	1.86	93.0	2.00	3.46	
Total Xylenes*	<0.150	0.150	05/19/2015	ND	5.54	92.3	6.00	4.12	
Total BTX	<0.300	0.300	05/19/2015	ND					

Surrogate: 4-Bromofluorobenzene (PID) 110 % 61-154

Chloride, SM4500CI-B			mg/kg		Analyzed By: AP				
Analyte	Result	Reporting Limit	Analyzed	Method Blank	BS	% Recovery	True Value QC	RPD	Qualifier
Chloride	496	16.0	05/18/2015	ND	400	100	400	0.00	

Cardinal Laboratories

*=Accredited Analyte

PLEASE NOTE: Liability and Damages. Cardinal's liability and client's exclusive remedy for any claim arising, whether based in contract or tort, shall be limited to the amount paid by client for analyses. All claims, including those for negligence and any other cause whatsoever shall be deemed waived unless made in writing and received by Cardinal within thirty (30) days after completion of the applicable service. In no event shall Cardinal be liable for incidental or consequential damages, including, without limitation, business interruptions, loss of use, or loss of profits incurred by client, its subsidiaries, affiliates or successors arising out of or related to the performance of the services hereunder by Cardinal, regardless of whether such claim is based upon any of the above stated reasons or otherwise. Results relate only to the samples identified above. This report shall not be reproduced except in full with written approval of Cardinal Laboratories.



Celey D. Keene, Lab Director/Quality Manager

Analytical Results For:

 R T HICKS CONSULTANTS
 MIKE STUBBLEFIELD
 901 RIO GRANDE BLVD SUITE F-142
 ALBUQUERQUE NM, 87104
 Fax To: NONE

 Received: 05/18/2015
 Reported: 05/20/2015
 Project Name: STALEY STATE NO. 20
 Project Number: 30-015-40983
 Project Location: UT M SEC. 29 -T175- R30E

 Sampling Date: 05/15/2015
 Sampling Type: Soil
 Sampling Condition: ** (See Notes)
 Sample Received By: Jodi Henson

Sample ID: S - 1 2 ' (H501260-04)

Chloride, SM4500Cl-B		mg/kg		Analyzed By: AP						
Analyte	Result	Reporting Limit	Analyzed	Method Blank	BS	% Recovery	True Value QC	RPD	Qualifier	
Chloride	960	16.0	05/18/2015	ND	400	100	400	0.00		

Sample ID: S - 1 3 ' (H501260-05)

Chloride, SM4500Cl-B		mg/kg		Analyzed By: AP					
Analyte	Result	Reporting Limit	Analyzed	Method Blank	BS	% Recovery	True Value QC	RPD	Qualifier
Chloride	128	16.0	05/18/2015	ND	400	100	400	0.00	

Sample ID: S - 1 4 ' (H501260-06)

Chloride, SM4500Cl-B		mg/kg		Analyzed By: AP					
Analyte	Result	Reporting Limit	Analyzed	Method Blank	BS	% Recovery	True Value QC	RPD	Qualifier
Chloride	48.0	16.0	05/18/2015	ND	400	100	400	0.00	

Sample ID: S - 2 0 ' (H501260-08)

Chloride, SM4500Cl-B		mg/kg		Analyzed By: AP					
Analyte	Result	Reporting Limit	Analyzed	Method Blank	BS	% Recovery	True Value QC	RPD	Qualifier
Chloride	26400	16.0	05/20/2015	ND	400	100	400	3.92	

Sample ID: S - 2 .5 ' (H501260-09)

Chloride, SM4500Cl-B		mg/kg		Analyzed By: AP					
Analyte	Result	Reporting Limit	Analyzed	Method Blank	BS	% Recovery	True Value QC	RPD	Qualifier
Chloride	4960	16.0	05/20/2015	ND	400	100	400	3.92	

Cardinal Laboratories

*=Accredited Analyte

PLEASE NOTE: Liability and Damages. Cardinal's liability and client's exclusive remedy for any claim arising, whether based in contract or tort, shall be limited to the amount paid by client for analyses. All claims, including those for negligence and any other cause whatsoever shall be deemed waived unless made in writing and received by Cardinal within thirty (30) days after completion of the applicable service. In no event shall Cardinal be liable for incidental or consequential damages, including, without limitation, business interruptions, loss of use, or loss of profits incurred by client, its subsidiaries, affiliates or successors arising out of or related to the performance of the services hereunder by Cardinal, regardless of whether such claim is based upon any of the above stated reasons or otherwise. Results relate only to the samples identified above. This report shall not be reproduced except in full with written approval of Cardinal Laboratories.



Celey D. Keene, Lab Director/Quality Manager

Analytical Results For:

R T HICKS CONSULTANTS
MIKE STUBBLEFIELD
901 RIO GRANDE BLVD SUITE F-142
ALBUQUERQUE NM, 87104
Fax To: NONE

Received: 05/18/2015
Reported: 05/20/2015
Project Name: STALEY STATE NO. 20
Project Number: 30-015-40983
Project Location: UT M SEC. 29 -T175- R30E

Sampling Date: 05/15/2015
Sampling Type: Soil
Sampling Condition: ** (See Notes)
Sample Received By: Jodi Henson

Sample ID: S - 2 1 ' (H501260-10)

BTEx 8021B		mg/kg		Analyzed By: MS					
Analyte	Result	Reporting Limit	Analyzed	Method Blank	BS	% Recovery	True Value QC	RPD	Qualifier
Benzene*	<0.050	0.050	05/19/2015	ND	1.81	90.7	2.00	1.58	
Toluene*	<0.050	0.050	05/19/2015	ND	1.97	98.4	2.00	3.91	
Ethylbenzene*	<0.050	0.050	05/19/2015	ND	1.86	93.0	2.00	3.46	
Total Xylenes*	<0.150	0.150	05/19/2015	ND	5.54	92.3	6.00	4.12	
Total BTEX	<0.300	0.300	05/19/2015	ND					

Surrogate: 4-Bromofluorobenzene (PID) 110 % 61-154

Chloride, SM4500CI-B		mg/kg		Analyzed By: AP					
Analyte	Result	Reporting Limit	Analyzed	Method Blank	BS	% Recovery	True Value QC	RPD	Qualifier
Chloride	3920	16.0	05/18/2015	ND	400	100	400	0.00	

Sample ID: S - 2 2 ' (H501260-11)

Chloride, SM4500CI-B		mg/kg		Analyzed By: AP					
Analyte	Result	Reporting Limit	Analyzed	Method Blank	BS	% Recovery	True Value QC	RPD	Qualifier
Chloride	144	16.0	05/18/2015	ND	400	100	400	0.00	

Sample ID: S - 2 3 ' (H501260-12)

Chloride, SM4500Cl-B		mg/kg		Analyzed By: AP					
Analyte	Result	Reporting Limit	Analyzed	Method Blank	BS	% Recovery	True Value QC	RPD	Qualifier
Chloride	144	16.0	05/18/2015	ND	400	100	400	0.00	

Cardinal Laboratories

*=Accredited Analyte

PLEASE NOTE: Liability and Damages. Cardinal's liability and client's exclusive remedy for any claim arising, whether based in contract or tort, shall be limited to the amount paid by client for analyses. All claims, including those for negligence and any other cause whatsoever shall be deemed waived unless made in writing and received by Cardinal within thirty (30) days after completion of the applicable service. In no event shall Cardinal be liable for incidental or consequential damages, including, without limitation, business interruptions, loss of use, or loss of profits incurred by client, its subsidiaries, affiliates or successors arising out of or related to the performance of the services hereunder by Cardinal, regardless of whether such claim is based upon any of the above stated reasons or otherwise. Results relate only to the samples identified above. This report shall not be reproduced except in full with written approval of Cardinal Laboratories.



Celey D. Keene, Lab Director/Quality Manager

Analytical Results For:

R T HICKS CONSULTANTS
MIKE STUBBLEFIELD
901 RIO GRANDE BLVD SUITE F-142
ALBUQUERQUE NM, 87104
Fax To: NONE

Received: 05/18/2015
Reported: 05/20/2015
Project Name: STALEY STATE NO. 20
Project Number: 30-015-40983
Project Location: UT M SEC. 29 -T175- R30E

Sampling Date: 05/15/2015
Sampling Type: Soil
Sampling Condition: ** (See Notes)
Sample Received By: Jodi Henson

Sample ID: S - 2 4 ' (H501260-13)

Chloride, SM4500Cl-B		mg/kg		Analyzed By: AP					
Analyte	Result	Reporting Limit	Analyzed	Method Blank	BS	% Recovery	True Value QC	RPD	Qualifier
Chloride	96.0	16.0	05/18/2015	ND	400	100	400	3.92	

Sample ID: S - 3 0 ' (H501260-14)

Chloride, SM4500Cl-B		mg/kg		Analyzed By: AP					
Analyte	Result	Reporting Limit	Analyzed	Method Blank	BS	% Recovery	True Value QC	RPD	Qualifier
Chloride	15200	16.0	05/20/2015	ND	400	100	400	3.92	

Sample ID: S - 3 .5 ' (H501260-15)

Chloride, SM4500Cl-B		mg/kg		Analyzed By: AP					
Analyte	Result	Reporting Limit	Analyzed	Method Blank	BS	% Recovery	True Value QC	RPD	Qualifier
Chloride	2200	16.0	05/20/2015	ND	400	100	400	3.92	

Sample ID: S - 3 1 ' (H501260-16)

Chloride, SM4500Cl-B		mg/kg		Analyzed By: AP					
Analyte	Result	Reporting Limit	Analyzed	Method Blank	BS	% Recovery	True Value QC	RPD	Qualifier
Chloride	736	16.0	05/18/2015	ND	400	100	400	3.92	

Sample ID: S - 3 2 ' (H501260-17)

Chloride, SM4500Cl-B		mg/kg		Analyzed By: AP					
Analyte	Result	Reporting Limit	Analyzed	Method Blank	BS	% Recovery	True Value QC	RPD	Qualifier
Chloride	160	16.0	05/18/2015	ND	400	100	400	3.92	

Cardinal Laboratories

*=Accredited Analyte

PLEASE NOTE: Liability and Damages. Cardinal's liability and client's exclusive remedy for any claim arising, whether based in contract or tort, shall be limited to the amount paid by client for analyses. All claims, including those for negligence and any other cause whatsoever shall be deemed waived unless made in writing and received by Cardinal within thirty (30) days after completion of the applicable service. In no event shall Cardinal be liable for incidental or consequential damages, including, without limitation, business interruptions, loss of use, or loss of profits incurred by client, its subsidiaries, affiliates or successors arising out of or related to the performance of the services hereunder by Cardinal, regardless of whether such claim is based upon any of the above stated reasons or otherwise. Results relate only to the samples identified above. This report shall not be reproduced except in full with written approval of Cardinal Laboratories.



Celey D. Keene, Lab Director/Quality Manager

Analytical Results For:

R T HICKS CONSULTANTS
MIKE STUBBLEFIELD
901 RIO GRANDE BLVD SUITE F-142
ALBUQUERQUE NM, 87104
Fax To: NONE

Received: 05/18/2015
Reported: 05/20/2015
Project Name: STALEY STATE NO. 20
Project Number: 30-015-40983
Project Location: UT M SEC. 29 -T175- R30E

Sampling Date: 05/15/2015
Sampling Type: Soil
Sampling Condition: ** (See Notes)
Sample Received By: Jodi Henson

Sample ID: S - 3 3 ' (H501260-18)

Chloride, SM4500Cl-B		mg/kg		Analyzed By: AP						
Analyte	Result	Reporting Limit	Analyzed	Method Blank	BS	% Recovery	True Value QC	RPD	Qualifier	
Chloride	112	16.0	05/18/2015	ND	400	100	400	3.92		

Sample ID: S - 3 4 ' (H501260-19)

Chloride, SM4500Cl-B		mg/kg		Analyzed By: AP						
Analyte	Result	Reporting Limit	Analyzed	Method Blank	BS	% Recovery	True Value QC	RPD	Qualifier	
Chloride	80.0	16.0	05/18/2015	ND	400	100	400	3.92		

Sample ID: S - 4 0 ' (H501260-20)

Chloride, SM4500Cl-B		mg/kg		Analyzed By: AP						
Analyte	Result	Reporting Limit	Analyzed	Method Blank	BS	% Recovery	True Value QC	RPD	Qualifier	
Chloride	15600	16.0	05/20/2015	ND	400	100	400	3.92		

Sample ID: S - 4 .5 ' (H501260-21)

Chloride, SM4500Cl-B		mg/kg		Analyzed By: AP					
Analyte	Result	Reporting Limit	Analyzed	Method Blank	BS	% Recovery	True Value QC	RPD	Qualifier
Chloride	64.0	16.0	05/20/2015	ND	400	100	400	3.92	

Sample ID: S - 4 1 ' (H501260-22)

Chloride, SM4500Cl-B		mg/kg		Analyzed By: AP					
Analyte	Result	Reporting Limit	Analyzed	Method Blank	BS	% Recovery	True Value QC	RPD	Qualifier
Chloride	112	16.0	05/18/2015	ND	400	100	400	3.92	

Cardinal Laboratories

*=Accredited Analyte

PLEASE NOTE: Liability and Damages. Cardinal's liability and client's exclusive remedy for any claim arising, whether based in contract or tort, shall be limited to the amount paid by client for analyses. All claims, including those for negligence and any other cause whatsoever shall be deemed waived unless made in writing and received by Cardinal within thirty (30) days after completion of the applicable service. In no event shall Cardinal be liable for incidental or consequential damages, including, without limitation, business interruptions, loss of use, or loss of profits incurred by client, its subsidiaries, affiliates or successors arising out of or related to the performance of the services hereunder by Cardinal, regardless of whether such claim is based upon any of the above stated reasons or otherwise. Results relate only to the samples identified above. This report shall not be reproduced except in full with written approval of Cardinal Laboratories.



Celey D. Keene, Lab Director/Quality Manager

Analytical Results For:

 R T HICKS CONSULTANTS
 MIKE STUBBLEFIELD
 901 RIO GRANDE BLVD SUITE F-142
 ALBUQUERQUE NM, 87104
 Fax To: NONE

 Received: 05/18/2015
 Reported: 05/20/2015
 Project Name: STALEY STATE NO. 20
 Project Number: 30-015-40983
 Project Location: UT M SEC. 29 -T175- R30E

 Sampling Date: 05/15/2015
 Sampling Type: Soil
 Sampling Condition: ** (See Notes)
 Sample Received By: Jodi Henson

Sample ID: S - 4 2 ' (H501260-23)

Chloride, SM4500Cl-B		mg/kg		Analyzed By: AP						
Analyte	Result	Reporting Limit	Analyzed	Method Blank	BS	% Recovery	True Value QC	RPD	Qualifier	
Chloride	80.0	16.0	05/18/2015	ND	400	100	400	3.92		

Sample ID: S - 4 3 ' (H501260-24)

Chloride, SM4500Cl-B		mg/kg		Analyzed By: AP						
Analyte	Result	Reporting Limit	Analyzed	Method Blank	BS	% Recovery	True Value QC	RPD	Qualifier	
Chloride	64.0	16.0	05/18/2015	ND	400	100	400	3.92		

Sample ID: S - 4 4 ' (H501260-25)

Chloride, SM4500Cl-B		mg/kg		Analyzed By: AP					
Analyte	Result	Reporting Limit	Analyzed	Method Blank	BS	% Recovery	True Value QC	RPD	Qualifier
Chloride	48.0	16.0	05/18/2015	ND	400	100	400	3.92	

Sample ID: S - 5 0 ' (H501260-26)

Chloride, SM4500Cl-B		mg/kg		Analyzed By: AP						
Analyte	Result	Reporting Limit	Analyzed	Method Blank	BS	% Recovery	True Value QC	RPD	Qualifier	
Chloride	18800	16.0	05/20/2015	ND	400	100	400	3.92		

Sample ID: S - 5 .5' (H501260-27)

Chloride, SM4500Cl-B		mg/kg		Analyzed By: AP					
Analyte	Result	Reporting Limit	Analyzed	Method Blank	BS	% Recovery	True Value QC	RPD	Qualifier
Chloride	272	16.0	05/20/2015	ND	400	100	400	3.92	

Cardinal Laboratories

*=Accredited Analyte

PLEASE NOTE: Liability and Damages. Cardinal's liability and client's exclusive remedy for any claim arising, whether based in contract or tort, shall be limited to the amount paid by client for analyses. All claims, including those for negligence and any other cause whatsoever shall be deemed waived unless made in writing and received by Cardinal within thirty (30) days after completion of the applicable service. In no event shall Cardinal be liable for incidental or consequential damages, including, without limitation, business interruptions, loss of use, or loss of profits incurred by client, its subsidiaries, affiliates or successors arising out of or related to the performance of the services hereunder by Cardinal, regardless of whether such claim is based upon any of the above stated reasons or otherwise. Results relate only to the samples identified above. This report shall not be reproduced except in full with written approval of Cardinal Laboratories.



Celey D. Keene, Lab Director/Quality Manager

Analytical Results For:

 R T HICKS CONSULTANTS
 MIKE STUBBLEFIELD
 901 RIO GRANDE BLVD SUITE F-142
 ALBUQUERQUE NM, 87104
 Fax To: NONE

 Received: 05/18/2015
 Reported: 05/20/2015
 Project Name: STALEY STATE NO. 20
 Project Number: 30-015-40983
 Project Location: UT M SEC. 29 -T175- R30E

 Sampling Date: 05/15/2015
 Sampling Type: Soil
 Sampling Condition: ** (See Notes)
 Sample Received By: Jodi Henson

Sample ID: S - 5 1 ' (H501260-28)

Chloride, SM4500Cl-B		mg/kg		Analyzed By: AP						
Analyte	Result	Reporting Limit	Analyzed	Method Blank	BS	% Recovery	True Value QC	RPD	Qualifier	
Chloride	672	16.0	05/18/2015	ND	400	100	400	3.92		

Sample ID: S - 5 2 ' (H501260-29)

Chloride, SM4500Cl-B		mg/kg		Analyzed By: AP						
Analyte	Result	Reporting Limit	Analyzed	Method Blank	BS	% Recovery	True Value QC	RPD	Qualifier	
Chloride	48.0	16.0	05/18/2015	ND	400	100	400	3.92		

Sample ID: S - 5 3 ' (H501260-30)

Chloride, SM4500Cl-B		mg/kg		Analyzed By: AP					
Analyte	Result	Reporting Limit	Analyzed	Method Blank	BS	% Recovery	True Value QC	RPD	Qualifier
Chloride	80.0	16.0	05/18/2015	ND	400	100	400	3.92	

Sample ID: S - 5 4 ' (H501260-31)

Chloride, SM4500Cl-B		mg/kg		Analyzed By: AP					
Analyte	Result	Reporting Limit	Analyzed	Method Blank	BS	% Recovery	True Value QC	RPD	Qualifier
Chloride	80.0	16.0	05/18/2015	ND	400	100	400	3.92	

Sample ID: S - 6 0 ' (H501260-32)

Chloride, SM4500Cl-B		mg/kg		Analyzed By: AP					
Analyte	Result	Reporting Limit	Analyzed	Method Blank	BS	% Recovery	True Value QC	RPD	Qualifier
Chloride	16600	16.0	05/20/2015	ND	400	100	400	3.92	

Cardinal Laboratories

*=Accredited Analyte

PLEASE NOTE: Liability and Damages. Cardinal's liability and client's exclusive remedy for any claim arising, whether based in contract or tort, shall be limited to the amount paid by client for analyses. All claims, including those for negligence and any other cause whatsoever shall be deemed waived unless made in writing and received by Cardinal within thirty (30) days after completion of the applicable service. In no event shall Cardinal be liable for incidental or consequential damages, including, without limitation, business interruptions, loss of use, or loss of profits incurred by client, its subsidiaries, affiliates or successors arising out of or related to the performance of the services hereunder by Cardinal, regardless of whether such claim is based upon any of the above stated reasons or otherwise. Results relate only to the samples identified above. This report shall not be reproduced except in full with written approval of Cardinal Laboratories.



Celey D. Keene, Lab Director/Quality Manager

Analytical Results For:

R T HICKS CONSULTANTS
MIKE STUBBLEFIELD
901 RIO GRANDE BLVD SUITE F-142
ALBUQUERQUE NM, 87104
Fax To: NONE

Received: 05/18/2015
Reported: 05/20/2015
Project Name: STALEY STATE NO. 20
Project Number: 30-015-40983
Project Location: UT M SEC. 29 -T175- R30E

Sampling Date: 05/15/2015
Sampling Type: Soil
Sampling Condition: ** (See Notes)
Sample Received By: Jodi Henson

Sample ID: S - 6 1 ' (H501260-33)

Chloride, SM4500Cl-B		mg/kg		Analyzed By: AP						
Analyte	Result	Reporting Limit	Analyzed	Method Blank	BS	% Recovery	True Value QC	RPD	Qualifier	
Chloride	160	16.0	05/18/2015	ND	400	100	400	3.92		

Sample ID: S - 6 2 ' (H501260-34)

Chloride, SM4500Cl-B		mg/kg		Analyzed By: AP						
Analyte	Result	Reporting Limit	Analyzed	Method Blank	BS	% Recovery	True Value QC	RPD	Qualifier	
Chloride	128	16.0	05/18/2015	ND	400	100	400	3.92		

Sample ID: S - 6 3 ' (H501260-35)

Chloride, SM4500Cl-B		mg/kg		Analyzed By: AP						
Analyte	Result	Reporting Limit	Analyzed	Method Blank	BS	% Recovery	True Value QC	RPD	Qualifier	
Chloride	112	16.0	05/18/2015	ND	400	100	400	3.92		

Sample ID: S - 6 4 ' (H501260-36)

Chloride, SM4500Cl-B		mg/kg		Analyzed By: AP					
Analyte	Result	Reporting Limit	Analyzed	Method Blank	BS	% Recovery	True Value QC	RPD	Qualifier
Chloride	128	16.0	05/18/2015	ND	400	100	400	3.92	

Sample ID: BACKGROUND (H501260-37)

Chloride, SM4500Cl-B		mg/kg		Analyzed By: AP						
Analyte	Result	Reporting Limit	Analyzed	Method Blank	BS	% Recovery	True Value QC	RPD	Qualifier	
Chloride	<16.0	16.0	05/18/2015	ND	400	100	400	3.92		

Cardinal Laboratories

*=Accredited Analyte

PLEASE NOTE: Liability and Damages. Cardinal's liability and client's exclusive remedy for any claim arising, whether based in contract or tort, shall be limited to the amount paid by client for analyses. All claims, including those for negligence and any other cause whatsoever shall be deemed waived unless made in writing and received by Cardinal within thirty (30) days after completion of the applicable service. In no event shall Cardinal be liable for incidental or consequential damages, including, without limitation, business interruptions, loss of use, or loss of profits incurred by client, its subsidiaries, affiliates or successors arising out of or related to the performance of the services hereunder by Cardinal, regardless of whether such claim is based upon any of the above stated reasons or otherwise. Results relate only to the samples identified above. This report shall not be reproduced except in full with written approval of Cardinal Laboratories.



Celey D. Keene, Lab Director/Quality Manager

Analytical Results For:

R T HICKS CONSULTANTS
MIKE STUBBLEFIELD
901 RIO GRANDE BLVD SUITE F-142
ALBUQUERQUE NM, 87104
Fax To: NONE

Received: 05/18/2015
Reported: 05/20/2015
Project Name: STALEY STATE NO. 20
Project Number: 30-015-40983
Project Location: UT M SEC. 29 -T175- R30E

Sampling Date: 05/15/2015
Sampling Type: Soil
Sampling Condition: ** (See Notes)
Sample Received By: Jodi Henson

Sample ID: S - 6 .5 ' (H501260-38)

Chloride, SM4500Cl-B		mg/kg		Analyzed By: AP					
Analyte	Result	Reporting Limit	Analyzed	Method Blank	BS	% Recovery	True Value QC	RPD	Qualifier
Chloride	1280	16.0	05/20/2015	ND	400	100	400	3.92	

Cardinal Laboratories

*=Accredited Analyte

PLEASE NOTE: Liability and Damages. Cardinal's liability and client's exclusive remedy for any claim arising, whether based in contract or tort, shall be limited to the amount paid by client for analyses. All claims, including those for negligence and any other cause whatsoever shall be deemed waived unless made in writing and received by Cardinal within thirty (30) days after completion of the applicable service. In no event shall Cardinal be liable for incidental or consequential damages, including, without limitation, business interruptions, loss of use, or loss of profits incurred by client, its subsidiaries, affiliates or successors arising out of or related to the performance of the services hereunder by Cardinal, regardless of whether such claim is based upon any of the above stated reasons or otherwise. Results relate only to the samples identified above. This report shall not be reproduced except in full with written approval of Cardinal Laboratories.



Celey D. Keene, Lab Director/Quality Manager

Notes and Definitions

ND	Analyte NOT DETECTED at or above the reporting limit
RPD	Relative Percent Difference
**	Samples not received at proper temperature of 6°C or below.
***	Insufficient time to reach temperature.
-	Chloride by SM4500Cl-B does not require samples be received at or below 6°C Samples reported on an as received basis (wet) unless otherwise noted on report

Cardinal Laboratories

*=Accredited Analyte

PLEASE NOTE: Liability and Damages. Cardinal's liability and client's exclusive remedy for any claim arising, whether based in contract or tort, shall be limited to the amount paid by client for analyses. All claims, including those for negligence and any other cause whatsoever shall be deemed waived unless made in writing and received by Cardinal within thirty (30) days after completion of the applicable service. In no event shall Cardinal be liable for incidental or consequential damages, including, without limitation, business interruptions, loss of use, or loss of profits incurred by client, its subsidiaries, affiliates or successors arising out of or related to the performance of the services hereunder by Cardinal, regardless of whether such claim is based upon any of the above stated reasons or otherwise. Results relate only to the samples identified above. This report shall not be reproduced except in full with written approval of Cardinal Laboratories.



Celey D. Keene, Lab Director/Quality Manager



CHAIN-OF-CUSTODY AND ANALYSIS REQUEST

101 East Marland, Hobbs, NM 88240
(575) 393-2326 FAX (575) 393-2476

Company Name: AT Hicks Consultants

Project Manager: Mike Strublefield

Address: 2411 South 13th Street

City: Artesia State: N.M. Zip: 88210

Phone #: 505-365-5034 Fax #:

Project #: 30 015-40983 Project Owner: LRE Operating, LLC

Project Name: Stanley State No. 20

Project Location: URM Sec. 29-T195-R30E

Sample Name: Mike Strublefield

FOR LAB USE ONLY

Lab I.D. Sample I.D.

4501260

4501240																																																																																																																																																																																																																																																																																																																																																																																																																																																																																																																																																																																																																																																																																																																																																																																																																																																																																																																																																																																																																																																																																																																																																																																																																																																																																																																																																																																																												
1	5-1	0'	32.99450-104.20561	C 1	(G)RAB	# CONTAINERS	GROUNDS	WAS	SOIL	OIL	SLUDGE	OTHER	ACID	ICE	OTHER	DATE	TIME	80	1																																																																																																																																																																																																																																																																																																																																																																																																																																																																																																																																																																																																																																																																																																																																																																																																																																																																																																																																																																																																																																																																																																																																																																																																																																																																																																																																																																																									

PLEASE NOTE: Liability and Damages. Cardinal's liability and client's exclusive remedy for any claim arising whether based in contract or tort, shall be limited to the amount paid by the client for the analysis. All claims including those for negligence and any other cause whatsoever shall be deemed waived unless made in writing and received by Cardinal within 30 days after completion of the applicable service. In no event shall Cardinal be liable for incidental or consequential damages, including without limitation, business interruptions, loss of use, or loss of profits incurred by client, its subsidiaries, affiliates or successors arising out of or related to the performance of services rendered by Cardinal, regardless of whether such claim is based upon any of the above stated reasons or otherwise.

Relinquished By: Mike Strublefield

Date: 5/18/15

Relinquished By: Mike Strublefield

Date: 5/18-15

Delivered By: (Circle One) Other: 10.40c

Sample - UPS - Bus

+ Cardinal cannot accept verbal changes. Please fax written changes to (575) 393-2326 #54

REMARKS: Rush!!



CHAIN-OF-CUSTODY AND ANALYSIS REQUEST

101 East Marland, Hobbs, NM 88240
(575) 393-2326 FAX (575) 393-2476

ANALYSIS REQUEST

Company Name: <u>R.T. Hicks Consulting</u>		P.O. #:					
Project Manager: <u>Mike Stubbfield</u>		Company: <u>LRE Operating, LLC</u>					
Address: <u>2411 South 13th Street</u>		Attn: <u>Mike Barrett</u>					
City: <u>Alameda</u> State: <u>NM</u> Zip: <u>88210</u>		Address:					
Phone #: _____ Fax #: _____		City: _____					
Project #: <u>20-015-40923</u> Project Owner: <u>LRE Operating LLC</u>		State: _____ Zip: _____					
Project Name: <u>Staley State No. 20</u>		Phone #: _____					
Project Location: <u>UT. m sec. 29-T19S-R30E</u>		Fax #: _____					
Sample Name: <u>Mike Stubbfield</u>		PRESERV: _____					
FOR LAB USE ONLY		SAMPLING					
Lab I.D.	Sample I.D.	(G)RAB OR (C)OMP.	# CONTAINERS	MATRIX	DATE	TIME	ANALYSIS REQUEST
<u>4501360</u>	<u>5-2 2'</u>	<input checked="" type="checkbox"/>		GROUNDWATER	<u>5/15/15</u>	<u>2:53P</u>	<u>8015 BTEX</u>
<u>11</u>	<u>5-2 3'</u>	<input checked="" type="checkbox"/>		WASTEWATER	<u>5/15/15</u>	<u>3:03P</u>	<u>Total Chlorides</u>
<u>12</u>	<u>5-2 4'</u>	<input checked="" type="checkbox"/>		SOIL	<u>5/15/15</u>	<u>3:14P</u>	<u>Cl- added 5/20</u>
<u>13</u>	<u>5-2 4'</u>	<input checked="" type="checkbox"/>		OIL	<u>5/15/15</u>	<u>3:19P</u>	
<u>14</u>	<u>5-3 0 32.79993-104.20522</u>	<input checked="" type="checkbox"/>		SLUDGE	<u>5/15/15</u>	<u>3:23P</u>	
<u>15</u>	<u>5-3 1'</u>	<input checked="" type="checkbox"/>		OTHER:	<u>5/15/15</u>	<u>3:30P</u>	
<u>16</u>	<u>5-3 2'</u>	<input checked="" type="checkbox"/>		ACID/BASE:	<u>5/15/15</u>	<u>3:35P</u>	
<u>17</u>	<u>5-3 3'</u>	<input checked="" type="checkbox"/>		ICE / COOL	<u>5/15/15</u>	<u>3:42P</u>	
<u>18</u>	<u>5-3 4'</u>	<input checked="" type="checkbox"/>		OTHER:	<u>5/15/15</u>	<u>3:46P</u>	
<u>19</u>	<u>5-3 4'</u>	<input checked="" type="checkbox"/>			<u>5/15/15</u>		
<u>20</u>	<u>5-3 4'</u>	<input checked="" type="checkbox"/>			<u>5/15/15</u>		
PLEASE NOTE: Liability and Damages. Cardinal's liability and clients exclusive remedy for any claim arising from this contract or tort, shall be limited to the amount paid by the client for the analysis. All claims, including those for negligence and any other cause whatsoever shall be deemed waived unless made in writing and received by Cardinal within 30 days after completion of the applicable service. In no event shall Cardinal be liable for incidental or consequential damages, including without limitation, business interruptions, loss of use, or loss of profits incurred by client, its subsidiaries, affiliates or successors arising out of or related to the performance of services hereunder by Cardinal, regardless of whether such claim is based upon any of the above stated reasons or otherwise.							
Relinquished By: <u>Mike Stubbfield</u>		Date: <u>5/15/15</u>		Received By: <u>Mike Barrett</u>		Phone Result: <input type="checkbox"/> Yes <input type="checkbox"/> No <input type="checkbox"/> Add'l Phone #:	
Relinquished By: <u>Mike Stubbfield</u>		Time: <u>13:03</u>		Received By: <u>Mike Barrett</u>		Fax Result: <input type="checkbox"/> Yes <input type="checkbox"/> No <input type="checkbox"/> Add'l Fax #:	
Delivered By: (Circle One) <u>Other</u>		Sample Condition <input type="checkbox"/> Cool <input type="checkbox"/> Intact <input type="checkbox"/> Yes <input type="checkbox"/> No		CHECKED BY: <u>[Signature]</u>		REMARKS: <u>PUSH!</u>	
Sampler - UPS - Bus - <u>Other</u>		Time: <u>10:40a</u>					



415

(575) 393-2326 FAX (575) 393-2476

Written changes
#54



CARDINAL Laboratories

CHAIN-OF-CUSTODY AND ANALYSIS REQUEST

101 East Marland, Hobbs, NM 88240
(575) 393-2326 FAX (575) 393-2476

BILL TO

ANALYSIS REQUEST

Company Name: AT. HICK Consultants

Project Manager: Mike Stubblefield

Address: 2411 South 1st Street

City: Alameda State: NM Zip: 88210

Phone #: 505-265-5034 Fax #: _____

Project #: 30-015-40983 Project Owner: LRE Operating LLC

Project Name: Staley State No. 20

Project Location: vt. m sec. 29 T19S R30E

Sample Name: _____

FOR LAB USE ONLY

Lab I.D. _____ Sample I.D. _____

1501240

31

32

33

34

35

36

37

38

5-5

5-6

5-6

5-6

5-6

5-6

5-6

5-6

4'

0'

0'

2'

3'

4'

4'

32.15824.104.20530

C

C

C

C

C

C

C

C

C

C

C

C

C

C

C

C

C

C

C

C

C

C

C

C

C

C

C

C

C

C

C

C

C

C

C

C

C

C

C

C

C

C

C

C

C

C

C

C

C

C

C

C

C

C

C

C

C

C

C

C

C

C

C

C

C

C

C

C

C

C

C

C

C

C

C

C

C

C

C

C

C

C

C

C

C

C

C

C

C

C

C

C

C

C

C

C

C

C

C

C

C

C

C

C

C

C

C

C

C

C

C

C

C

C

C

C

C

C

C

C

C

C

C

C

C

C

C

C

C

C

C

C

C

C

C

C

C

C

C

C

C

C

C

C

C

C

C

C

C

C

C

C

C

C

C

C

C

C

C

C

C

C

C

C

C

C

C

C

C

C

C

C

C

C

C

C

C

C

C

C

C

C

C

C

C

C

C

C

C

C

C

C

C

C

C

C

C

C

C

C

C

C

C

C

C

C

C

C

C

C

C

C

C

C

C

C

C

C

C

C

C

C

C

C

C

C

C

C

C

C

C

C

C

C

C

C

C

C

C

C

C

C

C

C

C

C

C

C

C

C

C

C

C

C

C

C

C

C

C

C

C

C

C

C

C

C

C

C

C

C

C

C

C

C

C

C

C

C

C

C

C

C

C

C

C