



CORRECTIVE ACTION REPORT

Property:

B-7 Gathering Lateral Release
32.580222, -104.141698
NE¼ NE ¼, S14 T20S R28E
Eddy County, New Mexico
ECIRTS: 24188

August 2015

Apex Project No. 7030714G094.001

Prepared for:

Enterprise Field Services, LLC
PO Box 4324
Houston, TX 77252
Attention: Dina Ferguson

Prepared by:

A handwritten signature in blue ink, appearing to read 'K. Toby'.

Karolanne Toby
Project Geologist

A handwritten signature in black ink, appearing to read 'Liz Scaggs'.

Liz Scaggs, P.G.
Division Manager

TABLE OF CONTENTS

1.0	INTRODUCTION	1
1.1	Site Description & Background.....	1
1.2	Project Objective	1
2.0	SITE RANKING	2
3.0	RESPONSE ACTIONS.....	2
3.1	Soil Excavation Activities.....	2
3.2	Soil Sampling Program	3
4.0	DATA EVALUATION	3
4.1	Confirmation Soil Samples	3
5.0	FINDINGS AND RECOMMENDATIONS	4

LIST OF APPENDICES

Appendix A:	Figure 1 – Topographic Map Figure 2 – Site Vicinity Map Figure 3A – Grid Map Figure 3B – Excavation Map
Appendix B:	Photographic Documentation
Appendix C:	Analytical Tables
Appendix D:	Laboratory Analytical Reports & Chain-of-Custody Documentation
Appendix E:	NMOCD C-141
Appendix F:	Waste Disposal Tickets



CORRECTIVE ACTION REPORT

B-7 Gathering Lateral Release

32.580222, -104.141698

NE¼ NE ¼, S14 T20S R28E

Eddy County, New Mexico

ECIRTS: 24188

Apex Project No. 7030414G094.001

1.0 INTRODUCTION

1.1 Site Description & Background

The B-7 Gathering Lateral Release Site is located within the Enterprise Field Services, LLC (Enterprise) pipeline right-of-way (ROW) in the northeast (NE) ¼ of the northeast (NE) ¼ of Section 14 in Township 20 South and Range 28 East in rural Eddy County, New Mexico (32.580222N, 104.141698W), referred to hereinafter as the “Site” or “subject Site”. The Site is located south of an unpaved road on Bureau of Land Management (BLM) managed lands. The Site is surrounded by native vegetation rangeland periodically interrupted with oil and gas production and gathering facilities, including the B-7 Lateral Enterprise natural gas gathering pipeline which traverses the area from approximately east to west.

On November 9, 2014, Enterprise was notified of a pipeline leak on the B-7 Lateral natural gas gathering line. Enterprise isolated the leaking portion and the pipeline section was blown down to carry out repair activities. Approximately ten (10) barrels (bbls) of pipeline liquids were released from the pipeline. Enterprise initiated initial excavation activities at the Site in an effort to locate and repair the subsurface leak. The leak was subsequently identified and repaired.

A topographic map depicting the location of the Site is included as Figure 1, and a Site Vicinity Map is included as Figure 2 in Appendix A.

1.2 Project Objective

The primary objective of the corrective actions was to reduce the concentration of constituents of concern (COCs) in the on-Site soils to below the New Mexico Energy, Minerals, and Natural Resources Department (EMNRD), Oil Conservation Division (OCD) *Remediation Action Levels* using the New Mexico EMNRD OCD’s *Guidelines for Remediation of Leaks, Spills and Releases* as guidance.



2.0 SITE RANKING

In accordance with the New Mexico EMNRD OCD's *Guidelines for Remediation of Leaks, Spills and Releases*, Apex TITAN, Inc. (Apex) utilized the general site characteristics obtained during the completion of corrective action activities and information available from the New Mexico Office of the State Engineer (OSE) to determine the appropriate "ranking" for the Site. The ranking criteria and associated scoring are provided in the following table:

Ranking Criteria			Ranking Score
Depth to Groundwater	<50 feet	20	10
	50 to 99 feet	10	
	>100 feet	0	
Wellhead Protection Area <1,000 feet from a water source, or; <200 feet from private domestic water source.	Yes	20	0
	No	0	
Distance to Surface Water Body	<200 feet	20	0
	200 to 1,000 feet	10	
	>1,000 feet	0	
Total Ranking Score			10

Based on Apex's evaluation of the scoring criteria, the Site would have a maximum Total Ranking Score of "10". This ranking is based on the following:

- The approximate depth to the initial groundwater-bearing zone is greater than 50 feet but less than 99 feet at the site.
- No water source wells (municipal/community wells) were identified within 1,000 feet of the Site. No private domestic water sources were identified within 200 feet of the Site.
- The distance to the nearest surface water body is greater than 1,000 feet.

Based on a Total Ranking Score of "10", cleanup goals for soils remaining in place include: 10 milligrams per kilogram (mg/Kg) for benzene, 50 mg/Kg for total benzene, toluene, ethylbenzene and xylene (BTEX), 1,000 mg/Kg for Total Petroleum Hydrocarbons (TPH) and 1,000 mg/Kg for chlorides.

3.0 RESPONSE ACTIONS

3.1 Soil Excavation Activities

On November 14, 2014, Enterprise initiated excavation activities at the Site in an effort to locate and repair a subsurface leak. The leak was subsequently identified and repaired. Approximately ten (10) bbls of pipeline liquids were released from the pipeline. The leak was identified by Enterprise at the ground surface. During the corrective action activities, Willbros Construction, LLC (Willbros) provided heavy equipment and labor support, and Karolanne Toby and Travis Turner, Apex environmental professionals, provided environmental support.

The surface expression of the excavation measured approximately 50 feet long by 25 feet wide, with a total depth of approximately eight (8) feet below ground surface (bgs).

Surface impacts where the fluid sprayed ("spray area") were observed on the ground surface south of the release point, measuring approximately 320 feet wide by 240 feet long.

The spray area perimeter was delineated and the spray area was treated by applying a microbial-decomposition product (Microblaze®) to introduce additional nonpathogenic bacterial strains designed to metabolize petroleum hydrocarbons.

The stockpile was hauled off-site to a state approved waste disposal facility. The excavation will be backfilled with clean imported fill and contoured to surrounding grade.

3.2 Soil Sampling Program

Apex screened head-space samples of Site soils with a photoionization detector (PID) to aid in determining the excavation limits.

On February 25, 2015, Apex collected five (5) confirmation soil samples (N-Wall, S-Wall, E-Wall, W-Wall and RP), from the resulting excavation. In addition, one confirmation soil sample (SP) was taken from the stockpiled material.

Apex collected six (6) composite confirmation soil samples (A-1, A-2, B-1, B-2, C-1, C-2) from the spray area. Due to the size of the spray area, the perimeter was broken into grids. A five point composite sample was taken from each grid to ensure an accurate representation of the soil in each area was collected.

Soil samples were collected and delivered under chain of custody control to Trace Analysis laboratory in Midland, Texas for analysis of BTEX utilizing EPA SW-846 Method #8021B, TPH gasoline range organics (GRO) and diesel range organics (DRO) utilizing EPA SW-846 Method #8015 and chlorides utilizing EPA Method SM 4500-Cl B.

Executed chain-of-custody form and laboratory data sheets are provided in Appendix D. All samples were analyzed within specified holding times.

Figure 3A is a grid map indicating the extent of the spray area in relation to the excavation. Figure 3B is an excavation site map that indicates the approximate location of the excavated area in relation to pertinent land features (Appendix A).

4.0 DATA EVALUATION

The Site is subject to regulatory oversight by the New Mexico EMNRD OCD. To address activities related to condensate releases, the New Mexico EMNRD OCD utilizes the *Guidelines for Remediation of Leaks, Spills and Releases* as guidance, in addition to the OCD rules, specifically NMAC 19.15.29 *Remediation Plan*. These guidance documents establish investigation and abatement action requirements for sites subject to reporting and/or corrective action.

4.1 Confirmation Soil Samples

Apex compared the benzene, BTEX, TPH and chloride concentrations, or sample detection limits (SDLs), associated with the soil confirmation samples (N-Wall, S-Wall, E-Wall, W-Wall, RP and SP) collected from the excavated area and the confirmation soil samples taken from the spray area (A-1, A-2, B-1, B-2, C-1 and C-2) to the OCD *Recommended Remediation Action Levels* (RRALs) for sites having a total ranking score of "10".

The laboratory analyses of confirmation samples collected from the Site indicate benzene concentrations ranging from below the laboratory reporting limits to 0.0262 mg/Kg, which are below the OCD RRAL limits of 10 mg/Kg for a Site ranking of "10".

The laboratory analyses of the confirmation samples collected from the Site indicate total BTEX concentrations ranging from below the laboratory reporting limits to 0.0935 mg/Kg, which are below the OCD RRAL limits of 50 mg/Kg for a Site ranking of "10".

The laboratory analyses of the confirmation samples collected from the Site do not indicate combined TPH GRO/DRO concentrations above the laboratory reporting limits, which are below the OCD RRAL limits of 1,000 mg/Kg for a Site ranking of "10".

The laboratory analyses of the confirmation samples collected from the Site indicate chloride concentrations ranging from below the laboratory reporting limits to 383 mg/Kg, which are below the OCD RRAL limits of 1,000 mg/Kg for a Site ranking of "10".

Confirmation sample results are provided in Table 1 in Appendix C.

5.0 FINDINGS AND RECOMMENDATIONS

The B-7 Lateral Release Site is located within the Enterprise pipeline ROW in the northeast (NE) ¼ of the northeast (NE) ¼ of Section 14 in Township 20 South and Range 28 East in rural Eddy County, New Mexico (32.580222N, 104.141698W). The Site is located adjacent to an unpaved road on BLM managed lands. The Site is surrounded by native vegetation rangeland periodically interrupted with oil and gas production and gathering facilities, including the B-7 Lateral natural gas gathering pipeline which traverses the area from approximately east to west.

On November 9, 2014, Enterprise was informed of a pipeline leak. Enterprise isolated the leaking portion, and the pipeline section was blown down to carry out repair activities. Approximately ten (10) bbls of pipeline liquids were released from the pipeline. Enterprise initiated initial excavation activities at the Site in an effort to locate and repair the subsurface leak. The leak was subsequently identified and repaired.

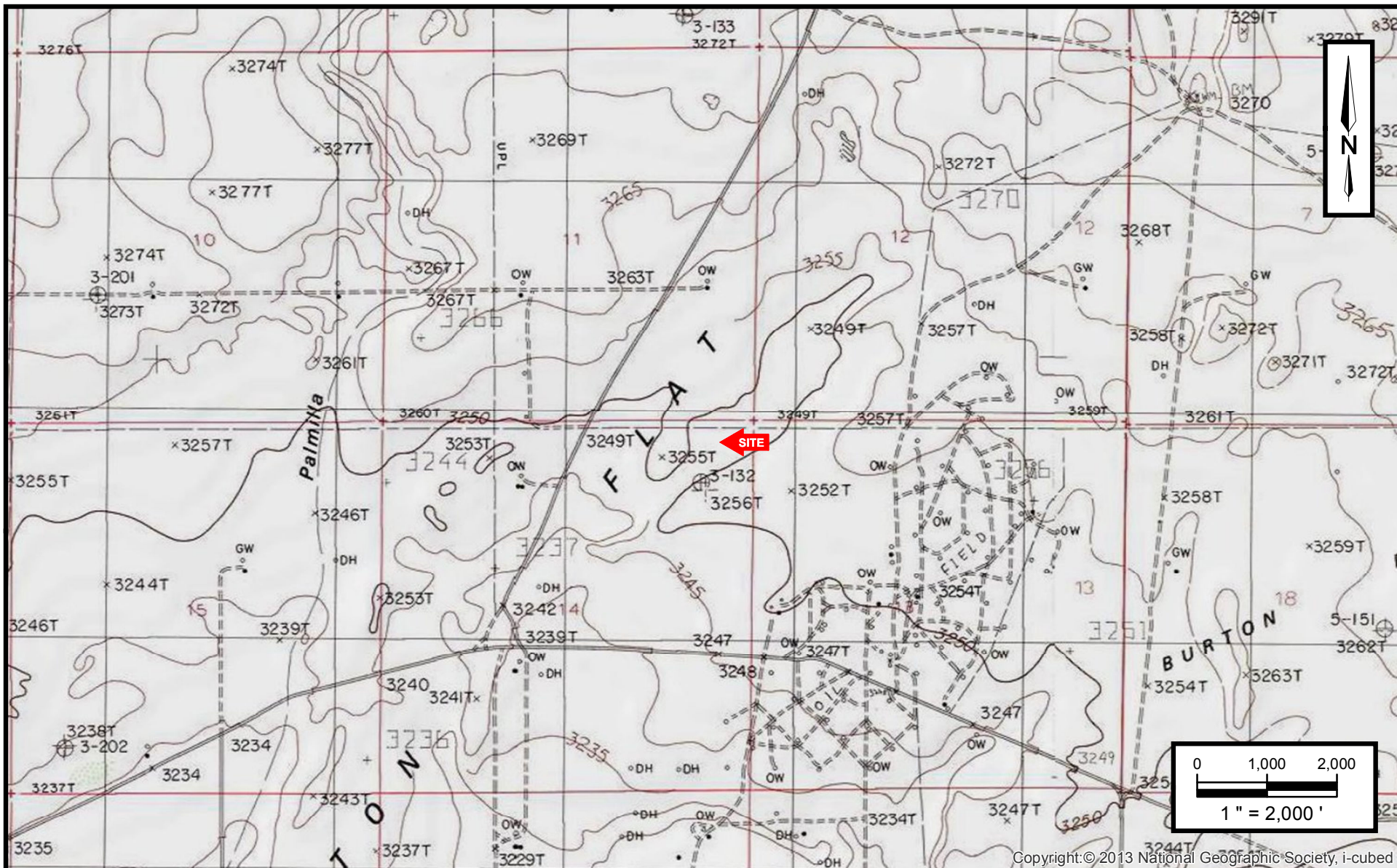
- The primary objective of the corrective actions was to reduce the concentration of COCs in the on-Site soils to below the New Mexico EMNRD OCD RALs using the New Mexico EMNRD OCD's *Guidelines for Remediation of Leaks, Spills and Releases* as guidance.
- The Site was scraped utilizing heavy equipment to remove surface soils affected by the release. The surface expression of the excavation measured approximately 50 feet long by 25 feet wide, with a total depth of approximately eight (8) feet (bgs). The spray area to the south of the excavation was subsequently treated with a Microblaze solution. The perimeter of the spray area was approximately 320 feet wide by 240 feet long.
- A total of five (5) final confirmation soil samples were collected from the resulting excavation and six (6) confirmation soil samples were collected from the spray area for laboratory analyses. Based on analytical results, soils remaining in place do not exhibit COC concentrations above the OCD *Remediation Action Levels* for a Site ranking of "10".
- The stockpile was hauled off-site to a state approved waste disposal facility. The excavation was backfilled with clean imported fill and contoured to surrounding grade. The surface soils at the Site were returned to approximate original grade.

Based on field observations and laboratory analytical results, no additional investigation or corrective action appears warranted at this time.

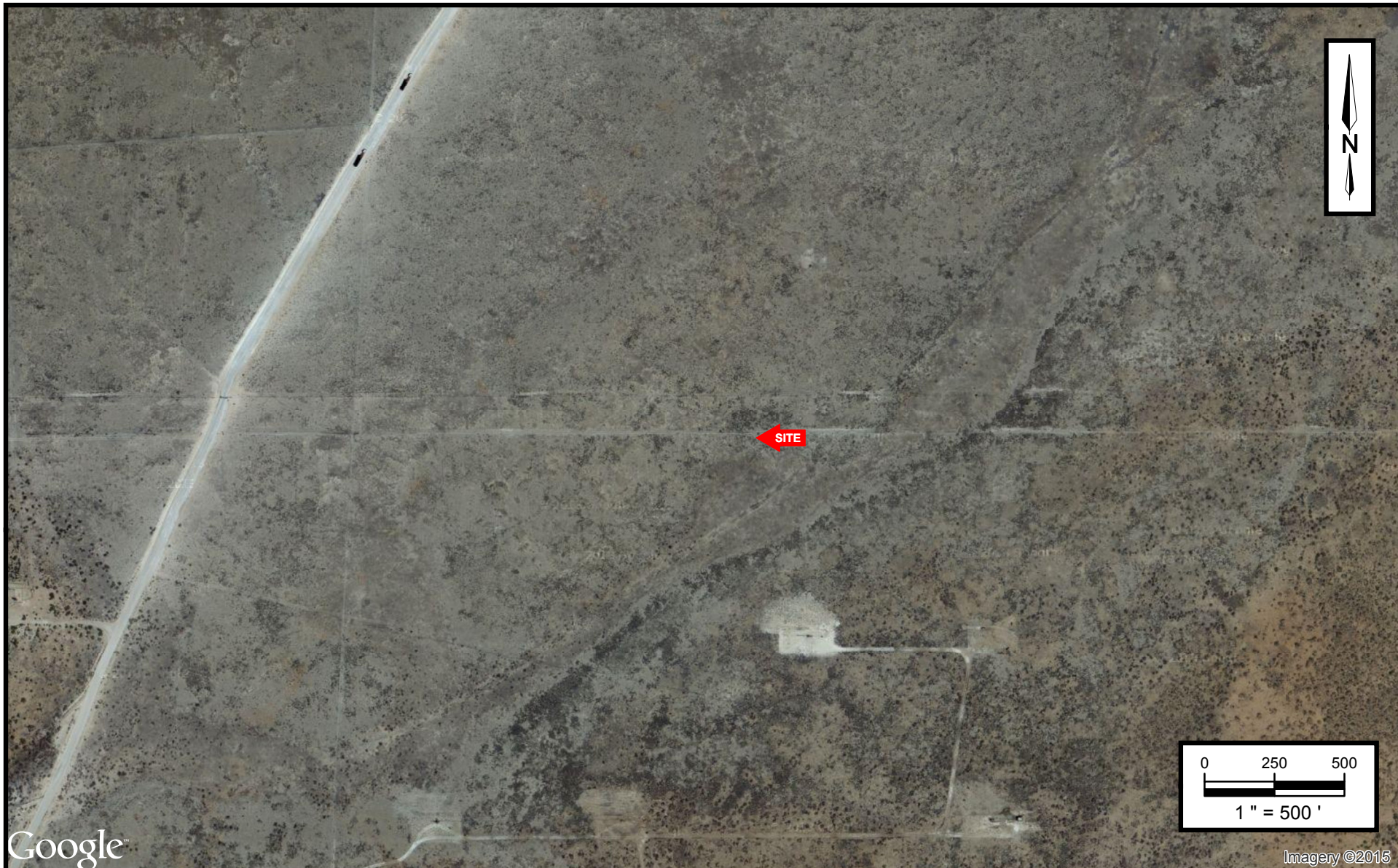


APPENDIX A

Figures



<p>Enterprise Field Services, LLC B-7 Gathering Lateral Release Eddy County, New Mexico 32.580222 N, 104.141698 W</p> <p>Project No. 7030714G094-001</p>	<p>Apex TITAN, Inc. 2351 W. Northwest Highway Dallas, Texas 75220 Phone: (214) 350-5469 www.apexcos.com A Subsidiary of Apex Companies, LLC</p>	<p>FIGURE 1 Topographic Map Angel Draw and Illinois Camp SE New Mexico Quadrangles 1985</p>
---	--	---



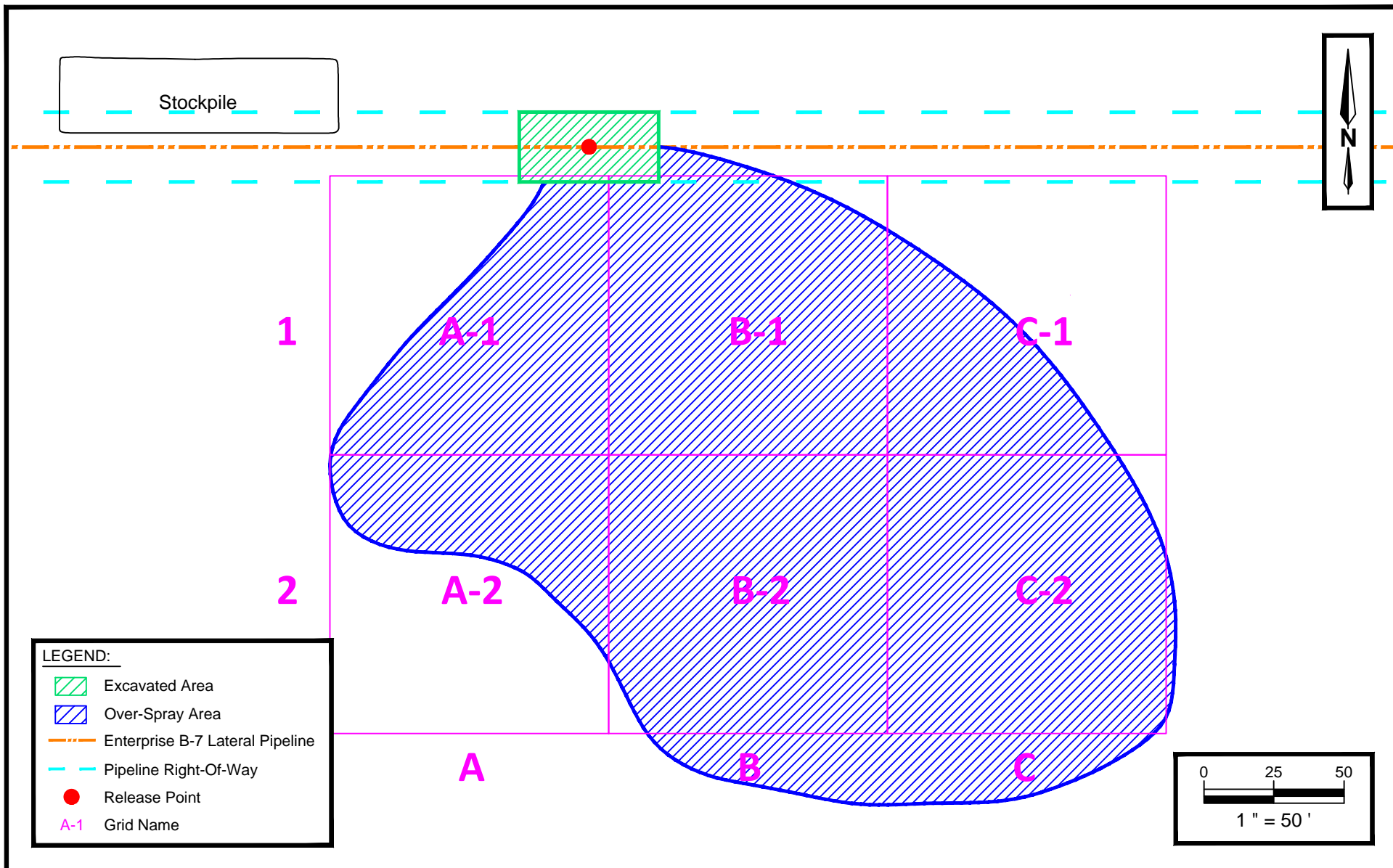
Enterprise Field Services, LLC
B-7 Gathering Lateral Release
Eddy County, New Mexico
32.580222 N, 104.141698 W

Project No. 7030714G094-001



Apex TITAN, Inc.
2351 W. Northwest Highway
Dallas, Texas 75220
Phone: (214) 350-5469
www.apexcos.com
A Subsidiary of Apex Companies, LLC

FIGURE 2
Site Vicinity Map
Aerial Photograph April 2013



Enterprise Field Services, LLC
B-7 Gathering Lateral Release
 Eddy County, New Mexico
 32.580222 N, 104.141698 W



Apex TITAN, Inc.

2351 W. Northwest Highway

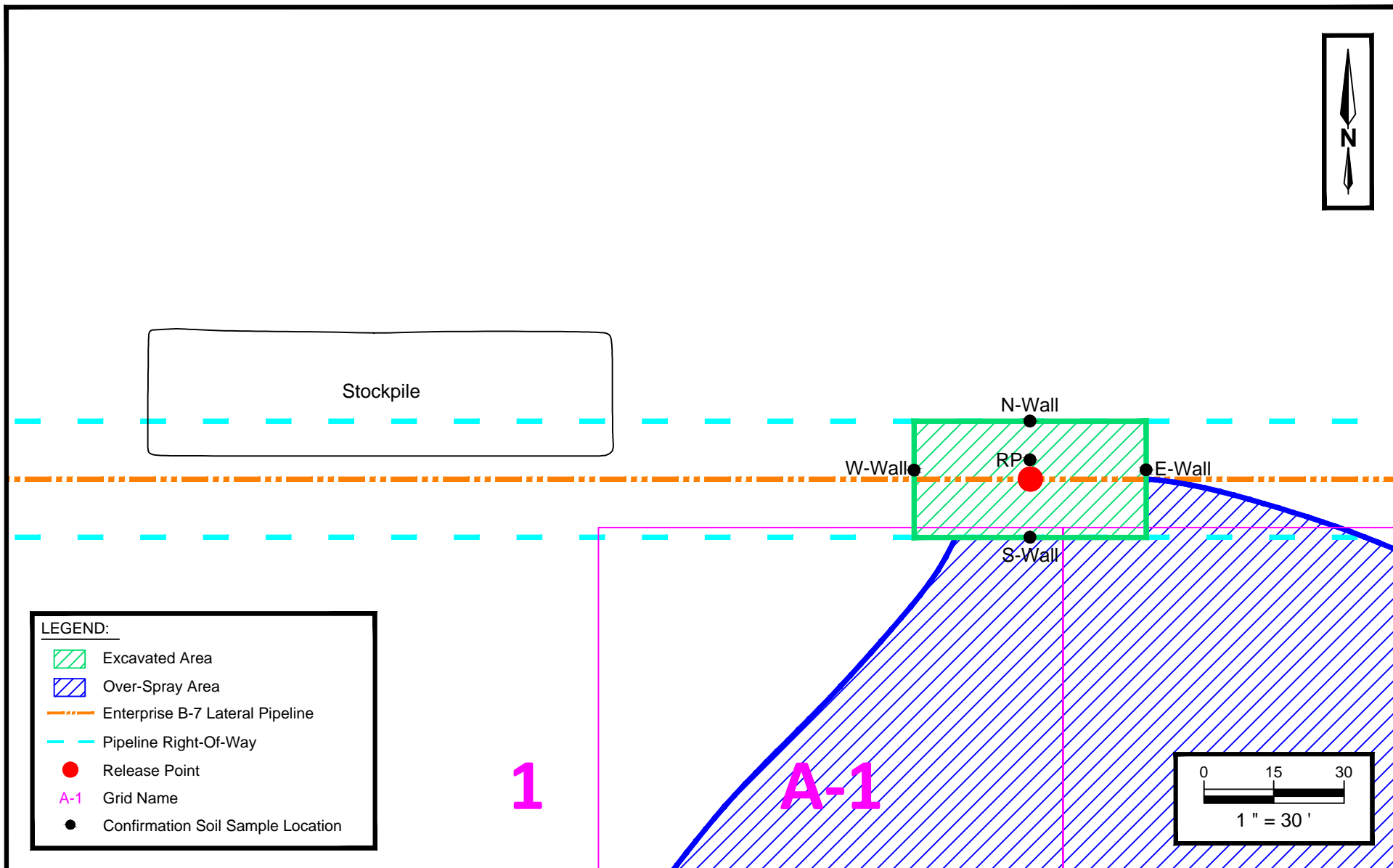
Dallas, Texas 75220

Phone: (214) 350-5469

www.apexcos.com

A Subsidiary of Apex Companies, LLC

Project No. 7030714G094-001



Enterprise Field Services, LLC
B-7 Gathering Lateral Release
 Eddy County, New Mexico
 32.580222 N, 104.141698 W

Project No. 7030714G094-001



Apex TITAN, Inc.

2351 W. Northwest Highway

Dallas, Texas 75220

Phone: (214) 350-5469

www.apexcos.com

A Subsidiary of Apex Companies, LLC

FIGURE 3B

Excavation Area Detail Map



APPENDIX B

Photographic Documentation



View of ruptured pipeline in excavation.



View looking south of overspray area.



View of overspray area, south of the open excavation.



View looking west of open excavation.



APPENDIX C

Analytical Tables

TABLE 1
SOIL SAMPLE ANALYTICAL RESULTS
B-7 Gathering Lateral Release

Sample I.D.	Sample Date	Sample Depth (feet bgs)	Benzene (mg/Kg)	Toluene (mg/Kg)	Ethylbenzene (mg/Kg)	Xylenes (mg/Kg)	BTEX (mg/Kg)	TPH GRO (mg/Kg)	TPH DRO (mg/Kg)	TPH GRO/DRO (mg/Kg)	Chlorides (mg/Kg)
New Mexico Oil Conservation Division (NMOCD) Recommended Remediation Action Levels (RRALs) (Total Ranking Score: 10)											
New Mexico Oil Conservation Division (NMOCD) Recommended Remediation Action Level			10	NE	NE	NE	50	NE	NE	1,000	1,000
CONFIRMATION SAMPLE ANALYTICAL RESULTS											
A-1	2/25/2015	0.5	<0.0200	<0.0200	<0.0200	<0.0200	<0.0800	<4.00	<50.0	<54.0	383
A-2	2/25/2015	0.5	<0.0200	<0.0200	<0.0200	<0.0200	<0.0800	<4.00	<50.0	<54.0	191
B-1	2/25/2015	0.5	<0.0200	<0.0200	<0.0200	<0.0200	<0.0800	<4.00	<50.0	<54.0	96.0
B-2	2/25/2015	0.5	<0.0200	<0.0200	<0.0200	<0.0200	<0.0800	<4.00	<50.0	<54.0	561
C-1	2/25/2015	0.5	<0.0200	<0.0200	0.0205	0.0513	0.0718	<4.00	<50.0	<54.0	187
C-2	2/25/2015	0.5	<0.0200	<0.0200	<0.0200	0.0212	0.0212	<4.00	<50.0	<54.0	<20.0
N-Wall	2/25/2015	8	0.0262	0.0356	<0.0200	0.0317	0.0935	<4.00	<50.0	<54.0	<20.0
W-Wall	2/25/2015	8	<0.0200	<0.0200	<0.0200	<0.0200	<0.0800	<4.00	<50.0	<54.0	<20.0
S-Wall	2/25/2015	8	<0.0200	<0.0200	<0.0200	<0.0200	<0.0800	<4.00	<50.0	<54.0	<20.0
E-Wall	2/25/2015	8	<0.0200	<0.0200	<0.0200	<0.0200	<0.0800	<4.00	<50.0	<54.0	<20.0
RP	2/25/2015	10	<0.0200	<0.0200	<0.0200	<0.0200	<0.0800	<4.00	<50.0	<54.0	<20.0
STOCKPILE SAMPLE ANALYTICAL RESULTS											
SP	2/25/2015	NA	<0.0200	<0.0200	<0.0200	<0.0200	<0.0800	<4.00	<50.0	<54.0	<20.0

mg/Kg- milligrams per Kilograms

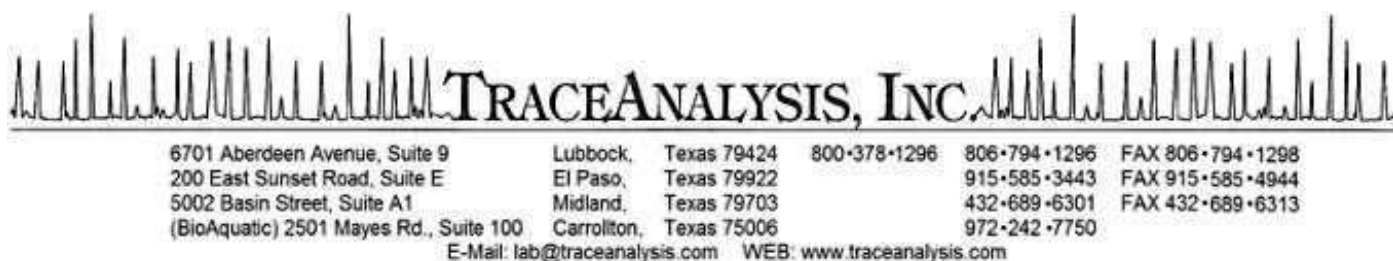
NA- Not Applicable

NE- Not Established



APPENDIX D

Laboratory Analytical Reports & Chain-of-Custody Documentation



Certifications

WBE HUB NCTRCA DBE NELAP DoD LELAP Kansas Oklahoma ISO 17025

Analytical and Quality Control Report

Karolanne Toby
APEX/Titan
2351 W. Northwest Hwy.
Suite 3321
Dallas, Tx, 75220

Report Date: March 5, 2015

Work Order: 15022632



Project Location: N/A
Project Name: B-7 LATERAL
Project Number: 7030714G094.001

Enclosed are the Analytical Report and Quality Control Report for the following sample(s) submitted to TraceAnalysis, Inc.

Sample	Description	Matrix	Date Taken	Time Taken	Date Received
387726	A-1	soil	2015-02-25	12:40	2015-02-26
387727	A-2	soil	2015-02-25	12:43	2015-02-26
387728	B-1	soil	2015-02-25	12:45	2015-02-26
387729	B-2	soil	2015-02-25	12:50	2015-02-26
387730	C-1	soil	2015-02-25	12:54	2015-02-26
387731	C-2	soil	2015-02-25	12:58	2015-02-26
387732	N-WALL	soil	2015-02-25	13:20	2015-02-26
387733	W-WALL	soil	2015-02-25	13:23	2015-02-26
387734	S-WALL	soil	2015-02-25	13:26	2015-02-26
387735	E-WALL	soil	2015-02-25	13:29	2015-02-26
387736	RP	soil	2015-02-25	13:33	2015-02-26
387737	SP	soil	2015-02-25	13:40	2015-02-26

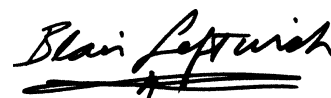
Notes

- **Work Order 15022632:** HOLD BKG 1&2

These results represent only the samples received in the laboratory. The Quality Control Report is generated on a batch

basis. All information contained in this report is for the analytical batch(es) in which your sample(s) were analyzed.

This report consists of a total of 41 pages and shall not be reproduced except in its entirety, without written approval of TraceAnalysis, Inc.

A handwritten signature in black ink, reading "Blair Leftwich". The signature is written in a cursive style with a prominent horizontal line underneath the name.

Dr. Blair Leftwich, Director
James Taylor, Assistant Director
Brian Pellam, Operations Manager

Report Contents

Case Narrative	5
Analytical Report	6
Sample 387726 (A-1)	6
Sample 387727 (A-2)	7
Sample 387728 (B-1)	8
Sample 387729 (B-2)	10
Sample 387730 (C-1)	11
Sample 387731 (C-2)	13
Sample 387732 (N-WALL)	14
Sample 387733 (W-WALL)	16
Sample 387734 (S-WALL)	17
Sample 387735 (E-WALL)	19
Sample 387736 (RP)	20
Sample 387737 (SP)	22
Method Blanks	24
QC Batch 119724 - Method Blank (1)	24
QC Batch 119733 - Method Blank (1)	24
QC Batch 119740 - Method Blank (1)	24
QC Batch 119761 - Method Blank (1)	24
QC Batch 119764 - Method Blank (1)	25
QC Batch 119789 - Method Blank (1)	25
QC Batch 119791 - Method Blank (1)	26
Laboratory Control Spikes	27
QC Batch 119724 - LCS (1)	27
QC Batch 119733 - LCS (1)	27
QC Batch 119740 - LCS (1)	27
QC Batch 119761 - LCS (1)	28
QC Batch 119764 - LCS (1)	28
QC Batch 119789 - LCS (1)	29
QC Batch 119791 - LCS (1)	30
Matrix Spikes	31
QC Batch 119724 - MS (1)	31
QC Batch 119733 - MS (1)	31
QC Batch 119740 - MS (1)	31
QC Batch 119761 - MS (1)	32
QC Batch 119764 - MS (1)	32
QC Batch 119789 - xMS (1)	33
QC Batch 119791 - MS (1)	34
Calibration Standards	35
QC Batch 119724 - CCV (1)	35
QC Batch 119724 - CCV (2)	35

QC Batch 119724 - CCV (3)	35
QC Batch 119733 - ICV (1)	35
QC Batch 119733 - CCV (1)	35
QC Batch 119740 - ICV (1)	36
QC Batch 119740 - CCV (1)	36
QC Batch 119761 - CCV (1)	36
QC Batch 119761 - CCV (2)	36
QC Batch 119761 - CCV (3)	37
QC Batch 119764 - CCV (1)	37
QC Batch 119764 - CCV (2)	37
QC Batch 119764 - CCV (3)	38
QC Batch 119789 - CCV (1)	38
QC Batch 119789 - CCV (2)	38
QC Batch 119789 - CCV (3)	38
QC Batch 119791 - CCV (1)	39
QC Batch 119791 - CCV (2)	39
QC Batch 119791 - CCV (3)	39
Appendix	40
Report Definitions	40
Laboratory Certifications	40
Standard Flags	40
Attachments	41

Case Narrative

Samples for project B-7 LATERAL were received by TraceAnalysis, Inc. on 2015-02-26 and assigned to work order 15022632. Samples for work order 15022632 were received intact at a temperature of 4.1 C.

Samples were analyzed for the following tests using their respective methods.

Test	Method	Prep Batch	Prep Date	QC Batch	Analysis Date
BTEX	S 8021B	101285	2015-03-03 at 14:50	119761	2015-03-04 at 12:14
BTEX	S 8021B	101317	2015-03-04 at 14:57	119789	2015-03-05 at 10:21
Chloride (Titration)	SM 4500-Cl B	101275	2015-03-03 at 12:51	119733	2015-03-03 at 12:53
Chloride (Titration)	SM 4500-Cl B	101282	2015-03-03 at 14:28	119740	2015-03-03 at 14:28
TPH DRO - NEW	S 8015 D	101249	2015-03-02 at 14:10	119724	2015-03-03 at 11:04
TPH GRO	S 8015 D	101285	2015-03-03 at 14:50	119764	2015-03-04 at 12:23
TPH GRO	S 8015 D	101317	2015-03-04 at 14:57	119791	2015-03-05 at 10:28

Results for these samples are reported on a wet weight basis unless data package indicates otherwise.

A matrix spike (MS) and matrix spike duplicate (MSD) sample is chosen at random from each preparation batch. The MS and MSD will indicate if a site specific matrix problem is occurring, however, it may not pertain to the samples for work order 15022632 since the sample was chosen at random. Therefore, the validity of the analytical data reported has been determined by the laboratory control sample (LCS) and the method blank (MB). These quality control measures are performed with each preparation batch to ensure data integrity.

All other exceptions associated with this report have been footnoted on the appropriate analytical page to assist in general data comprehension. Please contact the laboratory directly if there are any questions regarding this project.

Report Date: March 5, 2015
7030714G094.001

Work Order: 15022632
B-7 LATERAL

Page Number: 6 of 41
N/A

Analytical Report

Sample: 387726 - A-1

Laboratory: Midland
Analysis: BTEX
QC Batch: 119761
Prep Batch: 101285

Analytical Method: S 8021B
Date Analyzed: 2015-03-04
Sample Preparation: 2015-03-03

Prep Method: S 5035
Analyzed By: AK
Prepared By: AK

Parameter	Flag	Cert	RL Result	Units	Dilution	RL
Benzene	U	5	<0.0200	mg/Kg	1	0.0200
Toluene	U	5	<0.0200	mg/Kg	1	0.0200
Ethylbenzene	U	5	<0.0200	mg/Kg	1	0.0200
Xylene	U	5	<0.0200	mg/Kg	1	0.0200

Surrogate	Flag	Cert	Result	Units	Dilution	Spike Amount	Percent Recovery	Recovery Limits
Trifluorotoluene (TFT)			1.70	mg/Kg	1	2.00	85	70 - 130
4-Bromofluorobenzene (4-BFB)			2.11	mg/Kg	1	2.00	106	70 - 130

Sample: 387726 - A-1

Laboratory: Midland
Analysis: Chloride (Titration)
QC Batch: 119733
Prep Batch: 101275

Analytical Method: SM 4500-Cl B
Date Analyzed: 2015-03-03
Sample Preparation: 2015-03-03

Prep Method: N/A
Analyzed By: EM
Prepared By: EM

Parameter	Flag	Cert	RL Result	Units	Dilution	RL
Chloride	Qs		383	mg/Kg	5	4.00

Sample: 387726 - A-1

Laboratory: Midland
Analysis: TPH DRO - NEW
QC Batch: 119724
Prep Batch: 101249

Analytical Method: S 8015 D
Date Analyzed: 2015-03-03
Sample Preparation: 2015-03-02

Prep Method: N/A
Analyzed By: SC
Prepared By: SC

Parameter	Flag	Cert	RL Result	Units	Dilution	RL
DRO	U	5	<50.0	mg/Kg	1	50.0

Report Date: March 5, 2015
7030714G094.001

Work Order: 15022632
B-7 LATERAL

Page Number: 7 of 41
N/A

Surrogate	Flag	Cert	Result	Units	Dilution	Spike Amount	Percent Recovery	Recovery Limits
n-Tricosane			97.3	mg/Kg	1	100	97	70 - 130

Sample: 387726 - A-1

Laboratory: Midland
Analysis: TPH GRO
QC Batch: 119764
Prep Batch: 101285

Analytical Method: S 8015 D
Date Analyzed: 2015-03-04
Sample Preparation: 2015-03-03

Prep Method: S 5035
Analyzed By: AK
Prepared By: AK

Parameter	Flag	Cert	RL Result	Units	Dilution	RL
GRO	U	5	<4.00	mg/Kg	1	4.00

Surrogate	Flag	Cert	Result	Units	Dilution	Spike Amount	Percent Recovery	Recovery Limits
Trifluorotoluene (TFT)			1.70	mg/Kg	1	2.00	85	70 - 130
4-Bromofluorobenzene (4-BFB)			1.82	mg/Kg	1	2.00	91	70 - 130

Sample: 387727 - A-2

Laboratory: Midland
Analysis: BTEX
QC Batch: 119761
Prep Batch: 101285

Analytical Method: S 8021B
Date Analyzed: 2015-03-04
Sample Preparation: 2015-03-03

Prep Method: S 5035
Analyzed By: AK
Prepared By: AK

Parameter	Flag	Cert	RL Result	Units	Dilution	RL
Benzene	U	5	<0.0200	mg/Kg	1	0.0200
Toluene	U	5	<0.0200	mg/Kg	1	0.0200
Ethylbenzene	U	5	<0.0200	mg/Kg	1	0.0200
Xylene	U	5	<0.0200	mg/Kg	1	0.0200

Surrogate	Flag	Cert	Result	Units	Dilution	Spike Amount	Percent Recovery	Recovery Limits
Trifluorotoluene (TFT)			1.77	mg/Kg	1	2.00	88	70 - 130
4-Bromofluorobenzene (4-BFB)			2.13	mg/Kg	1	2.00	106	70 - 130

Report Date: March 5, 2015
7030714G094.001

Work Order: 15022632
B-7 LATERAL

Page Number: 8 of 41
N/A

Sample: 387727 - A-2

Laboratory:	Midland	Analytical Method:	SM 4500-Cl B	Prep Method:	N/A
Analysis:	Chloride (Titration)	Date Analyzed:	2015-03-03	Analyzed By:	EM
QC Batch:	119733	Sample Preparation:	2015-03-03	Prepared By:	EM
Prep Batch:	101275				

Parameter	Flag	Cert	RL Result	Units	Dilution	RL
Chloride	Qs		191	mg/Kg	5	4.00

Sample: 387727 - A-2

Laboratory:	Midland	Analytical Method:	S 8015 D	Prep Method:	N/A
Analysis:	TPH DRO - NEW	Date Analyzed:	2015-03-03	Analyzed By:	SC
QC Batch:	119724	Sample Preparation:	2015-03-02	Prepared By:	SC
Prep Batch:	101249				

Parameter	Flag	Cert	RL Result	Units	Dilution	RL
DRO	U	5	<50.0	mg/Kg	1	50.0

Surrogate	Flag	Cert	Result	Units	Dilution	Spike Amount	Percent Recovery	Recovery Limits
n-Tricosane			89.2	mg/Kg	1	100	89	70 - 130

Sample: 387727 - A-2

Laboratory:	Midland	Analytical Method:	S 8015 D	Prep Method:	S 5035
Analysis:	TPH GRO	Date Analyzed:	2015-03-04	Analyzed By:	AK
QC Batch:	119764	Sample Preparation:	2015-03-03	Prepared By:	AK
Prep Batch:	101285				

Parameter	Flag	Cert	RL Result	Units	Dilution	RL
GRO	U	5	<4.00	mg/Kg	1	4.00

Surrogate	Flag	Cert	Result	Units	Dilution	Spike Amount	Percent Recovery	Recovery Limits
Trifluorotoluene (TFT)			1.76	mg/Kg	1	2.00	88	70 - 130
4-Bromofluorobenzene (4-BFB)			1.86	mg/Kg	1	2.00	93	70 - 130

Report Date: March 5, 2015
7030714G094.001

Work Order: 15022632
B-7 LATERAL

Page Number: 9 of 41
N/A

Sample: 387728 - B-1

Laboratory: Midland
Analysis: BTEX
QC Batch: 119761
Prep Batch: 101285

Analytical Method: S 8021B
Date Analyzed: 2015-03-04
Sample Preparation: 2015-03-03

Prep Method: S 5035
Analyzed By: AK
Prepared By: AK

Parameter	Flag	Cert	RL Result	Units	Dilution	RL
Benzene	U	5	<0.0200	mg/Kg	1	0.0200
Toluene	U	5	<0.0200	mg/Kg	1	0.0200
Ethylbenzene	U	5	<0.0200	mg/Kg	1	0.0200
Xylene	U	5	<0.0200	mg/Kg	1	0.0200

Surrogate	Flag	Cert	Result	Units	Dilution	Spike Amount	Percent Recovery	Recovery Limits
Trifluorotoluene (TFT)			1.79	mg/Kg	1	2.00	90	70 - 130
4-Bromofluorobenzene (4-BFB)			2.11	mg/Kg	1	2.00	106	70 - 130

Sample: 387728 - B-1

Laboratory: Midland
Analysis: Chloride (Titration)
QC Batch: 119733
Prep Batch: 101275

Analytical Method: SM 4500-Cl B
Date Analyzed: 2015-03-03
Sample Preparation: 2015-03-03

Prep Method: N/A
Analyzed By: EM
Prepared By: EM

Parameter	Flag	Cert	RL Result	Units	Dilution	RL
Chloride	Qs		96.0	mg/Kg	5	4.00

Sample: 387728 - B-1

Laboratory: Midland
Analysis: TPH DRO - NEW
QC Batch: 119724
Prep Batch: 101249

Analytical Method: S 8015 D
Date Analyzed: 2015-03-03
Sample Preparation: 2015-03-02

Prep Method: N/A
Analyzed By: SC
Prepared By: SC

Parameter	Flag	Cert	RL Result	Units	Dilution	RL
DRO	U	5	<50.0	mg/Kg	1	50.0

Surrogate	Flag	Cert	Result	Units	Dilution	Spike Amount	Percent Recovery	Recovery Limits
n-Tricosane			92.2	mg/Kg	1	100	92	70 - 130

Report Date: March 5, 2015
7030714G094.001

Work Order: 15022632
B-7 LATERAL

Page Number: 10 of 41
N/A

Sample: 387728 - B-1

Laboratory:	Midland	Analytical Method:	S 8015 D	Prep Method:	S 5035
Analysis:	TPH GRO	Date Analyzed:	2015-03-04	Analyzed By:	AK
QC Batch:	119764	Sample Preparation:	2015-03-03	Prepared By:	AK
Prep Batch:	101285				

Parameter	Flag	Cert	RL Result	Units	Dilution	RL
GRO	U	5	<4.00	mg/Kg	1	4.00

Surrogate	Flag	Cert	Result	Units	Dilution	Spike Amount	Percent Recovery	Recovery Limits
Trifluorotoluene (TFT)			1.78	mg/Kg	1	2.00	89	70 - 130
4-Bromofluorobenzene (4-BFB)			1.84	mg/Kg	1	2.00	92	70 - 130

Sample: 387729 - B-2

Laboratory:	Midland	Analytical Method:	S 8021B	Prep Method:	S 5035
Analysis:	BTEX	Date Analyzed:	2015-03-04	Analyzed By:	AK
QC Batch:	119761	Sample Preparation:	2015-03-03	Prepared By:	AK
Prep Batch:	101285				

Parameter	Flag	Cert	RL Result	Units	Dilution	RL
Benzene	U	5	<0.0200	mg/Kg	1	0.0200
Toluene	U	5	<0.0200	mg/Kg	1	0.0200
Ethylbenzene	U	5	<0.0200	mg/Kg	1	0.0200
Xylene	U	5	<0.0200	mg/Kg	1	0.0200

Surrogate	Flag	Cert	Result	Units	Dilution	Spike Amount	Percent Recovery	Recovery Limits
Trifluorotoluene (TFT)			1.80	mg/Kg	1	2.00	90	70 - 130
4-Bromofluorobenzene (4-BFB)			2.14	mg/Kg	1	2.00	107	70 - 130

Sample: 387729 - B-2

Laboratory:	Midland	Analytical Method:	SM 4500-Cl B	Prep Method:	N/A
Analysis:	Chloride (Titration)	Date Analyzed:	2015-03-03	Analyzed By:	EM
QC Batch:	119740	Sample Preparation:	2015-03-03	Prepared By:	EM
Prep Batch:	101282				

continued ...

Report Date: March 5, 2015
7030714G094.001

Work Order: 15022632
B-7 LATERAL

Page Number: 11 of 41
N/A

sample 387729 continued ...

Parameter	Flag	Cert	RL Result	Units	Dilution	RL
Parameter	Flag	Cert	RL Result	Units	Dilution	RL
Chloride	Qs		561	mg/Kg	5	4.00

Sample: 387729 - B-2

Laboratory:	Midland				
Analysis:	TPH DRO - NEW	Analytical Method:	S 8015 D	Prep Method:	N/A
QC Batch:	119724	Date Analyzed:	2015-03-03	Analyzed By:	SC
Prep Batch:	101249	Sample Preparation:	2015-03-02	Prepared By:	SC

Parameter	Flag	Cert	RL Result	Units	Dilution	RL
DRO	U	5	<50.0	mg/Kg	1	50.0

Surrogate	Flag	Cert	Result	Units	Dilution	Spike Amount	Percent Recovery	Recovery Limits
n-Tricosane			88.9	mg/Kg	1	100	89	70 - 130

Sample: 387729 - B-2

Laboratory:	Midland				
Analysis:	TPH GRO	Analytical Method:	S 8015 D	Prep Method:	S 5035
QC Batch:	119764	Date Analyzed:	2015-03-04	Analyzed By:	AK
Prep Batch:	101285	Sample Preparation:	2015-03-03	Prepared By:	AK

Parameter	Flag	Cert	RL Result	Units	Dilution	RL
GRO	U	5	<4.00	mg/Kg	1	4.00

Surrogate	Flag	Cert	Result	Units	Dilution	Spike Amount	Percent Recovery	Recovery Limits
Trifluorotoluene (TFT)			1.79	mg/Kg	1	2.00	90	70 - 130
4-Bromofluorobenzene (4-BFB)			1.86	mg/Kg	1	2.00	93	70 - 130

Report Date: March 5, 2015
7030714G094.001

Work Order: 15022632
B-7 LATERAL

Page Number: 12 of 41
N/A

Sample: 387730 - C-1

Laboratory: Midland
Analysis: BTEX
QC Batch: 119761
Prep Batch: 101285

Analytical Method: S 8021B
Date Analyzed: 2015-03-04
Sample Preparation: 2015-03-03

Prep Method: S 5035
Analyzed By: AK
Prepared By: AK

Parameter	Flag	Cert	RL Result	Units	Dilution	RL
Benzene	U	5	<0.0200	mg/Kg	1	0.0200
Toluene		5	<0.0200	mg/Kg	1	0.0200
Ethylbenzene		5	0.0205	mg/Kg	1	0.0200
Xylene		5	0.0513	mg/Kg	1	0.0200

Surrogate	Flag	Cert	Result	Units	Dilution	Spike Amount	Percent Recovery	Recovery Limits
Trifluorotoluene (TFT)			1.70	mg/Kg	1	2.00	85	70 - 130
4-Bromofluorobenzene (4-BFB)			2.17	mg/Kg	1	2.00	108	70 - 130

Sample: 387730 - C-1

Laboratory: Midland
Analysis: Chloride (Titration)
QC Batch: 119740
Prep Batch: 101282

Analytical Method: SM 4500-Cl B
Date Analyzed: 2015-03-03
Sample Preparation: 2015-03-03

Prep Method: N/A
Analyzed By: EM
Prepared By: EM

Parameter	Flag	Cert	RL Result	Units	Dilution	RL
Chloride	Qs		187	mg/Kg	1	4.00

Sample: 387730 - C-1

Laboratory: Midland
Analysis: TPH DRO - NEW
QC Batch: 119724
Prep Batch: 101249

Analytical Method: S 8015 D
Date Analyzed: 2015-03-03
Sample Preparation: 2015-03-02

Prep Method: N/A
Analyzed By: SC
Prepared By: SC

Parameter	Flag	Cert	RL Result	Units	Dilution	RL
DRO	U	5	<50.0	mg/Kg	1	50.0

Surrogate	Flag	Cert	Result	Units	Dilution	Spike Amount	Percent Recovery	Recovery Limits
n-Tricosane			98.5	mg/Kg	1	100	98	70 - 130

Report Date: March 5, 2015
7030714G094.001

Work Order: 15022632
B-7 LATERAL

Page Number: 13 of 41
N/A

Sample: 387730 - C-1

Laboratory:	Midland	Analytical Method:	S 8015 D	Prep Method:	S 5035
Analysis:	TPH GRO	Date Analyzed:	2015-03-04	Analyzed By:	AK
QC Batch:	119764	Sample Preparation:	2015-03-03	Prepared By:	AK
Prep Batch:	101285				

Parameter	Flag	Cert	RL Result	Units	Dilution	RL
GRO	u	s	<4.00	mg/Kg	1	4.00

Surrogate	Flag	Cert	Result	Units	Dilution	Spike Amount	Percent Recovery	Recovery Limits
Trifluorotoluene (TFT)			1.79	mg/Kg	1	2.00	90	70 - 130
4-Bromofluorobenzene (4-BFB)			2.00	mg/Kg	1	2.00	100	70 - 130

Sample: 387731 - C-2

Laboratory:	Midland	Analytical Method:	S 8021B	Prep Method:	S 5035
Analysis:	BTEX	Date Analyzed:	2015-03-04	Analyzed By:	AK
QC Batch:	119761	Sample Preparation:	2015-03-03	Prepared By:	AK
Prep Batch:	101285				

Parameter	Flag	Cert	RL Result	Units	Dilution	RL
Benzene	u	s	<0.0200	mg/Kg	1	0.0200
Toluene		s	<0.0200	mg/Kg	1	0.0200
Ethylbenzene	u	s	<0.0200	mg/Kg	1	0.0200
Xylene		s	0.0212	mg/Kg	1	0.0200

Surrogate	Flag	Cert	Result	Units	Dilution	Spike Amount	Percent Recovery	Recovery Limits
Trifluorotoluene (TFT)			1.72	mg/Kg	1	2.00	86	70 - 130
4-Bromofluorobenzene (4-BFB)			2.11	mg/Kg	1	2.00	106	70 - 130

Sample: 387731 - C-2

Laboratory:	Midland	Analytical Method:	SM 4500-Cl B	Prep Method:	N/A
Analysis:	Chloride (Titration)	Date Analyzed:	2015-03-03	Analyzed By:	EM
QC Batch:	119740	Sample Preparation:	2015-03-03	Prepared By:	EM
Prep Batch:	101282				

continued ...

Report Date: March 5, 2015
7030714G094.001

Work Order: 15022632
B-7 LATERAL

Page Number: 14 of 41
N/A

sample 387731 continued ...

Parameter	Flag	Cert	RL Result	Units	Dilution	RL
Parameter	Flag	Cert	RL Result	Units	Dilution	RL
Chloride	Qs,U		<20.0	mg/Kg	5	4.00

Sample: 387731 - C-2

Laboratory:	Midland				
Analysis:	TPH DRO - NEW	Analytical Method:	S 8015 D	Prep Method:	N/A
QC Batch:	119724	Date Analyzed:	2015-03-03	Analyzed By:	SC
Prep Batch:	101249	Sample Preparation:	2015-03-02	Prepared By:	SC

Parameter	Flag	Cert	RL Result	Units	Dilution	RL
DRO	U	5	<50.0	mg/Kg	1	50.0

Surrogate	Flag	Cert	Result	Units	Dilution	Spike Amount	Percent Recovery	Recovery Limits
n-Tricosane			91.6	mg/Kg	1	100	92	70 - 130

Sample: 387731 - C-2

Laboratory:	Midland				
Analysis:	TPH GRO	Analytical Method:	S 8015 D	Prep Method:	S 5035
QC Batch:	119764	Date Analyzed:	2015-03-04	Analyzed By:	AK
Prep Batch:	101285	Sample Preparation:	2015-03-03	Prepared By:	AK

Parameter	Flag	Cert	RL Result	Units	Dilution	RL
GRO	U	5	<4.00	mg/Kg	1	4.00

Surrogate	Flag	Cert	Result	Units	Dilution	Spike Amount	Percent Recovery	Recovery Limits
Trifluorotoluene (TFT)			1.77	mg/Kg	1	2.00	88	70 - 130
4-Bromofluorobenzene (4-BFB)			1.90	mg/Kg	1	2.00	95	70 - 130

Report Date: March 5, 2015
7030714G094.001

Work Order: 15022632
B-7 LATERAL

Page Number: 15 of 41
N/A

Sample: 387732 - N-WALL

Laboratory: Midland

Analysis: BTEX

QC Batch: 119761

Prep Batch: 101285

Analytical Method: S 8021B

Date Analyzed: 2015-03-04

Sample Preparation: 2015-03-03

Prep Method: S 5035

Analyzed By: AK

Prepared By: AK

Parameter	Flag	Cert	RL Result	Units	Dilution	RL
Benzene		5	0.0262	mg/Kg	1	0.0200
Toluene		5	0.0356	mg/Kg	1	0.0200
Ethylbenzene	U	5	<0.0200	mg/Kg	1	0.0200
Xylene		5	0.0317	mg/Kg	1	0.0200

Surrogate	Flag	Cert	Result	Units	Dilution	Spike Amount	Percent Recovery	Recovery Limits
Trifluorotoluene (TFT)			1.64	mg/Kg	1	2.00	82	70 - 130
4-Bromofluorobenzene (4-BFB)			1.97	mg/Kg	1	2.00	98	70 - 130

Sample: 387732 - N-WALL

Laboratory: Midland

Analysis: Chloride (Titration)

QC Batch: 119740

Prep Batch: 101282

Analytical Method: SM 4500-Cl B

Date Analyzed: 2015-03-03

Sample Preparation: 2015-03-03

Prep Method: N/A

Analyzed By: EM

Prepared By: EM

Parameter	Flag	Cert	RL Result	Units	Dilution	RL
Chloride	Qs,U		<20.0	mg/Kg	5	4.00

Sample: 387732 - N-WALL

Laboratory: Midland

Analysis: TPH DRO - NEW

QC Batch: 119724

Prep Batch: 101249

Analytical Method: S 8015 D

Date Analyzed: 2015-03-03

Sample Preparation: 2015-03-02

Prep Method: N/A

Analyzed By: SC

Prepared By: SC

Parameter	Flag	Cert	RL Result	Units	Dilution	RL
DRO	U	5	<50.0	mg/Kg	1	50.0

Surrogate	Flag	Cert	Result	Units	Dilution	Spike Amount	Percent Recovery	Recovery Limits
n-Tricosane		104		mg/Kg	1	100	104	70 - 130

Report Date: March 5, 2015
7030714G094.001

Work Order: 15022632
B-7 LATERAL

Page Number: 16 of 41
N/A

Sample: 387732 - N-WALL

Laboratory:	Midland	Analytical Method:	S 8015 D	Prep Method:	S 5035
Analysis:	TPH GRO	Date Analyzed:	2015-03-04	Analyzed By:	AK
QC Batch:	119764	Sample Preparation:	2015-03-03	Prepared By:	AK
Prep Batch:	101285				

Parameter	Flag	Cert	RL Result	Units	Dilution	RL
GRO	U	5	<4.00	mg/Kg	1	4.00

Surrogate	Flag	Cert	Result	Units	Dilution	Spike Amount	Percent Recovery	Recovery Limits
Trifluorotoluene (TFT)			1.64	mg/Kg	1	2.00	82	70 - 130
4-Bromofluorobenzene (4-BFB)			1.77	mg/Kg	1	2.00	88	70 - 130

Sample: 387733 - W-WALL

Laboratory:	Midland	Analytical Method:	S 8021B	Prep Method:	S 5035
Analysis:	BTEX	Date Analyzed:	2015-03-04	Analyzed By:	AK
QC Batch:	119761	Sample Preparation:	2015-03-03	Prepared By:	AK
Prep Batch:	101285				

Parameter	Flag	Cert	RL Result	Units	Dilution	RL
Benzene	U	5	<0.0200	mg/Kg	1	0.0200
Toluene	U	5	<0.0200	mg/Kg	1	0.0200
Ethylbenzene	U	5	<0.0200	mg/Kg	1	0.0200
Xylene	U	5	<0.0200	mg/Kg	1	0.0200

Surrogate	Flag	Cert	Result	Units	Dilution	Spike Amount	Percent Recovery	Recovery Limits
Trifluorotoluene (TFT)			1.74	mg/Kg	1	2.00	87	70 - 130
4-Bromofluorobenzene (4-BFB)			2.10	mg/Kg	1	2.00	105	70 - 130

Sample: 387733 - W-WALL

Laboratory:	Midland	Analytical Method:	SM 4500-Cl B	Prep Method:	N/A
Analysis:	Chloride (Titration)	Date Analyzed:	2015-03-03	Analyzed By:	EM
QC Batch:	119740	Sample Preparation:	2015-03-03	Prepared By:	EM
Prep Batch:	101282				

continued ...

Report Date: March 5, 2015
7030714G094.001

Work Order: 15022632
B-7 LATERAL

Page Number: 17 of 41
N/A

sample 387733 continued ...

Parameter	Flag	Cert	RL Result	Units	Dilution	RL
Parameter	Flag	Cert	RL Result	Units	Dilution	RL
Chloride	Qs,U		<20.0	mg/Kg	5	4.00

Sample: 387733 - W-WALL

Laboratory:	Midland				
Analysis:	TPH DRO - NEW	Analytical Method:	S 8015 D	Prep Method:	N/A
QC Batch:	119724	Date Analyzed:	2015-03-03	Analyzed By:	SC
Prep Batch:	101249	Sample Preparation:	2015-03-02	Prepared By:	SC

Parameter	Flag	Cert	RL Result	Units	Dilution	RL
DRO	U	5	<50.0	mg/Kg	1	50.0

Surrogate	Flag	Cert	Result	Units	Dilution	Spike Amount	Percent Recovery	Recovery Limits
n-Tricosane			73.1	mg/Kg	1	100	73	70 - 130

Sample: 387733 - W-WALL

Laboratory:	Midland				
Analysis:	TPH GRO	Analytical Method:	S 8015 D	Prep Method:	S 5035
QC Batch:	119764	Date Analyzed:	2015-03-04	Analyzed By:	AK
Prep Batch:	101285	Sample Preparation:	2015-03-03	Prepared By:	AK

Parameter	Flag	Cert	RL Result	Units	Dilution	RL
GRO	U	5	<4.00	mg/Kg	1	4.00

Surrogate	Flag	Cert	Result	Units	Dilution	Spike Amount	Percent Recovery	Recovery Limits
Trifluorotoluene (TFT)			1.75	mg/Kg	1	2.00	88	70 - 130
4-Bromofluorobenzene (4-BFB)			1.86	mg/Kg	1	2.00	93	70 - 130

Report Date: March 5, 2015
7030714G094.001

Work Order: 15022632
B-7 LATERAL

Page Number: 18 of 41
N/A

Sample: 387734 - S-WALL

Laboratory: Midland

Analysis: BTEX

QC Batch: 119761

Prep Batch: 101285

Analytical Method: S 8021B

Date Analyzed: 2015-03-04

Sample Preparation: 2015-03-03

Prep Method: S 5035

Analyzed By: AK

Prepared By: AK

Parameter	Flag	Cert	RL Result	Units	Dilution	RL
Benzene	U	5	<0.0200	mg/Kg	1	0.0200
Toluene	U	5	<0.0200	mg/Kg	1	0.0200
Ethylbenzene	U	5	<0.0200	mg/Kg	1	0.0200
Xylene	U	5	<0.0200	mg/Kg	1	0.0200

Surrogate	Flag	Cert	Result	Units	Dilution	Spike Amount	Percent Recovery	Recovery Limits
Trifluorotoluene (TFT)			1.63	mg/Kg	1	2.00	82	70 - 130
4-Bromofluorobenzene (4-BFB)			2.11	mg/Kg	1	2.00	106	70 - 130

Sample: 387734 - S-WALL

Laboratory: Midland

Analysis: Chloride (Titration)

QC Batch: 119740

Prep Batch: 101282

Analytical Method: SM 4500-Cl B

Date Analyzed: 2015-03-03

Sample Preparation: 2015-03-03

Prep Method: N/A

Analyzed By: EM

Prepared By: EM

Parameter	Flag	Cert	RL Result	Units	Dilution	RL
Chloride	Qs,U		<20.0	mg/Kg	5	4.00

Sample: 387734 - S-WALL

Laboratory: Midland

Analysis: TPH DRO - NEW

QC Batch: 119724

Prep Batch: 101249

Analytical Method: S 8015 D

Date Analyzed: 2015-03-03

Sample Preparation: 2015-03-02

Prep Method: N/A

Analyzed By: SC

Prepared By: SC

Parameter	Flag	Cert	RL Result	Units	Dilution	RL
DRO	U	5	<50.0	mg/Kg	1	50.0

Surrogate	Flag	Cert	Result	Units	Dilution	Spike Amount	Percent Recovery	Recovery Limits
n-Tricosane			91.1	mg/Kg	1	100	91	70 - 130

Report Date: March 5, 2015
7030714G094.001

Work Order: 15022632
B-7 LATERAL

Page Number: 19 of 41
N/A

Sample: 387734 - S-WALL

Laboratory:	Midland	Analytical Method:	S 8015 D	Prep Method:	S 5035
Analysis:	TPH GRO	Date Analyzed:	2015-03-04	Analyzed By:	AK
QC Batch:	119764	Sample Preparation:	2015-03-03	Prepared By:	AK
Prep Batch:	101285				

Parameter	Flag	Cert	RL Result	Units	Dilution	RL
GRO	U	5	<4.00	mg/Kg	1	4.00

Surrogate	Flag	Cert	Result	Units	Dilution	Spike Amount	Percent Recovery	Recovery Limits
Trifluorotoluene (TFT)			1.74	mg/Kg	1	2.00	87	70 - 130
4-Bromofluorobenzene (4-BFB)			1.86	mg/Kg	1	2.00	93	70 - 130

Sample: 387735 - E-WALL

Laboratory:	Midland	Analytical Method:	S 8021B	Prep Method:	S 5035
Analysis:	BTEX	Date Analyzed:	2015-03-04	Analyzed By:	AK
QC Batch:	119761	Sample Preparation:	2015-03-03	Prepared By:	AK
Prep Batch:	101285				

Parameter	Flag	Cert	RL Result	Units	Dilution	RL
Benzene	U	5	<0.0200	mg/Kg	1	0.0200
Toluene	U	5	<0.0200	mg/Kg	1	0.0200
Ethylbenzene	U	5	<0.0200	mg/Kg	1	0.0200
Xylene	U	5	<0.0200	mg/Kg	1	0.0200

Surrogate	Flag	Cert	Result	Units	Dilution	Spike Amount	Percent Recovery	Recovery Limits
Trifluorotoluene (TFT)			1.84	mg/Kg	1	2.00	92	70 - 130
4-Bromofluorobenzene (4-BFB)			2.27	mg/Kg	1	2.00	114	70 - 130

Sample: 387735 - E-WALL

Laboratory:	Midland	Analytical Method:	SM 4500-Cl B	Prep Method:	N/A
Analysis:	Chloride (Titration)	Date Analyzed:	2015-03-03	Analyzed By:	EM
QC Batch:	119740	Sample Preparation:	2015-03-03	Prepared By:	EM
Prep Batch:	101282				

continued ...

Report Date: March 5, 2015
7030714G094.001

Work Order: 15022632
B-7 LATERAL

Page Number: 20 of 41
N/A

sample 387735 continued ...

Parameter	Flag	Cert	RL Result	Units	Dilution	RL
Parameter	Flag	Cert	RL Result	Units	Dilution	RL
Chloride	Qs,U		<20.0	mg/Kg	5	4.00

Sample: 387735 - E-WALL

Laboratory:	Midland			
Analysis:	TPH DRO - NEW	Analytical Method:	S 8015 D	Prep Method: N/A
QC Batch:	119724	Date Analyzed:	2015-03-03	Analyzed By: SC
Prep Batch:	101249	Sample Preparation:	2015-03-02	Prepared By: SC

Parameter	Flag	Cert	RL Result	Units	Dilution	RL
DRO	U	5	<50.0	mg/Kg	1	50.0

Surrogate	Flag	Cert	Result	Units	Dilution	Spike Amount	Percent Recovery	Recovery Limits
n-Tricosane			91.1	mg/Kg	1	100	91	70 - 130

Sample: 387735 - E-WALL

Laboratory:	Midland			
Analysis:	TPH GRO	Analytical Method:	S 8015 D	Prep Method: S 5035
QC Batch:	119764	Date Analyzed:	2015-03-04	Analyzed By: AK
Prep Batch:	101285	Sample Preparation:	2015-03-03	Prepared By: AK

Parameter	Flag	Cert	RL Result	Units	Dilution	RL
GRO	U	5	<4.00	mg/Kg	1	4.00

Surrogate	Flag	Cert	Result	Units	Dilution	Spike Amount	Percent Recovery	Recovery Limits
Trifluorotoluene (TFT)			1.86	mg/Kg	1	2.00	93	70 - 130
4-Bromofluorobenzene (4-BFB)			1.97	mg/Kg	1	2.00	98	70 - 130

Report Date: March 5, 2015
7030714G094.001

Work Order: 15022632
B-7 LATERAL

Page Number: 21 of 41
N/A

Sample: 387736 - RP

Laboratory: Midland

Analysis: BTEX

QC Batch: 119789

Prep Batch: 101317

Analytical Method: S 8021B

Date Analyzed: 2015-03-05

Sample Preparation: 2015-03-04

Prep Method: S 5035

Analyzed By: AK

Prepared By: AK

Parameter	Flag	Cert	RL Result	Units	Dilution	RL
Benzene	U	5	<0.0200	mg/Kg	1	0.0200
Toluene	U	5	<0.0200	mg/Kg	1	0.0200
Ethylbenzene	U	5	<0.0200	mg/Kg	1	0.0200
Xylene	U	5	<0.0200	mg/Kg	1	0.0200

Surrogate	Flag	Cert	Result	Units	Dilution	Spike Amount	Percent Recovery	Recovery Limits
Trifluorotoluene (TFT)			1.79	mg/Kg	1	2.00	90	70 - 130
4-Bromofluorobenzene (4-BFB)			2.20	mg/Kg	1	2.00	110	70 - 130

Sample: 387736 - RP

Laboratory: Midland

Analysis: Chloride (Titration)

QC Batch: 119740

Prep Batch: 101282

Analytical Method: SM 4500-Cl B

Date Analyzed: 2015-03-03

Sample Preparation: 2015-03-03

Prep Method: N/A

Analyzed By: EM

Prepared By: EM

Parameter	Flag	Cert	RL Result	Units	Dilution	RL
Chloride	Qs,U		<20.0	mg/Kg	5	4.00

Sample: 387736 - RP

Laboratory: Midland

Analysis: TPH DRO - NEW

QC Batch: 119724

Prep Batch: 101249

Analytical Method: S 8015 D

Date Analyzed: 2015-03-03

Sample Preparation: 2015-03-02

Prep Method: N/A

Analyzed By: SC

Prepared By: SC

Parameter	Flag	Cert	RL Result	Units	Dilution	RL
DRO	U	5	<50.0	mg/Kg	1	50.0

Surrogate	Flag	Cert	Result	Units	Dilution	Spike Amount	Percent Recovery	Recovery Limits
n-Tricosane			90.2	mg/Kg	1	100	90	70 - 130

Report Date: March 5, 2015
7030714G094.001

Work Order: 15022632
B-7 LATERAL

Page Number: 22 of 41
N/A

Sample: 387736 - RP

Laboratory:	Midland	Analytical Method:	S 8015 D	Prep Method:	S 5035
Analysis:	TPH GRO	Date Analyzed:	2015-03-05	Analyzed By:	AK
QC Batch:	119791	Sample Preparation:	2015-03-04	Prepared By:	AK
Prep Batch:	101317				

Parameter	Flag	Cert	RL Result	Units	Dilution	RL
GRO	u	s	<4.00	mg/Kg	1	4.00

Surrogate	Flag	Cert	Result	Units	Dilution	Spike Amount	Percent Recovery	Recovery Limits
Trifluorotoluene (TFT)			1.81	mg/Kg	1	2.00	90	70 - 130
4-Bromofluorobenzene (4-BFB)			1.94	mg/Kg	1	2.00	97	70 - 130

Sample: 387737 - SP

Laboratory:	Midland	Analytical Method:	S 8021B	Prep Method:	S 5035
Analysis:	BTEX	Date Analyzed:	2015-03-05	Analyzed By:	AK
QC Batch:	119789	Sample Preparation:	2015-03-04	Prepared By:	AK
Prep Batch:	101317				

Parameter	Flag	Cert	RL Result	Units	Dilution	RL
Benzene	u	s	<0.0200	mg/Kg	1	0.0200
Toluene	u	s	<0.0200	mg/Kg	1	0.0200
Ethylbenzene	u	s	<0.0200	mg/Kg	1	0.0200
Xylene	u	s	<0.0200	mg/Kg	1	0.0200

Surrogate	Flag	Cert	Result	Units	Dilution	Spike Amount	Percent Recovery	Recovery Limits
Trifluorotoluene (TFT)			1.72	mg/Kg	1	2.00	86	70 - 130
4-Bromofluorobenzene (4-BFB)			2.12	mg/Kg	1	2.00	106	70 - 130

Sample: 387737 - SP

Laboratory:	Midland	Analytical Method:	SM 4500-Cl B	Prep Method:	N/A
Analysis:	Chloride (Titration)	Date Analyzed:	2015-03-03	Analyzed By:	EM
QC Batch:	119740	Sample Preparation:	2015-03-03	Prepared By:	EM
Prep Batch:	101282				

continued ...

Report Date: March 5, 2015
7030714G094.001

Work Order: 15022632
B-7 LATERAL

Page Number: 23 of 41
N/A

sample 387737 continued ...

Parameter	Flag	Cert	RL Result	Units	Dilution	RL
Parameter	Flag	Cert	RL Result	Units	Dilution	RL
Chloride	Qs,U		<20.0	mg/Kg	5	4.00

Sample: 387737 - SP

Laboratory:	Midland				
Analysis:	TPH DRO - NEW	Analytical Method:	S 8015 D	Prep Method:	N/A
QC Batch:	119724	Date Analyzed:	2015-03-03	Analyzed By:	SC
Prep Batch:	101249	Sample Preparation:	2015-03-02	Prepared By:	SC

Parameter	Flag	Cert	RL Result	Units	Dilution	RL
DRO	U	5	<50.0	mg/Kg	1	50.0

Surrogate	Flag	Cert	Result	Units	Dilution	Spike Amount	Percent Recovery	Recovery Limits
n-Tricosane			86.2	mg/Kg	1	100	86	70 - 130

Sample: 387737 - SP

Laboratory:	Midland				
Analysis:	TPH GRO	Analytical Method:	S 8015 D	Prep Method:	S 5035
QC Batch:	119791	Date Analyzed:	2015-03-05	Analyzed By:	AK
Prep Batch:	101317	Sample Preparation:	2015-03-04	Prepared By:	AK

Parameter	Flag	Cert	RL Result	Units	Dilution	RL
GRO	U	5	<4.00	mg/Kg	1	4.00

Surrogate	Flag	Cert	Result	Units	Dilution	Spike Amount	Percent Recovery	Recovery Limits
Trifluorotoluene (TFT)			1.74	mg/Kg	1	2.00	87	70 - 130
4-Bromofluorobenzene (4-BFB)			1.84	mg/Kg	1	2.00	92	70 - 130

Method Blanks

Method Blank (1) QC Batch: 119724

QC Batch: 119724 Date Analyzed: 2015-03-03 Analyzed By: SC
Prep Batch: 101249 QC Preparation: 2015-03-02 Prepared By: SC

Parameter	Flag	Cert	MDL Result	Units	RL
DRO		5	<7.41	mg/Kg	50

Surrogate	Flag	Cert	Result	Units	Dilution	Spike Amount	Percent Recovery	Recovery Limits
n-Tricosane			91.3	mg/Kg	1	100	91	70 - 130

Method Blank (1) QC Batch: 119733

QC Batch: 119733 Date Analyzed: 2015-03-03 Analyzed By: EM
Prep Batch: 101275 QC Preparation: 2015-03-03 Prepared By: EM

Parameter	Flag	Cert	MDL Result	Units	RL
Chloride			<3.85	mg/Kg	4

Method Blank (1) QC Batch: 119740

QC Batch: 119740 Date Analyzed: 2015-03-03 Analyzed By: EM
Prep Batch: 101282 QC Preparation: 2015-03-03 Prepared By: EM

Parameter	Flag	Cert	MDL Result	Units	RL
Chloride			<3.85	mg/Kg	4

Report Date: March 5, 2015
7030714G094.001

Work Order: 15022632
B-7 LATERAL

Page Number: 25 of 41
N/A

Method Blank (1) QC Batch: 119761

QC Batch: 119761
Prep Batch: 101285

Date Analyzed: 2015-03-04
QC Preparation: 2015-03-03

Analyzed By: AK
Prepared By: AK

Parameter	Flag	Cert	MDL Result	Units	RL
Benzene		5	<0.00533	mg/Kg	0.02
Toluene		5	<0.00645	mg/Kg	0.02
Ethylbenzene		5	<0.0116	mg/Kg	0.02
Xylene		5	<0.00874	mg/Kg	0.02

Surrogate	Flag	Cert	Result	Units	Dilution	Spike Amount	Percent Recovery	Recovery Limits
Trifluorotoluene (TFT)			1.86	mg/Kg	1	2.00	93	70 - 130
4-Bromofluorobenzene (4-BFB)			2.04	mg/Kg	1	2.00	102	70 - 130

Method Blank (1) QC Batch: 119764

QC Batch: 119764
Prep Batch: 101285

Date Analyzed: 2015-03-04
QC Preparation: 2015-03-03

Analyzed By: AK
Prepared By: AK

Parameter	Flag	Cert	MDL Result	Units	RL
GRO		5	<2.32	mg/Kg	4

Surrogate	Flag	Cert	Result	Units	Dilution	Spike Amount	Percent Recovery	Recovery Limits
Trifluorotoluene (TFT)			1.94	mg/Kg	1	2.00	97	70 - 130
4-Bromofluorobenzene (4-BFB)			1.83	mg/Kg	1	2.00	92	70 - 130

Method Blank (1) QC Batch: 119789

QC Batch: 119789
Prep Batch: 101317

Date Analyzed: 2015-03-05
QC Preparation: 2015-03-04

Analyzed By: AK
Prepared By: AK

Parameter	Flag	Cert	MDL Result	Units	RL
Benzene		5	<0.00533	mg/Kg	0.02
Toluene		5	<0.00645	mg/Kg	0.02
Ethylbenzene		5	<0.0116	mg/Kg	0.02

continued . . .

Report Date: March 5, 2015
7030714G094.001

Work Order: 15022632
B-7 LATERAL

Page Number: 26 of 41
N/A

method blank continued ...

Parameter	Flag	Cert	MDL Result	Units	RL
Xylene		5	<0.00874	mg/Kg	0.02

Surrogate	Flag	Cert	Result	Units	Dilution	Spike Amount	Percent Recovery	Recovery Limits
Trifluorotoluene (TFT)			1.82	mg/Kg	1	2.00	91	70 - 130
4-Bromofluorobenzene (4-BFB)			2.01	mg/Kg	1	2.00	100	70 - 130

Method Blank (1) QC Batch: 119791

QC Batch: 119791
Prep Batch: 101317

Date Analyzed: 2015-03-05
QC Preparation: 2015-03-04

Analyzed By: AK
Prepared By: AK

Parameter	Flag	Cert	MDL Result	Units	RL
GRO		5	<2.32	mg/Kg	4

Surrogate	Flag	Cert	Result	Units	Dilution	Spike Amount	Percent Recovery	Recovery Limits
Trifluorotoluene (TFT)			1.88	mg/Kg	1	2.00	94	70 - 130
4-Bromofluorobenzene (4-BFB)			1.82	mg/Kg	1	2.00	91	70 - 130

Report Date: March 5, 2015
7030714G094.001

Work Order: 15022632
B-7 LATERAL

Page Number: 27 of 41
N/A

Laboratory Control Spikes

Laboratory Control Spike (LCS-1)

QC Batch: 119724
Prep Batch: 101249

Date Analyzed: 2015-03-03
QC Preparation: 2015-03-02

Analyzed By: SC
Prepared By: SC

Param	F	C	LCS Result	Units	Dil.	Spike Amount	Matrix Result	Rec.	Rec. Limit
DRO		5	251	mg/Kg	1	250	<7.41	100	70 - 130

Percent recovery is based on the spike result. RPD is based on the spike and spike duplicate result.

Param	F	C	LCSD Result	Units	Dil.	Spike Amount	Matrix Result	Rec.	Rec. Limit	RPD	RPD Limit
DRO		5	260	mg/Kg	1	250	<7.41	104	70 - 130	4	20

Percent recovery is based on the spike result. RPD is based on the spike and spike duplicate result.

Surrogate	LCS Result	LCSD Result	Units	Dil.	Spike Amount	LCS Rec.	LCSD Rec.	Rec. Limit
n-Tricosane	101	99.2	mg/Kg	1	100	101	99	70 - 130

Laboratory Control Spike (LCS-1)

QC Batch: 119733
Prep Batch: 101275

Date Analyzed: 2015-03-03
QC Preparation: 2015-03-03

Analyzed By: EM
Prepared By: EM

Param	F	C	LCS Result	Units	Dil.	Spike Amount	Matrix Result	Rec.	Rec. Limit
Chloride			2680	mg/Kg	5	2500	<19.2	107	85 - 115

Percent recovery is based on the spike result. RPD is based on the spike and spike duplicate result.

Param	F	C	LCSD Result	Units	Dil.	Spike Amount	Matrix Result	Rec.	Rec. Limit	RPD	RPD Limit
Chloride			2580	mg/Kg	5	2500	<19.2	103	85 - 115	4	20

Percent recovery is based on the spike result. RPD is based on the spike and spike duplicate result.

Report Date: March 5, 2015
7030714G094.001

Work Order: 15022632
B-7 LATERAL

Page Number: 28 of 41
N/A

Laboratory Control Spike (LCS-1)

QC Batch: 119740
Prep Batch: 101282

Date Analyzed: 2015-03-03
QC Preparation: 2015-03-03

Analyzed By: EM
Prepared By: EM

Param	F	C	LCS Result	Units	Dil.	Spike Amount	Matrix Result	Rec.	Rec. Limit
Chloride			2340	mg/Kg	5	2500	<19.2	93	85 - 115

Percent recovery is based on the spike result. RPD is based on the spike and spike duplicate result.

Param	F	C	LCSD Result	Units	Dil.	Spike Amount	Matrix Result	Rec.	Rec. Limit	RPD	RPD Limit
Chloride			2340	mg/Kg	5	2500	<19.2	93	85 - 115	0	20

Percent recovery is based on the spike result. RPD is based on the spike and spike duplicate result.

Laboratory Control Spike (LCS-1)

QC Batch: 119761
Prep Batch: 101285

Date Analyzed: 2015-03-04
QC Preparation: 2015-03-03

Analyzed By: AK
Prepared By: AK

Param	F	C	LCS Result	Units	Dil.	Spike Amount	Matrix Result	Rec.	Rec. Limit
Benzene		5	2.09	mg/Kg	1	2.00	<0.00533	104	70 - 130
Toluene		5	2.02	mg/Kg	1	2.00	<0.00645	101	70 - 130
Ethylbenzene		5	2.07	mg/Kg	1	2.00	<0.0116	104	70 - 130
Xylene		5	6.25	mg/Kg	1	6.00	<0.00874	104	70 - 130

Percent recovery is based on the spike result. RPD is based on the spike and spike duplicate result.

Param	F	C	LCSD Result	Units	Dil.	Spike Amount	Matrix Result	Rec.	Rec. Limit	RPD	RPD Limit
Benzene		5	2.00	mg/Kg	1	2.00	<0.00533	100	70 - 130	4	20
Toluene		5	1.96	mg/Kg	1	2.00	<0.00645	98	70 - 130	3	20
Ethylbenzene		5	1.99	mg/Kg	1	2.00	<0.0116	100	70 - 130	4	20
Xylene		5	6.03	mg/Kg	1	6.00	<0.00874	100	70 - 130	4	20

Percent recovery is based on the spike result. RPD is based on the spike and spike duplicate result.

Surrogate	LCS Result	LCSD Result	Units	Dil.	Spike Amount	LCS Rec.	LCSD Rec.	Rec. Limit
Trifluorotoluene (TFT)	1.76	1.78	mg/Kg	1	2.00	88	89	70 - 130
4-Bromofluorobenzene (4-BFB)	2.05	2.08	mg/Kg	1	2.00	102	104	70 - 130

Report Date: March 5, 2015
7030714G094.001

Work Order: 15022632
B-7 LATERAL

Page Number: 29 of 41
N/A

Laboratory Control Spike (LCS-1)

QC Batch: 119764
Prep Batch: 101285

Date Analyzed: 2015-03-04
QC Preparation: 2015-03-03

Analyzed By: AK
Prepared By: AK

Param	F	C	LCS Result	Units	Dil.	Spike Amount	Matrix Result	Rec.	Rec. Limit
GRO		5	20.5	mg/Kg	1	20.0	<2.32	102	70 - 130

Percent recovery is based on the spike result. RPD is based on the spike and spike duplicate result.

Param	F	C	LCSD Result	Units	Dil.	Spike Amount	Matrix Result	Rec.	Rec. Limit	RPD	RPD Limit
GRO		5	21.9	mg/Kg	1	20.0	<2.32	110	70 - 130	7	20

Percent recovery is based on the spike result. RPD is based on the spike and spike duplicate result.

Surrogate	LCS Result	LCSD Result	Units	Dil.	Spike Amount	LCS Rec.	LCSD Rec.	Rec. Limit
Trifluorotoluene (TFT)	1.95	1.94	mg/Kg	1	2.00	98	97	70 - 130
4-Bromofluorobenzene (4-BFB)	1.89	1.92	mg/Kg	1	2.00	94	96	70 - 130

Laboratory Control Spike (LCS-1)

QC Batch: 119789
Prep Batch: 101317

Date Analyzed: 2015-03-05
QC Preparation: 2015-03-04

Analyzed By: AK
Prepared By: AK

Param	F	C	LCS Result	Units	Dil.	Spike Amount	Matrix Result	Rec.	Rec. Limit
Benzene		5	2.05	mg/Kg	1	2.00	<0.00533	102	70 - 130
Toluene		5	1.99	mg/Kg	1	2.00	<0.00645	100	70 - 130
Ethylbenzene		5	1.99	mg/Kg	1	2.00	<0.0116	100	70 - 130
Xylene		5	6.10	mg/Kg	1	6.00	<0.00874	102	70 - 130

Percent recovery is based on the spike result. RPD is based on the spike and spike duplicate result.

Param	F	C	LCSD Result	Units	Dil.	Spike Amount	Matrix Result	Rec.	Rec. Limit	RPD	RPD Limit
Benzene		5	2.06	mg/Kg	1	2.00	<0.00533	103	70 - 130	0	20
Toluene		5	2.02	mg/Kg	1	2.00	<0.00645	101	70 - 130	2	20
Ethylbenzene		5	2.02	mg/Kg	1	2.00	<0.0116	101	70 - 130	2	20
Xylene		5	6.15	mg/Kg	1	6.00	<0.00874	102	70 - 130	1	20

Percent recovery is based on the spike result. RPD is based on the spike and spike duplicate result.

continued . . .

Report Date: March 5, 2015
7030714G094.001

Work Order: 15022632
B-7 LATERAL

Page Number: 30 of 41
N/A

control spikes continued ...

Surrogate	LCS Result	LCSD Result	Units	Dil.	Spike Amount	LCS Rec.	LCSD Rec.	Rec. Limit
Surrogate	LCS Result	LCSD Result	Units	Dil.	Spike Amount	LCS Rec.	LCSD Rec.	Rec. Limit
Trifluorotoluene (TFT)	1.75	1.73	mg/Kg	1	2.00	88	86	70 - 130
4-Bromofluorobenzene (4-BFB)	2.06	2.03	mg/Kg	1	2.00	103	102	70 - 130

Laboratory Control Spike (LCS-1)

QC Batch: 119791
Prep Batch: 101317

Date Analyzed: 2015-03-05
QC Preparation: 2015-03-04

Analyzed By: AK
Prepared By: AK

Param	F	C	LCS Result	Units	Dil.	Spike Amount	Matrix Result	Rec.	Rec. Limit
GRO		5	21.3	mg/Kg	1	20.0	<2.32	106	70 - 130

Percent recovery is based on the spike result. RPD is based on the spike and spike duplicate result.

Param	F	C	LCSD Result	Units	Dil.	Spike Amount	Matrix Result	Rec.	Rec. Limit	RPD	RPD Limit
GRO		5	19.4	mg/Kg	1	20.0	<2.32	97	70 - 130	9	20

Percent recovery is based on the spike result. RPD is based on the spike and spike duplicate result.

Surrogate	LCS Result	LCSD Result	Units	Dil.	Spike Amount	LCS Rec.	LCSD Rec.	Rec. Limit
Trifluorotoluene (TFT)	1.93	1.90	mg/Kg	1	2.00	96	95	70 - 130
4-Bromofluorobenzene (4-BFB)	1.92	1.90	mg/Kg	1	2.00	96	95	70 - 130

Report Date: March 5, 2015
7030714G094.001

Work Order: 15022632
B-7 LATERAL

Page Number: 31 of 41
N/A

Matrix Spikes

Matrix Spike (MS-1) Spiked Sample: 387694

QC Batch: 119724
Prep Batch: 101249

Date Analyzed: 2015-03-03
QC Preparation: 2015-03-02

Analyzed By: SC
Prepared By: SC

Param	F	C	MS Result	Units	Dil.	Spike Amount	Matrix Result	Rec.	Rec. Limit
DRO		5	512	mg/Kg	1	250	292	88	70 - 130

Percent recovery is based on the spike result. RPD is based on the spike and spike duplicate result.

Param	F	C	MSD Result	Units	Dil.	Spike Amount	Matrix Result	Rec.	Rec. Limit	RPD	RPD Limit
DRO		5	527	mg/Kg	1	250	292	94	70 - 130	3	20

Percent recovery is based on the spike result. RPD is based on the spike and spike duplicate result.

Surrogate	MS Result	MSD Result	Units	Dil.	Spike Amount	MS Rec.	MSD Rec.	Rec. Limit
n-Tricosane	97.1	101	mg/Kg	1	100	97	101	70 - 130

Matrix Spike (MS-1) Spiked Sample: 387688

QC Batch: 119733
Prep Batch: 101275

Date Analyzed: 2015-03-03
QC Preparation: 2015-03-03

Analyzed By: EM
Prepared By: EM

Param	F	C	MS Result	Units	Dil.	Spike Amount	Matrix Result	Rec.	Rec. Limit
Chloride	Qs	Qs	574	mg/Kg	5	2500	383	8	78.9 - 121

Percent recovery is based on the spike result. RPD is based on the spike and spike duplicate result.

Param	F	C	MSD Result	Units	Dil.	Spike Amount	Matrix Result	Rec.	Rec. Limit	RPD	RPD Limit
Chloride	Qs	Qs	574	mg/Kg	5	2500	383	8	78.9 - 121	0	20

Percent recovery is based on the spike result. RPD is based on the spike and spike duplicate result.

Report Date: March 5, 2015
7030714G094.001

Work Order: 15022632
B-7 LATERAL

Page Number: 32 of 41
N/A

Matrix Spike (MS-1) Spiked Sample: 387729

QC Batch: 119740
Prep Batch: 101282

Date Analyzed: 2015-03-03
QC Preparation: 2015-03-03

Analyzed By: EM
Prepared By: EM

Param	F	C	MS Result	Units	Dil.	Spike Amount	Matrix Result	Rec.	Rec. Limit
Chloride	Q _s	Q _s	280	mg/Kg	5	2500	561	-11	78.9 - 121

Percent recovery is based on the spike result. RPD is based on the spike and spike duplicate result.

Param	F	C	MSD Result	Units	Dil.	Spike Amount	Matrix Result	Rec.	Rec. Limit	RPD	RPD Limit
Chloride	Q _s	Q _s	280	mg/Kg	5	2500	561	-11	78.9 - 121	0	20

Percent recovery is based on the spike result. RPD is based on the spike and spike duplicate result.

Matrix Spike (MS-1) Spiked Sample: 387690

QC Batch: 119761
Prep Batch: 101285

Date Analyzed: 2015-03-04
QC Preparation: 2015-03-03

Analyzed By: AK
Prepared By: AK

Param	F	C	MS Result	Units	Dil.	Spike Amount	Matrix Result	Rec.	Rec. Limit
Benzene		5	1.63	mg/Kg	1	2.00	0.027	80	70 - 130
Toluene		5	1.68	mg/Kg	1	2.00	0.0436	82	70 - 130
Ethylbenzene		5	1.81	mg/Kg	1	2.00	<0.0116	90	70 - 130
Xylene		5	5.48	mg/Kg	1	6.00	0.0334	91	70 - 130

Percent recovery is based on the spike result. RPD is based on the spike and spike duplicate result.

Param	F	C	MSD Result	Units	Dil.	Spike Amount	Matrix Result	Rec.	Rec. Limit	RPD	RPD Limit
Benzene		5	1.48	mg/Kg	1	2.00	0.027	73	70 - 130	10	20
Toluene		5	1.54	mg/Kg	1	2.00	0.0436	75	70 - 130	9	20
Ethylbenzene		5	1.66	mg/Kg	1	2.00	<0.0116	83	70 - 130	9	20
Xylene		5	5.01	mg/Kg	1	6.00	0.0334	83	70 - 130	9	20

Percent recovery is based on the spike result. RPD is based on the spike and spike duplicate result.

Surrogate	MS Result	MSD Result	Units	Dil.	Spike Amount	MS Rec.	MSD Rec.	Rec. Limit
Trifluorotoluene (TFT)	1.77	1.64	mg/Kg	1	2	88	82	70 - 130
4-Bromofluorobenzene (4-BFB)	2.16	2.03	mg/Kg	1	2	108	102	70 - 130

Report Date: March 5, 2015
7030714G094.001

Work Order: 15022632
B-7 LATERAL

Page Number: 33 of 41
N/A

Matrix Spike (MS-1) Spiked Sample: 387690

QC Batch: 119764
Prep Batch: 101285

Date Analyzed: 2015-03-04
QC Preparation: 2015-03-03

Analyzed By: AK
Prepared By: AK

Param	F	C	MS Result	Units	Dil.	Spike Amount	Matrix Result	Rec.	Rec. Limit
GRO		5	14.7	mg/Kg	1	20.0	<2.32	74	70 - 130

Percent recovery is based on the spike result. RPD is based on the spike and spike duplicate result.

Param	F	C	MSD Result	Units	Dil.	Spike Amount	Matrix Result	Rec.	Rec. Limit	RPD	RPD Limit
GRO		5	15.2	mg/Kg	1	20.0	<2.32	76	70 - 130	3	20

Percent recovery is based on the spike result. RPD is based on the spike and spike duplicate result.

Surrogate	MS Result	MSD Result	Units	Dil.	Spike Amount	MS Rec.	MSD Rec.	Rec. Limit
Trifluorotoluene (TFT)	1.74	1.67	mg/Kg	1	2	87	84	70 - 130
4-Bromofluorobenzene (4-BFB)	1.94	1.88	mg/Kg	1	2	97	94	70 - 130

Matrix Spike (xMS-1) Spiked Sample: 387700

QC Batch: 119789
Prep Batch: 101317

Date Analyzed: 2015-03-05
QC Preparation: 2015-03-04

Analyzed By: AK
Prepared By: AK

Param	F	C	MS Result	Units	Dil.	Spike Amount	Matrix Result	Rec.	Rec. Limit
Benzene		5	1.62	mg/Kg	1	2.00	<0.00533	81	70 - 130
Toluene		5	1.65	mg/Kg	1	2.00	<0.00645	82	70 - 130
Ethylbenzene		5	1.79	mg/Kg	1	2.00	<0.0116	90	70 - 130
Xylene		5	5.47	mg/Kg	1	6.00	<0.00874	91	70 - 130

Percent recovery is based on the spike result. RPD is based on the spike and spike duplicate result.

Param	F	C	MSD Result	Units	Dil.	Spike Amount	Matrix Result	Rec.	Rec. Limit	RPD	RPD Limit
Benzene		5	1.79	mg/Kg	1	2.00	<0.00533	90	70 - 130	10	20
Toluene		5	1.83	mg/Kg	1	2.00	<0.00645	92	70 - 130	10	20
Ethylbenzene		5	1.95	mg/Kg	1	2.00	<0.0116	98	70 - 130	9	20
Xylene		5	5.97	mg/Kg	1	6.00	<0.00874	100	70 - 130	9	20

Percent recovery is based on the spike result. RPD is based on the spike and spike duplicate result.

continued ...

Report Date: March 5, 2015
7030714G094.001

Work Order: 15022632
B-7 LATERAL

Page Number: 34 of 41
N/A

matrix spikes continued ...

Surrogate	MS Result	MSD Result	Units	Dil.	Spike Amount	MS Rec.	MSD Rec.	Rec. Limit
Surrogate	MS Result	MSD Result	Units	Dil.	Spike Amount	MS Rec.	MSD Rec.	Rec. Limit
Trifluorotoluene (TFT)	1.68	1.76	mg/Kg	1	2	84	88	70 - 130
4-Bromofluorobenzene (4-BFB)	2.07	2.13	mg/Kg	1	2	104	106	70 - 130

Matrix Spike (MS-1) Spiked Sample: 387700

QC Batch: 119791
Prep Batch: 101317

Date Analyzed: 2015-03-05
QC Preparation: 2015-03-04

Analyzed By: AK
Prepared By: AK

Param	F	C	MS Result	Units	Dil.	Spike Amount	Matrix Result	Rec.	Rec. Limit
GRO		5	15.6	mg/Kg	1	20.0	<2.32	78	70 - 130

Percent recovery is based on the spike result. RPD is based on the spike and spike duplicate result.

Param	F	C	MSD Result	Units	Dil.	Spike Amount	Matrix Result	Rec.	Rec. Limit	RPD	RPD Limit
GRO		5	16.6	mg/Kg	1	20.0	<2.32	83	70 - 130	6	20

Percent recovery is based on the spike result. RPD is based on the spike and spike duplicate result.

Surrogate	MS Result	MSD Result	Units	Dil.	Spike Amount	MS Rec.	MSD Rec.	Rec. Limit
Trifluorotoluene (TFT)	1.68	1.76	mg/Kg	1	2	84	88	70 - 130
4-Bromofluorobenzene (4-BFB)	1.89	1.95	mg/Kg	1	2	94	98	70 - 130

Calibration Standards

Standard (CCV-1)

QC Batch: 119724

Date Analyzed: 2015-03-03

Analyzed By: SC

Param	Flag	Cert	Units	CCVs True Conc.	CCVs Found Conc.	CCVs Percent Recovery	Percent Recovery Limits	Date Analyzed
DRO		5	mg/Kg	250	224	90	80 - 120	2015-03-03

Standard (CCV-2)

QC Batch: 119724

Date Analyzed: 2015-03-03

Analyzed By: SC

Param	Flag	Cert	Units	CCVs True Conc.	CCVs Found Conc.	CCVs Percent Recovery	Percent Recovery Limits	Date Analyzed
DRO		5	mg/Kg	250	218	87	80 - 120	2015-03-03

Standard (CCV-3)

QC Batch: 119724

Date Analyzed: 2015-03-03

Analyzed By: SC

Param	Flag	Cert	Units	CCVs True Conc.	CCVs Found Conc.	CCVs Percent Recovery	Percent Recovery Limits	Date Analyzed
DRO		5	mg/Kg	250	215	86	80 - 120	2015-03-03

Standard (ICV-1)

QC Batch: 119733

Date Analyzed: 2015-03-03

Analyzed By: EM

Param	Flag	Cert	Units	ICVs True Conc.	ICVs Found Conc.	ICVs Percent Recovery	Percent Recovery Limits	Date Analyzed
Chloride			mg/Kg	100	100	100	85 - 115	2015-03-03

Report Date: March 5, 2015
7030714G094.001

Work Order: 15022632
B-7 LATERAL

Page Number: 36 of 41
N/A

Standard (CCV-1)

QC Batch: 119733

Date Analyzed: 2015-03-03

Analyzed By: EM

Param	Flag	Cert	Units	CCVs True Conc.	CCVs Found Conc.	CCVs Percent Recovery	Percent Recovery Limits	Date Analyzed
Chloride			mg/Kg	100	100	100	85 - 115	2015-03-03

Standard (ICV-1)

QC Batch: 119740

Date Analyzed: 2015-03-03

Analyzed By: EM

Param	Flag	Cert	Units	ICVs True Conc.	ICVs Found Conc.	ICVs Percent Recovery	Percent Recovery Limits	Date Analyzed
Chloride			mg/Kg	100	100	100	85 - 115	2015-03-03

Standard (CCV-1)

QC Batch: 119740

Date Analyzed: 2015-03-03

Analyzed By: EM

Param	Flag	Cert	Units	CCVs True Conc.	CCVs Found Conc.	CCVs Percent Recovery	Percent Recovery Limits	Date Analyzed
Chloride			mg/Kg	100	100	100	85 - 115	2015-03-03

Standard (CCV-1)

QC Batch: 119761

Date Analyzed: 2015-03-04

Analyzed By: AK

Param	Flag	Cert	Units	CCVs True Conc.	CCVs Found Conc.	CCVs Percent Recovery	Percent Recovery Limits	Date Analyzed
Benzene		5	mg/kg	0.100	0.103	103	80 - 120	2015-03-04
Toluene		5	mg/kg	0.100	0.0995	100	80 - 120	2015-03-04
Ethylbenzene		5	mg/kg	0.100	0.101	101	80 - 120	2015-03-04
Xylene		5	mg/kg	0.300	0.304	101	80 - 120	2015-03-04

Report Date: March 5, 2015
7030714G094.001

Work Order: 15022632
B-7 LATERAL

Page Number: 37 of 41
N/A

Standard (CCV-2)

QC Batch: 119761

Date Analyzed: 2015-03-04

Analyzed By: AK

Param	Flag	Cert	Units	CCVs True Conc.	CCVs Found Conc.	CCVs Percent Recovery	Percent Recovery Limits	Date Analyzed
Benzene		5	mg/kg	0.100	0.0987	99	80 - 120	2015-03-04
Toluene		5	mg/kg	0.100	0.0978	98	80 - 120	2015-03-04
Ethylbenzene		5	mg/kg	0.100	0.0987	99	80 - 120	2015-03-04
Xylene		5	mg/kg	0.300	0.297	99	80 - 120	2015-03-04

Standard (CCV-3)

QC Batch: 119761

Date Analyzed: 2015-03-04

Analyzed By: AK

Param	Flag	Cert	Units	CCVs True Conc.	CCVs Found Conc.	CCVs Percent Recovery	Percent Recovery Limits	Date Analyzed
Benzene		5	mg/kg	0.100	0.102	102	80 - 120	2015-03-04
Toluene		5	mg/kg	0.100	0.0984	98	80 - 120	2015-03-04
Ethylbenzene		5	mg/kg	0.100	0.101	101	80 - 120	2015-03-04
Xylene		5	mg/kg	0.300	0.302	101	80 - 120	2015-03-04

Standard (CCV-1)

QC Batch: 119764

Date Analyzed: 2015-03-04

Analyzed By: AK

Param	Flag	Cert	Units	CCVs True Conc.	CCVs Found Conc.	CCVs Percent Recovery	Percent Recovery Limits	Date Analyzed
GRO		5	mg/Kg	1.00	1.04	104	80 - 120	2015-03-04

Standard (CCV-2)

QC Batch: 119764

Date Analyzed: 2015-03-04

Analyzed By: AK

Param	Flag	Cert	Units	CCVs True Conc.	CCVs Found Conc.	CCVs Percent Recovery	Percent Recovery Limits	Date Analyzed
GRO		5	mg/Kg	1.00	1.09	109	80 - 120	2015-03-04

Report Date: March 5, 2015
7030714G094.001

Work Order: 15022632
B-7 LATERAL

Page Number: 38 of 41
N/A

Standard (CCV-3)

QC Batch: 119764

Date Analyzed: 2015-03-04

Analyzed By: AK

Param	Flag	Cert	Units	CCVs True Conc.	CCVs Found Conc.	CCVs Percent Recovery	Percent Recovery Limits	Date Analyzed
GRO		5	mg/Kg	1.00	0.967	97	80 - 120	2015-03-04

Standard (CCV-1)

QC Batch: 119789

Date Analyzed: 2015-03-05

Analyzed By: AK

Param	Flag	Cert	Units	CCVs True Conc.	CCVs Found Conc.	CCVs Percent Recovery	Percent Recovery Limits	Date Analyzed
Benzene		5	mg/kg	0.100	0.102	102	80 - 120	2015-03-05
Toluene		5	mg/kg	0.100	0.0998	100	80 - 120	2015-03-05
Ethylbenzene		5	mg/kg	0.100	0.101	101	80 - 120	2015-03-05
Xylene		5	mg/kg	0.300	0.304	101	80 - 120	2015-03-05

Standard (CCV-2)

QC Batch: 119789

Date Analyzed: 2015-03-05

Analyzed By: AK

Param	Flag	Cert	Units	CCVs True Conc.	CCVs Found Conc.	CCVs Percent Recovery	Percent Recovery Limits	Date Analyzed
Benzene		5	mg/kg	0.100	0.0983	98	80 - 120	2015-03-05
Toluene		5	mg/kg	0.100	0.0952	95	80 - 120	2015-03-05
Ethylbenzene		5	mg/kg	0.100	0.0961	96	80 - 120	2015-03-05
Xylene		5	mg/kg	0.300	0.288	96	80 - 120	2015-03-05

Standard (CCV-3)

QC Batch: 119789

Date Analyzed: 2015-03-05

Analyzed By: AK

Param	Flag	Cert	Units	CCVs True Conc.	CCVs Found Conc.	CCVs Percent Recovery	Percent Recovery Limits	Date Analyzed
Benzene		5	mg/kg	0.100	0.0995	100	80 - 120	2015-03-05

continued ...

Report Date: March 5, 2015
7030714G094.001

Work Order: 15022632
B-7 LATERAL

Page Number: 39 of 41
N/A

standard continued ...

Param	Flag	Cert	Units	CCVs True Conc.	CCVs Found Conc.	CCVs Percent Recovery	Percent Recovery Limits	Date Analyzed
Toluene		5	mg/kg	0.100	0.0969	97	80 - 120	2015-03-05
Ethylbenzene		5	mg/kg	0.100	0.0967	97	80 - 120	2015-03-05
Xylene		5	mg/kg	0.300	0.294	98	80 - 120	2015-03-05

Standard (CCV-1)

QC Batch: 119791

Date Analyzed: 2015-03-05

Analyzed By: AK

Param	Flag	Cert	Units	CCVs True Conc.	CCVs Found Conc.	CCVs Percent Recovery	Percent Recovery Limits	Date Analyzed
GRO		5	mg/Kg	1.00	1.04	104	80 - 120	2015-03-05

Standard (CCV-2)

QC Batch: 119791

Date Analyzed: 2015-03-05

Analyzed By: AK

Param	Flag	Cert	Units	CCVs True Conc.	CCVs Found Conc.	CCVs Percent Recovery	Percent Recovery Limits	Date Analyzed
GRO		5	mg/Kg	1.00	1.01	101	80 - 120	2015-03-05

Standard (CCV-3)

QC Batch: 119791

Date Analyzed: 2015-03-05

Analyzed By: AK

Param	Flag	Cert	Units	CCVs True Conc.	CCVs Found Conc.	CCVs Percent Recovery	Percent Recovery Limits	Date Analyzed
GRO		5	mg/Kg	1.00	0.937	94	80 - 120	2015-03-05

Appendix

Report Definitions

Name	Definition
MDL	Method Detection Limit
MQL	Minimum Quantitation Limit
SDL	Sample Detection Limit

Laboratory Certifications

C	Certifying Authority	Certification Number	Laboratory Location
-	NCTRCA	WFWB384444Y0909	TraceAnalysis
-	DBE	VN 20657	TraceAnalysis
-	HUB	1752439743100-86536	TraceAnalysis
-	WBE	237019	TraceAnalysis
1	PJLA	L14-93	Lubbock
2	Kansas	Kansas E-10317	Lubbock
3	LELAP	LELAP-02003	Lubbock
4	NELAP	T104704219-14-10	Lubbock
5	NELAP	T104704392-14-8	Midland
6		2014-018	Lubbock

Standard Flags

F	Description
B	Analyte detected in the corresponding method blank above the method detection limit
H	Analyzed out of hold time
J	Estimated concentration
Jb	The analyte is positively identified and the value is approximated between the SDL and MQL. Sample contains less then ten times the concentration found in the method blank. The result should be considered non-detect to the SDL.
Je	Estimated concentration exceeding calibration range.
MI1	Split peak or shoulder peak
MI2	Instrument software did not integrate
MI3	Instrument software misidentified the peak
MI4	Instrument software integrated improperly
MI5	Baseline correction
Qc	Calibration check outside of laboratory limits.
Qr	RPD outside of laboratory limits
Qs	Spike recovery outside of laboratory limits.



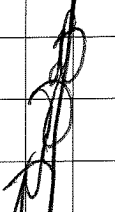
F	Description
Qsr	Surrogate recovery outside of laboratory limits.
U	The analyte is not detected above the SDL

Attachments

The scanned attachments will follow this page.
Please note, each attachment may consist of more than one page.


WO#15022632

CHAIN OF CUSTODY RECORD

 APEX Office Location <u>Midland</u>		Laboratory: <u>True Analysis</u> Address: <u>5002 Basin</u> Contact: _____ Phone: _____ PO/ISO #: _____		ANALYSIS REQUESTED <u>BTEX 80218</u> <u>TPH 601280</u> <u>Chlorides</u>		Lab use only Due Date: _____ Temp. of coolers when received (C°): <u>4.1</u> 1 2 3 4 5 Page <u>1</u> of <u>2</u>						
Project Manager <u>Carla Llanes</u> Sampler's Name <u>Vanis Turner</u>		Sampler's Signature 		Project Name <u>B-7 Latent</u>		No/Type of Containers <u>4</u>						
Matrix	Date	Time	Comp	G r a b	Identifying Marks of Sample(s)	Start Depth	End Depth	VOA	A/G 1 L	250 ml	Glass Jar	P/O
S	2/25/15	1333		+	RP		10'				X	
↓	↓	1340		↓	SP							
↓	↓	1350		↓	Bkg 1		1'					
↓	↓	1400		↓	Bkg 2		1'					
 2/25/15												
Turn around time		<input checked="" type="checkbox"/> Normal		<input type="checkbox"/> 25% Rush		<input type="checkbox"/> 50% Rush		<input type="checkbox"/> 100% Rush		NOTES: <u>Hold Bkg 1 & 2</u>		
Relinquished by (Signature)		Date: <u>2/25/15</u>		Time: <u>1228</u>		Received by: (Signature)		Date: <u>2/26/15</u>		Time: <u>1228</u>		
Relinquished by (Signature)		Date:		Time:		Received by: (Signature)		Date:		Time:		
Relinquished by (Signature)		Date:		Time:		Received by: (Signature)		Date:		Time:		
Relinquished by (Signature)		Date:		Time:		Received by: (Signature)		Date:		Time:		
Matrix Container	WW - Wastewater VOA - 40 ml vial	W - Water A/G - Amber / Or Glass 1 Liter	S - Soil SD - Solid	L - Liquid 250 ml - Glass wide mouth	A - Air Bag	C - Charcoal tube P/O - Plastic or other	SL - sludge	O - Oil				

WO# 15022632

CHAIN OF CUSTODY RECORD

 <p>APEX Office Location <u>Midland</u></p>		<p>Laboratory: <u>Trace Analysis</u> Address: <u>5002 Basin</u> Contact: _____ Phone: _____ POISO #: _____</p>		<p>ANALYSIS REQUESTED <u>BTEX 80218</u> <u>CDPH 601020</u> <u>Chlorides</u></p>		<p>Lab use only Due Date: _____</p>					
<p>Project Manager <u>Favoranne Job</u> Sampler's Name <u>Kevin's Turner</u></p>		<p>Project Name <u>B-7 lateral</u> No/Type of Containers <u>10</u></p>		<p>Temp. of coolers when received (C°): 1 <u>2</u> 2 <u>3</u> 3 <u>4</u> 4 <u>5</u> 5</p>		<p>Page <u>1</u> of <u>1</u></p>					
Matrix	Date	Time	Identifying Marks of Sample(s)	Start Depth	End Depth	VOA	A/G 1 L	250 ml	Glass Jar	P/O	Lab Sample ID (Lab Use Only)
S	2/25/15	1240	A-1						X		387726 DD
		1243	A-2								387727
		1245	B-1								387728
		1250	B-2								387729
		1254	C-1								387730
		1258	C-2								387731
		1320	N-wall		8'						387732
		1323	W-wall								387733
		1326	S-wall								387734
		1329	E-wall								387735

Turn around time	Normal	25% Rush	50% Rush	100% Rush
Relinquished by (Signature)	<u>[Signature]</u>			
Date	2/26/15			
Time	1228			
Received by (Signature)	<u>[Signature]</u>			
Date	2/26/15			
Time	1228			
Relinquished by (Signature)				
Date				
Time				
Relinquished by (Signature)				
Date				
Time				

Matrix Container	WW - Wastewater VOA - 40 ml vial	W - Water A/G - Amber / Or Glass 1 Liter	S - Soil SD - Solid 250 ml - Plastic or other	L - Liquid 250 ml - Glass wide mouth	A - Air Bag	C - Charcoal tube	SL - sludge	O - Oil



APPENDIX E

NMOCD C-141



ENTERPRISE PRODUCTS PARTNERS L.P.
ENTERPRISE PRODUCTS HOLDINGS LLC
(General Partner)

ENTERPRISE PRODUCTS OPERATING LLC

November 14, 2014

7014 1820 0001 6317 7682
Return Receipt Requested

Mr. Mike Bratcher
New Mexico Oil Conservation Division
District 2 Office
811 South First Street
Artesia, New Mexico 88210

**RE: Form C-141 Report for Enterprise Field Services LLC
Release on Carlsbad Area Gathering Lines**

Dear Mr. Bratcher,

Enclosed, please find the required initial C-141 Form report for the unplanned release on our B-7 Line in Eddy County on November 9, 2014.

This report is sent pursuant to NMAC 19.15.29 and as follow-up to verbal notifications made to your office over the phone by Osman De Leon on November 9th, 2014 at 1:06 PM MST. Cleanup activities are currently underway, and a final C-141 form will be submitted when soil sampling results demonstrate that cleanup of the affected area is complete.

If you have any questions or need additional information, please contact Dina Babinski, our area Environmental Supervisor at 210-528-3824, or me at 713-381-6684.

Yours truly,

A handwritten signature in blue ink, appearing to read 'Jon E. Fields'.

Jon E. Fields
Director, Field Environmental

/bjm
Enclosure

District I
1625 N. French Dr., Hobbs, NM 88240
District II
1301 W. Grand Avenue, Artesia, NM 88210
District III
1000 Rio Brazos Road, Aztec, NM 87410
District IV
1220 S. St. Francis Dr., Santa Fe, NM 87505

State of New Mexico
Energy Minerals and Natural Resources

Form C-141
Revised August 8, 2011

Oil Conservation Division
1220 South St. Francis Dr.
Santa Fe, NM 87505

Submit 1 Copy to appropriate District Office in
accordance with 19.15.29 NMAC.

Release Notification and Corrective Action

OPERATOR

☒ Initial Report ☐ Final Report

Name of Company Enterprise Field Services LLC	Contact Dina Babinski
PO Box 4324, Houston, TX 77252	Telephone No. 210-528-3824
Facility Name Pipeline ROW, B-7 Gathering Lateral	Facility Type: Gas Gathering Pipeline
Surface Owner Bureau of Land Management	Mineral Owner NA - Pipeline
Lease No. NA	

LOCATION OF RELEASE

Unit Letter	Section	Township	Range	Feet from the	North/South Line	Feet from the	East/West Line	County
NENE	14	20S	28E	296	North	638	West	Eddy

Latitude: **N 32.580222** Longitude: **W -104.141698**

NATURE OF RELEASE

Type of Release Natural Gas, Pipeline Liquids	Volume of Release: 23288 MCF, 10 BBL Liquids(estimate)	Volume Recovered: N/A
Source of Release Pipeline Leak and blowdown.	Date and Hour of Occurrence 11/09/2014 @ 10:45 MST	Date and Hour of Discovery 11/09/2014 @ 10:45 MST
Was Immediate Notice Given? <input checked="" type="checkbox"/> Yes <input type="checkbox"/> No <input type="checkbox"/> Not Required	If YES, To Whom? Mike Bratcher, District 2	
By Whom? Osman De Leon	Date and Hour 11/09/2014 @ 13:06 MST	
Was a Watercourse Reached? <input type="checkbox"/> Yes <input checked="" type="checkbox"/> No	If YES, Volume Impacting the Watercourse.	

If a Watercourse was Impacted, Describe Fully.*

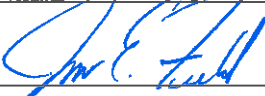
Describe Cause of Problem and Remedial Action Taken.*

Pipeline leak was detected by an Enterprise technician investigating a pressure loss. Pipeline segment was isolated and blown down, and leaking portion was repaired.

Describe Area Affected and Cleanup Action Taken.*

Liquid spill occurred within pipeline ROW with surface staining off ROW. Cleanup activities are currently being performed and additional sampling has been requested to confirm cleanup is satisfactory. All clean-up will be coordinated with landowner.

I hereby certify that the information given above is true and complete to the best of my knowledge and understand that pursuant to NMOCD rules and regulations all operators are required to report and/or file certain release notifications and perform corrective actions for releases which may endanger public health or the environment. The acceptance of a C-141 report by the NMOCD marked as "Final Report" does not relieve the operator of liability should their operations have failed to adequately investigate and remediate contamination that pose a threat to ground water, surface water, human health or the environment. In addition, NMOCD acceptance of a C-141 report does not relieve the operator of responsibility for compliance with any other federal, state, or local laws and/or regulations.

Signature: 	OIL CONSERVATION DIVISION		
Printed Name: Jon E. Fields	Approved by District Supervisor:		
Title: Director, Field Environmental	Approval Date:	Expiration Date:	
E-mail Address: jefields@eprod.com	Conditions of Approval:		Attached <input type="checkbox"/>
Date: 11/14/2014 Phone: 713-381-6684			

* Attach Additional Sheets If Necessary



APPENDIX F

Waste Disposal Tickets

LEA LAND DISPOSAL SITE NEW MEXICO

MILE MARKER #64 US HWY 62/180 • 30 MILES EAST OF CARLSBAD, NM • PHONE (575) 887-4048

LEA LAND, LLC

1300 WEST MAIN STREET • OKLAHOMA CITY, OK 73106 • PHONE (405) 236-4257

J BARC

NON-HAZARDOUS WASTE MANIFEST

NO 105636

1. PAGE OF

2. TRAILER NO. #06

G

3. COMPANY NAME

ENTERPRISE OPER. PROD. LLC

PHONE NO.

713) 381-8500

4. ADDRESS

2182 Commerce

CITY

STATE

ZIP

Midland

TX

79703

5. PICK-UP DATE

12/10/2014

6. TNRCC I.D. NO.

E

7. NAME OR DESCRIPTION OF WASTE SHIPPED:

a.

Non-Regulated, Non-Hazardous Waste

b.

c.

d.

WT:

42360

37420

8. CONTAINERS

No.

Type

9. TOTAL

QUANTITY

10. UNIT

Wt/Vol.

11. TEXAS

WASTE ID #

1

CM

N

E

R

12. COMMENTS OR SPECIAL INSTRUCTIONS:

B7 PIPELINE

TOTAL 79780

13. WASTE PROFILE NO.

503419

A

T

14.

IN CASE OF EMERGENCY OR SPILL, CONTACT

NAME

PHONE NO

24-HOUR EMERGENCY NO.

Kin Slaughter

575-887-4048

O

15. GENERATOR'S CERTIFICATION: I hereby declare that the contents of this consignment are fully and accurately described above by proper shipping name and are classified, packed, marked, and labeled, and are in all respects in proper condition for transport by highway according to applicable international and national government regulations, including applicable state regulations, and are the same materials previously approved by LEA LAND, LLC

R

PRINTED/TYPED NAME

SIGNATURE

DATE

T

R

A

N

S

P

O

R

T

E

R

S

I

A

T

L

Y

16. TRANSPORTER (1)

NAME:

WLBROS CONST.

TEXAS I.D. NO.

IN CASE OF EMERGENCY CONTACT:

ALBERT MADRID

EMERGENCY PHONE:

(575) 706-0566

18. TRANSPORTER (1): Acknowledgment of receipt of material

PRINTED/TYPED NAME

Joe Pulice

SIGNATURE

DATE

12/10/2014

17. TRANSPORTER (2)

NAME:

TEXAS I.D. NO.

IN CASE OF EMERGENCY CONTACT:

EMERGENCY PHONE:

19. TRANSPORTER (2): Acknowledgment of receipt of material

PRINTED/TYPED NAME

SIGNATURE

DATE

Lea Land, LLC

ADDRESS:

Mile Marker 64, U.S. Hwy 62/180,
30 Miles East of Carlsbad, NM

PHONE:

575-887-4048

PERMIT NO.

WM-01-035 - New Mexico

20. COMMENTS

21. DISPOSAL FACILITY'S CERTIFICATION: I hereby certify that the above described wastes were delivered to this facility, that the facility is authorized and permitted to receive such wastes.

AUTHORIZED SIGNATURE

Santa Gonzalez

CELL NO.

DATE

12/10/2014

TIME

9:40

GENERATOR: COPIES 1 & 6

DISPOSAL SITE: COPIES 2 & 3

TRANSPORTERS: COPIES 4 & 5

END

LEA LAND DISPOSAL SITE NEW MEXICO

MILE MARKER #64 US HWY 62/180 • 30 MILES EAST OF CARLSBAD, NM • PHONE (575) 887-4048

LEA LAND, LLC

1300 WEST MAIN STREET • OKLAHOMA CITY, OK 73106 • PHONE (405) 236-4257

Scoters

NON-HAZARDOUS WASTE MANIFEST

NO 105637

1. PAGE ___ OF ___

2. TRAILER NO. # 01

G

3. COMPANY NAME

ENTERPRISE OPER. PROD. LLC
PHONE NO.

4. ADDRESS

2162 Commerce
CITY

STATE

ZIP

5. PICK-UP DATE

12/10/2014

6. TNRCC I.D. NO.

E

(713) 381-8500

(Midland

TX

79703

N

7. NAME OR DESCRIPTION OF WASTE SHIPPED:

a. ~~Non-Regulated, Non-Hazardous Waste~~
b.

E

c.

R

d. WT: 49,340 35,180

A

12. COMMENTS OR SPECIAL INSTRUCTIONS:

B7 PIPELINE

TOTAL 84520

13. WASTE PROFILE NO.

503419

T

14. IN CASE OF EMERGENCY OR SPILL, CONTACT

NAME

PHONE NO

24-HOUR EMERGENCY NO.

Kin Slaughter

575-887-4048

O

15. GENERATOR'S CERTIFICATION: I hereby declare that the contents of this consignment are fully and accurately described above by proper shipping name and are classified, packed, marked, and labeled, and are in all respects in proper condition for transport by highway according to applicable international and national government regulations, including applicable state regulations, and are the same materials previously approved by LEA LAND, LLC

R

PRINTED/TYPED NAME

SIGNATURE

DATE

T

16. TRANSPORTER (1)

NAME:

WILBROS CONST.

TEXAS I.D. NO.

IN CASE OF EMERGENCY CONTACT: ALBERT MADRID

EMERGENCY PHONE: (575) 706-0566

R

18. TRANSPORTER (1): Acknowledgment of receipt of material

PRINTED/TYPED NAME

C Bryant

SIGNATURE

C Bryant

DATE

12/10/2014

D

PERMIT NO.

WM-01-035 - New Mexico

ADDRESS:

Mile Marker 64, U.S. Hwy 62/180,
30 Miles East of Carlsbad, NM

PHONE:

575-887-4048

F

20. COMMENTS

I

21. DISPOSAL FACILITY'S CERTIFICATION: I hereby certify that the above described wastes were delivered to this facility, that the facility is authorized and permitted to receive such wastes.

S

AUTHORIZED SIGNATURE

Santa Monzalez

CELL NO.

DATE

12/10/2014

TIME

9:45

LEA LAND DISPOSAL SITE NEW MEXICO

MILE MARKER #64 US HWY 62/180 • 30 MILES EAST OF CARLSBAD, NM • PHONE (575) 887-4048

LEA LAND, LLC

1300 WEST MAIN STREET • OKLAHOMA CITY, OK 73106 • PHONE (405) 236-4257

J BARC

NON-HAZARDOUS WASTE MANIFEST

NO 105638

1. PAGE ___ OF ___

2. TRAILER NO. #05

G E N E R A T O R	3. COMPANY NAME ENTERPRISE OPER. PROD. LLC		4. ADDRESS 2182 Commerce		5. PICK-UP DATE 12/10/2014	
	PHONE NO. 713) 381-6500		CITY STATE ZIP Midland TX 79703		6. TNRCC I.D. NO.	
	7. NAME OR DESCRIPTION OF WASTE SHIPPED:				8. CONTAINERS No. Type	9. TOTAL QUANTITY
	a. Non-Regulated, Non Hazardous Waste				1 CM	
T R A N S P O R T E R S	b.					
	c.					
	d. WT: 42420 35020					
	12. COMMENTS OR SPECIAL INSTRUCTIONS: B7 PIPELINE TOTAL 78040				13. WASTE PROFILE NO. 503419	
D I S P O S I T A L Y	14. IN CASE OF EMERGENCY OR SPILL, CONTACT					
	NAME Kin Slaughter		PHONE NO. 575-887-4048		24-HOUR EMERGENCY NO.	
	15. GENERATOR'S CERTIFICATION: I Hereby declare that the contents of this consignment are fully and accurately described above by proper shipping name and are classified, packed, marked, and labeled, and are in all respects in proper condition for transport by highway according to applicable international and national government regulations, including applicable state regulations, and are the same materials previously approved by LEA LAND, LLC					
	PRINTED/TYPED NAME		SIGNATURE		DATE	
D I S P O S I T A L Y	16. TRANSPORTER (1)		17. TRANSPORTER (2)			
	NAME: WLBROS CONST.		NAME:			
	TEXAS I.D. NO.		TEXAS I.D. NO.			
	IN CASE OF EMERGENCY CONTACT: ALBERT MADRID		IN CASE OF EMERGENCY CONTACT:			
D I S P O S I T A L Y	EMERGENCY PHONE: (575) 706-0566		EMERGENCY PHONE:			
	18. TRANSPORTER (1): Acknowledgment of receipt of material		19. TRANSPORTER (2): Acknowledgment of receipt of material			
	PRINTED/TYPED NAME Dusty Young		PRINTED/TYPED NAME			
	SIGNATURE Dusty Young		SIGNATURE			
D I S P O S I T A L Y	DATE 12/10/2014		DATE			
	Lea Land, LLC		ADDRESS: Mile Marker 64, U.S. Hwy 62/180, 30 Miles East of Carlsbad, NM		PHONE: 575-887-4048	
	PERMIT NO. WM-01-035 - New Mexico		20. COMMENTS			
	21. DISPOSAL FACILITY'S CERTIFICATION: I Hereby certify that the above described wastes were delivered to this facility, that the facility is authorized and permitted to receive such wastes.					
D I S P O S I T A L Y	AUTHORIZED SIGNATURE Santos Gonzalez		CELL NO.		DATE 12/10/2014	
					TIME 9:45	

GENERATOR: COPIES 1 & 6

DISPOSAL SITE: COPIES 2 & 3

TRANSPORTERS: COPIES 4 & 5

COPY 1

LEA LAND DISPOSAL SITE NEW MEXICO

MILE MARKER #64 US HWY 62/180 • 30 MILES EAST OF CARLSBAD, NM • PHONE (575) 887-4048

LEA LAND, LLC

1300 WEST MAIN STREET • OKLAHOMA CITY, OK 73106 • PHONE (405) 236-4257

Scooters

NON-HAZARDOUS WASTE MANIFEST

NO **105696**

1. PAGE OF

2. TRAILER NO. **#01**

G
E
N
E
R
A
T
O
R

3. COMPANY NAME

ENTERPRISE OPER. PROD. LLC
PHONE NO.

4. ADDRESS

2162 Commerce
CITY STATE ZIP

5. PICK-UP DATE

12/11/2014

6. TNRCC I.D. NO.

713) 381-0500

Midland

TX

79703

7. NAME OR DESCRIPTION OF WASTE SHIPPED:

a.
Non-Regulated, Non-Hazardous Waste

8. CONTAINERS

No. Type

9. TOTAL QUANTITY

10. UNIT Wt/Vol.

11. TEXAS WASTE ID

1 CM

d. **37,620 41,480 39,100**

12. COMMENTS OR SPECIAL INSTRUCTIONS:

B 7 PIPELINE

TOTAL 118,200

13. WASTE PROFILE NO.

503419

14. IN CASE OF EMERGENCY OR SPILL, CONTACT

NAME

PHONE NO

24-HOUR EMERGENCY NO.

Kim Slaughter

575-887-4048

15. GENERATOR'S CERTIFICATION: I hereby declare that the contents of this consignment are fully and accurately described above by proper shipping name and are classified, packed, marked, and labeled, and are in all respects in proper condition for transport by highway according to applicable international and national government regulations, including applicable state regulations, and are the same materials previously approved by LEA LAND, LLC

PRINTED/TYPED NAME

SIGNATURE

DATE

T
R
A
N
S
P
O
R
T
E
R
S

16. TRANSPORTER (1)

NAME:

WLBROS CONST.

TEXAS I.D. NO.

IN CASE OF EMERGENCY CONTACT:

ALBERT MADRID

EMERGENCY PHONE:

(575) 706-0566

17. TRANSPORTER (2)

NAME:

TEXAS I.D. NO.

IN CASE OF EMERGENCY CONTACT:

EMERGENCY PHONE:

18. TRANSPORTER (1): Acknowledgment of receipt of material

PRINTED/TYPED NAME

Bryant

SIGNATURE

Bryant

DATE

12/11/2014

19. TRANSPORTER (2): Acknowledgment of receipt of material

PRINTED/TYPED NAME

SIGNATURE

DATE

D
I
S
P
O
S
I
T
A
L
Y

Lea Land, LLC

ADDRESS:

Mile Marker 64, U.S. Hwy 62/180,
30 Miles East of Carlsbad, NM

PHONE:

575-887-4048

PERMIT NO.

WM-01-035 - New Mexico

20. COMMENTS

21. DISPOSAL FACILITY'S CERTIFICATION: I hereby certify that the above described wastes were delivered to this facility, that the facility is authorized and permitted to receive such wastes.

AUTHORIZED SIGNATURE

Antonia Gonzalez

CELL NO.

DATE

12/11/2014

TIME

9:20

GENERATOR: COPIES 1 & 6

DISPOSAL SITE: COPIES 2 & 3

TRANSPORTERS: COPIES 4 & 5

COPY 1

LEA LAND DISPOSAL SITE NEW MEXICO

MILE MARKER #64 US HWY 62/180 • 30 MILES EAST OF CARLSBAD, NM • PHONE (575) 887-4048

LEA LAND, LLC

1300 WEST MAIN STREET • OKLAHOMA CITY, OK 73106 • PHONE (405) 236-4257

J. Barc

NON-HAZARDOUS WASTE MANIFEST

NO 105697

1. PAGE ___ OF ___

2. TRAILER NO. # 05

G

3. COMPANY NAME

ENTERPRISE OPER. PROD. LLC
PHONE NO.

4. ADDRESS

2182 Commerce
CITY STATE ZIP

5. PICK-UP DATE

12/11/2014

6. TNRCC I.D. NO.

E

(713) 381-8500

Midland

TX

79702

N

7. NAME OR DESCRIPTION OF WASTE SHIPPED:

a. ~~Non-Regulated, Non-Hazardous Waste~~

8. CONTAINERS
No. Type

9. TOTAL
QUANTITY

10. UNIT
Wt/Vol.

11. TEXAS
WASTE ID #

E

b.

1 CM

R

d. WT: 47540 40100

A

B 7 PIPELINE

TOTAL 87,140

13. WASTE PROFILE NO.

503419

T

14. IN CASE OF EMERGENCY OR SPILL, CONTACT

NAME

PHONE NO

24-HOUR EMERGENCY NO.

Kim Slaughter

575-887-4048

O

15. GENERATOR'S CERTIFICATION: I hereby declare that the contents of this consignment are fully and accurately described above by proper shipping name and are classified, packed, marked, and labeled, and are in all respects in proper condition for transport by highway according to applicable international and national government regulations, including applicable state regulations, and are the same materials previously approved by LEA LAND, LLC

R

PRINTED/TYPED NAME

SIGNATURE

DATE

T

16. TRANSPORTER (1)

NAME:

WILBROS CONST.

TEXAS I.D. NO.

IN CASE OF EMERGENCY CONTACT:

ALBERT MADRID

EMERGENCY PHONE:

(575) 706-0566

R

17. TRANSPORTER (2)

NAME:

TEXAS I.D. NO.

IN CASE OF EMERGENCY CONTACT:

EMERGENCY PHONE:

S

18. TRANSPORTER (1): Acknowledgment of receipt of material

PRINTED/TYPED NAME Dusty Young

SIGNATURE Dusty Young DATE 12/11/2014

19. TRANSPORTER (2): Acknowledgment of receipt of material

PRINTED/TYPED NAME _____

SIGNATURE _____ DATE _____

D
F
I
S
C
P
I
O
L
S
I
A
T
Y

Lea Land, LLC

ADDRESS:

Mile Marker 64, U.S. Hwy 62/180,
30 Miles East of Carlsbad, NM

PHONE:

575-887-4048

PERMIT NO.

WM-01-035 - New Mexico

20. COMMENTS

21. DISPOSAL FACILITY'S CERTIFICATION: I hereby certify that the above described wastes were delivered to this facility, that the facility is authorized and permitted to receive such wastes.

AUTHORIZED SIGNATURE

CELL NO.

DATE

TIME

12/11/2014

11:40

GENERATOR: COPIES 1 & 6

DISPOSAL SITE: COPIES 2 & 3

TRANSPORTERS: COPIES 4 & 5

COPY 1

LEA LAND DISPOSAL SITE NEW MEXICO

MILE MARKER #64 US HWY 62/180 • 30 MILES EAST OF CARLSBAD, NM • PHONE (575) 887-4048

LEA LAND, LLC

1300 WEST MAIN STREET • OKLAHOMA CITY, OK 73106 • PHONE (405) 236-4257

Barc

NON-HAZARDOUS WASTE MANIFEST

NO 105698

1. PAGE ___ OF ___

2. TRAILER NO. #06

G E N E R A T O R	3. COMPANY NAME ENTERPRISE OPER. PROD. LLC PHONE NO. (713) 381-6500		4. ADDRESS 2182 Commerce CITY STATE ZIP Midland TX 79703		5. PICK-UP DATE 12/11/2014	
	6. TNRCC I.D. NO.					
	7. NAME OR DESCRIPTION OF WASTE SHIPPED: a. Non-Regulated, Non-Hazardous Waste b. c. d. AT 39,080 34,420				8. CONTAINERS No. Type 1 CM	
	9. TOTAL QUANTITY 10. UNIT Wt/Vol. 11. TEXAS WASTE ID #					
A T T R I B U T E	12. COMMENTS OR SPECIAL INSTRUCTIONS: B 7 PIPELINE TOTAL 73,500				13. WASTE PROFILE NO. 503419	
	14. IN CASE OF EMERGENCY OR SPILL, CONTACT NAME PHONE NO. 24-HOUR EMERGENCY NO. Kin Slaughter 575-887-4048					
O F F I C E	15. GENERATOR'S CERTIFICATION: I hereby declare that the contents of this consignment are fully and accurately described above by proper shipping name and are classified, packed, marked, and labeled, and are in all respects in proper condition for transport by highway according to applicable international and national government regulations, including applicable state regulations, and are the same materials previously approved by LEA LAND, LLC					
	PRINTED/TYPED NAME		SIGNATURE		DATE	
T R A N S P O R T E R S	16. TRANSPORTER (1) NAME: WLBROS CONST. TEXAS I.D. NO. IN CASE OF EMERGENCY CONTACT: ALBERT MADRID EMERGENCY PHONE: (575) 706-0566		17. TRANSPORTER (2) NAME: TEXAS I.D. NO. IN CASE OF EMERGENCY CONTACT: EMERGENCY PHONE:			
	18. TRANSPORTER (1): Acknowledgment of receipt of material PRINTED/TYPED NAME Joe Pulice SIGNATURE [Signature] DATE 12/11/2014		19. TRANSPORTER (2): Acknowledgment of receipt of material PRINTED/TYPED NAME SIGNATURE DATE			
	D I S C I P L I N A R Y		ADDRESS: Mile Marker 64, U.S. Hwy 62/180, 30 Miles East of Carlsbad, NM PHONE: 575-887-4048			
	PERMIT NO. WM-01-035 - New Mexico		20. COMMENTS			
D I S C I P L I N A R Y	21. DISPOSAL FACILITY'S CERTIFICATION: I hereby certify that the above described wastes were delivered to this facility, that the facility is authorized and permitted to receive such wastes.					
	AUTHORIZED SIGNATURE [Signature]		CELL NO.		DATE 12/11/2014	TIME 11:40

LEA LAND DISPOSAL SITE NEW MEXICO

MILE MARKER #64 US HWY 62/180 • 30 MILES EAST OF CARLSBAD, NM • PHONE (575) 887-4048

LEA LAND, LLC

1300 WEST MAIN STREET • OKLAHOMA CITY, OK 73106 • PHONE (405) 236-4257

Scrapers
#01

NON-HAZARDOUS WASTE MANIFEST

NO 105738

1. PAGE ___ OF ___

2. TRAILER NO. #01

G E N E R A T O R	3. COMPANY NAME ENTERPRISE OPER. PROD. LLC PHONE NO. (713) 381-6500	4. ADDRESS 2182 Commerce CITY Midland STATE TX ZIP 79703	5. PICK-UP DATE 12/12/2014	6. TNRCC I.D. NO.		
	7. NAME OR DESCRIPTION OF WASTE SHIPPED: a. <u>Non-Regulated, Non Hazardous Waste</u> b. <u>43,200</u> c. <u>WT: 39,260 34,680 41900</u> d. <u>WT: 39,260 34,680 41900</u>		8. CONTAINERS No. Type 1 CM	9. TOTAL QUANTITY	10. UNIT Wt/Vol.	11. TEXAS WASTE ID #
A T T R I B U T E R	12. COMMENTS OR SPECIAL INSTRUCTIONS: B 7 PIPELINE <u>TOTAL 159,040</u>		13. WASTE PROFILE NO. 503419			
	14. IN CASE OF EMERGENCY OR SPILL, CONTACT NAME PHONE NO 24-HOUR EMERGENCY NO. Kin Slaughter 575-887-4048					
O F F I C E	15. GENERATOR'S CERTIFICATION: I Hereby declare that the contents of this consignment are fully and accurately described above by proper shipping name and are classified, packed, marked, and labeled, and are in all respects in proper condition for transport by highway according to applicable international and national government regulations, including applicable state regulations, and are the same materials previously approved by LEA LAND, LLC					
	PRINTED/TYPED NAME		SIGNATURE		DATE	
T R A N S P O R T E R S	16. TRANSPORTER (1) NAME: <u>WLBROS CONST.</u> TEXAS I.D. NO. IN CASE OF EMERGENCY CONTACT: <u>ALBERT MADRID</u> EMERGENCY PHONE: <u>(575) 706-0566</u>		17. TRANSPORTER (2) NAME: TEXAS I.D. NO. IN CASE OF EMERGENCY CONTACT: EMERGENCY PHONE:			
	18. TRANSPORTER (1): Acknowledgment of receipt of material PRINTED/TYPED NAME <u>Bryant</u> SIGNATURE <u>Bryant</u> DATE <u>12/12/2014</u>		19. TRANSPORTER (2): Acknowledgment of receipt of material PRINTED/TYPED NAME SIGNATURE DATE			
D I S P O S I T O R Y	Lea Land, LLC		ADDRESS: Mile Marker 64, U.S. Hwy 62/180, 30 Miles East of Carlsbad, NM		PHONE: 575-887-4048	
	PERMIT NO. WM-01-035 - New Mexico		20. COMMENTS			
L E A L A N D	21. DISPOSAL FACILITY'S CERTIFICATION: I Hereby certify that the above described wastes were delivered to this facility, that the facility is authorized and permitted to receive such wastes.					
	AUTHORIZED SIGNATURE <u>Anta Gonzalez</u>		CELL NO. <u> </u>		DATE 12/12/2014	TIME 8:35

GENERATOR: COPIES 1 & 6

DISPOSAL SITE: COPIES 2 & 3

TRANSPORTERS: COPIES 4 & 5

LEA LAND DISPOSAL SITE NEW MEXICO

MILE MARKER #64 US HWY 62/180 • 30 MILES EAST OF CARLSBAD, NM • PHONE (575) 887-4048

LEA LAND, LLC

1300 WEST MAIN STREET • OKLAHOMA CITY, OK 73106 • PHONE (405) 236-4257

Scooters

NON-HAZARDOUS WASTE MANIFEST

NO **105820**

1. PAGE ___ OF ___

2. TRAILER NO. **#01**

G E N E R A T O R	3. COMPANY NAME ENTERPRISE OPER. PROD. LLC		4. ADDRESS 2182 Commerce		5. PICK-UP DATE 12/15/2014	
	PHONE NO. (713) 381-8500		CITY Midland	STATE TX	ZIP 79703	6. TNRCC I.D. NO.
	7. NAME OR DESCRIPTION OF WASTE SHIPPED:				8. CONTAINERS No. Type	9. TOTAL QUANTITY
	a. Non-Regulated, Non Hazardous Waste				1 CM	
T R A N S P O R T E R S	b.					
	c.					
	WT: 46,840 42,240 44,320					
	12. COMMENTS OR SPECIAL INSTRUCTIONS: B 7 PIPELINE				13. WASTE PROFILE NO. 503419	
D I S P O S I T O R	14. IN CASE OF EMERGENCY OR SPILL, CONTACT					
	NAME Kin Slaughter		PHONE NO. 575-887-4048		24-HOUR EMERGENCY NO.	
	15. GENERATOR'S CERTIFICATION: I Hereby declare that the contents of this consignment are fully and accurately described above by proper shipping name and are classified, packed, marked, and labeled, and are in all respects in proper condition for transport by highway according to applicable international and national government regulations, including applicable state regulations, and are the same materials previously approved by LEA LAND, LLC					
	PRINTED/TYPED NAME			SIGNATURE		
D I S P O S I T O R	16. TRANSPORTER (1)			17. TRANSPORTER (2)		
	NAME: WLBROS CONST.			NAME:		
	TEXAS I.D. NO.			TEXAS I.D. NO.		
	IN CASE OF EMERGENCY CONTACT: ALBERT MADRID (575) 706-0586			IN CASE OF EMERGENCY CONTACT:		
D I S P O S I T O R	EMERGENCY PHONE:			EMERGENCY PHONE:		
	18. TRANSPORTER (1): Acknowledgment of receipt of material			19. TRANSPORTER (2): Acknowledgment of receipt of material		
	PRINTED/TYPED NAME Albert Madrid			PRINTED/TYPED NAME		
	SIGNATURE Albert Madrid DATE 12/15/2014			SIGNATURE DATE		
D I S P O S I T O R	Lea Land, LLC		ADDRESS: Mile Marker 64, U.S. Hwy 62/180, 30 Miles East of Carlsbad, NM		PHONE: 575-887-4048	
	PERMIT NO. WM-01-035 - New Mexico		20. COMMENTS			
	21. DISPOSAL FACILITY'S CERTIFICATION: I Hereby certify that the above described wastes were delivered to this facility, that the facility is authorized and permitted to receive such wastes.					
	AUTHORIZED SIGNATURE Santos Gonzalez		CELL NO.		DATE 12/15/2014	TIME 10:15

GENERATOR: COPIES 1 & 6

DISPOSAL SITE: COPIES 2 & 3

TRANSPORTERS: COPIES 4 & 5

LEA LAND DISPOSAL SITE NEW MEXICO

MILE MARKER #64 US HWY 62/180 • 30 MILES EAST OF CARLSBAD, NM • PHONE (575) 887-4048

LEA LAND, LLC

1300 WEST MAIN STREET • OKLAHOMA CITY, OK 73106 • PHONE (405) 236-4257

Scooters

NON-HAZARDOUS WASTE MANIFEST

NO 105858

1. PAGE ___ OF ___

2. TRAILER NO. #101

G
E
N
E
R
A
T
O
R

3. COMPANY NAME
ENTERPRISE OPER. PROD. LLC

4. ADDRESS
2162 Commerce

5. PICK-UP DATE
12/16/2014

PHONE NO.
(713) 381-8500

CITY
Midland

STATE
TX

ZIP
79703

6. TNRCC I.D. NO.

7. NAME OR DESCRIPTION OF WASTE SHIPPED:

8. CONTAINERS
No. Type

9. TOTAL
QUANTITY

10. UNIT
Wt/Vol.

11. TEXAS
WASTE ID #

a. Non-Regulated, Non Hazardous Waste

1 CM

b.

c.

WT: 48440 43440

12. COMMENTS OR SPECIAL INSTRUCTIONS:
B 7 PIPELINE

13. WASTE PROFILE NO.
503419

TOTAL 91880

14. IN CASE OF EMERGENCY OR SPILL, CONTACT

NAME
Kin Slaughter

PHONE NO
575-887-4048

24-HOUR EMERGENCY NO.

15. GENERATOR'S CERTIFICATION: I Hereby declare that the contents of this consignment are fully and accurately described above by proper shipping name and are classified, packed, marked, and labeled, and are in all respects in proper condition for transport by highway according to applicable international and national government regulations, including applicable state regulations, and are the same materials previously approved by LEA LAND, LLC

PRINTED/TYPED NAME

SIGNATURE

DATE

T
R
A
N
S
P
O
R
T
E
R
S

16. TRANSPORTER (1)
NAME: WLBROS CONST.

TEXAS I.D. NO.

IN CASE OF EMERGENCY CONTACT: ALBERT MADRID
(575) 708-0566

EMERGENCY PHONE:

17. TRANSPORTER (2)

NAME:

TEXAS I.D. NO.

IN CASE OF EMERGENCY CONTACT:

EMERGENCY PHONE:

18. TRANSPORTER (1): Acknowledgment of receipt of material

19. TRANSPORTER (2): Acknowledgment of receipt of material

PRINTED/TYPED NAME

PRINTED/TYPED NAME

SIGNATURE

DATE

SIGNATURE

DATE

D
I
S
P
O
S
I
T
O
R
Y

Lea Land, LLC

ADDRESS:

Mile Marker 64, U.S. Hwy 62/180,
30 Miles East of Carlsbad, NM

PHONE:

575-887-4048

PERMIT NO.

WM-01-035 - New Mexico

20. COMMENTS

21. DISPOSAL FACILITY'S CERTIFICATION: I Hereby certify that the above described wastes were delivered to this facility, that the facility is authorized and permitted to receive such wastes.

AUTHORIZED SIGNATURE

CELL NO.

DATE
12/16/2014

TIME

11:05

GENERATOR: COPIES 1 & 6

DISPOSAL SITE: COPIES 2 & 3

TRANSPORTERS: COPIES 4 & 5

LEA LAND DISPOSAL SITE NEW MEXICO

MILE MARKER #64 US HWY 62/180 • 30 MILES EAST OF CARLSBAD, NM • PHONE (575) 887-4048

LEA LAND, LLC

1300 WEST MAIN STREET • OKLAHOMA CITY, OK 73106 • PHONE (405) 236-4257

J Bar C
#02

NON-HAZARDOUS WASTE MANIFEST

NO 105859

1. PAGE ___ OF ___

2. TRAILER NO. #02

G
E
N
E
R
A
T
O
R

3. COMPANY NAME
ENTERPRISE OPER. PROD. LLC

4. ADDRESS
2182 Commerce

5. PICK-UP DATE
12/16/2014

PHONE NO.
(713) 381-6500

CITY
Midland

STATE
TX

ZIP
79703

6. TNRCC I.D. NO.

7. NAME OR DESCRIPTION OF WASTE SHIPPED:

8. CONTAINERS
No. Type

9. TOTAL
QUANTITY

10. UNIT
Wt/Vol.

11. TEXAS
WASTE ID #

Non-Regulated, Non Hazardous Waste

1 CM

b.

c.

WT: 37780 37640

12. COMMENTS OR SPECIAL INSTRUCTIONS:
B 7 PIPELINE

13. WASTE PROFILE NO.

503419

TOTAL 75420

14. IN CASE OF EMERGENCY OR SPILL, CONTACT

NAME
Kin Slaughter

PHONE NO.
575-887-4048

24-HOUR EMERGENCY NO.

15. GENERATOR'S CERTIFICATION: I Hereby declare that the contents of this consignment are fully and accurately described above by proper shipping name and are classified, packed, marked, and labeled, and are in all respects in proper condition for transport by highway according to applicable international and national government regulations, including applicable state regulations, and are the same materials previously approved by LEA LAND, LLC

PRINTED/TYPED NAME

SIGNATURE

DATE

T
R
A
N
S
P
O
R
T
E
R
S

16. TRANSPORTER (1)

NAME: WLBROS CONST.

TEXAS I.D. NO.

IN CASE OF EMERGENCY CONTACT: ALBERT MADRID
(575) 706-0566

EMERGENCY PHONE:

18. TRANSPORTER (1): Acknowledgment of receipt of material

PRINTED/TYPED NAME

Justin Young

12/16/2014

SIGNATURE

DATE

17. TRANSPORTER (2)

NAME:

TEXAS I.D. NO.

IN CASE OF EMERGENCY CONTACT:

EMERGENCY PHONE:

19. TRANSPORTER (2): Acknowledgment of receipt of material

PRINTED/TYPED NAME

SIGNATURE

DATE

D
I
S
P
O
S
I
T
A
T
O
R

Lea Land, LLC

ADDRESS:

Mile Marker 64, U.S. Hwy 62/180,
30 Miles East of Carlsbad, NM

PHONE:

575-887-4048

PERMIT NO.

WM-01-035 - New Mexico

20. COMMENTS

21. DISPOSAL FACILITY'S CERTIFICATION: I Hereby certify that the above described wastes were delivered to this facility, that the facility is authorized and permitted to receive such wastes.

AUTHORIZED SIGNATURE

CELL NO.

DATE
12/16/2014

TIME

11:10

GENERATOR: COPIES 1 & 6

DISPOSAL SITE: COPIES 2 & 3

TRANSPORTERS: COPIES 4 & 5

LEA LAND DISPOSAL SITE NEW MEXICO

MILE MARKER #64 US HWY 62/180 • 30 MILES EAST OF CARLSBAD, NM • PHONE (575) 887-4048

LEA LAND, LLC

1300 WEST MAIN STREET • OKLAHOMA CITY, OK 73106 • PHONE (405) 236-4257

J BarC

NON-HAZARDOUS WASTE MANIFEST

NO 105862

1. PAGE ___ OF ___

2. TRAILER NO. # DL

G
E
N
E
R
A
T
O
R

3. COMPANY NAME
ENTERPRISE OPER. PROD. LLC

4. ADDRESS
2182 Commerce

5. PICK-UP DATE
12/16/2014

PHONE NO.
(713) 381-6500

CITY
Midland

STATE
TX

ZIP
79703

6. TNRCC I.D. NO.

7. NAME OR DESCRIPTION OF WASTE SHIPPED:

8. CONTAINERS
No. Type

9. TOTAL
QUANTITY

10. UNIT
Wt/Vol.

11. TEXAS
WASTE ID #

a. Non-Regulated, Non Hazardous Waste

1 CM

b.

c.

WT: 47960 45040

12. COMMENTS OR SPECIAL INSTRUCTIONS:
B 7 PIPELINE

TOTAL 93,000

13. WASTE PROFILE NO.

503419

14. IN CASE OF EMERGENCY OR SPILL, CONTACT

NAME
Kin Slaughter

PHONE NO
575-887-4048

24-HOUR EMERGENCY NO.

15. GENERATOR'S CERTIFICATION: I Hereby declare that the contents of this consignment are fully and accurately described above by proper shipping name and are classified, packed, marked, and labeled, and are in all respects in proper condition for transport by highway according to applicable international and national government regulations, including applicable state regulations, and are the same materials previously approved by LEA LAND, LLC

PRINTED/TYPED NAME

SIGNATURE

DATE

T
R
A
N
S
P
O
R
T
E
R
S

16. TRANSPORTER (1)
NAME: WLBROS CONST.

TEXAS I.D. NO.

IN CASE OF EMERGENCY CONTACT: ALBERT MADRID
(575) 706-0566

EMERGENCY PHONE:

18. TRANSPORTER (1): Acknowledgment of receipt of material

PRINTED/TYPED NAME Joe Pulice

12/16/2014

SIGNATURE: [Signature] DATE

17. TRANSPORTER (2)

NAME:

TEXAS I.D. NO.

IN CASE OF EMERGENCY CONTACT:

EMERGENCY PHONE:

19. TRANSPORTER (2): Acknowledgment of receipt of material

PRINTED/TYPED NAME

SIGNATURE DATE

D
I
S
P
O
S
I
T
A
T
O
R

Lea Land, LLC

ADDRESS:

Mile Marker 64, U.S. Hwy 62/180,
30 Miles East of Carlsbad, NM

PHONE:

575-887-4048

PERMIT NO.

WM-01-035 - New Mexico

20. COMMENTS

21. DISPOSAL FACILITY'S CERTIFICATION: I Hereby certify that the above described wastes were delivered to this facility, that the facility is authorized and permitted to receive such wastes.

AUTHORIZED SIGNATURE

CELL NO.

DATE
12/16/2014

TIME
1:10

LEA LAND DISPOSAL SITE NEW MEXICO

MILE MARKER #64 US HWY 62/180 • 30 MILES EAST OF CARLSBAD, NM • PHONE (575) 887-4048

LEA LAND, LLC

1300 WEST MAIN STREET • OKLAHOMA CITY, OK 73106 • PHONE (405) 236-4257

J. BarC

NON-HAZARDOUS WASTE MANIFEST

NO 105863

1. PAGE ___ OF ___

2. TRAILER NO. # 05

G E N E R A T O R	3. COMPANY NAME ENTERPRISE OPER. PROD. LLC		4. ADDRESS 2162 Commerce		5. PICK-UP DATE 12/16/2014	
	PHONE NO. (713) 381-8500		CITY Midland	STATE TX	ZIP 79703	6. TNRCC I.D. NO.
	7. NAME OR DESCRIPTION OF WASTE SHIPPED:				8. CONTAINERS No. Type	9. TOTAL QUANTITY
	Non-Regulated, Non Hazardous Waste				1	CM
	b.					
T R A N S P O R T E R S	c.					
	WT: 47240 43360					
	12. COMMENTS OR SPECIAL INSTRUCTIONS: B 7 PIPELINE				13. WASTE PROFILE NO. 503419	
	Total 90,600					
	14. IN CASE OF EMERGENCY OR SPILL, CONTACT					
D I S P O S I T Y	NAME Kin Slaughter		PHONE NO. 575-887-4048		24-HOUR EMERGENCY NO.	
	15. GENERATOR'S CERTIFICATION: I Hereby declare that the contents of this consignment are fully and accurately described above by proper shipping name and are classified, packed, marked, and labeled, and are in all respects in proper condition for transport by highway according to applicable international and national government regulations, including applicable state regulations, and are the same materials previously approved by LEA LAND, LLC					
	PRINTED/TYPED NAME		SIGNATURE		DATE	
	16. TRANSPORTER (1)		17. TRANSPORTER (2)			
	NAME: WLBROS CONST.		NAME:			
TEXAS I.D. NO.		TEXAS I.D. NO.				
IN CASE OF EMERGENCY CONTACT: ALBERT MADRID (575) 706-0586		IN CASE OF EMERGENCY CONTACT:				
EMERGENCY PHONE:		EMERGENCY PHONE:				
18. TRANSPORTER (1): Acknowledgment of receipt of material		19. TRANSPORTER (2): Acknowledgment of receipt of material				
PRINTED/TYPED NAME: Dusty Young		PRINTED/TYPED NAME				
SIGNATURE: [Signature] DATE: 12/16/2014		SIGNATURE DATE				
D I S P O S I T Y	Lea Land, LLC		ADDRESS: Mile Marker 64, U.S. Hwy 62/180, 30 Miles East of Carlsbad, NM		PHONE: 575-887-4048	
	PERMIT NO. WM-01-035 - New Mexico		20. COMMENTS			
	21. DISPOSAL FACILITY'S CERTIFICATION: I Hereby certify that the above described wastes were delivered to this facility, that the facility is authorized and permitted to receive such wastes.					
	AUTHORIZED SIGNATURE [Signature]		CELL NO.		DATE 12/16/2014	TIME 1:20

GENERATOR: COPIES 1 & 6

DISPOSAL SITE: COPIES 2 & 3

TRANSPORTERS: COPIES 4 & 5

LEA LAND DISPOSAL SITE NEW MEXICO

MILE MARKER #64 US HWY 62 180 • 30 MILES EAST OF CARLSBAD, NM • PHONE (575) 887-4048

LEA LAND, LLC

1300 WEST MAIN STREET • OKLAHOMA CITY, OK 73106 • PHONE (405) 236-4257

Scrooters

NON-HAZARDOUS WASTE MANIFEST

NO **105883**

1. PAGE ___ OF ___

2. TRAILER NO. **#01**

G

3. COMPANY NAME

ENTERPRISE OPER. PROD. LLC
PHONE NO.

4. ADDRESS

2162 Commerce
CITY STATE ZIP

5. PICK-UP DATE

12/17/2014

6. TNRCC I.D. NO.

E

(713) 381-8500

Midland TX 79703

N

7. NAME OR DESCRIPTION OF WASTE SHIPPED:

a. Non-Regulated, Non Hazardous Waste
b.

E

c.

R

d. WT: 52060

8. CONTAINERS

No. Type

1 CM

9. TOTAL QUANTITY

10. UNIT Wt/Vol.

11. TEXAS WASTE ID

A

12. COMMENTS OR SPECIAL INSTRUCTIONS:

B 7 PIPELINE

13. WASTE PROFILE NO.

503419

T

14. IN CASE OF EMERGENCY OR SPILL, CONTACT

NAME

PHONE NO

24-HOUR EMERGENCY NO.

Kin Slaughter

575-887-4048

O

15. GENERATOR'S CERTIFICATION: I hereby declare that the contents of this consignment are fully and accurately described above by proper shipping name and are classified, packed, marked, and labeled, and are in all respects in proper condition for transport by highway according to applicable international and national government regulations, including applicable state regulations, and are the same materials previously approved by LEA LAND, LLC

R

PRINTED/TYPED NAME

SIGNATURE

DATE

T

16. TRANSPORTER (1)

NAME:

WLBROS CONST.

TEXAS I.D. NO.

IN CASE OF EMERGENCY CONTACT:

ALBERT MADRID

EMERGENCY PHONE:

(575) 706-0586

R

18. TRANSPORTER (1): Acknowledgment of receipt of material

PRINTED/TYPED NAME

SIGNATURE

DATE

12/17/2014

D

Lea Land, LLC

ADDRESS:

Mile Marker 64, U.S. Hwy 62/180,
30 Miles East of Carlsbad, NM

PHONE:

575-887-4048

PERMIT NO.

WM-01-035 - New Mexico

20. COMMENTS

21. DISPOSAL FACILITY'S CERTIFICATION: I hereby certify that the above described wastes were delivered to this facility, that the facility is authorized and permitted to receive such wastes.

AUTHORIZED SIGNATURE

CELL NO.

DATE

TIME

12/17/2014

9:30

GENERATOR: COPIES 1 & 6

DISPOSAL SITE: COPIES 2 & 3

TRANSPORTERS: COPIES 4 & 5

LEA LAND DISPOSAL SITE NEW MEXICO

MILE MARKER #64 US HWY 62/180 • 30 MILES EAST OF CARLSBAD, NM • PHONE (575) 887-4048

LEA LAND, LLC

1300 WEST MAIN STREET • OKLAHOMA CITY, OK 73106 • PHONE (405) 236-4257

J Barc
02

NON-HAZARDOUS WASTE MANIFEST

NO 105020

1. PAGE ___ OF ___

2. TRAILER NO.

02

G E N E R A T O R	3. COMPANY NAME ENTERPRISE OPER. PROD. LLC PHONE NO. (713) 381-6500		4. ADDRESS 2162 Commerce CITY STATE ZIP Midland TX 79703		5. PICK-UP DATE 11/21/2014 6. TNRCC I.D. NO.		
	7. NAME OR DESCRIPTION OF WASTE SHIPPED: a. Non-Regulated, Non Hazardous Waste b. c. d. WT: 39980			8. CONTAINERS No. Type 1 CM	9. TOTAL QUANTITY	10. UNIT Wt/Vol.	11. TEXAS WASTE ID #
	12. COMMENTS OR SPECIAL INSTRUCTIONS: PIPELINE PO # 14521489				13. WASTE PROFILE NO. 503419		
	14. IN CASE OF EMERGENCY OR SPILL, CONTACT NAME PHONE NO 24-HOUR EMERGENCY NO. Kin Slaughter 575-887-4048						
T R A N S P O R T E R S	15. GENERATOR'S CERTIFICATION: I Hereby declare that the contents of this consignment are fully and accurately described above by proper shipping name and are classified, packed, marked, and labeled, and are in all respects in proper condition for transport by highway according to applicable international and national government regulations, including applicable state regulations, and are the same materials previously approved by LEA LAND, LLC						
	PRINTED/TYPED NAME			SIGNATURE		DATE	
	16. TRANSPORTER (1) NAME: WLBROS CONST. TEXAS I.D. NO. IN CASE OF EMERGENCY CONTACT: ALBERT MADRID EMERGENCY PHONE: (575) 708-0568			17. TRANSPORTER (2) NAME: TEXAS I.D. NO. IN CASE OF EMERGENCY CONTACT: EMERGENCY PHONE:			
	18. TRANSPORTER (1): Acknowledgment of receipt of material PRINTED/TYPED NAME Dusty Young SIGNATURE [Signature] DATE 11/21/2014			19. TRANSPORTER (2): Acknowledgment of receipt of material PRINTED/TYPED NAME SIGNATURE DATE			
D I S P O S I T A L Y	Lea Land, LLC		ADDRESS: Mile Marker 64, U.S. Hwy 62/180, 30 Miles East of Carlsbad, NM			PHONE: 575-887-4048	
	PERMIT NO. WM-01-035 - New Mexico		20. COMMENTS				
	21. DISPOSAL FACILITY'S CERTIFICATION: I Hereby certify that the above described wastes were delivered to this facility, that the facility is authorized and permitted to receive such wastes.						
AUTHORIZED SIGNATURE [Signature]			CELL NO. _____		DATE 11/21/2014		TIME 2:00

LEA LAND DISPOSAL SITE NEW MEXICO

MILE MARKER #64 US HWY 62/180 • 30 MILES EAST OF CARLSBAD, NM • PHONE (575) 887-4048

LEA LAND, LLC

1300 WEST MAIN STREET • OKLAHOMA CITY, OK 73106 • PHONE (405) 236-4257

J Bar c

NON-HAZARDOUS WASTE MANIFEST

NO 105021

1. PAGE ___ OF ___

2. TRAILER NO. # 06

G E N E R A T O R	3. COMPANY NAME ENTERPRISE OPER. PROD. LLC PHONE NO. (713) 381-8500	4. ADDRESS 2162 Commerce CITY Midland STATE TX ZIP 79703	5. PICK-UP DATE 11/21/2014			
	6. TNRCC I.D. NO.					
N E E R A T O R	7. NAME OR DESCRIPTION OF WASTE SHIPPED:		8. CONTAINERS No. Type	9. TOTAL QUANTITY	10. UNIT Wt/Vol.	11. TEXAS WASTE ID #
	a. Non-Regulated, Non Hazardous Waste		1 CM			
	b.					
	c.					
A T O R	d. WT: 50640.					
	12. COMMENTS OR SPECIAL INSTRUCTIONS: PIPELINE PO # 14521488		13. WASTE PROFILE NO. 503419			
T R A N S P O R T E R S	14. IN CASE OF EMERGENCY OR SPILL, CONTACT					
	NAME Kin Slaughter		PHONE NO 575-887-4048		24-HOUR EMERGENCY NO.	
D I S P O S I T Y	15. GENERATOR'S CERTIFICATION: I Hereby declare that the contents of this consignment are fully and accurately described above by proper shipping name and are classified, packed, marked, and labeled, and are in all respects in proper condition for transport by highway according to applicable international and national government regulations, including applicable state regulations, and are the same materials previously approved by LEA LAND, LLC					
	PRINTED/TYPED NAME		SIGNATURE		DATE	
T R A N S P O R T E R S	16. TRANSPORTER (1) NAME: WLBROS CONST. TEXAS I.D. NO. IN CASE OF EMERGENCY CONTACT: ALBERT MADRID EMERGENCY PHONE: (575) 706-0566		17. TRANSPORTER (2) NAME: TEXAS I.D. NO. IN CASE OF EMERGENCY CONTACT:			
	18. TRANSPORTER (1): Acknowledgment of receipt of material PRINTED/TYPED NAME X SIGNATURE X DATE 11/21/2014		19. TRANSPORTER (2): Acknowledgment of receipt of material PRINTED/TYPED NAME SIGNATURE DATE			
D I S P O S I T Y	Lea Land, LLC		ADDRESS: Mile Marker 64, U.S. Hwy 62/180, 30 Miles East of Carlsbad, NM		PHONE: 575-887-4048	
	PERMIT NO. WM-01-035 - New Mexico		20. COMMENTS			
D I S P O S I T Y	21. DISPOSAL FACILITY'S CERTIFICATION: I Hereby certify that the above described wastes were delivered to this facility, that the facility is authorized and permitted to receive such wastes.					
	AUTHORIZED SIGNATURE Donna J. J. J.		CELL NO.		DATE 11/21/2014	TIME 2:05

LEA LAND DISPOSAL SITE NEW MEXICO

MILE MARKER #64 US HWY 62/180 • 30 MILES EAST OF CARLSBAD, NM • PHONE (575) 887-4048

LEA LAND, LLC

1300 WEST MAIN STREET • OKLAHOMA CITY, OK 73106 • PHONE (405) 236-4257

Scooters

NON-HAZARDOUS WASTE MANIFEST

NO **105022**

1. PAGE OF

2. TRAILER NO. # 1

G
E
N
E
R
A
T
O
R

3. COMPANY NAME
ENTERPRISE OPER. PROD. LLC

PHONE NO.
(713) 381-8500

4. ADDRESS
2162 Commerce

CITY STATE ZIP
Midland TX 79703

5. PICK-UP DATE
11/21/2014

6. TNRCC I.D. NO.

7. NAME OR DESCRIPTION OF WASTE SHIPPED:

a. **Non-Regulated, Non Hazardous Waste**

b.

c.

d. **WT: 48020**

8. CONTAINERS
No. Type

1 CM

9. TOTAL
QUANTITY

10. UNIT
Wt/Vol.

11. TEXAS
WASTE ID #

12. COMMENTS OR SPECIAL INSTRUCTIONS:

PIPELINE PO # 14521489

13. WASTE PROFILE NO.

503419

14. IN CASE OF EMERGENCY OR SPILL, CONTACT

NAME

PHONE NO

24-HOUR EMERGENCY NO.

Kin Slaughter

575-887-4048

15. GENERATOR'S CERTIFICATION: I Hereby declare that the contents of this consignment are fully and accurately described above by proper shipping name and are classified, packed, marked, and labeled, and are in all respects in proper condition for transport by highway according to applicable international and national government regulations, including applicable state regulations, and are the same materials previously approved by LEA LAND, LLC

PRINTED/TYPED NAME

SIGNATURE

DATE

T
R
A
N
S
P
O
R
T
E
R
S

16. TRANSPORTER (1)

NAME: **WLBROS CONST.**

TEXAS I.D. NO.

IN CASE OF EMERGENCY CONTACT: **ALBERT MADRID**
(575) 708-0566

EMERGENCY PHONE:

18. TRANSPORTER (1): Acknowledgment of receipt of material

PRINTED/TYPED NAME *x Bryant*

SIGNATURE *x Bryant* DATE **11/21/2014**

17. TRANSPORTER (2)

NAME:

TEXAS I.D. NO.

IN CASE OF EMERGENCY CONTACT:

EMERGENCY PHONE:

19. TRANSPORTER (2): Acknowledgment of receipt of material

PRINTED/TYPED NAME

SIGNATURE DATE

D
I
S
P
O
S
I
T
A
T
I
O
N

Lea Land, LLC

ADDRESS:

**Mile Marker 64, U.S. Hwy 62/180,
30 Miles East of Carlsbad, NM**

PHONE:

575-887-4048

PERMIT NO.

WM-01-035 - New Mexico

20. COMMENTS

21. DISPOSAL FACILITY'S CERTIFICATION: I Hereby certify that the above described wastes were delivered to this facility, that the facility is authorized and permitted to receive such wastes.

AUTHORIZED SIGNATURE

Donna Jewind

CELL NO.

DATE

11/21/2014

TIME

2:10.

LEA LAND DISPOSAL SITE NEW MEXICO

MILE MARKER #64 US HWY 62/180 • 30 MILES EAST OF CARLSBAD, NM • PHONE (575) 887-4048

LEA LAND, LLC

1300 WEST MAIN STREET • OKLAHOMA CITY, OK 73106 • PHONE (405) 236-4257

Scooters

NON-HAZARDOUS WASTE MANIFEST

NO **105066**

1. PAGE OF

2. TRAILER NO. **#01**

G E N E R A T O R	3. COMPANY NAME ENTERPRISE OPER. PROD. LLC PHONE NO. (713) 381-8500	4. ADDRESS 2182 Commerce CITY Midland STATE TX ZIP 79703	5. PICK-UP DATE 11/24/2014			
			6. TNRCC I.D. NO.			
T R A N S P O R T E R S	7. NAME OR DESCRIPTION OF WASTE SHIPPED:		8. CONTAINERS No. Type	9. TOTAL QUANTITY	10. UNIT Wt/Vol.	11. TEXAS WASTE ID #
	a. Non-Regulated, Non Hazardous Waste		1 CM			
	b.					
	c.					
D I S P O S I T A L Y	d. WT: 46,120. 46540					
	12. COMMENTS OR SPECIAL INSTRUCTIONS: PIPELINE PO # 14521489		13. WASTE PROFILE NO. 503418			
D I S P O S I T A L Y	14. IN CASE OF EMERGENCY OR SPILL, CONTACT					
	NAME Kin Slaughter		PHONE NO 575-887-4048		24-HOUR EMERGENCY NO.	
D I S P O S I T A L Y	15. GENERATOR'S CERTIFICATION: I Hereby declare that the contents of this consignment are fully and accurately described above by proper shipping name and are classified, packed, marked, and labeled, and are in all respects in proper condition for transport by highway according to applicable international and national government regulations, including applicable state regulations, and are the same materials previously approved by LEA LAND, LLC					
	PRINTED/TYPED NAME		SIGNATURE		DATE	
D I S P O S I T A L Y	16. TRANSPORTER (1)		17. TRANSPORTER (2)			
	NAME: WLBROS CONST. TEXAS I.D. NO. IN CASE OF EMERGENCY CONTACT: ALBERT MADRID EMERGENCY PHONE: (575) 708-0566		NAME: TEXAS I.D. NO. IN CASE OF EMERGENCY CONTACT: EMERGENCY PHONE:			
D I S P O S I T A L Y	18. TRANSPORTER (1): Acknowledgment of receipt of material		19. TRANSPORTER (2): Acknowledgment of receipt of material			
	PRINTED/TYPED NAME C. Bryant SIGNATURE C. Bryant DATE 11/24/2014		PRINTED/TYPED NAME SIGNATURE DATE			
D I S P O S I T A L Y	Lea Land, LLC		ADDRESS: Mile Marker 64, U.S. Hwy 62/180, 30 Miles East of Carlsbad, NM		PHONE: 575-887-4048	
	PERMIT NO. WM-01-035 - New Mexico		20. COMMENTS			
D I S P O S I T A L Y	21. DISPOSAL FACILITY'S CERTIFICATION: I Hereby certify that the above described wastes were delivered to this facility, that the facility is authorized and permitted to receive such wastes.					
	AUTHORIZED SIGNATURE Donna J. Wind		CELL NO. _____		DATE 11/24/2014 TIME 10:55	

LEA LAND DISPOSAL SITE NEW MEXICO

MILE MARKER #64 US HWY 62 180 • 30 MILES EAST OF CARLSBAD, NM • PHONE (575) 887-4048

LEA LAND, LLC

1300 WEST MAIN STREET • OKLAHOMA CITY, OK 73106 • PHONE (405) 236-4257

J Bar C

NON-HAZARDOUS WASTE MANIFEST

NO 105105

1. PAGE ___ OF ___

2. TRAILER NO. #02

G

3. COMPANY NAME

ENTERPRISE OPER. PROD. LLC
PHONE NO.

4. ADDRESS

2162 Commerce
CITY STATE ZIP

5. PICK-UP DATE

11/24/2014

6. TNRCC I.D. NO.

E

(713) 381-8500

Midland TX 79703

7. NAME OR DESCRIPTION OF WASTE SHIPPED:

8. CONTAINERS
No. Type

9. TOTAL
QUANTITY

10. UNIT
Wt/Vol.

11. TEXAS
WASTE ID #

N

a. Non-Regulated, Non Hazardous Waste

1

CM

E

c.

R

d. WT:

43.120

12. COMMENTS OR SPECIAL INSTRUCTIONS:

13. WASTE PROFILE NO.

A

PIPELINE PO # 14521489

503419

T

14. IN CASE OF EMERGENCY OR SPILL, CONTACT

NAME

PHONE NO

24-HOUR EMERGENCY NO.

Kin Slaughter

575-887-4048

O

15. GENERATOR'S CERTIFICATION: I Hereby declare that the contents of this consignment are fully and accurately described above by proper shipping name and are classified, packed, marked, and labeled, and are in all respects in proper condition for transport by highway according to applicable international and national government regulations, including applicable state regulations, and are the same materials previously approved by LEA LAND, LLC

R

PRINTED/TYPED NAME

SIGNATURE

DATE

T

R

A

N

S

P

O

R

T

E

R

S

16. TRANSPORTER (1)

NAME:

WLBROS CONST.

TEXAS I.D. NO.

IN CASE OF EMERGENCY CONTACT:

ALBERT MADRID

EMERGENCY PHONE:

(575) 706-0566

18. TRANSPORTER (1): Acknowledgment of receipt of material

PRINTED/TYPED NAME

X LUSTY Young

SIGNATURE

X LUSTY Young

DATE

11/24/2014

17.

TRANSPORTER (2)

NAME:

TEXAS I.D. NO.

IN CASE OF EMERGENCY CONTACT:

EMERGENCY PHONE:

19. TRANSPORTER (2): Acknowledgment of receipt of material

PRINTED/TYPED NAME

SIGNATURE

DATE

D
F
I
S
P
O
S
I
T
A
L
Y

Lea Land, LLC

ADDRESS:

Mile Marker 64, U.S. Hwy 62/180,
30 Miles East of Carlsbad, NM

PHONE:

575-887-4048

PERMIT NO.

WM-01-035 - New Mexico

20. COMMENTS

21. DISPOSAL FACILITY'S CERTIFICATION: I Hereby certify that the above described wastes were delivered to this facility, that the facility is authorized and permitted to receive such wastes.

AUTHORIZED SIGNATURE

Donna Swino

CELL NO.

—

DATE

11/24/2014

TIME

3:40

LEA LAND DISPOSAL SITE NEW MEXICO

MILE MARKER #64 US HWY 62/180 • 30 MILES EAST OF CARLSBAD, NM • PHONE (575) 887-4048

LEA LAND, LLC

1300 WEST MAIN STREET • OKLAHOMA CITY, OK 73106 • PHONE (405) 236-4257

J Bar C

NON-HAZARDOUS WASTE MANIFEST

NO 105106

1. PAGE ___ OF ___

2. TRAILER NO.

#06

G
E
N
E
R
A
T
O
R

3. COMPANY NAME

ENTERPRISE OPER. PROD. LLC
PHONE NO.

(713) 384-8500

4. ADDRESS

2182 Commerce

CITY

STATE

ZIP

Midland

TX

79703

5. PICK-UP DATE

11/24/2014

6. TNRCC I.D. NO.

7. NAME OR DESCRIPTION OF WASTE SHIPPED:

a. Non-Regulated, Non-Hazardous Waste
b.

c.

d. WT: 42240.

8. CONTAINERS

No.

Type

1

CM

9. TOTAL QUANTITY

10. UNIT Wt/Vol.

11. TEXAS WASTE ID

12. COMMENTS OR SPECIAL INSTRUCTIONS:

PIPELINE PO # 14521489

13. WASTE PROFILE NO.

503419

14.

IN CASE OF EMERGENCY OR SPILL, CONTACT

NAME

PHONE NO

24-HOUR EMERGENCY NO.

Kin Slaughter

575-887-4048

15. GENERATOR'S CERTIFICATION: I Hereby declare that the contents of this consignment are fully and accurately described above by proper shipping name and are classified, packed, marked, and labeled, and are in all respects in proper condition for transport by highway according to applicable international and national government regulations, including applicable state regulations, and are the same materials previously approved by LEA LAND, LLC

PRINTED/TYPED NAME

SIGNATURE

DATE

T
R
A
N
S
P
O
R
T
E
R
S

16. TRANSPORTER (1)

NAME:

WLBROS CONST.

TEXAS I.D. NO.

IN CASE OF EMERGENCY CONTACT:

ALBERT MADRID

EMERGENCY PHONE:

(575) 706-0566

17. TRANSPORTER (2)

NAME:

TEXAS I.D. NO.

IN CASE OF EMERGENCY CONTACT:

EMERGENCY PHONE:

18. TRANSPORTER (1): Acknowledgment of receipt of material

PRINTED/TYPED NAME

SIGNATURE

DATE

11/24/2014

19. TRANSPORTER (2): Acknowledgment of receipt of material

PRINTED/TYPED NAME

SIGNATURE

DATE

D
I
S
P
O
S
I
T
A
T
I
O
N

Lea Land, LLC

ADDRESS:

Mile Marker 64, U.S. Hwy 62/180,
30 Miles East of Carlsbad, NM

PHONE:

575-887-4048

PERMIT NO.

WM-01-035 - New Mexico

20. COMMENTS

21. DISPOSAL FACILITY'S CERTIFICATION: I Hereby certify that the above described wastes were delivered to this facility, that the facility is authorized and permitted to receive such wastes.

AUTHORIZED SIGNATURE

Donna Trevino

CELL NO.

DATE

11/24/2014

TIME

3:40

LEA LAND DISPOSAL SITE NEW MEXICO

MILE MARKER #64 US HWY 62/180 • 30 MILES EAST OF CARLSBAD, NM • PHONE (575) 887-4048

LEA LAND, LLC

1300 WEST MAIN STREET • OKLAHOMA CITY, OK 73106 • PHONE (405) 236-4257

J Barc
02

NON-HAZARDOUS WASTE MANIFEST

NO 104909

1. PAGE ___ OF ___

2. TRAILER NO.

02

G E N E R A T O R	3. COMPANY NAME ENTERPRISE OPER. PROD. LLC PHONE NO. (713) 381-8500	4. ADDRESS 2162 Commerce CITY STATE ZIP Midland TX 79703	5. PICK-UP DATE 11/20/2014	6. TNRCC I.D. NO.	
	7. NAME OR DESCRIPTION OF WASTE SHIPPED:		8. CONTAINERS No. Type	9. TOTAL QUANTITY	10. UNIT Wt/Vol.
	a. Non-Regulated, Non Hazardous Waste		1	CM	
	b.				
T R A N S P O R T E R S	c.				
	d. WT: 47,680 42,720				
	12. COMMENTS OR SPECIAL INSTRUCTIONS: PIPELINE PO # 14521489		13. WASTE PROFILE NO.		
	T-90,400				
D I S C O L S I A T O R	14. IN CASE OF EMERGENCY OR SPILL, CONTACT				
	NAME Kin Slaughter		PHONE NO. 575-887-4048		24-HOUR EMERGENCY NO.
	15. GENERATOR'S CERTIFICATION: I Hereby declare that the contents of this consignment are fully and accurately described above by proper shipping name and are classified, packed, marked, and labeled, and are in all respects in proper condition for transport by highway according to applicable international and national government regulations, including applicable state regulations, and are the same materials previously approved by LEA LAND, LLC				
	PRINTED/TYPED NAME		SIGNATURE		DATE
T R A N S P O R T E R S	16. TRANSPORTER (1) NAME: WLBROS CONST. TEXAS I.D. NO. IN CASE OF EMERGENCY CONTACT: ALBERT MADRID EMERGENCY PHONE: (575) 708-0588		17. TRANSPORTER (2) NAME: TEXAS I.D. NO. IN CASE OF EMERGENCY CONTACT: EMERGENCY PHONE:		
	18. TRANSPORTER (1): Acknowledgment of receipt of material PRINTED/TYPED NAME X Rusty SIGNATURE X Rusty DATE 11/20/2014		19. TRANSPORTER (2): Acknowledgment of receipt of material PRINTED/TYPED NAME SIGNATURE DATE		
	20. COMMENTS				
	21. DISPOSAL FACILITY'S CERTIFICATION: I Hereby certify that the above described wastes were delivered to this facility, that the facility is authorized and permitted to receive such wastes.				
D I S C O L S I A T O R	Lea Land, LLC		ADDRESS: Mile Marker 64, U.S. Hwy 62/180, 30 Miles East of Carlsbad, NM		PHONE: 575-887-4048
	PERMIT NO. WM-01-035 - New Mexico				
	AUTHORIZED SIGNATURE Donna Shino		CELL NO.		DATE 11/20/2014
					TIME 12:00

GENERATOR: COPIES 1 & 6

DISPOSAL SITE: COPIES 2 & 3

TRANSPORTERS: COPIES 4 & 5

LEA LAND DISPOSAL SITE NEW MEXICO

MILE MARKER #64 US HWY 62/180 • 30 MILES EAST OF CARLSBAD, NM • PHONE (575) 887-4048

LEA LAND, LLC

1300 WEST MAIN STREET • OKLAHOMA CITY, OK 73106 • PHONE (405) 236-4257

J Bar C

NON-HAZARDOUS WASTE MANIFEST

NO 104937

1. PAGE ___ OF ___

2. TRAILER NO. #03

G

3. COMPANY NAME

ENTERPRISE OPER. PROD. LLC
PHONE NO.

4. ADDRESS

2162 Commerce
CITY STATE ZIP
Midland TX 79703

5. PICK-UP DATE

11/20/2014

6. TNRCC I.D. NO.

E

(713) 381-6500

N

7. NAME OR DESCRIPTION OF WASTE SHIPPED:

a. Non-Regulated, Non Hazardous Waste
b.

E

c.

R

d. WT: 48,940

A

12. COMMENTS OR SPECIAL INSTRUCTIONS:

PIPELINE PO # 14521489

13. WASTE PROFILE NO.

503419

T

14.

IN CASE OF EMERGENCY OR SPILL, CONTACT

NAME

PHONE NO

24-HOUR EMERGENCY NO.

Kin Slaughter

575-887-4048

O

15. **GENERATOR'S CERTIFICATION:** I Hereby declare that the contents of this consignment are fully and accurately described above by proper shipping name and are classified, packed, marked, and labeled, and are in all respects in proper condition for transport by highway according to applicable international and national government regulations, including applicable state regulations, and are the same materials previously approved by LEA LAND, LLC

R

PRINTED/TYPED NAME

SIGNATURE

DATE

T

16.

TRANSPORTER (1)

NAME:

WILBROS CONST.

TEXAS I.D. NO.

IN CASE OF EMERGENCY CONTACT:

ALBERT MADRID

EMERGENCY PHONE:

(575) 706-0566

R

18. TRANSPORTER (1): Acknowledgment of receipt of material

PRINTED/TYPED NAME

SIGNATURE

DATE

11/20/2014

D

PERMIT NO.

WM-01-035 - New Mexico

ADDRESS:

Mile Marker 64, U.S. Hwy 62/180,
30 Miles East of Carlsbad, NM

PHONE:

575-887-4048

F

I

S

C

P

I

O

L

S

I

A

T

L

Y

21. **DISPOSAL FACILITY'S CERTIFICATION:** I Hereby certify that the above described wastes were delivered to this facility, that the facility is authorized and permitted to receive such wastes.

AUTHORIZED SIGNATURE

Donna Irwin

CELL NO.

DATE

11/20/2014

TIME

4:20

GENERATOR: COPIES 1 & 6

DISPOSAL SITE: COPIES 2 & 3

TRANSPORTERS: COPIES 4 & 5

LEA LAND DISPOSAL SITE NEW MEXICO

MILE MARKER #64 US HWY 62/180 • 30 MILES EAST OF CARLSBAD, NM • PHONE (575) 887-4048

LEA LAND, LLC

1300 WEST MAIN STREET • OKLAHOMA CITY, OK 73106 • PHONE (405) 236-4257

Scooters

NON-HAZARDOUS WASTE MANIFEST

NO **104938**

1. PAGE OF

2. TRAILER NO. **01**

G E	3. COMPANY NAME ENTERPRISE OPER. PROD. LLC	4. ADDRESS 2162 Commerce	5. PICK-UP DATE 11/20/2014
	PHONE NO. (713) 381-6500	CITY STATE ZIP Midland TX 79703	6. TNRCC I.D. NO.

N E R	7. NAME OR DESCRIPTION OF WASTE SHIPPED:	8. CONTAINERS No. Type	9. TOTAL QUANTITY	10. UNIT Wt/Vol.	11. TEXAS WASTE ID #
	a. Non-Regulated, Non Hazardous Waste	1 CM			
	b.				
	c.				

A	12. COMMENTS OR SPECIAL INSTRUCTIONS: PIPELINE PO # 14521489	13. WASTE PROFILE NO. 503419
----------	--	--

T	14. IN CASE OF EMERGENCY OR SPILL, CONTACT	
	NAME Kin Slaughter	PHONE NO. 24-HOUR EMERGENCY NO. 575-887-4048

15. **GENERATOR'S CERTIFICATION:** I hereby declare that the contents of this consignment are fully and accurately described above by proper shipping name and are classified, packed, marked, and labeled, and are in all respects in proper condition for transport by highway according to applicable international and national government regulations, including applicable state regulations, and are the same materials previously approved by LEA LAND, LLC

R	PRINTED/TYPED NAME	SIGNATURE	DATE
----------	--------------------	-----------	------

T R A N S P O R T E R S	16. TRANSPORTER (1)		17. TRANSPORTER (2)	
	NAME: WLBROS CONST.		NAME:	
	TEXAS I.D. NO.		TEXAS I.D. NO.	
	IN CASE OF EMERGENCY CONTACT: ALBERT MADRID		IN CASE OF EMERGENCY CONTACT:	
EMERGENCY PHONE: (575) 706-0566		EMERGENCY PHONE:		
18. TRANSPORTER (1): Acknowledgment of receipt of material		19. TRANSPORTER (2): Acknowledgment of receipt of material		
PRINTED/TYPED NAME <i>Sally Bryant</i>		PRINTED/TYPED NAME		
SIGNATURE <i>Sally Bryant</i> DATE 11/20/2014		SIGNATURE DATE		

D F I S C P I L S I A T O R L E R	Lea Land, LLC	ADDRESS: Mile Marker 64, U.S. Hwy 62/180, 30 Miles East of Carlsbad, NM	PHONE: 575-887-4048
--	---------------	--	----------------------------

PERMIT NO. WM-01-035 - New Mexico	20. COMMENTS
--	--------------

21. **DISPOSAL FACILITY'S CERTIFICATION:** I hereby certify that the above described wastes were delivered to this facility, that the facility is authorized and permitted to receive such wastes.

AUTHORIZED SIGNATURE <i>Donna Jewino</i>	CELL NO.	DATE 11/20/2014	TIME 4:25
--	----------	------------------------	------------------