

## Bratcher, Mike, EMNRD

---

**From:** Christine Alderman <calderman@cimarex.com>  
**Sent:** Tuesday, October 3, 2017 11:51 AM  
**To:** Weaver, Crystal, EMNRD; Tucker, Shelly  
**Cc:** Bratcher, Mike, EMNRD  
**Subject:** RE: [External] Re: FW: Marquardt Fed 12 (API 30-015-41850)  
**Attachments:** 00659 Cimarex Marquardt 12H Deferment Report.pdf

Crystal/Shelly,

Please find attached the work plan for the above mentioned location.

I will provide a complete update on all projects tomorrow when I am in the office.

Please let me know if you have any questions.

Respectfully,

Christine Alderman

Cimarex Energy Co.



ESH Supervisor – Permian Basin  
Midland TX  
Cell – 432.853.7059

---

**From:** Weaver, Crystal, EMNRD [mailto:Crystal.Weaver@state.nm.us]  
**Sent:** Tuesday, October 03, 2017 12:30 PM  
**To:** Tucker, Shelly <stucker@blm.gov>; Christine Alderman <calderman@cimarex.com>  
**Cc:** Bratcher, Mike, EMNRD <mike.bratcher@state.nm.us>  
**Subject:** RE: [External] Re: FW: Marquardt Fed 12 (API 30-015-41850)

Cimarex \* Marquardt Federal 12H \* 30-015-41850 \* 2RP-4030 \* DOR 10/12/16

Christine,

OCD concurs with BLM's request for an update on this dated release. Back in December 2016 we also had to request that you all send us the initial C-141 cause that was never sent to us. Please be prompt with your response in updating us on the status of this release or this case along with quite a few others will be referred to our Santa Fe Compliance team for further pursuit of action.

Thank you,

**Crystal Weaver**  
Environmental Specialist

OCD – Artesia District II  
811 S. 1<sup>st</sup> Street  
Artesia, NM 88210  
Office: 575-748-1283 ext. 101  
Cell: 575-840-5963  
Fax: 575-748-9720

**From:** Tucker, Shelly [<mailto:stucker@blm.gov>]  
**Sent:** Thursday, September 28, 2017 11:47 AM  
**To:** Christine Alderman <[calderman@cimarex.com](mailto:calderman@cimarex.com)>  
**Cc:** Weaver, Crystal, EMNRD <[Crystal.Weaver@state.nm.us](mailto:Crystal.Weaver@state.nm.us)>; Bratcher, Mike, EMNRD <[mike.bratcher@state.nm.us](mailto:mike.bratcher@state.nm.us)>  
**Subject:** Re: [External] Re: FW: Marquardt Fed 12 (API 30-015-41850)

Christine,

BLM is requesting an update on this release dated 10.12.2016.

If you have any questions or concerns, please do not hesitate to contact me.

Sincerely,

*Shelly J Tucker*  
Environmental Protection Specialist  
O&G Spill/Release Coordinator

Bureau of Land Management  
620 E. Greene St  
Carlsbad, NM 88220

575.234.5905 - Direct  
575.361.0084 - Cellular  
575.234.6235 - Emergency Spill Number

[stucker@blm.gov](mailto:stucker@blm.gov)

The **BLM acceptance/approval does not** relieve the operator of liability should their operations have failed to adequately investigate and remediate contamination that may pose a threat to groundwater, surface water, human health or the environment or if the location fails to reclaim properly. In such an event that the location does not revegetate, or future issues with contaminants are encountered, the operator will be asked to address the issues until the contaminant issues are fully mitigated and the location is successfully reclaimed. In addition, BLM approval does not relieve the operator of responsibility for compliance with any other federal, state or local laws/regulations.

**Confidentiality Warning:** This message along with any attachments are intended only for use of the individual or entity to which it is addressed and may contain information that is privileged or confidential and exempt from disclosure under applicable law. If the reader of this message is not the intended recipient or the employee or agent responsible for delivering this message to the intended recipient, you are hereby notified that any dissemination, distribution, or copying of this communication is strictly prohibited. If you have received this communication in error, please notify the sender immediately.

On Thu, Oct 13, 2016 at 9:20 AM, Christine Alderman <[calderman@cimarex.com](mailto:calderman@cimarex.com)> wrote:

Here is the C-141.

Christine Alderman

Cimarex Energy Co.



ESH Supervisor – Permian Basin

Midland TX

Cell – 432.853.7059

---

**From:** Christine Alderman  
**Sent:** Thursday, October 13, 2016 10:03 AM  
**To:** 'Tucker, Shelly' <[stucker@blm.gov](mailto:stucker@blm.gov)>  
**Subject:** RE: [External] Re: FW: Marquardt Fed 12 (API 30-015-41850)

Thank you!

Christine Alderman

Cimarex Energy Co.



ESH Supervisor – Permian Basin

Midland TX

Cell – 432.853.7059

**From:** Tucker, Shelly [<mailto:stucker@blm.gov>]  
**Sent:** Thursday, October 13, 2016 9:57 AM

**To:** Christine Alderman <[calderman@cimarex.com](mailto:calderman@cimarex.com)>

**Subject:** [External] Re: FW: Marquardt Fed 12 (API 30-015-41850)

Christine,

I do not have an issue with your initial plan to address this impact. Thanks!

If you have any questions or concerns, please do not hesitate to contact me.

Sincerely,

*Shelly J Tucker*

Environmental Protection Specialist

O&G Spill/Release Coordinator

Bureau of Land Management

620 E. Greene St

Carlsbad, NM 88220

575.234.5905 - Direct

575.361.0084 - Cellular

575.234.6235 - Emergency Spill Number

[stucker@blm.gov](mailto:stucker@blm.gov)

The **BLM acceptance/approval does not** relieve the operator of liability should their operations have failed to adequately investigate and remediate contamination that may pose a threat to groundwater, surface water, human health or the environment or if the location fails to reclaim properly. In such an event that the location does not revegetate, or future issues with contaminants are encountered, the operator will be asked to address the issues until the contaminant issues are fully mitigated and the location is successfully reclaimed. In addition, BLM approval does not relieve the operator of responsibility for compliance with any other federal, state or local laws/regulations.

**Confidentiality Warning:** This message along with any attachments are intended only for use of the individual or entity to which it is addressed and may contain information that is privileged or confidential and exempt from disclosure under applicable law. If the reader of this message is not the intended recipient or the employee or agent responsible for delivering this message to the intended recipient, you are hereby notified that any dissemination, distribution, or copying of this communication is strictly prohibited. If you have received this communication in error, please notify the sender immediately.

On Thu, Oct 13, 2016 at 8:47 AM, Amos, James <[jamos@blm.gov](mailto:jamos@blm.gov)> wrote:

----- Forwarded message -----

From: **Christine Alderman** <[calderman@cimarex.com](mailto:calderman@cimarex.com)>  
Date: Thu, Oct 13, 2016 at 8:27 AM  
Subject: FW: Marquardt Fed 12 (API 30-015-41850)  
To: "Amos, James A ([jamos@blm.gov](mailto:jamos@blm.gov))" <[jamos@blm.gov](mailto:jamos@blm.gov)>

---

I am sending this to you since Randy is out of the office for a few weeks.

Christine Alderman

Cimarex Energy Co.



ESH Supervisor – Permian Basin

Midland TX

Cell – 432.853.7059

---

**From:** Christine Alderman  
**Sent:** Wednesday, October 12, 2016 10:48 AM  
**To:** 'Pair, Randal' <[rpair@blm.gov](mailto:rpair@blm.gov)>; Patterson, Heather, EMNRD ([Heather.Patterson@state.nm.us](mailto:Heather.Patterson@state.nm.us))  
<[Heather.Patterson@state.nm.us](mailto:Heather.Patterson@state.nm.us)>  
**Subject:** Marquardt Fed 12 (API 30-015-41850)

Randy/Heather,

This morning we discovered a leak at the above named location. Approximately 40 bbls of produced water was released from a faulty 4" check valve. The valve has been replaced and we are in the process of recovering fluids.

The fluids followed the ROW and is approximately 1' wide for 500 yards, then pools up. We are planning to go in with a hydrovac and get the impacted soils up as quickly as possible before they go deeper. We will then go back and sample.

Please let me know if either of you have any issues with this. Thanks!

Please see yellow line on map below.

Christine Alderman

Cimarex Energy Co.



ESH Supervisor – Permian Basin

Midland TX

Cell – 432.853.7059

---

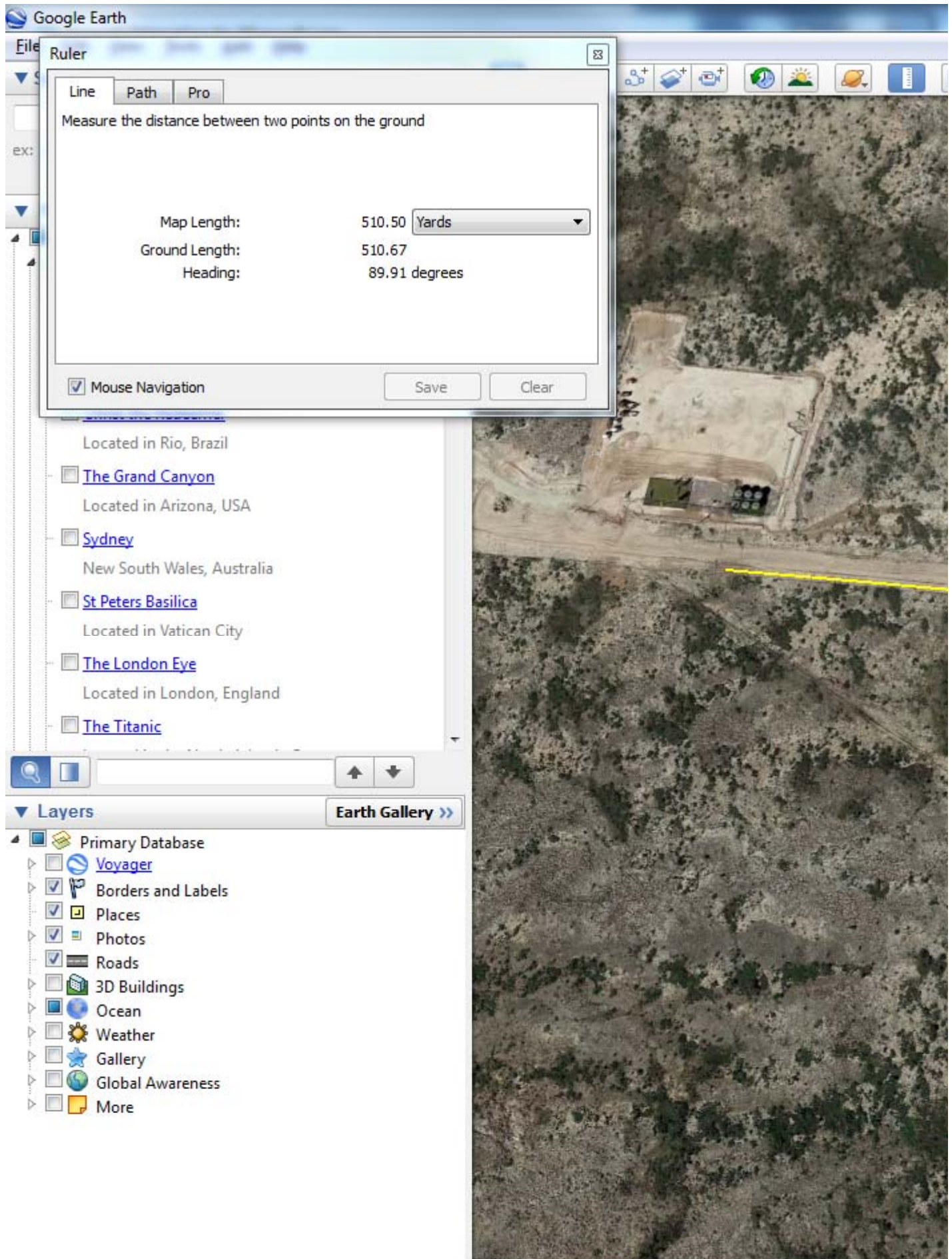
**From:** Brad Sparks

**Sent:** Wednesday, October 12, 2016 10:22 AM

**To:** Christine Alderman <[calderman@cimarex.com](mailto:calderman@cimarex.com)>; Kim Barton <[KBarton@cimarex.com](mailto:KBarton@cimarex.com)>

**Subject:** Affected Area

Yellow line approx. 500 ft. see picture. Thin affected strip.







**Brad Sparks**

**Production Foreman**

**Carlsbad District**

**Permian Basin Region**

**7101 Norris Road**

**Carlsbad, NM 88220**

**Office. 575.628.3447**

**Fax. 575.628.3566**

**Cell. 575.499.5093**

--

Confidentiality Warning: This message along with any attachments are intended only for use of the individual or entity to which it is addressed and may contain information that is privileged or confidential and exempt from disclosure under applicable law. If the reader of this message is not the intended recipient or the employee or agent responsible for delivering this message to the intended recipient, you are hereby notified that any dissemination, distribution, or copying of this communication is strictly prohibited. If you have received this communication in error, please notify the sender immediately.

James A. Amos  
Bureau of Land Management  
Carlsbad Field Office  
Supervisory Petroleum Engineering Tech  
620 East Greene Street  
Carlsbad, NM. 88220  
Office: (575) 234-5909  
Fax: (575) 234-5927  
Cell: (575) 361-2648  
E-mail: [jamos@blm.gov](mailto:jamos@blm.gov)