

Figure 1-2 USGS 7.5 Minute Topographic Map
BOPCO Proposed Central Recycling Containment Location

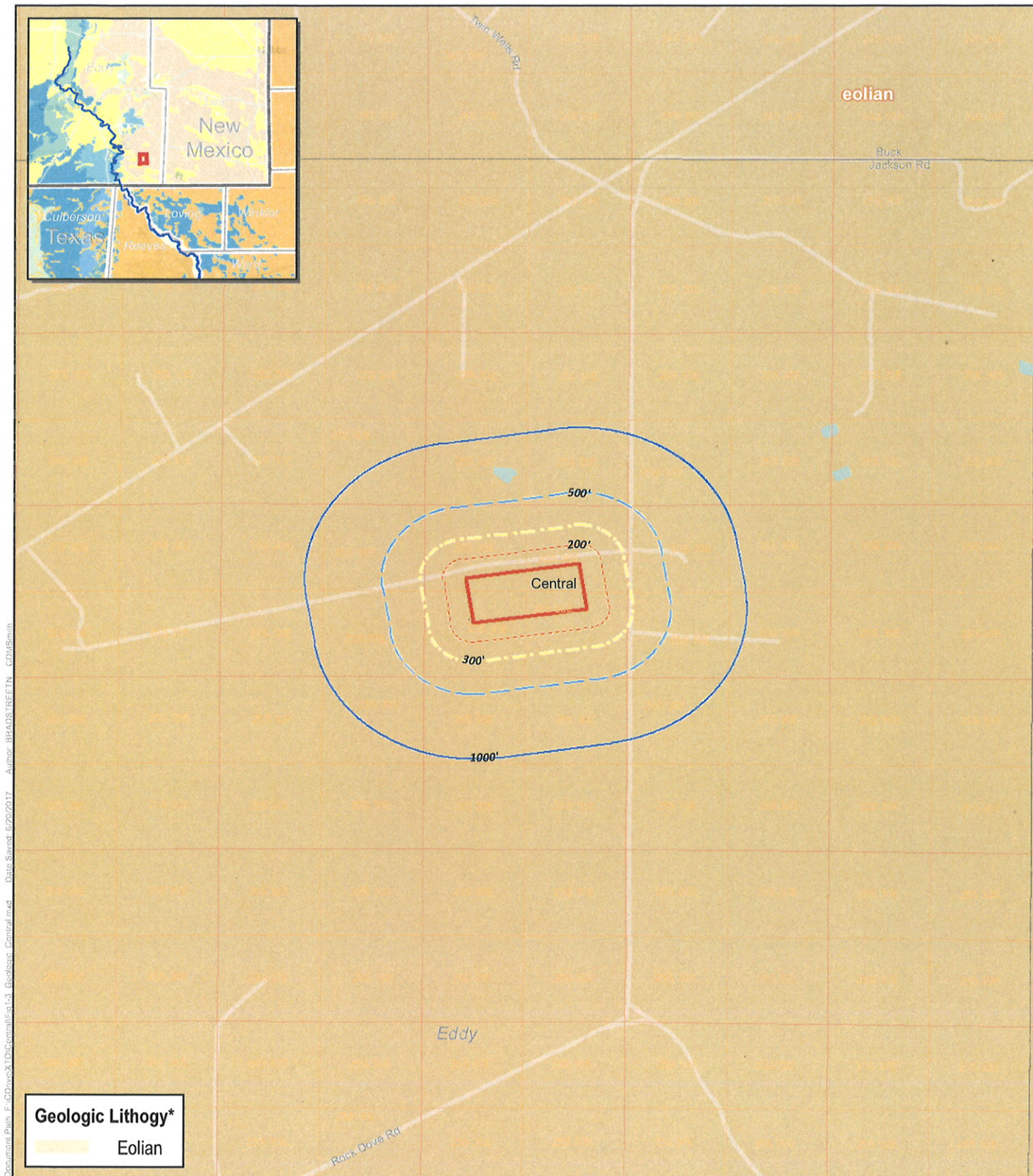


0 1,000 2,000 4,000
ft

Proposed Facility Boundary

--- 200'
--- 300'
--- 500'
--- 1,000'

**CDM
Smith**



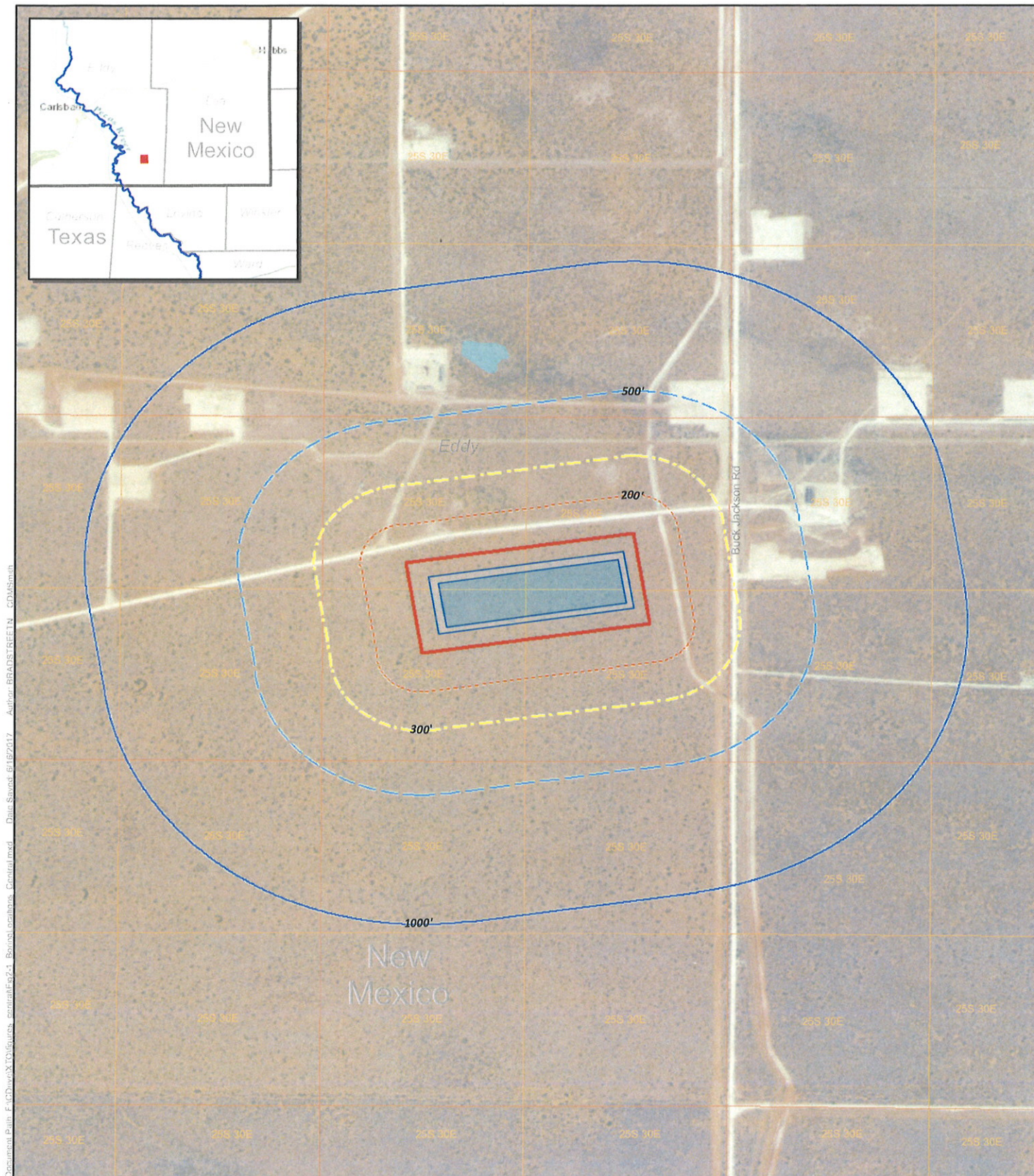


Figure 2-1 Boring Log Map
BOPCO Proposed Central Recycling Containment Location

- Pond
- Proposed Facility Boundary



- 200'
- 300'
- 500'
- 1,000'

**CDM
Smith**

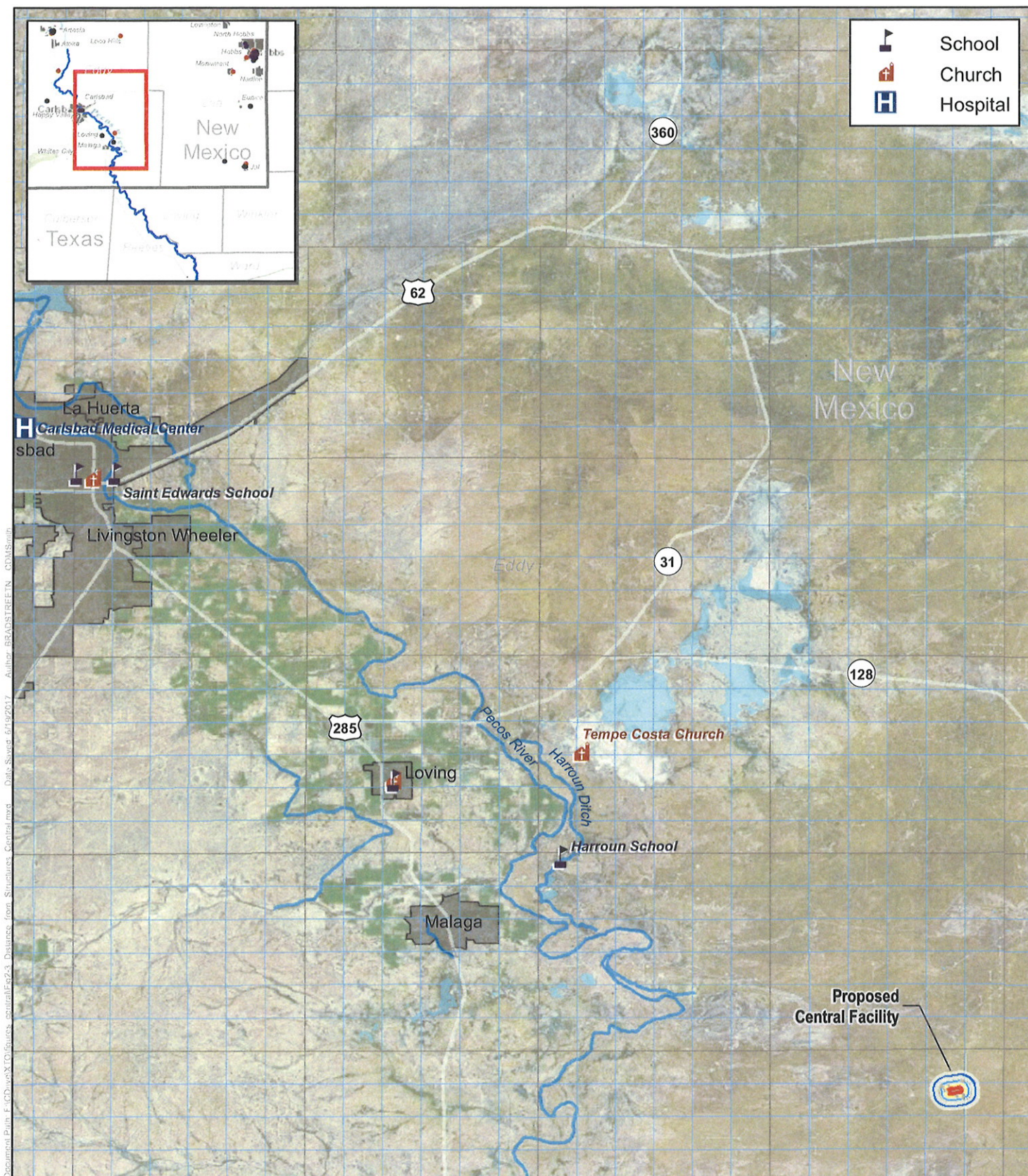
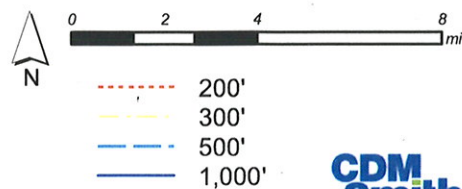


Figure 2-3 Distance from Structures Map
BOPCO Proposed Central Recycling Containment Location

Proposed Facility Boundary
 US Census Designated Place*

Source: *U.S. Census Bureau



**CDM
Smith**

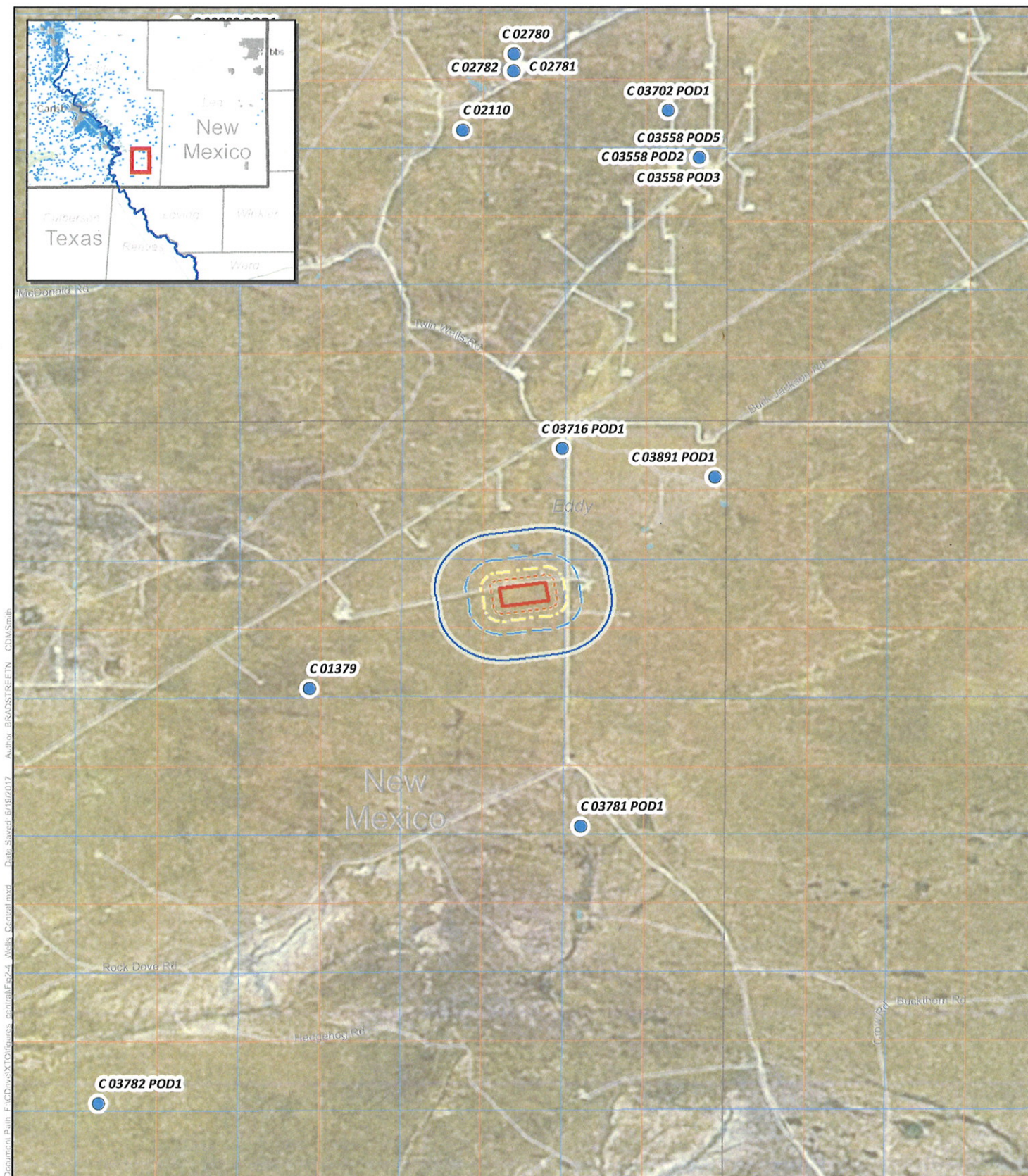
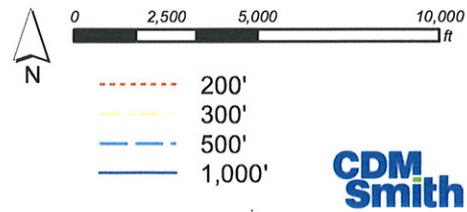


Figure 2-4 Distance from Wells Map
BOPCO Proposed Central Recycling Containment Location

- Well*
- Proposed Facility Boundary

Source: *New Mexico Office of the State Engineer



**CDM
Smith**

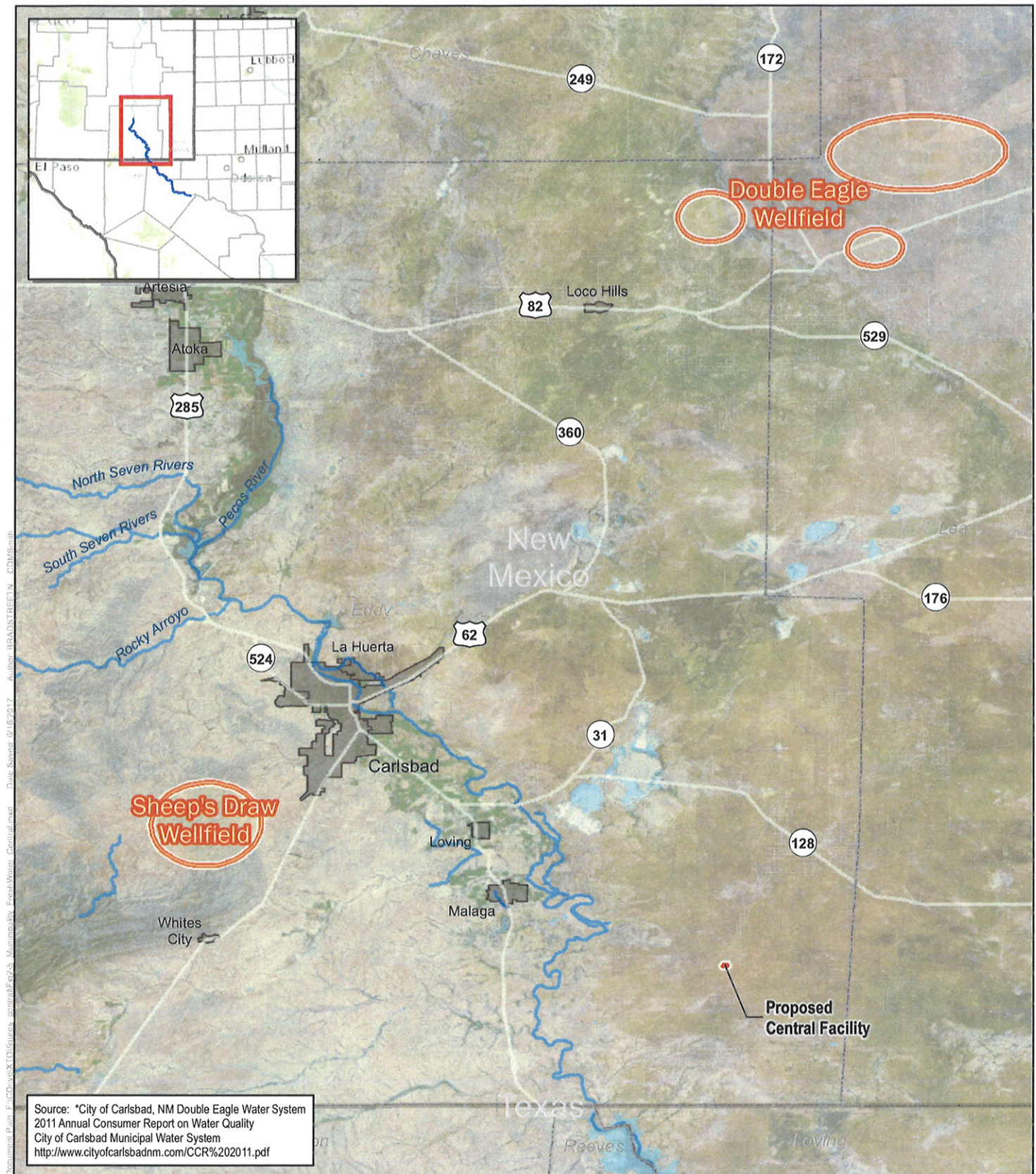


Figure 2-5 Distance from Municipalities and Freshwater Fields Map
BOPCO Proposed Central Recycling Containment Location



- Proposed Facility Boundary
- Freshwater Field*
- US Census Designated Place

**CDM
Smith**

