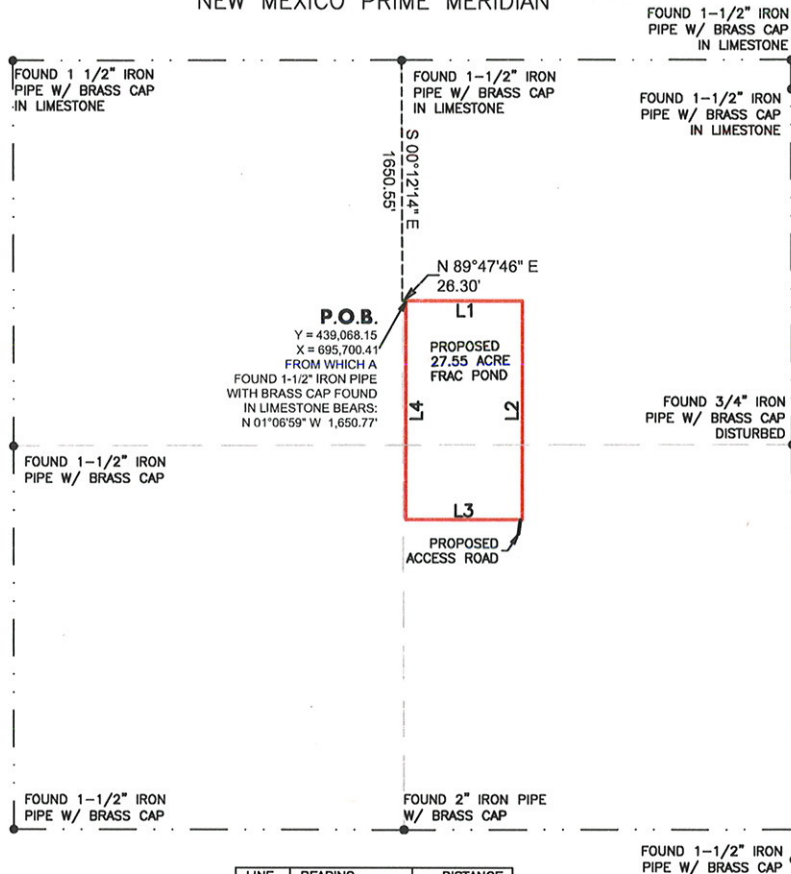




0 500' 1000'
1" = 1000 FEET

SECTION 24

TOWNSHIP 24 SOUTH, RANGE 30 EAST
NEW MEXICO PRIME MERIDIAN

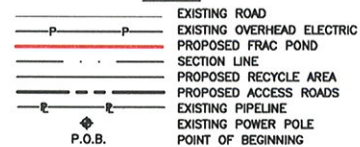


LINE	BEARING	DISTANCE
L1	S 89°59'55\" E	800.00'
L2	S 00°00'05\" W	1500.00'
L3	N 89°59'55\" W	800.00'
L4	N 00°00'05\" E	1500.00'

GENERAL NOTES

- COORDINATES SHOWN ARE BASED ON THE NEW MEXICO STATE PLANE COORDINATE SYSTEM OF NAD 83 (HPGN), NEW MEXICO, EAST ZONE.
- VERTICAL DATUM IS NAVD 88.
- LATITUDE AND LONGITUDE ARE WGS84 AS SHOWN.
- AREA AND COORDINATES ARE "GRID" AND DISTANCES ARE OF SURFACE VALUE.
- UNITS ARE UNITED STATES SURVEY FOOT.

LEGEND



LEGAL DESCRIPTION

A TRACT OF LAND LOCATED IN SECTION 24, TOWNSHIP 24 SOUTH, RANGE 30 EAST, N.M.P.M., EDDY COUNTY, NEW MEXICO AND BEING MORE PARTICULARLY DESCRIBED AS FOLLOWS:

BEGINNING AT A POINT WHICH LIES S 00°12'14\" E 1,650.55 FEET AND N 89°47'46\" E, 26.30 FEET FROM THE NORTHWEST QUARTER'S NORTHEAST CORNER OF SAID SECTION 24; THENCE S 89°59'55\" E, A DISTANCE OF 800.00 FEET; THENCE S 00°00'05\" W, A DISTANCE OF 1,500 FEET; THENCE N 89°59'55\" W, A DISTANCE OF 800.00 FEET; THENCE N 00°00'05\" E, A DISTANCE OF 1,500 FEET TO THE POINT OF BEGINNING. SAID TRACT OF LAND CONTAINING 27.55 ACRES, MORE OR LESS.

PROPOSED FRAC POND FOR: XTO ENERGY INC.

POKER LAKE UNIT CENTRAL 1 FRAC POND
SITUATED IN SECTION 24, TOWNSHIP 24 SOUTH,
RANGE 30 EAST, N.M.P.M., AND BEING LOCATED
APPROXIMATELY 17.4 MILES SOUTHEAST OF
LOVING, IN EDDY COUNTY, NEW MEXICO.

DATE: 6-20-2017
DRAWN BY: JAR
CHECKED BY: DH
FIELD CREW: RE
PROJECT NO: 2017050627
SCALE: 1\" = 1000'
SHEET: 1 OF 1
REVISION: NO



I HEREBY STATE THAT THIS PLAT
SHOWS THE SUBJECT SURFACE
LOCATION AS STAKED ON THE GROUND.

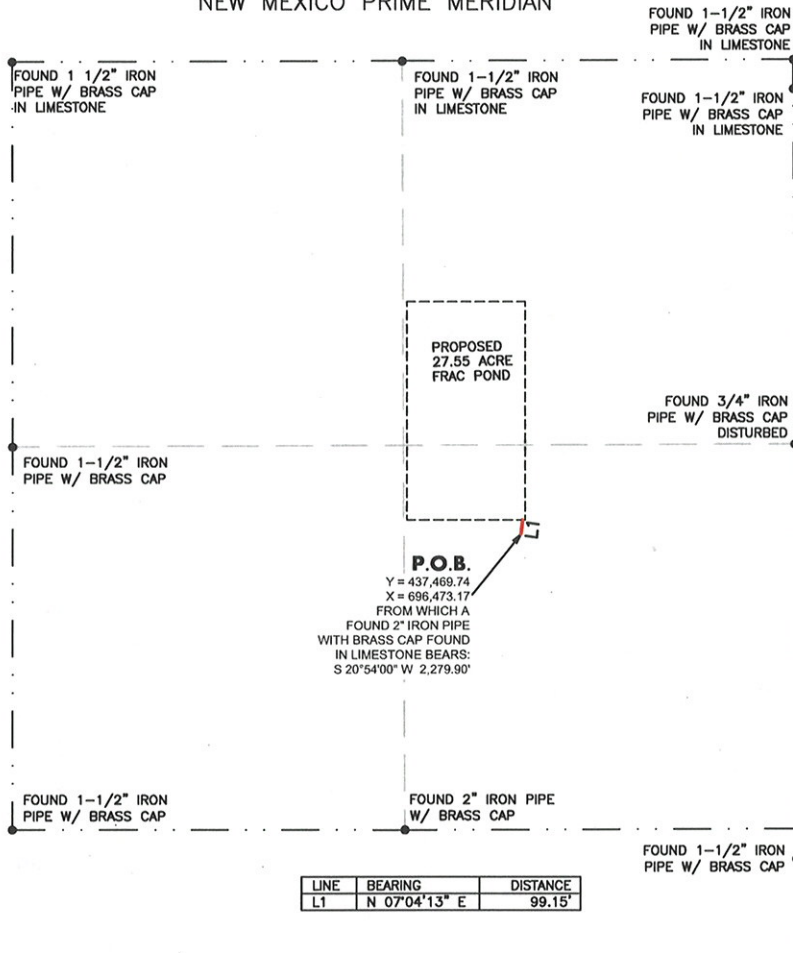
MARK DILLON HARP
REGISTERED PROFESSIONAL LAND SURVEYOR
STATE OF NEW MEXICO NO. 23786

FSC INC
SURVEYORS+ENGINEERS
550 Bailey Ave., 205 - Fort Worth, TX 76107
Ph: 817.349.9800 - Fax: 979.732.5271
TBPE Firm 17957 | TBPLS Firm 10193887
www.fscinc.net
© COPYRIGHT 2010 - ALL RIGHTS RESERVED



0 500' 1000'
1" = 1000 FEET

SECTION 24
TOWNSHIP 24 SOUTH, RANGE 30 EAST
NEW MEXICO PRIME MERIDIAN

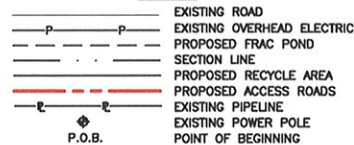


LINE	BEARING	DISTANCE
L1	N 07°04'13\"	99.15'

GENERAL NOTES

- COORDINATES SHOWN ARE BASED ON THE NEW MEXICO STATE PLANE COORDINATE SYSTEM OF NAD 83 (HPGN), NEW MEXICO, EAST ZONE.
- VERTICAL DATUM IS NAVD 88.
- LATITUDE AND LONGITUDE ARE WGS84 AS SHOWN.
- AREA AND COORDINATES ARE "GRID" AND DISTANCES ARE OF SURFACE VALUE.
- UNITS ARE UNITED STATES SURVEY FOOT.

LEGEND



LEGAL DESCRIPTION

A STRIP OF LAND 20 FEET WIDE, LOCATED IN SECTION 24, TOWNSHIP 24 SOUTH, RANGE 30 EAST, N.M.P.M., EDDY COUNTY, NEW MEXICO AND BEING 10 FEET LEFT AND 10 FEET RIGHT OF THE ABOVE PLATTED CENTERLINE SURVEY.

99.15 FEET = 0.02 MILES = 6.01 RODS = 0.05 ACRES



I HEREBY STATE THAT THIS PLAT SHOWS THE SUBJECT SURFACE LOCATION AS STAKED ON THE GROUND.

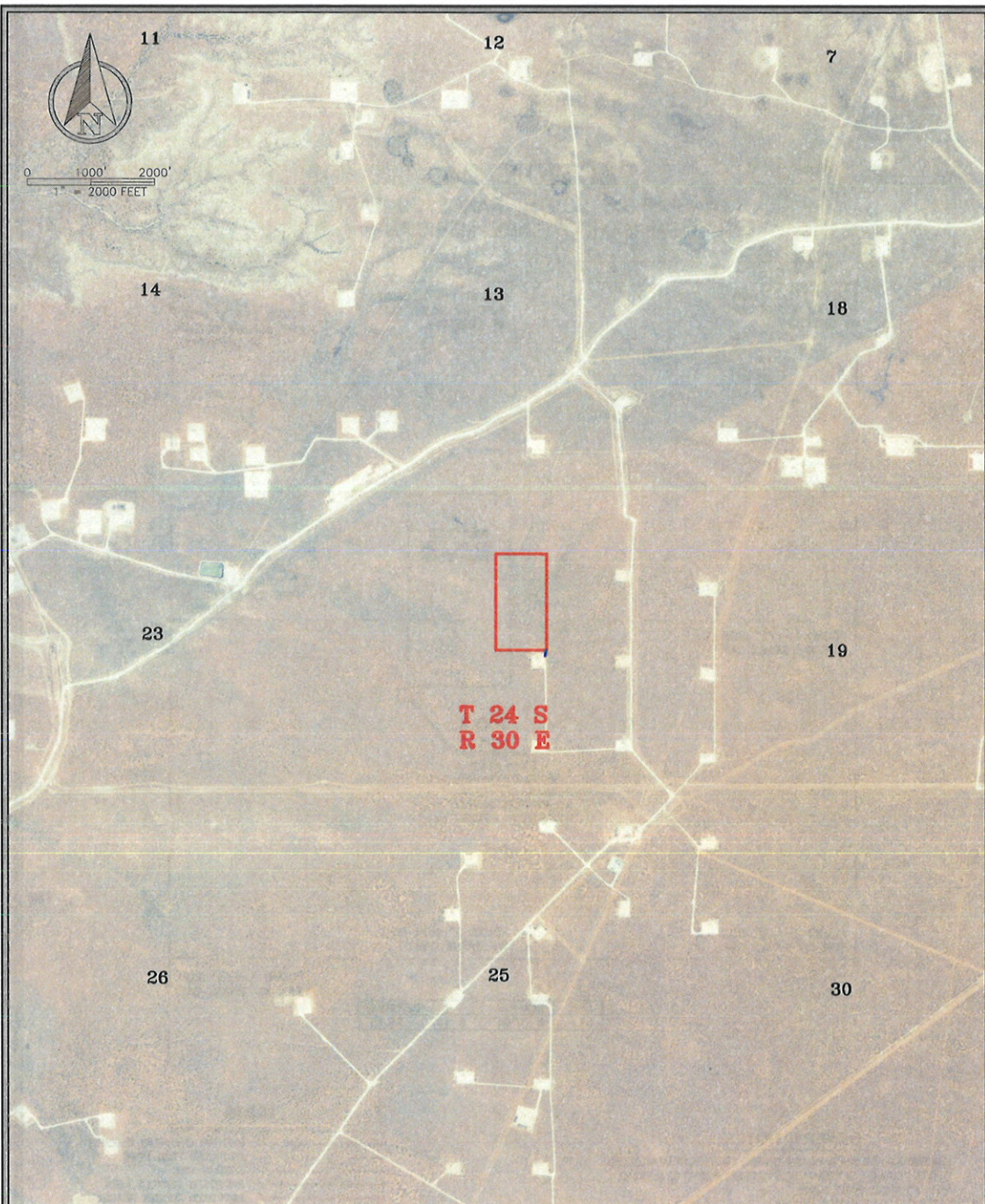
MARK DILLON HARP
REGISTERED PROFESSIONAL LAND SURVEYOR
STATE OF NEW MEXICO NO. 23786

FSC INC
SURVEYORS+ENGINEERS
550 Bailey Ave., 205 - Fort Worth, TX 76107
Ph: 817.349.9800 - Fax: 979.732.5271
TBPE Firm 17957 | TBPLS Firm 10193887
www.fscinc.net

© COPYRIGHT 2016 - ALL RIGHTS RESERVED

PROPOSED ACCESS ROAD FOR:
XTO ENERGY INC.
POKER LAKE UNIT CENTRAL 1 FRAC POND
SITUATED IN SECTION 24, TOWNSHIP 24 SOUTH,
RANGE 30 EAST, N.M.P.M., AND BEING LOCATED
APPROXIMATELY 17.4 MILES SOUTHEAST OF
LOVING, IN EDDY COUNTY, NEW MEXICO.

DATE: 6-20-2017
DRAWN BY: JAR
CHECKED BY: DH
FIELD CREW: RE
PROJECT NO: 2017050627
SCALE: 1" = 1000'
SHEET: 1 OF 1
REVISION: NO



LEGEND

- PROPOSED FRAC POND
- PROPOSED RECYCLE AREA
- PROPOSED ACCESS ROADS

PROPOSED FRAC POND AND ACCESS ROADS FOR:

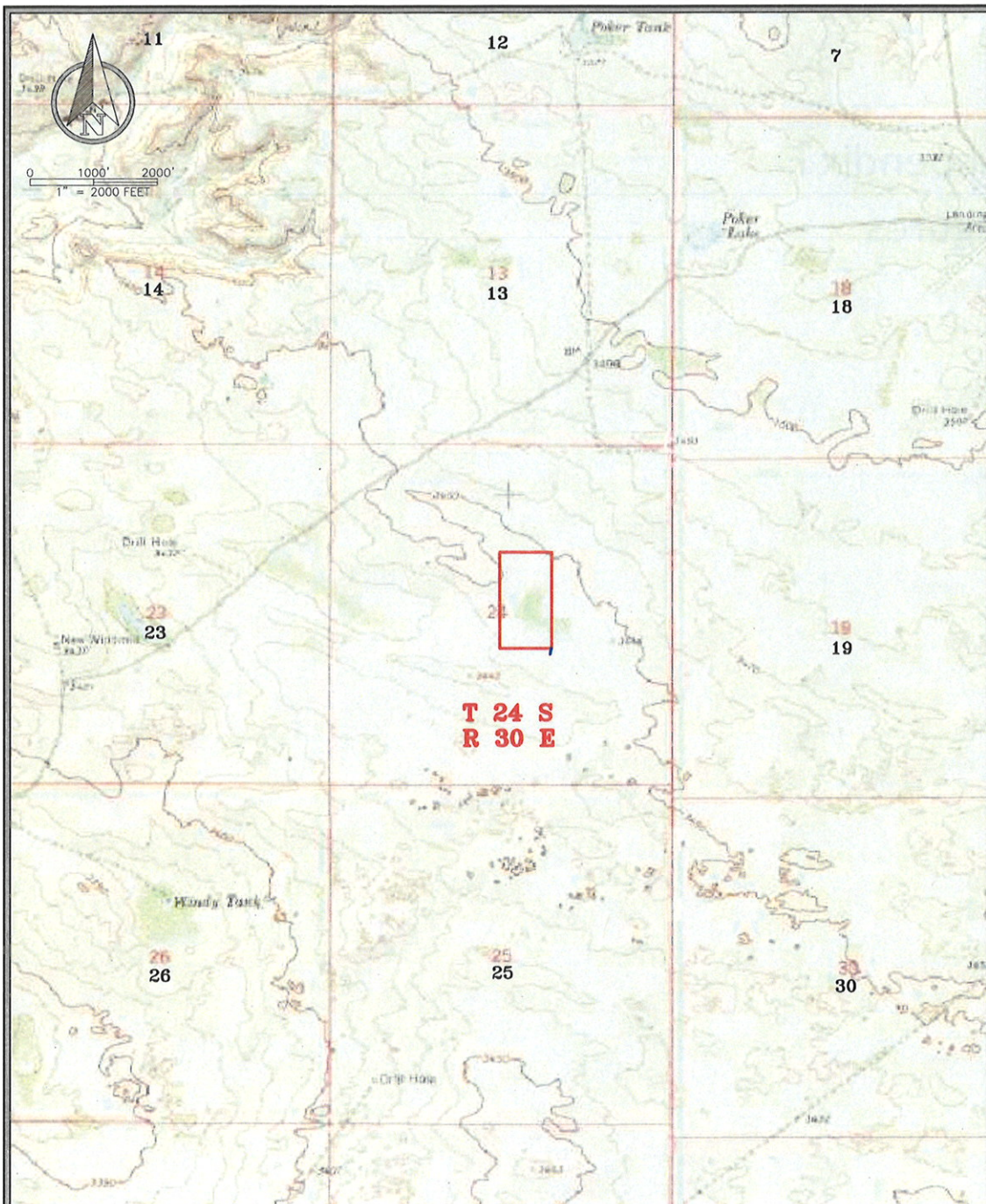
XTO ENERGY INC.

SECTION 24, TOWNSHIP 24 SOUTH, RANGE 30 EAST,
N.M.P.M., EDDY COUNTY, NEW MEXICO.

FSC INC
SURVEYORS+ENGINEERS
550 Bailey Ave., 205 - Fort Worth, TX 76107
Ph: 817.349.9800 - Fax: 979.732.5271
TBPE Firm 17957 | TBPLS Firm 10193887
www.fscinc.net

DATE: 6-20-2017
DRAWN BY: AI
CHECKED BY: DH
FIELD CREW: RE
PROJECT NO: 2017050627
SCALE: 1" = 2000'
SHEET: 1 OF 1
REVISION: NO

© COPYRIGHT 2016 - ALL RIGHTS RESERVED



LEGEND

- PROPOSED FRAC POND
- PROPOSED RECYCLE AREA
- PROPOSED ACCESS ROADS

PROPOSED FRAC POND AND ACCESS ROADS FOR:

XTO ENERGY INC.

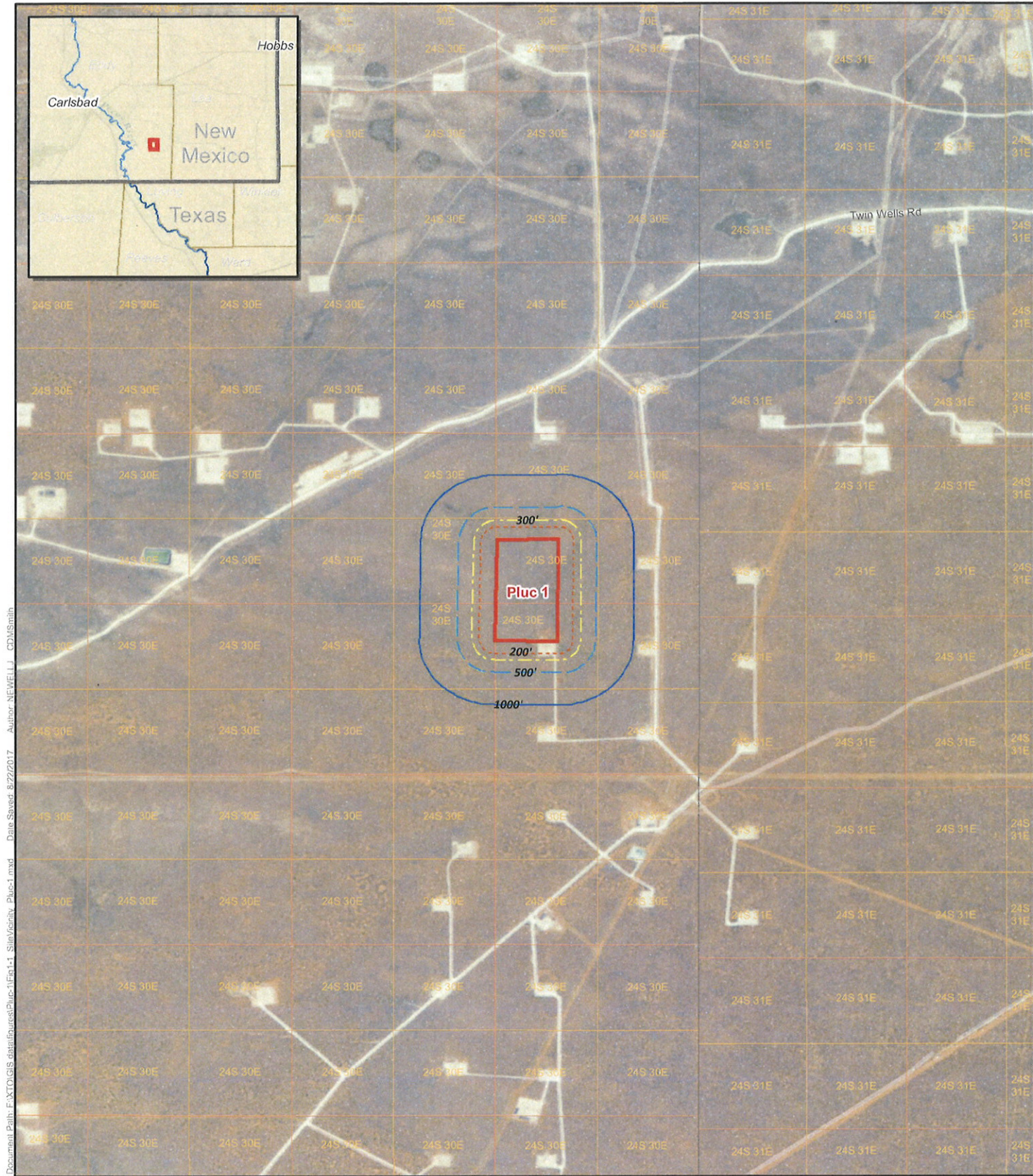
SECTION 24, TOWNSHIP 24 SOUTH, RANGE 30 EAST,
N.M.P.M., EDDY COUNTY, NEW MEXICO.

FSC INC
SURVEYORS+ENGINEERS
550 Bailey Ave., 205 - Fort Worth, TX 76107
Ph: 817.349.9800 - Fax: 979.732.5271
TBPE Firm 17957 | TBPLS Firm 10193887
www.fscinc.net
© COPYRIGHT 2016 - ALL RIGHTS RESERVED

DATE: 6-20-2017
DRAWN BY: AI
CHECKED BY: DH
FIELD CREW: RE
PROJECT NO: 2017050627
SCALE: 1" = 2000'
SHEET: 1 OF 1
REVISION: NO

Appendix F

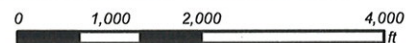
Figures







Document Path: F:\XTO\GIS data\resources\Pluc-1\Fig1-1 SiteVicinity Pluc-1.mxd Data Saved: 8/22/2017 Author: NEWELL, J. CDMSmith

Figure 1-1 Site Vicinity Map
XTO Energy Inc Proposed Pluc-1
Recycling Containment Location

 **Proposed Facility Boundary**



-  200'
-  300'
-  500'
-  1,000'

**CDM
Smith**

Service Layer Credits: Sources: Esri, DeLorme, Intermap, increment P Corp., GEBCO, USGS, FAO, NPS, NGA, IGN, Swisstopo, Mapbox, OpenStreetMap contributors, and the GIS User Community
 Source: Esri, DigitalGlobe, GeoEye, Earthstar Geographics, CNES/Airbus DS, USDA, USGS, AeroGRID, IGN, and the GIS User Community

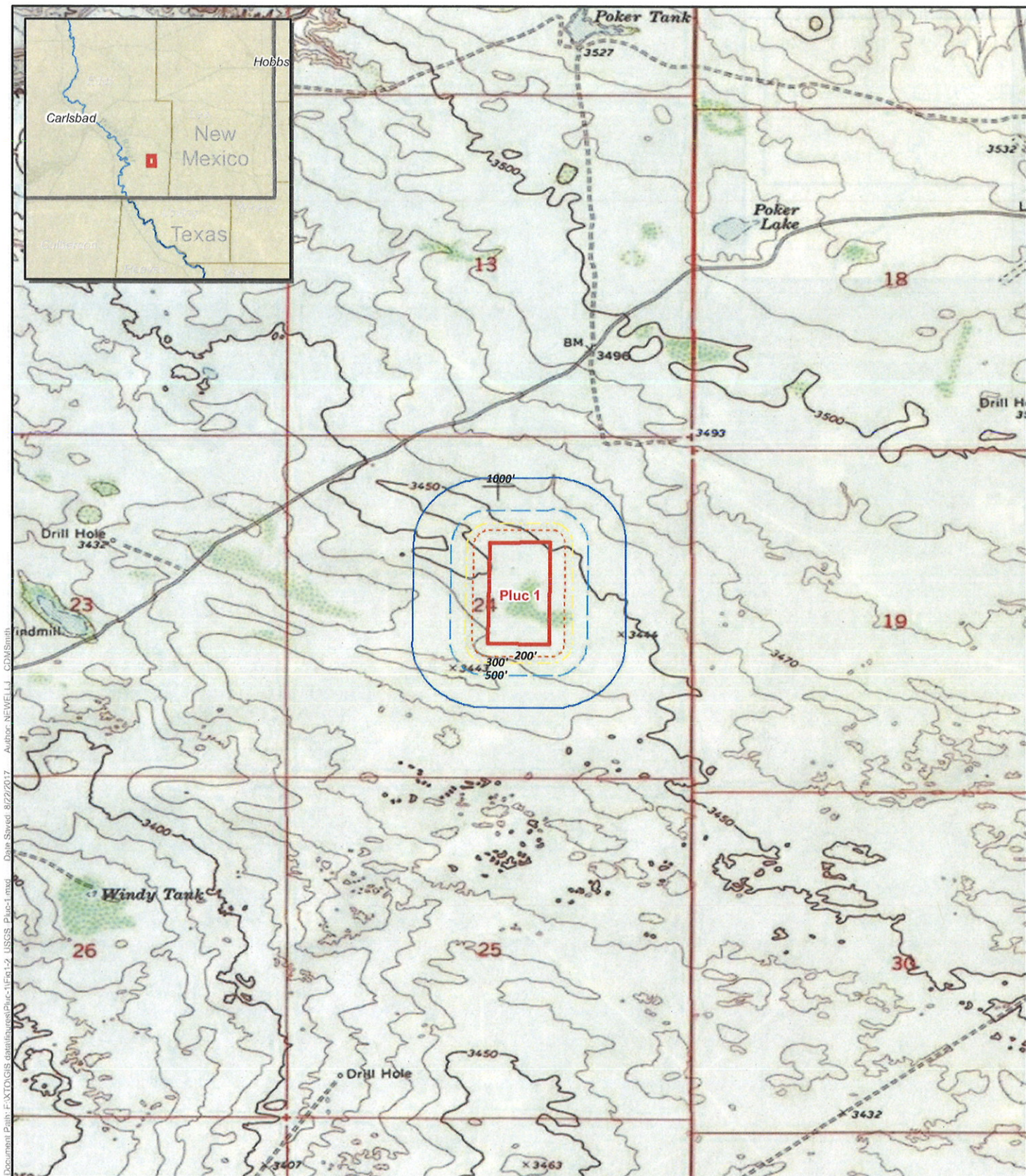

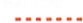





Figure 1-2 USGS 7.5 Minute Topographic Map
XTO Energy Inc Proposed Pluc-1
Recycling Containment Location

 Proposed Facility Boundary



0 1,000 2,000 4,000
ft

 200'
 300'
 500'
 1,000'

**CDM
Smith**

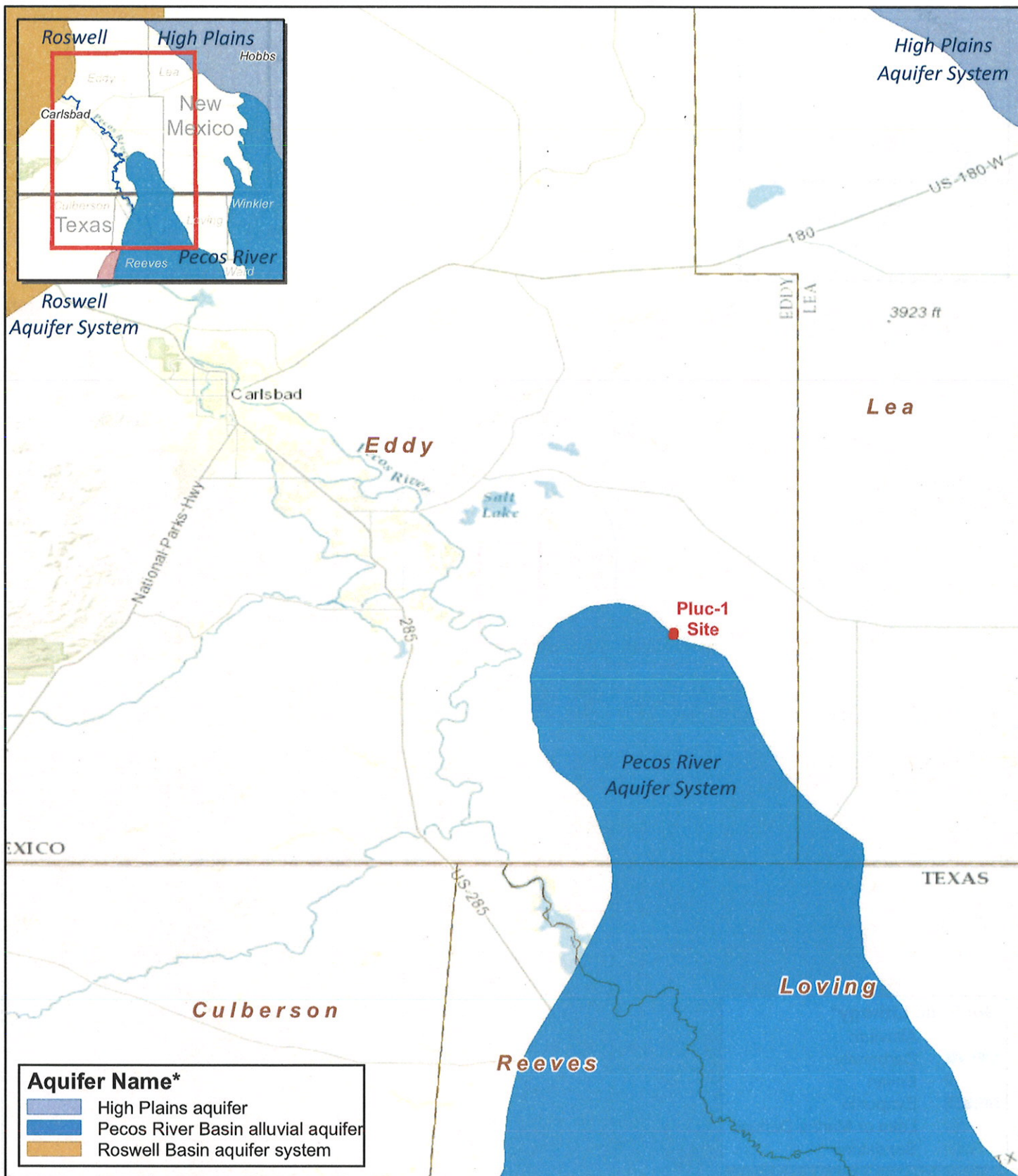



Figure 2-2 Aquifer Map
XTO Energy Inc Proposed Pluc-1
Recycling Containment Location

 Proposed Facility Boundary



0 5 10
Miles

Source: *Water Resources of the United States, U.S. Geological Survey

**CDM
Smith**

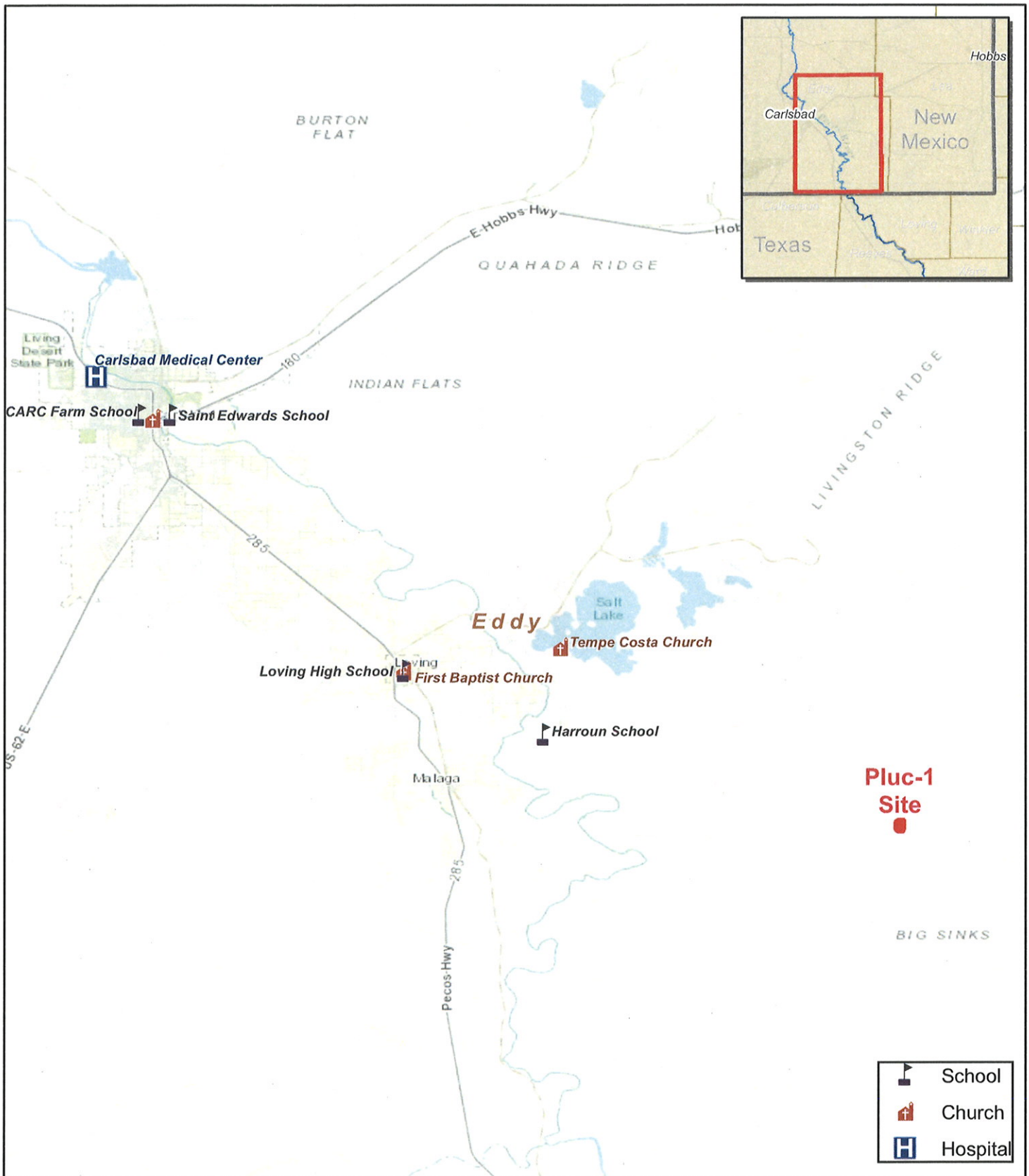


Figure 2-3 Distance From Structures Map
XTO Energy Inc Proposed Pluc-1
Recycling Containment Location

Proposed Facility Boundary



0 5 Miles



**CDM
Smith**

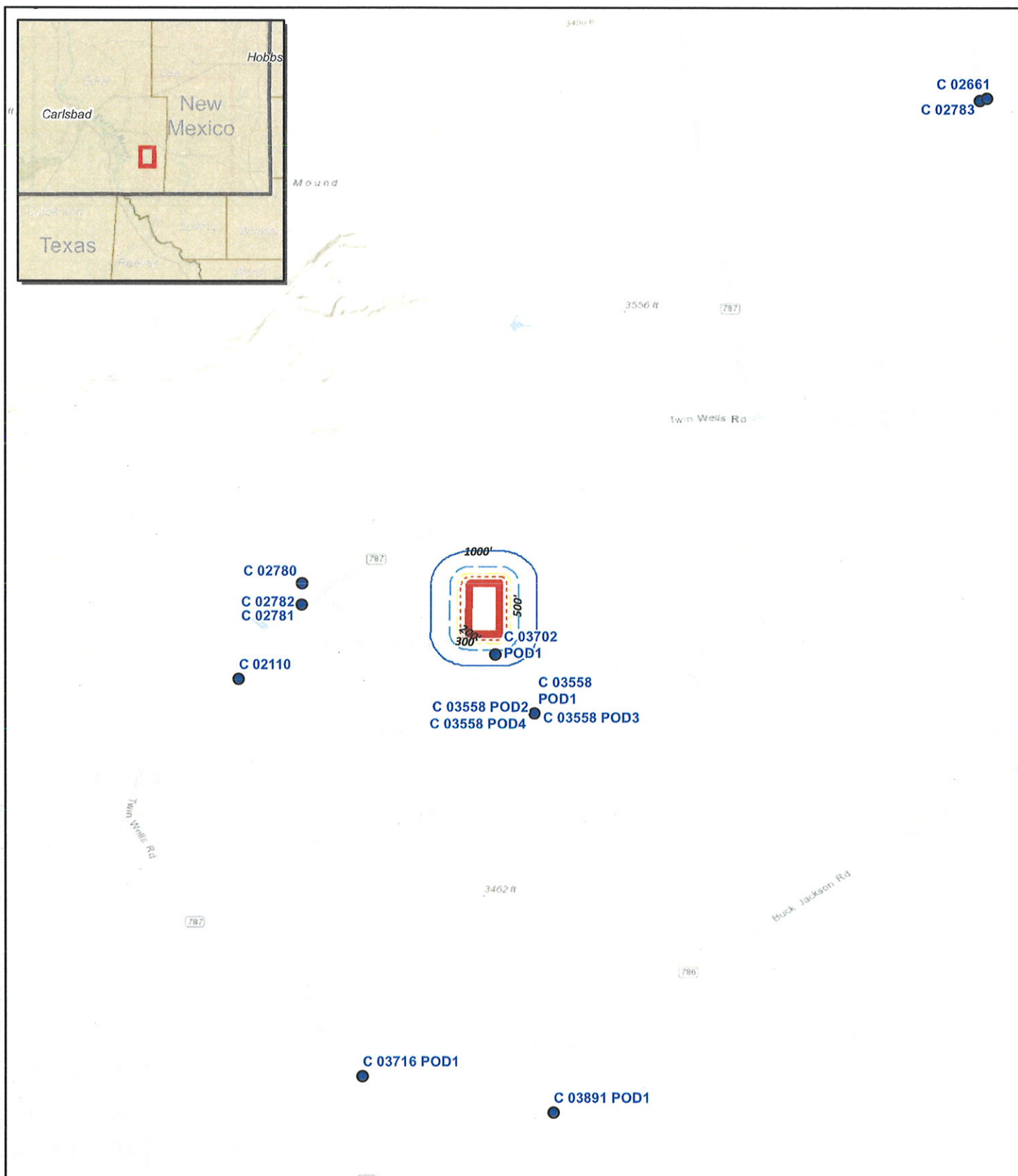
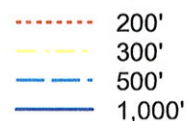


Figure 2-4 Distance From Wells Map
XTO Energy Inc Proposed Powerpuff
Recycling Containment Location

-  Wells*
 Proposed Facility Boundary

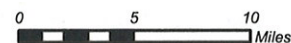
Source: *New Mexico Office of the State Engineer



**CDM
Smith**

Figure 2-5 Distance From Municipalities and Freshwater Fields
XTO Energy Inc Proposed Pluc-1
Recycling Containment Location

-  Proposed Facility Boundary
  Freshwater Field*



**CDM
Smith**

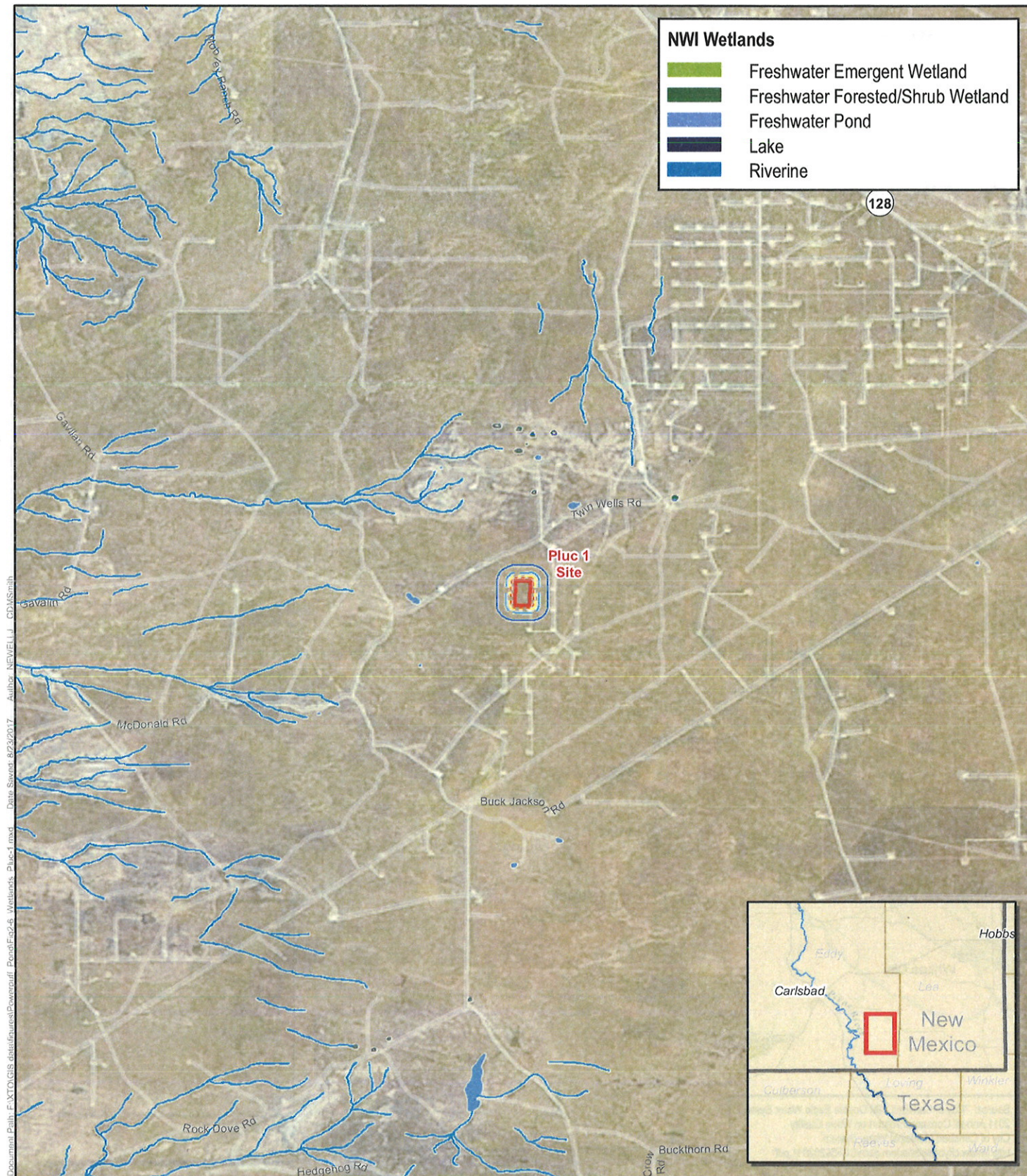
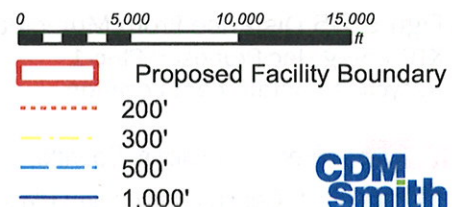


Figure 2-6 Wetlands Map
 XTO Energy Inc Proposed Pluc-1
 Recycling Containment Location



**CDM
Smith**

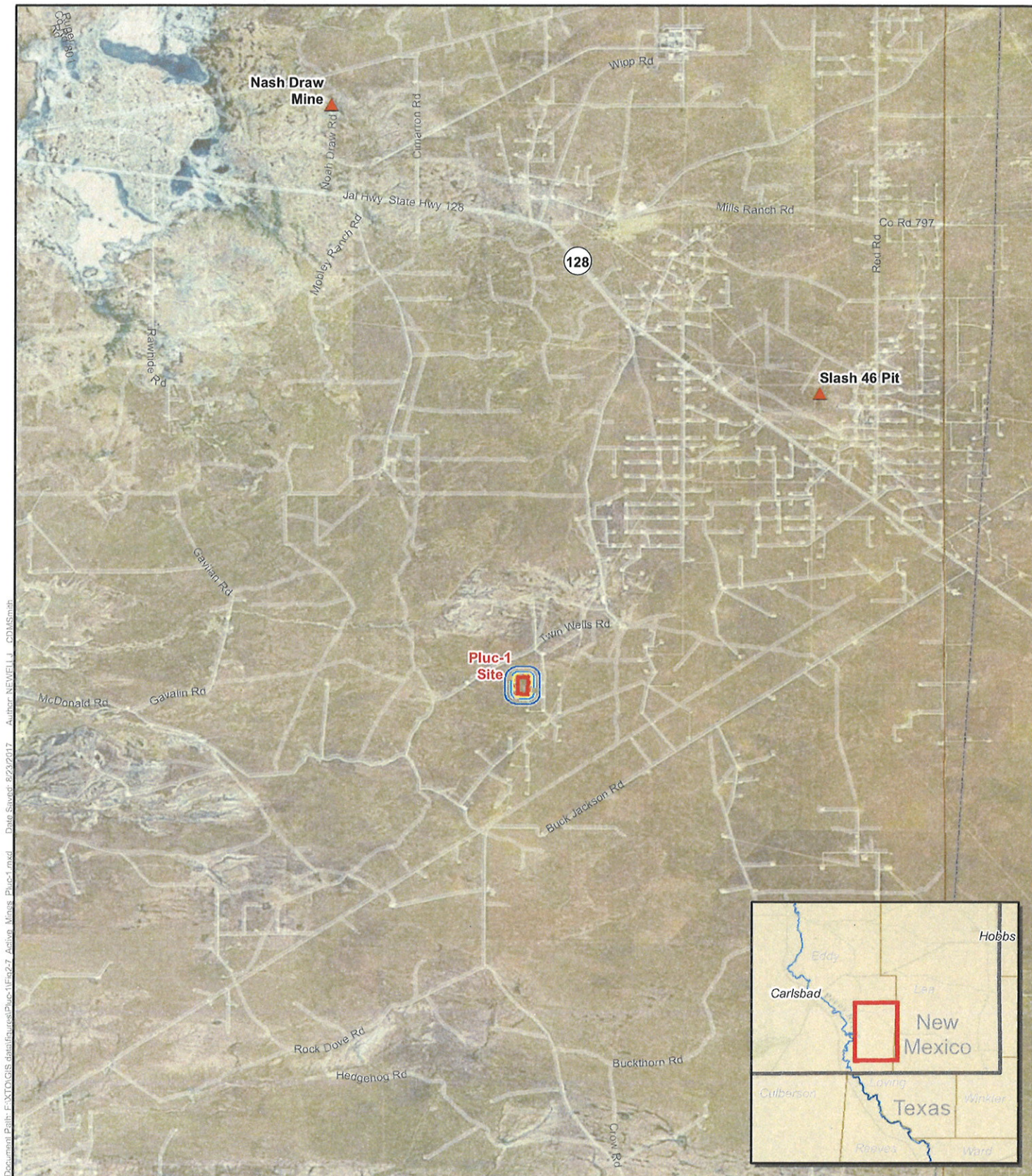


Figure 2-7 Active Mines Map
XTO Energy Inc Proposed Pluc-1
Recycling Containment Location

- ▲ Active Mine*
- Proposed Facility Boundary

Source: *New Mexico Mining and Minerals Division



0 0.5 1 2 3
Miles

- 200'
- 300'
- 500'
- 1,000'

**CDM
Smith**