

# Closure Report

## Site Description

Site Name:	Cedar Canyon 29 Fed Com #3H
Company:	Oxy USA Inc.
Legal Description:	U/L K, Section 28, T24S, R29E
County:	Eddy County, NM
GPS Coordinates:	N 32.18571 W-103.99137

## Release Data

Date of Release:	08/05/2017
Type of Release:	Oil and produced water
Source of Release:	Poly flow line failure
Volume of Release:	8 bbls oil, 2 bbls produced water
Volume Recovered:	0 bbls

## Remediation Specifications

Remediation Parameters:	Excavated the areas of SP1-SP3 to a depth of 1 foot. Excavated the areas of SP4 and SP5 to a depth of 4 feet and placed a liner in the excavation. Excavated the area of SP9 to a depth of 2 feet. The remaining areas did not require remediation. Backfill the site with clean soil.	
Remediation Activities:	08/21/2018 to 08/24/2018	
Plan Sent to OCD:	11/29/2017	Email from Cliff Brunson to Mike Bratcher
OCD Approval of Plan:	03/05/2018	Email from Mike Bratcher to Cliff Brunson
Plan Sent to BLM:	11/29/2017	Email from Cliff Brunson to Shelly Tucker
BLM Approval of Plan:	12/26/2017	Email from Shelly Tucker to Cliff Brunson

## Supporting Documentation

Initial C-141	Signed 08/08/2017
Final C-141	Upon completion
Site Diagram	August 2017
Groundwater Plot	75'
TOPO Maps	August 2017
Lab Summary	09/18/2017-09/20/2017
Lab Analysis	09/18/2017-09/20/2017
Correspondence	Request and approval of remediation plan via email

## Request for Closure

Based on the completion of the remediation plan, Oxy Permian requests closure approval from NMOCD.

Wade Dittrich, Environmental Specialist

08/27/2018

# NM OIL CONSERVATION

ARTESIA DISTRICT

District I  
1625 N. French Dr., Hobbs, NM 88240  
District II  
811 S. First St., Artesia, NM 88210  
District III  
1000 Rio Brazos Road, Aztec, NM 87410  
District IV  
1220 S. St. Francis Dr., Santa Fe, NM 87505

State of New Mexico  
Energy Minerals and Natural Resources

Oil Conservation Division  
1220 South St. Francis Dr.  
Santa Fe, NM 87505

AUG 10 2017

Form C-141  
Revised April 3, 2017

RECEIVED by appropriate District Office in accordance with 19.15.29 NMAC.

## Release Notification and Corrective Action

NAB1722640005

OPERATOR

☒ Initial Report ☐ Final Report

Name of Company	OXY USA INC	Contact	WADE DITTRICH
Address	PO BOX 4294; HOUSTON, TX 77210	Telephone No.	575-390-2828
Facility Name	CEDAR CANYON 29 FEDERAL COM #3H	Facility Type	OIL WELL

Surface Owner	Mineral Owner	FEDERAL	API No.	30-015-42993
---------------	---------------	---------	---------	--------------

## LOCATION OF RELEASE

Unit Letter	Section	Township	Range	Feet from the	North/South Line	Feet from the	East/West Line	County
H	29	24S	29E	1990	NORTH	210	EAST	EDDY

Latitude 32.190250 Longitude -103.9986 NAD83

## NATURE OF RELEASE

Type of Release	OIL & PRODUCED WATER	Volume of Release	8 bbls OIL & 2 bbls PRODUCED WATER	Volume Recovered	0 bbls
Source of Release	4 inch poly line failure	Date and Hour of Occurrence	08/05/2017	Date and Hour of Discovery	
Was Immediate Notice Given?	<input checked="" type="checkbox"/> Yes <input type="checkbox"/> No <input type="checkbox"/> Not Required	If YES, To Whom?	MIKE BRATCHER-NMOC; CRYSTAL WEAVER-NMOC; SHELLY TUCKER-BLM		
By Whom?	WADE DITTRICH	Date and Hour	08/07/2017 @ 11:38 AM	10:30 am * e-mail	
Was a Watercourse Reached?	<input type="checkbox"/> Yes <input checked="" type="checkbox"/> No	If YES, Volume Impacting the Watercourse.			

If a Watercourse was Impacted, Describe Fully.\*

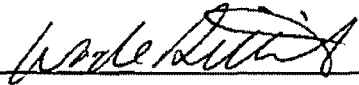
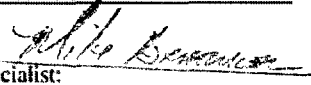
Describe Cause of Problem and Remedial Action Taken.\*

Spill occurred due to a 4 inch poly line failure. Line has been repaired and put back in service.

Describe Area Affected and Cleanup Action Taken.\*

The impacted area is approximately 25x100 FT. Leak did leave the location-leak is behind the Cedar Canyon 28 4 CTB (measurements are subject to change with GPS tracking). Remediation will be completed in accordance with a remediation plan approved by the NMOC and BLM.

I hereby certify that the information given above is true and complete to the best of my knowledge and understand that pursuant to NMOC rules and regulations all operators are required to report and/or file certain release notifications and perform corrective actions for releases which may endanger public health or the environment. The acceptance of a C-141 report by the NMOC marked as "Final Report" does not relieve the operator of liability should their operations have failed to adequately investigate and remediate contamination that pose a threat to ground water, surface water, human health or the environment. In addition, NMOC acceptance of a C-141 report does not relieve the operator of responsibility for compliance with any other federal, state, or local laws and/or regulations.

Signature:		OIL CONSERVATION DIVISION	
Printed Name:	WADE DITTRICH	Signed By:  Approved by Environmental Specialist:	
Title:	ENVIROMENTAL COORDINATOR	Approval Date:	8/10/17
E-mail Address:	wade.dittrich@oxy.com	Expiration Date:	N/A
Date:	8/8/2017	Conditions of Approval:	See attached
Phone:	575-390-2828	Attached:	SRP-4339

\* Attach Additional Sheets If Necessary

8/10/17 AB

Operator/Responsible Party,

The OCD has received the form C-141 you provided on 8/10/2017 regarding an unauthorized release. The information contained on that form has been entered into our incident database and remediation case number DRP-4334 has been assigned. **Please refer to this case number in all future correspondence.**

It is the Division's obligation under both the Oil & Gas Act and Water Quality Act to provide for the protection of public health and the environment. Our regulations (19.15.29.11 NMAC) state the following,

*The responsible person shall complete division-approved corrective action for releases that endanger public health or the environment. The responsible person shall address releases in accordance with a remediation plan submitted to and approved by the division or with an abatement plan submitted in accordance with 19.15.30 NMAC. [emphasis added]*

Release characterization is the first phase of corrective action unless the release is ongoing or is of limited volume and all impacts can be immediately addressed. Proper and cost-effective remediation typically cannot occur without adequate characterization of the impacts of any release. Furthermore, the Division has the ability to impose reasonable conditions upon the efforts it oversees. **As such, the Division is requiring a workplan for the characterization of impacts associated with this release be submitted to the OCD District 2 office in ARTESIA on or before 9/10/2017. If and when the release characterization workplan is approved, there will be an associated deadline for submittal of the resultant investigation report. Modest extensions of time to these deadlines may be granted, but only with acceptable justification.**

The goals of a characterization effort are: 1) determination of the lateral and vertical extents along with the magnitude of soil contamination. 2) determine if groundwater or surface waters have been impacted. 3) If groundwater or surface waters have been impacted, what are the extents and magnitude of that impact. 4) The characterization of any other adverse impacts that may have occurred (examples: impacts on vegetation, impacts on wildlife, air quality, loss of use of property, etc.). To meet these goals as quickly as possible, the following items must, at a minimum, be addressed in the release characterization workplan and subsequent reporting:

- Horizontal delineation of soil impacts in each of the four cardinal compass directions. Adsorbed soil contamination must be characterized for the following constituents using the associated laboratory methods: benzene, toluene, ethylbenzene, and total xylenes by either Method 8260 or 8021, total petroleum hydrocarbons by Method 8015 extended range (GRO+DRO+MRO; C<sub>6</sub> thru C<sub>36</sub>), and for chloride by Method 300. This is not an exclusive list of potential contaminants. Analyzed parameters should be modified based on the nature of the released substance(s). Soil sampling must be both within the impacted area and beyond.
- Vertical delineation of soil impacts. Adsorbed soil contamination must be characterized for the following constituents using the associated laboratory methods: benzene, toluene, ethylbenzene, and total xylenes by either Method 8260 or 8021, total petroleum hydrocarbons by Method 8015 extended range (GRO+DRO+MRO; C<sub>6</sub> thru C<sub>36</sub>), and for chloride by Method 300. As above, this is not an exclusive list of potential contaminants and can be modified. Vertical characterization samples should be taken at depth intervals no greater than five feet apart. Lithologic description of encountered soils must also be provided. At least ten vertical feet of soils with contaminant concentrations at or below these values must be demonstrated as existing above the water table.
- Nominal detection limits for field and laboratory analyses must be provided.
- Composite sampling is not generally allowed.
- Field screening and assessment techniques are acceptable (headspace, titration, EC [include algorithm for validation purposes], EM, etc.), but the sampling and assay procedures must be clearly defined. Copies of field notes are highly desirable. A statistically significant set of split samples must be submitted for confirmatory laboratory analysis, including the laterally farthest and vertically deepest sets of soil samples. Make sure there are at least two soil samples submitted

for laboratory analysis from each borehole or test pit (highest observed contamination and deepest depth investigated). Copies of the actual laboratory results must be provided including chain of custody documentation.

- Probable depth to shallowest protectable groundwater and lateral distance to nearest surface water. If there is an estimate of groundwater depth, the information used to arrive at that estimate must be provided. If there is a reasonable assumption that the depth to protectable water is 50 feet or less, the responsible party should anticipate the need for at least one groundwater monitoring well to be installed in the area of likely maximum contamination.

- If groundwater contamination is encountered, an additional investigation workplan may be required to determine the extents of that contamination. Groundwater and/or surface water samples, if any, must be analyzed by a competent laboratory for volatile organic hydrocarbons (typically Method 8260 full list), total dissolved solids, pH, major anions and cations including chloride and sulfate, dissolved iron, and dissolved manganese. The investigation workplan must provide the groundwater sampling method(s) and sample handling protocols. To the fullest extent possible, aqueous analyses must be undertaken using nominal method detection limits. As with the soil analyses, copies of the actual laboratory results must be provided including chain of custody documentation.

- Accurately scaled and well-drafted site maps must be provided providing the location of borings, test pits, monitoring wells, potentially impacted areas, and significant surface features including roads and site infrastructure that might limit either the release characterization or remedial efforts. Field sketches may be included in subsequent reporting, but should not be considered stand-alone documentation of the site's layout. Digital photographic documentation of the location and fieldwork is recommended, especially if unusual circumstances are encountered.

**Nothing herein should be interpreted to preclude emergency response actions or to imply immediate remediation by removal cannot proceed as warranted. Nonetheless, characterization of impacts and confirmation of the effectiveness of remedial efforts must still be provided to the OCD before any release incident will be closed.**

**Jim Griswold**

OCD Environmental Bureau Chief

1220 South St. Francis Drive

Santa Fe, New Mexico 87505

505-476-3465

jim.griswold@state.nm.us

## **Bratcher, Mike, EMNRD**

---

**From:** Wade\_Dittrich@oxy.com  
**Sent:** Thursday, August 10, 2017 8:56 AM  
**To:** Bratcher, Mike, EMNRD; Weaver, Crystal, EMNRD  
**Cc:** stucker@blm.gov; cbrunson@bbcinternational.com; kathy@bbcinternational.com; kswinney@bbcinternational.com; jgilkey@bbcinternational.com; Jennifer\_Smith@oxy.com  
**Subject:** Cedar Canyon 29 Fed. Com 0003H  
**Attachments:** Initial C-141-signed.pdf

All,

Attached is the **Initial C-141**. Please review and let me know if you have any questions. Thank you.

Wade Dittrich  
**Environmental Coordinator**  
**Oxy Permian-New Mexico**  
575.390.2828 cell  
**Wade\_Dittrich@Oxy.com**

## Weaver, Crystal, EMNRD

---

**From:** Wade\_Dittrich@oxy.com  
**Sent:** Monday, August 7, 2017 10:42 AM  
**To:** Bratcher, Mike, EMNRD; Weaver, Crystal, EMNRD  
**Cc:** stucker@blm.gov; cbrunson@bbcinternational.com; kathy@bbcinternational.com; jgilkey@bbcinternational.com; kswinney@bbcinternational.com; Jennifer\_Smith@oxy.com  
**Subject:** RE: Cedar Canyon 29 St. 0003H

Correction on report—It is the **Cedar Canyon 29 State 0003H**-sorry

Wade Dittrich  
**Environmental Coordinator**  
**Oxy Permian-New Mexico**  
575.390.2828 cell  
**Wade\_Dittrich@Oxy.com**

---

**From:** Dittrich, John W (Ervin Well Site Consultants)  
**Sent:** Monday, August 7, 2017 10:38 AM \*  
**To:** 'Bratcher, Mike, EMNRD' <mike.bratcher@state.nm.us>; 'Weaver, Crystal, EMNRD' <Crystal.Weaver@state.nm.us>  
**Cc:** 'stucker@blm.gov' <stucker@blm.gov>; cbrunson@bbcinternational.com; kathy@bbcinternational.com; Jennifer Gilkey <jgilkey@bbcinternational.com>; kswinney@bbcinternational.com; Smith, Jennifer A <Jennifer\_Smith@oxy.com>  
**Subject:** Cedar Canyon 29 St. 0003H

All,  
This is to inform you that Oxy Permian had a **Reportable** release in **Eddy County** at the Cedar Canyon 2 SWD Battery on 8/5/2017.

- **Release Location:** Legal -29-24S-29E, API: 30-015-214250
- **Release Volume:** 8 bbls of Oil and 2 bbls of Produced Water.
- **Recovered:** 0 bbls recovered
- **Cause of Release:** 4 inch poly line failure
- **Approximate Area impacted by release:** 25x100 FT, Leak did leave the location-leak is behind the Cedar Canyon 28 4 CTB (measurements are subject to change with GPS tracking)
- **GPS Coordinates and Driving Direction:** 32.190250 , -103.9986 FROM CARLSBAD NM TAKE HWY 285 GOING SOUTH TO MALAGA TURN LEFT ON DUERTE RD GO 3 MILES TURN RIGHT ON MCDONALD ROAD AND GO 6 MILES TURN RIGHT TO THE LOCATION

Please let me know if you have any questions.

Wade Dittrich  
**Environmental Coordinator**  
**Oxy Permian-New Mexico**

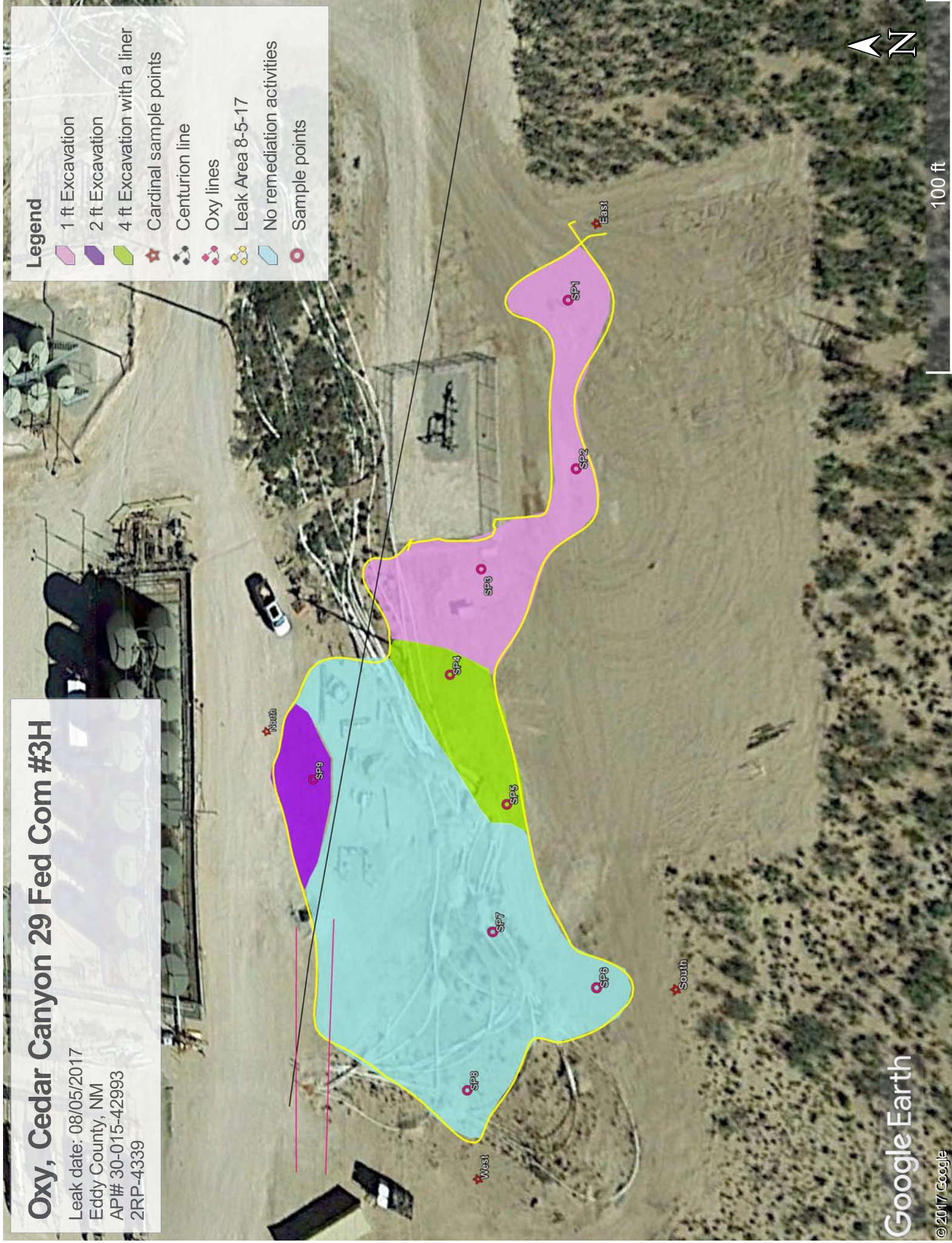


# Oxy, Cedar Canyon 29 Fed Com #3H

Leak date: 08/05/2017  
Eddy County, NM  
AP# 30-015-42993  
2RP-4339

## Legend

- 1 ft Excavation
- 2 ft Excavation
- 4 ft Excavation with a liner
- Cardinal sample points
- Centurion line
- Oxy lines
- Leak Area 8-5-17
- No remediation activities
- Sample points



Oxy, Cedar Canyon 29 Fed Com  
#3H

Sample points, hand auger

SP1, N 32.18572 W-103.99140

SP2, N 32.18571 W-103.99157

SP3, N 32.18581 W-103.99167

SP4, N 32.18584 W-103.99178

SP5, N 32.18577 W-103.99191

SP6, N 32.18569 W-103.99208

SP7, N 32.18579 W-103.99204

SP8, N 32.18582 W-103.99221

SP9, N 32.18599 W-103.99190

NORTH, N 32.18605 W-103.99185

SOUTH, N 32.18562 W-103.99207

EAST, N 32.18570 W-103.99133

WEST, N 32.18581 W-103.99230



**Oxy, Cedar Canyon 29 Fed Com #3H**

**U/L K, Section 28, T24S, R29E**

**Groundwater: 75'**





# *New Mexico Office of the State Engineer*

## Water Column/Average Depth to Water

(quarters are 1=NW 2=NE 3=SW 4=SE)

(quarters are smallest to largest) (NAD83 UTM in meters)

No records found.

### UTMNAD83 Radius Search (in meters):

**Easting (X):** 595056

**Northing (Y):** 3561557

**Radius:** 1700

The data is furnished by the NMOSE/ISC and is accepted by the recipient with the expressed understanding that the OSE/ISC make no warranties, expressed or implied, concerning the accuracy, completeness, reliability, usability, or suitability for any particular purpose of the data.

9/5/17 10:21 AM

WATER COLUMN/ AVERAGE  
DEPTH TO WATER

Public Land Survey System (PLSS)

Q64:

Q16:

NE

Q4:

SW

Sec:

28

Tws:

24S

Rng:

29E

State Plane Coordinate System - NAD27

X:

0

ft

Y:

0

ft

Zone:

State Plane Coordinate System - NAD83

X:

0

ft

Y:

0

ft

Zone:

Degrees/Minutes/Seconds

Longitude (X):

Degrees:

0

°

Minutes:

0

'

Seconds:

0

"

Latitude (Y):

Degrees:

0

°

Minutes:

0

'

Seconds:

0

"

UTM - NAD27

Easting (X):

0

mtrs

Northing (Y):

0

mtrs

Zone:

SUBMIT

All Conversion Results are displayed as NAD 1983 UTM Zone 13

Easting (X):

595056.0

mtrs

Northing (Y):

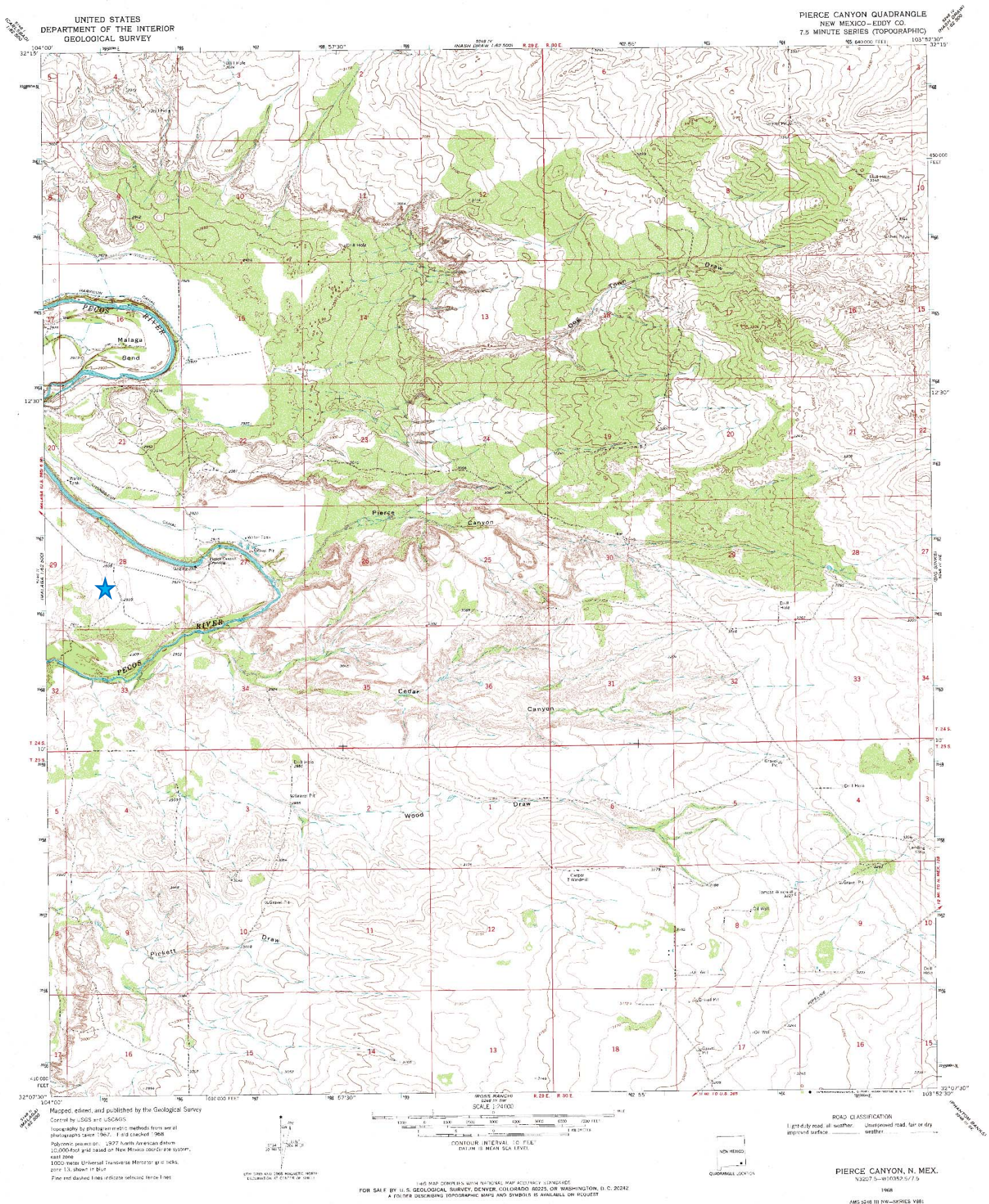
3561557.0

mtrs

~~ Please keep screen open to copy UTM values for Reports. ~~

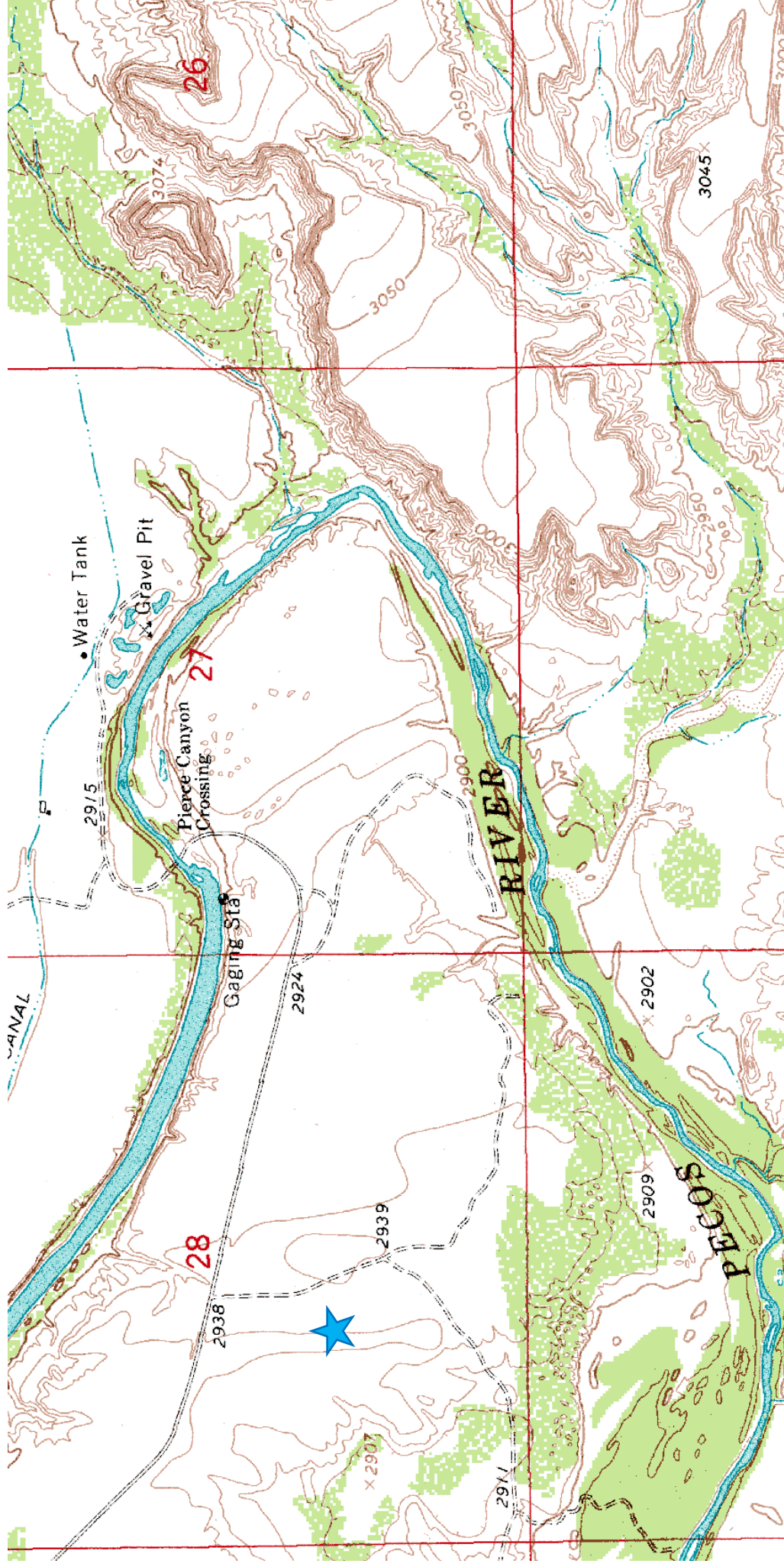


# Oxy, Cedar Canyon 29 Fed Com #3H





## Oxy, Cedar Canyon 29 Fed Com #3H



Laboratory Analytical Results Summary  
Cedar Canyon 29 Fed Com #003H

	Analyte	Method	Sample ID Date	SP1 @ 1'	SP1 @ 3'	SP1 @ 4'	SP1 @ 5'	SP1 @ 10'	SP1 @ 15'
				mg/kg	mg/kg	mg/kg	mg/kg	mg/kg	mg/kg
	Benzene	BTEX 8021B		<0.050	<0.050	<0.050	n/a	n/a	<0.050
	Toluene	BTEX 8021B		<0.050	<0.050	<0.050	n/a	n/a	<0.050
	Ethylbenzene	BTEX 8021B		<0.050	<0.050	<0.050	n/a	n/a	<0.050
	Total Xylenes	BTEX 8021B		<0.150	<0.150	<0.150	n/a	n/a	<0.150
	Total BTEX	BTEX 8021B		<0.300	<0.300	<0.300	n/a	n/a	<0.300
	Chloride	SW4500Cl-B		1680	560	336	64	32	16
	GRO	TPH 8015M		<10.0	<10.0	<10.0	n/a	n/a	<10.0
	DRO	TPH 8015M		<10.0	<10.0	<10.0	n/a	n/a	<10.0
	EXT DRO	TPH 8015M		<10.0	<10.0	<10.0	n/a	n/a	<10.0

		Sample ID	SP2 @ 1'	SP2 @ 3'	SP2 @ 4'	SP2 @ 5'	SP2 @ 10'	SP2 @ 15'
Analyte	Method	Date	mg/kg	mg/kg	mg/kg	mg/kg	mg/kg	mg/kg
Benzene	BTEX 8021B		<0.050	<0.050	<0.050	n/a	n/a	<0.050
Toluene	BTEX 8021B		<0.050	<0.050	<0.050	n/a	n/a	<0.050
Ethylbenzene	BTEX 8021B		<0.050	<0.050	<0.050	n/a	n/a	<0.050
Total Xylenes	BTEX 8021B		<0.150	<0.150	<0.150	n/a	n/a	<0.150
Total BTEX	BTEX 8021B		<0.300	<0.300	<0.300	n/a	n/a	<0.300
Chloride	SM4500Cl-B		1600	464	320	32	16	16
GRO	TPH 8015M		<10.0	<10.0	<10.0	n/a	n/a	<10.0
DRO	TPH 8015M		<10.0	<10.0	<10.0	n/a	n/a	<10.0
EXT DRO	TPH 8015M		<10.0	<10.0	<10.0	n/a	n/a	<10.0

		Sample ID	SP3 @ 1'	SP3 @ 3'	SP3 @ 4'	SP3 @ 5'	SP3 @ 10'	SP3 @ 15'
	Analyte	Method	Date	mg/kg	mg/kg	mg/kg	mg/kg	mg/kg
	Benzene	BTEX 8021B		<0.050	<0.050	n/a	n/a	<0.050
	Toluene	BTEX 8021B		<0.050	<0.050	n/a	n/a	<0.050
	Ethylbenzene	BTEX 8021B		<0.050	<0.050	n/a	n/a	<0.050
	Total Xylenes	BTEX 8021B		<0.150	<0.150	n/a	n/a	<0.150
	Total BTEX	BTEX 8021B		<0.300	<0.300	n/a	n/a	<0.300
	Chloride	SW4400C1-B		1620	512	304	16	32
	GRO	TPH 8015M		<10.0	<10.0	<10.0	n/a	<10.0
	DRO	TPH 8015M		<10.0	<10.0	<10.0	n/a	<10.0
	EXT DRO	TPH 8015M		<10.0	<10.0	<10.0	n/a	<10.0

		Sample ID	SP4 @ 1'	SP4 @ 2'	SP4 @ 4'	SP4 @ 6'	SP4 @ 8'	SP4 @ 11'	SP4 @ 14'	SP4 @ 16'	SP4 @ 17'	SP4 @ 18'
Analyte	Method	Date	mg/kg	mg/kg	mg/kg	mg/kg	mg/kg	mg/kg	mg/kg	mg/kg	mg/kg	mg/kg
Benzene	BTEX 8021B		<0.050	<0.050	<0.050	n/a	<0.050	n/a	n/a	n/a	n/a	<0.050
Toluene	BTEX 8021B		<0.050	<0.050	<0.050	n/a	<0.050	n/a	n/a	n/a	n/a	<0.050
Ethylbenzene	BTEX 8021B		<0.050	<0.050	<0.050	n/a	<0.050	n/a	n/a	n/a	n/a	<0.050
Total Xylenes	BTEX 8021B		0.427	<0.150	<0.150	n/a	<0.150	n/a	n/a	n/a	n/a	<0.150
Total BTEX	BTEX 8021B		0.427	<0.300	<0.300	n/a	<0.300	n/a	n/a	n/a	n/a	<0.300
Chloride	SM4500Cl-B		2320	3320	4880	2720	816	960	896	416	432	16
GRO	TPH 8015M		67	10.5	<10.0	n/a	<10.0	n/a	n/a	n/a	n/a	<10.0
DRO	TPH 8015M		3280	1600	73	n/a	<10.0	n/a	n/a	n/a	n/a	<10.0
EXT DRO	TPH 8015M		578	355	40.9	n/a	<10.0	n/a	n/a	n/a	n/a	<10.0



Laboratory Analytical Results Summary  
Cedar Canyon 29 Fed Com #003H

		Sample ID	SP5 @ 1'	SP5 @ 2'	SP5 @ 3'	SP5 @ 4'	SP5 @ 5'	SP5 @ 6'	SP5 @ 7'	SP5 @ 8'	SP5 @ 13'	SP5 @ 18'
Analyte	Method	Date	9/19/17 mg/kg	9/19/17 mg/kg	9/19/17 mg/kg	9/19/17 mg/kg	9/19/17 mg/kg	9/19/17 mg/kg	9/19/17 mg/kg	9/19/17 mg/kg	9/19/17 mg/kg	9/19/17 mg/kg
Benzene	BTEX 8021B		<0.050	<0.050	<0.050	<0.050	<0.050	n/a	n/a	n/a	n/a	<0.050
Toluene	BTEX 8021B		<0.050	<0.050	<0.050	<0.050	<0.050	n/a	n/a	n/a	n/a	<0.050
Ethylbenzene	BTEX 8021B		<0.050	<0.050	<0.050	<0.050	<0.050	n/a	n/a	n/a	n/a	<0.050
Total Xylenes	BTEX 8021B		<0.150	<0.150	<0.150	<0.150	<0.150	n/a	n/a	n/a	n/a	<0.150
Total BTEX	BTEX 8021B		<0.300	<0.300	<0.300	<0.300	<0.300	<0.300	n/a	n/a	n/a	<0.300
Chloride	SM4500Cl-B		1220	272	1440	1420	1280	560	576	208	256	224
GRO	TPH 8015M		<10.0	<10.0	<10.0	<10.0	<10.0	n/a	n/a	n/a	n/a	<10.0
DRO	TPH 8015M		<10.0	<10.0	<10.0	<10.0	<10.0	n/a	n/a	n/a	n/a	<10.0
EXT DRO	TPH 8015M		<10.0	<10.0	<10.0	<10.0	<10.0	n/a	n/a	n/a	n/a	<10.0

		Sample ID	SP6 @ SURFACE	SP6 @ 1'	SP6 @ 6'	SP6 @ 11'
Analyte	Method	Date	9/20/17 mg/kg	9/20/17 mg/kg	9/20/17 mg/kg	9/20/17 mg/kg
Benzene	BTEX 8021B		<0.050	<0.050	<0.050	<0.050
Toluene	BTEX 8021B		<0.050	<0.050	<0.050	<0.050
Ethylbenzene	BTEX 8021B		<0.050	<0.050	<0.050	<0.050
Total Xylenes	BTEX 8021B		<0.150	<0.150	<0.150	<0.150
Total BTEX	BTEX 8021B		<0.300	<0.300	<0.300	<0.300
Chloride	SM4500Cl-B		176	32	32	16
GRO	TPH 8015M		<10.0	<10.0	<10.0	<10.0
DRO	TPH 8015M		<10.0	<10.0	<10.0	<10.0
EXT DRO	TPH 8015M		<10.0	<10.0	<10.0	<10.0

		Sample ID	SP7 @ SURFACE	SP7 @ 1'	SP7 @ 6'	SP7 @ 11'
Analyte	Method	Date	9/20/17 mg/kg	9/20/17 mg/kg	9/20/17 mg/kg	9/20/17 mg/kg
Benzene	BTEX 8021B		<0.050	<0.050	<0.050	<0.050
Toluene	BTEX 8021B		<0.050	<0.050	<0.050	<0.050
Ethylbenzene	BTEX 8021B		<0.050	<0.050	<0.050	<0.050
Total Xylenes	BTEX 8021B		<0.150	<0.150	<0.150	<0.150
Total BTEX	BTEX 8021B		<0.300	<0.300	<0.300	<0.300
Chloride	SM4500Cl-B		<16.0	<16.0	32	<16.0
GRO	TPH 8015M		<10.0	<10.0	<10.0	<10.0
DRO	TPH 8015M		138	<10.0	<10.0	<10.0
EXT DRO	TPH 8015M		59.6	<10.0	<10.0	<10.0

		Sample ID	SP8 @ SURFACE	SP8 @ 1'	SP8 @ 6'	SP8 @ 11'
Analyte	Method	Date	9/20/17 mg/kg	9/20/17 mg/kg	9/20/17 mg/kg	9/20/17 mg/kg
Benzene	BTEX 8021B		<0.050	<0.050	<0.050	<0.050
Toluene	BTEX 8021B		<0.050	<0.050	<0.050	<0.050
Ethylbenzene	BTEX 8021B		<0.050	<0.050	<0.050	<0.050
Total Xylenes	BTEX 8021B		<0.150	<0.150	<0.150	<0.150
Total BTEX	BTEX 8021B		<0.300	<0.300	<0.300	<0.300
Chloride	SM4500Cl-B		224	80	224	368
GRO	TPH 8015M		<10.0	<10.0	<10.0	<10.0
DRO	TPH 8015M		<10.0	<10.0	<10.0	<10.0
EXT DRO	TPH 8015M		<10.0	<10.0	<10.0	<10.0

Analyte	Method	Sample ID Date	SP9 @ 1'	SP9 @ 2'	SP9 @ 4'	SP9 @ 6'	SP9 @ 7'	SP9 @ 12'	SP9 @ 17'
			mg/kg 9/20/17	mg/kg 9/20/17	mg/kg 9/20/17	mg/kg 9/20/17	mg/kg 9/20/17	mg/kg 9/20/17	mg/kg 9/20/17
Benzene	BTEX 8021B		<0.050	n/a	<0.050	<0.050	n/a	n/a	<0.050
Toluene	BTEX 8021B		<0.050	n/a	<0.050	<0.050	n/a	n/a	<0.050
Ethylbenzene	BTEX 8021B		<0.050	n/a	<0.050	<0.050	n/a	n/a	<0.050
Total Xylenes	BTEX 8021B		<0.150	n/a	<0.150	<0.150	n/a	n/a	<0.150
Total BTEX	BTEX 8021B		<0.300	n/a	<0.300	<0.300	n/a	n/a	<0.300
Chloride	SM4500Cl-B		432	1620	784	752	240	304	336
GRO	TPH 8015M		<10.0	n/a	<10.0	<10.0	n/a	n/a	<10.0
DRO	TPH 8015M		1090	n/a	<10.0	<10.0	n/a	n/a	<10.0
EXT DRO	TPH 8015M		224	n/a	11.4	<10.0	n/a	n/a	<10.0

CARDINAL POINTS Analyte	Method	Sample ID Date	NORTH @ SURFACE	EAST @ SURFACE	WEST @ SURFACE	SOUTH @ SURFACE
			mg/kg 9/20/17	mg/kg 9/20/17	mg/kg 9/20/17	mg/kg 9/20/17
Benzene	BTEX 8021B		<0.050	<0.050	<0.050	<0.050
Toluene	BTEX 8021B		<0.050	<0.050	<0.050	<0.050
Ethylbenzene	BTEX 8021B		<0.050	<0.050	<0.050	<0.050
Total Xylenes	BTEX 8021B		<0.150	<0.150	<0.150	<0.150
Total BTEX	BTEX 8021B		<0.300	<0.300	<0.300	<0.300
Chloride	SM4500Cl-B		32	32	48	16
GRO	TPH 8015M		<10.0	<10.0	<10.0	<10.0
DRO	TPH 8015M		<10.0	<10.0	<10.0	<10.0
EXT DRO	TPH 8015M		<10.0	<10.0	<10.0	<10.0



PHONE (575) 393-2326 ° 101 E. MARLAND ° HOBBS, NM 88240

---

September 29, 2017

Cliff Brunson

BBC International, Inc.

P.O. Box 805

Hobbs, NM 88241

RE: CEDAR CANYON 29 FED COM #3H

Enclosed are the results of analyses for samples received by the laboratory on 09/22/17 9:03.

Cardinal Laboratories is accredited through Texas NELAP under certificate number T104704398-16-8. Accreditation applies to drinking water, non-potable water and solid and chemical materials. All accredited analytes are denoted by an asterisk (\*). For a complete list of accredited analytes and matrices visit the TCEQ website at [www.tceq.texas.gov/field/qa/lab\\_accred\\_certif.html](http://www.tceq.texas.gov/field/qa/lab_accred_certif.html).

Cardinal Laboratories is accredited through the State of Colorado Department of Public Health and Environment for:

Method EPA 552.2	Haloacetic Acids (HAA-5)
Method EPA 524.2	Total Trihalomethanes (TTHM)
Method EPA 524.4	Regulated VOCs (V1, V2, V3)

Accreditation applies to public drinking water matrices.

This report meets NELAP requirements and is made up of a cover page, analytical results, and a copy of the original chain-of-custody. If you have any questions concerning this report, please feel free to contact me.

Sincerely,

A handwritten signature in black ink that reads "Celey D. Keene". The signature is written in a cursive, flowing style.

Celey D. Keene

Lab Director/Quality Manager

**Analytical Results For:**

BBC International, Inc.  
Cliff Brunson  
P.O. Box 805  
Hobbs NM, 88241  
Fax To: (575) 397-0397

Received:	09/22/2017	Sampling Date:	09/18/2017
Reported:	09/29/2017	Sampling Type:	Soil
Project Name:	CEDAR CANYON 29 FED COM #3H	Sampling Condition:	Cool & Intact
Project Number:	NONE GIVEN	Sample Received By:	Tamara Oldaker
Project Location:	EDDY COUNTY		

**Sample ID: SP 1 @ 1 (H702583-01)**

BTX 8021B		mg/kg		Analyzed By: MS					
Analyte	Result	Reporting Limit	Analyzed	Method Blank	BS	% Recovery	True Value QC	RPD	Qualifier
Benzene*	<0.050	0.050	09/27/2017	ND	2.18	109	2.00	2.29	
Toluene*	<0.050	0.050	09/27/2017	ND	1.96	98.0	2.00	2.86	
Ethylbenzene*	<0.050	0.050	09/27/2017	ND	1.98	98.9	2.00	3.52	
Total Xylenes*	<0.150	0.150	09/27/2017	ND	6.02	100	6.00	2.83	
Total BTX	<0.300	0.300	09/27/2017	ND					

Surrogate: 4-Bromofluorobenzene (PID) 104 % 72-148

Chloride, SM4500Cl-B		mg/kg		Analyzed By: AC					
Analyte	Result	Reporting Limit	Analyzed	Method Blank	BS	% Recovery	True Value QC	RPD	Qualifier
Chloride	1680	16.0	09/26/2017	ND	416	104	400	0.00	

TPH 8015M		mg/kg		Analyzed By: MS					
Analyte	Result	Reporting Limit	Analyzed	Method Blank	BS	% Recovery	True Value QC	RPD	Qualifier
GRO C6-C10	<10.0	10.0	09/25/2017	ND	191	95.6	200	0.722	
DRO >C10-C28	<10.0	10.0	09/25/2017	ND	207	104	200	0.377	
EXT DRO >C28-C36	<10.0	10.0	09/25/2017	ND					

Surrogate: 1-Chlorooctane 78.1 % 28.3-164

Surrogate: 1-Chlorooctadecane 75.4 % 34.7-157

Cardinal Laboratories

\*=Accredited Analyte

PLEASE NOTE: Liability and Damages. Cardinal's liability and client's exclusive remedy for any claim arising, whether based in contract or tort, shall be limited to the amount paid by client for analyses. All claims, including those for negligence and any other cause whatsoever shall be deemed waived unless made in writing and received by Cardinal within thirty (30) days after completion of the applicable service. In no event shall Cardinal be liable for incidental or consequential damages, including, without limitation, business interruptions, loss of use, or loss of profits incurred by client, its subsidiaries, affiliates or successors arising out of or related to the performance of the services hereunder by Cardinal, regardless of whether such claim is based upon any of the above stated reasons or otherwise. Results relate only to the samples identified above. This report shall not be reproduced except in full with written approval of Cardinal Laboratories.



Celey D. Keene, Lab Director/Quality Manager

**Analytical Results For:**

BBC International, Inc.  
Cliff Brunson  
P.O. Box 805  
Hobbs NM, 88241  
Fax To: (575) 397-0397

Received:	09/22/2017	Sampling Date:	09/18/2017
Reported:	09/29/2017	Sampling Type:	Soil
Project Name:	CEDAR CANYON 29 FED COM #3H	Sampling Condition:	Cool & Intact
Project Number:	NONE GIVEN	Sample Received By:	Tamara Oldaker
Project Location:	EDDY COUNTY		

**Sample ID: SP 1 @ 3 (H702583-02)**

BTX 8021B		mg/kg		Analyzed By: MS						
Analyte	Result	Reporting Limit	Analyzed	Method Blank	BS	% Recovery	True Value QC	RPD	Qualifier	
Benzene*	<0.050	0.050	09/27/2017	ND	2.18	109	2.00	2.29		
Toluene*	<0.050	0.050	09/27/2017	ND	1.96	98.0	2.00	2.86		
Ethylbenzene*	<0.050	0.050	09/27/2017	ND	1.98	98.9	2.00	3.52		
Total Xylenes*	<0.150	0.150	09/27/2017	ND	6.02	100	6.00	2.83		
Total BTX	<0.300	0.300	09/27/2017	ND						

Surrogate: 4-Bromofluorobenzene (PID) 104 % 72-148

Chloride, SM4500CI-B		mg/kg		Analyzed By: AC						
Analyte	Result	Reporting Limit	Analyzed	Method Blank	BS	% Recovery	True Value QC	RPD	Qualifier	
Chloride	560	16.0	09/26/2017	ND	416	104	400	0.00		

TPH 8015M		mg/kg		Analyzed By: MS					
Analyte	Result	Reporting Limit	Analyzed	Method Blank	BS	% Recovery	True Value QC	RPD	Qualifier
GRO C6-C10	<10.0	10.0	09/25/2017	ND	191	95.6	200	0.722	
DRO >C10-C28	<10.0	10.0	09/25/2017	ND	207	104	200	0.377	
EXT DRO >C28-C36	<10.0	10.0	09/25/2017	ND					

Surrogate: 1-Chlorooctane 78.1 % 28.3-164

Surrogate: 1-Chlorooctadecane 76.1 % 34.7-157

Cardinal Laboratories

\*=Accredited Analyte

PLEASE NOTE: Liability and Damages. Cardinal's liability and client's exclusive remedy for any claim arising, whether based in contract or tort, shall be limited to the amount paid by client for analyses. All claims, including those for negligence and any other cause whatsoever shall be deemed waived unless made in writing and received by Cardinal within thirty (30) days after completion of the applicable service. In no event shall Cardinal be liable for incidental or consequential damages, including, without limitation, business interruptions, loss of use, or loss of profits incurred by client, its subsidiaries, affiliates or successors arising out of or related to the performance of the services hereunder by Cardinal, regardless of whether such claim is based upon any of the above stated reasons or otherwise. Results relate only to the samples identified above. This report shall not be reproduced except in full with written approval of Cardinal Laboratories.



Celey D. Keene, Lab Director/Quality Manager

**Analytical Results For:**

BBC International, Inc.  
Cliff Brunson  
P.O. Box 805  
Hobbs NM, 88241  
Fax To: (575) 397-0397

Received:	09/22/2017	Sampling Date:	09/18/2017
Reported:	09/29/2017	Sampling Type:	Soil
Project Name:	CEDAR CANYON 29 FED COM #3H	Sampling Condition:	Cool & Intact
Project Number:	NONE GIVEN	Sample Received By:	Tamara Oldaker
Project Location:	EDDY COUNTY		

**Sample ID: SP 1 @ 4 (H702583-03)**

BTX 8021B		mg/kg		Analyzed By: MS						
Analyte	Result	Reporting Limit	Analyzed	Method Blank	BS	% Recovery	True Value QC	RPD	Qualifier	
Benzene*	<0.050	0.050	09/27/2017	ND	2.18	109	2.00	2.29		
Toluene*	<0.050	0.050	09/27/2017	ND	1.96	98.0	2.00	2.86		
Ethylbenzene*	<0.050	0.050	09/27/2017	ND	1.98	98.9	2.00	3.52		
Total Xylenes*	<0.150	0.150	09/27/2017	ND	6.02	100	6.00	2.83		
Total BTX	<0.300	0.300	09/27/2017	ND						

Surrogate: 4-Bromofluorobenzene (PID) 102 % 72-148

Chloride, SM4500Cl-B		mg/kg		Analyzed By: AC					
Analyte	Result	Reporting Limit	Analyzed	Method Blank	BS	% Recovery	True Value QC	RPD	Qualifier
Chloride	336	16.0	09/26/2017	ND	416	104	400	0.00	

TPH 8015M		mg/kg		Analyzed By: MS					
Analyte	Result	Reporting Limit	Analyzed	Method Blank	BS	% Recovery	True Value QC	RPD	Qualifier
GRO C6-C10	<10.0	10.0	09/25/2017	ND	191	95.6	200	0.722	
DRO >C10-C28	<10.0	10.0	09/25/2017	ND	207	104	200	0.377	
EXT DRO >C28-C36	<10.0	10.0	09/25/2017	ND					

Surrogate: 1-Chlorooctane 77.6 % 28.3-164

Surrogate: 1-Chlorooctadecane 81.3 % 34.7-157

Cardinal Laboratories

\*=Accredited Analyte

PLEASE NOTE: Liability and Damages. Cardinal's liability and client's exclusive remedy for any claim arising, whether based in contract or tort, shall be limited to the amount paid by client for analyses. All claims, including those for negligence and any other cause whatsoever shall be deemed waived unless made in writing and received by Cardinal within thirty (30) days after completion of the applicable service. In no event shall Cardinal be liable for incidental or consequential damages, including, without limitation, business interruptions, loss of use, or loss of profits incurred by client, its subsidiaries, affiliates or successors arising out of or related to the performance of the services hereunder by Cardinal, regardless of whether such claim is based upon any of the above stated reasons or otherwise. Results relate only to the samples identified above. This report shall not be reproduced except in full with written approval of Cardinal Laboratories.



Celey D. Keene, Lab Director/Quality Manager



**Analytical Results For:**

BBC International, Inc.  
Cliff Brunson  
P.O. Box 805  
Hobbs NM, 88241  
Fax To: (575) 397-0397

Received:	09/22/2017	Sampling Date:	09/18/2017
Reported:	09/29/2017	Sampling Type:	Soil
Project Name:	CEDAR CANYON 29 FED COM #3H	Sampling Condition:	Cool & Intact
Project Number:	NONE GIVEN	Sample Received By:	Tamara Oldaker
Project Location:	EDDY COUNTY		

**Sample ID: SP 1 @ 5 (H702583-04)**

Chloride, SM4500Cl-B		mg/kg		Analyzed By: AC						
Analyte	Result	Reporting Limit	Analyzed	Method Blank	BS	% Recovery	True Value QC	RPD	Qualifier	
Chloride	64.0	16.0	09/26/2017	ND	416	104	400	0.00		

**Sample ID: SP 1 @ 10 (H702583-05)**

Chloride, SM4500Cl-B		mg/kg		Analyzed By: AC						
Analyte	Result	Reporting Limit	Analyzed	Method Blank	BS	% Recovery	True Value QC	RPD	Qualifier	
Chloride	32.0	16.0	09/26/2017	ND	416	104	400	0.00		

Cardinal Laboratories

\*=Accredited Analyte

PLEASE NOTE: Liability and Damages. Cardinal's liability and client's exclusive remedy for any claim arising, whether based in contract or tort, shall be limited to the amount paid by client for analyses. All claims, including those for negligence and any other cause whatsoever shall be deemed waived unless made in writing and received by Cardinal within thirty (30) days after completion of the applicable service. In no event shall Cardinal be liable for incidental or consequential damages, including, without limitation, business interruptions, loss of use, or loss of profits incurred by client, its subsidiaries, affiliates or successors arising out of or related to the performance of the services hereunder by Cardinal, regardless of whether such claim is based upon any of the above stated reasons or otherwise. Results relate only to the samples identified above. This report shall not be reproduced except in full with written approval of Cardinal Laboratories.



Celey D. Keene, Lab Director/Quality Manager

**Analytical Results For:**

BBC International, Inc.  
Cliff Brunson  
P.O. Box 805  
Hobbs NM, 88241  
Fax To: (575) 397-0397

Received:	09/22/2017	Sampling Date:	09/18/2017
Reported:	09/29/2017	Sampling Type:	Soil
Project Name:	CEDAR CANYON 29 FED COM #3H	Sampling Condition:	Cool & Intact
Project Number:	NONE GIVEN	Sample Received By:	Tamara Oldaker
Project Location:	EDDY COUNTY		

**Sample ID: SP 1 @ 15 (H702583-06)**

BTEx 8021B		mg/kg		Analyzed By: MS					
Analyte	Result	Reporting Limit	Analyzed	Method Blank	BS	% Recovery	True Value QC	RPD	Qualifier
Benzene*	<0.050	0.050	09/27/2017	ND	2.18	109	2.00	2.29	
Toluene*	<0.050	0.050	09/27/2017	ND	1.96	98.0	2.00	2.86	
Ethylbenzene*	<0.050	0.050	09/27/2017	ND	1.98	98.9	2.00	3.52	
Total Xylenes*	<0.150	0.150	09/27/2017	ND	6.02	100	6.00	2.83	
Total BTEX	<0.300	0.300	09/27/2017	ND					

Surrogate: 4-Bromofluorobenzene (PID) 103 % 72-148

Chloride, SM4500Cl-B		mg/kg		Analyzed By: AC					
Analyte	Result	Reporting Limit	Analyzed	Method Blank	BS	% Recovery	True Value QC	RPD	Qualifier
Chloride	16.0	16.0	09/26/2017	ND	416	104	400	0.00	

TPH 8015M		mg/kg		Analyzed By: MS					
Analyte	Result	Reporting Limit	Analyzed	Method Blank	BS	% Recovery	True Value QC	RPD	Qualifier
GRO C6-C10	<10.0	10.0	09/25/2017	ND	191	95.6	200	0.722	
DRO >C10-C28	<10.0	10.0	09/25/2017	ND	207	104	200	0.377	
EXT DRO >C28-C36	<10.0	10.0	09/25/2017	ND					

Surrogate: 1-Chlorooctane 59.9 % 28.3-164

Surrogate: 1-Chlorooctadecane 64.2 % 34.7-157

Cardinal Laboratories

\*=Accredited Analyte

PLEASE NOTE: Liability and Damages. Cardinal's liability and client's exclusive remedy for any claim arising, whether based in contract or tort, shall be limited to the amount paid by client for analyses. All claims, including those for negligence and any other cause whatsoever shall be deemed waived unless made in writing and received by Cardinal within thirty (30) days after completion of the applicable service. In no event shall Cardinal be liable for incidental or consequential damages, including, without limitation, business interruptions, loss of use, or loss of profits incurred by client, its subsidiaries, affiliates or successors arising out of or related to the performance of the services hereunder by Cardinal, regardless of whether such claim is based upon any of the above stated reasons or otherwise. Results relate only to the samples identified above. This report shall not be reproduced except in full with written approval of Cardinal Laboratories.



Celey D. Keene, Lab Director/Quality Manager

**Analytical Results For:**

BBC International, Inc.  
Cliff Brunson  
P.O. Box 805  
Hobbs NM, 88241  
Fax To: (575) 397-0397

Received:	09/22/2017	Sampling Date:	09/18/2017
Reported:	09/29/2017	Sampling Type:	Soil
Project Name:	CEDAR CANYON 29 FED COM #3H	Sampling Condition:	Cool & Intact
Project Number:	NONE GIVEN	Sample Received By:	Tamara Oldaker
Project Location:	EDDY COUNTY		

**Sample ID: SP 2 @ 1 (H702583-07)**

BTEx 8021B		mg/kg		Analyzed By: MS					
Analyte	Result	Reporting Limit	Analyzed	Method Blank	BS	% Recovery	True Value QC	RPD	Qualifier
Benzene*	<0.050	0.050	09/27/2017	ND	2.18	109	2.00	2.29	
Toluene*	<0.050	0.050	09/27/2017	ND	1.96	98.0	2.00	2.86	
Ethylbenzene*	<0.050	0.050	09/27/2017	ND	1.98	98.9	2.00	3.52	
Total Xylenes*	<0.150	0.150	09/27/2017	ND	6.02	100	6.00	2.83	
Total BTEx	<0.300	0.300	09/27/2017	ND					

Surrogate: 4-Bromofluorobenzene (PID) 104 % 72-148

Chloride, SM4500Cl-B		mg/kg		Analyzed By: AC					
Analyte	Result	Reporting Limit	Analyzed	Method Blank	BS	% Recovery	True Value QC	RPD	Qualifier
Chloride	1600	16.0	09/26/2017	ND	416	104	400	0.00	

TPH 8015M		mg/kg		Analyzed By: MS					
Analyte	Result	Reporting Limit	Analyzed	Method Blank	BS	% Recovery	True Value QC	RPD	Qualifier
GRO C6-C10	<10.0	10.0	09/25/2017	ND	191	95.6	200	0.722	
DRO >C10-C28	<10.0	10.0	09/25/2017	ND	207	104	200	0.377	
EXT DRO >C28-C36	<10.0	10.0	09/25/2017	ND					

Surrogate: 1-Chlorooctane 71.2 % 28.3-164

Surrogate: 1-Chlorooctadecane 74.6 % 34.7-157

Cardinal Laboratories

\*=Accredited Analyte

PLEASE NOTE: Liability and Damages. Cardinal's liability and client's exclusive remedy for any claim arising, whether based in contract or tort, shall be limited to the amount paid by client for analyses. All claims, including those for negligence and any other cause whatsoever shall be deemed waived unless made in writing and received by Cardinal within thirty (30) days after completion of the applicable service. In no event shall Cardinal be liable for incidental or consequential damages, including, without limitation, business interruptions, loss of use, or loss of profits incurred by client, its subsidiaries, affiliates or successors arising out of or related to the performance of the services hereunder by Cardinal, regardless of whether such claim is based upon any of the above stated reasons or otherwise. Results relate only to the samples identified above. This report shall not be reproduced except in full with written approval of Cardinal Laboratories.



Celey D. Keene, Lab Director/Quality Manager

**Analytical Results For:**

BBC International, Inc.  
Cliff Brunson  
P.O. Box 805  
Hobbs NM, 88241  
Fax To: (575) 397-0397

Received:	09/22/2017	Sampling Date:	09/18/2017
Reported:	09/29/2017	Sampling Type:	Soil
Project Name:	CEDAR CANYON 29 FED COM #3H	Sampling Condition:	Cool & Intact
Project Number:	NONE GIVEN	Sample Received By:	Tamara Oldaker
Project Location:	EDDY COUNTY		

**Sample ID: SP 2 @ 3 (H702583-08)**

BTEx 8021B		mg/kg		Analyzed By: MS						
Analyte	Result	Reporting Limit	Analyzed	Method Blank	BS	% Recovery	True Value QC	RPD	Qualifier	
Benzene*	<0.050	0.050	09/27/2017	ND	2.18	109	2.00	2.29		
Toluene*	<0.050	0.050	09/27/2017	ND	1.96	98.0	2.00	2.86		
Ethylbenzene*	<0.050	0.050	09/27/2017	ND	1.98	98.9	2.00	3.52		
Total Xylenes*	<0.150	0.150	09/27/2017	ND	6.02	100	6.00	2.83		
Total BTEX	<0.300	0.300	09/27/2017	ND						

Surrogate: 4-Bromofluorobenzene (PID) 103 % 72-148

Chloride, SM4500Cl-B		mg/kg		Analyzed By: AC					
Analyte	Result	Reporting Limit	Analyzed	Method Blank	BS	% Recovery	True Value QC	RPD	Qualifier
Chloride	464	16.0	09/26/2017	ND	416	104	400	0.00	

TPH 8015M		mg/kg		Analyzed By: MS					
Analyte	Result	Reporting Limit	Analyzed	Method Blank	BS	% Recovery	True Value QC	RPD	Qualifier
GRO C6-C10	<10.0	10.0	09/25/2017	ND	191	95.6	200	0.722	
DRO >C10-C28	<10.0	10.0	09/25/2017	ND	207	104	200	0.377	
EXT DRO >C28-C36	<10.0	10.0	09/25/2017	ND					

Surrogate: 1-Chlorooctane 73.4 % 28.3-164

Surrogate: 1-Chlorooctadecane 78.5 % 34.7-157

Cardinal Laboratories

\*=Accredited Analyte

PLEASE NOTE: Liability and Damages. Cardinal's liability and client's exclusive remedy for any claim arising, whether based in contract or tort, shall be limited to the amount paid by client for analyses. All claims, including those for negligence and any other cause whatsoever shall be deemed waived unless made in writing and received by Cardinal within thirty (30) days after completion of the applicable service. In no event shall Cardinal be liable for incidental or consequential damages, including, without limitation, business interruptions, loss of use, or loss of profits incurred by client, its subsidiaries, affiliates or successors arising out of or related to the performance of the services hereunder by Cardinal, regardless of whether such claim is based upon any of the above stated reasons or otherwise. Results relate only to the samples identified above. This report shall not be reproduced except in full with written approval of Cardinal Laboratories.



Celey D. Keene, Lab Director/Quality Manager

**Analytical Results For:**

BBC International, Inc.  
Cliff Brunson  
P.O. Box 805  
Hobbs NM, 88241  
Fax To: (575) 397-0397

Received:	09/22/2017	Sampling Date:	09/18/2017
Reported:	09/29/2017	Sampling Type:	Soil
Project Name:	CEDAR CANYON 29 FED COM #3H	Sampling Condition:	Cool & Intact
Project Number:	NONE GIVEN	Sample Received By:	Tamara Oldaker
Project Location:	EDDY COUNTY		

**Sample ID: SP 2 @ 4 (H702583-09)**

BTEX 8021B		mg/kg		Analyzed By: MS						
Analyte	Result	Reporting Limit	Analyzed	Method Blank	BS	% Recovery	True Value QC	RPD	Qualifier	
Benzene*	<0.050	0.050	09/27/2017	ND	2.18	109	2.00	2.29		
Toluene*	<0.050	0.050	09/27/2017	ND	1.96	98.0	2.00	2.86		
Ethylbenzene*	<0.050	0.050	09/27/2017	ND	1.98	98.9	2.00	3.52		
Total Xylenes*	<0.150	0.150	09/27/2017	ND	6.02	100	6.00	2.83		
Total BTEX	<0.300	0.300	09/27/2017	ND						

Surrogate: 4-Bromofluorobenzene (PID) 103 % 72-148

Chloride, SM4500Cl-B		mg/kg		Analyzed By: AC					
Analyte	Result	Reporting Limit	Analyzed	Method Blank	BS	% Recovery	True Value QC	RPD	Qualifier
Chloride	320	16.0	09/26/2017	ND	416	104	400	0.00	

TPH 8015M		mg/kg		Analyzed By: MS					
Analyte	Result	Reporting Limit	Analyzed	Method Blank	BS	% Recovery	True Value QC	RPD	Qualifier
GRO C6-C10	<10.0	10.0	09/25/2017	ND	191	95.6	200	0.722	
DRO >C10-C28	<10.0	10.0	09/25/2017	ND	207	104	200	0.377	
EXT DRO >C28-C36	<10.0	10.0	09/25/2017	ND					

Surrogate: 1-Chlorooctane 69.9 % 28.3-164

Surrogate: 1-Chlorooctadecane 69.2 % 34.7-157

Cardinal Laboratories

\*=Accredited Analyte

PLEASE NOTE: Liability and Damages. Cardinal's liability and client's exclusive remedy for any claim arising, whether based in contract or tort, shall be limited to the amount paid by client for analyses. All claims, including those for negligence and any other cause whatsoever shall be deemed waived unless made in writing and received by Cardinal within thirty (30) days after completion of the applicable service. In no event shall Cardinal be liable for incidental or consequential damages, including, without limitation, business interruptions, loss of use, or loss of profits incurred by client, its subsidiaries, affiliates or successors arising out of or related to the performance of the services hereunder by Cardinal, regardless of whether such claim is based upon any of the above stated reasons or otherwise. Results relate only to the samples identified above. This report shall not be reproduced except in full with written approval of Cardinal Laboratories.



Celey D. Keene, Lab Director/Quality Manager

**Analytical Results For:**

BBC International, Inc.  
Cliff Brunson  
P.O. Box 805  
Hobbs NM, 88241  
Fax To: (575) 397-0397

Received:	09/22/2017	Sampling Date:	09/18/2017
Reported:	09/29/2017	Sampling Type:	Soil
Project Name:	CEDAR CANYON 29 FED COM #3H	Sampling Condition:	Cool & Intact
Project Number:	NONE GIVEN	Sample Received By:	Tamara Oldaker
Project Location:	EDDY COUNTY		

**Sample ID: SP 2 @ 5 (H702583-10)**

Chloride, SM4500Cl-B		mg/kg		Analyzed By: AC						
Analyte	Result	Reporting Limit	Analyzed	Method Blank	BS	% Recovery	True Value QC	RPD	Qualifier	
Chloride	32.0	16.0	09/26/2017	ND	416	104	400	0.00		

**Sample ID: SP 2 @ 10 (H702583-11)**

Chloride, SM4500Cl-B		mg/kg		Analyzed By: AC					
Analyte	Result	Reporting Limit	Analyzed	Method Blank	BS	% Recovery	True Value QC	RPD	Qualifier
Chloride	16.0	16.0	09/26/2017	ND	416	104	400	0.00	

Cardinal Laboratories

\*=Accredited Analyte

PLEASE NOTE: Liability and Damages. Cardinal's liability and client's exclusive remedy for any claim arising, whether based in contract or tort, shall be limited to the amount paid by client for analyses. All claims, including those for negligence and any other cause whatsoever shall be deemed waived unless made in writing and received by Cardinal within thirty (30) days after completion of the applicable service. In no event shall Cardinal be liable for incidental or consequential damages, including, without limitation, business interruptions, loss of use, or loss of profits incurred by client, its subsidiaries, affiliates or successors arising out of or related to the performance of the services hereunder by Cardinal, regardless of whether such claim is based upon any of the above stated reasons or otherwise. Results relate only to the samples identified above. This report shall not be reproduced except in full with written approval of Cardinal Laboratories.



Celey D. Keene, Lab Director/Quality Manager



**Analytical Results For:**

BBC International, Inc.  
Cliff Brunson  
P.O. Box 805  
Hobbs NM, 88241  
Fax To: (575) 397-0397

Received:	09/22/2017	Sampling Date:	09/18/2017
Reported:	09/29/2017	Sampling Type:	Soil
Project Name:	CEDAR CANYON 29 FED COM #3H	Sampling Condition:	Cool & Intact
Project Number:	NONE GIVEN	Sample Received By:	Tamara Oldaker
Project Location:	EDDY COUNTY		

**Sample ID: SP 2 @ 15 (H702583-12)**

BTEx 8021B		mg/kg		Analyzed By: MS					
Analyte	Result	Reporting Limit	Analyzed	Method Blank	BS	% Recovery	True Value QC	RPD	Qualifier
Benzene*	<0.050	0.050	09/27/2017	ND	2.18	109	2.00	2.29	
Toluene*	<0.050	0.050	09/27/2017	ND	1.96	98.0	2.00	2.86	
Ethylbenzene*	<0.050	0.050	09/27/2017	ND	1.98	98.9	2.00	3.52	
Total Xylenes*	<0.150	0.150	09/27/2017	ND	6.02	100	6.00	2.83	
Total BTEX	<0.300	0.300	09/27/2017	ND					

Surrogate: 4-Bromofluorobenzene (PID) 102 % 72-148

Chloride, SM4500Cl-B		mg/kg		Analyzed By: AC					
Analyte	Result	Reporting Limit	Analyzed	Method Blank	BS	% Recovery	True Value QC	RPD	Qualifier
Chloride	16.0	16.0	09/26/2017	ND	416	104	400	0.00	

TPH 8015M		mg/kg		Analyzed By: MS					
Analyte	Result	Reporting Limit	Analyzed	Method Blank	BS	% Recovery	True Value QC	RPD	Qualifier
GRO C6-C10	<10.0	10.0	09/25/2017	ND	191	95.6	200	0.722	
DRO >C10-C28	<10.0	10.0	09/25/2017	ND	207	104	200	0.377	
EXT DRO >C28-C36	<10.0	10.0	09/25/2017	ND					

Surrogate: 1-Chlorooctane 79.1 % 28.3-164

Surrogate: 1-Chlorooctadecane 75.3 % 34.7-157

Cardinal Laboratories

\*=Accredited Analyte

PLEASE NOTE: Liability and Damages. Cardinal's liability and client's exclusive remedy for any claim arising, whether based in contract or tort, shall be limited to the amount paid by client for analyses. All claims, including those for negligence and any other cause whatsoever shall be deemed waived unless made in writing and received by Cardinal within thirty (30) days after completion of the applicable service. In no event shall Cardinal be liable for incidental or consequential damages, including, without limitation, business interruptions, loss of use, or loss of profits incurred by client, its subsidiaries, affiliates or successors arising out of or related to the performance of the services hereunder by Cardinal, regardless of whether such claim is based upon any of the above stated reasons or otherwise. Results relate only to the samples identified above. This report shall not be reproduced except in full with written approval of Cardinal Laboratories.



Celey D. Keene, Lab Director/Quality Manager

**Analytical Results For:**

BBC International, Inc.  
Cliff Brunson  
P.O. Box 805  
Hobbs NM, 88241  
Fax To: (575) 397-0397

Received:	09/22/2017	Sampling Date:	09/18/2017
Reported:	09/29/2017	Sampling Type:	Soil
Project Name:	CEDAR CANYON 29 FED COM #3H	Sampling Condition:	Cool & Intact
Project Number:	NONE GIVEN	Sample Received By:	Tamara Oldaker
Project Location:	EDDY COUNTY		

**Sample ID: SP 3 @ 1 (H702583-13)**

BTX 8021B		mg/kg		Analyzed By: MS						
Analyte	Result	Reporting Limit	Analyzed	Method Blank	BS	% Recovery	True Value QC	RPD	Qualifier	
Benzene*	<0.050	0.050	09/27/2017	ND	2.18	109	2.00	2.29		
Toluene*	<0.050	0.050	09/27/2017	ND	1.96	98.0	2.00	2.86		
Ethylbenzene*	<0.050	0.050	09/27/2017	ND	1.98	98.9	2.00	3.52		
Total Xylenes*	<0.150	0.150	09/27/2017	ND	6.02	100	6.00	2.83		
Total BTX	<0.300	0.300	09/27/2017	ND						

Surrogate: 4-Bromofluorobenzene (PID) 102 % 72-148

Chloride, SM4500Cl-B		mg/kg		Analyzed By: AC						
Analyte	Result	Reporting Limit	Analyzed	Method Blank	BS	% Recovery	True Value QC	RPD	Qualifier	
Chloride	1620	16.0	09/26/2017	ND	416	104	400	0.00		

TPH 8015M		mg/kg		Analyzed By: MS					
Analyte	Result	Reporting Limit	Analyzed	Method Blank	BS	% Recovery	True Value QC	RPD	Qualifier
GRO C6-C10	<10.0	10.0	09/25/2017	ND	191	95.6	200	0.722	
DRO >C10-C28	<10.0	10.0	09/25/2017	ND	207	104	200	0.377	
EXT DRO >C28-C36	<10.0	10.0	09/25/2017	ND					

Surrogate: 1-Chlorooctane 77.9 % 28.3-164

Surrogate: 1-Chlorooctadecane 82.9 % 34.7-157

Cardinal Laboratories

\*=Accredited Analyte

PLEASE NOTE: Liability and Damages. Cardinal's liability and client's exclusive remedy for any claim arising, whether based in contract or tort, shall be limited to the amount paid by client for analyses. All claims, including those for negligence and any other cause whatsoever shall be deemed waived unless made in writing and received by Cardinal within thirty (30) days after completion of the applicable service. In no event shall Cardinal be liable for incidental or consequential damages, including, without limitation, business interruptions, loss of use, or loss of profits incurred by client, its subsidiaries, affiliates or successors arising out of or related to the performance of the services hereunder by Cardinal, regardless of whether such claim is based upon any of the above stated reasons or otherwise. Results relate only to the samples identified above. This report shall not be reproduced except in full with written approval of Cardinal Laboratories.



Celey D. Keene, Lab Director/Quality Manager

**Analytical Results For:**

BBC International, Inc.  
Cliff Brunson  
P.O. Box 805  
Hobbs NM, 88241  
Fax To: (575) 397-0397

Received:	09/22/2017	Sampling Date:	09/18/2017
Reported:	09/29/2017	Sampling Type:	Soil
Project Name:	CEDAR CANYON 29 FED COM #3H	Sampling Condition:	Cool & Intact
Project Number:	NONE GIVEN	Sample Received By:	Tamara Oldaker
Project Location:	EDDY COUNTY		

**Sample ID: SP 3 @ 3 (H702583-14)**

BTX 8021B		mg/kg		Analyzed By: MS						
Analyte	Result	Reporting Limit	Analyzed	Method Blank	BS	% Recovery	True Value QC	RPD	Qualifier	
Benzene*	<0.050	0.050	09/27/2017	ND	2.18	109	2.00	2.29		
Toluene*	<0.050	0.050	09/27/2017	ND	1.96	98.0	2.00	2.86		
Ethylbenzene*	<0.050	0.050	09/27/2017	ND	1.98	98.9	2.00	3.52		
Total Xylenes*	<0.150	0.150	09/27/2017	ND	6.02	100	6.00	2.83		
Total BTX	<0.300	0.300	09/27/2017	ND						

Surrogate: 4-Bromofluorobenzene (PID) 102 % 72-148

Chloride, SM4500Cl-B		mg/kg		Analyzed By: AC						
Analyte	Result	Reporting Limit	Analyzed	Method Blank	BS	% Recovery	True Value QC	RPD	Qualifier	
Chloride	512	16.0	09/26/2017	ND	416	104	400	0.00		

TPH 8015M		mg/kg		Analyzed By: MS					
Analyte	Result	Reporting Limit	Analyzed	Method Blank	BS	% Recovery	True Value QC	RPD	Qualifier
GRO C6-C10	<10.0	10.0	09/24/2017	ND	189	94.7	200	2.55	
DRO >C10-C28	<10.0	10.0	09/24/2017	ND	196	97.8	200	0.898	
EXT DRO >C28-C36	<10.0	10.0	09/24/2017	ND					

Surrogate: 1-Chlorooctane 68.8 % 28.3-164

Surrogate: 1-Chlorooctadecane 76.7 % 34.7-157

Cardinal Laboratories

\*=Accredited Analyte

PLEASE NOTE: Liability and Damages. Cardinal's liability and client's exclusive remedy for any claim arising, whether based in contract or tort, shall be limited to the amount paid by client for analyses. All claims, including those for negligence and any other cause whatsoever shall be deemed waived unless made in writing and received by Cardinal within thirty (30) days after completion of the applicable service. In no event shall Cardinal be liable for incidental or consequential damages, including, without limitation, business interruptions, loss of use, or loss of profits incurred by client, its subsidiaries, affiliates or successors arising out of or related to the performance of the services hereunder by Cardinal, regardless of whether such claim is based upon any of the above stated reasons or otherwise. Results relate only to the samples identified above. This report shall not be reproduced except in full with written approval of Cardinal Laboratories.



Celey D. Keene, Lab Director/Quality Manager

**Analytical Results For:**

BBC International, Inc.  
Cliff Brunson  
P.O. Box 805  
Hobbs NM, 88241  
Fax To: (575) 397-0397

Received:	09/22/2017	Sampling Date:	09/18/2017
Reported:	09/29/2017	Sampling Type:	Soil
Project Name:	CEDAR CANYON 29 FED COM #3H	Sampling Condition:	Cool & Intact
Project Number:	NONE GIVEN	Sample Received By:	Tamara Oldaker
Project Location:	EDDY COUNTY		

**Sample ID: SP 3 @ 4 (H702583-15)**

BTEX 8021B		mg/kg		Analyzed By: MS						
Analyte	Result	Reporting Limit	Analyzed	Method Blank	BS	% Recovery	True Value QC	RPD	Qualifier	
Benzene*	<0.050	0.050	09/27/2017	ND	2.18	109	2.00	2.29		
Toluene*	<0.050	0.050	09/27/2017	ND	1.96	98.0	2.00	2.86		
Ethylbenzene*	<0.050	0.050	09/27/2017	ND	1.98	98.9	2.00	3.52		
Total Xylenes*	<0.150	0.150	09/27/2017	ND	6.02	100	6.00	2.83		
Total BTEX	<0.300	0.300	09/27/2017	ND						

Surrogate: 4-Bromofluorobenzene (PID) 105 % 72-148

Chloride, SM4500Cl-B		mg/kg		Analyzed By: AC						
Analyte	Result	Reporting Limit	Analyzed	Method Blank	BS	% Recovery	True Value QC	RPD	Qualifier	
Chloride	304	16.0	09/26/2017	ND	416	104	400	0.00		

TPH 8015M		mg/kg		Analyzed By: MS					
Analyte	Result	Reporting Limit	Analyzed	Method Blank	BS	% Recovery	True Value QC	RPD	Qualifier
GRO C6-C10	<10.0	10.0	09/24/2017	ND	189	94.7	200	2.55	
DRO >C10-C28	<10.0	10.0	09/24/2017	ND	196	97.8	200	0.898	
EXT DRO >C28-C36	<10.0	10.0	09/24/2017	ND					

Surrogate: 1-Chlorooctane 65.7 % 28.3-164

Surrogate: 1-Chlorooctadecane 71.0 % 34.7-157

Cardinal Laboratories

\*=Accredited Analyte

PLEASE NOTE: Liability and Damages. Cardinal's liability and client's exclusive remedy for any claim arising, whether based in contract or tort, shall be limited to the amount paid by client for analyses. All claims, including those for negligence and any other cause whatsoever shall be deemed waived unless made in writing and received by Cardinal within thirty (30) days after completion of the applicable service. In no event shall Cardinal be liable for incidental or consequential damages, including, without limitation, business interruptions, loss of use, or loss of profits incurred by client, its subsidiaries, affiliates or successors arising out of or related to the performance of the services hereunder by Cardinal, regardless of whether such claim is based upon any of the above stated reasons or otherwise. Results relate only to the samples identified above. This report shall not be reproduced except in full with written approval of Cardinal Laboratories.



Celey D. Keene, Lab Director/Quality Manager

**Analytical Results For:**

BBC International, Inc.  
Cliff Brunson  
P.O. Box 805  
Hobbs NM, 88241  
Fax To: (575) 397-0397

Received:	09/22/2017	Sampling Date:	09/18/2017
Reported:	09/29/2017	Sampling Type:	Soil
Project Name:	CEDAR CANYON 29 FED COM #3H	Sampling Condition:	Cool & Intact
Project Number:	NONE GIVEN	Sample Received By:	Tamara Oldaker
Project Location:	EDDY COUNTY		

**Sample ID: SP 3 @ 5 (H702583-16)**

Chloride, SM4500Cl-B		mg/kg		Analyzed By: AC					
Analyte	Result	Reporting Limit	Analyzed	Method Blank	BS	% Recovery	True Value QC	RPD	Qualifier
Chloride	16.0	16.0	09/26/2017	ND	416	104	400	0.00	

**Sample ID: SP 3 @ 10 (H702583-17)**

Chloride, SM4500Cl-B		mg/kg		Analyzed By: AC					
Analyte	Result	Reporting Limit	Analyzed	Method Blank	BS	% Recovery	True Value QC	RPD	Qualifier
Chloride	16.0	16.0	09/26/2017	ND	416	104	400	0.00	

Cardinal Laboratories

\*=Accredited Analyte

PLEASE NOTE: Liability and Damages. Cardinal's liability and client's exclusive remedy for any claim arising, whether based in contract or tort, shall be limited to the amount paid by client for analyses. All claims, including those for negligence and any other cause whatsoever shall be deemed waived unless made in writing and received by Cardinal within thirty (30) days after completion of the applicable service. In no event shall Cardinal be liable for incidental or consequential damages, including, without limitation, business interruptions, loss of use, or loss of profits incurred by client, its subsidiaries, affiliates or successors arising out of or related to the performance of the services hereunder by Cardinal, regardless of whether such claim is based upon any of the above stated reasons or otherwise. Results relate only to the samples identified above. This report shall not be reproduced except in full with written approval of Cardinal Laboratories.



Celey D. Keene, Lab Director/Quality Manager

**Analytical Results For:**

BBC International, Inc.  
Cliff Brunson  
P.O. Box 805  
Hobbs NM, 88241  
Fax To: (575) 397-0397

Received:	09/22/2017	Sampling Date:	09/18/2017
Reported:	09/29/2017	Sampling Type:	Soil
Project Name:	CEDAR CANYON 29 FED COM #3H	Sampling Condition:	Cool & Intact
Project Number:	NONE GIVEN	Sample Received By:	Tamara Oldaker
Project Location:	EDDY COUNTY		

**Sample ID: SP 3 @ 15 (H702583-18)**

BTX 8021B		mg/kg		Analyzed By: MS					
Analyte	Result	Reporting Limit	Analyzed	Method Blank	BS	% Recovery	True Value QC	RPD	Qualifier
Benzene*	<0.050	0.050	09/27/2017	ND	2.18	109	2.00	2.29	
Toluene*	<0.050	0.050	09/27/2017	ND	1.96	98.0	2.00	2.86	
Ethylbenzene*	<0.050	0.050	09/27/2017	ND	1.98	98.9	2.00	3.52	
Total Xylenes*	<0.150	0.150	09/27/2017	ND	6.02	100	6.00	2.83	
Total BTX	<0.300	0.300	09/27/2017	ND					

Surrogate: 4-Bromofluorobenzene (PID) 103 % 72-148

Chloride, SM4500Cl-B		mg/kg		Analyzed By: AC					
Analyte	Result	Reporting Limit	Analyzed	Method Blank	BS	% Recovery	True Value QC	RPD	Qualifier
Chloride	32.0	16.0	09/26/2017	ND	416	104	400	0.00	

TPH 8015M		mg/kg		Analyzed By: MS					
Analyte	Result	Reporting Limit	Analyzed	Method Blank	BS	% Recovery	True Value QC	RPD	Qualifier
GRO C6-C10	<10.0	10.0	09/24/2017	ND	189	94.7	200	2.55	
DRO >C10-C28	<10.0	10.0	09/24/2017	ND	196	97.8	200	0.898	
EXT DRO >C28-C36	<10.0	10.0	09/24/2017	ND					

Surrogate: 1-Chlorooctane 62.5 % 28.3-164

Surrogate: 1-Chlorooctadecane 68.9 % 34.7-157

Cardinal Laboratories

\*=Accredited Analyte

PLEASE NOTE: Liability and Damages. Cardinal's liability and client's exclusive remedy for any claim arising, whether based in contract or tort, shall be limited to the amount paid by client for analyses. All claims, including those for negligence and any other cause whatsoever shall be deemed waived unless made in writing and received by Cardinal within thirty (30) days after completion of the applicable service. In no event shall Cardinal be liable for incidental or consequential damages, including, without limitation, business interruptions, loss of use, or loss of profits incurred by client, its subsidiaries, affiliates or successors arising out of or related to the performance of the services hereunder by Cardinal, regardless of whether such claim is based upon any of the above stated reasons or otherwise. Results relate only to the samples identified above. This report shall not be reproduced except in full with written approval of Cardinal Laboratories.



Celey D. Keene, Lab Director/Quality Manager



**Analytical Results For:**

BBC International, Inc.  
Cliff Brunson  
P.O. Box 805  
Hobbs NM, 88241  
Fax To: (575) 397-0397

Received:	09/22/2017	Sampling Date:	09/19/2017
Reported:	09/29/2017	Sampling Type:	Soil
Project Name:	CEDAR CANYON 29 FED COM #3H	Sampling Condition:	Cool & Intact
Project Number:	NONE GIVEN	Sample Received By:	Tamara Oldaker
Project Location:	EDDY COUNTY		

**Sample ID: SP 4 @ 1 (H702583-19)**

BTEx 8021B		mg/kg		Analyzed By: MS						
Analyte	Result	Reporting Limit	Analyzed	Method Blank	BS	% Recovery	True Value QC	RPD	Qualifier	
Benzene*	<0.050	0.050	09/27/2017	ND	2.18	109	2.00	2.29		
Toluene*	<0.050	0.050	09/27/2017	ND	1.96	98.0	2.00	2.86		
Ethylbenzene*	<0.050	0.050	09/27/2017	ND	1.98	98.9	2.00	3.52		
Total Xylenes*	0.427	0.150	09/27/2017	ND	6.02	100	6.00	2.83		
Total BTEx	0.427	0.300	09/27/2017	ND						

Surrogate: 4-Bromofluorobenzene (PID) 138 % 72-148

Chloride, SM4500CI-B		mg/kg		Analyzed By: AC						
Analyte	Result	Reporting Limit	Analyzed	Method Blank	BS	% Recovery	True Value QC	RPD	Qualifier	
Chloride	2320	16.0	09/26/2017	ND	416	104	400	0.00		

TPH 8015M		mg/kg		Analyzed By: MS					
Analyte	Result	Reporting Limit	Analyzed	Method Blank	BS	% Recovery	True Value QC	RPD	Qualifier
GRO C6-C10	67.0	10.0	09/24/2017	ND	189	94.7	200	2.55	
DRO >C10-C28	3280	10.0	09/24/2017	ND	196	97.8	200	0.898	
EXT DRO >C28-C36	578	10.0	09/24/2017	ND					

Surrogate: 1-Chlorooctane 88.2 % 28.3-164

Surrogate: 1-Chlorooctadecane 119 % 34.7-157

Cardinal Laboratories

\*=Accredited Analyte

PLEASE NOTE: Liability and Damages. Cardinal's liability and client's exclusive remedy for any claim arising, whether based in contract or tort, shall be limited to the amount paid by client for analyses. All claims, including those for negligence and any other cause whatsoever shall be deemed waived unless made in writing and received by Cardinal within thirty (30) days after completion of the applicable service. In no event shall Cardinal be liable for incidental or consequential damages, including, without limitation, business interruptions, loss of use, or loss of profits incurred by client, its subsidiaries, affiliates or successors arising out of or related to the performance of the services hereunder by Cardinal, regardless of whether such claim is based upon any of the above stated reasons or otherwise. Results relate only to the samples identified above. This report shall not be reproduced except in full with written approval of Cardinal Laboratories.



Celey D. Keene, Lab Director/Quality Manager

**Analytical Results For:**

BBC International, Inc.  
Cliff Brunson  
P.O. Box 805  
Hobbs NM, 88241  
Fax To: (575) 397-0397

Received:	09/22/2017	Sampling Date:	09/19/2017
Reported:	09/29/2017	Sampling Type:	Soil
Project Name:	CEDAR CANYON 29 FED COM #3H	Sampling Condition:	Cool & Intact
Project Number:	NONE GIVEN	Sample Received By:	Tamara Oldaker
Project Location:	EDDY COUNTY		

**Sample ID: SP 4 @ 2 (H702583-20)**

BTX 8021B		mg/kg		Analyzed By: MS						
Analyte	Result	Reporting Limit	Analyzed	Method Blank	BS	% Recovery	True Value QC	RPD	Qualifier	
Benzene*	<0.050	0.050	09/27/2017	ND	2.18	109	2.00	2.29		
Toluene*	<0.050	0.050	09/27/2017	ND	1.96	98.0	2.00	2.86		
Ethylbenzene*	<0.050	0.050	09/27/2017	ND	1.98	98.9	2.00	3.52		
Total Xylenes*	<0.150	0.150	09/27/2017	ND	6.02	100	6.00	2.83		
Total BTX	<0.300	0.300	09/27/2017	ND						

Surrogate: 4-Bromofluorobenzene (PID) 134 % 72-148

Chloride, SM4500CI-B		mg/kg		Analyzed By: AC					
Analyte	Result	Reporting Limit	Analyzed	Method Blank	BS	% Recovery	True Value QC	RPD	Qualifier
Chloride	3320	16.0	09/26/2017	ND	416	104	400	0.00	

TPH 8015M		mg/kg		Analyzed By: MS					
Analyte	Result	Reporting Limit	Analyzed	Method Blank	BS	% Recovery	True Value QC	RPD	Qualifier
GRO C6-C10	10.5	10.0	09/24/2017	ND	189	94.7	200	2.55	
DRO >C10-C28	1600	10.0	09/24/2017	ND	196	97.8	200	0.898	
EXT DRO >C28-C36	355	10.0	09/24/2017	ND					

Surrogate: 1-Chlorooctane 70.8 % 28.3-164

Surrogate: 1-Chlorooctadecane 95.4 % 34.7-157

Cardinal Laboratories

\*=Accredited Analyte

PLEASE NOTE: Liability and Damages. Cardinal's liability and client's exclusive remedy for any claim arising, whether based in contract or tort, shall be limited to the amount paid by client for analyses. All claims, including those for negligence and any other cause whatsoever shall be deemed waived unless made in writing and received by Cardinal within thirty (30) days after completion of the applicable service. In no event shall Cardinal be liable for incidental or consequential damages, including, without limitation, business interruptions, loss of use, or loss of profits incurred by client, its subsidiaries, affiliates or successors arising out of or related to the performance of the services hereunder by Cardinal, regardless of whether such claim is based upon any of the above stated reasons or otherwise. Results relate only to the samples identified above. This report shall not be reproduced except in full with written approval of Cardinal Laboratories.



Celey D. Keene, Lab Director/Quality Manager

**Analytical Results For:**

BBC International, Inc.  
Cliff Brunson  
P.O. Box 805  
Hobbs NM, 88241  
Fax To: (575) 397-0397

Received:	09/22/2017	Sampling Date:	09/19/2017
Reported:	09/29/2017	Sampling Type:	Soil
Project Name:	CEDAR CANYON 29 FED COM #3H	Sampling Condition:	Cool & Intact
Project Number:	NONE GIVEN	Sample Received By:	Tamara Oldaker
Project Location:	EDDY COUNTY		

**Sample ID: SP 4 @ 4 (H702583-21)**

BTX 8021B		mg/kg		Analyzed By: MS						
Analyte	Result	Reporting Limit	Analyzed	Method Blank	BS	% Recovery	True Value QC	RPD	Qualifier	
Benzene*	<0.050	0.050	09/27/2017	ND	2.18	109	2.00	2.29		
Toluene*	<0.050	0.050	09/27/2017	ND	1.96	98.0	2.00	2.86		
Ethylbenzene*	<0.050	0.050	09/27/2017	ND	1.98	98.9	2.00	3.52		
Total Xylenes*	<0.150	0.150	09/27/2017	ND	6.02	100	6.00	2.83		
Total BTX	<0.300	0.300	09/27/2017	ND						

Surrogate: 4-Bromofluorobenzene (PID) 117 % 72-148

Chloride, SM4500CI-B		mg/kg		Analyzed By: AC					
Analyte	Result	Reporting Limit	Analyzed	Method Blank	BS	% Recovery	True Value QC	RPD	Qualifier
Chloride	4880	16.0	09/26/2017	ND	416	104	400	0.00	

TPH 8015M		mg/kg		Analyzed By: MS					
Analyte	Result	Reporting Limit	Analyzed	Method Blank	BS	% Recovery	True Value QC	RPD	Qualifier
GRO C6-C10	<10.0	10.0	09/24/2017	ND	189	94.7	200	2.55	
DRO >C10-C28	73.0	10.0	09/24/2017	ND	196	97.8	200	0.898	
EXT DRO >C28-C36	40.9	10.0	09/24/2017	ND					

Surrogate: 1-Chlorooctane 72.8 % 28.3-164

Surrogate: 1-Chlorooctadecane 78.7 % 34.7-157

Cardinal Laboratories

\*=Accredited Analyte

PLEASE NOTE: Liability and Damages. Cardinal's liability and client's exclusive remedy for any claim arising, whether based in contract or tort, shall be limited to the amount paid by client for analyses. All claims, including those for negligence and any other cause whatsoever shall be deemed waived unless made in writing and received by Cardinal within thirty (30) days after completion of the applicable service. In no event shall Cardinal be liable for incidental or consequential damages, including, without limitation, business interruptions, loss of use, or loss of profits incurred by client, its subsidiaries, affiliates or successors arising out of or related to the performance of the services hereunder by Cardinal, regardless of whether such claim is based upon any of the above stated reasons or otherwise. Results relate only to the samples identified above. This report shall not be reproduced except in full with written approval of Cardinal Laboratories.



Celey D. Keene, Lab Director/Quality Manager

**Analytical Results For:**

BBC International, Inc.  
Cliff Brunson  
P.O. Box 805  
Hobbs NM, 88241  
Fax To: (575) 397-0397

Received:	09/22/2017	Sampling Date:	09/19/2017
Reported:	09/29/2017	Sampling Type:	Soil
Project Name:	CEDAR CANYON 29 FED COM #3H	Sampling Condition:	Cool & Intact
Project Number:	NONE GIVEN	Sample Received By:	Tamara Oldaker
Project Location:	EDDY COUNTY		

**Sample ID: SP 4 @ 6 (H702583-22)**

Chloride, SM4500Cl-B		mg/kg		Analyzed By: AC						
Analyte	Result	Reporting Limit	Analyzed	Method Blank	BS	% Recovery	True Value QC	RPD	Qualifier	
Chloride	2720	16.0	09/26/2017	ND	432	108	400	3.77	QM-07	

Cardinal Laboratories

\*=Accredited Analyte

PLEASE NOTE: Liability and Damages. Cardinal's liability and client's exclusive remedy for any claim arising, whether based in contract or tort, shall be limited to the amount paid by client for analyses. All claims, including those for negligence and any other cause whatsoever shall be deemed waived unless made in writing and received by Cardinal within thirty (30) days after completion of the applicable service. In no event shall Cardinal be liable for incidental or consequential damages, including, without limitation, business interruptions, loss of use, or loss of profits incurred by client, its subsidiaries, affiliates or successors arising out of or related to the performance of the services hereunder by Cardinal, regardless of whether such claim is based upon any of the above stated reasons or otherwise. Results relate only to the samples identified above. This report shall not be reproduced except in full with written approval of Cardinal Laboratories.



Celey D. Keene, Lab Director/Quality Manager

**Analytical Results For:**

BBC International, Inc.  
Cliff Brunson  
P.O. Box 805  
Hobbs NM, 88241  
Fax To: (575) 397-0397

Received:	09/22/2017	Sampling Date:	09/19/2017
Reported:	09/29/2017	Sampling Type:	Soil
Project Name:	CEDAR CANYON 29 FED COM #3H	Sampling Condition:	Cool & Intact
Project Number:	NONE GIVEN	Sample Received By:	Tamara Oldaker
Project Location:	EDDY COUNTY		

**Sample ID: SP 4 @ 8 (H702583-23)**

BTX 8021B		mg/kg		Analyzed By: MS						
Analyte	Result	Reporting Limit	Analyzed	Method Blank	BS	% Recovery	True Value QC	RPD	Qualifier	
Benzene*	<0.050	0.050	09/27/2017	ND	2.18	109	2.00	2.29		
Toluene*	<0.050	0.050	09/27/2017	ND	1.96	98.0	2.00	2.86		
Ethylbenzene*	<0.050	0.050	09/27/2017	ND	1.98	98.9	2.00	3.52		
Total Xylenes*	<0.150	0.150	09/27/2017	ND	6.02	100	6.00	2.83		
Total BTX	<0.300	0.300	09/27/2017	ND						

Surrogate: 4-Bromofluorobenzene (PID) 109 % 72-148

Chloride, SM4500CI-B		mg/kg		Analyzed By: AC					
Analyte	Result	Reporting Limit	Analyzed	Method Blank	BS	% Recovery	True Value QC	RPD	Qualifier
Chloride	816	16.0	09/26/2017	ND	432	108	400	3.77	

TPH 8015M		mg/kg		Analyzed By: MS					
Analyte	Result	Reporting Limit	Analyzed	Method Blank	BS	% Recovery	True Value QC	RPD	Qualifier
GRO C6-C10	<10.0	10.0	09/24/2017	ND	189	94.7	200	2.55	
DRO >C10-C28	<10.0	10.0	09/24/2017	ND	196	97.8	200	0.898	
EXT DRO >C28-C36	<10.0	10.0	09/24/2017	ND					

Surrogate: 1-Chlorooctane 73.7 % 28.3-164

Surrogate: 1-Chlorooctadecane 79.1 % 34.7-157

Cardinal Laboratories

\*=Accredited Analyte

PLEASE NOTE: Liability and Damages. Cardinal's liability and client's exclusive remedy for any claim arising, whether based in contract or tort, shall be limited to the amount paid by client for analyses. All claims, including those for negligence and any other cause whatsoever shall be deemed waived unless made in writing and received by Cardinal within thirty (30) days after completion of the applicable service. In no event shall Cardinal be liable for incidental or consequential damages, including, without limitation, business interruptions, loss of use, or loss of profits incurred by client, its subsidiaries, affiliates or successors arising out of or related to the performance of the services hereunder by Cardinal, regardless of whether such claim is based upon any of the above stated reasons or otherwise. Results relate only to the samples identified above. This report shall not be reproduced except in full with written approval of Cardinal Laboratories.



Celey D. Keene, Lab Director/Quality Manager

**Analytical Results For:**

BBC International, Inc.  
Cliff Brunson  
P.O. Box 805  
Hobbs NM, 88241  
Fax To: (575) 397-0397

Received:	09/22/2017	Sampling Date:	09/19/2017
Reported:	09/29/2017	Sampling Type:	Soil
Project Name:	CEDAR CANYON 29 FED COM #3H	Sampling Condition:	Cool & Intact
Project Number:	NONE GIVEN	Sample Received By:	Tamara Oldaker
Project Location:	EDDY COUNTY		

**Sample ID: SP 4 @ 11 (H702583-24)**

Chloride, SM4500Cl-B		mg/kg		Analyzed By: AC						
Analyte	Result	Reporting Limit	Analyzed	Method Blank	BS	% Recovery	True Value QC	RPD	Qualifier	
Chloride	960	16.0	09/26/2017	ND	432	108	400	3.77		

**Sample ID: SP 4 @ 14 (H702583-25)**

Chloride, SM4500Cl-B		mg/kg		Analyzed By: AC						
Analyte	Result	Reporting Limit	Analyzed	Method Blank	BS	% Recovery	True Value QC	RPD	Qualifier	
Chloride	896	16.0	09/26/2017	ND	432	108	400	3.77		

**Sample ID: SP 4 @ 16 (H702583-26)**

Chloride, SM4500Cl-B		mg/kg		Analyzed By: AC						
Analyte	Result	Reporting Limit	Analyzed	Method Blank	BS	% Recovery	True Value QC	RPD	Qualifier	
Chloride	416	16.0	09/26/2017	ND	432	108	400	3.77		

**Sample ID: SP 4 @ 17 (H702583-27)**

Chloride, SM4500Cl-B		mg/kg		Analyzed By: AC						
Analyte	Result	Reporting Limit	Analyzed	Method Blank	BS	% Recovery	True Value QC	RPD	Qualifier	
Chloride	432	16.0	09/26/2017	ND	432	108	400	3.77		

Cardinal Laboratories

\*=Accredited Analyte

PLEASE NOTE: Liability and Damages. Cardinal's liability and client's exclusive remedy for any claim arising, whether based in contract or tort, shall be limited to the amount paid by client for analyses. All claims, including those for negligence and any other cause whatsoever shall be deemed waived unless made in writing and received by Cardinal within thirty (30) days after completion of the applicable service. In no event shall Cardinal be liable for incidental or consequential damages, including, without limitation, business interruptions, loss of use, or loss of profits incurred by client, its subsidiaries, affiliates or successors arising out of or related to the performance of the services hereunder by Cardinal, regardless of whether such claim is based upon any of the above stated reasons or otherwise. Results relate only to the samples identified above. This report shall not be reproduced except in full with written approval of Cardinal Laboratories.



Celey D. Keene, Lab Director/Quality Manager



**Analytical Results For:**

BBC International, Inc.  
Cliff Brunson  
P.O. Box 805  
Hobbs NM, 88241  
Fax To: (575) 397-0397

Received:	09/22/2017	Sampling Date:	09/19/2017
Reported:	09/29/2017	Sampling Type:	Soil
Project Name:	CEDAR CANYON 29 FED COM #3H	Sampling Condition:	Cool & Intact
Project Number:	NONE GIVEN	Sample Received By:	Tamara Oldaker
Project Location:	EDDY COUNTY		

**Sample ID: SP 4 @ 18 (H702583-28)**

BTEx 8021B		mg/kg		Analyzed By: MS						
Analyte	Result	Reporting Limit	Analyzed	Method Blank	BS	% Recovery	True Value QC	RPD	Qualifier	
Benzene*	<0.050	0.050	09/27/2017	ND	2.18	109	2.00	2.29		
Toluene*	<0.050	0.050	09/27/2017	ND	1.96	98.0	2.00	2.86		
Ethylbenzene*	<0.050	0.050	09/27/2017	ND	1.98	98.9	2.00	3.52		
Total Xylenes*	<0.150	0.150	09/27/2017	ND	6.02	100	6.00	2.83		
Total BTEx	<0.300	0.300	09/27/2017	ND						

Surrogate: 4-Bromofluorobenzene (PID) 105 % 72-148

Chloride, SM4500Cl-B		mg/kg		Analyzed By: AC					
Analyte	Result	Reporting Limit	Analyzed	Method Blank	BS	% Recovery	True Value QC	RPD	Qualifier
Chloride	16.0	16.0	09/26/2017	ND	432	108	400	3.77	

TPH 8015M		mg/kg		Analyzed By: MS					
Analyte	Result	Reporting Limit	Analyzed	Method Blank	BS	% Recovery	True Value QC	RPD	Qualifier
GRO C6-C10	<10.0	10.0	09/24/2017	ND	189	94.7	200	2.55	
DRO >C10-C28	<10.0	10.0	09/24/2017	ND	196	97.8	200	0.898	
EXT DRO >C28-C36	<10.0	10.0	09/24/2017	ND					

Surrogate: 1-Chlorooctane 66.8 % 28.3-164

Surrogate: 1-Chlorooctadecane 68.3 % 34.7-157

Cardinal Laboratories

\*=Accredited Analyte

PLEASE NOTE: Liability and Damages. Cardinal's liability and client's exclusive remedy for any claim arising, whether based in contract or tort, shall be limited to the amount paid by client for analyses. All claims, including those for negligence and any other cause whatsoever shall be deemed waived unless made in writing and received by Cardinal within thirty (30) days after completion of the applicable service. In no event shall Cardinal be liable for incidental or consequential damages, including, without limitation, business interruptions, loss of use, or loss of profits incurred by client, its subsidiaries, affiliates or successors arising out of or related to the performance of the services hereunder by Cardinal, regardless of whether such claim is based upon any of the above stated reasons or otherwise. Results relate only to the samples identified above. This report shall not be reproduced except in full with written approval of Cardinal Laboratories.



Celey D. Keene, Lab Director/Quality Manager

**Analytical Results For:**

BBC International, Inc.  
Cliff Brunson  
P.O. Box 805  
Hobbs NM, 88241  
Fax To: (575) 397-0397

Received:	09/22/2017	Sampling Date:	09/19/2017
Reported:	09/29/2017	Sampling Type:	Soil
Project Name:	CEDAR CANYON 29 FED COM #3H	Sampling Condition:	Cool & Intact
Project Number:	NONE GIVEN	Sample Received By:	Tamara Oldaker
Project Location:	EDDY COUNTY		

**Sample ID: SP 5 @ 1 (H702583-29)**

BTX 8021B		mg/kg		Analyzed By: MS						
Analyte	Result	Reporting Limit	Analyzed	Method Blank	BS	% Recovery	True Value QC	RPD	Qualifier	
Benzene*	<0.050	0.050	09/27/2017	ND	2.18	109	2.00	2.29		
Toluene*	<0.050	0.050	09/27/2017	ND	1.96	98.0	2.00	2.86		
Ethylbenzene*	<0.050	0.050	09/27/2017	ND	1.98	98.9	2.00	3.52		
Total Xylenes*	<0.150	0.150	09/27/2017	ND	6.02	100	6.00	2.83		
Total BTX	<0.300	0.300	09/27/2017	ND						

Surrogate: 4-Bromofluorobenzene (PID) 103 % 72-148

Chloride, SM4500Cl-B		mg/kg		Analyzed By: AC						
Analyte	Result	Reporting Limit	Analyzed	Method Blank	BS	% Recovery	True Value QC	RPD	Qualifier	
Chloride	1220	16.0	09/26/2017	ND	432	108	400	3.77		

TPH 8015M		mg/kg		Analyzed By: MS					
Analyte	Result	Reporting Limit	Analyzed	Method Blank	BS	% Recovery	True Value QC	RPD	Qualifier
GRO C6-C10	<10.0	10.0	09/24/2017	ND	189	94.7	200	2.55	
DRO >C10-C28	<10.0	10.0	09/24/2017	ND	196	97.8	200	0.898	
EXT DRO >C28-C36	<10.0	10.0	09/24/2017	ND					

Surrogate: 1-Chlorooctane 78.7 % 28.3-164

Surrogate: 1-Chlorooctadecane 82.2 % 34.7-157

Cardinal Laboratories

\*=Accredited Analyte

PLEASE NOTE: Liability and Damages. Cardinal's liability and client's exclusive remedy for any claim arising, whether based in contract or tort, shall be limited to the amount paid by client for analyses. All claims, including those for negligence and any other cause whatsoever shall be deemed waived unless made in writing and received by Cardinal within thirty (30) days after completion of the applicable service. In no event shall Cardinal be liable for incidental or consequential damages, including, without limitation, business interruptions, loss of use, or loss of profits incurred by client, its subsidiaries, affiliates or successors arising out of or related to the performance of the services hereunder by Cardinal, regardless of whether such claim is based upon any of the above stated reasons or otherwise. Results relate only to the samples identified above. This report shall not be reproduced except in full with written approval of Cardinal Laboratories.



Celey D. Keene, Lab Director/Quality Manager

**Analytical Results For:**

BBC International, Inc.  
Cliff Brunson  
P.O. Box 805  
Hobbs NM, 88241  
Fax To: (575) 397-0397

Received:	09/22/2017	Sampling Date:	09/19/2017
Reported:	09/29/2017	Sampling Type:	Soil
Project Name:	CEDAR CANYON 29 FED COM #3H	Sampling Condition:	Cool & Intact
Project Number:	NONE GIVEN	Sample Received By:	Tamara Oldaker
Project Location:	EDDY COUNTY		

**Sample ID: SP 5 @ 2 (H702583-30)**

BTX 8021B		mg/kg		Analyzed By: MS					
Analyte	Result	Reporting Limit	Analyzed	Method Blank	BS	% Recovery	True Value QC	RPD	Qualifier
Benzene*	<0.050	0.050	09/27/2017	ND	2.18	109	2.00	2.29	
Toluene*	<0.050	0.050	09/27/2017	ND	1.96	98.0	2.00	2.86	
Ethylbenzene*	<0.050	0.050	09/27/2017	ND	1.98	98.9	2.00	3.52	
Total Xylenes*	<0.150	0.150	09/27/2017	ND	6.02	100	6.00	2.83	
Total BTX	<0.300	0.300	09/27/2017	ND					

Surrogate: 4-Bromofluorobenzene (PID) 103 % 72-148

Chloride, SM4500CI-B		mg/kg		Analyzed By: AC					
Analyte	Result	Reporting Limit	Analyzed	Method Blank	BS	% Recovery	True Value QC	RPD	Qualifier
Chloride	272	16.0	09/26/2017	ND	432	108	400	3.77	

TPH 8015M		mg/kg		Analyzed By: MS					
Analyte	Result	Reporting Limit	Analyzed	Method Blank	BS	% Recovery	True Value QC	RPD	Qualifier
GRO C6-C10	<10.0	10.0	09/24/2017	ND	189	94.7	200	2.55	
DRO >C10-C28	<10.0	10.0	09/24/2017	ND	196	97.8	200	0.898	
EXT DRO >C28-C36	<10.0	10.0	09/24/2017	ND					

Surrogate: 1-Chlorooctane 74.2 % 28.3-164

Surrogate: 1-Chlorooctadecane 76.1 % 34.7-157

Cardinal Laboratories

\*=Accredited Analyte

PLEASE NOTE: Liability and Damages. Cardinal's liability and client's exclusive remedy for any claim arising, whether based in contract or tort, shall be limited to the amount paid by client for analyses. All claims, including those for negligence and any other cause whatsoever shall be deemed waived unless made in writing and received by Cardinal within thirty (30) days after completion of the applicable service. In no event shall Cardinal be liable for incidental or consequential damages, including, without limitation, business interruptions, loss of use, or loss of profits incurred by client, its subsidiaries, affiliates or successors arising out of or related to the performance of the services hereunder by Cardinal, regardless of whether such claim is based upon any of the above stated reasons or otherwise. Results relate only to the samples identified above. This report shall not be reproduced except in full with written approval of Cardinal Laboratories.



Celey D. Keene, Lab Director/Quality Manager

**Analytical Results For:**

BBC International, Inc.  
Cliff Brunson  
P.O. Box 805  
Hobbs NM, 88241  
Fax To: (575) 397-0397

Received:	09/22/2017	Sampling Date:	09/19/2017
Reported:	09/29/2017	Sampling Type:	Soil
Project Name:	CEDAR CANYON 29 FED COM #3H	Sampling Condition:	Cool & Intact
Project Number:	NONE GIVEN	Sample Received By:	Tamara Oldaker
Project Location:	EDDY COUNTY		

**Sample ID: SP 5 @ 3 (H702583-31)**

BTX 8021B		mg/kg		Analyzed By: MS					
Analyte	Result	Reporting Limit	Analyzed	Method Blank	BS	% Recovery	True Value QC	RPD	Qualifier
Benzene*	<0.050	0.050	09/27/2017	ND	2.02	101	2.00	0.960	
Toluene*	<0.050	0.050	09/27/2017	ND	1.83	91.5	2.00	1.28	
Ethylbenzene*	<0.050	0.050	09/27/2017	ND	1.87	93.7	2.00	0.0696	
Total Xylenes*	<0.150	0.150	09/27/2017	ND	5.68	94.7	6.00	0.269	
Total BTX	<0.300	0.300	09/27/2017	ND					

Surrogate: 4-Bromofluorobenzene (PID) 103 % 72-148

Chloride, SM4500CI-B		mg/kg		Analyzed By: AC					
Analyte	Result	Reporting Limit	Analyzed	Method Blank	BS	% Recovery	True Value QC	RPD	Qualifier
Chloride	1440	16.0	09/26/2017	ND	432	108	400	3.77	

TPH 8015M		mg/kg		Analyzed By: MS					
Analyte	Result	Reporting Limit	Analyzed	Method Blank	BS	% Recovery	True Value QC	RPD	Qualifier
GRO C6-C10	<10.0	10.0	09/24/2017	ND	189	94.7	200	2.55	
DRO >C10-C28	<10.0	10.0	09/24/2017	ND	196	97.8	200	0.898	
EXT DRO >C28-C36	<10.0	10.0	09/24/2017	ND					

Surrogate: 1-Chlorooctane 63.0 % 28.3-164

Surrogate: 1-Chlorooctadecane 69.1 % 34.7-157

Cardinal Laboratories

\*=Accredited Analyte

PLEASE NOTE: Liability and Damages. Cardinal's liability and client's exclusive remedy for any claim arising, whether based in contract or tort, shall be limited to the amount paid by client for analyses. All claims, including those for negligence and any other cause whatsoever shall be deemed waived unless made in writing and received by Cardinal within thirty (30) days after completion of the applicable service. In no event shall Cardinal be liable for incidental or consequential damages, including, without limitation, business interruptions, loss of use, or loss of profits incurred by client, its subsidiaries, affiliates or successors arising out of or related to the performance of the services hereunder by Cardinal, regardless of whether such claim is based upon any of the above stated reasons or otherwise. Results relate only to the samples identified above. This report shall not be reproduced except in full with written approval of Cardinal Laboratories.



Celey D. Keene, Lab Director/Quality Manager

**Analytical Results For:**

BBC International, Inc.  
Cliff Brunson  
P.O. Box 805  
Hobbs NM, 88241  
Fax To: (575) 397-0397

Received:	09/22/2017	Sampling Date:	09/19/2017
Reported:	09/29/2017	Sampling Type:	Soil
Project Name:	CEDAR CANYON 29 FED COM #3H	Sampling Condition:	Cool & Intact
Project Number:	NONE GIVEN	Sample Received By:	Tamara Oldaker
Project Location:	EDDY COUNTY		

**Sample ID: SP 5 @ 4 (H702583-32)**

BTEx 8021B		mg/kg		Analyzed By: MS						
Analyte	Result	Reporting Limit	Analyzed	Method Blank	BS	% Recovery	True Value QC	RPD	Qualifier	
Benzene*	<0.050	0.050	09/27/2017	ND	2.02	101	2.00	0.960		
Toluene*	<0.050	0.050	09/27/2017	ND	1.83	91.5	2.00	1.28		
Ethylbenzene*	<0.050	0.050	09/27/2017	ND	1.87	93.7	2.00	0.0696		
Total Xylenes*	<0.150	0.150	09/27/2017	ND	5.68	94.7	6.00	0.269		
Total BTEX	<0.300	0.300	09/27/2017	ND						

Surrogate: 4-Bromofluorobenzene (PID) 103 % 72-148

Chloride, SM4500Cl-B		mg/kg		Analyzed By: AC						
Analyte	Result	Reporting Limit	Analyzed	Method Blank	BS	% Recovery	True Value QC	RPD	Qualifier	
Chloride	1420	16.0	09/26/2017	ND	432	108	400	3.77		

TPH 8015M		mg/kg		Analyzed By: MS					
Analyte	Result	Reporting Limit	Analyzed	Method Blank	BS	% Recovery	True Value QC	RPD	Qualifier
GRO C6-C10	<10.0	10.0	09/24/2017	ND	189	94.7	200	2.55	
DRO >C10-C28	<10.0	10.0	09/24/2017	ND	196	97.8	200	0.898	
EXT DRO >C28-C36	<10.0	10.0	09/24/2017	ND					

Surrogate: 1-Chlorooctane 65.4 % 28.3-164

Surrogate: 1-Chlorooctadecane 67.8 % 34.7-157

Cardinal Laboratories

\*=Accredited Analyte

PLEASE NOTE: Liability and Damages. Cardinal's liability and client's exclusive remedy for any claim arising, whether based in contract or tort, shall be limited to the amount paid by client for analyses. All claims, including those for negligence and any other cause whatsoever shall be deemed waived unless made in writing and received by Cardinal within thirty (30) days after completion of the applicable service. In no event shall Cardinal be liable for incidental or consequential damages, including, without limitation, business interruptions, loss of use, or loss of profits incurred by client, its subsidiaries, affiliates or successors arising out of or related to the performance of the services hereunder by Cardinal, regardless of whether such claim is based upon any of the above stated reasons or otherwise. Results relate only to the samples identified above. This report shall not be reproduced except in full with written approval of Cardinal Laboratories.



Celey D. Keene, Lab Director/Quality Manager

**Analytical Results For:**

BBC International, Inc.  
Cliff Brunson  
P.O. Box 805  
Hobbs NM, 88241  
Fax To: (575) 397-0397

Received:	09/22/2017	Sampling Date:	09/19/2017
Reported:	09/29/2017	Sampling Type:	Soil
Project Name:	CEDAR CANYON 29 FED COM #3H	Sampling Condition:	Cool & Intact
Project Number:	NONE GIVEN	Sample Received By:	Tamara Oldaker
Project Location:	EDDY COUNTY		

**Sample ID: SP 5 @ 5 (H702583-33)**

BTEx 8021B		mg/kg		Analyzed By: MS					
Analyte	Result	Reporting Limit	Analyzed	Method Blank	BS	% Recovery	True Value QC	RPD	Qualifier
Benzene*	<0.050	0.050	09/27/2017	ND	2.02	101	2.00	0.960	
Toluene*	<0.050	0.050	09/27/2017	ND	1.83	91.5	2.00	1.28	
Ethylbenzene*	<0.050	0.050	09/27/2017	ND	1.87	93.7	2.00	0.0696	
Total Xylenes*	<0.150	0.150	09/27/2017	ND	5.68	94.7	6.00	0.269	
Total BTEx	<0.300	0.300	09/27/2017	ND					

Surrogate: 4-Bromofluorobenzene (PID) 104 % 72-148

Chloride, SM4500Cl-B		mg/kg		Analyzed By: AC					
Analyte	Result	Reporting Limit	Analyzed	Method Blank	BS	% Recovery	True Value QC	RPD	Qualifier
Chloride	1280	16.0	09/26/2017	ND	432	108	400	3.77	

TPH 8015M		mg/kg		Analyzed By: MS					
Analyte	Result	Reporting Limit	Analyzed	Method Blank	BS	% Recovery	True Value QC	RPD	Qualifier
GRO C6-C10	<10.0	10.0	09/24/2017	ND	189	94.7	200	2.55	
DRO >C10-C28	<10.0	10.0	09/24/2017	ND	196	97.8	200	0.898	
EXT DRO >C28-C36	<10.0	10.0	09/24/2017	ND					

Surrogate: 1-Chlorooctane 47.4 % 28.3-164

Surrogate: 1-Chlorooctadecane 48.2 % 34.7-157

Cardinal Laboratories

\*=Accredited Analyte

PLEASE NOTE: Liability and Damages. Cardinal's liability and client's exclusive remedy for any claim arising, whether based in contract or tort, shall be limited to the amount paid by client for analyses. All claims, including those for negligence and any other cause whatsoever shall be deemed waived unless made in writing and received by Cardinal within thirty (30) days after completion of the applicable service. In no event shall Cardinal be liable for incidental or consequential damages, including, without limitation, business interruptions, loss of use, or loss of profits incurred by client, its subsidiaries, affiliates or successors arising out of or related to the performance of the services hereunder by Cardinal, regardless of whether such claim is based upon any of the above stated reasons or otherwise. Results relate only to the samples identified above. This report shall not be reproduced except in full with written approval of Cardinal Laboratories.



Celey D. Keene, Lab Director/Quality Manager



**Analytical Results For:**

BBC International, Inc.  
Cliff Brunson  
P.O. Box 805  
Hobbs NM, 88241  
Fax To: (575) 397-0397

Received:	09/22/2017	Sampling Date:	09/19/2017
Reported:	09/29/2017	Sampling Type:	Soil
Project Name:	CEDAR CANYON 29 FED COM #3H	Sampling Condition:	Cool & Intact
Project Number:	NONE GIVEN	Sample Received By:	Tamara Oldaker
Project Location:	EDDY COUNTY		

**Sample ID: SP 5 @ 6 (H702583-34)**

Chloride, SM4500Cl-B		mg/kg		Analyzed By: AC						
Analyte	Result	Reporting Limit	Analyzed	Method Blank	BS	% Recovery	True Value QC	RPD	Qualifier	
Chloride	560	16.0	09/26/2017	ND	432	108	400	3.77		

**Sample ID: SP 5 @ 7 (H702583-35)**

Chloride, SM4500Cl-B		mg/kg		Analyzed By: AC					
Analyte	Result	Reporting Limit	Analyzed	Method Blank	BS	% Recovery	True Value QC	RPD	Qualifier
Chloride	576	16.0	09/26/2017	ND	432	108	400	3.77	

**Sample ID: SP 5 @ 8 (H702583-36)**

Chloride, SM4500Cl-B		mg/kg		Analyzed By: AC					
Analyte	Result	Reporting Limit	Analyzed	Method Blank	BS	% Recovery	True Value QC	RPD	Qualifier
Chloride	208	16.0	09/26/2017	ND	432	108	400	3.77	

**Sample ID: SP 5 @ 13 (H702583-37)**

Chloride, SM4500Cl-B		mg/kg		Analyzed By: AC					
Analyte	Result	Reporting Limit	Analyzed	Method Blank	BS	% Recovery	True Value QC	RPD	Qualifier
Chloride	256	16.0	09/26/2017	ND	432	108	400	3.77	

Cardinal Laboratories

\*=Accredited Analyte

PLEASE NOTE: Liability and Damages. Cardinal's liability and client's exclusive remedy for any claim arising, whether based in contract or tort, shall be limited to the amount paid by client for analyses. All claims, including those for negligence and any other cause whatsoever shall be deemed waived unless made in writing and received by Cardinal within thirty (30) days after completion of the applicable service. In no event shall Cardinal be liable for incidental or consequential damages, including, without limitation, business interruptions, loss of use, or loss of profits incurred by client, its subsidiaries, affiliates or successors arising out of or related to the performance of the services hereunder by Cardinal, regardless of whether such claim is based upon any of the above stated reasons or otherwise. Results relate only to the samples identified above. This report shall not be reproduced except in full with written approval of Cardinal Laboratories.



Celey D. Keene, Lab Director/Quality Manager

**Analytical Results For:**

BBC International, Inc.  
Cliff Brunson  
P.O. Box 805  
Hobbs NM, 88241  
Fax To: (575) 397-0397

Received:	09/22/2017	Sampling Date:	09/19/2017
Reported:	09/29/2017	Sampling Type:	Soil
Project Name:	CEDAR CANYON 29 FED COM #3H	Sampling Condition:	Cool & Intact
Project Number:	NONE GIVEN	Sample Received By:	Tamara Oldaker
Project Location:	EDDY COUNTY		

**Sample ID: SP 5 @ 18 (H702583-38)**

BTX 8021B		mg/kg		Analyzed By: MS					
Analyte	Result	Reporting Limit	Analyzed	Method Blank	BS	% Recovery	True Value QC	RPD	Qualifier
Benzene*	<0.050	0.050	09/27/2017	ND	2.02	101	2.00	0.960	
Toluene*	<0.050	0.050	09/27/2017	ND	1.83	91.5	2.00	1.28	
Ethylbenzene*	<0.050	0.050	09/27/2017	ND	1.87	93.7	2.00	0.0696	
Total Xylenes*	<0.150	0.150	09/27/2017	ND	5.68	94.7	6.00	0.269	
Total BTX	<0.300	0.300	09/27/2017	ND					

Surrogate: 4-Bromofluorobenzene (PID) 103 % 72-148

Chloride, SM4500CI-B		mg/kg		Analyzed By: AC					
Analyte	Result	Reporting Limit	Analyzed	Method Blank	BS	% Recovery	True Value QC	RPD	Qualifier
Chloride	224	16.0	09/26/2017	ND	432	108	400	3.77	

TPH 8015M		mg/kg		Analyzed By: MS					
Analyte	Result	Reporting Limit	Analyzed	Method Blank	BS	% Recovery	True Value QC	RPD	Qualifier
GRO C6-C10	<10.0	10.0	09/24/2017	ND	189	94.7	200	2.55	
DRO >C10-C28	<10.0	10.0	09/24/2017	ND	196	97.8	200	0.898	
EXT DRO >C28-C36	<10.0	10.0	09/24/2017	ND					

Surrogate: 1-Chlorooctane 61.2 % 28.3-164

Surrogate: 1-Chlorooctadecane 69.8 % 34.7-157

Cardinal Laboratories

\*=Accredited Analyte

PLEASE NOTE: Liability and Damages. Cardinal's liability and client's exclusive remedy for any claim arising, whether based in contract or tort, shall be limited to the amount paid by client for analyses. All claims, including those for negligence and any other cause whatsoever shall be deemed waived unless made in writing and received by Cardinal within thirty (30) days after completion of the applicable service. In no event shall Cardinal be liable for incidental or consequential damages, including, without limitation, business interruptions, loss of use, or loss of profits incurred by client, its subsidiaries, affiliates or successors arising out of or related to the performance of the services hereunder by Cardinal, regardless of whether such claim is based upon any of the above stated reasons or otherwise. Results relate only to the samples identified above. This report shall not be reproduced except in full with written approval of Cardinal Laboratories.



Celey D. Keene, Lab Director/Quality Manager

**Analytical Results For:**

BBC International, Inc.  
Cliff Brunson  
P.O. Box 805  
Hobbs NM, 88241  
Fax To: (575) 397-0397

Received:	09/22/2017	Sampling Date:	09/20/2017
Reported:	09/29/2017	Sampling Type:	Soil
Project Name:	CEDAR CANYON 29 FED COM #3H	Sampling Condition:	Cool & Intact
Project Number:	NONE GIVEN	Sample Received By:	Tamara Oldaker
Project Location:	EDDY COUNTY		

**Sample ID: SP 6 @ SURFACE (H702583-39)**

BTX 8021B		mg/kg		Analyzed By: MS						
Analyte	Result	Reporting Limit	Analyzed	Method Blank	BS	% Recovery	True Value QC	RPD	Qualifier	
Benzene*	<0.050	0.050	09/27/2017	ND	2.02	101	2.00	0.960		
Toluene*	<0.050	0.050	09/27/2017	ND	1.83	91.5	2.00	1.28		
Ethylbenzene*	<0.050	0.050	09/27/2017	ND	1.87	93.7	2.00	0.0696		
Total Xylenes*	<0.150	0.150	09/27/2017	ND	5.68	94.7	6.00	0.269		
Total BTX	<0.300	0.300	09/27/2017	ND						

Surrogate: 4-Bromofluorobenzene (PID) 105 % 72-148

Chloride, SM4500Cl-B		mg/kg		Analyzed By: AC					
Analyte	Result	Reporting Limit	Analyzed	Method Blank	BS	% Recovery	True Value QC	RPD	Qualifier
Chloride	176	16.0	09/26/2017	ND	432	108	400	3.77	

TPH 8015M		mg/kg		Analyzed By: MS					
Analyte	Result	Reporting Limit	Analyzed	Method Blank	BS	% Recovery	True Value QC	RPD	Qualifier
GRO C6-C10	<10.0	10.0	09/25/2017	ND	189	94.7	200	2.55	
DRO >C10-C28	<10.0	10.0	09/25/2017	ND	196	97.8	200	0.898	
EXT DRO >C28-C36	<10.0	10.0	09/25/2017	ND					

Surrogate: 1-Chlorooctane 61.6 % 28.3-164

Surrogate: 1-Chlorooctadecane 69.4 % 34.7-157

Cardinal Laboratories

\*=Accredited Analyte

PLEASE NOTE: Liability and Damages. Cardinal's liability and client's exclusive remedy for any claim arising, whether based in contract or tort, shall be limited to the amount paid by client for analyses. All claims, including those for negligence and any other cause whatsoever shall be deemed waived unless made in writing and received by Cardinal within thirty (30) days after completion of the applicable service. In no event shall Cardinal be liable for incidental or consequential damages, including, without limitation, business interruptions, loss of use, or loss of profits incurred by client, its subsidiaries, affiliates or successors arising out of or related to the performance of the services hereunder by Cardinal, regardless of whether such claim is based upon any of the above stated reasons or otherwise. Results relate only to the samples identified above. This report shall not be reproduced except in full with written approval of Cardinal Laboratories.



Celey D. Keene, Lab Director/Quality Manager

**Analytical Results For:**

BBC International, Inc.  
Cliff Brunson  
P.O. Box 805  
Hobbs NM, 88241  
Fax To: (575) 397-0397

Received:	09/22/2017	Sampling Date:	09/20/2017
Reported:	09/29/2017	Sampling Type:	Soil
Project Name:	CEDAR CANYON 29 FED COM #3H	Sampling Condition:	Cool & Intact
Project Number:	NONE GIVEN	Sample Received By:	Tamara Oldaker
Project Location:	EDDY COUNTY		

**Sample ID: SP 6 @ 1 (H702583-40)**

BTX 8021B		mg/kg		Analyzed By: MS						
Analyte	Result	Reporting Limit	Analyzed	Method Blank	BS	% Recovery	True Value QC	RPD	Qualifier	
Benzene*	<0.050	0.050	09/27/2017	ND	2.02	101	2.00	0.960		
Toluene*	<0.050	0.050	09/27/2017	ND	1.83	91.5	2.00	1.28		
Ethylbenzene*	<0.050	0.050	09/27/2017	ND	1.87	93.7	2.00	0.0696		
Total Xylenes*	<0.150	0.150	09/27/2017	ND	5.68	94.7	6.00	0.269		
Total BTX	<0.300	0.300	09/27/2017	ND						

Surrogate: 4-Bromofluorobenzene (PID) 104 % 72-148

Chloride, SM4500Cl-B		mg/kg		Analyzed By: AC						
Analyte	Result	Reporting Limit	Analyzed	Method Blank	BS	% Recovery	True Value QC	RPD	Qualifier	
Chloride	32.0	16.0	09/26/2017	ND	432	108	400	3.77		

TPH 8015M		mg/kg		Analyzed By: MS					
Analyte	Result	Reporting Limit	Analyzed	Method Blank	BS	% Recovery	True Value QC	RPD	Qualifier
GRO C6-C10	<10.0	10.0	09/25/2017	ND	189	94.7	200	2.55	
DRO >C10-C28	<10.0	10.0	09/25/2017	ND	196	97.8	200	0.898	
EXT DRO >C28-C36	<10.0	10.0	09/25/2017	ND					

Surrogate: 1-Chlorooctane 50.3 % 28.3-164

Surrogate: 1-Chlorooctadecane 60.3 % 34.7-157

Cardinal Laboratories

\*=Accredited Analyte

PLEASE NOTE: Liability and Damages. Cardinal's liability and client's exclusive remedy for any claim arising, whether based in contract or tort, shall be limited to the amount paid by client for analyses. All claims, including those for negligence and any other cause whatsoever shall be deemed waived unless made in writing and received by Cardinal within thirty (30) days after completion of the applicable service. In no event shall Cardinal be liable for incidental or consequential damages, including, without limitation, business interruptions, loss of use, or loss of profits incurred by client, its subsidiaries, affiliates or successors arising out of or related to the performance of the services hereunder by Cardinal, regardless of whether such claim is based upon any of the above stated reasons or otherwise. Results relate only to the samples identified above. This report shall not be reproduced except in full with written approval of Cardinal Laboratories.



Celey D. Keene, Lab Director/Quality Manager

**Analytical Results For:**

BBC International, Inc.  
Cliff Brunson  
P.O. Box 805  
Hobbs NM, 88241  
Fax To: (575) 397-0397

Received:	09/22/2017	Sampling Date:	09/20/2017
Reported:	09/29/2017	Sampling Type:	Soil
Project Name:	CEDAR CANYON 29 FED COM #3H	Sampling Condition:	Cool & Intact
Project Number:	NONE GIVEN	Sample Received By:	Tamara Oldaker
Project Location:	EDDY COUNTY		

**Sample ID: SP 6 @ 6 (H702583-41)**

BTEx 8021B		mg/kg		Analyzed By: MS					
Analyte	Result	Reporting Limit	Analyzed	Method Blank	BS	% Recovery	True Value QC	RPD	Qualifier
Benzene*	<0.050	0.050	09/27/2017	ND	2.02	101	2.00	0.960	
Toluene*	<0.050	0.050	09/27/2017	ND	1.83	91.5	2.00	1.28	
Ethylbenzene*	<0.050	0.050	09/27/2017	ND	1.87	93.7	2.00	0.0696	
Total Xylenes*	<0.150	0.150	09/27/2017	ND	5.68	94.7	6.00	0.269	
Total BTEx	<0.300	0.300	09/27/2017	ND					

Surrogate: 4-Bromofluorobenzene (PID) 103 % 72-148

Chloride, SM4500Cl-B		mg/kg		Analyzed By: AC					
Analyte	Result	Reporting Limit	Analyzed	Method Blank	BS	% Recovery	True Value QC	RPD	Qualifier
Chloride	32.0	16.0	09/26/2017	ND	432	108	400	3.77	

TPH 8015M		mg/kg		Analyzed By: MS					
Analyte	Result	Reporting Limit	Analyzed	Method Blank	BS	% Recovery	True Value QC	RPD	Qualifier
GRO C6-C10	<10.0	10.0	09/25/2017	ND	189	94.7	200	2.55	
DRO >C10-C28	<10.0	10.0	09/25/2017	ND	196	97.8	200	0.898	
EXT DRO >C28-C36	<10.0	10.0	09/25/2017	ND					

Surrogate: 1-Chlorooctane 61.7 % 28.3-164

Surrogate: 1-Chlorooctadecane 68.4 % 34.7-157

Cardinal Laboratories

\*=Accredited Analyte

PLEASE NOTE: Liability and Damages. Cardinal's liability and client's exclusive remedy for any claim arising, whether based in contract or tort, shall be limited to the amount paid by client for analyses. All claims, including those for negligence and any other cause whatsoever shall be deemed waived unless made in writing and received by Cardinal within thirty (30) days after completion of the applicable service. In no event shall Cardinal be liable for incidental or consequential damages, including, without limitation, business interruptions, loss of use, or loss of profits incurred by client, its subsidiaries, affiliates or successors arising out of or related to the performance of the services hereunder by Cardinal, regardless of whether such claim is based upon any of the above stated reasons or otherwise. Results relate only to the samples identified above. This report shall not be reproduced except in full with written approval of Cardinal Laboratories.



Celey D. Keene, Lab Director/Quality Manager

**Analytical Results For:**

BBC International, Inc.  
Cliff Brunson  
P.O. Box 805  
Hobbs NM, 88241  
Fax To: (575) 397-0397

Received:	09/22/2017	Sampling Date:	09/20/2017
Reported:	09/29/2017	Sampling Type:	Soil
Project Name:	CEDAR CANYON 29 FED COM #3H	Sampling Condition:	Cool & Intact
Project Number:	NONE GIVEN	Sample Received By:	Tamara Oldaker
Project Location:	EDDY COUNTY		

**Sample ID: SP 6 @ 11 (H702583-42)**

BTEx 8021B		mg/kg		Analyzed By: MS					
Analyte	Result	Reporting Limit	Analyzed	Method Blank	BS	% Recovery	True Value QC	RPD	Qualifier
Benzene*	<0.050	0.050	09/27/2017	ND	2.02	101	2.00	0.960	
Toluene*	<0.050	0.050	09/27/2017	ND	1.83	91.5	2.00	1.28	
Ethylbenzene*	<0.050	0.050	09/27/2017	ND	1.87	93.7	2.00	0.0696	
Total Xylenes*	<0.150	0.150	09/27/2017	ND	5.68	94.7	6.00	0.269	
Total BTEX	<0.300	0.300	09/27/2017	ND					

Surrogate: 4-Bromofluorobenzene (PID) 104 % 72-148

Chloride, SM4500Cl-B		mg/kg		Analyzed By: AC					
Analyte	Result	Reporting Limit	Analyzed	Method Blank	BS	% Recovery	True Value QC	RPD	Qualifier
Chloride	16.0	16.0	09/26/2017	ND	416	104	400	0.00	

TPH 8015M		mg/kg		Analyzed By: MS					
Analyte	Result	Reporting Limit	Analyzed	Method Blank	BS	% Recovery	True Value QC	RPD	Qualifier
GRO C6-C10	<10.0	10.0	09/25/2017	ND	189	94.7	200	2.55	
DRO >C10-C28	<10.0	10.0	09/25/2017	ND	196	97.8	200	0.898	
EXT DRO >C28-C36	<10.0	10.0	09/25/2017	ND					

Surrogate: 1-Chlorooctane 55.6 % 28.3-164

Surrogate: 1-Chlorooctadecane 60.8 % 34.7-157

Cardinal Laboratories

\*=Accredited Analyte

PLEASE NOTE: Liability and Damages. Cardinal's liability and client's exclusive remedy for any claim arising, whether based in contract or tort, shall be limited to the amount paid by client for analyses. All claims, including those for negligence and any other cause whatsoever shall be deemed waived unless made in writing and received by Cardinal within thirty (30) days after completion of the applicable service. In no event shall Cardinal be liable for incidental or consequential damages, including, without limitation, business interruptions, loss of use, or loss of profits incurred by client, its subsidiaries, affiliates or successors arising out of or related to the performance of the services hereunder by Cardinal, regardless of whether such claim is based upon any of the above stated reasons or otherwise. Results relate only to the samples identified above. This report shall not be reproduced except in full with written approval of Cardinal Laboratories.



Celey D. Keene, Lab Director/Quality Manager



**Analytical Results For:**

BBC International, Inc.  
Cliff Brunson  
P.O. Box 805  
Hobbs NM, 88241  
Fax To: (575) 397-0397

Received:	09/22/2017	Sampling Date:	09/20/2017
Reported:	09/29/2017	Sampling Type:	Soil
Project Name:	CEDAR CANYON 29 FED COM #3H	Sampling Condition:	Cool & Intact
Project Number:	NONE GIVEN	Sample Received By:	Tamara Oldaker
Project Location:	EDDY COUNTY		

**Sample ID: SP 7 @ SURFACE (H702583-43)**

BTX 8021B		mg/kg		Analyzed By: MS						
Analyte	Result	Reporting Limit	Analyzed	Method Blank	BS	% Recovery	True Value QC	RPD	Qualifier	
Benzene*	<0.050	0.050	09/27/2017	ND	2.02	101	2.00	0.960		
Toluene*	<0.050	0.050	09/27/2017	ND	1.83	91.5	2.00	1.28		
Ethylbenzene*	<0.050	0.050	09/27/2017	ND	1.87	93.7	2.00	0.0696		
Total Xylenes*	<0.150	0.150	09/27/2017	ND	5.68	94.7	6.00	0.269		
Total BTX	<0.300	0.300	09/27/2017	ND						

Surrogate: 4-Bromofluorobenzene (PID) 103 % 72-148

Chloride, SM4500Cl-B		mg/kg		Analyzed By: AC						
Analyte	Result	Reporting Limit	Analyzed	Method Blank	BS	% Recovery	True Value QC	RPD	Qualifier	
Chloride	<16.0	16.0	09/26/2017	ND	416	104	400	0.00		

TPH 8015M		mg/kg		Analyzed By: MS					
Analyte	Result	Reporting Limit	Analyzed	Method Blank	BS	% Recovery	True Value QC	RPD	Qualifier
GRO C6-C10	<10.0	10.0	09/25/2017	ND	189	94.7	200	2.55	
DRO >C10-C28	138	10.0	09/25/2017	ND	196	97.8	200	0.898	
EXT DRO >C28-C36	59.6	10.0	09/25/2017	ND					

Surrogate: 1-Chlorooctane 69.3 % 28.3-164

Surrogate: 1-Chlorooctadecane 88.8 % 34.7-157

Cardinal Laboratories

\*=Accredited Analyte

PLEASE NOTE: Liability and Damages. Cardinal's liability and client's exclusive remedy for any claim arising, whether based in contract or tort, shall be limited to the amount paid by client for analyses. All claims, including those for negligence and any other cause whatsoever shall be deemed waived unless made in writing and received by Cardinal within thirty (30) days after completion of the applicable service. In no event shall Cardinal be liable for incidental or consequential damages, including, without limitation, business interruptions, loss of use, or loss of profits incurred by client, its subsidiaries, affiliates or successors arising out of or related to the performance of the services hereunder by Cardinal, regardless of whether such claim is based upon any of the above stated reasons or otherwise. Results relate only to the samples identified above. This report shall not be reproduced except in full with written approval of Cardinal Laboratories.



Celey D. Keene, Lab Director/Quality Manager

**Analytical Results For:**

BBC International, Inc.  
Cliff Brunson  
P.O. Box 805  
Hobbs NM, 88241  
Fax To: (575) 397-0397

Received:	09/22/2017	Sampling Date:	09/20/2017
Reported:	09/29/2017	Sampling Type:	Soil
Project Name:	CEDAR CANYON 29 FED COM #3H	Sampling Condition:	Cool & Intact
Project Number:	NONE GIVEN	Sample Received By:	Tamara Oldaker
Project Location:	EDDY COUNTY		

**Sample ID: SP 7 @ 1 (H702583-44)**

BTEx 8021B		mg/kg		Analyzed By: MS						
Analyte	Result	Reporting Limit	Analyzed	Method Blank	BS	% Recovery	True Value QC	RPD	Qualifier	
Benzene*	<0.050	0.050	09/27/2017	ND	2.02	101	2.00	0.960		
Toluene*	<0.050	0.050	09/27/2017	ND	1.83	91.5	2.00	1.28		
Ethylbenzene*	<0.050	0.050	09/27/2017	ND	1.87	93.7	2.00	0.0696		
Total Xylenes*	<0.150	0.150	09/27/2017	ND	5.68	94.7	6.00	0.269		
Total BTEX	<0.300	0.300	09/27/2017	ND						

Surrogate: 4-Bromofluorobenzene (PID) 104 % 72-148

Chloride, SM4500Cl-B		mg/kg		Analyzed By: AC						
Analyte	Result	Reporting Limit	Analyzed	Method Blank	BS	% Recovery	True Value QC	RPD	Qualifier	
Chloride	<16.0	16.0	09/26/2017	ND	416	104	400	0.00		

TPH 8015M		mg/kg		Analyzed By: MS						
Analyte	Result	Reporting Limit	Analyzed	Method Blank	BS	% Recovery	True Value QC	RPD	Qualifier	
GRO C6-C10	<10.0	10.0	09/25/2017	ND	189	94.7	200	2.55		
DRO >C10-C28	<10.0	10.0	09/25/2017	ND	196	97.8	200	0.898		
EXT DRO >C28-C36	<10.0	10.0	09/25/2017	ND						

Surrogate: 1-Chlorooctane 51.7 % 28.3-164

Surrogate: 1-Chlorooctadecane 56.9 % 34.7-157

Cardinal Laboratories

\*=Accredited Analyte

PLEASE NOTE: Liability and Damages. Cardinal's liability and client's exclusive remedy for any claim arising, whether based in contract or tort, shall be limited to the amount paid by client for analyses. All claims, including those for negligence and any other cause whatsoever shall be deemed waived unless made in writing and received by Cardinal within thirty (30) days after completion of the applicable service. In no event shall Cardinal be liable for incidental or consequential damages, including, without limitation, business interruptions, loss of use, or loss of profits incurred by client, its subsidiaries, affiliates or successors arising out of or related to the performance of the services hereunder by Cardinal, regardless of whether such claim is based upon any of the above stated reasons or otherwise. Results relate only to the samples identified above. This report shall not be reproduced except in full with written approval of Cardinal Laboratories.



Celey D. Keene, Lab Director/Quality Manager

**Analytical Results For:**

BBC International, Inc.  
Cliff Brunson  
P.O. Box 805  
Hobbs NM, 88241  
Fax To: (575) 397-0397

Received:	09/22/2017	Sampling Date:	09/20/2017
Reported:	09/29/2017	Sampling Type:	Soil
Project Name:	CEDAR CANYON 29 FED COM #3H	Sampling Condition:	Cool & Intact
Project Number:	NONE GIVEN	Sample Received By:	Tamara Oldaker
Project Location:	EDDY COUNTY		

**Sample ID: SP 7 @ 6 (H702583-45)**

BTX 8021B		mg/kg		Analyzed By: MS						
Analyte	Result	Reporting Limit	Analyzed	Method Blank	BS	% Recovery	True Value QC	RPD	Qualifier	
Benzene*	<0.050	0.050	09/28/2017	ND	2.02	101	2.00	0.960		
Toluene*	<0.050	0.050	09/28/2017	ND	1.83	91.5	2.00	1.28		
Ethylbenzene*	<0.050	0.050	09/28/2017	ND	1.87	93.7	2.00	0.0696		
Total Xylenes*	<0.150	0.150	09/28/2017	ND	5.68	94.7	6.00	0.269		
Total BTX	<0.300	0.300	09/28/2017	ND						

Surrogate: 4-Bromofluorobenzene (PID) 104 % 72-148

Chloride, SM4500Cl-B		mg/kg		Analyzed By: AC						
Analyte	Result	Reporting Limit	Analyzed	Method Blank	BS	% Recovery	True Value QC	RPD	Qualifier	
Chloride	32.0	16.0	09/26/2017	ND	416	104	400	0.00		

TPH 8015M		mg/kg		Analyzed By: MS					
Analyte	Result	Reporting Limit	Analyzed	Method Blank	BS	% Recovery	True Value QC	RPD	Qualifier
GRO C6-C10	<10.0	10.0	09/25/2017	ND	181	90.6	200	1.81	
DRO >C10-C28	<10.0	10.0	09/25/2017	ND	198	99.0	200	1.73	
EXT DRO >C28-C36	<10.0	10.0	09/25/2017	ND					

Surrogate: 1-Chlorooctane 76.9 % 28.3-164

Surrogate: 1-Chlorooctadecane 88.8 % 34.7-157

Cardinal Laboratories

\*=Accredited Analyte

PLEASE NOTE: Liability and Damages. Cardinal's liability and client's exclusive remedy for any claim arising, whether based in contract or tort, shall be limited to the amount paid by client for analyses. All claims, including those for negligence and any other cause whatsoever shall be deemed waived unless made in writing and received by Cardinal within thirty (30) days after completion of the applicable service. In no event shall Cardinal be liable for incidental or consequential damages, including, without limitation, business interruptions, loss of use, or loss of profits incurred by client, its subsidiaries, affiliates or successors arising out of or related to the performance of the services hereunder by Cardinal, regardless of whether such claim is based upon any of the above stated reasons or otherwise. Results relate only to the samples identified above. This report shall not be reproduced except in full with written approval of Cardinal Laboratories.



Celey D. Keene, Lab Director/Quality Manager

**Analytical Results For:**

BBC International, Inc.  
Cliff Brunson  
P.O. Box 805  
Hobbs NM, 88241  
Fax To: (575) 397-0397

Received:	09/22/2017	Sampling Date:	09/20/2017
Reported:	09/29/2017	Sampling Type:	Soil
Project Name:	CEDAR CANYON 29 FED COM #3H	Sampling Condition:	Cool & Intact
Project Number:	NONE GIVEN	Sample Received By:	Tamara Oldaker
Project Location:	EDDY COUNTY		

**Sample ID: SP 7 @ 11 (H702583-46)**

BTEx 8021B		mg/kg		Analyzed By: MS						
Analyte	Result	Reporting Limit	Analyzed	Method Blank	BS	% Recovery	True Value QC	RPD	Qualifier	
Benzene*	<0.050	0.050	09/28/2017	ND	2.02	101	2.00	0.960		
Toluene*	<0.050	0.050	09/28/2017	ND	1.83	91.5	2.00	1.28		
Ethylbenzene*	<0.050	0.050	09/28/2017	ND	1.87	93.7	2.00	0.0696		
Total Xylenes*	<0.150	0.150	09/28/2017	ND	5.68	94.7	6.00	0.269		
Total BTEx	<0.300	0.300	09/28/2017	ND						

Surrogate: 4-Bromofluorobenzene (PID) 104 % 72-148

Chloride, SM4500Cl-B		mg/kg		Analyzed By: AC						
Analyte	Result	Reporting Limit	Analyzed	Method Blank	BS	% Recovery	True Value QC	RPD	Qualifier	
Chloride	<16.0	16.0	09/26/2017	ND	416	104	400	0.00		

TPH 8015M		mg/kg		Analyzed By: MS					
Analyte	Result	Reporting Limit	Analyzed	Method Blank	BS	% Recovery	True Value QC	RPD	Qualifier
GRO C6-C10	<10.0	10.0	09/25/2017	ND	181	90.6	200	1.81	
DRO >C10-C28	<10.0	10.0	09/25/2017	ND	198	99.0	200	1.73	
EXT DRO >C28-C36	<10.0	10.0	09/25/2017	ND					

Surrogate: 1-Chlorooctane 60.2 % 28.3-164

Surrogate: 1-Chlorooctadecane 59.7 % 34.7-157

Cardinal Laboratories

\*=Accredited Analyte

PLEASE NOTE: Liability and Damages. Cardinal's liability and client's exclusive remedy for any claim arising, whether based in contract or tort, shall be limited to the amount paid by client for analyses. All claims, including those for negligence and any other cause whatsoever shall be deemed waived unless made in writing and received by Cardinal within thirty (30) days after completion of the applicable service. In no event shall Cardinal be liable for incidental or consequential damages, including, without limitation, business interruptions, loss of use, or loss of profits incurred by client, its subsidiaries, affiliates or successors arising out of or related to the performance of the services hereunder by Cardinal, regardless of whether such claim is based upon any of the above stated reasons or otherwise. Results relate only to the samples identified above. This report shall not be reproduced except in full with written approval of Cardinal Laboratories.



Celey D. Keene, Lab Director/Quality Manager

**Analytical Results For:**

BBC International, Inc.  
Cliff Brunson  
P.O. Box 805  
Hobbs NM, 88241  
Fax To: (575) 397-0397

Received:	09/22/2017	Sampling Date:	09/20/2017
Reported:	09/29/2017	Sampling Type:	Soil
Project Name:	CEDAR CANYON 29 FED COM #3H	Sampling Condition:	Cool & Intact
Project Number:	NONE GIVEN	Sample Received By:	Tamara Oldaker
Project Location:	EDDY COUNTY		

**Sample ID: SP 8 @ SURFACE (H702583-47)**

BTEx 8021B		mg/kg		Analyzed By: MS						
Analyte	Result	Reporting Limit	Analyzed	Method Blank	BS	% Recovery	True Value QC	RPD	Qualifier	
Benzene*	<0.050	0.050	09/28/2017	ND	2.02	101	2.00	0.960		
Toluene*	<0.050	0.050	09/28/2017	ND	1.83	91.5	2.00	1.28		
Ethylbenzene*	<0.050	0.050	09/28/2017	ND	1.87	93.7	2.00	0.0696		
Total Xylenes*	<0.150	0.150	09/28/2017	ND	5.68	94.7	6.00	0.269		
Total BTEx	<0.300	0.300	09/28/2017	ND						

Surrogate: 4-Bromofluorobenzene (PID) 103 % 72-148

Chloride, SM4500CI-B		mg/kg		Analyzed By: AC					
Analyte	Result	Reporting Limit	Analyzed	Method Blank	BS	% Recovery	True Value QC	RPD	Qualifier
Chloride	224	16.0	09/26/2017	ND	416	104	400	0.00	

TPH 8015M		mg/kg		Analyzed By: MS					
Analyte	Result	Reporting Limit	Analyzed	Method Blank	BS	% Recovery	True Value QC	RPD	Qualifier
GRO C6-C10	<10.0	10.0	09/25/2017	ND	181	90.6	200	1.81	
DRO >C10-C28	<10.0	10.0	09/25/2017	ND	198	99.0	200	1.73	
EXT DRO >C28-C36	<10.0	10.0	09/25/2017	ND					

Surrogate: 1-Chlorooctane 73.1 % 28.3-164

Surrogate: 1-Chlorooctadecane 74.2 % 34.7-157

Cardinal Laboratories

\*=Accredited Analyte

PLEASE NOTE: Liability and Damages. Cardinal's liability and client's exclusive remedy for any claim arising, whether based in contract or tort, shall be limited to the amount paid by client for analyses. All claims, including those for negligence and any other cause whatsoever shall be deemed waived unless made in writing and received by Cardinal within thirty (30) days after completion of the applicable service. In no event shall Cardinal be liable for incidental or consequential damages, including, without limitation, business interruptions, loss of use, or loss of profits incurred by client, its subsidiaries, affiliates or successors arising out of or related to the performance of the services hereunder by Cardinal, regardless of whether such claim is based upon any of the above stated reasons or otherwise. Results relate only to the samples identified above. This report shall not be reproduced except in full with written approval of Cardinal Laboratories.



Celey D. Keene, Lab Director/Quality Manager

**Analytical Results For:**

BBC International, Inc.  
Cliff Brunson  
P.O. Box 805  
Hobbs NM, 88241  
Fax To: (575) 397-0397

Received:	09/22/2017	Sampling Date:	09/20/2017
Reported:	09/29/2017	Sampling Type:	Soil
Project Name:	CEDAR CANYON 29 FED COM #3H	Sampling Condition:	Cool & Intact
Project Number:	NONE GIVEN	Sample Received By:	Tamara Oldaker
Project Location:	EDDY COUNTY		

**Sample ID: SP 8 @ 1 (H702583-48)**

BTX 8021B		mg/kg		Analyzed By: MS						
Analyte	Result	Reporting Limit	Analyzed	Method Blank	BS	% Recovery	True Value QC	RPD	Qualifier	
Benzene*	<0.050	0.050	09/28/2017	ND	2.02	101	2.00	0.960		
Toluene*	<0.050	0.050	09/28/2017	ND	1.83	91.5	2.00	1.28		
Ethylbenzene*	<0.050	0.050	09/28/2017	ND	1.87	93.7	2.00	0.0696		
Total Xylenes*	<0.150	0.150	09/28/2017	ND	5.68	94.7	6.00	0.269		
Total BTX	<0.300	0.300	09/28/2017	ND						

Surrogate: 4-Bromofluorobenzene (PID) 103 % 72-148

Chloride, SM4500Cl-B		mg/kg		Analyzed By: AC					
Analyte	Result	Reporting Limit	Analyzed	Method Blank	BS	% Recovery	True Value QC	RPD	Qualifier
Chloride	80.0	16.0	09/26/2017	ND	416	104	400	0.00	

TPH 8015M		mg/kg		Analyzed By: MS					
Analyte	Result	Reporting Limit	Analyzed	Method Blank	BS	% Recovery	True Value QC	RPD	Qualifier
GRO C6-C10	<10.0	10.0	09/25/2017	ND	181	90.6	200	1.81	
DRO >C10-C28	<10.0	10.0	09/25/2017	ND	198	99.0	200	1.73	
EXT DRO >C28-C36	<10.0	10.0	09/25/2017	ND					

Surrogate: 1-Chlorooctane 73.0 % 28.3-164

Surrogate: 1-Chlorooctadecane 77.2 % 34.7-157

Cardinal Laboratories

\*=Accredited Analyte

PLEASE NOTE: Liability and Damages. Cardinal's liability and client's exclusive remedy for any claim arising, whether based in contract or tort, shall be limited to the amount paid by client for analyses. All claims, including those for negligence and any other cause whatsoever shall be deemed waived unless made in writing and received by Cardinal within thirty (30) days after completion of the applicable service. In no event shall Cardinal be liable for incidental or consequential damages, including, without limitation, business interruptions, loss of use, or loss of profits incurred by client, its subsidiaries, affiliates or successors arising out of or related to the performance of the services hereunder by Cardinal, regardless of whether such claim is based upon any of the above stated reasons or otherwise. Results relate only to the samples identified above. This report shall not be reproduced except in full with written approval of Cardinal Laboratories.



Celey D. Keene, Lab Director/Quality Manager



**Analytical Results For:**

BBC International, Inc.  
Cliff Brunson  
P.O. Box 805  
Hobbs NM, 88241  
Fax To: (575) 397-0397

Received:	09/22/2017	Sampling Date:	09/20/2017
Reported:	09/29/2017	Sampling Type:	Soil
Project Name:	CEDAR CANYON 29 FED COM #3H	Sampling Condition:	Cool & Intact
Project Number:	NONE GIVEN	Sample Received By:	Tamara Oldaker
Project Location:	EDDY COUNTY		

**Sample ID: SP 8 @ 6 (H702583-49)**

BTX 8021B		mg/kg		Analyzed By: MS						
Analyte	Result	Reporting Limit	Analyzed	Method Blank	BS	% Recovery	True Value QC	RPD	Qualifier	
Benzene*	<0.050	0.050	09/28/2017	ND	2.02	101	2.00	0.960		
Toluene*	<0.050	0.050	09/28/2017	ND	1.83	91.5	2.00	1.28		
Ethylbenzene*	<0.050	0.050	09/28/2017	ND	1.87	93.7	2.00	0.0696		
Total Xylenes*	<0.150	0.150	09/28/2017	ND	5.68	94.7	6.00	0.269		
Total BTX	<0.300	0.300	09/28/2017	ND						

Surrogate: 4-Bromofluorobenzene (PID) 104 % 72-148

Chloride, SM4500Cl-B		mg/kg		Analyzed By: AC					
Analyte	Result	Reporting Limit	Analyzed	Method Blank	BS	% Recovery	True Value QC	RPD	Qualifier
Chloride	224	16.0	09/26/2017	ND	416	104	400	0.00	

TPH 8015M		mg/kg		Analyzed By: MS					
Analyte	Result	Reporting Limit	Analyzed	Method Blank	BS	% Recovery	True Value QC	RPD	Qualifier
GRO C6-C10	<10.0	10.0	09/25/2017	ND	181	90.6	200	1.81	
DRO >C10-C28	<10.0	10.0	09/25/2017	ND	198	99.0	200	1.73	
EXT DRO >C28-C36	<10.0	10.0	09/25/2017	ND					

Surrogate: 1-Chlorooctane 77.9 % 28.3-164

Surrogate: 1-Chlorooctadecane 84.0 % 34.7-157

Cardinal Laboratories

\*=Accredited Analyte

PLEASE NOTE: Liability and Damages. Cardinal's liability and client's exclusive remedy for any claim arising, whether based in contract or tort, shall be limited to the amount paid by client for analyses. All claims, including those for negligence and any other cause whatsoever shall be deemed waived unless made in writing and received by Cardinal within thirty (30) days after completion of the applicable service. In no event shall Cardinal be liable for incidental or consequential damages, including, without limitation, business interruptions, loss of use, or loss of profits incurred by client, its subsidiaries, affiliates or successors arising out of or related to the performance of the services hereunder by Cardinal, regardless of whether such claim is based upon any of the above stated reasons or otherwise. Results relate only to the samples identified above. This report shall not be reproduced except in full with written approval of Cardinal Laboratories.



Celey D. Keene, Lab Director/Quality Manager

**Analytical Results For:**

BBC International, Inc.  
Cliff Brunson  
P.O. Box 805  
Hobbs NM, 88241  
Fax To: (575) 397-0397

Received:	09/22/2017	Sampling Date:	09/20/2017
Reported:	09/29/2017	Sampling Type:	Soil
Project Name:	CEDAR CANYON 29 FED COM #3H	Sampling Condition:	Cool & Intact
Project Number:	NONE GIVEN	Sample Received By:	Tamara Oldaker
Project Location:	EDDY COUNTY		

**Sample ID: SP 8 @ 11 (H702583-50)**

BTX 8021B		mg/kg		Analyzed By: MS						
Analyte	Result	Reporting Limit	Analyzed	Method Blank	BS	% Recovery	True Value QC	RPD	Qualifier	
Benzene*	<0.050	0.050	09/28/2017	ND	2.02	101	2.00	0.960		
Toluene*	<0.050	0.050	09/28/2017	ND	1.83	91.5	2.00	1.28		
Ethylbenzene*	<0.050	0.050	09/28/2017	ND	1.87	93.7	2.00	0.0696		
Total Xylenes*	<0.150	0.150	09/28/2017	ND	5.68	94.7	6.00	0.269		
Total BTX	<0.300	0.300	09/28/2017	ND						

Surrogate: 4-Bromofluorobenzene (PID) 103 % 72-148

Chloride, SM4500Cl-B		mg/kg		Analyzed By: AC					
Analyte	Result	Reporting Limit	Analyzed	Method Blank	BS	% Recovery	True Value QC	RPD	Qualifier
Chloride	368	16.0	09/26/2017	ND	416	104	400	0.00	

TPH 8015M		mg/kg		Analyzed By: MS					
Analyte	Result	Reporting Limit	Analyzed	Method Blank	BS	% Recovery	True Value QC	RPD	Qualifier
GRO C6-C10	<10.0	10.0	09/25/2017	ND	181	90.6	200	1.81	
DRO >C10-C28	<10.0	10.0	09/25/2017	ND	198	99.0	200	1.73	
EXT DRO >C28-C36	<10.0	10.0	09/25/2017	ND					

Surrogate: 1-Chlorooctane 73.4 % 28.3-164

Surrogate: 1-Chlorooctadecane 77.2 % 34.7-157

Cardinal Laboratories

\*=Accredited Analyte

PLEASE NOTE: Liability and Damages. Cardinal's liability and client's exclusive remedy for any claim arising, whether based in contract or tort, shall be limited to the amount paid by client for analyses. All claims, including those for negligence and any other cause whatsoever shall be deemed waived unless made in writing and received by Cardinal within thirty (30) days after completion of the applicable service. In no event shall Cardinal be liable for incidental or consequential damages, including, without limitation, business interruptions, loss of use, or loss of profits incurred by client, its subsidiaries, affiliates or successors arising out of or related to the performance of the services hereunder by Cardinal, regardless of whether such claim is based upon any of the above stated reasons or otherwise. Results relate only to the samples identified above. This report shall not be reproduced except in full with written approval of Cardinal Laboratories.



Celey D. Keene, Lab Director/Quality Manager

**Analytical Results For:**

BBC International, Inc.  
Cliff Brunson  
P.O. Box 805  
Hobbs NM, 88241  
Fax To: (575) 397-0397

Received:	09/22/2017	Sampling Date:	09/20/2017
Reported:	09/29/2017	Sampling Type:	Soil
Project Name:	CEDAR CANYON 29 FED COM #3H	Sampling Condition:	Cool & Intact
Project Number:	NONE GIVEN	Sample Received By:	Tamara Oldaker
Project Location:	EDDY COUNTY		

**Sample ID: SP 9 @ 1 (H702583-51)**

BTX 8021B		mg/kg		Analyzed By: MS						
Analyte	Result	Reporting Limit	Analyzed	Method Blank	BS	% Recovery	True Value QC	RPD	Qualifier	
Benzene*	<0.050	0.050	09/28/2017	ND	2.02	101	2.00	0.960		
Toluene*	<0.050	0.050	09/28/2017	ND	1.83	91.5	2.00	1.28		
Ethylbenzene*	<0.050	0.050	09/28/2017	ND	1.87	93.7	2.00	0.0696		
Total Xylenes*	<0.150	0.150	09/28/2017	ND	5.68	94.7	6.00	0.269		
Total BTX	<0.300	0.300	09/28/2017	ND						

Surrogate: 4-Bromofluorobenzene (PID) 106 % 72-148

Chloride, SM4500Cl-B		mg/kg		Analyzed By: AC					
Analyte	Result	Reporting Limit	Analyzed	Method Blank	BS	% Recovery	True Value QC	RPD	Qualifier
Chloride	432	16.0	09/26/2017	ND	416	104	400	0.00	

TPH 8015M		mg/kg		Analyzed By: MS					
Analyte	Result	Reporting Limit	Analyzed	Method Blank	BS	% Recovery	True Value QC	RPD	Qualifier
GRO C6-C10	<10.0	10.0	09/25/2017	ND	181	90.6	200	1.81	
DRO >C10-C28	1090	10.0	09/25/2017	ND	198	99.0	200	1.73	
EXT DRO >C28-C36	224	10.0	09/25/2017	ND					

Surrogate: 1-Chlorooctane 78.6 % 28.3-164

Surrogate: 1-Chlorooctadecane 92.4 % 34.7-157

Cardinal Laboratories

\*=Accredited Analyte

PLEASE NOTE: Liability and Damages. Cardinal's liability and client's exclusive remedy for any claim arising, whether based in contract or tort, shall be limited to the amount paid by client for analyses. All claims, including those for negligence and any other cause whatsoever shall be deemed waived unless made in writing and received by Cardinal within thirty (30) days after completion of the applicable service. In no event shall Cardinal be liable for incidental or consequential damages, including, without limitation, business interruptions, loss of use, or loss of profits incurred by client, its subsidiaries, affiliates or successors arising out of or related to the performance of the services hereunder by Cardinal, regardless of whether such claim is based upon any of the above stated reasons or otherwise. Results relate only to the samples identified above. This report shall not be reproduced except in full with written approval of Cardinal Laboratories.



Celey D. Keene, Lab Director/Quality Manager

**Analytical Results For:**

 BBC International, Inc.  
 Cliff Brunson  
 P.O. Box 805  
 Hobbs NM, 88241  
 Fax To: (575) 397-0397

Received:	09/22/2017	Sampling Date:	09/20/2017
Reported:	09/29/2017	Sampling Type:	Soil
Project Name:	CEDAR CANYON 29 FED COM #3H	Sampling Condition:	Cool & Intact
Project Number:	NONE GIVEN	Sample Received By:	Tamara Oldaker
Project Location:	EDDY COUNTY		

**Sample ID: SP 9 @ 2 (H702583-52)**

Chloride, SM4500Cl-B		mg/kg		Analyzed By: AC					
Analyte	Result	Reporting Limit	Analyzed	Method Blank	BS	% Recovery	True Value QC	RPD	Qualifier
Chloride	1620	16.0	09/26/2017	ND	416	104	400	0.00	

Cardinal Laboratories

\*=Accredited Analyte

PLEASE NOTE: Liability and Damages. Cardinal's liability and client's exclusive remedy for any claim arising, whether based in contract or tort, shall be limited to the amount paid by client for analyses. All claims, including those for negligence and any other cause whatsoever shall be deemed waived unless made in writing and received by Cardinal within thirty (30) days after completion of the applicable service. In no event shall Cardinal be liable for incidental or consequential damages, including, without limitation, business interruptions, loss of use, or loss of profits incurred by client, its subsidiaries, affiliates or successors arising out of or related to the performance of the services hereunder by Cardinal, regardless of whether such claim is based upon any of the above stated reasons or otherwise. Results relate only to the samples identified above. This report shall not be reproduced except in full with written approval of Cardinal Laboratories.



Celey D. Keene, Lab Director/Quality Manager

**Analytical Results For:**

BBC International, Inc.  
Cliff Brunson  
P.O. Box 805  
Hobbs NM, 88241  
Fax To: (575) 397-0397

Received:	09/22/2017	Sampling Date:	09/20/2017
Reported:	09/29/2017	Sampling Type:	Soil
Project Name:	CEDAR CANYON 29 FED COM #3H	Sampling Condition:	Cool & Intact
Project Number:	NONE GIVEN	Sample Received By:	Tamara Oldaker
Project Location:	EDDY COUNTY		

**Sample ID: SP 9 @ 4 (H702583-53)**

BTX 8021B		mg/kg		Analyzed By: MS						
Analyte	Result	Reporting Limit	Analyzed	Method Blank	BS	% Recovery	True Value QC	RPD	Qualifier	
Benzene*	<0.050	0.050	09/28/2017	ND	2.02	101	2.00	0.960		
Toluene*	<0.050	0.050	09/28/2017	ND	1.83	91.5	2.00	1.28		
Ethylbenzene*	<0.050	0.050	09/28/2017	ND	1.87	93.7	2.00	0.0696		
Total Xylenes*	<0.150	0.150	09/28/2017	ND	5.68	94.7	6.00	0.269		
Total BTX	<0.300	0.300	09/28/2017	ND						

Surrogate: 4-Bromofluorobenzene (PID) 111 % 72-148

Chloride, SM4500Cl-B		mg/kg		Analyzed By: AC					
Analyte	Result	Reporting Limit	Analyzed	Method Blank	BS	% Recovery	True Value QC	RPD	Qualifier
Chloride	784	16.0	09/26/2017	ND	416	104	400	0.00	

TPH 8015M		mg/kg		Analyzed By: MS					
Analyte	Result	Reporting Limit	Analyzed	Method Blank	BS	% Recovery	True Value QC	RPD	Qualifier
GRO C6-C10	<10.0	10.0	09/25/2017	ND	181	90.6	200	1.81	
DRO >C10-C28	<10.0	10.0	09/25/2017	ND	198	99.0	200	1.73	
EXT DRO >C28-C36	11.4	10.0	09/25/2017	ND					

Surrogate: 1-Chlorooctane 81.3 % 28.3-164

Surrogate: 1-Chlorooctadecane 84.6 % 34.7-157

Cardinal Laboratories

\*=Accredited Analyte

PLEASE NOTE: Liability and Damages. Cardinal's liability and client's exclusive remedy for any claim arising, whether based in contract or tort, shall be limited to the amount paid by client for analyses. All claims, including those for negligence and any other cause whatsoever shall be deemed waived unless made in writing and received by Cardinal within thirty (30) days after completion of the applicable service. In no event shall Cardinal be liable for incidental or consequential damages, including, without limitation, business interruptions, loss of use, or loss of profits incurred by client, its subsidiaries, affiliates or successors arising out of or related to the performance of the services hereunder by Cardinal, regardless of whether such claim is based upon any of the above stated reasons or otherwise. Results relate only to the samples identified above. This report shall not be reproduced except in full with written approval of Cardinal Laboratories.



Celey D. Keene, Lab Director/Quality Manager

**Analytical Results For:**

BBC International, Inc.  
Cliff Brunson  
P.O. Box 805  
Hobbs NM, 88241  
Fax To: (575) 397-0397

Received:	09/22/2017	Sampling Date:	09/20/2017
Reported:	09/29/2017	Sampling Type:	Soil
Project Name:	CEDAR CANYON 29 FED COM #3H	Sampling Condition:	Cool & Intact
Project Number:	NONE GIVEN	Sample Received By:	Tamara Oldaker
Project Location:	EDDY COUNTY		

**Sample ID: SP 9 @ 6 (H702583-54)**

BTX 8021B		mg/kg		Analyzed By: MS						
Analyte	Result	Reporting Limit	Analyzed	Method Blank	BS	% Recovery	True Value QC	RPD	Qualifier	
Benzene*	<0.050	0.050	09/28/2017	ND	2.02	101	2.00	0.960		
Toluene*	<0.050	0.050	09/28/2017	ND	1.83	91.5	2.00	1.28		
Ethylbenzene*	<0.050	0.050	09/28/2017	ND	1.87	93.7	2.00	0.0696		
Total Xylenes*	<0.150	0.150	09/28/2017	ND	5.68	94.7	6.00	0.269		
Total BTX	<0.300	0.300	09/28/2017	ND						

Surrogate: 4-Bromofluorobenzene (PID) 105 % 72-148

Chloride, SM4500Cl-B		mg/kg		Analyzed By: AC						
Analyte	Result	Reporting Limit	Analyzed	Method Blank	BS	% Recovery	True Value QC	RPD	Qualifier	
Chloride	752	16.0	09/26/2017	ND	416	104	400	0.00		

TPH 8015M		mg/kg		Analyzed By: MS					
Analyte	Result	Reporting Limit	Analyzed	Method Blank	BS	% Recovery	True Value QC	RPD	Qualifier
GRO C6-C10	<10.0	10.0	09/25/2017	ND	181	90.6	200	1.81	
DRO >C10-C28	<10.0	10.0	09/25/2017	ND	198	99.0	200	1.73	
EXT DRO >C28-C36	<10.0	10.0	09/25/2017	ND					

Surrogate: 1-Chlorooctane 80.1 % 28.3-164

Surrogate: 1-Chlorooctadecane 79.3 % 34.7-157

Cardinal Laboratories

\*=Accredited Analyte

PLEASE NOTE: Liability and Damages. Cardinal's liability and client's exclusive remedy for any claim arising, whether based in contract or tort, shall be limited to the amount paid by client for analyses. All claims, including those for negligence and any other cause whatsoever shall be deemed waived unless made in writing and received by Cardinal within thirty (30) days after completion of the applicable service. In no event shall Cardinal be liable for incidental or consequential damages, including, without limitation, business interruptions, loss of use, or loss of profits incurred by client, its subsidiaries, affiliates or successors arising out of or related to the performance of the services hereunder by Cardinal, regardless of whether such claim is based upon any of the above stated reasons or otherwise. Results relate only to the samples identified above. This report shall not be reproduced except in full with written approval of Cardinal Laboratories.



Celey D. Keene, Lab Director/Quality Manager

**Analytical Results For:**

BBC International, Inc.  
Cliff Brunson  
P.O. Box 805  
Hobbs NM, 88241  
Fax To: (575) 397-0397

Received:	09/22/2017	Sampling Date:	09/20/2017
Reported:	09/29/2017	Sampling Type:	Soil
Project Name:	CEDAR CANYON 29 FED COM #3H	Sampling Condition:	Cool & Intact
Project Number:	NONE GIVEN	Sample Received By:	Tamara Oldaker
Project Location:	EDDY COUNTY		

**Sample ID: SP 9 @ 7 (H702583-55)**

Chloride, SM4500Cl-B		mg/kg		Analyzed By: AC					
Analyte	Result	Reporting Limit	Analyzed	Method Blank	BS	% Recovery	True Value QC	RPD	Qualifier
Chloride	240	16.0	09/26/2017	ND	416	104	400	0.00	

**Sample ID: SP 9 @ 12 (H702583-56)**

Chloride, SM4500Cl-B		mg/kg		Analyzed By: AC					
Analyte	Result	Reporting Limit	Analyzed	Method Blank	BS	% Recovery	True Value QC	RPD	Qualifier
Chloride	304	16.0	09/26/2017	ND	416	104	400	0.00	

Cardinal Laboratories

\*=Accredited Analyte

PLEASE NOTE: Liability and Damages. Cardinal's liability and client's exclusive remedy for any claim arising, whether based in contract or tort, shall be limited to the amount paid by client for analyses. All claims, including those for negligence and any other cause whatsoever shall be deemed waived unless made in writing and received by Cardinal within thirty (30) days after completion of the applicable service. In no event shall Cardinal be liable for incidental or consequential damages, including, without limitation, business interruptions, loss of use, or loss of profits incurred by client, its subsidiaries, affiliates or successors arising out of or related to the performance of the services hereunder by Cardinal, regardless of whether such claim is based upon any of the above stated reasons or otherwise. Results relate only to the samples identified above. This report shall not be reproduced except in full with written approval of Cardinal Laboratories.



Celey D. Keene, Lab Director/Quality Manager



**Analytical Results For:**

BBC International, Inc.  
Cliff Brunson  
P.O. Box 805  
Hobbs NM, 88241  
Fax To: (575) 397-0397

Received:	09/22/2017	Sampling Date:	09/20/2017
Reported:	09/29/2017	Sampling Type:	Soil
Project Name:	CEDAR CANYON 29 FED COM #3H	Sampling Condition:	Cool & Intact
Project Number:	NONE GIVEN	Sample Received By:	Tamara Oldaker
Project Location:	EDDY COUNTY		

**Sample ID: SP 9 @ 17 (H702583-57)**

BTEx 8021B		mg/kg		Analyzed By: MS						
Analyte	Result	Reporting Limit	Analyzed	Method Blank	BS	% Recovery	True Value QC	RPD	Qualifier	
Benzene*	<0.050	0.050	09/28/2017	ND	2.02	101	2.00	0.960		
Toluene*	<0.050	0.050	09/28/2017	ND	1.83	91.5	2.00	1.28		
Ethylbenzene*	<0.050	0.050	09/28/2017	ND	1.87	93.7	2.00	0.0696		
Total Xylenes*	<0.150	0.150	09/28/2017	ND	5.68	94.7	6.00	0.269		
Total BTEx	<0.300	0.300	09/28/2017	ND						

Surrogate: 4-Bromofluorobenzene (PID) 104 % 72-148

Chloride, SM4500CI-B		mg/kg		Analyzed By: AC						
Analyte	Result	Reporting Limit	Analyzed	Method Blank	BS	% Recovery	True Value QC	RPD	Qualifier	
Chloride	336	16.0	09/26/2017	ND	416	104	400	0.00		

TPH 8015M		mg/kg		Analyzed By: MS					
Analyte	Result	Reporting Limit	Analyzed	Method Blank	BS	% Recovery	True Value QC	RPD	Qualifier
GRO C6-C10	<10.0	10.0	09/25/2017	ND	181	90.6	200	1.81	
DRO >C10-C28	<10.0	10.0	09/25/2017	ND	198	99.0	200	1.73	
EXT DRO >C28-C36	<10.0	10.0	09/25/2017	ND					

Surrogate: 1-Chlorooctane 81.3 % 28.3-164

Surrogate: 1-Chlorooctadecane 83.2 % 34.7-157

Cardinal Laboratories

\*=Accredited Analyte

PLEASE NOTE: Liability and Damages. Cardinal's liability and client's exclusive remedy for any claim arising, whether based in contract or tort, shall be limited to the amount paid by client for analyses. All claims, including those for negligence and any other cause whatsoever shall be deemed waived unless made in writing and received by Cardinal within thirty (30) days after completion of the applicable service. In no event shall Cardinal be liable for incidental or consequential damages, including, without limitation, business interruptions, loss of use, or loss of profits incurred by client, its subsidiaries, affiliates or successors arising out of or related to the performance of the services hereunder by Cardinal, regardless of whether such claim is based upon any of the above stated reasons or otherwise. Results relate only to the samples identified above. This report shall not be reproduced except in full with written approval of Cardinal Laboratories.



Celey D. Keene, Lab Director/Quality Manager

**Analytical Results For:**

 BBC International, Inc.  
 Cliff Brunson  
 P.O. Box 805  
 Hobbs NM, 88241  
 Fax To: (575) 397-0397

Received:	09/22/2017	Sampling Date:	09/20/2017
Reported:	09/29/2017	Sampling Type:	Soil
Project Name:	CEDAR CANYON 29 FED COM #3H	Sampling Condition:	Cool & Intact
Project Number:	NONE GIVEN	Sample Received By:	Tamara Oldaker
Project Location:	EDDY COUNTY		

**Sample ID: NORTH @ SURFACE (H702583-58)**

BTX 8021B		mg/kg		Analyzed By: MS					
Analyte	Result	Reporting Limit	Analyzed	Method Blank	BS	% Recovery	True Value QC	RPD	Qualifier
Benzene*	<0.050	0.050	09/28/2017	ND	2.02	101	2.00		
Toluene*	<0.050	0.050	09/28/2017	ND	1.86	92.9	2.00		
Ethylbenzene*	<0.050	0.050	09/28/2017	ND	1.89	94.3	2.00		
Total Xylenes*	<0.150	0.150	09/28/2017	ND	5.72	95.3	6.00		
Total BTX	<0.300	0.300	09/28/2017	ND					

Surrogate: 4-Bromofluorobenzene (PID) 103 % 72-148

Chloride, SM4500Cl-B		mg/kg		Analyzed By: AC					
Analyte	Result	Reporting Limit	Analyzed	Method Blank	BS	% Recovery	True Value QC	RPD	Qualifier
Chloride	32.0	16.0	09/26/2017	ND	416	104	400	0.00	

TPH 8015M		mg/kg		Analyzed By: MS					
Analyte	Result	Reporting Limit	Analyzed	Method Blank	BS	% Recovery	True Value QC	RPD	Qualifier
GRO C6-C10	<10.0	10.0	09/25/2017	ND	181	90.6	200	1.81	
DRO >C10-C28	<10.0	10.0	09/25/2017	ND	198	99.0	200	1.73	
EXT DRO >C28-C36	<10.0	10.0	09/25/2017	ND					

Surrogate: 1-Chlorooctane 69.7 % 28.3-164

Surrogate: 1-Chlorooctadecane 69.9 % 34.7-157

Cardinal Laboratories

\*=Accredited Analyte

PLEASE NOTE: Liability and Damages. Cardinal's liability and client's exclusive remedy for any claim arising, whether based in contract or tort, shall be limited to the amount paid by client for analyses. All claims, including those for negligence and any other cause whatsoever shall be deemed waived unless made in writing and received by Cardinal within thirty (30) days after completion of the applicable service. In no event shall Cardinal be liable for incidental or consequential damages, including, without limitation, business interruptions, loss of use, or loss of profits incurred by client, its subsidiaries, affiliates or successors arising out of or related to the performance of the services hereunder by Cardinal, regardless of whether such claim is based upon any of the above stated reasons or otherwise. Results relate only to the samples identified above. This report shall not be reproduced except in full with written approval of Cardinal Laboratories.



Celey D. Keene, Lab Director/Quality Manager

**Analytical Results For:**

BBC International, Inc.  
Cliff Brunson  
P.O. Box 805  
Hobbs NM, 88241  
Fax To: (575) 397-0397

Received:	09/22/2017	Sampling Date:	09/20/2017
Reported:	09/29/2017	Sampling Type:	Soil
Project Name:	CEDAR CANYON 29 FED COM #3H	Sampling Condition:	Cool & Intact
Project Number:	NONE GIVEN	Sample Received By:	Tamara Oldaker
Project Location:	EDDY COUNTY		

**Sample ID: EAST @ SURFACE (H702583-59)**

BTX 8021B		mg/kg		Analyzed By: MS					
Analyte	Result	Reporting Limit	Analyzed	Method Blank	BS	% Recovery	True Value QC	RPD	Qualifier
Benzene*	<0.050	0.050	09/28/2017	ND	2.02	101	2.00		
Toluene*	<0.050	0.050	09/28/2017	ND	1.86	92.9	2.00		
Ethylbenzene*	<0.050	0.050	09/28/2017	ND	1.89	94.3	2.00		
Total Xylenes*	<0.150	0.150	09/28/2017	ND	5.72	95.3	6.00		
Total BTX	<0.300	0.300	09/28/2017	ND					

Surrogate: 4-Bromofluorobenzene (PID) 103 % 72-148

Chloride, SM4500Cl-B		mg/kg		Analyzed By: AC						
Analyte	Result	Reporting Limit	Analyzed	Method Blank	BS	% Recovery	True Value QC	RPD	Qualifier	
Chloride	32.0	16.0	09/26/2017	ND	416	104	400	0.00		

TPH 8015M		mg/kg		Analyzed By: MS					
Analyte	Result	Reporting Limit	Analyzed	Method Blank	BS	% Recovery	True Value QC	RPD	Qualifier
GRO C6-C10	<10.0	10.0	09/25/2017	ND	181	90.6	200	1.81	
DRO >C10-C28	<10.0	10.0	09/25/2017	ND	198	99.0	200	1.73	
EXT DRO >C28-C36	<10.0	10.0	09/25/2017	ND					

Surrogate: 1-Chlorooctane 73.1 % 28.3-164

Surrogate: 1-Chlorooctadecane 73.2 % 34.7-157

Cardinal Laboratories

\*=Accredited Analyte

PLEASE NOTE: Liability and Damages. Cardinal's liability and client's exclusive remedy for any claim arising, whether based in contract or tort, shall be limited to the amount paid by client for analyses. All claims, including those for negligence and any other cause whatsoever shall be deemed waived unless made in writing and received by Cardinal within thirty (30) days after completion of the applicable service. In no event shall Cardinal be liable for incidental or consequential damages, including, without limitation, business interruptions, loss of use, or loss of profits incurred by client, its subsidiaries, affiliates or successors arising out of or related to the performance of the services hereunder by Cardinal, regardless of whether such claim is based upon any of the above stated reasons or otherwise. Results relate only to the samples identified above. This report shall not be reproduced except in full with written approval of Cardinal Laboratories.



Celey D. Keene, Lab Director/Quality Manager

**Analytical Results For:**

BBC International, Inc.  
Cliff Brunson  
P.O. Box 805  
Hobbs NM, 88241  
Fax To: (575) 397-0397

Received:	09/22/2017	Sampling Date:	09/20/2017
Reported:	09/29/2017	Sampling Type:	Soil
Project Name:	CEDAR CANYON 29 FED COM #3H	Sampling Condition:	Cool & Intact
Project Number:	NONE GIVEN	Sample Received By:	Tamara Oldaker
Project Location:	EDDY COUNTY		

**Sample ID: WEST @ SURFACE (H702583-60)**

BTEx 8021B		mg/kg		Analyzed By: MS					
Analyte	Result	Reporting Limit	Analyzed	Method Blank	BS	% Recovery	True Value QC	RPD	Qualifier
Benzene*	<0.050	0.050	09/28/2017	ND	2.02	101	2.00		
Toluene*	<0.050	0.050	09/28/2017	ND	1.86	92.9	2.00		
Ethylbenzene*	<0.050	0.050	09/28/2017	ND	1.89	94.3	2.00		
Total Xylenes*	<0.150	0.150	09/28/2017	ND	5.72	95.3	6.00		
Total BTEx	<0.300	0.300	09/28/2017	ND					

Surrogate: 4-Bromofluorobenzene (PID) 104 % 72-148

Chloride, SM4500Cl-B		mg/kg		Analyzed By: AC					
Analyte	Result	Reporting Limit	Analyzed	Method Blank	BS	% Recovery	True Value QC	RPD	Qualifier
Chloride	48.0	16.0	09/26/2017	ND	416	104	400	0.00	

TPH 8015M		mg/kg		Analyzed By: MS					
Analyte	Result	Reporting Limit	Analyzed	Method Blank	BS	% Recovery	True Value QC	RPD	Qualifier
GRO C6-C10	<10.0	10.0	09/25/2017	ND	181	90.6	200	1.81	
DRO >C10-C28	<10.0	10.0	09/25/2017	ND	198	99.0	200	1.73	
EXT DRO >C28-C36	<10.0	10.0	09/25/2017	ND					

Surrogate: 1-Chlorooctane 70.1 % 28.3-164

Surrogate: 1-Chlorooctadecane 70.3 % 34.7-157

Cardinal Laboratories

\*=Accredited Analyte

PLEASE NOTE: Liability and Damages. Cardinal's liability and client's exclusive remedy for any claim arising, whether based in contract or tort, shall be limited to the amount paid by client for analyses. All claims, including those for negligence and any other cause whatsoever shall be deemed waived unless made in writing and received by Cardinal within thirty (30) days after completion of the applicable service. In no event shall Cardinal be liable for incidental or consequential damages, including, without limitation, business interruptions, loss of use, or loss of profits incurred by client, its subsidiaries, affiliates or successors arising out of or related to the performance of the services hereunder by Cardinal, regardless of whether such claim is based upon any of the above stated reasons or otherwise. Results relate only to the samples identified above. This report shall not be reproduced except in full with written approval of Cardinal Laboratories.



Celey D. Keene, Lab Director/Quality Manager

**Analytical Results For:**

BBC International, Inc.  
Cliff Brunson  
P.O. Box 805  
Hobbs NM, 88241  
Fax To: (575) 397-0397

Received:	09/22/2017	Sampling Date:	09/20/2017
Reported:	09/29/2017	Sampling Type:	Soil
Project Name:	CEDAR CANYON 29 FED COM #3H	Sampling Condition:	Cool & Intact
Project Number:	NONE GIVEN	Sample Received By:	Tamara Oldaker
Project Location:	EDDY COUNTY		

**Sample ID: SOUTH @ SURFACE (H702583-61)**

BTEx 8021B		mg/kg		Analyzed By: MS					
Analyte	Result	Reporting Limit	Analyzed	Method Blank	BS	% Recovery	True Value QC	RPD	Qualifier
Benzene*	<0.050	0.050	09/28/2017	ND	2.02	101	2.00		
Toluene*	<0.050	0.050	09/28/2017	ND	1.86	92.9	2.00		
Ethylbenzene*	<0.050	0.050	09/28/2017	ND	1.89	94.3	2.00		
Total Xylenes*	<0.150	0.150	09/28/2017	ND	5.72	95.3	6.00		
Total BTEx	<0.300	0.300	09/28/2017	ND					

Surrogate: 4-Bromofluorobenzene (PID) 103 % 72-148

Chloride, SM4500CI-B		mg/kg		Analyzed By: AC					
Analyte	Result	Reporting Limit	Analyzed	Method Blank	BS	% Recovery	True Value QC	RPD	Qualifier
Chloride	16.0	16.0	09/26/2017	ND	400	100	400	3.92	

TPH 8015M		mg/kg		Analyzed By: MS					
Analyte	Result	Reporting Limit	Analyzed	Method Blank	BS	% Recovery	True Value QC	RPD	Qualifier
GRO C6-C10	<10.0	10.0	09/25/2017	ND	181	90.6	200	1.81	
DRO >C10-C28	<10.0	10.0	09/25/2017	ND	198	99.0	200	1.73	
EXT DRO >C28-C36	<10.0	10.0	09/25/2017	ND					

Surrogate: 1-Chlorooctane 73.3 % 28.3-164

Surrogate: 1-Chlorooctadecane 73.9 % 34.7-157

Cardinal Laboratories

\*=Accredited Analyte

PLEASE NOTE: Liability and Damages. Cardinal's liability and client's exclusive remedy for any claim arising, whether based in contract or tort, shall be limited to the amount paid by client for analyses. All claims, including those for negligence and any other cause whatsoever shall be deemed waived unless made in writing and received by Cardinal within thirty (30) days after completion of the applicable service. In no event shall Cardinal be liable for incidental or consequential damages, including, without limitation, business interruptions, loss of use, or loss of profits incurred by client, its subsidiaries, affiliates or successors arising out of or related to the performance of the services hereunder by Cardinal, regardless of whether such claim is based upon any of the above stated reasons or otherwise. Results relate only to the samples identified above. This report shall not be reproduced except in full with written approval of Cardinal Laboratories.



Celey D. Keene, Lab Director/Quality Manager

### Notes and Definitions

QM-07	The spike recovery was outside acceptance limits for the MS and/or MSD. The batch was accepted based on acceptable LCS recovery.
ND	Analyte NOT DETECTED at or above the reporting limit
RPD	Relative Percent Difference
**	Samples not received at proper temperature of 6°C or below.
***	Insufficient time to reach temperature.
-	Chloride by SM4500Cl-B does not require samples be received at or below 6°C Samples reported on an as received basis (wet) unless otherwise noted on report

---

Cardinal Laboratories

\*=Accredited Analyte

PLEASE NOTE: Liability and Damages. Cardinal's liability and client's exclusive remedy for any claim arising, whether based in contract or tort, shall be limited to the amount paid by client for analyses. All claims, including those for negligence and any other cause whatsoever shall be deemed waived unless made in writing and received by Cardinal within thirty (30) days after completion of the applicable service. In no event shall Cardinal be liable for incidental or consequential damages, including, without limitation, business interruptions, loss of use, or loss of profits incurred by client, its subsidiaries, affiliates or successors arising out of or related to the performance of the services hereunder by Cardinal, regardless of whether such claim is based upon any of the above stated reasons or otherwise. Results relate only to the samples identified above. This report shall not be reproduced except in full with written approval of Cardinal Laboratories.



---

Celey D. Keene, Lab Director/Quality Manager





# ARDINAL LABORATORIES

101 East Marland, Hobbs, NM 88240  
(505) 393-2326 FAX (505) 393-2476

## CHAIN-OF-CUSTODY AND ANALYSIS REQUEST

Company Name: BBC International, Inc.

Project Manager: Cliff Brunson

Address: P.O. Box 805

City: Hobbs

Phone #: 575-397-6388

Project #:

Project Name: Cedar Canyon 29 Fed Com #34

Project Location: Eddy County

Sampler Name: JEF Ornelas

FOR LAB USE ONLY

Lab I.D.

Sample I.D.

### BILL TO

### ANALYSIS REQUEST

P.O. #:

Company: *Ornelas*

Attn: *D. Ornelas*

Address:

City:

State:

Phone #:

Fax #:

Zip:

MATRIX

GROUNDWATER

WASTEWATER

SOIL

OIL

SLUDGE

OTHER :

ACID/BASE:

ICE / COOL

OTHER :

DATE

TIME

CI

B7+x

TPH Ext

REMARKS:

Phone Result: ☐ Yes ☐ No

Fax Result: ☐ Yes ☐ No

Add'l Phone #:

Add'l Fax #:





ARDINAL LABORATORIES

101 East Marland, Hobbs, NM 88240  
(505) 393-2326 FAX (505) 393-2476

CHAIN-OF-CUSTODY AND ANALYSIS REQUEST

BILL TO

ANALYSIS REQUEST

Company Name: BBC International, Inc.  
Project Manager: Cliff Brunson

Address: P.O. Box 805  
City: Hobbs

State: NM Zip: 88241  
Phone #: 575-397-6388 Fax #: 575-397-0397

Project #: Project Owner: Oxy

Project Name: Cedar Canyon 29 Fed Con #34

Project Location: Eddy County

Sample Name: 246 gravel

P.O. #: Company: Oxy  
Attn: Patrick

Address: City: State: Zip:

Phone #: Fax #:

PRESERV SAMPLING

Lab I.D. Sample I.D.

Table with columns: Lab I.D., Sample I.D., (G)RAB OR (C)OMP, # CONTAINERS, MATRIX (GROUNDWATER, WASTEWATER, SOIL, OIL, SLUDGE, OTHER), ACID/BASE, ICE / COOL, OTHER, DATE, TIME, and analysis results (CI, BTEX, TPH, etc.).

PLEASE NOTE: Liability and Damages: Cardinal's liability and client's exclusive remedy for any claim arising whether based in contract or tort, shall be limited to the amount paid by the client for the analyses. All claims including those for negligence and any other cause whatsoever shall be deemed waived unless made in writing and received by Cardinal within 30 days after completion of the applicable service. In no event shall Cardinal be liable for incidental or consequential damages, including without limitation, business interruption, loss of use, or loss of profits incurred by client, its subsidiaries, affiliates or successors arising out of or related to the performance of services hereunder by Cardinal. Regardless of whether such claim is based upon any of the above stated reasons or otherwise.

Administrative section including: Relinquished By, Received By, Delivered By, Sample Condition (Cool, Intact), and checkboxes for Yes/No.

† Cardinal cannot accept verbal changes. Please fax written changes to 505-393-2476

## ORDINAL LABORATORIES

101 East Marland, Hobbs, NM 88240  
(505) 393-2326 FAX (505) 393-2476

### CHAIN-OF-CUSTODY AND ANALYSIS REQUEST

[illegible]



## ORDINAL LABORATORIES

101 East Marland, Hobbs, NM 88240  
(505) 393-2326 FAX (505) 393-2476

## CHAIN-OF-CUSTODY AND ANALYSIS REQUEST

[illegible]

## ORDINAL LABORATORIES

101 East Marland, Hobbs, NM 88240  
(505) 393-2326 FAX (505) 393-2476

### CHAIN-OF-CUSTODY AND ANALYSIS REQUEST

[illegible]



## ORDINAL LABORATORIES

101 East Marland, Hobbs, NM 88240  
(505) 393-2326 FAX (505) 393-2476

### CHAIN-OF-CUSTODY AND ANALYSIS REQUEST

<b>(505) 393-2326 FAX (505) 393-2476</b>																				
Company Name: BBC International, Inc.					<b>BILL TO</b>															
Project Manager: Cliff Brunson					P.O. #:															
Address: P.O. Box 805					Company: Oxy															
City: Hobbs					Attn: JH															
State: NM Zip: 88241					Address:															
Phone #: 575-397-6388 Fax #: 575-397-0397					City:															
Project #:					State: Zip:															
Project Name: Cedar Canyon 29 Fed com #34					Phone #:															
Project Location: Eddy County					Fax #:															
Sample Name: Jeff Drinlas																				
FOR LAB USE ONLY																				
Lab I.D.	Sample I.D.	(G)RAB OR (C)OMP.	# CONTAINERS	MATRIX					PRESERV	SAMPLING										
				GROUNDWATER	WASTEWATER	SOIL	OIL	SLUDGE	OTHER :	ACID/BASE:	ICE / COOL	OTHER :	DATE	TIME						
H102583	SP 901	C	1			<input checked="" type="checkbox"/>							4/20/17	11:33	<input checked="" type="checkbox"/>					
	SP 902	C	1			<input checked="" type="checkbox"/>								11:42	<input checked="" type="checkbox"/>					
	SP 904	C	1			<input checked="" type="checkbox"/>								12:12	<input checked="" type="checkbox"/>					
	SP 906	C	1			<input checked="" type="checkbox"/>								1:11	<input checked="" type="checkbox"/>					
	SP 907	C	1			<input checked="" type="checkbox"/>								1:20	<input checked="" type="checkbox"/>					
	SP 9012	C	1			<input checked="" type="checkbox"/>								1:39	<input checked="" type="checkbox"/>					
	SP 9017	C	1			<input checked="" type="checkbox"/>								2:15	<input checked="" type="checkbox"/>					
	V @ Sur	C	1			<input checked="" type="checkbox"/>								2:20	<input checked="" type="checkbox"/>					
	E @ Sur	C	1			<input checked="" type="checkbox"/>								2:32	<input checked="" type="checkbox"/>					
	W @ Sur	C	1			<input checked="" type="checkbox"/>								2:33	<input checked="" type="checkbox"/>					

**PLEASE NOTE:** Liability and Damages. Cardholder's liability and client's exclusive remedy for any claim arising whether based in contract or tort, shall be limited to the amount paid by the client for the analyses. All claims including those for negligence and any other cause whatsoever shall be deemed waived unless made in writing and received by Cardinal within 30 days after completion of the applicable service. In no event shall Cardinal be liable for incidental or consequential damages, including without limitation, business interruption, loss of use, or loss of profits incurred by client, its subsidiaries, affiliates or successors arising out of or related to the performance of services hereunder by Cardinal, regardless of whether such claim is based upon any of the above stated reasons or otherwise.

Relinquished By: [Signature]	Date: 4/20/17	Time: 5:45	Received By: [Signature]
Relinquished By: [Signature]	Date: 4/20/17	Time: 4:03	Received By: [Signature]
Delivered By: (Circle One) 266	Sampler - UPS - Bus - Other: Constructed 2852	Sample Condition: Cool Intact <input checked="" type="checkbox"/> Yes <input type="checkbox"/> No	CHECKED BY: (Initials) T.D.#75

**REMARKS:**

Phone Result: ☐ Yes ☐ No Add'l Phone #: \_\_\_\_\_  
 Fax Result: ☐ Yes ☐ No Add'l Fax #: \_\_\_\_\_



# ARDINAL LABORATORIES

101 East Marland, Hobbs, NM 88240  
(505) 393-2326 FAX (505) 393-2476

## CHAIN-OF-CUSTODY AND ANALYSIS REQUEST

### BILL TO

### ANALYSIS REQUEST

Company Name: BBC International, Inc.  
Project Manager: Cliff Brunson

Address: P.O. Box 805  
City: Hobbs  
State: NM Zip: 88241  
Phone #: 575-397-6388 Fax #: 575-397-0397

Project #:   
Project Owner: Dxy  
Project Name: cedar canyon 29 Fed con #34

Project Location: Eddy county  
Sample Name: JEF ornelas

FOR LAB USE ONLY  
Lab I.D.: Sample I.D.:  
H02583 61 S @ Sur

(G)RAB OR (C)OMP.  
# CONTAINERS  
GROUNDWATER  
WASTEWATER  
SOIL  
OIL  
SLUDGE  
OTHER :

ACID/BASE:  
ICE / COOL  
OTHER :

DATE  
TIME

DATE  
TIME

DATE  
TIME

DATE  
TIME

DATE  
TIME

DATE  
TIME

DATE  
TIME

DATE  
TIME

DATE  
TIME

P.O. #:  
Company: Dxy  
Attn: Dxy  
Address:  
City:  
State: Zip:

Phone #:  
Fax #:

Matrix

Preserv

Sampling

DATE  
TIME

DATE  
TIME

DATE  
TIME

DATE  
TIME

DATE  
TIME

DATE  
TIME

DATE  
TIME

DATE  
TIME

DATE  
TIME

DATE  
TIME

DATE  
TIME

REMARKS:

REMARKS:

REMARKS:

REMARKS:

REMARKS:

REMARKS:

REMARKS:

REMARKS:

REMARKS:

REMARKS:

REMARKS:

REMARKS:

REMARKS:

REMARKS:

REMARKS:

REMARKS:

**From:** Bratcher, Mike, EMNRD  
**To:** [Cliff Brunson](#); [Shelly Tucker](#)  
**Cc:** [Weaver, Crystal, EMNRD](#); [Wade Dittrich](#); [Jennifer\\_Smith@oxy.com](#); [Ken Swinney](#); [Jennifer Gilkey](#); [Kathy Purvis](#)  
**Subject:** RE: OXY Cedar Canyon 29 Fed Com #3H (2RP-4339) - Delineation Workplan  
**Date:** Monday, March 5, 2018 11:08:17 AM

---

RE: OXY USA \* Cedar Canyon 29 Fed Com 3H \* **2RP-4339** \* DOR: 8/5/17

Cliff,

Your proposal for remediation of the above referenced release is approved. Federal sites will require like approval from BLM.

Mike Bratcher  
NMOCD District 2  
811 South First Street  
Artesia, NM 88210  
575-748-1283 Ext 108

OCD approval does not relieve the operator of liability should their operations fail to adequately investigate and remediate contamination that may pose a threat to ground water, surface water, human health or the environment. In addition, OCD approval does not relieve the operator of responsibility for compliance with any other federal, state, local laws and/or regulations.

---

**From:** Cliff Brunson [mailto:[cbrunson@bbcinternational.com](mailto:cbrunson@bbcinternational.com)]  
**Sent:** Tuesday, November 28, 2017 6:16 PM  
**To:** Bratcher, Mike, EMNRD <[mike.bratcher@state.nm.us](mailto:mike.bratcher@state.nm.us)>; Shelly Tucker <[stucker@blm.gov](mailto:stucker@blm.gov)>  
**Cc:** Weaver, Crystal, EMNRD <[Crystal.Weaver@state.nm.us](mailto:Crystal.Weaver@state.nm.us)>; Wade Dittrich <[Wade\\_Dittrich@oxy.com](mailto:Wade_Dittrich@oxy.com)>; [Jennifer\\_Smith@oxy.com](mailto:Jennifer_Smith@oxy.com); [Ken Swinney](mailto:Ken Swinney) <[kswinney@bbcinternational.com](mailto:kswinney@bbcinternational.com)>; [Jennifer Gilkey](mailto:Jennifer Gilkey) <[jgilkey@bbcinternational.com](mailto:jgilkey@bbcinternational.com)>; [Kathy Purvis](mailto:Kathy Purvis) <[kathy@bbcinternational.com](mailto:kathy@bbcinternational.com)>  
**Subject:** OXY Cedar Canyon 29 Fed Com #3H (2RP-4339) - Delineation Workplan

Mike and Shelly,

Please find the attached Delineation Workplan and remediation proposal for the OXY Cedar Canyon 29 Fed Com #3H (2RP-4339). OXY is requesting that you review this plan and is looking forward to both the OCD's and BLM's approval.

If you have any questions, please let me know.

Thanks, Cliff

Cliff P. Brunson, CEI, CRS  
President



BBC International, Inc.  
World-Wide Environmental Specialists  
Mailing Address:  
P. O. Box 805  
Hobbs, NM 88241-0805 USA  
Shipping Address:  
1324 W. Marland St.  
Hobbs, NM 88240 USA  
Phone: (575) 397-6388  
Fax: (575) 397-0397  
E-Mail: [cbrunson@bbcinternational.com](mailto:cbrunson@bbcinternational.com)



\*\*\*\*\*

Confidentiality Notice: This electronic transmission (and any attached documents) is intended only for the person(s) to whom it is addressed and may contain information that is privileged, confidential, or otherwise protected from disclosure. If you have received this transmission in error, please immediately notify the sender by e-mail or by telephone call to (575) 397-6388 for handling instructions. Any disclosure or distribution of the contents of this transmission by anyone other than the named recipient(s) is strictly prohibited.

\*\*\*\*\*

From: Tucker, Shelly  
To: [Cliff Brunson](#)  
Cc: [Mike Bratcher](#); [Crystal Weaver](#); [Wade Dittrich](#); [Jennifer Smith@oxy.com](#); [Ken Swinney](#); [Jennifer Gilkey](#); [Kathy Purvis](#)  
Subject: Re: OXY Cedar Canyon 29 Fed Com #3H (2RP-4339) - Delineation Workplan  
Date: Tuesday, December 26, 2017 4:13:25 PM

---

## BLM approves your delineation plan for the OXY Cedar Canyon 29 Fed Com #3H (2RP-4339)

If you have any questions or concerns, please do not hesitate to contact me.

Sincerely,

*Shelly J Tucker*

Environmental Protection Specialist  
O&G Spill/Release Coordinator

Bureau of Land Management  
620 E. Greene St  
Carlsbad, NM 88220

575.234.5905 - Direct  
575.361.0084 - Cellular  
575.234.6235 - Emergency Spill Number

[stucker@blm.gov](mailto:stucker@blm.gov)

The **BLM acceptance/approval does not** relieve the operator of liability should their operations have failed to adequately investigate and remediate contamination that may pose a threat to groundwater, surface water, human health or the environment or if the location fails to reclaim properly. In such an event that the location does not revegetate, or future issues with contaminants are encountered, the operator will be asked to address the issues until the contaminant issues are fully mitigated and the location is successfully reclaimed. In addition, BLM approval does not relieve the operator of responsibility for compliance with any other federal, state or local laws/regulations.

**Confidentiality Warning:** This message along with any attachments are intended only for use of the individual or entity to which it is addressed and may contain information that is privileged or confidential and exempt from disclosure under applicable law. If the reader of this message is not the intended recipient or the employee or agent responsible for delivering this message to the intended recipient, you are hereby notified that any dissemination, distribution, or copying of this communication is strictly prohibited. If you have received this communication in error, please notify the sender immediately.

On Tue, Nov 28, 2017 at 6:15 PM, Cliff Brunson <[cbrunson@bbcinternational.com](mailto:cbrunson@bbcinternational.com)> wrote:

Mike and Shelly,

Please find the attached Delineation Workplan and remediation proposal for the OXY Cedar Canyon 29 Fed Com #3H (2RP-4339). OXY is requesting that you review this plan and is looking forward to both the OCD's and BLM's approval.

If you have any questions, please let me know.

Thanks, Cliff

Cliff P. Brunson, CEI, CRS

President

BBC International, Inc.

World-Wide Environmental Specialists

Mailing Address:

P. O. Box 805

Hobbs, NM 88241-0805 USA

Shipping Address:

1324 W. Marland St.

Hobbs, NM 88240 USA

Phone: (575) 397-6388

Fax: (575) 397-0397

E-Mail: [cbrunson@bbcinternational.com](mailto:cbrunson@bbcinternational.com)



\*\*\*\*\*

Confidentiality Notice: This electronic transmission (and any attached documents) is intended only for the person(s) to whom it is addressed and may contain information that is privileged, confidential, or otherwise protected from disclosure. If you have received this transmission in error, please immediately notify the sender by e-mail or by telephone call to (575) 397-6388 for handling instructions. Any disclosure or distribution of the contents of this transmission by anyone other than the named recipient(s) is strictly prohibited.

\*\*\*\*\*















