

**Closure Report****QYNFD-190806-C-1440****Site Description**

Site Name:	Cedar Canyon 28-4 CTB
Company:	Oxy USA Inc.
Legal Description:	U/L K, Section 28, T24S, R29E
County:	Eddy County, NM
GPS Coordinates:	N 32.18643 W-103.99269

**Release Data**

Date of Release:	11/27/18
Type of Release:	Oil
Source of Release:	Compromised 3" ball valve on circulating line to tank #4
Volume of Release:	240 bbls
Volume Recovered:	239 bbls

**Remediation Specifications**

Remediation Parameters:	Since the spill was contained within a lined and contained facility, the liner was cleaned by pressure-washing. The liner was inspected and found to be in satisfactory condition.	
Remediation Activities:	7/15/19	
Plan Sent to OCD:	n/a	Lined facility
OCD Approval of Plan:	n/a	Lined facility
Plan Sent to BLM:	n/a	Lined facility
BLM Approval of Plan:	n/a	Lined facility

**Supporting Documentation**

Initial C-141	Signed 12/13/18
C-141, page 6	Signed and included
Site Diagram	December 2018
Pictures	Liner integrity pictures

**Request for Closure**

Based on the completion of the remediation plan, BBC International, Inc. requests closure approval from NMOCD.

Cliff Brunson, President, BBC International, Inc.

07/18/2019

# Oxy, Cedar Canyon 28-4 CTB

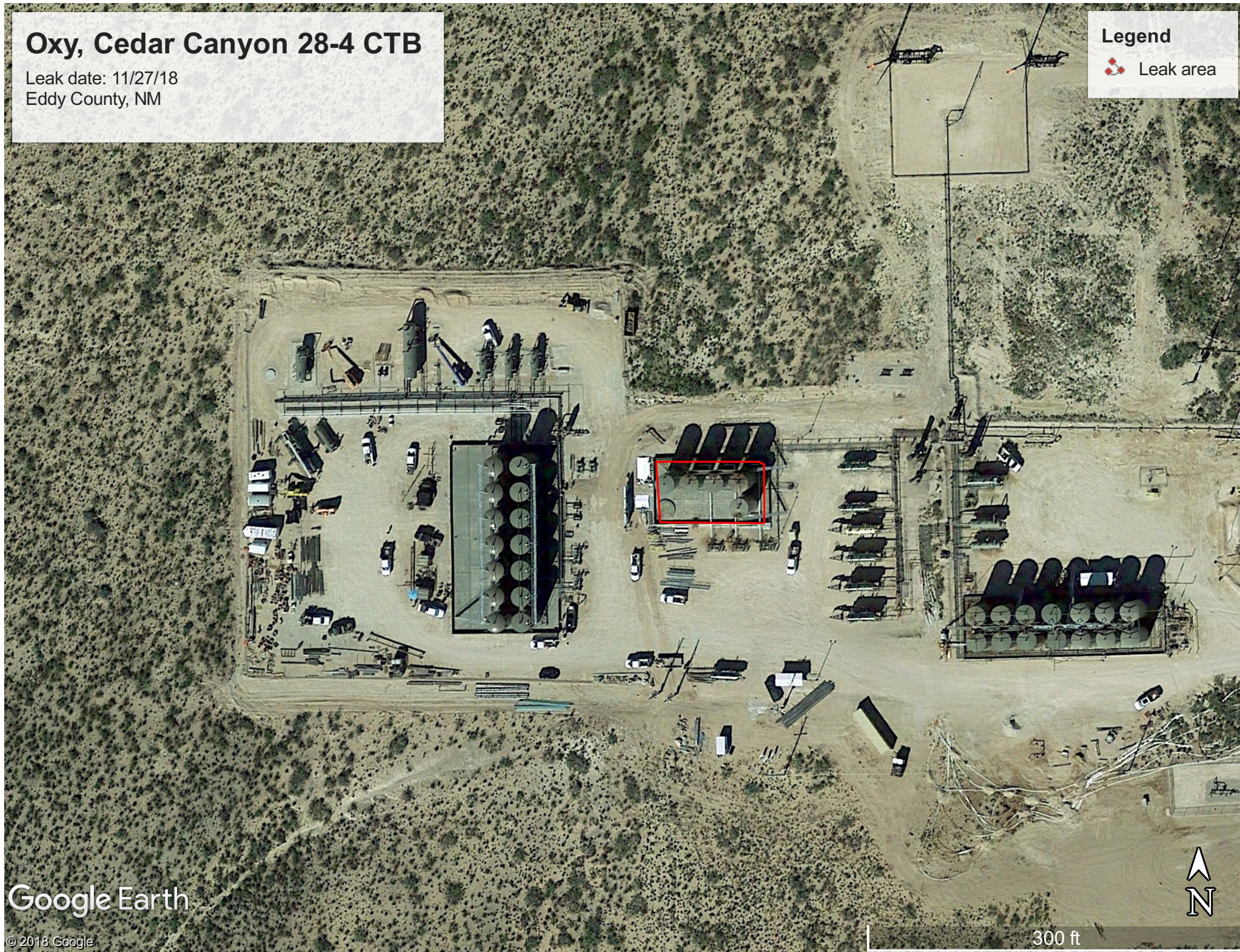
Leak date: 11/27/18  
Eddy County, NM

Legend  
Leak area

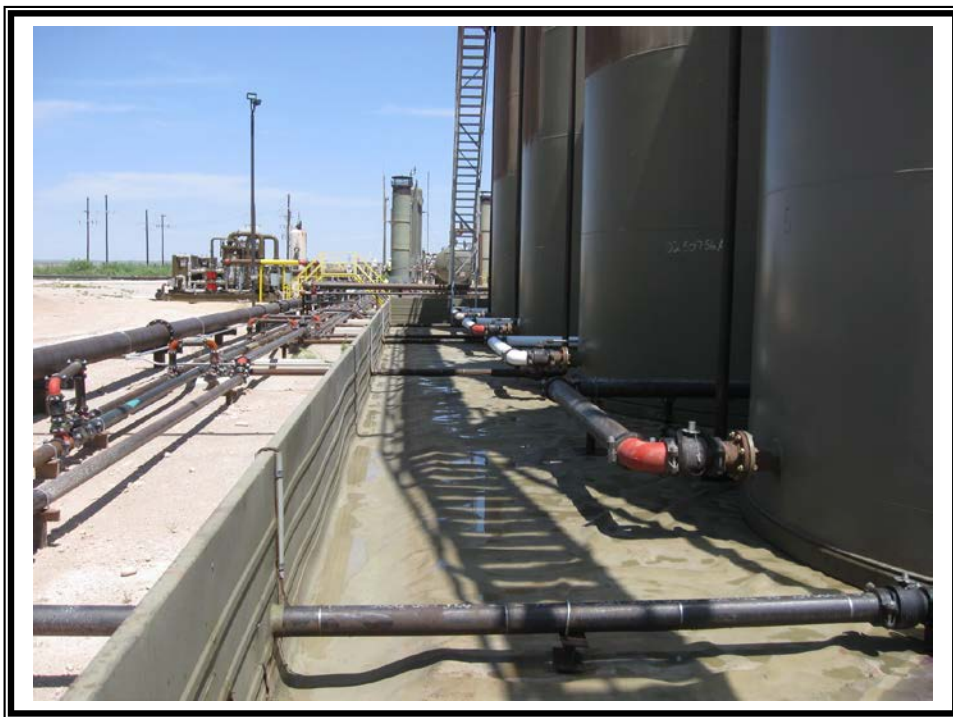
Google Earth

© 2018 Google

300 ft









State of New Mexico  
Oil Conservation Division

Incident ID	
District RP	2RP-5171
Facility ID	
Application ID	

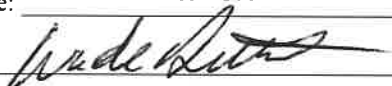
## Closure

The responsible party must attach information demonstrating they have complied with all applicable closure requirements and any conditions or directives of the OCD. This demonstration should be in the form of a comprehensive report (electronic submittals in .pdf format are preferred) including a scaled site map, sampling diagrams, relevant field notes, photographs of any excavation prior to backfilling, laboratory data including chain of custody documents of final sampling, and a narrative of the remedial activities. Refer to 19.15.29.12 NMAC.

**Closure Report Attachment Checklist:** *Each of the following items must be included in the closure report.*

- ☒ A scaled site and sampling diagram as described in 19.15.29.11 NMAC
- ☒ Photographs of the remediated site prior to backfill or photos of the liner integrity if applicable (Note: appropriate OCD District office must be notified 2 days prior to liner inspection)
- ☐ Laboratory analyses of final sampling (Note: appropriate ODC District office must be notified 2 days prior to final sampling)
- ☒ Description of remediation activities

I hereby certify that the information given above is true and complete to the best of my knowledge and understand that pursuant to OCD rules and regulations all operators are required to report and/or file certain release notifications and perform corrective actions for releases which may endanger public health or the environment. The acceptance of a C-141 report by the OCD does not relieve the operator of liability should their operations have failed to adequately investigate and remediate contamination that pose a threat to groundwater, surface water, human health or the environment. In addition, OCD acceptance of a C-141 report does not relieve the operator of responsibility for compliance with any other federal, state, or local laws and/or regulations. The responsible party acknowledges they must substantially restore, reclaim, and re-vegetate the impacted surface area to the conditions that existed prior to the release or their final land use in accordance with 19.15.29.13 NMAC including notification to the OCD when reclamation and re-vegetation are complete.

Printed Name: Wade Dittrich Title: Environmental Coordinator  
Signature:  Date: 7-7-19  
email: wade\_dittrich@oxy.com Telephone: (575) 390-2828

**OCD Only**

Received by: \_\_\_\_\_ Date: \_\_\_\_\_

Closure approval by the OCD does not relieve the responsible party of liability should their operations have failed to adequately investigate and remediate contamination that poses a threat to groundwater, surface water, human health, or the environment nor does not relieve the responsible party of compliance with any other federal, state, or local laws and/or regulations.

Closure Approved by: \_\_\_\_\_ Date: \_\_\_\_\_

Printed Name: \_\_\_\_\_ Title: \_\_\_\_\_