

2RF – 149

**Eddy State Water
Treatment
and Reuse Facility
Application
Volume 2**

**Solaris Water
Midstream LLC
October 26, 2020**

VOLUME 2

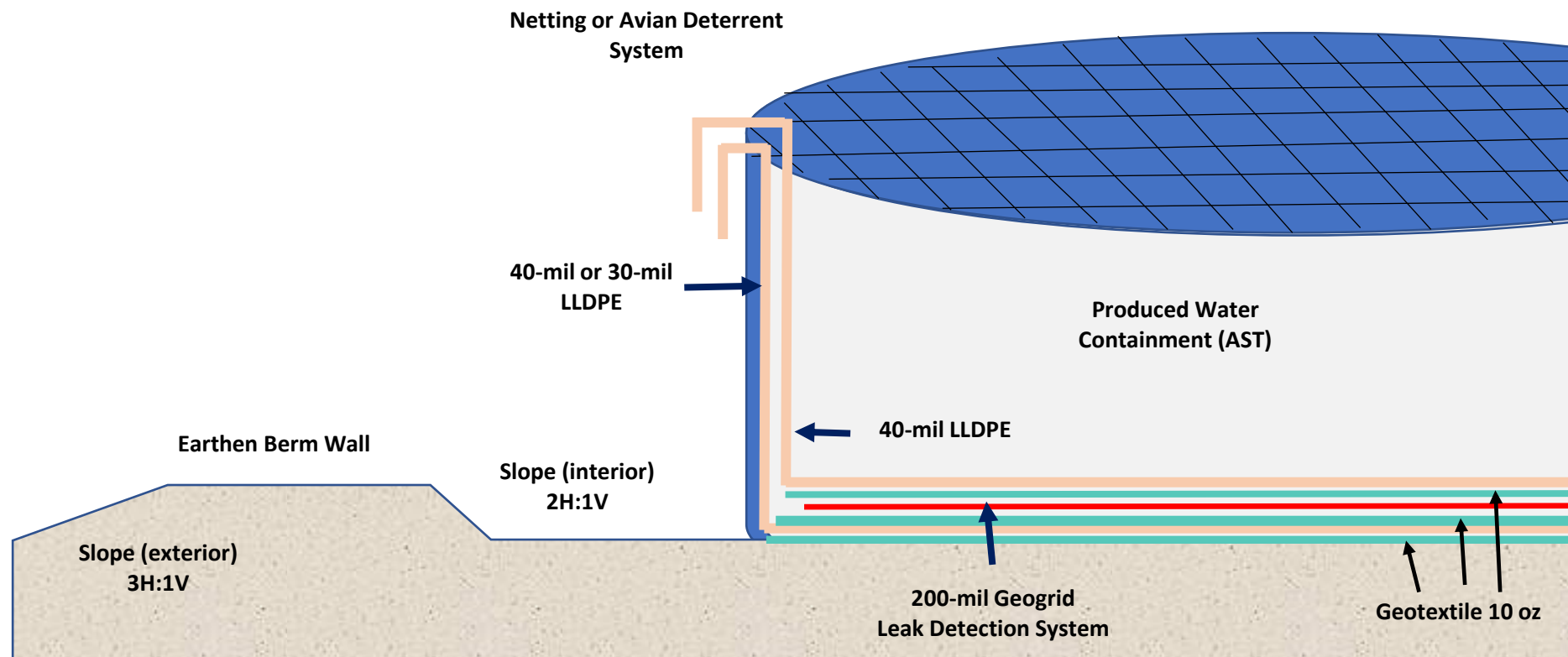
C-147 REGISTRATION PACKAGE FOR EDDY STATE CONTAINMENTS AND RECYCLING FACILITY AST CONTAINMENT Section 2, T26S, R29E, Eddy County



Fold in an outcrop of the Gatuna Formation near the Pecos River. This outcrop is approximately 2.64 miles east of the site for the Eddy State Recycling Facility.

**Prepared for:
Solaris Midstream LLC
9811 Katy Freeway Suite 900
Houston, TX 77024**

**Prepared by:
R.T. Hicks Consultants, Ltd.
901 Rio Grande NW F-142
Albuquerque, New Mexico**



Description of Leak Detection System

- 200-mil geogrid drainage layer lies between the primary and secondary liner
- Geotextile between the geogrid and the liners
- 2- to 3-inch deep sump excavated within the compacted caliche pad as a collection point for any seepage
- A ¾-inch aqua braid line runs from the collection sump between the liners and beneath the geogrid drainage system to the outside of the AST
- The leak detection pipe is fastened to the exterior of the AST and terminates at ground level.
- Every week, a portable self-priming peristaltic pump connects to the leak detection system.
- The self-priming pump discharges into a ¾" aqua braid line, through a turbine meter, and back into the AST, on top of the primary liner
- If fluid is detected, it is tested for conductance to determine the origin of the water (e.e. produced water or condensation)

R.T. Hicks Consultants
Albuquerque, NM

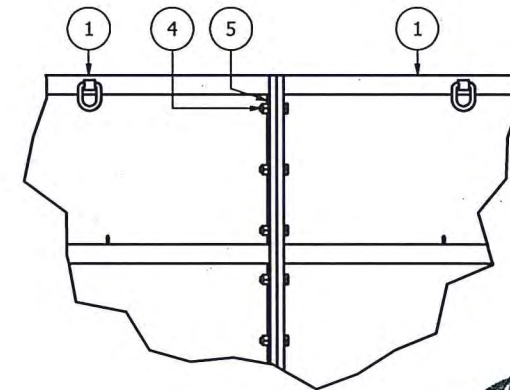
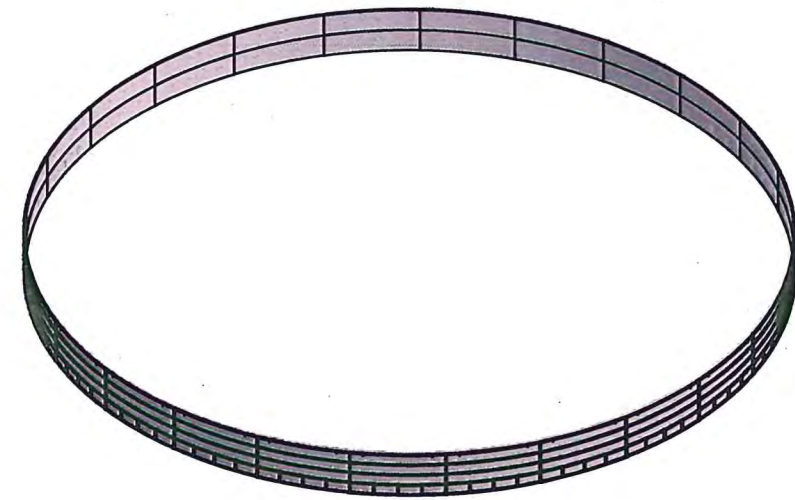
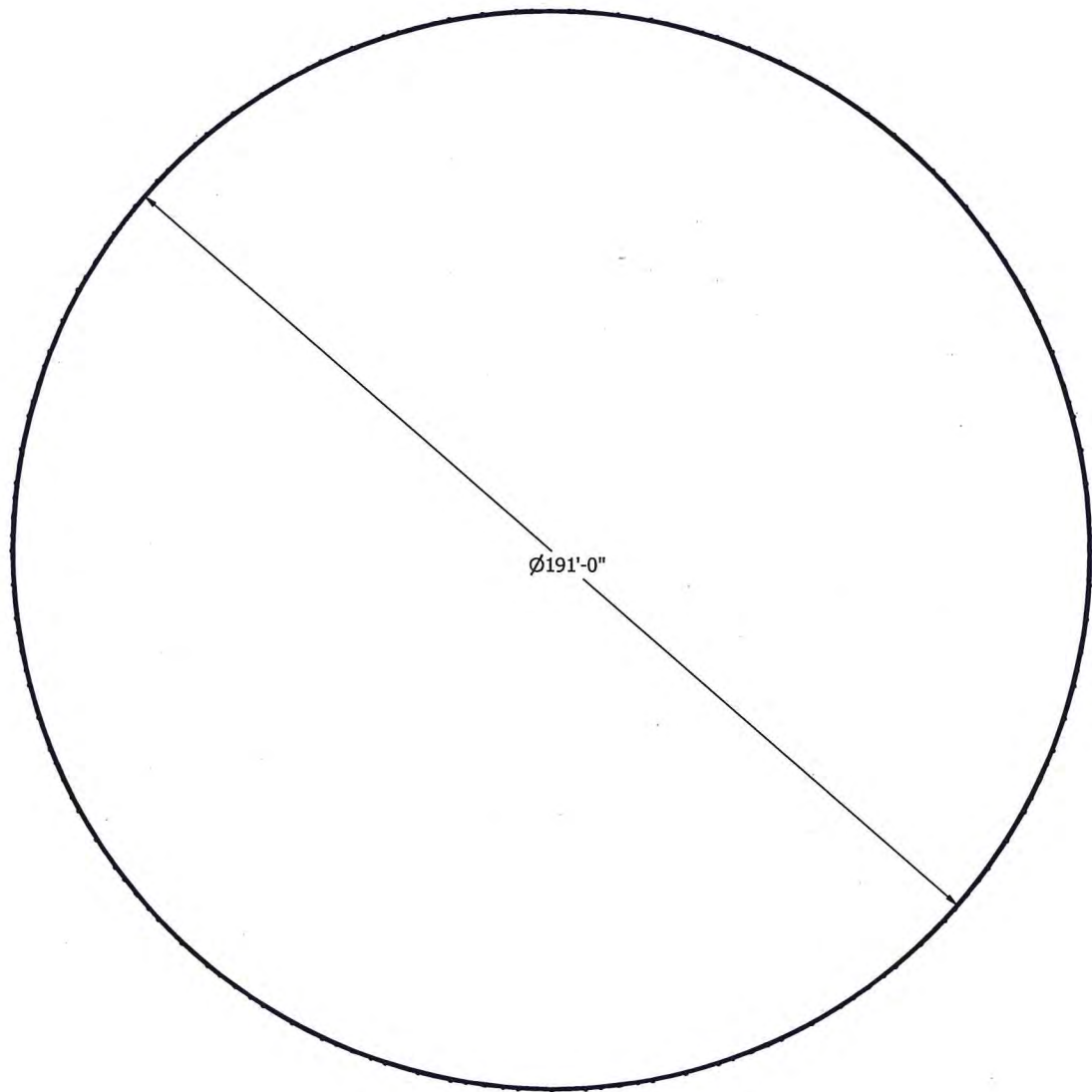
Design Sketch

Plate 1

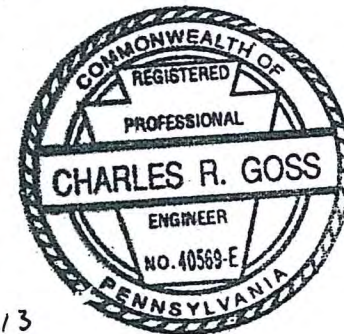
Solaris Water Midstream - Eddy State AST Containment

Jul-20

AST DESIGN DRAWINGS, LINER SPECIFICATIONS AND SET UP SOP



DETAIL A
SCALE 1 / 25



CRG
18 Dec 2013



Reviewer's Notes:

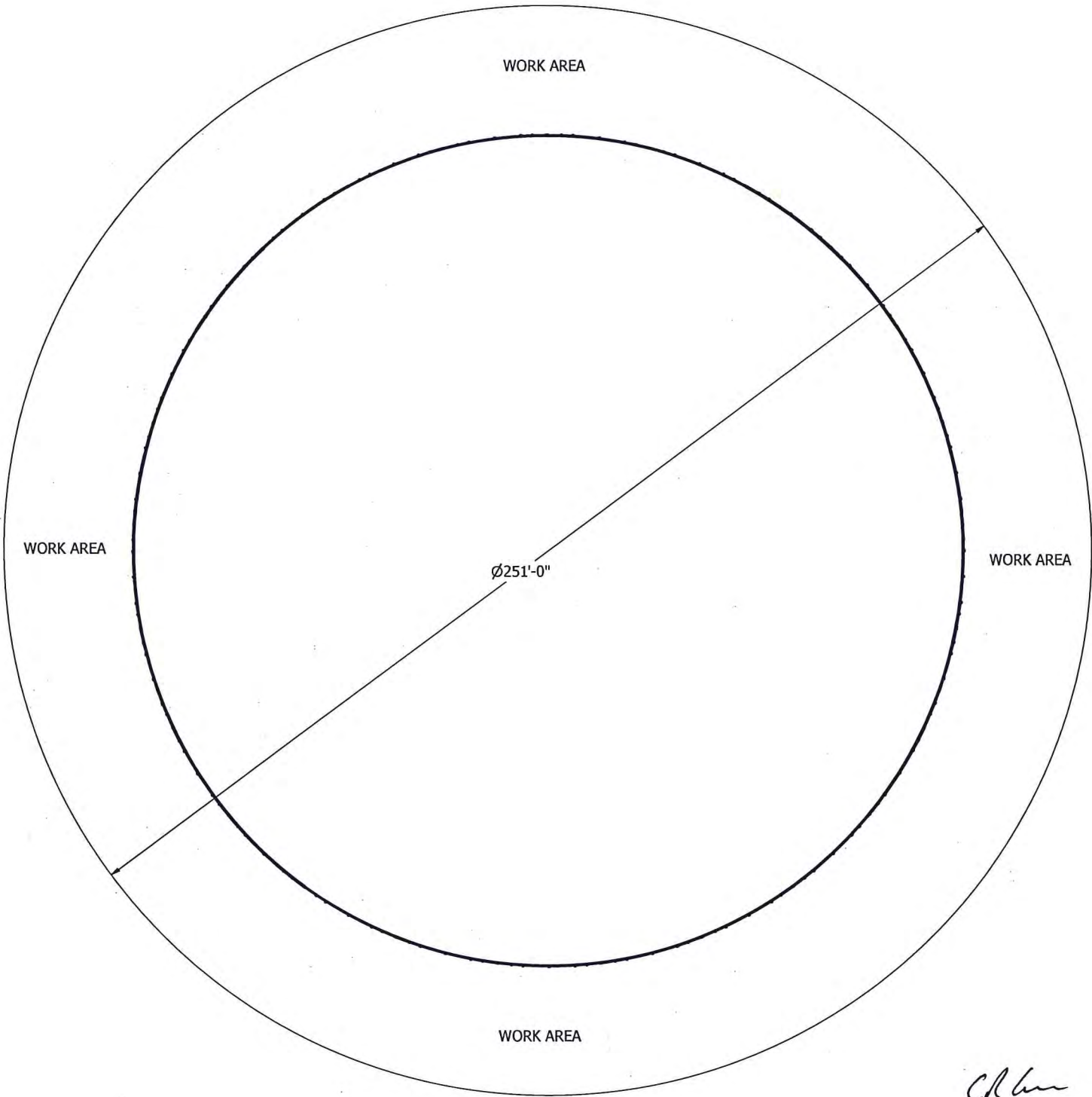
1. This drawing set replaces set previously sealed on 27 MAR 2013
2. Empty corral cannot withstand high winds.

6	120	4X4X4 LUMBER	4" x 4" x 48" Lumber (NOT SHOWN)	-
5	850	WASH-200-1-1/4	1-1/4" ASTM F436 Galvanized Structural Washer	-
4	425	NUT-200-1-1/4-7	1-1/4"-7 ASTM A563 Gr DH Galvanized Hex Nut	-
7	425	BOLT-1-1/4-4333	1-1/4"-7 x 5" ASTM A490 Structural Bolt	-
3	25	ETC-106	.063" X 8" X 168" RUBBER SHEET (NOT SHOWN)	-
2	5	MWC-SA-008A	60,000 BBL Corral Shipping Support	-
1	25	MWC-SA-002a	60,000 BBL CORRAL WALL SECTION	-
ITEM	QTY	PART NUMBER	DESCRIPTION	REV

THIS DRAWING IS PROPERTY OF JWF INDUSTRIES IT MAY NOT BE COPIED OR DISTRIBUTED IN WHOLE OR PART. WITHOUT PRIOR PERMISSION OF JWF INDUSTRIES.		INTERPRET DIMENSIONS AND TOLERANCES IN ACCORDANCE WITH ASME Y14.5-2009 UNLESS OTHERWISE SPECIFIED. DIMENSIONS ARE IN INCHES (MM).		DRAWN BY mspecial		ETC Environmental Tank & Container JOHNSTOWN, PA 855-382-8265 www.etc-tank.com	
		FRACTIONAL ± 1/4 (6.4) XXX ± .25 (6.4) XXXX ± .125 (3.2) XXXXX ± .063 (1.6) ANGULAR ± 1°		DATE 7/12/2012	TITLE		
		THICKNESS NA WEIGHT N/A		CHECKED BY dbodenshatz	60,000 BBL MOBILE WATER CORRAL, BOLT-UP DESIGN		
		THIRD ANGLE PROJECTION		DATE 11/23/2012	APPROVED mspecial		
NEXT ASSY USED ON		DATE 11/23/2012		SIZE PRT. NO.		REV	
APPLICATION		MATERIAL		C		MWC-A-002a	
SCALE DO NOT SCALE		DWG. NO. MWC-A-002a		SHEET 1 OF 2		LOCATION: C:\Vault\ETCVault\Corrals\MWC-A-002a.dwg	

NOTES:

1. MINIMUM OF 30 FEET OF WORK AREA AROUND CORRAL
2. OVER ALL SITE MUST BE LEVEL TO +/- .50 INCH
3. RING AREA WHERE CORRAL PANELS WILL BE SETUP MUST BE LEVEL TO +/- .25 INCH
4. SOIL COMPACTION MUST MEET ASTM D-698A, 90% OR GREATER
5. BUILD A 12" X 12" SAND INSIDE CORNER RELIEF BEFORE INSTALLING LINER
6. MUST USE 1"-1/4"-7 X 4" GRADE A490 STRUCTURAL BOLTS
7. PANELS MUST HAVE ALL CONNECTING BOLTS TIGHTENED AND LINER FULLY SECURED BEFORE ADDING WATER
8. ALLOW FOR 6 INCHES OF FREEBOARD FROM TOP OF CORRAL



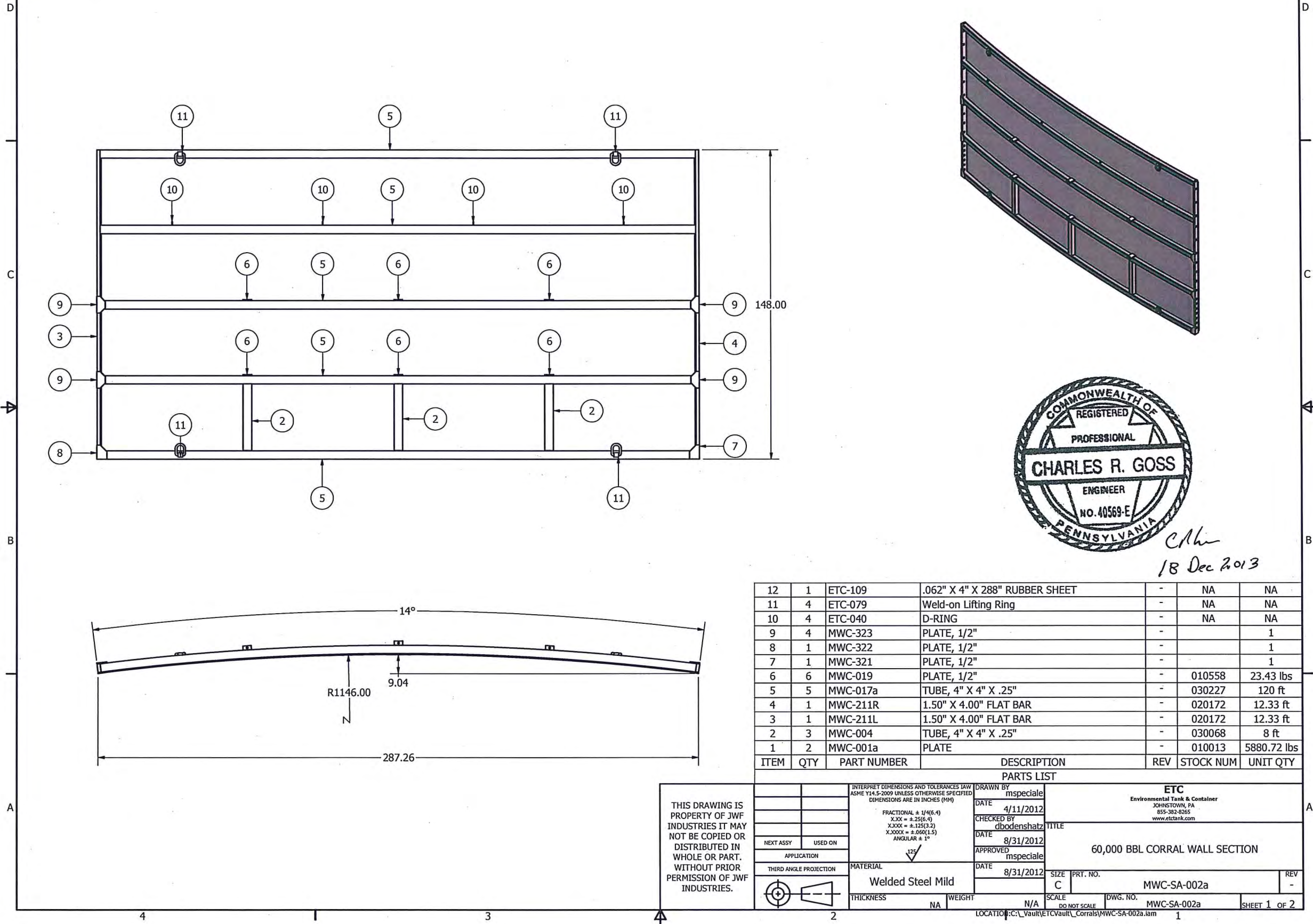
CR
18 Dec 2013

THIS DRAWING IS PROPERTY OF JWF INDUSTRIES IT MAY NOT BE COPIED OR DISTRIBUTED IN WHOLE OR PART. WITHOUT PRIOR PERMISSION OF JWF INDUSTRIES.			INTERPRET DIMENSIONS AND TOLERANCES IN INCHES (MM)		DRAWN BY mspecial		ETC Environmental Tank & Container JOHNSTOWN, PA 855-382-6265 www.etc-tank.com	
			FRACTIONAL ± 1/4(6.4) XXX ± .25(6.4) XXXX ± .125(3.2) XXXXX ± .060(1.5) ANGULAR ± 1°		DATE 7/12/2012		TITLE	
					CHECKED BY dbodenshatz		60,000 BBL MOBILE WATER CORRAL, BOLT-UP DESIGN	
					DATE 11/23/2012		SIZE PRT. NO.	
					APPROVED mspecial		C MWC-A-002a	
		THICKNESS	NA	WEIGHT	N/A	SCALE	DWG. NO.	REV
						DO NOT SCALE	MWC-A-002a	-
						LOCATION: C:\Vault\ETC\Vault\Corrals\MWC-A-002a.lam		SHEET 2 OF 2

NOTES:

1. BLAST TO A 1 1/2 - 2 mil PROFILE
2. PAINT WITH CARBOLINE 8845, 3 - 5 mils THICK

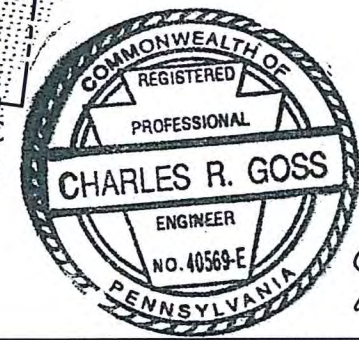
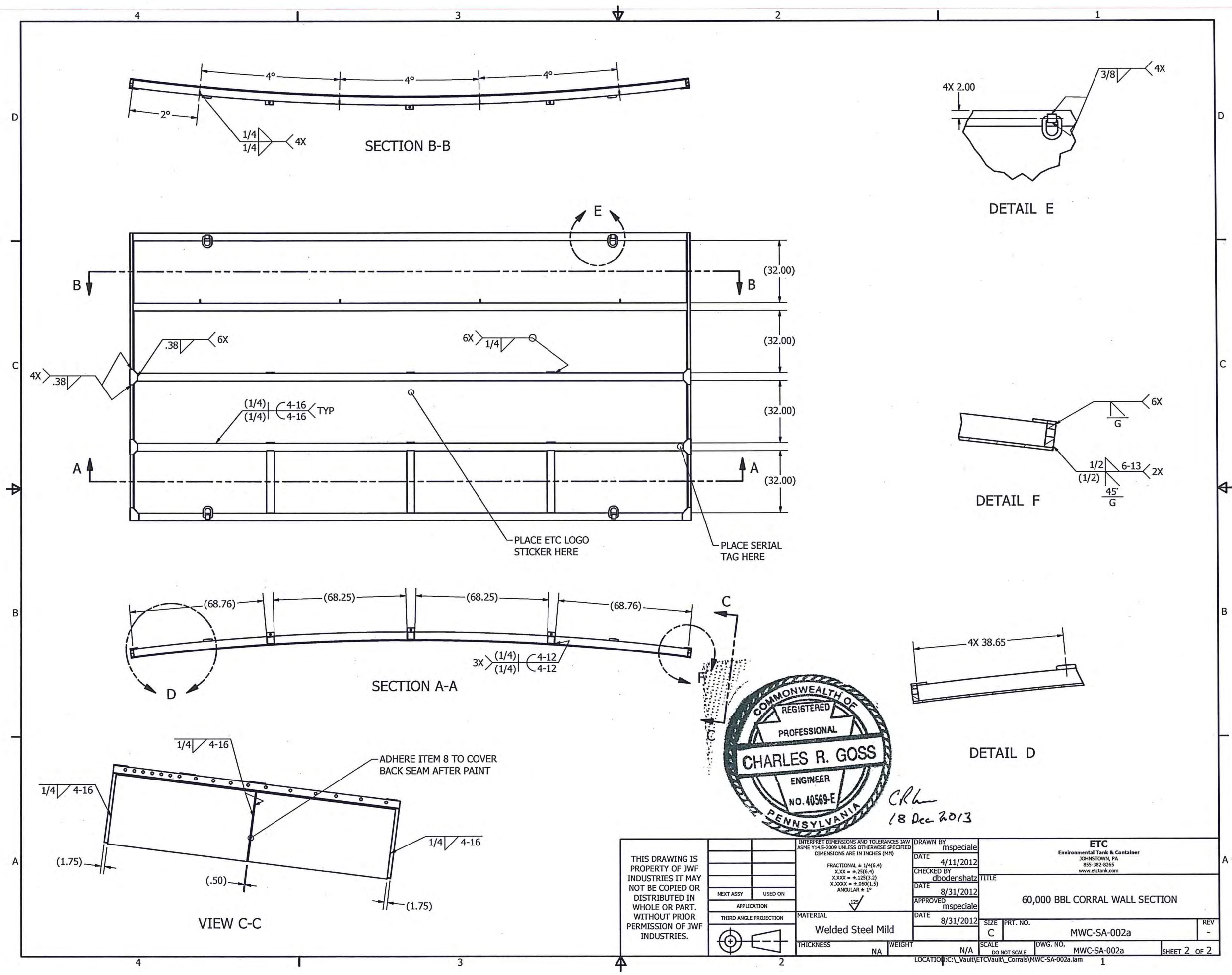
REVISION HISTORY				
ZONE	REV	DESCRIPTION	DATE	APPROVED
	-	INITIAL RELEASE	10/1/2012	MJS



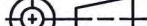
12	1	ETC-109	.062" X 4" X 288" RUBBER SHEET	-	NA	NA
11	4	ETC-079	Weld-on Lifting Ring	-	NA	NA
10	4	ETC-040	D-RING	-	NA	NA
9	4	MWC-323	PLATE, 1/2"	-		1
8	1	MWC-322	PLATE, 1/2"	-		1
7	1	MWC-321	PLATE, 1/2"	-		1
6	6	MWC-019	PLATE, 1/2"	-	010558	23.43 lbs
5	5	MWC-017a	TUBE, 4" X 4" X .25"	-	030227	120 ft
4	1	MWC-211R	1.50" X 4.00" FLAT BAR	-	020172	12.33 ft
3	1	MWC-211L	1.50" X 4.00" FLAT BAR	-	020172	12.33 ft
2	3	MWC-004	TUBE, 4" X 4" X .25"	-	030068	8 ft
1	2	MWC-001a	PLATE	-	010013	5880.72 lbs

ITEM	QTY	PART NUMBER	DESCRIPTION	REV	STOCK NUM	UNIT QTY
------	-----	-------------	-------------	-----	-----------	----------

THIS DRAWING IS PROPERTY OF JWF INDUSTRIES IT MAY NOT BE COPIED OR DISTRIBUTED IN WHOLE OR PART. WITHOUT PRIOR PERMISSION OF JWF INDUSTRIES.		INTERPRET DIMENSIONS AND TOLERANCES IN INCHES (MM) FRACTIONAL ± 1/4(6.4) X.XX ± .25(6.4) X.XXX ± .125(3.2) X.XXXX ± .060(1.5) ANGULAR ± 1°		DRAWN BY mspeciale DATE 4/11/2012 CHECKED BY dbodenshatz DATE 8/31/2012 APPROVED mspeciale DATE 8/31/2012		ETC Environmental Tank & Container JOHNSGOWN, PA 855-382-8265 www.etc-tank.com	
APPLICATION THIRD ANGLE PROJECTION		MATERIAL Welded Steel Mild		SIZE C		PRT. NO. MWC-SA-002a	
THICKNESS NA		WEIGHT N/A		SCALE DO NOT SCALE		DWG. NO. MWC-SA-002a	
LOCATION C:\Vault\ETCVault\Corrals\MWC-SA-002a.lam						SHEET 1 OF 2	



CRh
18 Dec 2013

THIS DRAWING IS PROPERTY OF JWF INDUSTRIES IT MAY NOT BE COPIED OR DISTRIBUTED IN WHOLE OR PART. WITHOUT PRIOR PERMISSION OF JWF INDUSTRIES.			INTERPRET DIMENSIONS AND TOLERANCES IN ACCORDANCE WITH ASME Y14.5-2009 UNLESS OTHERWISE SPECIFIED DIMENSIONS ARE IN INCHES (MM)	DRAWN BY mspeciale		ETC Environmental Tank & Container JOHNSTOWN, PA 855-382-8265 www.etc-tank.com			
				DATE 4/11/2012	CHECKED BY dbodenshatz	TITLE 60,000 BBL CORRAL WALL SECTION			
				DATE 8/31/2012					
				APPROVED mspeciale					
	NEXT ASSY	USED ON			DATE 8/31/2012		SIZE	PRT. NO.	REV
	APPLICATION						C	MWC-SA-002a	-
	THIRD ANGLE PROJECTION				DATE 8/31/2012		SCALE	DWG. NO.	
	MATERIAL Welded Steel Mild			SCALE DO NOT SCALE			MWC-SA-002a		SHEET 2 OF 2
THICKNESS NA		WEIGHT N/A							
LOCATION: C:\Vault\ETC\Vault\Corrals\MWC-SA-002a.lam									

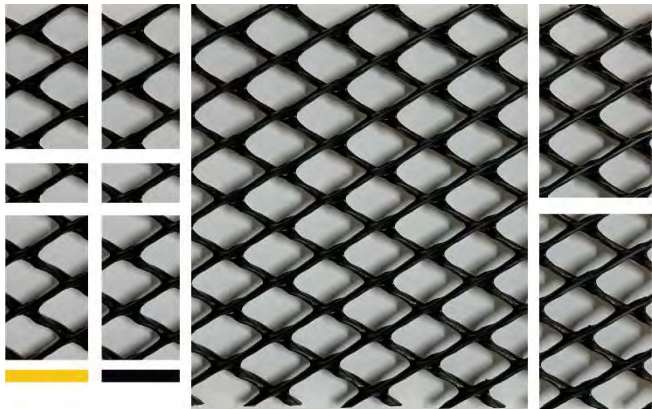


SKAPS TRANSNET™ geonet consists of SKAPS Geonet made from HDPE resin.

PROPERTY	TEST METHOD	UNIT	VALUE	QUALIFIER
Thickness	ASTM D 5199	mil	200	MAV ⁽³⁾
Carbon Black	ASTM D 4218	%	2.0	MAV
Tensile Strength	ASTM D 7179	lb/in	45	MAV
Melt Flow	ASTM D 1238 ⁽²⁾	g/10 min	1.0	Maximum
Density	ASTM D 1505	g/cm ³	0.94	MAV
Transmissivity ⁽¹⁾	ASTM D 4716	gal/min/ft (m ² /sec)	9.67 (2.0 x 10 ⁻³)	MAV

Notes:

- (1) Transmissivity measured using water at 21 ± 2 °C (70 ± 4 °F) with a gradient of 0.1 and a confining pressure of 10,000 psf between steel plates after 15 minutes. Values may vary with individual labs.
- (2) Condition 190/2.16
- (3) Minimum average value



*This information is provided for reference purposes only and is not intended as a warranty or guarantee.
SKAPS assumes no liability in connection with the use of this information.*

PROPERTY	TEST METHOD	FREQUENCY ⁽¹⁾	UNIT Imperial	
SPECIFICATIONS				
Thickness (min. avg.)	ASTM D5199	Every roll	mils	40.0
Thickness (min.)	ASTM D5199	Every roll	mils	36.0
Melt Index - 190/2.16 (max.)	ASTM D1238	1/Batch	g/10 min	1.0
Sheet Density (8)	ASTM D792	Every 10 rolls	g/cc	≤ 0.939
Carbon Black Content	ASTM D4218	Every 2 rolls	%	2.0 - 3.0
Carbon Black Dispersion	ASTM D5596	Every 10 rolls	Category	Cat. 1 & Cat. 2
OIT - standard (avg.)	ASTM D3895	1/Batch	min	100
Tensile Properties (min. avg) (2)	ASTM D6693	Every 2 rolls		
Strength at Break			ppi	168
Elongation at Break			%	800
2% Modulus (max.)	ASTM D5323	Per formulation	ppi	2400
Tear Resistance (min. avg.)	ASTM D1004	Every 5 rolls	lbf	22
Puncture Resistance (min. avg.)	ASTM D4833	Every 5 rolls	lbf	62
Dimensional Stability	ASTM D1204	Certified	%	± 2
Multi-Axial Tensile (min.)	ASTM D5617	Per formulation	%	30
Oven Aging - % retained after 90 days	ASTM D5721	Per formulation (5)		
STD OIT (min. avg.)	ASTM D3895		%	35
HP OIT (min. avg.)	ASTM D5885		%	60
UV Resistance - % retained after 1600 hr	ASTM D7238	Per formulation (5)		
HP-OIT (min. avg.)	ASTM D5885		%	35
Low Temperature Brittleness	ASTM D746	Certified	°F	- 106
SUPPLY SPECIFICATIONS (Roll dimensions may vary ±1%)				
Color (one side) (4)		-		White


NOTES

1. Testing frequency based on standard roll dimension and one batch is approximately 180,000 lbs (or one railcar).
2. Machine Direction (MD) and Cross Machine Direction (XMD or TD) average values should be on the basis of 5 specimens each direction.
4. Smooth edge may not have the same consistent shade of color as the membrane itself. The colored layer may cause the carbon black content results to be higher than 3%.
5. Certified by core (black) formulation on geomembrane roll or molded plaque.
8. Correlation table is available for ASTM D792 vs ASTM D1505. Both methods give the same results.

* All values are nominal test results, except when specified as minimum or maximum.

* The information contained herein is provided for reference purposes only and is not intended as a warranty of guarantee. Final determination of suitability for use contemplated is the sole responsibility of the user. SOLMAX assumes no liability in connection with the use of this information.

Solmax is not a design professional and has not performed any design services to determine if Solmax's goods comply with any project plans or specifications, or with the application or use of Solmax's goods to any particular system, project, purpose, installation or specification.

	Mustang Extreme Environmental Services, LLC		Pg. 1 of 5
	MEES-003	Rev: 01	

Policy Template

APPROVALS

*All approvals are maintained and controlled By **OPERATIONS MANAGEMENT***

*Please refer to the **SOP MANUAL** for the current controlled revision and approval records.*

REVISION HISTORY

<i>AUTHOR</i>	<i>REVISED SECTION/PARAGRAPH</i>	<i>REV</i>	<i>RELEASED</i>
<u>Jeff Anderson</u>	<u>INITIAL RELEASE</u>	02	

Draft and Archived/Obsolete revisions are not to be used.



	Mustang Extreme Environmental Services, LLC		Pg. 2 of 5
	MEES-003	Rev: 01	

Table of Contents

1. PURPOSE.....	3
2. SCOPE	3
3. DEFINITIONS.....	3
4. RESPONSIBILITIES	3
5. POLICY.....	3
5.1 PREPARE SURFACE AREA	3
5.2 GROUND COVER INSTALLATION	4
5.3 TANK WALL ASSEMBLY	4
5.4 TANK LINER INSTALLATION	4
5.5 FINAL INSTALLATION	5
5.6 FINAL INSPECTION	5
6. APPLICABLE REFERENCES	5

	Mustang Extreme Environmental Services, LLC		Pg. 3 of 5
	MEES-003	Rev: 01	

1. PURPOSE

This procedure is being implemented to standardize the process for installing Epic 360 Tanks and to ensure the quality from a standardized plan.

2. SCOPE

This procedure applies to the installations of 10,000bbl, 22,000bbl, 40,000bbl, and 60,000bbl Epic Tanks

3. DEFINITIONS

- Epic 360 Tank – Above ground tank used for water containment. Permanent or temporary structure used in industrial processes where large volumes of water are needed.
- Secondary Containment – Usually a “steel wall” type of containment that surrounds the perimeter of the Epic tank and serves as safeguard if leaks were to occur.

4. RESPONSIBILITIES

- SOP process owner – On-Site Epic Supervisor designated by management
- On-site Epic Supervisor – Ensure that SOP is strictly followed as the source for correct assembly and installation of Epic Tanks and their secondary containments.
- Crew Leader – Follow direction given by the On-Site Supervisor and managing their crew in a safe and productive manner
- Crew – Labor portion of the assembly/installation process
- Safety Coordinator – Ensuring that safety standards are being followed by the On-Site Supervisor, Crew Leader, and Crew. This is attained through audits and evaluation.
- Quality Director – Performs a post-completion inspection and ensures that the tank was built to customer specifications.
- Regulatory/Document Coordinator – Compile and file appropriate inspections and quality control documentation.

5. POLICY


Procedure for installing Epic 360 Tanks.

5.1 Prepare Surface Area

- Assure ground surface is within 1” of level grade. This is checked by the On-Site Epic Supervisor.
- If level, find the center of tank location and mark ground with paint. Determine radius of tank and mark ground for footprint of the tank.
- Obtain textile and appropriate liner, as determined by customer or internal specifications.

5.2 Ground Cover Installation

- Determine whether the tank requires a secondary containment to achieve 110% containment, spill containment, or tank only installation.

	Mustang Extreme Environmental Services, LLC		Pg. 4 of 5
	MEES-003	Rev: 01	

- Apply textile to the entire footprint of the tank, including secondary tank if applicable. Re-mark the painted footprint on top of the textile to serve as a guide for the wall panel placement.
- Apply liner material over the textile extending it 15 feet past the edge of the tank footprint.
- Fold the liner back toward the center of the tank footprint allowing sufficient space to place the wall panels.

5.3 Tank Wall Assembly


- Panels weight 8,600 lbs. each. A 10,000--11,000 lb Telehandler or greater must be used when handling and installing these panels. Use **Extreme Caution** when performing this process.
- Wall Assembly cannot take place if winds exceed 15 mph.
- Hold a safety meeting to determine who the signal person will be. The designated signal person will be the **ONLY** person to give direction to the Telehandler operator. However, anyone can give the **STOP** signal.
- Using rate and certified lift chains, attach two (2) hooks to the top of the wall panel.
- Attach tag lines to the bottom of the wall panel to assist in guiding the panel during installation.
- Equipment operator will place the wall panel in its designated location. While still supported by chains and the telehandler, install six (6) braces on the wall panel – three (3) braces on the inside of the wall and three (3) on the outside of the wall. Once the braces are installed, the lift chains can be removed.
- Install second wall panel following the same process. Once the second wall panel is in place, bolt the panels together. Be sure to leave the braces in place until at least half of the panels are installed.
- Repeat this process until the entire circumference is complete.

5.4 Tank Liner Installation

- The On-Site Supervisor and Safety Coordinator will determine if entry into the tank would be considered “confined space entry”. If designated as such, a confined space permit will be obtained and only those designated personnel will be permitted to enter.
- Liner install cannot take place if winds are over 10-15 mph.
- Attach pull line to the edge of the liner and pull line over top of the wall panels.
- Secure liner to the top of the wall panels using the (3) clamps per panel. While clamping, inspect the liner to ensure it is not in a “stressed” condition and be sure to leave enough slack so that the liner can conform to the walls once the tank is filled with water.
- Trim any excess liner material from the outer edge of the tank wall

5.5 Final Installation

- The tank is now ready for the necessary access ladders and discharge hoses to be installed.
- Remove all excess material from the property and dispose of appropriately.

	Mustang Extreme Environmental Services, LLC		Pg. 5 of 5
	MEES-003	Rev: 01	

5.6 Final Inspection

- The Quality Director will inspect the completed build to ensure that it was built to the customer specifications.

6. APPLICABLE REFERENCES

- Epic Tank Supervisor

DESIGN/CONSTRUCTION PLAN
O&M PLAN
CLOSURE PLAN

Design and Construction Plan Above Ground Tank (AST) Containments

General

Examination of the engineering drawings and the SOP for set-up (Appendix Engineering Drawings, Liner Specifications, Set Up) plus the history of solid performance of these AST Containments demonstrates that the AST Containment is designed and will be assembled to ensure the confinement of produced water, to prevent releases and to prevent overtopping due to wave action or rainfall. As the AST Containments are generally less than 190 feet in diameter, wave action is not a meaningful consideration.

These AST Containments are constructed of 12-foot high steel panels and are netted or employ the Mega Blaster Pro avian deterrent system to prevent ingress of migratory birds. AST Containments will be enclosed by a 4-strand barbed wire fence. Thus, complies with the Rule to fence or enclose a recycling containment in a manner that deters unauthorized wildlife and human access and shall maintain the fences in good repair.

The operator shall post an upright sign no less than 12 inches by 24 inches with lettering not less than two inches in height in conspicuous places surrounding the containment. The operator shall post the sign in a manner and location such that a person can easily read the legend. The sign shall provide the following information: the operator's name, the location of the site by quarter-quarter or unit letter, section, township and range, and emergency telephone numbers.

Site Preparation

Foundation for AST Containment

Preparation of the soils on site is required to form a dependable base for the AST Containment in accordance with the SOP. If the location of the AST Containment is on an existing pad, the operator has stripped and stockpiled the topsoil for use as the final cover or fill at the time of closure. If the pad is new construction, the operator will strip and stockpile the soil for reclamation upon cessation of site activities.

19.15.34.12 A

(1) The operator shall design and construct a recycling containment to ensure the confinement of produced water, to prevent releases and to prevent overtopping due to wave action or rainfall.

19.15.34.12 D

(1) The operator shall fence or enclose a recycling containment in a manner that deters unauthorized wildlife and human access and shall maintain the fences in good repair. The operator shall ensure that all gates associated with the fence are closed and locked when responsible personnel are not onsite.

19.15.34.12 C

Signs. The operator shall post an upright sign no less than 12 inches by 24 inches with lettering not less than two inches in height in a conspicuous place on the fence surrounding the containment. The operator shall post the sign in a manner and location such that a person can easily read the legend. The sign shall provide the following information: the operator's name, the location of the site by quarter-quarter or unit letter, section, township and range, and emergency telephone numbers.

19.15.34.12 B

Stockpiling of topsoil. Prior to constructing containment, the operator shall strip and stockpile the topsoil for use as the final cover or fill at the time of closure.

Design and Construction Plan Above Ground Tank (AST) Containments

The foundation soils must be roller compacted smooth and free of loose aggregate over ½ inch. Compaction characteristics must meet or exceed 95% of Standard Proctor Density in accordance with ASTM D 698.

Examination of the SOP shows that the AST Containment contractor will conform to the following mandates of the Rule:

- the AST Containment will have a properly constructed compacted earth foundation and interior slopes (vertical steel) consisting of a firm, unyielding base, smooth and free of rocks, debris, sharp edges or irregularities to prevent the liner's rupture or tear.
- Geotextile will be placed under the liner where needed to reduce localized stress-strain or protuberances that otherwise may compromise the liner's integrity.
- If the AST Containment contractor constructs the containment in a levee, the inside grade is no steeper than two horizontal feet to one vertical foot (2H: 1V) and the outside grade no steeper than three horizontal feet to one vertical foot (3H: 1V). The vertical steel walls of the AST Containment are the *subject of a requested variance*.

The Operator will ensure that at a point of discharge into or suction from the recycling containment, the liner is protected from excessive hydrostatic force or mechanical damage and external discharge or suction lines shall not penetrate the liner.

Liner and Leak Detection Materials

The liner and geotextile specifications show that all primary (upper) liners in a recycling containment shall be geomembrane liners composed of an impervious, synthetic material that is resistant to ultraviolet light, petroleum hydrocarbons, salts and acidic and alkaline solutions. All primary liners shall be *an equivalent liner [to that stated in Rule 34] approved by OCD pursuant to a variance*. The liner system is presented in an earlier section of this submission.

All secondary liners shall be *an equivalent liner [to that stated in Rule 34] approved by OCD pursuant to a*

19.15.34.12 A

(2) A recycling containment shall have a properly constructed foundation and interior slopes consisting of a firm, unyielding base, smooth and free of rocks, debris, sharp edges or irregularities to prevent the liner's rupture or tear. Geotextile is required under the liner when needed to reduce localized stress-strain or protuberances that otherwise may compromise the liner's integrity. The operator shall construct the containment in a levee with an inside grade no steeper than two horizontal feet to one vertical foot (2H:1V). The levee shall have an outside grade no steeper than three horizontal feet to one vertical foot (3H:1V). The top of the levee shall be wide enough to install an anchor trench and provide adequate room for inspection and maintenance.

19.15.34.12 A

(6) At a point of discharge into or suction from the recycling containment, the operator shall insure that the liner is protected from excessive hydrostatic force or mechanical damage. External discharge or suction lines shall not penetrate the liner.

19.15.34.12 A

(4) All primary (upper) liners in a recycling containment shall be geomembrane liners composed of an impervious, synthetic material that is resistant to ultraviolet light, petroleum hydrocarbons, salts and acidic and alkaline solutions. All primary liners shall be 30-mil flexible PVC, 45-mil LLDPE string reinforced or 60-mil HDPE liners. Secondary liners shall be 30-mil LLDPE string reinforced or equivalent with a hydraulic conductivity no greater than 1×10^{-9} cm/sec. Liner compatibility shall meet or exceed the EPA SW-846 method 9090A or subsequent relevant publications.

Design and Construction Plan Above Ground Tank (AST) Containments

variance. The liner system is presented in an earlier section of this submission.

Liner compatibility shall meet or exceed the EPA SW-846 method 9090A or subsequent relevant publications.

The AST Containment will have a leak detection system between the upper and lower geomembrane liners that shall consist of 200-mil geonet to facilitate drainage.

Install Secondary Liner, Leak Detection System and Secondary Containment

All AST containments holding produced water will have a primary (upper) liner and a secondary (lower) liner with a leak detection system appropriate to the site's conditions. The rule states that the edges of all secondary liners shall be anchored in the bottom of a compacted earth-filled trench. The anchor trench shall be at least 18 inches deep. *The lack of an anchor trench with an AST Containment is also the subject of requested variance.*

The AST Containment Contractor will cause the recycling containment will have a leak detection system between the upper and lower geomembrane liners that shall consist of 200-mil geonet to facilitate drainage. The leak detection system shall consist of a properly designed drainage and collection and removal system placed above the lower geomembrane liner in depressions and sloped to facilitate the earliest possible leak detection.

The presence of the secondary containment levee or pre-fabricated secondary containment meets the OCD Rule mandate that a recycling containment shall design the containment to prevent run-on of surface water. The containment shall be surrounded by a berm, ditch or other diversion to prevent run-on of surface water.

AST Containment Setup

As with the secondary liner, AST Containment contractor will minimize liner seams and orient them up and down, as much as possible, not across, a slope. Factory welded seams shall be used where possible. AST Containment contractor will employ field seams in

19.15.34.12 A

(3) Each recycling containment shall incorporate, at a minimum, a primary (upper) liner and a secondary (lower) liner with a leak detection system appropriate to the site's conditions. The edges of all liners shall be anchored in the bottom of a compacted earth-filled trench. The anchor trench shall be at least 18 inches deep.

19.15.34.12 A

(7) The operator of a recycling containment shall place a leak detection system between the upper and lower geomembrane liners that shall consist of 200-mil geonet or two feet of compacted soil with a saturated hydraulic conductivity of 1×10^{-5} cm/sec or greater to facilitate drainage. The leak detection system shall consist of a properly designed drainage and collection and removal system placed above the lower geomembrane liner in depressions and sloped to facilitate the earliest possible leak detection.

19.15.34.12 A

(8) The operator of a recycling containment shall design the containment to prevent run-on of surface water. The containment shall be surrounded by a berm, ditch or other diversion to prevent run-on of surface water.

19.15.34.12 A

(5) The operator of a recycling containment shall minimize liner seams and orient them up and down, not across, a slope of the levee. Factory welded seams shall be used where possible. The

Design and Construction Plan Above Ground Tank (AST) Containments

geosynthetic material that are thermally seamed. Prior to field seaming, AST Containment contractor shall overlap liners four to six inches and minimize the number of field seams and corners and irregularly shaped areas. There shall be no horizontal seams within five feet of the AST Containment bottom. Qualified personnel shall perform field welding and testing.

Fluid Injection/Withdrawal Flow Diverter

The injection or withdrawal of fluids from the containment shall be accomplished through a header, diverter or other hardware that prevents damage to the liner by erosion, fluid jets or impact from installation and removal of hoses or pipes.

operator shall ensure field seams in geosynthetic material are thermally seamed. Prior to field seaming, the operator shall overlap liners four to six inches. The operator shall minimize the number of field seams and corners and irregularly shaped areas. There shall be no horizontal seams within five feet of the slope's toe. Qualified personnel shall perform field welding and testing.

19.15.34.13 B

(3) The injection or withdrawal of fluids from the containment shall be accomplished through a header, diverter or other hardware that prevents damage to the liner by erosion, fluid jets or impact from installation and removal of hoses or pipes.

Operations and Maintenance Plan Above Ground Tank Containment (AST)

General Specifications

This plan provides additional protocols to cause the proposed recycling containments (AST Containments) to conform to NMOCD Rules.

The operator will maintain and operate the recycling containments and facility in accordance with the following plan to contain liquids and maintain the integrity of the liner to prevent contamination of fresh water and protect public health and the environment.

- The operator will use the treated produced water in the containments for drilling, completion (stimulation), producing or processing oil or gas or both. If other uses are planned, the operator will notify the OCD through the submission of a modified C-147.
- For all exploration and production operations that use produced water, the operator will conduct these activities in a manner consistent with hydrogen sulfide gas provisions in 19.15.11 NMAC or NORM provisions in 19.15.35 NMAC, as applicable.
- The operator will address all releases from the recycling and re-use of produced water in accordance with 19.15.29 NMAC.
- The operator will not discharge into or store any hazardous waste in the recycling containments, but they may hold fluids such as freshwater, brackish water, recycled and treated water, water generated by oil or gas processing facilities, or other waters that are gathered for well drilling or completion. The recycling facility will not be used for the disposal of produced water. The operator will maintain the containments free of miscellaneous solid waste or debris.
- The operator will verify that no oil is on the surface of the contained fluid. If oil is observed, the oil shall be removed using an absorbent boom or other device and properly disposed at an approved facility. An absorbent boom or other device will be maintained on site.
- The operator will install and use a header and diverter described in the design/construction plan in order to prevent damage to the liner by erosion, fluid

19.15.34.10 B

Recycling containments may hold produced water for use in connection with drilling, completion, producing or processing oil or gas or both.

19.15.34.8 A

(5) All operations in which produced water is used shall be conducted in a manner consistent with hydrogen sulfide gas provisions in 19.15.11 NMAC or NORM provisions in 19.15.35 NMAC, as applicable.

19.15.34.8 A

(6) All releases from the recycling and re-use of produced water shall be handled in accordance with 19.15.29 NMAC.

19.15.34.10 B

Recycling containments may hold produced water for use in connection with drilling, completion, producing or processing oil or gas or both. Such fluids may include fresh water, brackish water, recycled and treated water, fluids added to water to facilitate well drilling or completion, water produced with oil and gas, flowback from operations, water generated by an oil or gas processing facility or other waters that are gathered for well drilling or completion but may not include any hazardous waste.

19.15.34.9 G

Recycling facilities may not be used for the disposal of produced water.

19.15.34.13 B

(1) The operator shall remove any visible layer of oil from the surface of the recycling containment
(7) The operator shall install, or maintain on site, an oil absorbent boom or other device to contain an unanticipated release.

19.15.34.13 B

(3) The injection or withdrawal of fluids from the containment shall be accomplished through a header, diverter or other hardware that prevents damage to the liner by erosion, fluid jets or impact from installation and removal of hoses or pipes.

Operations and Maintenance Plan Above Ground Tank Containment (AST)

jets or impact from installation and removal of hoses or pipes during injection or withdrawal of liquids.

- Pursuant to a requested variance, the operator will maintain at least 2-feet of freeboard in each AST containment. Under extenuating circumstances, which will be noted on the inspection log as described below, the operator may temporarily exceed the freeboard mandate.
- If the liner develops a leak or if any penetration of the liner occurs above the liquid's surface, then the operator will repair the damage or initiate replacement of the liner within 48 hours of discovery or will seek a variance from the division district office within this time period.
- If visible inspection suggests that the liner developed a leak or if any penetration of the liner occurs below the liquid's surface, then the operator will remove all liquid above the damage or leak line within 48 hours of discovery. The operator will also notify the district division office within this same 48 hours of the discovery and repair the damage or replace the liner.
- In the event of a leak due to a hole in the liner, the following steps will be followed:
 1. If the source of the fluid is uncertain, comparative field tests may need to be performed on both the water in the containment and that which may have been released (e.g. pH, conductance, and chloride).
 2. If the fluid is found to be coming from the containment, determine the location from which the leak is originating.
 3. Mark the point where the water is coming out of the tank.
 4. Locate the puncture or hole in the liner.
 5. Empty the containment to the point of damage in liner.
 6. Clean area of liner that needs to be repaired.
 7. Cut out piece of material (patch or tape) to overlay liner.

19.15.34.13 B

(2) The operator shall maintain at least three feet of freeboard at each containment.

19.5.34.13 B

(4) If the containment's primary liner is compromised above the fluid's surface, the operator shall repair the damage or initiate replacement of the primary liner within 48 hours of discovery or seek an extension of time from the division district office.

(5) If the primary liner is compromised below the fluid's surface, the operator shall remove all fluid above the damage or leak within 48 hours of discovery, notify the division district office and repair the damage or replace the primary liner.

Operations and Maintenance Plan Above Ground Tank Containment (AST)

8. Either weld the patch to the injured area in the liner or apply tape over the rupture.
9. Make sure rupture is completely covered.
10. Monitor as needed.

The operator will inspect and remove, as necessary, surface water run-on accumulated in the secondary containment

Monitoring, Inspections, and Reporting

The containment will contain enough produced water to prevent any shifting of the liner. Weekly inspections shall occur when there is 1-foot depth or more of produced water in the containment. Monthly inspections shall occur when there is less than 1-foot depth of produced water in the containment, as well as when the ASTs are emptied and prior to refilling. An inspection log will be maintained by the operator and will be made available to the division upon request. Inspection will include: freeboard monitoring, leak detection, identifying potential hazards that may have developed, change in site conditions or if the contents of the containment change from the initial use.

An "Inspection Form" meeting the requirements according to NMAC 19.15.34 is to be filled out during these routine inspections. The form also provides a list of observations that will enable early detection of uneven tank panel settlement, soil settlement, liner damage, insufficient liner slack, or leaks. The form is reproduced at the end of this section.

Weekly inspections consist of:

- Reading and recording the fluid height of staff gauges and freeboard
- Recording any evidence of visible oil on surface
- Visually inspecting the containments exposed liners
- Checking the leak detection system for any evidence of a loss of integrity of the primary liner
- Inspect any diversion ditches and berms around the containment to check for erosion and collection of surface water run-on.
- Inspect the leak detection system for evidence of damage or malfunction and monitor for leakage.

Operations and Maintenance Plan Above Ground Tank Containment (AST)

- Inspect netting (may not be used if Mega Blaster Pro avian deterrent is used) for damage or dead wildlife, including migratory birds. Operator shall report the discovery of a dead animal to the appropriate wildlife agency and to the district within 30 days of discovery. Further prevention measures may be required.

Additional monitoring to identify hazards that may have developed, changes in site conditions, tank use, and to enable early detection of structural issues such as uneven tank panel settlement, soil settlement, liner damage, insufficient liner slack or leaks. If changes are noted the AST contractor should be notified

- If observed conditions indicate a potential tank failure is imminent, the vicinity will be immediately cleared and the AST will be drained.

Monthly, the operator will:

- Report to the division, the total volume of water received for recycling, with the amount of fresh water received listed separately, and the total volume of water leaving the facility for disposition by use on form C-148.
- Record sources and disposition of all recycled water.

Cessation of Operations

If less than 20% of the total fluid capacity is utilized every six months, beginning from the first withdraw, operation of the facility has ceased and the division district office will be notified. The division district may grant an extension not to exceed six months to determine the cessation of operations.

The operator will remove all fluids from the recycling facility within 60 days of cessation of operations. An extension, not to exceed 2 months, may be granted by the district division for the removal of fluids from the facility.

The breakdown of the containments follows the reverse order of the setup steps presented in the set-up manual.

19.15.34.12 E

Netting. The operator shall ensure that a recycling containment is screened, netted or otherwise protective of wildlife, including migratory birds. The operator shall on a monthly basis inspect for and, within 30 days of discovery, report the discovery of dead migratory birds or other wildlife to the appropriate wildlife agency and to the division district office in order to facilitate assessment and implementation of measures to prevent incidents from reoccurring.

19.15.34.13 C

A recycling containment shall be deemed to have ceased operations if less than 20% of the total fluid capacity is used every six months following the first withdrawal of produced water for use. The operator must report cessation of operations to the appropriate division district office. The appropriate division district office may grant an extension to this determination of cessation of operations not to exceed six months.

19.15.34.14 A

Once the operator has ceased operations, the operator shall remove all fluids within 60 days and close the containment within six months from the date the operator ceases operations from the containment for use. The division district office may grant an extension for the removal of all fluids not to exceed two months.

Closure Plan

Above Ground Tank Containment (AST)

Closure Plan

The containments are expected to contain a small volume of solids, the majority of which will be windblown sand and dust with some mineral precipitates from the water.

The operator will notify the division district (phone or email) before initiating closure of the containments and/or facility.

Excavation and Removal Closure Plan – Protocols and Procedures

1. Residual fluids in the containments will be sent to disposal at a division-approved facility.
2. The operator will remove all solid contents and transfer those materials to the following division-approved facility:
3. If possible, geomembrane textiles and liners that exhibit good integrity may be recycled for use as an under liner of tank batteries or other use as approved by OCD.
4. Disassemble the recycling containment infrastructure according to manufacturer's recommendations
5. After the disassemble of the containments and removal of the contents and liners, soils beneath the tanks will be tested as follows
 - a. Collect a five-point (minimum) composite from beneath the liner to include any obviously stained or wet soils, or any other evidence of impact from the containments for laboratory analyses for the constituents listed in Table I of 19.15.34.14 NMAC.
 - b. If any concentration is higher than the parameters listed in Table I, additional delineation may be required, and closure activities will not proceed without Division approval.
 - c. If all constituents' concentrations are less than or equal to the parameters listed in Table I, then the operator will backfill the facility as necessary using non-waste containing, uncontaminated, earthen material and proceed to reclaim the surface to pre-existing conditions.

Closure Documentation

Within 60 days of closure completion, the operator will submit a closure report (Form C-147) to the District Division, with necessary attachments to document all closure activities are complete, including sampling results and details regarding backfilling and capping as necessary.

19.15.34.14 B

The operator shall close a recycling containment by first removing all fluids, contents and synthetic liners and transferring these materials to a division approved facility.

19.15.34.14 C

The operator shall test the soils beneath the containment for contamination with a five-point composite sample which includes stained or wet soils, if any, and that sample shall be analyzed for the constituents listed in Table I below.

(1) If any contaminant concentration is higher than the parameters listed in Table I, the division may require additional delineation upon review of the results and the operator must receive approval before proceeding with closure.

(2) If all contaminant concentrations are less than or equal to the parameters listed in Table I, then the operator can proceed to backfill with non-waste containing, uncontaminated, earthen material.

19.15.34.14 D

Within 60 days of closure completion, the operator shall submit a closure report on form C-147, including required attachments, to document all closure activities including sampling results and the details on any backfilling, capping or covering, where applicable. The closure report shall certify that all information in the report and attachments is correct and that the operator has complied with all applicable closure requirements and conditions specified in division rules or directives.

Closure Plan Above Ground Tank Containment (AST)

In the closure report, the operator will certify that all information in the report and attachments is correct and that the operator has complied with all applicable closure requirements and conditions specified in the closure plan.

Reclamation and Re-vegetation

The operator will reclaim the surface to safe and stable pre-existing conditions that blends with the surrounding undisturbed area. "Pre-existing conditions" may include a caliche well pad that existed prior to the construction of the recycling containment and that supports active oil and gas operations.

Areas not reclaimed as described herein due to their use in production or drilling operations will be stabilized and maintained to minimize dust and erosion.

For all areas disturbed by the closure process that will not be used for production operations or future drilling, the operator will substantially restore the surface to the condition that existed prior to the construction of the recycling containment:

1. Replace topsoils and subsoils to their original relative positions
2. Contour so as to achieve erosion control, long-term stability and preservation of surface water flow patterns
3. Reseed in the first favorable growing season following closure

Federal, state trust land, or tribal lands may impose alternate reclamation and re-vegetation obligations that provide equal or better protection of fresh water, human health, and the environment. Re-vegetation and reclamation plans imposed by the surface owner will be outlined in communications with the OCD.

The operator will notify the division when the site meets the surface owner's requirements or exhibits a uniform vegetative cover that reflects a life-form ratio of plus or minus fifty percent (50%) of pre-disturbance levels and a total percent plant cover of at least seventy percent (70%) of pre-disturbance levels, excluding noxious weeds. The operator will notify the Division when reclamation and re-vegetation is complete.

19.15.34.14 E

Once the operator has closed the recycling containment, the operator shall reclaim the containment's location to a safe and stable condition that blends with the surrounding undisturbed area. Topsoils and subsoils shall be replaced to their original relative positions and contoured so as to achieve erosion control, long-term stability and preservation of surface water flow patterns. The disturbed area shall then be reseeded in the first favorable growing season following closure of a recycling containment. The operator shall substantially restore the impacted surface area to the condition that existed prior to the construction of the recycling containment.

19.15.34.14 G

The re-vegetation and reclamation obligations imposed by federal, state trust land or tribal agencies on lands managed by those agencies shall supersede these provisions and govern the obligations of any operator subject to those provisions, provided that the other requirements provide equal or better protection of fresh water, human health and the environment.

19.15.34.14 F

Reclamation of all disturbed areas no longer in use shall be considered complete when all ground surface disturbing activities at the site have been completed, and a uniform vegetative cover has been established that reflects a life-form ratio of plus or minus fifty percent (50%) of pre-disturbance levels and a total percent plant cover of at least seventy percent (70%) of pre-disturbance levels, excluding noxious weeds.

Variances for AST Containment Design

40-mil LLDPE as Primary and Secondary Liners

R.K. FROBEL & ASSOCIATES
Consulting Engineers

**Technical Memorandum: 40-mil LLDPE as Alternative
Primary/Secondary Liner System for Modular Steel AST Recycling
Containment**

NMAC 19.15.34.12 A (4)

In consideration of the Primary lining application (modular AST impoundment), size of the AST and depth, design details for modular tanks as well as estimated length of up to five years of service time, it is my professional opinion that a 40 mil LLDPE geomembrane will provide the requisite barrier against processed water loss. It should be noted that the 40 mil LLDPE exceeds the OCD mandate for a Secondary lining system. *The two proposed 40 mil LLDPE liners will function equal to or better than 45 mil String Reinforced LLDPE, 30 mil PVC, or 60 mil HDPE liners as a primary liner and 30 mil LLDPE string reinforced as a secondary liner system. Additionally, the 40 mil LLDPE in a two-layer system will provide requisite protection for the environment that is equal to or better than the above primary and secondary liner systems referenced in OCD rule 34.* The following are discussion points that will exhibit the attributes of a 40 mil LLDPE lining system:

The nature and formulation of LLDPE resin is very similar to HDPE. The major difference is that LLDPE is lower density, lower crystallinity (more flexible and less chemical resistant). However, LLDPE will resist aging and degradation and remain intact for many years in exposed conditions. The LLDPE resin is virtually the same for non-reinforced 40 mil LLDPE and string reinforced 45 mil LLDPE geomembranes and both will provide requisite containment and be equally protective for this application.

Flexibility Requirements. Non-reinforced LLDPE geomembranes are less stiff and far more flexible than string reinforced geomembranes as well as 60 mil HDPE and in this regard are preferred for installations in vertical wall tanks such as this proposed installation. LLDPE provides a very flexible sheet that enables it to be fabricated into large panels, folded for shipping and installed on vertical walls transitioned to flat bottom. Non-reinforced LLDPE sheet will conform better than a string reinforced LLDPE to the tank dimensions under hydrostatic loading and will exhibit less wrinkling and creasing during and after installation.

Thermal Fusion Seaming Requirements. Thermal seaming and QC seam test requirements for geomembranes are product specific and usually prescribed by the sheet manufacturer. Both dual wedge and single wedge thermal fusion welding is commonly used on LLDPE and QC testing by air channel (ASTM D 5820) or High Pressure Air Lance (ASTM D 4437) is fully acceptable and recognized as industry standards. In this regard, either non-reinforced LLDPE or string-reinforced LLDPE will be acceptable as far as QC and thermal fusion seaming methods are concerned.

Potential for Leakage through the Primary and Secondary Liners. Leakage through geomembrane liners is directly a function of the height of liquid head above any hole or imperfection. The geonet drainage media between the primary and secondary LLDPE

R.K. FROBEL & ASSOCIATES
Consulting Engineers

geomembranes at the base of the AST in this application provides immediate drainage to a low point or outside the Modular AST Impoundment and thus no hydrostatic head or driving gradient is available to push leakage water through a hole in the Secondary LLDPE liner .

Leakage through any Primary geomembrane is driven by size of hole and depth and will be detected by the increase of water in the drainage system and the volume being pumped out of the secondary containment. In this regard and for this variance, the Primary consists of 40 mil LLDPE geomembrane which will perform equal to or better than a single layer of string reinforced LLDPE for potential leakage. Thus, if a leak occurs through the top layer, it will be effectively contained by the second layer of 40 mil LLDPE geomembrane. If required, location of holes in the Primary can be found by Electrical Leak Location Survey (ELLS) using a towed electrode (ASTM D 7007). Holes found can then be repaired and thus water seepage into the leakage collection and drainage system will be kept to a minimum. Dependent on OCR requirements for Action Leakage Rate (ALR), the leakage volumes may only be monitored. For example, a typical ALR is < 20 gpad whereas a rapid and large leak (RLL) may be > 100 gpad. Most states specify maximum ALR values for waste and process water impoundments usually in the range of 100 to 500 gpad. However, New Mexico does not specify an ALR for waste or process water impoundments (GRI Paper No. 15).

Both non-reinforced LLDPE and string reinforced LLDPE can be prefabricated into large panels and thus both types offer the following for Containment:

- Prefabrication in factory-controlled conditions into very large panels (up to 30,000 sf) results in ease of installation, less thermal fusion field seams and less on site QC and CQA. (It should be noted that HDPE cannot be prefabricated into panels and requires considerably more on-site welding and QC).
- Large prefabricated panels will provide better control of thermal fusion welding in a factory environment that will improve the liner system integrity for the long term. Ease of installation of large prefabricated custom size panels results in a greater reduction of installation time and associated installation and QC costs
- The Non-reinforced LLDPE geomembrane provides superior lay flat characteristics and conformability which allows for more intimate contact with the underlying soil, geonet, or geotextile and tank walls as well as overlying materials thus providing better flow characteristics for drainage of water. String reinforced LLDPE exhibits more wrinkling and when overlaid or in contact with a geonet drain, wrinkles tend to form pockets and dams affecting drainage of any leakage water to the exterior of the Modular AST Impoundment.
- Both types of LLDPE geomembrane are easily repaired using the same thermal fusion bonding method without the need for special surface grinding/preparation for extrusion welding as is typically used in repair of HDPE geomembranes.

R.K. FROBEL & ASSOCIATES
Consulting Engineers

However, string reinforced LLDPE requires that all cut edges with exposed scrim must be encapsulated with extrusion bead. No encapsulation is required on non-reinforced LLDPE.

In summary, it is my professional opinion that the two layers of 40 mil non-reinforced LLDPE geomembranes will provide a Primary/Secondary liner system that is equal to or better than 45 mil string reinforced LLDPE, 30 mil PVC, 60 mil HDPE (primary liner) and 35 mil LLDPE (secondary liner). Additionally, the two layers of 40 mil LLDPE will provide a superior installation and function better than liners referenced in the OCD rule. The two layers of 40 mil non-reinforced LLDPE will provide the requisite protection of fresh water, public health and the environment for at least 5 years in the frack water environment.

If you have any questions on the above technical memorandum or require further information, give me a call at 720-289-0300 or email geosynthetics@msn.com

Sincerely Yours,

R K Frobel

Ronald K. Frobel, MSCE, PE



References:

NMAC 19.15.34.12 DESIGN AND CONSTRUCTION SPECIFICATIONS FOR A RECYCLING CONTAINMENT

Geosynthetic Research Institute (GRI) Published Standards and Papers 2018

ASTM Standards 2018

Attachments:

R. K. Frobel C.V

***Slope and Anchor Variance Request for Above Ground
Steel Tank Modular Recycling Storage Containments***

STATEMENT EXPLAINING WHY THE APPLICANT SEEKS A VARIANCE FOR SLOPE AND ANCHOR FOR MODULAR STEEL AST CONTAINMENT

Statement Explaining Why the Applicant Seeks a Variance

The prescriptive mandates of the Rule that are the subject of this variance request are the following subsections of NMAC 19.15.34.12.

NMAC 19.15.34.12 DESIGN AND CONSTRUCTION SPECIFICATIONS FOR A RECYCLING CONTAINMENT:

A. An operator shall design and construct a recycling containment in accordance with the following specifications.

(2) A recycling containment shall have a properly constructed foundation and interior slopes consisting of a firm, unyielding base, smooth and free of rocks, debris, sharp edges or irregularities to prevent the liner's rupture or tear. Geotextile is required under the liner when needed to reduce localized stress-strain or protuberances that otherwise may compromise the liner's integrity. *The operator shall construct the containment in a levee with an inside grade no steeper than two horizontal feet to one vertical foot (2H:1V). The levee shall have an outside grade no steeper than three horizontal feet to one vertical foot (3H:1V).* The top of the levee shall be wide enough to install an anchor trench and provide adequate room for inspection and maintenance.

(3) Each recycling containment shall incorporate, at a minimum, a primary (upper) liner and a secondary (lower) liner with a leak detection system appropriate to the site's conditions. *The edges of all liners shall be anchored in the bottom of a compacted earth-filled trench. The anchor trench shall be at least 18 inches deep.*

The applicant requests a variance to prescribed slope and anchor in the setting of above ground modular steel containments.

With respect to storage of produced water for use in lieu of fresh water, Rule 34 is written for earthen, lined pits, not free-standing modular impoundments that employ liners as their primary fluid containment system. A modular impoundment consists of a professionally designed steel tank ring with vertical walls. There is no slope to consider as the segmental steel sections are set vertical.

There is no anchor trench as envisioned by the Rule, liners are anchored to the top of the steel walls with clips, no anchor trench is required.

Demonstration That the Variance Will Provide Equal or Better Protection of Fresh Water, Public Health and the Environment

The following technical memorandum provides supportive data to demonstrate equal or better protection of fresh water, public health and the environment by providing the requisite containment and protection.

R.K. FROBEL & ASSOCIATES
Consulting Engineers

Technical Memorandum: Slope and Anchor Trench Variance for Above Ground Steel Modular Containments

NMAC 19.15.34.12 A (2), (3)

Side Slope

The design of soil side slope (inclination) is a geotechnical engineering design consideration. Liquid impoundments such as fresh water or process water containments are usually built within an excavation or with raised earthen embankments. For a liquid impoundment with an exposed liner system, the slope soils and construction dictate slope inclination and very detailed slope stability analysis may be required to determine if slope failure within the embankment will occur once loaded with impounded water. Slope failure may also occur during construction or when the impoundment is empty. A maximum slope is usually specified and is dependent on soil type and cohesive strength, saturated or unsaturated conditions, etc. Detailed analysis for slope stability can be found in "Designing with Geosynthetics" by R.M Koerner as well as many geotechnical books.

A modular impoundment, on the other hand, consists of a professionally designed steel tank ring with vertical walls. *There is no slope to consider as the segmental steel sections are set vertical.* Design of steel tanks, in regard to hydrostatic loading, wind loading, seismic loads, etc. are thoroughly referenced with detailed procedures in the design code - American Petroleum Institute (API) 650-98 "Welded Steel Tanks for Oil Storage". *There are no requirements for maximum slope inclination other than perhaps 90 degrees or vertical wall.*

Anchor Trench

All earthen impoundments with a geomembrane lining system require some form of top of slope anchor, the most common of which is an excavated and backfilled anchor trench usually set back at least 3 ft from the top of slope. Again, there are detailed procedures for anchor trench design in "Designing with Geosynthetics" by R.M Koerner.

A Modular Impoundment requires mechanical anchoring of the geomembrane at the top of the vertical steel wall using standard liner clips that prevent the geomembrane or geomembrane layers from slipping down the side wall. These are detailed in the Tank Installation Manual. *There are no requirements for an "anchor trench" as this is not an in-ground impoundment.*

In summary, based on the design and specifications of a modular steel impoundment, there is no requirement for a maximum interior slope angle of 2H:1V due to the fact that this impoundment is a steel tank with vertical walls. Additionally, there is no requirement for an anchor trench as the geomembrane is attached to the top of the Modular Impoundment vertical walls with large steel clips. This provides the requisite protection of fresh water, public health and the environment for many years.

R.K. FROBEL & ASSOCIATES
Consulting Engineers

If you have any questions on the above technical memorandum or require further information, give me a call at 303-679-0285 or email geosynthetics@msn.com

Sincerely Yours,

R K Frobel

Ronald K. Frobel, MSCE, PE



References:

NMAC 19.15.34.12 DESIGN AND CONSTRUCTION SPECIFICATIONS FOR A RECYCLING CONTAINMENT

American Petroleum Institute (API) 650-98 "Welded Steel Tanks for Oil Storage"

Koerner, R.M., 2005 "Designing With Geosynthetics" Prentice Hall Publishers

Attachments:

R. K. Frobel C.V.

***Freeboard Variance Request for Above Ground Steel Tank
Modular Recycling Storage Containments***

R.K. FROBEL & ASSOCIATES
Consulting Engineers

**Freeboard Requirements for Above Ground Steel Tank Modular
Recycling Storage Containments**
NMAC 19.15.34.13 B (2)

Liquid impoundments such as fresh water or process water containments are usually built within an excavation or with raised earthen embankments. For a liquid impoundment with an exposed liner system, the slope soils and construction dictate slope inclination and very detailed slope stability analysis may be required to determine if slope failure within the embankment will occur once loaded with impounded water. Freeboard or the vertical height between the maximum water surface elevation and the top of slope is important for earthen impoundments. Specified freeboard requirements take into consideration high precipitation events and prevent wave run-up on slopes that result in over-topping and potential saturation of embankments. This is particularly important on large earthen impoundments. Detailed design considerations including freeboard requirements for lined earthen impoundments can be found in "Designing with Geosynthetics" by R.M Koerner as well as other publications on reservoir design.

A modular impoundment, on the other hand, consists of a professionally designed steel tank ring with vertical walls. There is no slope to consider as the segmental steel sections are set vertical. Design of steel tanks as regards hydrostatic loading, wind loading, seismic loads, etc. are thoroughly referenced with detailed procedures in the design code - American Petroleum Institute (API) 650-98 "Welded Steel Tanks for Oil Storage". There are requirements for operational freeboard to prevent over-topping but due to the relatively small surface area and fetch of cylindrical tanks, wave heights are much less than large earthen impoundments. Thus, freeboard is usually within the range of 0.5 to 2 ft. I have reviewed the Tank Design Calculation Summary and regarding the structural stability of the tank walls, a freeboard of 0.5 ft was assumed. Thus, the variance request of 2.0 ft for a Modular Impoundment is well within the Tank Design requirements.

In summary, it is my professional opinion that the design freeboard of 2.0 ft will provide requisite storage volume and prevent overtopping due to wind and wave action, potential seismic events and high precipitation.

If you have any questions on the above technical memorandum or require further information, give me a call at 303-679-0285 or email geosynthetics@msn.com

Sincerely Yours,

R.K. Frobel

Ronald K. Frobel, MSCE, PE

References:

NMAC 19.15.34.13 OPERATIONAL REQUIREMENTS FOR RECYCLING CONTAINMENTS



R.K. FROBEL & ASSOCIATES
Consulting Engineers

American Petroleum Institute (API) 650-98 “Welded Steel Tanks for Oil Storage”

Koerner, R.M., 2005 “Designing With Geosynthetics” Prentice Hall Publishers

Attachments:

R. K. Frobel C.V.

The modular impoundment is designed for use with fluids that are 8.34 pounds/gallon (62.4 pounds per cubic foot) or lighter. Exceeding this specification for fluid weight at full tank capacity (12') could lead to failure at the connection plate(s).

Assuming a freeboard of 0.5 ft (minimum modular impoundment freeboard requirement) the Hydro Pressure (p) of water is 718 pounds per square foot (psf), where

$$\begin{aligned}
 p &= \text{Design Density} \times \text{Height} \\
 &= 62.4 \text{ PCF} \times 11.5 \text{ ft} \\
 (\text{design density} &= 8.34 \frac{\text{lb}}{\text{gal}} \times 7.48 \frac{\text{ft}^3}{\text{gal}})
 \end{aligned}$$

The density of the conditioned produced water is 9.3 pounds/gallon. Assuming a freeboard of 3-ft (19.15.17.12.F(3) NMAC) , the Hydro Pressure (p) of conditioned produced water is 626 psf, where

$$\begin{aligned}
 p &= \text{Design Density} \times \text{Height} \\
 &= 69.64 \text{ PCF} \times 9 \text{ ft} \\
 (\text{design density} &= 9.3 \frac{\text{lb}}{\text{gal}} \times 7.48 \frac{\text{ft}^3}{\text{gal}})
 \end{aligned}$$

Using conditioned produced water with the Pit Rule freeboard requirements of 3-feet results in a Hydro Pressure 92 psf less than the engineered design.

The operator asks the District Division to allow for a 2-foot freeboard, which yields a Hydro Pressure (p) of 696.4 psf, where

$$\begin{aligned}
 p &= \text{Design Density} \times \text{Height} \\
 &= 69.64 \text{ PCF} \times 10 \text{ ft} \\
 (\text{design density} &= 9.3 \frac{\text{lb}}{\text{gal}} \times 7.48 \frac{\text{ft}^3}{\text{gal}})
 \end{aligned}$$

January 2020

***Applicability of Variances for Modular AST Containments
in the Permian Basin of New Mexico***

R.K. FROBEL & ASSOCIATES
Consulting Engineers

Technical Memorandum: Applicability of Variances for Modular AST Containments in the Permian Basin of New Mexico
NMAC 19.15.34.12 A (2)

I have reviewed the most recent historical variances for AST Containments in the document titled “Variances for C-147 Registration Packages Permian Basin of New Mexico” (January 2020) and examined the applicable design drawings and permits for the following modular AST containments located in the Permian Basin of New Mexico.

- C-147 Registration Package for Myox Above Ground Storage Tank Section 32, T25S, R28E, Eddy County (January 20, 2020)
- C-147 Registration Package for Fez Recycling Containment and Recycling Facility Area (100+ acres) Section 8, T25-S, R35-E, Lea County, Volume 2 – Above-Ground Storage Tank Containments
- Hackberry 16 Recycling Containments and Recycling Facility Section 16, T19S, R31E, Eddy County

Locations of the modular containments range from west of the Pecos River to slightly west of Jal, NM. All locations exhibit different surface and subsurface geology, different topography and are of various sizes and volumes. *However, in regard to structural integrity of the base soils that support the AST and in particular the geomembrane containment system, the specification requirements are the same.* The foundation soils must be roller compacted smooth and free of loose aggregate over ½ inch. Compaction characteristics must meet or exceed 95% of Standard Proctor Density in accordance with ASTM D 698. This specification requirement is specific and causes the general or earthworks contractor to meet this standard regardless of the site- specific geology or topography. Provided that the design drawings and associated specifications call out the minimum requirements for subsoils compaction (i.e., 95% Standard Proctor Density – ASTM D 698), the design engineer or owners representative will carry out soils testing on the foundation materials to provide certainty to the AST containment owner that the earthworks contractor has met these obligations.

Thus, provided that the contractor meets the minimum specified requirements for foundation soils preparation and density, the location, geology or depth to groundwater will make no difference in regard to geomembrane liner equivalency as demonstrated by the AST variances presented in this volume and are considered valid for meeting NMOCD Rule 34 requirements for all locations within the Permian Basin of New Mexico.

If you have any questions on the above technical memorandum or require further information, give me a call at 720-289-0300 or email geosynthetics@msn.com

R.K. FROBEL & ASSOCIATES
Consulting Engineers

Sincerely Yours,

R.K. Frobel

Ronald K. Frobel, MSCE, PE

References:

NMAC 19.15.34.12 DESIGN AND CONSTRUCTION SPECIFICATIONS FOR A
RECYCLING CONTAINMENT

ASTM Standards 2019



RONALD K. FROBEL, MSCE, P.E.

**CIVIL ENGINEERING
GEOSYNTHETICS
EXPERT WITNESS
FORENSICS**

FIRM: R. K. FROBEL & ASSOCIATES
Consulting Civil / Geosynthetics Engineers

TITLE: Principal and Owner

PROFESSIONAL

AFFILIATIONS: American Society for Testing and Materials (ASTM) -
Founding member of Committee D 35 on Geosynthetics
Chairman ASTM D35 Subcommittee on Geomembranes 1985-2000
ASTM Award of Merit Recipient/ASTM Fellow - 1992
ASTM D18 Soil and Rock - Special Service Award - 2000
Transportation Research Board (TRB) of The National Academies
Appointed Member A2K07 Geosynthetics 2000 - 2003
National Society of Professional Engineers (NSPE) - Member
American Society of Civil Engineers (ASCE) - Member
Colorado Section - ASCE - Member
International Society of Soil Mechanics and Foundation Engineers
(ISSMFE) - Member
International Geosynthetics Society (IGS) - Member
North American Geosynthetics Society (NAGS) - Member
International Standards Organization (ISO) - Member TC 221
Team Leader - USA Delegation Geosynthetics 1985 - 2001
European Committee for Standardization (CEN) - USA Observer
EPA Advisory Committee on Geosynthetics (Past Member)
Association of State Dam Safety Officials (ASDSO) – Member
U. S. Committee on Irrigation and Drainage (USCID) - Member
Technical Advisory Committee - Geosynthetics Magazine
Editorial Board - Geotextiles and Geomembranes Journal
Fabricated Geomembrane Institute (FGI) – Board of Directors
Co-Chairman International Conference on Geomembranes
Co-Chairman ASTM Symposium on Impermeable Barriers
U.S. Naval Reserve Officer (Inactive)
Registered Professional Engineer – Civil (Colorado)
Mine Safety Health Administration (MSHA) Certified

ACADEMIC

BACKGROUND: University of Arizona: M.S. - Civil Engineering - 1975
University of Arizona: B. S. - Civil Engineering – 1969
Wentworth Institute of Technology: A.S. Architecture – 1966

PROFESSIONAL

EXPERIENCE:

R. K. Frobel & Associates - Consulting Engineers
Evergreen, Colorado, Principal and Owner, 1988 - Present

Chemie Linz AG and Polyfelt Ges.m.b.H., Linz, Austria
U. S. Technical Manager Geosynthetics, 1985 - 1988

U.S. Bureau of Reclamation, Engineering and Research Center
Denver, Colorado, Technical Specialist in Construction
Materials Research and Application, 1978 - 1985

Water Resources Research Center (WRRC), University of Arizona
Tucson, AZ, Associate Research Engineer, 1975 - 1978

Engineering Experiment Station, University of Arizona
Tucson, AZ, Research Assistant, 1974 - 1975

United States Navy, Commissioned Naval Officer, 1970 - 1973

REPRESENTATIVE

EXPERIENCE:

R.K. Frobel & Associates: Civil engineering firm specializing in the fields of geotechnical, geo-environmental and geosynthetics. Expertise is provided to full service civil/geotechnical engineering firms, federal agencies, municipalities or owners on a direct contract, joint venture or sub-consultant basis. Responsibilities are primarily devoted to specialized technical assistance in design and application for foreign and domestic projects such as the following:

Forensics investigations into geotechnical and geosynthetics failures; providing expert report and testimony on failure analysis; providing design and peer review on landfill lining and cover system design, mine waste reclamation, water treatment facilities, hydro-technical canal, dam, reservoir and mining projects, floating reservoir covers; oil and gas waste containment; design of manufacturers technical literature and manuals; development and presentation of technical seminars; new product development and testing; MQA/CQA program design and implementation.

Polyfelt Ges.m.b.H., Linz, Austria and Denver Colorado: As U.S. technical manager, primary responsibilities included technical development for the Polyfelt line of geosynthetics for the U.S. civil engineering market as well as worldwide applications.

U.S. Bureau of Reclamation, Denver, Colorado: As technical specialist, responsibilities included directing laboratory research, design and development investigations into geosynthetics and construction materials for use on large western water projects such as dams, canals, power plants and other civil structures. Included were material research, selection and testing, specification writing, large scale pilot test programs, MQA/CQA program design and supervision of site installations. Prime author or contributor to several USBR technical publications incorporating geosynthetics.

University of Arizona, Tucson, Arizona: As research engineer at the Water Resources Research Center, responsibilities included research, design and development of engineering materials and methods for use in construction of major water projects including potable water reservoirs, canals and distribution systems. Prime author or contributor to several WRRC technical publications.

Northeast Utilities, Hartford, Connecticut: As field engineer for construction at Northeast Utilities, responsibilities included liaison for many construction projects including additions to power plants, construction of substations, erection of fuel oil pipelines and fuel oil storage tanks. Responsibilities also included detailed review, inspection and reporting on numerous construction projects.

U.S. Navy: Commissioned Naval Officer – Nuclear Program

PUBLICATIONS: Over 85 published articles, papers and books.

CONTACT DETAILS:

Ronald K. Frobel, MSCE, P.E.
R. K. Frobel & Associates
Consulting Civil/Geosynthetics Engineers
PO Box 2633
Evergreen, Colorado 80439 USA
Phone 720-289-0300
Email: geosynthetics@msn.com