

N.M. Oil Cons. DIV-Dist. 2
1301 W. Grand Avenue
Alamosa, NM 88210
DEPARTMENT OF THE INTERIOR
BUREAU OF LAND MANAGEMENT
APPLICATION FOR PERMIT TO DRILL OR DEEPENFORM APPROVED
OMB NO. 1004-0136
Expires: February 28, 1995

1A. TYPE OF WORK

DRILL ☒DEEPEN ☐

B. TYPE OF WELL

OIL WELL ☒GAS WELL ☐OTHER ☐SINGLE ZONE ☒MULTIPLE ZONE ☐

2. NAME OF OPERATOR

POGO PRODUCING COMPANY

(RICHARD WRIGHT 915-685-8140)

3. ADDRESS AND TELEPHONE NO.

P.O. BOX 10340 MIDLAND, TEXAS 79702-7340 (915-695-8100)

4. LOCATION OF WELL (Report location clearly and in accordance with any State requirements.)

330' FSL & 2150' FEL SECTION 33 T23S-R31E EDDY CO. NM
At proposed prod. zone SAME

14. DISTANCE IN MILES AND DIRECTION FROM NEAREST TOWN OR POST OFFICE*

Approximately 20 miles East of Loving New Mexico

15. DISTANCE FROM PROPOSED

LOCATION TO NEAREST
PROPERTY OR LEASE LINE, FT.
(Also to nearest drlg. unit line, if any)

330'

18. DISTANCE FROM PROPOSED LOCATION*
TO NEAREST WELL, DRILLING, COMPLETED,
OR APPLIED FOR, ON THIS LEASE, FT.

1160'

16. NO. OF ACRES IN LEASE

640

17. NO. OF ACRES ASSIGNED
TO THIS WELL

40

19. PROPOSED DEPTH

8500'

20. ROTARY OR CABLE TOOLS
ROTARY

21. ELEVATIONS (Show whether DF, RT, GR, etc.)

3410' GR. Carlsbad Controlled Water Basin22. APPROX. DATE WORK WILL START*
WHEN APPROVED

PROPOSED CASING AND CEMENTING PROGRAM

SIZE OF HOLE	GRADE SIZE OF CASING	WEIGHT PER FOOT	SETTING DEPTH	QUANTITY OF CEMENT
25"	Conductor	NA	40'	Cement to surface with Redi-mix.
17 1/2"	H-40 13 3/8"	48	800'*	800 Sx. circulate cement to surface.
11"	J-55 8 5/8"	32	4350'	1500 Sx " " " "
7 7/8"	J-55 5 1/2"	17 & 15.5	8500'	1750 Sx " " " "
			* 827'-840'	

1. Drill 25" hole to 40'. Set 40' of 20" conductor and cement to surface with Redi-mix.
2. Drill 17 1/2" hole to 800'. Run and set 800' of 13 3/8" 48# H-40 ST&C casing. Cement with 600 Sx. of 65/35/6 Class "C" POZ-GEL, tail in with 200 Sx. of Class "C" cement + 2% CaCl + 1/4# Flocele/Sx. circulate cement to surface.
3. Drill 11" hole to 4350'. Run and set 4350' of 8 5/8" 32# J-55 ST&C casing. Cement with 1300 Sx of 5/35/6 Class "C" POZ-GEL + 5% Salt, tail in with 200 Sx. of Class "C" cement + 2% CaCl, + 1/4# Flocele/Sx. circulate cement to surface.
4. Drill 7 7/8" hole to 8500'. Run and set 8500' of 5 1/2" casing as follows: 2500' of 5 1/2" 17# J-55 LT&C, 5000' of 5 1/2" 15.5# J-55 LT&C, 1000' of 5 1/2" 17# J-55 LT&C. Cement in 2 stages with DV Tools at 5800'± & 3700'±. Cement 1st stage with 650 Sx. of Class "H" cement + additives, 2nd stage cement with 600 Sx. of Class "C" cement + 8#'s of Gilsonite/Sx. 3rd stage cement with 400 Sx. of 65/35/6 of Class "C" POZ-GEL, tail in with 100 Sx. of Class "C" cement + 1% CaCl, circulate cement to surface.

ABOVE SPACE DESCRIBE PROPOSED PROGRAM: If proposal is to deepen, give data on present productive zone and proposed new productive zone. If proposal is to drill or deepen directionally, give pertinent data on subsurface locations and measured and true vertical depths. Give blowout preventer program, if any.

SIGNED

TITLE Agent

DATE 02/09/03

(This space for Federal or State office use)

PERMIT NO.

APPROVAL SUBJECT TO
GENERAL REQUIREMENTS AND
STIMULATIONS
ATTACHED

Application approval does not warrant or certify that the applicant holds legal or equitable title to the land on which the well is proposed. Approval would entitle the applicant to conduct operations thereon.

CONDITIONS OF APPROVAL IF ANY:

APPROVED BY B. Linda S. C. Randall TITLE STATE DIRECTOR

DATE APR 21 2003

*See Instructions On Reverse Side

APPROVAL FOR 1 YEAR

DISTRICT I
P.O. Box 1880, Hobbs, NM 88241-1880

DISTRICT II
P.O. Drawer DD, Artesia, NM 88211-0719

DISTRICT III
1000 Rio Brazos Rd., Aztec, NM 87410

DISTRICT IV
P.O. Box 2088, Santa Fe, N.M. 87504-2088

State of New Mexico

Energy, Minerals and Natural Resources Department

OIL CONSERVATION DIVISION

P.O. Box 2088
Santa Fe, New Mexico 87504-2088

Form C-102
Revised February 10, 1994
Submit to Appropriate District Office
State Lease - 4 Copies
Fee Lease - 3 Copies

WELL LOCATION AND ACREAGE DEDICATION PLAT

☐ AMENDED REPORT

API Number	Pool Code 53815	Pool Name SAND DUNES-DELAWARE WEST
Property Code 023597	Property Name STERLING SILVER 33 FEDERAL	Well Number 18
OGRID No. 17891	Operator Name POGO PRODUCING COMPANY	Elevation 3410'

Surface Location

UL or lot No. 0	Section 33	Township 23-S	Range 31-E	Lot Idn	Feet from the 330	North/South line SOUTH	Feet from the 2150	East/West line EAST	County EDDY
--------------------	---------------	------------------	---------------	---------	----------------------	---------------------------	-----------------------	------------------------	----------------

Bottom Hole Location If Different From Surface

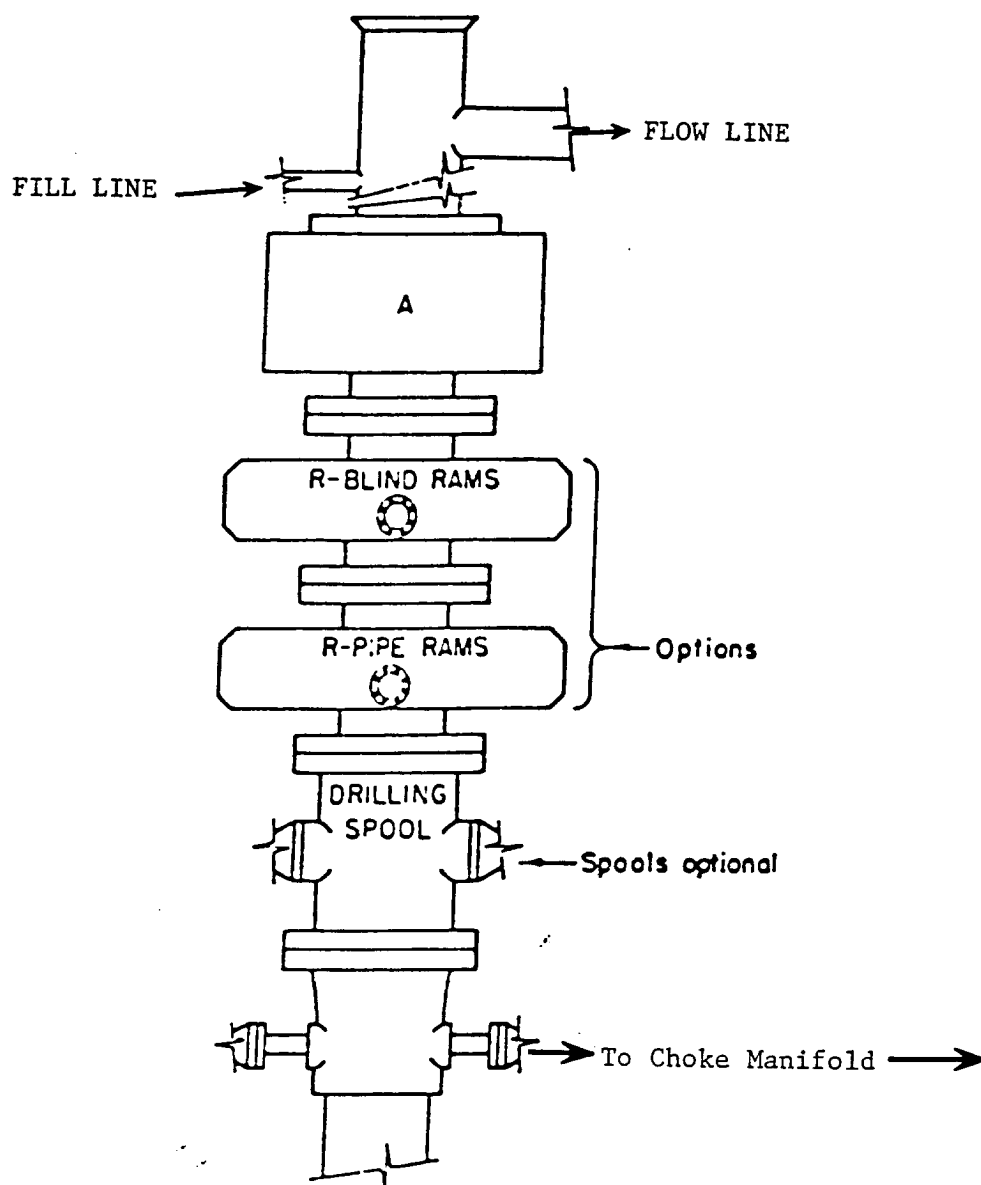
UL or lot No.	Section	Township	Range	Lot Idn	Feet from the	North/South line	Feet from the	East/West line	County
---------------	---------	----------	-------	---------	---------------	------------------	---------------	----------------	--------

Dedicated Acres 40	Joint or Infill	Consolidation Code	Order No.
-----------------------	-----------------	--------------------	-----------

NO ALLOWABLE WILL BE ASSIGNED TO THIS COMPLETION UNTIL ALL INTERESTS HAVE BEEN CONSOLIDATED
OR A NON-STANDARD UNIT HAS BEEN APPROVED BY THE DIVISION

				OPERATOR CERTIFICATION <i>I hereby certify that the information contained herein is true and complete to the best of my knowledge and belief.</i> Signature Joe T. Janica Printed Name Agent Title 02/09/03 Date	
				SURVEYOR CERTIFICATION <i>I hereby certify that the well location shown on this plat was plotted from field notes of actual surveys made by me or under my supervision, and that the same is true and correct to the best of my belief.</i> JANUARY 24, 2003 Date Surveyed Signature & Seal of Professional Surveyor Ronald J. Eidson 03.11.0112 Certificate No. RONALD J. EIDSON 3239 GARY EIDSON 12841	

EXHIBIT "A"



ARRANGEMENT SRRA

900 Series
3000 PSI WP

EXHIBIT "E"
SKETCH OF B.O.P TO BE USED ON

POGO PRODUCING COMPANY
STERLING SILVER "33" FEDERAL # 18
UNIT "O" SECTION 33
T23S-R31E EDDY CO. NM

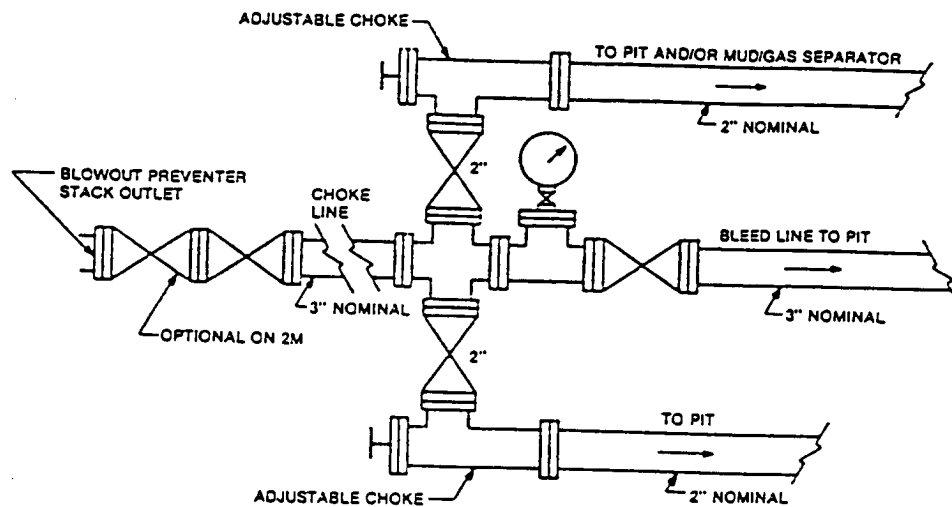


FIGURE K4-1. Typical choke manifold assembly for 2M and 3M rated working pressure service — surface installation.

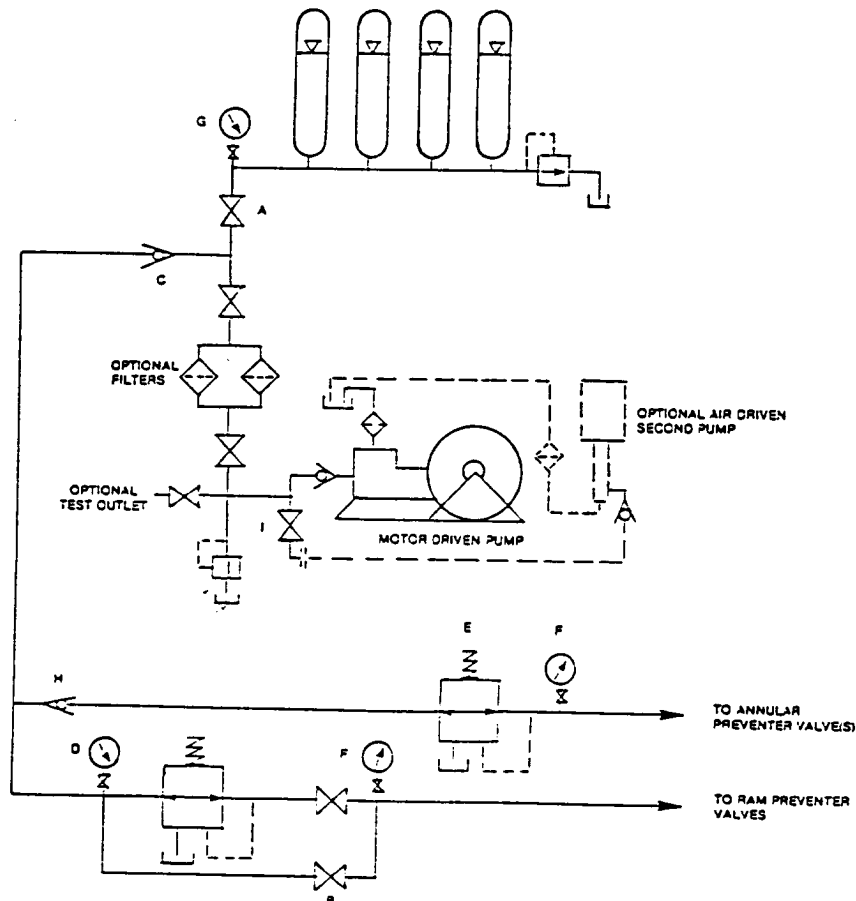


FIGURE K6-1. The schematic sketch of an accumulator system shows required and optional components.

EXHIBIT "E-1"
CHOKE MANIFOLD & CLOSING UNIT

POGO PRODUCING COMPANY
STERLING SILVER "33" FEDERAL # 18
UNIT "O" SECTION 33
T23S-R31E EDDY CO. NM