

District I  
1625 N. French Dr., Hobbs, NM 88240  
District II  
1301 W. Grand Avenue, Artesia, NM 88210  
District III  
1000 Rio Brazos Road, Aztec, NM 87410  
District IV  
1220 S. St. Francis Dr., Santa Fe, NM 87505

State of New Mexico  
Energy Minerals and Natural Resources

Form C-101  
March 4, 2004

Oil Conservation Division  
1220 South St. Francis Dr.  
Santa Fe, NM 87505

Submit to appropriate District Office  
State Lease - 6 Copies  
Fee Lease - 5 Copies

AUG 11 2004

OCD-ARTESIA

☐ AMENDED REPORT

**APPLICATION FOR PERMIT TO DRILL, RE-ENTER, DEEPEN, PLUGBACK, OR ADD A ZONE**

<sup>1</sup> Operator Name and Address POGO PRODUCING COMPANY P.O. BOX 10340 MIDLAND, TEXAS 79702-7340		<sup>2</sup> OGRID Number 17891
		<sup>3</sup> API Number 30 - 015 - 33557
<sup>4</sup> Property Code 9317	<sup>5</sup> Property Name DIMAGGIO	<sup>6</sup> Well No. 11

<sup>7</sup> Surface Location

UL or lot no. H	Section 16	Township 26S	Range 29E	Lot Idn	Feet from the 1980'	North/South line NORTH	Feet from the 760'	East/West line EAST	County EDDY
--------------------	---------------	-----------------	--------------	---------	------------------------	---------------------------	-----------------------	------------------------	----------------

<sup>8</sup> Proposed Bottom Hole Location If Different From Surface

UL or lot no. G	Section 16	Township 26S	Range 29E	Lot Idn	Feet from the 1980'	North/South line NORTH	Feet from the 2310'	East/West line EAST	County EDDY
--------------------	---------------	-----------------	--------------	---------	------------------------	---------------------------	------------------------	------------------------	----------------

<sup>9</sup> Proposed Pool 1 Brushy Draw -DELAWARE (8080)	<sup>10</sup> Proposed Pool 2
--	-------------------------------

Drilling Pit Location and Other Information

UL or lot no. H	Section 16	Township 26S	Range 29E	Lot Idn	Feet from the 1980'	North/South line NORTH	Feet from the 760'	East/West line EAST	County EDDY
--------------------	---------------	-----------------	--------------	---------	------------------------	---------------------------	-----------------------	------------------------	----------------

Depth to ground water 85'	Distance from nearest fresh water well 2.5 miles	Distance from nearest surface water Only dry Arroyos
------------------------------	---	---

<sup>11</sup> Work Type Code N	<sup>12</sup> Well Type Code O	<sup>13</sup> Cable/Rotary ROTARY	<sup>14</sup> Lease Type Code S	<sup>15</sup> Ground Level Elevation 2930'
<sup>16</sup> Multiple NO	<sup>17</sup> Proposed Depth MD 6370' TVD 5500'	<sup>18</sup> Formation	<sup>19</sup> Contractor CAPSTAR	<sup>20</sup> Spud Date WHEN APPROVED

<sup>21</sup> Proposed Casing and Cement Program

Hole Size	Casing Size	Casing weight/foot	Setting Depth	Sacks of Cement	Estimated TOC
25"	20"	NA	40'	Redi-mix	Surface
17½"	13 3/8"	48	550'	650 Sx.	Surface
11"	8 5/8"	24	2800'	900 Sx.	Surface
7 7/8"	5½"	17	6370' MD TVD 5500'	800 Sx.	Est TOC 2000'

<sup>22</sup> Describe the proposed program. If this application is to DEEPEN or PLUG BACK, give the data on the present productive zone and proposed new productive zone. Describe the blowout prevention program, if any. Use additional sheets if necessary.

SEE ATTACHED SHEET

<sup>23</sup> I hereby certify that the information given above is true and complete to the best of my knowledge and belief. I further certify that the drilling pit will be constructed according to NMOCD guidelines ☐ a general permit ☐ or an (attached) alternative OCD-approved plan ☐.

Signature: *Joe T. Janica*

Printed name: Joe T. Janica

Title: Agent

E-mail Address:

Date: 08/10/04

Phone: 505-391-8503

OIL CONSERVATION DIVISION

Approved by:

TIM W. GUM  
DISTRICT II SUPERVISOR

Title:

Approval Date: AUG 17 2004 Expiration Date: AUG 17 2005

Conditions of Approval:

Attached ☐

District I  
1625 N. French Dr., Hobbs, NM 88240  
District II  
1301 W. Grand Avenue, Artesia, NM 88210  
District III  
1000 Rio Brazos Road, Aztec, NM 87410  
District IV  
1220 S. St. Francis Dr., Santa Fe, NM 87505

State of New Mexico  
Energy Minerals and Natural Resources

Oil Conservation Division  
1220 South St. Francis Dr.  
Santa Fe, NM 87505

Form C-144  
March 12, 2004

For drilling and production facilities, submit to appropriate NMOCD District Office.  
For downstream facilities, submit to Santa Fe office

### Pit or Below-Grade Tank Registration or Closure

Is pit or below-grade tank covered by a "general plan"? Yes ☐ No ☒

Type of action: Registration of a pit or below-grade tank ☒ Closure of a pit or below-grade tank ☐

Operator: Pogo Producing Company Telephone: 432-685-8100 e-mail address: wrightc@pogoproducing.com  
Address: P. O. Box 10340, Midland, TX 79702-7340  
Facility or well name: DiMaggio #11 API #: U/L or Qtr/Qtr H Sec 16 T 26 R 29  
County: Eddy Latitude 32 02 39.3N Longitude 103 58 58.8W NAD: 1927 ☒ 1983 ☐ Surface Owner Federal ☐ State ☐ Private ☒ Indian ☐

#### Pit

Type: Drilling ☒ Production ☐ Disposal ☐  
Workover ☐ Emergency ☐

Lined ☒ Unlined ☐

Liner type: Synthetic ☒ Thickness 12 mil Clay ☐ Volume

8400 bbl

#### Below-grade tank

Volume: \_\_\_ bbl Type of fluid: \_\_\_\_\_

Construction material: \_\_\_\_\_

Double-walled, with leak detection? Yes ☐ If not, explain why not.

Depth to ground water (vertical distance from bottom of pit to seasonal high water elevation of ground water.)

Less than 50 feet		(20 points)
50 feet or more, but less than 100 feet	X	(10 points) 10
100 feet or more		(0 points)

Wellhead protection area: (Less than 200 feet from a private domestic water source, or less than 1000 feet from all other water sources.)

Yes		(20 points)
No	X	(0 points) 0

Distance to surface water: (horizontal distance to all wetlands, playas, irrigation canals, ditches, and perennial and ephemeral watercourses.)

Less than 200 feet		(20 points)
200 feet or more, but less than 1000 feet	X	(10 points) 0
1000 feet or more		(0 points)

Ranking Score (Total Points)

10

If this is a pit closure: (1) attach a diagram of the facility showing the pit's relationship to other equipment and tanks. (2) Indicate disposal location:

onsite ☐ offsite ☐ If offsite, name of facility \_\_\_\_\_ (3) Attach a general description of remedial action taken including remediation start date and end date. (4) Groundwater encountered: No ☐ Yes ☐ If yes, show depth below ground surface \_\_\_\_\_ ft. and attach sample results. (5) Attach soil sample results and a diagram of sample locations and excavations.

I hereby certify that the information above is true and complete to the best of my knowledge and belief. I further certify that the above-described pit or below-grade tank has been/will be constructed or closed according to NMOCD guidelines ☒ a general permit ☐, or an (attached) alternative OCD-approved plan ☐.

Date: 08/09/04

Printed Name/Title Cathy Wright, Sr Oper Tech

Signature

*Cathy Wright*

Your certification and NMOCD approval of this application/closure does not relieve the operator of liability should the contents of the pit or tank contaminate ground water or otherwise endanger public health or the environment. Nor does it relieve the operator of its responsibility for compliance with any other federal, state, or local laws and/or regulations.

Approval

Date: AUG 9 2004

Printed Name/Title

Signature

*Field Rep ID*

*[Signature]*



**POGO PRODUCING COMPANY**

August 17, 2004

Oil Conservation Division  
Attn: Mr. Brian Arrant  
1301 W. Grand Ave.  
Artesia, NM 88210

RE: DiMaggio #11  
1980' FNL & 760' FEL  
Section 16, T26S, R29E  
Eddy County, NM  
30-015-33557  
H2S Contingency Plan

Mr. Arrant:

Pogo Producing Company has done extensive drilling in the Brushy Draw Delaware field. Pogo has yet to find H2S bearing formations. As a matter of precaution H2S monitoring equipment is on location while drilling the evaporite section.

Sincerely,

POGO PRODUCING COMPANY

Barrett L. Smith  
Division Operations Engineer

POGO PRODUCING COMPANY  
DIMAGGIO #11  
UNIT "H" SECTION 16  
T26S-R29E EDDY CO. NM

1. Drill 25" hole to 40'. Set 40' of 20" conductor pipe and cement to surface with Redi-Mix.
2. Drill 17½" hole to 550'. Run and set 550' of 13 3/8" 48# H-40 ST&C casing. Cement with 650 Sx. of Class "C" cement + 2% CaCl, + ¼# Flocele/Sx. circulate cement to surface.
3. Drill 11" hole to 2800'. Run and set 2800' of 8 5/8" 24# J-55 ST&C casing. Cement with 900 Sx. of Class "C" cement + additives, circulate cement to surface.
4. Drill 7 7/8" hole to 5500'. Run Gyro, log well, set a cement plug at bottom of hole. KO point 4550'±. Drill curve and lateral 1550' to bottom hole at 2310' FEL & 1980' FNL. Total measured depth of 6370'±. Run 5½" casing as follows: 1870' of 5½" 17# N-80 Buttress Thread, 4500' of 5½" 17# J-55 LT&C. Cement with 800 Sx. of Class "H" cement + additives, estimate top of cement 2000' from surface.

# Dimaggio Horizontal

## PROCEDURE:

STEP      DESCRIPTION

1	MIRU ROTARY TOOLS.
2	SET 13 3/8" SURFACE CASING @ $\pm 575'$ . CEMENT TO SURFACE.
3	SET 9 5/8" INTERMEDIATE CASING @ $\pm 2800'$ . CEMENT TO SURFACE.
4	DRILL 8 3/4" HOLE TO KOP @ $\pm 4650'$ . RUN GYRO. POH & P/U DIRECTIONAL ASSEMBLY.
5	DRILL BUILD 12° PER 100' TO TVD $\pm 5030'$ . POH. P/U 7 7/8" BIT DRILL LATERAL $\pm 2000'$ .
6	POH W/ DIRECTIONAL TOOLS & RUN 5 1/2" PRODUCTION CASING TO END OF LATERAL. USE RIDGID CENTRALIZERS ON CASING.
7	CEMENT CASING AS PER RECOMMENDATION.
8	R/D M/O ROTARY TOOLS. MIRU WELL SERVICE UNIT.
9	RIH W/ 2 3/8" TUBING TO END OF LATERAL. CIRCULATE 2% KCL FW & SPOT ACEDIC ACID.
10	R/U WIRELINE AND WIRELINE TRACTOR. RUN CBL,GR,CCL., RUN GR NEUTRON, RUN PERFORATING GUN AND PERF AS PER NEUTRON LOG.
11	RIH W/ 2 3/8" TUBING TO KOP $\pm 4650'$
12	R/U SWAB. SWAB TEST LATERAL.
13	EVALUATE OF FRAC. FRAC AS PER RECOMMENDATION DOWN CASING. LIMITED ENTRY.
14	COIL TUBING WILL BE NEED TO CLEAN UP FRAC SAND.
15	RIH W/ 2 3/8" TUBING AND SWAB TEST WILLIAMSON SAND.

COPYRIGHT 1990 MITCHELL ENGINEERING, PO BOX 1492. GOLDEN, CO, 80402, USA (303) 273 3744

**LONG's METHOD OF SURVEY COMPUTATION****OBLIQUE CIRCULAR ARC INTERPOLATION**

<b>5800</b>	MD OF INTERPOLATION DEPTH,(feet)
<b>5030.08</b>	TVD COORDINATE OF THE DEPTH (feet)
<b>0.00</b>	N/S COORDINATE OF DEPTH (feet)
<b>-977.37</b>	EW COORDINATE OF DEPTH (feet)

3 D DISTANCE BETWEEN STATION A AND STATION B

**DISTANCE TABLE**

STATION A	STATION B
<b>400.00</b>	<b>600.00</b>
<b>300.00</b>	<b>400.00</b>
<b>100.00</b>	<b>300.00</b>
<b>300.00</b>	ft

Calculator =

**TABLE OF SURVEY STATIONS**

STA #	ΔMD ft	INCL deg	AZIM deg	MD ft	TVD ft	N+/S- ft	E+/W- ft	DLS deg/100FT
1	TIE POINT ⇒	0	0	<b>4550.00</b>	<b>4550.00</b>	<b>0.00</b>	<b>0.00</b>	-
2	<b>100</b>	<b>12</b>	<b>270</b>	<b>4650.00</b>	<b>4649.27</b>	<b>0.00</b>	<b>-10.43</b>	<b>12.00</b>
3	<b>100</b>	<b>24</b>	<b>270</b>	<b>4750.00</b>	<b>4744.20</b>	<b>0.00</b>	<b>-41.28</b>	<b>12.00</b>
4	<b>100</b>	<b>36</b>	<b>270</b>	<b>4850.00</b>	<b>4830.65</b>	<b>0.00</b>	<b>-91.19</b>	<b>12.00</b>
5	<b>100</b>	<b>48</b>	<b>270</b>	<b>4950.00</b>	<b>4904.83</b>	<b>0.00</b>	<b>-157.98</b>	<b>12.00</b>
6	<b>100</b>	<b>60</b>	<b>270</b>	<b>5050.00</b>	<b>4963.50</b>	<b>0.00</b>	<b>-238.73</b>	<b>12.00</b>
7	<b>100</b>	<b>72</b>	<b>270</b>	<b>5150.00</b>	<b>5004.10</b>	<b>0.00</b>	<b>-329.92</b>	<b>12.00</b>
8	<b>100</b>	<b>84</b>	<b>270</b>	<b>5250.00</b>	<b>5024.85</b>	<b>0.00</b>	<b>-427.56</b>	<b>12.00</b>
9	<b>100</b>	<b>90</b>	<b>270</b>	<b>5350.00</b>	<b>5030.08</b>	<b>0.00</b>	<b>-527.37</b>	<b>6.00</b>
10	<b>100</b>	<b>90</b>	<b>270</b>	<b>5450.00</b>	<b>5030.08</b>	<b>0.00</b>	<b>-827.37</b>	<b>0.00</b>
11	<b>100</b>	<b>90</b>	<b>270</b>	<b>5550.00</b>	<b>5030.08</b>	<b>0.00</b>	<b>-727.37</b>	<b>0.00</b>
12	<b>100</b>	<b>90</b>	<b>270</b>	<b>5650.00</b>	<b>5030.08</b>	<b>0.00</b>	<b>-827.37</b>	<b>0.00</b>
13	<b>100</b>	<b>90</b>	<b>270</b>	<b>5750.00</b>	<b>5030.08</b>	<b>0.00</b>	<b>-927.37</b>	<b>0.00</b>
14	<b>100</b>	<b>90</b>	<b>270</b>	<b>5850.00</b>	<b>5030.08</b>	<b>0.00</b>	<b>-1027.37</b>	<b>0.00</b>
15	<b>100</b>	<b>90</b>	<b>270</b>	<b>5950.00</b>	<b>5030.08</b>	<b>0.00</b>	<b>-1127.37</b>	<b>0.00</b>
16	<b>100</b>	<b>90</b>	<b>270</b>	<b>6050.00</b>	<b>5030.08</b>	<b>0.00</b>	<b>-1227.37</b>	<b>0.00</b>
17	<b>100</b>	<b>90</b>	<b>270</b>	<b>6150.00</b>	<b>5030.08</b>	<b>0.00</b>	<b>-1327.37</b>	<b>0.00</b>
18	<b>100</b>	<b>90</b>	<b>270</b>	<b>6250.00</b>	<b>5030.08</b>	<b>0.00</b>	<b>-1427.37</b>	<b>0.00</b>
19	<b>122</b>	<b>90</b>	<b>270</b>	<b>6372.00</b>	<b>5030.08</b>	<b>0.00</b>	<b>-1549.37</b>	<b>0.00</b>
20								
21								
22								
23								
24								
25								
26								
27								
28								
29								
30								
31								
32								
33								
34								
35								
36								
37								
38								
39								
40								
41								
42								
43								
44								
45								

DISTRICT I  
1626 N. French Dr., Hobbs, NM 88240

DISTRICT II  
811 South First, Artesia, NM 88210

DISTRICT III  
1000 Rio Brazos Rd., Aztec, NM 87410

DISTRICT IV  
2040 South Pacheco, Santa Fe, NM 87505

State of New Mexico  
Energy, Minerals and Natural Resources Department

Form C-102  
Revised March 17, 1999

Submit to Appropriate District Office  
State Lease - 4 Copies  
Fee Lease - 3 Copies

OIL CONSERVATION DIVISION

2040 South Pacheco  
Santa Fe, New Mexico 87504-2088

☐ AMENDED REPORT

WELL LOCATION AND ACREAGE DEDICATION PLAT

API Number	Pool Code 11540	Pool Name CEDAR CANYON-DELAWARE
Property Code 9317	Property Name DIMAGGIO	Well Number 11
OGRID No. 17891	Operator Name POGO PRODUCING COMPANY	Elevation 2930'

Surface Location

UL or lot No.	Section	Township	Range	Lot Idn	Feet from the	North/South line	Feet from the	East/West line	County
H	16	26 S	29 E		1980	NORTH	760	EAST	EDDY

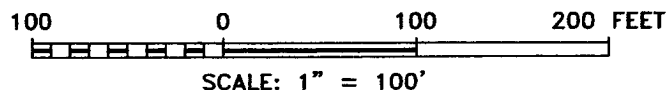
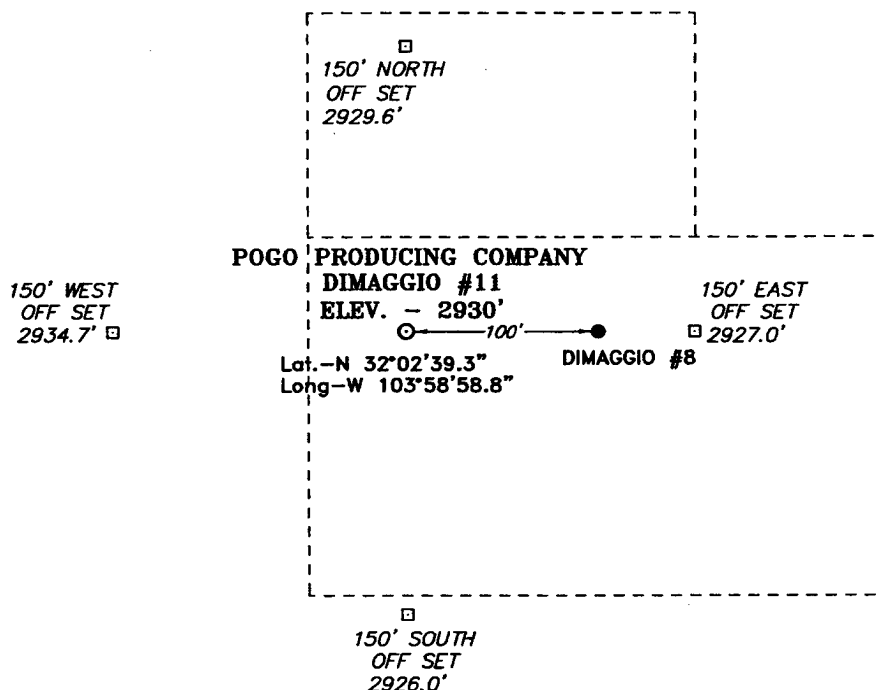
Bottom Hole Location If Different From Surface

UL or lot No.	Section	Township	Range	Lot Idn	Feet from the	North/South line	Feet from the	East/West line	County
G	16	26 S	29 E		1980	NORTH	2310	EAST	EDDY
Dedicated Acres 80	Joint or Infill	Consolidation Code	Order No.						

NO ALLOWABLE WILL BE ASSIGNED TO THIS COMPLETION UNTIL ALL INTERESTS HAVE BEEN CONSOLIDATED  
OR A NON-STANDARD UNIT HAS BEEN APPROVED BY THE DIVISION

	<p><b>OPERATOR CERTIFICATION</b></p> <p>I hereby certify the the information contained herein is true and complete to the best of my knowledge and belief.</p> <p><i>Joe T. Janica</i> Signature Joe T. Janica Printed Name Agent Title 08/10/04 Date</p> <p><b>SURVEYOR CERTIFICATION</b></p> <p>I hereby certify that the well location shown on this plat was plotted from field notes of actual surveys made by me or under my supervision, and that the same is true and correct to the best of my belief.</p> <p>JULY 19, 2004</p> <p>Date Surveyed Signature &amp; Seal of Professional Surveyor W.O. No. 4462 Certificate No. Gary L. Jones 7977</p>
--	--

SECTION 16, TOWNSHIP 26 SOUTH, RANGE 29 EAST, N.M.P.M.,  
EDDY COUNTY, NEW MEXICO.



**POGO PRODUCING CO.**

REF: DIMAGGIO #11 / Well Pad Topo

THE DIMAGGIO No. 11 LOCATED 1980' FROM  
THE NORTH LINE AND 760' FROM THE EAST LINE OF  
SECTION 16, TOWNSHIP 26 SOUTH, RANGE 29 EAST,  
N.M.P.M., EDDY COUNTY, NEW MEXICO.

**BASIN SURVEYS** P.O. BOX 1786-HOBBS, NEW MEXICO

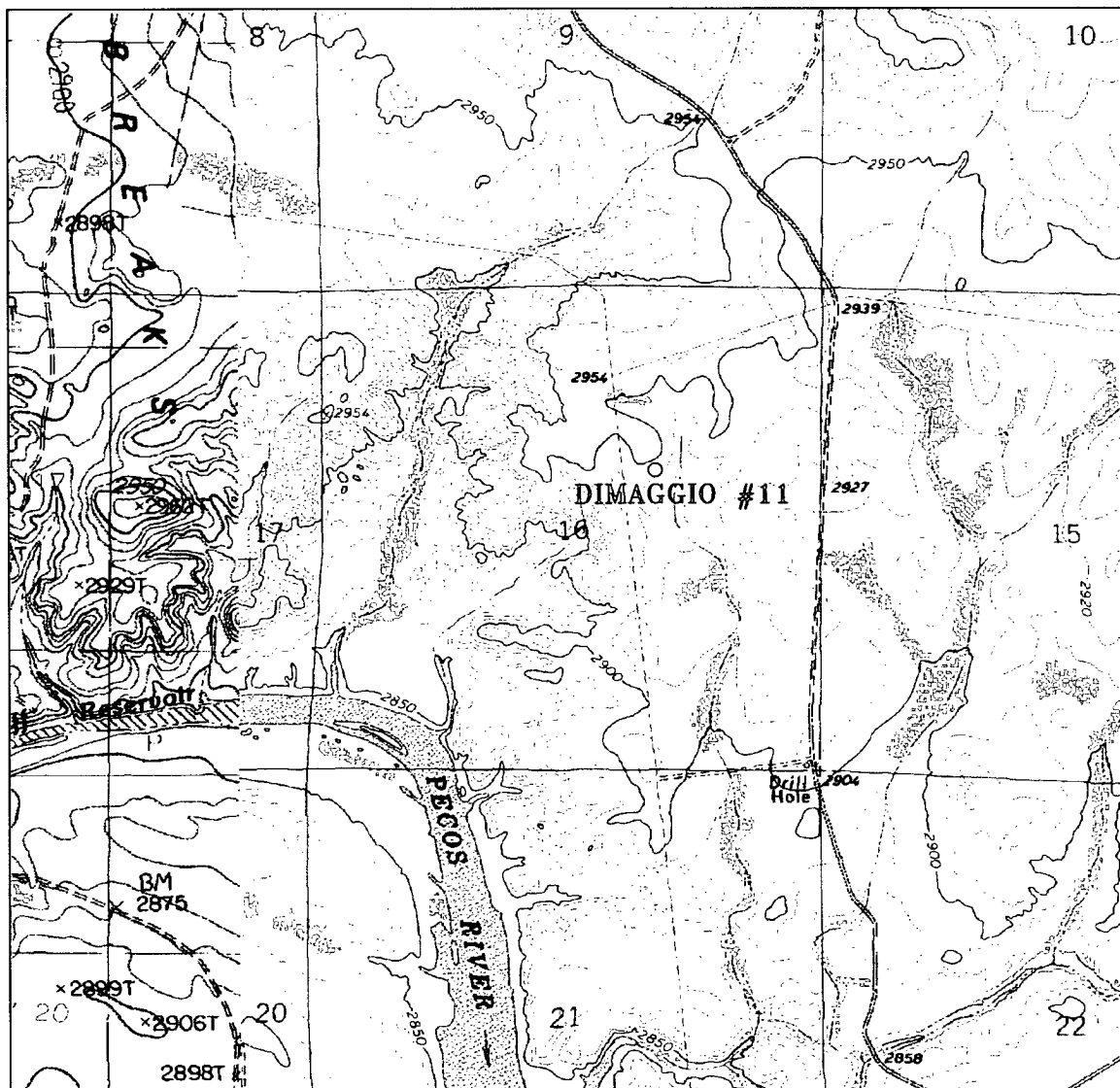
W.D. Number: 4462 Drawn By: K. GOAD

Date: 07-21-2004 Disk: KJG CD#4 - 4462A.DWG

Survey Date: 07-19-2004

Sheet 1 of 1 Sheets





### DIMAGGIO #11

Located at 1980' FNL and 760' FEL  
Section 16, Township 26 South, Range 29 East,  
N.M.P.M., Eddy County, New Mexico.

**basin**  
**surveys**

focused on excellence  
in the oilfield

P.O. Box 1786  
1120 N. West County Rd.  
Hobbs, New Mexico 88241  
(505) 393-7316 - Office  
(505) 392-3074 - Fax  
basinsurveys.com

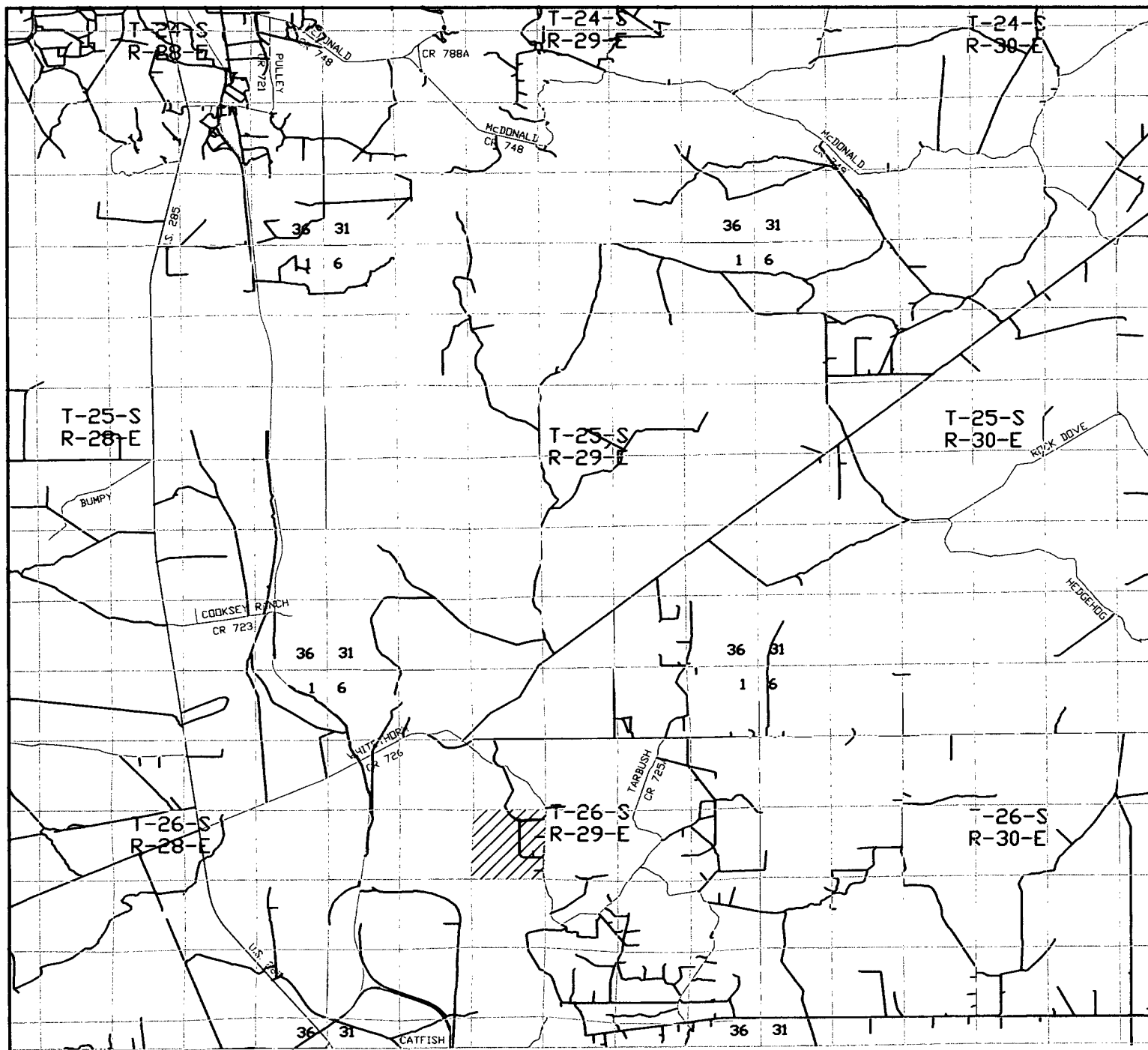
W.O. Number: 4462AA - KJG CD#5

Survey Date: 07-19-2004

Scale: 1" = 2000'

Date: 07-21-2004

**POGO**  
**PRODUCING**  
**COMPANY**



# **DIMAGGIO #11**

Located at 1980' FNL and 760' FEL  
 Section 16, Township 26 South, Range 29 East,  
 N.M.P.M., Eddy County, New Mexico.



P.O. Box 1786  
 1120 N. West County Rd.  
 Hobbs, New Mexico 88241  
 (505) 393-7316 - Office  
 (505) 392-3074 - Fax  
 basinsurveys.com

W.O. Number: 4462AA - KJG CD#5

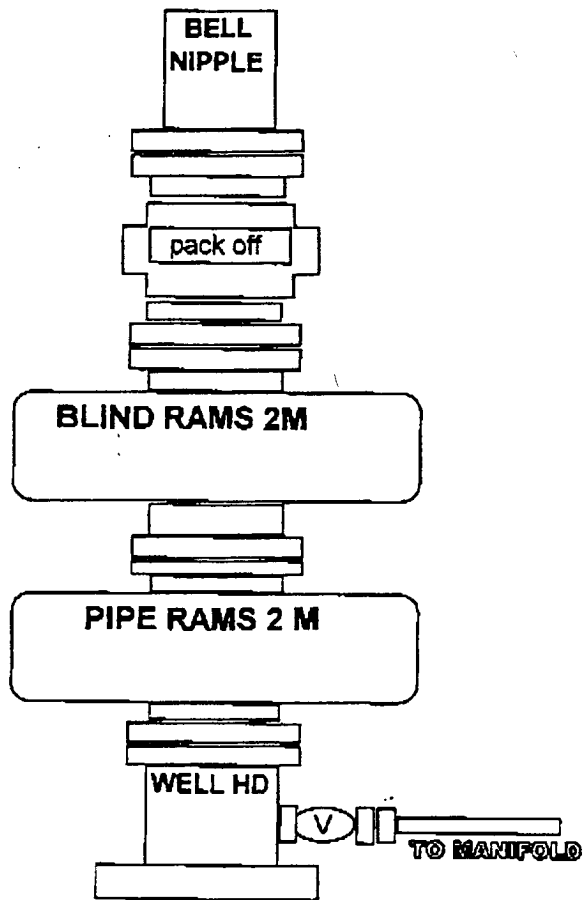
Survey Date: 07-19-2004

Scale: 1" = 2 MILES

Date: 07-21-2004

**POGO  
 PRODUCING  
 COMPANY**

11" 2M



# CHOKE MANIFOLD

3000 PSI WP

