

District I
1625 N. French Dr., Hobbs, NM 88240
District II
1301 W. Grand Avenue, Artesia, NM 88210
District III
1000 Rio Brazos Road, Aztec, NM 87410
District IV
1220 S. St. Francis Dr., Santa Fe, NM 87505

State of New Mexico
Energy Minerals and Natural Resources

Form C-101
March 4, 2004

Oil Conservation Division
1220 South St. Francis Dr.
Santa Fe, NM 87505

RECEIVED
Submit to appropriate District Office
State Lease - 6 Copies
Fee Lease - 5 Copies
AUG 13 2004

POB-ARTESIA

☐ AMENDED REPORT

APPLICATION FOR PERMIT TO DRILL, RE-ENTER, DEEPEN, PLUGBACK, OR ADD A ZONE

¹ Operator Name and Address POGO PRODUCING COMPANY P.O. BOX 10340 MIDLAND, TEXAS 79702-7340		² OGRID Number 17891
³ Property Code		³ API Number 30 - 015-33574
³ Property Name LAKE WOOD "15"	⁶ Well No. 1	

⁷ Surface Location

UL or lot no. I	Section 15	Township 19S	Range 26E	Lot Idn	Feet from the 1750'	North/South line SOUTH	Feet from the 660'	East/West line EAST	County EDDY
--------------------	---------------	-----------------	--------------	---------	------------------------	---------------------------	-----------------------	------------------------	----------------

⁸ Proposed Bottom Hole Location If Different From Surface

UL or lot no.	Section	Township	Range	Lot Idn	Feet from the	North/South line	Feet from the	East/West line	County
---------------	---------	----------	-------	---------	---------------	------------------	---------------	----------------	--------

⁹ Proposed Pool 1

Under Four Mile Draw; Morrow

¹⁰ Proposed Pool 2

Drilling Pit Location and Other Information

UL or lot no. I	Section 15	Township 19S	Range 26E	Lot Idn	Feet from the 1750'	North/South line SOUTH	Feet from the 660'	East/West line EAST	County EDDY
Depth to ground water 75'			Distance from nearest fresh water well 2100'			Distance from nearest surface water LAKE Mc MILLAN 2.5 Miles SE.			
¹¹ Work Type Code N		¹² Well Type Code G		¹³ Cable/Rotary ROTARY		¹⁴ Lease Type Code P		¹⁵ Ground Level Elevation 3313'	
¹⁶ Multiple NO		¹⁷ Proposed Depth 10,000'		¹⁸ Formation MORROW		¹⁹ Contractor UNKNOWN		²⁰ Spud Date WHEN APPROVED	

²¹ Proposed Casing and Cement Program

Hole Size	Casing Size	Casing weight/foot	Setting Depth	Sacks of Cement	Estimated TOC
25"	20"	NA Conductor	40'	Redi-mix	Surface
17½"	13 3/8"	48	500'	550 Sx.	Surface
11"	8 5/8"	32	20' 1050'	600 Sx.	Surface
7 7/8"	5½"	17	10,000'	1000 Sx.	2050' FS
					Tie back

²² Describe the proposed program. If this application is to DEEPEN or PLUG BACK, give the data on the present productive zone and proposed new productive zone. Describe the blowout prevention program, if any. Use additional sheets if necessary.

Only Fresh Water Mud SEE ATTACHED SHEET 1050'

²³ I hereby certify that the information given above is true and complete to the best of my knowledge and belief. I further certify that the drilling pit will be constructed according to NMOC guidelines ☒ a general permit ☐, or an (attached) alternative OCD-approved plan ☐.

Signature: Joe T. Janice

Printed name: Joe T. Janice

Title: Agent

E-mail Address:

Date: 08/11/04

Phone: 505-391-8503

OIL CONSERVATION DIVISION

Approved by:

TIM W. GUM
DISTRICT II SUPERVISOR

Title:

Approval Date: AUG 24 2004

Expiration Date: AUG 24 2005

Conditions of Approval:

Attached ☐

NOTIFY OCD OF SPUD & TIME TO
WITNESS CEMENTING OF
SURFACE & INTERMEDIATE
CASING

POGO PRODUCING COMPANY
LAKE WOOD "15" # 1
UNIT "I" SECTION 15
T19S-R26E EDDY CO. NM

1. Drill 25" hole to 40'. Set 40' of 20" conductor pipe and cement to surface with Redi-mix.
2. Drill 17½" hole to 500'. Run and set 500' of 13 3/8" 48# H-40 ST&C casing. Cement with 550 Sx. of Class "C" cement + 2% CaCl, + ¼# Flocele/Sx., circulate cement to surface.
3. Drill 11" hole to 2300'. Run and set 2300' of 8 5/8" 32# J-55 ST&C casing. Cement with 400 Sx. of Class "C" Light Weight cement + additives, tail in with 200 Sx. of Class "C" cement + 2% CaCl, + ¼# Flocele/Sx., circulate cement to surface.
4. Drill 7 7/8" hole to 10,000'. Run and set 10,000' of 5½" 17# L-80 LT&C casing. Cement in two stages with DV Tool at 4500'±. Cement 1st stage with 950 Sx. of Class "H" cement + additives, cement 2nd stage with 500 Sx. of Class "C" cement + additives estimate top of cement 2000' from surface.

DISTRICT I
1625 N. FRENCH DR., HOBBS, NM 88240

DISTRICT II
1301 W. GRAND AVENUE, ARTESIA, NM 88210

DISTRICT III
1000 Rio Brazos Rd., Aztec, NM 87410

DISTRICT IV
1220 S. ST. FRANCIS DR., SANTA FE, NM 87505

State of New Mexico
Energy, Minerals and Natural Resources Department

OIL CONSERVATION DIVISION
1220 SOUTH ST. FRANCIS DR.
Santa Fe, New Mexico 87505

Form C-102
Revised JUNE 10, 2003
Submit to Appropriate District Office
State Lease - 4 Copies
Fee Lease - 3 Copies

WELL LOCATION AND ACREAGE DEDICATION PLAT

☐ AMENDED REPORT

API Number	Pool Code	Pool Name
		WILDCAT - MORROW
Property Code	Property Name	Well Number
	LAKEWOOD 15	1
OGRID No. 17891	Operator Name	Elevation
	POGO PRODUCING COMPANY	3313'

Surface Location

UL or lot No.	Section	Township	Range	Lot Idn	Feet from the	North/South line	Feet from the	East/West line	County
1	15	19-S	26-E		1750	SOUTH	660	EAST	EDDY

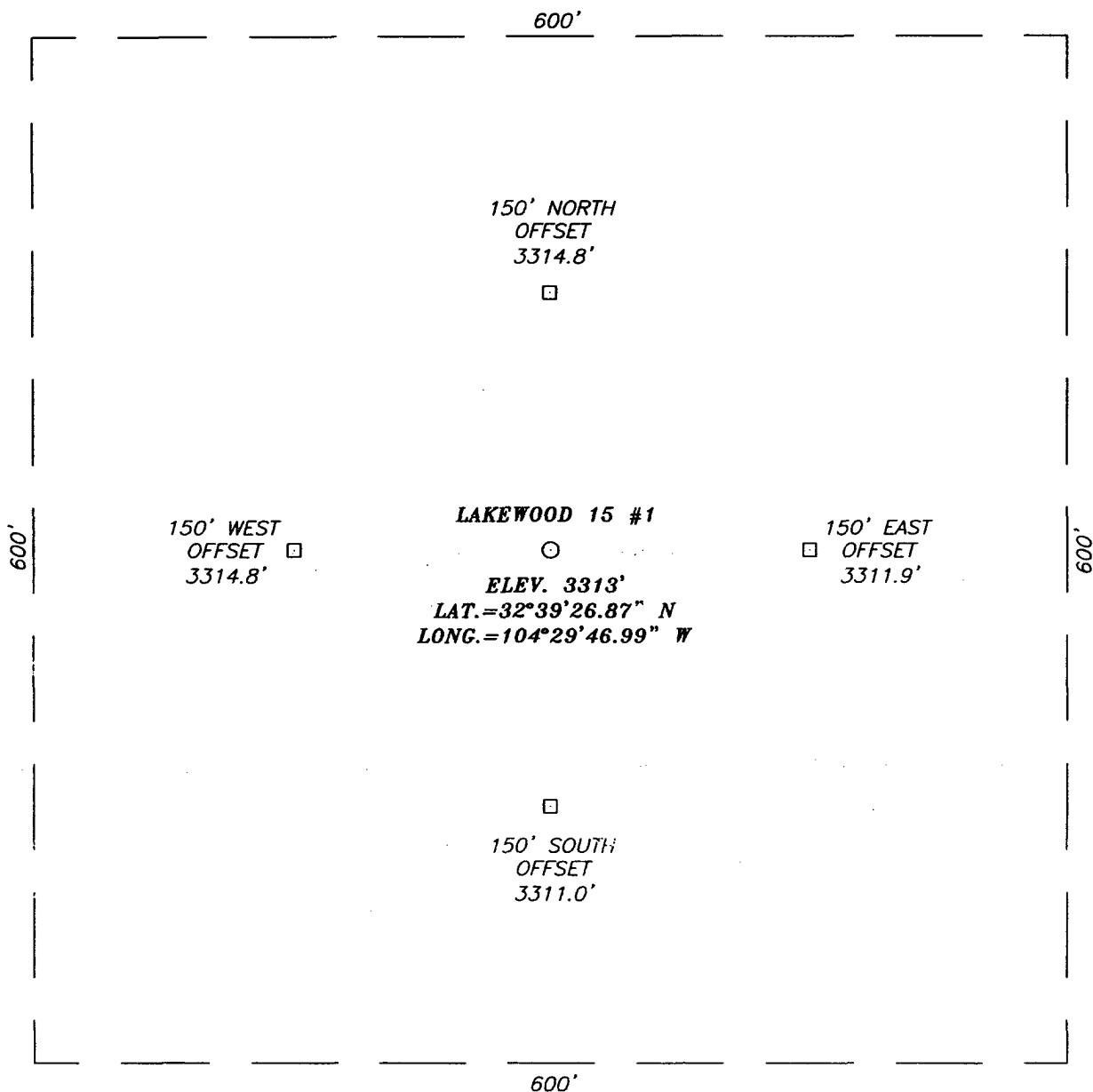
Bottom Hole Location If Different From Surface

UL or lot No.	Section	Township	Range	Lot Idn	Feet from the	North/South line	Feet from the	East/West line	County
Dedicated Acres 320	Joint or Infill	Consolidation Code	Order No.						

NO ALLOWABLE WILL BE ASSIGNED TO THIS COMPLETION UNTIL ALL INTERESTS HAVE BEEN CONSOLIDATED
OR A NON-STANDARD UNIT HAS BEEN APPROVED BY THE DIVISION

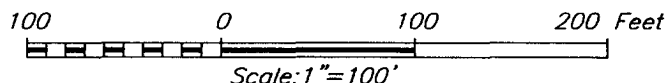
	OPERATOR CERTIFICATION I hereby certify the the information contained herein is true and complete to the best of my knowledge and belief. Signature Joe T. Janica Printed Name Agent Title 08/11/04 Date	
	SURVEYOR CERTIFICATION I hereby certify that the well location shown on this plat was plotted from field notes of actual surveys made by me or under my supervision, and that the same is true and correct to the best of my belief. JULY 30, 2004 Date Surveyed LA Signature & Seal of Professional Surveyor Certificate No. GARY EDMON 12641	


SECTION 15, TOWNSHIP 19 SOUTH, RANGE 26 EAST, N.M.P.M.,
EDDY COUNTY, NEW MEXICO



DIRECTIONS TO LOCATION

FROM THE INTERSECTION OF U.S. HWY #285 AND
 EDDY CO. RD. #35 (CRANE RD.) GO EAST ON
 EDDY CO. RD. #35 (CRANE RD) APPROX. 1.5
 MILES AND TURN RIGHT ON EDDY CO. RD. #34.
 GO SOUTH 0.2 MILES. TURN LEFT ON CO. RD.
 #36 (SUNRAY RD) AND GO APPROX. 2000'. THIS
 LOCATION IS 400' NORTH.





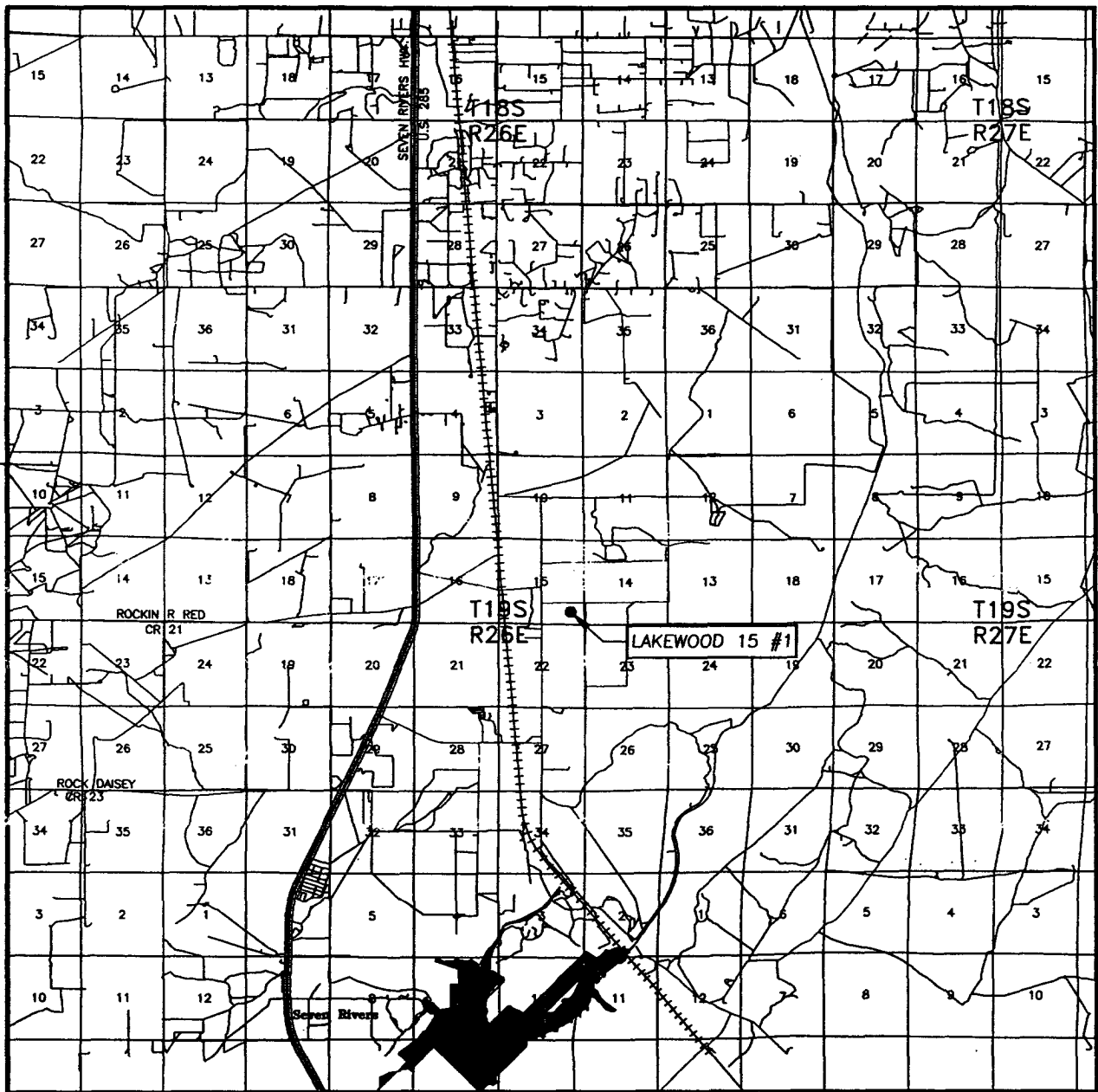
PROVIDING SURVEYING SERVICES
SINCE 1946
JOHN WEST SURVEYING COMPANY
 412 N. DAL PASO
 HOBBS, N.M. 88240
 (505) 393-3117

POGO PRODUCING COMPANY

LAKEWOOD 15 #1 WELL
 LOCATED 1750 FEET FROM THE SOUTH LINE
 AND 660 FEET FROM THE EAST LINE OF SECTION 15,
 TOWNSHIP 19 SOUTH, RANGE 26 EAST, N.M.P.M.,
 EDDY COUNTY, NEW MEXICO.

Survey Date: 7/30/04	Sheet 1 of 1 Sheets
W.O. Number: 04.11.0970	Dr By: LA
Date: 8/02/04	Rev 1: N/A
Disk: CD#3	04110970
	Scale: 1"=100'

VICINITY MAP



SCALE: 1" = 2 MILES

SEC. 15 TWP. 19-S RGE. 26-E

SURVEY N.M.P.M.


COUNTY EDDY

DESCRIPTION 1750' FSL & 660' FEL

ELEVATION 3313'

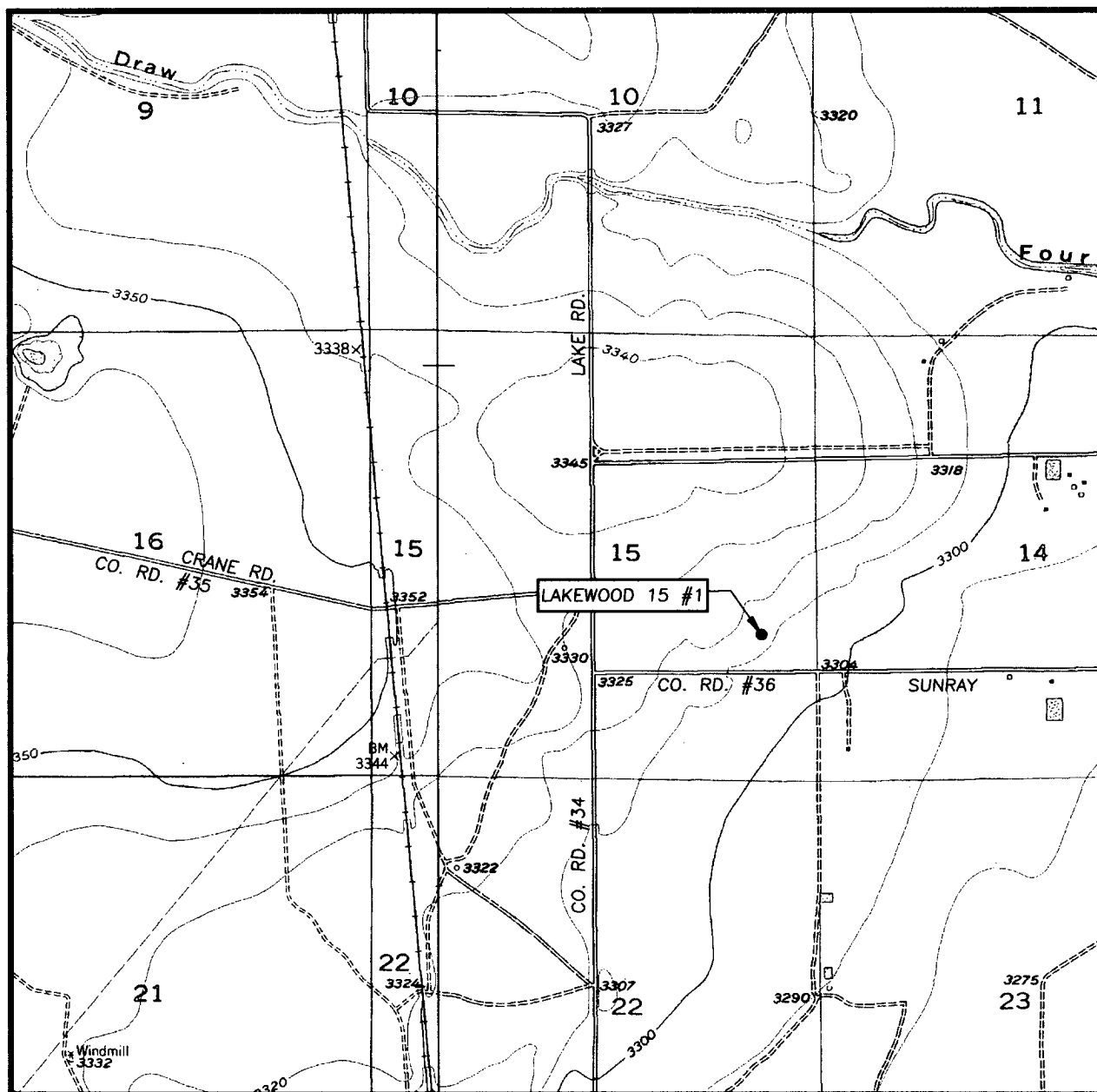
OPERATOR POGO PRODUCING COMPANY

LEASE LAKEWOOD 15



PROVIDING SURVEYING SERVICES
SINCE 1946
JOHN WEST SURVEYING COMPANY
412 N. DAL PASO
HOBBBS, N.M. 88240
(505) 393-3117

LOCATION VERIFICATION MAP



SCALE: 1" = 2000'

CONTOUR INTERVAL: 10'
LAKE MCMILLAN NORTH, N.M.

SEC. 15 TWP. 19-S RGE. 26-E

SURVEY N.M.P.M.

COUNTY EDDY

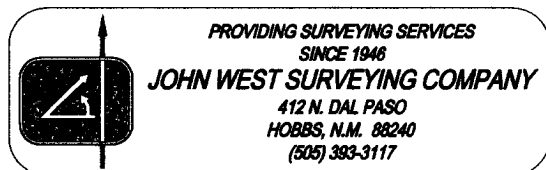
DESCRIPTION 1750' FSL & 660' FEL

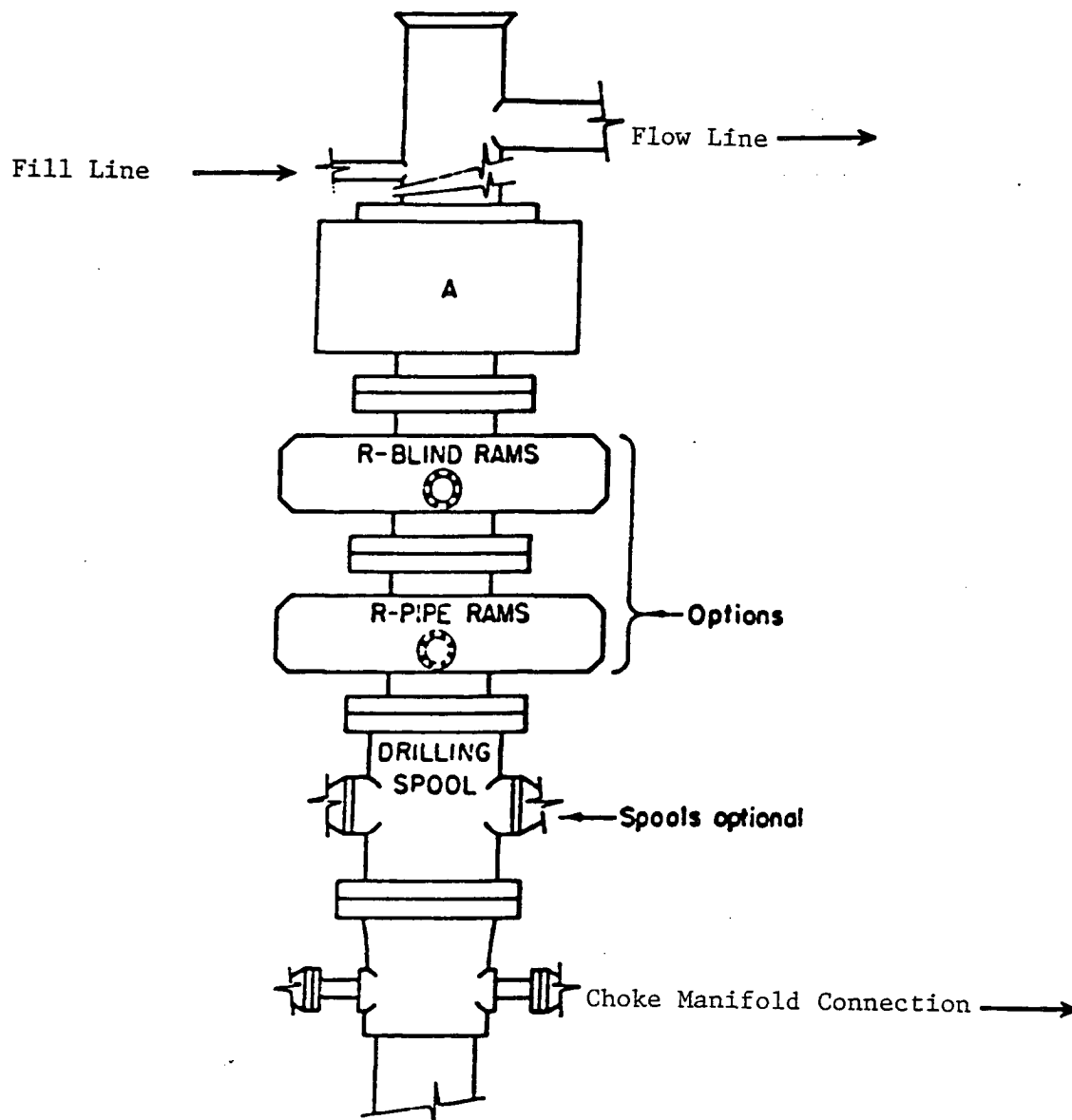
ELEVATION 3313'

OPERATOR POGO PRODUCING COMPANY

LEASE LAKEWOOD 15

U.S.G.S. TOPOGRAPHIC MAP
LAKE MCMILLAN NORTH, N.M.





ARRANGEMENT SRRA

1500 Series
5000 PSI WP

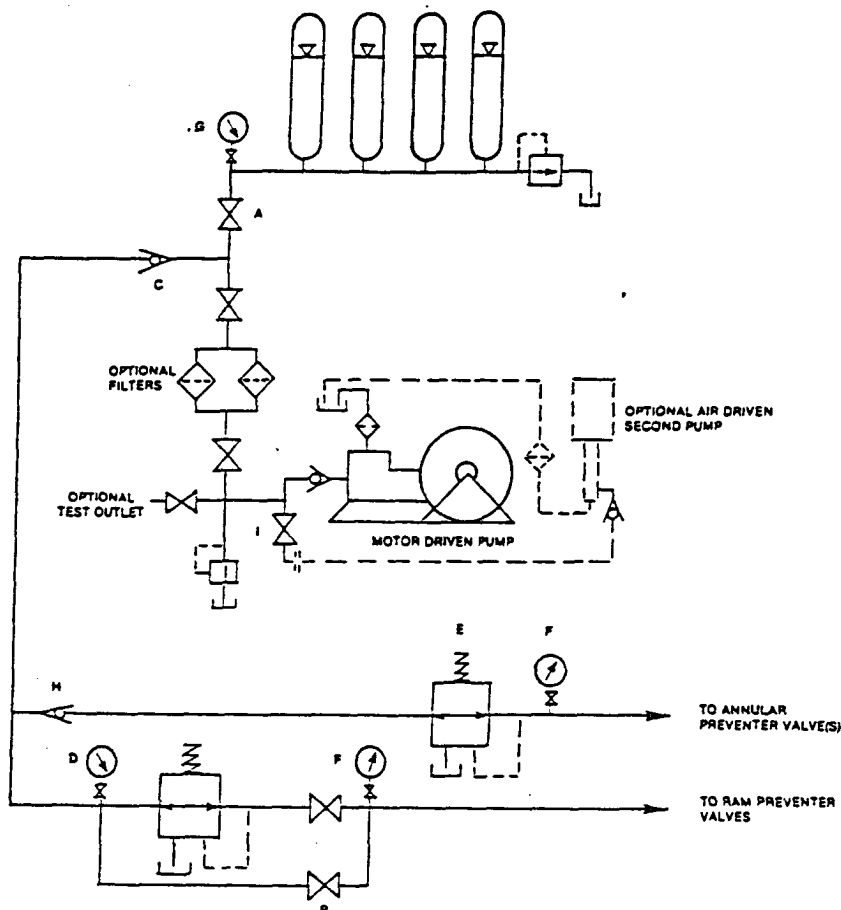


FIGURE K6-1. The schematic sketch of an accumulator system shows required and optional components.

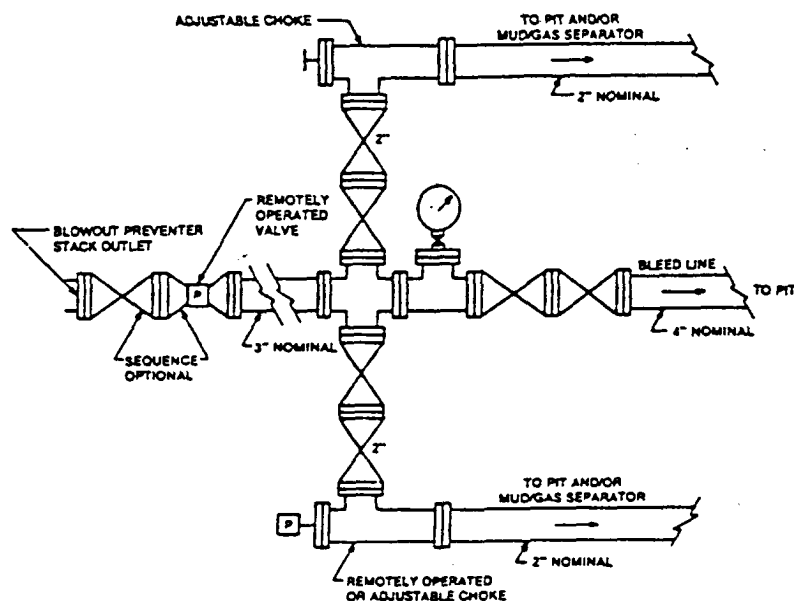


FIGURE K4-2. Typical choke manifold assembly for 5M rated working pressure service — surface installation.

HYDROGEN SULFIDE DRILLING OPERATIONS PLAN

APPLICABILITY:

The provisions of this plan are effective when drilling operations are conducted in areas where zones may be penetrated that are known to contain, or may be reasonably expected to contain, hydrogen sulfide gas in concentrations of 100 parts per million or more.

TRAINING REQUIREMENTS:

A. When conducting drilling operations in an area where hydrogen sulfide gas might be encountered, all personnel at the well site will have had proper training in the following areas:

1. The hazards and characteristics of hydrogen sulfide gas (H₂S).
2. Toxicity of hydrogen sulfide and sulfur dioxide.
3. Hydrogen sulfide gas detectors, warning systems, evacuation procedures, and proper use and maintenance of personal protective equipment.
4. Proper rescue procedures, first aid, and artificial respiration.

B. In addition, supervisory personnel will be trained in the following areas:

1. The effects of hydrogen sulfide on metal components. If high tensile tubulars are to be used, personnel will be trained in their special maintenance requirements.
2. Corrective action and shut-in procedures when drilling or reworking a well, and blowout prevention and well control procedures.
3. The contents and requirements of the Hydrogen Sulfide Drilling Operations Plan and the Public Protection Plan.

There will be an initial training session just prior to encountering a known or probable hydrogen sulfide zone (within 3 days or 500 feet) and weekly hydrogen sulfide and well control drills for all personnel in each crew. The initial training session will include a review of the site specific Hydrogen Sulfide Drilling Operations Plan and the Public Protection Plan. This plan will be available at the well site. All personnel will be required to carry documentation that they have received the proper training.

A. Attached is a detailed well site diagram showing:

- Drilling rig orientation
- Prevailing wind direction (Southwest)
- Location of briefing areas
- Location of Caution/Danger Signs
- Location of hydrogen sulfide monitors
- Location of wind direction Indicators

HYDROGEN SULFIDE SAFETY EQUIPMENT:

- A. All safety equipment and systems will be installed, tested and deemed operational when drilling reaches a depth of 500 feet above, or three days prior to penetrating the first zone reasonably expected to contain hydrogen sulfide.
- B. During drilling operations, a flare line will be routed from the BOP manifold to the reserve pit. Should suspected sour gas be vented through the flare line, a flare pistol will be used to ignite the flare.
- C. Protective equipment for essential personnel will be installed and maintained as follows:
1. 30-minute air packs will be maintained on the rig floor and near the briefing area.
 2. 30-minute work units will be maintained at the H2S trailer and/or on the rig floor.
 3. 30-minute escape units will be maintained on the rig floor.
 4. 300 cu. ft. air cylinders will be maintained in the H2S trailer.
 5. Associated breathing air equipment will also be installed and maintained.
 6. Hydrogen sulfide monitor will be located in the doghouse on the rig floor with sensors placed on the rig floor, at the bell nipple, the shale shaker, and in the pit area.
 7. An audible/visual alarm will be located near the doghouse on the rig floor.

VISUAL WARNING SYSTEMS:

- A. High visibility Caution/Danger signs will be posted on roads providing direct access to the well location.
- B. Green, yellow, and red condition flags to be displayed to denote Normal Conditions, Potential Danger, and Danger, H₂S Present.
- C. Wind socks to be located at the protection center and in the pit area to continuously indicate wind direction.

CIRCULATING MEDIUM:

- A. Drilling fluid to be conditioned to minimize the volume of H₂S circulated to the surface.

SPECIAL WELL CONTROL EQUIPMENT:

- A. In addition to the normal BOP stack and choke manifold, a drilling head will be used to help control and H₂S contaminated drilling.

WELL TESTING:

- A. Drill stem testing of zones known, or reasonably expected, to contain hydrogen sulfide in concentrations of 100 pps or more will use the closed chamber method of testing.

COMMUNICATION:

- A. Radio communication will be available at the drilling rig and also in company vehicles.

ADDITIONAL INFORMATION:

- A. Additional information concerning Emergency Reaction Steps, Ignition Procedures, Training Requirements, and Emergency Equipment Requirements will be available on location at the well site.

POGO PRODUCING COMPANY
LAKE WOOD "15" # 1
UNIT "I" SECTION 15
T19S-R26E EDDY CO. NM

RECEIVED
AUG 19 2004
OCD-ARTESIA

PROPOSED MUD CIRCULATING SYSTEM:

DEPTH	MUD WT.	VISC.	FLUID LOSS	TYPE MUD SYSTEM
40-500'	8.4-8.7	29-34	NC	Fresh water Spud Mud add paper to control seepage.
500-2300'	10.0-10.2 Fresh Water Mud	29-38	NC Fresh Water	Brine water, add paper to control seepage and use high viscosity sweeps to clean hole.
2300-10,000'	8.4-8.7	29-40	NC*	Fresh water mud system use high viscosity sweeps to clean hole.

* Water loss may have to be lowered in order to protect the pay formation, run logs, DST's, cur cores, and run casing. If this is required a Dris-Pac system will be used.

Sufficient mud materials will be kept on location at all times in order to combat lost circulation, or unexpected kicks. In order to run DST's, open hole logs, and casing, viscosity, and water loss may have to be adjusted to meet these needs.

POGO PRODUCING COMPANY
LAKE WOOD "15" # 1
UNIT "I" SECTION 15
T19S-R26E EDDY CO. NM

According to information received from The Bureau of Land Management Roswell Field Office there is no indication of any H²S in the vicinity of the above well location

Est. James