

District I
1625 N. French Dr., Hobbs, NM 88240

District II
1301 W. Grand Avenue, Artesia, NM 88210

District III
1000 Rio Brazos Road, Aztec, NM 87410

District IV
1220 S. St. Francis Dr., Santa Fe, NM 87505

State of New Mexico
Energy Minerals and Natural Resources

Oil Conservation Division
1220 South St. Francis Dr.
Santa Fe, NM 87505

Form C-101
Revised March 17, 1999

Submit to appropriate District Office
State Lease - 6 Copies
Fee Lease - 5 Copies

☐ AMENDED REPORT

APPLICATION FOR PERMIT TO DRILL, RE-ENTER, DEEPEN, PLUGBACK, OR ADD A ZONE

¹ Operator Name and Address Mewbourne Oil Company PO Box 5270 Hobbs, NM 88240		² OGRID 14744
³ Property Code 33266		³ API Number 30 015-33424
⁵ Property Name Tombstone 5 Fee Com		⁶ Well No. #2

RECEIVED

OCT - 4 2004

~~OPERATOR'S~~

⁷ Surface Location									
UL or lot no.	Section	Township	Range	Lot Idn	Feet from the	North/South line	Feet from the	East/West line	County
F	5	20S	25E		1650	N	1450	W	Eddy

⁸ Proposed Bottom Hole Location If Different From Surface									
UL or lot no.	Section	Township	Range	Lot Idn	Feet from the	North/South line	Feet from the	East/West line	County
⁹ Proposed Pool 1 Wildcat Atoka					¹⁰ Proposed Pool 2				

¹¹ Work Type Code Plug back	¹² Well Type Code G	¹³ Cable/Rotary R	¹⁴ Lease Type Code P	¹⁵ Ground Level Elevation 3520
¹⁶ Multiple No	¹⁷ Proposed Depth	¹⁸ Formation Atoka	¹⁹ Contractor	²⁰ Spud Date 06/09/04

²¹ Proposed Casing and Cement Program					
Hole Size	Casing Size	Casing weight/foot	Setting Depth	Sacks of Cement	Estimated TOC

Describe the proposed program. If this application is to DEEPEN or PLUG BACK, give the data on the present productive zone and proposed new productive zone. Describe the blowout prevention program, if any. Use additional sheets if necessary

Set CIBP over Morrow perforations. Perforate Atoka at 8610'-8700'.

Will use 7 1/16" x 5000# BOP equipment. MOC has researched the area for possible H2S problems. At this depth, none anticipated.

²³ I hereby certify that the information given above is true and complete to the best of my knowledge and belief.		OIL CONSERVATION DIVISION	
Signature: <i>Kristi Green</i>		Approved by: <i>[Signature]</i>	
Printed name: Kristi Green		Title: <i>FOR RECORDS ONLY</i>	
Title: Hobbs Regulatory		Approval Date: <i>OCT 04 2004</i>	
Date: 09/30/04	Phone: 505-393-5905	Expiration Date:	
Conditions of Approval:		Dylan G. Arant	
Attached <input type="checkbox"/> Not Authorized			

DISTRICT II
811 South First, Artesia, NM 88210Instruction on back
Submit to Appropriate District OfficeDISTRICT III
1000 Rio Brazos Rd., Aztec, NM 87410State Lease - 4 Copies
Fee Lease - 3 CopiesDISTRICT IV
2040 South Pacheco, Santa Fe, NM 87505OIL CONSERVATION DIVISION
P.O. Box 2088
Santa Fe, New Mexico 87504-2088☐ AMENDED REPORT

WELL LOCATION AND ACREAGE DEDICATION PLAT

API Number 30-015-33424	Pool Code	Well Name Dagger Draw; Stream
Property Code 33266	Property Name TOMBSTONE "5" Fee Com	Well Number 2
OCRD No. 14744	Operator Name MEWBOURNE OIL COMPANY	Elevation 3520

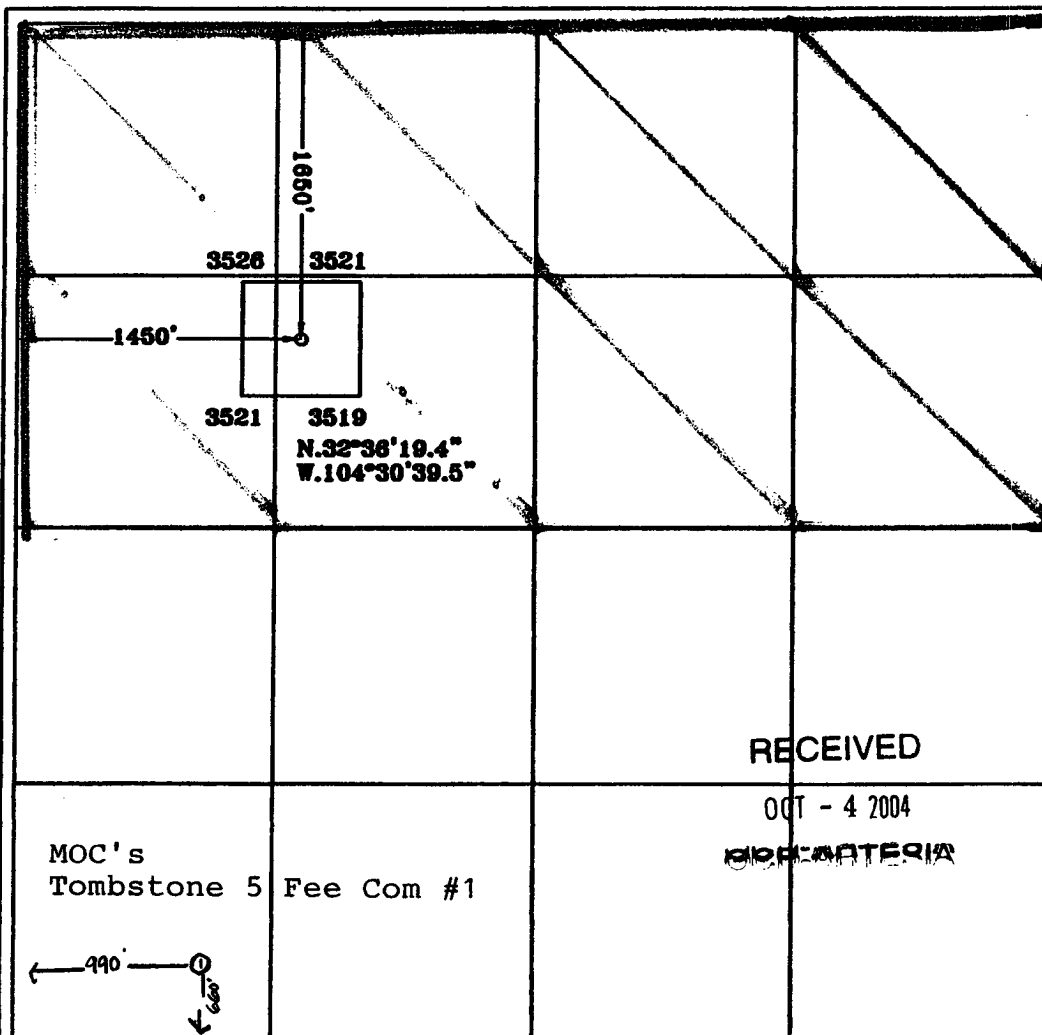
Surface Location

UL or lot No.	Section	Township	Range	Lot Idn	Feet from the	North/South line	Feet from the	East/West line	County
F	5	20S	25E		1650	NORTH	1450	WEST	EDDY

Bottom Hole Location If Different From Surface

UL or lot No.	Section	Township	Range	Lot Idn	Feet from the	North/South line	Feet from the	East/West line	County

Dedicated Acres	Joint or Infill	Consolidation Code	Order No.
320			

NO ALLOWABLE WILL BE ASSIGNED TO THIS COMPLETION UNTIL ALL INTERESTS HAVE BEEN CONSOLIDATED
OR A NON-STANDARD UNIT HAS BEEN APPROVED BY THE DIVISION

OPERATOR CERTIFICATION

I hereby certify the the information
contained herein is true and complete to the
best of my knowledge and belief.*Kristi Green*

Signature

Kristi Green

Printed Name

Hobbs Regulatory

Title

09/30/04

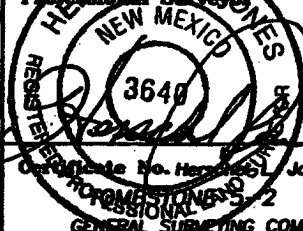
Date

SURVEYOR CERTIFICATION

I hereby certify that the well location shown
on this plat was plotted from field notes of
actual surveys made by me or under my
supervision, and that the same is true and
correct to the best of my belief.

3/29/2004

Date Surveyed

Signature of
Professional Surveyor

Certificate No. Hobbs 2 Jones RLS 3640

TOMBSTONE 5-2
GENERAL SURVEYING COMPANY

0 330' 660' 990' 1650' 1980' 2310' 2310' 1980' 1650' 990' 660' 330' 0'