

S

District I  
1625 N. French Dr., Hobbs, NM 88240  
District II  
811 South First, Artesia, NM 88210  
District III  
1000 Rio Brazos Road, Aztec, NM 87410  
District IV  
2040 South Pacheco, Santa Fe, NM 87505

State of New Mexico  
Energy Minerals and Natural Resources

Oil Conservation Division  
2040 South Pacheco  
Santa Fe, NM 87505

Form C-101  
Revised March 17, 1999

Submit to appropriate District Office  
State Lease - 6 Copies  
Fee Lease - 5 Copies

DHC-3111

☐ AMENDED REPORT

APPLICATION FOR PERMIT TO DRILL, RE-ENTER, DEEPEN, PLUGBACK, OR ADD A ZONE

<sup>1</sup> Operator Name and Address MARBOB ENERGY CORPORATION PO BOX 227 ARTESIA, NM 88211-0227		<sup>2</sup> OGRID Number 14049
<sup>3</sup> Property Code 24888		<sup>4</sup> API Number 30-015-30762
<sup>5</sup> Property Name TH STATE		<sup>6</sup> Well No. 1

<sup>7</sup> Surface Location									
UL or lot no.	Section	Township	Range	Lot Idn	Feet from the	North/South line	Feet from the	East/West line	County
F	34	17S	28E		1650	NORTH	2310	WEST	EDDY

<sup>8</sup> Proposed Bottom Hole Location If Different From Surface									
UL or lot no.	Section	Township	Range	Lot Idn	Feet from the	North/South line	Feet from the	East/West line	County
<sup>9</sup> Proposed Pool 1 ARTESIA QUEEN GRAYBURG SAN ANDRES					<sup>10</sup> Proposed Pool 2				

<sup>11</sup> Work Type Code A	<sup>12</sup> Well Type Code M	<sup>13</sup> Cable/Rotary R	<sup>14</sup> Lease Type Code S	<sup>15</sup> Ground Level Elevation 3669' GL
<sup>16</sup> Multiple Y	<sup>17</sup> Proposed Depth 4223'	<sup>18</sup> Formation SAN ANDRES	<sup>19</sup> Contractor	<sup>20</sup> Spud Date

<sup>21</sup> Proposed Casing and Cement Program					
Hole Size	Casing Size	Casing weight/foot	Setting Depth	Sacks of Cement	Estimated TOC
12 1/4"	8 5/8"	24#	500'	350 SX, CIRC	
7 7/8"	5 1/2"	17#	4219'	875 SX, CIRC	

<sup>22</sup> Describe the proposed program. If this application is to DEEPEN or PLUG BACK, give the data on the present productive zone and proposed new productive zone.  
Describe the blowout prevention program, if any. Use additional sheets if necessary.

ADD PAY IN SAN ANDRES AS FOLLOWS:

1. SET CIBP @ 3700'
2. PERF LOWER & UPPER SAN ANDRES - LOWER: 3128-3474' (12) UPPER: 2317'-2988' (23)
3. ACIDIZE LOWER SAN ANDRES 3128'-3474' W/ 1500 GAL NEFE 15% HCL
4. ACIDIZE UPPER SAN ANDRES 2317'-2988' W/ 4000 GAL NEFE 15% HCL
5. ERAC SAN ANDRES DOWN CASING

<sup>23</sup> I hereby certify that the information given above is true and complete to the best of my knowledge and belief.		OIL CONSERVATION DIVISION	
Signature: <i>Diana J. Cannon</i>		Approved by: <i>Jim W. Brown</i>	
Printed name: DIANA J. CANNON		Title: District Supervisor	
Title: PRODUCTION ANALYST		Approval Date: MAR 11 2003 Expiration Date: MAR 11 2004	
Date: 3/3/03	Phone: (505) 748-3303	Conditions of Approval: Attached <input type="checkbox"/> DHC-3111	

DISTRICT I  
P.O. Box 1980, Hobbs, NM 88241-1980

DISTRICT II  
P.O. Drawer DD, Artesia, NM 88211-0719

DISTRICT III  
1000 Rio Brazos Rd., Artec, NM 87410

DISTRICT IV  
P.O. Box 2088, Santa Fe, NM 87504-2088

State of New Mexico

Energy, Minerals and Natural Resources Department

SEP 13 1999

Form C-102  
Revised February 10, 1994  
Submit to Appropriate District Office  
State Lease - 4 Copies  
Fee Lease - 3 Copies

OIL CONSERVATION DIVISION

P.O. Box 2088  
Santa Fe, New Mexico 87504-2088

☐ AMENDED REPORT

WELL LOCATION AND ACREAGE DEDICATION PLAT

API Number 30-015-30762	Pool Code 3230	Pool Name ARTESIA QUEEN GRBG SA
Property Code 24888	Property Name T H STATE	Well Number 1
OGRID No. 14049	Operator Name MARBOB ENERGY CORPORATION	Elevation 3669

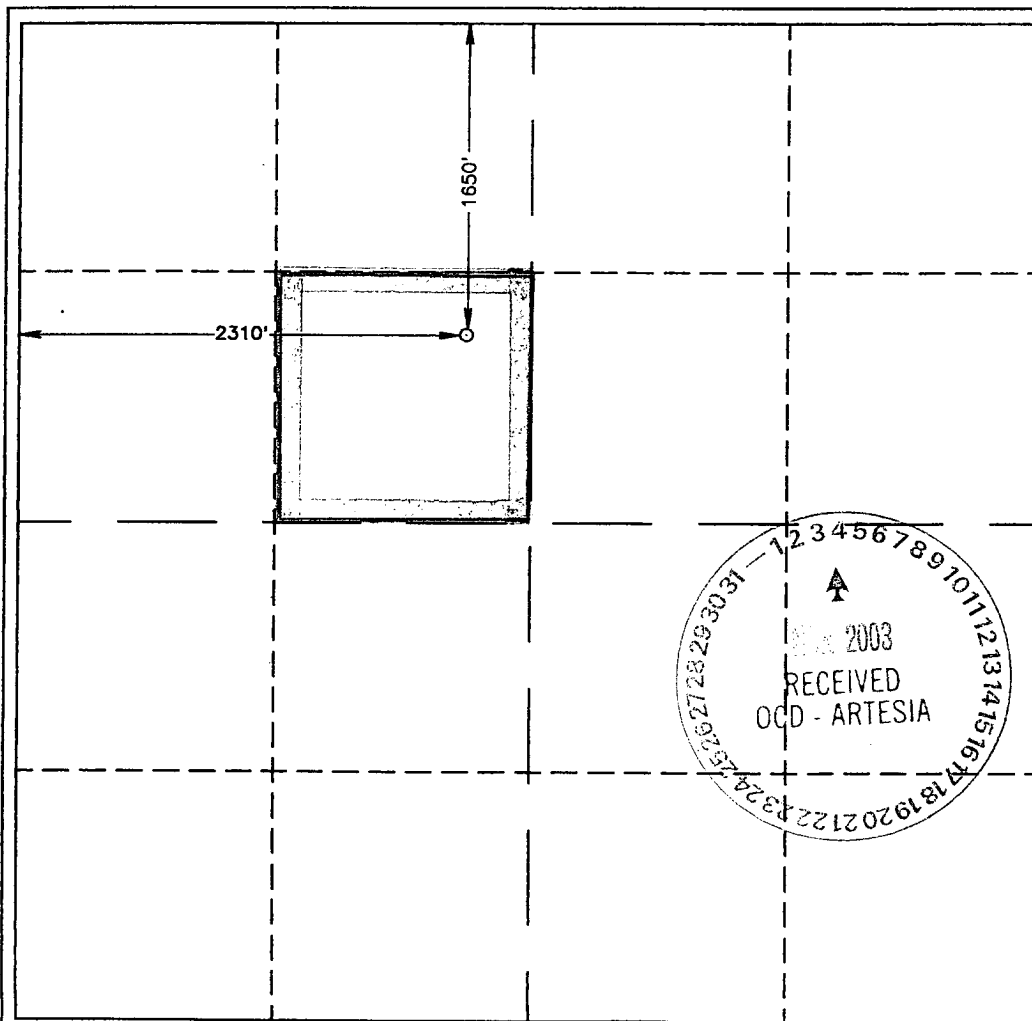
Surface Location

UL or lot No. F	Section 34	Township 17 S	Range 28 E	Lot Idn	Feet from the 1650	North/South line NORTH	Feet from the 2310	East/West line WEST	County EDDY
--------------------	---------------	------------------	---------------	---------	-----------------------	---------------------------	-----------------------	------------------------	----------------

Bottom Hole Location If Different From Surface

UL or lot No.	Section	Township	Range	Lot Idn	Feet from the	North/South line	Feet from the	East/West line	County
Dedicated Acres 40	Joint or Infill	Consolidation Code	Order No.						

NO ALLOWABLE WILL BE ASSIGNED TO THIS COMPLETION UNTIL ALL INTERESTS HAVE BEEN CONSOLIDATED  
OR A NON-STANDARD UNIT HAS BEEN APPROVED BY THE DIVISION



OPERATOR CERTIFICATION

I hereby certify the the information  
contained herein is true and complete to the  
best of my knowledge and belief.

*Diana J. Cannon*  
Signature

DIANA J. CANNON

Printed Name

PRODUCTION ANALYST

Title

MARCH 3, 2003

Date

SURVEYOR CERTIFICATION

I hereby certify that the well location shown  
on this plat was plotted from field notes of  
actual surveys made by me or under my  
supervision, and that the same is true and  
correct to the best of my belief.

SEPTEMBER 8, 1999

Date Surveyed J. EIDSON JLP

Signature & Seal of  
Professional Surveyor

*Ronald J. Eidson*  
3239  
P.O. Num. 99-150717

Certificate No. RONALD J. EIDSON, 3239  
RONALD J. EIDSON, 12641  
RONALD J. EIDSON, 12185

**TH State 1**  
**1650' fnl, 2310' fwl**  
**F-34-17s-28e**  
**Eddy Co., NM**

**13 Feb 03**

**Workover Procedure—Add Pay**

Objective: Add pay in San Andres. The Lower San Andres will be acidized and swab tested by itself. If it yields a good oil show, it is likely that the Lower and Upper San Andres will be fraced together assuming the Upper San Andres yields a good oil show. If the Lower San Andres is not included in the frac, a decision may be made to decrease the size of the attached frac job. The San Andres will be pump tested by itself initially then commingled with the Yeso later.

Well Data: See wellbore sketch.

Procedure:

1. Set CIBP or 5K composite BP at approx. 3700' to cover the Yeso. Test plug to 2000 psi.
2. Perf Lower and Upper San Andres with one shot at the depths shown below using 4" casing gun with Millenium charges.

Lower San Andres: 3128', 3147', 3161', 3182', 3263', 3298', 3360', 3364', 3382', 3390',  
3433', 3474' (12)

Upper San Andres: 2317', 2329', 2504', 2543', 2550', 2561', 2584', 2589', 2618', 2622',  
2671', 2673', 2716', 2770', 2790', 2801', 2812', 2825', 2880', 2901',  
2913', 2919', 2988' (23)

Perfs above picked on Density-Neutron log dated 9-29-99. The Depth Control Log generally appears to be on depth – no correction needed.

2. Acidize the Lower San Andres 3128-3474' with 1500 gal NE Fe 15% HCl with 25 ballsealers. Swab test for oil show. If good oil show, will probably frac Lower and Upper SA together.
3. Acidize the Upper San Andres 2317-2988' with 4000 gal NE Fe 15% HCl with 50 ballsealers. Swab test for oil show.
4. Frac San Andres down casing per attached frac design. If Lower SA is not to be fraced, a decision might be made to reduce the size of the attached frac job.

Kbc/th state 1a

Zero: 7' AG

KB 1 3676'

GL : 3669'

Location: 1650' N 2310' W

F-34-173-28e

Eddy NM

### Casing Program:

Size	Wt.	Grade	Conn.	Depth
8 5/8	24	J55	STC	500'
5 1/2	17	J55	LTC	4219'
2 7/8	6.5	J55	EVE	

Artesia: Glor Yeso Pool  
96830

8 5/8" @ 500'  
350 "C" (Cir. 405x.)

11/99: Yes 3785, 92, 95, 97, 3811, 45, 57, 86, 90,  
3922, 4020, 31, 32, 71, 4073' (15)

Ardr 2000g. 15% HCl (45 BS) 6.5 @ 23/5

Ballout x1 ISI = 1331 psi FF 2200' 2% oil

HA: 27,000 g. 40# gal + 17,500 g. 20% HCl  
15 @ 1580 psi, ISI = 1342

CA: 2500 g. 15% HCl

$$P_{WDP} \equiv SP.$$

12199: PWDP rod, SN, 13 jts, TAC, 2 jts., 2' marker,  
117 jts. Ran rods 2.5 x 2 x 16 RHBC-HVR.

2317

(23) U.S.A

2988'

3128'

(12) L, SA

3785'

(15) Yeso

4073'

5 1/2" @ 4219'

500 HLC + 375 Super H (circ 35yr?)

- Sketched Not To Grade -

"AFTER"

KAR-11-11-113 Ehd3

3-782	500 SHEETS, FILLER	5 SQUARE
2-381	50 SHEETS EYE-EASE®	5 SQUARE
2-382	100 SHEETS EYE-EASE®	5 SQUARE
2-380	200 SHEETS EYE-EASE®	5 SQUARE
2-392	100 RECYCLED WHITE	5 SQUARE
2-399	200 RECYCLED WHITE	5 SQUARE

Sample in S.A.

 $7^{7/8}$ 

PBD 4177'