

UNITED STATES DEPARTMENT OF THE INTERIOR
BUREAU OF LAND MANAGEMENT
1301 W. Grand Avenue
Artesia, NM 88210

SUBMIT IN TRIPPLICATE
(This is the first copy to be submitted to the reverse side)

FORM APPROVED
OMB NO. 1004-0136
Expires: February 28, 1995

APPLICATION FOR PERMIT TO DRILL OR DEEPEN			5. LEASE DESIGNATION AND SERIAL NO. NMNM-068043	
1a. TYPE OF WORK DRILL <input checked="" type="checkbox"/> DEEPEN <input type="checkbox"/>			6. IF INDIAN, ALLOTTEE OR TRIBE NAME	
b. TYPE OF WELL OIL WELL <input checked="" type="checkbox"/> GAS WELL <input type="checkbox"/> OTHER <input type="checkbox"/> SINGLE ZONE <input checked="" type="checkbox"/> MULTIPLE ZONE <input type="checkbox"/>			7. UNIT AGREEMENT NAME	
2. NAME OF OPERATOR SDX Resources, Inc. 020451			8. FARM OR LEASE NAME, WELL NO. Otter Federal #1	
3. ADDRESS AND TELEPHONE NO. PO Box 5061, Midland, TX 79704 432/685-1761			9. API WELL NO. 30-005-63720	
4. LOCATION OF WELL (Report location clearly and in accordance with any State requirements.) At surface 860' FNL 660' FEL At proposed prod. zone Same			10. FIELD AND POOL OR WILDCAT Buffalo Valley Penn	
14. DISTANCE IN MILES AND DIRECTION FROM NEAREST TOWN OR POST OFFICE* Appx 8 miles East of Lake Arthur, NM			11. SEC., T., R., M., OR BLK. AND SURVEY OR AREA Sec 27, T15S, R27E, A	
15. DISTANCE FROM PROPOSED* LOCATION TO NEAREST PROPERTY OR LEASE LINE, FT (Also to nearest drg. unit line, if any) 660'		16. NO. OF ACRES IN LEASE 2520	17. NO. OF ACRES ASSIGNED TO THIS WELL 320	
18. DISTANCE FROM PROPOSED LOCATION* TO NEAREST WELL, DRILLING, COMPLETED, OR APPLIED FOR, ON THIS LEASE, FT. NA		19. PROPOSED DEPTH 9000'	20. ROTARY OR CABLE TOOLS Rotary	
21. ELEVATIONS (Show whether DF, RT, GR, etc.) 3491' GR			22. APPROX. DATE WORK WILL START* 11/01/04	

23. PROPOSED CASING AND CEMENTING PROGRAM				
SIZE OF HOLE	GRADE, SIZE OF CASING	WEIGHT PER FOOT	SETTING DEPTH	QUANTITY OF CEMENT
30"	20" Conductor	NA	40'	Cmt to surf w/Redi-Mix
17-1/2"	13-3/8", H-40	48	350	300 sx - Circ
12-1/4"	8-5/8", J-55	32	1800	800 sx - Circ
7-7/8"	5-1/2" N80	17	9000'	970 sx

Drill 30" hole to 40'. Set 40' of 20" conductor pipe & cmt to surf w/Redi-Mix.

Drill 17-1/2" hole to 350'. Run & set 350' of 48# H-40 ST&C csg. Cmt w/350 sx of cmt as follows: 300 sx CI C + 2% CaCl + 1/4#/sx Celoseal. Circ to surf.

Drill 12-1/4" hole to 1800'. Run & set 1800' of 8-5/8" 32# J-55 ST&C csg. Cmt w/600 sx of CI C 35/65 POZ + 1% CaCl + 1/4# Celo Flakes/sx + 5#/sx of LCM-1 + 6% Bentonite. Tail in w/200 sx of CI C + 1% CaCl. Circ.

Drill 7-7/8" hole to 9000'. Run & set 9000' of 5-1/2" 17# N-80 csg. Cmt w/970 sx CI H. Est TOC 2800'.

Will perf & stimulate as necessary for optimum production.

RECEIVED

NOV 17 2004

OCD-ARTESIA

IN ABOVE SPACE DESCRIBE PROGRAM: If proposal is to deepen, give data on present productive zone and proposed new productive zone. If proposal is to drill or deepen directionally, give pertinent data on subsurface locations and measured and true vertical depths. Give blowout preventer program, if any.

24. SIGNED <u>Bonnie Ottwater</u>	TITLE <u>Regulatory Tech</u>	DATE <u>10/05/04</u>
(This space for Federal or State office use)		

PERMIT NO. _____

Application approval does not warrant or certify that the applicant holds legal or equitable CONDITIONS OF APPROVAL, IF ANY:

(ORIG. SGD.) **ARMANDO A. LOPEZ**

APPROVED BY _____

TITLE _____

*See Instructions On Reverse Side

If earthen pits are used in association with the drilling of the well, an OCD pit permit must be obtained prior to pit construction nt to conduct operations thereon.

Assistant Field Manager,
Lands And Minerals

DATE

NOV 16 2004

APPROVED FOR 1 YEAR

Title 18 U.S.C. Section 1001, makes it a crime for any person knowingly and willfully to make to any department or agency of the United States any false, fictitious or fraudulent statements or representations as to any matter within its jurisdiction.

30

State of New Mexico

DISTRICT I

1625 N. FRENCH DR., HOBBS, NM 88240

Energy, Minerals and Natural Resources Department

DISTRICT II

1301 W. GRAND AVENUE, ARTESIA, NM 88210

DISTRICT III

1000 Rio Brazos Rd., Aztec, NM 87410

OIL CONSERVATION DIVISION

1220 SOUTH ST. FRANCIS DR.

Santa Fe, New Mexico 87505

Form C-102

Revised JUNE 10, 2003

Submit to Appropriate District Office

State Lease - 4 Copies

Fee Lease - 3 Copies

DISTRICT IV

1220 S. ST. FRANCIS DR., SANTA FE, NM 87505

WELL LOCATION AND ACREAGE DEDICATION PLAT

☐ AMENDED REPORT

API Number	Pool Code 73080	Pool Name Buffalo Valley Penn
Property Code	Property Name OTTER	Well Number 1
OGRID No. 020451	Operator Name SDX RESOURCES, INC.	Elevation 3491'

Surface Location

UL or lot No.	Section	Township	Range	Lot Idn	Feet from the	North/South line	Feet from the	East/West line	County
A	27	15-S	27-E		860	NORTH	660	EAST	CHAVES

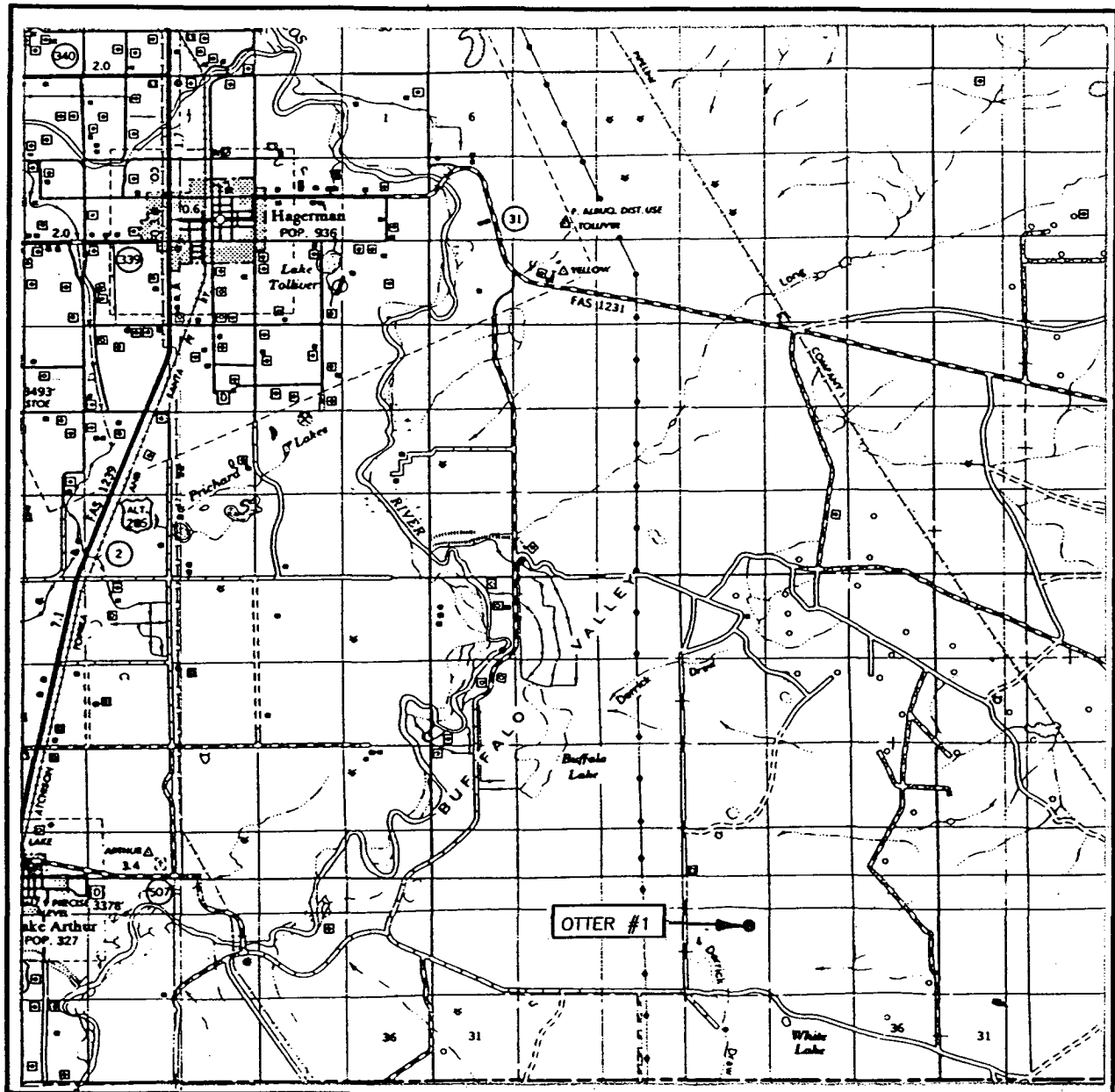
Bottom Hole Location If Different From Surface

UL or lot No.	Section	Township	Range	Lot Idn	Feet from the	North/South line	Feet from the	East/West line	County
Dedicated Acres 320	Joint or Infill	Consolidation Code	Order No.						

NO ALLOWABLE WILL BE ASSIGNED TO THIS COMPLETION UNTIL ALL INTERESTS HAVE BEEN CONSOLIDATED
OR A NON-STANDARD UNIT HAS BEEN APPROVED BY THE DIVISION


<p>GEODETIC COORDINATES NAD 27 NME</p> <p>Y=724547.0 N X=535932.6 E</p> <p>LAT.=32°59'30.46" N LONG.=104°12'58.11" W</p>	<p>OPERATOR CERTIFICATION</p> <p>I hereby certify the the information contained herein is true and complete to the best of my knowledge and belief.</p> <p><i>Bonnie Atwater</i> Signature Bonnie Atwater Printed Name Regulatory Tech Title 10/5/04 Date</p>
	<p>SURVEYOR CERTIFICATION</p> <p>I hereby certify that the well location shown on this plat was plotted from field notes of actual surveys made by me or under my supervision, and that the same is true and correct to the best of my belief.</p> <p>SEPTEMBER 24, 2004</p> <p>Date Surveyed Signature & Seal of Professional Surveyor Professional Surveyor GARY EDSON NEW MEXICO 9/29/04 04.11.1241</p>
	<p>Certificate No. GARY EDSON 12641</p>
	<p>LA</p>

VICINITY MAP



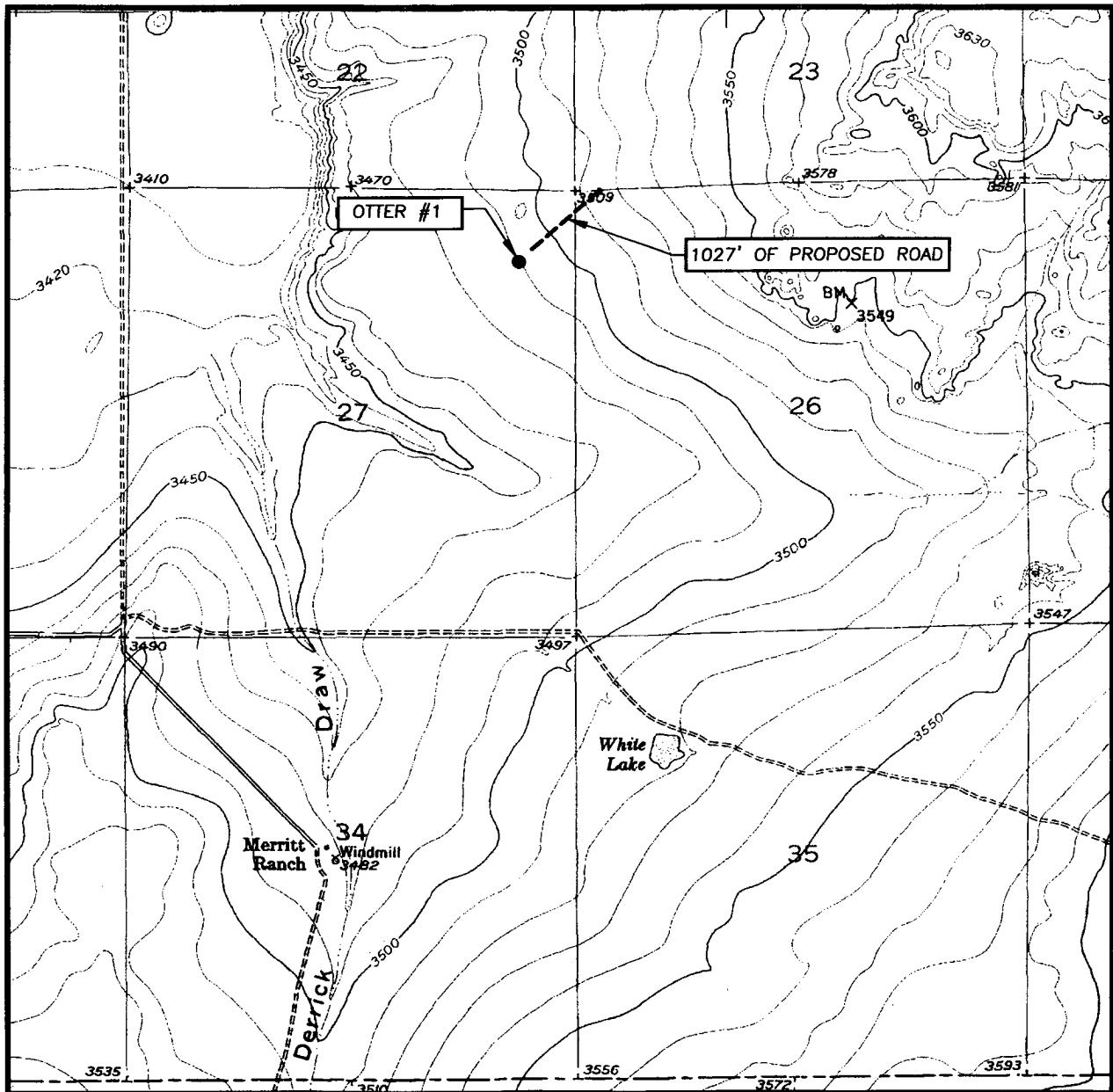
SCALE: 1" = 2 MILES

SEC. 27 TWP. 15-S RGE. 27-E
 SURVEY N.M.P.M.
 COUNTY CHAVES
 DESCRIPTION 860' FNL & 660' FEL
 ELEVATION 3491'
 OPERATOR SDX RESOURCES, INC.
 LEASE OTTER



PROVIDING SURVEYING SERVICES
 SINCE 1946
JOHN WEST SURVEYING COMPANY
 412 N. DAL PASO
 HOBBS, N.M. 88240
 (505) 393-3117

LOCATION VERIFICATION MAP



SCALE: 1" = 2000'

CONTOUR INTERVAL:
DIAMOND MOUND, N.M. - 10'

SEC. 27 TWP. 15-S RGE. 27-E

SURVEY N.M.P.M.

COUNTY CHAVES

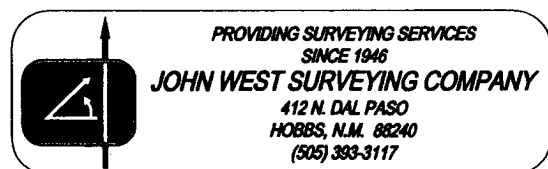
DESCRIPTION 860' FNL & 660' FEL

ELEVATION 3491'

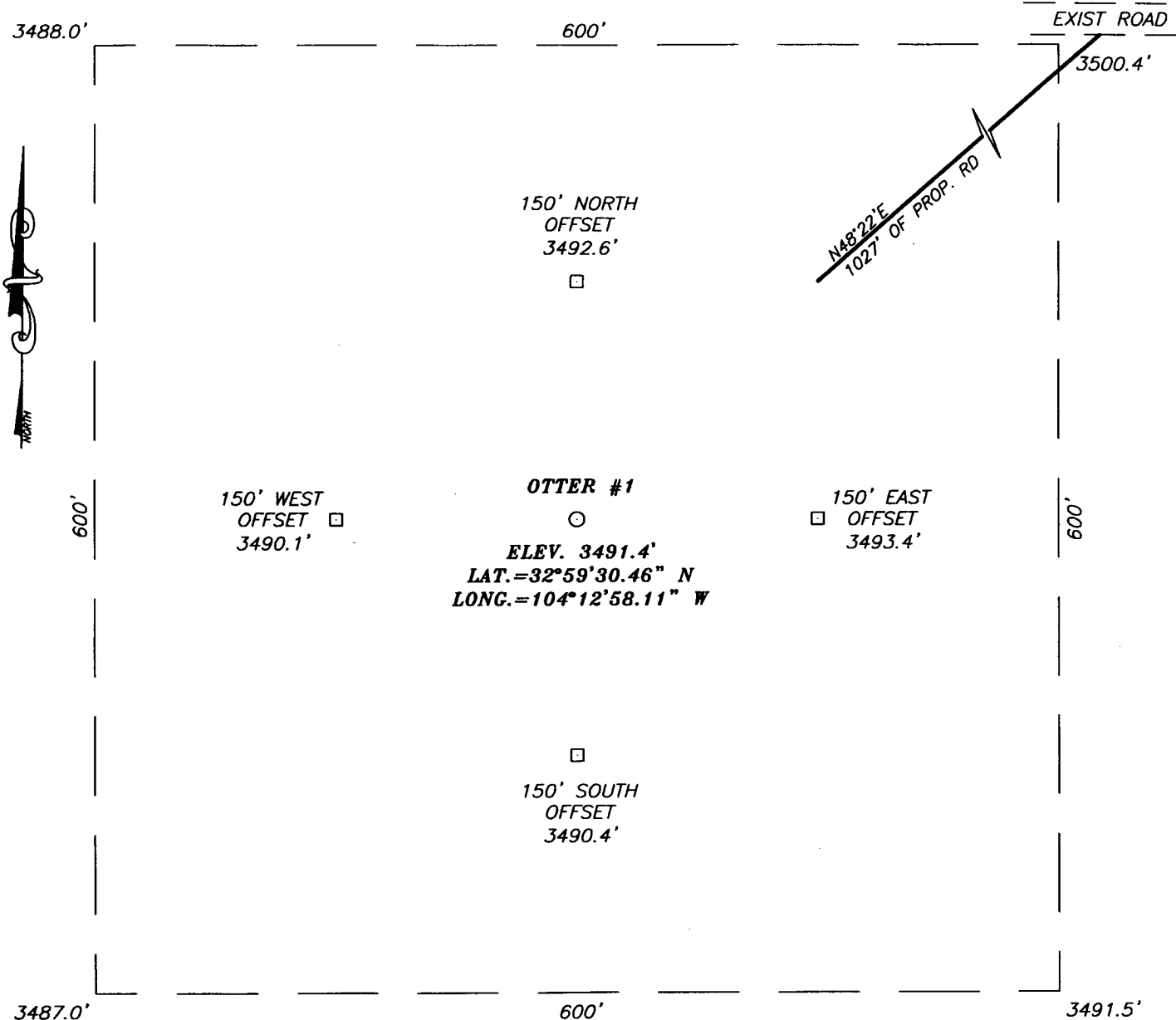
OPERATOR SDX RESOURCES, INC.

LEASE OTTER

U.S.G.S. TOPOGRAPHIC MAP
DIAMOND MOUND, N.M.

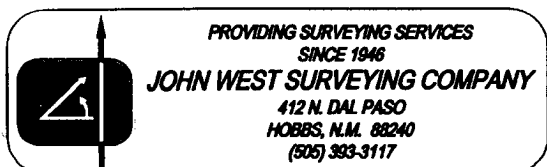
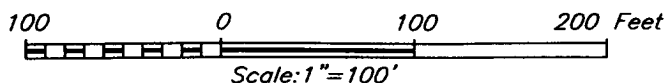


SECTION 27, TOWNSHIP 15 SOUTH, RANGE 27 EAST, N.M.P.M.,
 CHAVES COUNTY, NEW MEXICO



DIRECTIONS TO LOCATION

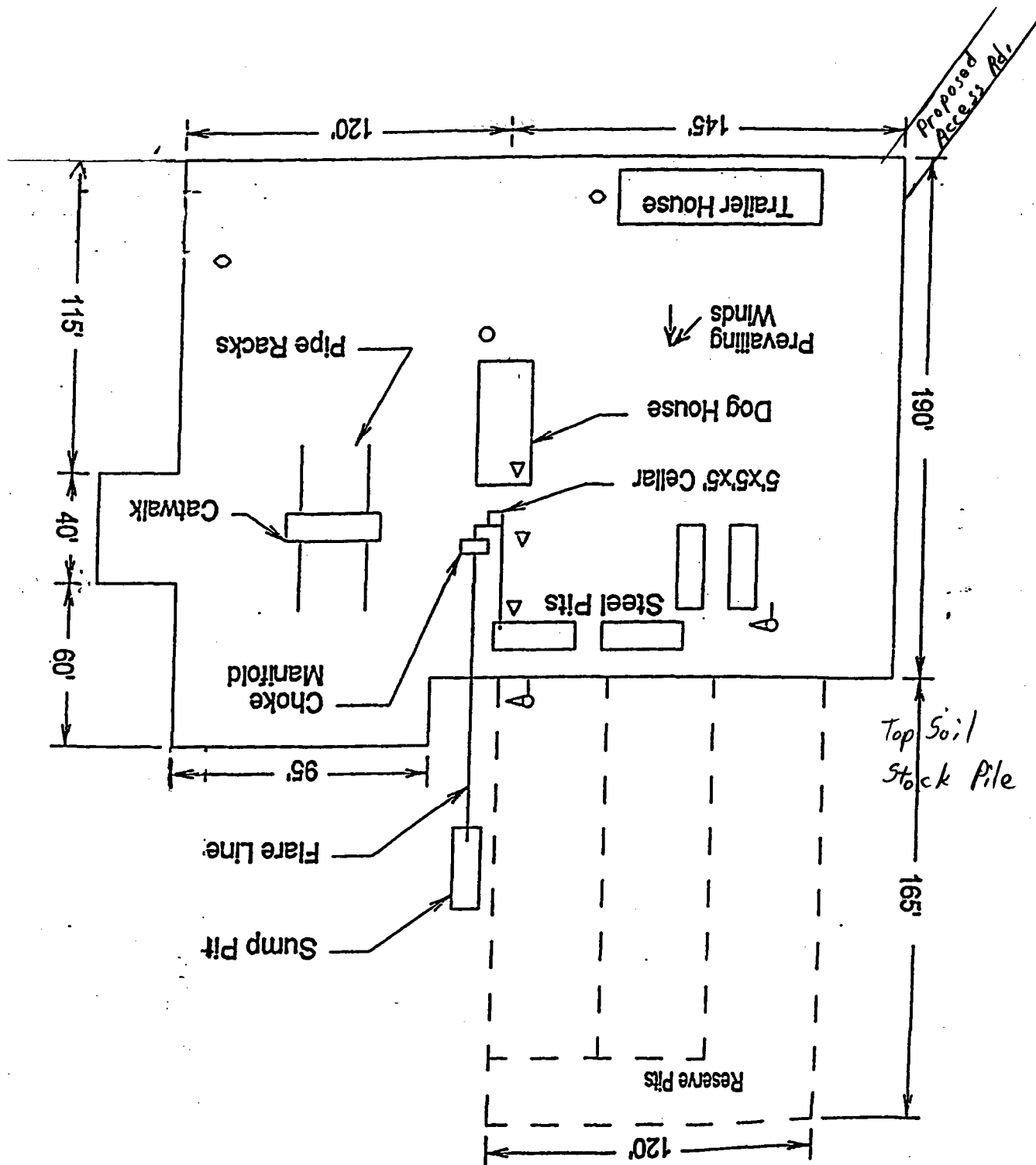
FROM THE INTERSECTION OF ST. HWY. #2 AND 11th STREET IN LAKE ARTHUR, GO EAST ON 11th STREET (TURNS INTO CO. RD. C3-31) APPROX. 5.3 MILES, TURN RIGHT ON RAT CAMP RD., GO EAST APPROX. 3.8 MILES. AT ROAD INTERSECTION GO EAST THRU CATTLEGUARD AND GO APPROX. 1.9 MILES. TURN LEFT (NORTH) AND GO APPROX. 0.6 MILES. TURN LEFT (NW) AT THE READ & STEVENS HARRIS FED. #4 WELL AND GO APPROX. 0.7 MILES, ROAD TURNS RIGHT (NORTH) BY READ & STEVENS SIGN. GO NORTH APPROX. 0.2 MILES TO PROPOSED ROAD SURVEY. FOLLOW PROPOSED ROAD SURVEY APPROX. 1027' SOUTHWEST TO THIS LOCATION.



SDX RESOURCES, INC.

OTTER #1 WELL
 LOCATED 860 FEET FROM THE NORTH LINE
 AND 660 FEET FROM THE EAST LINE OF SECTION 27,
 TOWNSHIP 15 SOUTH, RANGE 27 EAST, N.M.P.M.,
 CHAVES COUNTY, NEW MEXICO.

Survey Date: 9/24/04	Sheet 1 of 1 Sheets
W.O. Number: 04.11.1241	Dr By: LA
Date: 9/28/04	Disk: CD#3
04111241	Scale: 1"=100'



- △ Wind Direction Indicators (wind sock or streamers)
- △ H2S Monitors (alarms at bell nipple and shale shaker)
- Briefing Areas
- Remote BOP Closing Unit
- Sign and Condition Flags

N

EXHIBIT #5
Drillsite & Rig Layout Sketch
Offet Fed #1

STATEMENT ACCEPTING RESPONSIBILITY FOR OPERATIONS

SDX Resources Inc.
PO Box 5061
Midland, TX 79704
432/685-1761

October 5, 2004

The undersigned accepts all applicable terms, conditions, stipulations and restrictions concerning operations conducted on the leased land or portion thereof, as described below:

Lease No.:	NMNM-068043
Lease Name:	Otter Federal #1
Legal Description of Land:	Unit A, 860' FNL 660' FEL Sec. 27, T15S, R27E Chaves Co., NM
Formation (s):	Buffalo Valley Penn
Bond Coverage:	Statewide Bond - State of New Mexico
BLM Bond File No.:	NM2307

Authorized Signature:



John Pool
Vice-President

DRILLING PROGRAM
SDX Resources, Inc.
Otter Federal # 1
860' FNL, 660' FEL
Unit A , Sec. 27, T15S, R27E
Eddy Co., NM

1. Geologic Name of Surface Formation:

Permian

2. Estimated Tops of Important Geologic Markers:

San Andres	1600'	Atoka	8300'
Tubb	4400'	Mississippian Lime	8700'
Hueco	6400'		
Cisco	7050'		
Strawn	8000'		

3. Estimated Depth of Anticipated Oil or Gas:

Cisco	7500'	Gas
Strawn	8000'	Gas
Atoka	8300'	Gas

4. Casing Program:

<u>Hole Size</u>	<u>Interval</u>	<u>OD Csg</u>	<u>Weight Grade Jt Cond Type</u>
30"	0-40	20"	Conductor Pipe
17-1/2"	0 - 350	13-3/8"	48#, H-40, 8 rd., ST&C, New
12-1/4"	0 - 1800	8-5/8"	32#, J-55, 8 rd., LT&C, New
7-7/8"	0- 9000	5-1/2"	17#, N-80, 8-rd., LT&C, New

Cement Program:

20" conductor pipe:	Redi-mixed to surface
13-3/8" Surface Casing:	350' cemented to surface with 300 sx of "C" with 2% CaCl & 1/4# /sack celoseal.
8-5/8" Intermediate	1800' cemented to surface with 600 sxs 35/65 POZ "C" + additives, and 200 sxs. "C" + 2% CaCL.
5-1/2" Production Casing:	9000' cemented with 970 sxs. Class "H" with additives as needed.

5. Minimum Specifications for Pressure Control:

The blowout preventer equipment (BOP) are shown in Exhibit #1A&B. They will consist of an annular bag type preventer on top of a double ram 5000# WP BOP. Unit will be hydraulically operated. BOP will be nipped up on the 13-3/8" surface csg and used continuously until TD is reached. BOP and accessory equipment will be tested to API

specifications. BOP rams will be operated once every 24 HRS. and blind rams will be operated every time pipe is out of the hole. A 2" kill line and a 2" choke line will be included in the drilling spool. Other accessories to the BOP equipment will include a kelly cock and a stabbing valve.

6. Types and Characteristics of the Proposed Mud System:

The well will be drilled to TD with a combination of fresh water and brine water mud system. The applicable depth and properties of this system are as follows:

<u>Depth</u>	<u>Type</u>	<u>Weight (ppg)</u>	<u>Viscosity (sec)</u>	<u>Waterloss (cc)</u>	
40 - 350	FW	8.5	32-36	NC	FWG, paper, lime
350 - 1800	FW	8.5	32-36	NC	"
1800-TD	cut Brine	8.8-9.5	32-50	6-15	Polymer, caustic

Sufficient mud materials to maintain mud properties and meet minimum lost circulation and weight increase requirements will be kept on location or available at the nearest stocking point.

7. Auxiliary Well Control and Monitoring Equipment:

- A. A kelly cock will be kept in the drill string at all times.
- B. A mud logging unit complete with H₂S detector will be continuously monitoring drilling penetration rate and hydrocarbon shows from 5000' to TD.

8. Logging, Testing and Coring Program:

- A. Drillstem tests will be run on the basis of drilling shows.
- B. The electric logging program will consist of GR-Dual Laterolog and GR-Compensated Neutron-Density from TD to intermediate casing. Gr-CNL to surface.
- C. Side wall coring may be performed in select intervals if deemed necessary.
- D. Further testing procedures will be determined after the production casing has been cemented at TD based on drill shows and log evaluation.

9. Abnormal Conditions, Pressures, Temperatures, & Potential Hazards:

No abnormal pressure or temperatures are anticipated. The estimated bottom hole temperature (BHT) at TD is 150° and estimated maximum bottom-hole pressure (BHP) is 4200 psig. No abnormal concentrations of hydrogen sulfide or other hazardous gases or fluids have been encountered, reported or are known to exist at this depth in this area. All H₂S operation precautions will be followed (see attached H₂S drilling operations plans). No major loss circulation zones have been reported in offsetting wells.

Otter Federal #2- Drilling Program

10. Anticipated Starting Date and Duration of Operations:

Road and location work will not begin until approval has been received from the BLM. The anticipated spud date is November 1, 2004. Once commenced, the drilling operation should be finished in approximately 30 days. If the well is productive, an additional 30 days will be required for completion and testing before a decision is made to install permanent facilities.

HYDROGEN SULFIDE DRILLING OPERATIONS PLAN
SDX Resources Inc.
Otter Federal #1
860' FNL, 660' FEL
Sec. 27, T15S, R27E, Unit A
Eddy Co., NM

I. Hydrogen Sulfide Training

All personnel, whether regularly assigned, contracted, or employed on an unscheduled basis, will receive training from a qualified instructor in the following areas prior to commencing drilling operations on this well:

1. The hazards and characteristics of hydrogen sulfide (H₂S).
2. The proper use and maintenance of personal protective equipment and life support system.
3. The proper use of H₂S detectors, alarms, warning systems, briefing areas, evacuation procedures, and prevailing winds.
4. The proper techniques for first aid and rescue procedures.

In addition, supervisory personnel will be trained in the following areas:

1. The effects of H₂S on metal components. If high tensile tubulars are to be used, personnel will be trained in their special maintenance requirements.
2. Corrective action and shut-in procedures when drilling or reworking a well and blowout prevention and well control procedures.
3. The contents and requirements of the H₂S Drilling Operations Plan and the Public Protection Plan.

This location is not within 3000' of any public roadway or dwelling. Therefore an H₂S Contingency Plan is not necessary.

There will be an initial safety session just prior to commencing operations on the well. The initial session shall include a review of the site's specific H₂S Drilling Operations Plan. This plan shall be available at the well site. All personnel will be required to carry documentation that they have received the proper training.

II. H₂S SAFETY EQUIPEMNT AND SYSTEMS

Note: All H₂S safety equipment and systems will be installed, tested, and operational when drilling reaches a depth of 700'.

1. Well Control Equipment:
 - A. Annular Preventer to accommodate all pipe sizes with properly sized closing unit.
2. Protective Equipment for Essential Personnel:
 - A. Mark II Surviveair 30-minute units located on site.

3. H2S Detection and Monitoring Equipment:

- A. 1 – portable H2S monitor positioned on location for best coverage and response.
- B. Mud logging trailer shall have H2S monitoring equipment.

4. Visual Warning Systems:

- A. Guy lines will be flagged and a wind sock will be positioned on location.
- B. Caution/Danger signs shall be posted on roads providing direct access to location.

5. Mud Program:

The mud program has been designed to minimize the volume of H2S circulated to the surface. Proper mud weight, safe drilling practices, will minimize hazards when penetrating H2S bearing zones.

6. Metallurgy:

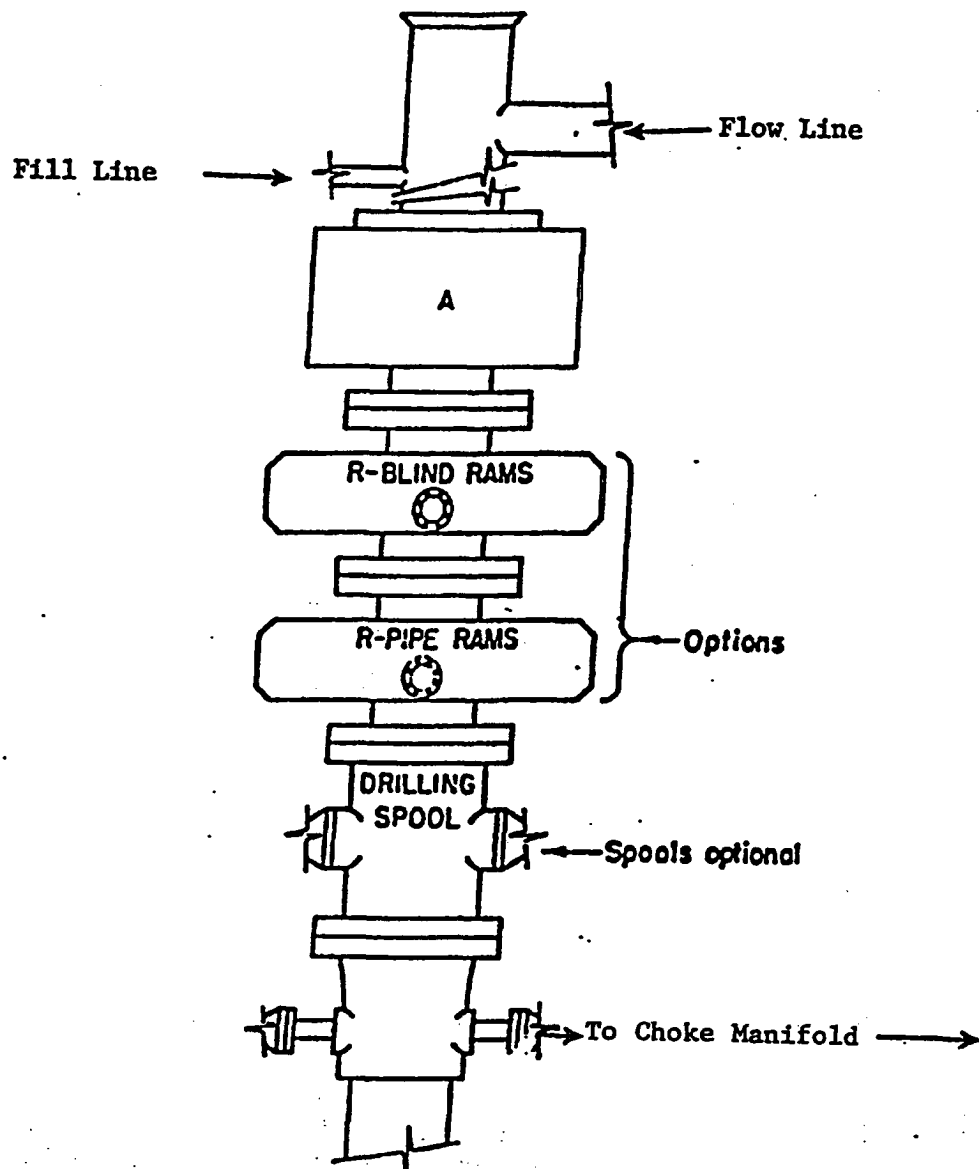
All drill strings, casings, tubing, wellhead, blowout preventers, drilling spool, kill lines, choke manifold and lines, and valves shall be suitable for H2S service as necessary.

7. Communication:

Radio communications in company vehicles including cellular telephone and 2-way radio.

8. Well Testing:

No DST's are planned.



ARRANGEMENT SRRA

1500 Series
5000# Working Pressure

EXHIBIT #1A
BOP

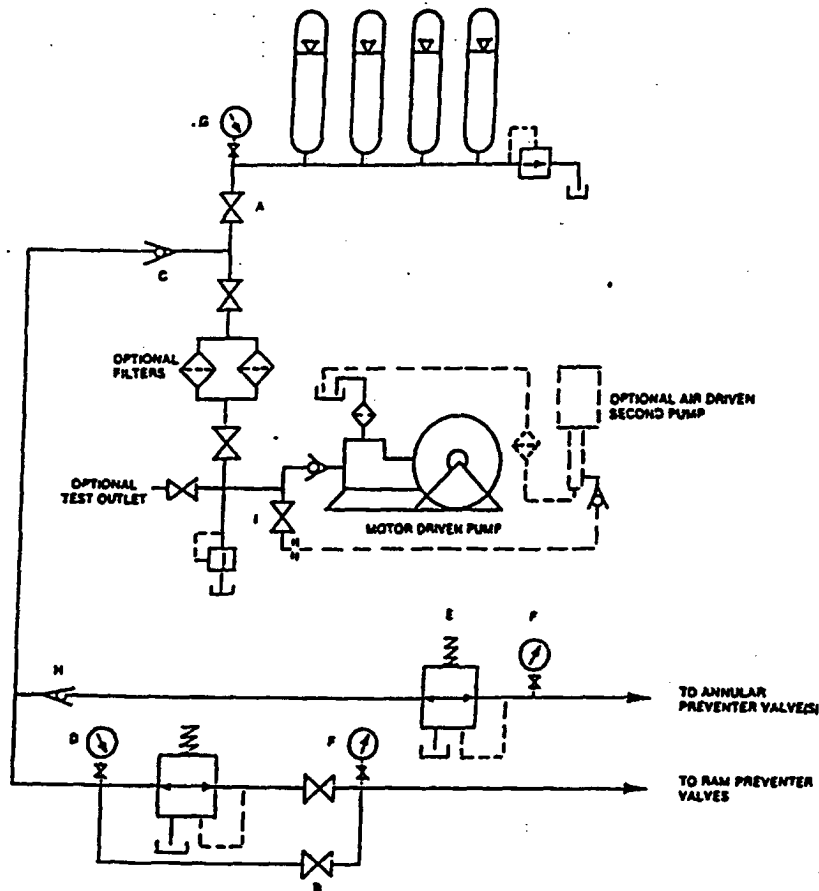


FIGURE K6-1. The schematic sketch of an accumulator system shows required and optional components.

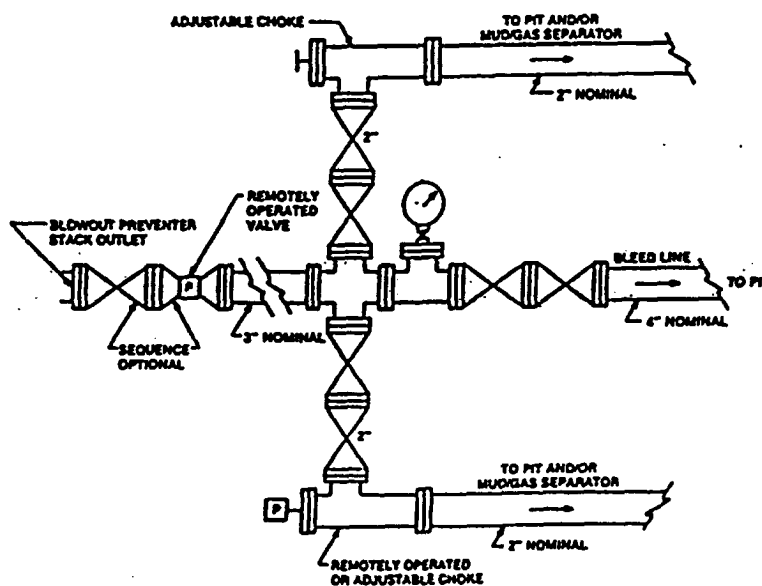


FIGURE K4-2. Typical choke manifold assembly for 5M rated working pressure service — surface installation.

UNITED STATES
DEPARTMENT OF THE INTERIOR
BUREAU OF LAND MANAGEMENT

Artesia, NM 88210

FORM APPROVED
Budget Bureau No. 1004-0135
Expires: March 31, 1993

SUNDRY NOTICES AND REPORTS ON WELLS

Do not use this form for proposals to drill or to deepen or reentry to a different reservoir.
Use "APPLICATION FOR PERMIT-" for such proposals

SUBMIT IN TRIPLICATE

RECEIVED

NOV 17 2004

660 ARTESIA

1. Type of Well

☐ Oil Well ☒ Gas Well ☐ Other

2. Name of Operator

SDX Resources, Inc. 020451

3. Address and Telephone No.

PO Box 5061, Midland, TX 79704 432/685-1761

4. Location of Well (Footage, Sec., T., R., M., or Survey Description)

660' FNL 660' FEL
Sec 27, T15S, R27E, A

5. Lease Designation and Serial No.

NMMN-068043

6. If Indian, Allottee or Tribe Name

7. If Unit or CA, Agreement Designation

8. Well Name and No.

Otter Federal #1

9. API Well No.

10. Field and Pool, or Exploratory Area

Buffalo Valley Penn

11. County or Parish, State

Chaves Co., NM

12. CHECK APPROPRIATE BOX(s) TO INDICATE NATURE OF NOTICE, REPORT, OR OTHER DATA

TYPE OF SUBMISSION

- ☐ Notice of Intent
- ☒ Subsequent Report
- ☐ Final Abandonment Notice

TYPE OF ACTION

- ☐ Abandonment
- ☐ Recompletion
- ☐ Plugging Back
- ☐ Casing Repair
- ☐ Altering Casing
- ☒ Other Revised Exhibits to APD
- ☐ Change of Plans
- ☐ New Construction
- ☐ Non-Routine Fracturing
- ☐ Water Shut-Off
- ☐ Conversion to Injection
- ☐ Dispose Water

(Note: Report results of multiple completion on Well Completion or Recompletion Report and Log form.)

13. Describe Proposed or Completed Operations (Clearly state all pertinent details, and give pertinent dates, including estimated date of starting any proposed work. If well is directionally drilled, give subsurface locations and measured and true vertical depths for all markers and zones pertinent to this work.)*

Attached are revised exhibits showing amended rig orientation and access roads.

14. I hereby certify that the foregoing is true and correct

Signed

Bonnie Ottwater

Title Regulatory Tech

Date 09/15/04

(This space for Federal or State office use)

Approved by

(ORIG. SGD.) ARMANDO A. LOPEZ

Acting

Assistant Field Manager,

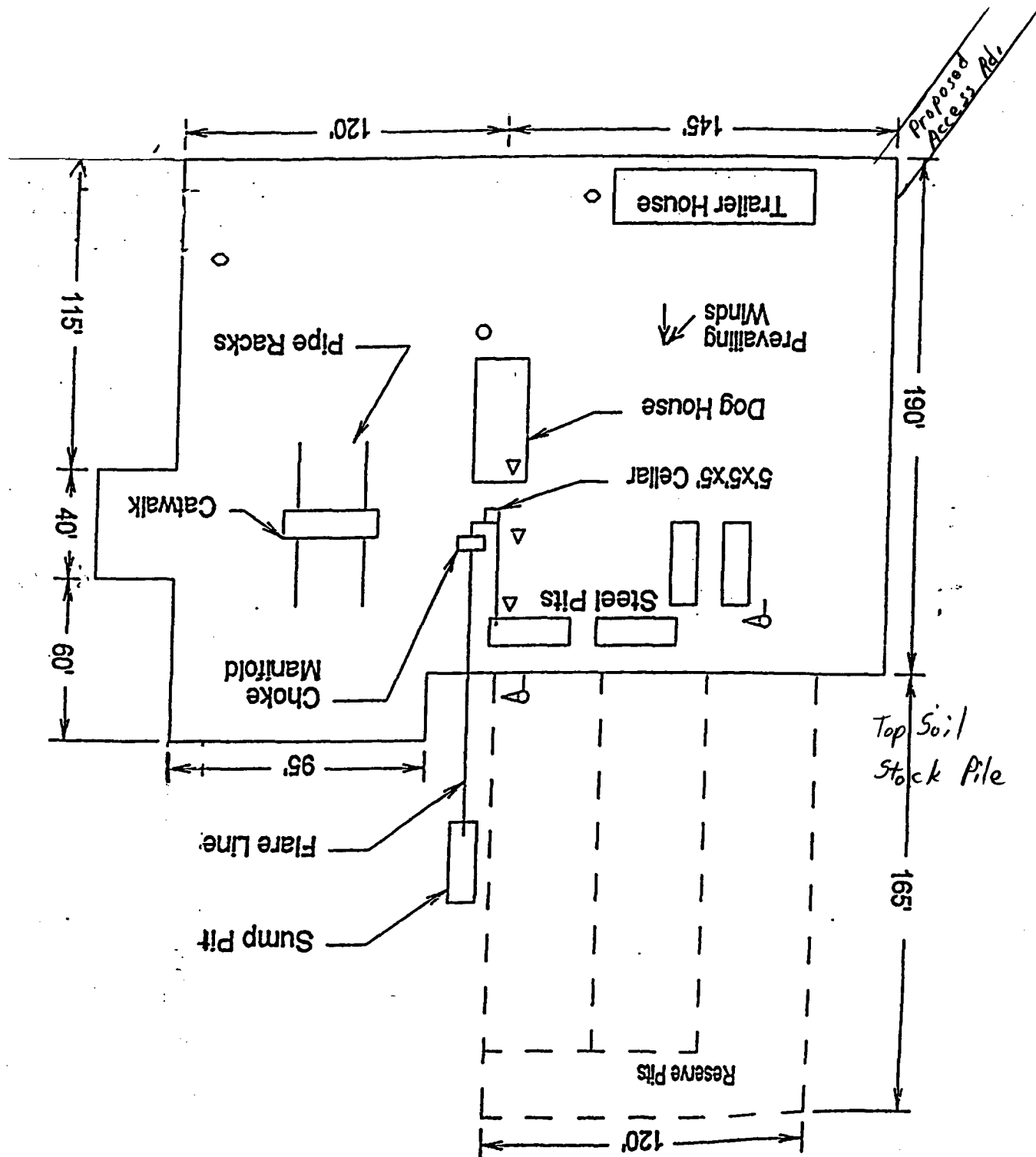
Title

Lands And Minerals

Date

NOV 16 2004

Conditions of approval, if any:

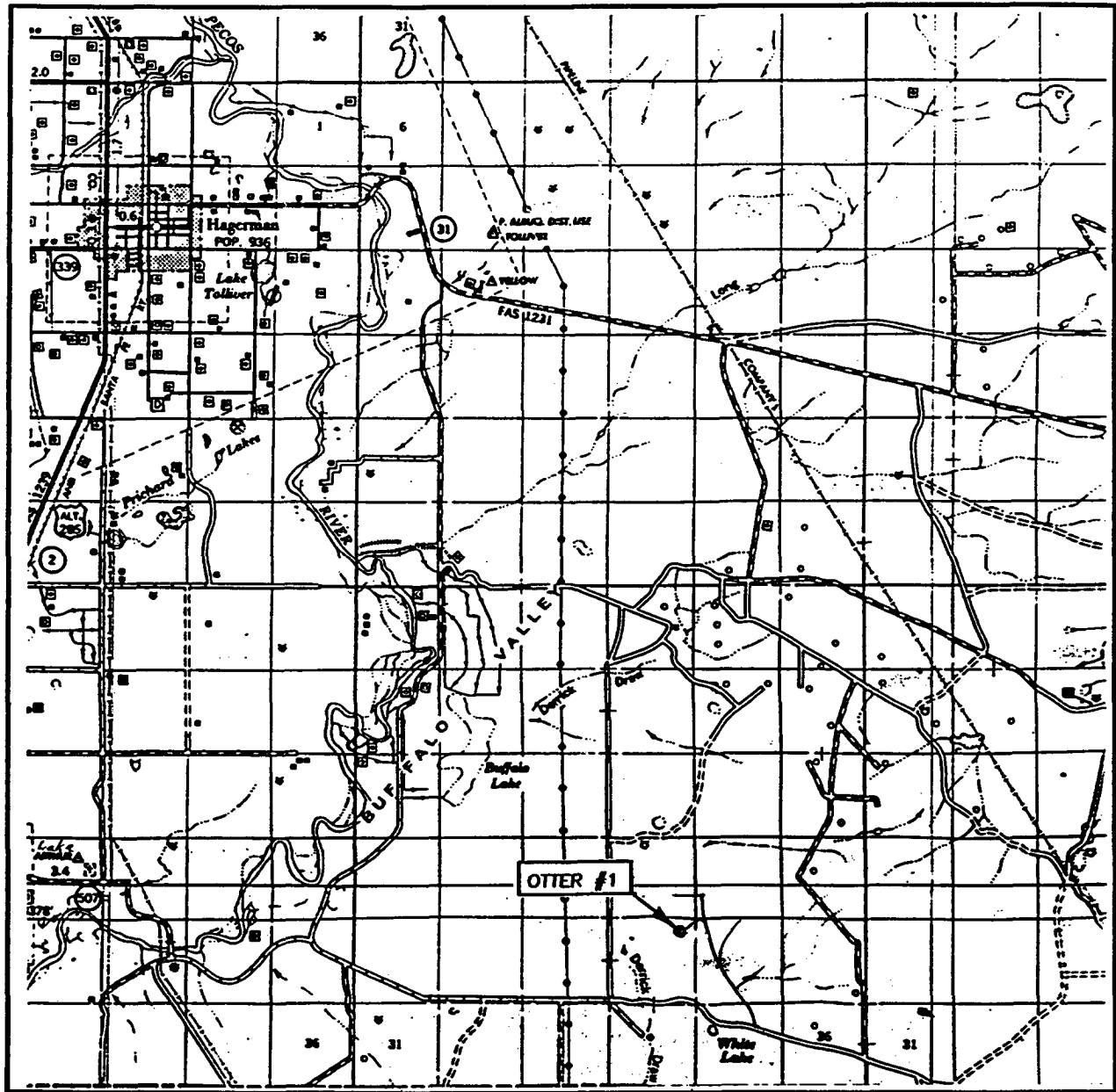


- △ Wind Direction Indicators (wind sock or streamers)
- △ H2S Monitors (alarms at bell nipple and shale shaker)
- Briefing Areas
- Remote BOP Closing Unit
- Sign and Condition Flags

N

EXHIBIT #5
Drillsite & Rig Layout Sketch

VICINITY MAP



SCALE: 1" = 2 MILES

SEC. 27 TWP. 15-S RGE. 27-E
 SURVEY N.M.P.M.
 COUNTY CHAVES
 DESCRIPTION 660' FNL & 660' FEL
 ELEVATION 3493'
 OPERATOR SDX RESOURCES, INC.
 LEASE OTTER

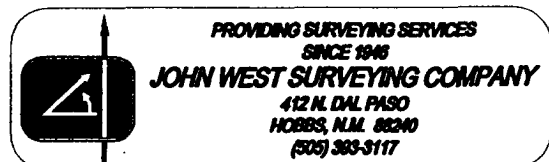
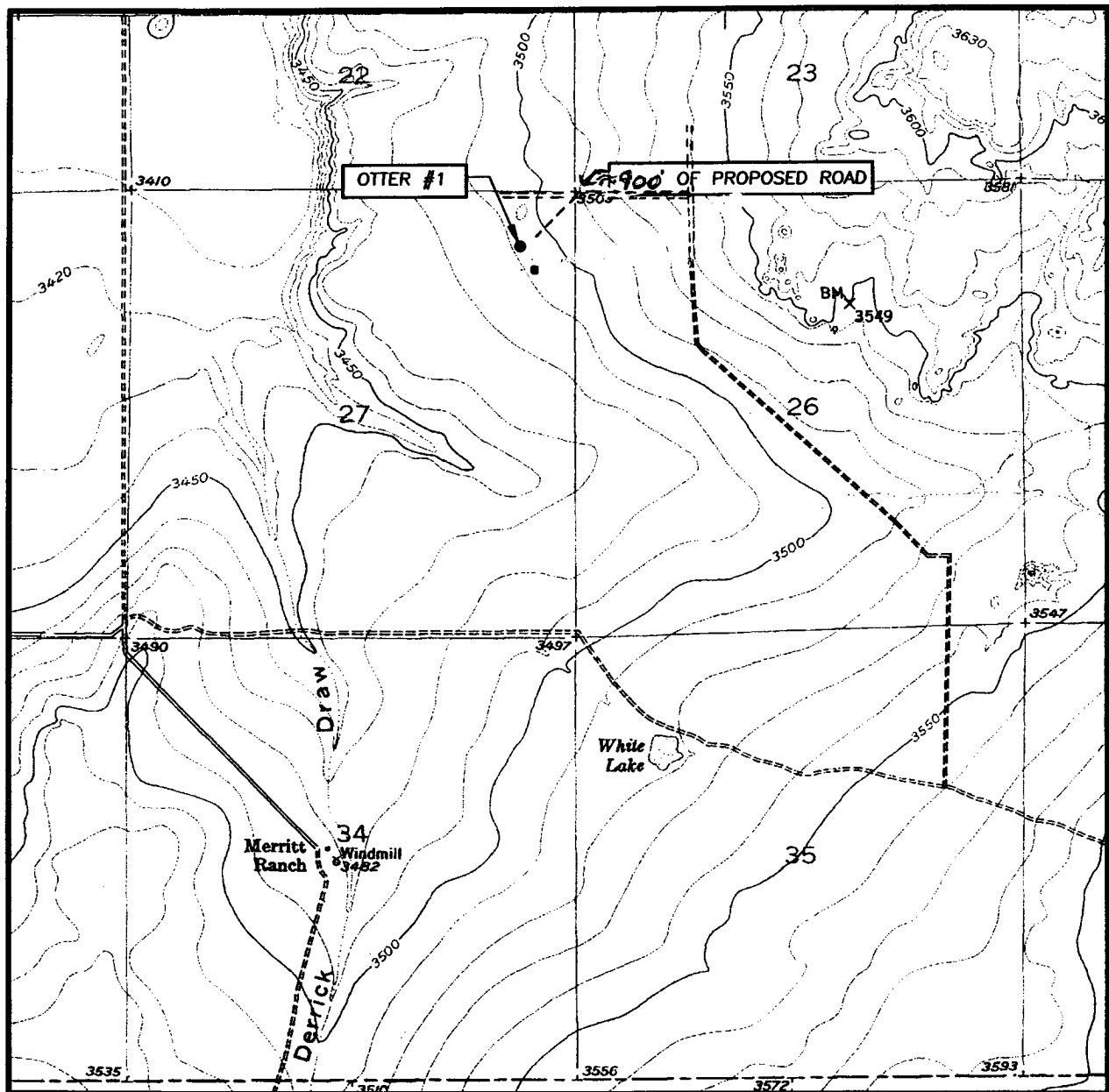


EXHIBIT #3A

LOCATION VERIFICATION MAP



SCALE: 1" = 2000'

CONTOUR INTERVAL:
DIAMOND MOUND, N.M. - 10'

SEC. 27 TWP. 15-S RGE. 27-E

SURVEY N.M.P.M.

COUNTY CHAVES

DESCRIPTION 660' FNL & 660' FEL

ELEVATION 3493'

OPERATOR SDX
RESOURCES, INC.

LEASE OTTER

U.S.G.S. TOPOGRAPHIC MAP
DIAMOND MOUND, N.M.

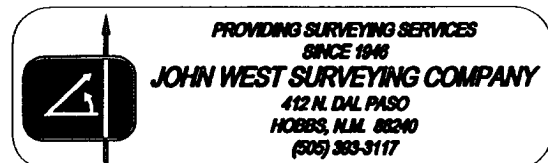
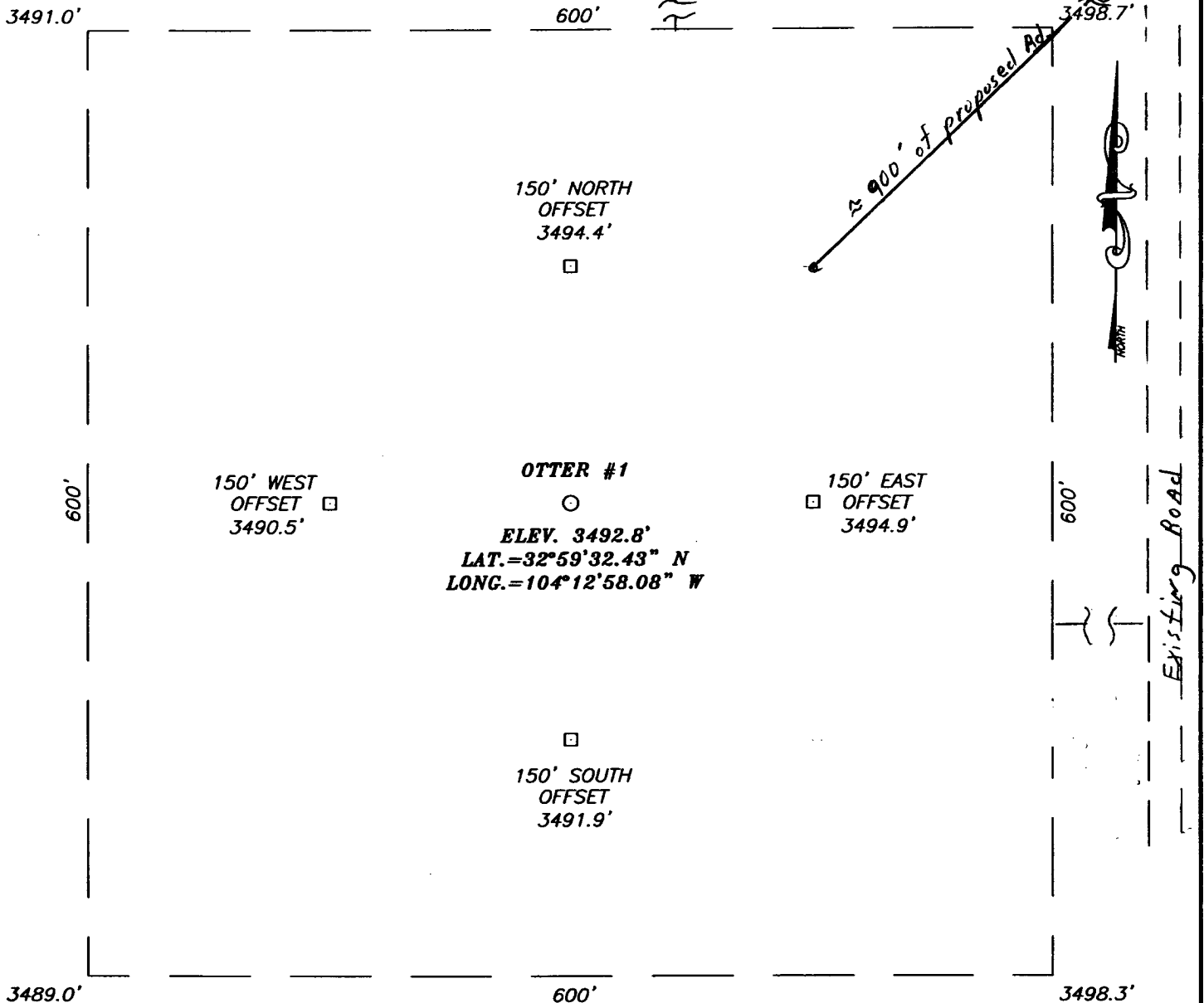


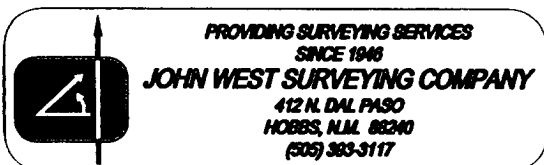
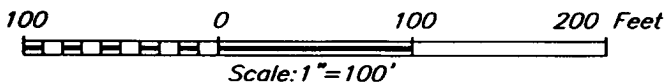
EXHIBIT #3B

SECTION 27, TOWNSHIP 15 SOUTH, RANGE 27 EAST, N.M.P.M.,
CHAVES COUNTY, NEW MEXICO



DIRECTIONS TO LOCATION

FROM THE INTERSECTION OF ST. HWY. #2 AND 11th STREET IN LAKE ARTHUR, GO EAST ON 11th STREET (TURNS INTO CO. RD. C3-31) APPROX. 5.3 MILES, TURN RIGHT ON RAT CAMP RD., GO EAST APPROX. 3.8 MILES. AT ROAD INTERSECTION GO EAST THRU CATTLEGUARD AND GO APPROX. 1.9 MILES. TURN LEFT (NORTH) AND GO APPROX. 0.6 MILES. TURN LEFT (NW) AT THE READ & STEVENS HARRIS FED. #4 WELL AND GO APPROX. 0.7 MILES, ROAD TURNS RIGHT (NORTH) BY READ & STEVENS SIGN. GO NORTH APPROX. 0.2 MILES TO PROPOSED ROAD SURVEY. FOLLOW PROPOSED ROAD SURVEY APPROX. 1879' WEST TO PROPOSED LOCATION.



SDX RESOURCES, INC.

OTTER #1 WELL
LOCATED 660 FEET FROM THE NORTH LINE
AND 660 FEET FROM THE EAST LINE OF SECTION 27,
TOWNSHIP 15 SOUTH, RANGE 27 EAST, N.M.P.M.,
CHAVES COUNTY, NEW MEXICO.

Survey Date: 07/29/04	Sheet 1 of 1 Sheets
W.O. Number: 04.11.0941	Dr By: J. RIVERO
Date: 08/4/04	Disk: CD#10
04110941	Scale: 1"=100'