

DEPART
BURE

APPLICATION F

If earthen pits are used in association with the drilling of this well, an OCD pit permit must be obtained prior to pit construction.

DEEPEN ☐Instructions on
the side
18. DIV-Dist. 2
Grand Avenue
NM 88210FORM APPROVED
OMB NO. 1004-0136
Expires: February 28, 1995

5. LEASE DESIGNATION AND SERIAL NO.

NM-0374057A

IF INDIAN, ALLOTTEE OR TRIBE NAME

1a. TYPE OF WORK

DRILL ☒

b. TYPE OF WELL

OIL
WELL ☐GAS
WELL ☒

OTHER

SINGLE
ZONE ☒MULTIPLE
ZONE ☐HEC PETROLEUM INC
500 WEST ILLINOIS
MIDLAND TX 79701

9812

N KRAWIETZ 432-498-2655)

EXAS 79701 432-498-2655

4. LOCATION OF WELL (Report location clearly and in accordance with any State requirements.)

At surface

1117' FNL & 1147' FWL SECTION 24 T21S-R25E EDDY CO. NM

At proposed prod. zone

SAME

W.D

7. UNIT AGREEMENT NAME

CATCLAW DRAW UNIT 4876

8. FARM OR LEASE NAME, WELL NO.

CATCLAW DRAW UNIT # 19

9. API WELL NO.

30 - 015 - 3382

10. FIELD AND POOL, OR WILDCAT

CATCLAW DRAW-MORROW

11. SEC., T., R., M., OR BLK.
AND SURVEY OR AREA 74320

SECTION 24T21S-R25E

12. COUNTY OR PARISH

EDDY CO.

13. STATE

NEW MEXICO

14. DISTANCE IN MILES AND DIRECTION FROM NEAREST TOWN OR POST OFFICE*

Approximately 12 miles Northwest of Carlsbad New Mexico

15. DISTANCE FROM PROPOSED*

LOCATION TO NEAREST
PROPERTY OR LEASE LINE, FT.
(Also to nearest drlg. unit line, if any)

4133' U-line

16. NO. OF ACRES IN LEASE

5120 Acres in unit

18. DISTANCE FROM PROPOSED LOCATION*
TO NEAREST WELL, DRILLING, COMPLETED,
OR APPLIED FOR, ON THIS LEASE, FT.

2700'

10,600'

17. NO. OF ACRES ASSIGNED
TO THIS WELL

640

20. ROTARY OR CABLE TOOLS

ROTARY

21. ELEVATIONS (Show whether DF, RT, GR, etc.)

3368' GR.

22. APPROX. DATE WORK WILL START*

WHEN APPROVED

23.

PROPOSED CASING AND CEMENTING PROGRAM

SIZE OF HOLE	GRADE SIZE OF CASING	WEIGHT PER FOOT	SETTING DEPTH	QUANTITY OF CEMENT
25"	Conductor	NA	40'	Cement to surface W/Redi-mix.
17½"	H-40 13 3/8"	48	350'	350 Sx. circulate cement
12¼"	J-55 9 5/8"	36	1750'	750 Sx. " "
7 7/8"	N-80 5½"	17	10,600'	2000 Sx. 2300' or surface

CARLSBAD CONTROLLED WATER BASIN

1. Drill 25" hole to 40'. Set 40' of 20" conductor pipe and cement to surface with Redi-mix.
2. Drill 17½" hole to 350'. Run and set 350' of 13 3/8" 48# H-40 ST&C casing. Cement with 350 Sx. of Class "C" cement + 2% CaCl, + ½# Flocele/Sx. circulate cement to surface.
3. Drill 12¼" hole to 1750'. Run and set 1750' of 9 5/8" 36# J-55 ST&C casing. Cement with 700 Sx. of Class "C" cement + additives, circulate cement to surface.
4. Drill 7 7/8" hole to 10,600'. Run and set 10,600' of 5½" N-80 17# LT&C casing. Cement with 1500 Sx. of Class "H" POZ + additives, tail in with 500 Sx. of Class "H" Premium POZ cement + additives estimate top of cement 2300' from surface

RECEIVED

DEC 21 2004

IN ABOVE SPACE DESCRIBE PROPOSED PROGRAM: If proposal is to deepen, give data on present productive zone and proposed new productive zone. If deepening directionally, give pertinent data on subsurface locations and measured and true vertical depths. Give blowout preventer program, if any.

24.

SIGNED

TITLE

Agent

APPROVAL SUBJECT TO

GENERAL REQUIREMENTS 07/25/04

AND SPECIAL STIPULATIONS

ATTACHED

(This space for Federal or State office use)

PERMIT NO.

APPROVAL DATE

Application approval does not warrant or certify that the applicant holds legal or equitable title to those rights in the subject lease which would entitle the applicant to conduct operations thereon.
CONDITIONS OF APPROVAL, IF ANY:

ACTING

APPROVED BY /s/ Joe G. Lara

TITLE

FIELD MANAGER

DATE

17 DEC 2004

*See Instructions On Reverse Side

APPROVAL FOR 1 YEAR

DISTRICT I
1625 N. FRENCH DR., HOBBS, NM 88240

DISTRICT II
1301 W. GRAND AVENUE, ARTESIA, NM 88210

DISTRICT III
1000 Rio Brazos Rd., Aztec, NM 87410

DISTRICT IV
1220 S. ST. FRANCIS DR., SANTA FE, NM 87505

State of New Mexico
Energy, Minerals and Natural Resources Department

OIL CONSERVATION DIVISION
1220 SOUTH ST. FRANCIS DR.
Santa Fe, New Mexico 87505

Form C-102
Revised JUNE 10, 2003
Submit to Appropriate District Office
State Lease - 4 Copies
Fee Lease - 3 Copies

WELL LOCATION AND ACREAGE DEDICATION PLAT

☐ AMENDED REPORT

API Number	Pool Code 74320	Pool Name CATCLAW DRAW-MORROW (PRORATED GAS)
Property Code 4876	Property Name CATCLAW DRAW FEDERAL	Well Number 19
OGRID No. 150628	Operator Name PURE RESOURCES, L.P.	Elevation 3368'

Surface Location

UL or lot No.	Section	Township	Range	Lot Idn	Feet from the	North/South line	Feet from the	East/West line	County
D	24	21-S	25-E		1117'	NORTH	1147'	WEST	EDDY

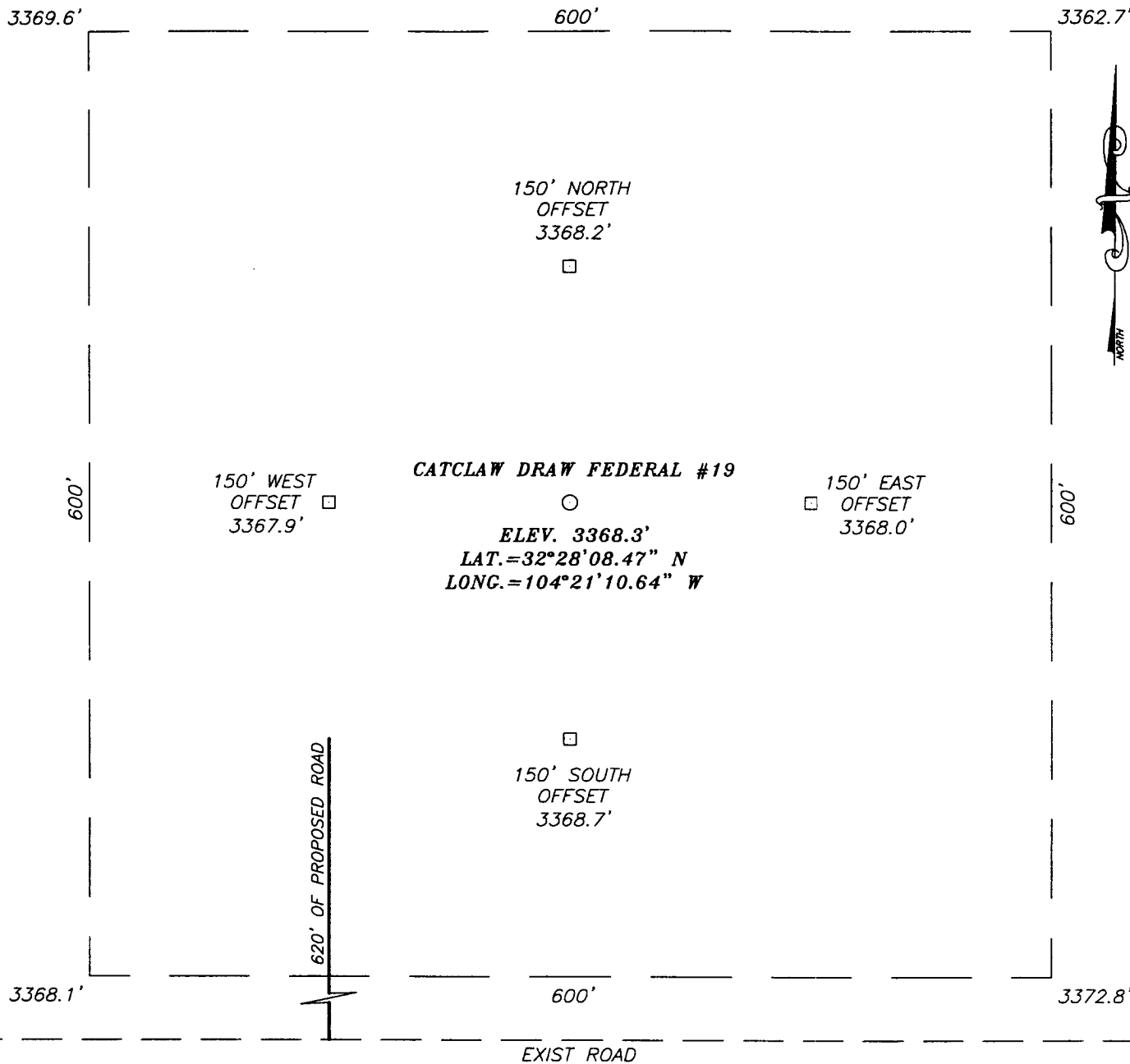
Bottom Hole Location If Different From Surface

UL or lot No.	Section	Township	Range	Lot Idn	Feet from the	North/South line	Feet from the	East/West line	County
Dedicated Acres 640	Joint or Infill	Consolidation Code	Order No.						

NO ALLOWABLE WILL BE ASSIGNED TO THIS COMPLETION UNTIL ALL INTERESTS HAVE BEEN CONSOLIDATED
OR A NON-STANDARD UNIT HAS BEEN APPROVED BY THE DIVISION

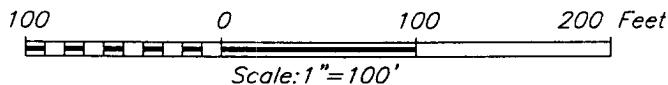
<p>GEODETIC COORDINATES NAD 27 NME Y=534343.4 N X=493948.5 E LAT.=32°28'08.47" N LONG.=104°21'10.64" W</p> <p>Existing Well</p>	<p>OPERATOR CERTIFICATION</p> <p>I hereby certify the the information contained herein is true and complete to the best of my knowledge and belief.</p> <p><i>Joe T. Janica</i> Signature Joe T. Janica Printed Name Agent Title 07/24/04 Date</p> <p>SURVEYOR CERTIFICATION</p> <p>I hereby certify that the well location shown on this plat was plotted from field notes of actual surveys made by me or under my supervision, and that the same is true and correct to the best of my belief.</p> <p>JUNE 10, 2004</p> <p>Date Surveyed Signature & Seal of Professional Surveyor <i>Gary K. Edson</i> 6/14/04 04.11.0692 Certificate No. GARY. EDSON 12641</p>
---	---

SECTION 24, TOWNSHIP 21 SOUTH, RANGE 25 EAST, N.M.P.M.,
 EDDY COUNTY, NEW MEXICO



DIRECTIONS TO LOCATION

FROM THE INTERSECTION OF U.S. HWY #285 AND CO. RD. #407 (DOUGLAS FIR) TURN SOUTHWEST ON CO. RD. #407 AND GO 0.8 MILES, TURN LEFT (SOUTH) AND GO 0.9 MILES TO INTERSECTION. TURN RIGHT (WEST) AND GO 0.6 MILES TO PROPOSED ROAD SURVEY. THIS LOCATION IS APPROX. 620' NORTH.



PURE RESOURCES, L.P.

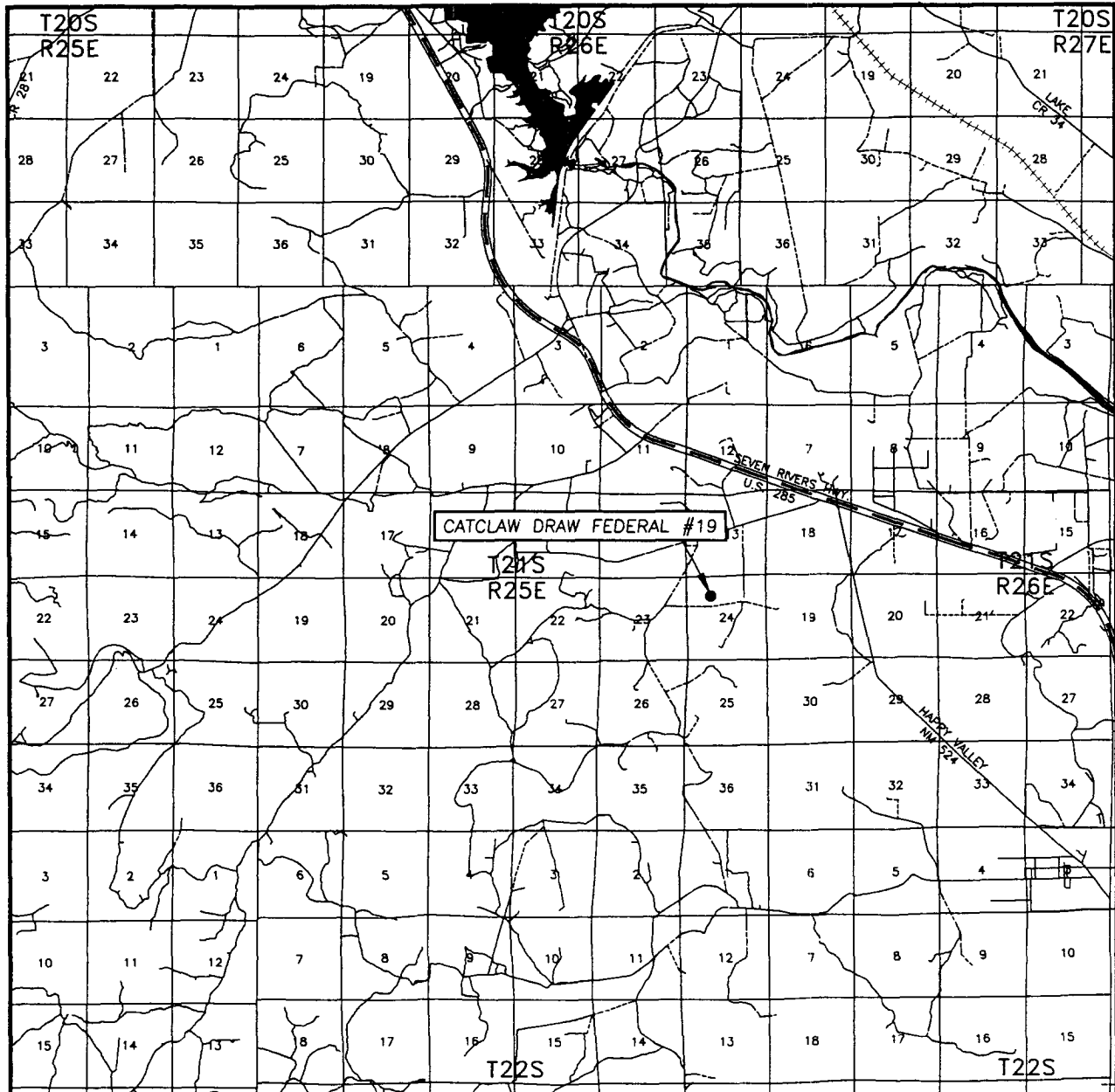
CATCLAW DRAW FEDERAL #19 WELL
 LOCATED 1117 FEET FROM THE NORTH LINE
 AND 1147 FEET FROM THE WEST LINE OF SECTION 24,
 TOWNSHIP 21 SOUTH, RANGE 25 EAST, N.M.P.M.,
 EDDY COUNTY, NEW MEXICO.

Survey Date: 06/10/04	Sheet 1 of 1 Sheets
W.O. Number: 04.11.0692	Dr By: J. RIVERO
Date: 06/14/04	Disk: CD#10
04110692	Scale: 1"=100'



PROVIDING SURVEYING SERVICES
 SINCE 1948
JOHN WEST SURVEYING COMPANY
 412 N. DAL PASO
 HOBBS, N.M. 88240
 (505) 383-3117

VICINITY MAP



SCALE: 1" = 2 MILES

SEC. 24 TWP. 21-S RGE. 25-E

SURVEY N.M.P.M.

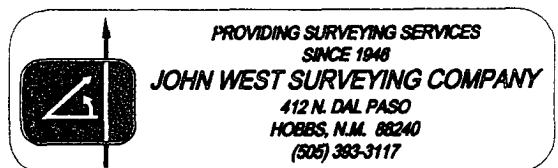
COUNTY EDDY

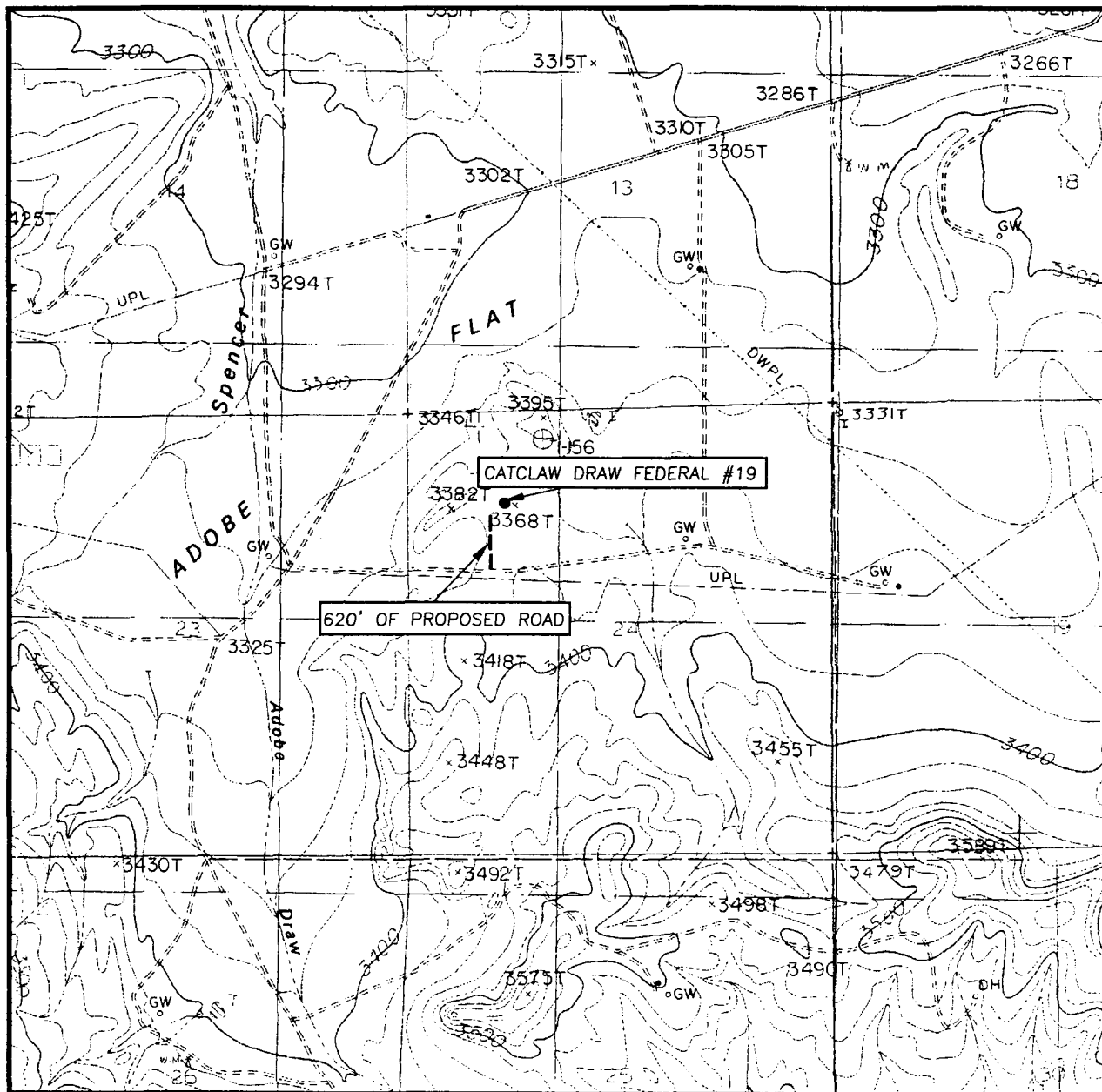
DESCRIPTION 1117' FNL & 1147' FWL

ELEVATION 3368'

OPERATOR PURE RESOURCES, L.P.

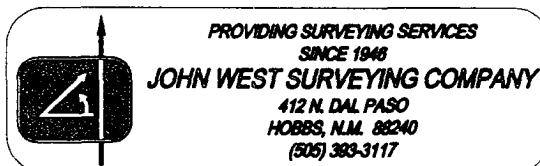
LEASE CATCLAW DRAW FEDERAL





CONTOUR INTERVAL:
CARLSBAD WEST, N.M. - 20'

U.S.G.S. TOPOGRAPHIC MAP
CARLSBAD WEST, N.M.



APPLICATION TO DRILL

PURE RESOURCES, L.P.
CATCLAW DRAW UNIT # 19
UNIT "D" SECTION 24
T21S-R25E EDDY CO. NM

In response to questions asked under Section II of Bulletin NTL-6 the following information on the above well is provided for your consideration.

1. Location: 1117' FNL & 1147' FWL SECTION 24 T21S-R25E EDDY CO. NM
2. Elevation above Sea Level: 3368'
3. Geologic name of surface formation: Quaternary Aeolian Deposits.
4. Drilling tools and associated equipment: Conventional rotary drilling rig using drilling mud as a circulating medium for solids removal from hole.
5. Proposed drilling depth: 10,600'
6. Estimated tops of geological markers:

Delaware	1591'	Strawn	9166'
Bone Spring	3966'	Atoka	9586'
Wolfcamp	7691'	Morrow	9966'
Penn	8626'	Barnett	10491'
7. Possible mineral bearing formations:

Wolfcamp	Gas	Atoka	Gas
Strawn	Gas	Morrow	Gas
8. Casing program:

Hole size	Interval	OD of casing	Weight	Thread	Collar	Grade
25"	0-40'	20"	NA	NA	NA	Conductor
17½"	0-350'	13 3/8"	48	8-R	ST&C	H-40
12½"	0-1750'	9 5/8"	36	8-R	ST&C	J-55
8 3/4"	0-10,600'	5½"	17	8-R	LT&C	N-80

APPLICATION TO DRILL

PURE RESOURCES, L.P.
CATCLAW DRAW UNIT # 19
UNIT "D" SECTION 24
T21S-R25E EDDY CO. NM

9. CEMENTING & CASING SETTING DEPTH:

20"	Conductor	Set 40' of 20" conductor and cement to surface with Redi-mix.
13 3/8"	Surface	Set 350' of 13 3/8" 48# H-40 ST&C casing. Cement with 350 Sx. of Class "C" cement + additives, circulate cement to surface.
9 5/8"	Intermediate	Set 1750' of 9 5/8" 36# J-55 ST&C casing. Cement with 500 Sx. of 35/65 POZ + 1/4# Flocele/Sx. + 6% Bentonite, tail in with 200 Sx. of Class "C" cement + 2% CaCl, circulate cement to surface.
5 1/2"	Production	Set 10,600' of 5 1/2" 17# P-110 LT&C casing. Cement with 1500 Sx. of 50/50/10 Class "H" POZ + additives, tail in with 500 Sx. of Class "H" 50/50/10 + additives, estimate top of cement 2300' from surface.

10. PRESSURE CONTROL EQUIPMENT: Exhibit "E" shows a Series 1500 5000 PSI working pressure B.O.P. consisting of a annular bag type preventor with middle blind rams, and bottom pipe rams. This B.O.P. will be nipped up on the 13 3/8" casing and tested to API specifications. The B.O.P. will be operated at least once each 24 hour period, and blind rams will be worked when drill pipe is out of hole. Exhibit "E-1" shows a hydraulically operated closing unit with a 3" 5000 PSI choke manifold with dual adjustable chokes. No abnormal pressures are expected in this well as knowledge of pressures present in this area is well known.

11. PROPOSED MUD CIRCULATING SYSTEM"

DEPTH	MUD WT.	VISC.	FLUID LOSS	TYPE MUD SYSTEM
40-350'	8.4-8.7	29-34	NC	Fresh water add paper to control seepage.
350-1750'	8.4-8.8	28-32	NC	Fresh water use paper to control seepage and use high viscosity sweeps to clean hole.
1750-10,000'	8.4-9.0	28-40		Same as above.
10,000-10,600	8.8-9.2	32-38	6-8 cc or less	Cut brine use a Dris-pac system to control water loss & use high viscosity

Sufficient mud materials will be kept on location at all times in order to combat lost circulation or unexpected kicks. In order to run DST's, logs, and casing viscosity and water loss may have to be adjusted to meet these needs.

APPLICATION TO DRILL

PURE RESOURCES, L.P.
CATCLAW DRAW UNIT # 19
UNIT "D" SECTION 24
T21S-R25E EDDY CO. NM

12. LOGGING, CORING, AND TESTING PROGRAM:

- A. Open hole logs: Run Dual Induction logs, CNL, LDT, Gamma Ray, Caliper from TD bsck to 1750'. or 9 5/8" casing shoe.
- B. Run Gamma Ray, CNL from 9 5/8" casing shoe back to surface.
- C. No cores or DST's are planned at this time.

13. POTENTIAL HAZARDS:

No abnormal pressures or temperatures are expected. There is no known presence of H²S in this area. If H²S is encountered the operator will comply with the provisions of Onshore Oil and Gas Order No. 6. No lost circulation is expected to occur. All personnel will be familiar with all aspects of safe operation of equipment being used to drill this well. Estimated BHP 6500 PSI, and Estimated BHT 190°.

14. ANTICIPATED STARTING DATE AND DURATION OF OPERATION:

Road and location construction will begin after the BLM has approved the APD. Anticipated spud date will be as soon after BLM approval and as soon as a rig will be available. Move in operation and drilling is expected to take 27 days. If production casing is run then an additional 30 days will be needed to complete well and construct surface facilities and/or lay flowlines in order to place well on production.

15. OTHER FACETS OF OPERATIONS:

After running casing, cased hole Gamma Ray, Neutron Collar logs will be run from TD back to all possible productive zones. The MORROW formation will be perforated and stimulated in order to establish production. The well will be swab tested and potentialied as a gas well.

HYDROGEN SULFIDE DRILLING OPERATIONS PLAN

1. All Company and Contract personnel admitted on location must be trained by a qualified H₂S safety instructor to the following:
 - A. Characteristics of H₂S
 - B. Physical effects and hazards
 - C. Proper use of safety equipment and life support systems.
 - D. Principle and operation of H₂S detectors, warning system and briefing areas.
 - E. Evacuation procedure, routes and first aid.
 - F. Proper use of 30 minute pressure demand air pack.
2. H₂S Detection and Alarm Systems
 - A. H₂S detectors and audio alarm system to be located at bell nipple, end of bloop line (mud pit) and on derrick floor or doghouse.
3. Windsock and/or wind streamers
 - A. Windsock at mudpit area should be high enough to be visible.
 - B. Windsock at briefing area should be high enough to be visible.
 - C. There should be a windsock at entrance to location.
4. Condition Flags and Signs
 - A. Warning sign on access road to location.
 - B. Flags to be displayed on sign at entrance to location. Green flag, normal safe condition. Yellow flag indicates potential pressure and danger. Red flag, danger, H₂S present in dangerous concentration. Only emergency personnel admitted to location.
5. Well control equipment
 - A. See exhibit "E" & "E-1"
6. Communication
 - A. While working under masks chalkboards will be used for communication.
 - B. Hand signals will be used where chalk board is inappropriate.
 - C. Two way radio will be used to communicate off location in case of emergency help is required. In most cases cellular telephones will be available at most drilling foreman's trailer or living quarters.
7. Drillstem Testing
 - A. Exhausts will be watered.
 - B. Flare line will be equipped with an electric ignitor or a propane pilot light in case gas reaches the surface.
 - C. If the location is near to a dwelling a closed DST will be performed.

HYDROGEN SULFIDE DRILLING OPERATIONS PLAN

8. Drilling contractor supervisor will be required to be familiar with the effects H_2S has on tubular goods and other mechanical equipment.
9. If H_2S is encountered, mud system will be altered if necessary to maintain control of formation. A mud gas separator will be brought into service along with H_2S scavengers if necessary.

SURFACE USE PLAN

PURE RESOURCES, L.P.
CATCLAW DRAW UNIT # 19
UNIT "D" SECTION 24
T21S-R25E EDDY CO. NM

1. EXISTING ROADS & PROPOSED ROADS: Area maps; Exhibit "B" is a reproduction of a County General Hi-way Map. Exhibit "C" is a reproduction of a USGS Topographic Map, showing existing and proposed roads. All existing roads will be maintained in a condition equal to or better than current conditions. Any new roads will be constructed to BLM specifications.
 - A. Exhibit "A" shows the proposed well site as staked.
 - B. From Carlsbad New Mexico take U.S. Hi-way 285 NORTH for approximately 9 miles to CR # 407 (Douglas Fir Road), turn Left go 1.6 miles bear Left go .9 miles turn Left go .5 miles turn Left (North) go 600±' to location.
 - C. Exhibit "C" will show route of Flowline to gas sales line.
2. PLANNED ACCESS ROADS: Approximately 600' of new road will be consturcted.
 - A. The access roads will be crowned and ditched to a 12' wide travel surface with a 40' Right-of-Way.
 - B. Gradient of all roads will be less than 5.00%.
 - C. If turn-outs are necessary they will be constructed.
 - D. If needed roads will be surfaced with a mimimum of 4" of caliche. This material will be obtained from a local source.
 - E. Center-line for new roads will be flagged. Earth-work will be will be done as field conditions require.
 - F. Culverts will be placed in the access road if they are necessary. The roads will be constructed to utilaze low water crossings for drainage as required by topography.
3. LOCATIONS OF EXISTING WELLS IN A ONE MILE RADIUS. EXHIBIT "A-1"
 - A. Water wells - One 1.5 miles Northwest of location.
 - B. Disposal wells - None known
 - C. Drilling wells - None known
 - D. Producing wells - As shown on Exhibit "A-1"
 - E. Abandoned wells - As shown on Exhibit "A-1"

SURFACE USE PLAN

PURE RESOURCES, L.P.
CATCLAW DRAW UNIT # 19
UNIT "D" SECTION 24
T21S-R25E EDDY CO. NM

4. If on completion this well is a producer the operator will lay pipelines and construct powerlines along existing road R-O-W's or other existing R-O-W's. Possible routes of pipelines, flowlines and powerlines are shown on Exhibit "C".

5. LOCATION AND TYPE OF WATER SUPPLY:

Water will be purchased locally from a commercial source and trucked over the access roads or piped to location in flexible lines laid on top of the ground.

6. SOURCE OF CONSTRUCTION MATERIAL:

If possible construction material will be obtained from the excavation of drill site, if additional material is needed it will be obtained from a local source and transported over the access roads as shown on Exhibit "C".

7. METHODS OF HANDLING WASTE MATERIAL:

- A. Drill cuttings will be disposed of in the reserve pits.
- B. All trash, junk and other waste material will be contained in trash cages or trash bins to prevent scattering. When the job is completed all contents will be removed and disposed of in a approved sanitary land fill.
- C. Salts remaining after completion of well will be picked up by the supplier, including broken sacks.
- D. Waste water from living quarters will be drained into holes with a minium of 10'. These holes will be covered during drilling and will be back filled when the well is completed. A Porto-John will be provided for the rig crews. This equipment will be properly maintained during the drilling and completion operations and will be removed when all operations are complete.
- E. Remaining drilling fluids will be allowed to evaporate in the reserve pits until the pits are dry enough to be broken out for furthred drying. If the drilling fluids do not evaporate in a reasonable time they will be hauled off by transports to a state approve disposal site. Later pits will be broken out to speed drying. Water produced during completion will be put in reserve pits. Oil and condensate produced will be put in storage tanks and sold.

8. ANCILLARY FACILITIES:

- A. No camps or air strips will be constructed on location.

SURFACE USE PLAN

PURE RESOURCES, L.P.
CATCLAW DRAW UNIT # 19
UNIT "D" SECTION 24
T21S-R25E EDDY CO. NM

9. WELL SITE LAYOUT

- A. Exhibit "D" shows the proposed well site layout.
- B. This exhibit indicated proposed location of reserve and sump pits and living facilities.
- C. Mud pits in the active circulating system will be steel pits & the reserve pit is proposed to be unlined unless subsurface condition encountered during pit construction indicate that lining is needed for lateral containment of fluids.
- D. If needed, the reserve pit is to be lined with polyethelene. The pit liner will be 6 mils thick. Pit liner will extend a minimum 2'00" over the reserve pits dikes where the liner will be anchored down.
- E. The reserve pit will be fenced on three sides with four strands of barbed wire during drilling and completion phases. The fourth side will be fenced after all drilling operations have ceased. If the well is a producer, the reserve pit fence will be torn down. The reserve pit and those areas of the location not essential to production facilities will be reclaimed and seeded per BLM requirements.

10. PLANS FOR RESTORATION OF SURFACE

Rehabilitation of the location and reserve pit will start in a timely manner after all drilling operations cease. The type of reclamation will depend on whether the well is a producer or a dry hole.

However, in either event, the reserve pit will be allowed to dry properly, and fluid removed and disposed of in accordance with Article 7.B as previously noted. The pit area will then be leveled and contoured to conform to the original and surrounding area. Drainage systems, if any, will be reshaped to the original configuration with provisions made to alleviate erosion. These may need to be modified in certain circumstances to prevent inundation of the location's pad and surface facilities. After the area has been shaped and contoured, topsoil from the spoil pile will be placed over the disturbed area to the extent possible. Revegetation procedures will comply with BLM standards.

If the well is a dry hole, the pad and road area will be contoured to match the existing terrain. Topsoil will be spread to the extent possible. Revegetation will comply with BLM standards.

Should the well be a producer, the previously noted procedures will apply to those areas which are not required for production facilities.

SURFACE USE PLAN

PURE RESOURCES, L.P.
CATCLAW DRAW UNIT # 19
UNIT "D" SECTION 24
T21S-R25E EDDY CO. NM

11. OTHER INFORMATION:

- A. Topography consists of shallow valley drainages, that drains into Adobe Flat then Easterly into Hackberry Draw. Vegetation consists of Gamma Grass, Bunch Grass, Snakeweed, Barrel Cactus, Scattered Mesquite and Creosote.
- B. The surface is owned by Lonnie & Paula Evans 35 Queens Highway, Carlsbad, New Mexico 88220. Phone 505-457-2368. The minerals are owned by The U.S Department of Interior and is administered by The Bureau of Land Management.
- C. An archaeological survey has been completed and is on file with the Carlsbad Bureau Of Land Management Field Office.
- D. There are no domestic dwellings located within one mile of the location.

12. OPERATORS REPRESENTATIVE:

Before construction:

TIERRA EXPLORATION, INC.
P.O. BOX 2188
HOBBS, NEW MEXICO 88241
JOE T. JANICA
OFFICE PHONE 505-391-8503

During and after construction:

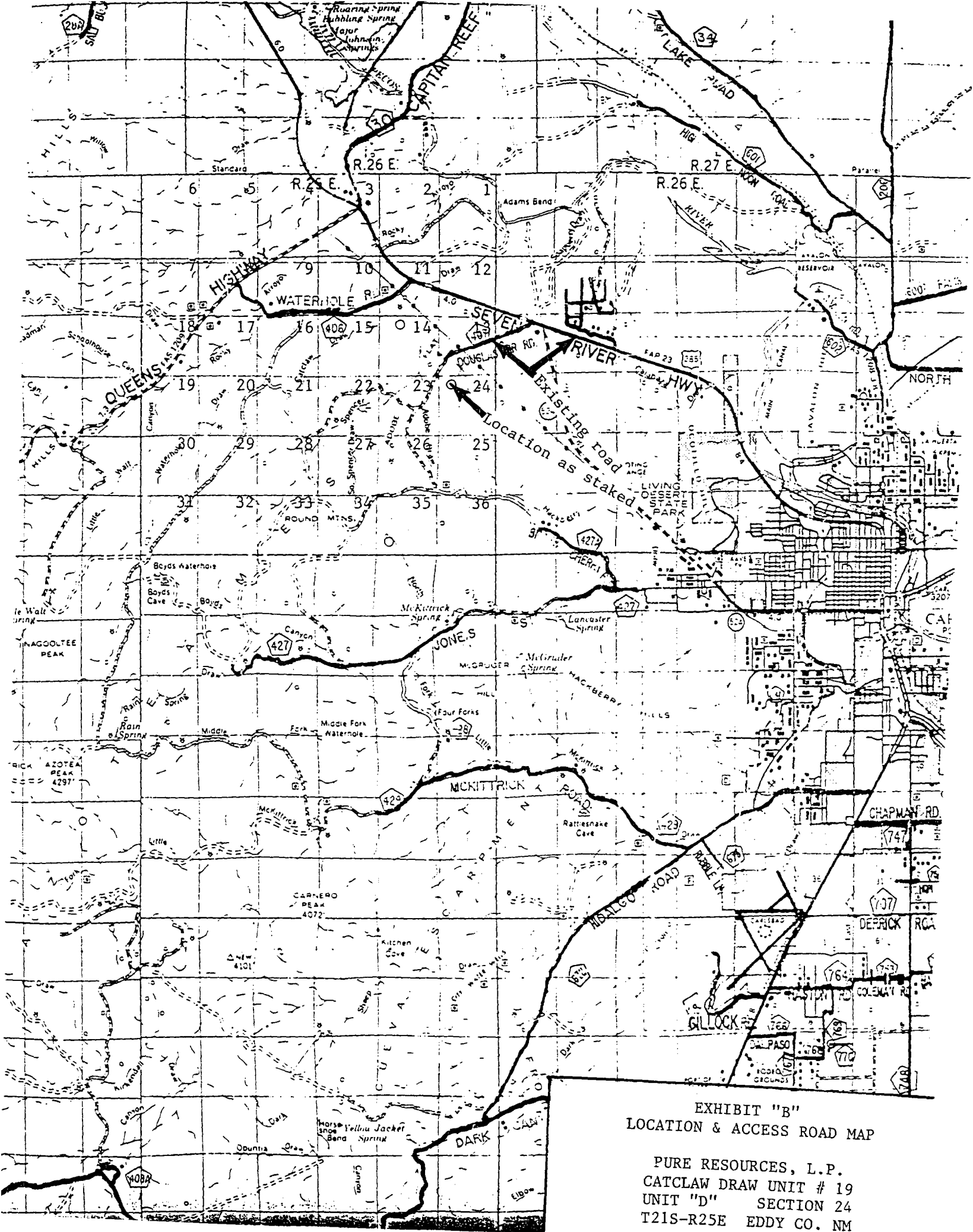
PURE RESOURCES, L.P.
500 WEST ILLINOIS
MIDLAND, TEXAS 79701
KEN KRAWIETZ
OFFICE PHONE 432-498-2655

13. CERTIFICATION: I hereby certify that I or persons under my direct supervision have inspected the proposed drill site and access route, that I am familiar with the conditions which currently exist, that the statements made in this plan are to the best of my knowledge, are true and correct, and that the work associated with the operations proposed herein will be performed by PURE RESOURCES, L.P., its contractors/subcontractors is in the conformity with this plan and the terms and conditions under which it is approved. This statement is subject to the provision of U.S.C. 1001 for the filing of a false statement.

NAME : Joe T. Janica

DATE : 07/25/04

TITLE : Agent



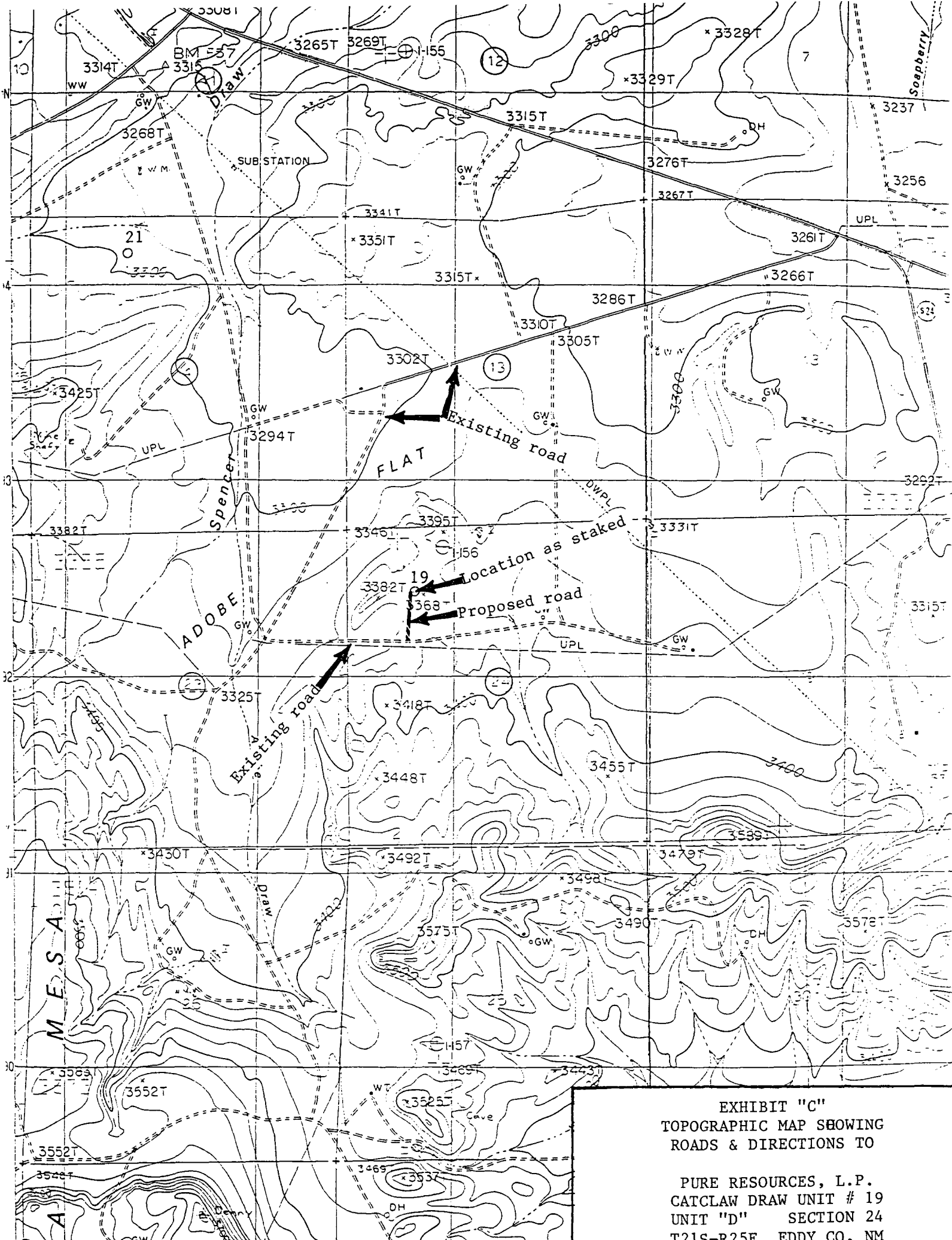


EXHIBIT "C"
TOPOGRAPHIC MAP SHOWING
ROADS & DIRECTIONS TO

PURE RESOURCES, L.P.
CATCLAW DRAW UNIT # 19
UNIT "D" SECTION 24
T21S-R25E EDDY CO. NM

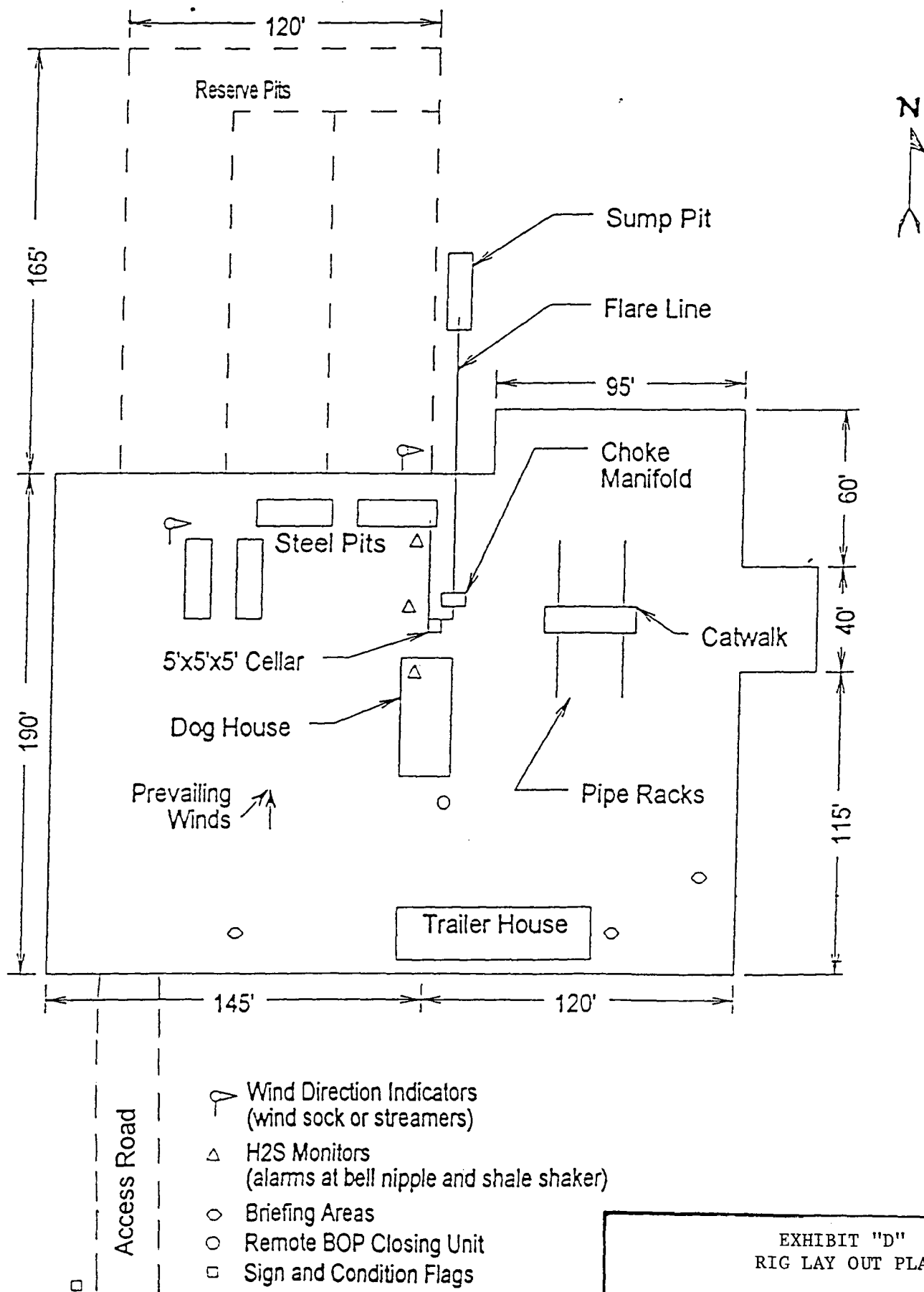
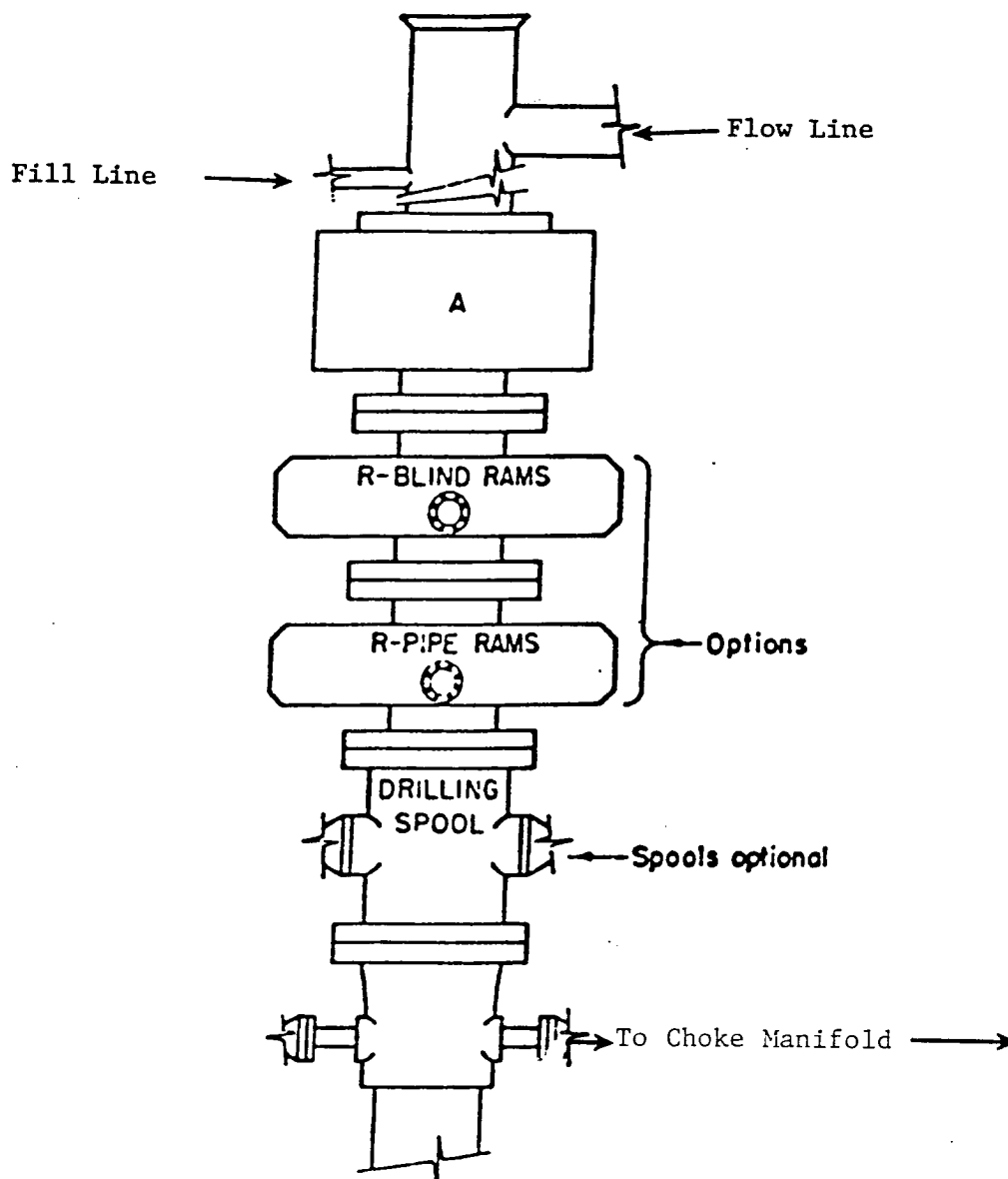


EXHIBIT "D"
RIG LAY OUT PLAT

PURE RESOURCES, L.P.
CATCLAW DRAW UNIT # 19
UNIT "D" SECTION 24
T21S-R25E EDDY CO. NM



ARRANGEMENT SRRA

1500 Series
5000# Working Pressure

EXHIBIT "E"
SKETCH OF B.O.P. TO BE USED ON

PURE RESOURCES, L.P.
CATCLAW DRAW UNIT # 19
UNIT "D" SECTION 24
T21S-R25E EDDY CO. NM

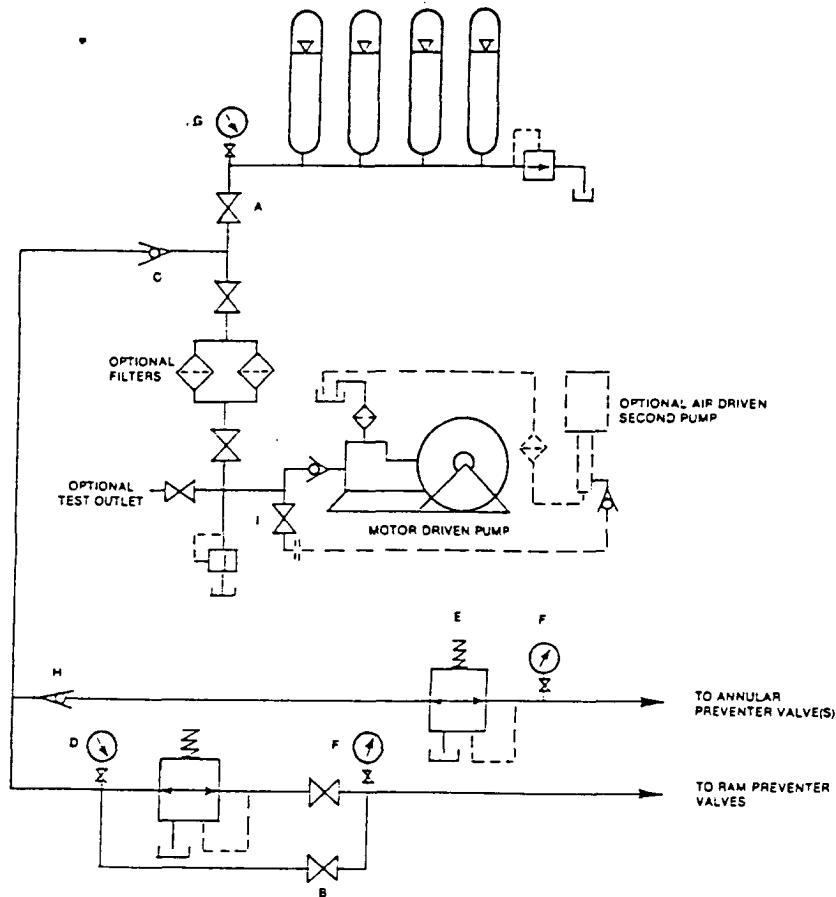


FIGURE K6-1. The schematic sketch of an accumulator system shows required and optional components.

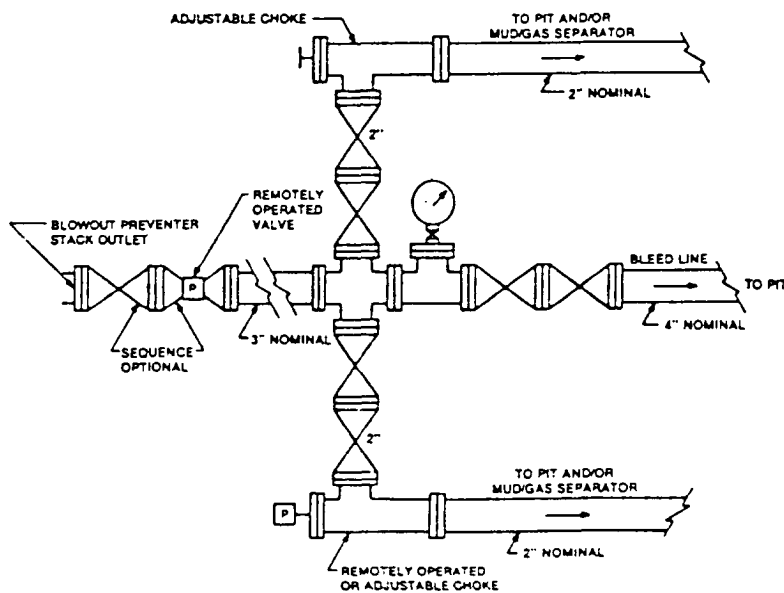
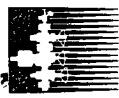


FIGURE K4-2. Typical choke manifold assembly for 5M rated working pressure service — surface installation.

EXHIBIT "E-1"
CHOKE MANIFOLD & CLOSING UNIT

PURE RESOURCES, L.P.
CATCLAW DRAW UNIT # 19
UNIT "D" SECTION 24
T21S-R25E EDDY CO. NM



DICKESON
Oil and Gas Properties

RECEIVED

2004 NOV 12 PM 1 41

CARLSBAD FIELD OFFICE

November 10, 2004

P.O. Box 10152
Midland, Texas 79702
432-682-4002
432-684-4741 Fax

Ms. Linda Denniston
Bureau of Land Management
620 E. Greene
Carlsbad, NM 88220

RE: Surface Use Agreement - Pure Resources, L.P.
Catclaw Draw Federal #19 Well
1,117' FNL & 1,147' FWL Section 24, T-21-S, R-25-E, N.M.P.M.
Eddy County, New Mexico

Dear Ms. Denniston:

Pursuant to our recent telephone conversation, please be advised that Pure Resources, L.P. has made an agreement with the surface owner, Truitt Ranch, for the purposes of the drilling and operation of the captioned well. Should you need to confirm this, you may contact Ms. Paula Evans with Truitt Ranch at 505-457-2368.

Should you have any questions, please advise.

Yours very truly,

Kenneth C. Dickeson
Consulting Landman

tlblm