

Submit To: Appropriate District Office  
 State Lease - 6 copies  
 Fee Lease - 5 copies  
 District I  
 1625 N. French Dr., Hobbs, NM 88240  
 District II  
 1301 W. Grand Avenue, Artesia, NM 88210  
 District III  
 1000 Rio Brazos Rd., Aztec, NM 87410  
 District IV  
 1220 S. St. Francis Dr., Santa Fe, NM 87505

**State of New Mexico**  
**Energy, Minerals and Natural Resources**  
  
**Oil Conservation Division**  
**1220 South St. Francis Dr.**  
**Santa Fe, NM 87505**

**Form C-105**  
 Revised June 10, 2003

WELL API NO.  
 30-015-33556

5. Indicate Type of Lease  
 STATE  FEE

State Oil & Gas Lease No.

**WELL COMPLETION OR RECOMPLETION REPORT AND LOG**

1a. Type of Well:  
 OIL WELL  GAS WELL  DRY  OTHER \_\_\_\_\_

b. Type of Completion:  
 NEW  WORK  DEEPEN  PLUG  DIFF.  
 WELL OVER BACK RESVR.  OTHER

7. Lease Name or Unit Agreement Name  
 Big Chief Fee  
 RECEIVED  
 DEC 21 2004  
 OOB-ARTESIA

2. Name of Operator  
 Nadel and Gussman Permian, L.L.C.

8. Well No.  
 6

3. Address of Operator  
 601 N. Marienfeld, Suite 508, Midland, TX 79701

9. Pool name or Wildcat  
 Dublin Ranch; Morrow (76140)

4. Well Location  
 Unit Letter F : 1980 Feet From The North Line and 1980 Feet From The West Line  
 Section 21 Township 22S Range 28E NMPM Eddy County

10. Date Spudded 8/26/04 11. Date T.D. Reached 10/17/04 12. Date Compl. (Ready to Prod.) 11/10/04  
 13. Elevations (DF& RKB, RT, GR, etc.) 3068' GL; KB 19' 14. Elev. Casinghead 3068' GL

15. Total Depth 12,600' 16. Plug Back T.D. 12,390' 17. If Multiple Compl. How Many Zones? \_\_\_\_\_  
 18. Intervals Drilled By Rotary Tools Cable Tools  
 100%

19. Producing Interval(s), of this completion - Top, Bottom, Name 12,271 - 12,285 Morrow 20. Was Directional Survey Made NO

21. Type Electric and Other Logs Run CNDL, DLL 22. Was Well Cored NO

**23. CASING RECORD (Report all strings set in well)**

| CASING SIZE | WEIGHT LB./FT. | DEPTH SET | HOLE SIZE | CEMENTING RECORD                    | AMOUNT PULLED |
|-------------|----------------|-----------|-----------|-------------------------------------|---------------|
| 13 3/8"     | 48# H-40       | 320'      | 17 1/2"   | 400 sxs 120 Circ.                   |               |
| 9 5/8"      | 40# N-80 P110  | 6,115'    | 12 1/4"   | 2400 sxs, 300 Circ.                 |               |
| 5 1/2"      | 17# P110 LTC   | 12,600'   | 7 7/8"    | 800 sxs Circ. 1 <sup>st</sup> Stage |               |
|             |                |           |           | 600 sxs Circ. 2 <sup>nd</sup> Stage |               |
|             |                |           |           | TOC @ 1510 by CBL                   |               |

**24. LINER RECORD**

| SIZE | TOP | BOTTOM | SACKS CEMENT | SCREEN | SIZE    | DEPTH SET | PACKER SET |
|------|-----|--------|--------------|--------|---------|-----------|------------|
|      |     |        |              |        | 2- 7/8" | 12,233'   | 12,164'    |

**25. TUBING RECORD**

| 26. Perforation record (interval, size, and number) |                               | 27. ACID, SHOT, FRACTURE, CEMENT, SQUEEZE, ETC. |                               |
|---|-------------------------------|---|-------------------------------|
| DEPTH INTERVAL                                      | AMOUNT AND KIND MATERIAL USED | DEPTH INTERVAL                                  | AMOUNT AND KIND MATERIAL USED |
| 12,271' - 12,285' 6 SPF, 60 holes<br>CIBP @ 12,390' |                               | 12,271' - 12,285'                               | None, TCP                     |
| 12,400' - 12,420' 6 SPF, 120 holes                  |                               | 12,400' - 12,420'                               | 4000 gals 7.5% HCL 240 RCNBS  |

**28. PRODUCTION**

|                                   |                      |  |                        |                |   |                             |                            |
|-----------------------------------|----------------------|--|------------------------|----------------|---|-----------------------------|----------------------------|
| Date First Production<br>11/20/04 |                      | Production Method (Flowing, gas lift, pumping - Size and type pump)<br>Flowing |                        |                | Well Status (Prod. or Shut-in)<br>Producing |                             |                            |
| Date of Test<br>11/21/04          | Hours Tested<br>24   | Choke Size<br>9/64   | Prod'n For Test Period | Oil - Bbl<br>1 | Gas - MCF<br>955                            | Water - Bbl.<br>1           | Gas - Oil Ratio<br>955 - 1 |
| Flow Tubing Press.<br>3625        | Casing Pressure<br>0 | Calculated 24-Hour Rate  | Oil - Bbl.             | Gas - MCF      | Water - Bbl.                                | Oil Gravity - API - (Corr.) |                            |

29. Disposition of Gas (Sold, used for fuel, vented, etc.)  
 Sold Test Witnessed By  
 Lee Ledbetter

30. List Attachments  
 Wellbore Schematic, Deviation Report

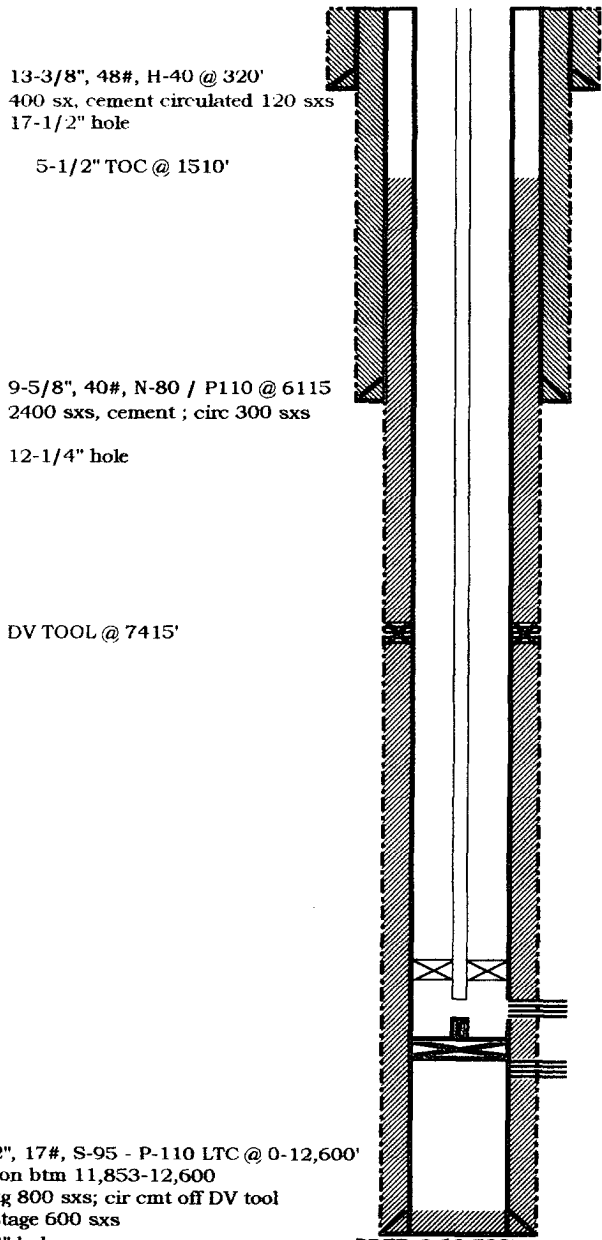
31. I hereby certify that the information shown on both sides of this form as true and complete to the best of my knowledge and belief

Signature Kem. McCreedy Printed Name Kem McCreedy Title Operations Engineer Date 12/16/04

**Big Chief #6**  
**1980' FNL, 1980' FWL Sec 21, 22S, 28E, Eddy County, NM**  
**API # 30 - 015 - 33556-0**

Elev: 3068', KB: 19' AGI

Current



13-3/8", 48#, H-40 @ 320'  
 400 sxs, cement circulated 120 sxs  
 17-1/2" hole

5-1/2" TOC @ 1510'

9-5/8", 40#, N-80 / P110 @ 6115  
 2400 sxs, cement ; circ 300 sxs

12-1/4" hole

DV TOOL @ 7415'

5-1/2", 17#, S-95 - P-110 LTC @ 0-12,600'  
 S-95 on btm 11,853-12,600  
 1st stg 800 sxs; cir cmt off DV tool  
 2nd stage 600 sxs  
 7-7/8" hole

PBTD @ 12,500'  
 TD @ 12,600' MD 12,597' SLM

**Tubing Details**  
 1 jt 2 7/8 6.5 ppf EUE L-80 TBG  
 1 2' 2-7/8" L-80 6.5 ppf EUE sub  
 402 jts 2-7/8 6.5 ppf EUE tbg  
 1 -6' MARKER JOINT  
 2 jts 2 7/8 6.5 ppf EUE L-80 TBG  
 2.25 On /Off tool F profile  
 ARROW SET PACKER @ 12,164'  
 1 jt 2 7/8 6.5 ppf EUE L-80 TBG  
 2.25 R profile nipple  
 1 jt 2 7/8 6.5 ppf EUE L-80 TBG  
 EOT @ 12,233'

**Morrow Perfs**  
 12,271' - 12,285' 6 spf 60 deg phasing

Fish in hole above CIBP  
 Fish- mech firing head, blank gun, 14' of perf

CIBP @ 12,390'  
 12,400' - 12420'  
 6 spf 120 holes

# INSTRUCTIONS

This form is to be filed with the appropriate District Office of the Division not later than 20 days after the completion of any newly-drilled or deepened well. It shall be accompanied by one copy of all electrical and radio-activity logs run on the well and a summary of all special tests conducted, including drill stem tests. All depths reported shall be measured depths. In the case of directionally drilled wells, true vertical depths shall also be reported. For multiple completions, items 25 through 29 shall be reported for each zone. The form is to be filed in quintuplicate except on state land, where six copies are required. See Rule 1105.

## INDICATE FORMATION TOPS IN CONFORMANCE WITH GEOGRAPHICAL SECTION OF STATE

| Southeastern New Mexico |                                     | Northwestern New Mexico |                  |
|-------------------------|-------------------------------------|-------------------------|------------------|
| T. Anhy                 | T. Canyon 10,704'                   | T. Ojo Alamo            | T. Penn. "B"     |
| T. Salt                 | T. Strawn 10,866'                   | T. Kirtland-Fruitland   | T. Penn. "C"     |
| B. Salt                 | T. Atoka L. 11,637'                 | T. Pictured Cliffs      | T. Penn. "D"     |
| T. Yates                | T. Atoka C. 11,255'                 | T. Cliff House          | T. Leadville     |
| T. 7 Rivers             | T. Devonian                         | T. Menefee              | T. Madison       |
| T. Queen                | L. Morrow 12,268'                   | T. Point Lookout        | T. Elbert        |
| T. Grayburg             | T. Montoya                          | T. Mancos               | T. McCracken     |
| T. San Andres           | T. Simpson                          | T. Gallup               | T. Ignacio Otzte |
| T. Glorieta             | T. Canyon 3,261'                    | Base Greenhorn          | T. Granite       |
| T. Paddock              | T. Ellenburger                      | T. Dakota               | T.               |
| T. Blinebry             | T. Gr. Wash                         | T. Morrison             | T.               |
| T. Tubb                 | T. Delaware Sand 2,547'             | T. Todilto              | T.               |
| T. Drinkard             | T. Bone Springs 6,000'              | T. Entrada              | T.               |
| T. Abo                  | 2 <sup>nd</sup> Bone Springs 7,781' | T. Wingate              | T.               |
| T. Wolfcamp 9512'       | 3 <sup>rd</sup> Bone Springs 9,026' | T. Chinle               | T.               |
| T. Penn                 | T. Morrow 11,364'                   | T. Permian              | T.               |
| T. Cisco (Bough C)      | M. Clastics 11,875'                 | T. Penn "A"             | T.               |

### OIL OR GAS SANDS OR ZONES

No. 1, from ..... to .....  
 No. 2, from ..... to .....  
 No. 3, from ..... to .....  
 No. 4, from ..... to .....

### IMPORTANT WATER SANDS

Include data on rate of water inflow and elevation to which water rose in hole.

No. 1, from ..... to ..... feet .....  
 No. 2, from ..... to ..... feet .....  
 No. 3, from ..... to ..... feet .....

## LITHOLOGY RECORD (Attach additional sheet if necessary)

| From   | To     | Thickness<br>In Feet | Lithology      | From | To | Thickness<br>In Feet | Lithology |
|--------|--------|----------------------|----------------|------|----|----------------------|-----------|
| 3000'  | 6040'  | 3040'                | LM, SD, SH     |      |    |                      |           |
| 6040'  | 9040'  | 3000'                | LM, SH         |      |    |                      |           |
| 9040'  | 9520'  | 480'                 | LM, SD, SH     |      |    |                      |           |
| 9520'  | 11290' | 1770'                | LM, SH         |      |    |                      |           |
| 11290' | 12600' | 1310'                | LM, SD, SH, CH |      |    |                      |           |


OCT 18 2004

OPERATOR: NADEL & GUSSMAN PERMIAN, LLC  
WELL/LEASE: BIG CHIEF #6  
COUNTY: EDDY, NM

511-5044

STATE OF NEW MEXICO  
DEVIATION REPORT

|       |       |       |       |        |       |
|-------|-------|-------|-------|--------|-------|
| 170   | 3/4   | 3,754 | 1/2   | 9,117  | 1     |
| 293   | 1/2   | 3,849 | 1/2   | 9,272  | 1 1/2 |
| 520   | 1/2   | 3,944 | 1/2   | 9,339  | 2     |
| 769   | 1/2   | 4,038 | 1/2   | 9,402  | 2     |
| 1,022 | 1/2   | 4,133 | 1/2   | 9,465  | 2     |
| 1,337 | 1/2   | 4,269 | 1/2   | 9,497  | 1 1/4 |
| 1,652 | 1     | 4,363 | 1/2   | 9,591  | 1     |
| 1,745 | 1     | 4,385 | 1     | 9,902  | 1     |
| 1,841 | 3 1/2 | 4,479 | 1/2   | 10,030 | 1     |
| 1,859 | 3 1/2 | 4,710 | 1/2   | 10,250 | 1     |
| 1,873 | 3 1/2 | 4,794 | 1/2   | 10,597 | 1     |
| 1,904 | 3     | 4,984 | 1     | 10,944 | 1     |
| 1,936 | 3     | 5,151 | 1     | 11,196 | 1     |
| 2,188 | 3 1/4 | 5,330 | 1     | 11,415 | 1/2   |
| 2,314 | 4     | 5,530 | 1     | 11,508 | 1     |
| 2,346 | 3 3/4 | 5,709 | 1/2   | 11,634 | 1/2   |
| 2,375 | 3 1/2 | 5,908 | 1/2   | 11,851 | 1     |
| 2,406 | 3 1/4 | 6,091 | 3/4   | 11,931 | 1     |
| 2,438 | 3 1/4 | 6,095 | 1/2   | 12,118 | 1/2   |
| 2,472 | 3     | 6,350 | 1/2   | 12,321 | 1/2   |
| 2,501 | 3 1/4 | 6,602 | 1/2   | 12,542 | 1     |
| 2,537 | 3     | 6,830 | 1/2   | 12,600 | 1     |
| 2,569 | 1 3/4 | 7,230 | 1     |        |       |
| 2,601 | 1 1/2 | 7,491 | 1     |        |       |
| 2,632 | 2     | 7,506 | 3/4   |        |       |
| 3,039 | 1/2   | 7,860 | 1     |        |       |
| 3,134 | 1/2   | 8,080 | 1     |        |       |
| 3,260 | 1/2   | 8,384 | 1     |        |       |
| 3,386 | 1/2   | 8,645 | 1     |        |       |
| 3,443 | 1/2   | 8,951 | 2     |        |       |
| 3,566 | 1/2   | 8,982 | 1 1/2 |        |       |
| 3,660 | 1/2   | 9,055 | 1 1/2 |        |       |

By: 

STATE OF TEXAS  
COUNTY OF MIDLAND

The foregoing instrument was acknowledged before me on October 15th, 2004, by Steve Moore on behalf of Patterson-UTI Drilling Company LP, LLLP.

  
Notary Public for Midland County, Texas

My Commission Expires: 8/23/2007

