

marbob
energy corporation

May 12, 2003

Oil Conservation Division
811 South First Street
Artesia, New Mexico 88210

Attention: Mr. Tim Gum

RE: Unorthodox Well Location

Dear Mr. Gum:

Marbob Energy Corporation respectfully requests an administrative approval of the following unorthodox location pursuant to Order No. R-7900-B:

30-015-32782
Burch Keely Unit #810

1345 feet from the South line
1315 feet from the West line
Section 18, Township 17 South,
Range 30 East
Eddy County, New Mexico

30-015-32783
Burch Keely Unit #926

2615 feet from the South line
1650 feet from the West line
Section 18, Township 17 South,
Range 30 East
Eddy County, New Mexico

30-015-28090
Burch Keely Unit #811

1310 feet from the South line
2545 feet from the West line
Section 18, Township 17 South,
Range 30 East
Eddy County, New Mexico

30-015-32786
Burch Keely Unit #930

1320 feet from the South line
25 feet from the West line
Section 18, Township 17 South,
Range 30 East
Eddy County, New Mexico



These wells may be completed in the upper 500 feet of the Yeso, the Grayburg, the San Andres, and or the Seven Rivers Formation in the Grayburg Jackson Pool.

Attached to the applications are the following Exhibits:

- A. Oil Conservation Division Form C-102 with proration unit outlined (Exhibit A).

B. A plat which shows all other wells within the quarter-quarter section and Burch Keely boundary (Exhibit B).

Well number 810 will be 3935 feet from the closest unit boundary and 25 feet from the interior quarter quarter line; well number 811 will be 2735 feet from the closest unit boundary and 10 feet from the interior quarter quarter line; well number 926 will be 2665 feet from the closest unit boundary and 25 feet from the interior quarter quarter line; well number 930 will be 3960 feet from the closest unit boundary and 25 feet from the interior quarter quarter line.

If these unorthodox locations meet with your approval, please sign below and return to our office. Thank you for your help.

Sincerely,

Misti McLurg

Misti McLurg
Land Department



/mm
Attachments

Approved this 15th day of May, 2003.

By:

Bryan ...
Title:
Oil Conservation Division
Artesia Office

Bryan ...
Title:
Oil Conservation Division
Artesia Office

MAR 04 2003

DISTRICT I
P.O. Box 1980, Hobbs, NM 88241-1980

State of New Mexico
Energy, Minerals and Natural Resources Department

Form C-102
Revised February 10, 1994
Submit to Appropriate District Office
State Lease - 4 Copies
Fee Lease - 3 Copies

DISTRICT II
P.O. Drawer DD, Arlaola, NM 88211-0710

OIL CONSERVATION DIVISION

P.O. Box 2088
Santa Fe, New Mexico 87504-2088

DISTRICT III
1000 Rio Brazos Rd., Aztec, NM 87410

DISTRICT IV
P.O. BOX 2088, SANTA FE, N.M. 87504-2088

WELL LOCATION AND ACREAGE DEDICATION PLAT

AMENDED REPORT

API Number 30-015	Pool Code 28509	Pool Name GRBG JACKSON SR O GRBG SA
Property Code 6497	Property Name BURCH KEELY UNIT	Well Number 926
GRID No. 14049	Operator Name MARBOB ENERGY CORPORATION	Elevation 3638'

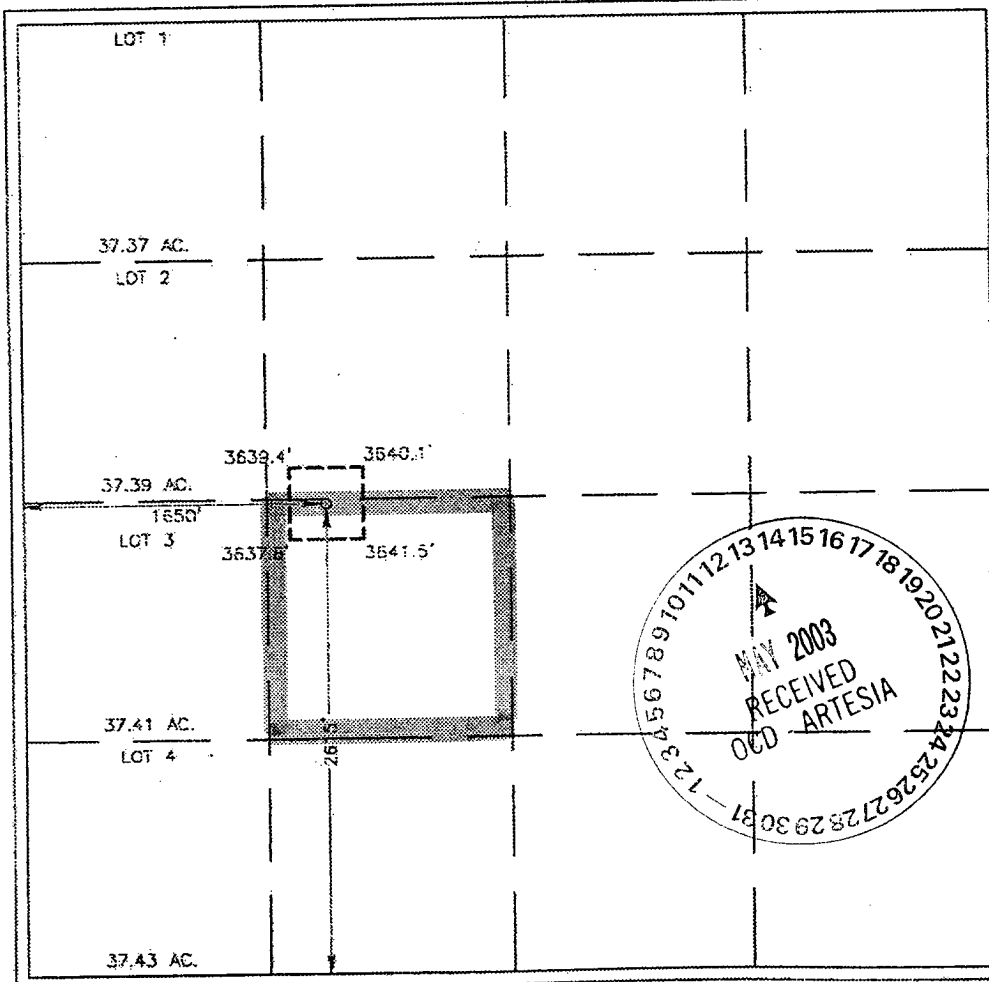
Surface Location

UL or lot No.	Section	Township	Range	Lot Idn	Feet from the	North/South line	Feet from the	East/West line	County
K	18	17-S	30-E		2615	SOUTH	1650	WEST	EDDY

Bottom Hole Location If Different From Surface

UL or lot No.	Section	Township	Range	Lot Idn	Feet from the	North/South line	Feet from the	East/West line	County
Dedicated Acres 40		Joint or Infill	Consolidation Code		Order No.				

NO ALLOWABLE WILL BE ASSIGNED TO THIS COMPLETION UNTIL ALL INTERESTS HAVE BEEN CONSOLIDATED OR A NON-STANDARD UNIT HAS BEEN APPROVED BY THE DIVISION



OPERATOR CERTIFICATION

I hereby certify the the information contained herein is true and complete to the best of my knowledge and belief.

[Signature]
Signature

DIANA J. CANNON
Printed Name

PRODUCTION ANALYST
Title

MARCH 21, 2003
Date

SURVEYOR CERTIFICATION

I hereby certify that the well location shown on this plat was plotted from field notes of actual surveys made by me or under my supervision and that the same is true and correct to the best of my belief.

FEBRUARY 24, 2003
Date Surveyed

[Signature] L.A.
Signature & Seal of Professional Surveyor

03.11.0221
Stamp

Certificate No. RONALD J. EIDSON 2239
GABY EIDSON 12841

