

EC

UNITED STATES
DEPARTMENT OF THE INTERIOR
BUREAU OF LAND MANAGEMENT

OCD-ARTESIA

FORM APPROVED
OMB No. 1004-0136
Expires November 30, 2000

APPLICATION FOR PERMIT TO DRILL OR REENTER

1a. Type of Work: <input checked="" type="checkbox"/> DRILL <input type="checkbox"/> REENTER		CONFIDENTIAL	5. Lease Serial No. NMNM02860
1b. Type of Well: <input checked="" type="checkbox"/> Oil Well <input type="checkbox"/> Gas Well <input type="checkbox"/> Other <input checked="" type="checkbox"/> Single Zone <input type="checkbox"/> Multiple Zone			6. If Indian, Allottee or Tribe Name
2. Name of Operator BASS ENTERPRISES PRODUCTION CO		Contact: CINDI GOODMAN E-Mail: CDGOODMAN@BASSPET.COM	7. If Unit or CA Agreement, Name and No. NMNM71016X
3a. Address P O BOX 2760 MIDLAND, TX 79702		3b. Phone No. (include area code) Ph: 432-683-2277	8. Lease Name and Well No. POKER LAKE UNIT 218
4. Location of Well (Report location clearly and in accordance with any State requirements. *) At surface NWSE 2130FSL 2180FEL 32.12058 N Lat, 103.55069 W Lon At proposed prod. zone NWSE 2130FSL 2180FEL 32.12058 N Lat, 103.55069 W Lon		9. API Well No. 30-015-33989	
14. Distance in miles and direction from nearest town or post office* 14 MILES EAST OF MALAGA, NM		10. Field and Pool, or Exploratory NASH DRAW-DELAWARE	
15. Distance from proposed location to nearest property or lease line, ft. (Also to nearest drig. unit line, if any) 2130'		16. No. of Acres in Lease 2520.68	11. Sec., T., R., M., or Blk. and Survey or Area Sec 19 T24S R30E Mer NMP SME: BLM
18. Distance from proposed location to nearest well, drilling, completed, applied for, on this lease, ft. 1200'		19. Proposed Depth 7550 MD 7550 TVD	12. County or Parish EDDY
21. Elevations (Show whether DF, KB, RT, GL, etc.) 3172 GL		22. Approximate date work will start 03/15/2005	13. State NM
		17. Spacing Unit dedicated to this well 40.00	
		20. BLM/BIA Bond No. on file	
		23. Estimated duration 12 DAYS	

24. Attachments

CARLSBAD CONTROLLED WATER BASIN

The following, completed in accordance with the requirements of Onshore Oil and Gas Order No. 1, shall be attached to this form:

- | | |
|--|--|
| 1. Well plat certified by a registered surveyor.
2. A Drilling Plan.
3. A Surface Use Plan (if the location is on National Forest System Lands, the SUPO shall be filed with the appropriate Forest Service Office). | 4. Bond to cover the operations unless covered by an existing bond on file (see Item 20 above).
5. Operator certification
6. Such other site specific information and/or plans as may be required by the authorized officer. |
|--|--|

25. Signature (Electronic Submission)	Name (Printed/Typed) CINDI GOODMAN Ph: 432-683-2277	Date 01/31/2005
Title AUTHORIZED REPRESENTATIVE		
Approved by (Signature) /s/ Joe G. Lara	Name (Printed/Typed) /s/ Joe G. Lara	Date MAR - 3 2005
Title FIELD MANAGER	Office CARLSBAD FIELD OFFICE	

Application approval does not warrant or certify the applicant holds legal or equitable title to those rights in the subject lease which would entitle the applicant to conduct operations thereon.
Conditions of approval, if any, are attached.

APPROVAL FOR 1 YEAR

Title 18 U.S.C. Section 1001 and Title 43 U.S.C. Section 1212, make it a crime for any person knowingly and willfully to make to any department or agency of the United States any false, fictitious or fraudulent statements or representations as to any matter within its jurisdiction.

Additional Operator Remarks (see next page)

Electronic Submission #53585 verified by the BLM Well Information System
For BASS ENTERPRISES PRODUCTION CO, sent to the Carlsbad
Committed to AFMSS for processing by LINDA ASKWIG on 02/01/2005 (05LA0310AE)APPROVAL SUBJECT TO
GENERAL REQUIREMENTS
AND SPECIAL STIPULATIONS
ATTACHED

Witness Surface Casing

* BLM REVISED ** BLM REVISED ** BLM REVISED ** BLM REVISED **

Additional Operator Remarks:

Surface casing to be set into Rustler below all fresh water sands.
Production casing will be cemented using Zone Seal Cement.
Drilling Procedure, BOP Diagram, Anticipated tops and surface plans attached.

This well is located outside the Secretary's Potash area and outside the R-111 Potash area. There are no potash leases within 1 mile of the location.

DISTRICT I

1625 N. French Dr., Hobbs, NM 88240

DISTRICT II

811 South First, Artesia, NM 88210

DISTRICT III

1000 Rio Brazos Rd., Aztec, NM 87410

DISTRICT IV

2040 South Pacheco, Santa Fe, NM 87505

State of New Mexico

Energy, Minerals and Natural Resources Department

Form C-102

Revised March 17, 1999

Submit to Appropriate District Office

State Lease - 4 Copies

Fee Lease - 3 Copies

OIL CONSERVATION DIVISION

2040 South Pacheco

Santa Fe, New Mexico 87504-2088

☐ AMENDED REPORT

WELL LOCATION AND ACREAGE DEDICATION PLAT

API Number	Pool Code 47545	Pool Name NASH DRAW DELAWARE
Property Code 001796	Property Name POKER LAKE UNIT	Well Number 218
OGRID No. 001801	Operator Name BASS ENTERPRISES PRODUCTION COMPANY	Elevation 3172'

Surface Location

UL or lot No.	Section	Township	Range	Lot Idn	Feet from the	North/South line	Feet from the	East/West line	County
J	19	24 S	30 E		2130	SOUTH	2180	EAST	EDDY

Bottom Hole Location If Different From Surface

UL or lot No.	Section	Township	Range	Lot Idn	Feet from the	North/South line	Feet from the	East/West line	County

Dedicated Acres	Joint or Infill	Consolidation Code	Order No.
40	I		

NO ALLOWABLE WILL BE ASSIGNED TO THIS COMPLETION UNTIL ALL INTERESTS HAVE BEEN CONSOLIDATED
OR A NON-STANDARD UNIT HAS BEEN APPROVED BY THE DIVISION

LOT 1 - 40.77 AC.	40.66 AC.	40.65 AC.	40.65 AC.
LOT 2 - 40.87 AC.	40.69 AC.	40.68 AC.	40.66 AC.
LOT 3 - 40.94 AC.	40.69 AC.	40.68 AC.	40.67 AC.
LOT 4 - 41.06 AC.	40.73 AC.	40.70 AC.	40.70 AC.

LAT - N32°12'05.8"
LONG - W103°55'06.9"

3158.5' 3158.3' 3173.0' 3158.7' 2180' 2130'

OPERATOR CERTIFICATION

I hereby certify the the information contained herein is true and complete to the best of my knowledge and belief.

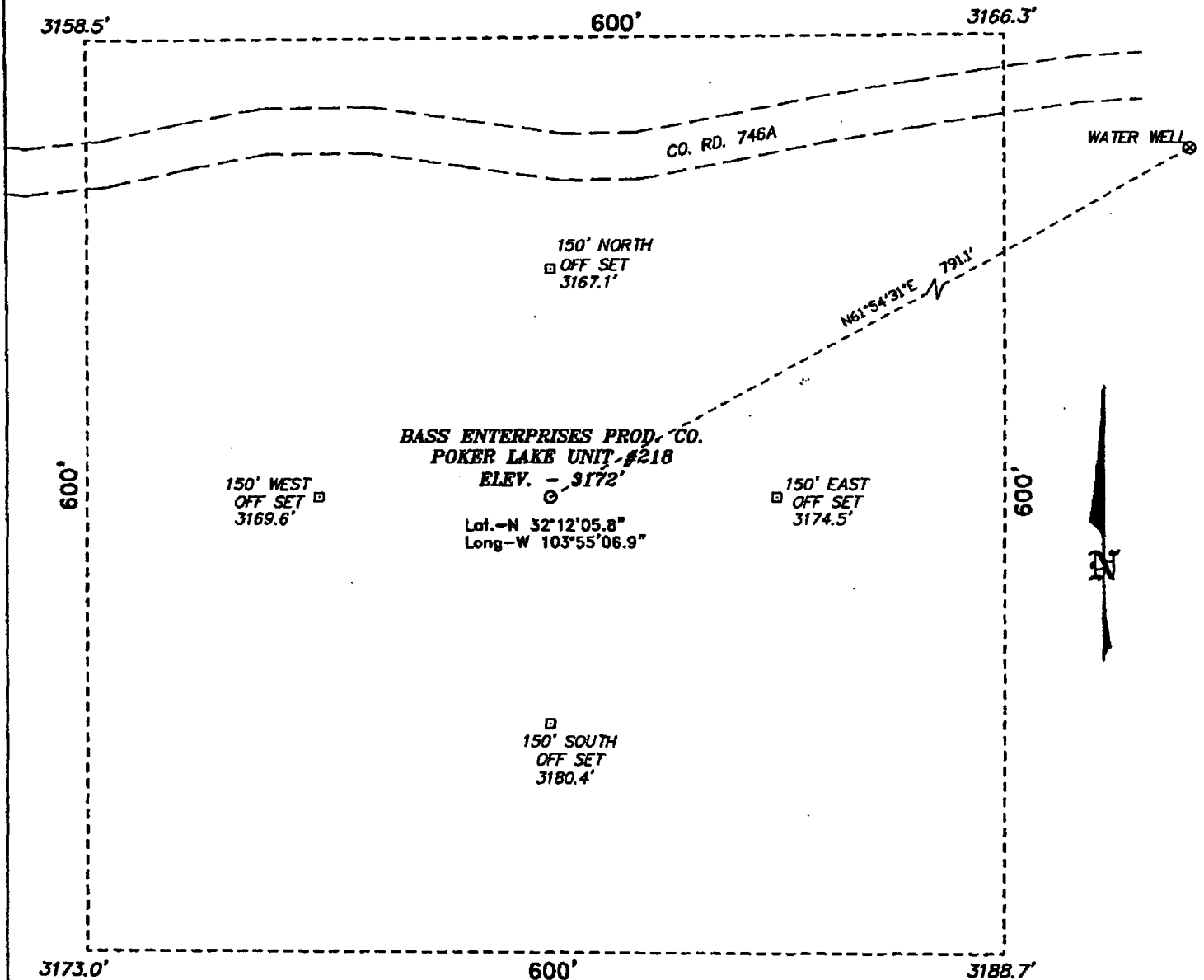
William R. Dannels
Signature
W.R. DANNELS
Printed Name
DIVISION DRILLING, SUPT.
Title
1/31/05
Date

SURVEYOR CERTIFICATION

I hereby certify that the well location shown on this plat was plotted from field notes of actual surveys made by me or under my supervision, and that the same is true and correct to the best of my belief.

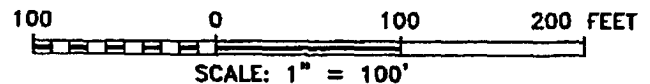
APR 18 2004
Date Surveyed
Signature & Seal of Professional Surveyor
Certificate No. 7977
BASIN SURVEYS

**SECTION 19, TOWNSHIP 24 SOUTH, RANGE 30 EAST, N.M.P.M.,
EDDY COUNTY, NEW MEXICO.**



DIRECTIONS TO LOCATION:

FROM THE JUNCTION OF CO. RD. 746A AND CO. RD. 748, GO EASTERLY ON CO. RD. 746A FOR APPROX. 0.8 MILE TO A POINT ON THE PROPOSED WELL PAD.



BASS ENTERPRISES PRODUCTION CO.

REF: POKER LAKE UNIT No. 218 / Well Pad Topo

THE POKER LAKE UNIT No. 218 LOCATED 2130' FROM
THE SOUTH LINE AND 2180' FROM THE EAST LINE OF
SECTION 19, TOWNSHIP 24 SOUTH, RANGE 30 EAST,

N.M.P.M., EDDY COUNTY, NEW MEXICO.

BASIN SURVEYS P.O. BOX 1786 - HOBBS, NEW MEXICO

W.O. Number: 4145 Drawn By: K. GOAD

Date: 04-23-2004 Disk: KJG CD#7 - 4145A.DWG

Survey Date: 04-15-2004 Sheet 1 of 1 Sheets

EIGHT POINT DRILLING PROGRAM BASS ENTERPRISES PRODUCTION CO.

NAME OF WELL: Poker Lake Unit #218

LEGAL DESCRIPTION - SURFACE: 2130' FSL & 2180' FEL, Section 19, T-24-S, R-30-E, Eddy County, New Mexico.

POINT 1: ESTIMATED FORMATION TOPS

(See No. 2 Below)

POINT 2: WATER, OIL, GAS AND/OR MINERAL BEARING FORMATIONS

Anticipated Formation Tops: KB 3192' (est) GL 3172'

<u>FORMATION</u>	<u>ESTIMATED TOP FROM KB</u>	<u>ESTIMATED SUBSEA TOP</u>	<u>BEARING</u>
T/Rustler	167'	+3025	Barren
T/Salt	407'	+2785'	Barren
T/Lwr Brushy Canyon "8" A	6977'	-3785'	Oil/Gas
T/Bone Spring	7250'	-4058'	Oil/Gas
TD	7550'	-4358'	

POINT 3: CASING PROGRAM

<u>TYPE</u>	<u>INTERVALS</u>	<u>PURPOSE</u>	<u>CONDITION</u>
16"	0' - 40'	Conductor	Contractor Discretion
8-5/8", 28#, J-55, LT&C	0' - 375'	Surface	New
5-1/2", 15.5#, J-55, LT&C	0' - 6300'	Production	New
5-1/2", 17#, J-55, LT&C	6300' - 7550'	Production	New

WITNESS

POINT 4: PRESSURE CONTROL EQUIPMENT (SEE ATTACHED DIAGRAM)

A BOP equivalent to Diagram 1 will be nipped up on the surface casing head. The BOP stack, choke, kill lines, kelly cocks, inside BOP, etc. will be hydro-tested to 70% of internal yield pressure of casing. In addition to the high pressure test, a low pressure (200 psi) test will be required. These tests will be performed:

- Upon installation
- After any component changes
- Fifteen days after a previous test
- As required by well conditions

A function test to insure that the preventers are operating correctly will be performed on each trip.

POINT 5: MUD PROGRAM

DEPTH	MUD TYPE	WEIGHT	FV	PV	YP	FL	Ph
0' - 375'	FW Spud Mud	8.5 - 9.2	70-38	NC	NC	NC	10.0
375' - 5800'	Brine Water	9.8 - 10.2	28-30	NC	NC	NC	9.5-10.5
5800' - TD'	Brine Water/Diesel	8.8 - 9.0	32-40	8	2	<25 cc	9.5 - 10.0

**May increase vis for logging purposes only.*

POINT 6: TECHNICAL STAGES OF OPERATION**A) TESTING**

None anticipated.

B) LOGGING

GR-CNL-LDT-AIT from TD to base of Salt (+/- 3200').
GR-CNL-CAL from base of Salt to surface.

C) CONVENTIONAL CORING

None anticipated.

D) CEMENT

INTERVAL	AMOUNT SXS	FT OF FILL	TYPE	GALS/SX	PPG	FT ³ /SX	COMPRESSIVE	
SURFACE:							Nitrogen	Strength
Lead 0'-375' (100% excess circ to surface)	250	375	Prem Plus + 2% CaCl ₂ + 1/2# Floccle	6.33	14.8	1.35		
PRODUCTION:								
Base Slurry w/nitrogen 2850-7550' + (50% excess)	775	4700	Premium Plus + 2% Zone Sealant 2000	6.32	9.1-14.5	2.3-1.39	300/600 scf/bbl	1200

E) DIRECTIONAL DRILLING

No directional services anticipated.

POINT 7: ANTICIPATED RESERVOIR CONDITIONS

Normal pressures are anticipated throughout Delaware section. A BHP of 3415 psi (max) or MWE of 8.7 ppg is expected. Lost circulation may exist in the Delaware Section from 3461-7250'. No H₂S is anticipated.

MULTI-POINT SURFACE USE PLAN

NAME OF WELL: Poker Lake Unit #218

LEGAL DESCRIPTION - SURFACE: 2130' FSL & 2180' FEL, Section 19, T-24-S, R-30-E, Eddy County, New Mexico.

POINT 1: EXISTING ROADS

A) Proposed Well Site Location:

See Exhibit A, B and Survey Plats

B) Existing Roads:

From Carlsbad, New Mexico, go 8 miles south on Highway 285 to Highway 31. Turn north and go 7 miles on Highway 31. Turn east on Highway 128 and go 4 miles to Rawhide Road (located between mile markers 4 and 5). Turn southeast onto Rawhide Road and go approximately 11.0 miles southerly.

C) Existing Road Maintenance or Improvement Plan:

See Exhibit A and Survey Plats.

POINT 2: NEW PLANNED ACCESS ROUTE

A) Route Location:

See Exhibit A. No new roads required. Location is located adjacent to an existing lease road.

B) Width

N/A

C) Maximum Grade

Not applicable.

D) Turnout Ditches

Spaced per BLM requirements.

E) Culverts, Cattle Guards, and Surfacing Equipment

If required, culverts and cattle guards will be set per BLM Specs.

POINT 3: LOCATION OF EXISTING WELLS

Exhibit A indicates existing wells within the surrounding area.

POINT 12: OPERATOR'S FIELD REPRESENTATIVE

Page 6

(Field personnel responsible for compliance with development plan for surface use).

DRILLING

William R. Dannels
Box 2760
Midland, Texas 79702
(432) 683-2277

PRODUCTION

Mike Waygood
3104 East Green Street
Carlsbad, New Mexico 88220
(505) 887-7329

Kent A. Adams
Box 2760
Midland, Texas 79702
(432) 683-2277

POINT 13: CERTIFICATION

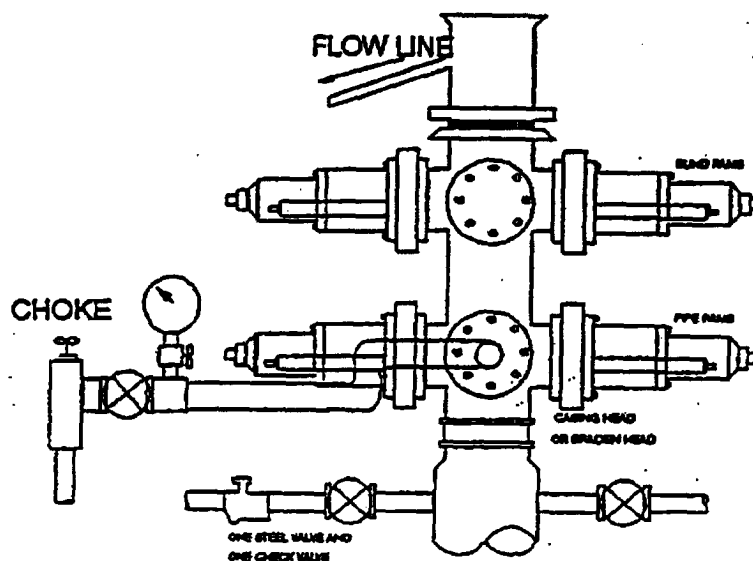
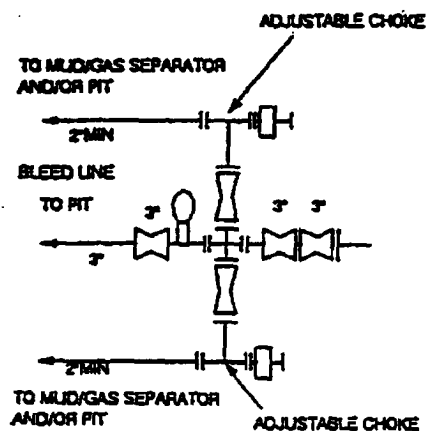
I hereby certify that I, or persons under my direct supervision have inspected the proposed drill site and access route; that I am familiar with the conditions which currently exist; that the statements made in the plan are, to the best of my knowledge, true and correct; and that the work associated with operations proposed herein will be performed by Bass Enterprises Production Co. and it's contractors and subcontractors in conformity with this plan and the terms and conditions under which it is approved. This statement is subject to the provisions of 18 U.S.C. 1001 for the filing of a false statement.

Date

1/31/05William R. Dannels
William R. Dannels

WCH/cdg

2000 PSI WP

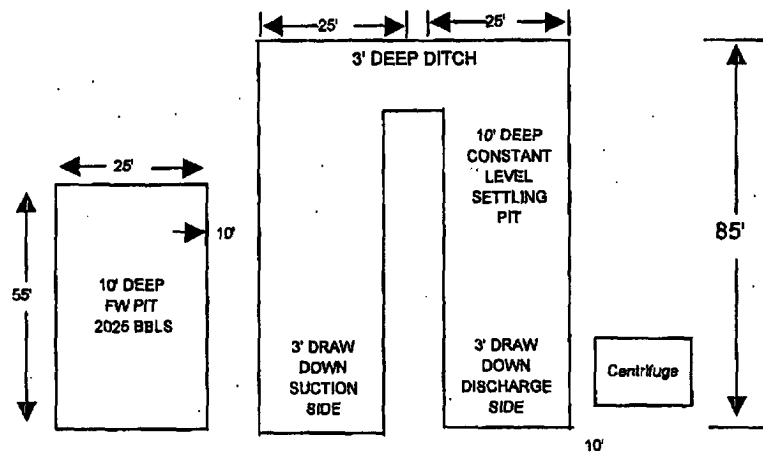
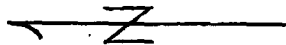


THE FOLLOWING CONSTITUTE MINIMUM BLOWOUT PREVENTER REQUIREMENTS

- A. One double gate blowout preventer with lower rams for pipe and upper rams blind, all hydraulically controlled.
- B. Opening on preventers between rams to be flanged, studded or clamped and at least two inches in diameter.
- C. All connections from operating manifold to preventers to be all steel hose or tube a minimum of one inch in diameter.
- D. The available closing pressure shall be at least 15% in excess of that required with sufficient volume to operate (close, open, and re-close) the preventers.
- E. All connections to and from preventers to have a pressure rating equivalent to that of the BOP's.
- F. Manual controls to be installed before drilling cement plug.
- G. Valve to control flow through drill pipe to be located on rig floor.
- H. All chokes will be adjustable. Choke spool may be used between rams.

**Bass Enterprises Production Company
Grey Wolf Rig 15
Well Pad
Reserve Pit Diagram**

EXHIBIT "D"



Access Road (EXISTING)

