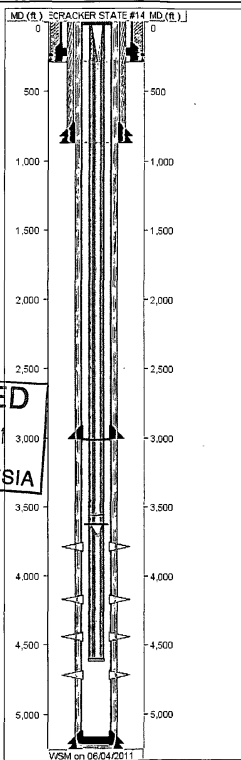


Well ID: 30-015-38423

Well Name: FIRECRACKER STATE #14

Event#: 2.00

Report Dates: 06/04/2011



PIPE SPECIFICATION

STRING NAME	SECTION NAME	JOINT COUNT	START DEPTH	END DEPTH	LENGTH	OD SIZE	ID SIZE	WT GRDNT	GRD	CONN
SURFACE	GUIDE SHOE		283.90	285.00	1.10					
SURFACE	CASING	1	242.58	283.90	41.32	13.38	12.71	48.0	H-40	STC
SURFACE	FLOAT COLLAR		242.58	242.58	0.00					
SURFACE	CASING	6	-5.84	242.58	248.42	13.38	12.71	48.0	H-40	STC
PRODUCTION	FLOAT SHOE		5253.55	5255.00	1.45					
PRODUCTION	CASING	1	5210.81	5253.55	42.74	5.50	4.89	17.0	J55	LTC
PRODUCTION	FLOAT COLLAR		5209.51	5210.81	1.30					
PRODUCTION	CASING	52	3015.60	5209.51	2193.91	5.50	4.89	17.0	J55	LTC
PRODUCTION	MARKER JOINT	1	3001.60	3015.60	14.00	5.50	4.89	17.0	J55	LTC
PRODUCTION	CASING	71	14.06	3001.60	2987.54	5.50	4.89	17.0	J55	LTC
PRODUCTION	LANDING JOINT		-0.69	14.06	14.75	5.50	4.89	17.0	J55	LTC
TUBING	BULL PLUG		4715.02	4715.65	0.63					
TUBING	TUBING	3	4617.37	4715.02	97.65					
TUBING	CAVIN DESANDER		4598.07	4617.37	19.30	3.00	2.44	6.5	J55	8RD
TUBING	SEATING NIPPLE		4596.97	4598.07	1.10	2.88	2.25	6.5	J55	8RD
TUBING	TUBING	30	3622.87	4596.97	974.10	2.88	2.44	6.5	J55	8RD
TUBING	TUBING ANCHOR		3620.17	3622.87	2.70	4.50	2.44	6.5	J55	8RD
TUBING	TUBING	2	3555.05	3620.17	65.12	2.88	2.44	6.5	J55	8RD
TUBING	MARKER JOINT		3553.05	3555.05	2.00	2.88	2.44	6.5	J55	8RD
TUBING	TUBING	109	10.00	3553.05	3543.05	2.88	2.44	6.5	J55	8RD
TUBING	ELEVATION		0.00	10.00	10.00					
INTERMEDIATE	GUIDE SHOE		866.90	868.00	1.10					
INTERMEDIATE	CASING	1	824.09	866.90	42.81	8.63	8.10	24.0	J55	STC
INTERMEDIATE	FLOAT COLLAR		822.64	824.09	1.45					
INTERMEDIATE	CASING	20	-4.69	822.64	827.33	8.63	8.10	24.0	J55	STC

CEMENTING

STRING NAME	STAGE #	LEAD TOP (est) (ft)	LEAD TOP (ver) (ft)	TAIL TOP (est) (ft)	TAIL TOP (ver) (ft)
SURFACE	1	0.0	0.0		
PRODUCTION	1	0.0	0.0		
INTERMEDIATE	1	0.0	0.0	0.0	0.0

BHA STRING

DRILL EQUIP CODE	DESCRIPTION	LENGTH	OD SIZE	ID SIZE

PERFORATION

ZONE	JOB REPORT DATE	ZONE NAME	TOP DEPTH	BOTTOM DEPTH	HOLE SIZE	PEN SIZE	SQUEEZED
1	05/27/2011	BLINEBRY	4610.00	4810.00	0.21	13.00	N
2	05/28/2011	BLINEBRY	4340.00	4540.00	0.34	13.00	N

RECEIVED
JUL 22 2011
NMOCD ARTESIA

Well ID: 30-015-38423

Well Name: FIRECRACKER STATE #14

Event#: 2.00

Report Dates: 06/04/2011

PERFORATION							
ZONE	JOB REPORT DATE	ZONE NAME	TOP DEPTH	BOTTOM DEPTH	HOLE SIZE	PEN SIZE	SQUEEZED
3	05/28/2011	BLINEBRY	4070.00	4270.00	0.34	13.00	N
4	05/28/2011	PADDOCK	3670.00	3900.00	0.34	13.00	N