

DISTRICT I
1625 N. FRENCH DR., HOBBS, NM 88240

State of New Mexico
Energy, Minerals and Natural Resources Department

Bl

Form C-102

Revised October 12, 2005

Submit to Appropriate District Office

State Lease - 4 Copies

Fee Lease - 3 Copies

DISTRICT II
1301 W. GRAND AVENUE, ARTESIA, NM 88210

OIL CONSERVATION DIVISION

11885 SOUTH ST. FRANCIS DR.
Santa Fe, New Mexico 87505

DISTRICT III
1000 RIO BRAZOS RD., AZTEC, NM 87410

DISTRICT IV
11885 S. ST. FRANCIS DR., SANTA FE, NM 87505

WELL LOCATION AND ACREAGE DEDICATION PLAT

AMENDED REPORT

API Number 30-015-39247	Pool Code 96830	Pool Name Artesia; Glorieta-Yeso
Property Code 308712	Property Name D STATE	Well Number 53
OGRID No. 873	Operator Name APACHE CORPORATION	Elevation 3675'

Surface Location

UL or lot No.	Section	Township	Range	Lot Idn	Feet from the	North/South line	Feet from the	East/West line	County
J	35	17--S	28--E		2310	SOUTH	2310	EAST	EDDY

Bottom Hole Location If Different From Surface

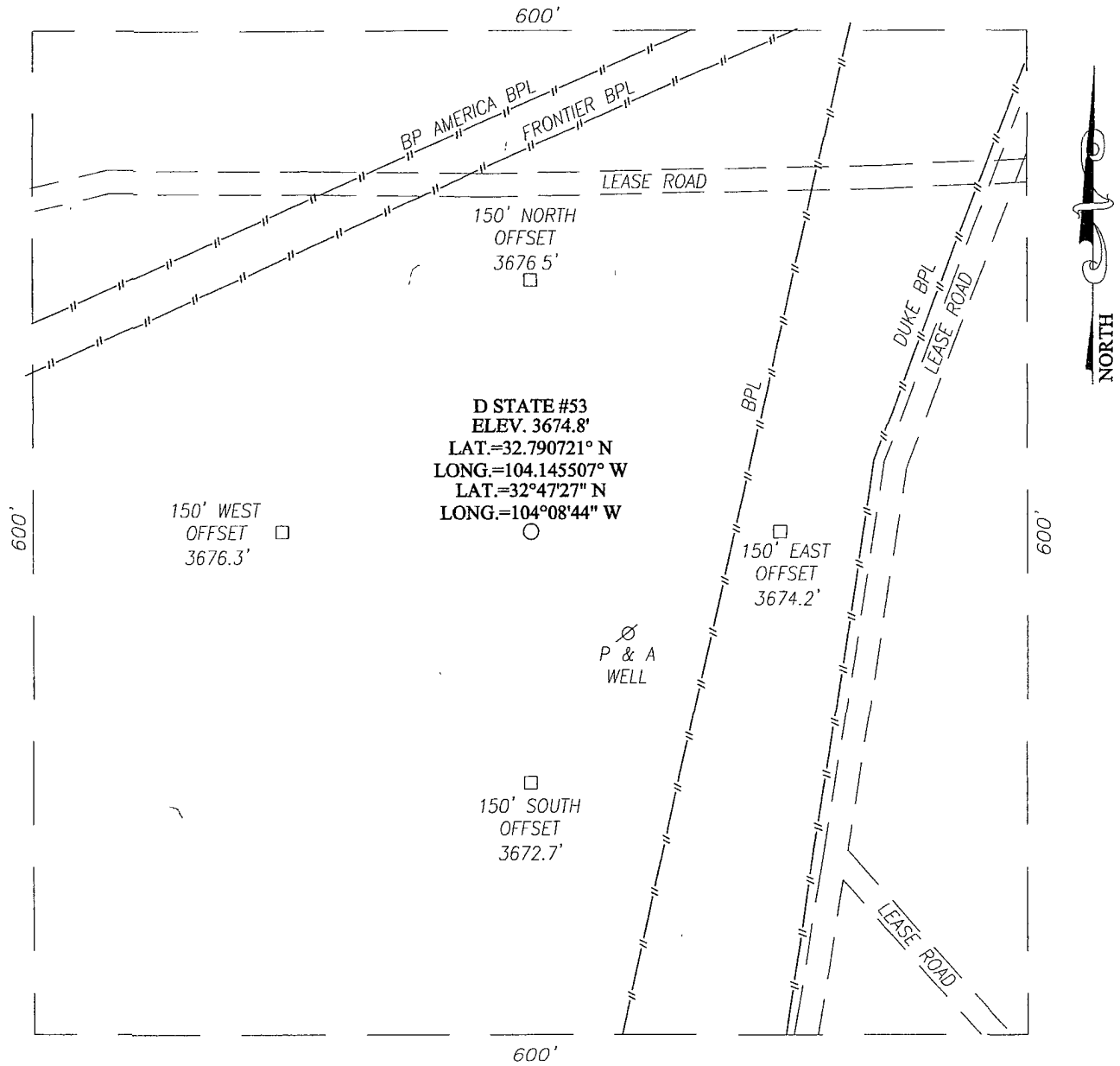
UL or lot No.	Section	Township	Range	Lot Idn	Feet from the	North/South line	Feet from the	East/EAST line	County

Dedicated Acres	Joint or Infill	Consolidation Code	Order No.
40			

NO ALLOWABLE WILL BE ASSIGNED TO THIS COMPLETION UNTIL ALL INTERESTS HAVE BEEN CONSOLIDATED OR A NON-STANDARD UNIT HAS BEEN APPROVED BY THE DIVISION

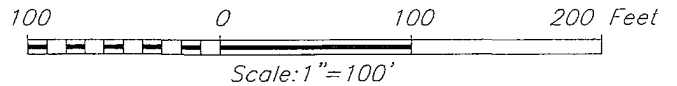
	<p>RECEIVED AUG 11 2011 NMOCD ARTESIA</p>	<p>OPERATOR CERTIFICATION</p> <p><i>I hereby certify that the information herein is true and complete to the best of my knowledge and belief, and that this organization either owns a working interest or unleased mineral interest in the land including the proposed bottom hole location or has a right to drill this well at this location pursuant to a contract with an owner of such mineral or working interest, or to a voluntary pooling agreement or a compulsory pooling order heretofore entered by the division.</i></p> <p><u>Sorina L. Flores</u> 2/2/11 Signature Date</p> <p>Sorina L. Flores Printed Name</p>
	<p>GEODETIC COORDINATES NAD 27 NME Y=651426.5 N X=557720.0 E</p> <p>LAT.=32 790721" N LONG.=104.145507" W LAT.=32°47'27" N LONG =104°08'44" W</p>	<p>SURVEYOR CERTIFICATION</p> <p><i>I hereby certify that the well location shown on this plat was plotted from field notes of actual surveys made by me or under my supervision, and that the same is true and correct to the best of my belief.</i></p> <p>JANUARY 18, 2011</p>
	<p>Date Surveyed _____ LA</p> <p>Signature & Seal of Professional Surveyor</p> <p></p> <p>11.17007B</p>	
	<p>Certificate No. GARY G. EDSON 12641 RONALD B. EDSON 3239</p>	

SECTION 35, TOWNSHIP 17 SOUTH, RANGE 28 EAST, N.M.P.M.,
 EDDY COUNTY, NEW MEXICO



DIRECTIONS TO LOCATION

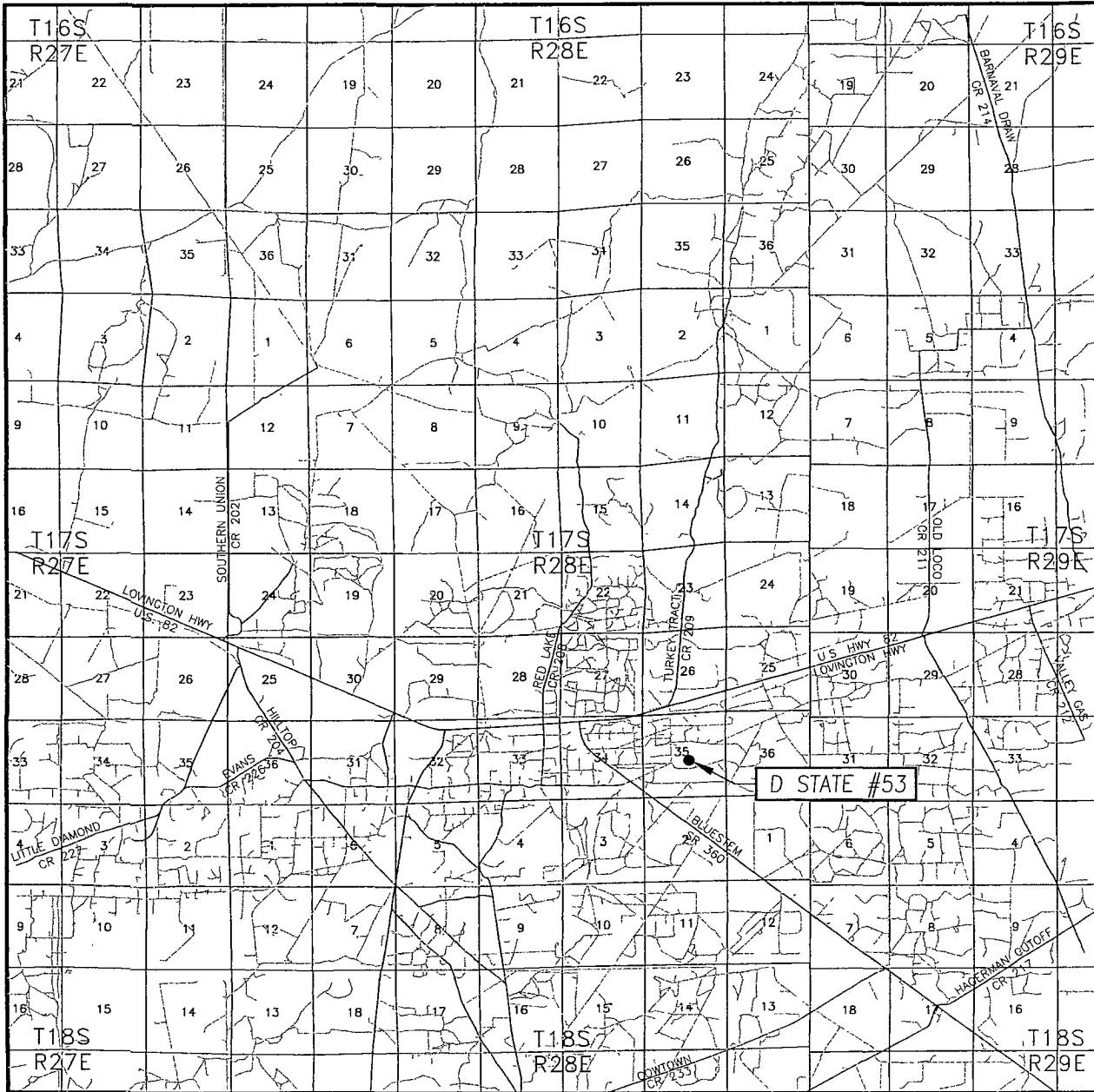
FROM THE INTERSECTION OF U.S. HWY. #82 (LOVINGTON HWY) AND CO. RD. #209 (TURKEY TRACK RD), GO SOUTH ON CO RD #209 APPROX. 0.6 MILES. TURN LEFT AND GO NORTHEAST APPROX. 400 FEET THE LOCATION STAKE IS APPROX. 200 FEET SOUTH



PROVIDING SURVEYING SERVICES SINCE 1946
JOHN WEST SURVEYING COMPANY
 412 N. DAL PASO
 HOBBS, N.M. 88240
 (575) 393-3117


APACHE CORPORATION			
D STATE #53 WELL LOCATED 2310 FEET FROM THE SOUTH LINE AND 2310 FEET FROM THE EAST LINE OF SECTION 35, TOWNSHIP 17 SOUTH, RANGE 28 EAST, N.M.P.M., EDDY COUNTY, NEW MEXICO			
Survey Date: 1/18/11	Sheet 1 of 1 Sheets		
W.O Number: 11 11 0078	Dr By LA	Rev 1-N/A	
Date 1/27/11		11110078	Scale 1"=100'

VICINITY MAP



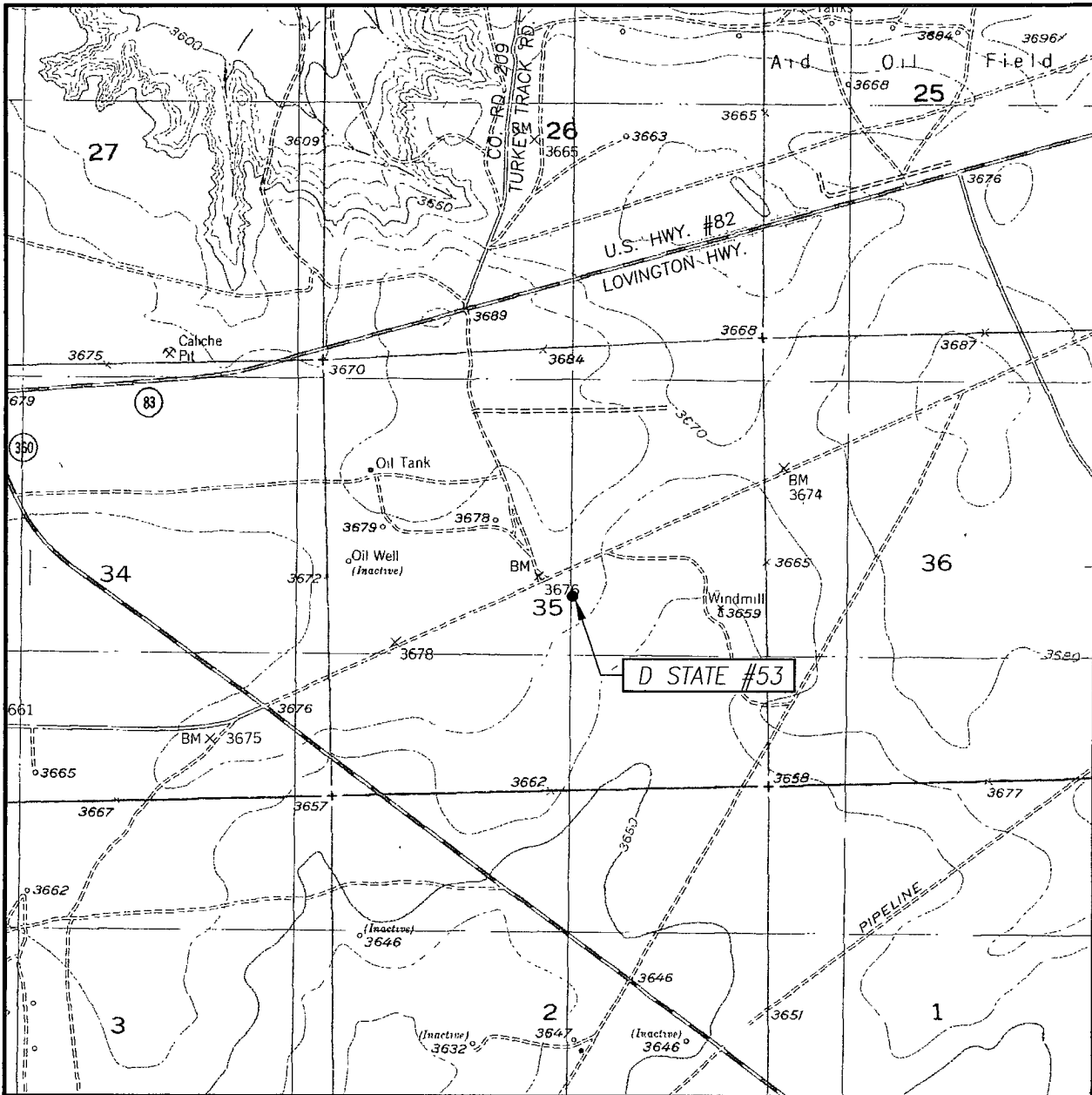
SCALE: 1" = 2 MILES

SEC. 35 TWP. 17-S RGE 28-E
 SURVEY _____ N.M.P.M. _____
 COUNTY EDDY STATE NEW MEXICO
 DESCRIPTION 2310' FSL & 2310' FEL
 ELEVATION 3675'
 OPERATOR APACHE CORPORATION
 LEASE D STATE



PROVIDING SURVEYING SERVICES
 SINCE 1946
JOHN WEST SURVEYING COMPANY
 412 N DAL PASO
 HOBBS, N M 88240
 (575) 393-3117

LOCATION VERIFICATION MAP



SCALE: 1" = 2000'

CONTOUR INTERVAL:
 RED LAKE, N.M - 10'
 RED LAKE SE, N.M. - 10'

SEC. 35 TWP. 17-S RGE. 28-E

SURVEY _____ N.M.P.M. _____

COUNTY EDDY STATE NEW MEXICO


DESCRIPTION 2310' FSL & 2310' FEL

ELEVATION 3675'

OPERATOR APACHE CORPORATION

LEASE D STATE

U.S.G.S. TOPOGRAPHIC MAP
RED LAKE, N.M



PROVIDING SURVEYING SERVICES
 SINCE 1946
JOHN WEST SURVEYING COMPANY
 412 N. DAL PASO
 HOBBS, N.M 88240
 (575) 393-3117