

Submit 3 Copies To Appropriate District
Office
District I
1625 N. French Dr., Hobbs, NM 88240
District II
1301 W. Grand Ave., Artesia, NM 88210
District III
1000 Rio Brazos Rd., Aztec, NM 87410
District IV
1220 S. St. Francis Dr., Santa Fe, NM
87505

State of New Mexico
Energy, Minerals and Natural Resources

Form C-103
May 27, 2004

OIL CONSERVATION DIVISION
1220 South St. Francis Dr.
Santa Fe, NM 87505

WELL API NO. 30-015-25905
5. Indicate Type of Lease STATE <input type="checkbox"/> FEE <input checked="" type="checkbox"/>
6. State Oil & Gas Lease No.
7. Lease Name or Unit Agreement Name Roy AET
8. Well Number 1
9. OGRID Number 025575
10. Pool name or Wildcat North Dagger Draw Upper Penn

SUNDRY NOTICES AND REPORTS ON WELLS (DO NOT USE THIS FORM FOR PROPOSALS TO DRILL OR TO DEEPEN OR PLUG BACK TO A DIFFERENT RESERVOIR. USE "APPLICATION FOR PERMIT" (FORM C-101) FOR SUCH PROPOSALS.)	
1. Type of Well: Oil Well <input checked="" type="checkbox"/> Gas Well <input type="checkbox"/> Other <input type="checkbox"/>	RECEIVED
2. Name of Operator Yates Petroleum Corporation	MAR 15 2005
3. Address of Operator 105 S. 4 th Street, Artesia, NM 88210	OCD-ARTESIA
4. Well Location Unit Letter N : 660 feet from the South line and 1980 feet from the West line Section 8 Township 19S Range 25E NMPM Eddy County	
11. Elevation (Show whether DR, RKB, RT, GR, etc.) 3559'GR	
Pit or Below-grade Tank Application <input type="checkbox"/> or Closure <input type="checkbox"/>	
Pit type _____ Depth to Groundwater _____ Distance from nearest fresh water well _____ Distance from nearest surface water _____	
Pit Liner Thickness: _____ mil Below-Grade Tank: Volume _____ bbls; Construction Material _____	

12. Check Appropriate Box to Indicate Nature of Notice, Report or Other Data

NOTICE OF INTENTION TO:

PERFORM REMEDIAL WORK ☐ PLUG AND ABANDON ☒
TEMPORARILY ABANDON ☐ CHANGE PLANS ☐
PULL OR ALTER CASING ☐ MULTIPLE COMPL ☐

OTHER: ☐

SUBSEQUENT REPORT OF:

REMEDIAL WORK ☐ ALTERING CASING ☐
COMMENCE DRILLING OPNS. ☐ PLUG AND ABANDON ☐
CASING/CEMENT JOB ☐

OTHER: ☐

13. Describe proposed or completed operations. (Clearly state all pertinent details, and give pertinent dates, including estimated date of starting any proposed work). SEE RULE 1103. For Multiple Completions: Attach wellbore diagram of proposed completion or recompletion.

Yates Petroleum Corporation plans to plug and abandon this well as follows: CIBP already set at 7708'.

1. Rig up safety equipment as needed.
2. Circulate hole with plugging mud and spot 25 sx plug from 7574'-7474'.
3. Perforate squeeze holes at 5394'.
4. RIH with packer and tubing +/-5200' and pump 40 sx in and out of casing. Tag plug.
5. Perforate squeeze holes at 4670'.
6. RIH with packer and tubing +/-4500' and pump 40 sx in and out of casing. Tag plug.
7. Perforate squeeze holes at 1988'.
8. RIH with packer and tubing +/-1800' and pump 40 sx in and out of casing. Tag plug.
9. Perforate squeeze holes at 1223'.
10. RIH with packer and tubing +/-1050' and pump 40 sx in and out of casing. Tag plug.
11. Perforate squeeze holes at 60'.
12. Install 7" casing swedge to circulate cement from 60' to surface with 25 sx plug.
13. Install dry hole marker and clean up location as per regulated.

NOTE: Yates Petroleum Corporation will use steel pits and no earth pits

Notify OCD 24 hrs. prior to any work done

I hereby certify that the information above is true and complete to the best of my knowledge and belief. I further certify that any pit or below-grade tank has been/will be constructed or closed according to NMOCD guidelines ☐, a general permit ☐ or an (attached) alternative OCD-approved plan ☐.

SIGNATURE Tina Huerta TITLE Regulatory Compliance Supervisor DATE March 14, 2005

Type or print name Tina Huerta E-mail address: tinah@ypcnm.com Telephone No. 505-748-1471

For State Use Only

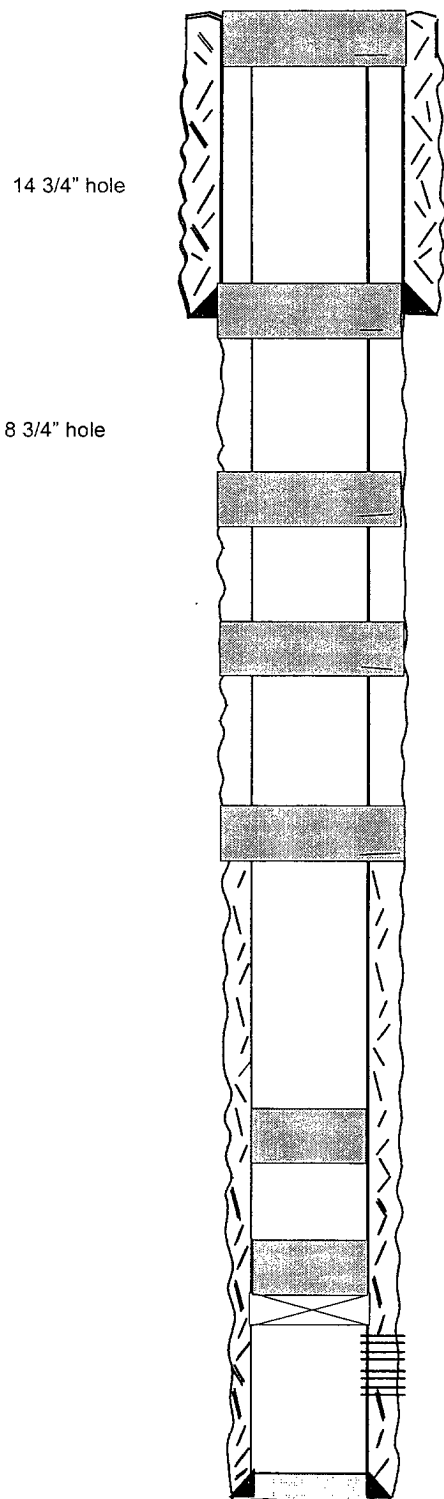
APPROVED BY: PhD Hankins TITLE Field Inspector DATE 3/18/05

Conditions of Approval (if any):

WELL NAME: Roy "AET" St. No # 1 **Field:** Dagger Draw
LOCATION: Sec 8, T19S-R25E 660' FSL & 1980' FWL Eddy County
GL: 3559' **ZERO:** 14' **KB:** 3573'
SPUD DATE: 5/20/88 **COMPLETION DATE:** 8/12/88
COMMENTS: 30-015-25905

CASING PROGRAM

AFTER



Surface plug (TAG)

60' – surface' with 25 sx cmt
in and out of casing

9 5/8" @ 1173' w/ 950 sx
(circ)

Casing shoe plug (TAG)

1223' – 1123' with 40 sx cmt
in and out of casing

Glorieta Top plug (TAG)

1988' – 1888' with 40 sx cmt
in and out of casing

Abo Top plug (TAG)

4670' – 4570' with 40 sx cmt
in and out of casing

Wolfcamp Top plug (TAG)

5394' – 5294' with 40 sx cmt
in and out of casing

TOC 6560' CBL

Canyon Top Plug

7574' – 7474' with 25 sx cmt

CIBP @ 7708' W/ 35' CMT

Upper Penn

Perf's: 7758'-7846' w/ 162 .43" holes
Acidize: 66,000 g 20% HCL

7" @ 8038' w/ 300 sx cmt

TD 8038'

9 5/8" 36# 8R J-55	1173'
7" 26# N-80 LT&C	26'
7" 23# K-55 LT&C	5633'
7" 23# N-80 LT&C	6649'
7" 26# N-80 LT&C	8038'

TOPS

San Andres	466'
Glorieta	1938'
Abo	4620'
Wolfcamp	5344'
Canvon Lime	7524'

Not to Scale

WELL NAME: Roy "AET" St. No # 1 Field: Dagger Draw

LOCATION: Sec 8, T19S-R25E 660' FSL & 1980' FWL Eddy County

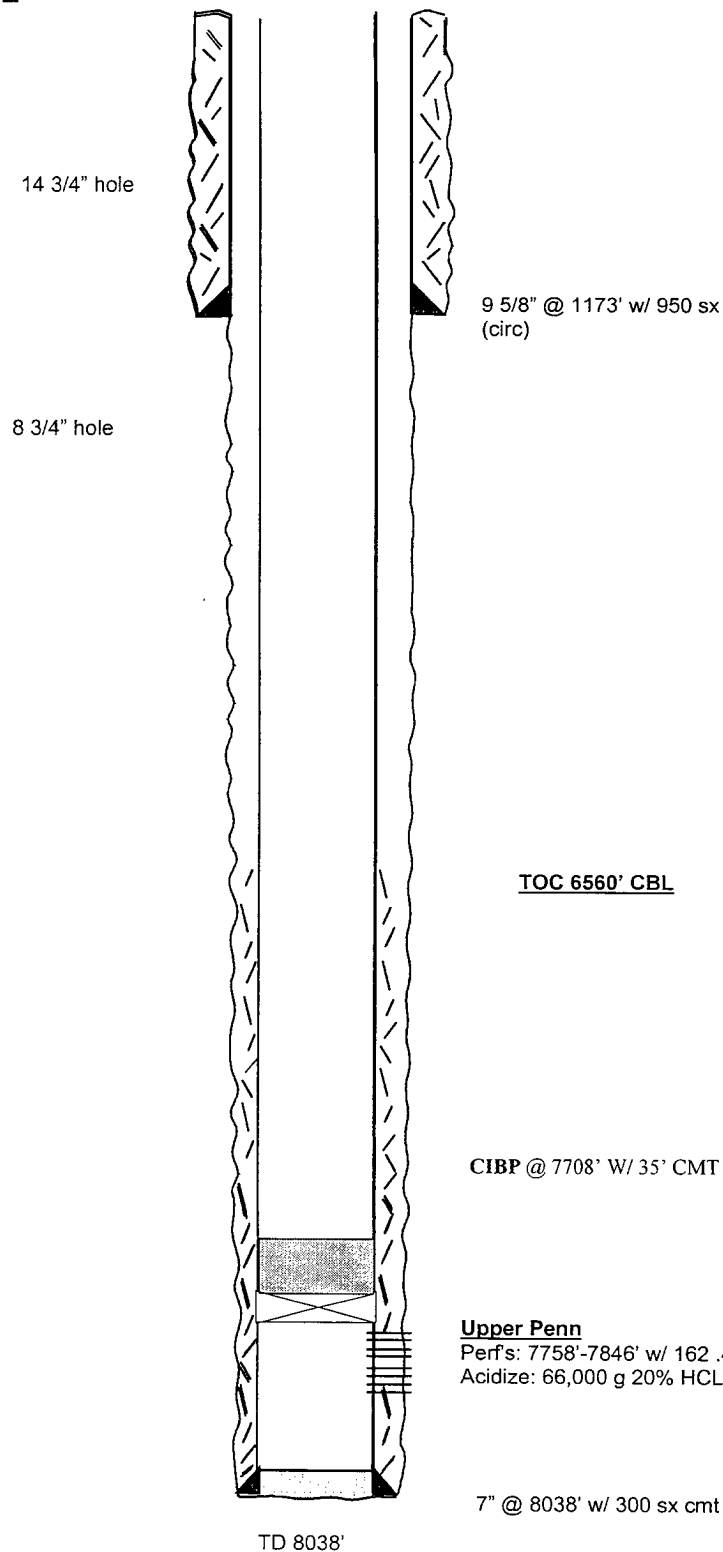
GL: 3559' ZERO: 14' KB: 3573'

SPUD DATE: 5/20/88 COMPLETION DATE: 8/12/88

COMMENTS: 30-015-25905

CASING PROGRAM

BEFORE



9 5/8" 36# 8R J-55	1173'
7" 26# N-80 LT&C	26'
7" 23# K-55 LT&C	5633'
7" 23# N-80 LT&C	6649'
7" 26# N-80 LT&C	8038'

TOPS

San Andres	466'
Glorieta	1938'
Wolfcamp	5344'
Canyon Lime	7524'

Not to Scale