

Submit 1 Copy To Appropriate District Office  
District I - (575) 393-6161  
1625 N. French Dr., Hobbs, NM 88240  
District II - (575) 748-1283  
811 S. First St., Artesia, NM 88210  
District III - (505) 334-6178  
1000 Rio Brazos Rd., Aztec, NM 87410  
District IV - (505) 476-3460  
1220 S. St. Francis Dr., Santa Fe, NM 87505

State of New Mexico  
Energy, Minerals and Natural Resources

OIL CONSERVATION DIVISION  
1220 South St. Francis Dr.  
Santa Fe, NM 87505

Form C-103  
Revised July 18, 2013

WELL API NO.	30-015-45683
5. Indicate Type of Lease STATE <input type="checkbox"/> FEE <input checked="" type="checkbox"/>	
6. State Oil & Gas Lease No.	-
7. Lease Name or Unit Agreement Name	Brantley Fee 2419 WC
8. Well Number	002H
9. OGRID Number	12361
10. Pool name or Wildcat	Purple Sage Wolfcamp Gas Pool
11. Elevation (Show whether DR, RKB, RT, GR, etc.)	2996 GR

**SUNDRY NOTICES AND REPORTS ON WELLS**  
(DO NOT USE THIS FORM FOR PROPOSALS TO DRILL OR TO DEEPEN OR PLUG BACK TO A DIFFERENT RESERVOIR. USE "APPLICATION FOR PERMIT" (FORM C-101) FOR SUCH PROPOSALS.)

1. Type of Well: Oil Well ☐ Gas Well ☒ Other

2. Name of Operator  
Kaiser-Francis Oil Company

3. Address of Operator  
P. O. Box 21468, Tulsa, OK 74121-1468

4. Well Location  
Unit Letter M : 975 feet from the South line and 185 feet from the West line  
Section 24 Township 23 S Range 28E NMPM Eddy County

12. Check Appropriate Box to Indicate Nature of Notice, Report or Other Data

NOTICE OF INTENTION TO:

- PERFORM REMEDIAL WORK ☐ PLUG AND ABANDON ☐  
TEMPORARILY ABANDON ☐ CHANGE PLANS ☐  
PULL OR ALTER CASING ☐ MULTIPLE COMPL ☐  
DOWNHOLE COMMINGLE ☐  
CLOSED-LOOP SYSTEM ☐  
OTHER: ☐

SUBSEQUENT REPORT OF:

- REMEDIAL WORK ☐ ALTERING CASING ☐  
COMMENCE DRILLING OPNS. ☐ P AND A ☐  
CASING/CEMENT JOB ☐  
OTHER: Change well location ☒

13. Describe proposed or completed operations. (Clearly state all pertinent details, and give pertinent dates, including estimated date of starting any proposed work): SEE RULE 19.15.7.14 NMAC. For Multiple Completions: Attach wellbore diagram of proposed completion or recompletion.

SHL location change:

Former location: M 975' FSL & 185' FWL 24-23S-28E

New location: M 543' FSL & 185' FWL 24-23S-28E

C-102 Attached.

Spud Date:

Rig Release Date:

I hereby certify that the information above is true and complete to the best of my knowledge and belief.

SIGNATURE Charlotte Van Valkenburg TITLE Mgr., Regulatory Compliance DATE 1/22/2020

Type or print name Charlotte Van Valkenburg E-mail address: Charlotv@kfoc.net PHONE: 918-491-4314  
For State Use Only

APPROVED BY: Amelia Baranante \*\* TITLE BUSINESS OP. SPEC. DATE 11/09/2020

Conditions of Approval (if any): \*\*updated SHL coordinates in OCD PERMITTING

2/4/20 KS

RECEIVED  
JAN 27 2020  
EMNRD-OCD ARTESIA

District I  
1625 N. French Dr., Hobbs, NM 88240  
Phone: (575) 393-6161 Fax: (575) 393-0720  
District II  
811 S. First St., Artesia, NM 88210  
Phone: (575) 748-1283 Fax: (575) 748-9720  
District III  
1000 Rio Brazos Road, Aztec, NM 87410  
Phone: (505) 334-6178 Fax: (505) 334-6170  
District IV  
1220 S. St. Francis Dr., Santa Fe, NM 87505  
Phone: (505) 476-3460 Fax: (505) 476-3462

State of New Mexico  
Energy, Minerals & Natural Resources Department  
OIL CONSERVATION DIVISION  
1220 South St. Francis Dr.  
Santa Fe, NM 87505

RECEIVED

Form C-102

JAN 27 2020

Revised August 1, 2011

Submit one copy to appropriate

EMNRD-OCD ARTESIA District Office

☐ AMENDED REPORT

WELL LOCATION AND ACREAGE DEDICATION PLAT

<sup>1</sup> API Number 30-015-45683	<sup>2</sup> Pool Code 98220	<sup>3</sup> Pool Name Purple Sage Wolfcamp Gas
<sup>4</sup> Property Code 324955	<sup>5</sup> Property Name BRANTLEY FEE 2419 WC	<sup>6</sup> Well Number 2H
<sup>7</sup> OGRID No. 12361	<sup>8</sup> Operator Name KAISER-FRANCIS OIL COMPANY	<sup>9</sup> Elevation 2995.7

<sup>10</sup> Surface Location

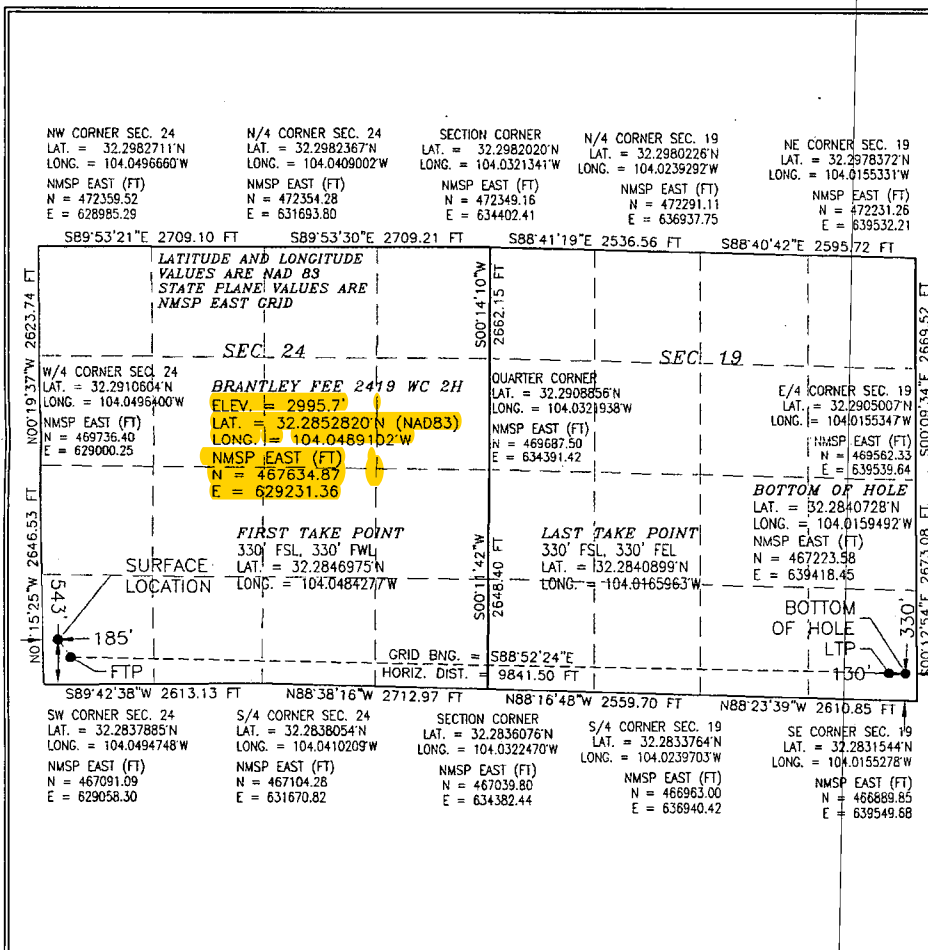
UL or lot no. M	Section 24	Township 23 S	Range 28 E	Lot Idn	Feet from the 543	North/South line SOUTH	Feet from the 185	East/West line WEST	County EDDY
--------------------	---------------	------------------	---------------	---------	----------------------	---------------------------	----------------------	------------------------	----------------

<sup>11</sup> Bottom Hole Location If Different From Surface

UL or lot no. P	Section 19	Township 23 S	Range 29 E	Lot Idn	Feet from the 330	North/South line SOUTH	Feet from the 330	East/West line EAST	County EDDY
--------------------	---------------	------------------	---------------	---------	----------------------	---------------------------	----------------------	------------------------	----------------

<sup>12</sup> Dedicated Acres 320	<sup>13</sup> Joint or Infill	<sup>14</sup> Consolidation Code -	<sup>15</sup> Order No. -
--------------------------------------	-------------------------------	---------------------------------------	------------------------------

No allowable will be assigned to this completion until all interests have been consolidated or a non-standard unit has been approved by the division.



<sup>17</sup> OPERATOR CERTIFICATION

I hereby certify that the information contained herein is true and complete to the best of my knowledge and belief, and that this organization either owns a working interest or unleased mineral interest in the land including the proposed bottom hole location or has a right to drill this well at this location pursuant to a contract with an owner of such a mineral or working interest, or to a voluntary pooling agreement or a compulsory pooling order heretofore entered by the division.

Signature: *Charlotte Van Valkenburg*  
Date: 1/22/2020

Printed Name: Charlotte Van Valkenburg

E-mail Address: Charlottv@kfoc.net

<sup>18</sup> SURVEYOR CERTIFICATION

I hereby certify that the well location shown on this plat was plotted from field notes of actual surveys made by me or under my supervision, and that the same is true and correct to the best of my belief.

JANUARY 15, 2020

Date of Survey

Signature and Seal of Professional Surveyor:

Certificate Number: 12797  
Professional Surveyor No. 6874