

JK

DISTRICT I
1625 N. FRENCH DR., HOBBS, NM 88240
DISTRICT II
1301 W. GRAND AVENUE, ARTESIA, NM 88210
DISTRICT III
1000 RIO BRAZOS RD., AZTEC, NM 87410
DISTRICT IV
11885 S. ST FRANCIS DR., SANTA FE, NM 87505

State of New Mexico
Energy, Minerals & Natural Resources Department
OIL CONSERVATION DIVISION
1220 South St. Francis Dr.
Santa Fe, New Mexico 87505

Form C-102
Revised July 16, 2010
Submit to Appropriate
District Office

AMENDED REPORT

WELL LOCATION AND ACREAGE DEDICATION PLAT

API Number 30-015-39401	Pool Code 22040	Pool Name Empire; ABO
Property Code 309164	Property Name EMPIRE ABO UNIT	Well Number 417
OGRID No 873	Operator Name APACHE CORPORATION	Elevation 3671'

Surface Location

UL or lot No.	Section	Township	Range	Lot Idn	Feet from the	North/South line	Feet from the	East/West line	County
P	36	17-S	27-E		1110	SOUTH	630	EAST	EDDY

Bottom Hole Location If Different From Surface

UL or lot No	Section	Township	Range	Lot Idn	Feet from the	North/South line	Feet from the	East/West line	County

Dedicated Acres	Joint or Infill	Consolidation Code	Order No
40			

NO ALLOWABLE WILL BE ASSIGNED TO THIS COMPLETION UNTIL ALL INTERESTS HAVE BEEN CONSOLIDATED OR A NON-STANDARD UNIT HAS BEEN APPROVED BY THE DIVISION

OPERATOR CERTIFICATION
I hereby certify that the information herein is true and complete to the best of my knowledge and belief, and that this organization either owns a working interest or unleased mineral interest in the land including the proposed bottom hole location or has a right to drill this well at this location pursuant to a contract with an owner of such mineral or working interest, or to a voluntary pooling agreement or a compulsory pooling order heretofore entered by the division.

Sorina L. Flores 5/24/11
Signature Date

Sorina L. Flores
Printed Name

sorina.flores@apachecorp.com
E-mail Address

RECEIVED
MAY 06 2011
NMOCD ARTESIA

GEODETTIC COORDINATES
NAD 27 NME

SURFACE LOCATION
Y=649753 5 N
X=533274 4 E

LAT = 32° 78' 216" N
LONG = 104° 22' 5061" W

LAT = 32° 47' 10" N
LONG = 104° 13' 30" W

○ ← 630'

↑ 1110'

SURVEYOR CERTIFICATION
I hereby certify that the well location shown on this plat was plotted from field notes of actual surveys made by me or under my supervision, and that the same is true and correct to the best of my belief

APRIL 15, 2011

Date of Survey

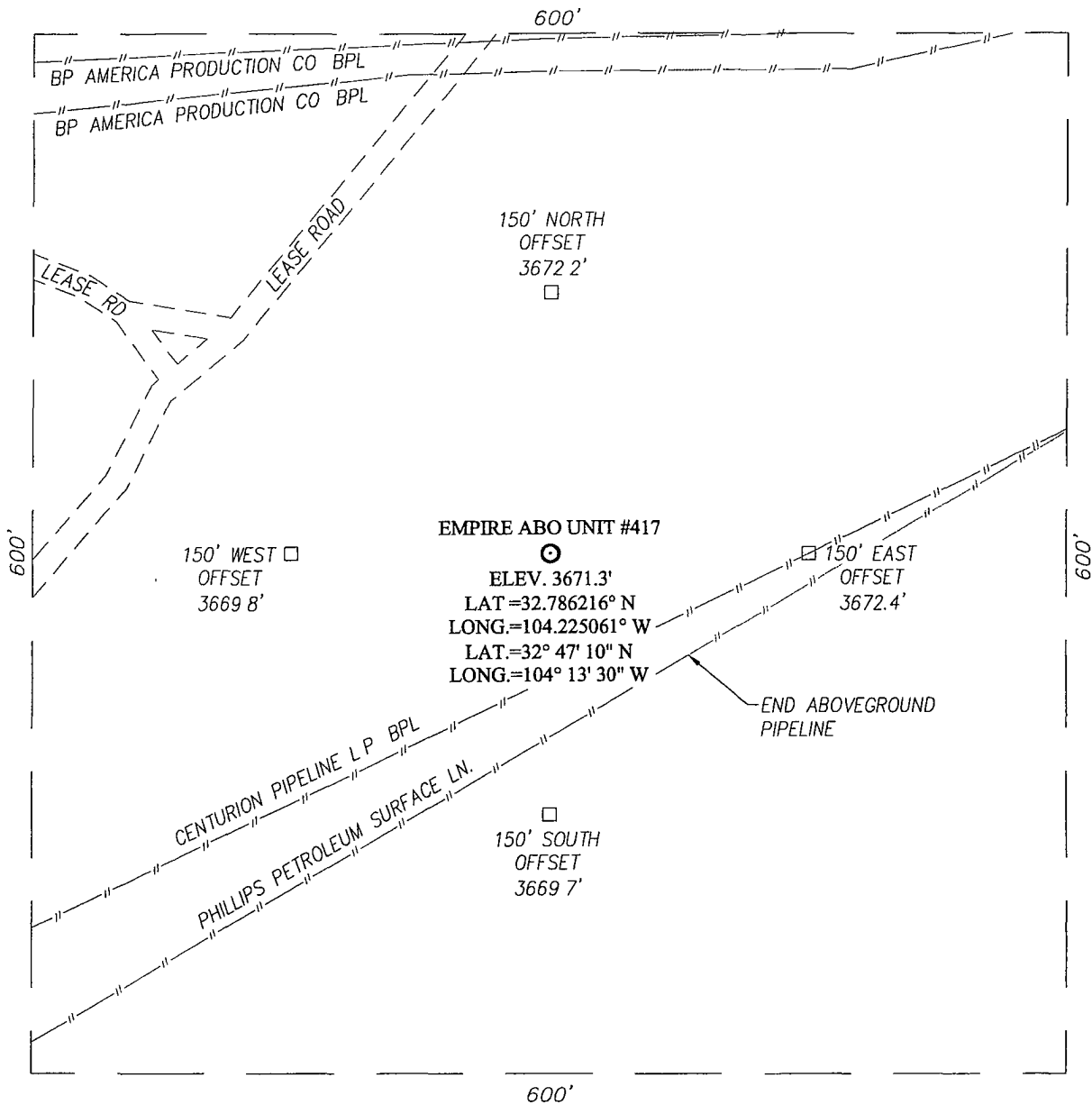
Signature & Seal of Professional Surveyor:

PROFESSIONAL SURVEYOR
NEW MEXICO
3239

Ronald J. Eidson 5/22/2011
Certificate Number Gary G. Eidson 12641
DSS Ronald J. Eidson 3239

DSS JWSC W O 11 11 0839

SECTION 36, TOWNSHIP 17 SOUTH, RANGE 27 EAST, N.M.P.M.
 EDDY COUNTY NEW MEXICO



DIRECTIONS TO LOCATION

FROM THE INTERSECTION OF U.S. HIGHWAY #82 AND CO RD #204 (HILLTOP RD), GO SOUTHEAST ON CO RD. #204 APPROX 1.9 MILES TURN RIGHT AND GO WEST APPROX. 0.1 MILE THIS LOCATION STAKE IS APPROX 250 FEET SOUTH OF LEASE ROAD

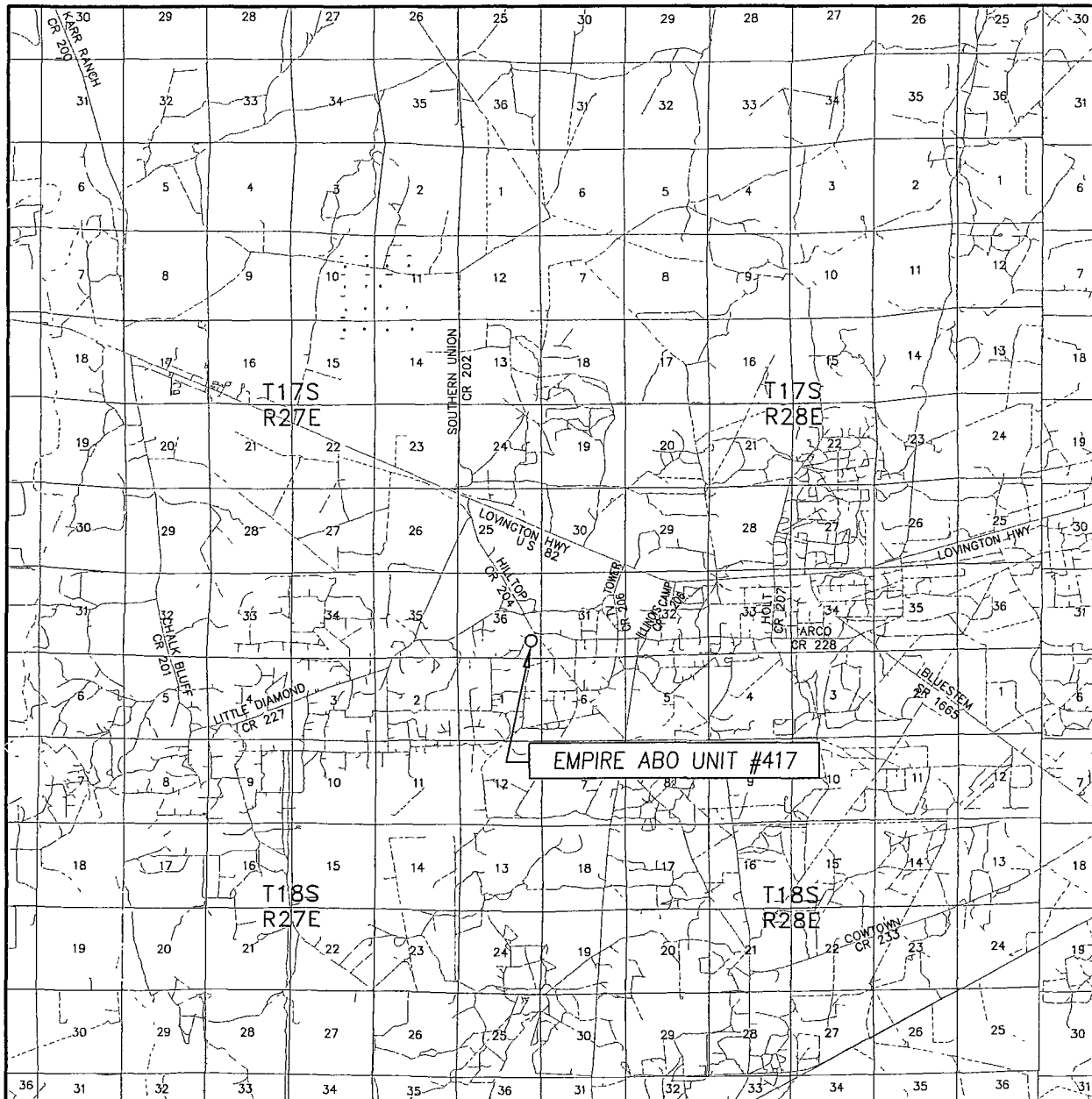
PROVIDING SURVEYING SERVICES SINCE 1946
JOHN WEST SURVEYING COMPANY
 412 N DAL PASO
 HOBBS, N.M 88240
 (575) 393-3117

APACHE CORPORATION

EMPIRE ABO UNIT #417 WELL
 LOCATED 1110 FEET FROM THE SOUTH LINE
 AND 630 FEET FROM THE EAST LINE OF SECTION 36,
 TOWNSHIP 17 SOUTH, RANGE 27 EAST, N.M.P.M.,
 EDDY COUNTY, NEW MEXICO


Survey Date 4/15/11	Sheet 1 of 1 Sheets
WO Number 11 11.0839	Dr. By. DSS
Date 4/29/11	Rel WO
11110839	Scale: 1"=100'

VICINITY MAP



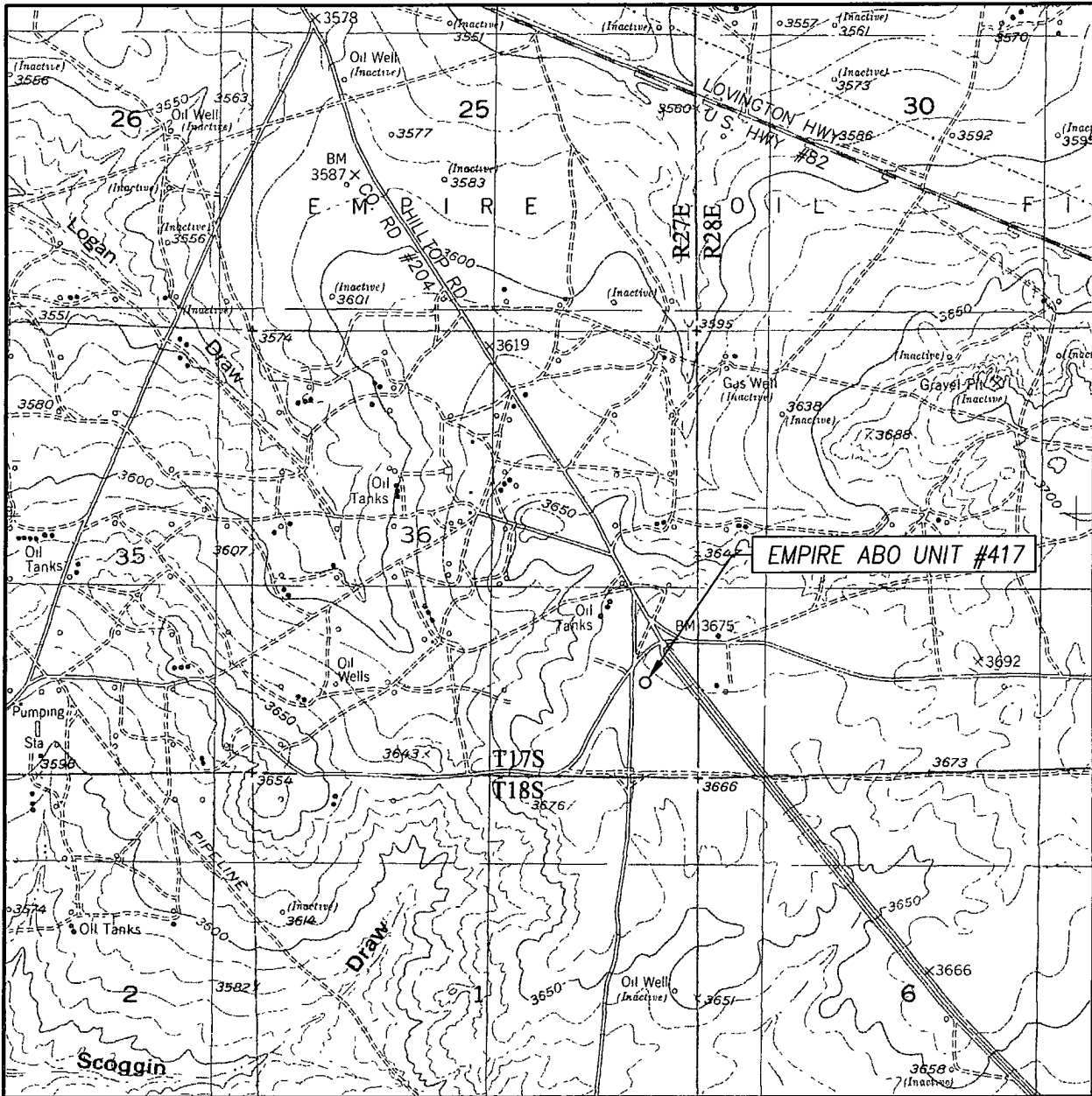
SCALE. 1" = 2 MILES

SEC. 36 TWP. 17-S RGE. 27-E
 SURVEY _____ N M P M _____
 COUNTY EDDY STATE NEW MEXICO
 DESCRIPTION 1110' FSL & 630' FEL
 ELEVATION 3671'
 OPERATOR APACHE CORPORATION
 LEASE EMPIRE ABO UNIT



PROVIDING SURVEYING SERVICES
 SINCE 1946
JOHN WEST SURVEYING COMPANY
 412 N DAL PASO
 HOBBS, N M 88240
 (575) 393-3117

LOCATION VERIFICATION MAP



SCALE: 1" = 2000'

CONTOUR INTERVAL:
RED LAKE, N.M. - 10'

SEC. 36 TWP. 17-S RGE. 27-E

SURVEY N.M.P.M.

COUNTY EDDY STATE NEW MEXICO


DESCRIPTION 1110' FSL & 630' FEL

ELEVATION 3671'

OPERATOR APACHE CORPORATION

LEASE EMPIRE ABO UNIT

U.S.G.S TOPOGRAPHIC MAP
RED LAKE, N M



PROVIDING SURVEYING SERVICES
 SINCE 1946
JOHN WEST SURVEYING COMPANY
 412 N. DAL PASO
 HOBBS, N.M. 88240
 (575) 393-3117