

Submit To Appropriate District Office  
Two Copies  
District I  
1625 N. French Dr., Hobbs, NM 88240  
District II  
811 S. First St., Artesia, NM 88210  
District III  
1600 Rio Brazos Rd., Aztec, NM 87410  
District IV  
1220 S. St. Francis Dr., Santa Fe, NM 87505

State of New Mexico  
Energy, Minerals and Natural Resources

Oil Conservation Division  
1220 South St. Francis Dr.  
Santa Fe, NM 87505

Form C-105  
Revised August 1, 2011

1. WELL API NO.  
015-32190  
2. Type of Lease  
XX STATE  IFF  FEDERAL INDIAN  
3. State Oil & Gas Lease No. 193805 South Carlsbad

WELL COMPLETION OR RECOMPLETION REPORT AND LOG

4. Reason for filing:  
XX COMPLETION REPORT (Fill in boxes #1 through #31 for State and Fee wells only)  
 C-144 CLOSURE ATTACHMENT (Fill in boxes #1 through #9, #15 Date Rig Released and #32 and/or #33, attach this and the plat to the C-144 closure report in accordance with 19.15.17.13.K NMAC)

5. Lease Name or Unit Agreement Name  
South Carlsbad  
6. Well Number: #6

7. Type of Completion:  
 NEW WELL  WORKOVER  DEEPLINING  PLUGBACK  DIFFERENT RESERVOIR  OTHER

8. Name of Operator:  
Newfield Exploration Mid-Con Inc

9. OGRID

10. Address of Operator  
110 West 7th St. Suite 1300 Tulsa, OK 74119

11. Pool name or Wildcat  
Bone Springs

12. Location	Unit Ltr	Section	Township	Range	Lot	Feet from the	N/S Line	Feet from the	E/W Line	County
Surface:	J	27	23S	26E		1976	N	1455	W	Eddy
BH:										

13. Date Spudded 03/09/02 14. Date T.D. Reached 04/15/02 15. Date Rig Released 04/15/02 16. Date Completed (Ready to Produce) 05/23/02 17. Elevations (DI and RKB, RT, GR, etc.) 3265

18. Total Measured Depth of Well 11,990 19. Plug Back Measured Depth 5934 20. Was Directional Survey Made? 21. Type Electric and Other Logs Run

22. Producing Interval(s), of this completion - Top, Bottom, Name  
Bone Springs

CASING RECORD (Report all strings set in well)

CASING SIZE	WEIGHT LB/FT.	DEPTH SET	HOIF SIZE	CEMENTING RECORD	AMOUNT PULLED
13 3/8	48#	515'	17 1/2	Surf	
9 5/8	40#	2025'	12 1/4	Surf	
5 1/2	17#	11990'	8 3/4	Surf	

24. LINER RECORD				25. TUBING RECORD			
SIZE	TOP	BOTTOM	SACKS CEMENT	SCREEN	SIZE	DEPTH SET	PACKER SET

26. Perforation record (interval, size, and number)  
5820 - 5870' 2 SPIF 60% phased

27. ACID, SHOT, FRACTURE, CEMENT, SQUEEZE, ETC.  
DEPTH INTERVAL AMOUNT AND KIND MATERIAL USED  
5820-5870 Frac > 95,680 lb 20/40  
Ottawa Sand

PRODUCTION

28. Date First Production n/a Production Method (Flowing, gas lift pumping - Size and type pump) Flowing Well Status (Prod. or Shut-in) SI

Date of Test	Hours Tested	Choke Size	Prod'n For Test Period	Oil - Bbl	Gas - MCF	Water - Bbl	Gas - Oil Ratio
12/12/09	8	2"		0	277	0	
Flow Tubing Press	Casing Pressure	Calculated 24-Hour Rate	Oil - Bbl	Gas - MCF	Water - Bbl	Oil Gravity - API - (Corr.)	
80#	0		0	277	0		

29. Disposition of Gas (Sold, used for fuel, vented, etc.) 30. Test Witnessed By

31. List Attachments

32. If a temporary pit was used at the well, attach a plat with the location of the temporary pit

33. If an on-site burial was used at the well, report the exact location of the on-site burial

Latitude Longitude NAD 1927 1983

I hereby certify that the information shown on both sides of this form is true and complete to the best of my knowledge and belief

Signature Name James B. Lollar Title Operations Engineer Date  
E-mail Address

*Send to Veeber*

<b>Well Name:</b> Carlsbad 6		<b>Spud Date:</b>		<b>Location:</b> Sec 27 235-261.	
<b>County:</b> Eddy		<b>Comp Date:</b>		<b>Field:</b> Permian	
<b>State:</b> NM		<b>API #:</b> 30-015-32190		<b>Formation:</b> Bone Springs	
<b>Prospect:</b>		<b>State ID #:</b>		<b>Permit #:</b> <b>Date Appr:</b>	
<b>TD:</b> 11,990'		<b>PBTD:</b> 5,965'		<b>Flev:</b> KB 3320', GI: 3301'	
				<b>KB Perm Dat</b> 19' t Abv GL	

Pipe Record								Cement & Hole Data				
Csg	OD	Grade	THD	Wt/Ft	Top	Bot	# Jts	Hole Size	Sacks	Class	Slurry	TOC
Surf	13 3/8	11.40		48.00#	Surf	515'			457			
Int	9 5/8	J-55		40.00#	Surf	2,025'			510			
Prod	5 1/2	HCP-110		17.00#	Surf	11,989'			1920			9.030
DV Tool						7,007			2nd Stage Cement			4.666
Tbg	2 7/8	N-80	CUH	6.50#	0	5,754'	176					

**12-3-09:** MIRU Basic W/O rig, Tubing Stuck 25% Free at 8,000', 50% Free @ 6,250', Jet cut 2 1/8" Production tubing at 6,257', POOH, SET CIBP at 6,000' and Dump Bailed 35' of cement, PBTD @ 5,960'

**12-4-09:** Tested Casing and CIBP to 5,000 psi, OK, Perforated the Bone Spring Interval 5,820' - 5,870' 2 Jspf 60" Phased 100 Holes

**12-5-09:** RIH w/ 2 7/8" Tubing and AS 1X Packer and set at 5,737', Swabbed in No show of oil or gas

**12-6-09:** Broke down the Bone Spring interval 5,820- 5,870 broke at 2 BPM at 2,300 psi, Pumped a total of 50 bbls 2% KCl, swabbed down, light show of Gas 12 7 09 SITP 380 psi, H2S 150 ppm +, Released Packer and POOH, NU Stack prep to Frac 12-9-09

**12-9-09:** Frac the Bone Spring interval down 5 1/2" Casing with 302 bbls 30# gel FFT, 714 bbl X-link pad and 619 bbl prop laden X-link from 2 ppg - 5 ppg, didnot pump 6 ppg sand stage flushed with 135 bbls 20# gel Pre ISIP 1,023 psi, 0.61 frac gradient, post job ISIP 4,733 psi 1.24 frac gradient 3,710 psi net gain, pumped a total clean fluid of 1,770 bbls 97% of design and 95,680 lb 20/40 ottawa 78% of design AIR 50.2, MIR 50.5, AIP 2,350 psi, MIP 5,200 psi

**12-12-09:** RIH with 2 7/8" production tubing w/ 7% H2S concentration, Tag Fill at 5,870'

**12-13-09:** Washed sand down to 5,934' Hung off at 5,754'

Capacities: (Bbl/Ft) (Ft/Ft)			
<b>Fbg:</b>			
<b>Csg:</b>			
<b>PCsg:</b>			
<b>ICsg:</b>		01550	0.0872
<b>SCsg:</b>		07580	0.4257
<b>Liner:</b>			

Volume Between: (Bbl/Ft) (Ft/Ft)			
<b>Tbg x Csg:</b>			
<b>Tbg x Csg:</b>			
<b>PCsg x SCsg:</b>		0758	4257
<b>ICsg x OH:</b>			
<b>SCsg x OH:</b>		0558	3142
<b>PCsg x OH:</b>		0547	3071

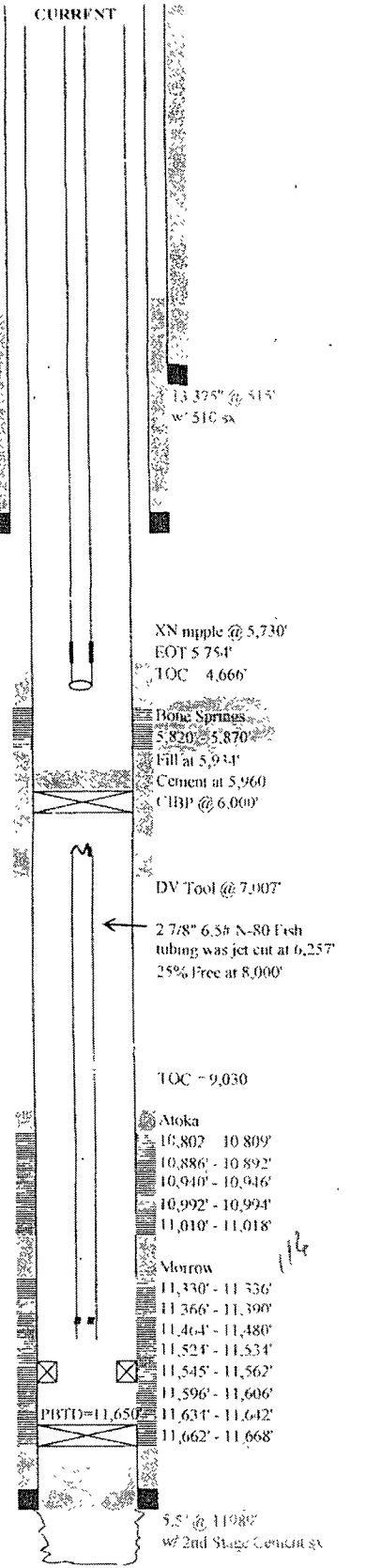
Perforation Record			
Date	Top	Bot	Status
	10,802'	10,802'	Atoka
	10,886'	10,892'	Atoka
	10,940'	10,946'	Atoka
	10,992'	10,994'	Morrow
	11,010'	11,018'	Morrow
	11,330'	11,336'	Morrow
	11,366'	11,390'	Morrow
	11,524'	11,534'	Morrow
	11,545'	11,562'	Morrow (NP)
	11,596'	11,606'	Morrow
	11,631'	11,642'	Morrow
	11,662'	11,668'	Morrow (NP)

<b>WT%:</b>	
<b>Zone/Penalty:</b>	
<b>Offset/Zone:</b>	
<b>Force Pool Acreage:</b>	<b>Competitive:</b>
<b>BIF:</b> <b>WHSIP:</b>	<b>BIIP:</b>
<b>Logs:</b>	
<b>Landman:</b>	<b>Geologist:</b>
<b>Status:</b>	<b>Objective:</b>
<b>Formations &amp; depths:</b>	

TUBULAR GOODS PERFORMANCE				
Material	Tensile* (lbs)	Burst* (lbs)	Collapse* (lbs)	ID (in)
2 7/8" 6.5# N-80				
3 1/2" 17# HCP-110				
4 1/2" 20# N-80				

\* Safety factor Not Included

**Tubing Details 12-13-09:** 175-joints 2 7/8" 6.5# L-80 tubing, XN Nipple 2.313 I.D. 2.205 no-go, 1-joint 2 7/8" 6.5# L-80 tubing and top section of disconnect sub, EOT 5,754'



Prepared By: D. Wade  
Date:  
Updated: 12/13/09

Engineer:  
Office:  
Fax:

*Spike Fales*

*580-243-9375*

*ELK City*

*Newfield Contact*