

District I
1625 N. French Dr., Hobbs, NM 88240
District II
1301 W Grand Avenue, Artesia, NM 88210
District III
1000 Rio Brazos Rd., Aztec, NM 87410
District IV
1220 S. St. Francis Dr., Santa Fe, NM 87505

State of New Mexico
Energy, Minerals & Natural Resources Department
OIL CONSERVATION DIVISION
1220 South St. Francis Dr.
Santa Fe, NM 87505

Form C-102
Revised October 15, 2009
Submit one copy to appropriate
District Office
 AMENDED REPORT

WELL LOCATION AND ACREAGE DEDICATION PLAT

¹ API Number 30-015-39517		² Pool Code 13370		³ Pool Name BRUSHY CANYON; DELAWARE	
⁴ Property Code 300635		⁵ Property Name COTTON DRAW UNIT			⁶ Well Number 113H
⁷ OGRID No. 6137		⁸ Operator Name DEVON ENERGY PRODUCTION COMPANY, L.P.			⁹ Elevation 3472.2

¹⁰ Surface Location

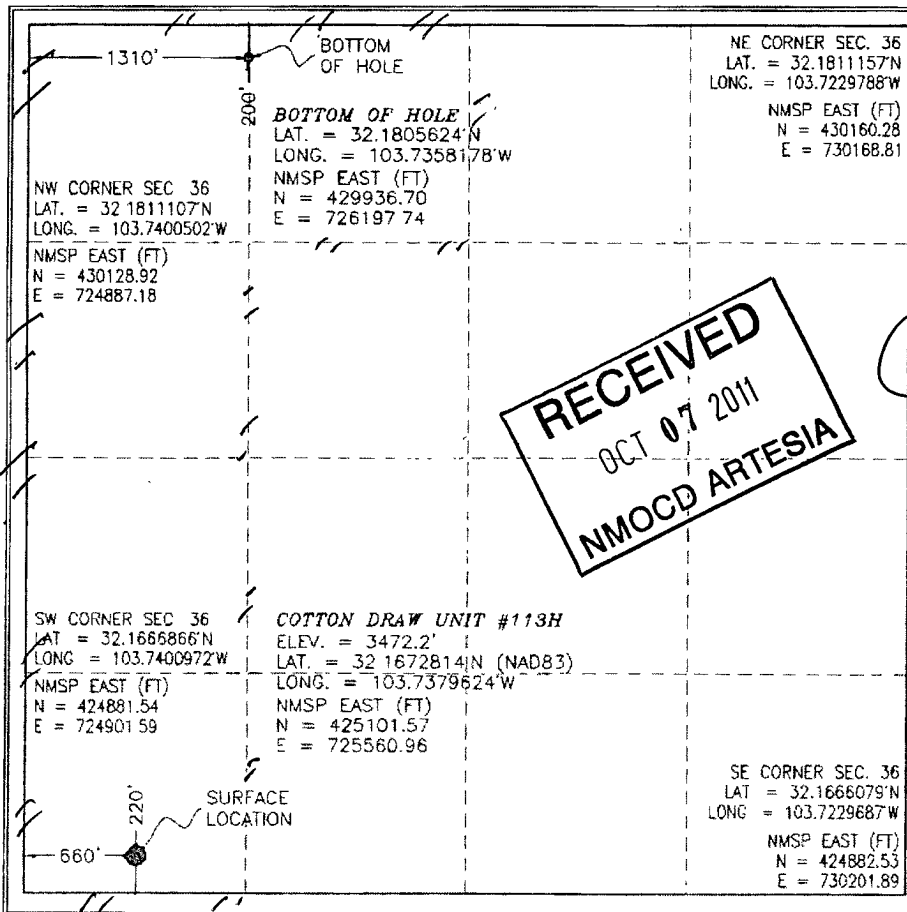
UL or lot no.	Section	Township	Range	Lot Idn	Feet from the	North/South line	Feet from the	East/West line	County
M	36	24 S	31 E		220	SOUTH	660	WEST	EDDY

¹¹ Bottom Hole Location If Different From Surface

UL or lot no.	Section	Township	Range	Lot Idn	Feet from the	North/South line	Feet from the	East/West line	County
D	36	24 S	31 E		200	NORTH	1310	WEST	EDDY

¹² Dedicated Acres 200	¹³ Joint or Infill	¹⁴ Consolidation Code	¹⁵ Order No.
---	-------------------------------	----------------------------------	-------------------------

No allowable will be assigned to this completion until all interests have been consolidated or a non-standard unit has been approved by the division.



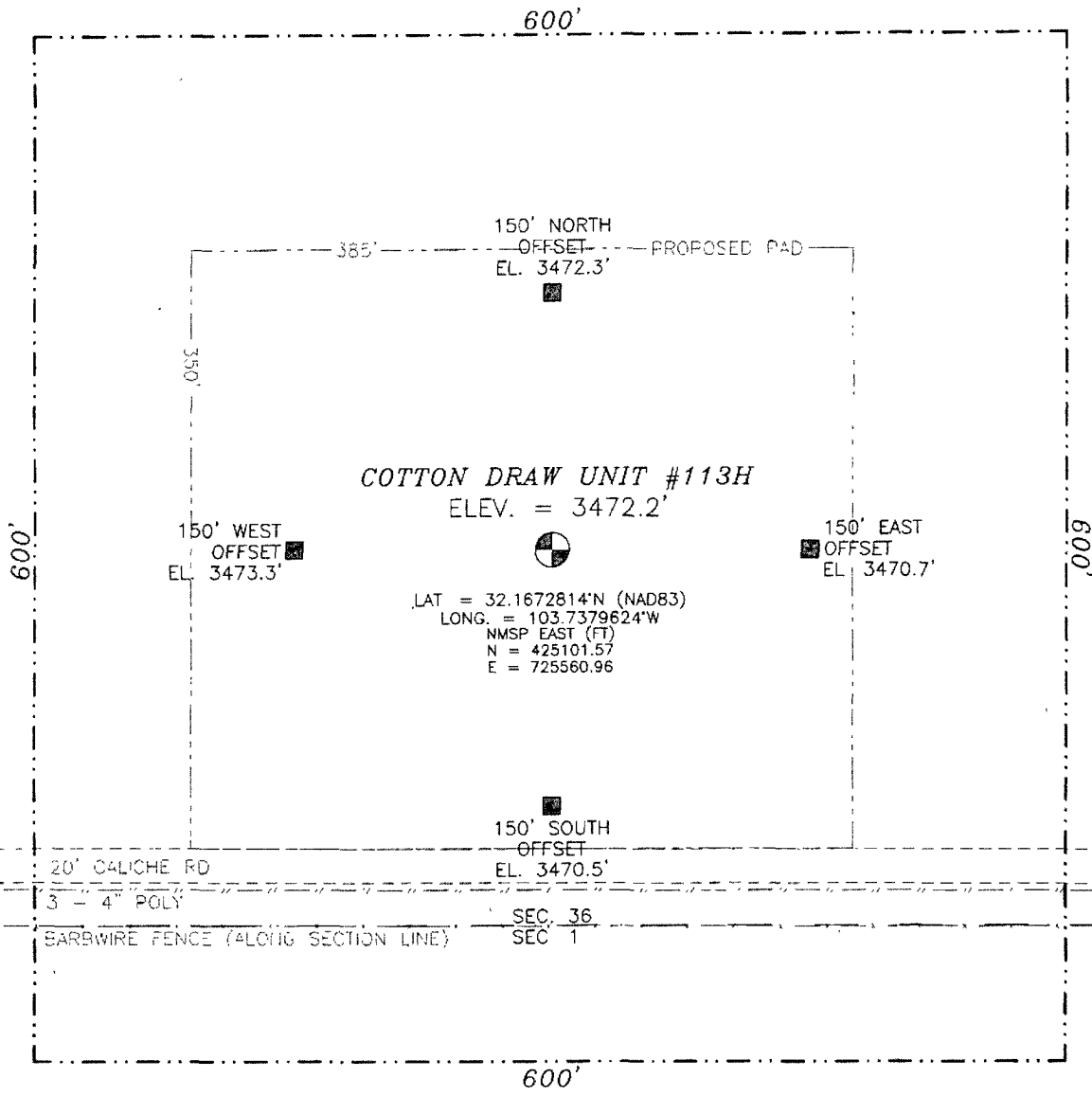
17 OPERATOR CERTIFICATION
I hereby certify that the information contained herein is true and complete to the best of my knowledge and belief, and that this organization either owns a working interest or unleased mineral interest in the land including the proposed bottom hole location or has a right to drill this well at this location pursuant to a contract with an owner of such a mineral or working interest, or to a voluntary pooling agreement or a compulsory pooling order heretofore entered by the division.

Signature: *Judy A. Barnett* Date: **10/5/11**
Printed Name: **Judy A. Barnett Regulatory Specialist**

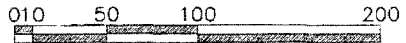
18 SURVEYOR CERTIFICATION
I hereby certify that the well location shown on this plat was plotted from field notes of actual surveys made by me or under my supervision, and that the same is true and correct to the best of my knowledge and belief.

Date of Survey: **SEPTEMBER 2011**
Signature and Seal of Professional Surveyor: *[Signature]*
Certificate Number: **PLUMON E. JARA WILCO. PLS 12797**
SURVEY NO 585A

SECTION 36, TOWNSHIP 24 SOUTH, RANGE 31 EAST, N.M.P.M.
 EDDY COUNTY, STATE OF NEW MEXICO



LAT = 32.1672814°N (NAD83)
 LONG. = 103.7379624°W
 NMSP EAST (FT)
 N = 425101.57
 E = 725560.96



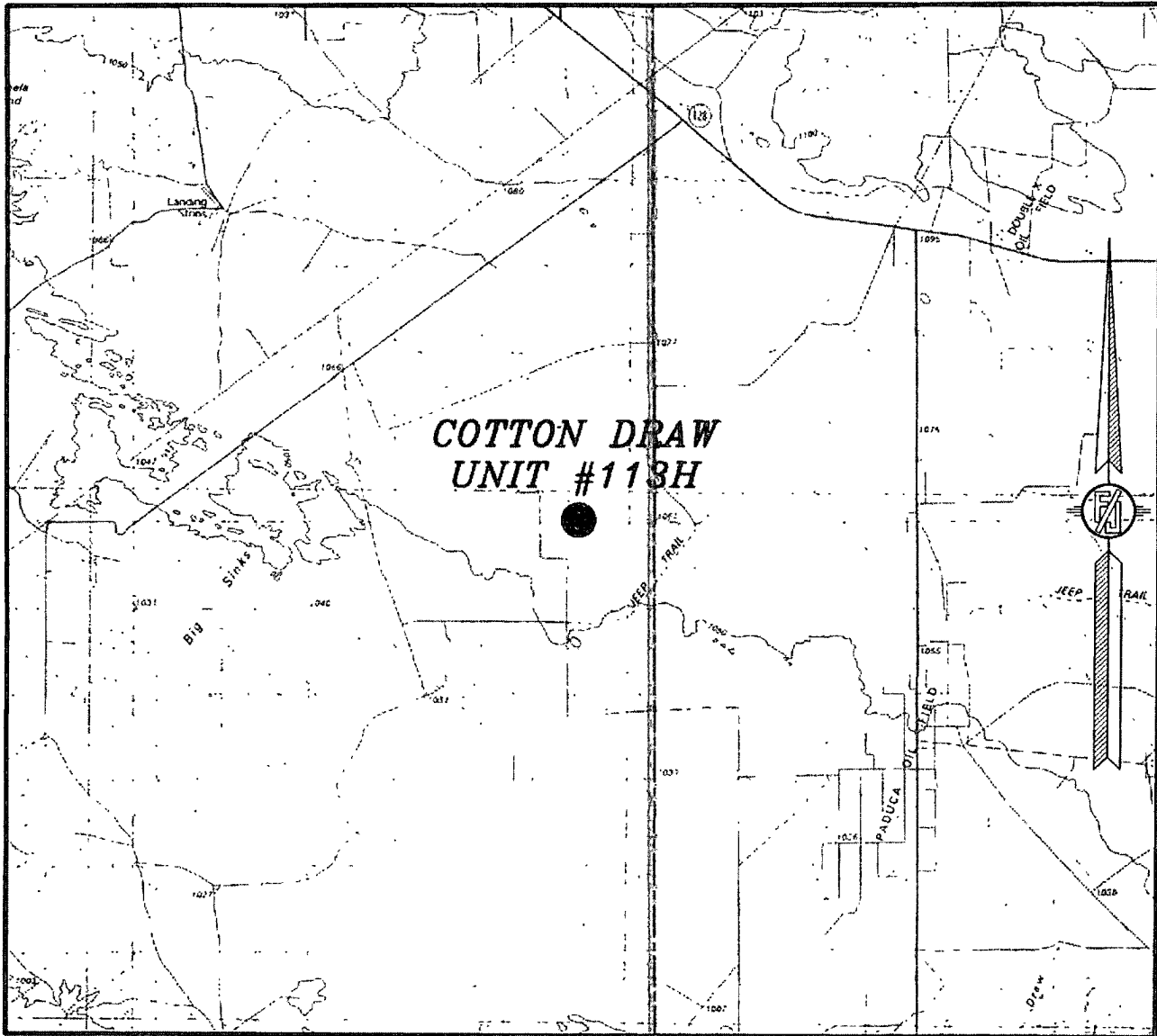
SCALE 1" = 100'
DIRECTIONS TO LOCATION
 FROM STATE HWY 128 AND PAVED CR#1 (ORLA RD) GO SOUTH ON
 CR #1 6.0 MILES, TURN RIGHT ON CALICHE LEASE ROAD (MONSANTO
 RD.) AND GO WEST 2.0 MILES, TURN RIGHT AND GO NORTH 1.0
 MILES, BEND LEFT AND GO WEST 2.0 MILES, BEND RIGHT AND GO
 NORTH 1.7 MILES, BEND LEFT AND GO WEST 0.3 MILES, TURN RIGHT
 AND GO NORTH 0.45 MILES, TURN RIGHT AND GO EAST 0.45 MILES,
 AND LOCATION IS ON THE LEFT (NORTH) 185'.

DEVON ENERGY PRODUCTION COMPANY, L.P.
COTTON DRAW UNIT #113H
 LOCATED 220 FT. FROM THE SOUTH LINE
 AND 660 FT. FROM THE WEST LINE OF
 SECTION 36, TOWNSHIP 24 SOUTH,
 RANGE 31 EAST, N.M.P.M.
 EDDY COUNTY, STATE OF NEW MEXICO

SEPTEMBER 8, 2011

SURVEY NO. 585A
 MADRON SURVEYING, INC. 35' SOUTH CANAL CARLSBAD, NEW MEXICO
(575) 887-5836

SECTION 36, TOWNSHIP 24 SOUTH, RANGE 31 EAST, N.M.P.M.
EDDY COUNTY, STATE OF NEW MEXICO
VICINITY MAP



NOT TO SCALE

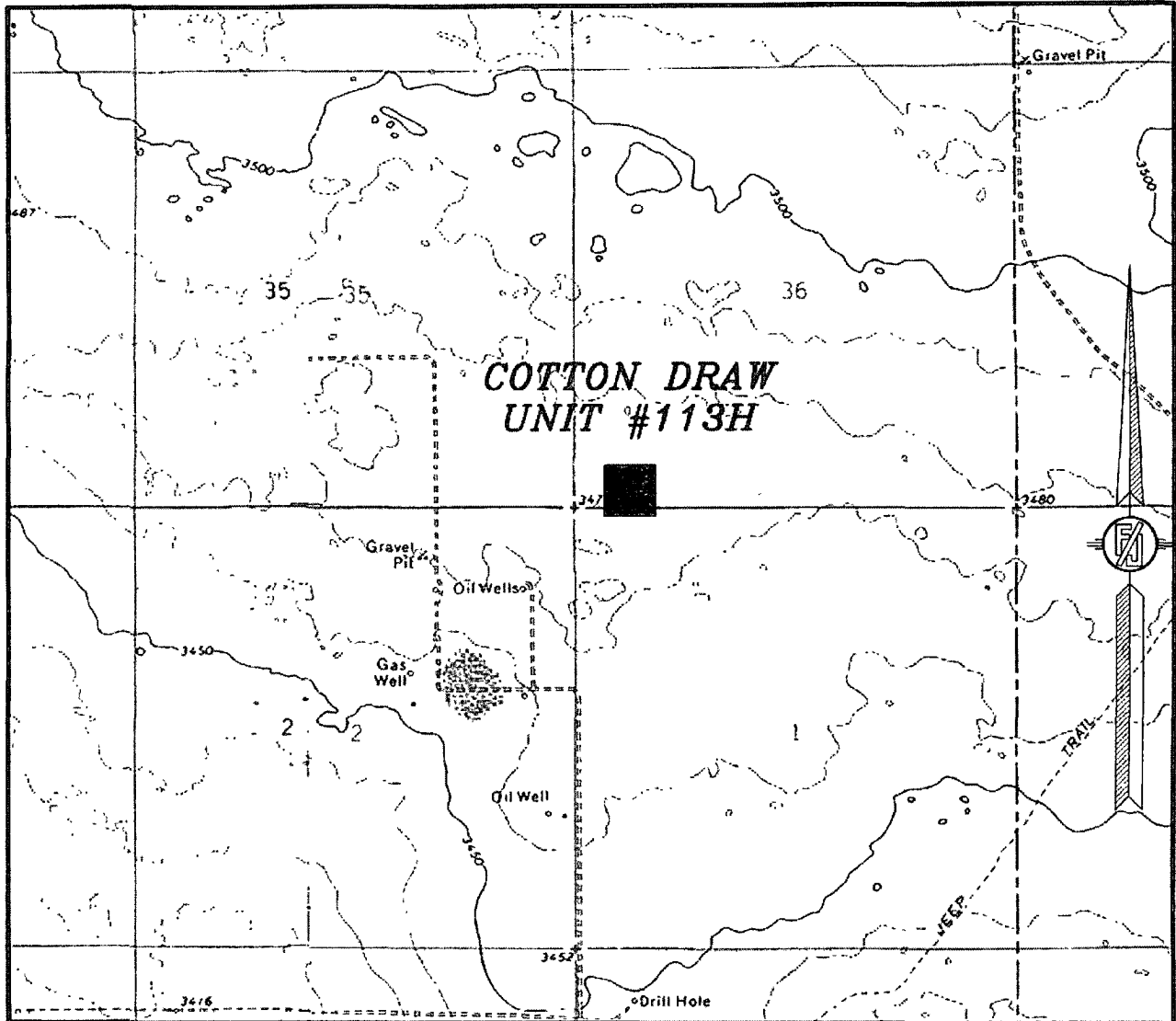
DEVON ENERGY PRODUCTION COMPANY, L.P.
COTTON DRAW UNIT #113H
LOCATED 220 FT. FROM THE SOUTH LINE
AND 660 FT. FROM THE WEST LINE OF
SECTION 36, TOWNSHIP 24 SOUTH,
RANGE 31 EAST, N.M.P.M.
EDDY COUNTY, STATE OF NEW MEXICO

SEPTEMBER 8, 2011

SURVEY NO. 585A

MADRON SURVEYING, INC. 301 SOUTH CANAL CARLSBAD, NEW MEXICO
(575) 887-5850

SECTION 36, TOWNSHIP 24 SOUTH, RANGE 31 EAST, N.M.P.M.
 EDDY COUNTY, STATE OF NEW MEXICO
 LOCATION VERIFICATION MAP



CONTOUR INTERVAL:
 PADUCA BREAKS, NW

NOT TO SCALE

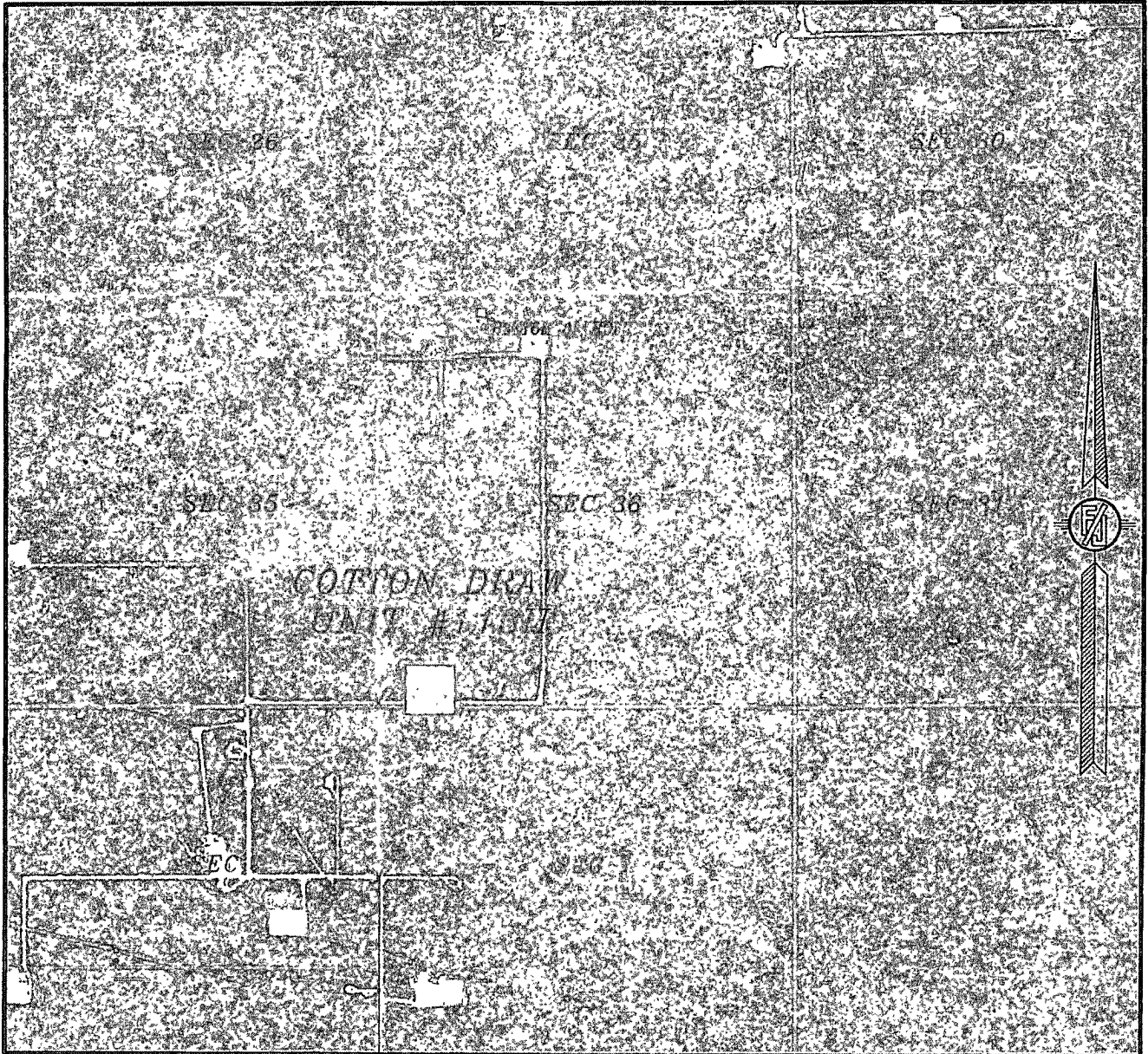
DEVON ENERGY PRODUCTION COMPANY, L.P.
 COTTON DRAW UNIT #113H
 LOCATED 220 FT. FROM THE SOUTH LINE
 AND 660 FT. FROM THE WEST LINE OF
 SECTION 36, TOWNSHIP 24 SOUTH,
 RANGE 31 EAST, N.M.P.M.
 EDDY COUNTY, STATE OF NEW MEXICO

SEPTEMBER 8, 2011

SURVEY NO. 585A

MADRON SURVEYING, INC. 3011 SOUTH CANAL CARLSBAD, NEW MEXICO
 (575) 887-5830

SECTION 36, TOWNSHIP 24 SOUTH, RANGE 31 EAST, N.M.P.M.
EDDY COUNTY, STATE OF NEW MEXICO
AERIAL PHOTO



NOT TO SCALE
AERIAL PHOTO:
GOOGLE EARTH
USDA - AUG, 2009

DEVON ENERGY PRODUCTION COMPANY, L.P.
COTTON DRAW UNIT #113H
LOCATED 220 FT. FROM THE SOUTH LINE
AND 660 FT. FROM THE WEST LINE OF
SECTION 36, TOWNSHIP 24 SOUTH,
RANGE 31 EAST, N.M.P.M.
EDDY COUNTY, STATE OF NEW MEXICO

SEPTEMBER 8, 2011

SURVEY NO. 585A

MADRON SURVEYING, INC. CARLSBAD, NEW MEXICO

301 SOUTH CANAL
(575) 887-5850