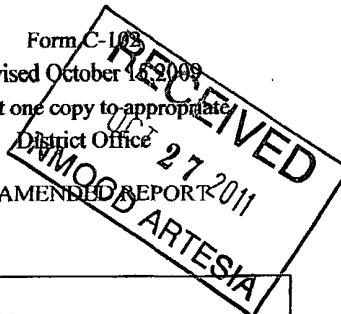


District I
1625 N. French Dr., Hobbs, NM 88240
District II
1301 W. Grand Avenue, Artesia, NM 88210
District III
1000 Rio Brazos Rd., Aztec, NM 87410
District IV
1220 S. St. Francis Dr., Santa Fe, NM 87505

State of New Mexico
Energy, Minerals & Natural Resources Department
OIL CONSERVATION DIVISION
1220 South St. Francis Dr.
Santa Fe, NM 87505

Form C-103
Revised October 16, 2009
Submit one copy to appropriate
District Office
☐ AMENDED REPORT



WELL LOCATION AND ACREAGE DEDICATION PLAT

¹ API Number 30-019-39542	² Pool Code 96053	³ Pool Name WC; Bone Spring
⁴ Property Code 38882	⁵ Property Name COPPERHEAD "30" FEE	⁶ Well Number 1H
⁷ OGRID No. 217955	⁸ Operator Name OGX RESOURCES, LLC	⁹ Elevation 2947.9

¹⁰ Surface Location

UL or lot no.	Section	Township	Range	Lot Idn	Feet from the	North/South line	Feet from the	East/West line	County
A	30	26 S	29 E		480	NORTH	480	EAST	EDDY

¹¹ Bottom Hole Location If Different From Surface

UL or lot no.	Section	Township	Range	Lot Idn	Feet from the	North/South line	Feet from the	East/West line	County
D	30	26 S	29 E		330	NORTH	330	WEST	EDDY

¹² Dedicated Acres 160	¹³ Joint or Infill	¹⁴ Consolidation Code	¹⁵ Order No.
---	-------------------------------	----------------------------------	-------------------------

No allowable will be assigned to this completion until all interests have been consolidated or a non-standard unit has been approved by the division.

<p>17 OPERATOR CERTIFICATION I hereby certify that the information contained herein is true and complete to the best of my knowledge and belief, and that this organization either owns a working interest or unleased mineral interest in the land including the proposed bottom hole location or has a right to drill this well at this location pursuant to a contract with an owner of such a mineral or working interest, or to a voluntary pooling agreement or a compulsory pooling order heretofore entered by the division.</p> <p><i>Signed electronically</i> Signature: _____ Date: 10/26/11 Printed Name: _____</p>	
<p>18 SURVEYOR CERTIFICATION I hereby certify that the well location shown on this plat was plotted from field notes of actual surveys made by me or under my supervision, and that the same is true and correct to the best of my belief.</p> <p>OCTOBER 18, 2011 Date of Survey: _____ Signature and Seal of Professional Surveyor: <i>[Signature]</i> Certificate Number: FILIMON F. JARAMILLO, PLS 12797 SURVEY NO. 659</p>	

<p>LOT 1 NW CORNER SEC. 30 LAT. = 32°01'15.477"N LONG. = 104°01'55.839"W</p>	<p>LOT 2</p>	<p>LOT 3 W Q CORNER SEC. 30 LAT. = 32°00'49.580"N LONG. = 104°01'55.854"W</p>	<p>LOT 4 SW CORNER SEC. 30 LAT. = 32°00'24.056"N LONG. = 104°01'57.437"W</p>
---	---------------------	--	---

<p>LOT 1 BOTTOM OF HOLE LAT. = 32°01'12.185"N LONG. = 104°01'52.008"W</p>	<p>LOT 2</p>	<p>LOT 3</p>	<p>LOT 4</p>
--	---------------------	---------------------	---------------------

<p>LOT 1 NW CORNER SEC. 30 LAT. = 32°01'15.477"N LONG. = 104°01'55.839"W</p>	<p>LOT 2</p>	<p>LOT 3 W Q CORNER SEC. 30 LAT. = 32°00'49.580"N LONG. = 104°01'55.854"W</p>	<p>LOT 4 SW CORNER SEC. 30 LAT. = 32°00'24.056"N LONG. = 104°01'57.437"W</p>
---	---------------------	--	---

<p>LOT 1 NW CORNER SEC. 30 LAT. = 32°01'15.477"N LONG. = 104°01'55.839"W</p>	<p>LOT 2</p>	<p>LOT 3 W Q CORNER SEC. 30 LAT. = 32°00'49.580"N LONG. = 104°01'55.854"W</p>	<p>LOT 4 SW CORNER SEC. 30 LAT. = 32°00'24.056"N LONG. = 104°01'57.437"W</p>
---	---------------------	--	---

<p>LOT 1 NW CORNER SEC. 30 LAT. = 32°01'15.477"N LONG. = 104°01'55.839"W</p>	<p>LOT 2</p>	<p>LOT 3 W Q CORNER SEC. 30 LAT. = 32°00'49.580"N LONG. = 104°01'55.854"W</p>	<p>LOT 4 SW CORNER SEC. 30 LAT. = 32°00'24.056"N LONG. = 104°01'57.437"W</p>
---	---------------------	--	---

<p>LOT 1 NW CORNER SEC. 30 LAT. = 32°01'15.477"N LONG. = 104°01'55.839"W</p>	<p>LOT 2</p>	<p>LOT 3 W Q CORNER SEC. 30 LAT. = 32°00'49.580"N LONG. = 104°01'55.854"W</p>	<p>LOT 4 SW CORNER SEC. 30 LAT. = 32°00'24.056"N LONG. = 104°01'57.437"W</p>
---	---------------------	--	---

<p>LOT 1 NW CORNER SEC. 30 LAT. = 32°01'15.477"N LONG. = 104°01'55.839"W</p>	<p>LOT 2</p>	<p>LOT 3 W Q CORNER SEC. 30 LAT. = 32°00'49.580"N LONG. = 104°01'55.854"W</p>	<p>LOT 4 SW CORNER SEC. 30 LAT. = 32°00'24.056"N LONG. = 104°01'57.437"W</p>
---	---------------------	--	---

<p>LOT 1 NW CORNER SEC. 30 LAT. = 32°01'15.477"N LONG. = 104°01'55.839"W</p>	<p>LOT 2</p>	<p>LOT 3 W Q CORNER SEC. 30 LAT. = 32°00'49.580"N LONG. = 104°01'55.854"W</p>	<p>LOT 4 SW CORNER SEC. 30 LAT. = 32°00'24.056"N LONG. = 104°01'57.437"W</p>
---	---------------------	--	---

<p>LOT 1 NW CORNER SEC. 30 LAT. = 32°01'15.477"N LONG. = 104°01'55.839"W</p>	<p>LOT 2</p>	<p>LOT 3 W Q CORNER SEC. 30 LAT. = 32°00'49.580"N LONG. = 104°01'55.854"W</p>	<p>LOT 4 SW CORNER SEC. 30 LAT. = 32°00'24.056"N LONG. = 104°01'57.437"W</p>
---	---------------------	--	---

<p>LOT 1 NW CORNER SEC. 30 LAT. = 32°01'15.477"N LONG. = 104°01'55.839"W</p>	<p>LOT 2</p>	<p>LOT 3 W Q CORNER SEC. 30 LAT. = 32°00'49.580"N LONG. = 104°01'55.854"W</p>	<p>LOT 4 SW CORNER SEC. 30 LAT. = 32°00'24.056"N LONG. = 104°01'57.437"W</p>
---	---------------------	--	---

<p>LOT 1 NW CORNER SEC. 30 LAT. = 32°01'15.477"N LONG. = 104°01'55.839"W</p>	<p>LOT 2</p>	<p>LOT 3 W Q CORNER SEC. 30 LAT. = 32°00'49.580"N LONG. = 104°01'55.854"W</p>	<p>LOT 4 SW CORNER SEC. 30 LAT. = 32°00'24.056"N LONG. = 104°01'57.437"W</p>
---	---------------------	--	---

<p>LOT 1 NW CORNER SEC. 30 LAT. = 32°01'15.477"N LONG. = 104°01'55.839"W</p>	<p>LOT 2</p>	<p>LOT 3 W Q CORNER SEC. 30 LAT. = 32°00'49.580"N LONG. = 104°01'55.854"W</p>	<p>LOT 4 SW CORNER SEC. 30 LAT. = 32°00'24.056"N LONG. = 104°01'57.437"W</p>
---	---------------------	--	---

<p>LOT 1 NW CORNER SEC. 30 LAT. = 32°01'15.477"N LONG. = 104°01'55.839"W</p>	<p>LOT 2</p>	<p>LOT 3 W Q CORNER SEC. 30 LAT. = 32°00'49.580"N LONG. = 104°01'55.854"W</p>	<p>LOT 4 SW CORNER SEC. 30 LAT. = 32°00'24.056"N LONG. = 104°01'57.437"W</p>
---	---------------------	--	---

<p>LOT 1 NW CORNER SEC. 30 LAT. = 32°01'15.477"N LONG. = 104°01'55.839"W</p>	<p>LOT 2</p>	<p>LOT 3 W Q CORNER SEC. 30 LAT. = 32°00'49.580"N LONG. = 104°01'55.854"W</p>	<p>LOT 4 SW CORNER SEC. 30 LAT. = 32°00'24.056"N LONG. = 104°01'57.437"W</p>
---	---------------------	--	---

<p>LOT 1 NW CORNER SEC. 30 LAT. = 32°01'15.477"N LONG. = 104°01'55.839"W</p>	<p>LOT 2</p>	<p>LOT 3 W Q CORNER SEC. 30 LAT. = 32°00'49.580"N LONG. = 104°01'55.854"W</p>	<p>LOT 4 SW CORNER SEC. 30 LAT. = 32°00'24.056"N LONG. = 104°01'57.437"W</p>
---	---------------------	--	---

<p>LOT 1 NW CORNER SEC. 30 LAT. = 32°01'15.477"N LONG. = 104°01'55.839"W</p>	<p>LOT 2</p>	<p>LOT 3 W Q CORNER SEC. 30 LAT. = 32°00'49.580"N LONG. = 104°01'55.854"W</p>	<p>LOT 4 SW CORNER SEC. 30 LAT. = 32°00'24.056"N LONG. = 104°01'57.437"W</p>
---	---------------------	--	---

<p>LOT 1 NW CORNER SEC. 30 LAT. = 32°01'15.477"N LONG. = 104°01'55.839"W</p>	<p>LOT 2</p>	<p>LOT 3 W Q CORNER SEC. 30 LAT. = 32°00'49.580"N LONG. = 104°01'55.854"W</p>	<p>LOT 4 SW CORNER SEC. 30 LAT. = 32°00'24.056"N LONG. = 104°01'57.437"W</p>
---	---------------------	--	---

<p>LOT 1 NW CORNER SEC. 30 LAT. = 32°01'15.477"N LONG. = 104°01'55.839"W</p>	<p>LOT 2</p>	<p>LOT 3 W Q CORNER SEC. 30 LAT. = 32°00'49.580"N LONG. = 104°01'55.854"W</p>	<p>LOT 4 SW CORNER SEC. 30 LAT. = 32°00'24.056"N LONG. = 104°01'57.437"W</p>
---	---------------------	--	---

<p>LOT 1 NW CORNER SEC. 30 LAT. = 32°01'15.477"N LONG. = 104°01'55.839"W</p>	<p>LOT 2</p>	<p>LOT 3 W Q CORNER SEC. 30 LAT. = 32°00'49.580"N LONG. = 104°01'55.854"W</p>	<p>LOT 4 SW CORNER SEC. 30 LAT. = 32°00'24.056"N LONG. = 104°01'57.437"W</p>
---	---------------------	--	---

<p>LOT 1 NW CORNER SEC. 30 LAT. = 32°01'15.477"N LONG. = 104°01'55.839"W</p>	<p>LOT 2</p>	<p>LOT 3 W Q CORNER SEC. 30 LAT. = 32°00'49.580"N LONG. = 104°01'55.854"W</p>	<p>LOT 4 SW CORNER SEC. 30 LAT. = 32°00'24.056"N LONG. = 104°01'57.437"W</p>
---	---------------------	--	---

<p>LOT 1 NW CORNER SEC. 30 LAT. = 32°01'15.477"N LONG. = 104°01'55.839"W</p>	<p>LOT 2</p>	<p>LOT 3 W Q CORNER SEC. 30 LAT. = 32°00'49.580"N LONG. = 104°01'55.854"W</p>	<p>LOT 4 SW CORNER SEC. 30 LAT. = 32°00'24.056"N LONG. = 104°01'57.437"W</p>
---	---------------------	--	---

<p>LOT 1 NW CORNER SEC. 30 LAT. = 32°01'15.477"N LONG. = 104°01'55.839"W</p>	<p>LOT 2</p>	<p>LOT 3 W Q CORNER SEC. 30 LAT. = 32°00'49.580"N LONG. = 104°01'55.854"W</p>	<p>LOT 4 SW CORNER SEC. 30 LAT. = 32°00'24.056"N LONG. = 104°01'57.437"W</p>
---	---------------------	--	---

<p>LOT 1 NW CORNER SEC. 30 LAT. = 32°01'15.477"N LONG. = 104°01'55.839"W</p>	<p>LOT 2</p>	<p>LOT 3 W Q CORNER SEC. 30 LAT. = 32°00'49.580"N LONG. = 104°01'55.854"W</p>	<p>LOT 4 SW CORNER SEC. 30 LAT. = 32°00'24.056"N LONG. = 104°01'57.437"W</p>
---	---------------------	--	---

<p>LOT 1 NW CORNER SEC. 30 LAT. = 32°01'15.477"N LONG. = 104°01'55.839"W</p>	<p>LOT 2</p>	<p>LOT 3 W Q CORNER SEC. 30 LAT. = 32°00'49.580"N LONG. = 104°01'55.854"W</p>	<p>LOT 4 SW CORNER SEC. 30 LAT. = 32°00'24.056"N LONG. = 104°01'57.437"W</p>
---	---------------------	--	---

<p>LOT 1 NW CORNER SEC. 30 LAT. = 32°01'15.477"N LONG. = 104°01'55.839"W</p>	<p>LOT 2</p>	<p>LOT 3 W Q CORNER SEC. 30 LAT. = 32°00'49.580"N LONG. = 104°01'55.854"W</p>	<p>LOT 4 SW CORNER SEC. 30 LAT. = 32°00'24.056"N LONG. = 104°01'57.437"W</p>
---	---------------------	--	---

<p>LOT 1 NW CORNER SEC. 30 LAT. = 32°01'15.477"N LONG. = 104°01'55.839"W</p>	<p>LOT 2</p>	<p>LOT 3 W Q CORNER SEC. 30 LAT. = 32°00'49.580"N LONG. = 104°01'55.854"W</p>	<p>LOT 4 SW CORNER SEC. 30 LAT. = 32°00'24.056"N LONG. = 104°01'57.437"W</p>
---	---------------------	--	---

<p>LOT 1 NW CORNER SEC. 30 LAT. = 32°01'15.477"N LONG. = 104°01'55.839"W</p>	<p>LOT 2</p>	<p>LOT 3 W Q CORNER SEC. 30 LAT. = 32°00'49.580"N LONG. = 104°01'55.854"W</p>	<p>LOT 4 SW CORNER SEC. 30 LAT. = 32°00'24.056"N LONG. = 104°01'57.437"W</p>
---	---------------------	--	---

<p>LOT 1 NW CORNER SEC. 30 LAT. = 32°01'15.477"N LONG. = 104°01'55.839"W</p>	<p>LOT 2</p>	<p>LOT 3 W Q CORNER SEC. 30 LAT. = 32°00'49.580"N LONG. = 104°01'55.854"W</p>	<p>LOT 4 SW CORNER SEC. 30 LAT. = 32°00'24.056"N LONG. = 104°01'57.437"W</p>
---	---------------------	--	---

<p>LOT 1 NW CORNER SEC. 30 LAT. = 32°01'15.477"N LONG. = 104°01'55.839"W</p>	<p>LOT 2</p>	<p>LOT 3 W Q CORNER SEC. 30 LAT. = 32°00'49.580"N LONG. = 104°01'55.854"W</p>	<p>LOT 4 SW CORNER SEC. 30 LAT. = 32°00'24.056"N LONG. = 104°01'57.437"W</p>
---	---------------------	--	---

<p>LOT 1 NW CORNER SEC. 30 LAT. = 32°01'15.477"N LONG. = 104°01'55.839"W</p>	<p>LOT 2</p>	<p>LOT 3 W Q CORNER SEC. 30 LAT. = 32°00'49.580"N LONG. = 104°01'55.854"W</p>	<p>LOT 4 SW CORNER SEC. 30 LAT. = 32°00'24.056"N LONG. = 104°01'57.437"W</p>
---	---------------------	--	---

<p>LOT 1 NW CORNER SEC. 30 LAT. = 32°01'15.477"N LONG. = 104°01'55.839"W</p>	<p>LOT 2</p>	<p>LOT 3 W Q CORNER SEC. 30 LAT. = 32°00'49.580"N LONG. = 104°01'55.854"W</p>	<p>LOT 4 SW CORNER SEC. 30 LAT. = 32°00'24.056"N LONG. = 104°01'57.437"W</p>
---	---------------------	--	---

<p>LOT 1 NW CORNER SEC. 30 LAT. = 32°01'15.477"N LONG. = 104°01'55.839"W</p>	<p>LOT 2</p>	<p>LOT 3 W Q CORNER SEC. 30 LAT. = 32°00'49.580"N LONG. = 104°01'55.854"W</p>	<p>LOT 4 SW CORNER SEC. 30 LAT. = 32°00'24.056"N LONG. = 104°01'57.437"W</p>
---	---------------------	--	---

<p>LOT 1 NW CORNER SEC. 30 LAT. = 32°01'15.477"N LONG. = 104°01'55.839"W</p>	<p>LOT 2</p>	<p>LOT 3 W Q CORNER SEC. 30 LAT. = 32°00'49.580"N LONG. = 104°01'55.854"W</p>	<p>LOT 4 SW CORNER SEC. 30 LAT. = 32°00'24.056"N LONG. = 104°01'57.437"W</p>
---	---------------------	--	---

<p>LOT 1 NW CORNER SEC. 30 LAT. = 32°01'15.477"N LONG. = 104°01'55.839"W</p>	<p>LOT 2</p>	<p>LOT 3 W Q CORNER SEC. 30 LAT. = 32°00'49.580"N LONG. = 104°01'55.854"W</p>	<p>LOT 4 SW CORNER SEC. 30 LAT. = 32°00'24.056"N LONG. = 104°01'57.437"W</p>
---	---------------------	--	---

<p>LOT 1 NW CORNER SEC. 30 LAT. = 32°01'15.477"N LONG. = 104°01'55.839"W</p>	<p>LOT 2</p>	<p>LOT 3 W Q CORNER SEC. 30 LAT. = 32°00'49.580"N LONG. = 104°01'55.854"W</p>	<p>LOT 4 SW CORNER SEC. 30 LAT. = 32°00'24.056"N LONG. = 104°01'57.437"W</p>
---	---------------------	--	---

<p>LOT 1 NW CORNER SEC. 30 LAT. = 32°01'15.477"N LONG. = 104°01'55.839"W</p>	<p>LOT 2</p>	<p>LOT 3 W Q CORNER SEC. 30 LAT. = 32°00'49.580"N LONG. = 104°01'55.854"W</p>	<p>LOT 4 SW CORNER SEC. 30 LAT. = 32°00'24.056"N LONG. = 104°01'57.437"W</p>
---	---------------------	--	---

<p>LOT 1 NW CORNER SEC. 30 LAT. = 32°01'15.477"N LONG. = 104°01'55.839"W</p>	<p>LOT 2</p>	<p>LOT 3 W Q CORNER SEC. 30 LAT. = 32°00'49.580"N LONG. = 104°01'55.854"W</p>	<p>LOT 4 SW CORNER SEC. 30 LAT. = 32°00'24.056"N LONG. = 104°01'57.437"W</p>
---	---------------------	--	---

<p>LOT 1 NW CORNER SEC. 30 LAT. = 32°01'15.477"N LONG. = 104°01'55.839"W</p>	<p>LOT 2</p>	<p>LOT 3 W Q CORNER SEC. 30 LAT. = 32°00'49.580"N LONG. = 104°01'55.854"W</p>	<p>LOT 4 SW CORNER SEC. 30 LAT. = 32°00'24.056"N LONG. = 104°01'57.437"W</p>
---	---------------------	--	---

<p>LOT 1 NW CORNER SEC. 30 LAT. = 32°01'15.477"N LONG. = 104°01'55.839"W</p>	<p>LOT 2</p>	<p>LOT 3 W Q CORNER SEC. 30 LAT. = 32°00'49.580"N LONG. = 104°01'55.854"W</p>	<p>LOT 4 SW CORNER SEC. 30 LAT. = 32°00'24.056"N LONG. = 104°01'57.437"W</p>
---	---------------------	--	---

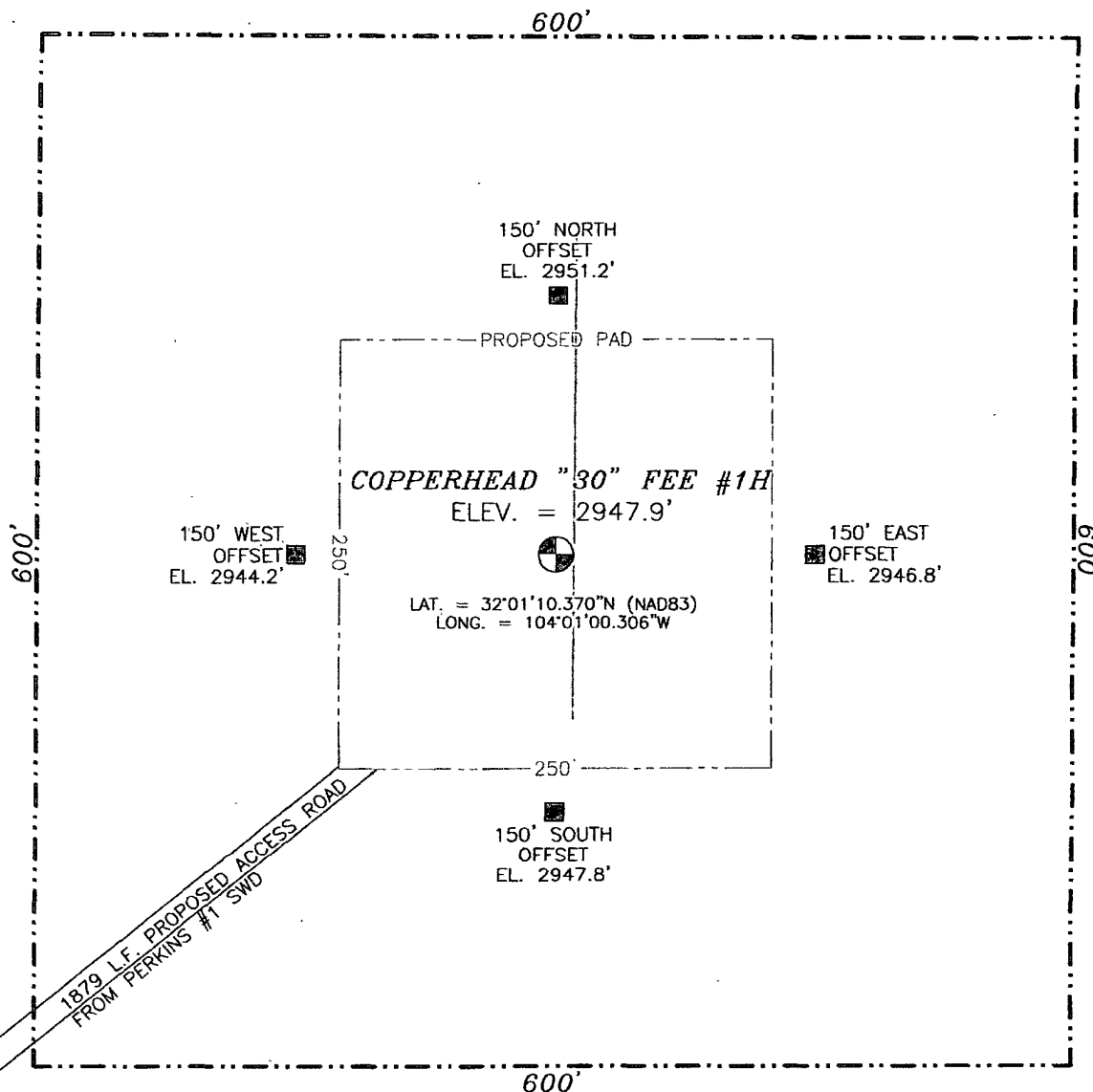
<p>LOT 1 NW CORNER SEC. 30 LAT. = 32°01'15.477"N LONG. = 104°01'55.839"W</p>	<p>LOT 2</p>	<p>LOT 3 W Q CORNER SEC. 30 LAT. = 32°00'49.580"N LONG. = 104°01'55.854"W</p>	<p>LOT 4 SW CORNER SEC. 30 LAT. = 32°00'24.056"N LONG. = 104°01'57.437"W</p>
---	---------------------	--	---

<p>LOT 1 NW CORNER SEC. 30 LAT. = 32°01'15.477"N LONG. = 104°01'55.839"W</p>	<p>LOT 2</p>	<p>LOT 3 W Q CORNER SEC. 30 LAT. = 32°00'49.580"N LONG. = 104°01'55.854"W</p>	<p>LOT 4 SW CORNER SEC. 30 LAT. = 32°00'24.056"N LONG. = 104°01'57.437"W</p>
---	---------------------	--	---

<p>LOT 1 NW CORNER SEC. 30 LAT. = 32°01'15.477"N LONG. = 104°01'55.839"W</p>	<p>LOT 2</p>	<p>LOT 3 W Q CORNER SEC. 30 LAT. = 32°00'49.580"N LONG. = 104°01'55.854"W</p>	<p>LOT 4 SW CORNER SEC. 30 LAT. = 32°00'24.056"N LONG. = 104°01'57.437"W</p>
---	---------------------	--	---

<p>LOT 1 NW CORNER SEC. 30 LAT. = 32°01'15.477"N LONG. = 104°01'55.839"W</p>	<p>LOT 2</p>	<p>LOT </p>
---	---------------------	--------------------

SECTION 30, TOWNSHIP 26 SOUTH, RANGE 29 EAST, N.M.P.M.
EDDY COUNTY, STATE OF NEW MEXICO



0 10 50 100 200

SCALE 1" = 100'

DIRECTIONS TO LOCATION

FROM THE INTERSECTION OF U.S. 285 AND COUNTY ROAD 726 (CATFISH ROAD) JUST NORTH OF THE SOUTH LINE OF THE STATE OF NEW MEXICO GO EAST ON CR 726 1.7 MILES TO A CALICHE ROAD ON THE NORTH BEING AN OLD RAIL ROAD BED GO NORTH ON OLD RAIL BED 1.8 MILES TO PERKINS #1 SWD SITE FROM THE NORTHWEST CORNER OF PAD FOLLOW CL ROAD PROPOSAL FLAGS TO SITE 1879LF

OGX RESOURCES, LLC
COPPERHEAD "30" FEE #1H
LOCATED 480 FT. FROM THE NORTH LINE
AND 480 FT. FROM THE EAST LINE OF
SECTION 30, TOWNSHIP 26 SOUTH,
RANGE 29 EAST, N.M.P.M.
EDDY COUNTY, STATE OF NEW MEXICO

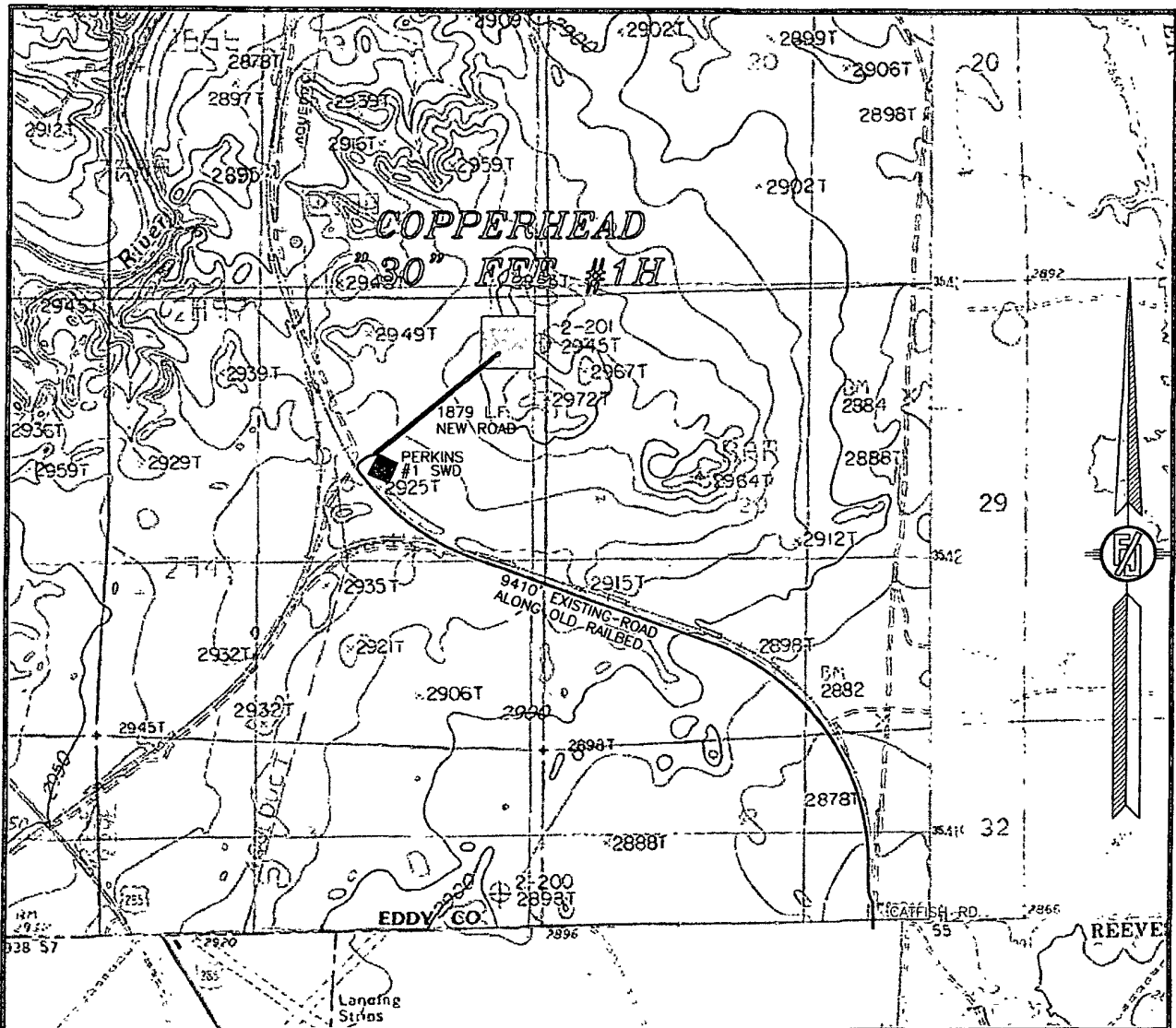
SURVEY NO. 659

OCTOBER 18, 2011

MADRON SURVEYING, INC. 301 SOUTH CANAL
(575) 234-3341

CARLSBAD, NEW MEXICO

SECTION 30, TOWNSHIP 26 SOUTH, RANGE 29 EAST, N.M.P.M.
EDDY COUNTY, STATE OF NEW MEXICO
LOCATION VERIFICATION MAP



CONTOUR INTERVAL:
RED BLUFF

NOT TO SCALE

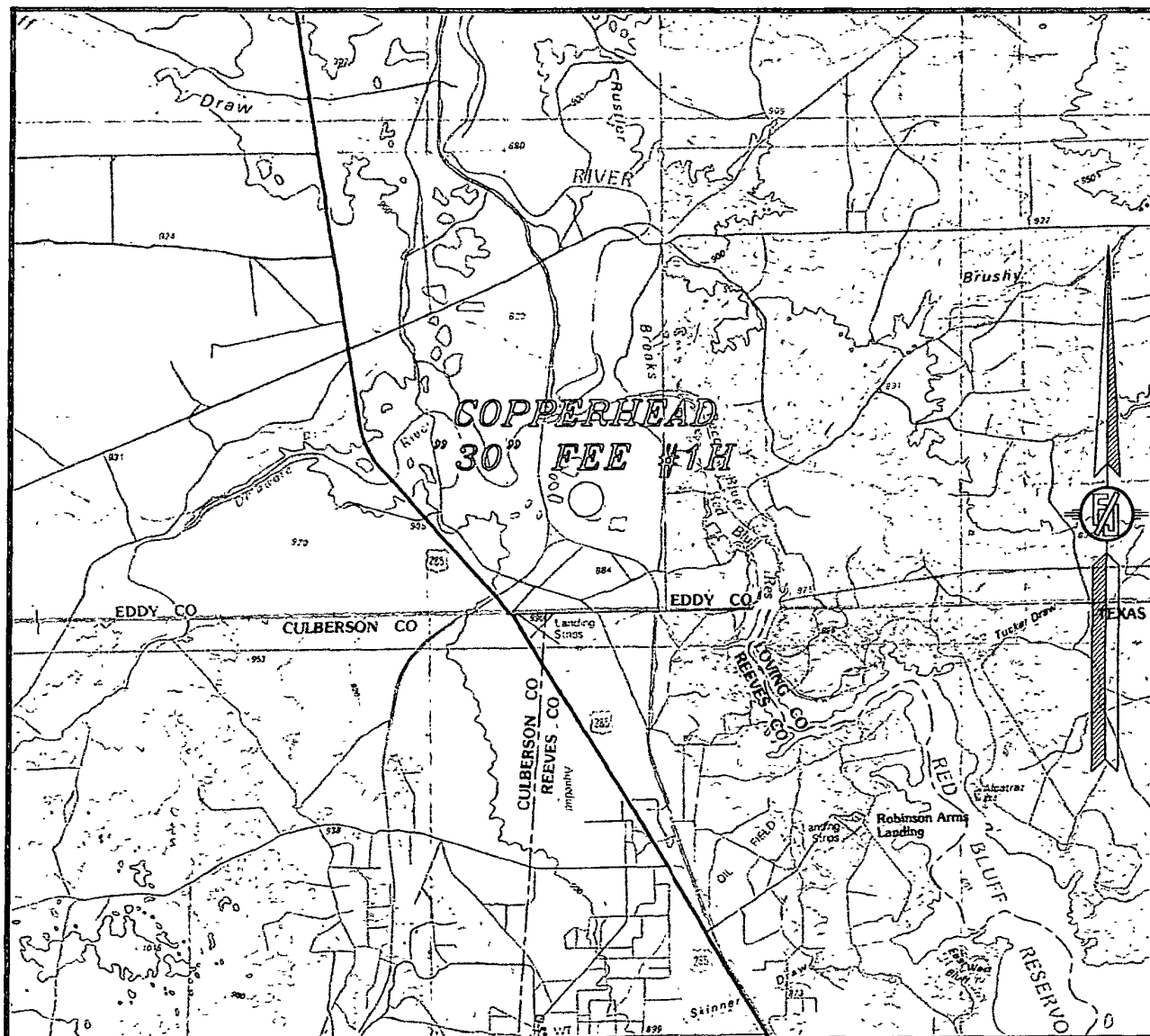
OGX RESOURCES, LLC
COPPERHEAD "30" FEE #1H
LOCATED 480 FT. FROM THE NORTH LINE
AND 480 FT. FROM THE EAST LINE OF
SECTION 30, TOWNSHIP 26 SOUTH,
RANGE 29 EAST, N.M.P.M.
EDDY COUNTY, STATE OF NEW MEXICO

OCTOBER 18, 2011

SURVEY NO. 659

MADRON SURVEYING, INC. 301 SOUTH CANAL CARLSBAD, NEW MEXICO
(575) 234-3341

SECTION 30, TOWNSHIP 26 SOUTH, RANGE 29 EAST, N.M.P.M.
EDDY COUNTY, STATE OF NEW MEXICO
VICINITY MAP



NOT TO SCALE

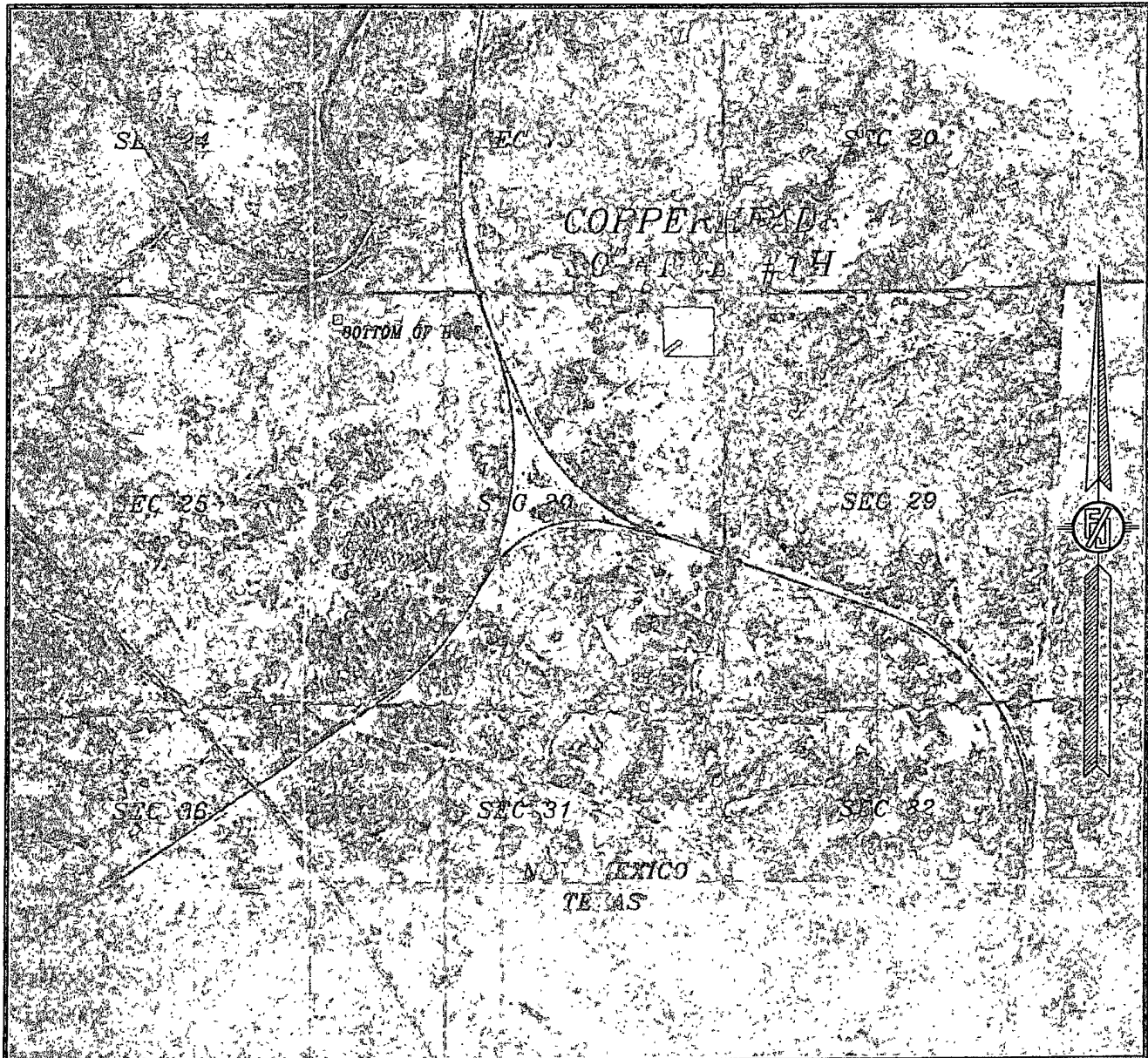
OGX RESOURCES, LLC
COPPERHEAD "30" FEE #1H
LOCATED 480 FT. FROM THE NORTH LINE
AND 480 FT. FROM THE EAST LINE OF
SECTION 30, TOWNSHIP 26 SOUTH,
RANGE 29 EAST, N.M.P.M.
EDDY COUNTY, STATE OF NEW MEXICO

OCTOBER 18, 2011

SURVEY NO. 659

MADRON SURVEYING, INC. 301 SOUTH CANAL CARLSBAD, NEW MEXICO
(575) 234-3341

SECTION 30, TOWNSHIP 26 SOUTH, RANGE 29 EAST, N.M.P.M.
EDDY COUNTY, STATE OF NEW MEXICO
AERIAL PHOTO



NOT TO SCALE
AERIAL PHOTO:
GOOGLE EARTH
USDA - AUG. 2009

OGX RESOURCES, LLC
COPPERHEAD "30" FEE #1H
LOCATED 480 FT. FROM THE NORTH LINE
AND 480 FT. FROM THE EAST LINE OF
SECTION 30, TOWNSHIP 26 SOUTH,
RANGE 29 EAST, N.M.P.M.
EDDY COUNTY, STATE OF NEW MEXICO

OCTOBER 18, 2011

SURVEY NO. 659

MADRON SURVEYING, INC. 301 SOUTH CANAL CARLSBAD, NEW MEXICO
(575) 234-3341



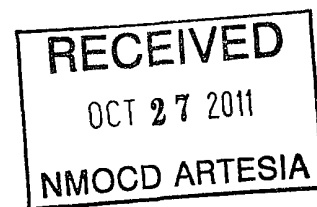
3106 N. Big Spring St. Ste. 100
Midland, TX 79705
Tel: (432) 685-9158

October 26, 2011

SENT VIA FEDERAL EXPRESS

Mr. Craig Shapard
State of New Mexico Oil Conservation Division
811 S. First Street
Artesia, New Mexico 88210

Re: OGX Resources, LLC (OGX)
Copperhead "30" Fee #1H
SL: 480' FNL & 480' FEL, Unit A
BHL: 330' FNL & 330' FWL, Unit D
Section 30, T-26S, R-29E
Eddy County, New Mexico



Dear Mr. Shapard:

Enclosed please find the C-144 CLEZ form, Directional Plan and plats for the referenced well. The Application for Permit to Drill was submitted online on October 26, 2011. OGX plans to spud this well on December 1, 2011. Please let me know if there is anything we can do to expedite the approval process.

If you have questions or if you require additional information, please feel free to call me at (281) 468-2448 or send an email to me at the address below.

Sincerely,

A handwritten signature in cursive script that reads 'Vicki Johnston'.

Vicki Johnston
Gray Surface Specialties
Agent for OGX Resources, LLC
vjohnston1@gmail.com