

UNITED STATES
DEPARTMENT OF THE INTERIOR
BUREAU OF LAND MANAGEMENT

OCD-ARTESIA

ATS-11-839

FORM APPROVED
OMB NO. 1004-0137
Expires March 31, 2007


APPLICATION FOR PERMIT TO DRILL OR REENTER

1a. Type of Work <input checked="" type="checkbox"/> DRILL <input type="checkbox"/> REENTER		5. Lease Serial No. NMNM 106902
1b. Type of Well <input checked="" type="checkbox"/> Oil Well <input type="checkbox"/> Gas Well <input type="checkbox"/> Other <input checked="" type="checkbox"/> Single Zone <input type="checkbox"/> Multiple Zone		6. If Indian, Allottee or Tribe Name
2. Name of Operator OXY USA Inc. <166967		7. Unit or CA Agreement Name and No.
3a. Address PO BOX 4294, Houston, Texas 77210	3b. Phone No. (include area code) 713-366-5360	8. Lease Name and Well No. Comanche PW Fed #1 [38935]
4. Location of Well (Report location clearly and in accordance with any State requirements)* At surface 330 FNL 660 FWL NWNW(D) At proposed prod. zone 330 FNL 660 FWL NWNW(D)		9. API Well No. 30-015-39674 [97867]
14. Distance in miles and direction from nearest town or post office* 35 miles NW of Carlsbad, NM		10. Field and Pool, or Exploratory Exploratory; Wildcat, Yeso
15. Distance from proposed* location to nearest property or lease line, ft. (Also to nearest drg. unit line, if any) 330'		11. Sec., T., R., M., or Blk. and Survey or Area Sec. 19, T22S, R23E
16. No. of Acres in lease 400		12. County or Parish Eddy
17. Spacing Unit dedicated to this well 40		13. State NM
18. Distance from proposed location* to nearest well, drilling, completed, applied for, on this lease, ft. 3000' 3100		20. BLM/BIA Bond No. on file ES0136
21. Elevations (Show whether DF, KDB, RT, GL, etc.) 4334 GL		22. Approximate date work will start* 08/31/2011
		23. Estimated duration 60 Days

24. Attachments

The following, completed in accordance with the requirements of Onshore Oil and Gas Order No. 1, shall be attached to this form:

- | | |
|---|--|
| 1. Well plat certified by a registered surveyor. | 4. Bond to cover the operations unless covered by an existing bond on file (see Item 20 above). |
| 2. A Drilling Plan | 5. Operator certification. |
| 3. A Surface Use Plan (if the location is on National Forest System Lands, the SUPO shall be filed with the appropriate Forest Service Office). | 6. Such other site specific information and/or plans as may be required by the authorized officer. |

25. Signature 	Name (Printed/Typed) Jereme W. Robinson	Date 07/18/2011
Title Sr. Regulatory Analyst		
Approved by (Signautre) /s/ Don Peterson	Name (Printed/Typed) [RECEIVED NOV 16 2011]	Date NOV 10 2011
Title FIELD MANAGER	Office CARLSBAD FIELD OFFICE MOCD ARTESIA	

Application approval does not warrant or certify that the applicant holds legal or equitable title to those rights in the subject lease which would entitle the applicant to conduct operations thereon.
Conditions of approval, if any, are attached.

APPROVAL FOR TWO YEARS

Title 18 U.S.C. Section 1001 and Title 43 U.S.C. Section 1212, make it a crime for any person knowingly and willfully to make to any department or agency of the United States any false, fictitious or fraudulent statements or representations as to any matter within its jurisdiction.

*(Instructions on page 2)

Roswell Controlled Water Basin

Approval Subject to General Requirements
& Special Stipulations AttachedSEE ATTACHED FOR
CONDITIONS OF APPROVAL

United States Department of the Interior
Bureau of Land Management
Carlsbad Field Office
620 East Greene Street
Carlsbad, New Mexico 88220

Attention: Linda Denniston

RE: Comanche PW Fed # 1

Eddy County, New Mexico

STATEMENT ACCEPTING RESPONSIBILITY FOR OPERATIONS

OPERATOR NAME: OXY USA Inc.
ADDRESS: P.O. Box 4294
Houston, Texas 77210-4294

The undersigned accepts all applicable terms, conditions, stipulations, and restrictions concerning operations conducted on the leased land or portion thereof, as described below:

LEASE NO.: NMNM 106902
LEGAL DESCRIPTION: 330' FNL & 660' FWL
Section 19-T22S-R23E
Eddy County, New Mexico

FORMATIONS: None

BOND COVERAGE: Nationwide

BLM BOND FILE NO.: ES 0136

AUTHORIZED SIGNATURE: 
Taylor Cann

TITLE: Land Negotiator

DATE: July 13, 2011

cc: David Stewart

APD DATA – DRILLING PLAN –

OPERATOR NAME / NUMBER: OXY USA Inc

16696

LEASE NAME / NUMBER: Comanche PW Fed Com # 1 Federal Lease No:

STATE: NM

COUNTY: Eddy

SURFACE LOCATION:

330' North x 660' West
D, Sec. 19, T 22S, R 23E, Eddy County

SL: LAT: 32.3827061° LONG: 104.6457596° X: 503084.2 Y: 403553.7 NAD: 27

C-102 PLAT APPROX GR ELEV: 4334.1'

1. GEOLOGIC NAME OF SURFACE FORMATION

a. Permian

2. ESTIMATED TOPS OF GEOLOGICAL MARKERS & DEPTHS OF ANTICIPATED FRESH WATER, OIL OR GAS

Formation	TV Depth Top	Expected Fluids
Queen	Surface	Water
Grayburg	300	
Glorieta	1920	
Yeso	2020	Oil
Bone Spring	3000	Oil
TD	3100	Oil

A. Appropriately weighted mud will be used to isolate potential gas, oil, and water zones until such time as casing can be cemented into place for zonal isolation.

GREATEST PROJECTED TD 3000' MD/ 3000' TVD OBJECTIVE: Yeso

3. CASING PROGRAM

New - per email 9-26-11 WWI 10/1/11

Surface Casing: 11 3/4" casing set at ± 450' MD/ 450' TVD in a 14 3/4" hole filled with 8.40 ppg mud

Interval	Length	Wt	Gr	Cplg	SF Coll	SF Burst	SF Ten
0'-450'	450'	42	H-40	ST&C	5.05	3.93	2.57

Intermediate Casing: 8 5/8" casing set at ± 1500' MD / 1500' TVD in a 10 5/8" hole filled with 8.4 ppg mud

Interval	Length	Wt	Gr	Cplg	SF Coll	SF Burst	SF Ten
0'-1500'	1500'	24	J-55	ST&C	2.22	2.64	4.04

Production Casing: 5 1/2" casing set at ± 3100' MD / 3100' TVD in a 7 7/8" hole filled with 9.2 ppg mud

Interval	Length	Wt	Gr	Cplg	SF Coll	SF Burst	SF Ten
0'-3100'	3100'	15.5	J-55	LT&C	1.34	1.37	1.63

Collapse and burst loads calculated using Stress Check with actual anticipated loads.

4. CEMENT PROGRAM:

Surface Interval

Interval	Amount sv	Ft of Fill	Type	Gal/Sk	PPG	Ft ³ /sk	24 Hr Comp
<u>Surface 450' (TOC: 0')</u>							
Lead: 0' - 450' (150% Excess)	390	450	Premium Plus Cement + 2% Calcium Chloride	6.39	14.8	1.35	2500

Intermediate Interval

Interval	Amount sv	Ft of Fill	Type	Gal/Sk	PPG	Ft ³ /sk	24 Hr Comp
<u>Intermediate 1500' (TOC: 0')</u>							
Lead: 0' - 1145' (150% Excess)	260	1145	Halliburton Light Premium Plus+3 lbm/sk Salt + 5 lbm/sk Gilsonite	9.8	12.8	1.90	570
Tail: 1145' - 1500' (150 % Excess)	150	355	Premium Plus Cement+5 lbm/sk Gilsonite + 0.125 lbm/sk Poly-E-Flake+1 % Calcium Chloride - Flake	5.83	14.8	1.34	1850

Production Interval

Interval	Amount sv	Ft of Fill	Type	Gal/Sk	PPG	Ft ³ /sk	24 Hr Comp
<u>Production 3100' (TOC: 0')</u>							
Lead: 0' - 2366' (100 % Excess)	370	2366	Halliburton Light Premium Plus+3 lbm/sk Salt+5 lbm/sk Gilsonite+0.125 lbm/sk Poly-E-Flake	9.77	12.8	1.90	580
Tail: 2366' - 3100' (100% Excess)	200	734	Premium Plus Cement+0.5 % Halad(R)-344+0.125 lbm/sk Poly-E-Flake	6.28	14.8	1.33	1750

5. PRESSURE CONTROL EQUIPMENT

Surface: 0 – 450': None

Intermediate: 0 – 1500' Intermediate hole will be drilled with a 11" 5M two ram stack w/ 5M annular preventer, & 5M Choke Manifold.

- a) The 11" 5000 psi blowout prevention equipment will be installed and operational after setting the 11 3/4" surface casing and the 11 3/4" SOW x 13 5/8" 3K conventional wellhead; the rotating head body will be installed but the rubber will be installed when it becomes operationally necessary.
- b) After the required per APD conditions of approval WOC, the BOP and ancillary BOPE will be tested by a third party upon installation to the 11 3/4" H-40 42ppf surface casing. All equipment will be tested to 250/1386 (70% of casing burst) psi for 30 minutes to be in compliance with the Onshore Order # 2 which states the BOPE shall be tested to 70 % of the yield of the casing when the BOP and casing are not isolated. Testing will be done against casing without a cup tester type plug.

Production: 0 – 3100' will be drilled will be drilled with a 11" 5M two ram stack w/ 5M annular preventer, & 5M Choke Manifold.

- a. The BOP and ancillary BOPE will be tested by a third party upon installation to the 8 5/8" intermediate casing at 1500'. All equipment will be tested to 3000 psi (high) and 250 psi (low) except the annular will be tested to 3000 psi (high) and also to 250 psi (low). All test will performed with the implementation of a test type plug
- b. Prior to drilling out the 8-5/8". The pipe rams will be functionally tested during each 24 hour period; the blind rams will be functionally tested on each trip out of the hole. These functional tests will be documented on the Daily Driller's Log. Other accessory equipment (BOPE) will include a safety valve and subs as needed to fit all drill strings, and a 2" kill line and 3 " choke line having a 5000 psi WP rating. Oxy respectfully requests that the system be tested at 3,000 psi WP rating as bottom hole pressure requires only 3K BOPE to be sufficient to satisfy well control...
- c. Oxy also requests a variance to connect the BOP choke outlet to the choke manifold using a co-flex hose made by *Contitech Rubber Industrial KFT*. It is a 3" ID x 35' flexible hose rated to 10,000 psi working pressure. It has been tested to 15,000 psi and is built to API Spec 16C. Once the flex line is installed it will be tied down with safety clamps. Please see attached certifications.
- d. See attached BOP & Choke manifold diagrams.
- e. A Kelly cock will be in the drill string at all times while drilling.
- f. A full opening drill pipe stabbing valve with the appropriate connections will be on the rig floor at all times

6. MUD PROGRAM:

Depth	MW ppg	Vis - Sec	Fluid Loss	Type System
0 - 450'	8.4 - 8.6	32 - 34	NC	Fresh Water / Spud Mud
450' - 1500'	8.4 - 8.6	28 - 29	NC	Fresh Water
1500' - 3100'	9.0 - 9.2	28 - 29	NC	Cut Brine

Remarks: Pump high viscosity sweeps as needed for hole cleaning. The mud system will be monitored visually/manually as well as with an electronic PVT. The necessary mud products for additional weight and fluid loss control will be on location at all times.

7. AUXILIARY WELL CONTROL AND MONITORING EQUIPMENT

- A Kelly cock will be in the drill string at all times.
- A full opening drill pipe stabbing valve having the appropriate connections will be on the rig floor unobstructed and readily accessible at all times.
- Hydrogen Sulfide detection equipment will be in operation after drilling out the surface casing shoe until the production casing is cemented. Breathing equipment will be on location upon drilling the surface casing shoe until total depth is reached. **If Hydrogen Sulfide is encountered, measured amounts and formations will be reported to the BLM**

8. LOGGING / CORING AND TESTING PROGRAM:

- Mud Logger / SDT: None.
- Open Hole Logs as follows: GR from Intermediate shoe point to TD.

9. POTENTIAL HAZARDS:

- H2S detection equipment will be in operation after drilling out the surface casing shoe until the production casing has been cemented. Breathing equipment will be on location from drilling out the surface shoe until production casing is cemented. If H2S is encountered the operator will comply with Onshore Order #6.
- No abnormal temperatures or pressures are anticipated. All personnel will be familiar with all aspects of safe operation of equipment being used to drill this well. Adequate flare lines will be installed off the mud/gas separator where gas may be flared safely.
- All personnel will be familiar with all aspects of safe operation of equipment being used to drill this well.
- Adequate flare lines will be installed off the mud/gas separator where gas may be flared safely.

10. ANTICIPATED STARTING DATE AND DURATION OF OPERATIONS

Road and location construction will begin after the APD is approved. Move in operations and drilling is expected to take 15 days. If production casing is run, then an additional 30 days will be needed to complete the well and construct surface facilities and/or lay flow lines in order to place well on production.

11. COMPANY PERSONNEL:

<u>Name</u>	<u>Title</u>	<u>Office Phone</u>	<u>Mobile Phone</u>
Luis Tarazona	Drilling Engineer	713-366-5771	713-628-9526
Camilo Arias	Drilling Engineer Supervisor	713-366-5953	281-468-4652
Doug Chester	Drilling Manager	713-366-5194	713-918-9124

BHT 100°F
BHP 1550 psi
- per email 9-26-11
WWI 10/1/11

Accumulator Placement for H&P Flex IV rig fleet

Prior drilling out surface casing shoe, the accumulator will be installed and functional at an appropriate distance as referenced in API 16.D to satisfy drilling contractor and operator operational best practices, and safety requirements.

The accumulator is equipped with two closing pumps set as primary and back up. Power to the closing unit pumps is constantly available so that the pumps will automatically start when the closing unit manifold pressure decreases to 90 percent of the accumulator operating pressure. Each closing unit pump is capable to close the annular BOP and open the hydraulic choke valve as per API (16.D).

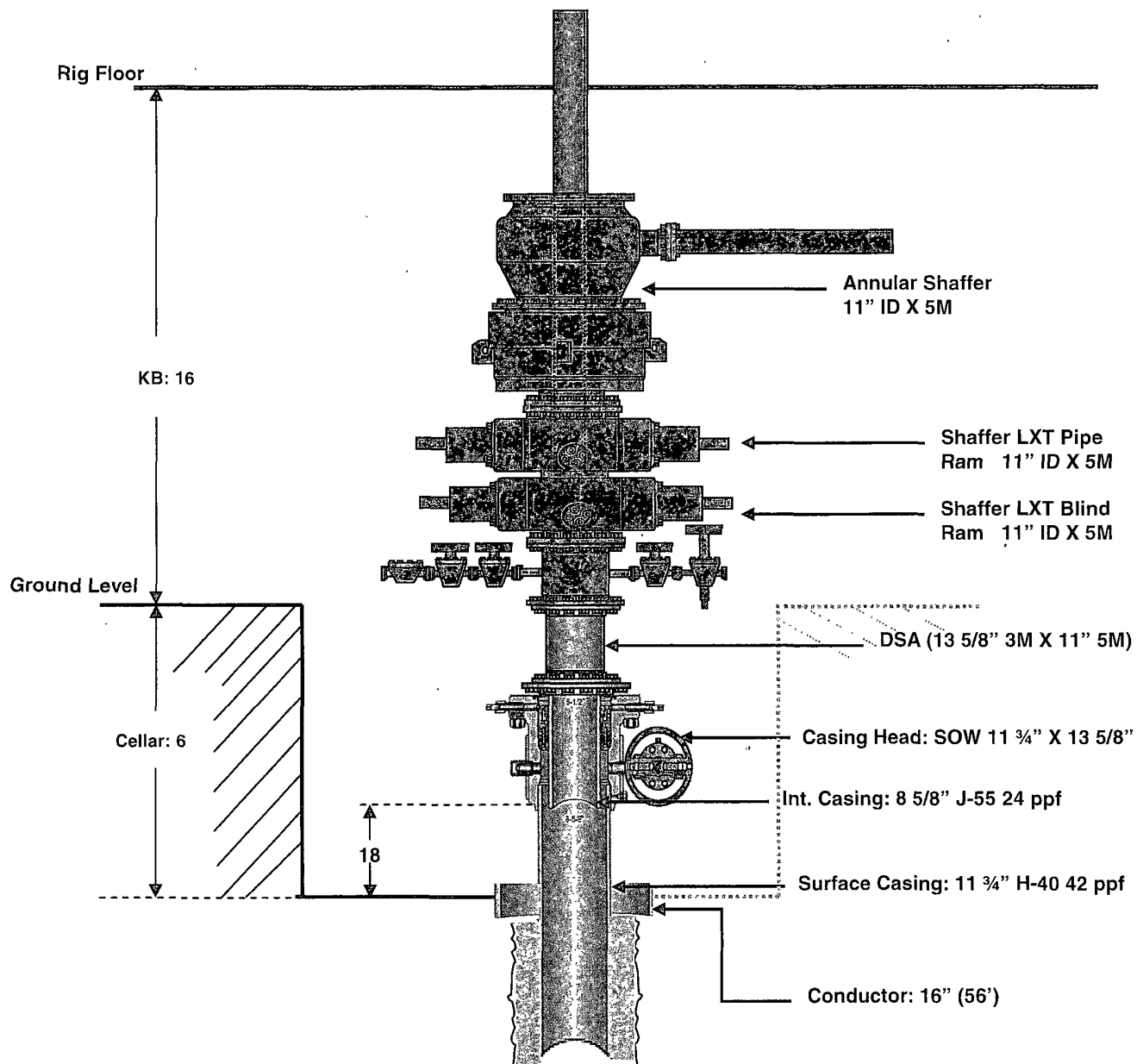
Two independent sources of energy are available to each closing pump (rig generating systems). Each independent source of energy is capable of operating the pumps at a rate that will satisfy the requirements. The accumulator closing pumps will include an extra emergency source (nitrogen bottle system) to assist the closure of the BOP stack in case of an event that requires complete electric shut down of all sources.

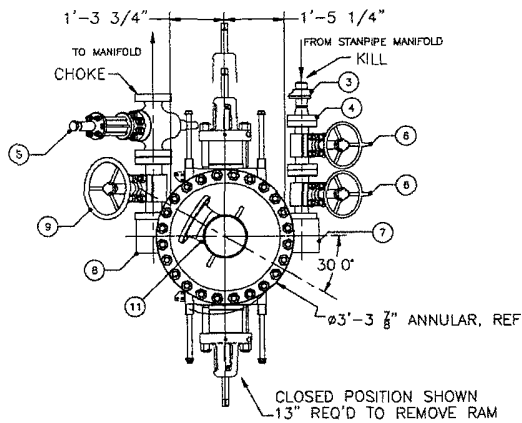
An accumulator pre-charge pressure test will be conducted as per Onshore Order #2 prior to connecting the closing unit to the blowout preventer stack such test will be noted and signed in the drilling log/IADC report by the company representative, and rig manager. A closing test will be performed prior to pressure testing the blowout preventer stack with each closing pump separately (primary and back up) to satisfy function requirements.

If an event is encountered where the emergency source (Nitrogen bottles is required the BLM field office will be notified immediately.

Attachments:

- a. Accumulator placement & manifold diagrams.
- b. Remote Kill Line Diagram
- c. Power source systems for Manifold and Accumulator





PROPER TORQUE FOR BOLTS

COMPONENT	FLANGE SIZE & RATING	BOLT SIZE	TORQUE	(FT/LBS)
			CF=0.07	CF=0.13
SPOOLS, ANNULAR & RAMS	11"x5M	1 7/8" DIA.	1890	3330
BLOCKS	3 1/8x5M	1 1/8" DIA.	401	686
CHOKE VALVES	3 1/8x5M	1 1/8" DIA.	401	686
KILL VALVES	2 1/16x5M	7/8" DIA.	188	319

BILL OF MATERIAL

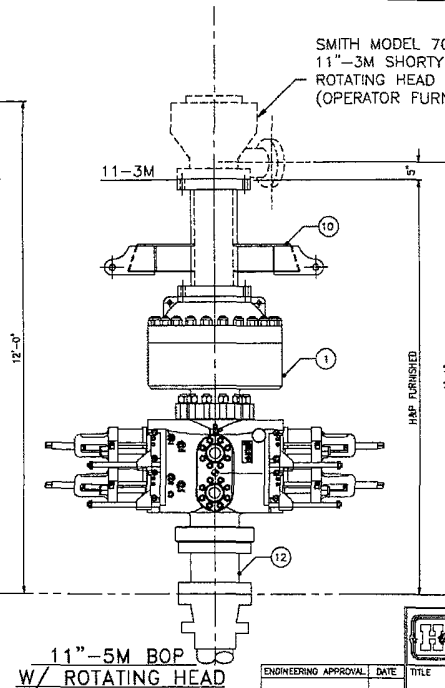
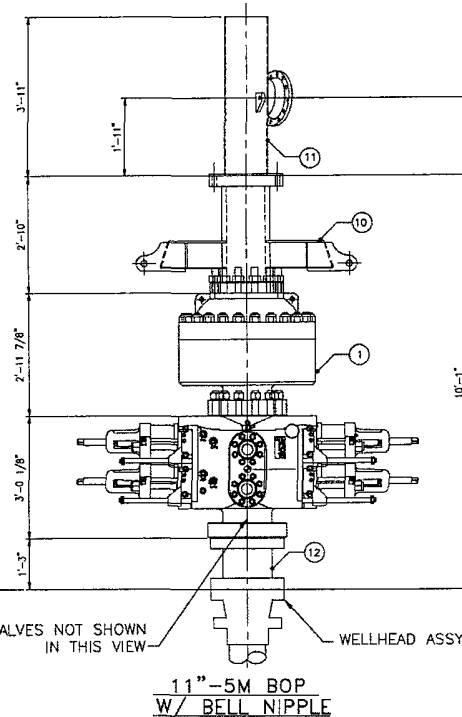
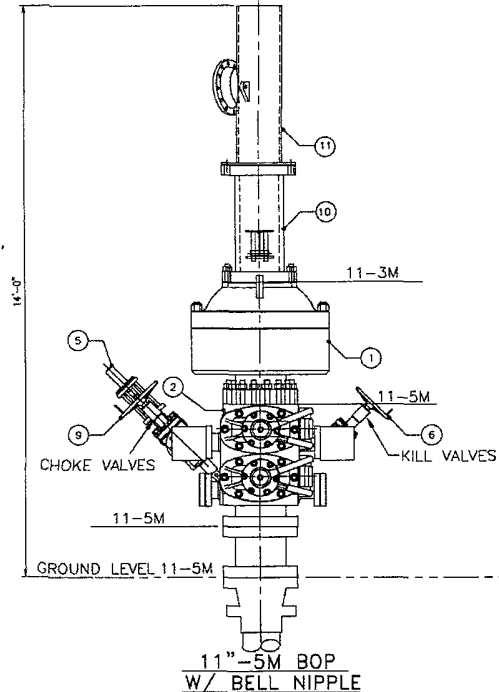
ITEM NO.	QUAN.	DESCRIPTION	PART NUMBER	WEIGHT
		11-5M BOP ASSEMBLY		
1	1	ANNULAR, 11x3M BOLTED TYPE		6005
2	1	BOP DOUBLE RAM		7600
4		RAM ELEMENTS		444
3	1	HAMMER UNION, 2-1502# X31 (BW)		5
4	1	FLANGE, WN 2 1/16-5M API		42
5	1	VALVE, GATE FLS-HCR 3 1/8-5M		396
6	2	VALVE, GATE 2 1/16-5M		350
7	1	90° STUDDED BLOCK, 3 1/8-5M X 2 1/16-5M		240
8	1	90° STUDDED BLOCK, 3 1/8-5M X 3 1/8-5M		250
9	2	VALVE, GATE 3 1/8-5M		720
10	1	BELL NIPPLE BOP LIFTING SECTION	WL F4M-II-318DIA	780
11	1	BELL NIPPLE EXTENSION	WL F4M-II-318DIA	396
12	1	11"-5M x 11"-5M x 1'-3" LONG SPACER		600
		SPOOL - WORKING PRESSURE 5000 PSI		

HARDWARE

ITEM NO.	QUAN.	DESCRIPTION	PART NUMBER	WEIGHT
		RINGS AND BOLTS		400

APPROX. TOTAL WEIGHT = 18,228 LBS.

SMITH MODEL 7068
11"-3M SHORTY
ROTATING HEAD
(OPERATOR FURNISHED)



PROPRIETARY

THIS DRAWING AND THE IDEAS AND INFORMATION INCLUDED IN THIS DRAWING ARE PROPRIETARY AND ARE NOT TO BE REPRODUCED, DISTRIBUTED OR DISCLOSED IN ANY MANNER WITHOUT THE PRIOR WRITTEN CONSENT OF A DULY AUTHORIZED OFFICER OF HELMERICH & PAYNE INTL. DRILLING CO.

NOTES:

- ALL BOP RAMS SHOWN ARE SHAFFER MODEL LXT 11-5M PSI WP - FLANGED BOTTOM AND STUDDED TOP

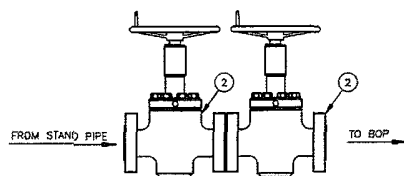
ENGINEERING APPROVAL DATE

REV	DATE	DESCRIPTION	BY
1	06/08/08	ADDED 1 OF 4 SHITS WAS 1 OF 3	DRJ
2	07/29/08	SHEET 1 OF 3 WAS 1 OF 5	DRJ

HELMERICH & PAYNE
INTERNATIONAL DRILLING CO.

11-5M BOP EQUIPMENT
GENERAL ARRANGEMENT

CUSTOMER: OXY-PERMIAN	PROJECT: F4M
DRAWN: DJOHNSON	DATE: 07/14/08
SCALE: NTS	SHEET: 1 OF 4
REV: B	DWG. NO: F4M-H-320



3'-5"

1000 PSI

1/2" NPT

300 LB.

1'-13 1/16"

2'-10 1/16"

2'-3 1/2"

1'-29 1/16"

1'-13 1/16"

79 1/16"

10 3/8"

3/16"

45°

45°

1'-9 13/16"

PROPRIETARY

DIM "A"

1'-0"

11 1/2"

DIM "B"

1'-0"

1'-0 1/2"

RIGS THAT APPLY

335 THRU 339

340, 344 THRU 347

TO VENT/FLARE

APPLIES TO RIGS
345, 346 & 347 ONLY

TO VENT/FLARE

TO VENT/FLARE

C WELL

A technical diagram of a vertical valve assembly. The assembly consists of a main vertical body with a handwheel on the left side, labeled with a circled '2'. At the top of the assembly is a vertical stem with a handle, labeled with a circled '1'. The base of the assembly is a circular flange with six bolt holes, labeled with a circled '3'. A horizontal pipe extends from the right side of the base, labeled 'TO VENT/FLARE'.

DIMENSION NOTATION		
DIM "A"	DIM "B"	RIGS THAT APPLY
1'-5"	1'-6"	335 THRU 339
11 1/2"	1'-9 1/2"	340, 344 THRU 347

- ## LEGEND
- ①—3 1/8"—5M FLANGED END GATE VALVE
 - ②—2 1/16"—5M FLANGED END GATE VALVE
 - ③—BLOCK WITH TRANSMITTER FLANGE AND PRESSURE GAUGE
 - ④—2 1/16"—5M ADJUSTABLE CHOKE
 - ⑤—TRANSMITTER FLANGE
 - ⑥—PRESSURE GAUGE
 - ⑦—DSA 2 1/16"—5M x 3 1/16"—10M
 - ⑧—3 1/16"—10M HYDRAULIC CHOKE
 - ⑨—3 1/8"—5M x 3 1/16"—10M SPOOL
 - ⑩—3 1/8"—5M x 3 1/8"—5M STUDDED TEE
 - ⑪—3 1/8"—5M FLANGED END HCR GATE VALVE
 - ⑫—2 1/16"—5M x 2 1/16"—5M SPOOL

APPLIES TO RIGS
345, 346 & 347 ONLY.

ISSUED FOR FABRICATION
October-17-2008
DRAFTSMAN _____
ENGINEER _____

PROPRIETARY

THIS DRAWING AND THE IDEAS AND INFORMATION INCLUDED IN THIS DRAWING ARE PROPRIETARY AND ARE NOT TO BE REPRODUCED, DISTRIBUTED OR DISCLOSED IN ANY MANNER, WITHOUT THE PRIOR, WRITTEN CONSENT OF A DULY AUTHORIZED OFFICER OF HELMERICH & PAYNE INT'L DRILLING CO.

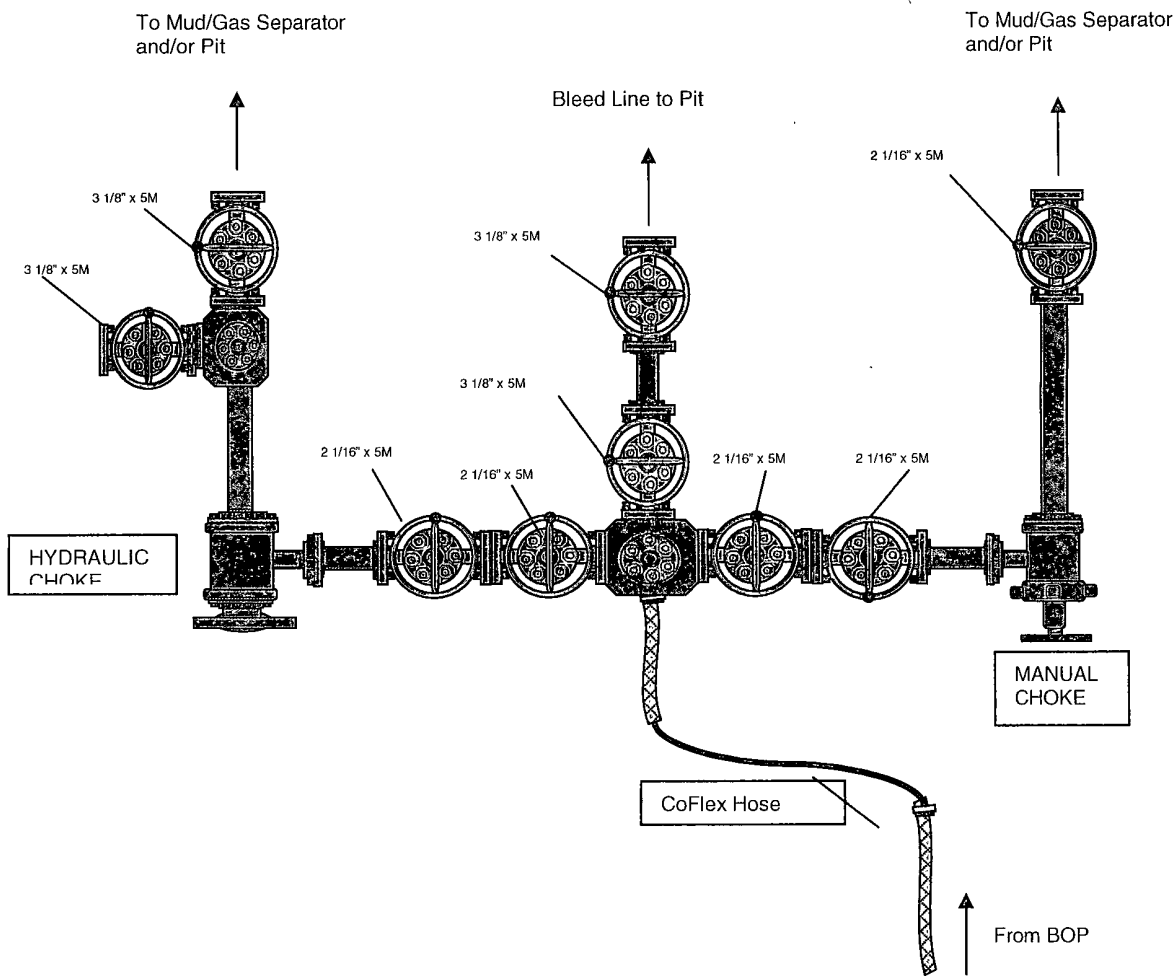


HELMERICH & PAYNE
INTERNATIONAL DRILLING CO.

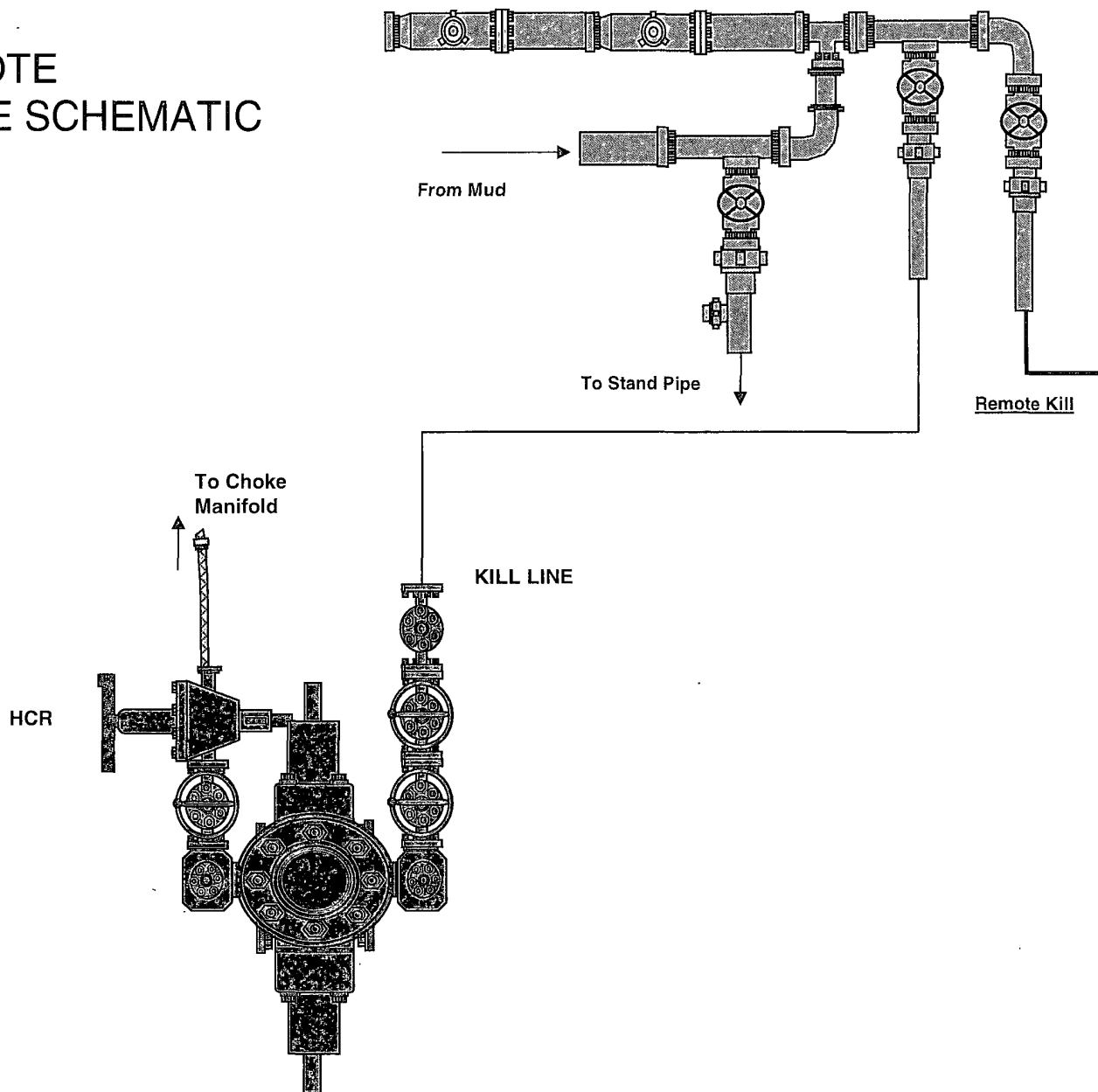
CHOKE MANIFOLD
DETAIL ARRANGEMENT

		ENGINEERING APPROVAL		DATE	TITLE			
					CHOKE MANIFOLD DETAIL ARRANGEMENT			
					CUSTOMER OXY SOUTH AMERICA			
					PROJECT F&M			
					DRAWN JAV		DATE 01/07/08	DWG NO
					SCALE 1 1/2"=1'		SHEET 2 OF	OX-D0079
REV	DATE	DESCRIPTION		BY	REV			
	10-17-05	ADDED QTY (1) ITEM 2 & ITEM 12		MWL				
	09-25-06	ADD DIM. INDICATION FOR THE DIFFERENT SIZE DIA. CHOKE		MWL				
	3/3/06	REVISED CONFIGURATION ACCORDING ITEMS 7 - 10		RYM				

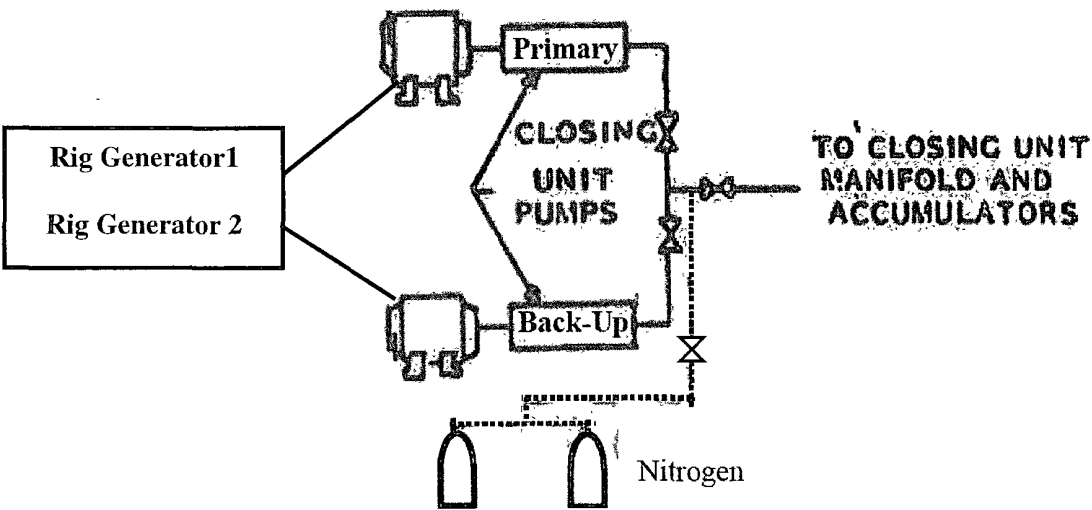
5M Choke / BOP / Remote Kill Line Diagram
H&P Flex IV



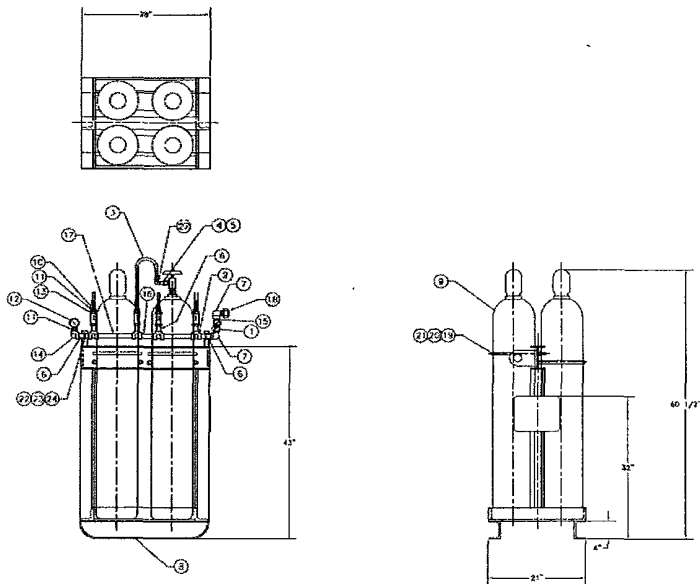
5M REMOTE KILL LINE SCHEMATIC

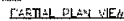


Dual Electric System including back up Nitrogen system for Operating Closing Unit Pumps



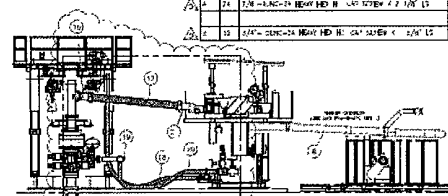
Nitrogen Bottle System





ALTERNATE FLOWLINE ARRANGEMENT
(FOR 415 345 THRU 347 ONLY)

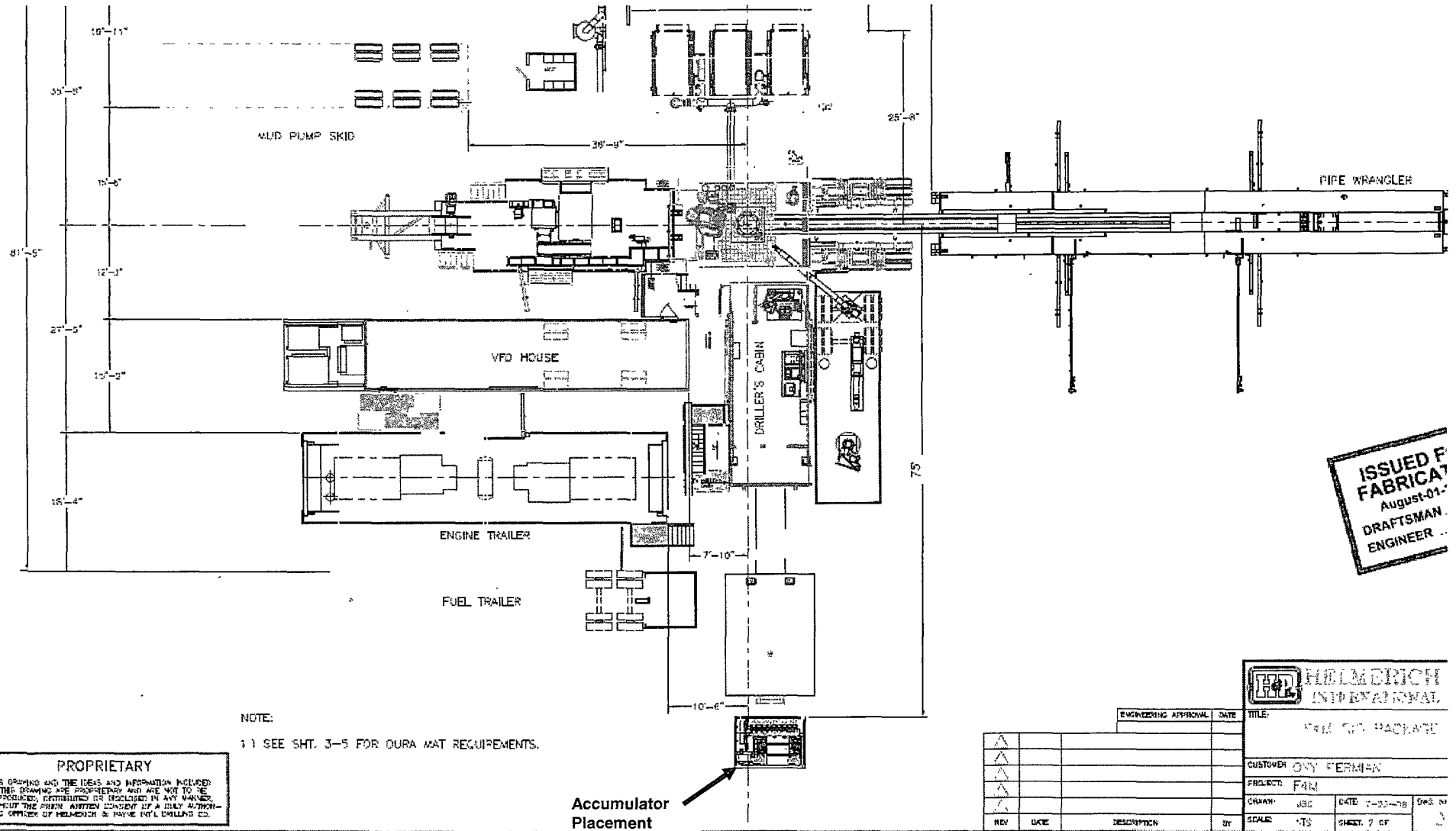
ISSUED FOR
FABRICATION
October 23-2008
DRAFTSMAN
ENGINEER


HELMERICH & PAYNE
INTERNATIONAL DRILLING CO.[illegible]

PROPRIETARY

THE DESIGN AND THE TEST AND INFORMATION INCLUDED IN THE DESIGN ARE PROPRIETARY AND ARE NOT TO BE REPRODUCED, COPIED, OR OTHERWISE USED IN ANY MANNER WITHOUT THE WRITTEN APPROVAL OF THE BULL GROUP.

Rig Layout including accumulator modified placement



CERTIFICATE OF CONFORMITY

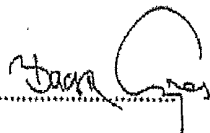
Supplier : CONTITECH RUBBER INDUSTRIAL KFT.
Equipment : 6 pcs. Choke and Kill Hose with installed couplings
Type : 3" x 10,67 m WP: 10000 psi
Supplier File Number : 412638
Date of Shipment : April. 2008
Customer : Phoenix Beattie Co.
Customer P.o. : 002491
Referenced Standards
/ Codes / Specifications : API Spec 16 C
Serial No.: 52754,52755,52776,52777,52778,52782

STATEMENT OF CONFORMITY

We hereby certify that the above items/equipment supplied by us are in conformity with the terms, conditions and specifications of the above Purchaser Order and that these items/equipment were fabricated inspected and tested in accordance with the referenced standards, codes and specifications and meet the relevant acceptance criteria and design requirements.

COUNTRY OF ORIGIN HUNGARY/EU

Signed :



Contitech Rubber
Industrial Kft.
Quality Control Dept.
(1)

Position: Q.C. Manager

Date: 04. April. 2008

Page: 1/1

Page: 1/1

[illegible]

We hereby certify that these goods have been inspected by our Quality Management System, and to the best of our knowledge are found to conform to relevant industry standards within the requirements of the purchase order as issued to Phoenix Beattie Corporation.

05/23/09

Coflex Hose Certification

Coflex Hose Certification

Form No 100/12



Phoenix Beattie Corp

11535 Brittonmore Park Drive
Houston, TX 77041
Tel: (832) 327-0141
Fax: (832) 327-0148
E-mail: mail@phoenixbeattie.com
www.phoenixbeattie.com

Delivery Note

Customer Order Number	370-369-001	Delivery Note Number	003078	Page	1
Customer / Invoice Address HELMERICH & PAYNE INT'L DRILLING CO 1437 SOUTH BOULDER TULSA, OK 74119		Delivery / Address HELMERICH & PAYNE IDC ATTN: JOE STEPHENSON - RIG 370 13609 INDUSTRIAL ROAD HOUSTON, TX 77015			

Customer Acc No	Phoenix Beattie Contract Manager	Phoenix Beattie Reference	Date
H01	JJL	006330	05/23/2008

Item No	Beattie Part Number / Description	Qty Ordered	Qty Sent	Qty To Follow
1	HP10CK3A-35-4F1 3" 10K 16C C&K HOSE x 35ft OAL CW 4.1/16" API SPEC FLANGE E/ End 1: 4.1/16" 10Kpsi API Spec 6A Type 6BX Flange End 2: 4.1/16" 10Kpsi API Spec 6A Type 6BX Flange c/w BX155 Standard ring groove at each end Suitable for H2S Service Working pressure: 10,000psi Test pressure: 15,000psi Standard: API 16C Full specification Armor Guarding: Included Fire Rating: Not Included Temperature rating: -20 Deg C to +100 Deg C	1	1	0
2	SECK3-HPF3 LIFTING & SAFETY EQUIPMENT TO SUIT HP10CK3-35-F1 2 x 160mm ID Safety Clamps 2 x 244mm ID Lifting Collars & element C's 2 x 7ft Stainless Steel wire rope 3/4" OD 4 x 7.75t Shackles	1	1	0
3	SC725-200CS SAFETY CLAMP 200MM 7.25T C/S GALVANISED	1	1	0

Continued...

All goods remain the property of Phoenix Beattie until paid for in full. Any damage or shortage on this delivery must be advised within 5 days. Returns may be subject to a handling charge.

Coflex Hose Certification



Fluid Technology

Quality Document

QUALITY CONTROL INSPECTION AND TEST CERTIFICATE				CERT. N°: 746	
PURCHASER: Phoenix Beattie Co.				P.O. N°: 002491	
CONTITECH ORDER N°: 412638		HOSE TYPE: 3" ID Choke and Kill Hose			
HOSE SERIAL N°: 52777		NOMINAL / ACTUAL LENGTH: 10,67 m			
W.P. 68,96 MPa	10000	psi	T.P. 103,4 MPa	15000	psi
			Duration:	60	min.
<p>Pressure test with water at ambient temperature</p> <p align="center">See attachment. (1 page)</p> <p>↑ 10 mm = 10 Min. → 10 mm = 25 MPa</p>					
COUPLINGS					
Type	Serial N°		Quality	Heat N°	
3" coupling with 4 1/16" Flange end	917	913	AISI 4130	T7998A	
			AISI 4130	26984	
INFOCHIP INSTALLED				API Spec 16 C Temperature rate: "B"	
All metal parts are flawless					
WE CERTIFY THAT THE ABOVE HOSE HAS BEEN MANUFACTURED IN ACCORDANCE WITH THE TERMS OF THE ORDER AND PRESSURE TESTED AS ABOVE WITH SATISFACTORY RESULT.					
Date:	Inspector		Quality Control		
04. April. 2008			 Continental Rubber Industrial Kft. Quality Control Dept. (1)		

Coflex Hose Certification

Form No 100/12

**Phoenix Beattie Corp**

11535 Brittmore Park Drive
Houston, TX 77041
Tel: (832) 327-0141
Fax: (832) 327-0148
E-mail: sales@phoenixbeattie.com
www.phoenixbeattie.com

Delivery Note

Customer Order Number	370-369-001	Delivery Note Number	003078	Page	2
Customer / Invoice Address HELMERICH & PAYNE INT'L DRILLING CO 1437 SOUTH BOULDER TULSA, OK 74119		Delivery / Address HELMERICH & PAYNE IDC ATTN: JOE STEPHENSON - RIG 370 13609 INDUSTRIAL ROAD HOUSTON, TX 77015			

Customer Acc No	Phoenix Beattie Contract Manager	Phoenix Beattie Reference	Date
H01	JJL	006330	05/23/2008

Item No	Beattie Part Number / Description	Qty Ordered	Qty Sent	Qty To Follow
4	SC725-132GS SAFETY CLAMP 132MM 7.25T C/S GALVANIZED C/W BOLTS	1	1	0
5	00CERT-HYDRO HYDROSTATIC PRESSURE TEST CERTIFICATE	1	1	0
6	00CERT-LOAD LOAD TEST CERTIFICATES	1	1	0
7	00FREIGHT INBOUND / OUTBOUND FREIGHT PRE-PAY & ADD TO FINAL INVOICE NOTE: MATERIAL MUST BE ACCOMPANIED BY PAPERWORK INCLUDING THE PURCHASE ORDER, RIG NUMBER TO ENSURE PROPER PAYMENT	1	1	0

Phoenix Beattie Inspection Signature : 

Received In Good Condition : Signature

Print Name

Date

All goods remain the property of Phoenix Beattie until paid for in full. Any damage or shortage on this delivery must be advised within 5 days.
Returns may be subject to a handling charge.

DISTRICT I--- CHECKLIST FOR INTENTS TO DRILL

38935

Operator OXY OGRID # 16696
Well Name & # COMANCHO PW FBO #1 Surface Type (F)(S) (P)
Location: UL D, Sect 19, Township 22 s, RNG 23 e, Sub-surface Type (F)(S) (P)

- A. Date C101 rec'd 11 / 16 / 2011 C101 reviewed 11 / 22 / 2011
- B. 1. Check mark, Information is OK on Forms:
OGRID ✓, BONDING ✓, PROP CODE ✓, WELL # ✓, SIGNATURE ✓
2. Inactive Well list as of: 11 / 22 / 2011 # wells 1848, # Inactive wells 8
- a. District Grant APD but see number of inactive wells:
No letter required ✓; Sent Letter to Operator , to Santa Fe
3. Additional Bonding as of: 11 / 22 / 2011
- a. District Denial because operator needs addition bonding:
No Letter required ✓; Sent Letter to Operator , To Santa Fe
- b. District Denial because of Inactive well list and Financial Assurance:
No Letter required ✓; Sent Letter to Operator , To Santa Fe
- C. C102 YES ✓, NO , Signature ✓
1. Pool WADCAT, YESO, Code 97867
- a. Dedicated acreage 40, What Units D
- b. SUR. Location Standard ✓: Non-Standard Location
- c. Well shares acres: Yes , No ✓, # of wells plus this well #
2. 2nd. Operator in same acreage, Yes , No
Agreement Letter , Disagreement letter
3. Intent to Directional Drill Yes , No
- a. Dedicated acreage , What Units
- b. Bottomhole Location Standard , Non-Standard Bottomhole
4. Downhole Commingle: Yes , No
- a. Pool #2 , Code , Acres
Pool #3 , Code , Acres
Pool #4 , Code , Acres
5. POTASH Area Yes , No ✓
- D. Blowout Preventer Yes ✓, No
- E. H2S Yes ✓, No
- F. C144 Pit Registration Yes ✓, No
- G. Does APD require Santa Fe Approval:
1. Non-Standard Location: Yes , No ✓, NSL #
2. Non-Standard Proration: Yes , No ✓, NSP #
3. Simultaneous Dedication: Yes , No ✓, SD #
Number of wells Plus #
4. Injection order Yes , No ✓; PMX # or WFX #
5. SWD order Yes , NO ✓; SWD #
6. DHC from SF ; DHC-HOB ; Holding
7. OCD Approval Date / / API #30-0 15-39674
8. Reviewers