

DISTRICT I  
1625 N. FRENCH DR., HOBBS, NM 88240

DISTRICT II  
1301 W. GRAND AVENUE, ARTESIA, NM 88210

DISTRICT III  
1000 RIO BRAZOS RD., AZTEC, NM 87410

DISTRICT IV  
11885 S. ST. FRANCIS DR., SANTA FE, NM 87505

State of New Mexico  
Energy, Minerals and Natural Resources Department

OIL CONSERVATION DIVISION  
11885 SOUTH ST. FRANCIS DR.  
Santa Fe, New Mexico 87505

Form C-102

Revised October 12, 2005

Submit to Appropriate District Office

State Lease - 4 Copies

Fee Lease - 3 Copies

WELL LOCATION AND ACREAGE DEDICATION PLAT

☐ AMENDED REPORT

APT Number 30-015-38283	Pool Code 26770	Mar. Local Fren; Glorieta, Yeso	Pool Name
Property Code OK 29742	Property Name SKELLY UNIT	Well Number 754	
OGRID No. OK 4323	Operator Name Chevron USA, Inc.	Elevation 3840'	

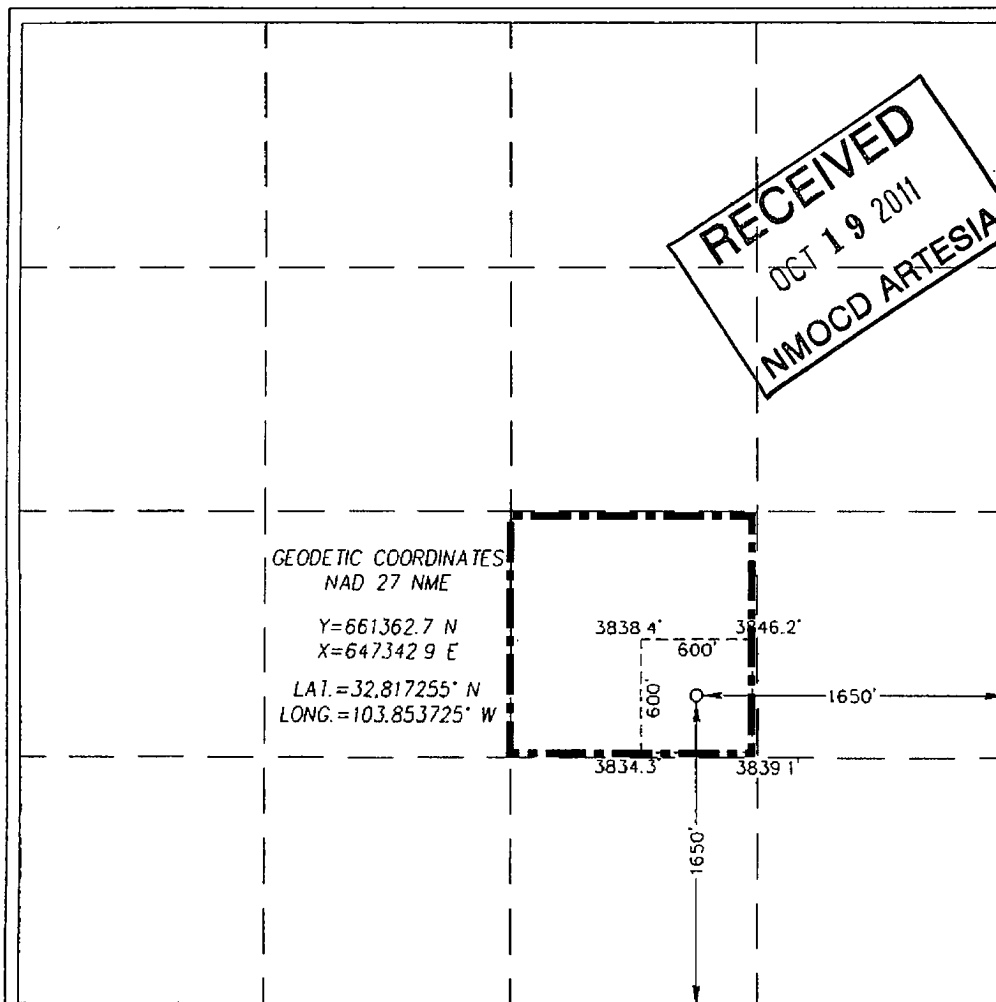
Surface Location

UL or lot No.	Section	Township	Range	Lot Idn	Feet from the	North/South line	Feet from the	East/West line	County
J	22	17-S	31-E		1650	SOUTH	1650	EAST	EDDY

Bottom Hole Location If Different From Surface

UL or lot No.	Section	Township	Range	Lot Idn	Feet from the	North/South line	Feet from the	East/West line	County
Dedicated Acres 40	Joint or Infill	Consolidation Code	Order No.						

NO ALLOWABLE WILL BE ASSIGNED TO THIS COMPLETION UNTIL ALL INTERESTS HAVE BEEN CONSOLIDATED  
OR A NON-STANDARD UNIT HAS BEEN APPROVED BY THE DIVISION



OPERATOR CERTIFICATION

I hereby certify that the information herein is true and complete to the best of my knowledge and belief, and that this organization either owns a working interest or unleased mineral interest in the land including the proposed bottom hole location or has a right to drill this well at this location pursuant to a contract with an owner of such mineral or working interest, or to a voluntary pooling agreement or a compulsory pooling order heretofore entered by the division.

Netha Aaron 10/13/11  
Signature Date  
Netha Aaron  
Printed Name

SURVEYOR CERTIFICATION

I hereby certify that the well location shown on this plat was plotted from field notes of actual surveys made by me or under my supervision, and that the same is true and correct to the best of my belief.

AUGUST 20 2010  
Date Surveyed  
Signature & Seal of Professional Surveyor  
RONALD EIDSON 3239  
Certificate No. 12641  
RONALD EIDSON 3239