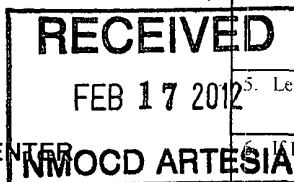


OCD-ARTESIA

Form 3160-3  
(February 2005)

UNITED STATES  
DEPARTMENT OF THE INTERIOR  
BUREAU OF LAND MANAGEMENT  
APPLICATION FOR PERMIT TO DRILL OR REENTER



FORM APPROVED  
OMB NO 1004-0137  
Expires: March 31, 2007

1a Type of Work <input checked="" type="checkbox"/> DRILL <input type="checkbox"/> REENTER		5. Lease Serial No. NM-61358
1b Type of Well <input checked="" type="checkbox"/> Oil Well <input type="checkbox"/> Gas Well <input type="checkbox"/> Other <input type="checkbox"/> Single Zone <input type="checkbox"/> Multiple Zone		6. Indian, Allottee or Tribe Name N/A
2 Name of Operator Yates Petroleum Corporation 025575		7 If Unit or CA Agreement, Name and No N/A
3a Address 105 South Fourth Street, Artesia, NM 88210	3b Phone No (include area code) 505-748-1471	8 Lease Name and Well No Wolf "AJA" Federal #19H [12900]
4 Location of well (Report location clearly and in accordance with any State requirements *) At surface 1920' FSL & 330' FEL At proposed prod zone 1980' FSL & 330' FWL		9 API Well No 30-015-39965
10 Field and Pool, or Exploratory Lost Tank Delaware [40299]		11 Sec, T, R, M, or Blk And Survey or Area Sec. 25-T21S-R31E
12 Distance in miles and direction from the nearest town or post office* 38 miles northeast of Loving, NM		13 State NM
15 Distance from proposed* location to nearest property or lease line, ft. (Also to nearest drlg unit line, if any) 330	16 No of acres in lease 880.00	17 Spacing Unit dedicated to this well N2S2
18 Distance from proposed location* to nearest well, drilling, completed, applied for, on this lease, ft	19 Proposed Depth 8400 TIVB on 10' VD & 12807 MD	20 BLM/ BIA Bond No on file NATIONWIDE BOND #NMB000434
21 Elevations (Show whether DF, KDB, RT, GL, etc ) 3697' GL	22 Approximate date work will start* June 30, 2010	23 Estimated duration 50 days

24 Attachments

The following, completed in accordance with the requirements of Onshore Oil and Gas Order No 1 shall be attached to this form

- |  |   |
|--|---|
| 1 Well plat certified by a registered surveyor   | 4 Bond to cover the operations unless covered by existing bond on file(sec item 20 above) |
| 2 A Drilling Plan  | 5 Operator certification  |
| 3 A Surface Use Plan ( if the location is on National Forest System Lands, the SUPO must be filed with the appropriate Forest Service Office). | 6 Such other site specific information and/ or plans as may be required by the BLM        |

25. Signature <i>Clifton May</i>	Name (Printed/ Typed) Clifton May	Date 5/13/2010
Title Land Regulatory Agent		
Approved By (Signature) <i>Douglas J. Burger</i>	Name (Printed/ Typed) Douglas J. Burger	Date FEB - 9 2012
Title for STATE DIRECTOR	Office NM STATE OFFICE	

Application approval does not warrant or certify that the applicant holds legal or equitable title to those rights in the subject lease which would entitle the applicant to cc operations thereon.

Conditions of approval, if any, are attached

**APPROVAL FOR TWO YEARS**

Title 18 U.S.C. Section 1001 and Title 43 U.S.C. Section 1212, make it a crime for any person knowingly and wilfully to make to any department or agency of the United States any false, fictitious or fraudulent statements or representations as to any matter within its jurisdiction

\*(Instructions on page 2)

CARLSBAD CONTROLLED WATER BASIN

**APPROVAL SUBJECT TO  
GENERAL REQUIREMENTS  
AND SPECIAL STIPULATIONS  
ATTACHED**

**SEE ATTACHED FOR  
CONDITIONS OF APPROVAL**

CERTIFICATION  
YATES PETROLEUM CORPORATION  
Wolf "AJA" Federal #19H  
1920' FSL & 330' FEL, Surface Hole  
1980' FSL & 330' FWL, Bottom Hole  
Section 25-T21S-R31E  
Eddy County, New Mexico

I hereby certify that I or the company I represent, have inspected the drill site and access route proposed herein; that the company I represent is familiar with the conditions which currently exist; that full knowledge of state and federal laws applicable to this operation; that the statements made in this APD package are, to the best of my knowledge, true and correct; and that the work associated with the operations proposed herein will be performed in conformity with this APD package and the terms and conditions under which it is approved. I also certify that the company I represent is responsible for the operations conducted under this application. These statements are subject to the provisions of 18 U.S.C. 1001 for the filing of false statements.

Executed this 13th day of May, 2010.

Printed Name Clifton May

Signature Clifton May

Position Title Land Regulatory Agent

Address 105 South Fourth Street, Artesia, NM 88210

Telephone 575-748-4347

E-mail (optional) cliff@yatespetroleum.com

Field Representative (if not above signatory) Tim Bussell

Address (if different from above) Same

Telephone (if different from above) 575-748-4221

E-mail (optional) \_\_\_\_\_

DISTRICT I  
1625 N. French Dr., Hobbs, NM 88240

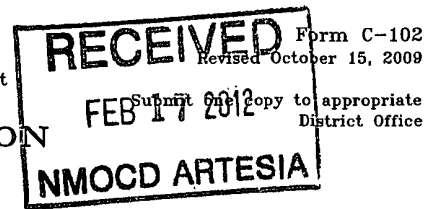
DISTRICT II  
1301 W. Grand Avenue, Artesia, NM 88210

DISTRICT III  
1000 Rio Brazos Rd., Aztec, NM 87410

DISTRICT IV  
1220 S. St. Francis Dr., Santa Fe, NM 87505

State of New Mexico  
Energy, Minerals and Natural Resources Department

OIL CONSERVATION DIVISION  
1220 South St. Francis Dr.  
Santa Fe, New Mexico 87505



WELL LOCATION AND ACREAGE DEDICATION PLAT

☐ AMENDED REPORT

API Number 30-015-39965	Pool Code 40299	Pool Name Lost Tank Delaware
Property Code 12900	Property Name WOLF "AJA" FEDERAL	Well Number 19H
GRID No. 025575	Operator Name YATES PETROLEUM CORP.	Elevation 3697'

Surface Location

UL or lot No.	Section	Township	Range	Lot Idn	Feet from the	North/South line	Feet from the	East/West line	County
I	25	21 S	31 E		1920	SOUTH	330	EAST	EDDY

Bottom Hole Location If Different From Surface

UL or lot No.	Section	Township	Range	Lot Idn	Feet from the	North/South line	Feet from the	East/West line	County
L	25	21 S	31 E		1980	SOUTH	330	WEST	EDDY

Dedicated Acres	Joint or Infill	Consolidation Code	Order No.
160 N2S2			

NO ALLOWABLE WILL BE ASSIGNED TO THIS COMPLETION UNTIL ALL INTERESTS HAVE BEEN CONSOLIDATED  
OR A NON-STANDARD UNIT HAS BEEN APPROVED BY THE DIVISION

<p><b>PROPOSED BOTTOM HOLE LOCATION</b> Lat - N 32°26'51.95" Long - W 103°44'20.34" NMSPCE - N 527137.236 E 724679.128 (NAD-83)</p>	<p><b>SURFACE LOCATION</b> Lat - N 32°26'51.32" Long - W 103°43'26.44" NMSPCE - N 527100.392 E 729298.693 (NAD-83)</p>	<p><b>OPERATOR CERTIFICATION</b></p> <p>I hereby certify that the information contained herein is true and complete to the best of my knowledge and belief, and that this organization either owns a working interest or unleased mineral interest in the land including the proposed bottom hole location or has a right to drill this well at this location pursuant to a contract with an owner of such a mineral or working interest, or to a voluntary pooling agreement or a compulsory pooling order heretofore entered by the division.</p> <p>Clifton May 10/11/10 Signature Date</p> <p>Clifton May Printed Name</p>
<p><b>Project Area</b></p> <p><b>Producing Zone</b></p> <p><b>Penetration Point</b> 1937' FSL &amp; 1650' FEL</p>		<p><b>SURVEYOR CERTIFICATION</b></p> <p>I hereby certify that the well location shown on this plat was plotted from field notes of actual surveys made by me or under my supervision, and that the same is true and correct to the best of my belief.</p> <p>MARCH 29 2010 Date Surveyed</p> <p>Signature &amp; Seal of Professional Surveyor</p> <p>7977 No. 2248</p> <p>Certificate No. 7977 Jones 7977</p> <p>BASIN SURVEYS</p>

YATES PETROLEUM CORPORATION  
 Wolf "AJA" Federal #19H  
 1920' FSL and 330' FEL Surface Hole Location  
 1980' FSL and 330' FWL Bottom Hole Location  
 Section 25-T21S-R31E  
 Eddy County, New Mexico

1. The estimated tops of geologic markers are as follows:
 

Rustler	798'	Brushy Canyon Mkr	8210'	8234'-MD
Top of Salt	1118'	Target-Basal Sand	8400'-Oil	9507'-MD
Bottom of Salt	4031'	Bone Spring	8507'-Oil	
Bell Canyon	4518'	TD (Pilot Hole)	<del>8507'</del>	
Cherry Canyon	5576'-Oil	MTD (Lateral)	<del>8507'</del>	12807'-MD
Brushy Canyon	7305'-Oil			
2. The estimated depths at which anticipated water, oil or gas formations are expected to be encountered:

Water: 150'  
 Oil or Gas: Oil Zones: 5576', 7305', 8400' & 8507'.

3. Pressure Control Equipment <sup>13 3/8"</sup> BOPE will be installed on the 13 3/8" and the 9 5/8" casing and rated for 3000# BOP System. Pressure tests will be conducted before drilling out from under all casing strings, which are set and cemented in place. Blowout Preventer controls will be installed prior to drilling the surface plug and will remain in use until the well is completed or abandoned. Preventers will be inspected and operated at least daily to ensure good mechanical working order, and this inspection recorded on the daily drilling report. See Exhibit B.
4. Auxiliary Equipment: Kelly cock, pit level indicators, flow sensor equipment, and a sub with full opening valve to fit the drill pipe and collars will be available on the rig floor in the open position at all times for use when Kelly is not in use.
5. THE PROPOSED CASING AND CEMENTING PROGRAM:

A. Casing Program: All new casing to be used

<u>Hole Size</u>	<u>Casing Size</u>	<u>Wt./Ft</u>	<u>Grade</u>	<u>Coupling</u>	<u>Interval</u>	<u>Length</u>
17 1/2"	13 3/8"	48#	H-40	ST&C	0-900'	900'
12 1/4"	9 5/8"	40#	J-55	LT&C	0-100'	100'
12 1/4"	9 5/8"	36#	J-55	LT&C	100'-3300'	3200'
12 1/4"	9 5/8"	40#	J-55	LT&C	3300'-4250'	950'
12 1/4"	9 5/8"	40#	HCK-55	LT&C	4250'-4600'	350'
8 3/4" Pilot Hole						
7 7/8"	5 1/2"	17#	P-110	LT&C	0'-12807'	<del>12815'</del> <sup>12807'</sup>
Minimum Casing Design Factors: Burst 1.0, Tensile Strength 1.8, Collapse 1.125						

B. CEMENTING PROGRAM:

Surface Casing: Lead with 600 sacks C Lite (Yld 1.64 Wt. 14.80). Tail in with 250 sacks Class C (Yld. 1.34 Wt. 14.80) TOC surface.

Intermediate Casing: Lead with 1425 sacks of Poz C (Yld. 1.96 Wt. 12.60). Tail in with 100 sacks Class C (Yld 1.34 Wt 14.80). TOC surface

Production Casing: Cement to be done in two stages with stage tools approx. 6000'.

Stage One: Cement with 1650 sacks Pecos Valley Lite (Yld 1.83 Wt 13.00). TOC 6000'.

Stage Two: Lead with 300 sacks Lite Crete (Yld. 2.66 Wt 9.90). Tail in with 100 sacks Pecos Valley Lite (Yld. 1.41 Wt 13.00). TOC ~~4100'~~ *Surface - See COA*

*See COA*

Pilot hole drilled vertically to 8607'. Well will be plugged back with a 400'-500' kick off plug, then kicked off at 7914' and directionally drilled at 12 degrees per 100' with a 7 7/8" hole to 9507' MD (8400' TVD). 7 7/8" hole will then be drilled to 12807' MD (8400' TVD) where 5 1/2" casing will be run and cemented in place. Penetration point of producing zone will be encountered at 1937' FSL & 1650' FEL, 25-21S-31E. Deepest TVD in the pilot hole is ~~8607'~~ *8600'*. Deepest TVD in the lateral will be 8400'.

6. MUD PROGRAM AND AUXILIARY EQUIPMENT:

Interval	Type	Weight	Viscosity	Fluid Loss
0-900'	Fresh Water	8.60-9.20	29-36	N/C
900'-4600'	Brine Water	10.00-10.20	28-30	N/C
4600'-8607'	Cut Brine (Pilot Hole)	8.90-9.10	28-29	N/C
7914'-12807'	Cut Brine (Lateral Section)	9.00-9.30	28-34	<=15

Sufficient mud material(s) to maintain mud properties, control lost circulation and contain a blow out will be available at the well site during drilling operations. Rig personnel will check mud hourly.

7. EVALUATION PROGRAM:

Samples: 30' samples to 4400'. 10' samples from 4400' to TD. Mudloggers on at surface casing

Logging: Platform Hals, CMR (DLWR), NGT - *See COA*

Coring: None anticipated

DST's: None Anticipated

8. ABNORMAL CONDITIONS, BOTTOM HOLE PRESSURE, AND POTENTIAL HAZARDS:

Maximum Anticipated BHP:

0'-900'	431 PSI
900'-4600'	2440 PSI
4600'-8607'	4073 PSI

Abnormal Pressures Anticipated: None

Lost Circulation Zones Anticipated: ~~None~~ *See COA*

H2S Zones Anticipated: None Anticipated

Maximum Bottom Hole Temperature: 150 F

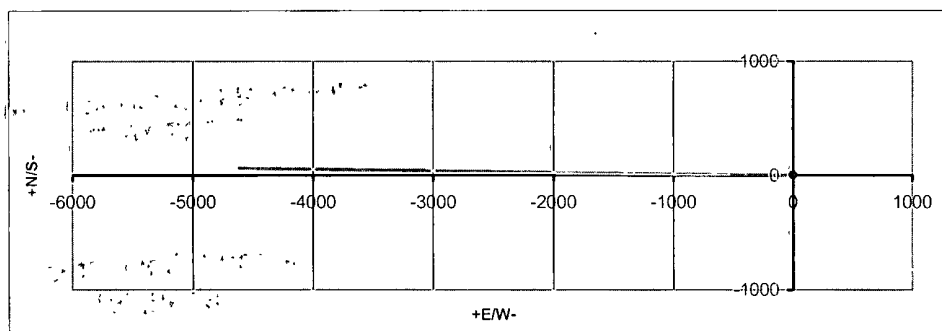
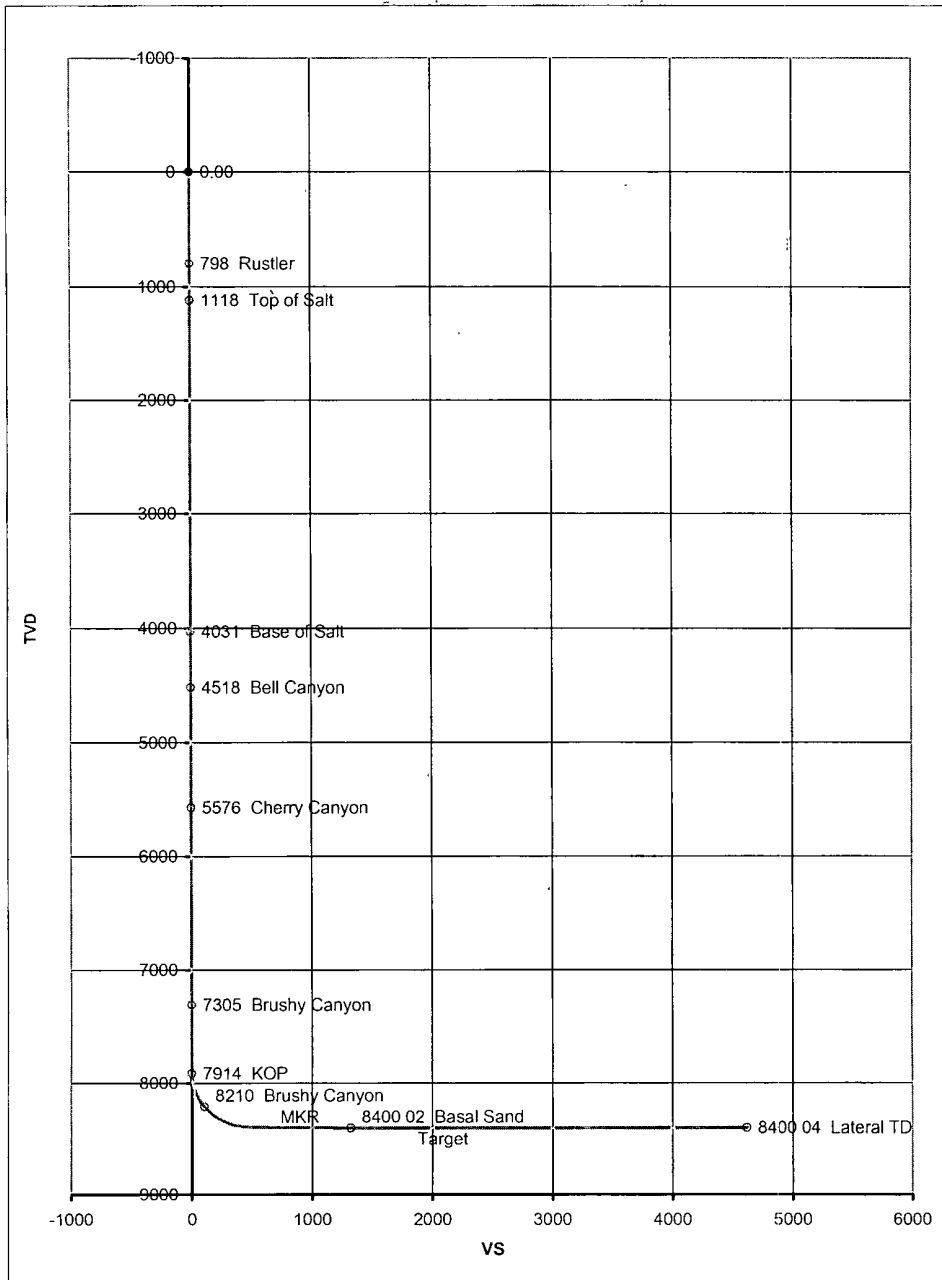
9. ANTICIPATED STARTING DATE:

Plans are to drill this well as soon as possible after receiving approval. It should take approximately 60 days to drill the well with completion taking another 20 days.

Co: Yates Petroleum Corporation			Units: Feet, ° 7100ft		VS Az: 0.00		Tgt TVD:	
Drillers: 0			Elevation: 0.00		Tgt Radius:		Tgt MD:	
Well Name: Wolf AJA Federal #19H			Northing: 0.00		Tgt N/S:		Tgt Displ.:	
Location: Sect. 25, 21S-31E			Easting: 0.00		Tgt E/W:		Method: Minimum Curvature	

No.	MD	CL	Inc.	Azi.	TVD	VS	+N/S-	+E/W-	BR	WR	DLS	Comments
1	0.00	0.00	0.00	0.00	0.00	0.00	0.00	0.00	0.00			
2	798.00	798.00	0.00	0.00	798.00	0.00	0.00	0.00	0.00	0.00	0.00	Rustler
3	1118.00	320.00	0.00	0.00	1118.00	0.00	0.00	0.00	0.00	0.00	0.00	Top of Salt
4	4031.00	2913.00	0.00	0.00	4031.00	0.00	0.00	0.00	0.00	0.00	0.00	Base of Salt
5	4518.00	487.00	0.00	0.00	4518.00	0.00	0.00	0.00	0.00	0.00	0.00	Bell Canyon
6	5576.00	1058.00	0.00	0.00	5576.00	0.00	0.00	0.00	0.00	0.00	0.00	Cherry Canyon
7	7305.00	1729.00	0.00	0.00	7305.00	0.01	0.01	0.00	0.00	0.00	0.00	Brushy Canyon
8	7914.00	7914.00	0.00	0.00	7914.00	0.01	0.01	0.00	0.00	0.00	0.00	KOP
9	7925.00	11.00	1.32	270.74	7925.00	0.01	0.01	-0.13	12.00	-811.46	12.00	
10	7950.00	25.00	4.32	270.74	7949.97	0.02	0.02	-1.36	12.00	0.00	12.00	
11	7975.00	25.00	7.32	270.74	7974.83	0.06	0.06	-3.89	12.00	0.00	12.00	
12	8000.00	25.00	10.32	270.74	7999.54	0.11	0.11	-7.72	12.00	0.00	12.00	
13	8025.00	25.00	13.32	270.74	8024.00	0.17	0.17	-12.84	12.00	0.00	12.00	
14	8050.00	25.00	16.32	270.74	8048.17	0.26	0.26	-19.24	12.00	0.00	12.00	
15	8075.00	25.00	19.32	270.74	8071.97	0.35	0.35	-26.89	12.00	0.00	12.00	
16	8100.00	25.00	22.32	270.74	8095.33	0.47	0.47	-35.77	12.00	0.00	12.00	
17	8125.00	25.00	25.32	270.74	8118.20	0.60	0.60	-45.86	12.00	0.00	12.00	
18	8150.00	25.00	28.32	270.74	8140.51	0.75	0.75	-57.14	12.00	0.00	12.00	
19	8175.00	25.00	31.32	270.74	8162.19	0.91	0.91	-69.57	12.00	0.00	12.00	
20	8200.00	25.00	34.32	270.74	8183.20	1.08	1.08	-83.12	12.00	0.00	12.00	
21	8225.00	25.00	37.32	270.74	8203.47	1.27	1.27	-97.75	12.00	0.00	12.00	
22	8233.27	8.27	38.31	270.74	8210.00	1.34	1.34	-102.82	11.99	0.00	11.99	Brushy Canyon MKR
23	8250.00	25.00	40.32	270.74	8222.95	1.47	1.47	-113.42	12.00	0.00	12.00	
24	8275.00	25.00	43.32	270.74	8241.58	1.69	1.69	-130.08	12.00	0.00	12.00	
25	8300.00	25.00	46.32	270.74	8259.31	1.91	1.91	-147.70	12.00	0.00	12.00	
26	8325.00	25.00	49.32	270.74	8276.09	2.15	2.15	-166.22	12.00	0.00	12.00	
27	8350.00	25.00	52.32	270.74	8291.88	2.40	2.40	-185.60	12.00	0.00	12.00	
28	8375.00	25.00	55.32	270.74	8306.64	2.67	2.67	-205.77	12.00	0.00	12.00	
29	8400.00	25.00	58.32	270.74	8320.32	2.94	2.94	-226.69	12.00	0.00	12.00	
30	8425.00	25.00	61.32	270.74	8332.89	3.21	3.21	-248.30	12.00	0.00	12.00	
31	8450.00	25.00	64.32	270.74	8344.30	3.50	3.50	-270.54	12.00	0.00	12.00	
32	8475.00	25.00	67.32	270.74	8354.54	3.80	3.80	-293.34	12.00	0.00	12.00	
33	8500.00	25.00	70.32	270.74	8363.57	4.10	4.10	-316.64	12.00	0.00	12.00	
34	8525.00	25.00	73.32	270.74	8371.37	4.40	4.40	-340.39	12.00	0.00	12.00	
35	8550.00	25.00	76.32	270.74	8377.92	4.72	4.72	-364.51	12.00	0.00	12.00	
36	8575.00	25.00	79.32	270.74	8383.19	5.03	5.03	-388.95	12.00	0.00	12.00	
37	8600.00	25.00	82.32	270.74	8387.18	5.35	5.35	-413.62	12.00	0.00	12.00	
38	8625.00	25.00	85.32	270.74	8389.87	5.67	5.67	-438.47	12.00	0.00	12.00	
39	8650.00	25.00	88.32	270.74	8391.26	5.99	5.99	-463.43	12.00	0.00	12.00	
40	8659.18	9.18	89.42	270.74	8391.44	6.11	6.11	-472.61	11.98	0.00	11.98	
41	9506.69	847.51	89.42	270.74	8400.02	17.06	17.06	-1320.00	0.00	0.00	0.00	Basal Sand Target
42	9506.69	0.00	89.42	270.74	8400.02	17.06	17.06	-1320.00	0.00	0.00	0.00	

No.	MD	CL	Inc.	Azi	TVD	VS	+N/S-	+E/W-	BR	WR	DLS	Comments
43	9511.52	4.83	90.00	270.75	8400.04	17.12	17.12	-1324.83	12.01	0.20	12.01	
44	12785.74	3274.22	90.00	270.75	8400.04	59.98	59.98	-4598.77	0.00	0.00	0.00	
45	12800.00	14.26	90.00	270.46	8400.04	60.13	60.13	-4613.03	0.00	-2.03	2.03	
46	12806.97	6.97	90.00	270.32	8400.04	60.18	60.18	-4620.00	0.00	-2.01	2.01	
47	12806.97	0.00	90.00	270.37	8400.04	60.18	60.18	-4620.00	0.00	0.00	0.00	Lateral TD

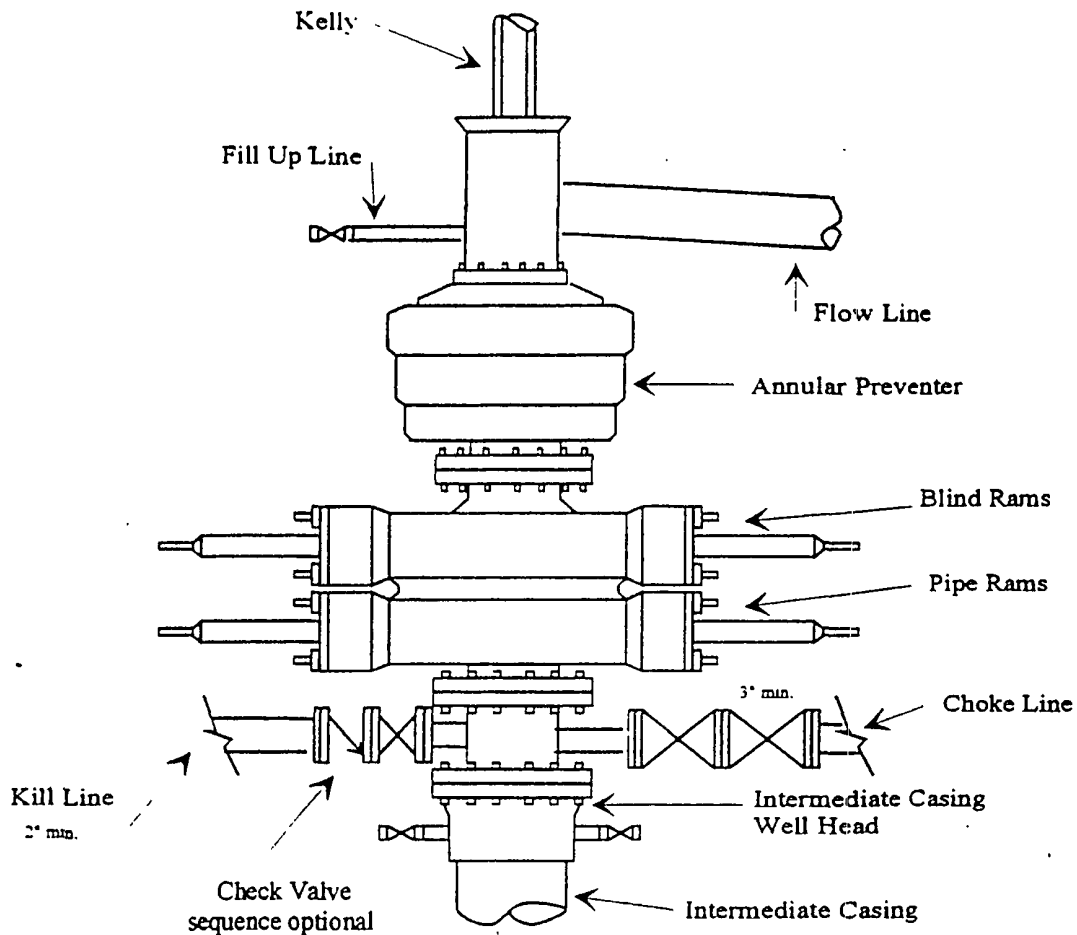




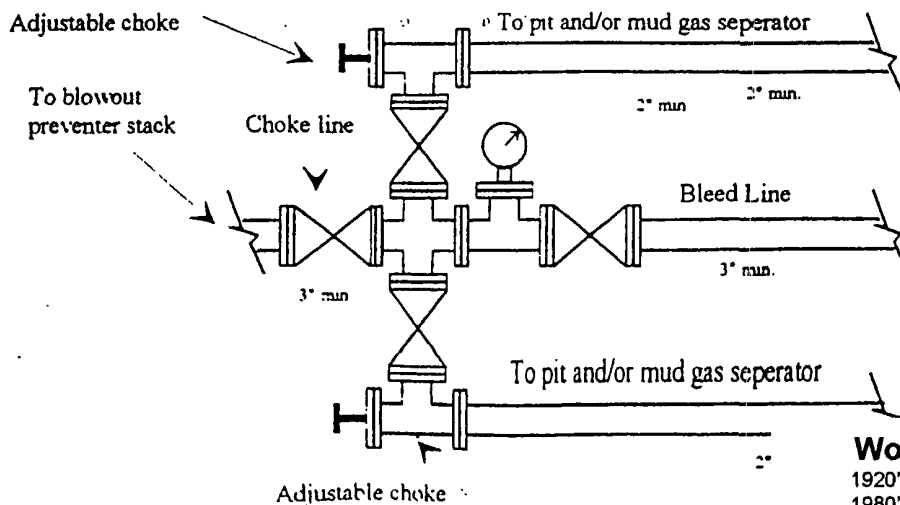
# Yates Petroleum Corporation

BOP-3

## Typical 3,000 psi Pressure System Schematic Annular with Double Ram Preventer Stack



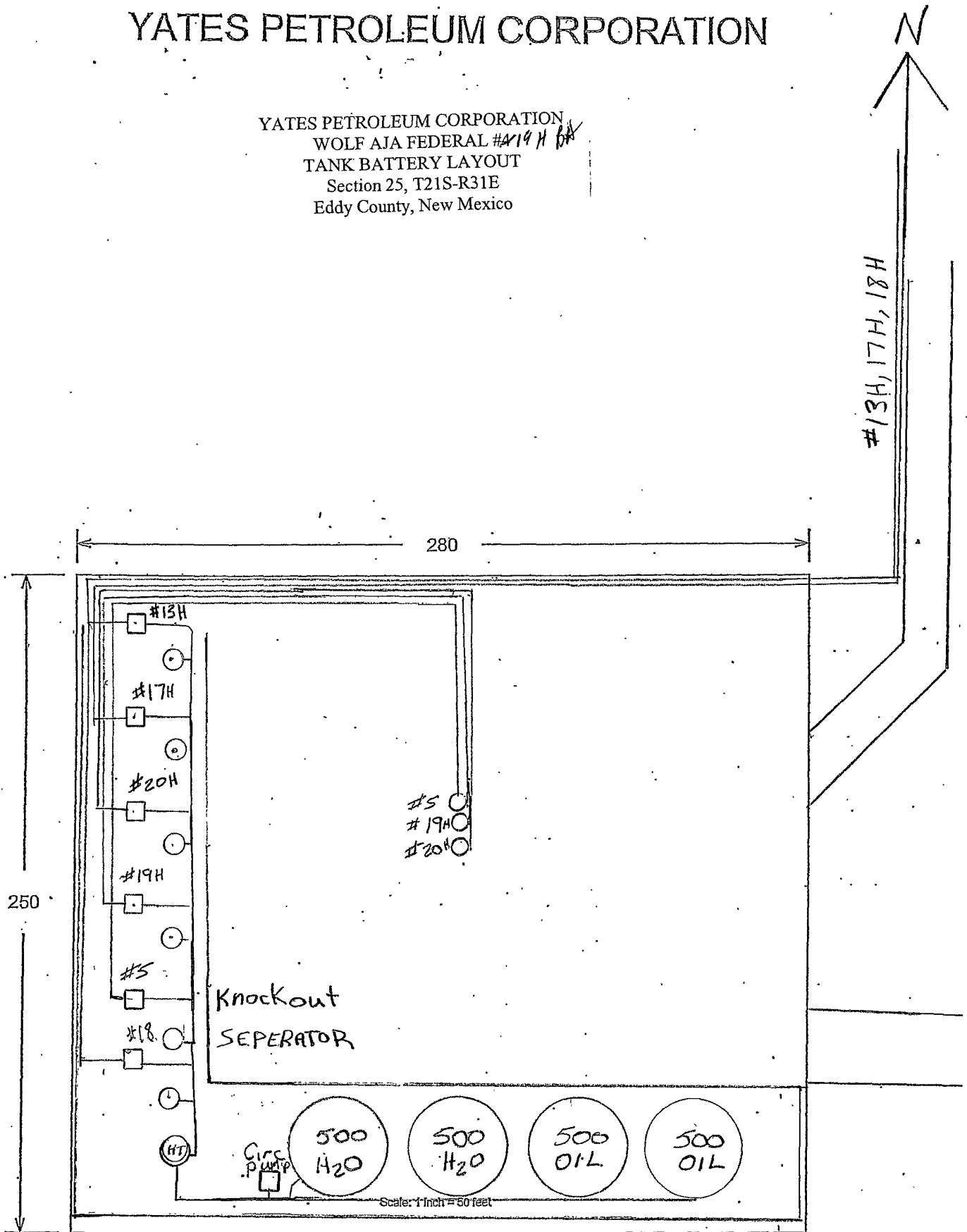
Typical 3,000 psi choke manifold assembly with at least these minimum features



**Wolf AJA Federal #19H**  
1920' FSL and 330' FEL Surface Hole  
1980' FSL and 330' FWL Bottom Hole  
Section 25-T21S-R31E  
Eddy County, New Mexico  
Exhibit "B"

# YATES PETROLEUM CORPORATION

YATES PETROLEUM CORPORATION  
WOLF AJA FEDERAL #414 H 6A  
TANK BATTERY LAYOUT  
Section 25, T21S-R31E  
Eddy County, New Mexico



**Yates Petroleum Corporation  
105 S. Fourth Street  
Artesia, NM 88210**

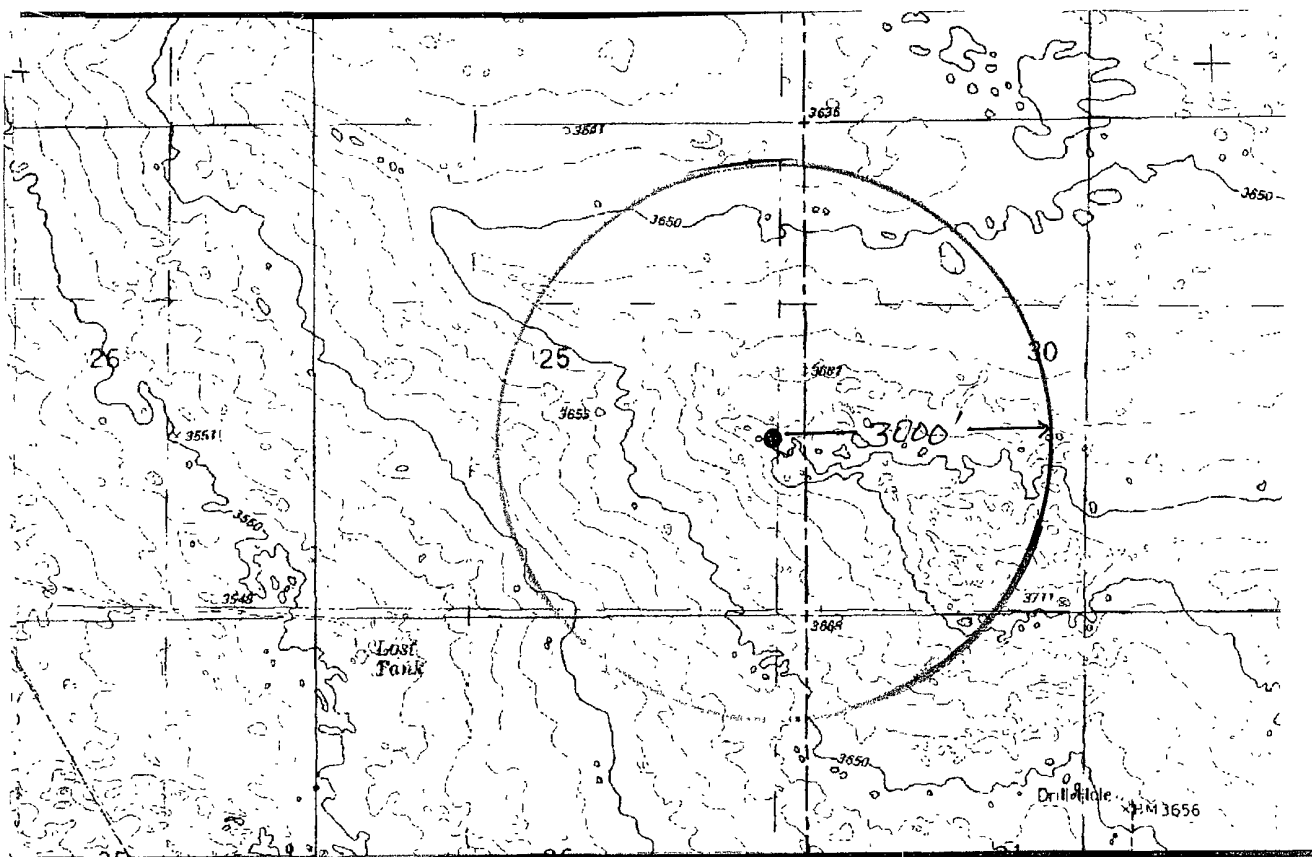
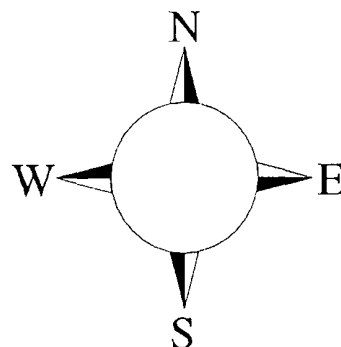
## **Hydrogen Sulfide (H<sub>2</sub>S) Contingency Plan**

**For**

**Wolf AJA Federal #19H  
1920' FSL and 330' FEL Surface Hole Location  
1980' FSL and 330' FWL Bottom Hole Location  
Section 25, T-21S, R-31E  
Eddy County NM**

## Wolf AJA Federal #19H

This is an open drilling site. H<sub>2</sub>S monitoring equipment and emergency response equipment will be used within 500' of zones known to contain H<sub>2</sub>S, including warning signs, wind indicators and H<sub>2</sub>S monitor.



**Assumed 100 ppm ROE = 3000'**  
**100 ppm H<sub>2</sub>S concentration shall trigger activation of this plan.**

## Emergency Procedures

In the case of a release of gas containing H<sub>2</sub>S, the first responder(s) must isolate the area and prevent entry by other persons into the 100 ppm ROE. Additionally the first responder(s) must evacuate any public places encompassed by the 100 ppm ROE. First responder(s) must take care not to injure themselves during this operation. Company and/or local officials must be contacted to aid in this operation. Evacuation of the public should be beyond the 100 ppm ROE.

All responders must have training in the detection of H<sub>2</sub>S, measures for protection against the gas, equipment used for protection and emergency response. Additionally, responders must be equipped with H<sub>2</sub>S monitors and air packs in order to control the release. Use the “buddy system” to ensure no injuries during the response.

## Ignition of Gas Source

Should control of the well be considered lost and ignition considered, take care to protect against exposure to Sulfur Dioxide (SO<sub>2</sub>). Intentional ignition must be coordinated with the NMOCD and local officials. Additionally the NM State Police may become involved. NM State Police shall be the Incident Command on scene of any major release. Take care to protect downwind whenever there is an ignition of the gas

## Characteristics of H<sub>2</sub>S and SO<sub>2</sub>

Common Name	Chemical Formula	Specific Gravity	Threshold Limit	Hazardous Limit	Lethal Concentration
Hydrogen Sulfide	H <sub>2</sub> S	1.189 Air = 1	10 ppm	100 ppm/hr	600 ppm
Sulfur Dioxide	SO <sub>2</sub>	2.21 Air = 1	2 ppm	N/A	1000 ppm

## Contacting Authorities

YPC personnel must liaison with local and state agencies to ensure a proper response to a major release. Additionally, the OCD must be notified of the release as soon as possible but no later than 4 hours. Agencies will ask for information such as type and volume of release, wind direction, location of release, etc. Be prepared with all information available. The following call list of essential and potential responders has been prepared for use during a release. YPC Company response must be in coordination with the State of New Mexico’s ‘Hazardous Materials Emergency Response Plan’ (HMER)

### ***Yates Petroleum Corporation Phone Numbers***

---

YPC Office .....	(575) 748-1471
Darrick Stallings/Operations Manager .....	(575) 748-4198
Wade Bennett/Prod Superintendent .....	(575) 748-4236
LeeRoy Richards/Assistant Prod Superintendent .....	(575) 748-4228
Mike Larkin/Drilling .....	(575) 748-4222
Paul Hanes/Prod. Foreman/Roswell .....	(575) 624-2805
Tim Bussell/Drilling Superintendent .....	(575) 748-4221
Artesia Answering Service .....	(575) 748-4302
(During non-office hours)	

### **Agency Call List**

#### **Eddy County (575)**

##### **Artesia**

State Police .....	746-2703
City Police.....	746-2703
Sheriff's Office .....	746-9888
Ambulance .....	911
Fire Department .....	746-2701
LEPC (Local Emergency Planning Committee) .....	746-2122
NMOCD.....	748-1283

##### **Carlsbad**

State Police .....	885-3137
City Police.....	885-2111
Sheriff's Office .....	887-7551
Ambulance .....	911
Fire Department .....	885-2111
LEPC (Local Emergency Planning Committee).....	887-3798
US Bureau of Land Management.....	887-6544
New Mexico Emergency Response Commission (Santa Fe)	(505) 476-9600
24 HR .....	(505) 827-9126
New Mexico State Emergency Operations Center .....	(505) 476-9635
National Emergency Response Center (Washington, DC)	...(800) 424-8802

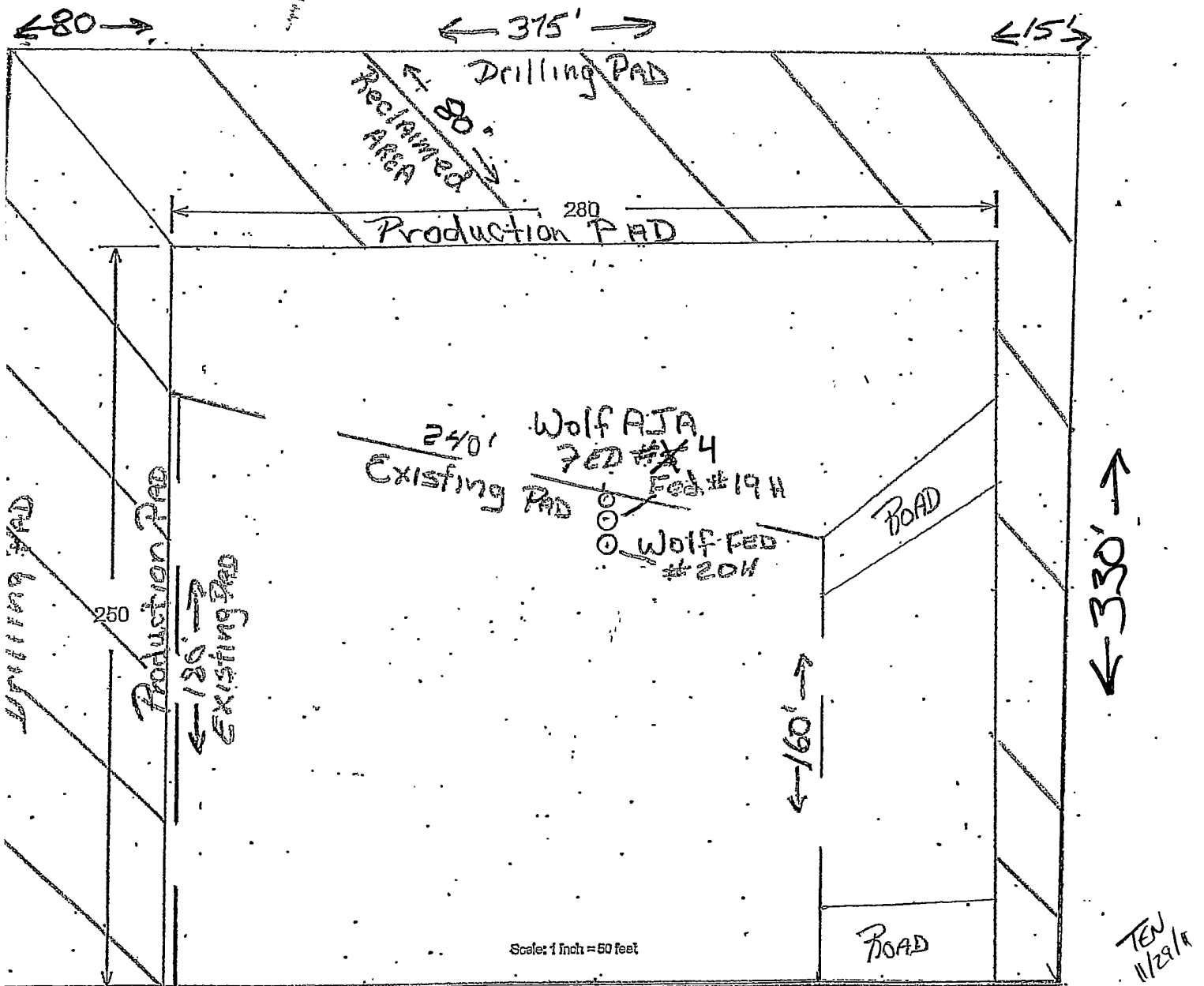
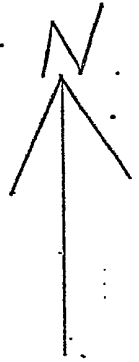
##### **Other**

Boots & Coots IWC .....	1-800-256-9688 or (281) 931-8884
Cudd Pressure Control.....	(915) 699-0139 or (915) 563-3356
Halliburton .....	(575) 746-2757
B. J. Services.....	(575) 746-3569

Flight For Life -4000 24th St, Lubbock, TX .....(806) 743-9911  
Aerocare -Rr 3 Box 49f, Lubbock, TX .....(806) 747-8923  
Med Flight Air Amb 2301 Yale Blvd SE #D3, Albuq, NM .....(505) 842-4433  
S B Air Med Svc 2505 Clark Carr Loop SE, Albuq, NM .....(505) 842-4949

# YATES PETROLEUM CORPORATION

YATES PETROLEUM CORPORATION  
WOLF AJA FEDERAL #19H  
RECLAMATION PLAN



YATES PETROLEUM CORPORATION  
Wolf AJA Federal #19H  
1920' FSL and 330' FEL, Surface Hole  
1980' FSL and 330' FWL, Bottom Hole  
Section 25, T21S-R31E  
Eddy County, New Mexico

Plans for Interim and Final Surface Reclamation.

1. Well location will be contoured to resemble the original topography as closely as possible. Surface reclamation measures will be taken to avoid new erosion on the well location and the area surrounding the well location. These measures will be overseen by Yates' personnel following a structured plan for the reclamation of each individual site.
2. Major drainage systems will be avoided as determined at the onsite with the BLM. Minor drainages may be rerouted around the well site within the 600' x 600' cleared area to avoid moving the well location.
3. Segregation of topsoil or like soils will be placed in low lift rows rather than in a stockpile just off the caliche well pad. Placement of these lift rows will be determined at the BLM onsite or at the time of construction by Yates Personnel.
4. Yates will use prudent oil field practices when constructing well locations and related facilities. Yates personnel will determine the size of the well location needed for safe working conditions for personnel during all aspects on the drilling and production process.
5. Back fill requirements for above ground reserve pits will be met by using cut, fill, and contouring of available top soil and like soils from the pit area. Should additional material be needed it will be brought in from a BLM approved source.
6. All topsoil will be spread over the area reclaimed during interim reclamation using a front end loader. For final reclamation enough topsoil will be evenly distributed between the interim reclaimed area and the final reclaimed area. This method of soil stabilization should help maintain the productivity and viability of the topsoil.
7. Soil treatments will be determined at the time of final reclamation by Yates' Environmental Specialist or other designated personnel to meet BLM final reclamation goals.
8. Reseeding of disturbed areas will be accordance with the seed mixtures attached to the approved APD as Conditions of Approval. Planting and soil preparation will be done during the rainy season between June 1st and September 1st.
9. Yates' personnel will control weeds during the productive period through final abandonment of the well. Yates may also use the option to hire a third party to be in charge of weed control or participate in the Chaves Soil and Water District program to pool monies for weed control.
10. Well pads, roads and related facilities with caliche or other surfacing material will be picked up or turned over at the time of final abandonment. These materials may be used on other projects in the area if possible or placed back in the caliche pit or other designated site. Buried pipelines will be left in place after being bled down and purged. Above surface support equipment will be removed or cut down below plow depth and removed. Pipeline right-of-ways will be reseeded according to BLM Best Management Practices.

MULTI-POINT SURFACE USE AND OPERATIONS PLAN  
YATES PETROLEUM CORPORATION  
Wolf "AJA" Federal #19H  
1920' FSL & 330' FEL, Surface Hole  
1980' FSL & 330' FWL, Bottom Hole  
Section 25-T21S-R31E  
Eddy County, New Mexico

This plan is submitted with Form 3160-3, Application for Permit to Drill, covering the above described well. The purpose of this plan is to describe the location of the proposed well, the proposed construction activities and operations plan, the magnitude of the surface disturbance involved and the procedures to be followed in rehabilitating the surface after completion of the operations, so that a complete appraisal can be made of the environmental effect associated with the operations.

1. EXISTING ROADS:

Exhibit A is a portion of the BLM map showing the well and roads in the vicinity of the proposed location. The proposed well site is located approximately 38 miles northeast of Loving, New Mexico and the access route to the location is indicated in red and green on Exhibit A.

DIRECTIONS: From downtown Carlsbad, New Mexico at the light at the intersection of 285 & 62/180 turn east. Stay on 62/180 for about 29.5 miles to Campbell Road (C-29). Turn south and go about 7.4 miles to a cattle guard on the right just before the top of the hill. Turn right to the Wolf #4 well pad.

2. PLANNED ACCESS ROAD:

- A. No new access required
- B. The road is existing.
- C. Existing roads will be maintained in the same or better condition.

3. LOCATION OF EXISTING WELL:

- A. There is drilling activity within a one-mile radius of the well site.
- B. Exhibit D shows existing wells within a one-mile radius of the proposed well site.

4. LOCATION OF EXISTING AND/OR PROPOSED FACILITIES:

- A. There are production facilities on this lease at the present time.
- B. In the event that the well is productive, the necessary production facilities will be installed on the drilling pad. If the well is productive oil, a gas or diesel self-contained unit will be used to provide the necessary power until an electric line can be built, if needed.

5. LOCATION AND TYPE OF WATER SUPPLY:

- A. It is planned to drill the proposed well with a fresh water system. The water will be obtained from commercial sources and will be hauled to the location by truck over the existing and proposed roads shown in Exhibit A.

# PECOS DISTRICT CONDITIONS OF APPROVAL

OPERATOR'S NAME:	Yates Petroleum Corporation
LEASE NO.:	NM-61358
WELL NAME & NO.:	Wolf AJA Federal #19H
SURFACE HOLE FOOTAGE:	1920' FSL & 0330' FEL
BOTTOM HOLE FOOTAGE:	1980' FSL & 0330' FWL
LOCATION:	Section 25, T. 21 S., R 31 E., NMPM
COUNTY:	Eddy County, New Mexico

## TABLE OF CONTENTS

Standard Conditions of Approval (COA) apply to this APD. If any deviations to these standards exist or special COAs are required, the section with the deviation or requirement will be checked below.

- ☐ **General Provisions**
- ☐ **Permit Expiration**
- ☐ **Archaeology, Paleontology, and Historical Sites**
- ☐ **Noxious Weeds**
- ☒ **Special Requirements**
  - Constructing over a Reserve Pit
  - Interim Reclamation
  - Painting Requirement
  - Lesser Prairie-Chicken Timing Stipulations
  - Ground-level Abandoned Well Marker
- ☒ **Construction**
  - Notification
  - Topsoil
  - Closed Loop System
  - Federal Mineral Material Pits
  - Well Pads
  - Roads
- ☐ **Road Section Diagram**
- ☒ **Drilling**
  - R-111-P Potash
  - H2S Requirements
  - Logging Requirements
  - Waste Material and Fluids
- ☒ **Production (Post Drilling)**
  - Well Structures & Facilities
  - Pipelines
- ☐ **Interim Reclamation**
- ☒ **Final Abandonment & Reclamation**

## **I. GENERAL PROVISIONS**

The approval of the Application For Permit To Drill (APD) is in compliance with all applicable laws and regulations: 43 Code of Federal Regulations 3160, the lease terms, Onshore Oil and Gas Orders, Notices To Lessees, New Mexico Oil Conservation Division (NMOCD) Rules, National Historical Preservation Act As Amended, and instructions and orders of the Authorized Officer. Any request for a variance shall be submitted to the Authorized Officer on Form 3160-5, Sundry Notices and Report on Wells.

## **II. PERMIT EXPIRATION**

If the permit terminates prior to drilling and drilling cannot be commenced within 60 days after expiration, an operator is required to submit Form 3160-5, Sundry Notices and Reports on Wells, requesting surface reclamation requirements for any surface disturbance. However, if the operator will be able to initiate drilling within 60 days after the expiration of the permit, the operator must have set the conductor pipe in order to allow for an extension of 60 days beyond the expiration date of the APD. (Filing of a Sundry Notice is required for this 60 day extension.)

## **III. ARCHAEOLOGICAL, PALEONTOLOGY & HISTORICAL SITES**

Any cultural and/or paleontological resource discovered by the operator or by any person working on the operator's behalf shall immediately report such findings to the Authorized Officer. The operator is fully accountable for the actions of their contractors and subcontractors. The operator shall suspend all operations in the immediate area of such discovery until written authorization to proceed is issued by the Authorized Officer. An evaluation of the discovery shall be made by the Authorized Officer to determine the appropriate actions that shall be required to prevent the loss of significant cultural or scientific values of the discovery. The operator shall be held responsible for the cost of the proper mitigation measures that the Authorized Officer assesses after consultation with the operator on the evaluation and decisions of the discovery. Any unauthorized collection or disturbance of cultural or paleontological resources may result in a shutdown order by the Authorized Officer.

## **IV. NOXIOUS WEEDS**

The operator shall be held responsible if noxious weeds become established within the areas of operations. Weed control shall be required on the disturbed land where noxious weeds exist, which includes the roads, pads, associated pipeline corridor, and adjacent land affected by the establishment of weeds due to this action. The operator shall consult with the Authorized Officer for acceptable weed control methods, which include following EPA and BLM requirements and policies.

## **V. SPECIAL REQUIREMENT(S)**

### **Constructing over a Reserve Pit**

Yates shall not excavate any portion of the existing reserve pit area. No topsoil shall be stripped from the reserve pit area. Reclamation over the reserve pit area during interim reclamation or final reclamation must be satisfactory to the authorized officer. Yates must comply with OCD rules when drilling over a reserve pit.

### **Interim Reclamation**

Yates shall perform the maximum amount of interim reclamation on this location. If it is discovered that the well pad can be downsized further than 280'x250', Yates is responsible for performing the task.

### **Painting Requirement:**

All new and old above-ground structures including meter housing that are not subject to safety requirements shall be painted a flat non-reflective paint color  
Shale Green, Munsell Soil Color Chart # 5Y 4/2

### **Timing Limitation Stipulation / Condition of Approval for lesser prairie-chicken:**

Oil and gas activities including 3-D geophysical exploration, and drilling will not be allowed in lesser prairie-chicken habitat during the period from March 1st through June 15th annually. During that period, other activities that produce noise or involve human activity, such as the maintenance of oil and gas facilities, pipeline, road, and well pad construction, will be allowed except between 3:00 am and 9:00 am. The 3:00 am to 9:00 am restriction will not apply to normal, around-the-clock operations, such as venting, flaring, or pumping, which do not require a human presence during this period. Additionally, no new drilling will be allowed within up to 200 meters of leks known at the time of permitting. Normal vehicle use on existing roads will not be restricted. Exhaust noise from pump jack engines must be muffled or otherwise controlled so as not to exceed 75 db measured at 30 feet from the source of the noise.

**Ground-level Abandoned Well Marker to avoid raptor perching:** Upon the plugging and subsequent abandonment of the well, the well marker will be installed at ground level on a plate containing the pertinent information for the plugged well. For more installation details, contact the Carlsbad Field Office at 575-234-5972.

## **VI. CONSTRUCTION**

### **A. NOTIFICATION**

The BLM shall administer compliance and monitor construction of the access road and well pad. Notify the Carlsbad Field Office at (575) 234-5972 at least 3 working days prior to commencing construction of the access road and/or well pad.

When construction operations are being conducted on this well, the operator shall have the approved APD and Conditions of Approval (COA) on the well site and they shall be made available upon request by the Authorized Officer.

### **B. TOPSOIL**

The operator shall stockpile the topsoil in a low profile manner in order to prevent wind/water erosion of the topsoil. The topsoil to be stripped is approximately 6 inches in depth. The topsoil will be used for interim and final reclamation.

### **C. CLOSED LOOP SYSTEM**

Tanks are required for drilling operations: No Pits.

The operator shall properly dispose of drilling contents at an authorized disposal site.

### **D. FEDERAL MINERAL MATERIALS PIT**

Payment shall be made to the BLM prior to removal of any federal mineral materials. Call the Carlsbad Field Office at (575) 234-5972.

### **E. WELL PAD SURFACING**

Surfacing of the well pad is not required.

If the operator elects to surface the well pad, the surfacing material may be required to be removed at the time of reclamation.

The well pad shall be constructed in a manner which creates the smallest possible surface disturbance, consistent with safety and operational needs.

### **F. ON LEASE ACCESS ROADS**

#### **Road Width**

The access road shall have a driving surface that creates the smallest possible surface disturbance and does not exceed fourteen (14) feet in width. The maximum width of surface disturbance, when constructing the access road, shall not exceed twenty (20) feet.

### **Surfacing**

Surfacing material is not required on the new access road driving surface. If the operator elects to surface the new access road or pad, the surfacing material may be required to be removed at the time of reclamation.

Where possible, no improvements should be made on the unsurfaced access road other than to remove vegetation as necessary, road irregularities, safety issues, or to fill low areas that may sustain standing water.

The Authorized Officer reserves the right to require surfacing of any portion of the access road at any time deemed necessary. Surfacing may be required in the event the road deteriorates, erodes, road traffic increases, or it is determined to be beneficial for future field development. The surfacing depth and type of material will be determined at the time of notification.

### **Crowning**

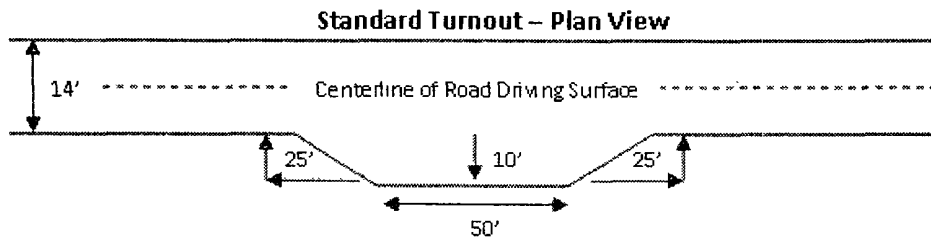
Crowning shall be done on the access road driving surface. The road crown shall have a grade of approximately 2% (i.e., a 1" crown on a 14' wide road). The road shall conform to Figure 1; cross section and plans for typical road construction.

### **Ditching**

Ditching shall be required on both sides of the road.

### **Turnouts**

Vehicle turnouts shall be constructed on the road. Turnouts shall be intervisible with interval spacing distance less than 1000 feet. Turnouts shall be constructed on all blind curves. Turnouts shall conform to the following diagram:

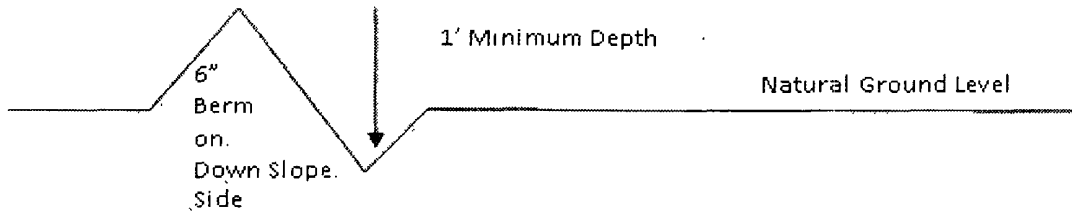


### **Drainage**

Drainage control systems shall be constructed on the entire length of road (e.g. ditches, sidehill outslowing and inslaping, lead-off ditches, culvert installation, and low water crossings).

A typical lead-off ditch has a minimum depth of 1 foot below and a berm of 6 inches above natural ground level. The berm shall be on the down-slope side of the lead-off ditch.

### Cross Section of a Typical Lead-off Ditch



All lead-off ditches shall be graded to drain water with a 1 percent minimum to 3 percent maximum ditch slope. The spacing interval are variable for lead-off ditches and shall be determined according to the formula for spacing intervals of lead-off ditches, but may be amended depending upon existing soil types and centerline road slope (in %);

### Formula for Spacing Interval of Lead-off Ditches

Example - On a 4% road slope that is 400 feet long, the water flow shall drain water into a lead-off ditch. Spacing interval shall be determined by the following formula:

$$400 \text{ foot road with } 4\% \text{ road slope: } \frac{400'}{4\%} + 100' = 200' \text{ lead-off ditch interval}$$

### Culvert Installations

Appropriately sized culvert(s) shall be installed at the deep waterway channel flow crossing.

### Cattleguards

An appropriately sized cattleguard(s) sufficient to carry out the project shall be installed and maintained at fence crossing(s).

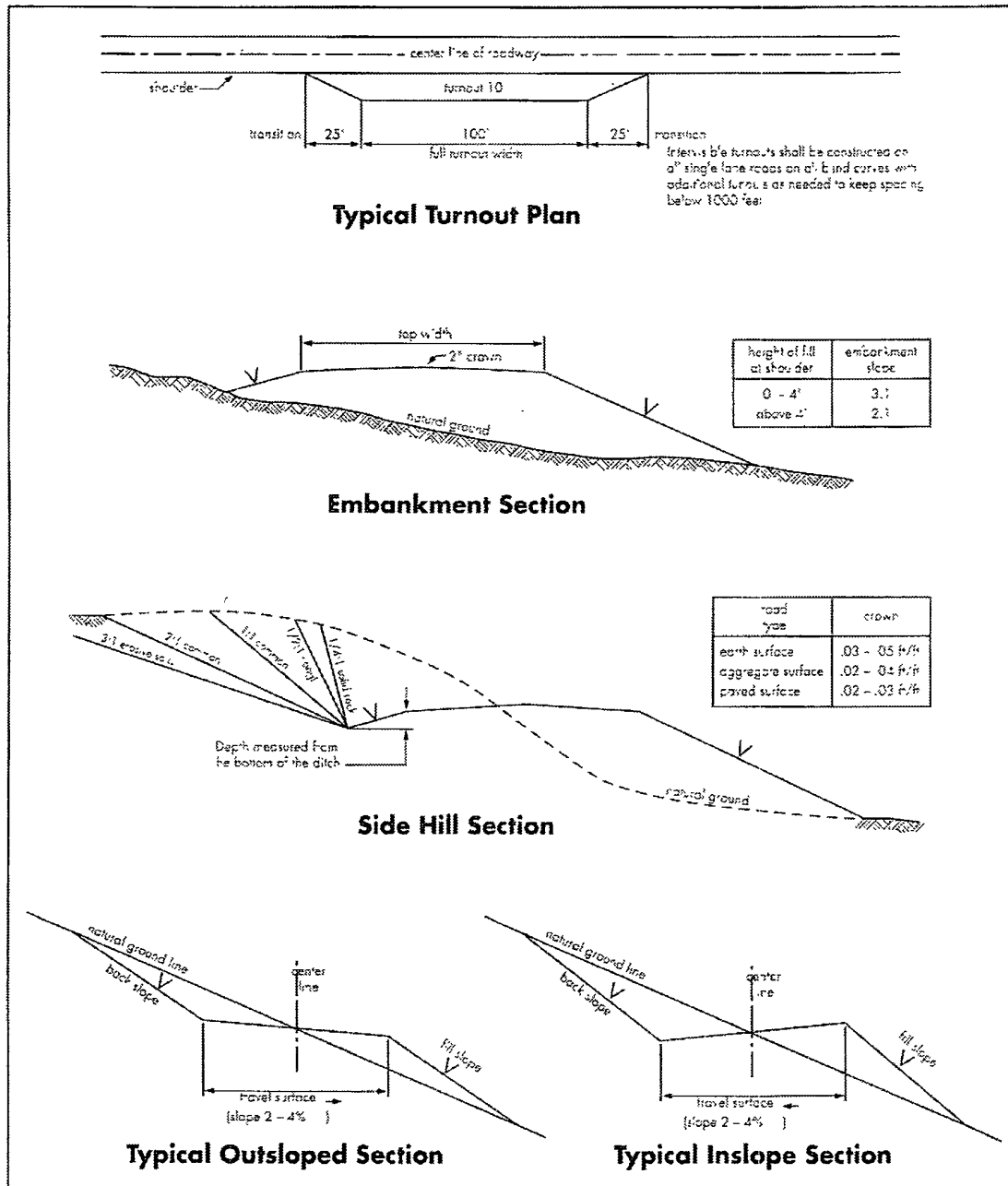
Any existing cattleguard(s) on the access road shall be repaired or replaced if they are damaged or have deteriorated beyond practical use. The operator shall be responsible for the condition of the existing cattleguard(s) that are in place and are utilized during lease operations.

A gate shall be constructed and fastened securely to H-braces.

### Public Access

Public access on this road shall not be restricted by the operator without specific written approval granted by the Authorized Officer.

**Figure 1 – Cross Sections and Plans For Typical Road Sections**



## VII. DRILLING

### A. DRILLING OPERATIONS REQUIREMENTS

The BLM is to be notified a minimum of 4 hours in advance for a representative to witness:

- a. Spudding well
- b. Setting and/or Cementing of all casing strings
- c. BOPE tests

☒ **Eddy County**

Call the Carlsbad Field Office, 620 East Greene St., Carlsbad, NM 88220,  
(575) 361-2822

1. **Pilot hole maximum depth is 8,600', this is less than requested.**
2. **Due to recent H<sub>2</sub>S encounters in the salt formation, it is recommended that monitoring equipment be onsite for potential Hydrogen Sulfide prior to drilling out the surface shoe. If Hydrogen Sulfide is encountered, please report measurements and formations to the BLM.**
3. Unless the production casing has been run and cemented or the well has been properly plugged, the drilling rig shall not be removed from over the hole without prior approval. **If the drilling rig is removed without approval – an Incident of Non-Compliance will be written and will be a “Major” violation.**
4. Floor controls are required for 3M or Greater systems. These controls will be on the rig floor, unobstructed, readily accessible to the driller and will be operational at all times during drilling and/or completion activities. Rig floor is defined as the area immediately around the rotary table; the area immediately above the substructure on which the draw works is located, this does not include the dog house or stairway area.
5. **The record of the drilling rate along with the GR/N well log run from TD to surface (horizontal well – vertical portion of hole) will be submitted to the BLM office as well as all other logs run on the borehole 30 days from completion. If available, a digital copy of the logs is to be submitted in addition to the paper copies. The Rustler top and top and bottom of Salt are to be recorded on the Completion Report.**

### B. CASING

**Changes to the approved APD casing and cement program require submitting a sundry and receiving approval prior to work. Failure to obtain approval prior to work will result in an Incident of Non-Compliance being issued.**

**Centralizers required on surface casing per Onshore Order 2.III.B.1.f.**

**Wait on cement (WOC) time prior to drilling out for a primary cement job will be a minimum 18 hours for a water basin, 24 hours in the potash area, or 500 pounds compressive strength, whichever is greater for all casing strings. DURING THIS WOC TIME, NO DRILL PIPE, ETC. SHALL BE RUN IN THE HOLE. Provide compressive strengths including hours to reach required 500 pounds compressive strength prior to cementing each casing string. See individual casing strings for details regarding lead cement slurry requirements.**

**No pea gravel permitted for remedial or fall back remedial without prior authorization from the BLM engineer.**

**R-111-P Potash**

**Possible lost circulation within the Glorietta formation.**

**Possible water flows in the Blinebry formation.**

1. The 13-3/8 inch surface casing shall be set at **approximately 900 feet (a minimum of 25 feet into the Rustler Anhydrite and above the salt)** and cemented to the surface.
  - a. If cement does not circulate to the surface, the appropriate BLM office shall be notified and a temperature survey utilizing an electronic type temperature survey with surface log readout will be used or a cement bond log shall be run to verify the top of the cement. Temperature survey will be run a minimum of six hours after pumping cement and ideally between 8-10 hours after completing the cement job.
  - b. **Wait on cement (WOC) time for a primary cement job is to include the lead cement slurry.**
  - c. Wait on cement (WOC) time for a remedial job will be a minimum of 4 hours after bringing cement to surface or 500 pounds compressive strength, whichever is greater.
  - d. If cement falls back, remedial cementing will be done prior to drilling out that string.
2. The minimum required fill of cement behind the 9-5/8 inch intermediate casing is:
  - ☒ Cement to surface. If cement does not circulate see B.1.a, c-d above. **Wait on cement (WOC) time for a primary cement job is to include the lead cement slurry due to potash.**

**Pilot hole shall have a plug set at the bottom of the hole. Plug shall be 186' in length and shall be tagged – contact 575-361-2822 a minimum of 4 hours prior to tag. Operator can place one plug to the KOP and no tag is required.**

**Centralizers required on horizontal leg, must be type for horizontal service and minimum of one every other joint.**

3. The minimum required fill of cement behind the 5-1/2 inch production casing is:

a. First stage to DV tool, cement shall:

☒ Cement to circulate. If cement does not circulate, contact the appropriate BLM office before proceeding with second stage cement job. Operator should have plans as to how they will achieve circulation on the next stage.

b. Second stage above DV tool, cement shall:

☒ Cement to surface. **Required due to R-111-P Potash.** If cement does not circulate, contact the appropriate BLM office. **May require additional cement as the excess calculates negative 39%.**

4. If hardband drill pipe is rotated inside casing, returns will be monitored for metal. If metal is found in samples, drill pipe will be pulled and rubber protectors which have a larger diameter than the tool joints of the drill pipe will be installed prior to continuing drilling operations.
5. Whenever a casing string is cemented in the R-111-P potash area, the NMOCD requirements shall be followed.

#### **C. PRESSURE CONTROL**

1. All blowout preventer (BOP) and related equipment (BOPE) shall comply with well control requirements as described in Onshore Oil and Gas Order No. 2 and API RP 53 Sec. 17. **Piping from choke manifold to flare to be as straight as possible.**
2. Minimum working pressure of the blowout preventer (BOP) and related equipment (BOPE) required for drilling below the surface casing shoe shall be **3000 (3M)** psi.
- a. **For surface casing only:** If the BOP/BOPE is to be tested against casing, the wait on cement (WOC) time for that casing is to be met (see WOC statement at start of casing section). Independent service company required.

3. The appropriate BLM office shall be notified a minimum of 4 hours in advance for a representative to witness the tests.
- a. In potash areas, for all casing strings utilizing slips, these are to be set as soon as the crew and rig are ready and any fallback cement remediation has been done. For all casing strings, casing cut-off and BOP installation can be initiated at twelve hours after bumping the plug. However, **no tests** shall commence until the cement has had a minimum of 24 hours setup time.
  - b. The tests shall be done by an independent service company utilizing a test plug **not a cup or J-packer**.
  - c. The results of the test shall be reported to the appropriate BLM office.
  - d. All tests are required to be recorded on a calibrated test chart. **A copy of the BOP/BOPE test chart and a copy of independent service company test will be submitted to the appropriate BLM office.**
  - e. The BOP/BOPE test shall include a low pressure test from 250 to 300 psi. The test will be held for a minimum of 10 minutes if test is done with a test plug and 30 minutes without a test plug.

#### **D. DRILL STEM TEST**

If drill stem tests are performed, Onshore Order 2.III.D shall be followed.

#### **E. WASTE MATERIAL AND FLUIDS**

All waste (i.e. drilling fluids, trash, salts, chemicals, sewage, gray water, etc.) created as a result of drilling operations and completion operations shall be safely contained and disposed of properly at a waste disposal facility. No waste material or fluid shall be disposed of on the well location or surrounding area.

Porto-johns and trash containers will be on-location during fracturing operations or any other crew-intensive operations.

**WWI 090511**

## **VIII. PRODUCTION (POST DRILLING)**

### **A. WELL STRUCTURES & FACILITIES**

#### **Placement of Production Facilities**

Production facilities should be placed on the well pad to allow for maximum interim recontouring and revegetation of the well location.

#### **Containment Structures**

The containment structure shall be constructed to hold the capacity of the entire contents of the largest tank, plus 24 hour production, unless more stringent protective requirements are deemed necessary by the Authorized Officer.

#### **Painting Requirement**

All above-ground structures including meter housing that are not subject to safety requirements shall be painted a flat non-reflective paint color  
Shale Green, Munsell Soil Color Chart # 5Y 4/2

### **B. PIPELINES**

#### **STANDARD STIPULATIONS FOR SURFACE INSTALLED PIPELINES**

**A copy of the APD and attachments, including stipulations, survey plat and/or map, will be on location during construction. BLM personnel may request to you a copy of your permit during construction to ensure compliance with all stipulations.**

Holder agrees to comply with the following stipulations to the satisfaction of the Authorized Officer:

1. The holder shall indemnify the United States against any liability for damage to life or property arising from the occupancy or use of public lands under this grant.
2. The holder shall comply with all applicable Federal laws and regulations existing or hereafter enacted or promulgated. In any event, the holder shall comply with the Toxic Substances Control Act of 1976 as amended, 15 USC 2601 et seq. (1982) with regards to any toxic substances that are used, generated by or stored on the right-of-way or on facilities authorized under this right-of-way grant. (See 40 CFR, Part 702-799 and especially, provisions on polychlorinated biphenyls, 40 CFR 761.1-761.193.) Additionally, any release of toxic substances (leaks, spills, etc.) in excess of the reportable quantity established by 40 CFR, Part 117 shall be reported as required by the Comprehensive Environmental Response, Compensation, and Liability Act, section 102b. A copy of any report required or requested by any Federal agency or State government as a result of a reportable release or spill of any toxic substances shall be furnished to the authorized officer concurrent with the filing of the reports to the involved Federal agency or State government.
3. The holder agrees to indemnify the United States against any liability arising from the

release of any hazardous substance or hazardous waste (as these terms are defined in the Comprehensive Environmental Response, Compensation and Liability Act of 1980, 42 U.S.C. 9601, et seq. or the Resource Conservation and Recovery Act, 42 U.S.C. 6901, et seq.) on the Right-of-Way (unless the release or threatened release is wholly unrelated to activity of the Right-of-Way holder's activity on the Right-of-Way), or resulting from the activity of the Right-of-Way holder on the Right-of-Way. This agreement applies without regard to whether a release is caused by the holder, its agent, or unrelated third parties.

4. The holder shall be liable for damage or injury to the United States to the extent provided by 43 CFR Sec. 2883.1-4. The holder shall be held to a standard of strict liability for damage or injury to the United States resulting from pipe rupture, fire, or spills caused or substantially aggravated by any of the following within the right-of-way or permit area:

- a. Activities of the holder including, but not limited to construction, operation, maintenance, and termination of the facility.
- b. Activities of other parties including, but not limited to:
  - (1) Land clearing.
  - (2) Earth-disturbing and earth-moving work.
  - (3) Blasting.
  - (4) Vandalism and sabotage.
- c. Acts of God.

The maximum limitation for such strict liability damages shall not exceed one million dollars (\$1,000,000) for any one event, and any liability in excess of such amount shall be determined by the ordinary rules of negligence of the jurisdiction in which the damage or injury occurred.

This section shall not impose strict liability for damage or injury resulting primarily from an act of war or from the negligent acts or omissions of the United States.

5. If, during any phase of the construction, operation, maintenance, or termination of the pipeline, any oil, salt water, or other pollutant should be discharged from the pipeline system, impacting Federal lands, the control and total removal, disposal, and cleaning up of such oil, salt water, or other pollutant, wherever found, shall be the responsibility of the holder, regardless of fault. Upon failure of the holder to control, dispose of, or clean up such discharge on or affecting Federal lands, or to repair all damages resulting therefrom, on the Federal lands, the Authorized Officer may take such measures as he deems necessary to control and clean up the discharge and restore the area, including, where appropriate, the aquatic environment and fish and wildlife habitats, at the full expense of the holder. Such action by the Authorized Officer shall not relieve the holder of any responsibility as provided herein.

6. The authorized right-of-way width will be 20 feet. 14 feet of the right-of-way width will consist of existing disturbance (existing lease roads) and the remaining 6 feet will consist of area adjacent to the disturbance. All construction and maintenance activity will be confined to existing roads.
7. No blading or clearing of any vegetation will be allowed unless approved in writing by the Authorized Officer.
8. The holder shall install the pipeline on the surface in such a manner that will minimize suspension of the pipeline across low areas in the terrain. In hummocky or dune areas, the pipeline will be "snaked" around hummocks and dunes rather than suspended across these features.
9. The pipeline shall be buried with a minimum of 24 inches under all roads, "two-tracks," and trails. Burial of the pipe will continue for 20 feet on each side of each crossing. The condition of the road, upon completion of construction, shall be returned to at least its former state with no bumps or dips remaining in the road surface.
10. The holder shall minimize disturbance to existing fences and other improvements on public lands. The holder is required to promptly repair improvements to at least their former state. Functional use of these improvements will be maintained at all times. The holder will contact the owner of any improvements prior to disturbing them. When necessary to pass through a fence line, the fence shall be braced on both sides of the passageway prior to cutting of the fence. No permanent gates will be allowed unless approved by the Authorized Officer.
11. In those areas where erosion control structures are required to stabilize soil conditions, the holder will install such structures as are suitable for the specific soil conditions being encountered and which are in accordance with sound resource management practices.
12. Excluding the pipe, all above-ground structures not subject to safety requirement shall be painted by the holder to blend with the natural color of the landscape. The paint used shall be a color which simulates "Standard Environmental Colors" – **Shale Green**, Munsell Soil Color No. 5Y 4/2; designated by the Rocky Mountain Five State Interagency Committee.
13. The pipeline will be identified by signs at the point of origin and completion of the right-of-way and at all road crossings. At a minimum, signs will state the holder's name, BLM serial number, and the product being transported. Signs will be maintained in a legible condition for the life of the pipeline.
14. The holder shall not use the pipeline route as a road for purposes other than routine maintenance as determined necessary by the Authorized Officer in consultation with the holder. The holder will take whatever steps are necessary to ensure that the pipeline

route is not used as a roadway.

15. Any cultural and/or paleontological resource (historic or prehistoric site or object) discovered by the holder, or any person working on his behalf, on public or Federal land shall be immediately reported to the authorized officer. Holder shall suspend all operations in the immediate area of such discovery until written authorization to proceed is issued by the authorized officer. An evaluation of the discovery will be made by the authorized officer to determine appropriate cultural or scientific values. The holder will be responsible for the cost of evaluation and any decision as to proper mitigation measures will be made by the authorized officer after consulting with the holder.

16. The operator shall be held responsible if noxious weeds become established within the areas of operations. Weed control shall be required on the disturbed land where noxious weeds exist, which includes the roads, powerline corridor, and adjacent land affected by the establishment of weeds due to this action. The operator shall consult with the Authorized Officer for acceptable weed control methods, which include following EPA and BLM requirements and policies.

## **IX. INTERIM RECLAMATION**

During the life of the development, all disturbed areas not needed for active support of production operations should undergo interim reclamation in order to minimize the environmental impacts of development on other resources and uses.

Within six (6) months of well completion, operators should work with BLM surface management specialists (Jim Amos: 575-234-5909) to devise the best strategies to reduce the size of the location. Interim reclamation should allow for remedial well operations, as well as safe and efficient removal of oil and gas.

During reclamation, the removal of caliche is important to increasing the success of revegetating the site. Removed caliche that is free of contaminants may be used for road repairs, fire walls or for building other roads and locations. In order to operate the well or complete workover operations, it may be necessary to drive, park and operate on restored interim vegetation within the previously disturbed area. Disturbing revegetated areas for production or workover operations will be allowed. If there is significant disturbance and loss of vegetation, the area will need to be revegetated. Communicate with the appropriate BLM office for any exceptions/exemptions if needed.

All disturbed areas after they have been satisfactorily prepared need to be reseeded with the seed mixture provided below.

Upon completion of interim reclamation, the operator shall submit a Sundry Notices and Reports on Wells, Subsequent Report of Reclamation (Form 3160-5).

## **X. FINAL ABANDONMENT & RECLAMATION**

At final abandonment, well locations, production facilities, and access roads must undergo "final" reclamation so that the character and productivity of the land are restored.

Earthwork for final reclamation must be completed within six (6) months of well plugging. All pads, pits, facility locations and roads must be reclaimed to a satisfactory revegetated, safe, and stable condition, unless an agreement is made with the landowner or BLM to keep the road and/or pad intact.

After all disturbed areas have been satisfactorily prepared, these areas need to be revegetated with the seed mixture provided below. Seeding should be accomplished by drilling on the contour whenever practical or by other approved methods. Seeding may need to be repeated until revegetation is successful, as determined by the BLM.

Operators shall contact a BLM surface protection specialist prior to surface abandonment operations for site specific objectives (Jim Amos: 575-234-5909).

Ground-level Abandoned Well Marker to avoid raptor perching: Upon the plugging and subsequent abandonment of the well, the well marker will be installed at ground level on a plate containing the pertinent information for the plugged well.

## Seed Mixture 2, for Sandy Sites

The holder shall seed all disturbed areas with the seed mixture listed below. The seed mixture shall be planted in the amounts specified in pounds of pure live seed (PLS)\* per acre. There shall be no primary or secondary noxious weeds in the seed mixture. Seed will be tested and the viability testing of seed will be done in accordance with State law (s) and within nine (9) months prior to purchase. Commercial seed will be either certified or registered seed. The seed container will be tagged in accordance with State law(s) and available for inspection by the authorized officer.

Seed will be planted using a drill equipped with a depth regulator to ensure proper depth of planting where drilling is possible. The seed mixture will be evenly and uniformly planted over the disturbed area (smaller/heavier seeds have a tendency to drop the bottom of the drill and are planted first). The holder shall take appropriate measures to ensure this does not occur. Where drilling is not possible, seed will be broadcast and the area shall be raked or chained to cover the seed. When broadcasting the seed, the pounds per acre are to be doubled. The seeding will be repeated until a satisfactory stand is established as determined by the authorized officer. Evaluation of growth will not be made before completion of at least one full growing season after seeding.

Species to be planted in pounds of pure live seed\* per acre:

<u>Species</u>	<u>lb/acre</u>
Sand dropseed ( <i>Sporobolus cryptandrus</i> )	1.0
Sand love grass ( <i>Eragrostis trichodes</i> )	1.0
Plains bristlegrass ( <i>Setaria macrostachya</i> )	2.0

\*Pounds of pure live seed:

Pounds of seed x percent purity x percent germination = pounds pure live seed