

UNITED STATES
DEPARTMENT OF THE INTERIOR
BUREAU OF LAND MANAGEMENT

APPLICATION FOR PERMIT TO DRILL OR REENTER

1a. Type of work <input checked="" type="checkbox"/> DRILL <input type="checkbox"/> REENTER		5. Lease Serial No. NMLC-028731B
1b. Type of Well <input checked="" type="checkbox"/> Oil Well <input type="checkbox"/> Gas Well <input type="checkbox"/> Other <input type="checkbox"/> Single Zone <input type="checkbox"/> Multiple Zone		6. If Indian, Allottee or Tribe Name N/A
2. Name of Operator COG Operating LLC		7. If Unit or CA Agreement, Name and No NMNM-111789X; Dodd Federal Unit
3a. Address 550 W. Texas Ave., Suite 1300 Midland, TX 79701		8. Lease Name and Well No. DODD FEDERAL UNIT #585 [308195]
3b. Phone No. (include area code) 432-685-4384		9. API Well No. 30-015- 35772
4. Location of Well (Report location clearly and in accordance with any State requirements *) At surface 980' FSL & 1848' FWL, Unit N At proposed prod zone		10. Field and Pool, or Exploratory Grayburg Jackson; SR-Q-Grbg-SA [28509]
14. Distance in miles and direction from nearest town or post office* 2 miles from Loco Hills, NM		11. Sec, T R M or Blk and Survey or Area Sec 11 T17S R29E
15. Distance from proposed* location to nearest property or lease line, ft (Also to nearest drig. unit line, if any) 980'	16. No. of acres in lease 1480	17. Spacing Unit dedicated to this well 40
18. Distance from proposed location* to nearest well, drilling, completed, applied for, on this lease, ft 335'	19. Proposed Depth 4550'	20. BLM/BIA Bond No on file NMB000740; NMB000215
21. Elevations (Show whether DF, KDB, RT, GL, etc) 3626' GL	22. Approximate date work will start* 11/30/2011	23. Estimated duration 15 days

24. Attachments

The following, completed in accordance with the requirements of Onshore Oil and Gas Order No 1, shall be attached to this form

- | | |
|------------------------------------------------------------------------------------------------------------------------------------------------|----------------------------------------------------------------------------------------------------|
| 1. Well plat certified by a registered surveyor | 4. Bond to cover the operations unless covered by an existing bond on file (see Item 20 above) |
| 2. A Drilling Plan | 5. Operator certification |
| 3. A Surface Use Plan (if the location is on National Forest System Lands, the SUPO shall be filed with the appropriate Forest Service Office) | 6. Such other site specific information and/or plans as may be required by the authorized officer. |

25. Signature	Name (Printed/Typed) Kelly J. Holly	Date 09/08/2011
Title Permitting Tech		

Approved by (Signature) <i>/s/ Don Peterson</i>	Name (Printed/Typed)	Date DEC 8 2011
Title FIELD MANAGER	Office CARLSBAD FIELD OFFICE	

Application approval does not warrant or certify that the applicant holds legal or equitable title to those rights in the subject lease which would entitle the applicant to conduct operations thereon.

Conditions of approval, if any, are attached

APPROVAL FOR TWO YEARS

Title 18 U.S.C. Section 1001 and Title 43 U.S.C. Section 1212, make it a crime for any person knowingly and willfully to make to any department or agency of the United States any false, fictitious or fraudulent statements or representations as to any matter within its jurisdiction

*(Instructions on page 2)

Roswell Controlled Water Basin

Approval Subject to General Requirements
& Special Stipulations Attached

SEE ATTACHED FOR
CONDITIONS OF APPROVAL

dm

DISTRICT I
1625 N. FRENCH DR., HOBBS, NM 88240
DISTRICT II
1301 W. GRAND AVENUE, ARTESIA, NM 88210
DISTRICT III
1000 RIO BRAZOS RD., AZTEC, NM 87410
DISTRICT IV
11885 S. ST. FRANCIS DR., SANTA FE, NM 87505

State of New Mexico
Energy, Minerals & Natural Resources Department
OIL CONSERVATION DIVISION
1220 South St. Francis Dr.
Santa Fe, New Mexico 87505

Form C-102
Revised July 16, 2010
Submit to Appropriate
District Office

☐ AMENDED REPORT

WELL LOCATION AND ACREAGE DEDICATION PLAT

API Number 30-015 - 39772	Pool Code 28509	Pool Name Grayburg Jackson; SR-Q-G-SA
Property Code 308195	Property Name DODD FEDERAL UNIT	Well Number 585
OGRID No. 229137	Operator Name COG OPERATING, LLC	Elevation 3626'

Surface Location

UL or lot No. N	Section 11	Township 17-S	Range 29-E	Lot Idn	Feet from the 980	North/South line SOUTH	Feet from the 1848	East/West line WEST	County EDDY
---------------------------	----------------------	-------------------------	----------------------	---------	-----------------------------	----------------------------------	------------------------------	-------------------------------	-----------------------

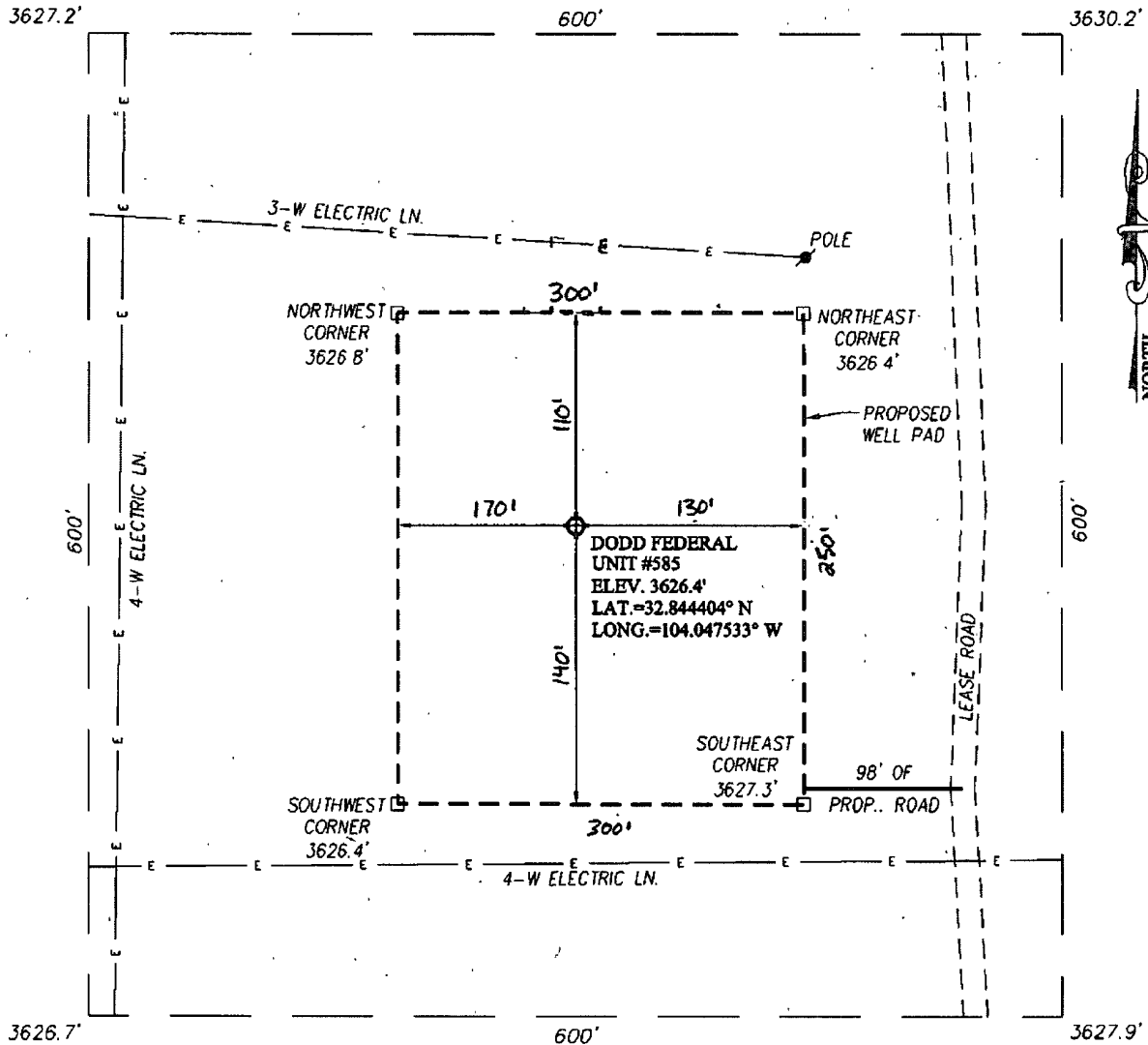
Bottom Hole Location If Different From Surface

UL or lot No.	Section	Township	Range	Lot Idn	Feet from the	North/South line	Feet from the	East/West line	County
Dedicated Acres 40	Joint or Infill	Consolidation Code	Order No						

NO ALLOWABLE WILL BE ASSIGNED TO THIS COMPLETION UNTIL ALL INTERESTS HAVE BEEN CONSOLIDATED OR A NON-STANDARD UNIT HAS BEEN APPROVED BY THE DIVISION

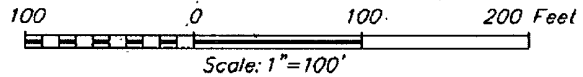
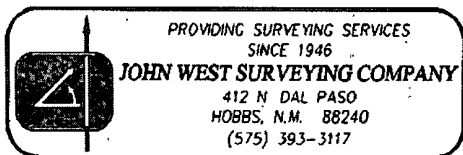
<p>DETAIL</p> <p>3627.2' 3630.2' 600' 3626.7' 3627.9'</p> <p>GEODETIC COORDINATES NAD 27 NME</p> <p>SURFACE LOCATION Y=671024.0 N X=587775.3 E</p> <p>LAT.=32.844404° N LONG.=104.047533° W</p> <p>1848' 980'</p>	<p>OPERATOR CERTIFICATION</p> <p>I hereby certify that the information herein is true and complete to the best of my knowledge and belief, and that this organization either owns a working interest or unleased mineral interest in the land including the proposed bottom hole location or has a right to drill this well at this location pursuant to a contract with an owner of such mineral or working interest, or to a voluntary pooling agreement or a compulsory pooling order heretofore entered by the division</p> <p> 9-8-11 Signature Date</p> <p>Kelly J. Holly Printed Name</p> <p>kholly@concho.com E-mail Address</p>
	<p>SURVEYOR CERTIFICATION</p> <p>I hereby certify that the well location shown on this plat was plotted from field notes of actual surveys made by me or under my supervision, and that the same is true and correct to the best of my belief.</p> <p>AUGUST 17, 2011</p>
	<p>Date of Survey</p> <p>Signature & Seal of Professional Surveyor:</p> <p></p> <p>Certificate Number Gary C. Eidson 12641 Ronald J. Eidson 3239</p> <p>DSS TWSC W.O 11.11.1328</p>

SECTION 11, TOWNSHIP 17 SOUTH, RANGE 29 EAST, N.M.P.M.
 EDDY COUNTY NEW MEXICO



DIRECTIONS TO LOCATION

FROM THE INTERSECTION OF U.S. HWY. #82 AND CO. RD. #214 (BARNAVAL DRAW), GO NORTHWEST ON CO. RD. #214 APPROX. 1.5 MILES TURN RIGHT AND GO EAST APPROX. 0.8 MILES. TURN LEFT AND GO NORTH APPROX. 0.1 MILE. TURN RIGHT AND GO EAST APPROX. 0.5 MILES. TURN LEFT AND GO NORTH APPROX. 0.1 MILE TO THIS LOCATION.

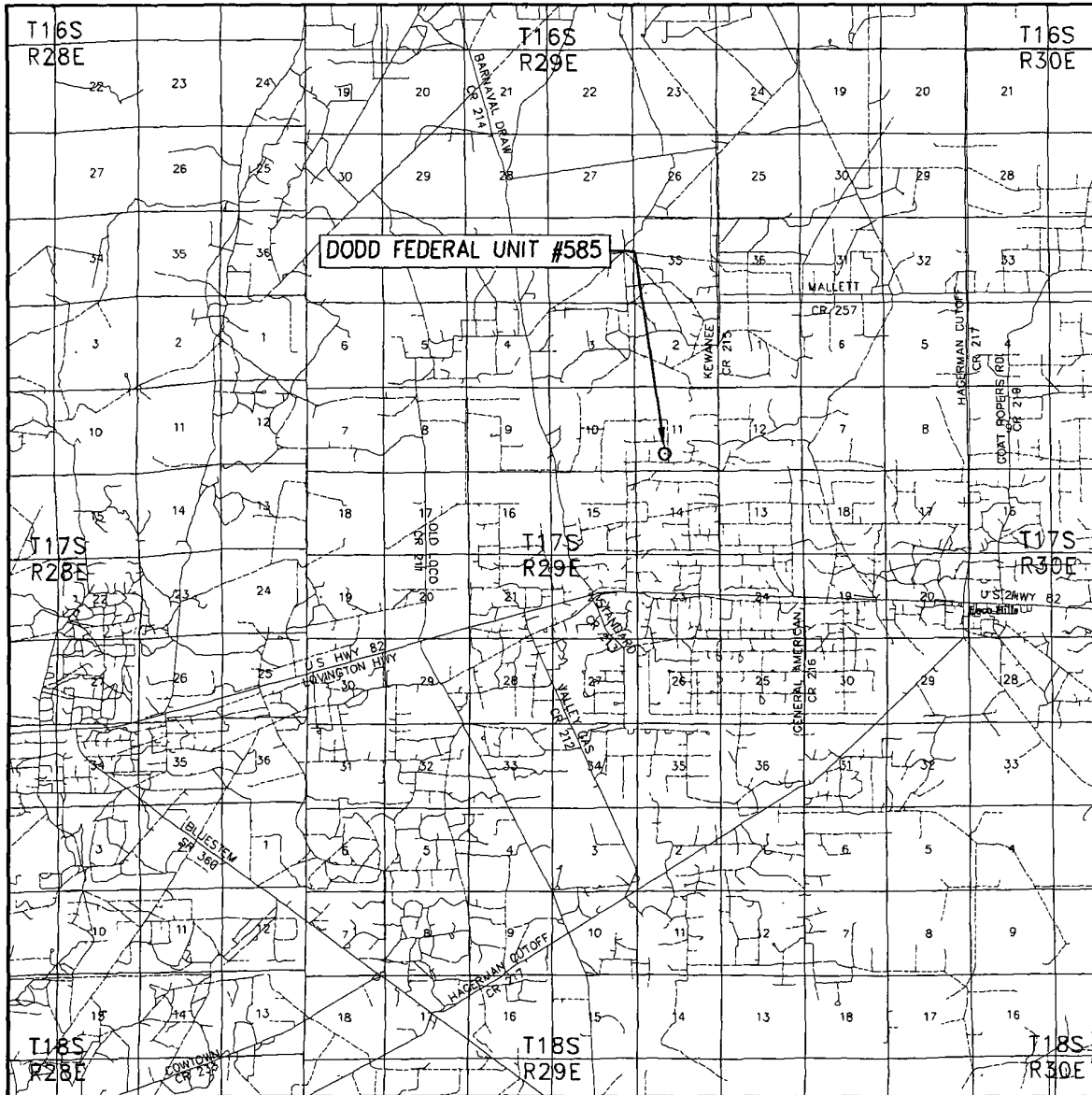


COG OPERATING, LLC

DODD FEDERAL UNIT #585 WELL
 LOCATED 980 FEET FROM THE SOUTH LINE
 AND 1848 FEET FROM THE WEST LINE OF SECTION 11,
 TOWNSHIP 17 SOUTH, RANGE 29 EAST, N.M.P.M.,
 EDDY COUNTY, NEW MEXICO

Survey Date: 8/17/11	Sheet 1 of 1 Sheets
W.O. Number: 11.11.1328	Dr By: DSS
Date: 8/31/11	Rel. W.O.: 11111328
	Scale: 1"=100'

VICINITY MAP



SCALE: 1" = 2 MILES

SEC. 11 TWP. 17-S RGE. 29-E

SURVEY N.M.P.M.

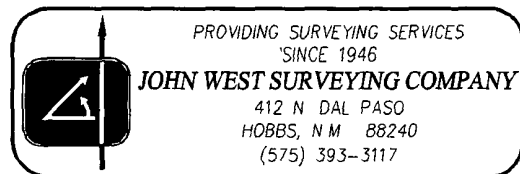
COUNTY EDDY STATE NEW MEXICO

DESCRIPTION 980' FSL & 1848' FWL

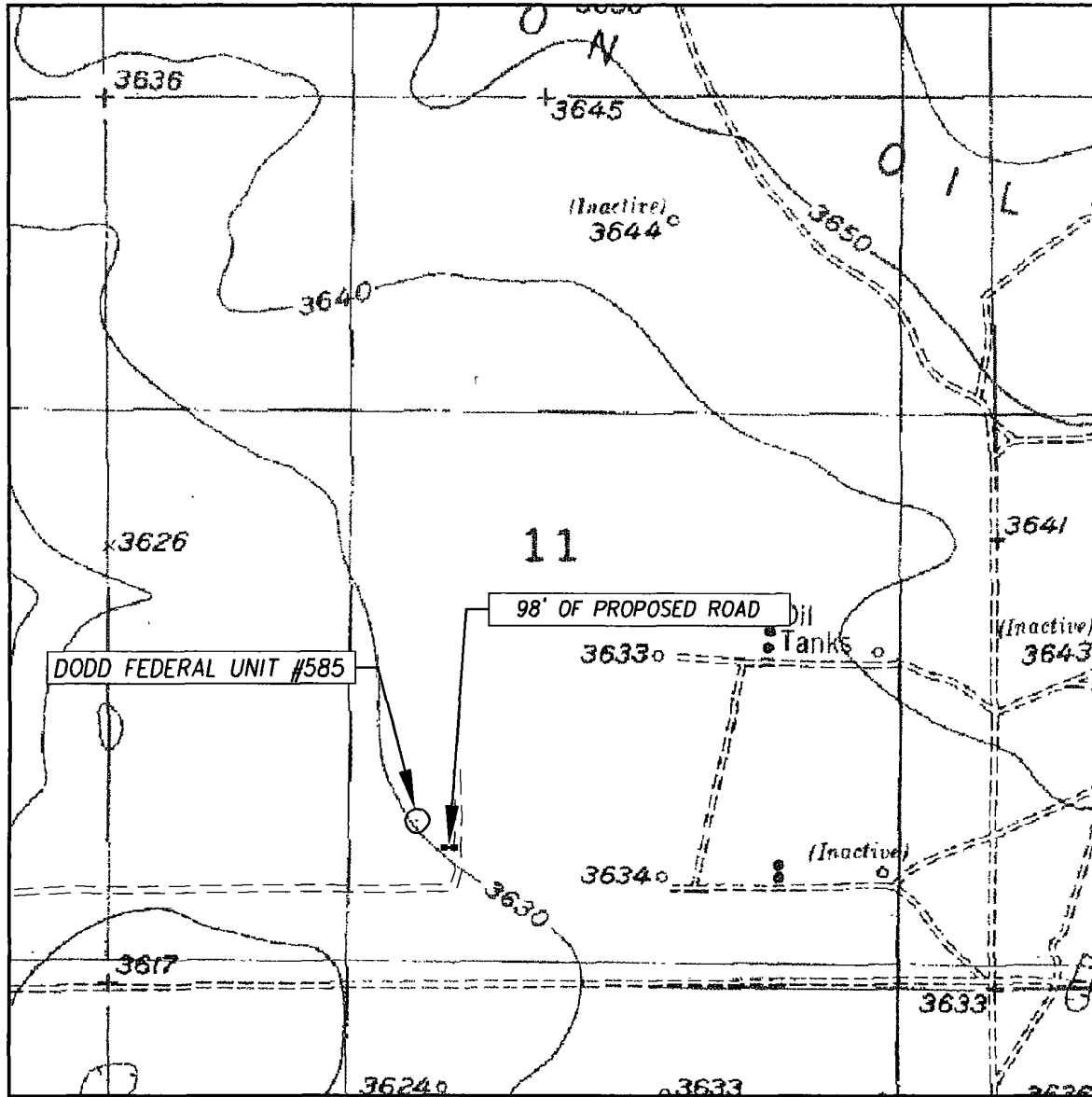
ELEVATION 3626'

OPERATOR COG OPERATING, LLC

LEASE DODD FEDERAL UNIT



LOCATION VERIFICATION MAP



SCALE: 1" = 1000'

CONTOUR INTERVAL:
RED LAKE SE, N.M. - 10'

SEC. 11 TWP. 17-S RGE 29-E

SURVEY N.M.P.M.

COUNTY EDDY STATE NEW MEXICO

DESCRIPTION 980' FSL & 1848' FWL

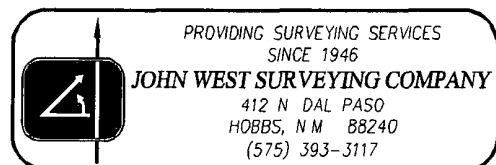
ELEVATION 3626'

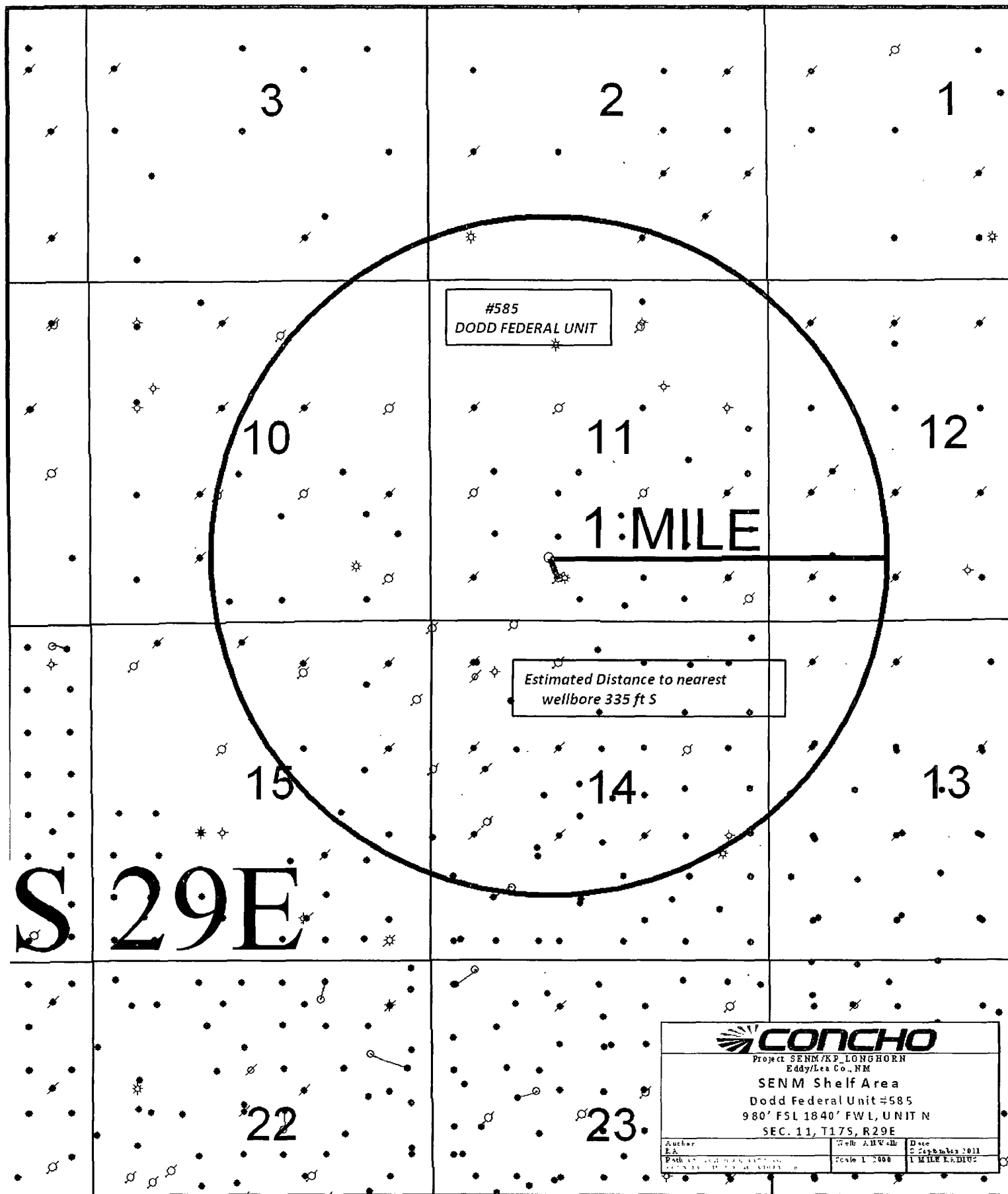
OPERATOR COG OPERATING, INC.

LEASE DODD FEDERAL UNIT

U.S.G.S. TOPOGRAPHIC MAP

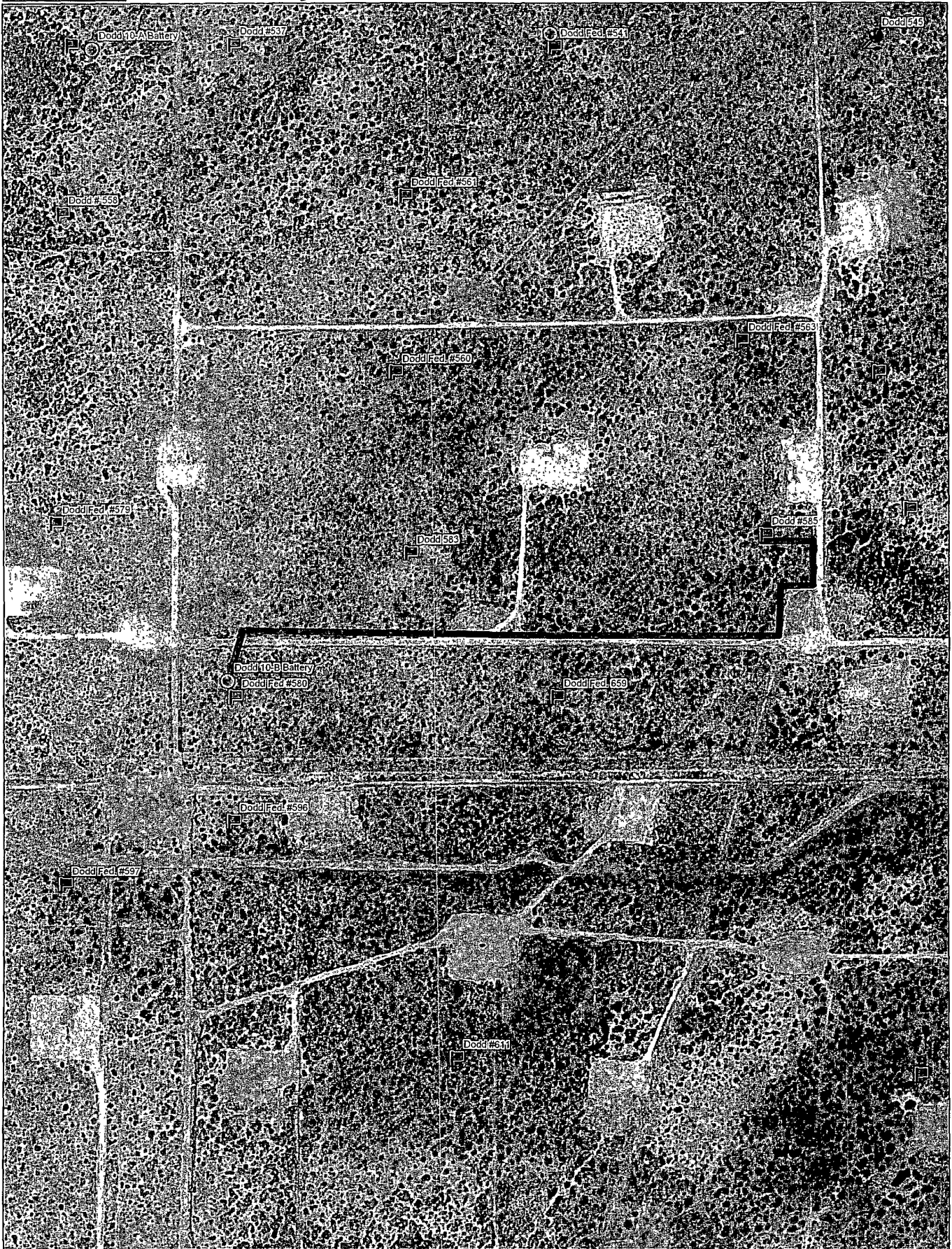
RED LAKE SE, N.M.





CONCHO
Project SENM/KP LONGHORN
Eddy/Lea Co., NM
SENM Shelf Area
Dodd Federal Unit #585
980' FSL 1840' FWL, UNIT N
SEC. 11, T17S, R29E

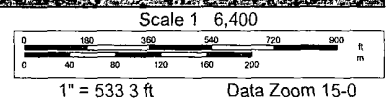
Author E.A.	Well: All Wells	Date 8 September 2011
Path: 11, 12, 13, 14, 15, 16, 17, 18, 19, 20, 21, 22, 23, 24	Scale 1: 2000	1 MILE RADIUS

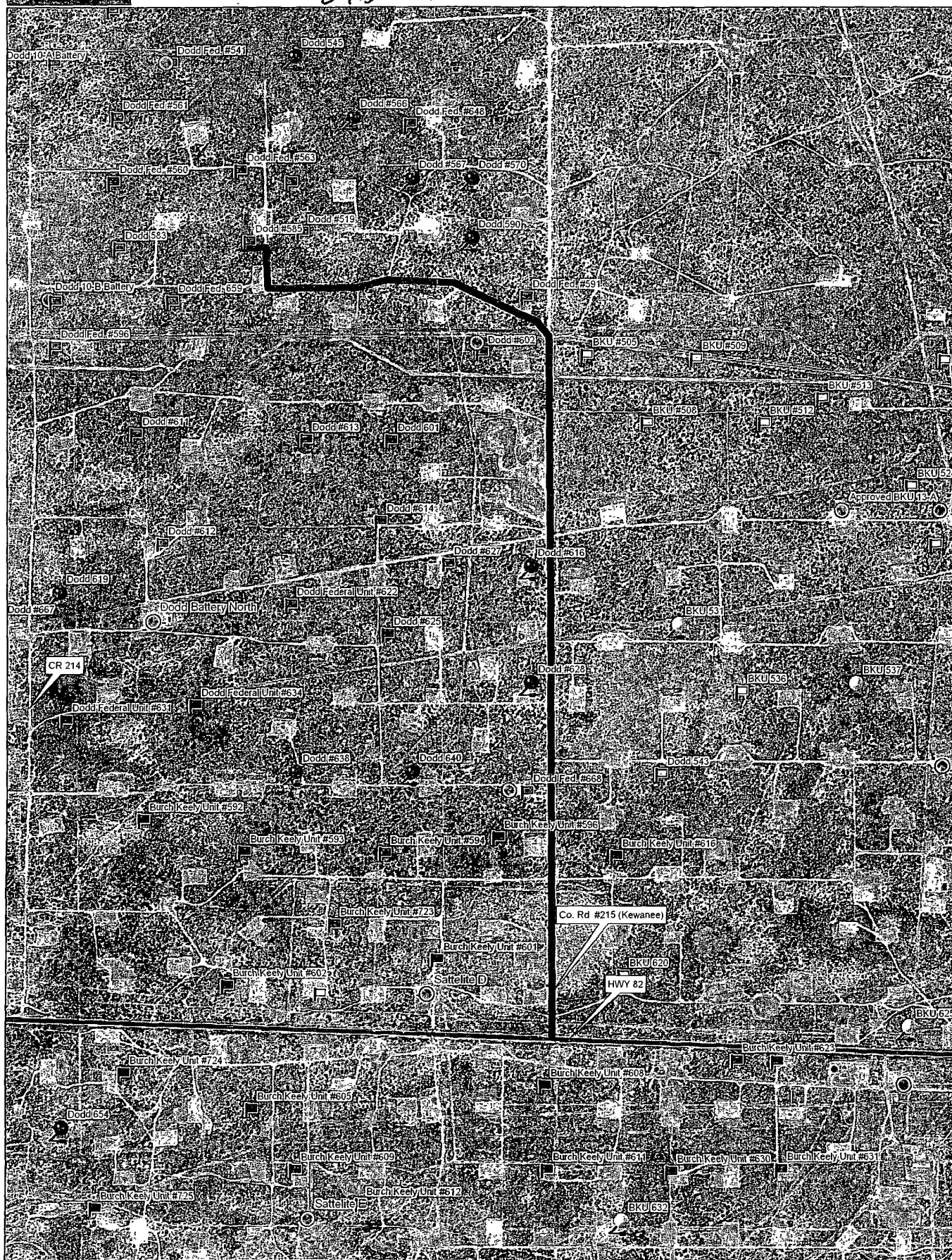


Data use subject to license.

© DeLorme XMap® 7

www.delorme.com





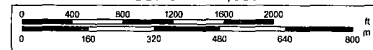
Data use subject to license.

© DeLorme XMap® 7.

www.delorme.com



Scale 1 : 17,600


$$1'' = 1,466.7 \text{ ft}$$

Data Zoom 13-5

MASTER DRILLING PROGRAM

1. Geologic Name of Surface Formation

Quaternary

2. Estimated Tops of Important Geologic Markers:

Quaternary	Surface
Rustler	220'
Salt	360'
Base of Salt	780'
Yates	950'
Seven Rivers	1235'
Queen	1845'
Grayburg	2220'
San Andres	2540'
Glorieta	4000'
Paddock	4075'
Blaine	4620'
Tubb	5520'

3. Estimated Depths of Anticipated Fresh Water, Oil and Gas

Water Sand	150'	Fresh Water
Grayburg	2220'	Oil/Gas
San Andres	2540'	Oil/Gas
Glorieta	4000'	Oil/Gas
Paddock	4075'	Oil/Gas
Blaine	4620'	Oil/Gas
Tubb	5520'	Oil/Gas

See
COA

No other formations are expected to give up oil, gas or fresh water in measurable quantities. Setting 13 3/8" casing to ~~300'~~ and circulating cement back to the surface will protect the surface fresh water sand. The Salt Section will be protected by setting 8 5/8" casing to ~~850'~~ and circulating cement, in a single or multi-stage job and/or with an ECP, back to the surface. Any shallower zones above TD, which contain commercial quantities of oil and/or gas, will have cement circulated across them. This will be achieved by cementing, with a single or multi-stage job, the 5 1/2" production casing back 200' into the intermediate casing, (but calculated to surface) to be run at TD. If wellbore conditions arise that require immediate action and/or a change to this program, COG Operating LLC personnel will always react to protect the wellbore and/or environment.

See
COA

4. Casing Program

See
COA

Hole Size	Interval	OD Casing	Weight	Grade	Jt., Condition	Jt.	brst/clps/ten
17 1/2"	0-300' 205	13 3/8"	48#	H-40orJ-55	ST&C/New	ST&C	9.22/3.943/15.8
11"	0-850' 1130	8 5/8"	24or32#	J-55	ST&C/New	ST&C	3.03/2.029/7.82
7 7/8"	0-TD	5 1/2"	15.5or17#	J-55orL-80	LT&C/New	LT&C	1.88/1.731/2.42

5. Cement Program

13 3/8" Surface Casing:

Class C w/ 2% CaCl₂ + 0.25 pps CF, 400 sx, yield 1.32, back to surface. 154% excess

8 5/8" Intermediate Casing:

11" Hole:

Single Stage: 50:50:10 C:Poz:Gel w/ 5% Salt +0.25% CF, 300 sx lead, yield-2.45 + Class C w/2% CaCl₂, 200 sx tail, yield-1.32, back to surface. 363% excess

Multi-Stage: Stage 1: Class C w/2% CaCl₂, 200 sx, yield - 1.32; 108% excess
Stage 2: 50:50:10 C:Poz:Gel w/ 5% Salt +0.25% CF, 300 sx, yield - 2.45, back to surface, 726% excess; assumption for tool is lost circulation. Multi stage tool to be set at approximately, depending on hole conditions, 350' (50' below the surface casing). Cement volumes will be adjusted proportionately for depth changes of multi stage tool.

See
COA

5 1/2" Production Casing:

Single Stage: LEAD 500 sx 35:65:6 C:Poz:Gel w/ 5% Salt + 5 pps LCM + 0.2% SMS + 0.3% FL-52A + 0.125 pps CF, yield-2.05; + TAIL 400 sx 50:50:2 C:Poz:Gel w/ 5% Salt + 3 pps LCM + 0.6% SMS + 1% FL-25 + 1% BA-58 + 0.3% FL-52A + 0.125 pps CF, yield-1.37, to 200' minimum tie back to intermediate casing. 76.8% open hole excess, cement calculated back to surface.

Multi-Stage: Stage 1: (Assumed TD of 4550') 500 sx 50:50:2 C:Poz:Gel w/ 5% Salt + 3 pps LCM + 0.6% SMS + 1% FL-25 + 1% BA-58 + 0.3% FL-52A + 0.125 pps CF,

See
COA

yield - 1.37, 34% excess; Stage 2: LEAD 450 sx 50:50:2 C:Poz:Gel w/ 5% Salt + 3 pps LCM + 0.6% SMS + 1% FL-25 + 1% BA-58 + 0.3% FL-52A + 0.125 pps CF, yield - 1.37, + TAIL 250 sx Class C w/ 0.3% R-3 + 1.5% CD-32, yield - 1.02 148% open hole excess, cement calculated back to surface. Multi stage tool to be set at approximately, depending on hole conditions, 2500'. Cement volumes will be adjusted proportionately for depth changes of multi stage tool, assumption for tool is water flow.

6. Minimum Specifications for Pressure Control

The blowout preventer equipment (BOP) shown in Exhibit #9 will consist of a double ram-type (2000 psi WP) preventer, and in some cases possibly a 2000 psi Hydril type annular preventer as provided for in Onshore Order #2. This unit will be hydraulically operated and the ram type preventer will be equipped with blind rams on top of 4 1/2" drill pipe rams on the bottom. A 13-5/8" or 11" BOP will be used, depending on the rig selected, during the drilling of the well. The BOP will be nipped up on the 13 3/8" surface casing with BOP equipment and tested to 2000 psi. When 11" BOP is used the special drilling flange will be utilized on the 13-3/8" head to allow testing the BOP with a retrievable test plug. After setting 8-5/8" the BOP will then be nipped up on the 8 5/8" intermediate casing and tested by a third party to 2000 psi and used continuously until total depth is reached. Pipe rams will be operationally checked each 24-hour period. Blind rams will be operationally checked on each trip out of the hole. These checks will be noted on the daily tour sheets. Other accessories to the BOP equipment (Exhibit #10) will include a Kelly cock and floor safety valve, choke lines and a choke manifold (Exhibit #11) with a 2000 psi WP rating.

The majority of the rigs currently in use have a 13-5/8" BOP, so no special provision is needed for most wells in the area for conventionally testing the BOP with a test plug. However, due to the vagaries of rig scheduling, it might be that one of the few rigs with 11" BOP's might be called upon to drill any specific well in the area. Note that intermediate hole size is always 11". Therefore, COG Operating LLC respectfully requests a variance to the requirement of 13-5/8" BOP on 13-3/8" casing. When that circumstance is encountered the special flange will be utilized to allow testing the entire BOP with a test plug, without subjecting the casing to test pressure. The special flange also allows the return to full-open capability if desired.

See COA

7. Types and Characteristics of the Proposed Mud System

The well will be drilled to TD with a combination of brine, cut brine and polymer mud system. The applicable depths and properties of this system are as follows:

DEPTH	TYPE	WEIGHT	VISCOSITY	WATERLOSS
0-300' 265	Fresh Water	8.5	28	N.C.
300-850' 1130	Brine	10	30	N.C.
850'-TD'	Cut Brine	8.7-9.2	30	N.C.

Sufficient mud materials will be kept at the well site to maintain mud properties and meet minimum lost circulation and weight increase requirements at all times.

8. Auxiliary Well Control and Monitoring Equipment

- A. Kelly cock will be kept in the drill string at all times.
- B. A full opening drill pipe-stabbing valve with proper drill pipe connections will be on the rig floor at all times.

9. Logging, Testing and Coring Program *See C&A*

- A. The electric logging program will consist of GR-Dual Laterolog, Spectral Density, Dual Spaced Neutron, CSNG Log and will be run from TD to Surface.
- B. Drill Stem test is not anticipated.
- C. No conventional coring is anticipated.
- D. Further testing procedures will be determined after the 5 ½" production casing has been cemented at TD, based on drill shows and log evaluation.

10. Abnormal Conditions, Pressure, Temperatures and Potential Hazards

No abnormal pressures or temperatures are anticipated. The estimated bottom hole at TD is 110 degrees and the estimated maximum bottom hole pressure is 2300 psig. Measurable gas volumes or Hydrogen Sulfide levels have not been encountered during drilling operations in this area, although a Hydrogen Sulfide Drilling Operation Plan is attached to this program. No major loss of circulation zones has been reported in offsetting wells.

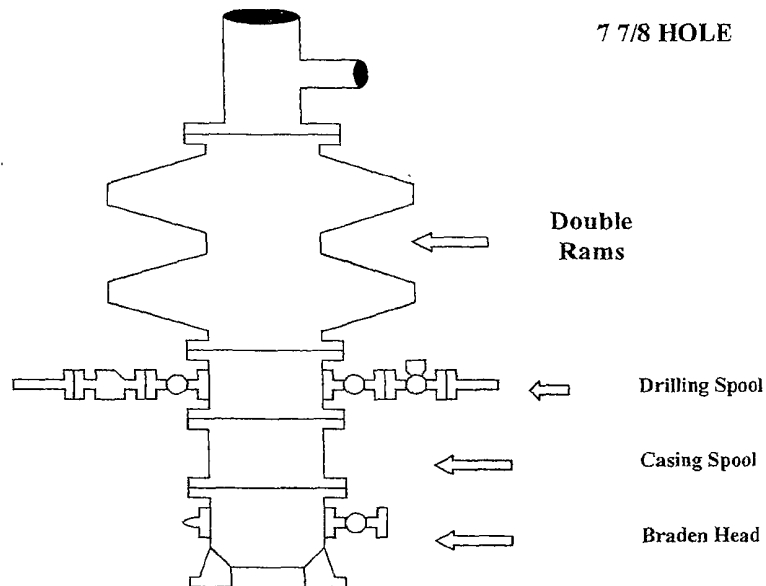
11. Anticipated Starting Date and Duration of Operations

Road and location work will not begin until approval has been received from the BLM. As this is a Master Drilling plan, please refer to the Form 3160-3 for the anticipated start date. Once commenced, drilling operations should be finished in approximately 10 days. If the well is productive, an additional 30 days will be required for completion and testing before a decision is made to install permanent facilities.

COG Operating LLC

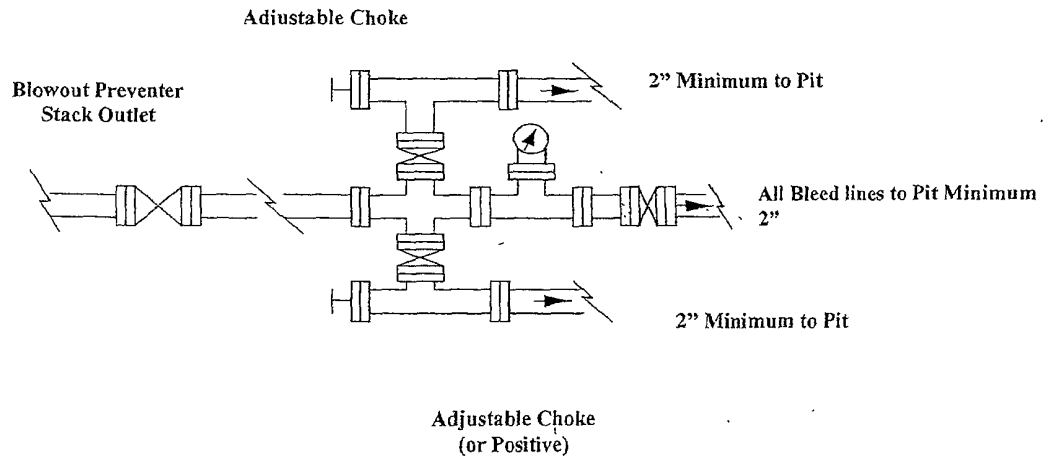
Exhibit #9

BOPE and Choke Schematic



Minimum 4" Nominal choke and kill lines

Choke Manifold Requirement (2000 psi WP)
No Annular Required

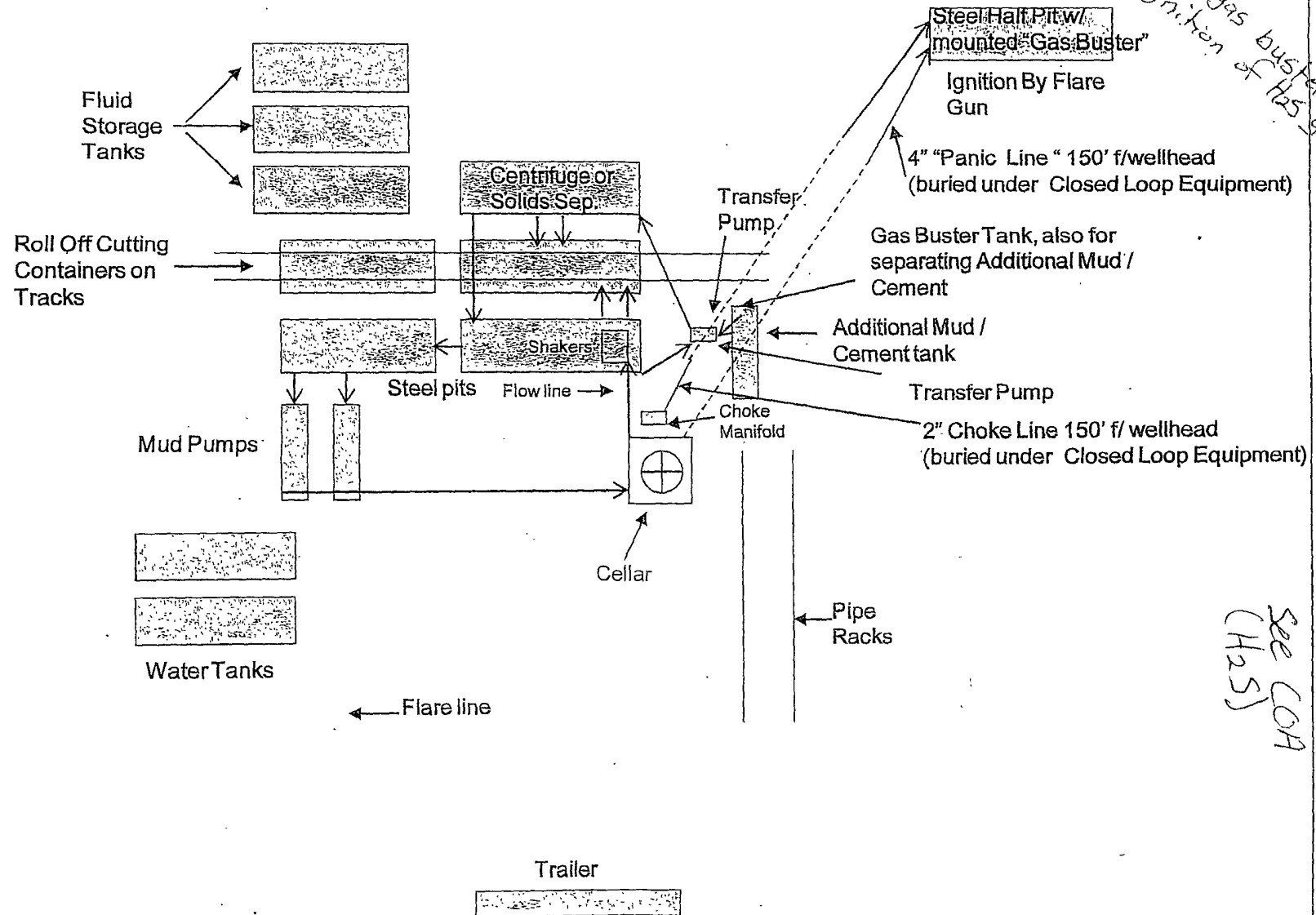


NOTES REGARDING THE BLOWOUT PREVENTERS**Master Drilling Plan
Eddy County, New Mexico**

1. Drilling nipple to be so constructed that it can be removed without use of a welder through rotary table opening, with minimum I.D. equal to preventer bore.
2. Wear ring to be properly installed in head.
3. Blow out preventer and all fittings must be in good condition, 2000 psi WP minimum.
4. All fittings to be flanged.
5. Safety valve must be available on rig floor at all times with proper connections, valve to be full 2000 psi WP minimum.
6. All choke and fill lines to be securely anchored especially ends of choke lines.
7. Equipment through which bit must pass shall be at least as large as the diameter of the casing being drilled through.
8. Kelly cock on Kelly.
9. Extension wrenches and hands wheels to be properly installed.
10. Blow out preventer control to be located as close to driller's position as feasible.
11. Blow out preventer closing equipment to include minimum 40-gallon accumulator, two independent sources of pump power on each closing unit installation all API specifications.

COG Operating LLC

Closed Loop Equipment Diagram



Closed Loop Operation & Maintenance Procedure

All drilling fluid circulated over shaker(s) with cuttings discharged into roll off container.

Fluid and fines below shaker(s) are circulated with transfer pump through centrifuge(s) or solids separator with cuttings and fines discharged into roll off container.

Fluid is continuously re-circulated through equipment with polymer added to aid separation of cutting fines.

Roll off containers are lined and de-watered with fluids re-circulated into system.

Additional tank is used to capture unused drilling fluid or cement returns from casing jobs.

This equipment will be maintained 24 hrs./day by solids control personnel and or rig crews that stay on location.

Cuttings will be hauled to either:

CRI (permit number R9166)

or

GMI (permit number 711-019-001)

dependent upon which rig is available to drill this well.

DISTRICT I --- CHECKLIST FOR INTENTS TO DRILL

33178

Operator Burnett Oil OGRID # 3080
 Well Name & # STATUS B Surface Type (F) (S) (P)
 Location: UL A Sect 13 Township 17 s, RNG 30 e, Sub-surface Type (F) (S) (P)

- A. Date C101 rec'd 12/14/2011 C101 reviewed 12/14/2011
- B. 1. Check mark, Information is OK on Forms:
 OGRID ☒, BONDING ☒, PROP CODE ☒, WELL # 7, SIGNATURE ☒
 2. Inactive Well list as of: 12/14/2011 # wells 205, # Inactive wells 3
 a. District Grant APD but see number of inactive wells:
 No letter required ☒; Sent Letter to Operator ☐, to Santa Fe ☐
 3. Additional Bonding as of: 12/14/2011
 a. District Denial because operator needs addition bonding:
 No Letter required ☒; Sent Letter to Operator ☐, To Santa Fe ☐
 b. District Denial because of inactive well list and Financial Assurance:
 No Letter required ☒; Sent Letter to Operator ☐, To Santa Fe ☐
- C. C102 YES ☒, NO ☐ Signature ☒
 1. Pool MAL Loco: 6-V, Code 97866
 a. Dedicated acreage 40, What Units 0
 b. SUR. Location Standard ☒: Non-Standard Location ☐
 c. Well shares acres: Yes ☒, No ☐, # of wells 2 plus this well # 1
 2. 2nd. Operator in same acreage, Yes ☐, No ☐
 Agreement Letter ☐, Disagreement letter ☐
 3. Intent to Directional Drill Yes ☒, No ☐
 a. Dedicated acreage 40, What Units 0
 b. Bottomhole Location Standard ☒, Non-Standard Bottomhole ☐
 4. Downhole Commingle: Yes ☐, No ☐
 a. Pool #2 ☐, Code ☐, Acres ☐
 Pool #3 ☐, Code ☐, Acres ☐
 Pool #4 ☐, Code ☐, Acres ☐
 5. POTASH Area Yes ☐, No ☒
- D. Blowout Preventer Yes ☐, No ☒
- E. H2S Yes ☐, No ☒
- F. C144 Pit Registration Yes ☒, No ☐
- G. Does APD require Santa Fe Approval:
 1. Non-Standard Location: Yes ☐, No ☒, NSL # ☐
 2. Non-Standard Proration: Yes ☐, No ☒, NSP # ☐
 3. Simultaneous Dedication: Yes ☐, No ☒, SD # ☐
 Number of wells ☐ Plus # ☐
 4. Injection order Yes ☐, No ☒; PMX # ☐ or WFX # ☐
 5. SWD order Yes ☐, NO ☒; SWD # ☐
 6. DHC from SF ☐; DHC-HOB ☐; Holding ☐

7. OCD Approval Date 12/18/11 API #30-015-39777
 8. Reviewers dm