

DISTRICT I
1625 N. FRENCH DR., HOBBS, NM 88240

DISTRICT II
1301 W. GRAND AVENUE, ARTESIA, NM 88210

DISTRICT III
1000 RIO BRAZOS RD., AZTEC, NM 87410

DISTRICT IV
11885 S. ST. FRANCIS DR., SANTA FE, NM 87505

State of New Mexico
Energy, Minerals & Natural Resources Department
OIL CONSERVATION DIVISION
1220 South St. Francis Dr.
Santa Fe, New Mexico 87505

RECEIVED
FEB 28 2012
NMOCD ARTESIA

Form C-102
Revised July 16, 2010
Submit to Appropriate
District Office

AMENDED REPORT

"As Drilled"
WELL LOCATION AND ACREAGE DEDICATION PLAT

API Number 30-015-39464	Pool Code 96836	Pool Name Red Lake; Glorieta-Yeso, Northeast
Property Code 302565	Property Name SPRUCE FEDERAL	Well Number 4
OGRID No. 229137	Operator Name COG OPERATING, LLC	Elevation 3578'

Surface Location

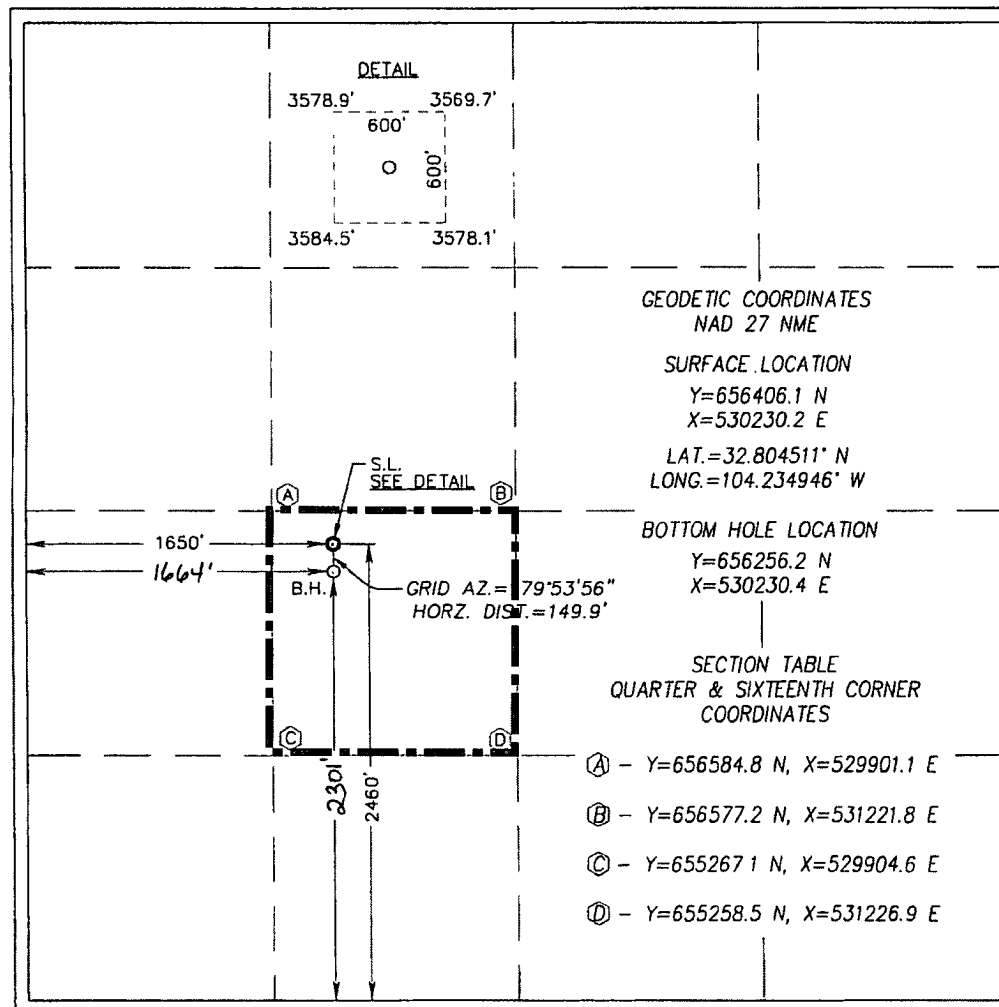
UL or lot No.	Section	Township	Range	Lot Idn	Feet from the	North/South line	Feet from the	East/West line	County
K	25	17-S	27-E		2460	SOUTH	1650	WEST	EDDY

Bottom Hole Location If Different From Surface

UL or lot No.	Section	Township	Range	Lot Idn	Feet from the	North/South line	Feet from the	East/West line	County
K	25	17-S	27-E		2301	SOUTH	1664	WEST	EDDY

Dedicated Acres 40	Joint or Infill	Consolidation Code	Order No.
-----------------------	-----------------	--------------------	-----------

NO ALLOWABLE WILL BE ASSIGNED TO THIS COMPLETION UNTIL ALL INTERESTS HAVE BEEN CONSOLIDATED OR A NON-STANDARD UNIT HAS BEEN APPROVED BY THE DIVISION



OPERATOR CERTIFICATION
I hereby certify that the information herein is true and complete to the best of my knowledge and belief, and that this organization either owns a working interest or unleased mineral interest in the land including the proposed bottom hole location or has a right to drill this well at this location pursuant to a contract with an owner of such mineral or working interest, or to a voluntary pooling agreement or a compulsory pooling order heretofore entered by the division.

Netha Aaron 2/7/12
Signature Date
Netha Aaron
Printed Name
oaron@concho.com
E-mail Address

SURVEYOR CERTIFICATION
I hereby certify that the well location shown on this plat was plotted from field notes of actual surveys made by me or under my supervision, and that the same is true and correct to the best of my belief.

JUNE 6, 2011

Date of Survey
Signature of Registered Professional Surveyor:
Ronald J. Eidson
3239
Certification Number: 3239
Name: Ronald J. Eidson 12641
DSS Rev: 8/12/11 JWSC W.O.: 11.13.1798