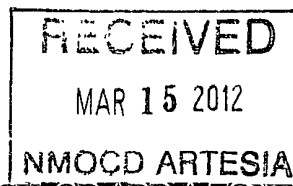


District I  
1625 N French Dr., Hobbs, NM 88240  
Phone (575) 393-6161 Fax (575) 393-0720  
District II  
811 S First St., Artesia, NM 88210  
Phone (575) 748-1283 Fax (575) 748-9720  
District III  
1000 Rio Brazos Road, Aztec, NM 87410  
Phone (505) 334-6178 Fax (505) 334-6170  
District IV  
1220 S St. Francis Dr., Santa Fe, NM 87505  
Phone (505) 476-3460 Fax (505) 476-3462

State of New Mexico  
Energy Minerals and Natural Resources  
Oil Conservation Division  
1220 South St. Francis Dr.  
Santa Fe, NM 87505

Form C-101  
Revised December 16, 2011

Permit



**APPLICATION FOR PERMIT TO DRILL, RE-ENTER, DEEPEN, PLUGBACK, OR ADD A ZONE**

Operator Name and Address LRE Operating, LLC, 1111 Bagby Street, Suite 4600, Houston, Texas 77002		OGRID Number 281994
Property Code 309873		API Number 30-015-40084
Property Name Welch RL State		Well No. 18

**Surface Location**

UL - Lot	Section	Township	Range	Lot Idn	Feet from	N/S Line	Feet From	E/W Line	County
D	28	17S	28E		430	N	330	W	EDDY

**Pool Information**

Artesia; Glorieta-Yeso	96830
------------------------	-------

**Additional Well Information**

Work Type A	Well Type Oil	Cable/Rotary Rotary	Lease Type State	Ground Level Elevation 3600.5
Multiple No	Proposed Depth 3,650'	Formation Yeso	Contractor United Drilling Inc	Spud Date 5/27/2013
Depth to Ground water: 40'		Distance from nearest fresh water well: 3.2 Miles		Distance to nearest surface water: 8.5 Miles

**Proposed Casing and Cement Program**

Type	Hole Size	Casing Size	Casing Weight/ft	Setting Depth	Sacks of Cement	Estimated TOC
Conductor	20"	14"	68.7	40	Ready Mix	Surface
Surface	12 1/4"	8 5/8"	24	425	300 sx	Surface
Production	7 7/8"	5 1/2"	17	3650	675 sx	Surface

**Casing/Cement Program: Additional Comments**

See Attached Well Plan Documentation

**Proposed Blowout Prevention Program**

Type	Working Pressure	Test Pressure	Manufacturer
XLT 11"	5000 PSI	2000 PSI	National Varco

I hereby certify that the information given above is true and complete to the best of my knowledge and belief.

I further certify that the drilling pit will be constructed according to NMOCD guidelines ☐, a general permit ☐, or an (attached) alternative OCD-approved plan ☒.

Signature:

*Sid Ashworth*

Printed name: Robert S. (Sid) Ashworth

Title: Production Engineer

E-mail Address: sashworth@limerockresources.com

Date:

3/12/12

Phone: 713-292-9526

**OIL CONSERVATION DIVISION**

Approved By:

*T. C. Shepard*

Title:

*Geologist*

Approved Date:

3/23/2012

Expiration Date

3/23/2014

Conditions of Approval Attached

District I  
1625 N. French Dr., Hobbs, NM 88240  
District II  
1301 W. Grand Avenue, Artesia, NM 88210  
District III  
1000 Rio Brazos Rd., Aztec, NM 87410  
District IV  
1220 S. St. Francis Dr., Santa Fe, NM 87505

State of New Mexico  
Energy, Minerals & Natural Resources Department  
**OIL CONSERVATION DIVISION**  
1220 South St. Francis Dr.  
Santa Fe, NM 87505

Form C-102  
Revised October 15, 2009  
Submit one copy to appropriate  
District Office

☐ AMENDED REPORT

**WELL LOCATION AND ACREAGE DEDICATION PLAT**

<sup>1</sup> API Number <b>30-015-40084</b>	<sup>2</sup> Pool Code <b>96830</b>	<sup>3</sup> Pool Name <b>ARTESIA; Glorieta 1/650</b>
<sup>4</sup> Property Code <b>309873</b>	<sup>5</sup> Property Name <b>WELCH RL STATE</b>	
<sup>6</sup> O&M No. <b>281994</b>	<sup>7</sup> Operator Name <b>LRE OPERATING, LLC</b>	<sup>8</sup> Well Number <b>18</b>
		<sup>9</sup> Elevation <b>3600.5</b>

<sup>10</sup> Surface Location

U/L or lot no.	Section	Township	Range	Lot Idn	Feet from the	North/South line	Feet from the	East/West line	County
<b>D</b>	<b>28</b>	<b>17 S</b>	<b>28 E</b>		<b>430</b>	<b>NORTH</b>	<b>330</b>	<b>WEST</b>	<b>EDDY</b>

<sup>11</sup> Bottom Hole Location If Different From Surface

U/L or lot no.	Section	Township	Range	Lot Idn	Feet from the	North/South line	Feet from the	East/West line	County

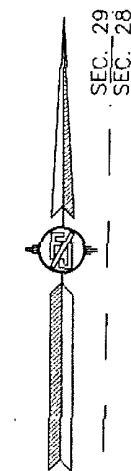
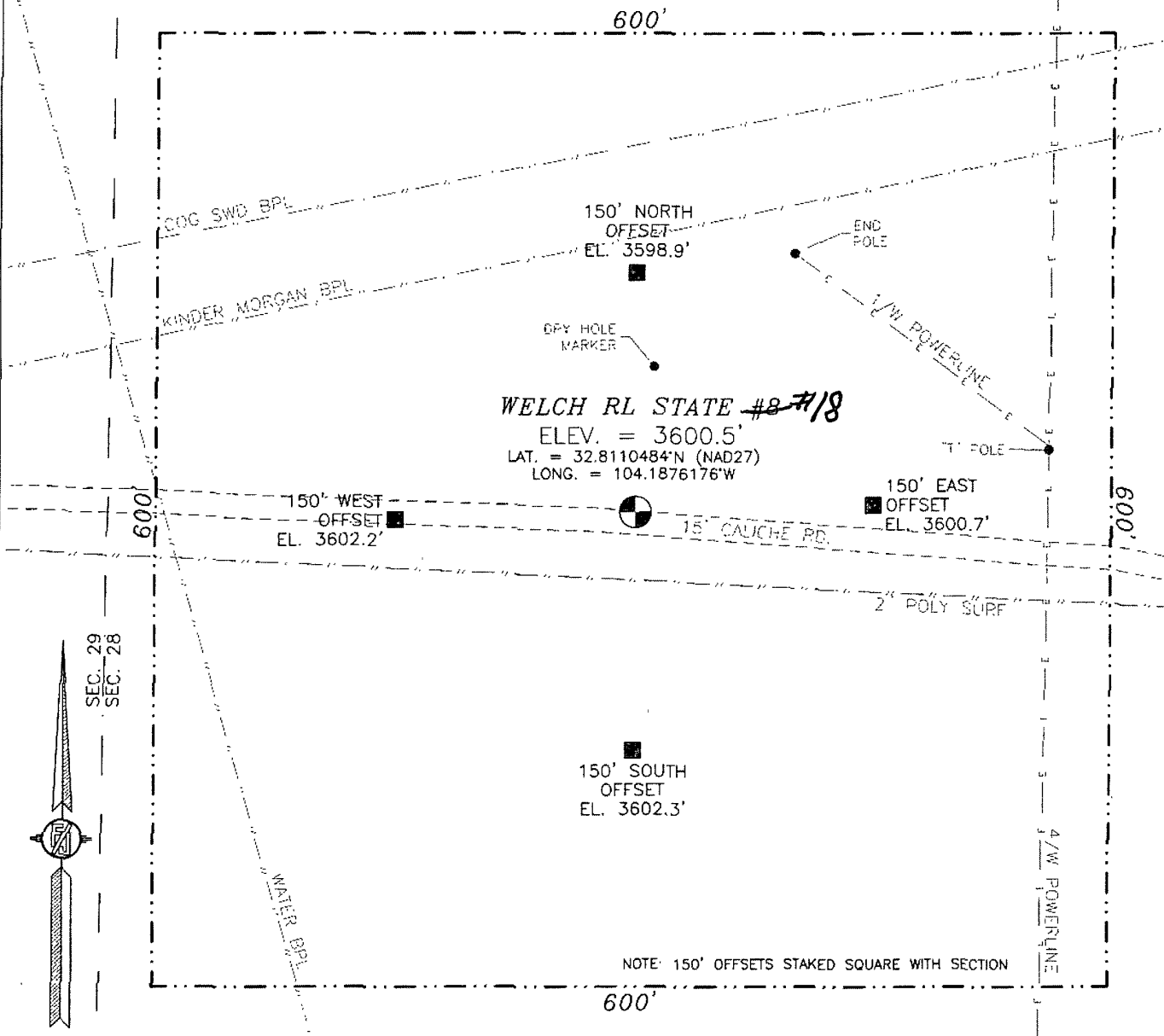
<sup>12</sup> Dedicated Acres <b>40</b>	<sup>13</sup> Joint or Infill	<sup>14</sup> Consolidation Code	<sup>15</sup> Order No.
--------------------------------------------	-------------------------------	----------------------------------	-------------------------

No allowable will be assigned to this completion until all interests have been consolidated or a non-standard unit has been approved by the division.

		<sup>17</sup> <b>OPERATOR CERTIFICATION</b> I hereby certify that the information contained herein is true and complete to the best of my knowledge and belief and that this organization either owns a working interest or unleased mineral interest in the land including the proposed bottom hole location or has a right to drill this well at this location pursuant to a contract with an owner of such a mineral or working interest, or to a voluntary pooling agreement or a compulsory pooling order heretofore entered by the division.	
NW CORNER SEC. 28 LAT. = 32.8122044°N LONG. = 104.1886742°W	N Q CORNER SEC. 28 LAT. = 32.8124134°N LONG. = 104.1802224°W  <b>WELCH RL STATE #8</b> ELEV. = 3600.5' LAT. = 32.8110484°N (NAD27) LONG. = 104.1876176°W	NE CORNER SEC. 28 LAT. = 32.8126237°N LONG. = 104.1717729°W	Signature: <i>Sid Ashworth</i> Date: <b>3/12/12</b>
W Q CORNER SEC. 28 LAT. = 32.8050697°N LONG. = 104.1887821°W	NOTE: LATITUDE AND LONGITUDE COORDINATES ARE SHOWN USING THE NORTH AMERICAN DATUM OF 1927 (NAD27), AND ARE IN DECIMAL DEGREE FORMAT.	E Q CORNER SEC. 28 LAT. = 32.8054451°N LONG. = 104.1718703°W	Printed Name: <b>SID ASHWORTH</b>
<sup>18</sup> <b>SURVEYOR CERTIFICATION</b> I hereby certify that the well location shown on this plat was plotted from field notes of actual surveys made by me or under my supervision and that the same is true and correct to the best of my belief.			Date of Survey: <b>DECEMBER 12, 2011</b>
SW CORNER SEC. 28 LAT. = 32.7979286°N LONG. = 104.1888769°W	S Q CORNER SEC. 28 LAT. = 32.7980996°N LONG. = 104.1804413°W	SE CORNER SEC. 28 LAT. = 32.7982679°N LONG. = 104.1719713°W	Signature and Seal of Professional Surveyor: <i>Raymond J. Milla</i> Certificate Number: <b>RAYMOND J. MILLA, PLS 12797</b> SURVEY NO. 732

SECTION 28, TOWNSHIP 17 SOUTH, RANGE 28 EAST, N.M.P.M.  
EDDY COUNTY, STATE OF NEW MEXICO

NOTE: THE LATITUDE AND LONGITUDE COORDINATES ARE SHOWN USING  
THE NORTH AMERICAN DATUM OF 1927 (NAD27), AND ARE IN  
DECIMAL DEGREE FORMAT.



0 10 50 100 200

SCALE 1" = 100'

DIRECTIONS TO LOCATION

FROM STATE HWY. 82 AND CALICHE CR #206 GO EAST ON HWY. 82  
0.45 MILES, TURN LEFT ON CALICHE ROAD AND GO NORTH 1.0 MILES,  
TURN RIGHT AND EAST 617' AND LOCATION IS ON NORTH EDGE OF  
ROAD

NOTE: 150' OFFSETS STAKED SQUARE WITH SECTION

LRE OPERATING, LLC  
WELCH RL STATE #8-#18

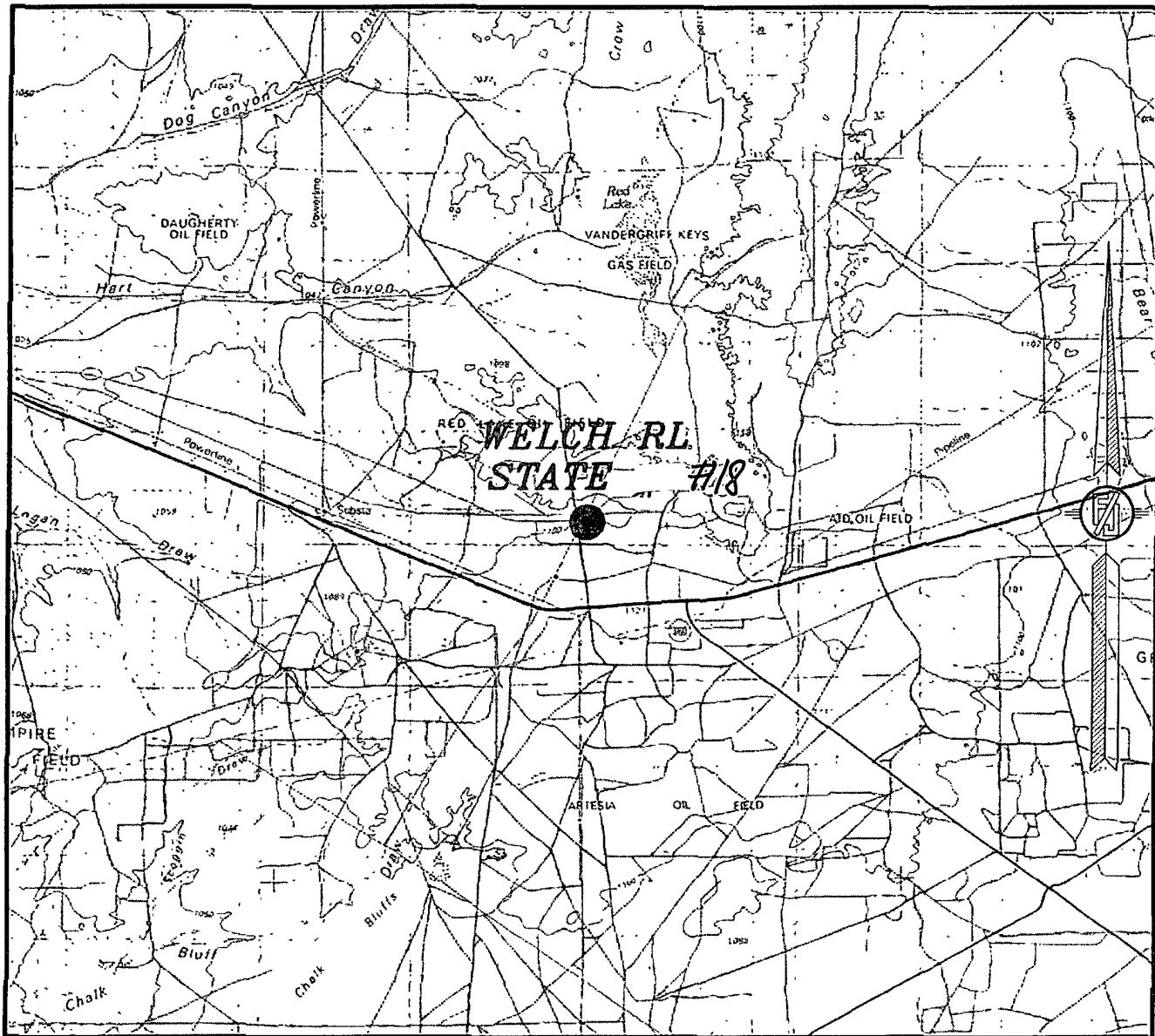
LOCATED 430 FT. FROM THE NORTH LINE  
AND 330 FT. FROM THE WEST LINE OF  
SECTION 28, TOWNSHIP 17 SOUTH,  
RANGE 28 EAST, N.M.P.M.  
EDDY COUNTY, STATE OF NEW MEXICO

DECEMBER 12, 2011

SURVEY NO. 732

MADRON SURVEYING, INC. 301 SOUTH CANAL CARLSBAD, NEW MEXICO  
(505) 234-3041

SECTION 28, TOWNSHIP 17 SOUTH, RANGE 28 EAST, N.M.P.M.  
 EDDY COUNTY, STATE OF NEW MEXICO  
 VICINITY MAP



NOT TO SCALE

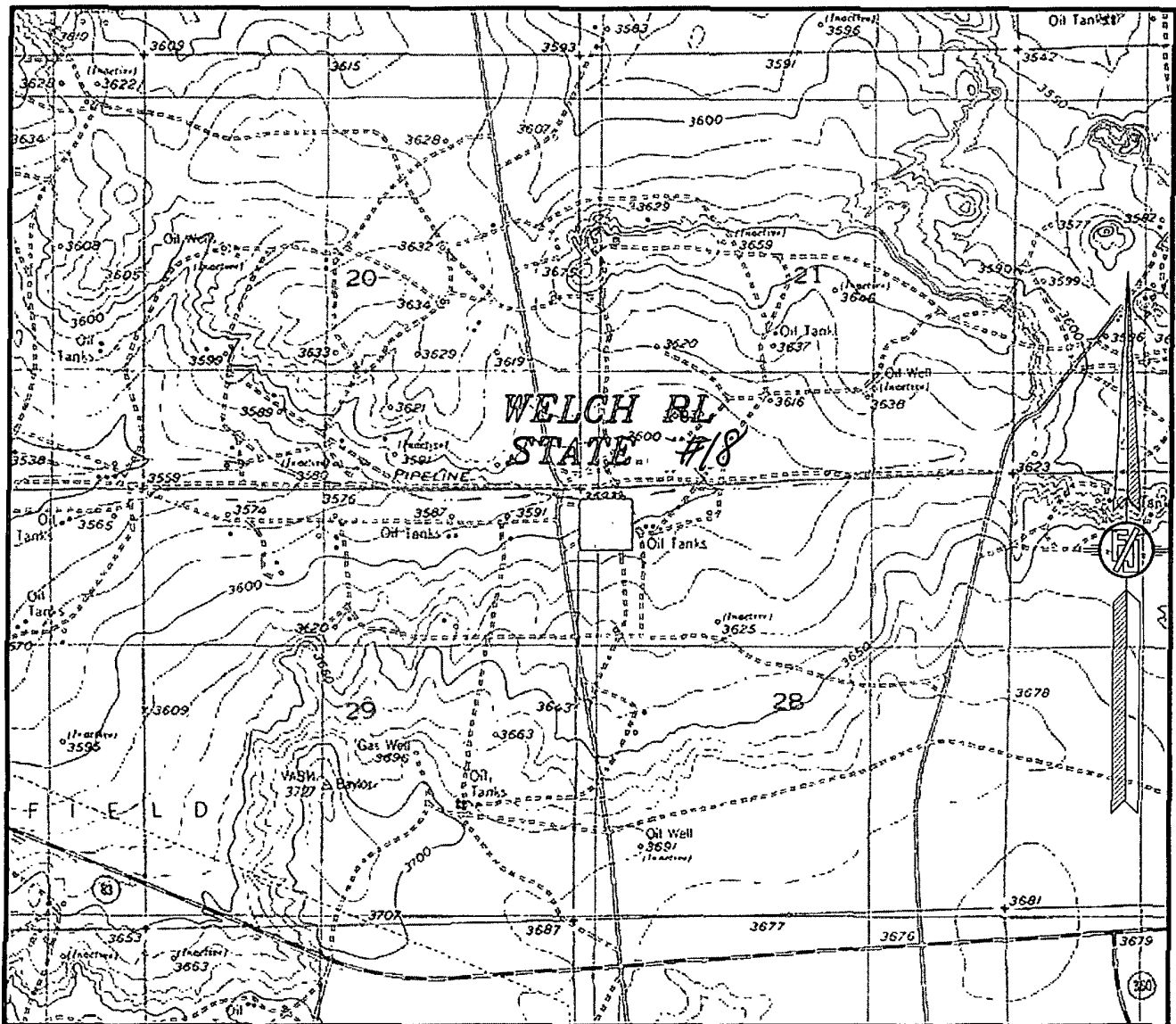
LRE OPERATING, LLC  
 WELCH RL STATE #18  
 LOCATED 430 FT. FROM THE NORTH LINE  
 AND 330 FT. FROM THE WEST LINE OF  
 SECTION 28, TOWNSHIP 17 SOUTH,  
 RANGE 28 EAST, N.M.P.M.  
 EDDY COUNTY, STATE OF NEW MEXICO

DECEMBER 12, 2011

SURVEY NO. 732

MADRON SURVEYING, INC. 351 SOUTH CANAL CARLSBAD, NEW MEXICO  
 (505) 234-3341

SECTION 28, TOWNSHIP 17 SOUTH, RANGE 28 EAST, N.M.P.M.  
EDDY COUNTY, STATE OF NEW MEXICO  
LOCATION VERIFICATION MAP



CONTOUR INTERVAL:  
RED LAKE

NOT TO SCALE

LRE OPERATING, LLC  
WELCH RL STATE #18  
LOCATED 430 FT. FROM THE NORTH LINE  
AND 330 FT. FROM THE WEST LINE OF  
SECTION 28, TOWNSHIP 17 SOUTH,  
RANGE 28 EAST, N.M.P.M.  
EDDY COUNTY, STATE OF NEW MEXICO

DECEMBER 12, 2011

SURVEY NO. 732

MADRON SURVEYING, INC. 101 SOUTH CANAL CARLSBAD, NEW MEXICO  
(505) 234-3341

# **LRE Operating LLC**

**Welch RL State #18'**

## **UNIT D, S28-T17S-R28E, EDDY COUNTY, NM**

### **Design: Closed Loop System with roll-off steel bins (pits)**

**CRI/HOBBS** will supply (2) bins (100 bbl) volume, rails and transportation relating to the Close Loop System. Specification of the Closed Loop System is attached.

Contacts: Gary Wallace (432) 638-4076 Cell (575) 393-1079 Office

### **Scomi Oil Tool: Supervisor – Armando Soto (432) 553-7979 Hobbs, NM**

Monitoring 24 Hour service

Equipment: Centrifuges – Derrick Brand  
Rig Shakers – Brandt Brand  
D-watering Unit  
Air pumps on location for immediate remediation process  
Layout of Close Loop System with bins, centrifuges and shakers attached.

Cuttings and associated liquids will be hauled to a State regulated third party disposal site (CRI or Controlled Recovery, Inc.). The disposal site permit is DFP = #R9166.

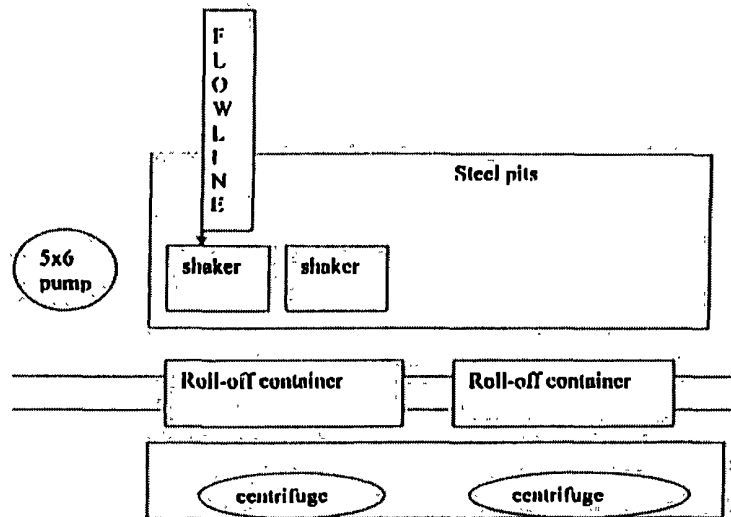
2- (250 bbl) tanks to hold fluid  
2-CRI bins with track system  
2-500 bbl frac tanks with fresh water  
2-500 bbl frac tanks for brine water

### **Operations:**

Closed Loop System equipment will be inspected daily by each tour and any necessary maintenance performed. Any leak in system will be repaired and/or contained immediately. OCD will be notified within 48 hours of any spill. Remediation process will start immediately.

### **Closure:**

During drilling operations all liquids, drilling fluids and cuttings will be hauled off via CRI equipment to DFP #R9166.



This will be maintained by 24 hour solids control personnel that stay on location.

**TOMMY WILSON**



**CLOSED LOOP  
SPECIALTY**

Office: 575.746.1689

Cell: 575.748.6367

**LRE Operating, LLC  
Drilling Plan**

Welch RL State #8 <sup>#18</sup>  
480 330' FNL 330' FWL  
D-S28-T17S-R28E  
Eddy County, NM

1. The elevation of the unprepared ground is 3600.5' feet above sea level.
2. The geologic name of the surface formation is Quaternary – Alluvium
3. A rotary rig will be utilized to drill the well to 3650' and run casing. This equipment will be rigged down and the well will be completed with a workover rig.
4. Proposed total depth is 3650'.
5. Estimated tops of geologic markers:

Quaternary – Alluvium	Surface
Seven Rivers	608'
Queen	1176'
Grayburg	1603'
San Andres	1914'
Glorieta	3305'
Yeso	3393'
TD	3650'

6. Estimated depths at which anticipated oil, gas, or other mineral bearing formations are expected to be encountered:

Seven Rivers	608'
Queen	1176'
Grayburg	1603'
San Andres	1914'
Glorieta	3305'
Yeso	3393'
TD	3650'

7. Proposed Casing and Cement program is as follows:

Type	Hole Size	Casing Size	Weight	Grade	Thread	Depth	Sacks	Density	Yield	Components
Conductor	20	14	68.7	B	Weld	40				Ready Mix to surface
Surface	12 1/4	8 5/8	24	J-55	ST&C	425	300	14.8	1.35	CI C Cmt + 0.25 lbs/sk Cello Flake + 2% CaCl <sub>2</sub>
Production	7 7/8	5 1/2	17	J-55	ST&C	3650	300	12.8	1.90	(35:65) Poz/CI C Cmt + 5% NaCl + 0.125 lbs/sk Cello Flake + 5 lbs/sk LCM-1 + 0.6% R-3 + 6% Gel
							375	14.8	1.33	Class C w/ 0.60% R-3 and 1/4 pps cello flake



## 8. Pressure Control Equipment

The blowout preventer equipment (BOP) will consist of a 2000 psi double ram type preventer, a bag-type (Hydril) preventer and rotating head. Both units will be hydraulically operated and the ram type preventer will be equipped with blind rams on top and drill pipe rams on bottom. A 2M BOP will be installed on the 8 5/8" surface casing and utilized continuously until the depth is reached. All casing strings will be tested as per Onshore Order #2.

Pipe rams will be operated and checked each 24 hour period and each time the drill pipe is out of the hole. These functional tests will be documented on the daily drilling logs.

The BOP equipment will consist of the following:

- Annular preventers
- Double ram with blind rams and pipe rams.
- Drilling spool, or blowout preventer with 2 side outlets (choke side shall be a 3 inch minimum diameter, kill side will be at least 2 inch diameter)
- Kill line (2 inch minimum)
- A minimum of 2 choke line valves (2 inch minimum)
- 3 inch diameter choke line
- 2 kill valves, one of which will be a check valve (2 inch minimum)
- 2 chokes
- pressure gauge on choke manifold
- Upper Kelly cock valve with handle available
- Safety valve and subs to fit all drill string connections in use
- All BOPE connections subjected to well pressure will be flanged, welded, or clamped.
- Fill-up line above the uppermost preventer.

## 9. Proposed Mud Program is as follows

Depth	0-425	425-3350	3350-3650
Mud Type	Fresh Water	Brine	Brine w/ Gel & Starch
Properties			
MW	8.5-9.2	9.9-10.2	9.9-10.2
pH	10	10-11.5	10-11.5
WL	NC	NC	15-10
Vis	28-34	30-32	34-36
MC	NC	NC	1
Solids	NC	<1%	<2%

## 10. Testing, Logging and Coring Program

Testing Program: No drill stem tests are anticipated.

Electric Logging Program: TD-Surface casing: GR-DLL, GR-CND. Surface casing set @ 425': G/R/Neutron.

Coring Program: None

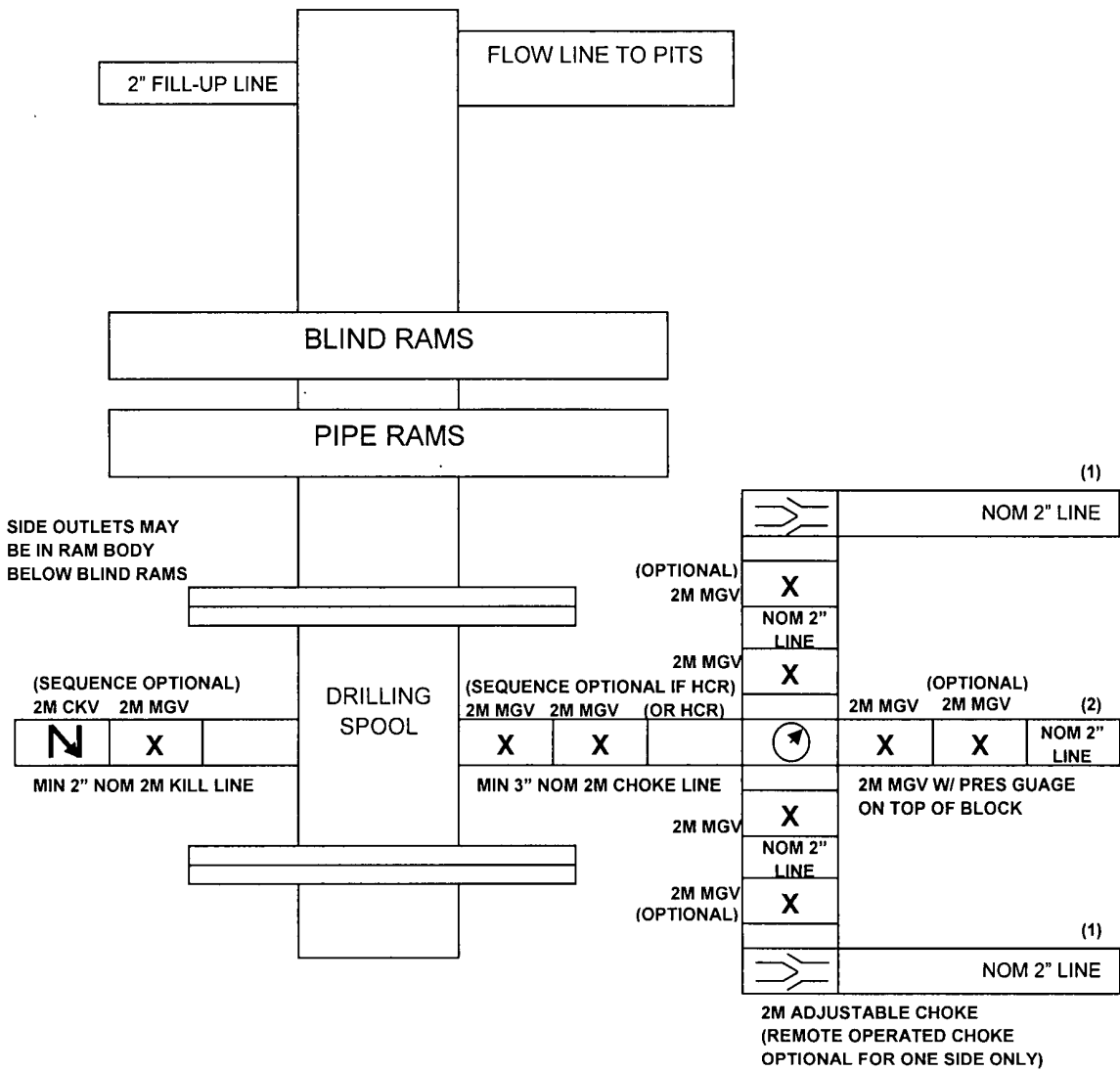
**11. Potential Hazards:**

No abnormal temperatures or pressures are expected. There is no known presence of H<sub>2</sub>S in this area. If H<sub>2</sub>S is encountered the operator will comply with the provisions of Onshore Oil and Gas Order No. 6. All personnel will be familiar with all aspects of safe operation of equipment being used to drill this well. Estimated BHP 1606 psi based on 0.44 x TD. The estimated BHT is 114 degrees F.

**12. Duration of Operations:**

Anticipated spud date will be soon after approval and as soon as a rig will be available. Move in operations and drilling is expected to take 7 days. An additional 20 days will be needed to complete the well and to construct surface facilities.

2M BOP SCHEMATIC



- (1) Line to mud gas separator and/or pit
- (2) Bleed line to pit
- MGV = Manual Gate Valve
- CKV = Check Valve
- HCR = Hydraulically Controlled Remote Valve

# HYDROGEN SULFIDE (H<sub>2</sub>S) CONTINGENCY PLAN

**Assumed 100 ppm ROE = 3000'**

**100 ppm H<sub>2</sub>S concentration shall trigger activation of this plan.**

## Emergency Procedures

**In the event of a release of gas containing H<sub>2</sub>S, the first responder(s) must**

- **Isolate the area and prevent entry by other persons into the 100 ppm ROE.**
- **Evacuate any public places encompassed by the 100 ppm ROE.**
- **Be equipped with H<sub>2</sub>S monitors and air packs in order to control the release.**
- **Use the "buddy system" to ensure no injuries occur during the response**
- **Take precautions to avoid personal injury during this operation.**
- **Contact operator and/or local officials to aid in operation. See list of phone numbers attached.**
- **Have received training in the**
  - **Detection of H<sub>2</sub>S, and**
  - **Measures for protection against the gas,**
  - **Equipment used for protection and emergency response.**

## Ignition of Gas source

Should control of the well be considered lost and ignition considered, take care to protect against exposure to Sulfur Dioxide (SO<sub>2</sub>). Intentional ignition must be coordinated with the NMOCD and local officials. Additionally the NM State Police may become involved. NM State Police shall be the Incident Command on scene of any major release. Take care to protect downwind whenever this is an ignition of the gas.

## **Characteristics of H<sub>2</sub>S and SO<sub>2</sub>**

<b>Common Name</b>	<b>Chemical Formula</b>	<b>Specific Gravity</b>	<b>Threshold Limit</b>	<b>Hazardous Limit</b>	<b>Lethal Concentration</b>
<b>Hydrogen Sulfide</b>	<b>H<sub>2</sub>S</b>	<b>1.189 Air = 1</b>	<b>10 ppm</b>	<b>100 ppm/hr</b>	<b>600 ppm</b>
<b>Sulfur Dioxide</b>	<b>SO<sub>2</sub></b>	<b>2.21 Air = 1</b>	<b>2 ppm</b>	<b>N/A</b>	<b>1000 ppm</b>

## **Contacting Authorities**

Lime Rock Resources personnel must liaison with local and state agencies to ensure a proper response to a major release. Additionally, the OCD must be notified of the release as soon as possible but no later than 4 hours. Agencies will ask for information such as type and volume of release, wind direction, location of release, etc. Be prepared with all information available including directions to site. The following call list of essential and potential responders has been prepared for use during a release. Lime Rock Resources response must be in coordination with the State of New Mexico's "Hazardous Materials Emergency Response Plan" (HMER).

# H<sub>2</sub>S CONTINGENCY PLAN EMERGENCY CONTACTS

**Company Office –Lime Rock Resources** 713-292-9510  
**Answering Service (During Non-Office Hours)** 713-292-9555

## Key Personnel

<u>Name</u>	<u>Title</u>	<u>Phone Number</u>
Richard Ghiselin.	Production Engineer	713-345-2136 Cell: 218-507-0386
Mike Barrett	Production Supervisor	575-623-8424 Cell: 505-353-2644

---

Ambulance	911
State Police	575-746-2703
City Police	575-746-2703
Sheriff's Office	575-746-9888
Fire Department	575-746-2701
Local Emergency Planning Committee	575-746-2122
New Mexico Oil Conservation Division	575-748-1283

## Carlsbad

Ambulance	911
State Police	575-8885-3137
City Police	575-885-2111
Sheriff's Office	575-887-7551
Fire Department	575-887-3798
Local Emergency Planning Committee	575-887-6544
US Bureau of Land Management	575-887-6544

New Mexico Emergency Response Commission (Santa Fe)	505-476-9600
24 Hour	505-827-9126
New Mexico State Emergency Operations Center	505-476-9635
National Emergency Response Center (Washington, DC)	800-424-8802

## Other

Boots & Coots IWC	800-256-9688 or 281-931-8884
Cudd PressureControl	915-699-0139 or 915-563-3356
Halliburton	575-746-2757
B. J. Services	575-746-3569
Flight For Life – 4000 24 <sup>th</sup> St. Lubbock, Texas	806-743-9911
Aerocare – R3, Box 49F, Lubbock, Texas	806-747-8923
Med Flight Air Amb – 2301 Yale Blvd SE #D3, Albuquerque, NM	505-842-4433
S B Air Med Service – 2505 Clark Carr Loop SE, Albuquerque, NM	505-842-4949