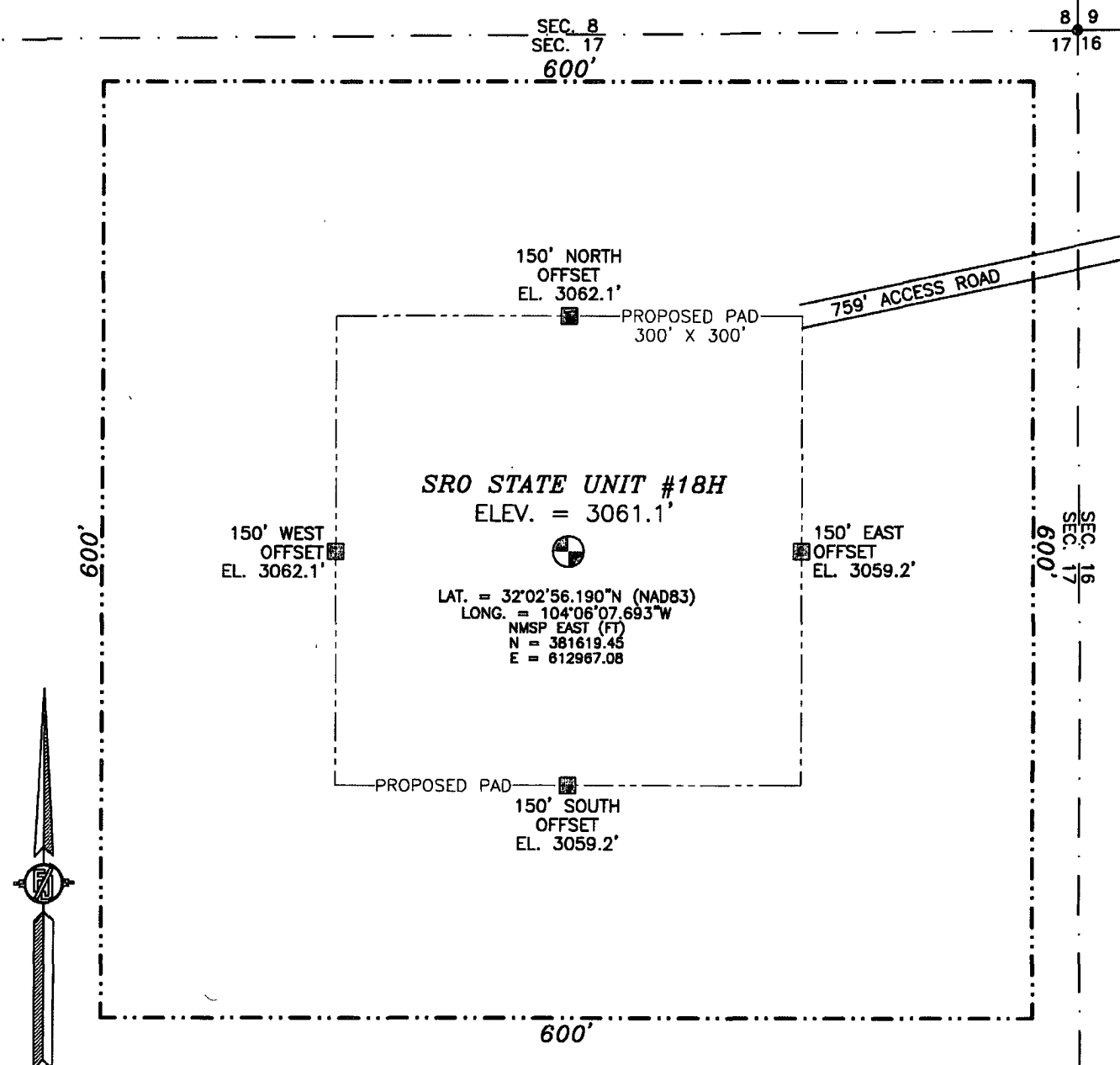


RECEIVED  
MAR - 5 2012  
NMOCD ARTESIA

SECTION 17, TOWNSHIP 26 SOUTH, RANGE 28 EAST, N.M.P.M.  
EDDY COUNTY, STATE OF NEW MEXICO



010 50 100 200

SCALE 1" = 100'

**DIRECTIONS TO LOCATION**

FROM U.S. HWY 285 AND CALICHE CR. #724 (WHITE'S CITY RD.) GO  
WEST ON CR. 724 2.0 MILES TURN LEFT ON CALICHE LEASE ROAD  
AND GO SOUTH-SOUTHEAST 0.9 MILES TO A PROPOSED ROAD  
SURVEY AND FOLLOW FLAGS SOUTHWEST 759' TO THE NORTHEAST  
CORNER OF PROPOSED PAD FOR THIS LOCATION.

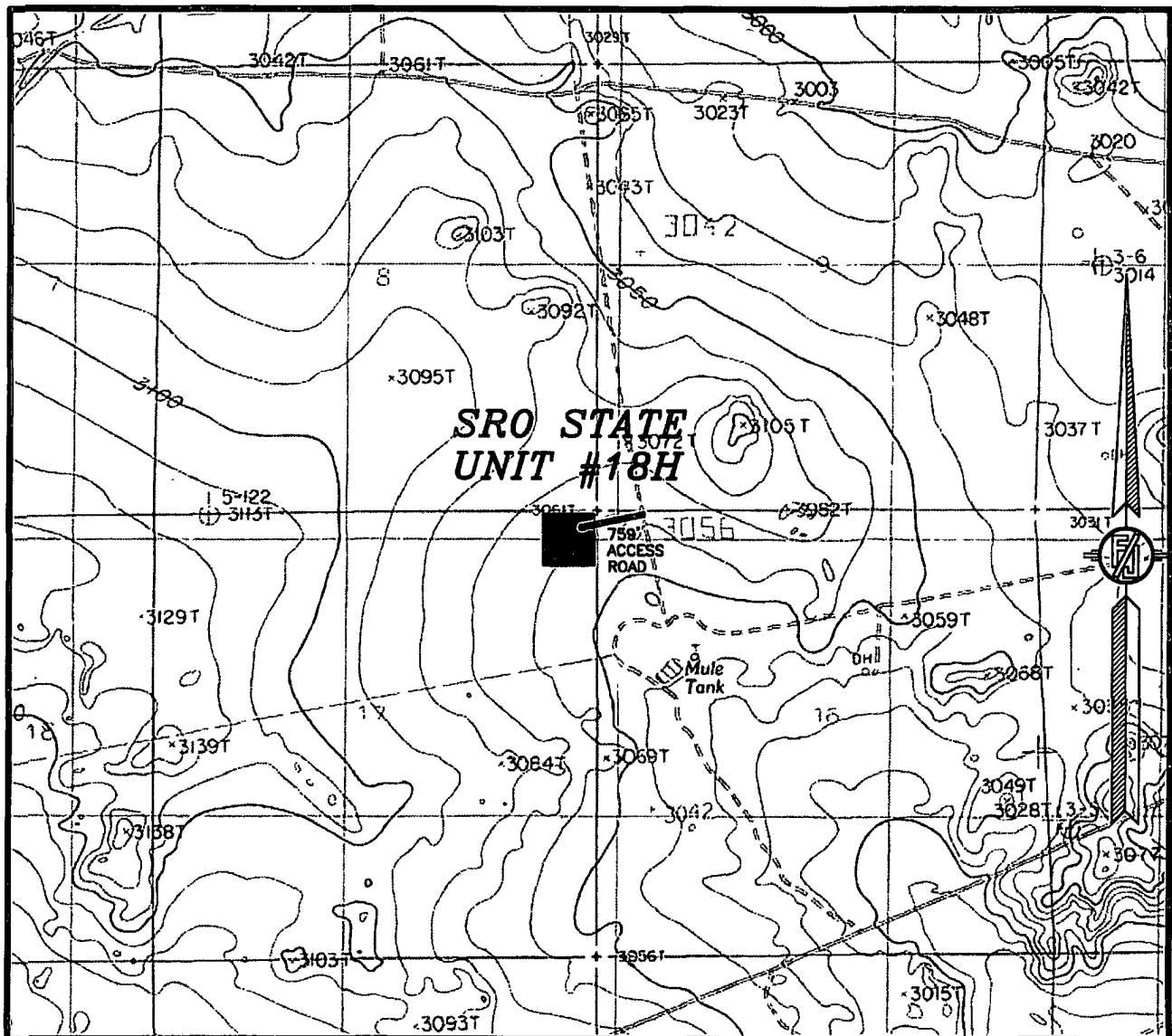
**COG OPERATING, LLC**  
**SRO STATE UNIT #18H**  
LOCATED 330 FT. FROM THE NORTH LINE  
AND 330 FT. FROM THE EAST LINE OF  
SECTION 17, TOWNSHIP 26 SOUTH,  
RANGE 28 EAST, N.M.P.M.  
EDDY COUNTY, STATE OF NEW MEXICO

SURVEY NO. 815

FEBRUARY 14, 2012

MADRON SURVEYING, INC. 301 SOUTH CANAL (575) 234-3341 CARLSBAD, NEW MEXICO

SECTION 17, TOWNSHIP 26 SOUTH, RANGE 28 EAST, N.M.P.M.  
EDDY COUNTY, STATE OF NEW MEXICO  
LOCATION VERIFICATION MAP



USGS QUAD MAP:  
RED BLUFF

NOT TO SCALE

COG OPERATING, LLC  
SRO STATE UNIT #18H  
LOCATED 330 FT. FROM THE NORTH LINE  
AND 330 FT. FROM THE EAST LINE OF  
SECTION 17, TOWNSHIP 26 SOUTH,  
RANGE 28 EAST, N.M.P.M.  
EDDY COUNTY, STATE OF NEW MEXICO

FEBRUARY 14, 2012

SURVEY NO. 815

MADRON SURVEYING, INC. 301 SOUTH CANAL CARLSBAD, NEW MEXICO  
(575) 234-3341