

District I
1625 N French Dr., Hobbs, NM 88240
Phone (575) 393-6161 Fax (575) 393-0720
District II
811 S First St., Artesia, NM 88210
Phone (575) 748-1283 Fax (575) 748-9720
District III
1000 Rio Brazos Road, Aztec, NM 87410
Phone (505) 334-6178 Fax (505) 334-6170
District IV
1220 S St. Francis Dr., Santa Fe, NM 87505
Phone (505) 476-3460 Fax (505) 476-3462

State of New Mexico

Form C-101
Revised December 16, 2011

RECEIVED
JUL 16 2012
NMOCD ARTESIA

Energy Minerals and Natural Resources
Oil Conservation Division
1220 South St. Francis Dr.
Santa Fe, NM 87505

Permit



APPLICATION FOR PERMIT TO DRILL, RE-ENTER, DEEPEN, PLUGBACK, OR ADD A ZONE

| | | |
|--|--|--|
| ¹ Operator Name and Address Lime Rock Resources II-A, L.P. 1111 Bagby Street, Suite 4600 Houston, Texas 77042 | | ² OGRID Number 277558 |
| ⁴ Property Code 39345 | ³ Property Name Waldrop 13 O | ⁵ API Number 30-015-90494 ⁶ Well No. #2 |

⁷ Surface Location

| | | | | | | | | | |
|---------------|---------------|-----------------|--------------|---------|------------------|---------------|-------------------|---------------|----------------|
| UL - Lot O | Section 13 | Township 18S | Range 26E | Lot Idn | Feet from 990 | N/S Line S | Feet From 1650 | E/W Line E | County Eddy |
|---------------|---------------|-----------------|--------------|---------|------------------|---------------|-------------------|---------------|----------------|

⁸ Pool Information

| | |
|------------------------|-------|
| Red Lake, Gloneta-Yeso | 51120 |
|------------------------|-------|

Additional Well Information

| | | | | |
|-------------------------------|---------------------------------------|--|--|--|
| ⁹ Work Type N | ¹⁰ Well Type O | ¹¹ Cable/Rotary R | ¹² Lease Type P | ¹³ Ground Level Elevation 3294.2 |
| ¹⁴ Multiple N | ¹⁵ Proposed Depth 4700' | ¹⁶ Formation Yeso | ¹⁷ Contractor United Drilling, Inc | ¹⁸ Spud Date After 07/15/2012 |
| Depth to Ground water 58 Feet | | Distance from nearest fresh water well. 0.45 Miles | | Distance to nearest surface water 1.24 Miles |

¹⁹ Proposed Casing and Cement Program

| Type | Hole Size | Casing Size | Casing Weight/ft | Setting Depth | Sacks of Cement | Estimated TOC |
|------------|-----------|-------------|------------------|---------------|-----------------|---------------|
| Conductor | 26" | 20" | 91.5 | 40 | Ready Mix | Surface |
| Surface | 12-1/4" | 8-5/8" | 24 | 425 | 300 | Surface |
| Production | 7-7/8" | 5-1/2" | 17 | 4700 | 875 | Surface |
| | | | | | | |
| | | | | | | |

Casing/Cement Program: Additional Comments

Proposed Blowout Prevention Program

| Type | Working Pressure | Test Pressure | Manufacturer |
|---------|------------------|---------------|----------------|
| XLT 11" | 5000 | 2000 | National Varco |

I hereby certify that the information given above is true and complete to the best of my knowledge and belief

I further certify that the drilling pit will be constructed according to NMOCD guidelines ☐, a general permit ☐, or an (attached) alternative OCD-approved plan ☒.

Signature:

Printed name: Sid Ashworth

Title: Operations Manager

E-mail Address: sashworth@limerockresources.com

Date:

Phone: 713-292-9568

OIL CONSERVATION DIVISION

Approved By

Title

Approved Date:

Expiration Date:

Conditions of Approval Attached

District I
1625 N. French Dr., Hobbs, NM 88240
Phone: (575) 393-6161 Fax: (575) 393-0720
District II
811 S. First St., Artesia, NM 88210
Phone: (575) 748-1283 Fax: (575) 748-9720
District III
1000 Rio Brazos Road, Aztec, NM 87410
Phone: (505) 334-6178 Fax: (505) 334-6170
District IV
1220 S. St. Francis Dr., Santa Fe, NM 87505
Phone: (505) 476-3460 Fax: (505) 476-3462

State of New Mexico
Energy, Minerals & Natural Resources Department
OIL CONSERVATION DIVISION
1220 South St. Francis Dr.
Santa Fe, NM 87505

Form C-102
Revised August 1, 2011
Submit one copy to appropriate
District Office

☐ AMENDED REPORT

WELL LOCATION AND ACREAGE DEDICATION PLAT

| | | |
|---|--|---|
| ¹ API Number 30-015-40494 | ² Pool Code 51120 | ³ Pool Name RED LAKE; GLORIA-YESO |
| ⁴ Property Code 39345 | ⁵ Property Name WALDROP "13" O | |
| ⁷ OGRID No. 277558 | ⁸ Operator Name LIME ROCK RESOURCES II-A, L.P. | ⁶ Well Number 2 |
| | | ⁹ Elevation 3294.2 |

¹⁰ Surface Location

| UL or lot no. | Section | Township | Range | Lot Idn | Feet from the | North/South line | Feet from the | East/West line | County |
|---------------|---------|----------|-------|---------|---------------|------------------|---------------|----------------|--------|
| O | 13 | 18 S | 26 E | | 990 | SOUTH | 1650 | EAST | EDDY |

¹¹ Bottom Hole Location If Different From Surface

| UL or lot no. | Section | Township | Range | Lot Idn | Feet from the | North/South line | Feet from the | East/West line | County |
|---------------|---------|----------|-------|---------|---------------|------------------|---------------|----------------|--------|
| | | | | | | | | | |

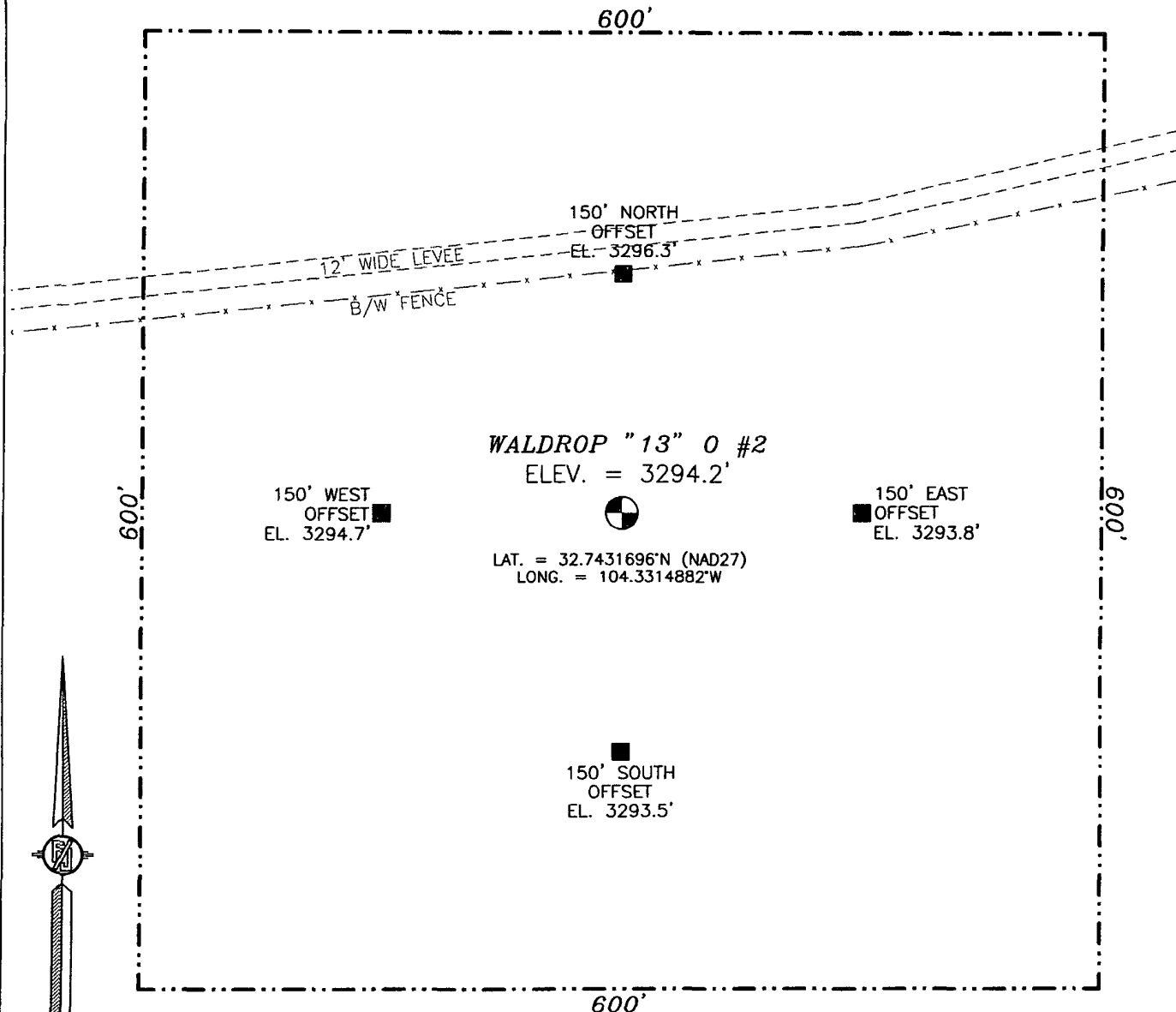
| | | | |
|-------------------------------------|-------------------------------|----------------------------------|-------------------------|
| ¹² Dedicated Acres 40 | ¹³ Joint or Infill | ¹⁴ Consolidation Code | ¹⁵ Order No. |
|-------------------------------------|-------------------------------|----------------------------------|-------------------------|

No allowable will be assigned to this completion until all interests have been consolidated or a non-standard unit has been approved by the division.

| | | | | |
|---|--|--|--|--|
| <p>S89°27'42"W 2692.34 FT</p> <p>NW CORNER SEC. 13 LAT. = 32.7550409°N LONG. = 104.343462°W</p> <p>COMPUTED</p> | | <p>S89°27'42"W 2692.34 FT</p> <p>NE CORNER SEC. 13 LAT. = 32.7551800°N LONG. = 104.3259527°W</p> <p>COMPUTED</p> | | <p>¹⁷ OPERATOR CERTIFICATION I hereby certify that the information contained herein is true and complete to the best of my knowledge and belief, and that this organization either owns a working interest or unleased mineral interest in the land including the proposed bottom hole location or has a right to drill this well at this location pursuant to a contract with an owner of such a mineral or working interest, or to a voluntary pooling agreement or a compulsory pooling order heretofore entered by the division.</p> <p><i>[Signature]</i> 7/11/12 Signature Date SID ASHWORTH Printed Name sashwarth@limerockresources.com E-mail Address</p> |
| <p>COMPUTED</p> <p>NOTE: LATITUDE AND LONGITUDE COORDINATES ARE SHOWN USING THE NORTH AMERICAN DATUM OF 1927 (NAD27), AND ARE IN DECIMAL DEGREE FORMAT.</p> | | <p>COMPUTED</p> | | |
| <p>COMPUTED</p> <p>WALDROP "13" O #2 ELEV. = 3294.2' LAT. = 32.7431696°N (NAD27) LONG. = 104.3314882°W</p> | | <p>COMPUTED</p> | | |
| <p>COMPUTED</p> <p>SW CORNER SEC. 13 LAT. = 32.7404736°N LONG. = 104.3433724°W</p> | | <p>COMPUTED</p> <p>SE CORNER SEC. 13 LAT. = 32.7404376°N LONG. = 104.3261612°W</p> | | |
| <p>S89°51'28"E 2646.72 FT</p> <p>S89°51'28"E 2646.72 FT</p> <p>S00°17'41"E 2650.54 FT</p> <p>S00°17'41"E 2650.54 FT</p> <p>NOO°40'50"E 2682.56 FT</p> <p>NOO°40'50"E 2682.56 FT</p> | | | | <p>¹⁸ SURVEYOR CERTIFICATION I hereby certify that the well location shown on this plat was plotted from field notes of actual surveys made by me or under my supervision, and that the same is true and correct to the best of my belief.</p> <p>JUNE 20, 2012 Date of Survey</p> <p><i>[Signature]</i> Signature and Seal of Professional Surveyor Certificate Number: FILIMON E. JARAMILLO, PLS 12797 SURVEY NO 1152</p> |

SECTION 13, TOWNSHIP 18 SOUTH, RANGE 26 EAST, N.M.P.M.
EDDY COUNTY, STATE OF NEW MEXICO

NOTE: THE LATITUDE AND LONGITUDE COORDINATES ARE SHOWN
USING THE NORTH AMERICAN DATUM OF 1927 (NAD27), AND ARE IN
DECIMAL DEGREE FORMAT.



0 10 50 100 200

SCALE 1" = 100'

DIRECTIONS TO LOCATION

FROM PAVED CR. #44 (FANNING) AND PAVED CR. #43 (THISTLE) GO
EAST ON CR. #43 0.25 MILES, TURN LEFT ON RIVER ROCK ROAD AND
GO NORTH 0.24 MILES, TURN RIGHT AND GO EAST 0.56 MILES TO
THE EXIST. ASAU #153 WELL AND FROM THIS WELL LOCATION IS 740'
EAST.

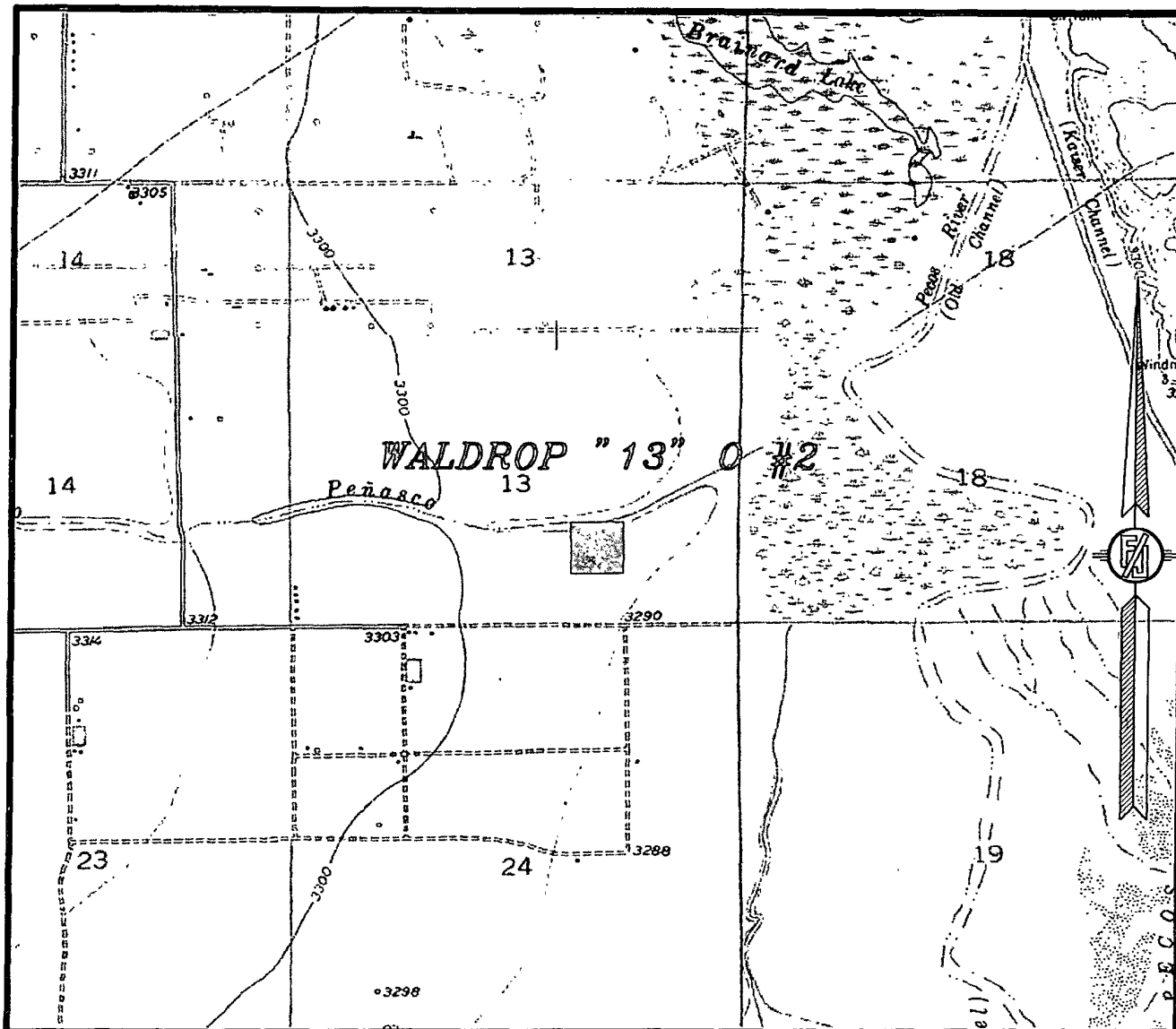
LIME ROCK RESOURCES II-A, L.P.
WALDROP "13" 0 #2
LOCATED 990 FT. FROM THE SOUTH LINE
AND 1650 FT. FROM THE EAST LINE OF
SECTION 13, TOWNSHIP 18 SOUTH,
RANGE 26 EAST, N.M.P.M.
EDDY COUNTY, STATE OF NEW MEXICO

JUNE 20, 2012

SURVEY NO. 1152

MADRON SURVEYING, INC. 301 SOUTH CANAL CARLSBAD, NEW MEXICO
(575) 234-3341

SECTION 13, TOWNSHIP 18 SOUTH, RANGE 26 EAST, N.M.P.M.
 EDDY COUNTY, STATE OF NEW MEXICO
 LOCATION VERIFICATION MAP



USGS QUAD MAP:
 SPRING LAKE
 LAKE McMILLAN NORTH

NOT TO SCALE

LIME ROCK RESOURCES II-A, L.P.

WALDROP "13" 0 #2

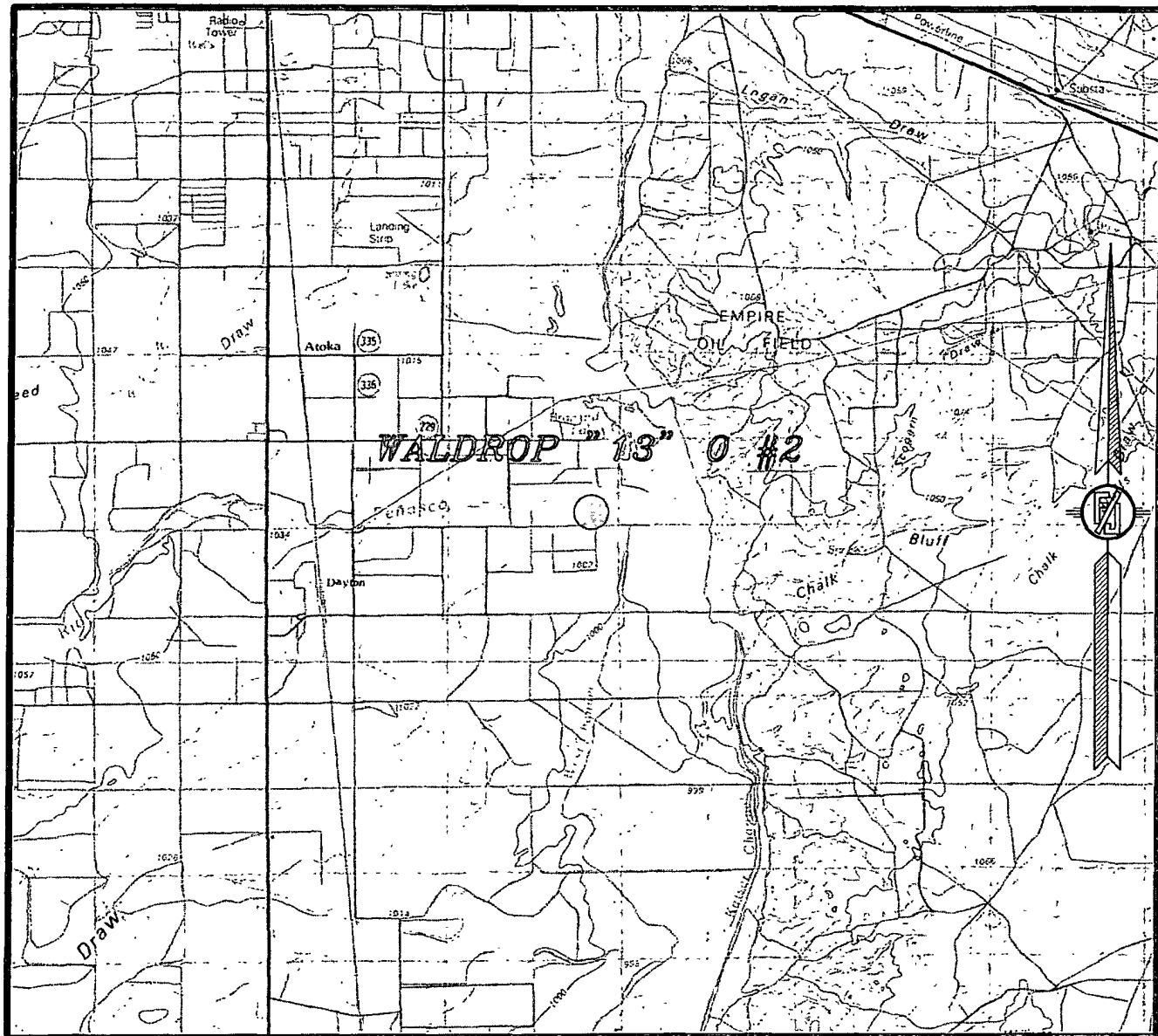
LOCATED 990 FT. FROM THE SOUTH LINE
 AND 1650 FT. FROM THE EAST LINE OF
 SECTION 13, TOWNSHIP 18 SOUTH,
 RANGE 26 EAST, N.M.P.M.
 EDDY COUNTY, STATE OF NEW MEXICO

JUNE 20, 2012

SURVEY NO. 1152

MADRON SURVEYING, INC. 301 SOUTH CANAL, CARLSBAD, NEW MEXICO
 (575) 234-3341

SECTION 13, TOWNSHIP 18 SOUTH, RANGE 26 EAST, N.M.P.M.
 EDDY COUNTY, STATE OF NEW MEXICO
 VICINITY MAP



NOT TO SCALE

LIME ROCK RESOURCES II-A, L.P.
 WALDROP "13" 0 #2

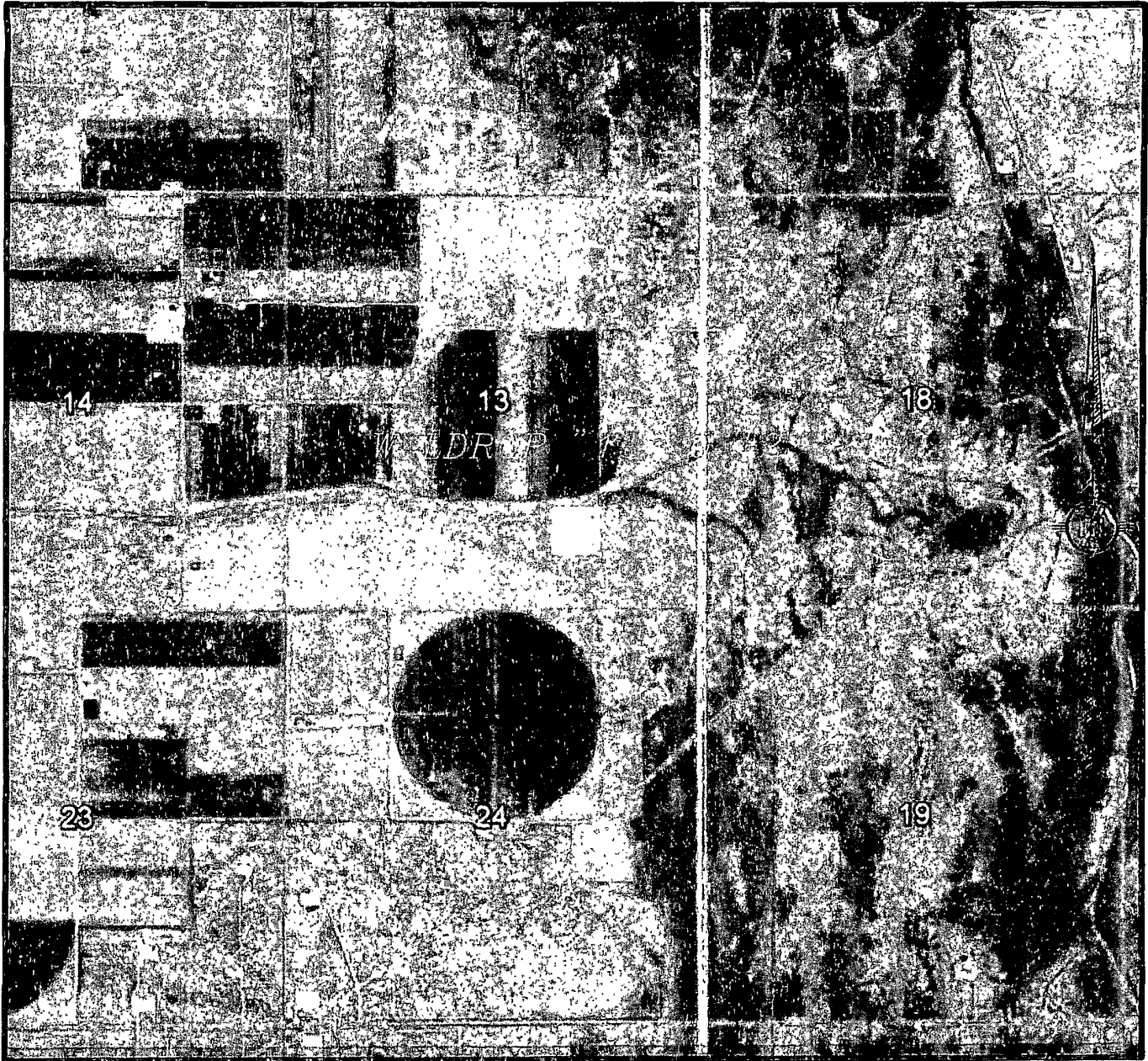
LOCATED 990 FT. FROM THE SOUTH LINE
 AND 1650 FT. FROM THE EAST LINE OF
 SECTION 13, TOWNSHIP 18 SOUTH,
 RANGE 26 EAST, N.M.P.M.
 EDDY COUNTY, STATE OF NEW MEXICO

JUNE 20, 2012

SURVEY NO. 1152

MADRON SURVEYING, INC. 301 SOUTH CANAL CARLSBAD, NEW MEXICO
 (575) 234-3341

SECTION 13, TOWNSHIP 18 SOUTH, RANGE 26 EAST, N.M.P.M.
EDDY COUNTY, STATE OF NEW MEXICO
AERIAL PHOTO



NOT TO SCALE
AERIAL PHOTO:
GOOGLE EARTH
JUNE 2011

LIME ROCK RESOURCES II-A, L.P.
WALDROP "13" 0 #2

LOCATED 990 FT. FROM THE SOUTH LINE
AND 1650 FT. FROM THE EAST LINE OF
SECTION 13, TOWNSHIP 18 SOUTH,
RANGE 26 EAST, N.M.P.M.
EDDY COUNTY, STATE OF NEW MEXICO

JUNE 20, 2012

SURVEY NO. 1152

MADRON SURVEYING, INC. 301 SOUTH CANAL CARLSBAD, NEW MEXICO
(575) 234-3341

**Lime Rock Resources II-A, L.P.
Drilling Plan**

**Waldrop 13 O #2
990' FSL 1650' FEL
O-S13-T18S-R26E
Eddy County, NM**

1. The elevation of the unprepared ground is 3294.2' feet above sea level.
2. The geologic name of the surface formation is Quaternary – Alluvium.
3. A rotary rig will be utilized to the well to 4700' and run casing. This equipment will be rigged down and the well will be completed with a workover rig.
4. Proposed total depth is 4700'.
5. Estimated tops of geologic markers:

| Quaternary – Alluvium | Surface |
|-----------------------|---------|
| Queen | 411 |
| Grayburg | 854 |
| San Andres | 1149 |
| Glorieta | 2548 |
| Yeso | 2738 |
| Tubb | 4148 |
| | |
| | |
| | |
| TD | 4700' |

6. Estimated depths at which anticipated oil, gas, or other mineral bearing formations are expected to be encountered:

| | |
|------------|-------|
| Queen | 411 |
| Grayburg | 854 |
| San Andres | 1149 |
| Glorieta | 2548 |
| Yeso | 2738 |
| Tubb | 4148 |
| | |
| | |
| | |
| TD | 4700' |

7. Proposed Casing and Cement program is as follows:

| Type | Hole Size | Casing Size | Wt | Grade | Thread | Depth | Sx | Density | Yield | Components |
|------------|-----------|-------------|------|-------|--------|-------|-----|---------|-------|--|
| Conductor | 26" | 20" | 91.5 | B | Welded | 40 | | | | Ready Mix |
| | | | | | | | | | | |
| Surface | 12-1/4" | 8-5/8" | 24 | J-55 | ST&C | 425 | 300 | 14.8 | 1.35 | Cl C Cmt + 0.25 lbs/sk Cello Flake + 2% CaCl2 |
| | | | | | | | | | | |
| Production | 7-7/8" | 5-1/2" | 17 | J-55 | LT&C | 4700 | 200 | 12.8 | 1.903 | 35:65 Poz/Cl H w/ 6% Gel, 0.125 lbs/sk Cello Flake, 5 pps LCM-1 and retarder |
| | | | | | | | 675 | 14.8 | 1.33 | Cl H w/ 0.6% R-3, 0.125% Cello Flake, 2% Gel |

8. Proposed Mud Program is as follows

| | | | |
|-------------------|-----------------|---|---|
| Depth | 0-40 | 40-4400 | 4400-4700 |
| Mud Type | Fresh Water Mud | Brine | Brine, Salt Gel, & Starch |
| Properties | | | |
| MW | 8.5-9.2 | 9.8-10-1 | 9.9-10.2 |
| pH | 10 | 10-11.5 | 11/12/2012 |
| WL | NC | NC | 20-30 |
| Vis | 28-34 | 29-32 | 32-35 |
| MC | NC | NC | <2 |
| Solids | NC | <1 | <3 |
| Pump Rate | 300-350 | 375-425 | 400-450 |
| Special | | Use Poymers sticks and MF-55 Hi-Vis Sweeps as necessary | Hi Vis Sweeps, add acid and starch as req. Raise Vis to 35 for log. |

9. Pressure Control Equipment: See Attached Description and diagram of Pressure Control Equipment.**10. Testing, Logging and Coring Program**

Testing Program: No drill stem tests are anticipated

Electric Logging Program: SGR-DLL-CDL-CNL Quad Combo from 4700 to surf. Csg. SGR-CNL to Surf.

Coring Program: No full or sidewall cores are anticipated.

11. Potential Hazards:

No abnormal temperatures or pressures are expected. There is no known presence of H₂S in this area. If H₂S is encountered the operator will comply with the provisions of Onshore Oil and Gas Order No. 6. All personnel will be familiar with all aspects of safe operation of equipment being used to drill this well. Estimated BHP 2068 psi based on 0.44 x TD. The estimated BHT is 125 degrees F.

12. Duration of Operations:

Anticipated spud date will be soon after approval and as soon as a rig will be available. Move in operations and drilling is expected to take 10 days. An additional 14 days will be needed it complete the well and to construct surface facilities.

Pressure Control Equipment

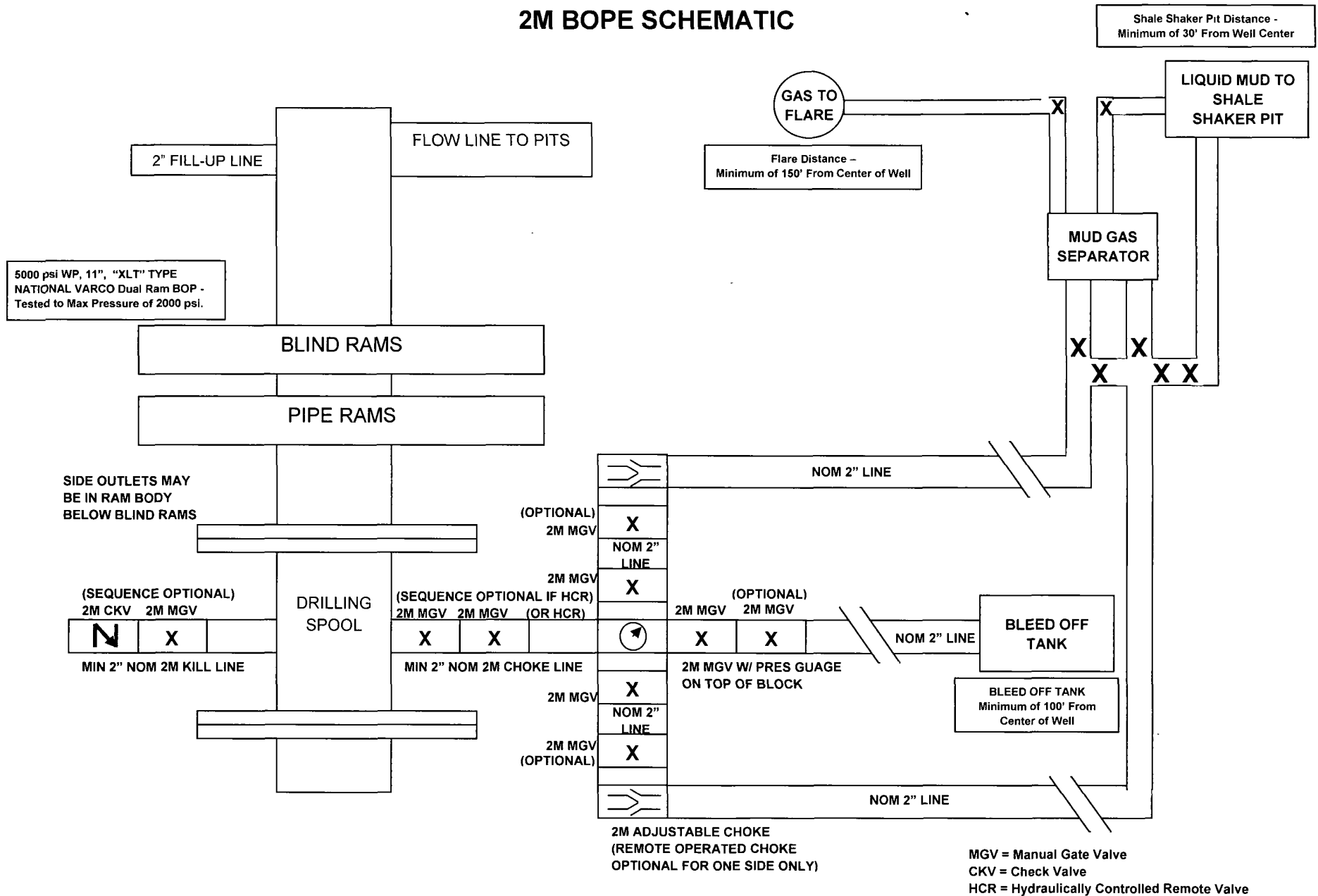
The blowout preventer equipment (BOP) will consist of a 5000 psi rated, 11", "XLT" type, National VARCO double ram preventer that will be tested to a maximum pressure of 2000 psi. The unit will be hydraulically operated and the ram type preventer will be equipped with blind rams on top and drill pipe rams on bottom. The 2M BOP will be installed on the 8 5/8" surface casing and utilized continuously until total depth is reached. All casing strings will be tested as per Onshore Order #2. This also includes a thirty day (30) test, should the rig still be operating on the same well in thirty days.

Pipe rams will be operated and checked each 24 hour period and each time the drill pipe is out of the hole. These functional tests will be documented on the daily drilling logs.

The BOP equipment will consist of the following:

- Double ram with blind rams (top) and pipe rams (bottom),
- Drilling spool, or blowout preventer with 2 side outlets (choke side shall be a 2" minimum diameter, kill side will be at least 2 inch diameter),
- Kill line (2 inch minimum),
- A minimum of 2 choke line valves (2 inch minimum),
- 2 inch diameter choke line,
- 2 kill valves, one of which will be a check valve (2 inch minimum),
- 2 chokes, one of which will be capable of remote operation,
- Pressure gauge on choke manifold,
- Upper Kelly cock valve with handle available,
- Safety valve and subs to fit all drill string connections in use,
- All BOPE connections subjected to well pressure will be flanged, welded, or clamped.
- A Fill-up line above the uppermost preventer.

2M BOPE SCHEMATIC



NOTE: All lines, valves and chokes are shown at the minimum size allowed, but may be larger.

Lime Rock Resources II-A, L.P.

Waldrop 13 O #2

HYDROGEN SULFIDE (H₂S) CONTINGENCY DRILLING PLAN

Assumed 100 ppm ROE = 3000'

100 ppm H₂S concentration shall trigger activation of this plan.

This is an open drilling site. H₂S monitoring equipment and emergency response equipment will be rigged up and in use when the company drills out from under surface casing. H₂S monitors, warning signs, wind indicators and flags will be in use.

EMERGENCY PROCEDURES

Escape

Crews shall escape upwind of escaping gas in the event of an emergency release of gas, or if monitors indicate H₂S is present. Escape will take place via the entry road away from the flare stack, or a foot path marked and designated before the well is spud by on site personnel. Once crews and other personnel are a safe distance, the crews will move to evacuate any persons in the Radius of Exposure, followed by blocking access to the Radius of Exposure.

There are no homes or buildings within the Radius of Exposure ("ROE"), so efforts will be concentrated on evacuating any third parties within the ROE. Immediate response will include evacuation of any persons potentially affected by toxic or flammable gasses. Once evacuation is under way, perimeter monitoring and control of access will be executed to ensure safe areas and stage areas.

In the event of a release of gas containing H₂S, the first responder(s) must

- Isolate the area and prevent entry by other persons into the 100 ppm ROE.
- Evacuate any public places encompassed by the 100 ppm ROE.
- Be equipped with H₂S monitors and air packs in order to control the release.
- Use the "buddy system" to ensure no injuries occur during the response
- Take precautions to avoid personal injury during this operation.
- Contact operator and/or local officials to aid in operation. See list of phone numbers attached.
- Have received training in the
 - Detection of H₂S, and
 - Measures for protection against the gas,
 - Equipment used for protection and emergency response.

H2S CONTINGENCY DRILLING PLAN EMERGENCY CONTACTS

Ignition of Gas Source

Should control of the well be considered lost and ignition considered, take care to protect against exposure to Sulfur Dioxide (SO₂). Intentional ignition must be coordinated with the NMOCD and local officials. Additionally the NM State Police may become involved. NM State Police shall be the Incident Command on scene of any major release. Take care to protect downwind whenever this is an ignition of the gas.

Characteristics of H₂S and SO₂

| Common Name | Chemical Formula | Specific Gravity | Threshold Limit | Hazardous Limit | Lethal Concentration |
|------------------|------------------|------------------|-----------------|-----------------|----------------------|
| Hydrogen Sulfide | H ₂ S | 1.189 Air= 1 | 10 ppm | 100 ppm/hr | 600 ppm |
| Sulfur Dioxide | SO ₂ | 2.21 Air= 1 | 2ppm | N/A | 1000 ppm |

Contacting Authorities

Lime Rock Resources personnel must liaison with local and state agencies to ensure a proper response to a major release. Additionally, the OCD must be notified of the release as soon as possible but no later than 4 hours. Agencies will ask for information such as type and volume of release, wind direction, location of release, etc. Be prepared with all information available including directions to site. The following call list of essential and potential responders has been prepared for use during a release. Lime Rock Resources response must be in coordination with the State of New Mexico's "Hazardous Materials Emergency Response Plan" (HMER) and BLM Onshore Order #6.

H₂S Operations

Though no H₂S is anticipated during the drilling operation, this contingency plan will provide for methods to ensure the well is kept under control in the event an H₂S reading of 100 ppm or more are encountered. Once personnel are safe and the proper protective gear is in place and on personnel, the operator and rig crew essential personnel will ensure the well is under control, suspend drilling operations and shut-in the well (unless pressure build up or other operational situations dictate suspending operations will prevent well control), increase the mud weight and circulate all gas from the hole utilizing the mud/gas separator downstream of the choke, the choke manifold and the emergency flare system located 150' from the well. Bring the mud system into compliance and the H₂S level below 10 ppm, then notify all emergency officers that drilling ahead is practical and safe.

Proceed with drilling ahead only after all provisions of Onshore Order 6, Section III.C. have been satisfied.

H2S CONTINGENCY DRILLING PLAN EMERGENCY CONTACTS

| | | |
|---------------------------------|---|--|
| <u>Company Offices -</u> | Lime Rock Houston Office Answering Service(After Hours) Artesia, NM Office Roswell, NM | 713-292-9510 713-292-9555 575-748-9724 575-623-8424 |
|---------------------------------|---|--|

| KEY PERSONNEL | | | | | |
|-----------------|---------------------------------|-----------------|--------------|--------------|--------------|
| Name | Title | Location | Office # | Cell # | Home # |
| SID ASHWORTH | PRODUCTION ENGINEER | HOUSTON | 713-292-9526 | 713-906-7750 | 713-783-1959 |
| JERRY SMITH | ASSISTANT PRODUCTION SUPERVISOR | ARTESIA | 575-748-9724 | 505-918-0556 | 575-746-2478 |
| MICHAEL BARRETT | PRODUCTION SUPERVISOR | ROSWELL | 575-623-8424 | 505-353-2644 | 575-623-4707 |
| GARY FATHEREE | WELL SITE SUPERVISOR | ROTATES ON SITE | NA | 940-389-6044 | NA |
| GARY MCCCELLAND | WELL SITE SUPERVISOR | ROTATES ON SITE | NA | 903-503-8997 | NA |

| Agency Call List | | |
|------------------|---|------------------|
| City | Agency or Office | Telephone Number |
| Artesia | Ambulance | 911 |
| Artesia | State Police | 575-746-2703 |
| Artesia | Sheriff's Office | 575-746-9888 |
| Artesia | City Police | 575-746-2703 |
| Artesia | Fire Department | 575-746-2701 |
| Artesia | Local Emergency Planning Committee | 575-746-2122 |
| Artesia | New Mexico OCD District II | 575-748-1283 |
| Carlsbad | Ambulance | 911 |
| Carlsbad | State Police | 575-885-3137 |
| Carlsbad | Sheriff's Office | 575-887-7551 |
| Carlsbad | City Police | 575-885-2111 |
| Carlsbad | Fire Department | 575-885-2111 |
| Carlsbad | Local Emergency Planning Committee | 575-887-3798 |
| Carlsbad | US DOI Bureau of Land Management | 575-887-6544 |
| State Wide | New Mexico Emergency Response Commission ("NMERC") | 505-476-9600 |
| State Wide | NMERC 24 hour Number | 505-827-9126 |
| State Wide | New Mexico State Emergency Operations Center | 505-476-9635 |
| National | National Emergency Response Center (Washington, D.C.) | 800-424-8802 |

H2S CONTINGENCY DRILLING PLAN EMERGENCY CONTACTS

| Emergency Services | | | | |
|--|---------------------------------|---------------------------|------------------|---------------------|
| Name | Service | Location | Telephone Number | Alternate Number |
| Boots & Coots International Well Control | Well Control | Houston / Odessa | 1-800-256-9688 | 281-931-8884 |
| Cudd Pressure Control | Well Control & Pumping | Odessa | 915-699-0139 | 915-563-3356 |
| Baker Hughes Inc. | Pumping Service | Artesia, Hobbs and Odessa | 575-746-2757 | SAME |
| Total Safety | Safety Equipment and Personnel | Artesia | 575-746-2847 | SAME |
| Cutter Oilfield Services | Drilling Systems Equipment | Midland | 432-488-6707 | SAME |
| Assurance Fire & Safety | Safety Equipment and Personnel | Artesia | 575-396-9702 | 575-441-2224 |
| Flight for Life | Emergency Helicopter Evacuation | Lubbock | 806-743-9911 | SAME |
| Aerocare | Emergency Helicopter Evacuation | Lubbock | 806-747-8923 | SAME |
| Med Flight Air Ambulance | Emergency Helicopter Evacuation | Albuquerque | 505-842-4433 | SAME |
| Artesia General Hospital | Emergency Medical Care | Artesia | 575-748-3333 | 702 North 13 Street |