

District I
1625 N French Dr., Hobbs, NM 88240
District II
1301 W. Grand Avenue, Artesia, NM 88210
District III
1000 Rio Brazos Rd, Aztec, NM 87410
District IV
1220 S St. Francis Dr., Santa Fe, NM 87505

State of New Mexico
Energy, Minerals & Natural Resources Department
OIL CONSERVATION DIVISION
1220 South St. Francis Dr.
Santa Fe, NM 87505

RECEIVED

SEP 06 2012

NMOC DISTRICT OFFICE

Form C-102

Revised October 12, 2005

Submit to Appropriate District Office

State Lease- 4 Copies

Fee Lease- 3 Copies

☒ AMENDED REPORT

As Drilled

WELL LOCATION AND ACREAGE DEDICATION PLAT

API Number 30-015- 39506	Pool Code 60660	Pool Name Turkey Track; Bone Spring
Property Code 33352	Property Name PARKWAY "23" STATE COM	Well Number 6H
OGRID No. 7377	Operator Name EOG RESOURCES, INC.	Elevation 3310 1'

Surface Location

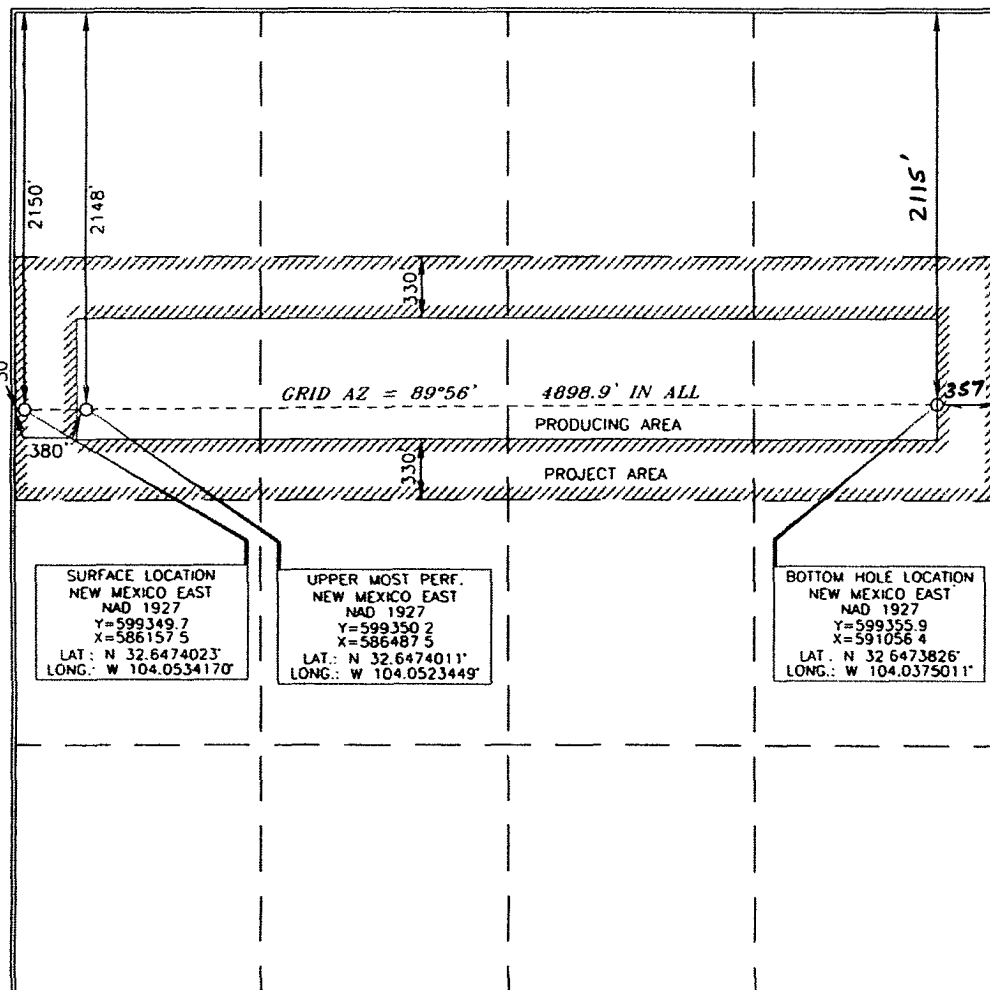
UL or lot no.	Section	Township	Range	Lot Idn	Feet from the	North/South line	Feet from the	East/West line	County
E	23	19 SOUTH	29 EAST, N.M.P.M.		2150'	NORTH	50'	WEST	EDDY

Bottom Hole Location If Different From Surface

UL or lot no.	Section	Township	Range	Lot Idn	Feet from the	North/South line	Feet from the	East/West line	County
H	23	19 SOUTH	29 EAST, N.M.P.M.		2115	NORTH	357	EAST	EDDY

Dedicated Acres 160	Joint or Infill	Consolidation Code	Order No.
------------------------	-----------------	--------------------	-----------

No allowable will be assigned to this completion until all interests have been consolidated or a non-standard unit has been approved by the division.



OPERATOR CERTIFICATION

I hereby certify that the information contained herein is true and complete to the best of my knowledge and belief, and that this organization either owns a working interest or unleased mineral interest in the land including the proposed bottom hole location or has a right to drill this well at this location pursuant to a contract with an owner of such a mineral or working interest, or to a voluntary pooling agreement or a compulsory pooling order heretofore entered by the division.

Stan Wagner 7/18/11
Signature Date

Stan Wagner
Printed Name

SURVEYOR CERTIFICATION

I hereby certify that the well location shown on this plat was plotted from field notes or actual survey made by me or under my supervision and that the same is true and correct to the best of my belief.

Date of Survey

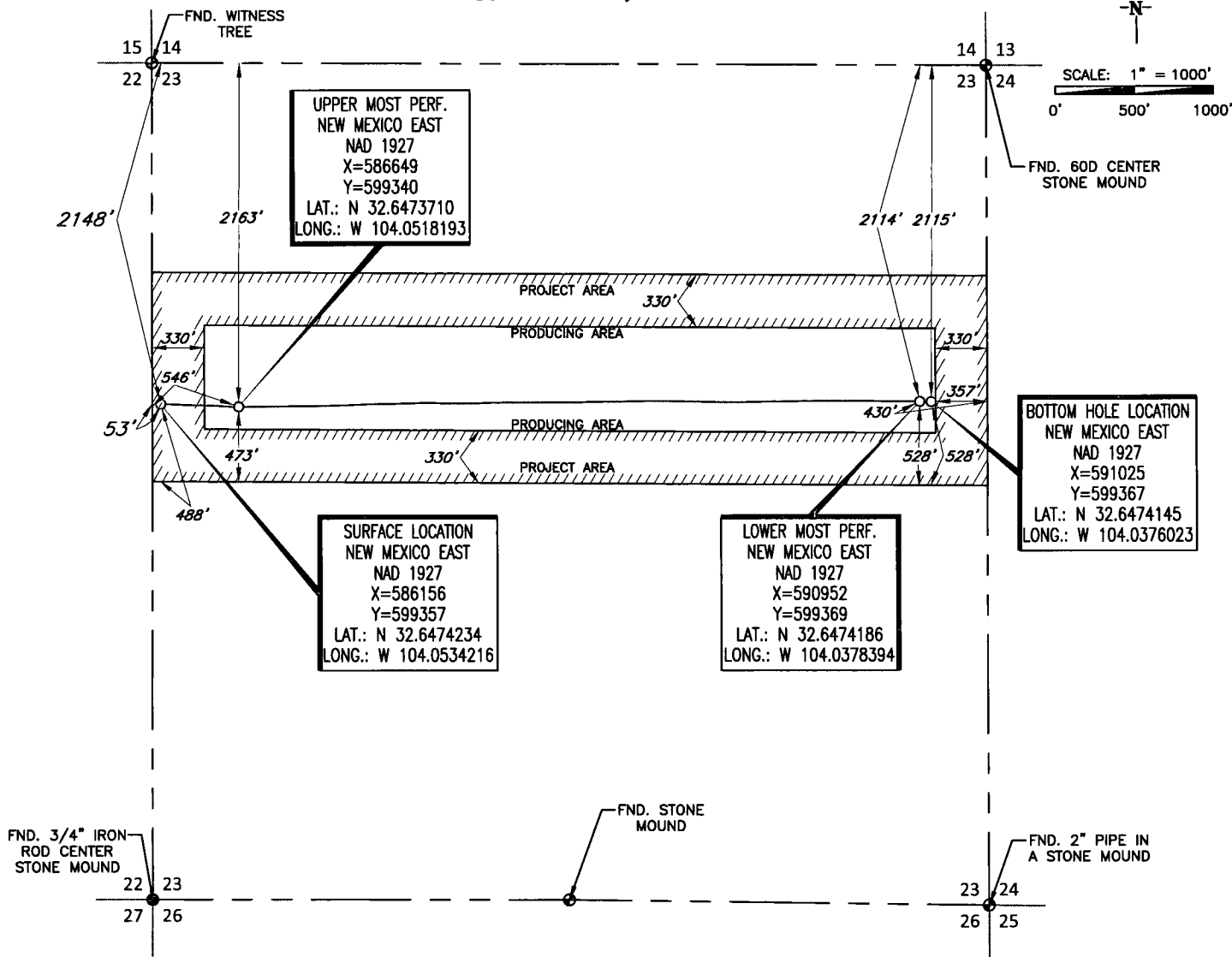
Signature of Seal of Professional Surveyor

Terry J. Abel 6/9/2011
Certificate Number 15079

WO# 110523WL-b (KA)



SECTION 23, TOWNSHIP 19 SOUTH, RANGE 29 EAST, N.M.P.M.
EDDY COUNTY, NEW MEXICO

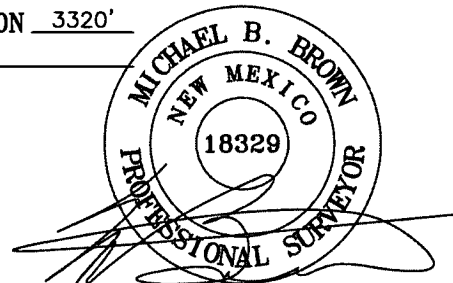


LEASE NAME & WELL NO.: PARKWAY 23 STATE COM #6H
SECTION 23 TWP 19-S RGE 29-E SURVEY N.M.P.M.
COUNTY EDDY STATE NM ELEVATION 3320'
DESCRIPTION 2148' FNL & 53' FWL

ALL BEARINGS, DISTANCES, AND COORDINATE VALUES CONTAINED HEREON ARE GRID BASED UPON THE NEW MEXICO STATE PLANE COORDINATE SYSTEM, EAST ZONE OF THE NORTH AMERICAN DATUM 1927, U.S. SURVEY FEET

THIS EASEMENT/SERVITUDE LOCATION SHOWN HEREON HAS BEEN SURVEYED ON THE GROUND UNDER MY SUPERVISION AND PREPARED ACCORDING TO THE EVIDENCE FOUND AT THE TIME OF SURVEY, AND DATA PROVIDED BY EOG RESOURCES, INC. THIS CERTIFICATION IS MADE AND LIMITED TO THOSE PERSONS OR ENTITIES SHOWN ON THE FACE OF THIS PLAT AND IS NON-TRANSFERABLE. THIS SURVEY IS CERTIFIED FOR THIS TRANSACTION ONLY

ORIGINAL DOCUMENT SIZE: 8.5" X 11"



Michael Blake Brown, P.S. No. 18329
AUGUST 8, 2012

TOPOGRAPHIC

SURVEYING • MAPPING • GIS • GPS
2903 NORTH BIG SPRING • MIDLAND, TEXAS 79705
TELEPHONE: (432) 682-1653 • FAX (432) 682-1743
1400 EVERMAN PARKWAY, Ste. 197 • FT. WORTH, TEXAS 76140
TELEPHONE: (817) 744-7512 • FAX (817) 744-7548
2225 PERRYTON PARKWAY • PAMPA, TEXAS 79065
TELEPHONE: (806) 665-7218 • FAX (806) 665-7210
WWW.TOPOGRAPHIC.COM

PARKWAY 23 STATE COM #6H AS-DRILLED	REVISION:	
	INT	DATE
DATE: AUGUST 8, 2012		
FILE: AD_PARKWAY23STATECOM_6H		
DRAWN BY: A.C.C.		
SHEET : 1 OF 1		