

State of New Mexico
Energy, Minerals & Natural Resources Department
OIL CONSERVATION DIVISION
1220 South St. Francis Dr.
Santa Fe, NM 87505

Form C-102
Revised October 12, 2005
Submit to Appropriate District Office
State Lease- 4 Copies
~~Fee Lease- 3 Copies~~

☒ AMENDED REPORT

As Drilled

WELL LOCATION AND ACREAGE DEDICATION PLAT

API Number	Pool Code	Pool Name
30-015-39831	33740	Jugle Wells Bone Spring
Property Code	Property Name	Well Number
304972	STERLING SILVER 33 Federal	1H
OGRID No.	Operator Name	Elevation
16696	OXY USA INC.	3419.3'

Surface Location

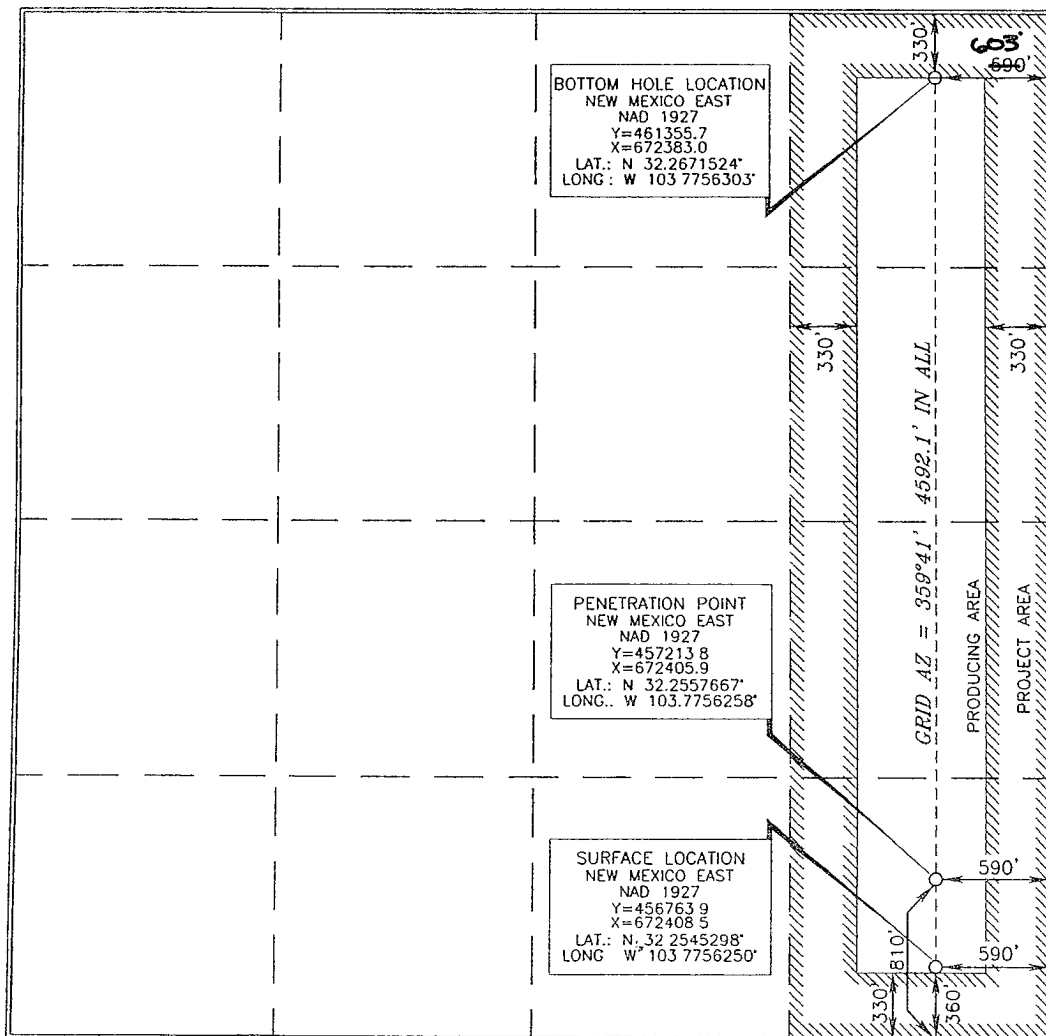
UL or lot no.	Section	Township	Range	Lot Idn	Feet from the	North/South line	Feet from the	East/West line	County
<i>P</i>	<i>33</i>	<i>23 SOUTH</i>	<i>31 EAST, N.M.P.M.</i>		<i>360'</i>	<i>SOUTH</i>	<i>590'</i>	<i>EAST</i>	<i>EDDY</i>

Bottom Hole Location If Different From Surface

UL or lot no	Section	Township	Range	Lot 1dn	Feet from the	North/South line	Feet from the	East/West line	County
A	33	23 SOUTH	31 EAST, N.M.P.M.		330'	NORTH	590' 590'	EAST	EDDY

Dedicated Acres	Joint or Infill	Consolidation Code	Order No.
160	N		

No allowable will be assigned to this completion until all interests have been consolidated or a non-standard unit has been approved by the division.



OPERATOR CERTIFICATION

I hereby certify that the information contained herein is true and complete to the best of my knowledge and belief, and that this organization either owns a working interest or unleased mineral interest in the land including the proposed bottom hole location or has a right to drill this well at this location pursuant to a contract with an owner of such a mineral or working interest, or to a voluntary pooling agreement or a compulsory pooling order heretofore entered by the division.

Signature _____ Date 9/9/11

David Stewart
Printed Name

SURVEYOR CERTIFICATION

I hereby certify that the well location shown on this plat was plotted from field notes of actual surveys made by me or under my supervision, and that the same is true and correct to the best of my belief.

15079
DECEMBER 30, 2010
Date of Survey

Signature and Seal of
Professional Surveyor:
Termy J. Abel 4/5/2011
Certificate Number 15079

WO# 101230WL-a (KA)