

DISTRICT I
1625 N. French Dr., Hobbs, NM 88240

DISTRICT II
1301 W. Grand Avenue, Artesia, NM 88210

DISTRICT III
1000 Rio Brazos Rd., Aztec, NM 87410

DISTRICT IV
1220 S. St. Francis Dr., Santa Fe, NM 87505

State of New Mexico
Energy, Minerals and Natural Resources Department

OIL CONSERVATION DIVISION
1220 South St. Francis Dr.
Santa Fe, New Mexico 87505

RECEIVED

SEP 20 2012

Form C-102
Revised October 12, 2005

Submit to appropriate District Office
State Lease - 4 Copies
Fee Lease - 3 Copies

WELL LOCATION AND ACREAGE DEDICATION PLAT

☒ AMENDED REPORT

API Number 30-015-37606	Pool Code 37878 816.00	Pool Name Nash Draw;Morrow (Gas)
Property Code 37878	Property Name LONGVIEW "6" Deep Federal	Well Number 41
GRID No. 246289	Operator Name RKI EXPLORATION & PRODUCTION LLC	Elevation 3041'

Surface Location

UL or lot No.	Section	Township	Range	Lot Idn	Feet from the	North/South line	Feet from the	East/West line	County
LOT 7	6	23 S	29 E		1140	SOUTH	840	WEST	EDDY

Bottom Hole Location If Different From Surface

UL or lot No.	Section	Township	Range	Lot Idn	Feet from the	North/South line	Feet from the	East/West line	County
Dedicated Acres	Joint or Infill	Consolidation Code	Order No.						

NO ALLOWABLE WILL BE ASSIGNED TO THIS COMPLETION UNTIL ALL INTERESTS HAVE BEEN CONSOLIDATED
OR A NON-STANDARD UNIT HAS BEEN APPROVED BY THE DIVISION

LOT 4	LOT 3	LOT 2	LOT 1
LOT 5			
LOT 6			

3040.0' 3040.5'

840'

3040.0' 3033.1'

1140'

SURFACE LOCATION
Lat - N 32°19'49.97"
Long - W 104°01'45.38"
NAD83- N 484118.6
E 635253.2
(NAD-83)

OPERATOR CERTIFICATION

I hereby certify that the information contained herein is true and complete to the best of my knowledge and belief, and that this organization either owns a working interest or unleased mineral interest in the land including the proposed bottom hole location pursuant to a contract with an owner of such a mineral or working interest, or to a voluntary pooling agreement or a compulsory pooling order heretofore entered by the division.

Charles K. Ahn 9-19-12
Signature Date

Charles K Ahn
Printed Name

SURVEYOR CERTIFICATION

I hereby certify that the well location shown on this plat was plotted from field notes of actual surveys made by me or under my supervision, and that the same is true and correct to the best of my belief.

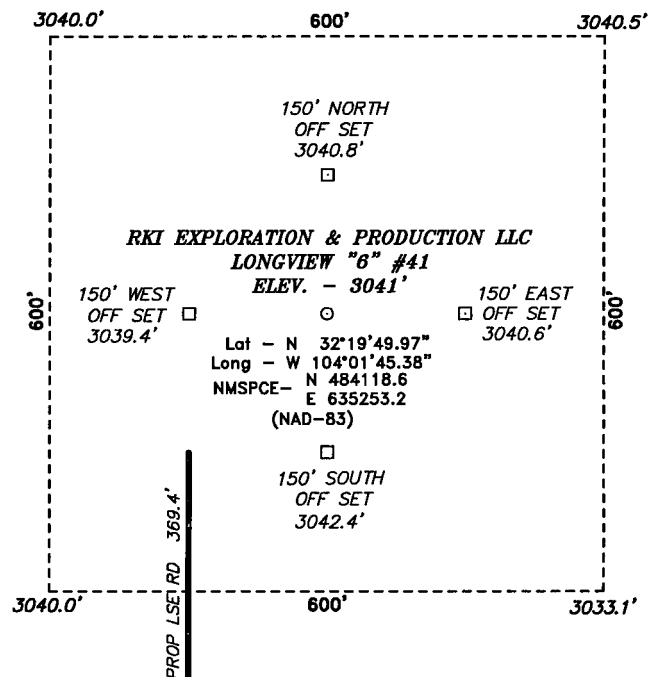
NOV 15 2012
Date Surveyed

[Signature]
Signature & Seal of Professional Surveyor

W. Jones
Certificate No. Gary L. Jones 7977

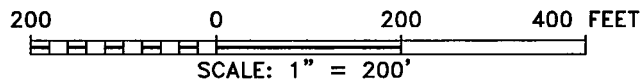
BASIN SURVEYS

SECTION 6, TOWNSHIP 23 SOUTH, RANGE 29 EAST, N.M.P.M.,
EDDY COUNTY, NEW MEXICO.



Directions to Location:

FROM HWY 31 AND REFINERY ROAD, GO NORTHWEST
0.4 MILES TO 2-TRACK AND PROPOSED LEASE ROAD.



RKI EXPLORATION & PRODUCTION LLC

REF: LONGVIEW "6" #41 / WELL PAD TOPO

THE LONGVIEW "6" #41 LOCATED 1140'
FROM THE SOUTH LINE AND 840' FROM THE WEST LINE OF
SECTION 6, TOWNSHIP 23 SOUTH, RANGE 29 EAST,
N.M.P.M., EDDY COUNTY, NEW MEXICO.

BASIN SURVEYS P.O. BOX 1786-HOBBS, NEW MEXICO

W.O. Number: 21948

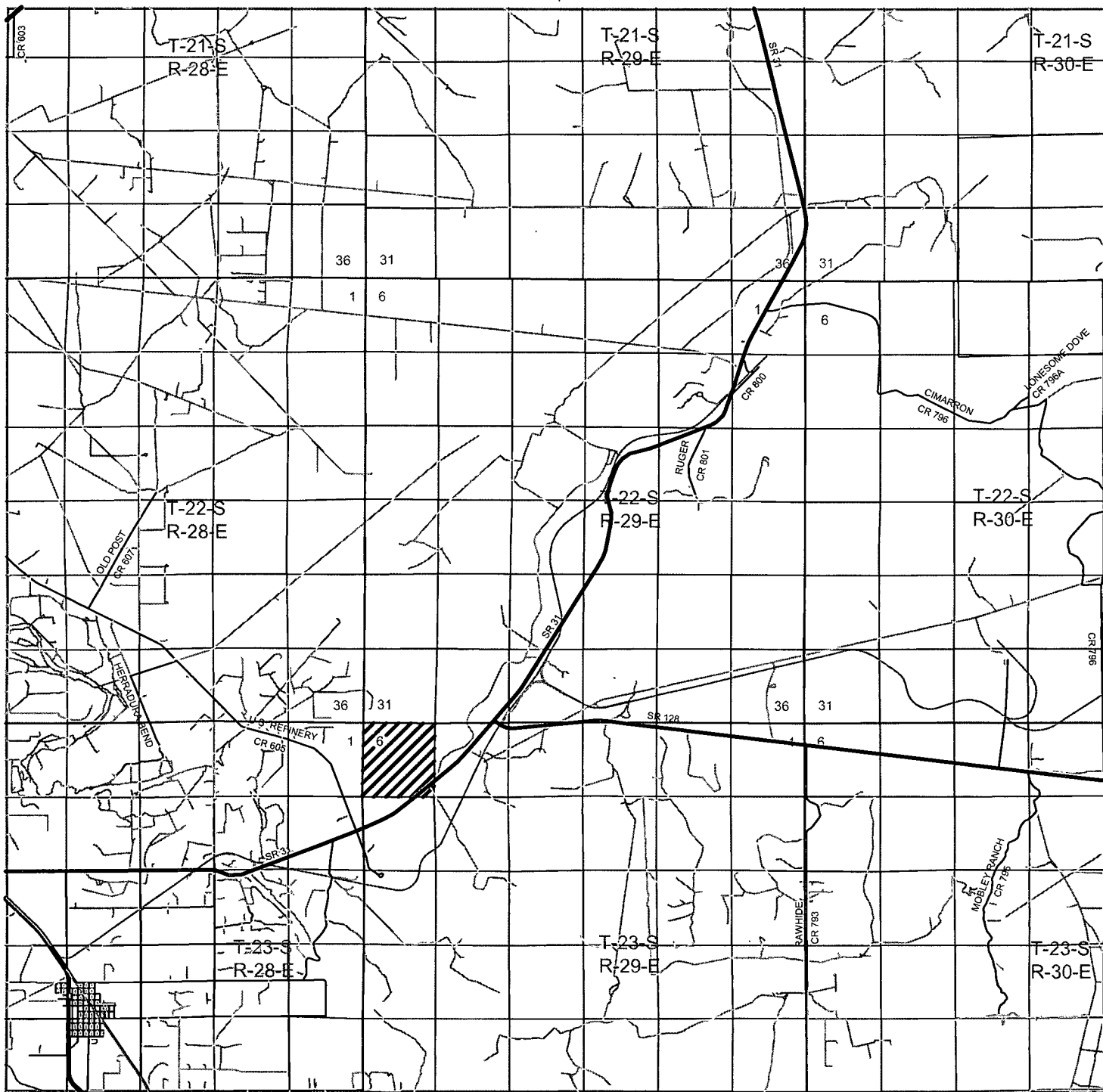
Drawn By: J. SMALL

Date: 11-17-2009

Disk: JMS 21948

Survey Date: 11-12-2009

Sheet 1 of 1 Sheets



LONGVIEW "6" #41

Located 1140' FSL and 840' FWL

Section 6, Township 23 South, Range 29 East,
N.M.P.M., Eddy County, New Mexico.

basin
surveys
focused on excellence
in the oilfield

P.O. Box 1786
1120 N. West County Rd.
Hobbs, New Mexico 88241
(575) 393-7316 - Office
(575) 392-2206 - Fax
basinsurveys.com

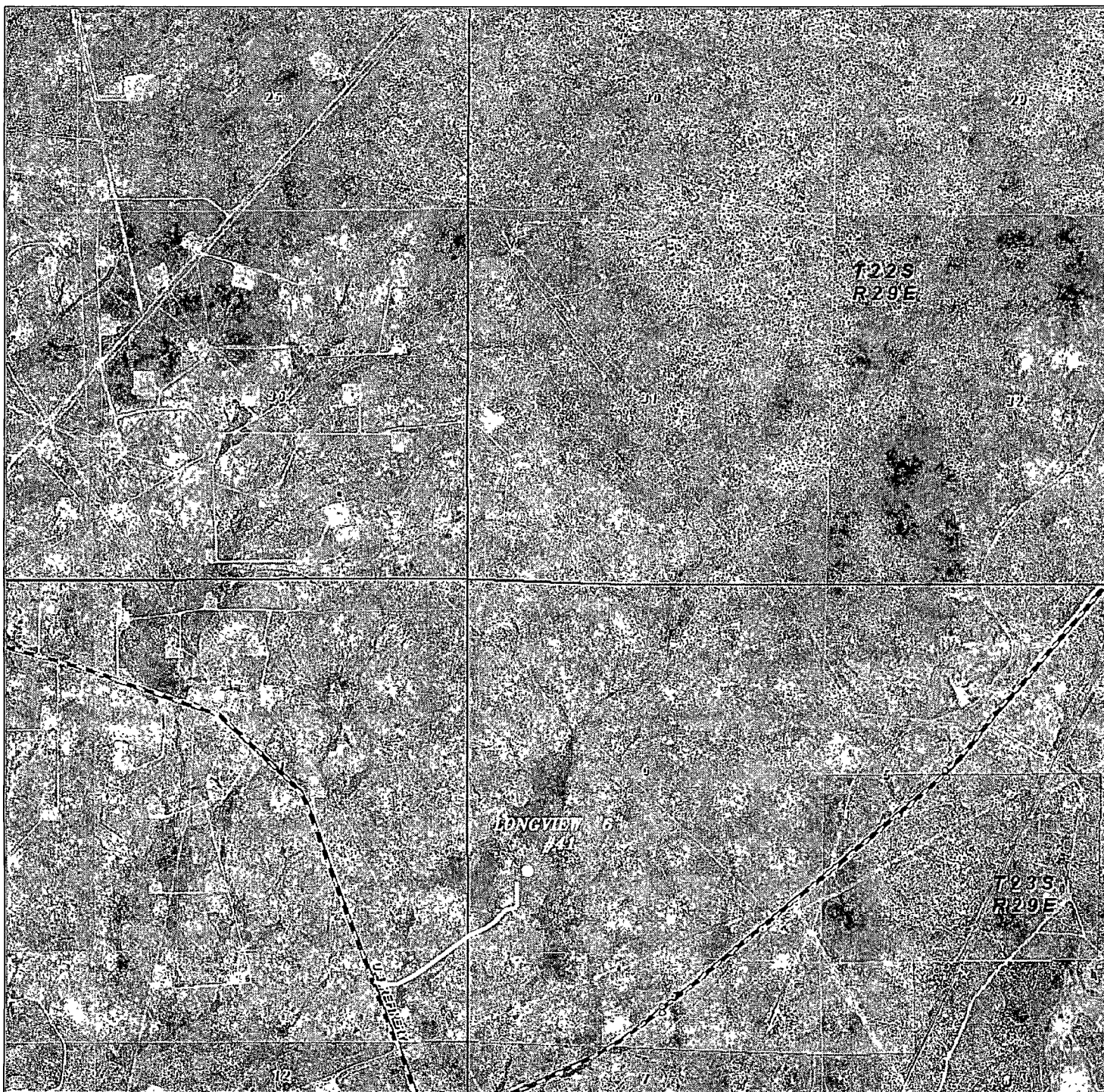
W.O. Number: JMS 21948

Survey Date: 11-12-2009

Scale: 1" = 2 Miles

Date: 11-17-2009

RKI EXPLORATION
& PRODUCTION
LLC



LONGVIEW "6" #41

Located 1140' FSL and 840' FWL

Section 6, Township 23 South, Range 29 East,
N.M.P.M., Eddy County, New Mexico.



P.O. Box 1786
1120 N. West County Rd.
Hobbs, New Mexico 88241
(575) 393-7316 - Office
(575) 392-2206 - Fax
basinsurveys.com

W.O. Number: JMS 21948

Scale: 1" = 2000'

YELLOW TINT - USA LAND
BLUE TINT - STATE LAND
NATURAL COLOR - FEE LAND

RKI EXPLORATION
& PRODUCTION
LLC