

Expires: February 28, 1995

DEPARTMENT OF THE INTERIOR
BUREAU OF LAND MANAGEMENT
1301 W. Grand Avenue
Altesia, NM 88210

APPLICATION FOR PERMIT TO DRILL OR DEEPEN

1. TYPE OF WORK
DRILL ☒ DEEPEN ☐

2. TYPE OF WELL
OIL WELL ☒ GAS WELL ☐ SECRETARY'S POTASH ☐ SINGLE ZONE ☒ MULTIPLE ZONE ☐

3. NAME OF OPERATOR
POGO PRODUCING COMPANY (RICHARD WRIGHT 432-685-8140)

4. ADDRESS AND TELEPHONE NO.
P.O. BOX 10340 MIDLAND, TEXAS 79702-7340 (432-685-8100)

5. LOCATION OF WELL (Report location clearly and in accordance with any State requirements.)
At surface 1980' FSL & 2130' FWL SECTION 18 T24S-R31E EDDY CO. NM
At proposed prod. zone SAME

6. LEASE DESIGNATION AND SERIAL NO.
NM-89819

7. IF INDIAN, ALLOTTEE OR TRIBE NAME

8. UNIT AGREEMENT NAME

9. FARM OR LEASE NAME, WELL NO.
PATTON "18" FEDERAL # 8

10. AM WELL NO.
30-05-34079

11. FIELD AND POOL, OR WILDCAT

12. SRC., T., R., M., OR BLK. AND SURVEY OR AREA
SECTION 18 T24S-R31E

13. COUNTY OR PARISH
EDDY CO.

14. STATE
NEW MEXICO

15. DISTANCE IN MILES AND DIRECTION FROM NEAREST TOWN OR POST OFFICE
Approximately 30 miles Southeast of Carlsbad New Mexico

16. DISTANCE FROM PROPOSED LOCATION TO NEAREST PROPERTY OR LEASE LINE, FT. (Also to nearest drig. unit line, if any)
1980'

17. NO. OF ACRES IN LEASE
640

18. DISTANCE FROM PROPOSED LOCATION TO NEAREST WELL, DRILLING COMPLETED, OR APPLIED FOR, ON THIS LEASE, FT.
1400'

19. PROPOSED DEPTH
8400'

20. NO. OF ACRES ASSIGNED TO THIS WELL
40

21. ROTARY OR CABLE TOOLS
ROTARY

22. APPROX. DATE WORK WILL START WHEN APPROVED

RECEIVED

APR 22 2005

OCD-ANTELOPE

PROPOSED CASING AND CEMENTING PROGRAM

SIZE OF HOLE	GRADE SIZE OF CASING	WEIGHT PER FOOT	SETTING DEPTH	QUANTITY OF CEMENT
25"	Conductor	NA	40"	Cement to surface W/Redi-mix.
17 1/2"	H-40 13 3/8"	48	915'	800 Sx. circulate cement
11"	J-55 8 5/8"	32 & 24	4200'	1200 Sx. " "
7 7/8"	J-55-N-80 4 1/2"	11.6	8400'	1300 Sx. 2 stage Est TOC 3500'

1. Drill 25" hole to 40'. Set 40' of 20" conductor pipe and cement to surface with Redi-mix.
2. Drill 17 1/2" hole to 915'. Run and set 915' of 13 3/8" 48# H-40 ST&C casing. Cement with 800 Sx. of Class "C" cement + 2% CaCl₂ + 1/4# Flocele/Sx., circulate cement.
3. Drill 11" hole to 4200'. Run and set 4200' of 8 5/8" casing as follows: 2000' of 8 5/8" 32# J-55 ST&C, 1200' of 8 5/8" 24# J-55 ST&C, 1000' of 8 5/8" 32# J-55 ST&C casing. Cement with 1200 Sx. of Class "C" cement + additives, circulate cement to surface.

CARLSBAD CONTROLLED WATER BASIN

4. Drill 7 7/8" hole to 8400'. Run and set 8400' of 4 1/2" casing as follows: 2400' of 4 1/2" 11.6# N-80 LT&C, 5000' of 4 1/2" 11.6# J-55 LT&C, 1000' of 4 1/2" 11.6# N-80 LT&C casing. Cement in 2 stages with DV Tool at 6200±'. Cement 1st stage with 550 Sx. of Class "H" Premium Plus cement + additives, cement 2nd stage with 750 Sx. of Class "C" cement + additives, Estimate top of cement 3500' from surface.

IN ABOVE SPACE DESCRIBE PROPOSED PROGRAM: If proposal is to deepen, give data on present productive zone and proposed new productive zone. If proposal is to drill or deepen directionally, give pertinent data on subsurface locations and measured and true vertical depths. Give blowout preventer program, if any.

24. SIGNED [Signature] TITLE Agent DATE 02/14/05

(This space for Federal or State office use)

PERMIT NO. _____ APPROVAL DATE _____

APPROVAL SUBJECT TO GENERAL REQUIREMENTS AND SPECIAL STIPULATIONS ATTACHED

Application approval does not warrant or certify that the applicant holds legal or equitable title to those rights in the subject lease which would entitle the applicant to conduct operations thereon.

CONDITIONS OF APPROVAL IF ANY: Salt, > 9.5

/s/ Linda S. C. Rundell

STATE DIRECTOR

APR 20 2004

APPROVED BY

TITLE

*See Instructions On Reverse Side

APPROVAL FOR 1 YEAR

Title 18 U.S.C. Section 1001, makes it a crime for any person knowingly and willfully to make to any department or agency of the United States any false, fictitious or fraudulent statements or representations as to any matter within its jurisdiction.

Submit to Appropriate District Office
State Lease - 4 Copies
Fee Lease - 3 Copies

OIL CONSERVATION DIVISION

2040 South Pacheco
Santa Fe, New Mexico 87504-2088

☐ AMENDED REPORT

WELL LOCATION AND ACREAGE DEDICATION PLAT

API Number		Pool Code	Pool Name
		55010	
Property Code	Property Name		Well Number
	PATTON "18" FEDERAL		8
OGRID No.	Operator Name		Elevation
17891	POGO PRODUCING COMPANY		3521'

Surface Location

UL or lot No.	Section	Township	Range	Lot Idn	Feet from the	North/South line	Feet from the	East/West line	County
K	18	24 S	31 E		1980	SOUTH	2130	WEST	EDDY

Bottom Hole Location If Different From Surface

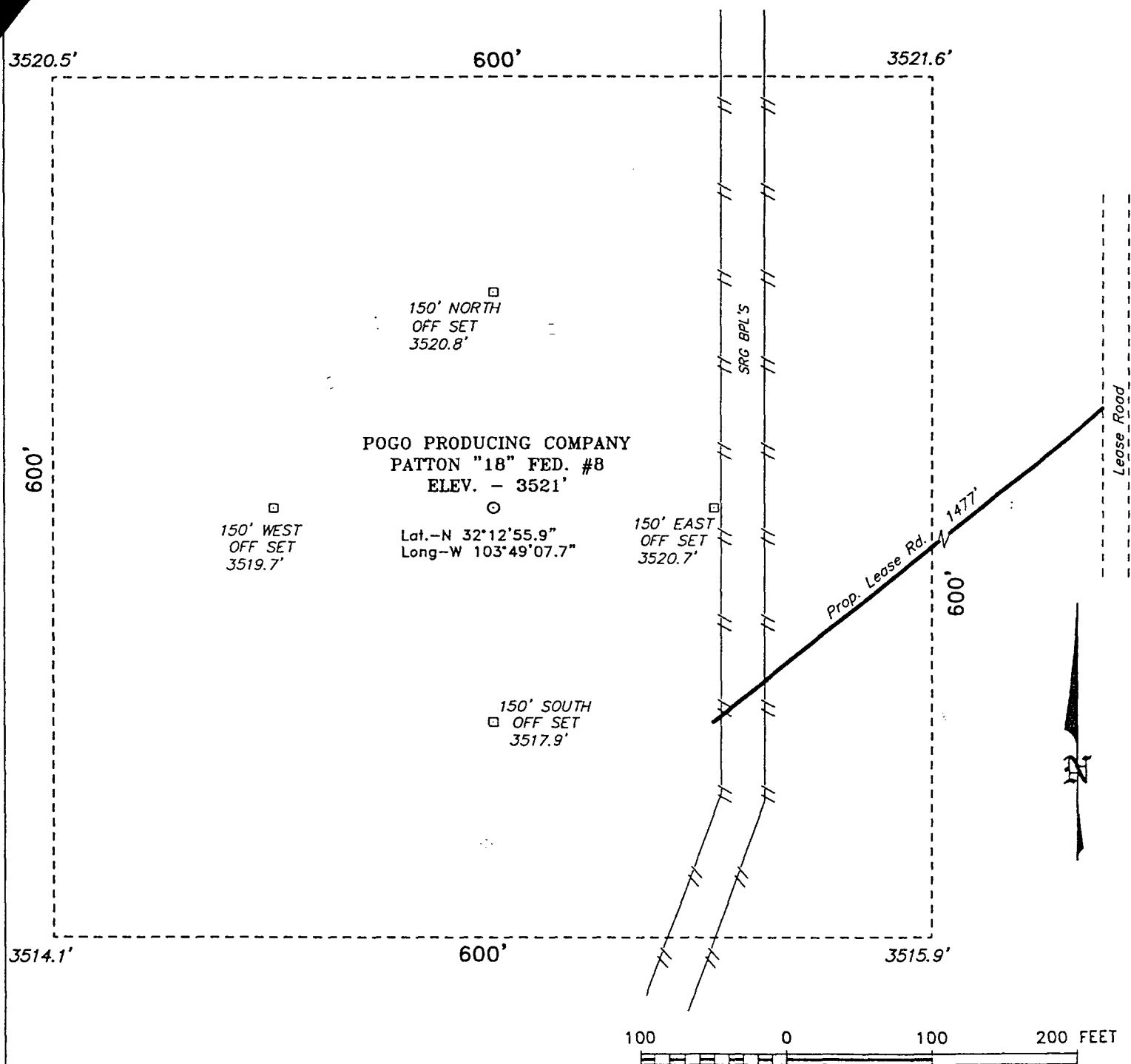
UL or lot No.	Section	Township	Range	Lot Idn	Feet from the	North/South line	Feet from the	East/West line	County
---------------	---------	----------	-------	---------	---------------	------------------	---------------	----------------	--------

Dedicated Acres 40	Joint or Infill	Consolidation Code	Order No.
-----------------------	-----------------	--------------------	-----------

NO ALLOWABLE WILL BE ASSIGNED TO THIS COMPLETION UNTIL ALL INTERESTS HAVE BEEN CONSOLIDATED
OR A NON-STANDARD UNIT HAS BEEN APPROVED BY THE DIVISION

<div><p>LOT 1 - 41.87 AC.</p><p>LOT 2 - 41.94 AC.</p><p>LOT 3 - 42.00 AC.</p><p>LOT 4 - 42.07 AC.</p></div> <div><p>2130'</p><p>1980'</p><p>3520.5'</p><p>3521.6'</p><p>3514.1'</p><p>3515.9'</p><p>Lat.: N32°12'55.9"</p><p>Long.: W103°49'07.7"</p><p>EXHIBIT "A"</p></div>	<div><p>OPERATOR CERTIFICATION</p><p>I hereby certify the the information contained herein is true and complete to the best of my knowledge and belief.</p><p><i>Joe T. Janica</i></p><p>Signature</p><p>Joe T. Janica</p><p>Printed Name</p><p>Agent</p><p>Title</p><p>02/14/05</p><p>Date</p></div> <div><p>SURVEYOR CERTIFICATION</p><p>I hereby certify that the well location shown on this plat was plotted from field notes of actual surveys made by me or under my supervision, and that the same is true and correct to the best of my belief.</p><p>JANUARY 20, 2005</p><p>Date Surveyed</p><p><i>GARY L. JONES</i></p><p>Signature & Seal of Professional Surveyor</p><p>W.D. No. 603</p><p>Certificate No. - Gary L. Jones 7977</p><p>BASIN SURVEYS</p></div>
---	--

SECTION 18, TOWNSHIP 24 SOUTH, RANGE 31 EAST, N.M.P.M.,
EDDY COUNTY, NEW MEXICO.



Directions to Location:

FROM THE JUNCTION OF STATE HWY 128 AND CO.
RD. 787(TWIN WELLS ROAD), GO SOUTH FOR 5.3
MILES TO LEASE ROAD; THENCE NORTH ON LEASE
ROAD TO THE PROPOSED LEASE ROAD WHICH LIES
±500' SOUTH OF THE PATTON #1 WELL PAD.

POGO PRODUCING CO.

REF: PATTON "18" FED. #8 / Well Pad Topo

THE PATTON "18" FED. No. 8 LOCATED 1980' FROM
THE SOUTH LINE AND 2130' FROM THE WEST LINE OF
SECTION 18, TOWNSHIP 24 SOUTH, RANGE 31 EAST,
N.M.P.M., EDDY COUNTY, NEW MEXICO.

BASIN SURVEYS P.O. BOX 1786 - HOBBS, NEW MEXICO

W.O. Number: 5031

Drawn By: K. GOAD

Date: 01-21-2005

Disk: KJG CD#4 - 5031A.DWG

Survey Date: 01-20-2005

Sheet 1 of 1 Sheets

APPLICATION TO DRILL

POGO PRODUCING COMPANY
PATTON "18" FEDERAL # 8
UNIT "K" SECTION 18
T24S-R31E EDDY CO. NM

In response to questions asked under Section II of Bulletin NTL-6 the following information on the above well is provided for your consideration.

1. Location of well: 1980' FSL & 2130' FWL SECTION 18 T24S-R31E EDDY CO. NM

2. Ground Elevation above Sea Level: 3521' GR

3. Geological age of surface formation: Quaternary Deposits:

4. Drilling tools and associated equipment: Conventional rotary drilling rig using drilling mud as a circulating medium to remove solids from hole.

5. Proposed drilling depth: 8400'

6. Estimated tops of geological markers:

Rustler Anhydrite	500'	Cherry Canyon	5184'
Salado Salt	750'	Brushy Canyon	6421'
Delaware	4274'	Bone Spring	8104'
Bell Canyon	4299'	TD	8400'

7. Possible mineral bearing formations:

Brushy Canyon	Oil
Bone Spring	Oil

8. Casing Program:

Hole Size	Interval	OD of Casing	Weight	Thread	Collar	Grade
25"	0-40	20"	NA	NA	NA	Conductor
17½"	0-915	13 3/8"	48#	8-R	ST&C	H-40
11"	0-4200'	8 5/8"	32 & 24	8-R	ST&C	J-55
7 7/8"	0-8400'	4½"	11.6#	8-R	LT&C	N-80 J-55

APPLICATION TO DRILL

POGO PRODUCING COMPANY
PATTON "18" FEDERAL # 8
UNIT "K" SECTION 18
T24S-R31E EDDY CO. NM

9. CEMENTING & CASING SETTING DEPTHS:

20"	Conductor	Set 40' of 20" conductor pipe and cement to surface with Redi-mix.
13 3/8"	Surface	Set 915' of 13 3/8" 48# H-40 ST&C casing. Cement with 800 Sx. of Class "C" cement + 2% CaCl ₂ + 1/4# Flocele/Sx. Circulate cement to surface.
8 5/8"	Intermediate	Set 4200' of 8 5/8" casing as follows: 2000' of 8 5/8" 32# J-55 ST&C, 1200' of 8 5/8" 24# J-55 ST&C. 1000' of 8 5/8" 32# J-55 ST&C casing. Cement with 1200 Sx. of Class "C" cement + additives, circulate cement to surface.
4 1/2"	Production	Set 8400' of 4 1/2" casing as follows: 2400' of 4 1/2" 11.6# N-80 LT&C, 6000' of 4 1/2" 11.6# J-55 LT&C, 1000' of 4 1/2" 11.6# N-80 LT&C casing. Cement in 2 stages DV Tool at 6200'. cement 1st stage with 550 Sx. of Class "H" cement. Cement 2nd stage with 750 Sx. of Class "C" cement + additives. Estimate top of cement 3500' from surface.

10. PRESSURE CONTROL EQUIPMENT:

Exhibit "E" shows a 2000 PSI working pressure B.O.P., consisting of a stripper head instead of an annular preventor, blind rams, and pipe rams. This B.O.P. stack is being used because of Substructure height limitations of the drilling rig being used to drill this well. Pressures encountered during drilling are not expected to exceed 1700 PSI at total depth. Pogo requests permission to 3rd party test of the B.O.P., after setting intermediate casing at 4200'. The B.O.P. will be tested according to API specifications. Exhibit "E-1" shows a manually operated choke manifold, as no remote B.O.P. equipment will be necessary.

11. PROPOSED MUD CIRCULATING SYSTEM:

DEPTH	MUD WT.	VISC.	FLUID LOSS	TYPE MUD
40-915'	8.4-8.7	29-36	NC	Fresh water Spud Mud use paper to control seepage.
9-15-4200'	10.1-10.2	29-38	NC	Brine water use paper to control seepage and high viscosity sweeps to clean hole.
4200-8400'	8.4-8.8	29-40	NC*	Fresh water with Dris-pac if water loss control is needed, high viscosity sweeps to clean hole.

Sufficient mud materials will be kept on location at all times in order to combat lost circulation, or unexpected kicks. In order to run logs, DST's and casing the viscosity and/or water loss may have to be adjusted to meet these needs.

APPLICATION TO DRILL

POGO PRODUCING COMPANY
PATTON "18" FEDERAL # 8
UNIT "K" SECTION 18
T24S-R31E EDDY CO. NM

12. LOGGING, CORING, AND TESTING PROGRAM:

- A. Open hole logs: Dual Induction, SNP, LDT, Gamma Ray; Caliper from TD back to 8 5/8" casing shoe.
- B. Cased hole logs: Gamma Ray, Neutron from 8 5/8" casing shoe back to surface.
- C. Mud logger will be placed on hole at 4200'± and remain on hole to TD.
- D. No Cores or DST's are planned at this time.

13. POTENTIAL HAZARDS:

No abnormal pressures or temperatures are expected. There is no known presence of H²S in this area. If H²S is encountered the operator will comply with the provisions of Onshore Oil and Gas Order No. 6. No lost circulation is expected to occur. All personnel will be familiar with all aspects of safe operation of equipment being used to drill this well. Estimated BHP 1850 PSI, and Estimated BHT 145°.

14. ANTICIPATED STARTING DATE AND DURATION OF OPERATION:

Road and location construction will begin after the BLM has approved the APD. Anticipated spud date will be as soon after BLM approval and as soon as a rig will be available. Move in operation and drilling is expected to take 25 days. If production casing is run then an additional 30 days will be needed to complete well and construct surface facilities and/or lay flowlines in order to place well on production.

15. OTHER FACETS OF OPERATIONS:

After running casing, cased hole Gamma Ray, Neutron Collar logs will be run from TD back to all possible productive zones. The Bone Spring formation will be perforated and stimulated in order to establish production. The well will be swab tested and potentialized as an oil well.

HYDROGEN SULFIDE DRILLING OPERATIONS PLAN

1. All Company and Contract personnel admitted on location must be trained by a qualified H₂S safety instructor to the following:
 - A. Characteristics of H₂S
 - B. Physical effects and hazards
 - C. Proper use of safety equipment and life support systems.
 - D. Principle and operation of H₂S detectors, warning system and briefing areas.
 - E. Evacuation procedure, routes and first aid.
 - F. Proper use of 30 minute pressure demand air pack.
2. H₂S Detection and Alarm Systems
 - A. H₂S detectors and audio alarm system to be located at bell nipple, end of blooie line (mud pit) and on derrick floor or doghouse.
3. Windsock and/or wind streamers
 - A. Windsock at mudpit area should be high enough to be visible.
 - B. Windsock at briefing area should be high enough to be visible.
 - C. There should be a windsock at entrance to location.
4. Condition Flags and Signs
 - A. Warning sign on access road to location.
 - B. Flags to be displayed on sign at entrance to location. Green flag, normal safe condition. Yellow flag indicates potential pressure and danger. Red flag, danger, H₂S present in dangerous concentration. Only emergency personnel admitted to location.
5. Well control equipment
 - A. See exhibit "E" & "E-1"
6. Communication
 - A. While working under masks chalkboards will be used for communication.
 - B. Hand signals will be used where chalk board is inappropriate.
 - C. Two way radio will be used to communicate off location in case of emergency help is required. In most cases cellular telephoned will be available at most drilling foreman's trailer or living quarters.
7. Drillstem Testing
 - A. Exhausts will be watered.
 - B. Flare line will be equipped with an electric ignitor or a propane pilot light in case gas reaches the surface.
 - C. If the location is near to a dwelling a closed DST will be performed.

HYDROGEN SULFIDE DRILLING OPERATIONS PLAN

8. Drilling contractor supervisor will be required to be familiar with the effects H_2S has on tubular goods and other mechanical equipment.
9. If H_2S is encountered, mud system will be altered if necessary to maintain control of formation. A mud gas separator will be brought into service along with H_2S scavengers if necessary.

SURFACE USE PLAN

POGO PRODUCING COMPANY
PATTON "18" FEDERAL # 8
UNIT "K" SECTION 18
T24S-R31E EDDY CO. NM

1. EXISTING ROADS & PROPOSED ROADS: Area maps; Exhibit "B" is a reproduction of a County General Hi-way Map. Exhibit "C" is a reproduction of a USGS Topographic Map, showing existing and proposed roads. All existing roads will be maintained in a condition equal to or better than current conditions. Any new roads will be constructed to BLM specifications.
 - A. Exhibit "A" shows the proposed well site as staked.
 - B. From Hobbs New Mexico take U.S. Hi-way 62-180 West toward Carlsbad New Mexico go approximately 40 miles to the WIPP road, turn Left on to the WIPP road go South 13 miles to CR-802, turn Right go go 4.2 miles to State Hi-way 128, turn Left go 2.4 miles to CR-787 (Twin Wells Road) turn Right go 5.6 miles turn Right (West) go .4 miles turn Left go .2 miles , turn Right go 1500' to location.
 - C. Exhibit "F" shows the routes of new roads, existing roads, proposed powerline, and proposed flowlines.
2. PLANNED ACCESS ROADS: Approximately 1500' of new road will be constructed.
 - A. The access roads will be crowned and ditched to a 12' wide travel surface with a 40' Right-of-Way.
 - B. Gradient of all roads will be less than 5.00%.
 - C. If turn-outs are necessary they will be constructed.
 - D. If needed roads will be surfaced with a minimum of 4" of caliche. This material will be obtained from a local source.
 - E. Center-line for new roads will be flagged. Earth-work will be will be done as field conditions require.
 - F. Culverts will be placed in the access road if they are necessary. The roads will be constructed to utilize low water crossings for drainage as required by topography.
3. LOCATIONS OF EXISTING WELLS IN A ONE MILE RADIUS. EXHIBIT "A-1"
 - A. Water wells - One approximately .6 miles East of location.
 - B. Disposal wells -None known
 - C. Drilling wells -None known
 - D. Producing wells -As shown on Exhibit "A-1"
 - E. Abandoned wells -As shown on Exhibit "A-1"

SURFACE USE PLAN

POGO PRODUCING COMPANY
PATTON "18" FEDERAL # 8
UNIT "K" SECTION 18
T24S-R31E EDDY CO. NM

4. If on completion this well is a producer the operator will lay pipelines and construct powerlines along existing road R-O-W's or other existing R-O-W's. Exhibit "C" shows proposed routes of roads, flowlines and powerlines.

5. LOCATION AND TYPE OF WATER SUPPLY:

Water will be purchased locally from a commercial source and trucked over the access roads or piped to location in flexible lines laid on top of the ground.

6. SOURCE OF CONSTRUCTION MATERIAL:

If possible construction material will be obtained from the excavation of drill site, if additional material is needed it will be obtained from a local source and transported over the access roads as shown on Exhibit "C".

7. METHODS OF HANDLING WASTE MATERIAL:

- A. Drill cuttings will be disposed of in the reserve pits.
- B. All trash, junk and other waste material will be contained in trash cages or trash bins to prevent scattering. When the job is completed all contents will be removed and disposed of in a approved sanitary land fill.
- C. Salts remaining after completion of well will be picked up by the supplier, including broken sacks.
- D. Waste water from living quarters will be drained into holes with a minimum of 10'. These holes will be covered during drilling and will be back filled when the well is completed. A Porto-John will be provided for the rig crews. This equipment will be properly maintained during the drilling and completion operations and will be removed when all operations are complete.
- E. Remaining drilling fluids will be allowed to evaporate in the reserve pits until the pits are dry enough to be broken out for further drying. If the drilling fluids do not evaporate in a reasonable time they will be hauled off by transports to a state approved disposal site. Later pits will be broken out to speed drying. Water produced during completion will be put in reserve pits. Oil and condensate produced will be put in storage tanks and sold.

8. ANCILLARY FACILITIES:

- A. No camps or air strips will be constructed on location.

SURFACE USE PLAN

POGO PRODUCING COMPANY
PATTON "18" FEDERAL # 8
UNIT "K" SECTION 18
T24S-R31E EDDY CO. NM

9. WELL SITE LAYOUT:

- A. Exhibit "D" shows the proposed well site layout.
- B. This Exhibit shows the location of reserve pit, sump pits, and living facilities.
- C. Mud pits in the active circulating system will be steel pits and the reserve pits will be unlined unless subsurface conditions encountered during pit construction indicate that a plastic liner is required to contain lateral migration.
- D. If needed the reserve pits will be lined with polyethelene. The pit liner will be no less than 6 mils thick and the liner will be extended at least 3 feet over the top of the dikes and secured in place to keep edge of liner in place.
- E. The reserve pit will be fenced on three sides and fenced with four strands of barbed wire during drilling and completion phases. The 4th side will be fenced after drilling operations are complete and the drilling rig has moved out. If the well is a producer the mud pits will remain fenced in until the mud has dried up enough to break out the pits and reclaimed according to BLM requirements.

10. PLANS FOR RESTORATION OF SURFACE:

Rehabilitation of the location and reserve pits will be allowed to dry properly, fluids may be moved and disposed of in accordance with article 7-E as previously noted. The pit area will then be leveled and contoured to conform to the original and surrounding area. Drainage systems, if any will be reshaped to the original configuration with provisions made to alleviate future erosion. In case of the well completed as a producer the drilling pad will be necessary to construct production facilities. After the area has been shaped and contoured top soil from the spoil pile will be placed over the disturbed area to the extent possible so that revegetation procedures can be accomplished to comply with the BLM specifications.

If the well is a dry hole the pad and road area will be contoured to match the existing terrain. Top soil will be spread to the extent possible and revegetation will be carried out according to the BLM specifications.

Should the well be a producer the previously noted procedures will apply to those areas which are not required for production facilities.

SURFACE USE PLAN

POGO PRODUCING COMPANY
PATTON "18" FEDERAL # 8
UNIT "K" SECTION 18
T24S-R31E EDDY CO. NM

11. OTHER INFORMATION:

- A. Topography is relatively flat with little or no dip. Soil consists of shallow , silty clay loams with caliche caprock throughout. Vegetation consists of catclawacacia, mesquite, prickley pear, broom snake weed, creosote, Christmas tree cactus, and various other cactus.
- B. Surface is owned by the U.S. Department of Interior and is administered by the Bureau of Land Management. The surface is leased to ranchers for grazing of live stock.
- C. An archaeological survey will be conducted and the results will be filed with The Bureau of Land Management Carlsbad Field office in Carlsbad NM.
- D. There is a ranch dwelling approximately .8 of a mile to the East of the location.

12. OPERATORS REPRESENTATIVE:

Before construction:

TIERRA EXPLORATION, INC.
P.O. BOX 2188
HOBBS, NEW MEXICO 88241
JOE T. JANICA
OFFICE PHONE 505-391-8503

During and after construction:

POGO PRODUCING COMPANY
P.O. BOX 10340
MIDLAND, TEXAS 79702-7340
RICHARD WRIGHT
OFFICE PHONE 915-685-8140

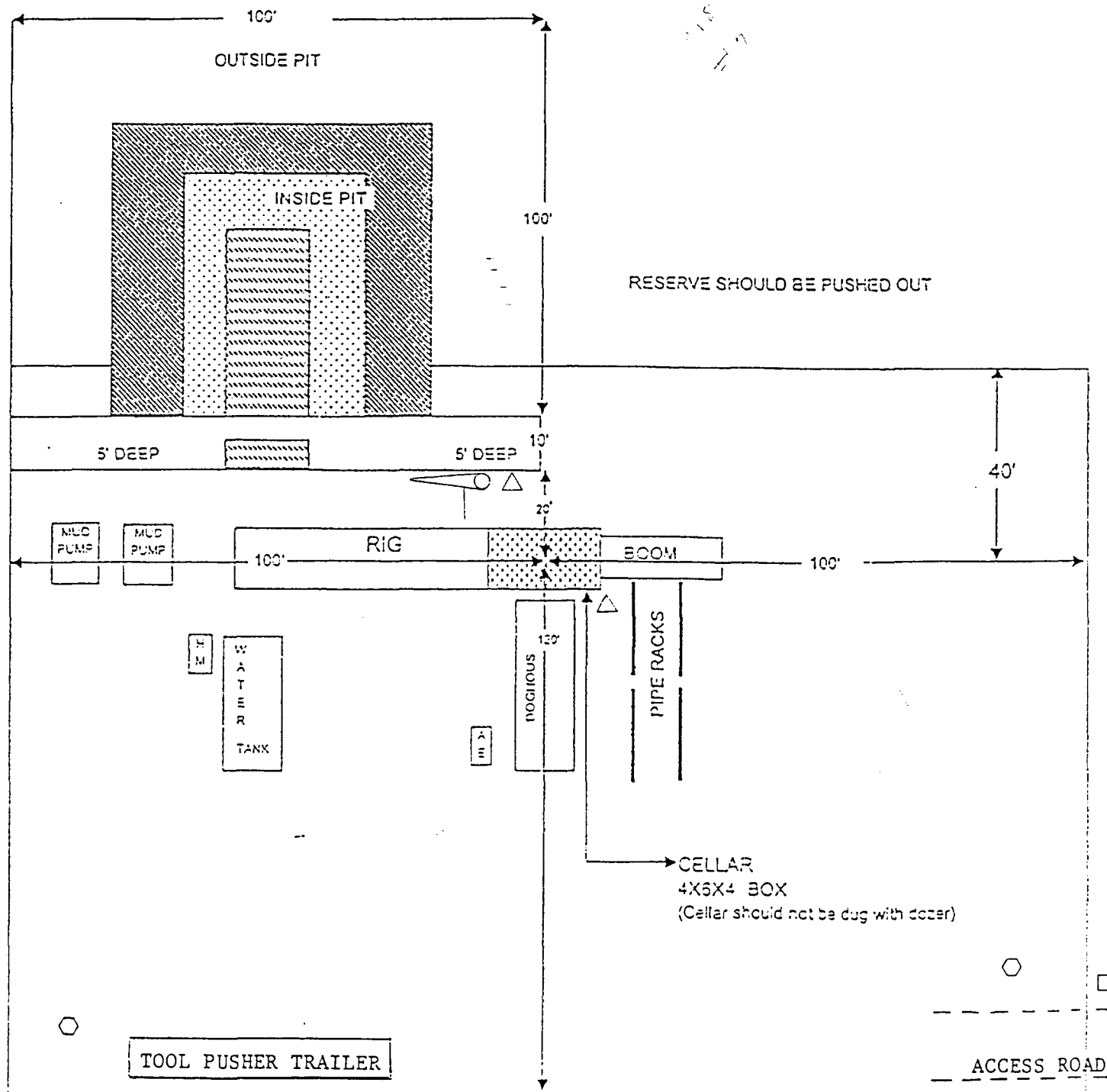
13. CERTIFICATION: I hereby certify that I or persons under my direct supervision have inspected the proposed drill site and access route, that I am familiar with the conditions which currently exist, that the statements made in this plan are to the best of my knowledge, are true and correct, and that the work associated with the operations proposed herein will be performed by POGO PRODUCING COMPANY it's contractors/subcontractors is in the conformity with this plan and the terms and conditions under which it is approved. This statement is subject to the provision of U.S.C. 1001 for the filing of a false statement.

NAME : Joe T. Janica

DATE : 02/14/05

TITLE : Agent

LOCATION SPECIFICATIONS AND RIG LAYOUT FOR EARTH PITS



Cellar can be 4X4X4 if using a screw-on wellhead
Working Pits dug 5' below ground level

- > Wind Direction Indicators
(wind sock or streamers)
- > H2S Monitors
(alarms at bell nipple and shale shaker)
- > Briefing Areas
- > Remote BOP Closing Unit
- > Sign and Condition Flags

Location Specs

EXHIBIT "D" RIG LAY OUT PLAT

POGO PRODUCING COMPANY
PATTON "18" FEDERAL # 8
UNIT "K" SECTION 18
T24S-R31E EDDY CO. NM

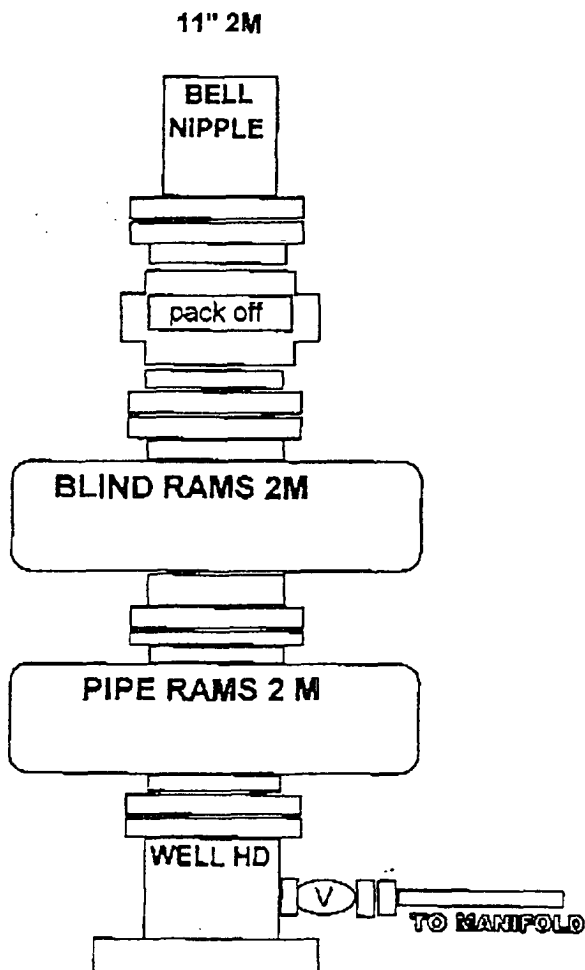


EXHIBIT "E"
SKETCH OF B.O.P. TO BE USED ON

POGO PRODUCING COMAPNY
PATTON "18" FEDERAL # 8
UNIT "K" SECTION 18
T24S-R31E EDDY CO. NM

CHOKE MANIFOLD

3000 PSI WP

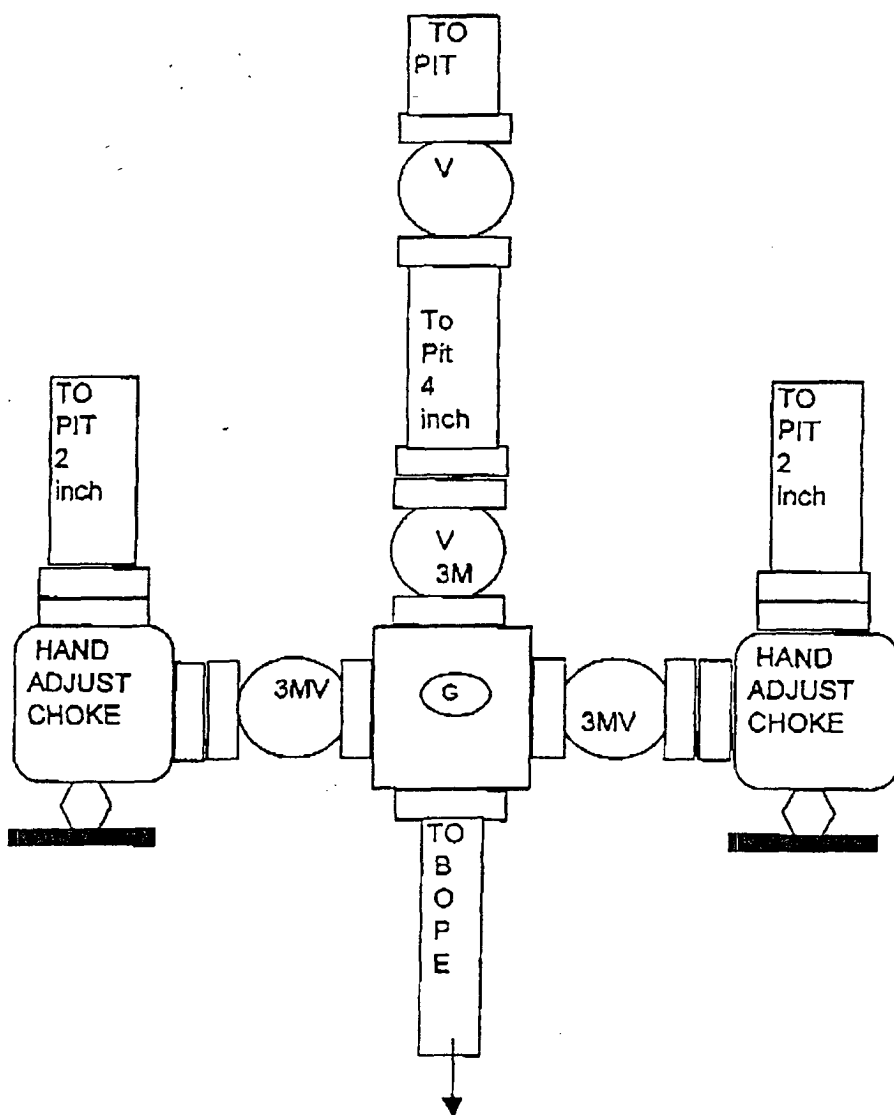


EXHIBIT "E-1"
CHOKE MANIFOLD & CLOSING UNIT

POGO PRODUCING COMPANY
PATTON" 18" FEDERAL # 8
UNIT "K" SECTION 18
T24S-R31E EDDY CO. NM