

**RECEIVED**  
 OCT 26 2012  
 NMOCD ARTESIA

**District I**  
 1625 N. French Dr., Hobbs, NM 89240  
**District II**  
 1301 W. Grand Avenue, Artesia, NM 88210  
**District III**  
 1000 Rio Brazos Rd., Aztec, NM 87410  
**District IV**  
 1220 S. St. Francis Dr., Santa Fe, NM 87505

State of New Mexico  
 Energy, Minerals & Natural Resources Department  
**OIL CONSERVATION DIVISION**  
 1220 South St. Francis Dr.  
 Santa Fe, NM 87505

Form C-102  
 Revised October 15, 2009  
 Submit one copy to appropriate  
 District Office

AMENDED REPORT

**WELL LOCATION AND ACREAGE DEDICATION PLAT**

1 API Number 30-015-40206		2 Pool Code 49622		3 Pool Name Parkway West; Bone Spring	
4 Property Code 38555		5 Property Name <b>CORAL PWU "28"</b>			6 Well Number <b>1H</b>
7 OGRID No. 6137		8 Operator Name <b>DEVON ENERGY PRODUCTION COMPANY, L.P.</b>			9 Elevation 3320.6

10 Surface Location

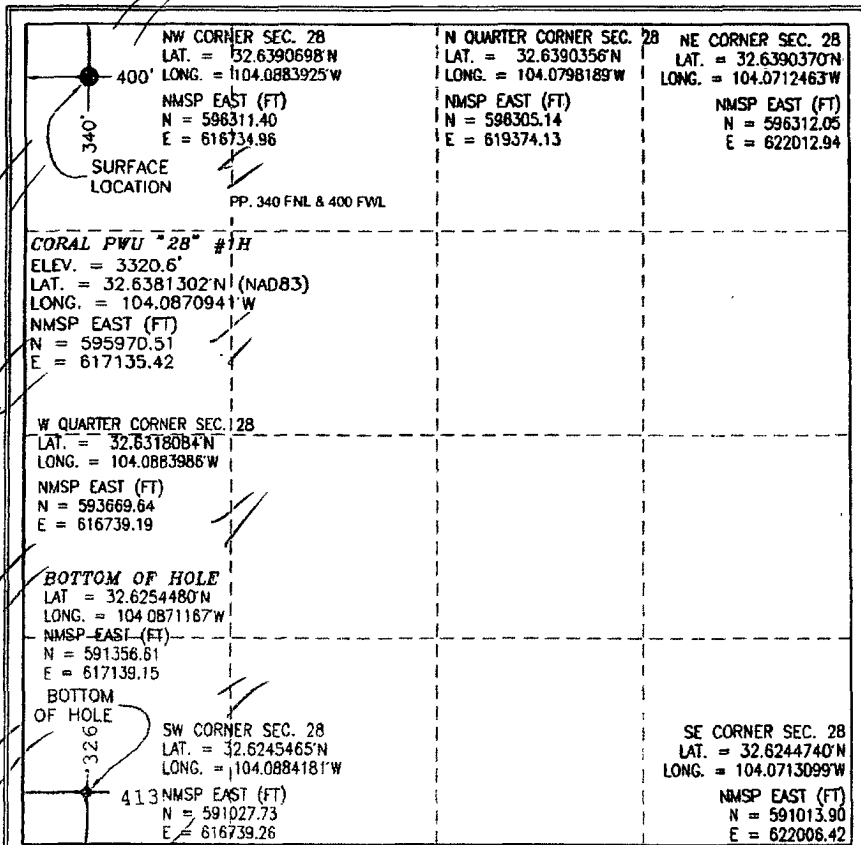
UL or lot no	Section	Township	Range	Lot Idn	Feet from the	North/South line	Feet from the	East/West line	County
<b>D</b>	<b>28</b>	<b>19 S</b>	<b>29 E</b>		<b>340</b>	<b>NORTH</b>	<b>400</b>	<b>WEST</b>	<b>EDDY</b>

11 Bottom Hole Location If Different From Surface

UL or lot no.	Section	Township	Range	Lot Idn	Feet from the	North/South line	Feet from the	East/West line	County
<b>M</b>	<b>28</b>	<b>19 S</b>	<b>29 E</b>		<b>326</b>	<b>SOUTH</b>	<b>413</b>	<b>WEST</b>	<b>EDDY</b>

12 Dedicated Acres 160	13 Joint or Infill	14 Consolidation Code	15 Order No.
---------------------------	--------------------	-----------------------	--------------

No allowable will be assigned to this completion until all interests have been consolidated or a non-standard unit has been approved by the division.



**17 OPERATOR CERTIFICATION**  
 I hereby certify that the information contained herein is true and complete to the best of my knowledge and belief, and that this organization either owns a working interest or undivided mineral interest in the land including the proposed bottom hole location or has a right to drill this well at this location pursuant to a contract with an owner of such a mineral or working interest, or to a voluntary pooling agreement or a compulsory pooling order heretofore entered by the division.

*Melanie Crawford* 10/24/12  
 Signature Date  
 Printed Name  
 Melanie Crawford

**18 SURVEYOR CERTIFICATION**  
 I hereby certify that the well location shown on this plat was plotted from field notes of actual surveys made by me or under my supervision, and that the same is true and correct to the best of my belief.

FEBRUARY 25, 2012  
 Date of Survey

*Armando Jaramilla*  
 Signature and Seal of Professional Surveyor.  
 Certificate Number: FIDMON F JARAMILLA PLS 12797  
 SURVEY NO. 795  
 FRED LAND SURVEYORS