

Hobbs, NM 88240

State of New Mexico

Energy, Minerals and Natural Resources Department

Form C-102
Revised March 17, 1999

II

First, Artesia, NM 88210

Submit to Appropriate District Office

State Lease - 4 Copies

Fee Lease - 3 Copies

DISTRICT III

1000 Rio Brazos Rd., Aztec, NM 87410

DISTRICT IV

2040 South Pacheco, Santa Fe, NM 87505

OIL CONSERVATION DIVISION

2040 South Pacheco

Santa Fe, New Mexico 87504-2088

RECEIVED

APR 29 2005

OOO-ARTESIA

AMENDED REPORT

WELL LOCATION AND ACREAGE DEDICATION PLAT

API Number 30-015-34092	Pool Code	Pool Name Otis Morrow
Property Code	Property Name RIVERBEND "24"	Well Number 1
OGRID No. 6137	Operator Name DEVON ENERGY PRODUCTION COMPANY LP	Elevation 3064'

Surface Location

UL or lot No. K	Section 24	Township 22 S	Range 27 E	Lot Idn	Feet from the 1550	North/South line SOUTH	Feet from the 1980	East/West line WEST	County EDDY
--------------------	---------------	------------------	---------------	---------	-----------------------	---------------------------	-----------------------	------------------------	----------------

Bottom Hole Location If Different From Surface

UL or lot No.	Section	Township	Range	Lot Idn	Feet from the	North/South line	Feet from the	East/West line	County
Dedicated Acres 320	Joint or Infill	Consolidation Code	Order No.						

NO ALLOWABLE WILL BE ASSIGNED TO THIS COMPLETION UNTIL ALL INTERESTS HAVE BEEN CONSOLIDATED
OR A NON-STANDARD UNIT HAS BEEN APPROVED BY THE DIVISION

	<p>OPERATOR CERTIFICATION</p> <p>I hereby certify the the information contained herein is true and complete to the best of my knowledge and belief.</p> <p>Signature Norvella Adams</p> <p>Printed Name Sr. Staff Eng. Tech</p> <p>Title April 6, 2005</p> <p>Date</p>	
	<p>SURVEYOR CERTIFICATION</p> <p>I hereby certify that the well location shown on this plat was plotted from field notes of actual surveys made by me or under my supervision, and that the same is true and correct to the best of my belief.</p> <p>December 02, 2004</p> <p>Date Surveyed</p> <p>Signature Professional Surveyor</p>	
	<p>Seal of Gary L. Jones Professional Surveyor 7977 No. 4877</p>	
	<p>Certification Gary L. Jones 7977 JLP BASIS SURVEY</p>	

SECTION 24, TOWNSHIP 22 SOUTH, RANGE 27 EAST, N.M.P.M.,
EDDY COUNTY, NEW MEXICO.

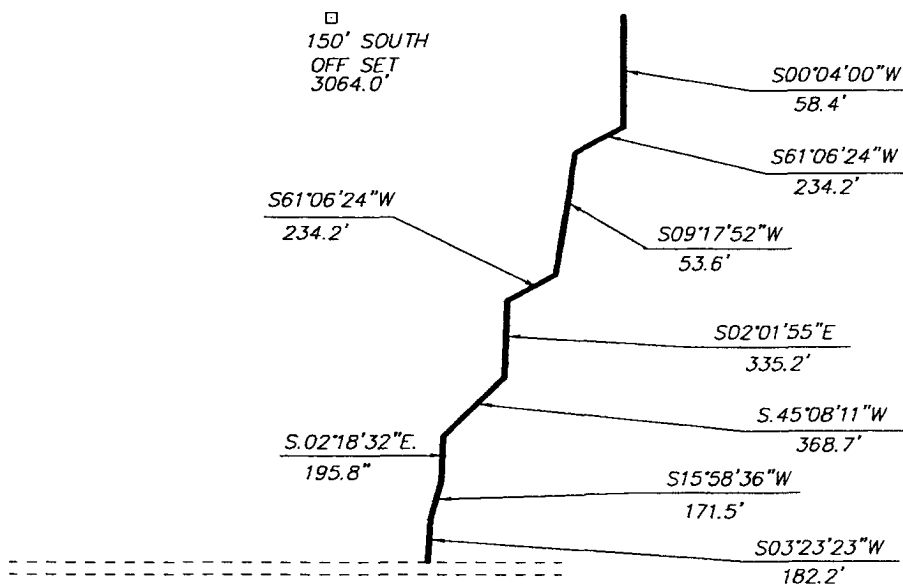
150' NORTH
OFF SET
3065.6'
□

DEVON ENERGY PRODUCTION CO. LP
RIVERBEND "24" #1
ELEV. = 3064'

150' WEST
OFF SET
3064.4'
□

150' EAST
OFF SET
3062.2'
□

○
LAT. - N 32°22'29.8"
LONG. - W 104°08'42.2"



Directions to Location:

FROM THE JUNCTION OF US HWY 285 AND STATE
HWY. 216 GO NORTH ON 216 1.4 MILES TO A ROAD
EAST, THEN EAST 1.4 MILES TO PROPOSED ROAD TO
LOCATION.

BASIN SURVEYS P.O. BOX 1786 - HOBBS, NEW MEXICO

W.O. Number: 4877

Drawn By: JAMES PRESLEY

Date: 12/14/04

Disk: JLP #1 - DEV4877A

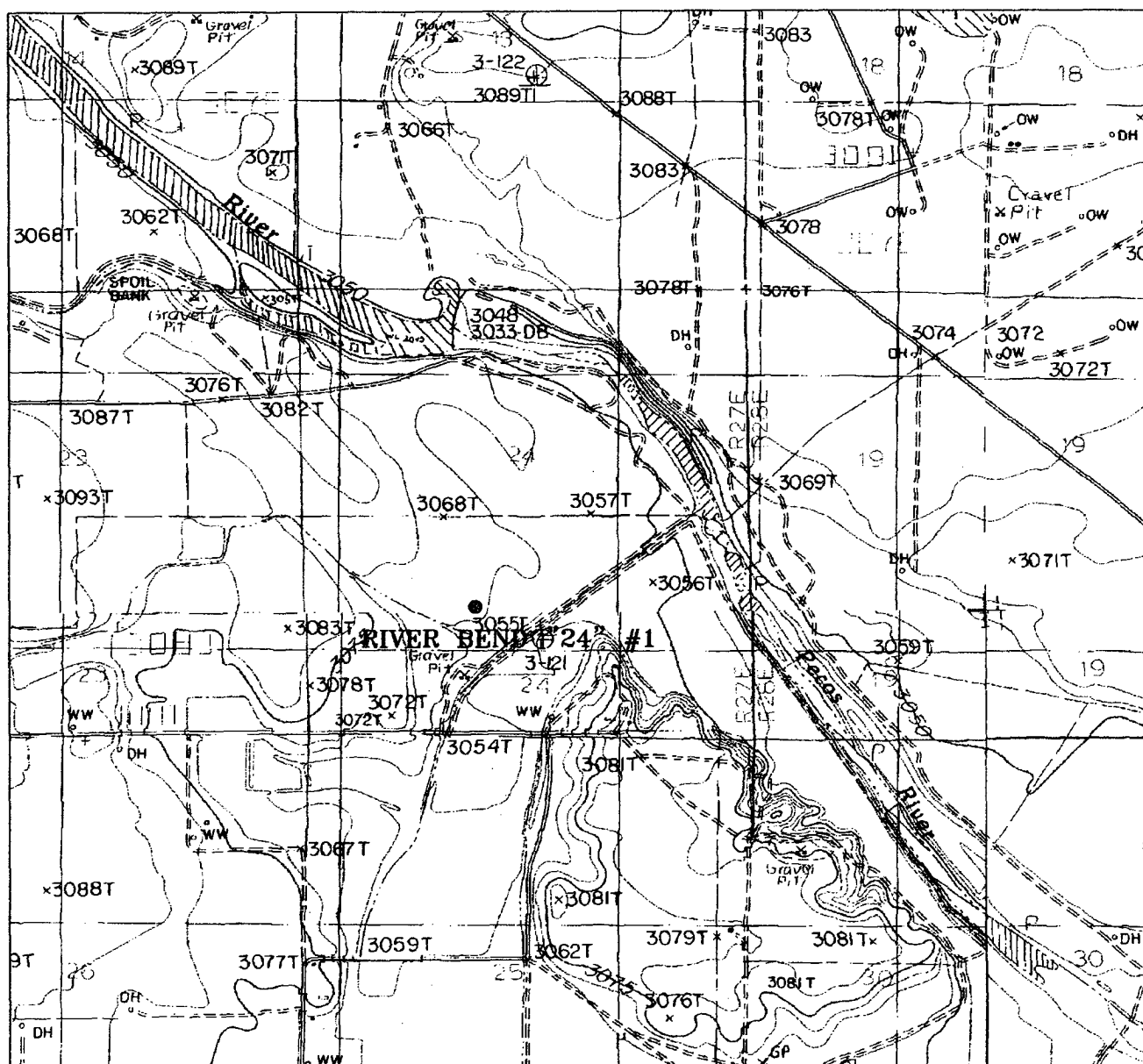
DEVON ENERGY PRODUCTION CO. LP.

REF: RIVERBEND "24" #1 / Well Pad Topo

RIVERBEND "24" #1 LOCATED 1550' FROM THE
SOUTH LINE AND 1980' FROM THE WEST LINE OF
SECTION 24, TOWNSHIP 22 SOUTH, RANGE 27 EAST,
N.M.P.M., EDDY COUNTY, NEW MEXICO.

Survey Date: 12/02/04

Sheet 1 of 1 Sheets



RIVERBEND "24" #1

Located at 1550' FSL and 1980' FWL
 Section 24, Township 22 South, Range 27 East,
 N.M.P.M., Eddy County, New Mexico.

**basin
surveys**
 focused on excellence
 in the oilfield

P.O. Box 1786
 1120 N. West County Rd.
 Hobbs, New Mexico 88241
 (505) 393-7316 - Office
 (505) 392-3074 - Fax
basinsurveys.com

W.O. Number: 4877AA - JLP #1

Survey Date: 12/02/04

Scale: 1" = 2000'

Date: 12/14/04

**DEVON ENERGY
 PRODUCTION
 COMPANY LP.**



RIVERBEND "24" #1

Located at 1550' FSL and 1980' FWL
Section 24, Township 22 South, Range 27 East,
N.M.P.M., Eddy County, New Mexico.

basin
surveys

focused on excellence
in the oilfield

P.O. Box 1786
1120 N. West County Rd.
Hobbs, New Mexico 88241
(505) 393-7316 - Office
(505) 392-3074 - Fax
basinsurveys.com

W.O. Number: 4877AA - JLP #1

Survey Date: 12/02/04

Scale: 1" = 2000'

Date: 12/14/04

DEVON ENERGY
PRODUCTION
COMPANY LP.

**Laboratory Services, Inc.**4016 Fiesta Drive
Hobbs, New Mexico 88240

Telephone: (505) 397-3713

RECEIVED

APR 29 2005

ARTESIA, N.M.

JUN 02 2004

Run File C:\STAR\DATA\05_21_2002\DEVGRANDI#2 5.7.04.RUN
Method C:\star\method_extended_gas_scott.mth
Operator Vickie Biggs Analysis Date 5/7/2004
Station Grandi #2 Company Devon Energy
Effective Date Pulled Data 5/7/04
Received Date Composite/Spot Spot

30-015-34092

Component	Mole %	BTU	GPM
H2S			
Nitrogen	0.4468	0.00	0.0000
Methane	95.6259	968.06	0.0000
CO2	1.2854	0.00	0.0000
Ethane	2.4417	43.31	0.6530
i-Butane	0.0570	1.86	0.0187
n-Butane	0.0567	1.86	0.0179
i-Pentane	0.0235	0.94	0.0086
n-Pentane	0.0109	0.44	0.0040
Cyclopentane	0.0094	0.35	0.0028
2-Methylpentane	0.0059	0.28	0.0025
3-Methylpentane	0.0030	0.14	0.0012
n-Hexane	0.0052	0.25	0.0021
Methylcyclopentane	0.0035	0.16	0.0012
Benzene	0.0058	0.22	0.0016
Cyclohexane	0.0083	0.37	0.0028
n-Heptane	0.0033	0.18	0.0015
Methylcyclohexane	0.0059	0.31	0.0024

Lieberland 24-1 #

- No H2S expected
to be encountered.

5/28/2004

RECEIVED

C:\star\method_extended_gas_scott.mth

APR 29 2005

Operator	Vickie Biggs	Analysis Date	5/7/2004
Station	Grandi #2	Company	Devon Energy
Effective Date		Pulled Data	5/7/04
Received Date		Composite/Spot	Spot

OOD-ARTESIA

<u>Component</u>	<u>Mole %</u>	<u>BTU</u>	<u>GPM</u>
Toluene	0.0011	0.05	0.0004
n-Octane	0.0005	0.03	0.0003
Totals	100.0000	1,018.81	0.7209

Relative Density from Composition	0.5649
BTUs @ 14.65 Saturated	1,003
BTUs @ 14.65 Dry	1,021
Compressibility	0.99797

5/28/2004