

OCD-ARTESIA

FORM APPROVED
OMB No. 1004-0136
Expires November 30, 2000

EC

APPLICATION FOR PERMIT TO DRILL OR REENTER

1a. Type of Work: ☒ DRILL ☐ REENTER

CONFIDENTIAL

1b. Type of Well: ☒ Oil Well ☐ Gas Well ☐ Other ☒ Single Zone ☐ Multiple Zone2. Name of Operator
BASS ENTERPRISES PRODUCTION CO
Contact: CINDI GOODMAN
E-Mail: CDGOODMAN@BASSPET.COM3a. Address
P O BOX 2760
MIDLAND, TX 79702

1801

3b. Phone No. (include area code)
Ph: 432-683-2277

4. Location of Well (Report location clearly and in accordance with any State requirements. *)

At surface SESW 510FSL 1980FWL 32.11497 N Lat, 103.55233 W Lon

At proposed prod. zone SESW 510FSL 1980FWL 32.11497 N Lat, 103.55233 W Lon

14. Distance in miles and direction from nearest town or post office*
14 MILES EAST OF MALAGA, NM15. Distance from proposed location to nearest property or
lease line, ft. (Also to nearest drig. unit line, if any)
510'16. No. of Acres in Lease
2520.68
RECEIVED
MAY 18 200518. Distance from proposed location to nearest well, drilling,
completed, applied for, on this lease, ft.
2800'19. Proposed Depth
7600 MD
7600 TVD
OCD-ARTESIA21. Elevations (Show whether DF, KB, RT, GL, etc.)
3134 GL22. Approximate date work will start
05/15/20055. Lease Serial No.
NMNM02860

6. If Indian, Allottee or Tribe Name

7. If Unit or CA Agreement, Name and No.
NMNM71016X8. Lease Name and Well No.
POKER LAKE UNIT 222

1796

9. API Well No.

30-cis-34123

10. Field and Pool, or Exploratory
NASH DRAW-DELAWARE

47545

11. Sec., T., R., M., or Blk. and Survey or Area

Sec 19 T24S R30E Mer NMP
SME: BLM12. County or Parish
EDDY13. State
NM

17. Spacing Unit dedicated to this well

40.00

20. BLM/BIA Bond No. on file

23. Estimated duration
12 DAYS

24. Attachments

CARLSBAD CONTROLLED WATER BASIN

The following, completed in accordance with the requirements of Onshore Oil and Gas Order No. 1, shall be attached to this form:

1. Well plat certified by a registered surveyor.
2. A Drilling Plan.
3. A Surface Use Plan (if the location is on National Forest System Lands, the SUPO shall be filed with the appropriate Forest Service Office).

4. Bond to cover the operations unless covered by an existing bond on file (see Item 20 above).
5. Operator certification
6. Such other site specific information and/or plans as may be required by the authorized officer.

25. Signature
(Electronic Submission)Name (Printed/Typed)
CINDI GOODMAN Ph: 432-683-2277Date
02/04/2005Title
AUTHORIZED REPRESENTATIVEApproved by (Signature)
/s/ Joe G. LaraName (Printed/Typed)
/s/ Joe G. LaraDate
MAY 17 2005Title
ACTING FIELD MANAGEROffice
CARLSBAD FIELD OFFICE

Application approval does not warrant or certify the applicant holds legal or equitable title to those rights in the subject lease which would entitle the applicant to conduct operations thereon.

Conditions of approval, if any, are attached.

APPROVAL FOR 1 YEAR

Title 18 U.S.C. Section 1001 and Title 43 U.S.C. Section 1212, make it a crime for any person knowingly and willfully to make to any department or agency of the United States any false, fictitious or fraudulent statements or representations as to any matter within its jurisdiction.

Additional Operator Remarks (see next page)

Electronic Submission #53808 verified by the BLM Well Information System
For BASS ENTERPRISES PRODUCTION CO, sent to the Carlsbad
Committed to AFMSS for processing by LINDA ASKWIG on 02/08/2005 (05LA0352AE)APPROVAL SUBJECT TO
GENERAL REQUIREMENTS
AND SPECIAL STIPULATIONS
ATTACHED

Witness Surface Casing.

** BLM REVISED ** BLM REVISED ** BLM REVISED ** BLM REVISED ** BLM REVISED **

See it 29.5

Additional Operator Remarks:

Surface casing to be set into Rustler below all fresh water sands.
Production casing will be cemented using Zone Seal Cement.
Drilling Procedure, BOP Diagram, Anticipated tops & surface plans attached.

This well is located uotside the Secretary's Potash area and outside the R-111 Potash area. There are no potash leases within 1 mile of the location.

DISTRICT I

1625 N. French Dr., Hobbs, NM 88240

DISTRICT II

811 South First, Artesia, NM 88210

DISTRICT III

1000 Elc Branos Rd., Anteo, NM 87410

DISTRICT IV

2040 South Pacheco, Santa Fe, NM 87505

State of New Mexico

Energy, Minerals and Natural Resources Department

Form C-102

Revised March 17, 1999

Submit to Appropriate District Office

State Lease - 4 Copies

Fee Lease - 3 Copies

OIL CONSERVATION DIVISION

2040 South Pacheco

Santa Fe, New Mexico 87504-2088

AMENDED REPORT

WELL LOCATION AND ACREAGE DEDICATION PLAT

API Number	Pool Code 47545	Pool Name NASH DRAW DELAWARE
Property Code 001796	Property Name POKER LAKE UNIT	Well Number 222
OCRID No. 001801	Operator Name BASS ENTERPRISES PRODUCTION COMPANY	Elevation 3134'

Surface Location

UL or lot No.	Section	Township	Range	Lot Idn	Feet from the	North/South line	Feet from the	East/West line	County
N	19	24 S	30 E		510	SOUTH	1980	WEST	EDDY

Bottom Hole Location If Different From Surface

UL or lot No.	Section	Township	Range	Lot Idn	Feet from the	North/South line	Feet from the	East/West line	County
Dedicated Acres 40	Joint or Infill I	Consolidation Code	Order No.						

NO ALLOWABLE WILL BE ASSIGNED TO THIS COMPLETION UNTIL ALL INTERESTS HAVE BEEN CONSOLIDATED
OR A NON-STANDARD UNIT HAS BEEN APPROVED BY THE DIVISION

LOT 1 - 40.77 AC.	40.66 AC.	40.65 AC.	40.65 AC.
LOT 2 - 40.87 AC.	40.69 AC.	40.68 AC.	40.66 AC.
LOT 3 - 40.94 AC.	40.69 AC.	40.68 AC.	40.67 AC.
LOT 4 - 41.06 AC.	40.73 AC.	40.70 AC.	40.70 AC.

3140.3' 3149.5' 3135.9' 3144.8'

1980'

LAT - N32°11'49.7"
LONG - W103°55'23.3"

OPERATOR CERTIFICATION

I hereby certify the the information contained herein is true and complete to the best of my knowledge and belief.

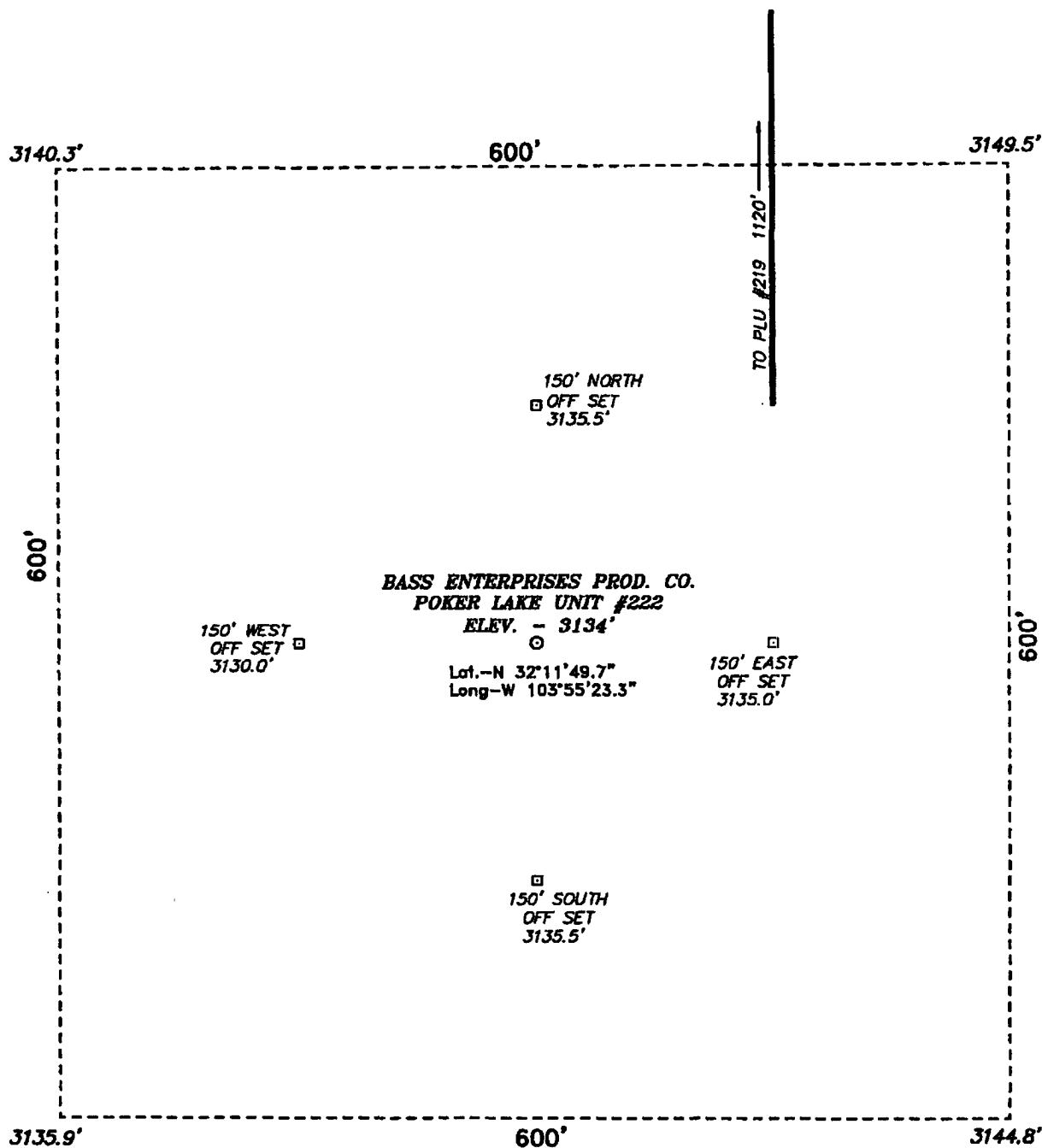
William R. Dannels
Signature
W.R. DANNELS
Printed Name
DIVISION DRILLING SUPT.
Title
2/4/05
Date

SURVEYOR CERTIFICATION

I hereby certify that the well location shown on this plat was plotted from field notes of actual surveys made by me or under my supervision, and that the same is true and correct to the best of my belief.

APR 15 2004
DATE SURVEYED
NEW MEXICO
Signature & Seal of Professional Surveyor
W. J. GROSS
Certificate No. Gary L. Jones 7977
BASIN SURVEYS

SECTION 19, TOWNSHIP 24 SOUTH, RANGE 30 EAST, N.M.P.M., EDDY COUNTY, NEW MEXICO.



100 0 100 200 FEET
SCALE: 1" = 100'

DIRECTIONS TO LOCATION:

FROM THE JUNCTION OF CO. RD. 746A AND CO. RD. 748, GO EASTERLY ON CO. RD. 746A FOR APPROX. 0.25 MILE TO A POINT ON THE PROPOSED PLU #219 WELL PAD AND THE PROPOSED LEASE ROAD TO THE PLU #222.

BASS ENTERPRISES PRODUCTION CO.

REF: POKER LAKE UNIT No. 222 / Well Pad Topo

THE POKER LAKE UNIT No. 222 LOCATED 510' FROM
THE SOUTH LINE AND 1980' FROM THE WEST LINE OF
SECTION 19, TOWNSHIP 24 SOUTH, RANGE 30 EAST,
N.M.P.M., EDDY COUNTY, NEW MEXICO.

BASIN SURVEYS P.O. BOX 1786-HOBBS, NEW MEXICO

W.O. Number: 4149

Drawn By: K. GOAD

Date: 04-23-2004

Disk: KJG CD#7 - 4149A.DWG

Survey Date: 04-15-2004

Sheet 1 of 1 Sheets

**EIGHT POINT DRILLING PROGRAM
BASS ENTERPRISES PRODUCTION CO.**

NAME OF WELL: Poker Lake Unit #222

LEGAL DESCRIPTION - SURFACE: 510' FSL & 1980' FWL, Section 19, T-24-S, R-30-E, Eddy County, New Mexico.

POINT 1: ESTIMATED FORMATION TOPS

(See No. 2 Below)

POINT 2: WATER, OIL, GAS AND/OR MINERAL BEARING FORMATIONS

Anticipated Formation Tops: KB 3154' (est) GL 3134'

<u>FORMATION</u>	<u>ESTIMATED TOP FROM KB</u>	<u>ESTIMATED SUBSEA TOP</u>	<u>BEARING</u>
T/Rustler	129'	+3025	Barren
T/Salt	369'	+2785'	Barren
T/Lwr Brushy Canyon "8" A	6939'	-3785'	Oil/Gas
T/Bone Spring	7212'	-4058'	Oil/Gas
TD	7600'	-4446'	

POINT 3: CASING PROGRAM

<u>TYPE</u>	<u>INTERVALS</u>	<u>PURPOSE</u>	<u>CONDITION</u>
16"	0' - 40'	Conductor	Contractor Discretion
8-5/8", 28#, J-55, LT&C	0' - 330'	Surface	New
5-1/2", 15.5#, J-55, LT&C	0' - 6300'	Production	New
5-1/2", 17#, J-55, LT&C	6300' - 7700'	Production	New

WITNESS

POINT 4: PRESSURE CONTROL EQUIPMENT (SEE ATTACHED DIAGRAM)

A BOP equivalent to Diagram 1 will be nipped up on the surface casing head. The BOP stack choke, kill lines, kelly cocks, inside BOP, etc. will be hydro-tested to 70% of internal yield pressure of casing. In addition to the high pressure test, a low pressure (200 psi) test will be required. These tests will be performed:

- a) Upon installation
- b) After any component changes
- c) Fifteen days after a previous test
- d) As required by well conditions

A function test to insure that the preventers are operating correctly will be performed on each trip.

POINT 5: MUD PROGRAM

<u>DEPTH</u>	<u>MUD TYPE</u>	<u>WEIGHT</u>	<u>FV</u>	<u>PV</u>	<u>YP</u>	<u>FL</u>	<u>Ph</u>
0' - 330'	FW Spud Mud	8.5 - 9.2	70-38	NC	NC	NC	10.0
330' - 5600'	Brine Water	9.8 -10.2	28-30	NC	NC	NC	9.5-10.5
5600' - TD'	Brine Water/Diesel	8.8 - 9.0	32-40	8	2	<25 cc	9.5 - 10.0

**May increase vis for logging purposes only.*

POINT 6: TECHNICAL STAGES OF OPERATION**A) TESTING**

None anticipated.

B) LOGGING

GR-CNL-LDT-AIT from TD to base of Salt (+/- 3200').
GR-CNL-CAL from base of Salt to surface.

C) CONVENTIONAL CORING

None anticipated.

D) CEMENT

<u>INTERVAL</u>	<u>AMOUNT SXS</u>	<u>FT OF FILL</u>	<u>TYPE</u>	<u>GALS/SX</u>	<u>PPG</u>	<u>FT³/SX</u>		
SURFACE:								
Lead 0' - 330' (100% excess circ to surface)	210	330	Prem Plus + 2% CaCl ₂ + 1/2# Flocele	6.33	14.8	1.35		
PRODUCTION:							Nitrogen	Compressive Strength
Base Slurry w/nitrogen 2900-7600' + (50% excess)	775	4700	Premium Plus + 2% Zone Sealant 2000	6.32	9.1-14.5	2.3-1.39	300/600 scf/bbl	1200

E) DIRECTIONAL DRILLING

No directional services anticipated.

POINT 7: ANTICIPATED RESERVOIR CONDITIONS

Normal pressures are anticipated throughout Delaware section. A BHP of 3308 psi (max) or MWE of 8.7 ppg is expected. Lost circulation may exist in the Delaware Section from 3423-7212'. No H₂S is anticipated.

POINT 12: OPERATOR'S FIELD REPRESENTATIVE

Page 6

(Field personnel responsible for compliance with development plan for surface use).

DRILLING

William R. Dannels
Box 2760
Midland, Texas 79702
(432) 683-2277

PRODUCTION

Mike Waygood
3104 East Green Street
Carlsbad, New Mexico 88220
(505) 887-7329

Kent A. Adams
Box 2760
Midland, Texas 79702
(432) 683-2277

POINT 13: CERTIFICATION

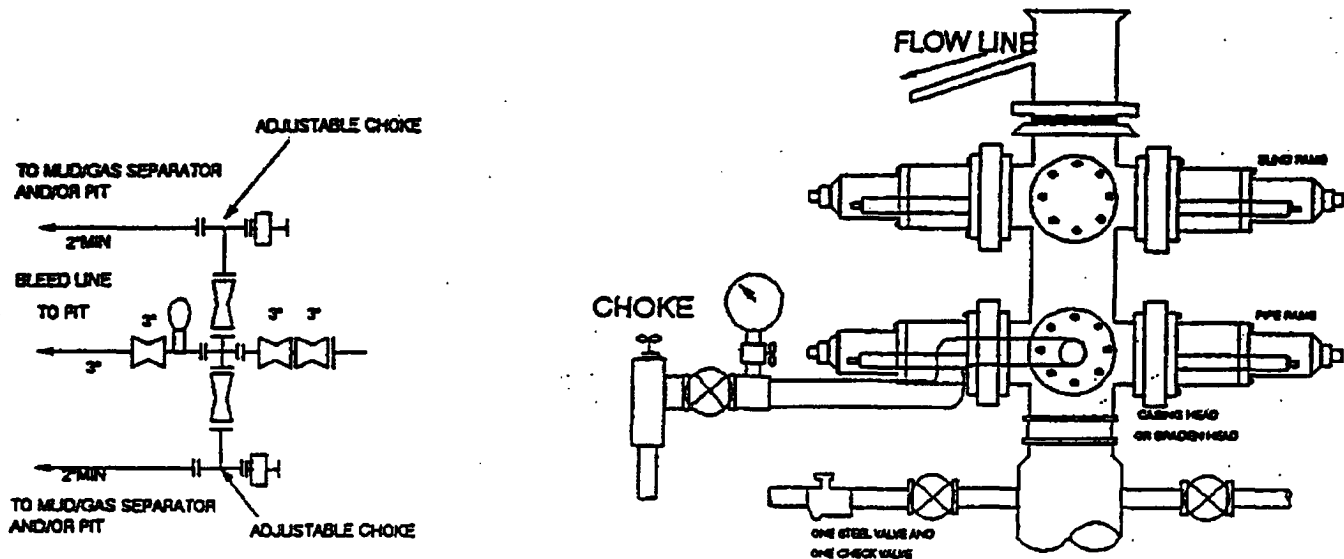
I hereby certify that I, or persons under my direct supervision have inspected the proposed drill site and access route; that I am familiar with the conditions which currently exist; that the statements made in the plan are, to the best of my knowledge, true and correct; and that the work associated with operations proposed herein will be performed by Bass Enterprises Production Co. and its contractors and subcontractors in conformity with this plan and the terms and conditions under which it is approved. This statement is subject to the provisions of 18 U.S.C. 1001 for the filing of a false statement.

2/4/05
Date

William R. Dannels
William R. Dannels

WCH/cdg

2000 PSI WP



THE FOLLOWING CONSTITUTE MINIMUM BLOWOUT PREVENTER REQUIREMENTS

- A. One double gate blowout preventer with lower rams for pipe and upper rams blind, all hydraulically controlled.
- B. Opening on preventers between rams to be flanged, studded or clamped and at least two inches in diameter.
- C. All connections from operating manifold to preventers to be all steel hose or tube a minimum of one inch in diameter.
- D. The available closing pressure shall be at least 15% in excess of that required with sufficient volume to operate (close, open, and re-close) the preventers.
- E. All connections to and from preventers to have a pressure rating equivalent to that of the BOP's.
- F. Manual controls to be installed before drilling cement plug.
- G. Valve to control flow through drill pipe to be located on rig floor.
- H. All chokes will be adjustable. Choke spool may be used between rams.

Bass Enterprises Production Company
Grey Wolf Rig 15
Well Pad
Reserve Pit Diagram

POKER LAKE UNIT #222

EXHIBIT "D"

