

State of New Mexico
Energy Minerals and Natural Resources

Form C-101
May 27, 2004

District II
1301 W. Grand Avenue, Artesia, NM 88210
District III
1000 Rio Brazos Road, Aztec, NM 87410
District IV
1220 S. St. Francis Dr., Santa Fe, NM 87505

Oil Conservation Division
1220 South St. Francis Dr.
Santa Fe, NM 87505

Submit to appropriate District Office

☐ AMENDED REPORT

OCD-ARTESIA

APPLICATION FOR PERMIT TO DRILL, RE-ENTER, DEEPEN, PLUGBACK, OR ADD A ZONE

Operator Name and Address Mewbourne Oil Company Po Box 5270 Hobbs, NM 88240		OGRID Number 14744
Property Code	Property Name Mosley Canyon 33 St	API Number 30 - 015 - 34164
Well No. 1	Proposed Pool 1 Unders. Horse shoe Bend; Morrow 78680	
Proposed Pool 2		

UL or lot no. L	Section 33	Township 23S	Range 25E	Lot Idn	Feet from the 1650'	North/South line S	Feet from the 990'	East/West line W	County Eddy
--------------------	---------------	-----------------	--------------	---------	------------------------	-----------------------	-----------------------	---------------------	----------------

Proposed Bottom Hole Location If Different From Surface

UL or lot no.	Section	Township	Range	Lot Idn	Feet from the	North/South line	Feet from the	East/West line	County
---------------	---------	----------	-------	---------	---------------	------------------	---------------	----------------	--------

Additional Well Information

Work Type Code N	Well Type Code G	Cable/Rotary R	Lease Type Code S	Ground Level Elevation 3745'
Multiple No	Proposed Depth 11400'	Formation Morrow	Contractor TBA	Spud Date ASAP
Depth to Groundwater 50' or more but less than 100 (over 100') 0 points		Distance from nearest fresh water well Less than 1000 from all other wtr sources (1000' or more --0 pts)		Distance from nearest surface water (1000' or more --0 pts)
Pit: Liner: Synthetic <input checked="" type="checkbox"/> 12 mils thick Clay <input type="checkbox"/> Pit Volume: 24000 bbls Drilling Method: Production Closed-Loop System <input type="checkbox"/> Fresh Water <input checked="" type="checkbox"/> Brine <input checked="" type="checkbox"/> Diesel/Oil-based <input type="checkbox"/> Gas/Air <input type="checkbox"/>				

Proposed Casing and Cement Program

Hole Size	Casing Size	Casing weight/foot	Setting Depth	Sacks of Cement	Estimated TOC
17 1/2"	13 3/8"	48#	400'	600	Surface
12 1/4"	9 5/8"	40#	2400'	1200	Surface
8 3/4"	5 1/2"	17#	11400'	1000	500' above WC

22 Describe the proposed program. If this application is to DEEPEN or PLUG BACK, give the data on the present productive zone and proposed new productive zone. Describe the blowout prevention program, if any. Use additional sheets if necessary.

BOP Program: 2k Hydril (see Exhibit #2) from surface casing to intermediate TD. Schaffer LWS or equivalent (Double-Ram Hydraulic) 1500 series with Hydril 900 Series (See Exhibit #2A) from intermediate casing to total depth. Rotating head, PVT, flow monitors and mud gas Separator from the Wolfcamp to TD.

Mud Program: 0' to 400' Fresh Water, spud mud, lime for PH and LCM as needed for seepage.
 400' to 2400' ~~Brine~~ Water, lime for PH and LCM as needed for seepage.
 2400' to 9400' Cut brine with Fresh Water, lime for PH and LCM as needed for seepage.
 9400' to TD Cut brine. 9.3 #/g, Caustic for PH, Starch for WL control and LCM as needed for seepage.

CEMENT TO COVER ALL OIL,
GAS AND WATER BEARING
ZONES

23 I hereby certify that the information given above is true and complete to the best of my knowledge and belief. I further certify that the drilling pit will be constructed according to NMOC guidelines ☒ a general permit ☐, or an (attached) alternative OCD-approved plan ☐.

Printed name: Kristi Green

Title: Hobbs Production

E-mail Address: kgreen@mewbourne.com

Date: 06/17/05

Phone: 505-393-5905

OIL CONSERVATION DIVISION

Approved by:

Title:

Approval Date: JUN 24 2005

Conditions of Approval Att

NOTIFY OCD OF SPUD & TIME
TO WITNESS CEMENTING OF
SURFACE CASING

Intermediate

DISTRICT I
1625 N. French Dr., Hobbs, NM 88240

DISTRICT II
811 South First, Artesia, NM 88210

DISTRICT III
1000 Rio Brazos Rd., Aztec, NM 87410

DISTRICT IV
2040 South Pacheco, Santa Fe, NM 87505

State of New Mexico
Energy, Minerals and Natural Resources Department

Form C-102
Revised March 17, 1999

Submit to Appropriate District Office
State Lease - 4 Copies
Fee Lease - 3 Copies

OIL CONSERVATION DIVISION

2040 South Pacheco
Santa Fe, New Mexico 87504-2088

☐ AMENDED REPORT

WELL LOCATION AND ACREAGE DEDICATION PLAT

API Number	Pool Code	Pool Name
		Baldrige Canyon Morrow
Property Code	Property Name	Well Number
	MOSLEY CANYON "33" STATE	1
OGRID No. 14744	Operator Name	Elevation
	MEWBOURNE OIL COMPANY	3745'

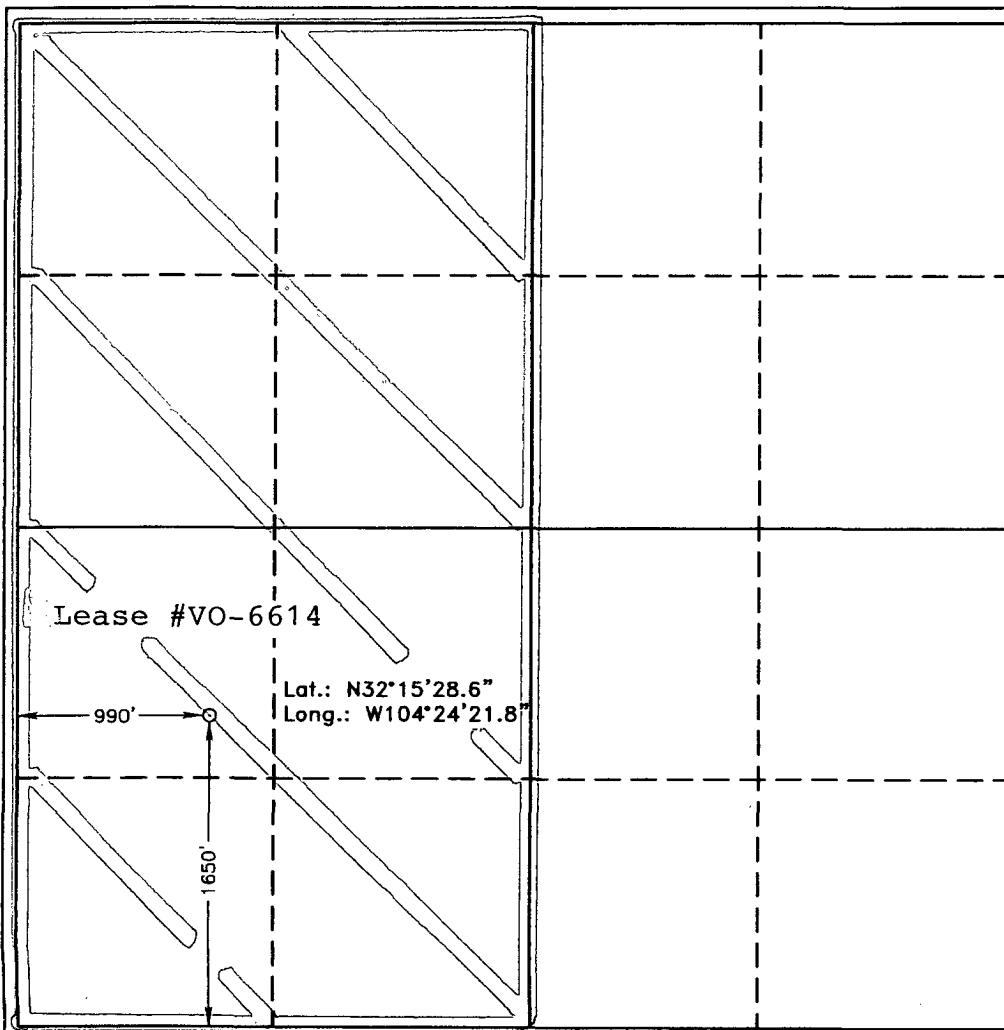
Surface Location

UL or lot No.	Section	Township	Range	Lot Idn	Feet from the	North/South line	Feet from the	East/West line	County
L	33	23 S	25 E		1650	SOUTH	990	WEST	EDDY

Bottom Hole Location If Different From Surface

UL or lot No.	Section	Township	Range	Lot Idn	Feet from the	North/South line	Feet from the	East/West line	County
Dedicated Acres	Joint or Infill	Consolidation Code	Order No.						
320.95									

NO ALLOWABLE WILL BE ASSIGNED TO THIS COMPLETION UNTIL ALL INTERESTS HAVE BEEN CONSOLIDATED
OR A NON-STANDARD UNIT HAS BEEN APPROVED BY THE DIVISION



OPERATOR CERTIFICATION

I hereby certify the the information
contained herein is true and complete to the
best of my knowledge and belief.

Kristi Green
Signature

Kristi Green
Printed Name
Hobbs Regulatory

Title
06/10/05
Date

SURVEYOR CERTIFICATION

I hereby certify that the well location shown
on this plat was plotted from field notes of
actual surveys made by me or under my
supervision, and that the same is true and
correct to the best of my belief.

JUNE 1, 2005

Date Surveyed
Signature & Seal of
Professional Surveyor

GARY L. JONES
7977
W.S. No. 5466
Certificate No. Gary L. Jones 7977
BASIN SURVEYS

MULTI-POINT SURFACE USE AND OPERATIONS PLAN
MEWBOURNE OIL COMPANY

Mosley Canyon "33" State #1
1650' FSL & 990' FWL
Sec 33-T23S-R25E
Eddy County, New Mexico

This plan is submitted with Form C101, Application for Permit to Drill, covering the above described well. The purpose of this plan is to describe the location of the proposed well, the proposed construction activities and operations plan, the magnitude of the surface disturbance involved, and the procedures to be followed in restoring the surface so that a complete appraisal can be made of the environmental impact associated with the proposed operations.

1. Existing Roads:

- A. Exhibit #3 is a road map showing the location of the proposed well. Exhibit #3A is a topographic map showing the location of the proposed well and access road. Existing roads are highlighted in red and proposed roads are highlighted in yellow.
- B. **Directions to location: South from Carlsbad, NM on US 62/180 approx 5 miles to Dark Canyon Road (CR 408). Turn right and continue west and south 8.5 miles. Turn right and continue north 0.3 miles. Turn left and continue west 0.25 miles to new location.**

2. Proposed Access Road:

- A Will improve 0.3 miles of existing road. Approx 1400' of new road will be needed. Road will enter location from SE corner.

3. Location of Existing and/or Proposed Facilities:

- A. There are no production facilities on this lease at the present time.
- B. In the event that the well is productive, production facilities will be located on the well pad.

4. Location and Type of Water Supply

The well will be drilled with a combination of fresh water and brine water based mud systems. The water will be obtained from commercial suppliers in the area and/or hauled to the location by transport trucks over existing and proposed roads as indicated in Exhibit #3.

5. Source of Construction Materials

All material required for construction of the drill pad and access roads will be obtained from private, state, or federal pits. The construction contractor will be solely responsible for securing construction materials required for this operation and paying any royalties that may be required on those materials.

6. Methods of Handling Waste Disposal:

- A. Drill cuttings not retained for evaluation purposed will be disposed of in the reserve pit.
- B. Drilling fluids will be allowed to evaporate in the reserve pit prior to closure.
- C. Water produced during operations will be disposed of in the reserve pit.
- D. If any liquid hydrocarbons are produced during operations, those liquids will be stored in suitable tanks until sold.
- E. Current regulations regarding the proper disposal of human waste will be followed.
- F. All trash, junk, and other waste materials will be stored in proper containers to prevent dispersal and will be removed to an appropriate facility within one week of cessation of drilling and completion activities.

7. Ancillary Facilities

There are no ancillary facilities within the immediate vicinity of the proposed well site.

8. Well Site Layout

- A. A diagram of the drill pad is shown in Exhibit #5. Dimensions of the pad, pits, and location of major rig components are shown.
- B. The reserve pit will be lined with a high quality plastic sheeting to prevent migration of fluids as per OCD regulations.
- C. The pad dimension of 400' X 250' have been staked and flagged.

9. Plans for Restoration of Surface

- A. Upon cessation of the proposed operations, if the well is abandoned, the location and road will be ripped and re-seeded. The reserve pit area, after allowing to dry will be leveled. The entire location will be restored to the original contour as much as reasonable possible. All trash, garbage, and pit lining will be hauled to appropriate disposal to assure the location is aesthetically pleasing as reasonable possible. All restoration work will be completed within 180 days of cessation of activities.
- B. The disturbed area will be restored by re-seeding during the proper growing season.
- C. Three sides of the reserve pit will be fenced prior to and during drilling operations. The reserve pit will be fenced on the fourth side after the drilling rig is removed to prevent the endangerment of livestock. The fence will remain in place until the pit area has been leveled and restored.

MULTI-POINT SURFACE USE AND OPERATIONS PLAN

MEWBOURNE OIL COMPANY

Mosley Canyon 33 St #1

Page 3

- D. Upon cessation of the proposed operations, if the well is not abandoned, the reserve pit area will be restored as per OCD guidelines. Any additional caliche required for production facilities will be obtained from a source as described in Section 6.

10. Surface Ownership:

The surface is owned by: State of New Mexico

11. Other Information

- A. The primary use of the surface at the location is for grazing of livestock.

12. Operator's Representative:

- A. Through APD approval, drilling operations, completion and production operations:

NM Young, District Manager
Mewbourne Oil Company
PO Box 5270
Hobbs, NM 88241
505-393-5905

14. Certification

I hereby certify that I, or persons under my direct supervision, have inspected the proposed drill site and access route; that I am familiar with the conditions which currently exist; that the statements made in this plan are to the best of my knowledge, true and correct; and the work associated with the operations proposed herein will be performed by Mewbourne Oil Company, its contractors and subcontractors, in accordance with this plan and the terms and conditions under which it is approved. This statement is subject to the provisions of 18 U.S.C. 1001 for the filing of a false statement.

Date: 06/17/05

Signature: NM Young
by Kristi Green

NM Young
Mewbourne Oil Company
PO Box 5270
Hobbs, NM 88241
(505) 393-5905

Hydrogen Sulfide Drilling Operations Plan

Mewbourne Oil Company

Mosley Canyon "33" St #1

1650' FSL & 990' FWL

Section 33-T23S-R25E

Eddy County, New Mexico

1. Hydrogen Sulfide Training

All personnel, whether regularly assigned, contracted, or employed on an unscheduled basis, will have received training from a qualified instructor in the following areas prior to entering the drilling pad area of the well:

1. The hazards and characteristics of hydrogen sulfide gas.
2. The proper use of personal protective equipment and life support systems.
3. The proper use of hydrogen sulfide detectors, alarms, warning systems, briefing areas, evacuation procedures.
4. The proper techniques for first aid and rescue operations.

Additionally, supervisory personnel will be trained in the following areas:

- 1 The effects of hydrogen sulfide on metal components. If high tensile tubular systems are utilized, supervisory personnel will be trained in their special maintenance requirements.
- 2 Corrective action and shut in procedures, blowout prevention, and well control procedures while drilling a well.
- 3 The contents of the Hydrogen Sulfide Drilling Operations Plan.

There will be an initial training session prior to encountering a known hydrogen sulfide source. The initial training session shall include a review of the site specific Hydrogen Sulfide Drilling Operations Plan.

2. Hydrogen Sulfide Safety Equipment and Systems

All hydrogen sulfide safety equipment and systems will be installed, tested, and operational prior to drilling below the intermediate casing.

1. Well Control Equipment
 - A. Flare line with automatic igniter or continuous ignition source.
 - B. Choke manifold with minimum of one adjustable choke.
 - C. Blowout preventers equipped with blind rams and pipe rams to accommodate all pipe sizes with properly sized closing unit
 - D. Auxiliary equipment including rotating head and annular type blowout preventer.
2. Protective Equipment for Essential Personnel

Thirty minute self contained work unit located at briefing area as indicated on wellsite diagram.
3. Hydrogen Sulfide Protection and Monitoring Equipment

Two portable hydrogen sulfide monitors positioned on location for optimum coverage and detection. The units shall have audible sirens to notify personnel when hydrogen sulfide levels exceed 20 ppm.

4. Visual Warning Systems

A. Wind direction indicators as indicated on the wellsite diagram.

B. Caution signs shall be posted on roads providing access to location. Signs shall be painted a high visibility color with lettering of sufficient size to be readable at reasonable distances from potentially contaminated areas.

3. **Mud Program**

The mud program has been designed to minimize the amount of hydrogen sulfide entrained in the mud system. Proper mud weight, safe drilling practices, and the use of hydrogen sulfide scavengers will minimize hazards while drilling the well.

4. **Metallurgy**

All tubular systems, wellheads, blowout preventers, drilling spools, kill lines, choke manifolds, and valves shall be suitable for service in a hydrogen sulfide environment when chemically treated.

5. **Communications**

State & County Officials phone numbers are posted on rig floor and supervisors trailer. Communications in company vehicles and toolpushers are either two way radios or cellular phones.

6. **Well Testing**

Drill stem testing is not an anticipated requirement for evaluation of this well. A drill stem test is required, it will be conducted with a minimum number of personnel in the immediate vicinity. The test will be conducted during daylight hours only.

7. **General Requirements**

MOC has researched this area and no high concentrations of H₂S was found. MOC will have on location and working all H₂S safety equipment before the top of the Capitan Reef formation.

Mewbourne Oil Company
BOP Schematic for
12 1/4" Hole

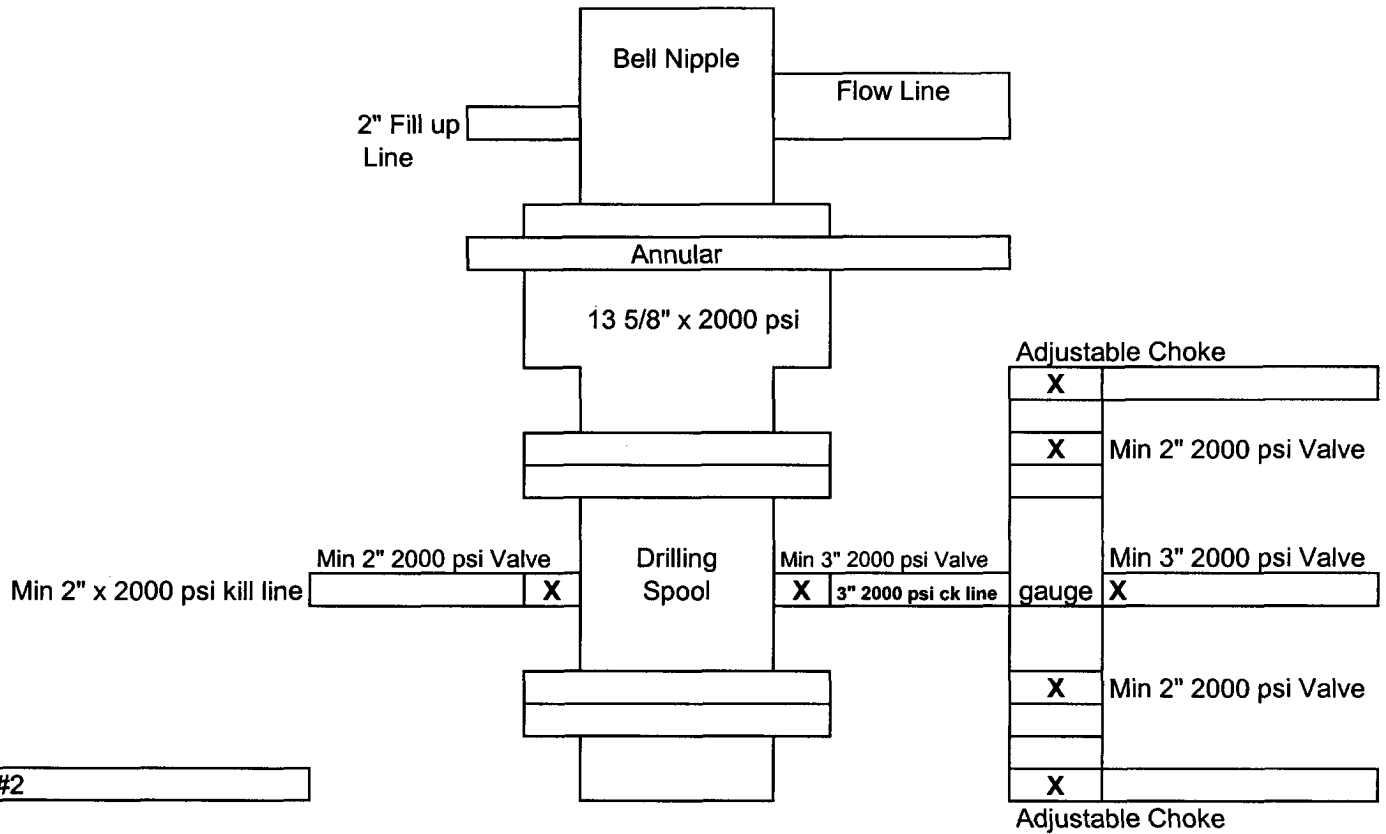


Exhibit #2

Mosley Canyon 33 St #1
Sec 33-T23S-R25E
1650' FSL & 990' FWL
Eddy County, NM

Mewbourne Oil Company
BOP Schematic for
8 3/4" or 7 7/8" Hole

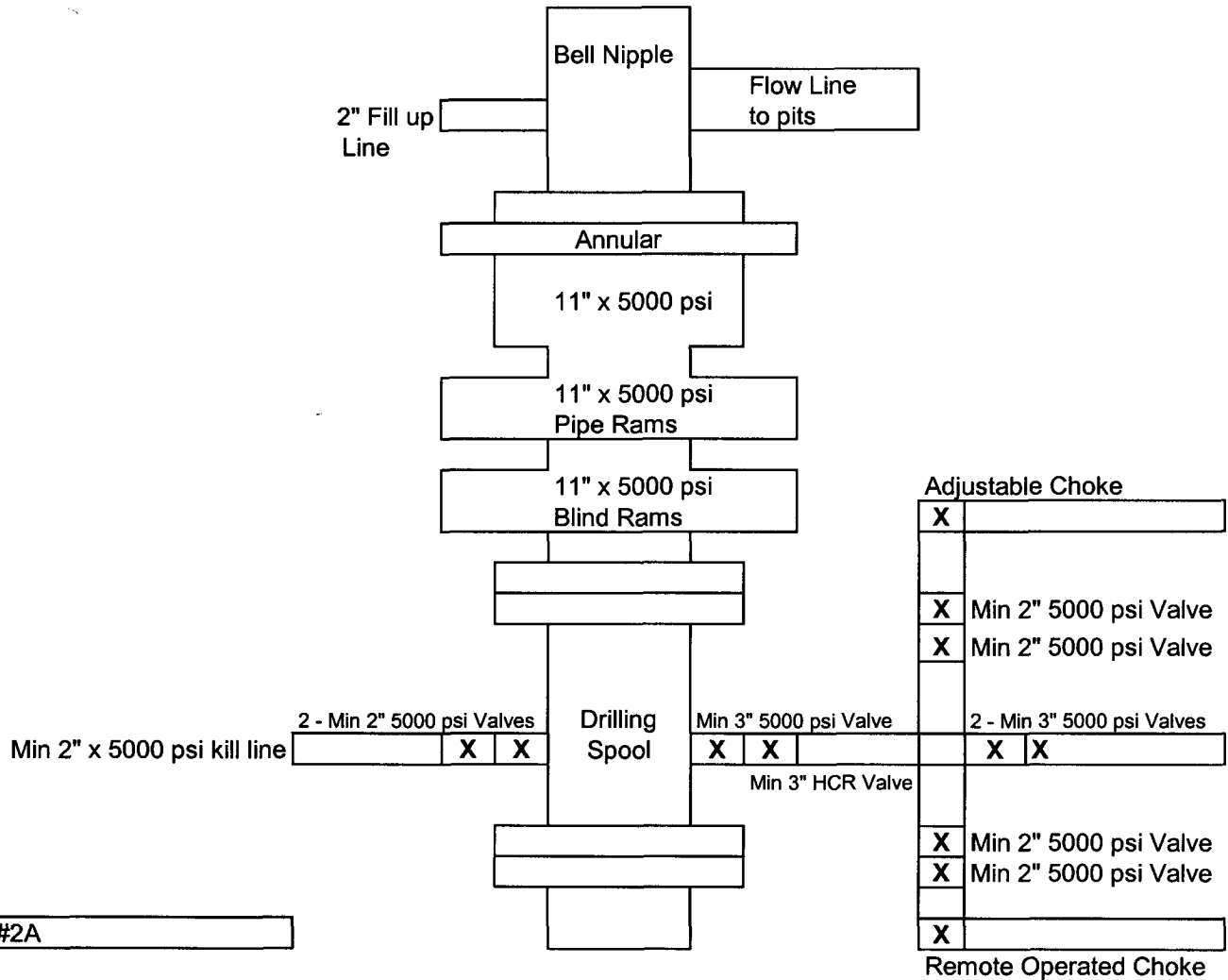
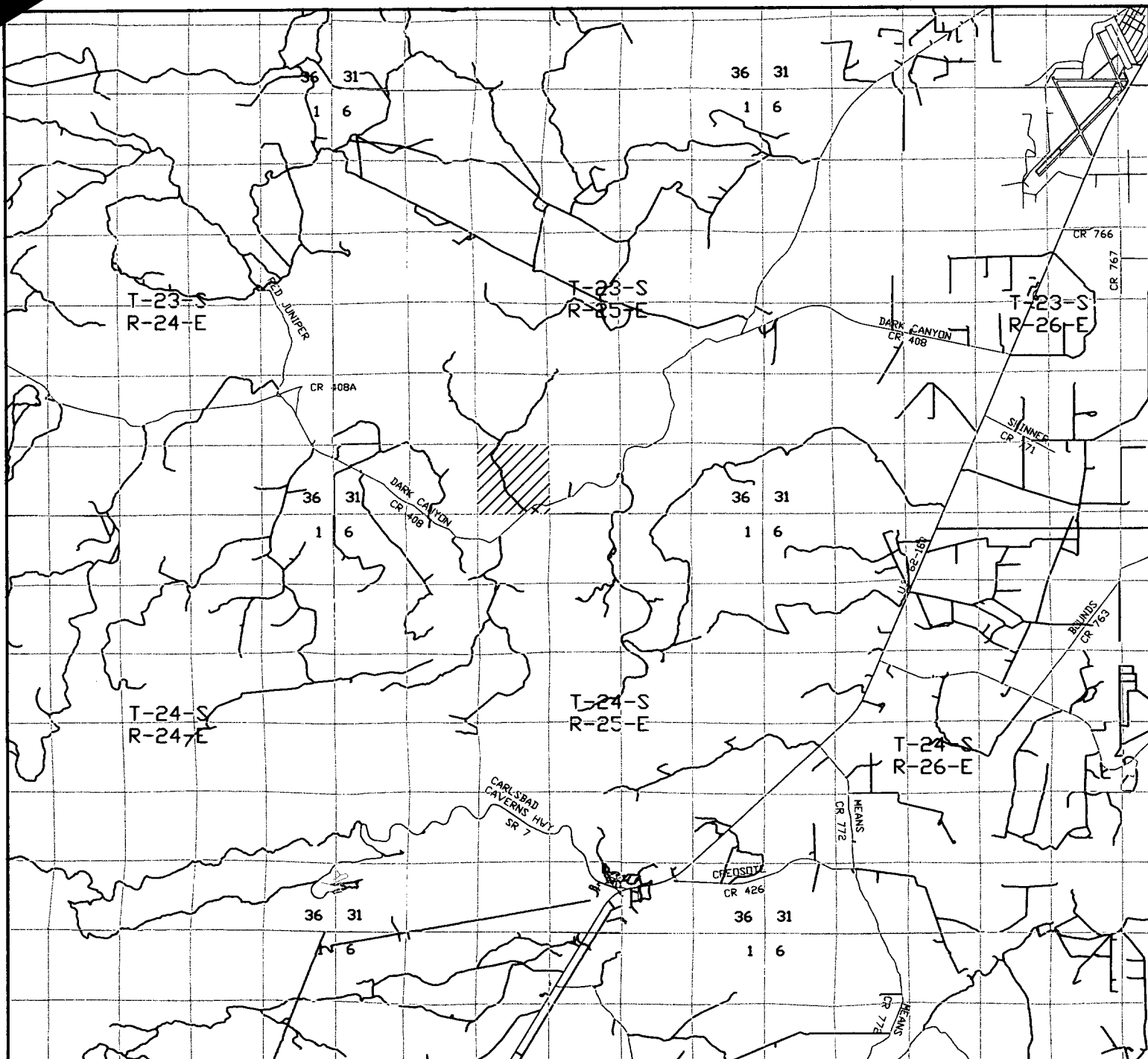


Exhibit #2A

Mosley Canyon 33 St #1
Sec 33-T23S-R25E
1650' FSL & 990' FWL
Eddy County, NM



MOSLEY CANYON "33" STATE #1
 Located 1650' FSL and 990' FWL
 Section 33, Township 23 South, Range 25 East,
 N.M.P.M., Eddy County, New Mexico.

EXHIBIT 3

basin
surveys
 focused on excellence
 in the oilfield

P.O. Box 1786
 1120 N. West County Rd.
 Hobbs, New Mexico 88241
 (505) 393-7316 - Office
 (505) 392-3074 - Fax
 basinsurveys.com

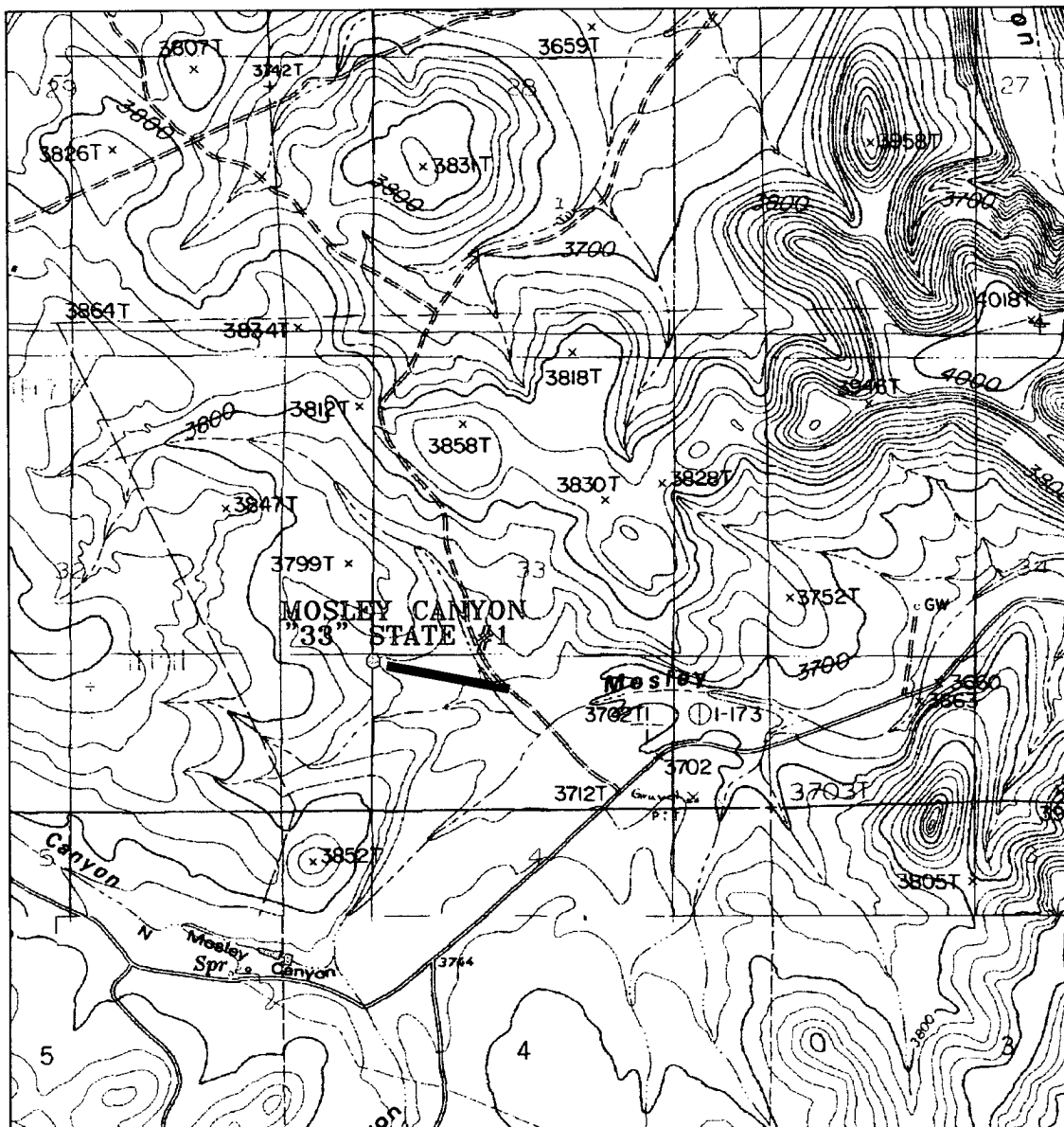
W.O. Number: 5460AA - KJG #7

Survey Date: 06-01-2005

Scale: 1" = 2 MILES

Date: 06-06-2005

MEWBOURNE
OIL CO.



PROP. LEASE ROAD TO THE MOSLEY CANYON "33" STATE #1
 Located 1650' FSL and 990' FWL
 Section 33, Township 23 South, Range 25 East,
 N.M.P.M., Eddy County, New Mexico.

Exhibit 3A

basin
surveys
 focused on excellence
 in the oilfield

P.O. Box 1786
 1120 N. West County Rd.
 Hobbs, New Mexico 88241
 (505) 393-7316 - Office
 (505) 392-3074 - Fax
 basinsurveys.com

W.O. Number: 5460BB - KJG #7

Survey Date: 06-01-2005

Scale: 1" = 2000'

Date: 06-06-2005

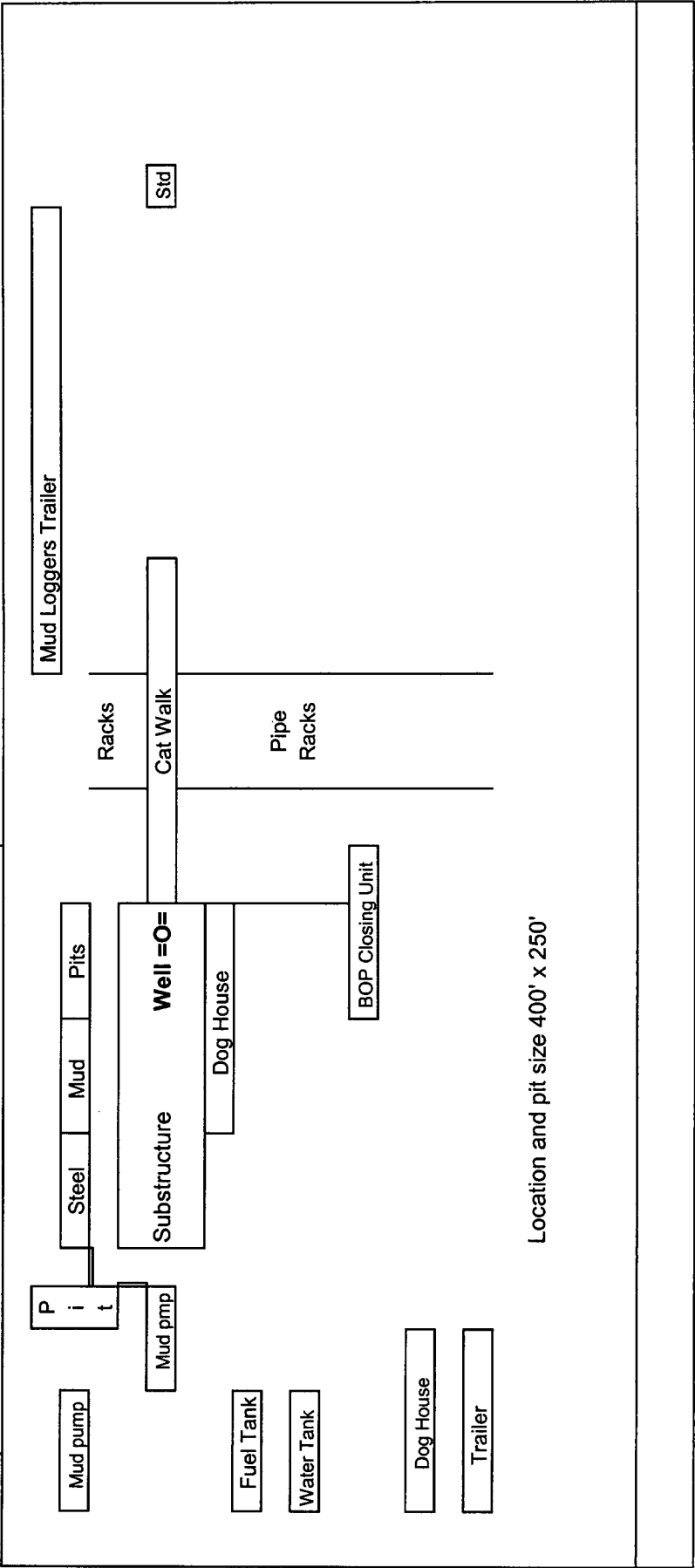
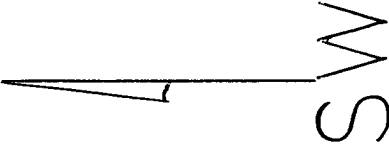
MEWBOURNE
OIL CO.

Mewbourne Oil Company

Exhibit # 5

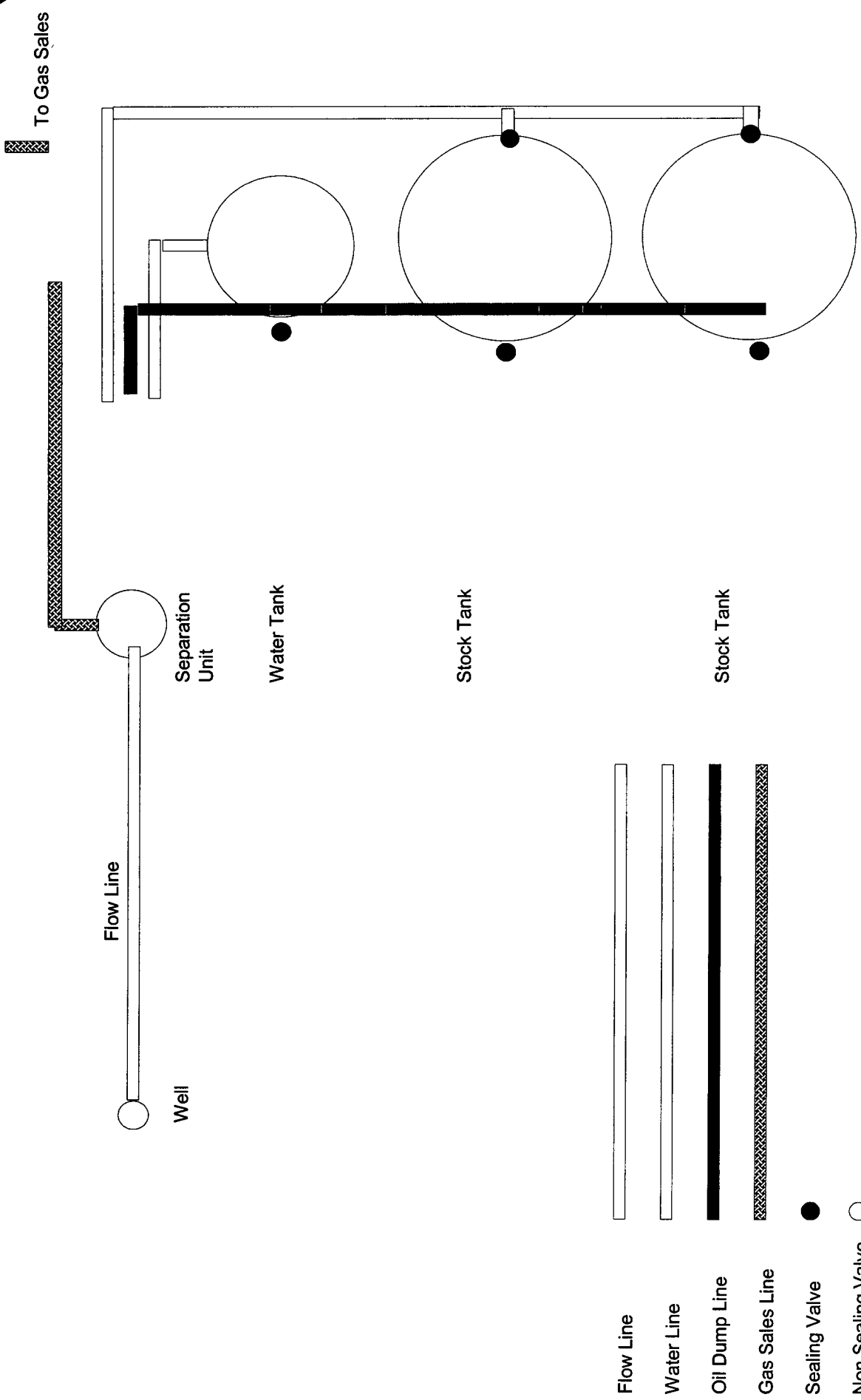
Well Name Mosley Canyon 33 St #1
Footages Sec 33-T23S-R25E
STR 1650' FSL & 990' FWL
County Eddy County
State New Mexico

Reserve Pit
150' x 150'



Rig Location Schematic

Proposed Production Facilities Schematic



Mewbourne Oil Company
Exhibit # 6
Proposed Production Facilities Schematic
Mosley Canyon 33 St #1
Sec 33-T23S-R25E
1650' FSL & 990' FWL
Eddy County, NM



NEW MEXICO ENERGY, MINERALS and NATURAL RESOURCES DEPARTMENT

BILL RICHARDSON

Governor

Joanna Prukop

Cabinet Secretary

Mark E. Fesmire, P.E.

Director

Oil Conservation Division

June 25, 2005

Mewbourne Oil Company

P.O. Box 5270

Hobbs, NM 88240

Attn: Ms. Kristi Young or To Whom It May Concern

**RE: APPLICATION FOR PERMIT TO DRILL
Mosley Canyon 33 State # 1
Section 33, T-23S-R-25-E, 1650' FSL & 990' FWL
(Surface Location) API # 30-015-34164
Eddy County, New Mexico**

Dear Kristi or To Whom It May Concern,

The application for permit to drill identified above has been filed with this office will need to have the following stipulation (in part) for approval:

Mewbourne Oil Company is to catch mud samples from the flow line in order to determine the chloride content of the drilling mud. Samples are to be taken from surface down to the setting of the intermediate casing setting depth of @ 2400'.

Results of these tests are to be submitted to our office and the Bureau of land Management.

Thank you for your assistance.

Sincerely,

Bryan G. Arrant

PES, District II Artesia NMOCD