

UNITED STATES
DEPARTMENT OF THE INTERIOR
BUREAU OF LAND MANAGEMENT

N.M. Oil Cons. DIV-Dist. 2
1301 W. Grand Avenue
Artesia, NM 88210

FORM APPROVED
Budget Bureau No. 1004-0135
Expires: March 31, 1993

5. Lease Designation and Serial No.
LC-028784 (B)

6. If Indian, Allottee or Tribe Name

SUNDRY NOTICES AND REPORTS ON WELLS

Do not use this form for proposals to drill or to deepen or reentry to a different reservoir.
Use "APPLICATION FOR PERMIT-" for such proposals

SUBMIT IN TRIPLICATE

1. Type of Well

☐ Oil Well ☒ Gas Well ☐ Other

2. Name of Operator

ConocoPhillips Company

3. Address and Telephone No.

4001 Penbrook St., Odessa, Texas 79761

4. Location of Well (Footage, Sec., T., R., M., or Survey Description)

198' FNL & 2201' FWL
Sec 30, T 18 S, R 30 E
Unit Letter C

RECEIVED
AUG 30 2005
OCD-ARTESIA

Grayburg Deep Unit

8. Well Name and No.

15

9. API Well No.

30-015-30300

10. Field and Pool, or Exploratory Area

Sand Tank (Morrow) 84872

11. County or Parish, State

Eddy, NM

12. CHECK APPROPRIATE BOX(S) TO INDICATE NATURE OF NOTICE, REPORT, OR OTHER DATA

TYPE OF SUBMISSION

☒ Notice of Intent

☐ Subsequent Report

☐ Final Abandonment Notice

TYPE OF ACTION

☒ Abandonment

☐ Recompletion

☐ Plugging Back

☐ Casing Repair

☐ Altering Casing

☐ Other

☐ Change of Plans

☐ New Construction

☐ Non-Routine Fracturing

☐ Water Shut-Off

☐ Conversion to Injection

☐ Dispose Water

(Note: Report results of multiple completion on Well Completion or Recompletion Report and Log form.)

13. Describe Proposed or Completed Operations (Clearly state all pertinent details, and give pertinent dates, including estimated date of starting any proposed work. If well is directionally drilled, give subsurface locations and measured and true vertical depths for all markers and zones pertinent to this work.)*

Well TA'D 7/03 with CIBP @ 10,660' with 35' cement on top

1. Tag CIBP @ 10625'

2. Circulate well with 9.5# plugging mud.

3. Spot 25 sks of cement 9,274'-9,174'.

4. Spot 25 sks of cement 4,566'-4,466'.

5. Spot 25 sks of cement 2,400'-2,300'. Woc & tag.

6. Perforate 5 1/2 @ 699'. Circulate 175 sks to surface.

7. Cut off wellhead and anchors 3' BGL. Cap well. Install dry hole marker.

SEE ATTACHED FOR
CONDITIONS OF APPROVAL

14. I hereby certify that the foregoing is true and correct

Signed

Title Agent

Date 08/25/05

(This space for Federal or State office use)

Approved by

(ORIG. SGD.) ALEXIS C. SWOBODA

Title

PETROLEUM ENGINEER

Date

AUG 26 2005

Conditions of approval, if any:



UNLOCK YOUR POTENTIAL™

August 24, 2005

**ConocoPhillips Company
Grayburg Deep Unit # 15
Eddy County, New Mexico**

Proposed Plugging Procedure

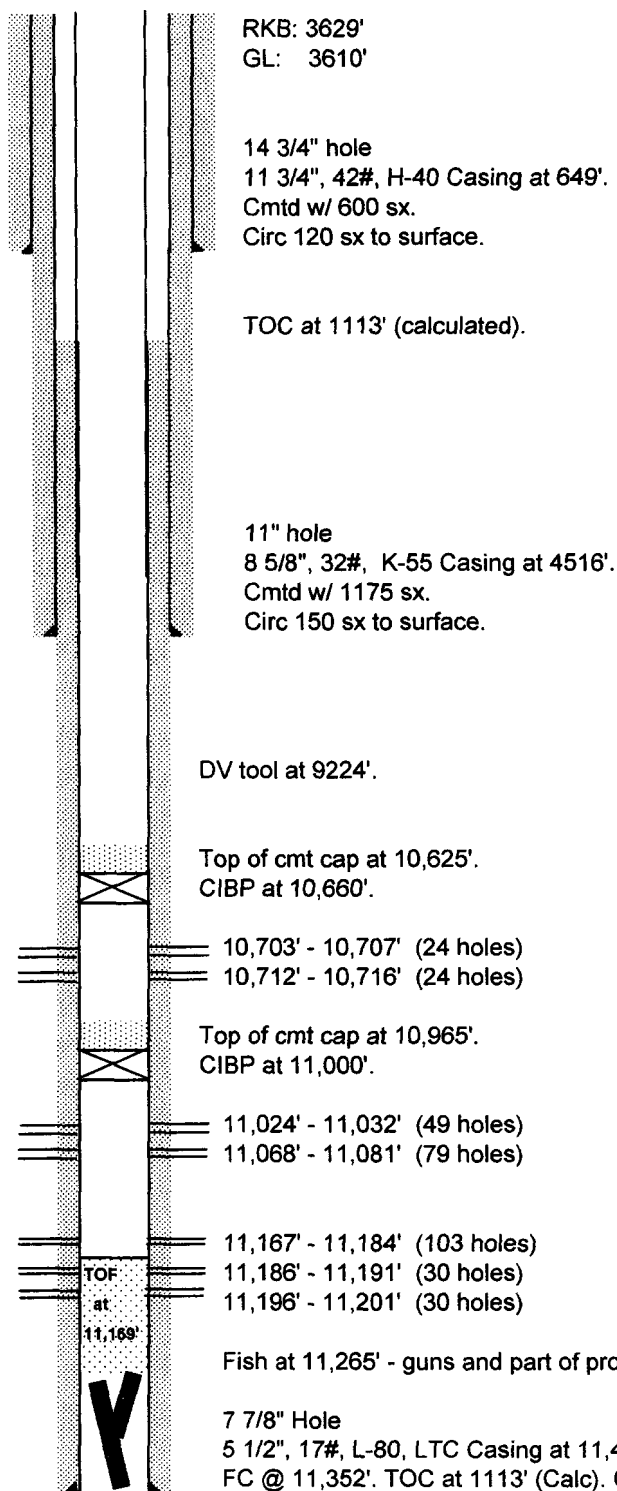
Notify BLM 48 hrs prior to move in.

Notify Digtess 48 hrs prior to move in.

1. Check wellhead PSI and flow down accordingly.
2. MIRU plugging equipment. ND wellhead NU BOP.
3. PU 2 3/8" workstring and tag CIBP @ 10,625'.
4. Circulate well with plugging mud (250 BBLS 100 sks).
5. PUH with tubing to 9,274'. Spot 25 sks of cement 9,274'-9,174'.
6. PUH with tubing to 4,566'. Spot 25 sks of cement 4,566'-4,466'.
7. POH with tubing LD excess.
8. RU wireline and perf @ 699'.
9. Establish circulation out 5 1/2 x 8 5/8 annulus. Circulate 175 sks of cement to surface.
10. Rig down plugging equipment.
11. Cut off wellhead and anchors 3' BGL. Cap well. Install dry hole marker.
12. Clean location.

ConocoPhillips Company - Permian Area

August 3, 2005



RKB: 3629'
GL: 3610'

14 3/4" hole
11 3/4", 42#, H-40 Casing at 649'.
Cmtd w/ 600 sx.
Circ 120 sx to surface.

TOC at 1113' (calculated).

11" hole
8 5/8", 32#, K-55 Casing at 4516'.
Cmtd w/ 1175 sx.
Circ 150 sx to surface.

DV tool at 9224'.

Top of cmt cap at 10,625'.
CIBP at 10,660'.

10,703' - 10,707' (24 holes)
10,712' - 10,716' (24 holes)

Top of cmt cap at 10,965'.
CIBP at 11,000'.

11,024' - 11,032' (49 holes)
11,068' - 11,081' (79 holes)

11,167' - 11,184' (103 holes)
11,186' - 11,191' (30 holes)
11,196' - 11,201' (30 holes)

Fish at 11,265' - guns and part of production tail pipe.

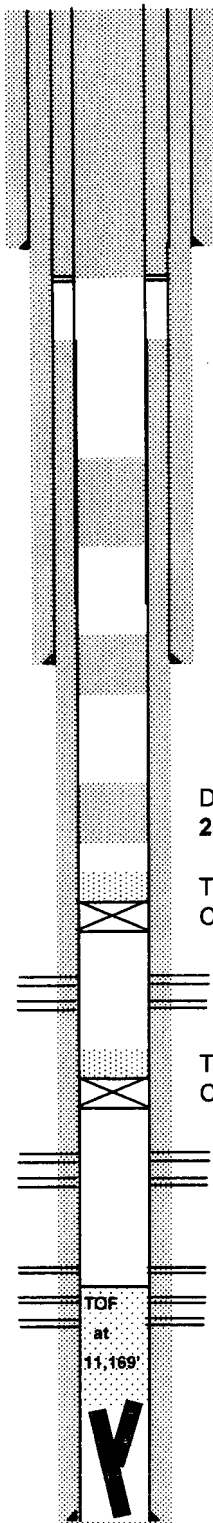
7 7/8" Hole
5 1/2", 17#, L-80, LTC Casing at 11,400'.
FC @ 11,352'. TOC at 1113' (Calc). Cmtd w/ 2050 sx.
1st Stage 650 sx. Circ 87 sx to pit. 2nd Stage 1400 sx (yield 1.27 cu.ft./sk).

PBTD: 10,625'
TD: 11,400'

Lease & Well No.: **Grayburg Deep Unit #15**
API Number: 30-015-30300
Wellhead: McEvoy "SL" 3000 psi
Well Category: Two
Area: New Mexico
Subarea: Maljamar
Legal Description: 198' FNL & 2201' FWL
Sec 30, T-17-S, R-30-E
Eddy County, New Mexico
Spudded: 08/14/98
Completed: 12/14/98

History:
12/98 Perf'd middle Morrow 11024-32', 11,068-81',
lower Morrow 11,167-11,184', 11,186-11,191',
11,196-11,201' w/ 6 spf (291 holes).
2/99 Attempted to frac lower Morrow with Alcofoam
& 15,000# bauxite. Communicated with annulus.
Est 6000-8,000# outside of wellbore.
4/03 Set CIBP at 11,000'. Spotted 35' (4 sx) cmt on
top of CIBP. Perf'd Morrow 10,703-10,707',
10,712-10,716' w/ 6 spf (48 holes). SI well w/
SITP 100 psi.
7/03 Set CIBP at 10,660'. Spotted 35' cmt on top of
CIBP. TA'd 7/17/03.

ConocoPhillips Company - Permian Area
 August 25, 2005
 Proposed PA Wellbore Diagram



RKB: 3629'
 GL: 3610'

14 3/4" hole
 11 3/4", 42#, H-40 Casing at 649'.
 Cmtd w/ 600 sx.
 Circ 120 sx to surface.
Perf & Circulate 175 sks
699'-Surface
 TOC at 1113' (calculated).

25 sks 2400'-2300' Tag

11" hole
 8 5/8", 32#, K-55 Casing at 4516'.
 Cmtd w/ 1175 sx.
 Circ 150 sx to surface.
25 sks 4566'-4466'

DV tool at 9224'.
25 sks 9274'-9174'

Top of cmt cap at 10,625'.
 CIBP at 10,660'.

10,703' - 10,707' (24 holes)
 10,712' - 10,716' (24 holes)

Top of cmt cap at 10,965'.
 CIBP at 11,000'.

11,024' - 11,032' (49 holes)
 11,068' - 11,081' (79 holes)

11,167' - 11,184' (103 holes)
 11,186' - 11,191' (30 holes)
 11,196' - 11,201' (30 holes)

Fish at 11,265' - guns and part of production tail pipe.

7 7/8" Hole
 5 1/2", 17#, L-80, LTC Casing at 11,400'.
 FC @ 11,352'. TOC at 1113' (Calc). Cmtd w/ 2050 sx.
 1st Stage 650 sx. Circ 87 sx to pit. 2nd Stage 1400 sx (yield 1.27 cu.ft./sk).

PBTD: 10,625'
 TD: 11,400'

Lease & Well No.:
 API Number:
 Wellhead:
 Well Category:
 Area:
 Subarea:
 Legal Description:

Grayburg 29 De
 30-015-300 O300
 McEvoy "S-SL"
 Two
 New Mexico
 Maljamar
 198' FNL & & 22
 Sec 30, T-17-S
 Eddy County,
 Spudded: 08/14/98
 Completed: 12/14/98

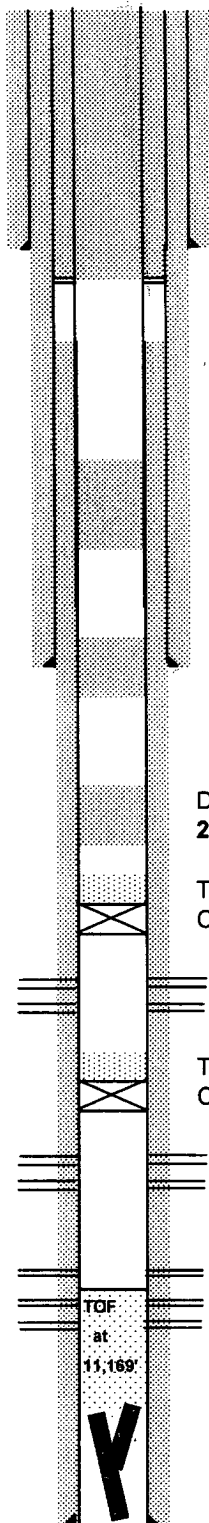
Plugging Procedure:

- Step 1 Tag and circulate well with salt gel
- Step 2 Spot 25 sks @ DV tool 9274'-9174'
- Step 3 Spot 25 sks 4566'-4466'
- Step 4 Spot 25 sks 2400'-2300' Tag Plug
- Step 5 Perf & Circ 175 sks 699'-Surface
- Note: if well doesn't circulate call BLM before
- Step 6 Cut off wellhead and anchors 3' 8" BG
 Install dry hole marker.

ConocoPhillips Company - Permian Area

August 25, 2005

Proposed PA Wellbore Diagram



RKB: 3629'
GL: 3610'

14 3/4" hole
11 3/4", 42#, H-40 Casing at 649'.
Cmtd w/ 600 sx.
Circ 120 sx to surface.
Perf & Circulate 175 sks
699'-Surface
TOC at 1113' (calculated).

25 sks 2400'-2300' Tag

11" hole
8 5/8", 32#, K-55 Casing at 4516'.
Cmtd w/ 1175 sx.
Circ 150 sx to surface.
25 sks 4566'-4466'

DV tool at 9224'.
25 sks 9274'-9174'

Top of cmt cap at 10,625'.
CIBP at 10,660'.

10,703' - 10,707' (24 holes)
10,712' - 10,716' (24 holes)

Top of cmt cap at 10,965'.
CIBP at 11,000'.

11,024' - 11,032' (49 holes)
11,068' - 11,081' (79 holes)

11,167' - 11,184' (103 holes)
11,186' - 11,191' (30 holes)
11,196' - 11,201' (30 holes)

TOF
at
11,169'

Fish at 11,265' - guns and part of production tail pipe.

7 7/8" Hole
5 1/2", 17#, L-80, LTC Casing at 11,400'.
FC @ 11,352'. TOC at 1113' (Calc). Cmtd w/ 2050 sx.
1st Stage 650 sx. Circ 87 sx to pit. 2nd Stage 1400 sx (yield 1.27 cu.ft./sk).

PBTD: 10,625'
TD: 11,400'

Lease & Well No.:
API Number:
Wellhead:
Well Category:
Area:
Subarea:
Legal Description:

Grayburg Deep Unit #15
30-015-30300
McEvoy "SL" 3000 psi
Two
New Mexico
Maljamar
198' FNL & 2201' FWL
Sec 30, T-17-S, R-30-E
Eddy County, New Mexico

Spudded: 08/14/98
Completed: 12/14/98

Plugging Procedure:

- Step 1 Tag and circulate well with salt gel
- Step 2 Spot 25 sks @ DV tool 9274'-9174"
- Step 3 Spot 25 sks 4566'-4466'
- Step 4 Spot 25 sks 2400'-2300' Tag Plug
- Step 5 Perf & Circ 175 sks 699'-Surface
- Note: if well doesn't circulate call BLM before proceeding
- Step 6 Cut off wellhead and anchors 3' BGL. Cap well.
Install dry hole marker.