

DISTRICT I
1625 N. French Dr., Hobbs, NM 88240

DISTRICT II
1301 W. Grand Avenue, Artesia, NM 88210

DISTRICT III
1000 Rio Brazos Rd., Aztec, NM 87410

DISTRICT IV
1220 S. St. Francis Dr., Santa Fe, NM 87505

State of New Mexico
Energy, Minerals and Natural Resources Department

OIL CONSERVATION DIVISION
1220 South St. Francis Dr.
Santa Fe, New Mexico 87505

Form C-102
Revised July 18, 2010
Submit one copy to appropriate District Office

RECEIVED
NOV 27 2012
NMOCD ARTESIA

WELL LOCATION AND ACREAGE DEDICATION PLAT

☐ AMENDED REPORT

| | | |
|-----------------------------------|---|--|
| API Number 30-015-39732 | Pool Code 96046 | Pool Name Poker lake NW (Delaware) |
| Property Code 306402 | Property Name POKER LAKE UNIT | Well Number 340H |
| OGRID No. 260737 | Operator Name BOPCO, L.P. | Elevation 3424' |

Surface Location

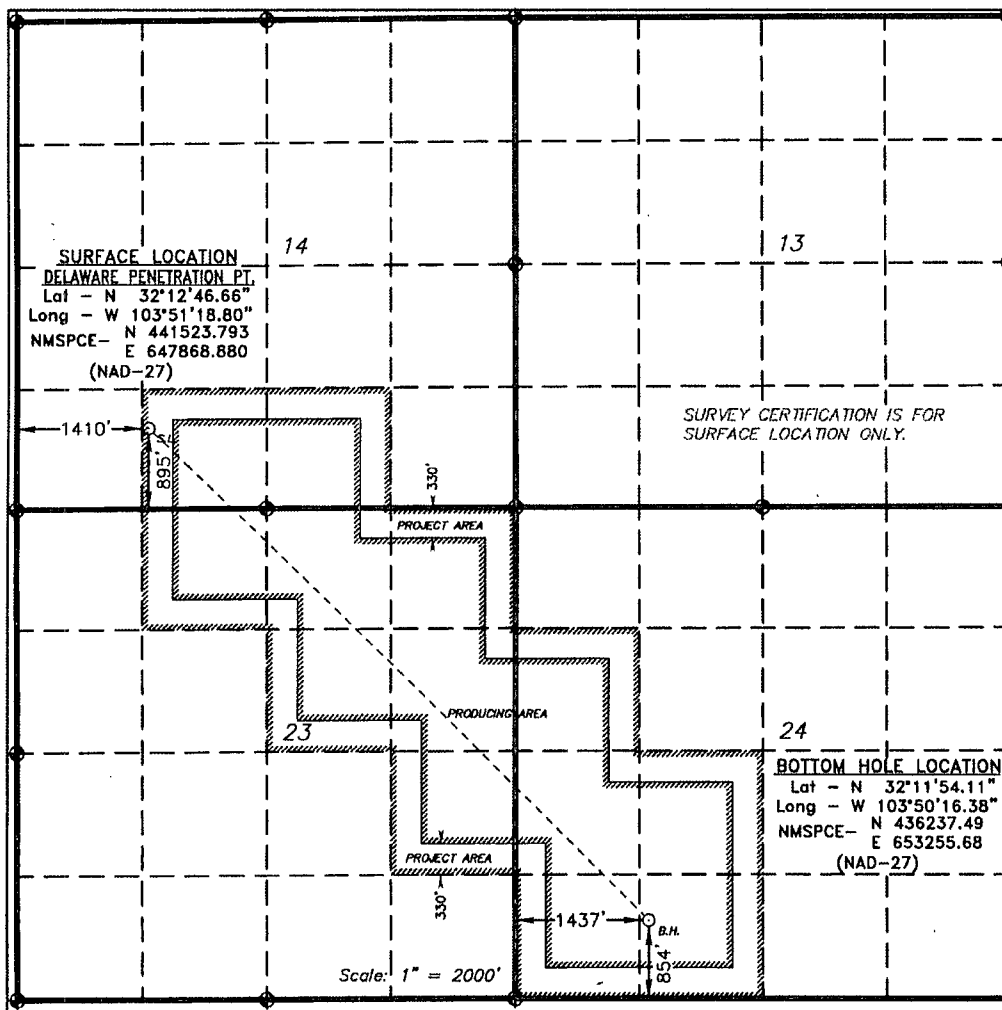
| UL or lot No. | Section | Township | Range | Lot Idn | Feet from the | North/South line | Feet from the | East/West line | County |
|---------------|---------|----------|-------|---------|---------------|------------------|---------------|----------------|--------|
| N | 14 | 24 S | 30 E | | 895 | SOUTH | 1410 | WEST | EDDY |

Bottom Hole Location If Different From Surface

| UL or lot No. | Section | Township | Range | Lot Idn | Feet from the | North/South line | Feet from the | East/West line | County |
|---------------|---------|----------|-------|---------|---------------|------------------|---------------|----------------|--------|
| N | 24 | 24 S | 30 E | | 854 | SOUTH | 1437 | WEST | EDDY |

| | | | |
|-------------------------------|-----------------|--------------------|-----------|
| Dedicated Acres 520 | Joint or Infill | Consolidation Code | Order No. |
|-------------------------------|-----------------|--------------------|-----------|

NO ALLOWABLE WILL BE ASSIGNED TO THIS COMPLETION UNTIL ALL INTERESTS HAVE BEEN CONSOLIDATED
OR A NON-STANDARD UNIT HAS BEEN APPROVED BY THE DIVISION



OPERATOR CERTIFICATION

I hereby certify that the information contained herein is true and complete to the best of my knowledge and belief, and that this organization either owns a working interest or unleased mineral interest in the land including the proposed bottom hole location or has a right to drill this well at this location pursuant to a contract with an owner of such a mineral or working interest, or to a voluntary pooling agreement or a compulsory pooling order heretofore entered by the division.

Tracie J Cherry 11-21-12
Signature Date
Tracie J Cherry
Printed Name
ticherry@basspet.com
Email Address

SURVEYOR CERTIFICATION

I hereby certify that the well location shown on this plat was plotted from field notes of actual surveys made by me or under my supervision, and that the same is true and correct to the best of my belief.

MAR 17 2013
Date Surveyed
Signature & Seal of Professional Surveyor
W.O. 111202333
Certificate No. Gary L. Jones 7977
BASIN SURVEYS 24268