

12-1193

Form 3160-3  
(March 2012)

UNITED STATES  
DEPARTMENT OF THE INTERIOR  
BUREAU OF LAND MANAGEMENT

OCD Artesia

FORM APPROVED  
OMB No. 1004-0137  
Expires October 31, 2014

APPLICATION FOR PERMIT TO DRILL OR REENTER

5. Lease Serial No.  
NMNM2747

6. If Indian, Allottee or Tribe Name

705  
1/7/2013

1a. Type of work: ☒ DRILL ☐ REENTER

7. If Unit or CA Agreement, Name and No.

1b. Type of Well: ☒ Oil Well ☐ Gas Well ☐ Other ☒ Single Zone ☐ Multiple Zone

8. Lease Name and Well No.  
Jackson B 53

< 2351 >

2. Name of Operator Burnett Oil Co., Inc.

9. API Well No.

30-015-46942

3a. Address 801 Cherry Street, Suite 1500  
Fort Worth, Texas 76102

3b. Phone No. (include area code)  
817-332-5108 x6326

10. Field and Pool, or Exploratory  
Loco Hills Glorieta Yeso

< 96831 >

4. Location of Well (Report location clearly and in accordance with any State requirements.)

At surface 440' FSL, 740 FWL, Unit M

At proposed prod. zone 330' FSL, 990' FWL, Unit M

11. Sec., T. R. M. or Blk. and Survey or Area  
Section 1, T. 17S, R. 30E

14. Distance in miles and direction from nearest town or post office\*  
Approximately 2 Miles North of Loco Hills, NM

12. County or Parish  
Eddy

13. State  
NM

15. Distance from proposed\* 440'  
location to nearest  
property or lease line, ft.  
(Also to nearest drig. unit line, if any)

16. No. of acres in lease  
220  
1199.67

17. Spacing Unit dedicated to this well  
40

18. Distance from proposed location\* 425'  
to nearest well, drilling, completed,  
applied for, on this lease, ft.

19. Proposed Depth  
6100' TVD  
6144' MD 6114'

20. BLM/BIA Bond No. on file.  
NM-B000197

21. Elevations (Show whether DF, KDB, RT, GL, etc.)  
3744' GL

22. Approximate date work will start\*  
12/28/2012

23. Estimated duration  
30 days

24. Attachments

The following, completed in accordance with the requirements of Onshore Oil and Gas Order No.1, must be attached to this form:

1. Well plat certified by a registered surveyor.

2. A Drilling Plan.

3. A Surface Use Plan (if the location is on National Forest System Lands, the  
SUPO must be filed with the appropriate Forest Service Office).

4. Bond to cover the operations unless covered by an existing bond on file (see  
Item 20 above).

5. Operator certification

6. Such other site specific information and/or plans as may be required by the  
BLM.

25. Signature

Leslie M. Garvis

Name (Printed/Typed)  
Leslie M. Garvis

Date  
09/26/2012

Title

Regulatory Coordinator

Approved by (Signature) /s/George MacDonell

Name (Printed/Typed)

Date JAN 7 2013

Title

FIELD MANAGER

Office

CARLSBAD FIELD OFFICE

Application approval does not warrant or certify that the applicant holds legal or equitable title to those rights in the subject lease which would entitle the applicant to  
conduct operations thereon.

Conditions of approval, if any, are attached.

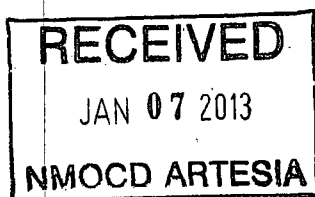
APPROVAL FOR TWO YEARS

Title 18 U.S.C. Section 1001 and Title 43 U.S.C. Section 1212, make it a crime for any person knowingly and willfully to make to any department or agency of the United  
States any false, fictitious or fraudulent statements or representations as to any matter within its jurisdiction.

(Continued on page 2)

\*(Instructions on page 2)

Roswell Controlled Water Basin



Approval Subject to General Requirements  
& Special Stipulations Attached

SEE ATTACHED FOR  
CONDITIONS OF APPROVAL

DISTRICT I  
1625 N. French Dr., Hobbs, NM 88240  
Phone (505) 393-6161 Fax: (505) 393-0720

DISTRICT II  
811 S. First St., Artesia, NM 88210  
Phone (505) 748-1283 Fax: (505) 748-9720

DISTRICT III  
1000 Rio Brazos Rd., Aztec, NM 87410  
Phone (505) 334-6178 Fax: (505) 334-6170

DISTRICT IV  
1220 S. St. Francis Dr., Santa Fe, NM 87505  
Phone (505) 476-3400 Fax: (505) 476-3462

State of New Mexico  
Energy, Minerals and Natural Resources Department

Form C-102  
Revised August 1, 2011

Submit one copy to appropriate  
District Office

OIL CONSERVATION DIVISION

1220 South St. Francis Dr.  
Santa Fe, New Mexico 87505

WELL LOCATION AND ACREAGE DEDICATION PLAT

☐ AMENDED REPORT

API Number <b>30-015-40942</b>	Pool Code 96831	Pool Name CEDAR LAKE GLORIETA YESO
Property Code 2391	Property Name JACKSON B	Well Number 53
OGRID No. 03080	Operator Name BURNETT OIL COMPANY, INC.	Elevation 3744'

Surface Location

UL or lot No.	Section	Township	Range	Lot Idn	Feet from the	North/South line	Feet from the	East/West line	County
M	1	17 S	30 E		440	SOUTH	740	WEST	EDDY

Bottom Hole Location If Different From Surface

UL or lot No.	Section	Township	Range	Lot Idn	Feet from the	North/South line	Feet from the	East/West line	County
M	1	17 S	30 E		330	SOUTH	990	WEST	EDDY

Dedicated Acres	Joint or Infill	Consolidation Code	Order No.
40			

NO ALLOWABLE WILL BE ASSIGNED TO THIS COMPLETION UNTIL ALL INTERESTS HAVE BEEN CONSOLIDATED  
OR A NON-STANDARD UNIT HAS BEEN APPROVED BY THE DIVISION

<p><b>SURFACE LOCATION</b> Lat - N 32.857371711° Long - W 103.931055717° NMSPC - N 675858.393 E 623530.049 (NAD-27)</p>	<p><b>PROPOSED BOTTOM HOLE LOCATION</b> Lat - N 32.857067537° Long - W 103.930241328° NMSPC - N 675748.685 E 623780.553 (NAD-27)</p>	<p><b>OPERATOR CERTIFICATION</b> I hereby certify that the information contained herein is true and complete to the best of my knowledge and belief, and that this organization either owns a working interest or unleased mineral interest in the land including the proposed bottom hole location or has a right to drill this well at this location pursuant to a contract with an owner of such a mineral or working interest, or to a voluntary pooling agreement or a compulsory pooling order heretofore entered by the division.</p> <p><i>Leslie M. Garvis</i> 9/26/12 Signature Date Leslie M. Garvis Printed Name lgarvis@burnettoil.com Email Address</p> <p><b>SURVEYOR CERTIFICATION</b> I hereby certify that the well location shown on this plat was plotted from field notes of actual surveys made by me or under my supervision and that the same is true and correct to the best of my belief.</p> <p>SEP 26 2012 Date Surveyed Signature Seal of Professional Surveyor 7977 Certificate No. Gary L. Jones 7977 BASIN SURVEYS 27212</p>
---	--	--



## BURNETT OIL Co., INC.

### FINAL CERTIFICATION MEMO

I hereby certify that I, or persons under my direct supervision, have inspected the proposed drill site and access road proposed herein; that I am familiar with the conditions that presently exist; that I have full knowledge of State and Federal laws applicable to this operation; that the statements made in this APD package are, to the best of my knowledge, true and correct, and that the work associated with the operations proposed herein will be performed in conformity with this APD package and the terms and conditions under which it is approved. I also certify that Burnett Oil Co. Inc. is responsible for the operations conducted under this application. These statements are subject to the provisions of 18 U.S.C. 1001 for the filing of false statements. Executed this 10<sup>th</sup> day of Sept 2012.

Signed: Mark A. Jacoby

Printed Name: Mark A. Jacoby

Position: VP of Production, Permian Basin

Company: Burnett Oil Co., Inc.

Address: 801 Cherry Street, Suite 1500, Unit #9, Fort Worth, Texas 76108

Telephone: 817.332.5108

Email: [mjacob@burnettoil.com](mailto:mjacoby@burnettoil.com)



## BURNETT OIL CO., INC.

### MASTER DEVELOPMENT PLAN ALL VERTICAL LOCO HILLS & CEDAR LAKE GLORIETA YESO WELLS

#### 1. Geological Name of Surface Formation with Estimated Depth:

<u>Geological Name</u>	<u>Estimate Top</u>	<u>Anticipated Fresh Water, Oil or Gas</u>
a. Alluvium	Surface	Fresh Water, Sand
b. Anhydrite	352'	
c. Salt	568'	
d. Base Salt	1331'	
e. Yates	1496'	
f. Seven Rivers	1760'	Oil
g. Queen	2384'	Oil
h. Grayburg	2796'	Oil
i. San Andres	3103'	Oil
j. Glorieta	4543'	Oil
k. Yeso	4599'	Oil
l. Total Depth	Refer to APD	

No other formations are expected to yield oil, gas or fresh water in measurable volumes. Deepest water is expected to be above 400'. We will set 10-3/4" casing @ approx. +/- 520' in the Anhydrite, above the salt and circulate cement to surface.

We will isolate the oil zones by running 7" casing to total depth and circulating cement to surface.

#### 2. Casing Program: (ALL CASING WILL BE NEW API APPROVED MATERIAL.)

(MW = 10 PPG IN DESIGN FACTOR CALCULATIONS.)

##### a. Design Safety Factors:

<u>Type</u>	<u>Hole Size</u>	<u>Interval</u>	<u>OD Csg</u>	<u>Weight</u>	<u>Collar</u>	<u>Grade</u>	<u>Collapse Design Factor</u>	<u>Burst Design Factor</u>	<u>Tension Design Factor</u>
Conductor	24"	0'-90'	16"	Contractor Discretion			---	---	---
Surface	14-3/4"	0' - 520'	10-3/4"	32.75#	ST & C	H40	1.125	1.00	1.80
Production	8-3/4"	0' - TD	7"	23.00#	LT & C	J55	*1.125	1.00	1.80

**MASTER DEVELOPMENT PLAN  
ALL VERTICAL LOCO HILLS & CEDAR LAKE GLORIETA YESO WELLS**

\* 500' of fresh water gradient (.433 psi/ft) fluid will be maintained inside casing to keep SF 1.125. We will assure that the casing will be kept liquid filled in order to meet the SF collapse standard.

b. Surface Casing Info

The proposed casing setting depth is 520' based on the attached cross sections which show the estimated top of the rustler and top of salt (Exhibits H-J). Drilling times will be plotted to find the hard section just above the salt. A mud logger will be on location to evaluate drill and cutting samples as long as circulation is maintained. If salt is penetrated, it will be obvious by the sudden increase in water salinity and surface casing will then be set above the top of salt. Our highly experienced drilling personnel has drilled many wells in this area and is able to easily identify the hard streak on the top of the salt.

3. Cementing Program (Note Yields and DV Tool Depth if Multiple Stage.)

BLM to be notified prior to all cementing and tag operations in order to observe the operation if desired.

a. 10-3/4" Surface Cement to surface

- Lead with 150 sx Class C thix. cement + 10#/sk Cal-Seal 60 (Accelerator), +10#/sx LCM, 1% CaCl, 0.125#/sk Poly-E-Flake (LC), 14.2 ppg, 1.67 CF/Sk Yield.
- Tail with 250 sks Class C cement + 2% CaCl. 14.2 ppg, 1.35 CF/Sx yield. TOC Surface.  
**Excess cement 100%.**

See  
COA

If cement does not circulate to surface, BLM will be notified of same, plus the plans to bring the cement to surface so BLM may witness tagging and cementing. If surface pressures when circulating indicate cement is low in the annulus, temperate survey data will be reviewed with BLM representative for recommendation on how to determine TOC.

b. 7" Production Casing

**Stage 1 Cement:** 550 sks VERSACEM – C (50:50 Poz (Fly Ash):Class C cement + 2% Bentonite) + 0.4% LAP-1 (FLC) + 0.3 % CFR-3 (Disp) + .025 lb/sk D-Air 5000 + 3 lb/sx Kol-Seal (LC) + 0.125 lb/sk Poly-E-Flake (LC) . 14.2 ppg, Yield 1.28 CF/Sx. **DV @ approx. 2600'. 30% excess cement.**

**Stage 2 Cement:** Lead with 525 sks/ ECONOCEM (35:65) Poz (Fly Ash):Class C cement + 6% Bentonite) + .125 lbs/sx Poly-E-Flake (LC) + 2% CaCl, , 12.7 ppg, Yield 1.87 CF/Sx. Tail with 100 sx Class C + 2% CaCl. 14.8 ppg, Yield 1.32 CF/sx, TOC Surface. 140% excess cement.

The above cement volumes may be revised pending the caliper measurement from the open hole logs. **Casing/cementing design is to bring cement to the surface.**

4. Pressure Control Equipment:

The blowout prevention equipment (BOPE) shown in Exhibits K & L will consist of a 2000 PSI Hydril Unit (annular) with hydraulic closing equipment. The equipment will comply with Onshore Order #2 and will be tested to 50% of rated working pressure (RWP), and maintained for at least ten (10) minutes. The 10-3/4" drilling head will be installed on the surface casing and in use continuously until total depth is reached. An independent testing company will be used for the testing. Other

**MASTER DEVELOPMENT PLAN  
ALL VERTICAL LOCO HILLS & CEDAR LAKE GLORIETA YESO WELLS**

accessory BOP equipment will include a Kelly cock, floor safety valve, choke lines and choke manifold having 2000 PSI WP rating.

**5. Auxiliary Well Control and Monitoring Equipment:**

- a. A Kelly cock will be in the drill string at all times.
- b. A full opening drill pipe stabbing valve with the appropriate connections on the rig floor at all times.
- c. Hydrogen Sulfide detection and breathing equipment will be installed and in operation at drilling depth of 1800' (which is more than 500' above top of Grayburg) until 7" casing is cemented.
- d. An H2S compliance package will be on all sites while drilling.

**6. Proposed Mud Circulation System**

<u>Depth</u>	<u>Mud Wt</u>	<u>Visc</u>	<u>Fluid Loss</u>	<u>Type System</u>
0' - 520'	8.6 - 9.5			Fresh Water
520' - TD' MD	10.0 max			Brine Water

**The necessary mud products for weight addition and fluid loss control will be on location at all times.**

**7. Logging, Coring and Testing program:** *See COA*

- a. Any drill stem tests will be based on geological sample shows and planned before spudding.
- b. The open hole electrical logging program will be:
  1. Total depth to 1000': Dual Laterolog-Micro Laterolog with Compensated Neutron, Spectral Density log with Spectral Gamma Ray and Caliper.
  2. Total depth to Surface: Compensated Neutron with Spectral Gamma Ray.
  3. Coring program will be planned and submitted on a well by well basis.
  4. Additional testing will be done subsequent to setting the 7" production casing. The specific intervals will be based on log evaluation, geological sample shows and drill stem tests.

**8. Potential Hazards:**

No abnormal pressures or temperatures are expected. Lost circulation is expected in the surface hole and not expected in production. Water flows can occur periodically at various depths in the production hole. All personnel will be familiar with the safe operation of the equipment being used to drill this well. The maximum anticipated bottom hole pressure is 2734#. This is based upon the following formula of  $.445 \times \text{BH ft. estimate}$ . The anticipated bottom hole temperature is 105°F. This is based upon logs of drilled wells surrounding this well.

There is known H2S in this area. Refer to the attached H2S plan for details.

**MASTER DEVELOPMENT PLAN  
ALL VERTICAL LOCO HILLS & CEDAR LAKE GLORIETA YESO WELLS**

**9. Anticipated Start Date and Duration of Operation**

Road and location construction will begin after BLM has approved the APD and has approved the start of the location work. Anticipated spud date will be as soon as the location building work has been completed and the drilling rig is available to move to the location. Move in and drilling is expected to take approximately 14 days. If production casing is run, an additional 60 days would be required to complete the well and install the necessary surface equipment (pumping unit, electricity, flowline and storage facility) to place the well on production.

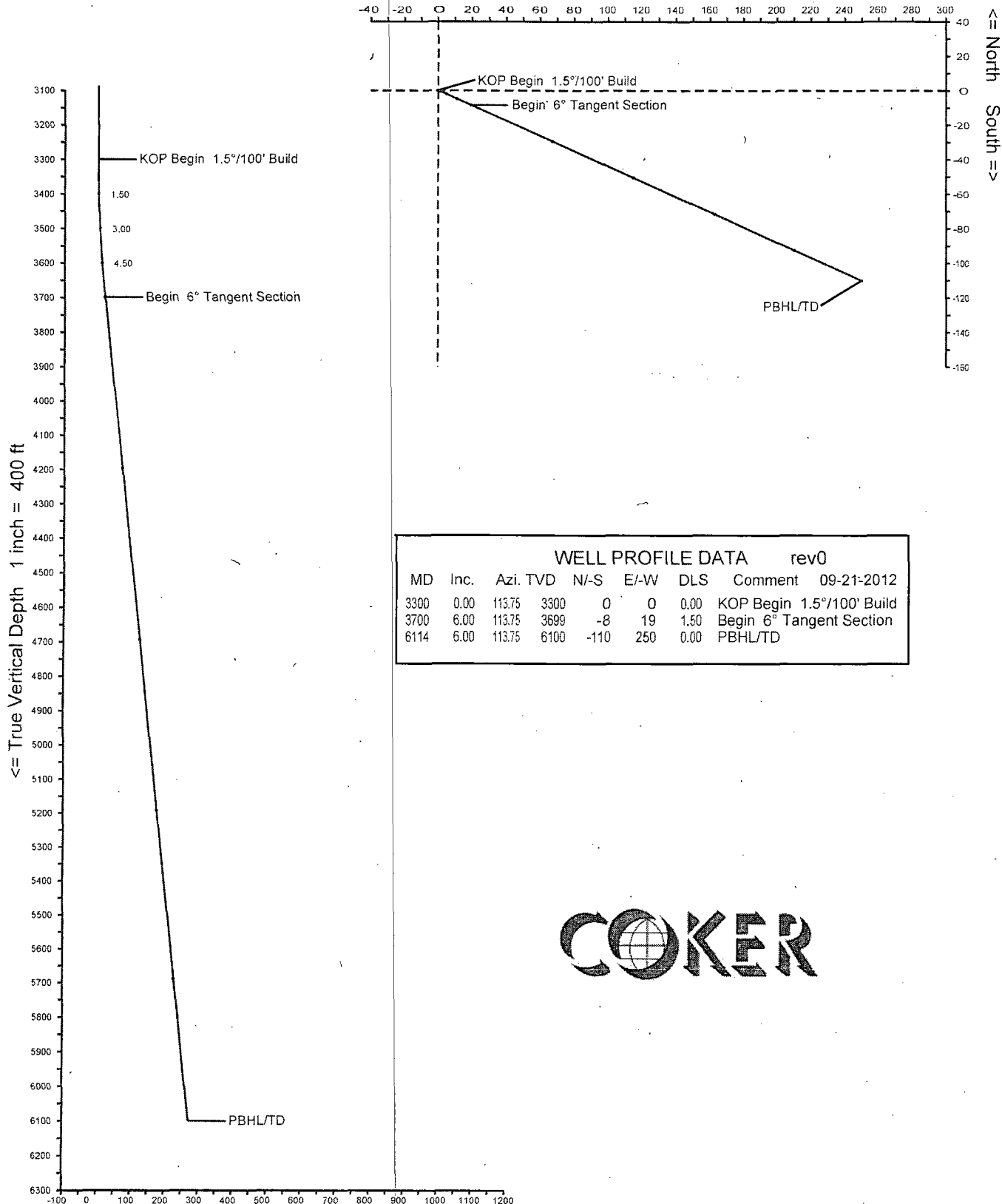
# EXHIBIT G-1

## Burnett Oil Company, Inc

### Jackson B 53

Eddy County, New Mexico

<= West East => 1 inch = 80 ft



WELL PROFILE DATA rev0									
MD	Inc.	Azi.	TVD	N-S	E-W	DLS	Comment	09-21-2012	
3300	0.00	113.75	3300	0	0	0.00	KOP Begin 1.5°/100' Build		
3700	6.00	113.75	3699	-8	19	1.50	Begin 6° Tangent Section		
6114	6.00	113.75	6100	-110	250	0.00	PBHL/TD		

**COKER**

Vertical Section on 113.75 deg azimuth with reference 0.00 N, 0.00 E



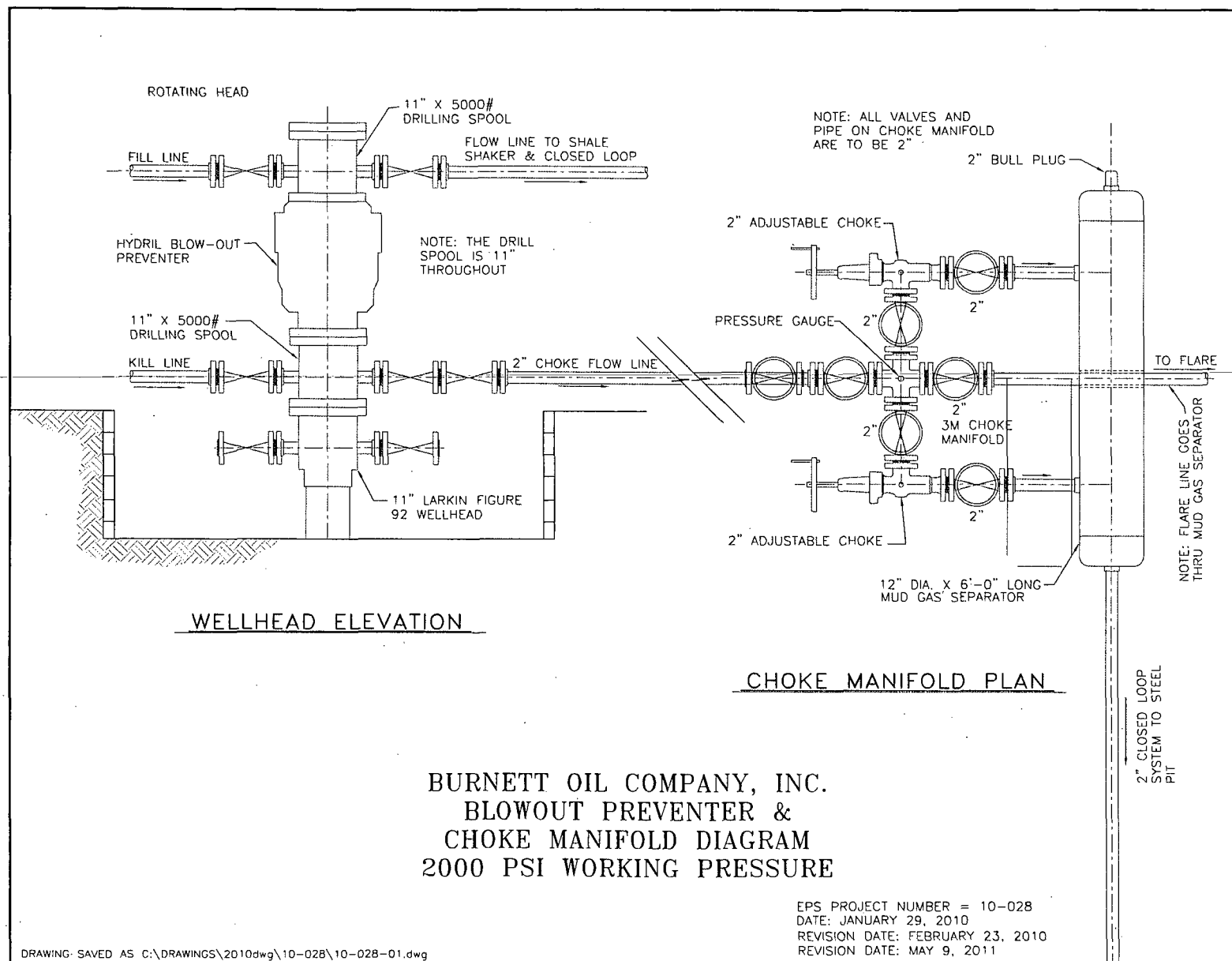
# EXHIBIT G-2

## Coker Energy Services

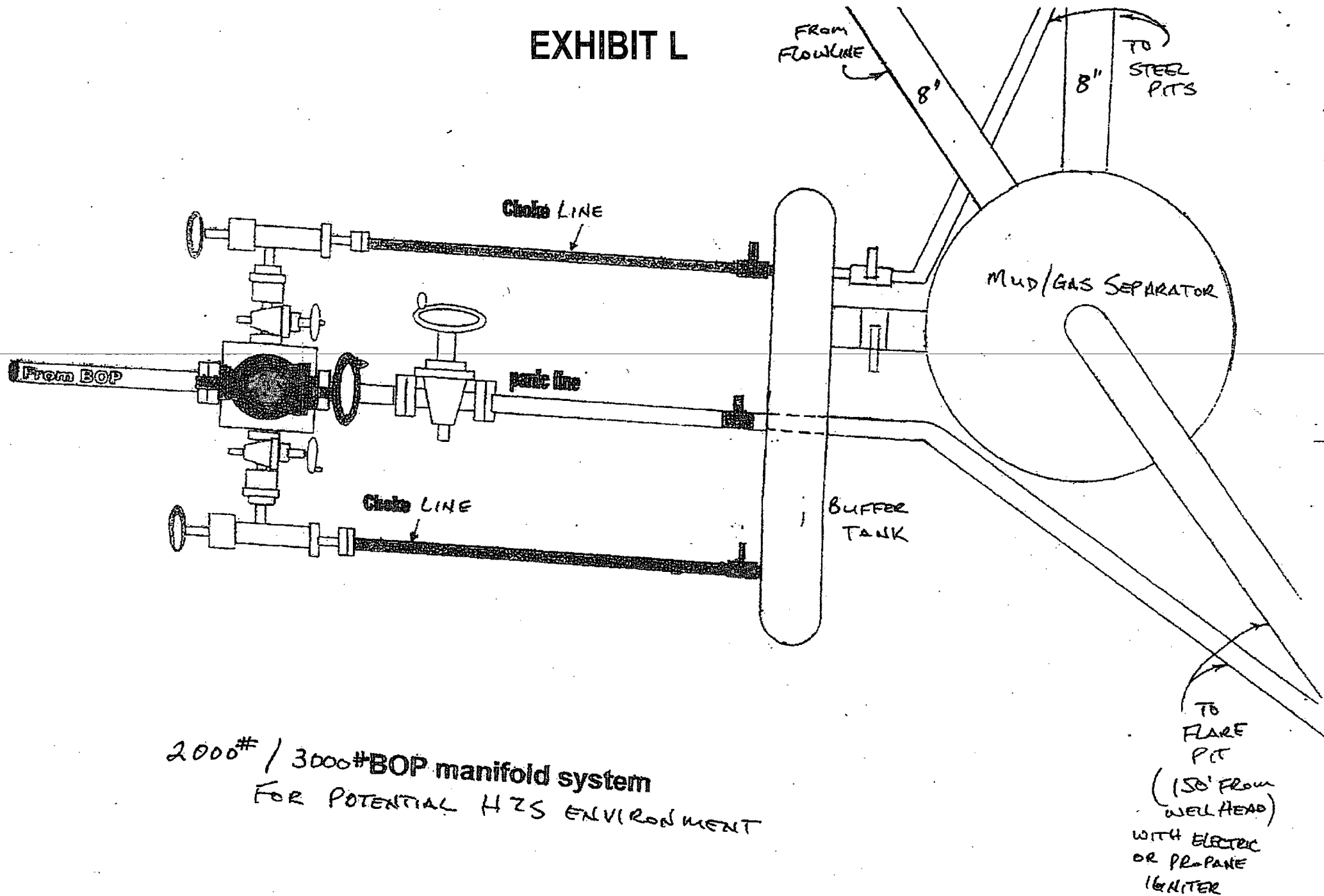
Company: Burnett Oil Company, Inc.  
Well: Jacson B No. 53  
Location: Eddy County, New Mexico

Date: 20-Sep-2012  
Rev0  
Page 1  
Job# : 6808

MD (feet)	Inclination (degrees)	Azimuth (degrees)	TVD RKB (feet)	N/-S (feet)	E/-W (feet)	DLS (deg/100')	VS @ 52.38° Az (feet)	Comments
Surface Location								
3300.00	0.00	113.75	3300.00	0.00	0.00	0.00	0.00	KOP Begin 1.5°/100' Build
3400.00	1.50	113.75	3399.99	-0.53	1.20	1.50	1.31	
3500.00	3.00	113.75	3499.91	-2.11	4.79	1.50	5.23	
3600.00	4.50	113.75	3599.69	-4.74	10.78	1.50	11.77	
3699.81	6.00	113.75	3699.08	-8.42	19.13	1.50	20.90	Begin 6° Tangent Section
4199.81	6.00	113.75	4196.34	-29.46	66.95	0.00	73.14	
4699.81	6.00	113.75	4693.61	-50.50	114.77	0.00	125.38	
5199.81	6.00	113.75	5190.87	-71.54	162.58	0.00	177.62	
5699.81	6.00	113.75	5688.13	-92.57	210.40	0.00	229.86	
6113.94	6.00	113.75	6100.00	-110.00	250.00	0.00	273.13	PBHL/TD



# EXHIBIT L

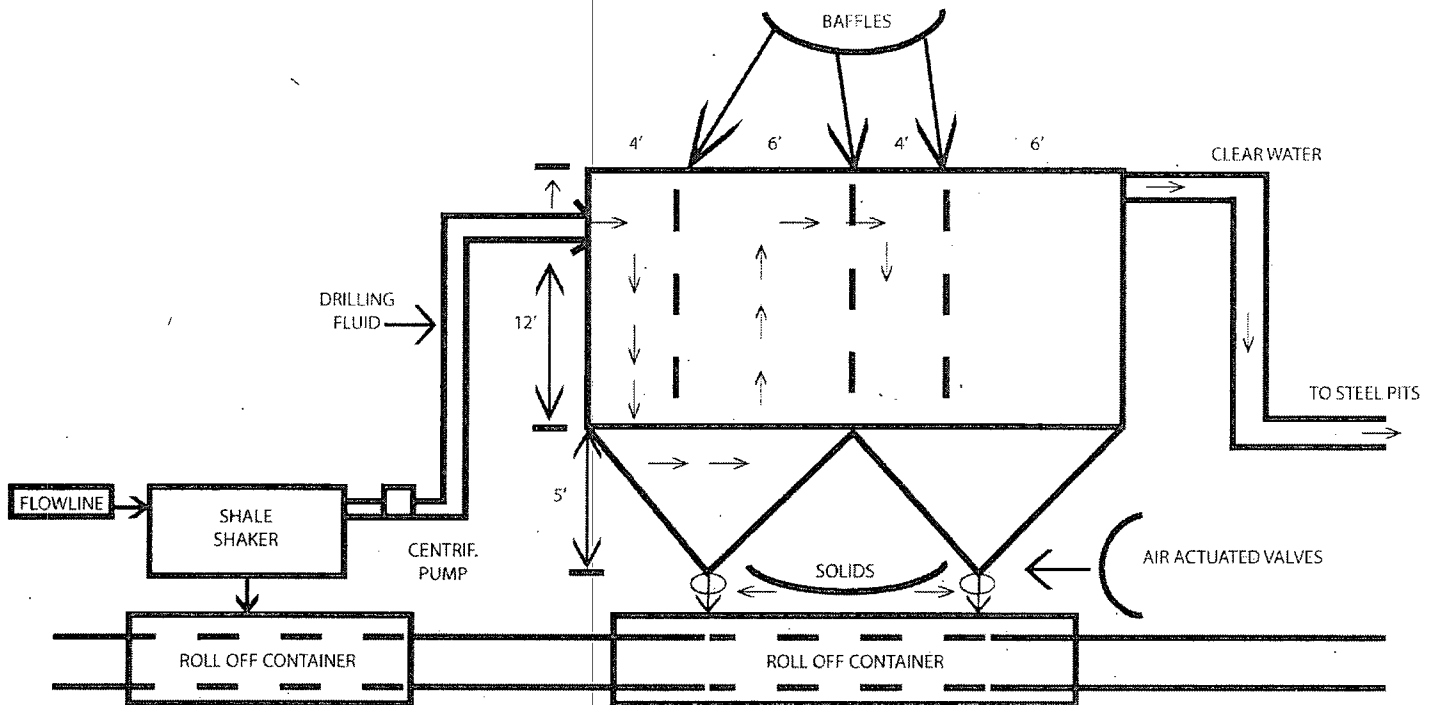


2000# / 3000# BOP manifold system  
FOR POTENTIAL H<sub>2</sub>S ENVIRONMENT



BURNETT OIL CO., INC.

## EXHIBIT M



### OPERATIONS & MAINTENANCE

Drilling Fluids from the wellbore will go through the flow line across the shale shaker. Solids will drop into roll off containers with baffles as drawn above. Baffles slow fluid velocity to allow solids to fall down through 6" air actuated valves into roll off containers. Clean water goes back out to the drilling fluid steel pits. Solids and any leftover liquid will be hauled to disposal.

### INSPECTION

The closed loop equipment will be inspected daily by each tour and any necessary maintenance performed. Any leak in the system will be repaired and/or contained immediately. OCD will be notified within 48 hours. Remediation process started.

### CLOSURE PLAN

During drilling operations, all liquids, drilling fluids and cutting will be hauled off via CRO (Controlled Recovery Incorporated Permit R-9166)



## BURNETT OIL CO., INC.

### HYDROGEN SULFIDE (H<sub>2</sub>S) PLAN & TRAINING

This plan was developed in accordance with 43 CFR 3162.3-1, section III.C, Onshore Oil and Gas Operations Order No. 6.

Based on our area testing H<sub>2</sub>S at 100 PPM has a radius of 139' and does not get off our well sites. There are no schools, residences, churches, parks, public buildings, recreation area or public within 2+ miles of our area.

#### A. Training

##### 1. Training of Personnel

**All personnel, whether regularly assigned, contracted, or employed on an unscheduled basis, will receive training from a qualified instructor in accordance with 43 CFR 3162.3-1, section III.C.3.a. Training will be given in the following areas prior to commencing drilling operations on each well:**

- a. The hazards and characteristics of Hydrogen Sulfide (H<sub>2</sub>S).
- b. The proper use and maintenance of personal protective equipment and life support systems.
- c. The proper use of H<sub>2</sub>S detectors, alarms, warning systems, briefing areas, evacuation procedures and the prevailing wind.
- d. The proper techniques for first aid and rescue procedures.
- e. **ATTACHED HYDROGEN SULFIDE (H<sub>2</sub>S) CONTINGENCY PLAN DRILLING EXHIBIT O**
- f. **ATTACHED EMERGENCY CALL LIST FOR ANY ON SITE EMERGENCY DRILLING EXHIBIT P.**

##### 2. Training of Supervisory Personnel

**In addition to the training above, supervisory personnel will also be trained in the following areas:**

- a. The effects of H<sub>2</sub>S on metal components. If high tensile tubulars are to be used, personnel will be trained in special maintenance requirements.
- b. Corrective action and shut-in procedures when drilling or reworking a well, blowout prevention and well control procedures.
- c. The contents and requirements of the H<sub>2</sub>S Drilling Operations Plan and the Public Protection Plan (if applicable.)

##### 3. Initial and Ongoing Training

There will be an initial training session just prior to encountering a known or probable H<sub>2</sub>S zone (within 3 days or 500 feet) and weekly H<sub>2</sub>S and well control drills for all personnel in each crew. The initial training session shall include a review of the site specific H<sub>2</sub>S Drilling Operations Plan and the Public Protection Plan (if applicable). This plan shall be available at the well site. All personnel will be required to carry documentation that they have received the proper training.

## **B. H2S Drilling Operations Plan**

### **1. Well Control Equipment**

- a. Flare line(s) and means of ignition
- b. Remote control choke
- c. Flare gun/flares
- d. Mud-gas separator

### **2. Protective equipment for essential personnel:**

- a. Mark II Surviveair (or equivalent) 30 minute units located in the dog house and at the primary briefing area (to be determined.)
- b. Means of communication when using protective breathing apparatus.

### **3. H2S detection and monitoring equipment:**

- a. Three (3) portable H2S monitors positioned on location for best coverage and response. These units have warning lights at 10 PPM and warning lights and audible sirens when H2S levels of 15 PPM is reached. A digital display inside the doghouse shows current H2S levels at all three (3) locations.
- b. An H2S Safety compliance set up is on location during all operations.
- c. We will monitor and start fans at 1- ppm or less, an increase over 10 ppm results in the shutdown and installation of the mud/gas separator.
- d. Portable H2S and SO2 monitor(s).

### **4. Visual warning systems:**

- a. Wind direction indicators will be positioned for maximum visibility.
- b. Caution/Danger signs will be posted on roads providing direct access to location. Signs will be painted a high visibility yellow with black lettering of sufficient size to be readable at reasonable distance from the immediate location. Bilingual signs will be used when appropriate.

### **5. Mud program:**

- a. The mud program has been designed to minimize the volume of H2S circulated to the surface Proper mud weight, safe drilling practices and the use of H2S scavengers will minimize hazards when penetrating H2S bearing zones.

### **6. Metallurgy:**

- a. All drill strings, casings, tubing, wellheads, Hydril BOPS, drilling spools, kill lines, choke manifold, valves and lines will be suitable for H2S service.
- b. All elastomers used for packing and seals shall be H2S trim.

**7. Communication:**

- a. Cellular Telephone and/or 2-way radio will be provided at well site.
- b. Landline telephone is located in our field office.



## BURNETT OIL CO., INC.

### EXHIBIT O - HYDROGEN SULFIDE (H<sub>2</sub>S) CONTINGENCY PLAN

#### A. Emergency Procedures

In the event of a release of gas containing H<sub>2</sub>S, the first responder(s) must

1. Isolate the area and prevent entry by other persons into the 100 PPM ROE. Assumed 100PPM ROE = 3000'.
2. Evacuate any public places encompassed by 100 PPM ROE.
3. Be equipped with H<sub>2</sub>S monitors and air packs in order to control release.
4. Use the "buddy system" to ensure no injuries occur during the response.
5. Take precautions to avoid personal injury during this operation.
6. Have received training in the following:
  - a. H<sub>2</sub>S detection
  - b. Measures for protection against this gas
  - c. Equipment used for protection and emergency response.

#### B. Ignition of Gas Source

Should control of the well be considered lost and ignition considered, care will be taken to protect against exposure to Sulfur Dioxide (SO<sub>2</sub>). Intentional ignition will be coordinated with the NMOCD and local officials. Additionally, the New Mexico State Police may become involved. NM State Police shall be the incident command on scene of any major release. Care will be taken to protect downwind whenever there is an ignition of gas.

#### C. Characteristics of H<sub>2</sub>S and SO<sub>2</sub>

<u>Common Name</u>	<u>Chemical Formula</u>	<u>Specific Gravity</u>	<u>Threshold Limit</u>	<u>Hazardous Limit</u>	<u>Lethal Concentration</u>
Hydrogen Sulfide	H <sub>2</sub> S	1.189 Air = 1	10 ppm	100 ppm/hr	600 ppm
Sulfur Dioxide	SO <sub>2</sub>	2.21 Air = 1	2 ppm	NA	1000 ppm



#### **D. Contacting Authorities**

Burnett Oil Co., Inc. personnel will liaison with local and state agencies to ensure a proper response to a major release. Additionally, the OCD will be notified of the release as soon as possible but no later than four (4) hours after the incident. Agencies will ask for information such as type and volume of release, wind and direction, location of release, etc. Be sure all is written down and ready to give to contact list attached. Burnett's response must be in coordination with the State of New Mexico's Hazardous Materials Emergency Response Plan.

Directions to the site are as follows:

Burnett Office  
87 Square Lake Road (CR #220)  
Loco Hills, NM 88255

Loco Hills, New Mexico (2 miles East of Loco Hills on US Hwy 82 to C #220. Then North on CR #220 approximately one (1) mile to office.



## BURNETT OIL Co., INC.

### EXHIBIT P - EMERGENCY NOTIFICATION LIST

#### BURNETT CONTACTS

**Burnett's New Mexico Office** 575.677.2313  
87 Square Lake Road (CR #220) Loco Hills, New Mexico 88255  
**Directions: Loco Hills, NM – 2 miles east of Loco Hills on US Hwy 82 to CR#220. Then North on CR #220 approximately one (1) mile to office.**

**Belton Mathews – BOCI District Superintendent (NM)** Cell - 575.703.9601

**Burnett Oil Home Office** 817.332.5108  
Burnett Plaza – Suite 1500 | 801 Cherry Street – Unit #9| Fort Worth, Texas 76102

**Mark Jacoby – BOCI Engineering Manager (TX)** Cell – 817-312-2751

#### SHERIFF/POLICE CONTACTS

Eddy County Sheriff, 911 or 575.677.2313  
New Mexico State Police 575.746.2701

#### FIRE DEPARTMENT

Loco Hills Fire Department (VOLUNTEER ONLY) 911 or 575.677.2349  
For Medical and Fire (Artesia) 575.746.2701

#### AIR AMBULANCE

Flight for Life Air Ambulance	(Lubbock)	806.743.9911
Aerocare Air Ambulance	(Lubbock)	806.747.8923
Med Flight Air Ambulance	(Albuq)	505.842.4433
S B Med Svc Air Ambulance	(Albuq)	505.842.4949

#### FEDERAL AND STATE

US Bureau of Land Management (Carlsbad)	575.361.2822	575.234.5972
New Mexico Oil Conservation Division (Artesia)		575.748.1283
New Mexico Emergency Response Commission (24 hour)		575.827.9126
Local Emergency Planning Operation Center (Artesia)		505.842.4949
National Emergency Response Center (Washington, DC)		800.424.8802

#### OTHER IMPORTANT NUMBERS

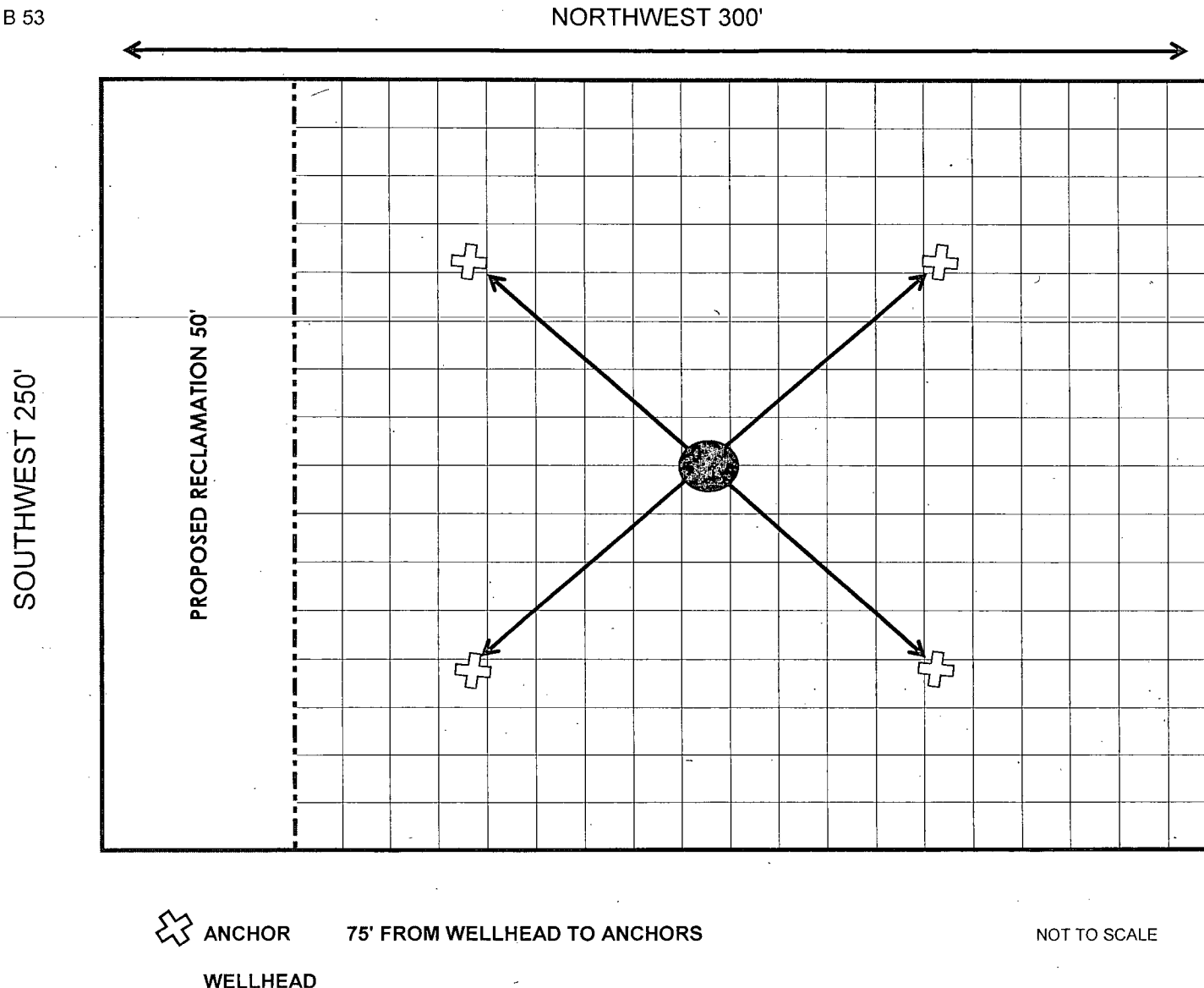
Boots & Coots IWC	800.256.9688
Cudd Pressure Control	432.570.5300
Halliburton Services	575.746.2757
BJ Service	575.746.2293

**THIS MUST BE POSTED AT THE RIG WHILE ON LOCATION**

# EXHIBIT Q

**BURNETT OIL CO., INC.**  
INTERIM RECLAMATION PLAT

JACKSON B 53



UNITED STATES  
DEPARTMENT OF THE INTERIOR  
BUREAU OF LAND MANAGEMENT

BLM Carlsbad Field Office

FORM APPROVED  
OMB NO. 1004-0135  
Expires: July 31, 2010**SUNDRY NOTICES AND REPORTS ON WELLS**  
**Do not use this form for proposals to drill or to re-enter an abandoned well. Use form 3160-3 (APD) for such proposals.**5. Lease Serial No.  
NMNM2747

6. If Indian, Allottee or Tribe Name

7. If Unit or CA/Agreement, Name and/or No.

8. Well Name and No.  
JACKSON B 53

9. API Well No.

30-015-40942

10. Field and Pool, or Exploratory  
CEDAR LAKE GLORIETA YESO

11. County or Parish, and State

EDDY COUNTY COUNTY, NM

**SUBMIT IN TRIPLICATE - Other instructions on reverse side.**

1. Type of Well

☒ Oil Well ☐ Gas Well ☐ Other

2. Name of Operator

BURNETT OIL CO., INC.

Contact: LESLIE M GARVIS

E-Mail: lgarvis@burnettoil.com

3a. Address

BURNETT PLAZA - SUITE 1500 801 CHERRY STREET  
FORT WORTH, TX 76102

3b. Phone No. (include area code)

Ph: 817-332-5081; 817-332-6102

4. Location of Well (Footage, Sec., T., R., M., or Survey Description)

Sec 1 T17S R30E 440FSL 740FWL

**12. CHECK APPROPRIATE BOX(ES) TO INDICATE NATURE OF NOTICE, REPORT, OR OTHER DATA**

TYPE OF SUBMISSION	TYPE OF ACTION			
<input checked="" type="checkbox"/> Notice of Intent	<input type="checkbox"/> Acidize	<input type="checkbox"/> Deepen	<input type="checkbox"/> Production (Start/Resume)	<input type="checkbox"/> Water Shut-Off
<input type="checkbox"/> Subsequent Report	<input type="checkbox"/> Alter Casing	<input type="checkbox"/> Fracture Treat	<input type="checkbox"/> Reclamation	<input type="checkbox"/> Well Integrity
<input type="checkbox"/> Final Abandonment Notice	<input type="checkbox"/> Casing Repair	<input checked="" type="checkbox"/> New Construction	<input type="checkbox"/> Recomplete	<input type="checkbox"/> Other
	<input type="checkbox"/> Change Plans	<input type="checkbox"/> Plug and Abandon	<input type="checkbox"/> Temporarily Abandon	
	<input type="checkbox"/> Convert to Injection	<input type="checkbox"/> Plug Back	<input type="checkbox"/> Water Disposal	

13. Describe Proposed or Completed Operation (clearly state all pertinent details, including estimated starting date of any proposed work and approximate duration thereof. If the proposal is to deepen directionally or recompleat horizontally, give subsurface locations and measured and true vertical depths of all pertinent markers and zones. Attach the Bond under which the work will be performed or provide the Bond No. on file with BLM/BIA. Required subsequent reports shall be filed within 30 days following completion of the involved operations. If the operation results in a multiple completion or recompleat in a new interval, a Form 3160-4 shall be filed once testing has been completed. Final Abandonment Notices shall be filed only after all requirements, including reclamation, have been completed, and the operator has determined that the site is ready for final inspection.)

Burnett Oil is respectfully requesting permission to build location on this well in anticipation of the APD approval.

We understand that in the even the APD is not approved, Burnett will be responsible for reclaiming the location.

14. I hereby certify that the foregoing is true and correct.

Electronic Submission #162074 verified by the BLM Well Information System  
For BURNETT OIL CO., INC., sent to the Carlsbad  
Committed to AFMSS for processing by KURT SIMMONS on 12/13/2012 ()

Name (Printed/Typed) LESLIE M GARVIS

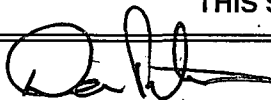
Title REGULATORY COORDINATOR

Signature (Electronic Submission)

Date 12/10/2012

**THIS SPACE FOR FEDERAL OR STATE OFFICE USE**

Approved By



Title

AFM

Date

12/14/12

Conditions of approval, if any, are attached. Approval of this notice does not warrant or certify that the applicant holds legal or equitable title to those rights in the subject lease which would entitle the applicant to conduct operations thereon.

Office

Title 18 U.S.C. Section 1001 and Title 43 U.S.C. Section 1212, make it a crime for any person knowingly and willfully to make to any department or agency of the United States any false, fictitious or fraudulent statements or representations as to any matter within its jurisdiction.

**\*\* OPERATOR-SUBMITTED \*\* OPERATOR-SUBMITTED \*\* OPERATOR-SUBMITTED \*\***

# PECOS DISTRICT CONDITIONS OF APPROVAL

OPERATOR'S NAME:	BURNETT OIL
LEASE NO.:	NM2747
WELL NAME & NO.:	53-JACKSON B
SURFACE HOLE FOOTAGE:	440'/S. & 740'/E.
BOTTOM HOLE FOOTAGE:	330'/S. & 990'/W.
LOCATION:	Section 1, T. 17 S., R. 30 E., NMPM
COUNTY:	Eddy County, New Mexico

## TABLE OF CONTENTS

Standard Conditions of Approval (COA) apply to this APD. If any deviations to these standards exist or special COAs are required, the section with the deviation or requirement will be checked below.

- ☐ **General Provisions**
- ☐ **Permit Expiration**
- ☐ **Archaeology, Paleontology, and Historical Sites**
- ☐ **Noxious Weeds**
- ☒ **Special Requirements**
  - Lesser Prairie-Chicken Timing Stipulations
  - Ground-level Abandoned Well Marker
- ☐ **Construction**
  - Notification
  - Topsoil
  - Closed Loop System
  - Federal Mineral Material Pits
  - Well Pads
  - Roads
- ☐ **Road Section Diagram**
- ☐ **Drilling**
  - Waste Material and Fluids
- ☐ **Production (Post Drilling)**
  - Well Structures & Facilities
  - Pipelines
  - Electric Lines
- ☐ **Interim Reclamation**
- ☐ **Final Abandonment & Reclamation**