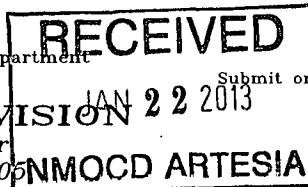


DISTRICT I
1625 N. French Dr., Hobbs, NM 88240
DISTRICT II
1301 W. Grand Avenue, Artesia, NM 88210
DISTRICT III
1000 Rio Brazos Rd., Aztec, NM 87410
DISTRICT IV
1220 S. St. Francis Dr., Santa Fe, NM 87505

State of New Mexico
Energy, Minerals and Natural Resources Department

OIL CONSERVATION DIVISION
1220 South St. Francis Dr.
Santa Fe, New Mexico 87505



Form C-102
Revised July 16, 2010
Submit one copy to appropriate
District Office

WELL LOCATION AND ACREAGE DEDICATION PLAT

☐ AMENDED REPORT

API Number 30-015-39810	Pool Code 47545	Pool Name Nash Draw; Delaware
Property Code 306402	Property Name POKER LAKE UNIT	Well Number 320H
OGRID No. 260737	Operator Name BOPCO, L.P.	Elevation 3364'

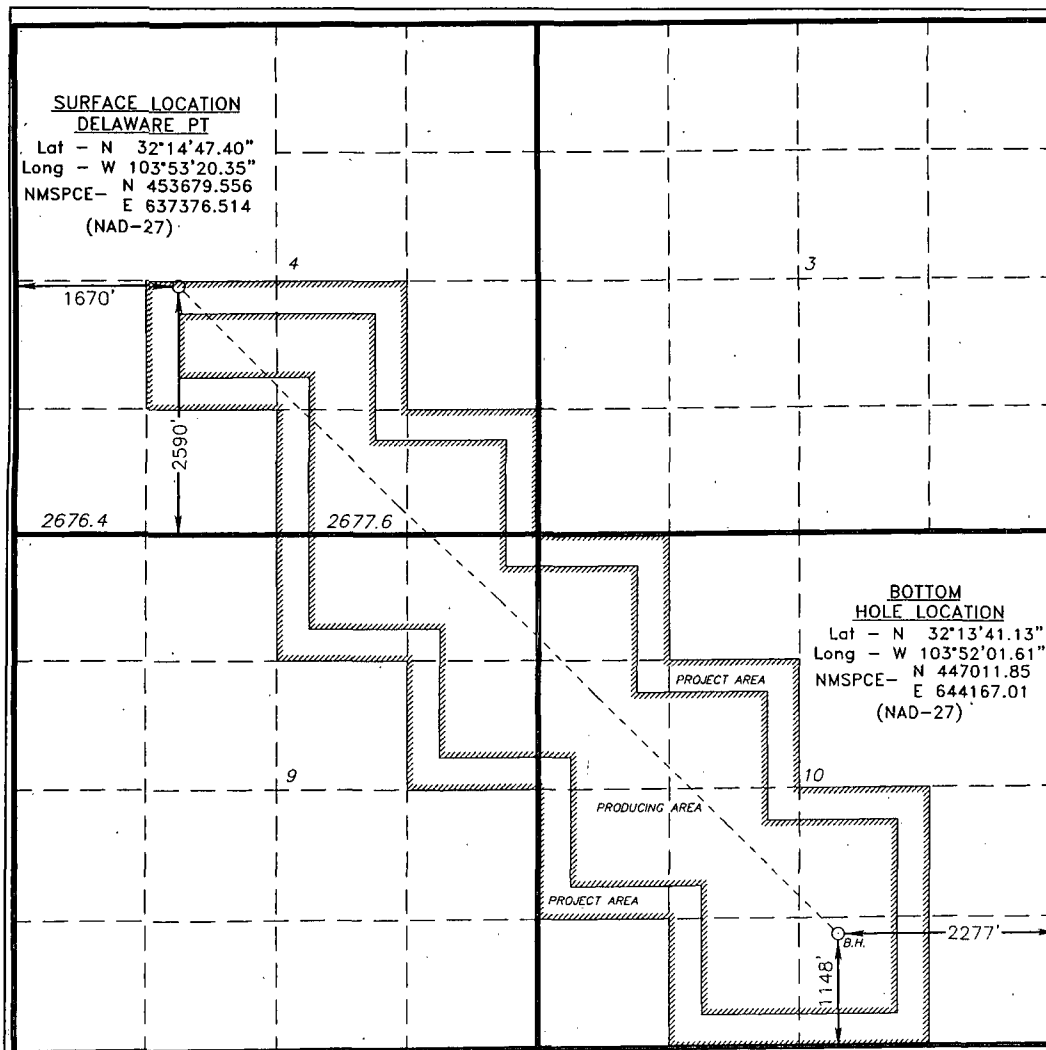
Surface Location

UL or lot No. K	Section 4	Township 24 S	Range 30 E	Lot Idn	Feet from the 2590	North/South line SOUTH	Feet from the 1670	East/West line WEST	County EDDY
--------------------	--------------	------------------	---------------	---------	-----------------------	---------------------------	-----------------------	------------------------	----------------

Bottom Hole Location If Different From Surface

UL or lot No. O	Section 10	Township 24 S	Range 30 E	Lot Idn	Feet from the 1148	North/South line SOUTH	Feet from the 2277	East/West line EAST	County EDDY
Dedicated Acres 600	Joint or Infill	Consolidation Code	Order No.						

NO ALLOWABLE WILL BE ASSIGNED TO THIS COMPLETION UNTIL ALL INTERESTS HAVE BEEN CONSOLIDATED
OR A NON-STANDARD UNIT HAS BEEN APPROVED BY THE DIVISION



OPERATOR CERTIFICATION

I hereby certify that the information contained herein is true and complete to the best of my knowledge and belief, and that this organization either owns a working interest or unleased mineral interest in the land including the proposed bottom hole location or has a right to drill this well at this location pursuant to a contract with an owner of such a mineral or working interest, or to a voluntary pooling agreement or a compulsory pooling order heretofore entered by the division.

Jeremy Braden 12-19-12
Signature Date

Jeremy Braden
Printed Name

jbraden@bascpet.com
Email Address

SURVEYOR CERTIFICATION

I hereby certify that the well location shown on this plat was plotted from field notes of actual surveys made by me or under my supervision, and that the same is true and correct to the best of my belief.

GARY L. JONES
Date Surveyed

GARY L. JONES
Signature & Seal of Professional Surveyor 7977

GARY L. JONES
W.O. No.

Certificate No. Gary L. Jones 7977

BASIN SURVEYS 26661