

Split Estate

UNITED STATES
DEPARTMENT OF THE INTERIOR
BUREAU OF LAND MANAGEMENT

OCD Artesia

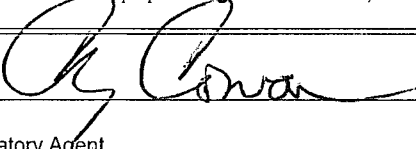
APPLICATION FOR PERMIT TO DRILL OR REENTER

1a. Type of work: <input checked="" type="checkbox"/> DRILL <input type="checkbox"/> REENTER		7. If Unit or CA Agreement, Name and No. NM NM -123701
1b. Type of Well: <input type="checkbox"/> Oil Well <input checked="" type="checkbox"/> Gas Well <input type="checkbox"/> Other <input checked="" type="checkbox"/> Single Zone <input type="checkbox"/> Multiple Zone		8. Lease Name and Well No. Link BKT Fed. Com #4H
2. Name of Operator YATES PETROLEUM CORPORATION		9. API Well No. 30-015-41104
3a. Address 105 South Fourth Street Artesia, NM 88210	3b. Phone No. (include area code) 575-748-4347	10. Field and Pool, or Exploratory Cottonwood Creek; Wolfcamp
4. Location of Well (Report location clearly and in accordance with any State requirements.)* At surface 1880' FSL & 240' FEL, Section 18, T16S-R25E, Ut. Ltr. I, NENW At proposed prod. zone 1880' FSL & 660' FEL, Section 17, T16S-R25E, Ut. Ltr. I, NESE		11. Sec., T. R. M. or Blk. and Survey or Area Section 18, T16S-R25E, SHL Section 17, T16S-R25E, BHL
14. Distance in miles and direction from nearest town or post office* Approximately six (6) miles northwest of Artesia, New Mexico		12. County or Parish Eddy
15. Distance from proposed* 240' location to nearest property or lease line, ft. (Also to nearest drig. unit line, if any)		13. State NM
16. No. of acres in lease NM-9402 - 478.81; B-8318- 40; NM-10260-640; L-6781-		17. Spacing Unit dedicated to this well S/2 320 acres in 17-16S-25E
18. Distance from proposed location* 20' Surface Location and to nearest well, drilling, completed, 300' in the lateral. applied for, on this lease, ft.		20. BLM/BIA Bond No. on file NATIONWIDE BOND #NMB000434 Individual Bond #NMB000920
21. Elevations (Show whether DF, KDB, RT, GL, etc.) 3554' GL		22. Approximate date work will start* 12/26/2012
		23. Estimated duration 60 days

24. Attachments

The following, completed in accordance with the requirements of Onshore Oil and Gas Order No.1, must be attached to this form:

- | | |
|--|---|
| 1. Well plat certified by a registered surveyor. | 4. Bond to cover the operations unless covered by an existing bond on file (see Item 20 above). |
| 2. A Drilling Plan. | 5. Operator certification |
| 3. A Surface Use Plan (if the location is on National Forest System Lands, the SUPO must be filed with the appropriate Forest Service Office). | 6. Such other site specific information and/or plans as may be required by the BLM. |

25. Signature 	Name (Printed/Typed) Cy Cowan	Date 10/30/12
Title Land Regulatory Agent		
Approved by (Signature) /s/ Don Peterson	Name (Printed/Typed) /s/ Don Peterson	Date
Title FIELD MANAGER	Office CARLSBAD FIELD OFFICE	

Application approval does not warrant or certify that the applicant holds legal or equitable title to those rights in the subject lease which would entitle the applicant to conduct operations thereon.
Conditions of approval, if any, are attached.

APPROVAL FOR TWO YEARS

Title 18 U.S.C. Section 1001 and Title 43 U.S.C. Section 1212, make it a crime for any person knowingly and willfully to make to any department or agency of the United States any false, fictitious or fraudulent statements or representations as to any matter within its jurisdiction.

(Continued on page 2)

Roswell Controlled Water Basin

SEE ATTACHED FOR
CONDITIONS OF APPROVALApproval Subject to General Requirements
& Special Stipulations Attached

1825 N. French Dr., Hobbs, NM 88240

DISTRICT II

1301 W. Grand Avenue, Artesia, NM 88210

DISTRICT III

1000 Rio Brazos Rd., Aztec, NM 87410

DISTRICT IV

1220 S. St. Francis Dr., Santa Fe, NM 87505

State of New Mexico
Energy, Minerals and Natural Resources Department

Revised October 12, 2005

Submit to Appropriate District Office

State Lease - 4 Copies

Fee Lease - 3 Copies

OIL CONSERVATION DIVISION

1220 South St. Francis Dr.

Santa Fe, New Mexico 87505

☐ AMENDED REPORT**WELL LOCATION AND ACREAGE DEDICATION PLAT**

API Number 30-015-41104	Pool Code 75260	Pool Name Cottonwood Creek, Wolfcamp, W (GAS)
Property Code 025575 37208	Property Name LINK "BKT" FEDERAL COM	Well Number 4H
OGRID No. 025575	Operator Name YATES PETROLEUM CORP.	Elevation 3554'

Surface Location

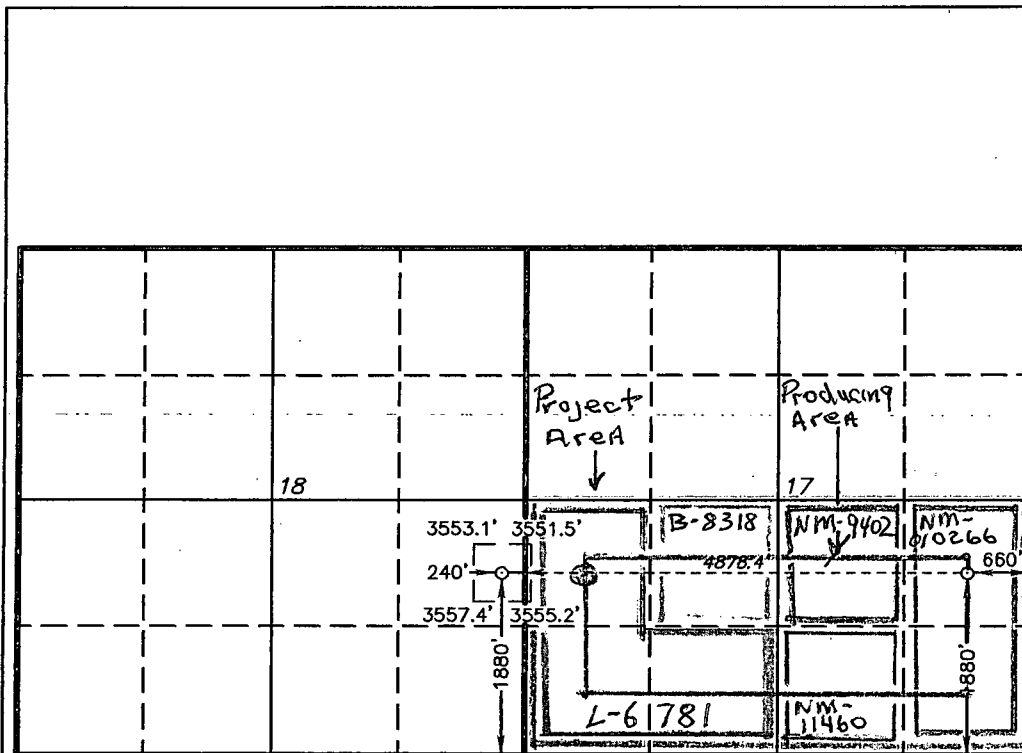
UL or lot No.	Section	Township	Range	Lot Idn	Feet from the	North/South line	Feet from the	East/West line	County
1	18	16 S	25 E		1880	SOUTH	240	EAST	EDDY

Bottom Hole Location If Different From Surface

UL or lot No.	Section	Township	Range	Lot Idn	Feet from the	North/South line	Feet from the	East/West line	County
1	17	16 S	25 E		1880	SOUTH	660	EAST	EDDY

Dedicated Acres	Joint or Infill	Consolidation Code	Order No.
320			

**NO ALLOWABLE WILL BE ASSIGNED TO THIS COMPLETION UNTIL ALL INTERESTS HAVE BEEN CONSOLIDATED
OR A NON-STANDARD UNIT HAS BEEN APPROVED BY THE DIVISION**



Penetration
Point
1880' FSL + 660' FWL

SURFACE LOCATION
Lat - N32°55'15.47"
Long - W104°31'01.13"
SPC- N.: 698829.985
E.: 484985.649
(NAD-83)

BOTTOM HOLE LOCATION
Lat - N32°55'15.36"
Long - W104°30'03.89"
SPC- N.: 698810.737
E.: 489863.961
(NAD-83)

OPERATOR CERTIFICATION

I hereby certify that the information contained herein is true and complete to the best of my knowledge and belief, and that this organization either owns a working interest or unleased mineral interest in the land including the proposed bottom hole location pursuant to a contract with an owner of such a mineral or working interest, or to a voluntary pooling agreement or a compulsory pooling order heretofore entered by the division.

Cy Cowan 10/29/12
Signature Date

Cy Cowan
Printed Name

SURVEYOR CERTIFICATION

I hereby certify that the well location shown on this plat was plotted from field notes of actual surveys made by me or under my supervision, and that the same is true and correct to the best of my belief.

MAY 8 2008

Date Surveyed
Signature
Professional Seal

Gary L. Jones
Professional Seal
No. 9243

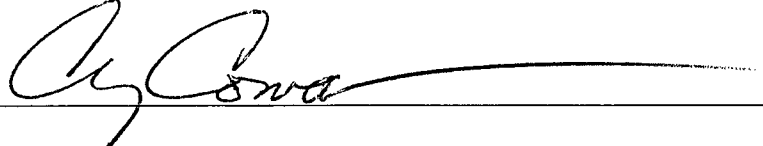
Certificate No. Gary L. Jones 7977

BASIN SURVEYS

CERTIFICATION
YATES PETROLEUM CORPORATION

I hereby certify that I, or someone under my direct supervision, have inspected the drill site and access route proposed herein; that I am familiar with the conditions which currently exist; and an someone under employment of Yates Petroleum Corporation has full knowledge of state and federal laws applicable to this operation; that the statements made in this APD package are, to the best of my knowledge, true and correct; and that the work associated with the operations proposed herein will be performed in conformity with this APD package and the terms and conditions under which it is approved. I also certify that I, or the company I represent, am responsible for the operations conducted under this application. These statements are subject to the provisions of 18 U.S.C. 1001 for the filing of false statements.

Executed this 30th day of October 2012

Signature 

Name Cy Cowan

Position Title Regulatory Agent

Address 105 South Fourth Street, Artesia, New Mexico 88210

Telephone (505) 748-4372

Field Representative (if not above signatory) Tim Bussell, Drilling Supervisor

Address (if different from above) Same as above.

Telephone (if different from above) (505) 748-4221

E-mail (optional) _____

YATES PETROLEUM CORPORATION
Link BKT Federal Com. #4H
 1880' FSL and 240' FEL (Surface Hole Location)
 Section 18, T16S-R25E Unit I
 1880' FSL and 660' FEL (Bottom Hole Location)
 Section 17, T16S-R25E Unit I
 Eddy County, New Mexico

1. **The estimated tops of geologic markers are as follows:**

Formation	TVD	Formation	TVD	MD
Penrose	210'	Tubb	3135' Oil	
Grayburg	450'	Abo	3844' Oil	
San Andres	566' Oil	TVD Kick-Off	4400'	
Glorietta	1820' Oil	Wolfcamp	5218' Gas	
Yeso	1985' Oil	Lateral Hole	4878' Gas	9552' Gas

2. The estimated depths at which anticipated water, oil or gas formations are expected to be encountered:

Water: 41'
 Oil or Gas: Wolfcamp

3. **Pressure Control Equipment:** A 13 5/8" BOP will be installed and tested on the 13 3/8" casing and rated for 3000 psi system and will be consistent with API RP 53. A 11" Bop will be installed and tested on the 9 5/8" casing and rated for 5000 psi system and will be consistent with API RP 53. Pressure tests will be conducted before drilling out from under all casing strings which are set and cemented in place. Blowout Preventer controls will be installed prior to drilling the surface plug and will remain in use until the well is completed or abandoned. Preventers will be inspected and operated at least daily to ensure good mechanical working order, and this inspection recorded on the daily drilling report. See Exhibit B.

Auxiliary Equipment:

A. Auxiliary Equipment: Kelly cock, pit level indicators, flow sensor equipment and a sub with full opening valve to fit the drill pipe and collars will be available on the rig floor in the open position at all times for use when kelly is not in use.

4. **THE PROPOSED CASING AND CEMENTING PROGRAM:**

A. Casing Program: (All New)

Hole Size	Casing Size	Wt./Ft	Grade	Thread	Interval	Length
26"	20"	94#	H-40	ST&C	0-40'	40'
17 1/2"	13 3/8"	48#	J-55 Hybrid	ST&C	0-400'	400'
12 1/4"	9 5/8"	36#	J-55 or K-55	LT&C	0-1000'	1000'
8 3/4"	5 1/2"	17#	L-80	LT&C	0-4500'	4500'
8 1/2"	5 1/2"	17#	L-80	Buttress	4500'-9101'	4601'

The vertical portion of this well will be drilled to 4581'. At 4581' the well will be directionally drilled at 12 degrees per 100' with a 8 3/4" hole until 5218' MD (4894' TVD). The hole size will be reduced to 8 1/2" and drilled to 9101' MD (4950' TVD) where 5 1/2" casing will be set and cemented 500' into the intermediate casing. The penetration point for the Wolfcamp formation will be 755' FWL & 1980' FSL of Section 17-T16S-R25E. The deepest TVD reached in this well will be 4950'

Minimum Casing Design Factors: Burst 1.0, Tensile Strength 1.8, Collapse 1.125

B. CEMENTING PROGRAM:

Conductor Casing: Cemented with Ready Mix to surface.

13 3/8" Surface Casing: TOC Surface, 415 sacks of Class "C" + 2% CaCl₂ (WT 14.80 YLD 1.34). Cement designed with 100% excess.

9 5/8" Intermediate Casing: TOC Surface. Lead with 175 sacks 35:65:6PzC (WT 12.50 YLD 2.00) Tail in with 200 sacks Class C + 2%CaCl₂ (WT 14.80 YLD 1.34). Cement designed with 100% excess.

5 1/2" Production Casing: TOC 500'. Lead w/ 784 sacks 35:65:6PzC (WT 12.50 YLD 2.00). Tail in w/ 970 sacks PecosVILt with D112 Fluid Loss 0.4%; D151 Calcium Carbonate 22.5 lb/sack; D174 Extender 1.5 lb/sack; D177 Retarder 0.01 lb/sack; D800 Retarder 0.6 lb/sack; D46 Retarder Antifoam Agent 0.15 lb/sack. (WT 13.00 YLD 1.41). Cement designed with 35% excess.

5. Mud Program and Auxiliary Equipment:

Interval	Type	Weight	Viscosity	Fluid Loss
0 to 400'	Fresh Water	8.6-9.2	28-32	N/C
400'-1000'	Fresh Water	8.6-9.2	28-29	N/C
1000'-9101'	Cut Brine (Horizontal Section)	8.8-9.2	28-34	<10-15cc

Sufficient mud material(s) to maintain mud properties, control lost circulation and contain a blow out will be available at the well site during drilling operations. Mud will be checked hourly by rig personnel.

6. EVALUATION PROGRAM *see CoA*

Samples: 10' out from under surface casing to TD.

Logging: Horizontal MWD/GR-surface to TD

Coring: None anticipated.

DST's: None anticipated.

Mudlogging: Yes, Bottom of surface casing (approx. 400') to TD

7. Abnormal Conditions, Bottom hole pressure and potential hazards:

Anticipated BHP:

From: 0	TO 400' TVD	Anticipated Max. BHP: 191	PSI
From: 400'	TO 1000' TVD	Anticipated Max. BHP: 530	PSI
From: 1000'	TO 4950' TVD	Anticipated Max. BHP: 2368	PSI

Lost Circulation Zones Anticipated: None

H2S Zones Anticipated: None

Maximum Bottom Hole Temperature: 168° F

8. ANTICIPATED STARTING DATE:

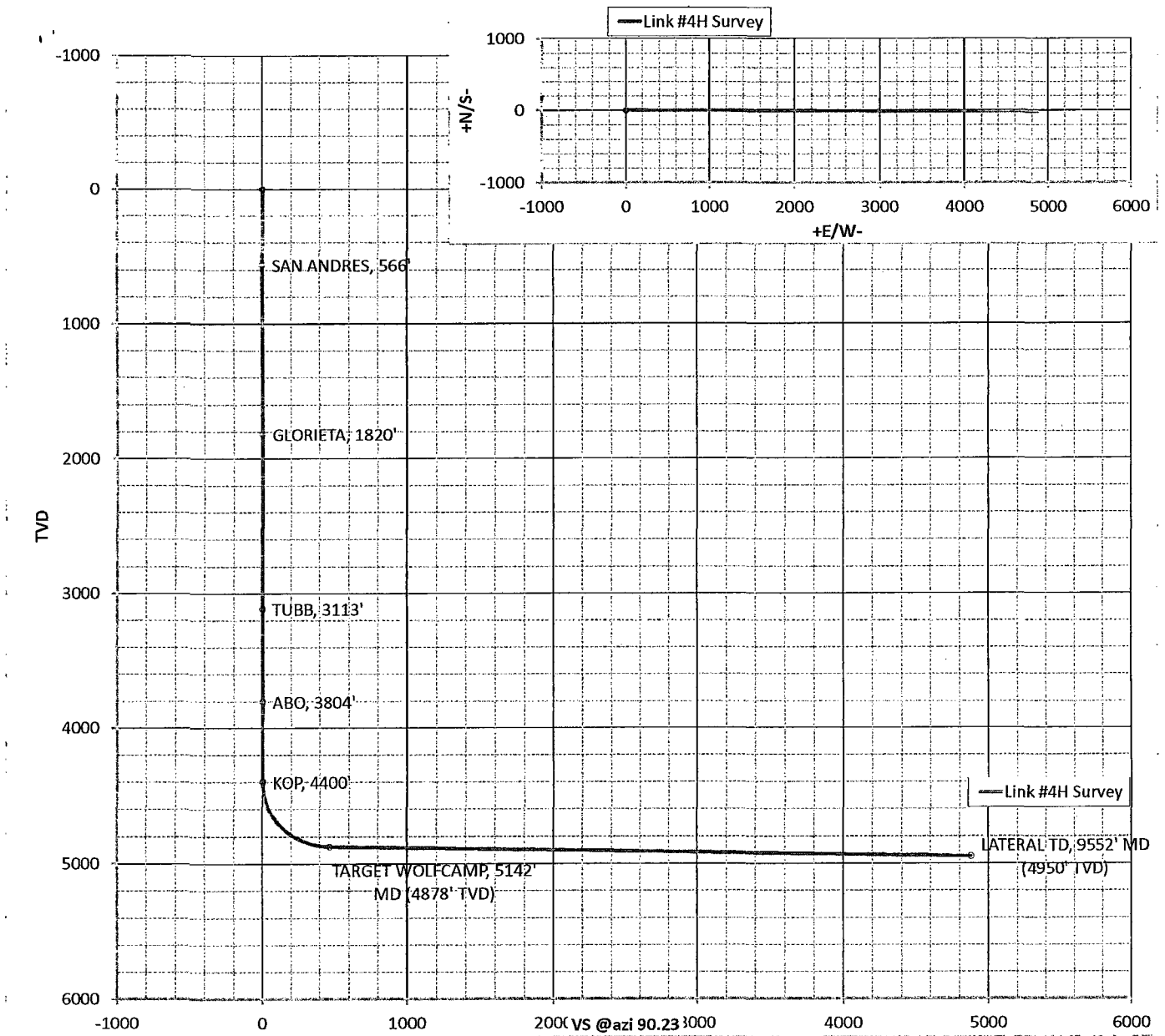
Plans are to drill this well as soon as possible after receiving approval. It should take approximately 60 days to drill the well with completion taking another 25 days.

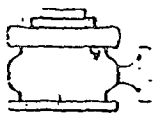
Operator Co.

Your Co.

Survey/Planning Report									
Operator	Yates Petroleum Corp.			Northing			Date	21-Sep-12	
Dir. Co.	Yates Petroleum Corp.			Easting			System	2 - St. Plane	
Well Name	Link #4H Survey			Elevation			Datum	1983 - NAD83	
Location	Sec. 18, 16S-25E			Latitude			Zone	4302 - Utah Central	
Rig				Longitude			Scale Fac.		
Job				Units	Feet		Converg.		
MD	INC	AZI	TVD	+NS-	+EW-	VS@90.23°	BR	TR	DLS
0.00	0.00	0.00	0.00	0.00	0.00	0.00	0.00	0.00	0.00
566.00	0.00	0.00	566.00	0.00	0.00	0.00	0.00	0.00	0.00
566: SAN ANDRES, 566'									
1820.00	0.00	0.00	1820.00	0.00	0.00	0.00	0.00	0.00	0.00
1820: GLORIETA, 1820'									
3113.00	0.00	0.00	3113.00	0.00	0.00	0.00	0.00	0.00	0.00
3113: TUBB, 3113'									
3804.00	0.00	0.00	3804.00	0.00	0.00	0.00	0.00	0.00	0.00
3804: ABO, 3804'									
4400.26	0.00	90.23	4400.26	0.00	0.00	0.00	0.00	2.05	0.00
4400.26: KOP, 4400'									
4500.00	11.97	90.23	4499.28	-0.04	10.38	10.38	12.00	0.00	12.00
4600.00	23.97	90.23	4594.23	-0.16	41.17	41.17	12.00	0.00	12.00
4700.00	35.97	90.23	4680.70	-0.36	91.03	91.03	12.00	0.00	12.00
4800.00	47.97	90.23	4754.91	-0.62	157.78	157.78	12.00	0.00	12.00
4900.00	59.97	90.23	4813.63	-0.94	238.50	238.50	12.00	0.00	12.00
5000.00	71.97	90.23	4854.28	-1.30	329.67	329.67	12.00	0.00	12.00
5100.00	83.97	90.23	4875.09	-1.68	427.29	427.29	12.00	0.00	12.00
5142.43	89.06	90.23	4877.66	-1.85	469.63	469.63	12.00	0.00	12.00
5142.43: TARGET WOLFCAMP, 5142' MD (4878' TVD)									
9551.74	89.06	90.23	4950.01	-19.25	4878.31	4878.35	0.00	0.00	0.00
9551.74: LATERAL TD, 9552' MD (4950' TVD)									



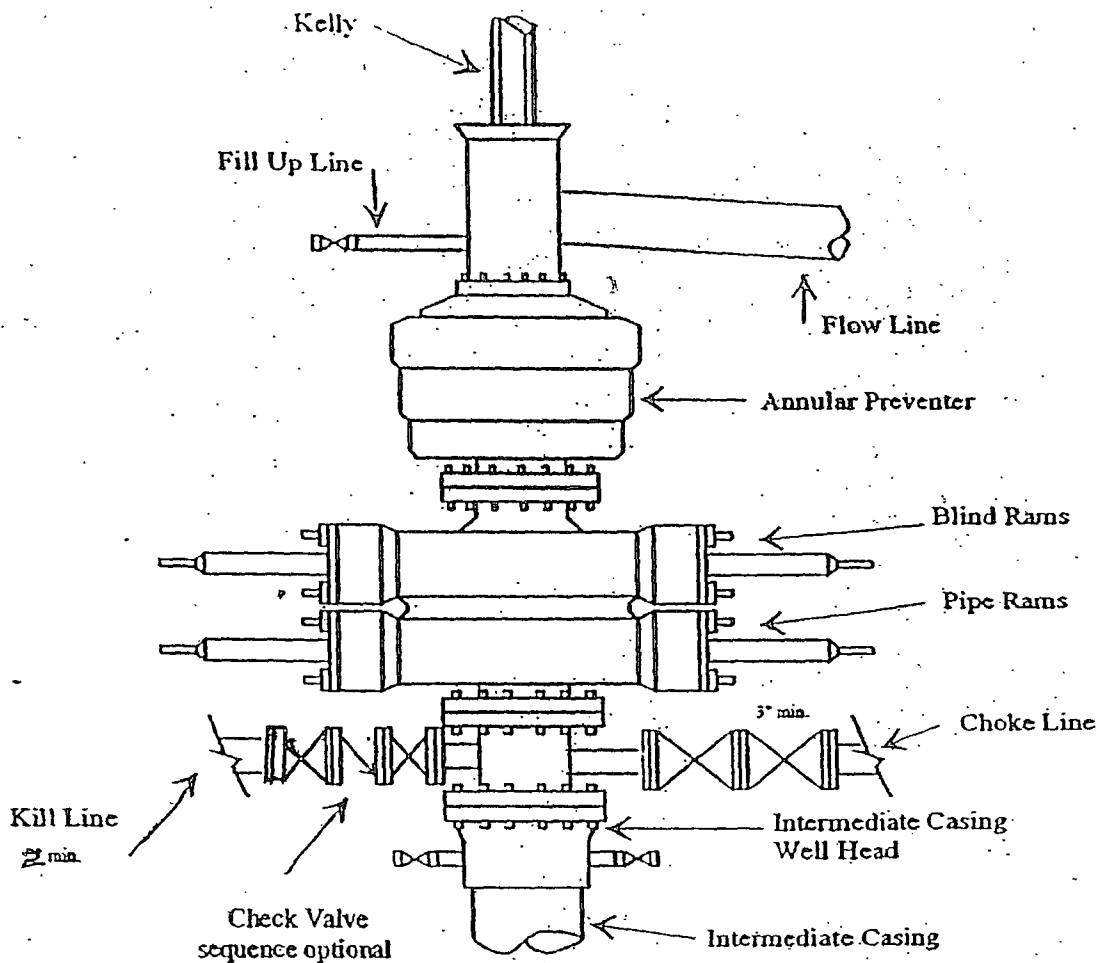




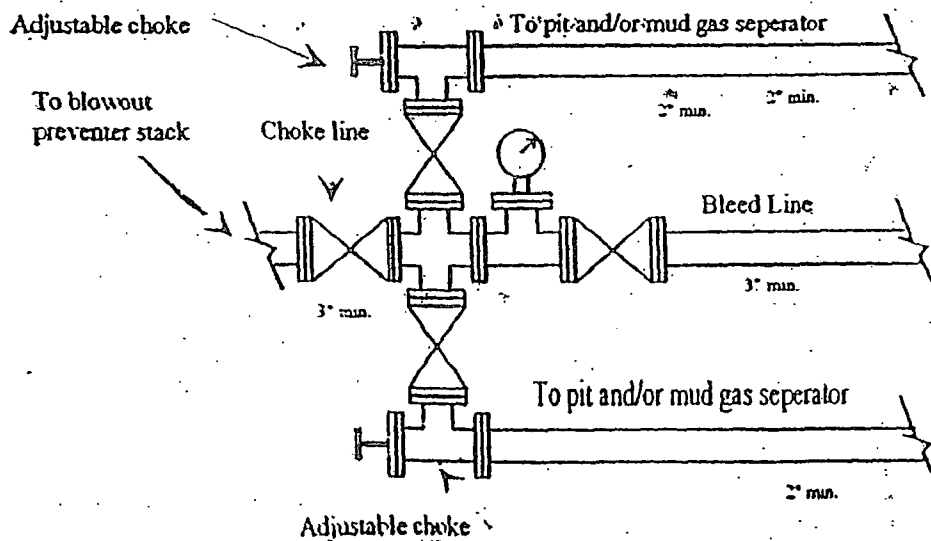
Yates Petroleum Corporation
Typical 3,000 psi Pressure System
Schematic
Annular with Double Ram Preventer Stack

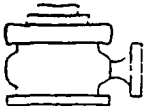
BOP-3

Exhibit



Typical 3,000 psi choke manifold assembly with at least these minimum features



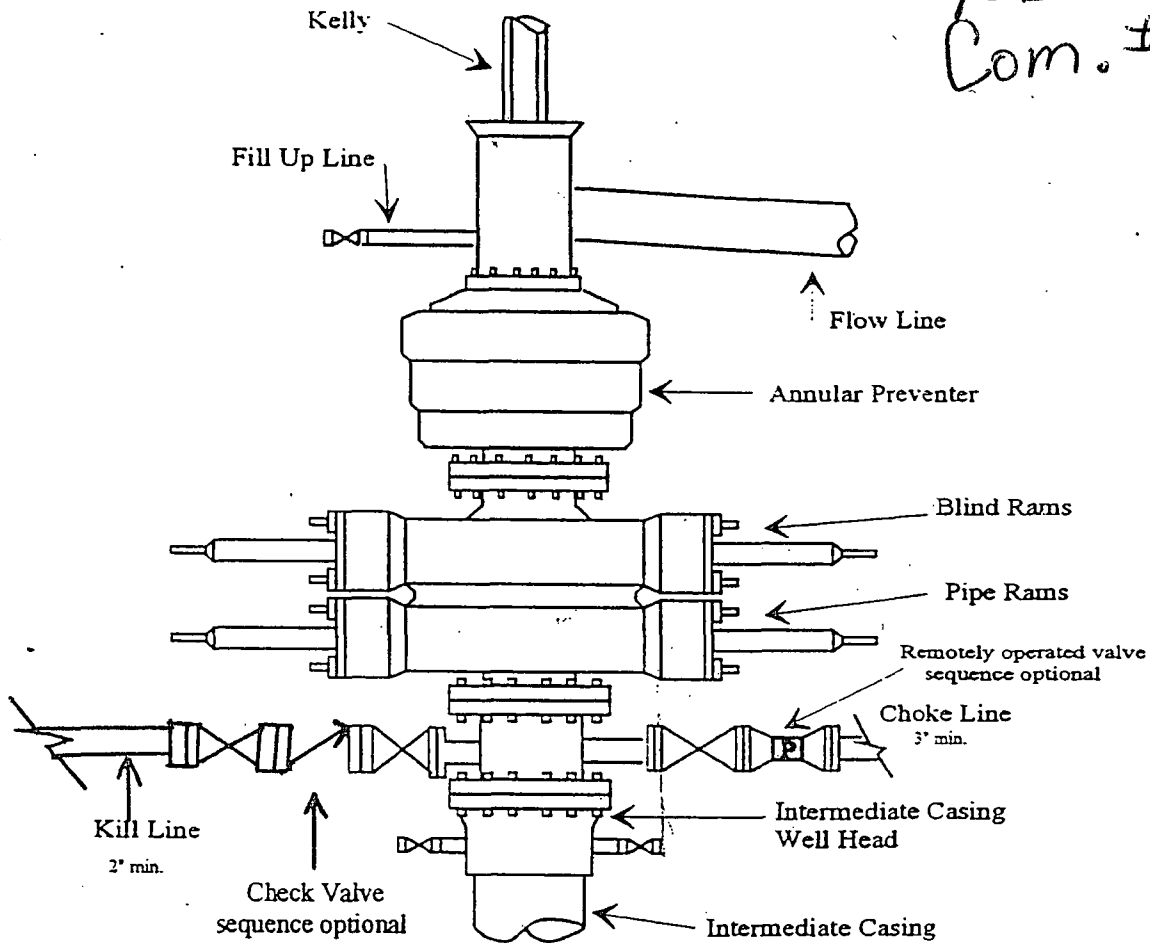


Yates Petroleum Corporation

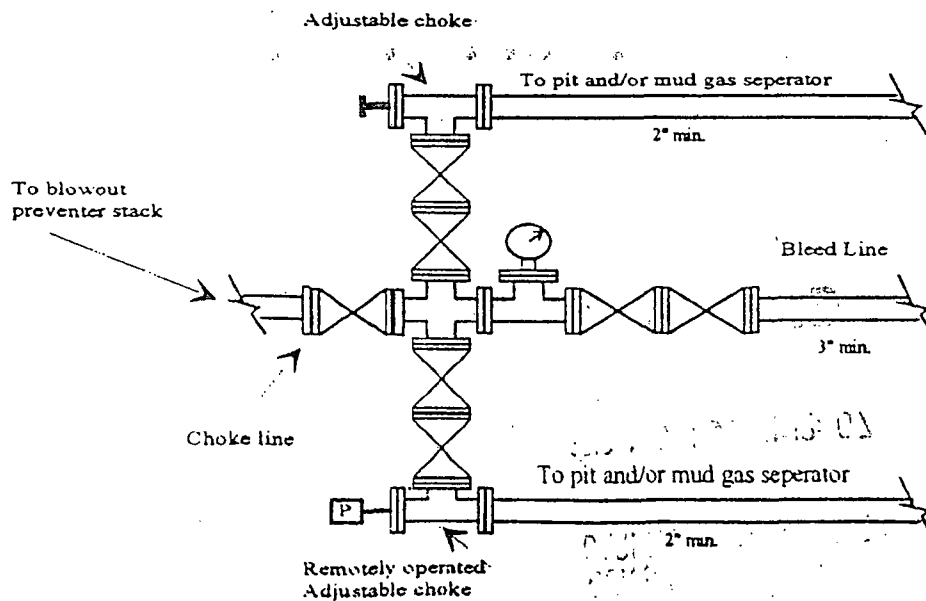
BOP-4

Typical 5,000 psi Pressure System
Schematic
Annular with Double Ram Preventer Stack

LINK BKT
FEDERAL
Com. #4H

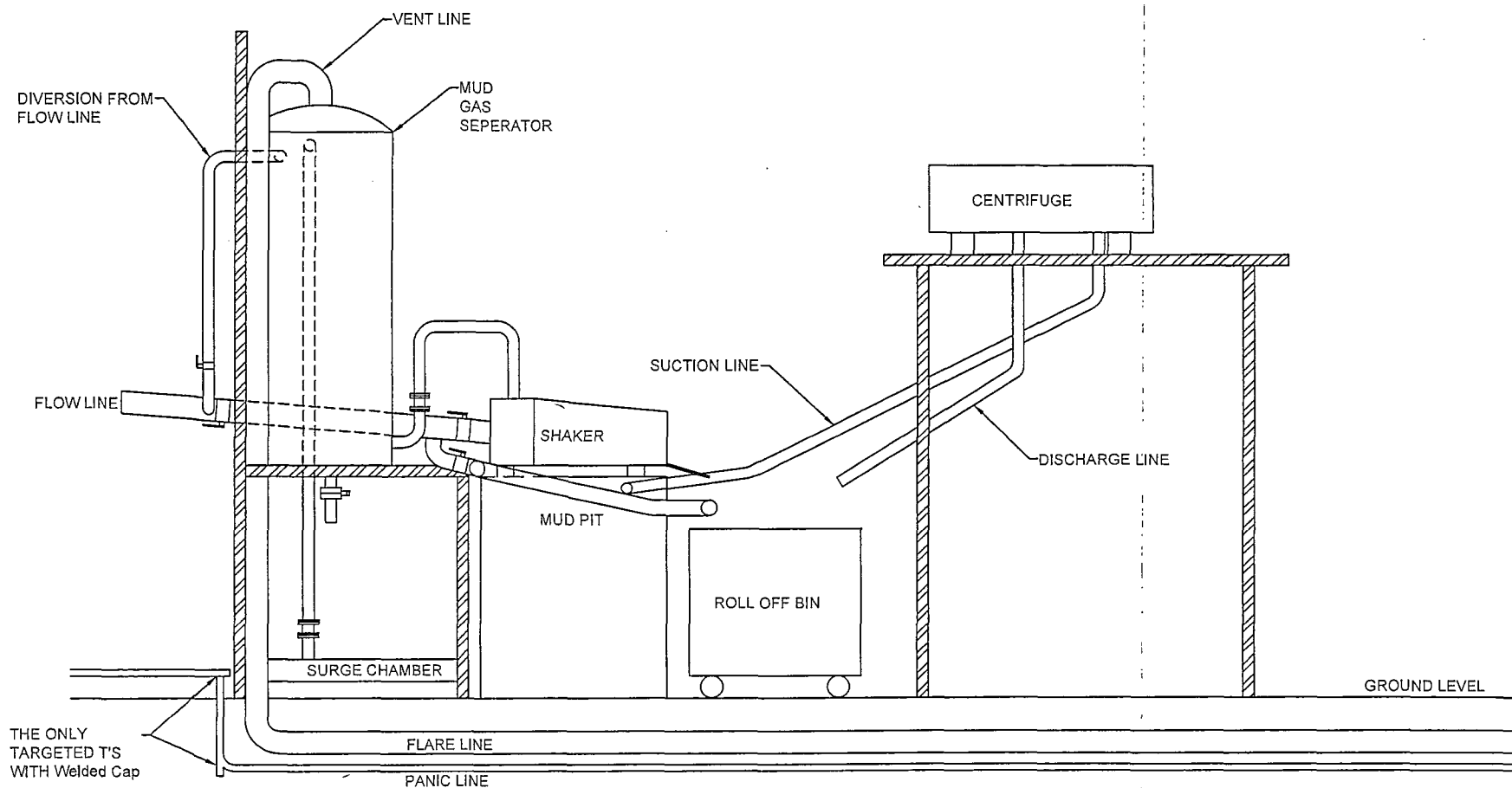


Typical 5,000 psi choke manifold assembly with at least these minimum features



YATES PETROLEUM CORPORATION

Piping from Choke Manifold to the Closed Loop Drilling Mud System



The flare discharge must be 100' from wellhead for non H2S wells and 150' from wellhead for wells expected to encounter H2S.

Yates Petroleum Corporation

105 S. Fourth Street
Artesia, NM 88210

Hydrogen Sulfide (H₂S) Contingency Plan

For

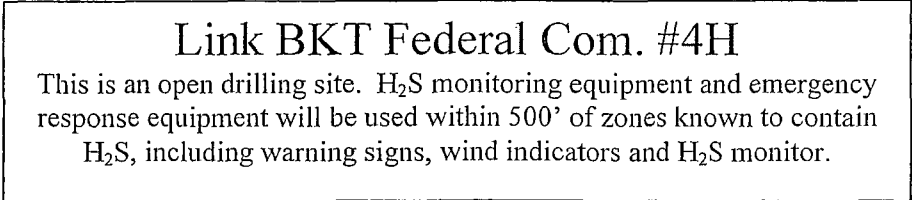
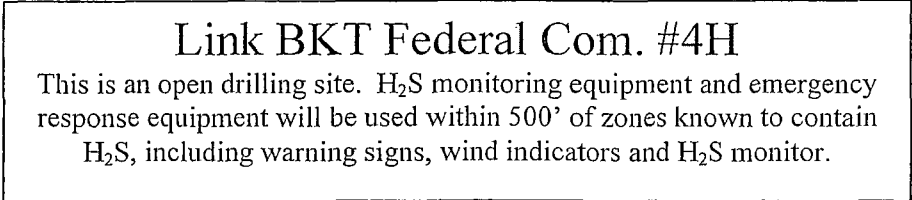
Link BKT Federal Com. #4H
1880' FSL and 240' FEL Surface Hole Location
Section 18, T-16S, R-25E
Eddy County NM

Link BKT Federal Com. #4H

This is an open drilling site. H₂S monitoring equipment and emergency response equipment will be used within 500' of zones known to contain H₂S, including warning signs, wind indicators and H₂S monitor.

Link BKT Federal Com. #4H

This is an open drilling site. H₂S monitoring equipment and emergency response equipment will be used within 500' of zones known to contain H₂S, including warning signs, wind indicators and H₂S monitor.



Link BKT Federal Com. #4H

This is an open drilling site. H₂S monitoring equipment and emergency response equipment will be used within 500' of zones known to contain H₂S, including warning signs, wind indicators and H₂S monitor.

Emergency Procedures

In the case of a release of gas containing H₂S, the first responder(s) must isolate the area and prevent entry by other persons into the 100 ppm ROE. Additionally the first responder(s) must evacuate any public places encompassed by the 100 ppm ROE. First responder(s) must take care not to injure themselves during this operation. Company and/or local officials must be contacted to aid in this operation. Evacuation of the public should be beyond the 100 ppm ROE.

All responders must have training in the detection of H₂S, measures for protection against the gas, equipment used for protection and emergency response. Additionally, responders must be equipped with H₂S monitors and air packs in order to control the release. Use the "buddy system" to ensure no injuries during the response.

Ignition of Gas Source

Should control of the well be considered lost and ignition considered, take care to protect against exposure to Sulfur Dioxide (SO₂). Intentional ignition must be coordinated with the NMOCD and local officials. Additionally the NM State Police may become involved. NM State Police shall be the Incident Command on scene of any major release. Take care to protect downwind whenever there is an ignition of the gas

Characteristics of H₂S and SO₂

Common Name	Chemical Formula	Specific Gravity	Threshold Limit	Hazardous Limit	Lethal Concentration
Hydrogen Sulfide	H ₂ S	1.189 Air = 1	10 ppm	100 ppm/hr	600 ppm
Sulfur Dioxide	SO ₂	2.21 Air = 1	2 ppm	N/A	1000 ppm

Contacting Authorities

YPC personnel must liaison with local and state agencies to ensure a proper response to a major release. Additionally, the OCD must be notified of the release as soon as possible but no later than 4 hours. Agencies will ask for information such as type and volume of release, wind direction, location of release, etc. Be prepared with all information available. The following call list of essential and potential responders has been prepared for use during a release. YPC Company response must be in coordination with the State of New Mexico's 'Hazardous Materials Emergency Response Plan' (HMER)

Yates Petroleum Corporation Phone Numbers

YPC Office	(505) 748-1471
Paul Ragsdale/Operations Manager.....	(505) 748-4520
Ron Beasley/Production Manager	(505) 748-4210
Wade Bennett/Prod Superintendent	(505) 748-4236
Mike Lankin/Drilling	(505) 748-4222
Paul Hanes/Prod. Foreman/Roswell	(505) 624-2805
Tim Bussell/Drilling Superintendent.....	(505) 748-4221
Artesia Answering Service	(505) 748-4302
(During non-office hours)	

Agency Call List

Eddy County (505)

Artesia

State Police	746-2703
City Police.....	746-2703
Sheriff's Office	746-9888
Ambulance	911
Fire Department	746-2701
LEPC (Local Emergency Planning Committee)	746-2122
NMOCD.....	748-1283

Carlsbad

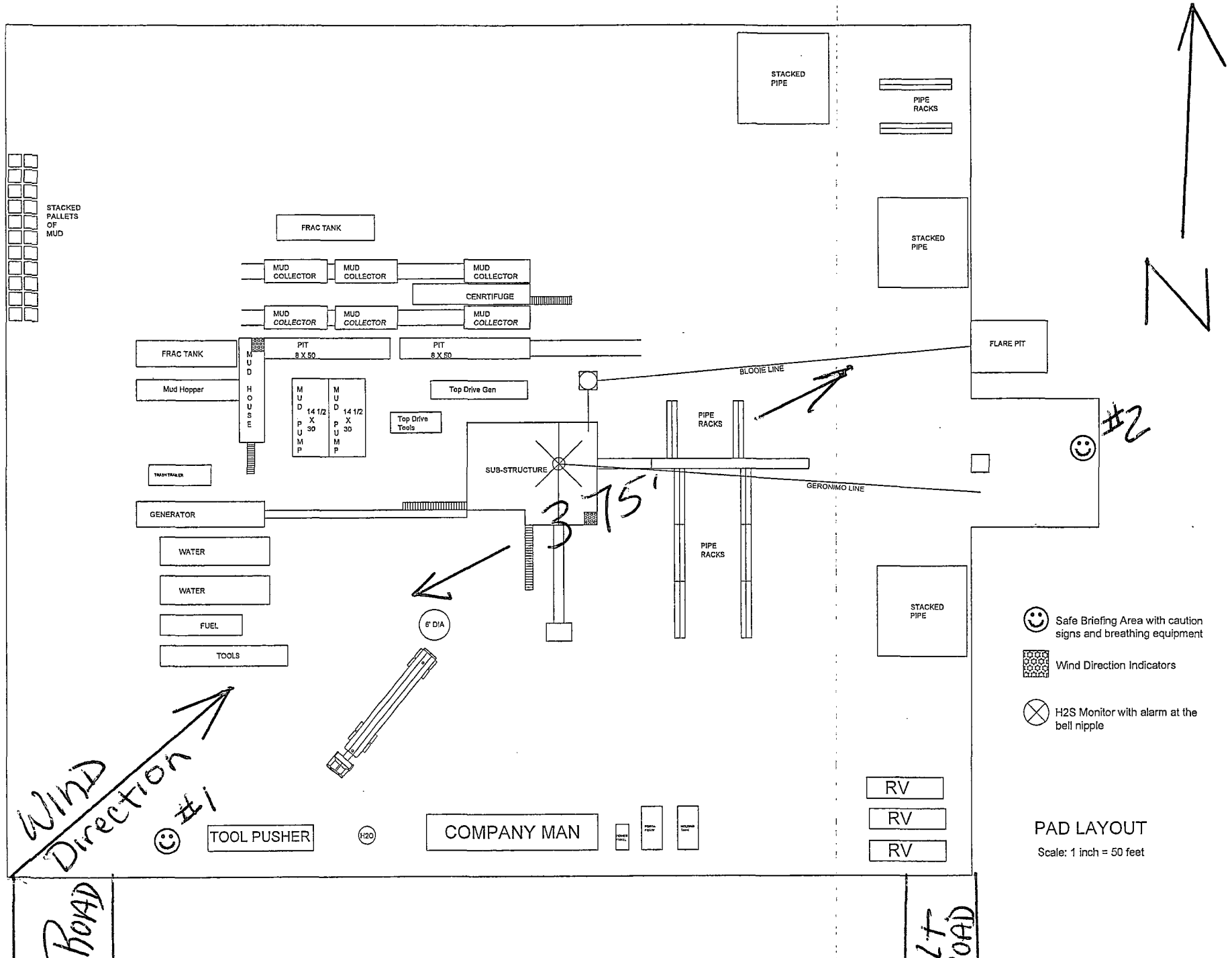
State Police	885-3137
City Police.....	885-2111
Sheriff's Office.....	887-7551
Ambulance	911
Fire Department	885-2111
LEPC (Local Emergency Planning Committee).....	887-3798
US Bureau of Land Management.....	887-6544

New Mexico Emergency Response Commission (Santa Fe)	(505) 476-9600
24 HR	(505) 827-9126
New Mexico State Emergency Operations Center.....	(505) 476-9635
National Emergency Response Center (Washington, DC)	...(800) 424-8802

Other

Boots & Coots IWC	1-800-256-9688 or (281) 931-8884
Cudd Pressure Control.....	(915) 699-0139 or (915) 563-3356
Halliburton	(505) 746-2757
B. J. Services.....	(505) 746-3569
Flight For Life -4000 24th St, Lubbock, TX	(806) 743-9911
Aerocare -Rr 3 Box 49f, Lubbock, TX	(806) 747-8923
Med Flight Air Amb 2301 Yale Blvd SE #D3, Albuq, NM	(505) 842-4433
S B Air Med Svc 2505 Clark Carr Loop SE, Albuq, NM	(505) 842-4949

YATES PETROLEUM CORPORATION



Yates Petroleum Corporation

Hydrogen Sulfide Drilling Operation Plan

I. HYDROGEN SULFIDE TRAINING

All personnel, whether regularly assigned, contracted, or employed on an unscheduled basis, will receive training from a qualified instructor in the following areas prior to commencing drilling operations on this well:

1. The hazards and characteristics of hydrogen sulfide (H₂S).
2. The proper use and maintenance of personal protective equipment and life support systems.
3. The proper use of H₂S detectors, alarms, warning systems, briefing areas, evacuation procedures, and prevailing winds.
4. The proper techniques for first aid and rescue procedures.

In addition, supervisory personnel will be trained in the following areas:

1. The effects of H₂S on metal components. If high tensile tubular are to be used, personnel will be trained in their special maintenance requirements.
2. Corrective action and shut-in procedures when drilling or reworking a well and blowout prevention and well control procedures.
3. The contents and requirements of the H₂S Drilling Operations Plan and H₂S Contingency Plan.

There will be an initial training session just prior to encountering a known or probable H₂S zone (within 3 days or 500 feet) and weekly H₂S and well control drills for all personnel in each crew. The initial training session shall include a review of the site specific H₂S Drilling Operation Plan and the H₂S Contingency Plan. **The location of this well does not require a Public Protection Plan.**

II. H2S SAFETY EQUIPMENT AND SYSTEMS

NOTE: All H2S safety equipment and systems will be installed, tested, and operational when drilling reaches a depth of 500 feet above, or three days prior to penetrating the first zone containing or reasonably expected to contain H2S.

1. Well Control Equipment:

- A. Flare line
- B. Choke manifold
- C. Blind rams and pipe rams to accommodate all pipe sizes with properly sized closing unit
- D. Auxiliary equipment may include if applicable: annular preventer & rotating head.

2. Protective equipment for essential personnel:

- A. Mark II Survive Air (or equivalent) 30-minute units located in the doghouse and at briefing areas, as indicated on well site diagram.

3. H2S detection and monitoring equipment:

- A. 3 portable H2S monitors positioned at: Shale Shaker, Bell Nipple, and Rig Floor. These units have warning lights and audible sirens when H2S levels of 10 PPM are reached.

4. Visual warning systems:

- A. Wind direction indicators as shown on well site diagram (attached).
- B. Caution/Danger signs (attached) shall be posted on roads providing direct access to location. Signs will be painted with high visibility yellow with black lettering of a sufficient size to be readable at a reasonable distance from the immediate location. Bilingual signs will be used, when appropriate. See example attached.

5. Mud program:

- A. The mud program has been designed to minimize the volume of H2S circulated to the surface. Proper mud weight, safe drilling practices and the use of H2S scavengers will minimize hazards when penetrating H2S bearing zones.

6. Metallurgy:

- A. All drill strings, casings, tubing, wellhead, blowout preventer, drilling spool, kill lines, choke manifold and lines, and valves shall be suitable for H2S service.
- B. All elastomers used for packing and seals shall be H2S trim.

7. Communication:

- A. Cellular communications in company vehicles.
- B. Land line (telephone) communication at the Office.


8. Well testing:

- A. There will be no drill stem testing.

EXHIBIT

DANGER
POISONS GAS
HYDROGEN SULFIDE
NORMAL OPERATIONS


(GREEN)

 **CAUTION POTENTIAL DANGER**

(YELLOW)

DANGER POISONS GAS ENCOUNTERED

(RED) **AUTHORIZED PERSONAL ONLY.**

 **LOCATION SECURED.**

1-575-746-1096
1-877-879-8899

EDDY COUNTY EMERGENCY NUMBERS

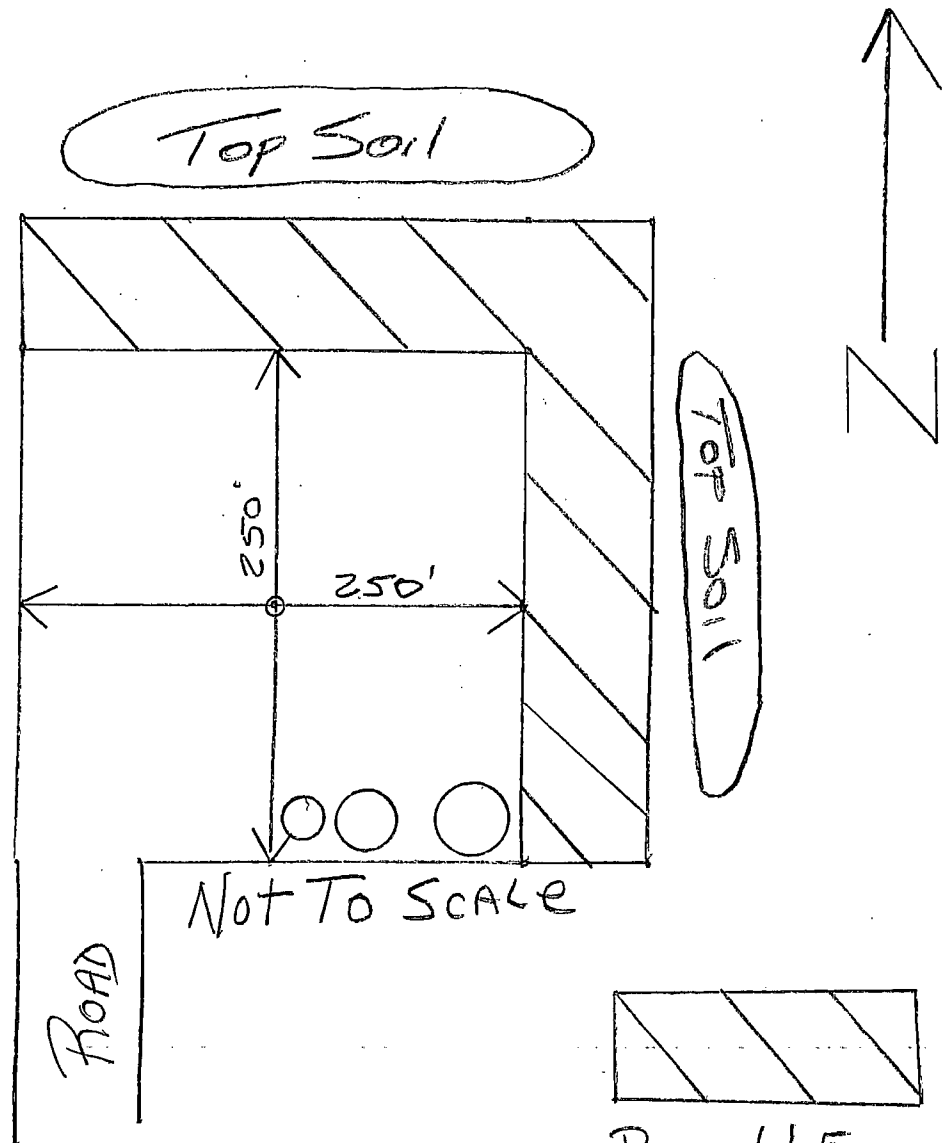
ARTESIA FIRE DEPT. 575-746-5050
9308
ARTESIA POLICE DEPT. 575-746-5000
9285
EDDY CO. SHERIFF DEPT. 575-746-9888
396-1196

LEA COUNTY EMERGENCY

HOBBS FIRE DEPT. 575-397-
HOBBS POLICE DEPT. 575-397-
LEA CO. SHERIFF DEPT. 575-

Reclamation PLAT

LINK BKT
FED Com 4H



Final Reclamation
May Look Different
Than This PLAT.

Possible
Reclaimed Area

PECOS DISTRICT CONDITIONS OF APPROVAL

OPERATOR'S NAME:	Yates Petroleum Corp
LEASE NO.:	NM010266
WELL NAME & NO.:	4H Link BKT Fed Com
SURFACE HOLE FOOTAGE:	1880'/ FSL & 240'/ FEL
BOTTOM HOLE FOOTAGE:	1880'/ FSL & 660'/ FEL, Sec. 17
LOCATION:	Section 18, T.16 S., R.25 E., NMPM
COUNTY:	Eddy County, New Mexico

TABLE OF CONTENTS

Standard Conditions of Approval (COA) apply to this APD. If any deviations to these standards exist or special COAs are required, the section with the deviation or requirement will be checked below.

- ☐ **General Provisions**
- ☐ **Permit Expiration**
- ☐ **Archaeology, Paleontology, and Historical Sites**
- ☐ **Noxious Weeds**
- ☒ **Special Requirements**
 - Aplomado Falcon
 - Communitization Agreement
- ☐ **Construction**
 - Notification
 - Topsoil
 - Closed Loop System
 - Federal Mineral Material Pits
 - Well Pads
 - Roads
- ☐ **Road Section Diagram**
- ☒ **Drilling**
 - Logging Requirements
 - Waste Material and Fluids
- ☐ **Production (Post Drilling)**
 - Well Structures & Facilities
 - Pipelines
 - Electric Lines
- ☐ **Interim Reclamation**
- ☐ **Final Abandonment & Reclamation**