

District I  
1625 N. French Dr., Hobbs, NM 88240  
District II  
1301 W. Grand Avenue, Artesia, NM 88210  
District III  
1000 Rio Brazos Road, Aztec, NM 87410  
District IV  
1220 S. St. Francis Dr., Santa Fe, NM 87505

State of New Mexico  
Energy Minerals and Natural Resources  
Department  
Oil Conservation Division  
1220 South St. Francis Dr.  
Santa Fe, NM 87505

Form C-144 CLEZ  
July 21, 2008

For closed-loop systems that only use above ground steel tanks or haul-off bins and propose to implement waste removal for closure, submit to the appropriate NMOC District Office.

## Closed-Loop System Permit or Closure Plan Application

(that only use above ground steel tanks or haul-off bins and propose to implement waste removal for closure)

Type of action: ☒ Permit ☐ Closure

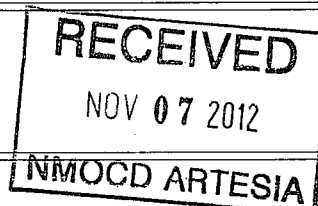
**Instructions:** Please submit one application (Form C-144 CLEZ) per individual closed-loop system request. For any application request other than for a closed-loop system that only use above ground steel tanks or haul-off bins and propose to implement waste removal for closure, please submit a Form C-144.

Please be advised that approval of this request does not relieve the operator of liability should operations result in pollution of surface water, ground water or the environment. Nor does approval relieve the operator of its responsibility to comply with any other applicable governmental authority's rules, regulations or ordinances.

1.  
Operator: Yates Petroleum Corporation OGRID #: 025575  
Address: 105 South 4<sup>th</sup> Street, Artesia, NM 88210  
Facility or well name: Link BKT Federal Com. #4H  
API Number: 30-015-41104 OCD Permit Number: 213981  
U/L or Qtr/Qtr I Section 18 Township 16S Range 25E County: Eddy  
Center of Proposed Design: Latitude N. 32.920963 Longitude W. 104.516980 NAD: ☒ 1927 ☐ 1983  
Surface Owner: ☒ Federal ☐ State ☐ Private ☐ Tribal Trust or Indian Allotment

2.  
☒ **Closed-loop System:** Subsection H of 19.15.17.11 NMAC  
Operation: ☒ Drilling a new well ☐ Workover or Drilling (Applies to activities which require prior approval of a permit or notice of intent) ☐ P&A  
☐ Above Ground Steel Tanks or ☒ Haul-off Bins

3.  
**Signs:** Subsection C of 19.15.17.11 NMAC  
☐ 12"x 24", 2" lettering, providing Operator's name, site location, and emergency telephone numbers  
☒ Signed in compliance with 19.15.3.103 NMAC



4.  
**Closed-loop Systems Permit Application Attachment Checklist:** Subsection B of 19.15.17.9 NMAC  
**Instructions:** Each of the following items must be attached to the application. Please indicate, by a check mark in the box, that the documents are attached.  
☒ Design Plan - based upon the appropriate requirements of 19.15.17.11 NMAC  
☒ Operating and Maintenance Plan - based upon the appropriate requirements of 19.15.17.12 NMAC  
☒ Closure Plan (Please complete Box 5) - based upon the appropriate requirements of Subsection C of 19.15.17.9 NMAC and 19.15.17.13 NMAC  
☐ Previously Approved Design (attach copy of design) API Number: \_\_\_\_\_  
☐ Previously Approved Operating and Maintenance Plan API Number: \_\_\_\_\_

5.  
**Waste Removal Closure For Closed-loop Systems That Utilize Above Ground Steel Tanks or Haul-off Bins Only:** (19.15.17.13.D NMAC)  
**Instructions:** Please identify the facility or facilities for the disposal of liquids, drilling fluids and drill cuttings. Use attachment if more than two facilities are required.  
Disposal Facility Name: Gandy Marley Disposal Facility Permit Number: NM-01-0019  
Disposal Facility Name: Lea Land Farm Disposal Facility Permit Number: WM-1-035  
Disposal Facility Name: CRI Disposal Facility Permit Number: R-9166  
Disposal Facility Name: Sundance Services Inc. Disposal Facility Permit Number: NM-01-0003

Will any of the proposed closed-loop system operations and associated activities occur on or in areas that will not be used for future service and operations?  
☐ Yes (If yes, please provide the information below) ☒ No

Required for impacted areas which will not be used for future service and operations:

- ☐ Soil Backfill and Cover Design Specifications - based upon the appropriate requirements of Subsection H of 19.15.17.13 NMAC  
☐ Re-vegetation Plan - based upon the appropriate requirements of Subsection I of 19.15.17.13 NMAC  
☐ Site Reclamation Plan - based upon the appropriate requirements of Subsection G of 19.15.17.13 NMAC

6. **Operator Application Certification:**

I hereby certify that the information submitted with this application is true, accurate and complete to the best of my knowledge and belief.

Name (Print): Cy Cowan Title: Land Regulatory Agent  
Signature: [Signature] Date: 10/29/12  
e-mail address: cy@vatespetroleum.com Telephone: 575-748-4372

7. **OCD Approval:** ☒ Permit Application (including closure plan) ☐ Closure Plan (only)

OCD Representative Signature: [Signature] Approval Date: 2/15/13  
Title: Dr. J. H. Sewison OCD Permit Number: 213981

8. **Closure Report (required within 60 days of closure completion):** Subsection K of 19.15.17.13 NMAC

*Instructions: Operators are required to obtain an approved closure plan prior to implementing any closure activities and submitting the closure report. The closure report is required to be submitted to the division within 60 days of the completion of the closure activities. Please do not complete this section of the form until an approved closure plan has been obtained and the closure activities have been completed.*

☐ Closure Completion Date: \_\_\_\_\_

9. **Closure Report Regarding Waste Removal Closure For Closed-loop Systems That Utilize Above Ground Steel Tanks or Haul-off Bins Only:**

*Instructions: Please indentify the facility or facilities for where the liquids, drilling fluids and drill cuttings were disposed. Use attachment if more than two facilities were utilized.*

Disposal Facility Name: \_\_\_\_\_ Disposal Facility Permit Number: \_\_\_\_\_

Disposal Facility Name: \_\_\_\_\_ Disposal Facility Permit Number: \_\_\_\_\_

Were the closed-loop system operations and associated activities performed on or in areas that *will not* be used for future service and operations?

☐ Yes (If yes, please demonstrate compliance to the items below) ☐ No

*Required for impacted areas which will not be used for future service and operations:*

- ☐ Site Reclamation (Photo Documentation)  
☐ Soil Backfilling and Cover Installation  
☐ Re-vegetation Application Rates and Seeding Technique

10. **Operator Closure Certification:**

I hereby certify that the information and attachments submitted with this closure report is true, accurate and complete to the best of my knowledge and belief. I also certify that the closure complies with all applicable closure requirements and conditions specified in the approved closure plan.

Name (Print): \_\_\_\_\_ Title: \_\_\_\_\_  
Signature: \_\_\_\_\_ Date: \_\_\_\_\_  
e-mail address: \_\_\_\_\_ Telephone: \_\_\_\_\_

1625 N. French Dr., Hobbs, NM 88240

# DISTRICT II

1301 W. Grand Avenue, Artesia, NM 88210

# DISTRICT III

1000 Rio Brazos Rd., Aztec, NM 87410

# DISTRICT IV

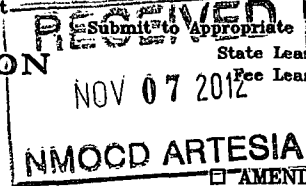
1220 S. St. Francis Dr., Santa Fe, NM 87505

State of New Mexico  
Energy, Minerals and Natural Resources Department

Revised October 12, 2005

## OIL CONSERVATION DIVISION

1220 South St. Francis Dr.  
Santa Fe, New Mexico 87505



### WELL LOCATION AND ACREAGE DEDICATION PLAT

API Number	Pool Code	Pool Name
		Cottonwood Creek, Wolfcamp
Property Code	Property Name	Well Number
025575	LINK "BKT" FEDERAL COM	4H
OGRID No.	Operator Name	Elevation
025575	YATES PETROLEUM CORP.	3554'

#### Surface Location

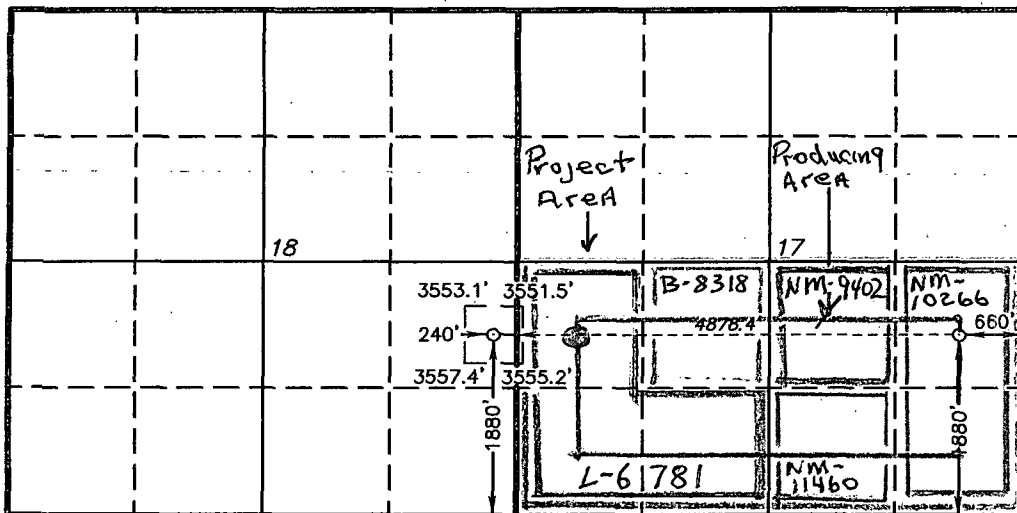
UL or lot No.	Section	Township	Range	Lot Idn	Feet from the	North/South line	Feet from the	East/West line	County
I	18	16 S	25 E		1880	SOUTH	240	EAST	EDDY

#### Bottom Hole Location If Different From Surface

UL or lot No.	Section	Township	Range	Lot Idn	Feet from the	North/South line	Feet from the	East/West line	County
I	17	16 S	25 E		1880	SOUTH	660	EAST	EDDY

Dedicated Acres	Joint or Infill	Consolidation Code	Order No.
320			

NO ALLOWABLE WILL BE ASSIGNED TO THIS COMPLETION UNTIL ALL INTERESTS HAVE BEEN CONSOLIDATED  
OR A NON-STANDARD UNIT HAS BEEN APPROVED BY THE DIVISION



Penetration  
Point  
1880' FSL + 660' FWL

**SURFACE LOCATION**  
Lat - N32°55'15.47"  
Long - W104°31'01.13"  
SPC- N.: 698829.985  
E.: 484985.649  
(NAD-83)

**BOTTOM HOLE LOCATION**  
Lat - N32°55'15.36"  
Long - W104°30'03.89"  
SPC- N.: 698810.737  
E.: 489863.961  
(NAD-83)

#### OPERATOR CERTIFICATION

I hereby certify that the information contained herein is true and complete to the best of my knowledge and belief, and that this organization either owns a working interest or unleased mineral interest in the land including the proposed bottom hole location pursuant to a contract with an owner of such a mineral or working interest, or to a voluntary pooling agreement or a compulsory pooling order heretofore entered by the division.

*Cy Cowan* 10/29/12  
Signature Date

Cy Cowan  
Printed Name

#### SURVEYOR CERTIFICATION

I hereby certify that the well location shown on this plat was plotted from field notes of actual surveys made by me or under my supervision, and that the same is true and correct to the best of my belief.

MAY 8, 2008

Date Surveyed  
Signature & Seal of Professional Surveyor

*Gary L. Jones*  
Signature  
Professional Surveyor No. 9293

Certificate No. Gary L. Jones 7977

BASIN SURVEYS