

District I  
1625 N. French Dr., Hobbs, NM 88240  
Phone: (575) 393-6161 Fax: (575) 393-0720  
District II  
811 S. First St., Artesia, NM 88210  
Phone: (505) 748-1283 Fax: (575) 748-9720  
District III  
1000 Rio Brazos Road, Aztec, NM 87410  
Phone: (505) 334-6178 Fax: (505) 334-6170  
District IV  
1220 S. St. Francis Dr., Santa Fe, NM 87505  
Phone: (505) 476-3460 Fax: (505) 476-3462

RECEIVED

State of New Mexico FEB 21 2013  
Energy, Minerals & Natural Resources Department  
OIL CONSERVATION DIVISION  
1220 South St. Francis Dr.  
Santa Fe, NM 87505

Form C-102  
Revised August 1, 2011  
Submit one copy to appropriate  
District Office

☐ AMENDED REPORT

APD Attachment

WELL LOCATION AND ACREAGE DEDICATION PLAT

<sup>1</sup> API Number 30-015-41135	<sup>2</sup> Pool Code 24330	<sup>3</sup> Pool Name Northwest Fenton, Delaware, NW
<sup>4</sup> Property Code 38927	<sup>5</sup> Property Name LONE TREE DRAW "13" STATE COM	<sup>6</sup> Well Number 5H
<sup>7</sup> OGRID No. 6137	<sup>8</sup> Operator Name DEVON ENERGY PRODUCTION COMPANY, L.P.	<sup>9</sup> Elevation 3164.8

<sup>10</sup> Surface Location

UL or lot no.	Section	Township	Range	Lot Idn	Feet from the	North/South line	Feet from the	East/West line	County
A	13	21 S	27 E		150	NORTH	990	EAST	EDDY

<sup>11</sup> Bottom Hole Location If Different From Surface

UL or lot no.	Section	Township	Range	Lot Idn	Feet from the	North/South line	Feet from the	East/West line	County
P	13	21 S	27 E		330	SOUTH	800	EAST	EDDY

<sup>12</sup> Dedicated Acres	<sup>13</sup> Joint or Infill	<sup>14</sup> Consolidation Code	<sup>15</sup> Order No.
160			

No allowable will be assigned to this completion until all interests have been consolidated or a non-standard unit has been approved by the division.

<p>S89°39'37"W 2682.92 FT</p> <p>NW CORNER SEC. 13 LAT. = 32.4875564°N LONG. = 104.1518460°W NMSP EAST (FT) N = 541151.41 E = 597296.70</p> <p>W Q CORNER SEC. 13 LAT. = 32.4802578°N LONG. = 104.1518272°W NMSP EAST (FT) N = 538496.22 E = 597307.03</p> <p>SW CORNER SEC. 13 LAT. = 32.4729694°N LONG. = 104.1517858°W NMSP EAST (FT) N = 535844.76 E = 597324.31</p>		<p>S89°38'05"W 2684.65 FT</p> <p>N Q CORNER SEC. 13 LAT. = 32.4875872°N LONG. = 104.1431449°W NMSP EAST (FT) N = 541167.32 E = 599979.57</p> <p>LONE TREE DRAW "13" STATE COM #5H ELEV. = 3164.8' LAT. = 32.4871961°N (NAD83) LONG. = 104.1376477°W NMSP EAST (FT) N = 541028.09 E = 601674.82</p> <p>S Q CORNER SEC. 13 LAT. = 32.4730671°N LONG. = 104.1431031°W NMSP EAST (FT) N = 535884.98 E = 600001.86</p>		<p>S89°38'05"W 2684.65 FT</p> <p>NE CORNER SEC. 13 LAT. = 32.4876208°N LONG. = 104.1344381°W NMSP EAST (FT) N = 541184.43 E = 602664.17</p> <p>E Q CORNER SEC. 13 LAT. = 32.4803890°N LONG. = 104.1344261°W NMSP EAST (FT) N = 538553.54 E = 602672.78</p> <p>SE CORNER SEC. 13 LAT. = 32.4731639°N LONG. = 104.1344162°W NMSP EAST (FT) N = 535925.08 E = 602680.72</p>	
<p>2655.22 FT</p> <p>2651.51 FT</p>		<p>2650.94 FT</p> <p>2628.44 FT</p>			
<p>2677.85 FT</p>		<p>2679.16 FT</p>			

<sup>17</sup> OPERATOR CERTIFICATION

I hereby certify that the information contained herein is true and complete to the best of my knowledge and belief, and that this organization either owns a working interest or unleased mineral interest in the land including the proposed bottom hole location or has a right to drill this well at this location pursuant to a contract with an owner of such a mineral or working interest, or to a voluntary pooling agreement or a compulsory pooling order heretofore entered by the division.

Signature: *Judith A. Barnett* Date: 2/20/13

Printed Name: Judith A. Barnett, Regulatory Specialist

E-mail Address: Judith.Barnett@dmn.com

<sup>18</sup> SURVEYOR CERTIFICATION

I hereby certify that the well location shown on this plat was plotted from field notes of actual surveys made by me or under my supervision and that the same is true and correct to the best of my belief.

JANUARY 31, 2013

Date of Survey: *FILED IN FIELD AR-AMHLO, PLS 12797*

Signature and Seal of Professional Surveyor: *Frank J. Barnello*

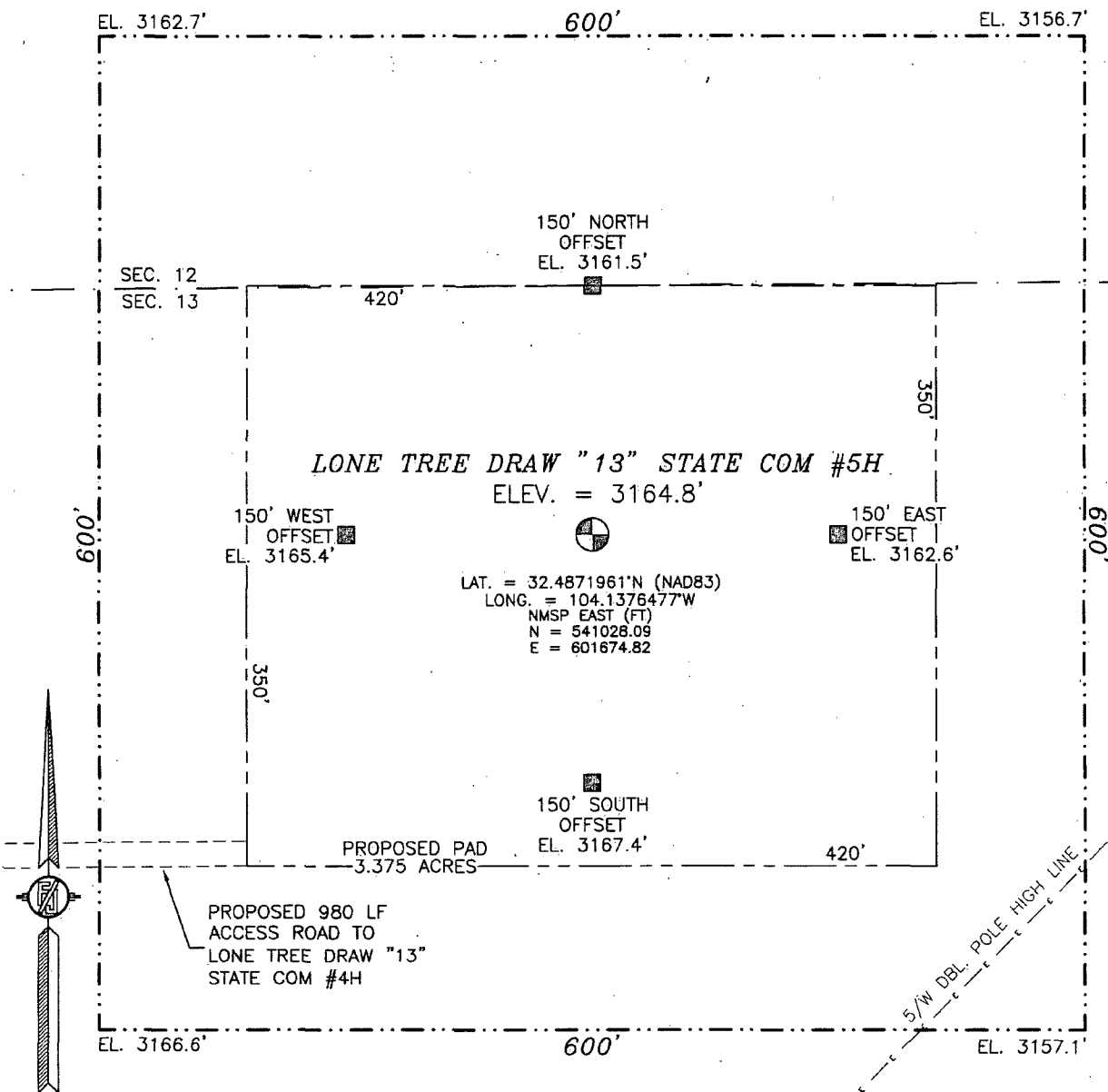
Certificate Number: FILED IN FIELD AR-AMHLO, PLS 12797

SURVEY NO. 1354

FILED IN FIELD AR-AMHLO, PLS 12797

SURVEY NO. 1354

SECTION 13, TOWNSHIP 21 SOUTH, RANGE 27 EAST, N.M.P.M.  
EDDY COUNTY, STATE OF NEW MEXICO



010 50 100 200

SCALE 1" = 100'

**DIRECTIONS TO LOCATION**

FROM CR 500 (RAINS) AND CR 237 (ANGEL RANCH ROAD) AND CALICHE LEASE ROAD GO NORTHWEST ON CALICHE LEASE ROAD 0.1 MILE, TURN RIGHT AND GO SOUTHEAST 0.6 MILES, BEND LEFT AND GO EAST 1.0 MILES, TURN RIGHT AND GO SOUTH 0.6 MILES, TURN LEFT AND GO EAST 0.7 MILES, TURN LEFT AND GO NORTH 0.15 MILES, TURN RIGHT AND GO EAST 0.45 MILES TO EXISTING PAD FOR LONE TREE DRAW "13" STATE COM #4H WELL AND FROM SOUTHEAST CORNER OF EXISTING PAD FOLLOW PROPOSED ROAD SURVEY FLAGS EAST 980 FT TO THE SOUTHWEST CORNER OF PROPOSED PAD FOR THIS LOCATION.

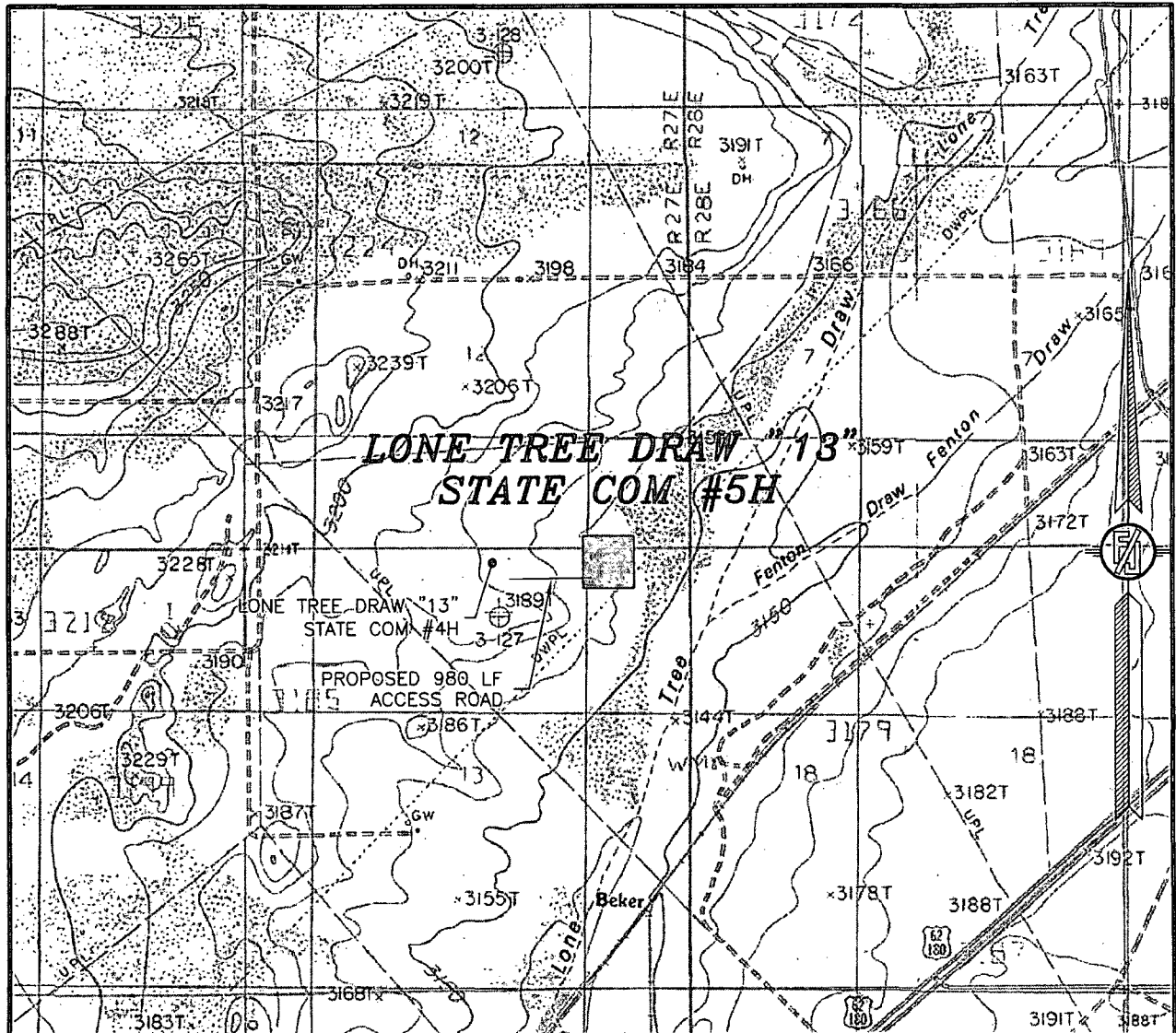
DEVON ENERGY PRODUCTION COMPANY, L.P.  
**LONE TREE DRAW "13" STATE COM #5H**  
LOCATED 150 FT. FROM THE NORTH LINE  
AND 990 FT. FROM THE EAST LINE OF  
SECTION 13, TOWNSHIP 21 SOUTH,  
RANGE 27 EAST, N.M.P.M.  
EDDY COUNTY, STATE OF NEW MEXICO

JANUARY 31, 2013

SURVEY NO. 1554

MADRON SURVEYING, INC. 301 SOUTH CANAL (575) 234-3341 CARLSBAD, NEW MEXICO

SECTION 13, TOWNSHIP 21 SOUTH, RANGE 27 EAST, N.M.P.M.  
EDDY COUNTY, STATE OF NEW MEXICO  
LOCATION VERIFICATION MAP



USGS QUAD MAP:  
CARLSBAD EAST

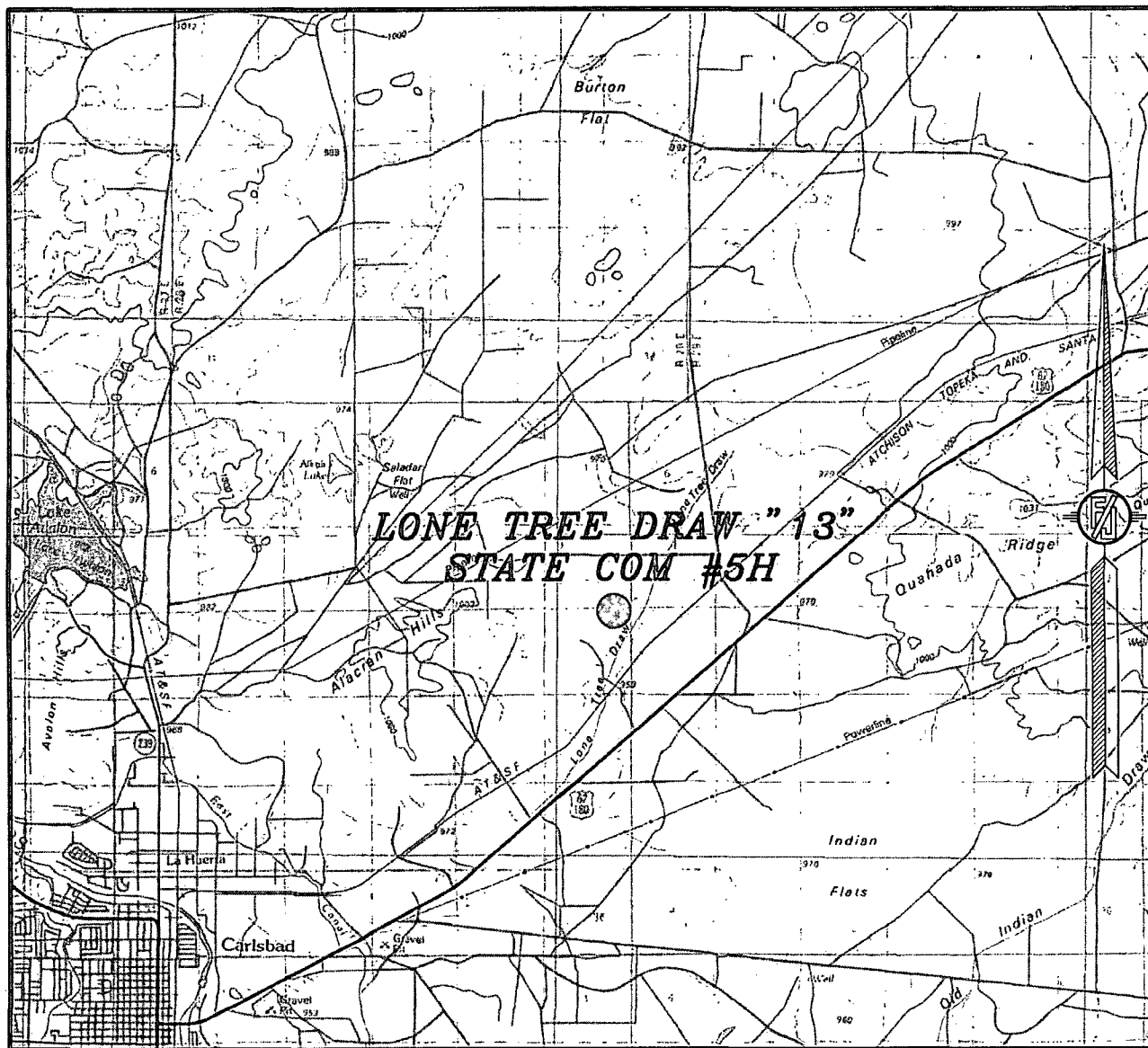
NOT TO SCALE

DEVON ENERGY PRODUCTION COMPANY, L.P.  
**LONE TREE DRAW "13" STATE COM #5H**  
LOCATED 150 FT. FROM THE NORTH LINE  
AND 990 FT. FROM THE EAST LINE OF  
SECTION 13, TOWNSHIP 21 SOUTH,  
RANGE 27 EAST, N.M.P.M.  
EDDY COUNTY, STATE OF NEW MEXICO

JANUARY 31, 2013

MADRON SURVEYING, INC. 301 SOUTH CANAL (575) 234-3341 CARLSBAD, NEW MEXICO SURVEY NO. 1554

SECTION 13, TOWNSHIP 21 SOUTH, RANGE 27 EAST, N.M.P.M.  
 EDDY COUNTY, STATE OF NEW MEXICO  
 VICINITY MAP



NOT TO SCALE

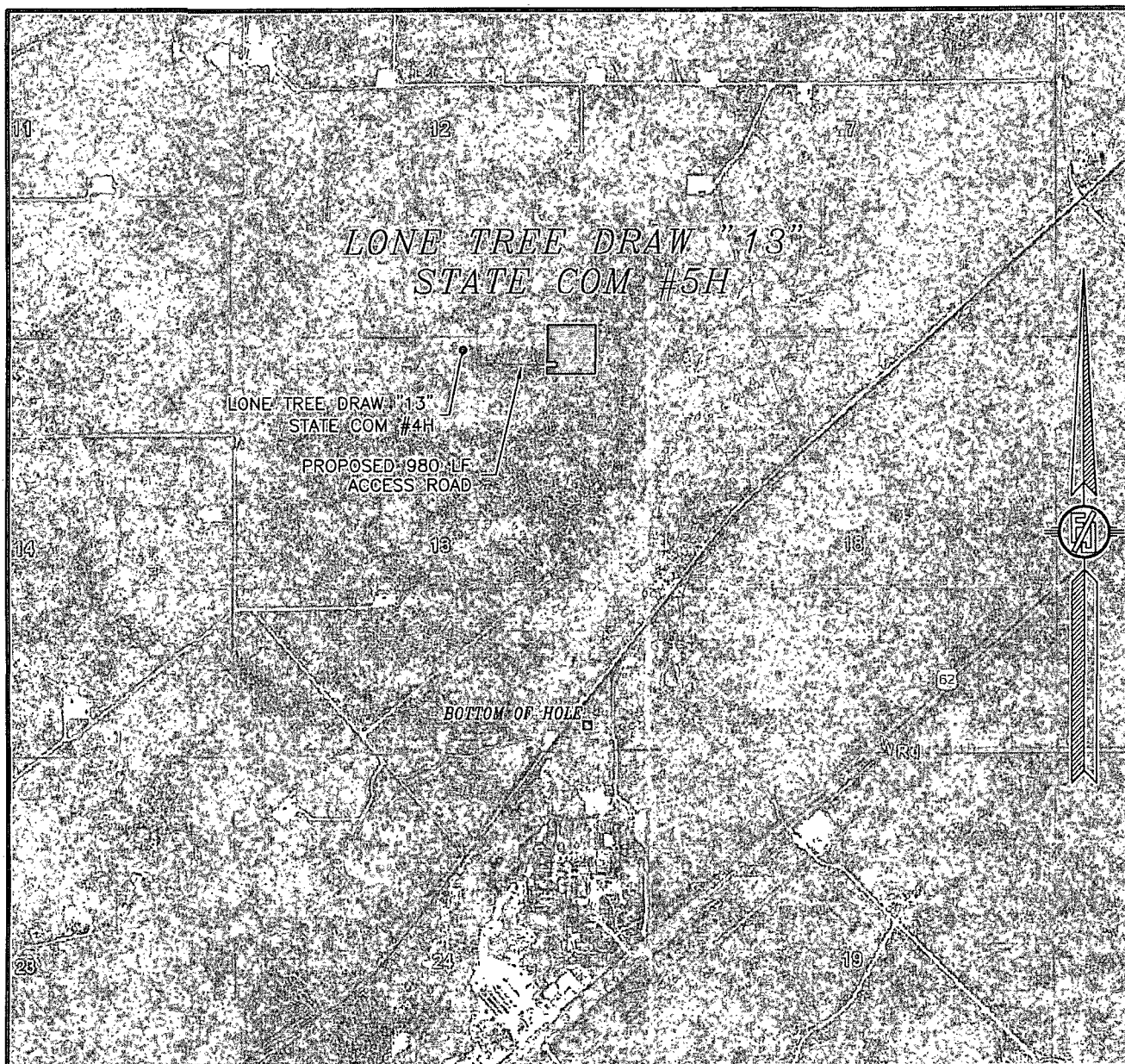
DEVON ENERGY PRODUCTION COMPANY, L.P.  
**LONE TREE DRAW "13" STATE COM #5H**  
 LOCATED 150 FT. FROM THE NORTH LINE  
 AND 990 FT. FROM THE EAST LINE OF  
 SECTION 13, TOWNSHIP 21 SOUTH,  
 RANGE 27 EAST, N.M.P.M.  
 EDDY COUNTY, STATE OF NEW MEXICO

JANUARY 31, 2013

SURVEY NO. 1554

MADRON SURVEYING, INC. 301 SOUTH CANAL (575) 234-3341 CARLSBAD, NEW MEXICO

SECTION 13, TOWNSHIP 21 SOUTH, RANGE 27 EAST, N.M.P.M.  
EDDY COUNTY, STATE OF NEW MEXICO  
**AERIAL PHOTO**



NOT TO SCALE  
AERIAL PHOTO:  
GOOGLE EARTH  
JUNE 2011

DEVON ENERGY PRODUCTION COMPANY, L.P.  
**LONE TREE DRAW "13" STATE COM #5H**  
LOCATED 150 FT. FROM THE NORTH LINE  
AND 990 FT. FROM THE EAST LINE OF  
SECTION 13, TOWNSHIP 21 SOUTH,  
RANGE 27 EAST, N.M.P.M.  
EDDY COUNTY, STATE OF NEW MEXICO

JANUARY 31, 2013

SURVEY NO. 1554

MADRON SURVEYING, INC. 301 SOUTH CANAL (575) 234-3341 CARLSBAD, NEW MEXICO