

REC'D  
NM 8310  
NM (575) 393-0720  
FEB 21 2015  
NM 83210  
NM (575) 748-9720  
NM 83210  
NM 83210

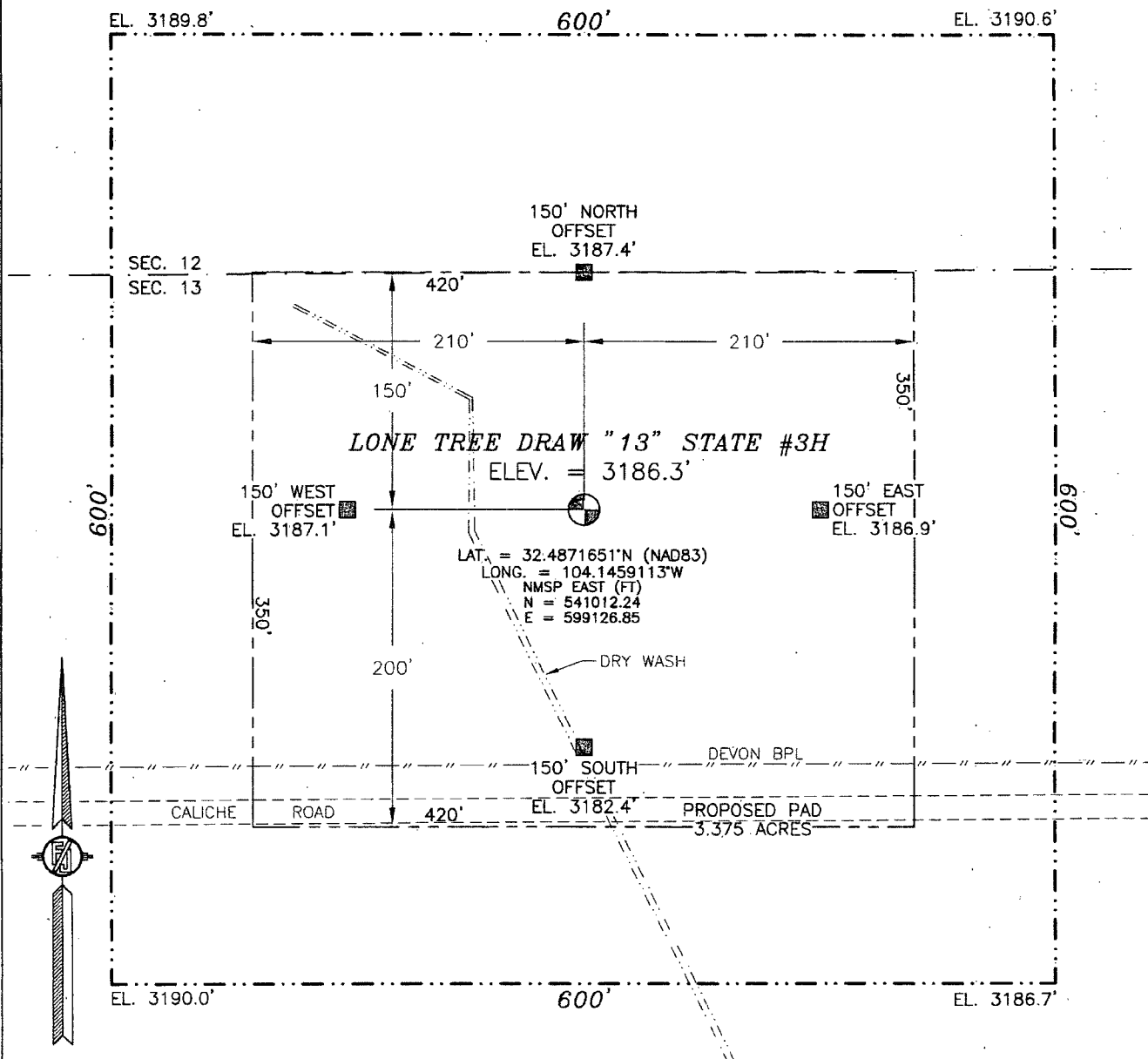
RECEIVED  
FEB 21 2013  
ces Department  
VISION  
MOOD ARTESIA  
\$46

☐ AMENDED REPORT

Geology, Minerals & Natural Resources Department  
OIL CONSERVATION DIVISION  
1220 South St. Francis Dr.  
Santa Fe, NM 87505

[illegible]

SECTION 13, TOWNSHIP 21 SOUTH, RANGE 27 EAST, N.M.P.M.  
EDDY COUNTY, STATE OF NEW MEXICO



010 50 100 200

SCALE 1" = 100'

**DIRECTIONS TO LOCATION**

FROM CR 600 (RAINS) AND CR 237 (ANGEL RANCH ROAD) AND CALICHE LEASE ROAD GO NORTHWEST ON CALICHE LEASE ROAD 0.1 MILE, TURN RIGHT AND GO SOUTHEAST 0.6 MILES, BEND LEFT AND GO EAST 1.0 MILES, TURN RIGHT AND GO SOUTH 0.6 MILES, TURN LEFT AND GO EAST 0.7 MILES, TURN LEFT AND GO NORTH 0.15 MILES, TURN RIGHT AND GO EAST 0.3 MILES AND LOCATION IS ON THE LEFT (NORTH) 190 FT.

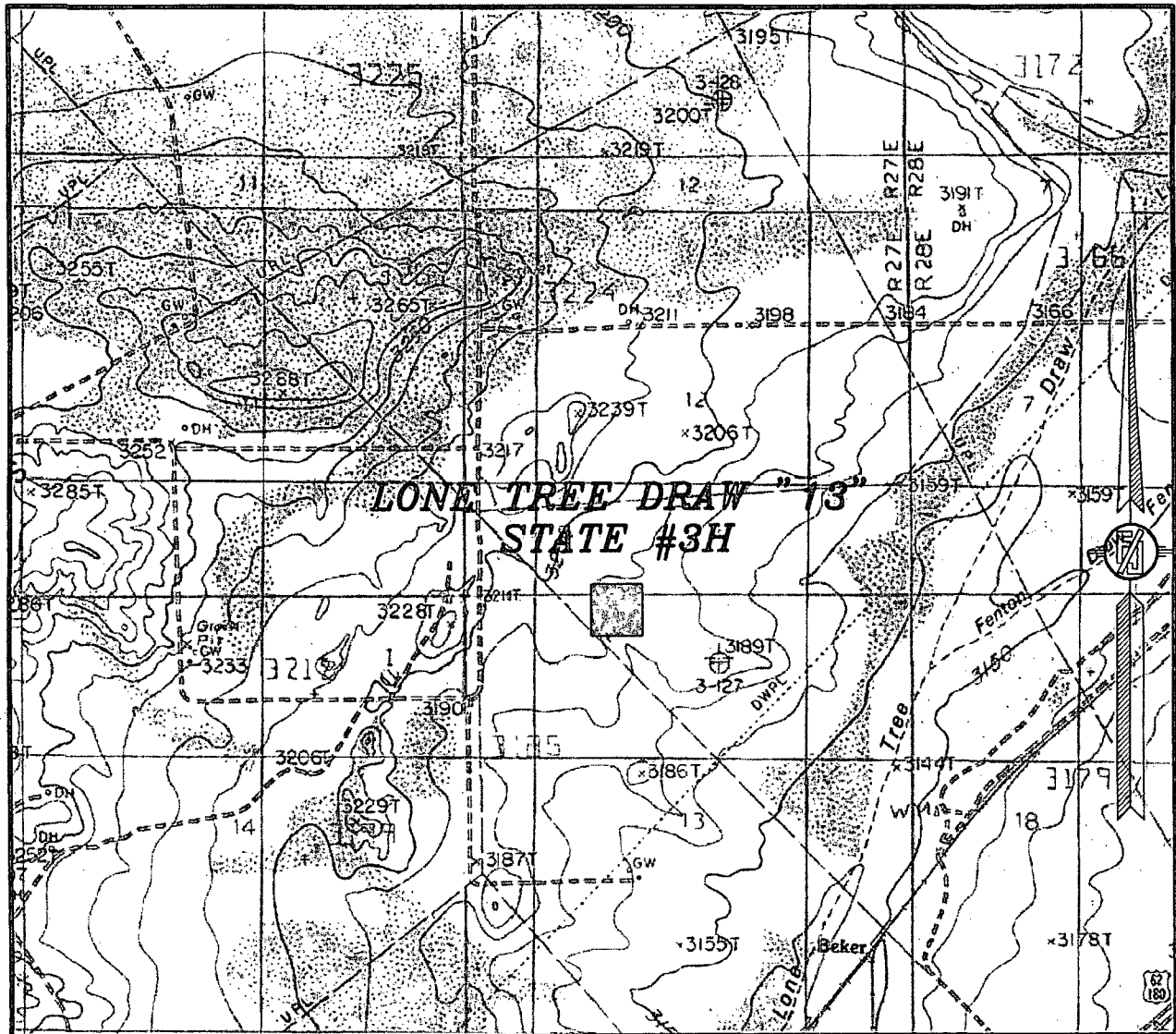
DEVON ENERGY PRODUCTION COMPANY, L.P.  
**LONE TREE DRAW "13" STATE #3H**  
LOCATED 150 FT. FROM THE NORTH LINE  
AND 1830 FT. FROM THE WEST LINE OF  
SECTION 13, TOWNSHIP 21 SOUTH,  
RANGE 27 EAST, N.M.P.M.  
EDDY COUNTY, STATE OF NEW MEXICO

JANUARY 31, 2013

SURVEY NO. 1553

MADRON SURVEYING, INC. 301 SOUTH CANAL CARLSBAD, NEW MEXICO  
(575) 234-3341

SECTION 13, TOWNSHIP 21 SOUTH, RANGE 27 EAST, N.M.P.M.  
 EDDY COUNTY, STATE OF NEW MEXICO  
 LOCATION VERIFICATION MAP



USGS QUAD MAP:  
 CARLSBAD EAST

NOT TO SCALE

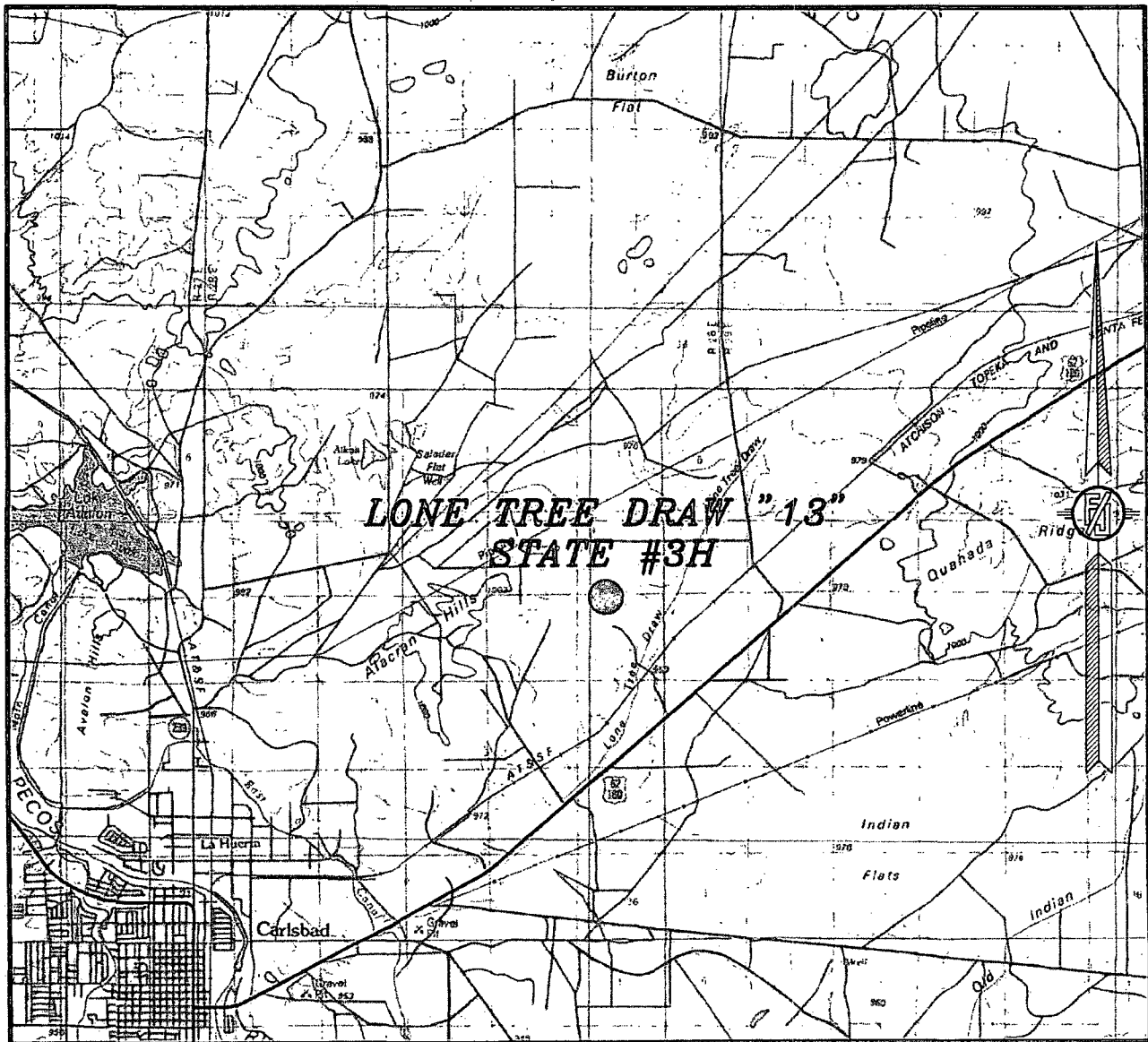
DEVON ENERGY PRODUCTION COMPANY, L.P.  
**LONE TREE DRAW "13" STATE #3H**  
 LOCATED 150 FT. FROM THE NORTH LINE  
 AND 1830 FT. FROM THE WEST LINE OF  
 SECTION 13, TOWNSHIP 21 SOUTH,  
 RANGE 27 EAST, N.M.P.M.  
 EDDY COUNTY, STATE OF NEW MEXICO

JANUARY 31, 2013

SURVEY NO. 1553

MADRON SURVEYING, INC. 301 SOUTH CANAL CARLSBAD, NEW MEXICO  
 (575) 234-3341

SECTION 13, TOWNSHIP 21 SOUTH, RANGE 27 EAST, N.M.P.M.  
EDDY COUNTY, STATE OF NEW MEXICO  
VICINITY MAP



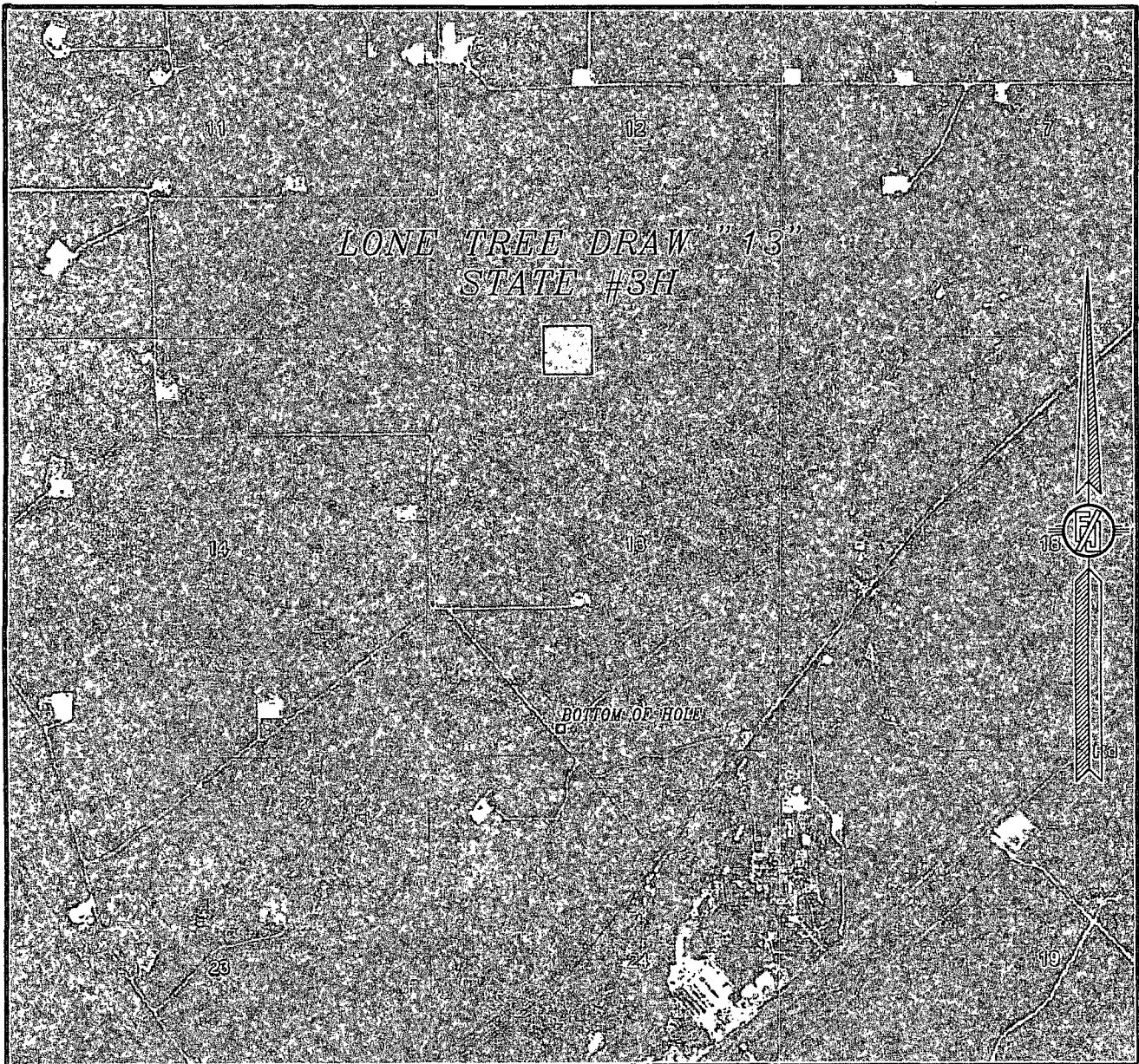
NOT TO SCALE

DEVON ENERGY PRODUCTION COMPANY, L.P.  
**LONE TREE DRAW "13" STATE #3H**  
LOCATED 150 FT. FROM THE NORTH LINE  
AND 1830 FT. FROM THE WEST LINE OF  
SECTION 13, TOWNSHIP 21 SOUTH,  
RANGE 27 EAST, N.M.P.M.  
EDDY COUNTY, STATE OF NEW MEXICO

JANUARY 31, 2013

MADRON SURVEYING, INC. 301 SOUTH CANAL (575) 234-3341 CARLSBAD, NEW MEXICO  
SURVEY NO. 1553

SECTION 13, TOWNSHIP 21 SOUTH, RANGE 27 EAST, N.M.P.M.  
EDDY COUNTY, STATE OF NEW MEXICO  
AERIAL PHOTO



NOT TO SCALE  
AERIAL PHOTO:  
GOOGLE EARTH  
JUNE 2011

DEVON ENERGY PRODUCTION COMPANY, L.P.  
**LONE TREE DRAW "13" STATE #3H**  
LOCATED 150 FT. FROM THE NORTH LINE  
AND 1830 FT. FROM THE WEST LINE OF  
SECTION 13, TOWNSHIP 21 SOUTH,  
RANGE 27 EAST, N.M.P.M.  
EDDY COUNTY, STATE OF NEW MEXICO

JANUARY 31, 2013

SURVEY NO. 1553

MADRON SURVEYING, INC. 301 SOUTH CANAL (575) 234-3341 CARLSBAD, NEW MEXICO